

Historic Building Record  
Old Stables  
Tullibole Castle  
Crook of Devon  
Kinross  
  
KR11

**Alder Archaeology Ltd**  
**55 SOUTH METHVEN STREET**  
**PERTH PH1 5NX**  
Tel: 01738 622393  
[Director@AlderArchaeology.co.uk](mailto:Director@AlderArchaeology.co.uk)

**HISTORIC BUILDING RECORD  
OLD STABLES, TULLIBOLE CASTLE,  
CROOK OF DEVON,  
KINROSS  
KR11**

1	<i>Background</i> .....	2
2	<i>Details of Work</i> .....	3
3	<i>Discussion</i> .....	6
Appendix 1	<i>Photographic Register</i> .....	7
Appendix 2	<i>Discovery &amp; Excavation in Scotland Entry</i> .....	10

*Illustration 1: Location*

*Illustration 2: Location*

*Illustration 3: Courtyard*

*Illustration 4: Details*

*Illustration 5: S and E elevations*

*Illustration 6: S gable wall*

*Illustration 7: Loft interior*

*Illustration 8: E elevation. Quoins show addition of S end*

*Illustration 9: Stable interior. Beam end in wall aligns with post sockets in floor*

*Illustration 10: Wash house door and chimney*

*Illustration 11: Cast iron wash tub re-used as planter*

*Illustration 12: N gable with vent slot and finial*

*Illustration 13: W elevation. Store room door. Repointing, and change of build above lintel*

*Illustration 14: W elevation, S end. Changes of build. Junction of courtyard wall*

*Illustration 15: SW corner, courtyard wall*

**Author** David Bowler BA, MPhil, FSA Scot, MCIfA

**Illustrator** David Bowler

**Editor** Chris Fyles, MA, FSA Scot, PCIfA.

## **ABSTRACT**

*Alder Archaeology produced a historic building record (site code KR11) of the stables, Tullibole Castle, Crook of Devon, Perth and Kinross, in advance of conversion to residential use. The recording was undertaken on 16<sup>th</sup> April 2021.*

*The old stables form the W range of an open Courtyard, about 50 m SW of Tullibole Castle, an A-listed tower house. The stable block is a long, narrow, single-storey building with a small loft over the tack room at the S end. It is built mainly of whinstone rubble, and roofed with Scotch slate in diminishing courses. As well as the tack room and stable, there is a store room and wash house. The S end of the building seems to be an addition, and it appears that the wall head has been raised at some time. The building probably dates mainly to the late 18<sup>th</sup> or early 19<sup>th</sup> century, but could incorporate earlier and later features.*

## **1 Background**

### **1.1 Introduction**

Mr F W Whalley on behalf of Mr and Mrs Harry Moncreiff instructed Alder Archaeology Ltd to undertake an archaeological Historic Building Record of the stables at Tullibole Castle, prior to their conversion to residential use. The stables form part of the curtilage of Tullibole Castle (LB11459), an A-listed tower house 2 km to the E of Crook of Devon, Kinross. The stables are located at NGR NO 0523 0050, a little to the W of the tower.

The work (site code KR11) was undertaken on 16<sup>th</sup> April 2021, on a bright and frosty morning. The requirement was to make a basic level record of the existing building, and to note evidence of its changing use and construction

The work was designed to satisfy the archaeological Condition 1 on Planning Permission reference 20/00929/FLL, and Condition 2 of the related Listed Building Consent 20/00928/LBC.

### **1.2 Aims and Objectives**

The main aim of this investigation was to record the form and structure of the building as it currently is, and especially any evidence of its changing form and use, before this evidence is obscured by conversion to residential use.

### **1.3 Reporting**

The present document has been prepared as the final report on this investigation. Copies will be sent to the client, The National Record of the Historic Environment at Historic Environment Scotland, and the Perth and Kinross Historic Environment Record.

## **1.4 Acknowledgements**

Guidance was provided by Sophie Nicol of Perth and Kinross Heritage Trust. Access and helpful information was provided Roderick Moncreiff.

## **2 Details of Work**

### **2.1 The Site (Illus 1)**

The old stables form the W range of an open courtyard, about 50 m SW of the Castle. The courtyard is entered from the SE corner. The N range is formed by Castle Cottage, used as a family residence, the E range by the old Coach House, now used as a function suite, and the S range by The Longhouse, now modernised and used as a holiday cottage. The ranges are separate from one another, though a high precinct wall forms the SW corner of the courtyard, and connects the stables to The Longhouse. The courtyard is actually oriented a few degrees W of North, but for convenience is described as being aligned N – S.

Directly to the W of the stables, separated by a narrow track, is a 20<sup>th</sup>-century pole barn, supported on earthfast wooden posts, with angled steel roof trusses, a profiled sheet metal roof, and mostly open sides and ends. This is currently in use as store for firewood and farm equipment, and is to be demolished. This was briefly photographed for completeness.

### **2.2 Method**

The site was visited on 16<sup>th</sup> April 2021. The stable range was photographed in its setting, and then in detail, starting with the S gable end, then the W (courtyard) elevation, entering each of the rooms in turn, then the N gable end, and finally the E (external) elevation, entering the rooms accessible from this side, and working back down to the SW corner. Finally, the pole barn was recorded, and some general shots taken of the exterior of the courtyard, and of the adjacent tower house.

The photographic record was intentionally structured to allow intuitive cross-reference between detail and its wider setting. It is described in detail in Appendix 1 below, together with interpretive notes where relevant. The text which follows gives a general overview. The illustrations are based on architect's plans and elevations, annotated to show features of interest.

### **2.3 Results of Investigations**

#### **2.3.1 *SW Corner of Courtyard***

The high wall which forms the SW corner of the courtyard appears to be built onto the S gable wall of the stable block. It is built mostly of whinstone rubble, with flat concrete slab coping. At its N end it turns E and runs partly over the skew of the S gable wall. At its S end it also turns E, and joins onto the original W gable end of The Long House. The coping here slopes down in a graceful curve. The E (internal) face of the wall is mostly covered with plaster, perhaps reflecting the position of a lean-to building, since removed. The E and S (external) faces of the wall are of whinstone rubble with sandstone quoins.

### *2.3.2 S Gable Wall*

The S gable wall of the stable block is mostly of whin and sandstone rubble, with sandstone quoins and coping on the skewes, and sandstone skewputs. There is a central chimney stack built of ashlar blocks, surmounted by a flat sandstone coping with bevelled edges. There is no visible chimney can. The coping has been partly removed on the W side, where the gable has been partly built over by the Courtyard Wall (see above). The gable stands to ground floor and loft height, with a visible change of build about 1.2 m off the ground. Above this level the exterior of the chimney is largely formed by ashlar blocks, probably re-used.

### *2.3.3 Tack Room*

The S end of the stable block consists of a tack room, entered by a doorway in the E wall, and a loft above. The tack room has a cement floor, is lined with vertical tongue and groove boards, and has traces of a stove pipe connecting to the chimney in the S gable wall. The floor joists above are exposed, and also form the bases of the roof trusses. The entrance has a two-leaf double folding door of vertical tongue and groove boards. The tack room is currently used as a general store for materials and equipment.

Against the N partition wall is a steep and very simple open timber stair leading to the loft above. At the foot of the stair, close to the E wall, is a doorway leading to the adjacent stable.

### *2.3.4 Loft*

The loft over the tack room is a very simple space, with lath and plaster on the walls and ceiling, and a simple stone fireplace in the S gable wall. There is a small roof light in the middle of the W facing slope. The plaster has been distempered, and the loft was obviously intended to be habitable, probably by a stable hand, but there is no obvious way of closing off the loft from the tack room below. The loft is now derelict and empty, except for fallen plaster and a few odd items.

Externally, the loft and the rest of the stable block is roofed in traditional blue Scotch slate laid in diminishing courses, with zinc ridges. The gutters are now missing, but the mild steel or wrought iron brackets which supported them are still visible, as are occasional cast-iron down-pipes.

### *2.3.5 Stable*

The central and largest part of the building is the stable proper. This is also of whin and sandstone rubble with sandstone quoins. Where the tack room abuts the S end of the stable, it appears from the detail of the quoins that the stable came first, with the tack room built onto it. It also appears from the quoins that the wall head was raised, perhaps to allow the extra height required to build a loft over the tack room.

The stable has a very wide entrance, as might be expected. There is considerable difference in the quoins forming the N and S jambs of the entrance, and some irregularity at the top of the S jamb, suggesting repair or alteration. Externally, there is no visible lintel across the entrance, and the roof appears to sag. Internally it is obvious that rolled steel lintels have been inserted to support the feet of the rafters, probably after widening the stable entrance. The entrance is closed to waist height with doors of timber and hardboard, hinged on the jams, and painted bright orange. Above these the entrance is open except for a black plastic tarpaulin draped from the lintels above.

Internally, the walls are plastered, and the sawn softwood rafters are tied by collars about half way up their length. There are no timber ties across the rafters at wall head, nor is there a wall plate along the wall head. Instead, the feet of the rafters are deeply embedded in the wall head. Above the rafters are sawn sarking boards.

In the centre of the N and S end walls of the stable are the cut-off stubs of a large rectangular beam which would have run the length of the stable just above head height, and would have supported the partitions dividing the stalls. The floor is of concrete, with diagonal grooves and gullies for grip and drainage. At intervals there are sockets for timber posts which would have supported the partitions between the stalls, directly under the line of the central timber beam. The stall partitions themselves are no longer extant.

In the N and S end walls, towards the E side wall, are doorways leading to the adjacent rooms, the tack room in the S and a store room to the N. These are closed with wooden doors of vertical tongue and groove boards.

N of the main entrance there is a small window in the E wall, formed by sandstone sills and quoins, and currently glazed with corrugated plastic.

The stable is currently used to store a wide variety of materials including stage scenery.

#### *2.3.6 Wash House*

Directly N of the stable is a store room entered from the W side of the building, and described below. N of this is a wash house which completes the N end of the building. The wash house is entered by a doorway in the E wall, towards the NE corner of the building, formed by a sandstone lintel and jambs with tooled margins. The door is as usual made of vertical tongue and groove boards.

At the NE corner of the building is a small red brick chimney, rising up through the slated roof with zinc flashing, and surmounted by a thin concrete slab cope and small buff-yellow earthenware chimney can. The chimney is built up against but not into the gable wall and E side wall. The chimney is clearly an addition, perhaps early 20th-century, to the original structure. Internally, the wash house is a very plain, almost featureless room, with exposed rubble walls, lime washed, not plastered. The roof trusses again consist of sawn rafters with high collars, covered with sarking boards, but in this room the rafter feet rest on a wall plate, rather than being embedded in the wall head.

In the NE corner, the brick chimney is clearly visible, all the way to the floor, partly lime washed. The wash boiler itself is gone, but there are cut-off copper water pipes beside the chimney, and a hole in the side of the chimney, perhaps where a stove pipe has been removed. Directly outside in the courtyard, there is a large, bell-shaped cast-iron tub, now re-used as a planter, almost certainly the original boiling tub.

In the centre of the N gable wall, above head height, a large squared block forms one side of what was originally an internally splayed ventilation slot, more clearly visible externally (see below). The wash house is now practically empty.

### *2.3.7 N Gable Wall*

The N gable is a rather plain, symmetrical wall of lime-washed rubble. At the apex is a simple, flat sandstone finial with bevelled edges. The skews are covered with flat sandstone hopes, secured with a single crowstep on either side, half way down, and with plain but very solid and substantial skewputs. Below these are substantial ashlar quoins.

In the centre of the gable wall, above head height, is vertical ventilation slot, also seen internally, now blocked up, formed by large and solid but slightly irregular stone blocks.

The ground falls away a little to the N of the gable wall, partly exposing the foundation of large, slightly irregular boulders.

### *2.3.8 W Side Wall*

The W side wall is mostly of whinstone rubble, and largely featureless. In several places there appears to be a possible change of build above head height, and an extensive area of repairs or repointing near the middle of the wall.

### *2.3.9 Store Room*

In between the stable and the wash house is a store room, entered by the only doorway in the W side wall. This is formed by a sandstone lintel and jambs with tooled margins, somewhat similar to the wash house doorway (see above). The wall in this area seems to undergo a change of build above lintel height, and there is extensive re-pointing to the S of this doorway.

Internally this room is again similar to the adjacent wash house, with lime washed rubble walls, and the rafters supported on a wall plate. There is a curious small rectangular niche in the centre of the E wall, about the size of a brick, with traces of decayed timber. Internally the doorway is spanned by a very thin plank timber lintel. The wall over and directly to the N of this doorway consists of very small and angular rubble. There is a small roof light directly over this doorway.

In the SE corner of this room there is a doorway in the S wall, leading to the adjacent stable, and closed by a simple wooden plank door. This store room is now used to contain assorted furniture and equipment.

## **3 Discussion**

The stable block at Tullibole Castle is a very simple and functional farm building, probably of late 18<sup>th</sup> or early 19<sup>th</sup>-century date, at least in its present form. Despite its simple form and modest size, it shows signs of various changes, for example adding on the tack room and loft, raising the wall head in at least some places, inserting the wash house chimney, varying the seating of the rafters with or without wall plates, adopting slightly different forms of masonry and enlarging the stable entrance.

It is a reminder that even quite small and simple farm buildings may have a long and subtle history, and perhaps be older than they immediately look.

## Appendix 1 Photographic Register

<i>No</i>	<i>Description</i>	<i>View</i>
122	E elevation and S gable end.	WNW
123	S gable end and adjacent courtyard wall.	NW
124	Courtyard wall. Cement render on rubble wall. Concrete copes.	W
125	Courtyard wall and adjacent S wall with ogee coping.	WSW
126	Courtyard wall and adjacent S wall with ogee coping. Cottage forming S range of courtyard.	SW
127-30	S gable end. Random rubble, with ashlar quoins. faced blocks (re-used?) forming back of chimney. Junction with return of courtyard wall. Possible skew line? Iron pin set in lead in large block. Hook? Tethering ring?	N
13-5	S end of stable block. Random rubble. Lime mortar. Sandstone quoins. Tack room with loft above, square chimney. Cement floor. Slates in diminishing courses. Zinc ridge. No gutter. Quoins in wall suggest tack room added on to S end of existing stable block.	W
136-7	Tack room interior. Lined with vertical boards. Stove pipe junction in S gable end. Exposed joists above.	SW
138	Two-leaf folding entrance door.	S
139	Interior and SW corner.	WSW
140	Interior and NW corner.	WNW
141	Timber stair to loft, against N partition wall.	W
142-3	Loft, with fireplace in S gable end. Lath and plaster lining.	S
144-5	Loft, with W-facing roof light.	SSW
146	Detail of fireplace.	S
147	Stable and tack room. Rubble wall, whinstone with sandstone quoins. Quoins at junction of stable and tack room suggests tack room added on, except at wall head, perhaps suggesting wall head raised. Broken cast-iron down pipe and brackets suggest gutter fitted across stable door, now missing. Faced sandstone either side of stable door.	W
148	Detail of wall between tack room and stable door.	W
149	Detail of stable doorway.	W
150	Stable interior. W wall, plastered rubble, with rafters, collars and sarking above	W
151	Detail, rubble and plaster.	W



152	Stable interior. Roof trusses above. Door to tack room in S wall. Large sawn timber in centre of S wall, now cut off. Originally a long N – S timber supporting stall partitions.	S
153	Stable interior. Concrete floor with grooves for drainage and grip, and socket for post supporting stall partitions. Aligns with N – S timber in S end wall.	S
154	Detail of N – S beam set in S wall. Rings show large trunk, quartered.	S
155	Stable interior. Roof trusses above. Beam socket in N wall. Post socket in concrete floor. Door in N wall to Store room. More improvised post and barrier adjacent. Later masonry on N side of main doorway, where modern lintel inserted.	N
156	Detail, beam socket in N wall, filled with mortared stone.	N
157	E wall of stable, N of main door. Window with sandstone ashlar casing.	W
158	Window in stable wall. Blank wall to NE door. Wash-house chimney at NE corner.	NW
159	Detail, tile pinning in wall just N of window.	W
160	E wall. Change of build and quoins at junction of stable and Store. Wash house chimney on L.	NNW
161-2	Wash house door and brick chimney. Sandstone casings around door. Sandstone skewes on N gable end. Quoins at NE corner.	W
163	Detail, wash house doorway. Vertical plank door.	SW
164	Wash house interior. W wall, random rubble. Rafters, collars and sarking boards. Rafter feet rest on wall plate.	W
165	Wash house interior. W wall plastered. Rafters, collars and sarking. Brick chimney in NE corner. Aperture for stove / boiler flue.	E
166	N gable wall. Random rubble. Squared block near centre is part of inward splayed ventilation slot. Partly plastered.	N
167	Brick chimney in NE corner. Aperture for flue pipe. Copper water pipes behind fire guard.	NE
168	Cast iron wash tub / boiler, removed, re-used as planter.	ENE
169-70	North gable end. Square finial and stepped skewes. Squared blocks in centre at loft level. Define ventilation slot, blocked.	S
171-2	NW Corner. Well finished quoins. N gable end.	SE
173	W wall, random rubble. Door to Store Room.	SSE
174	W wall. Door of Store Room with faced sandstone jambs and lintels. Apparent change of build above lintel height. Repairs and re-pointing S of doorway. Slates in diminishing courses. Two cast-iron roof lights.	E
175	Store Room interior. E wall plastered. Rafters, collars and sarking above. Wall plate.	E
176	Detail, rectangular aperture in centre of E wall. Brick size. Contains decayed timber. Function unknown.	E

177	Interior, E wall and doorway. Small angular rubble, exposed. Thin timber lintel over doorway.	WNW
178	NW corner. Possible change of build or finish in W wall and N wall at door lintel height.	NW
179	Detail, NW corner. Change of build. Possible alcove or doorway to wash house.	N
180	SE corner. Doorway to Stable. Concrete lintel above.	SE
181	S wall. Doorway to Stable. Rafters, collars and sarking.	S
182	W wall S of Store Room door. Repairs and repointing. Leaves dark area S of doorway. Possible change of build above door lintel.	SSW
183-4	W wall S of Store Room door. Repairs and repointing. Leaves dark area S of doorway. Possible change of build above door lintel level.	NNE
185	W wall. Marked change of build above door lintel level, suggests wall raised. Mark change of build and quoins at junction with Tack Room, suggests Tack Room added on to Stable. Quoins reverse at door lintel height.	SSE
186	Detail, junction of Stable and Tack Room with quoins and change at head height.	E
187	W elevation N of Tack Room.	NE
188-9	W elevation of Tack Room. Change of build at head height. Junction with Courtyard Wall at S end.	NE
190-1	W face of Courtyard Wall. Rubble.	E
192	SW corner of Courtyard Wall. Sandstone quoins.	NE
193	SW corner of Courtyard Wall. Sandstone quoins.	NNE
194	Pole Barn W of Stable Block.	N
195	Pole Barn W of Stable Block.	NE
196	Pole Barn W of Stable Block, N end.	ESE
197	Pole Barn W of Stable Block, N end.	SE
198	Detail, passage between Stable Block and Pole Barn.	S
199	Detail N gable end of Stable Block. Large irregular boulders form foundation course. Enlarged lower quoin at NE corner. Foundation course not lime washed.	SSW
200	N end of Stable Block, partly obscured by container.	WNW
201	S end of Stable and Tack Room.	W
202	Stable Block and Cottage.	NW
203	Entrance to Stable Courtyard.	NW

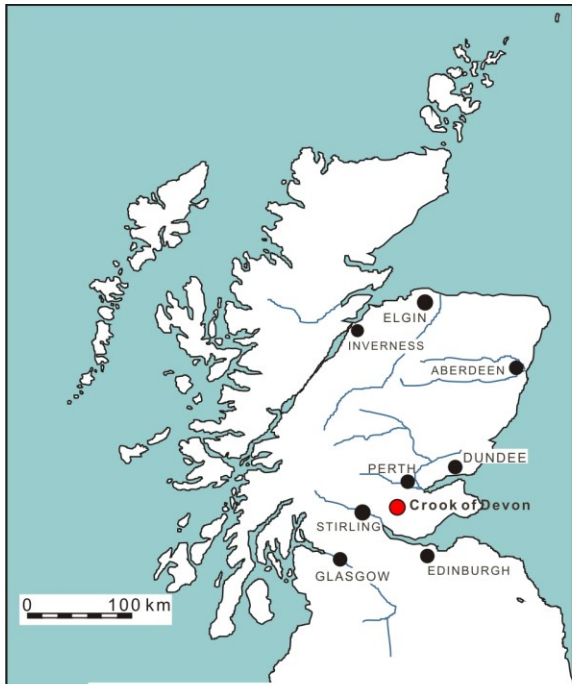
204	View from Courtyard entrance to Castle.	NNE
205	View from Courtyard entrance to Stable and Tack Room.	W
206	Detail of skewput on S gable end.	W
207-8	General view of Castle	NNW

## Appendix 2 Discovery & Excavation in Scotland Entry

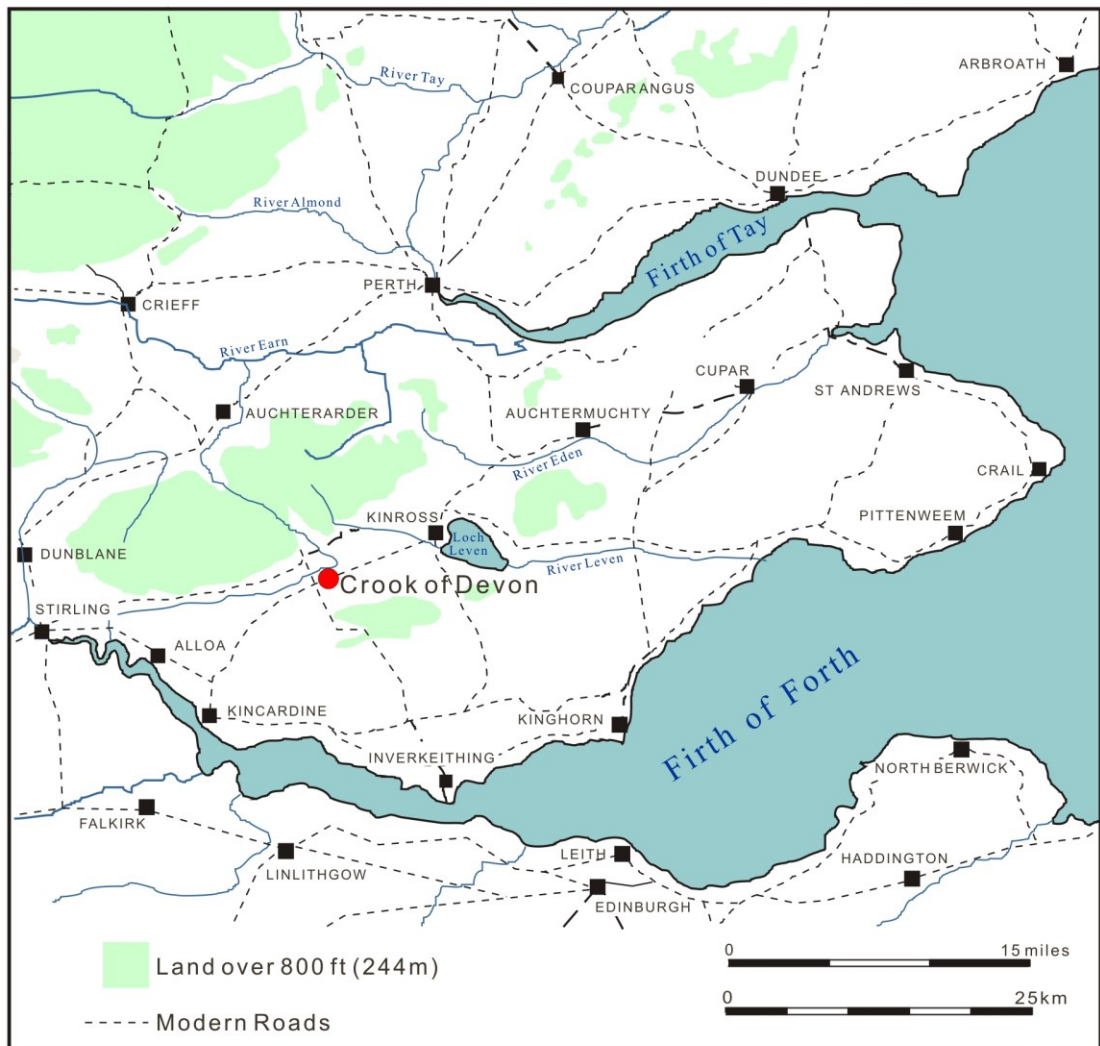
<b>LOCAL AUTHORITY:</b>	Perth & Kinross
<b>PROJECT TITLE/SITE NAME:</b>	Old Stables, Tullibole Castle
<b>PROJECT CODE:</b>	KR11
<b>PARISH:</b>	Fossoway
<b>NAME OF CONTRIBUTOR:</b>	David Bowler
<b>NAME OF ORGANISATION:</b>	Alder Archaeology Ltd
<b>TYPE(S) OF PROJECT:</b>	Historic Building Recording
<b>NMRS NO(S):</b>	NO00SE10
<b>SITE/MONUMENT TYPE(S):</b>	Stables
<b>SIGNIFICANT FINDS:</b>	-
<b>NGR (2 letters, 8 or 10 figures)</b>	NO 0523 0050
<b>START DATE (this season)</b>	16 <sup>th</sup> April 2021
<b>END DATE (this season)</b>	16 <sup>h</sup> April 2021
<b>PREVIOUS WORK (incl. DES ref.)</b>	-
<b>MAIN (NARRATIVE) DESCRIPTION:</b> (May include information from other fields)	<p>Alder Archaeology produced a historic building record (site code KR11) of the stables, Tullibole Castle, Crook of Devon, Perth and Kinross, in advance of conversion to residential use. The recording was undertaken on 16<sup>th</sup> April 2021.</p> <p>The old stables form the W range of an open Courtyard, about 50 m SW of Tullibole Castle, an A-listed tower house. The stable block is a long, narrow, single-storey building with a small loft over the tack room at the S end. It is built mainly of whinstone rubble, and roofed with Scotch slate in diminishing courses. As well as the tack room and stable, there is a store room and wash house. The S end of the building seems to be an addition, and it appears that the wall head has been raised at some time. The building probably dates mainly to the late 18<sup>th</sup> or early 19<sup>th</sup> century, but could incorporate earlier and later features.</p>
<b>PROPOSED FUTURE WORK:</b>	none

<b>CAPTION(S) FOR ILLUSTRS:</b>	-
<b>SPONSOR OR FUNDING BODY:</b>	Owner
<b>ADDRESS OF MAIN CONTRIBUTOR:</b>	Alder Archaeology Ltd, 55 South Methven Street, Perth PH1 5NX
<b>EMAIL ADDRESS:</b>	<a href="mailto:director@alderarchaeology.co.uk">director@alderarchaeology.co.uk</a>
<b>ARCHIVE LOCATION</b> (intended/deposited)	HES (intended)

Illus 1



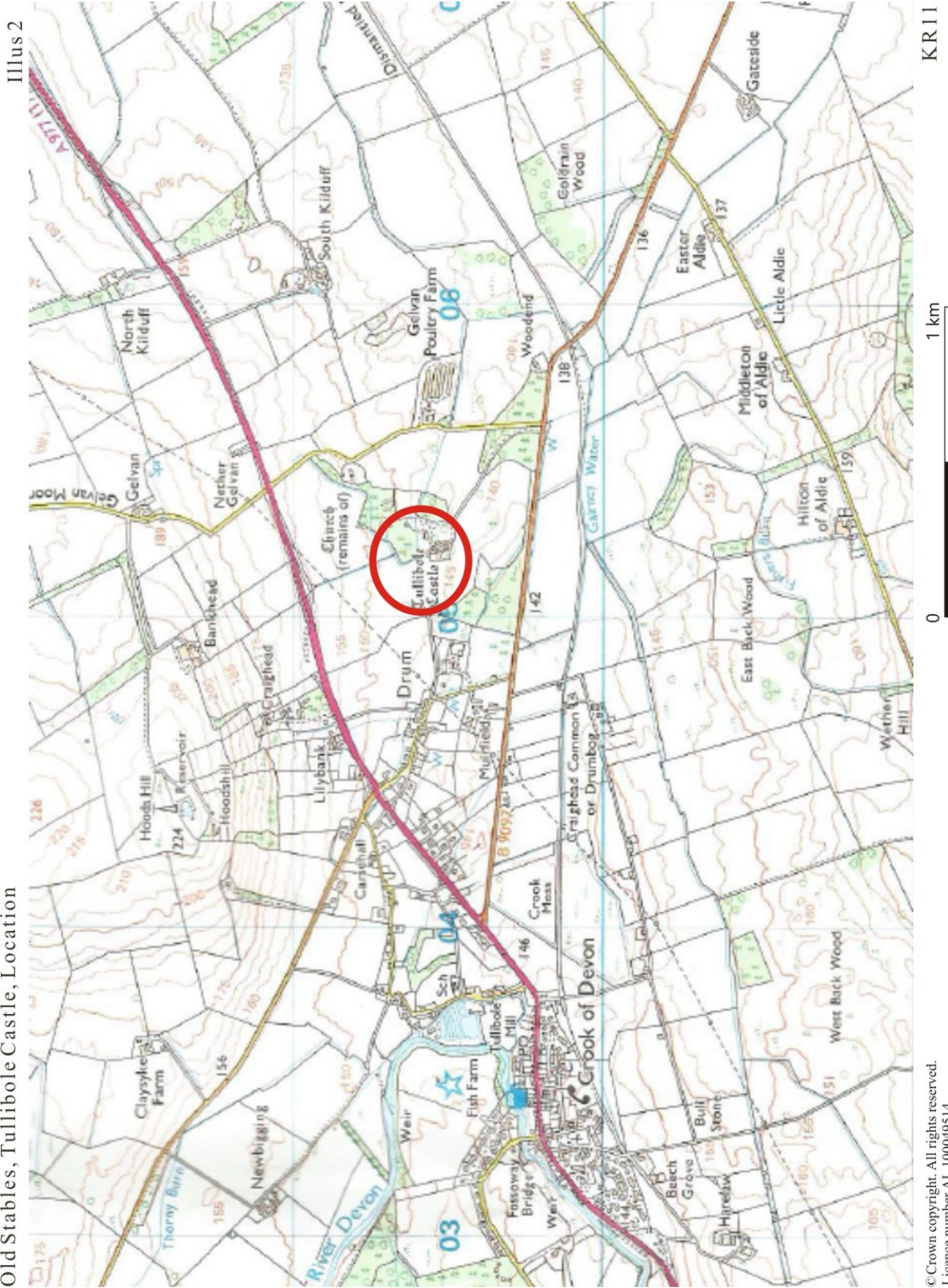
# Old Stables, Tullibole Castle Location



© Crown copyright. All rights reserved.  
Licence number AL 100049514

KR11

Old Stables, Tullibole Castle, Location



Illus 2

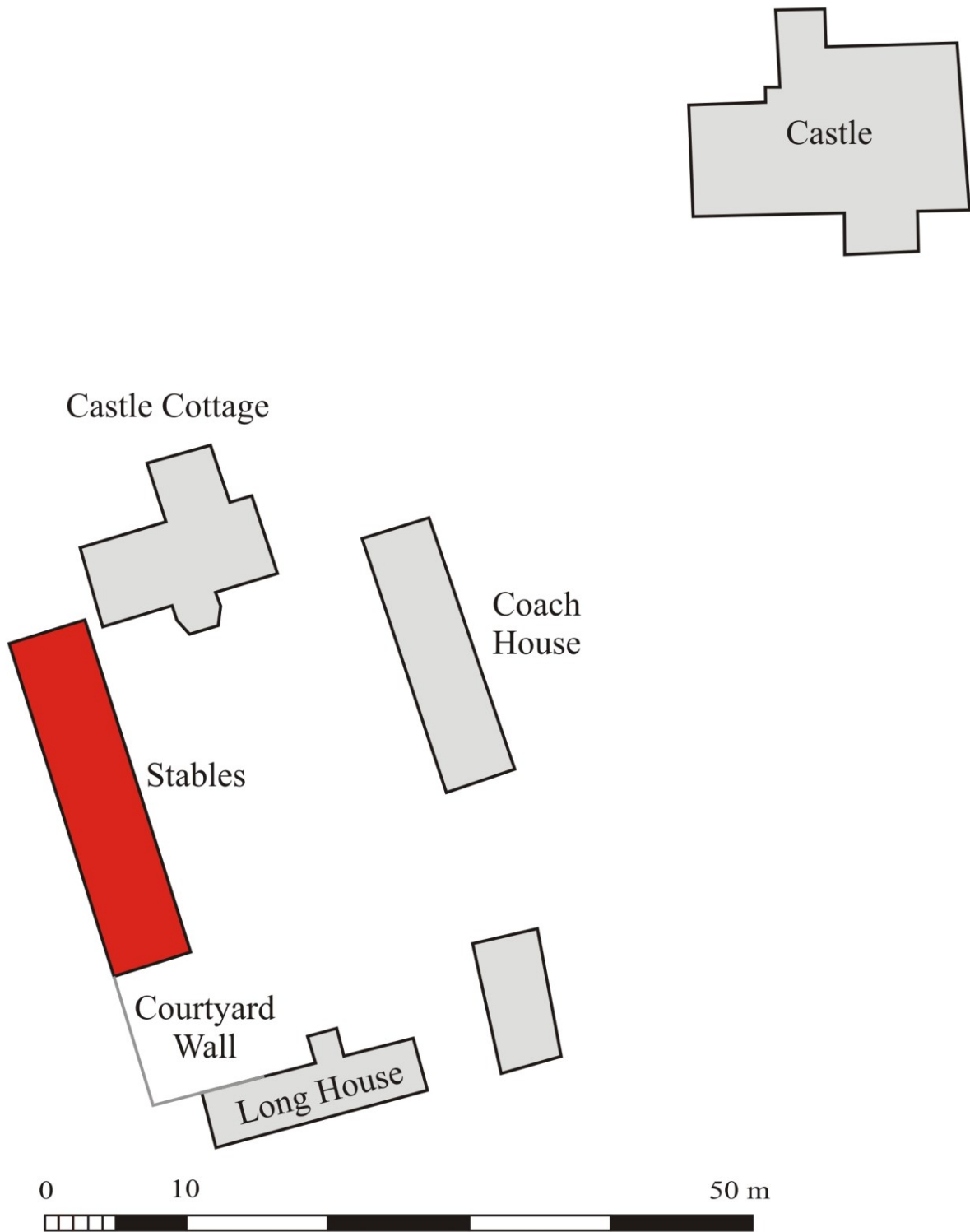
KR11

0 1 km

© Crown copyright. All rights reserved.  
Licence number AL 100049514

Old Stables, Tullibole Castle, Courtyard

Illus 3



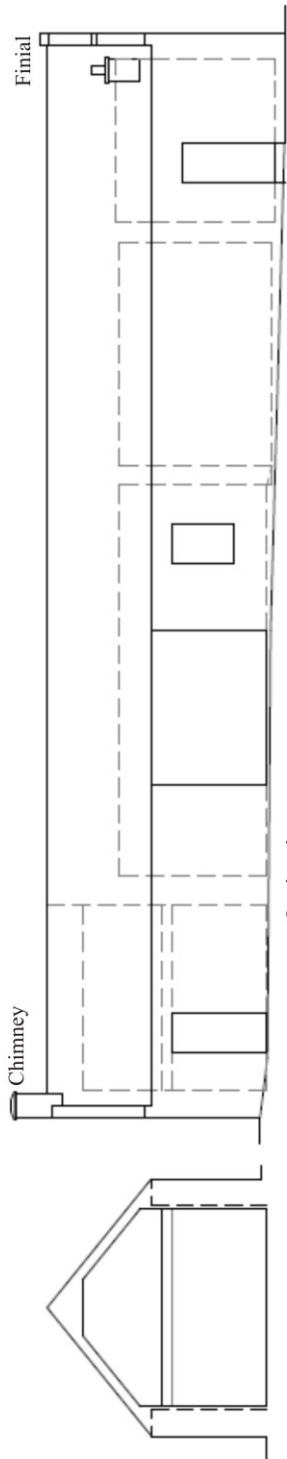
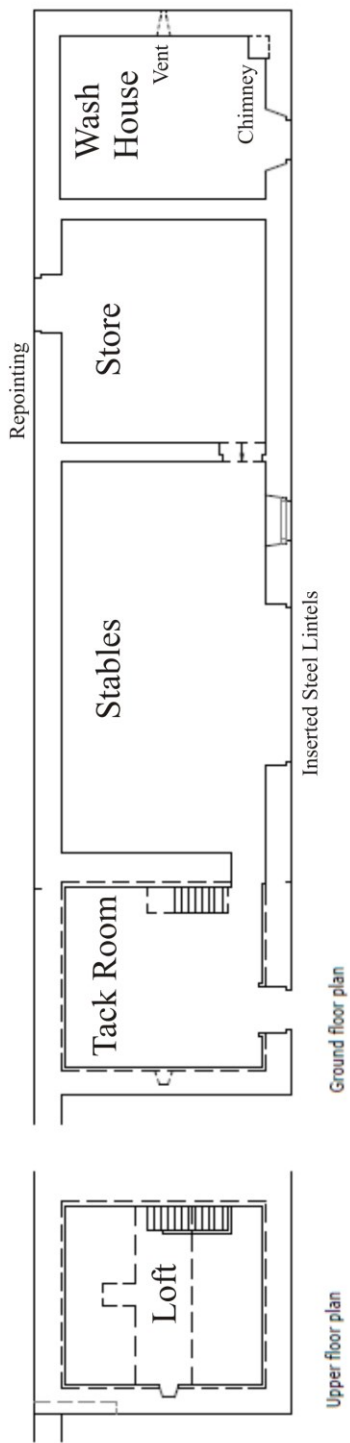
Base Plan by F W architecture

KR11

Illus 4

Old Stables, Tullibole Castle, details

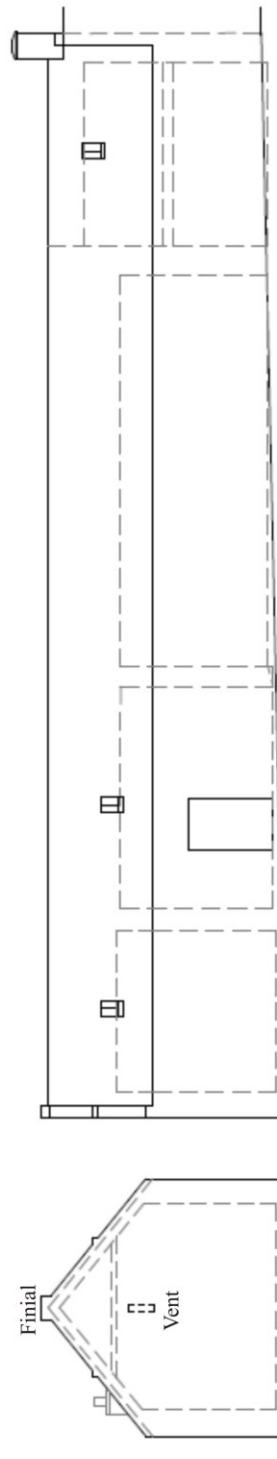
TULLIBOLE STABLES  
 survey 1.100 @ A3  
 FW Architecture august 2018



Section

Quoins show  
 Tack Room  
 added.

East elevation



North elevation

West elevation



South elevation





Illus 5 S and E elevations.



Illus 8 E elevation. Quoins show addition of S end.



Illus 6 S gable wall.



Illus 9 Stable interior. Beam end in wall aligns with post sockets in floor.



Illus 7 Loft interior.



Illus 10 Wash house door and chimney.



Illus 13 W Elevation. Store room door. Repointing, and change of build above lintel.



Illus 11 Cast iron wash tub re-used as planter.



Illus 14 W elevation, S end. Changes of build. Junction of courtyard wall.



Illus 12 N gable with vent slot and finial.



Illus 15 SW corner, courtyard wall.