

**Battery Storage Site
Stonehill
Wiltshire**

MAGNETOMETER SURVEY REPORT

for

Penso Power Ltd

Kerry Donaldson & David Sabin

August 2022

Ref. no. J926

ARCHAEOLOGICAL SURVEYS LTD

**Battery Storage Site
Stonehill
Wiltshire**

MAGNETOMETER SURVEY REPORT

for

Penso Power Ltd

Fieldwork by David Sabin BSc (Hons) MCIfA
Report by Kerry Donaldson BSc (Hons) MCIfA
Report checked by David Sabin

Primary archive location - Archaeological Surveys Ltd, Yatesbury, Wiltshire

Survey date – 22nd July 2022
Ordnance Survey Grid Reference – **ST 99670 89725**



Archaeological Surveys Ltd
1 West Nolands, Nolands Road, Yatesbury, Calne, Wiltshire, SN11 8YD
Tel: 01249 814231 Fax: 0871 661 8804
Email: info@archaeological-surveys.co.uk
Web: www.archaeological-surveys.co.uk

CONTENTS

SUMMARY.....	1
1 INTRODUCTION.....	1
1.1 Survey background.....	1
1.2 Survey objectives and techniques.....	1
1.3 Standards, guidance and recommendations for the use of this report.....	1
1.4 Site location, description and survey conditions.....	2
1.5 Site history and archaeological potential.....	3
1.6 Geology and soils.....	3
2 METHODOLOGY.....	4
2.1 Technical synopsis.....	4
2.2 Equipment configuration, data collection and survey detail.....	4
2.3 Data processing and presentation.....	5
3 RESULTS.....	7
3.1 General assessment of survey results.....	7
3.2 Statement of data quality and factors influencing the interpretation of anomalies....	7
3.3 Data interpretation.....	7
3.4 List of anomalies.....	8
4 CONCLUSION.....	9
5 REFERENCES.....	9
Appendix A – basic principles of magnetic survey.....	10
Appendix B – data processing notes.....	10
Appendix C – survey and data information.....	11
Appendix D – digital archive.....	11

Appendix E – CAD layers for abstraction and interpretation plots.....11

Appendix F – copyright and intellectual property.....12

LIST OF FIGURES

Fig 01 Map of survey area (1:25 000)

Fig 02 Referencing information (1:1500)

Fig 03 Greyscale plot of minimally processed magnetometer data (1:1000)

Fig 04 Greyscale plot of filtered magnetometer data (1:1000)

Fig 05 Abstraction and interpretation of magnetic anomalies (1:1000)

LIST OF PLATES

Plate 1: Survey area looking south.....3

LIST OF TABLES

Table 1: List and description of interpretation categories.....8

Table 2: Archive metadata.....11

Table 3: CAD layering.....12

SUMMARY

A geophysical survey was carried out by Archaeological Surveys Ltd ahead of a proposed battery storage site near Minety substation in Wiltshire. The results of the detailed magnetometry indicated the presence of a number of discrete, pit-like anomalies, but it is not clear if they are of anthropogenic or natural origin. Variable magnetic responses and general magnetic enhancement of uncertain origin were located; these may be related to widespread burnt material within the soil, perhaps of industrial origin or related to removal of trees by burning. Very high level magnetic disturbance from overhead power cables prevent survey across part of the site.

1 INTRODUCTION

1.1 *Survey background*

- 1.1.1 Archaeological Surveys Ltd was commissioned by Landgage Heritage, on behalf of Penso Power Ltd, to undertake a magnetometer survey of an area of land to the south west of Minety substation near Stonehill, Charlton, Wiltshire. The site has been outlined for a proposed development of a battery storage facility and the survey forms part of an archaeological assessment.
- 1.1.2 The geophysical survey was carried out in accordance with a Written Scheme of Investigation (WSI) produced by Archaeological Surveys (2022) and issued to the client prior to commencing the fieldwork.

1.2 *Survey objectives and techniques*

- 1.2.1 The objective of the survey was to use magnetometry to locate geophysical anomalies that may be archaeological in origin so that they may be assessed prior to development of the site. The methodology is considered an efficient and effective approach to archaeological prospection.
- 1.2.2 Geophysical survey can provide useful information on the archaeological potential of a site; however, the outcome of any survey relies on a number of factors and as a consequence results can vary. The success in meeting the aims and objectives of a survey is, therefore, often impossible to predetermine.

1.3 *Standards, guidance and recommendations for the use of this report*

- 1.3.1 Archaeological Surveys Ltd is a Registered Organisation with the Chartered Institute for Archaeologists and both company directors are Members of the Chartered Institute for Archaeologists (MCIfA) and have therefore been

assessed for their technical competence and ethical suitability and abide by the ClfA Codes of Conduct. The survey and report follow the recommendations set out by: European Archaeological Council (2015) *Guidelines for the Use of Geophysics in Archaeology*; Institute for Archaeologists (2002) *The use of Geophysical Techniques in Archaeological Evaluations*. The work has been carried out to the Chartered Institute for Archaeologists (2014) (updated 2020) *Standard and Guidance for Archaeological Geophysical Survey*.

- 1.3.2 Archaeological Surveys Ltd provide a detailed geophysical survey report and it is recommended that where possible the contents should be considered in full. The Summary provides a brief overview of the results with more detail available in the Discussion and/or Conclusion. The *List of anomalies* within the Results provides a detailed assessment of the anomalies within separate categories which can be useful in inferring a level of confidence to the interpretation. Quality and factors influencing the interpretation of anomalies is also set out within the results.
- 1.3.3 It is recommended that the full report should always be considered when using data and interpretation plots; where this is not possible, in the field for example, the abstraction and interpretation plots should retain their colour coding and be used with a corresponding legend.
- 1.3.4 Where targeting of anomalies by excavation is to be carried out, care should be taken to place trenches over solid lines or features visible on the abstraction and interpretation plots. Archaeological Surveys abstraction and interpretation avoids the use of dashed or dotted line formats, and broken or fragmented lines used in interpretive plots may well correspond closely with truncation of archaeological features.

1.4 Site location, description and survey conditions

- 1.4.1 The site is located on land to the south west of Minety substation to the north of Stonehill, Charlton, Wiltshire. It is centred on Ordnance Survey National Grid Reference (OS NGR) ST 99670 89725, see Figs 01 and 02.
- 1.4.2 The geophysical survey covers approximately 1ha within an area of grassland, the south eastern corner contained a transmission tower and overhead cables that caused magnetic interference and were avoided.
- 1.4.3 The ground conditions across the site were generally considered to be favourable for the collection of magnetometry data and ground cover consisted of mown grass. Weather conditions during the survey were fine.



Plate 1: Survey area looking south

1.5 Site history and archaeological potential

1.5.1 The land immediately west and further north and east have been subject to geophysical survey (Archaeological Surveys, 2020). The survey located a small number of possible pits and ditches as well as evidence for a 19th century outfarm. The majority of the anomalies were associated with naturally formed features within the underlying geology although magnetically variable responses could relate to burnt material, possibly associated with the removal of trees. The settlement at Stonehill, 450m to the south, has medieval origins (Wiltshire HER MWI5313) and medieval pottery fragments (MWI5323) have been recorded 450m to the south west.

1.6 Geology and soils

- 1.6.1 The underlying solid geology across the site is mudstone from the Oxford Clay Formation (BGS, 2017).
- 1.6.2 The overlying soil across the survey area is from the Denchworth association and is a pelo-stagnogley consisting of a slowly permeable, seasonally waterlogged, clayey soil (Soil Survey of England and Wales, 1983).
- 1.6.3 The underlying geology and soils are frequently associated with low magnetic contrast and low levels of magnetic susceptibility. However, cut features of archaeological potential may be located where human activity has altered the magnetic characteristics of the soil sufficiently. The underlying geology and soils are, therefore, considered acceptable for magnetic survey.

2 METHODOLOGY

2.1 *Technical synopsis*

- 2.1.1 Magnetometry survey records localised magnetic fields that can be associated with features formed by human activity. Magnetic susceptibility and magnetic thermoremnance (also known as thermoremanence) are factors associated with the formation of localised fields.
- 2.1.2 Iron minerals within the soil may become altered by burning and the break down of biological material; effectively the magnetic susceptibility of the soil is increased, and the iron minerals become magnetic in the presence of the Earth's magnetic field. Accumulations of magnetically enhanced soils within features, such as pits and ditches, may produce magnetic anomalies that can be mapped by magnetic prospection.
- 2.1.3 Magnetic thermoremnance can occur when ferrous minerals have been heated to high temperatures such as in a kiln, hearth, oven etc. On cooling, a permanent magnetisation may be acquired due to the presence of the Earth's magnetic field. Certain natural processes associated with the formation of some igneous and metamorphic rock may also result in magnetic thermoremnance.
- 2.1.4 The localised variations in magnetism are measured as sub-units of the Tesla, which is a SI unit of magnetic flux density. These sub-units are nano Teslas (nT), which are equivalent to 10^{-9} Tesla (T). Additional details are set out in 2.2 below and within Appendix A.

2.2 *Equipment configuration, data collection and survey detail*

- 2.2.1 The detailed magnetic survey was carried out using a SENSYS MAGNETO@MXPDA 5 channel cart-based system. The instrument has 5 fluxgate gradiometers (FGM650) spaced 0.5m apart with readings recorded at 20Hz. The cart is pushed at walking speed and not towed. Each sensor is not zeroed in the field as the vertical axis alignment is precisely fixed leaving sensor offsets that are removed during data processing. The fixing of the vertical alignment ensures the sensors are not unduly influenced by localised magnetic fields and that the vertical component of a magnetic anomaly is measured. The gradiometers have a measurement range of ± 8000 nT, although the recorded range is ± 3000 nT, and resolution is around 0.1nT. They are linked to a Leica GS10 RTK GNSS with data recorded by SENSYS MAGNETO@MXPDA software on a rugged PDA computer system.
- 2.2.2 Due to the fixed offsets within the fluxgate sensors, as a result of the manufacturing and tensioning process, the survey data do not provide a visually useful dataset until a zero median traverse algorithm is applied. It is recognised that this has the potential to affect some anomalies detrimentally by removing linear features orientated parallel to survey transects. However, this has not been noted as a particular problem with the system due to the high resolution data collection,

generally long length of traverses and variability within the magnetic characteristics of a linear anomaly.

- 2.2.3 Data are collected along a series of parallel survey transects to achieve 100% coverage of the surveyable land. The length of each transect is variable and relates to the size of the survey area and other factors including ground conditions. A visual display allows accurate placing of transects and helps maintain the correct separation between adjacent traverses. Data are not collected within fixed grids and data points are considered to be random even though the data are collected in a systematic manner covering all accessible areas (Aspinall, Gaffney and Schmidt, 2009).
- 2.2.4 Fluxgate sensors are highly sensitive to temperature change and this manifests as drift during the course of a survey. This can be particularly noticeable during the morning as temperatures rise and the equipment warms or cools. Sensor drift within the course of a traverse will appear as a line trending from negative to positive after processing with a zero median traverse algorithm. To remove the potential for temperature drift, data were collected after a 20 minute stabilisation period and traverses were limited to a time of generally <100s.

2.3 *Data processing and presentation*

- 2.3.1 Magnetic data collected by the MAGNETO®MXPDA cart-based system are initially prepared using SENSYS MAGNETO®DLMGPS software. The software effectively allocates a geographic position for each data point and can compensate for fixed offsets present within the FGM650 sensors. The offsets are positive or negative values present on all fluxgate gradiometer sensors. Some systems use manual or electronic balancing to effectively zero the sensors; however, this is a short term measure that is prone to drift through temperature changes and vibration and can easily be incorrectly set due to localised magnetic fields. The FGM650 sensors are very accurately aligned to the vertical magnetic gradient and are highly stable showing negligible drift on long traverses. The offset values are removed using TerraSurveyor software.
- 2.3.2 Survey tracks are analysed and georeferenced raw data (UTM Z30N) are then exported in ASCII format for further analysis and display within TerraSurveyor. The removal of the offset values (compensation) of the sensors is also carried out in TerraSurveyor using a zero median traverse function. Data are then considered to be minimally processed. Note: without the zero median traverse function it is not possible to create a meaningful data plot as all sensors have a different offset value. Although a zero median traverse algorithm can remove anomalies aligned with the survey tracks, in practice this rarely occurs due to the use of long traverses, high resolution measurement and variability within the magnetic susceptibility of long linear features.
- 2.3.3 The minimally processed data are collected between limits of $\pm 3000\text{nT}$ and clipped for display at $\pm 3\text{nT}$. Data are interpolated to a resolution of effectively

0.5m between tracks and 0.15m along each survey track.

- 2.3.4 Additional data processing has been carried out in the form of high pass filtering. This effectively removes low frequency variation along a traverse that has been caused by large magnetic bodies, cultivation or rapid temperature change. Data treated to additional processing have been compared to unprocessed data to ensure that no significant anomalies have been removed.
- 2.3.5 Appendix C contains metadata concerning the survey and data attributes and is derived directly from TerraSurveyor. Reference should be made to Appendix B for further information on processing.
- 2.3.6 A TIF file is produced by TerraSurveyor software along with an associated world file (.TFW) that allows automatic georeferencing (OSGB36 datum) when using GIS or CAD software. The main form of data display used in the report is the minimally processed greyscale plot. With regard to the Sensys MXPDA, minimally processed data are considered by the manufacturer to be data that are compensated by SENSYS MAGNETO DLMGPS software, see 2.3.1 and 2.3.2. Note: traceplots are not considered to be appropriate as they do not provide an accurate or useful assessment of the magnetic anomalies due to the very high density of data collection. In addition, traceplots cannot be meaningfully plotted against base mapping and in areas of complexity traces may be lost or highly confused. Traceplots may be used to demonstrate characteristic magnetic profiles across discrete features where it is considered beneficial.
- 2.3.7 The raster images are combined with base mapping using ProgeCAD Professional 2021, creating DWG (2018) file formats. All images are externally referenced to the CAD drawing in order to maintain good graphical quality. The CAD plots are effectively georeferenced facilitating relocation of features using GNSS, resection method, etc.
- 2.3.8 An abstraction and interpretation is drawn and plotted for all geophysical anomalies located by the survey. Anomalies are abstracted using colour coded points, lines and polygons. All plots are scaled to landscape A3 for paper printing. Appendix E sets out CAD layer names with colour and graphic content for each interpretation category, see 3.3.
- 2.3.9 A brief summary of each anomaly, with an appropriate reference number, is set out in list form within the results (Section 3) to allow a rapid and objective assessment of features within each survey area.
- 2.3.10 A digital archive is produced with this report, see Appendix D below. The main archive is held at the offices of Archaeological Surveys Ltd.

3 RESULTS

3.1 General assessment of survey results

- 3.1.1 The detailed magnetic survey was carried out over approximately 1ha within a single land parcel.
- 3.1.2 Magnetic anomalies located can be generally classified as positive anomalies of an uncertain origin, linear anomalies of an agricultural origin, anomalies with a natural origin, areas of magnetic disturbance, strong discrete dipolar anomalies relating to ferrous objects and strong multiple dipolar linear anomalies relating to buried services or pipelines.
- 3.1.3 Anomalies located within each survey area have been numbered and are described in 3.4 below.

3.2 Statement of data quality and factors influencing the interpretation of anomalies

- 3.2.1 Data are considered representative of the magnetic anomalies present within the site. There are no significant defects within the dataset.
- 3.2.2 A linear zone was unsurveyable underneath very high voltage overhead power cables due to electromagnetic interference induced into the geophysical equipment. In such situations the system shuts down to minimise damage to the electronics and avoid the recording of highly erratic data. Survey was also avoided in the vicinity of a steel pylon at the southern end of the survey area due to high magnitude magnetic disturbance.
- 3.2.3 The site appears to contain widespread magnetically enhanced soil, particularly within the northern part of the field, and this has produced strongly contrasting linear anomalies associated with cultivation. It is unclear whether this material has been deliberately introduced as a 'soil conditioner' or whether it relates to spreads of burnt material associated with other activities such as tree burning.

3.3 Data interpretation

- 3.3.1 The list of sub-headings below attempts to define a number of separate categories that reflect the range and type of features located during the survey. A general explanation of the characteristics of the magnetic anomalies is set out for each category in order to justify interpretation, see Table 1.

Interpretation category	Description and origin of anomalies
Anomalies with an uncertain origin	The category applies to a range of anomalies where <u>there is not enough evidence to confidently suggest an origin</u> . Anomalies in this category <u>may well be related to archaeologically significant features, but equally relatively modern features, geological/pedological features and agricultural features should be considered</u> . Morphology may be unclear or uncharacteristic and there may be a lack of additional supporting information. Positive anomalies are indicative of magnetically

	enhanced soils that may form the fill of 'cut' features or may be produced by accumulation within layers or 'earthwork' features; soils subject to burning may also produce positive anomalies. Negative anomalies are produced by material of comparatively low magnetic susceptibility such as stone and subsoil.
<i>Anomalies with an agricultural origin</i>	The anomalies are often linear and form a series of parallel responses or are parallel to extant land boundaries. Where the response is broad, former ridge and furrow is likely; narrow response is often related to modern ploughing. This category <u>does not include</u> agricultural features of early date or considered to be of archaeological potential (e.g. animal stockades, enclosures, farmsteads, etc).
<i>Anomalies associated with magnetic debris</i>	Strong discrete dipolar anomalies are responses to ferrous objects within the topsoil.
<i>Anomalies with a modern origin</i>	The magnetic response is often strong and dipolar indicative of ferrous material and may be associated with extant above surface features such as wire fencing, cables, pylons etc. Often a significant area around these features has a strong magnetic flux which may create magnetic disturbance; such disturbance can effectively obscure low magnitude anomalies if they are present. Fluxgate sensors may respond erratically adjacent to strong magnetic sources. Buried services may produce characteristic multiple dipolar anomalies dependant upon their construction.

Table 1: List and description of interpretation categories

3.4 List of anomalies

Area centred on OS NGR 399670 189725, see Figs 03 – 05.

Anomalies with an uncertain origin

(1) – The survey area contains a small number of discrete positive anomalies. They have a response of 4-20nT; however, it is not possible to determine if they relate to anthropogenic or natural features.

(2) – Zones of magnetically variable responses in the northern part of the survey area appear to relate to and indicate magnetically enhanced soil. It is possible that the magnetic soil is related to material brought in as part of soil improving in the past. It may relate to widespread burnt material from industrial activity or possibly tree removal and burning.

Anomalies with an agricultural origin

(3) – Linear anomalies on slightly different orientations relate to different phases of agricultural activity, some of which could relate to ridge and furrow.

Anomalies with a modern origin

(4) – Magnetic disturbance in the south eastern part of the survey area has been caused by the overhead power cables.

(5) – Magnetic disturbance along the northern edge of the survey area is a response to a buried service that just extends into the north eastern part of the survey area.

4 CONCLUSION

- 4.1.1 The geophysical survey located a small number of discrete, pit-like anomalies with magnetic enhancement. It is not clear if these have an anthropogenic or natural origin. Magnetically variable responses of uncertain origin and general magnetic enhancement of soil was located in the northern part of the survey area. The enhancement appears to be disturbed by agricultural activity, and it may relate to soil conditioning or spreads of burnt material within the topsoil, perhaps related to industrial activity or tree removal.

5 REFERENCES

- Archaeological Surveys, 2020. *Land adjacent to Minety Substation, Charlton/Hankerton, Wiltshire, Magnetometer Survey Report*. Ref: J811. Unpublished typescript document.
- Archaeological Surveys, 2022. *Battery Storage Site, Stonehill, Wiltshire, Geophysical Survey Written Scheme of Investigation*. Unpublished typescript document.
- Aspinall, A., Gaffney, C. and Schmidt, A. 2009. *Magnetometry for Archaeologists*. Lanham (US), AltaMira Press.
- British Geological Survey, 2017. *Geology of Britain viewer, [online]* available from <http://mapapps.bgs.ac.uk/geologyofbritain3d/index.html> [accessed 18/7/2022].
- Chartered Institute for Archaeologists, 2014 (updated 2020). *Standard and Guidance for archaeological geophysical survey*. ClfA, University of Reading.
- European Archaeological Council, 2015. *EAC Guidelines for the Use of Geophysics in Archaeology: Questions to Ask and Points to Consider*. Europae Archaeologia Consilium and Association Internationale sans But Lucratif, Belgium.
- Institute for Archaeologists, 2002. *The use of Geophysical Techniques in Archaeological Evaluations*. IfA Paper No. 6. IfA, University of Reading.
- Schmidt, A., 2013. *Geophysical Data in Archaeology: A Guide to Good Practice*. Oxbow Books.
- Soil Survey of England and Wales, 1983. *Soils of England and Wales, Sheet 5 South West England*.

Appendix A – basic principles of magnetic survey

Iron minerals are always present to some degree within the topsoil and enhancement associated with human activity is related to increases in the level of magnetic susceptibility and thermoremanent material. Magnetic susceptibility is an induced magnetism within a material when it is in the presence of a magnetic field. This can be thought of as effectively permanent due to the presence of the Earth's magnetic field. Thermoremanent magnetism occurs when ferrous material is heated beyond a specific temperature known as the Curie Point. Demagnetisation occurs at this temperature with re-magnetisation by the Earth's magnetic field upon cooling.

Enhancement of magnetic susceptibility can occur in areas subject to burning and complex fermentation processes on biological material; these are frequently associated with human settlement. Thermoremanent features include ovens, hearths, and kilns. In addition thermoremanent material such as tile and brick may also be associated with human activity and settlement.

Silting and deliberate infilling of ditches and pits with magnetically enhanced soil can create an area of enhancement compared with surrounding soils and subsoils into which the feature is cut. Mapping enhanced areas will produce linear and discrete anomalies allowing an assessment and characterisation of hidden subsurface features.

It should be noted that areas of negative enhancement can be produced from material having lower magnetic properties compared to the topsoil. This is common for many sedimentary bedrocks and subsoils which were often used in the construction of banks and walls etc. Mapping these 'negative' anomalies may also reveal archaeological features.

Magnetic survey or magnetometry can be carried out using a fluxgate gradiometer and may be referred to as gradiometry. The SENSYS gradiometer is a passive instrument consisting of two fluxgate sensors mounted vertically 65cm apart. The instrument is carried about 10-20cm above the ground surface and the upper sensor measures the Earth's magnetic field as does the lower sensor but this is influenced to a greater degree by any localised buried magnetic field. The difference between the two sensors will relate to the strength of the magnetic field created by the buried feature.

There are a number of factors that may affect the magnetic survey and these include soil type, local geology and previous human activity. Situations arise where magnetic disturbance associated with modern services, metal fencing, dumped waste material etc., obscures low magnitude fields associated with archaeological features.

Appendix B – data processing notes

Clipping

Minimum and maximum values are set and replace data outside of the range with those values. Extreme values are removed improving colour or greyscale contrast associated with data values that may be archaeologically significant. Different ranges are applied to data in order to determine the most suitable for anomaly abstraction and display.

High Pass Filter

Removes low frequency anomalies within the data that are not considered to be archaeologically significant and may be natural in origin. A window passes over the data, the mean of all the data within the window is subtracted from the centre value. The size of the window is adjusted as is the weighting which may be uniform or Gaussian. The process is used to improve the visibility of anomalies of interest.

Zero Median/Mean Traverse

The median (or mean) of data from each traverse is calculated ignoring data outside a threshold value, the median (or mean) is then subtracted from the traverse. The process is used to equalise differences between the offset values of the gradiometer sensors. The process can remove archaeological features that run along a traverse but with the high resolution datasets created by the Sensys FGM650 sensors and the method of data collection this has not been a notable problem. In fact, the removal of offsets using software avoids carrying out a balancing procedure on site, which inevitably can never be done in magnetically clean

conditions and results in improperly aligned fluxgate sensors and/or electronic adjustment values.

Appendix C – survey and data information

Minimally processed data		Stats		Stats	
Filename:	J926-mag-Area1-proc.xcp	Max:	3.29	Max:	3.27
Instrument Type:	Sensys DLMGPS	Min:	-3.25	Min:	-3.24
Units:		Std Dev:	0.98	Std Dev:	0.89
UTM Zone:	30U	Mean:	0.06	Mean:	0.03
Survey corner coordinates (X/Y):	OSGB36	Median:	0.02	Median:	-0.01
Northwest corner:	399611.05, 189795.03 m	Composite Area:	1.5551 ha	GPS based Proce5	
Southeast corner:	399719.95, 189652.23 m	Surveyed Area:	1.1245 ha	1 Base Layer.	
Collection Method:	Randomised	PROGRAM		2 Unit Conversion Layer (Lat/Long to UTM).	
Sensors:	5	Name:	TerraSurveyorPre	3 DeStripe Median Traverse:	
Dummy Value:	32702	Version:	3.0.36.24	4 High pass Uniform (median) filter: Window dia: 150	
Dimensions		GPS based Proce4		5 Clip from -3.00 to 3.00	
Survey Size (meters):	109 m x 143 m	1 Base Layer.			
X&Y Interval:	0.15 m	2 Unit Conversion Layer (Lat/Long to UTM).			
Source GPS Points:	Active: 437783, Recorded: 437783	3 DeStripe Median Traverse:			
		4 Clip from -3.00 to 3.00			
		Filtered data			

Appendix D – digital archive

Archaeological Surveys Ltd hold the primary digital archive at their offices in Wiltshire. Data are backed-up onto an on-site data storage drive and at the earliest opportunity data are copied to CD ROM for storage on-site and off-site.

A PDF copy will be supplied to the Wiltshire Historic Environment Record with greyscale images and abstraction layers made available on request. The report will also be uploaded to the Online Access to the Index of archaeological investigations (OASIS).





Archive contents:

File type	Naming scheme	Description
Data	J926-mag-[area number/name].asc J926-mag-[area number/name].xcp J926-mag-[area number/name]-proc.xcp	Raw data as ASCII CSV TerraSurveyor raw data TerraSurveyor minimally processed data
Graphics	J926-mag-[area number/name]-proc.tif	Image in TIF format
Drawing	J926-[version number].dwg	CAD file in 2018 dwg format
Report	J926 report.odt	Report text in LibreOffice odt format

Table 2: Archive metadata

Appendix E – CAD layers for abstraction and interpretation plots

The table below sets out Archaeological Surveys Ltd CAD layer names with associated colours and graphical content. Where CAD files are available layers may be extracted for further CAD/GIS use. Note: hatched polygon boundaries are contained within layers with the RGB colour code 254, 255, 255 (near white) in order to prevent their visibility.

Report sub-heading and associated CAD layer names	Colour with RGB index	Layer content
Anomalies with an uncertain origin		
AS-ABST MAG POS LINEAR UNCERTAIN	 255,127,0	Line, polyline or polygon (solid)
AS-ABST MAG POS DISCRETE UNCERTAIN	 255,127,0	Solid donut, point or polygon (solid)
AS-ABST MAG POS UNCERTAIN	 255,127,0	Polygon (cross hatched ANSI37)
Anomalies with an agricultural origin		
AS-ABST MAG AGRICULTURAL	 Green 0,255,0	Line or polyline
Anomalies associated with magnetic debris		

AS-ABST MAG STRONG DIPOLAR		132, 132, 132	Solid donut, point or polygon (solid)
Anomalies with a modern origin			
AS-ABST MAG DISTURBANCE		132, 132, 132	Polygon (hatched ANSI31)
AS-ABST MAG SERVICE		132, 132, 132	Line or polyline
Anomalies with a natural origin			
AS-ABST MAG NATURAL FEATURES		Yellow 255,255,0	Dots

Table 3: CAD layering

Appendix F – copyright and intellectual property

This report may contain material that is non-Archaeological Surveys Ltd copyright (eg Ordnance Survey, Crown Copyright) or the intellectual property of third parties, which we are able to provide for limited reproduction under the terms of our own copyright licences, but for which copyright itself is non-transferable by Archaeological Surveys Ltd. Users remain bound by the conditions of the Copyright, Design and Patents Act 1988 with regard to multiple copying and electronic dissemination of this report.

Archaeological Surveys Ltd shall retain intellectual property rights for the materials and records created as part of this project. A non-exclusive and royalty-free licence shall be granted to the client on full payment of works in order for them to use, reproduce and enhance the reports, documentation, graphics and illustrations produced as part of this project for the purpose for which they were commissioned.

A non-exclusive licence will also be granted to the local authority for planning use and within the Historic Environment Record for public dissemination upon payment by the client.

Please note that a non-exclusive licence does not transfer full copyright which remains with Archaeological Surveys Ltd. A non-exclusive licence also does not allow the licensee to pass on usage rights to third parties.

Any document produced to meet planning requirements may be freely copied for planning, development control, research and outreach purposes without recourse to the originator, subject to all due and appropriate acknowledgements being provided and to the terms of the original contract with the client. Archaeological Surveys Ltd shall retain the right to be identified as the author and originator of the material.

The report, data and any associated material produced by Archaeological Surveys Ltd cannot be freely used for any commercial activity other than those set out above. Any unauthorised use will be considered to be in breach of copyright including the use of graphic items by third parties unless an additional non-exclusive licence has been granted by Archaeological Surveys Ltd.

Title of Goods remains with Archaeological Surveys Ltd until payment has cleared. Late payment may jeopardise any planning decision as there will be no transfer of title, licensing or any other right of copy or use of this report. Archaeological Surveys Ltd do not give permission for use of the report and associated data in cases of late payment. Any such use will be considered to be in breach of copyright. Late payment may also incur interest at 8% over the Bank of England base rate. Non-payment will be pursued by legal action.



**Geophysical Survey
Battery Storage Site
Stonehill
Wiltshire**

Map of survey area



Survey location



● Survey location

Site centred on OS NGR
ST 99670 89725

SCALE 1:25 000



SCALE TRUE AT A3

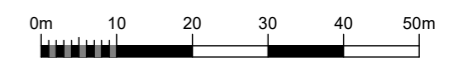
**Geophysical Survey
Battery Storage Site
Stonehill
Wiltshire**

Referencing information

Referencing grid to OSGB36 datum at 50m intervals

- 399650 189700
- Survey tracks
- ⋯ Survey track start
- ⋯ Survey track stop

SCALE 1:1000

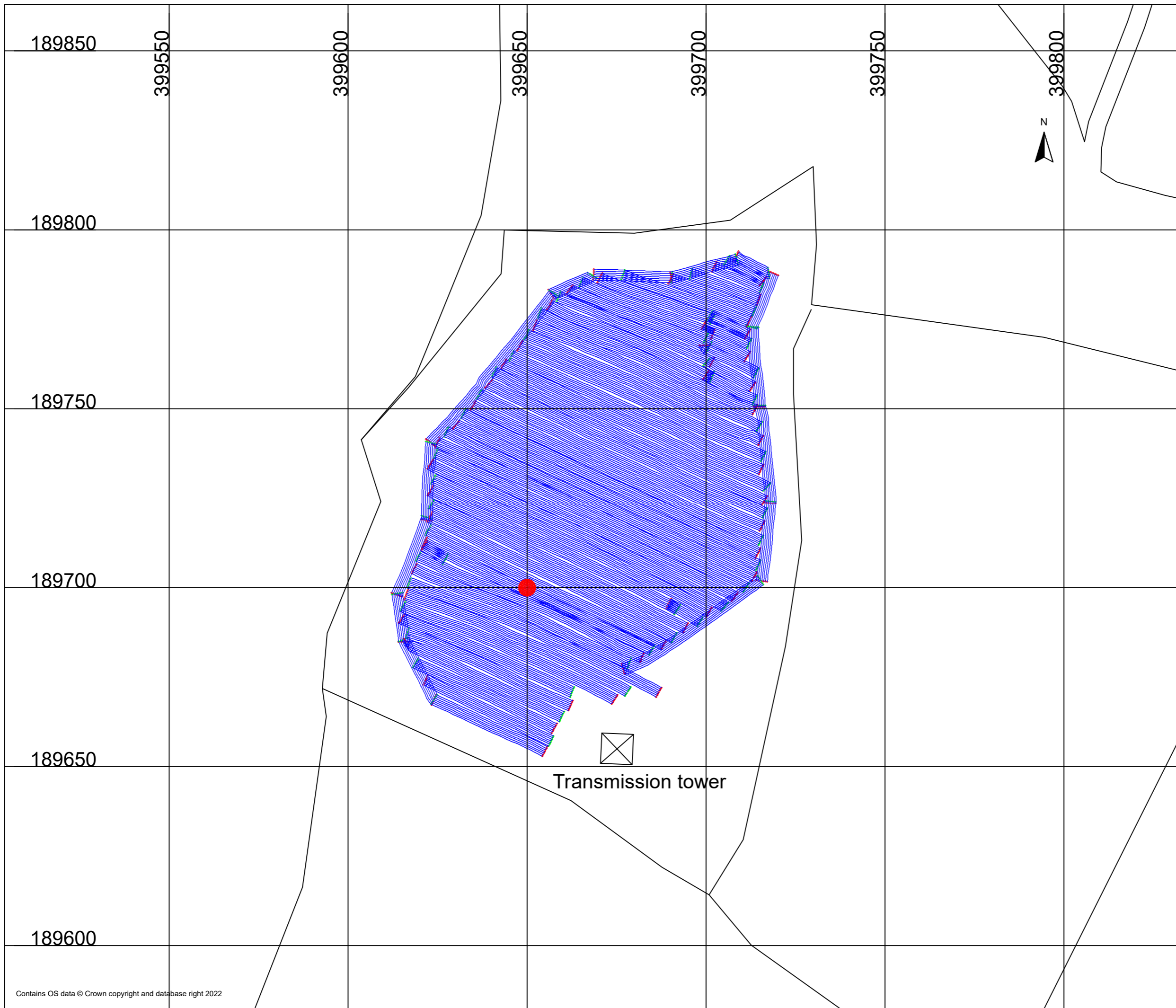


SCALE TRUE AT AS

DRAWN BY
KTD

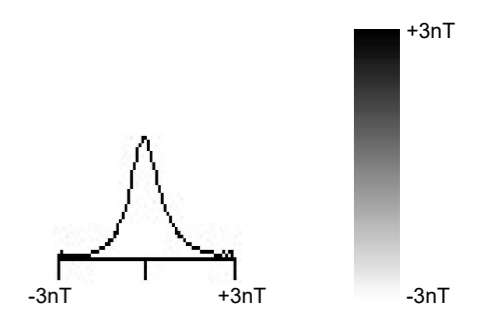
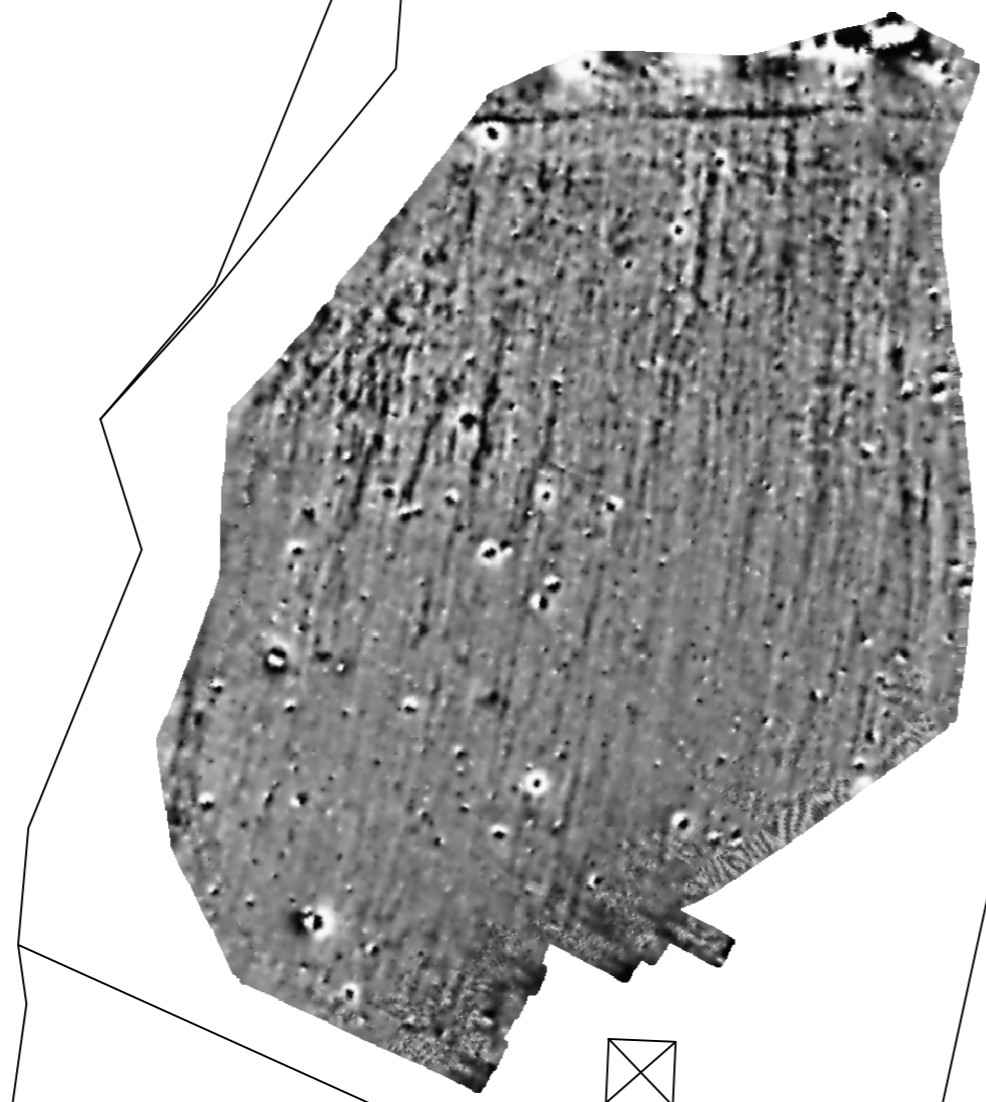
CHECKED BY
DJS

FIG 02

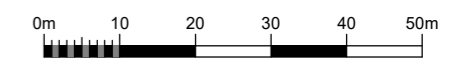


**Geophysical Survey
Battery Storage Site
Stonehill
Wiltshire**

**Greyscale plot of minimally
processed magnetometer data**



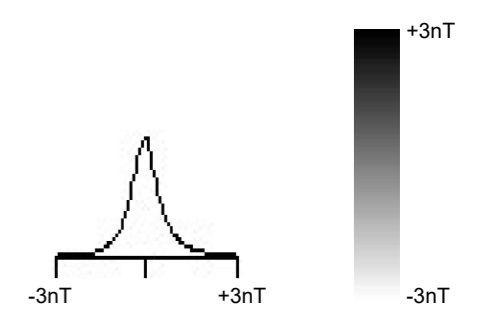
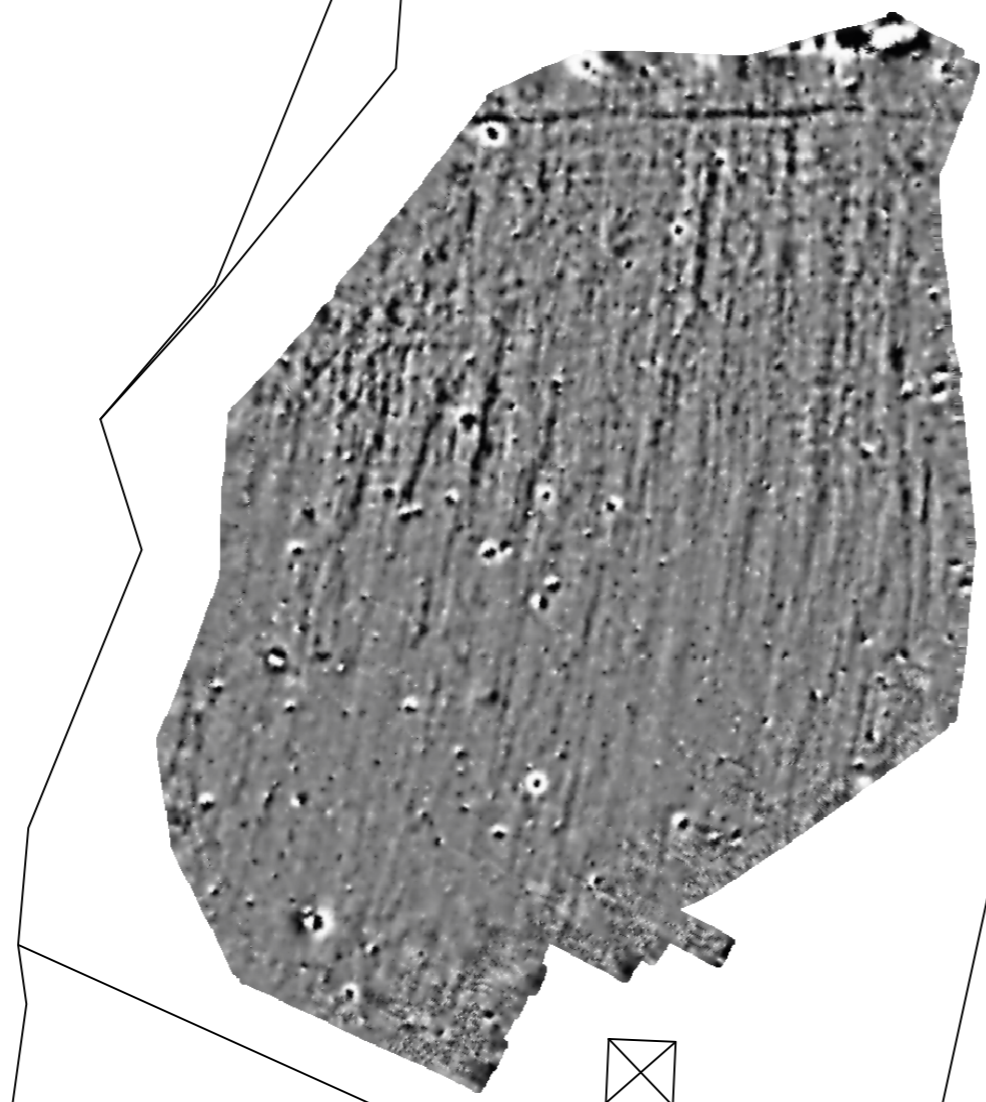
SCALE 1:1000



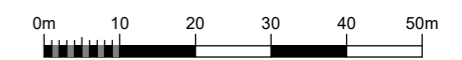
SCALE TRUE AT AS

**Geophysical Survey
Battery Storage Site
Stonehill
Wiltshire**

**Greyscale plot of
filtered magnetometer data**










SCALE 1:1000



SCALE TRUE AT AS

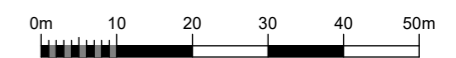
**Geophysical Survey
Battery Storage Site
Stonehill
Wiltshire**

**Abstraction and interpretation of
magnetic anomalies**

-  Positive linear anomaly - of uncertain origin
-  Linear anomaly - of agricultural origin
-  Discrete positive response - possible pit-like feature
-  Variable magnetic enhancement of uncertain origin
-  Magnetic disturbance from ferrous material
-  Strong multiple dipolar linear anomaly - pipeline / cable / service
-  Strong dipolar anomaly - ferrous object



SCALE 1:1000



SCALE TRUE AT A3

DRAWN BY
KTD

CHECKED BY
DJS

FIG 05