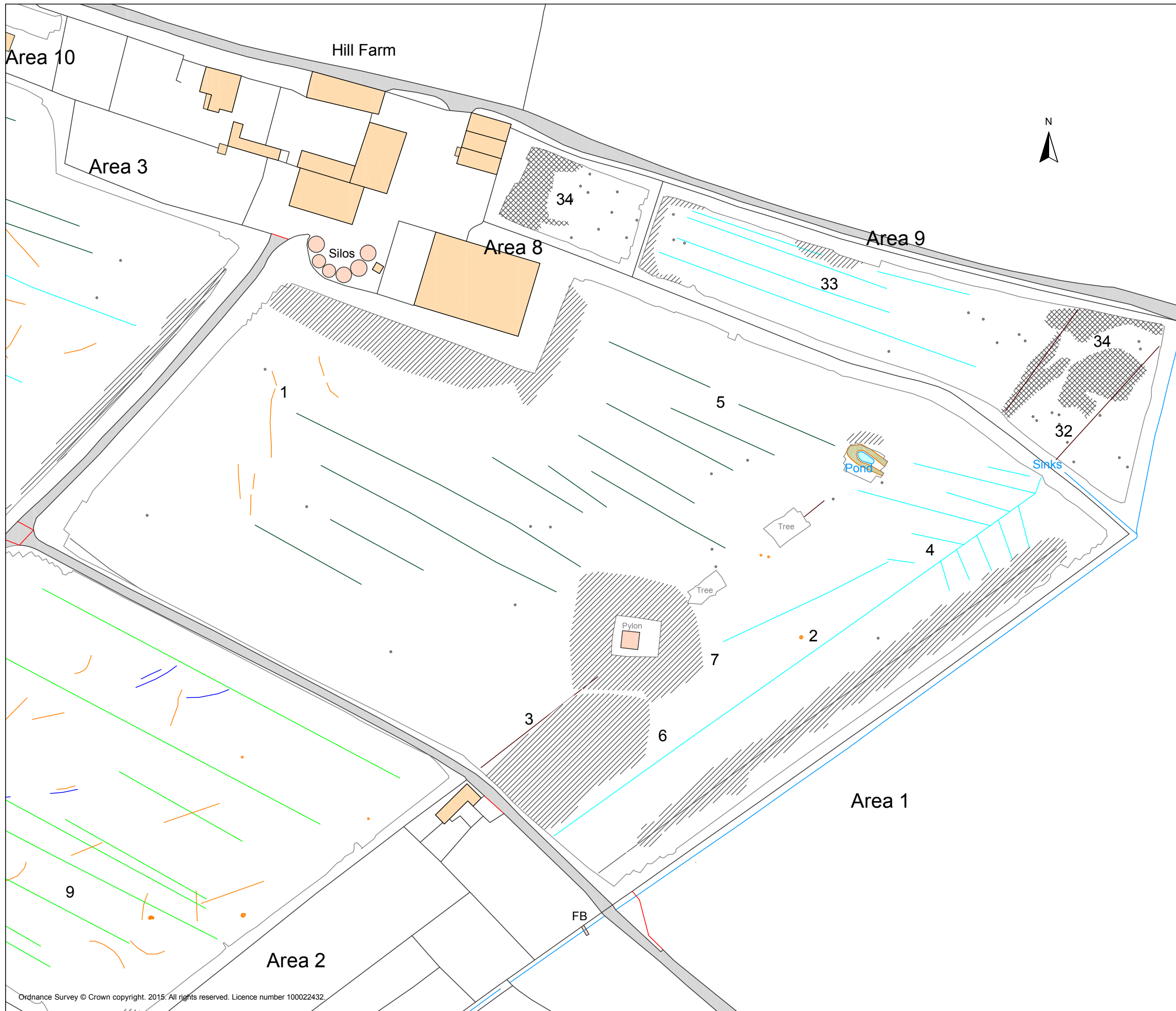










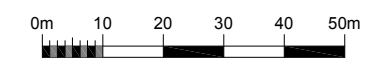
**Geophysical Survey**  
**Land off Wentworth Drive**  
**Nuneaton**  
**Warwickshire**

**Abstraction and interpretation of**  
**magnetic anomalies -**  
**Areas 1, 8 & 9**



-  Positive linear anomaly - of uncertain origin
-  Linear anomaly - of agricultural origin
-  Weak multiple dipolar linear anomaly - land drain
-  Positive linear anomaly - former field boundary
-  Magnetic debris - spread of magnetically thermoremanent/ferrous material
-  Magnetic disturbance from ferrous material
-  Strong multiple dipolar linear anomaly - pipeline / cable / service
-  Strong dipolar anomaly - ferrous object

SCALE 1:1250



SCALE TRUE AT A3

DRAWN BY  
KTD

CHECKED BY  
DJS

FIG 08