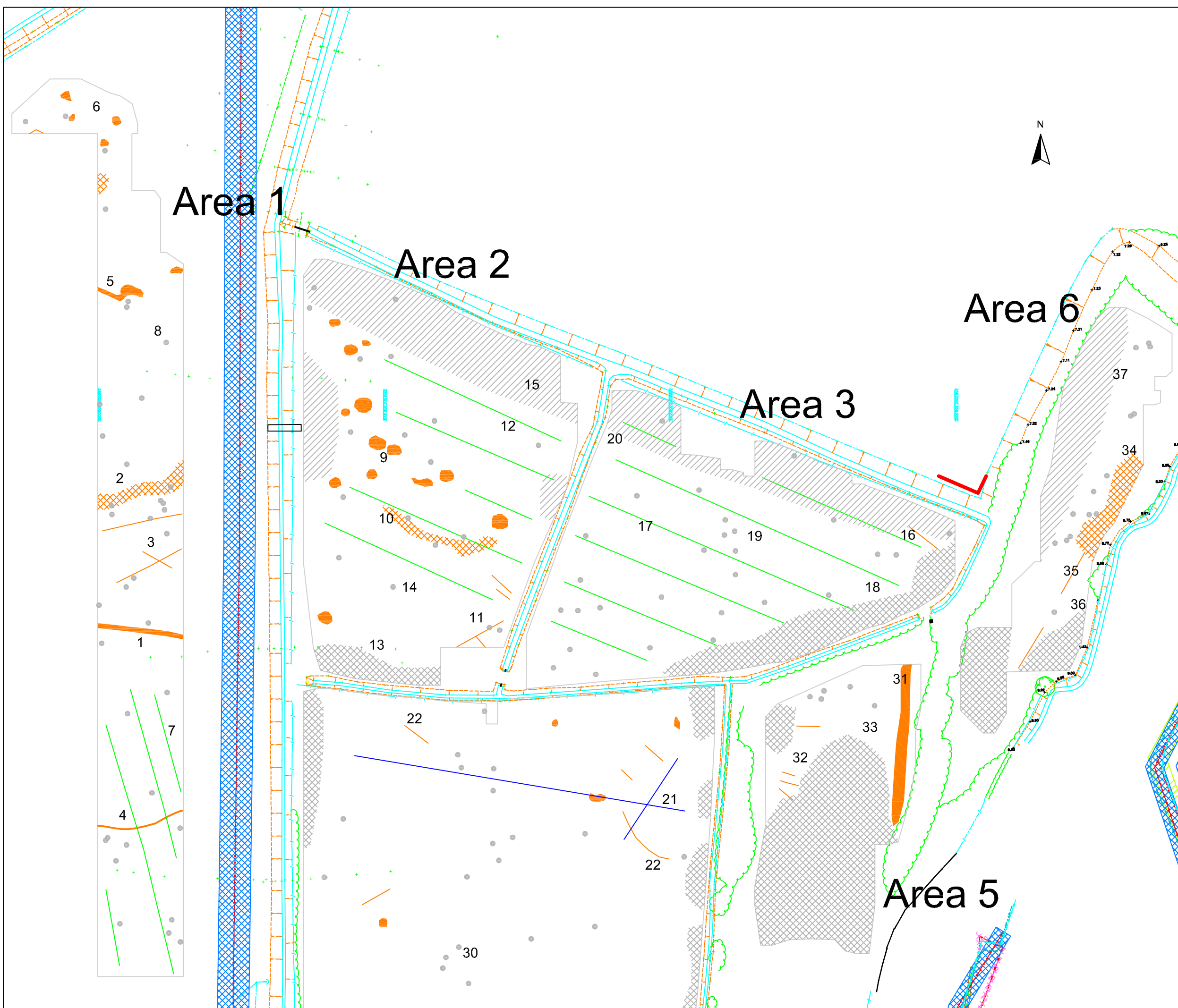


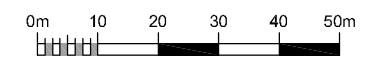
**Geophysical Survey
Ashton Vale
Bristol**

**Abstraction and interpretation of
magnetometer anomalies -
Areas 1, 2, 3, 5 and 6**



- Positive linear anomaly - possible ditch-like feature
- Linear anomaly of agricultural origin
- Negative linear anomaly - material of low magnetic susceptibility
- Discrete positive response - possible pit-like feature
- Magnetic debris - spread of magnetically thermoremanent/ferrous material
- Magnetic disturbance from ferrous material
- Strong dipolar anomaly - ferrous object

SCALE 1:1250



SCALE TRUE AT A3