

**Land Off Pear Tree Place,  
Great Finborough, Suffolk**

**Planning application: DC/18/03710**

**HER Ref: FNG 063**

**Archaeological Evaluation Report**

(© John Newman BA MCIFA, 2 Pearsons Place, Henley, Ipswich, IP6 0RA)

(October 2019)

(Tel: 01473 832896 Email: [johnnewman2@btinternet.com](mailto:johnnewman2@btinternet.com) )

**Site details for HER**

Name: Land off Pear Tree Place, Great Finborough, Suffolk, IP14 3AQ

Clients: Ruby Homes (East Anglia) Ltd

Planning authority: Mid Suffolk DC

Planning application ref: DC/18/03710 (Conditions 4 & 5)

Development: Erection of 7 dwellings

Date of fieldwork: 18 September, 2019

HER ref: FNG 063

OASIS ref: johnnewm1-367583

Grid ref: TM 0136 5726

Site area: 3600m<sup>2</sup>

Recent land use: Formerly arable land

## Contents

Summary

1. Introduction & background

2. Evaluation methodology

3. Results

Table 1: Trench details

4. Conclusion

Fig. 1: Site location

Fig. 2: Location of evaluation trenches

List of appendices

Appendix I- Images

Appendix II- Written scheme for evaluation

Appendix III- OASIS data collection form

*Summary: Great Finborough, land off Pear Tree Place (FNG 063, TM 0136 5726) evaluation trenching for a residential development on the south-eastern side of the historic village core did not reveal any features or any finds of pre-modern date. (John Newman Archaeological Services for Ruby Homes (East Anglia) Ltd).*

## 1. Introduction & background

1.1 Last and Tricker Architects on behalf of their client Ruby Homes (East Anglia) Ltd commissioned John Newman Archaeological Services (JNAS) to undertake the archaeological evaluation works for a planned 7 dwelling residential development on land off Pear Tree Place, Great Finborough (see Fig. 1) that has been given planning consent under application DC/18/03710. The evaluation requirements were set by Dr H Cutler of the Suffolk CC Archaeological Service (SCCAS) with the aim of gaining a representative sample by trial trenching of the planned development area. The Written Scheme of Investigation for the archaeological evaluation (see Appendix II) was subsequently prepared by JNAS in order to gain a conditional discharge and allow the trenching to go ahead before any other ground works are undertaken.

1.2 Great Finborough parish is located in south central Suffolk to the south-west of Stowmarket on part of the Till plateau of central Suffolk in an area characterised by a gently rolling landscape on heavy clay soils derived from the underlying chalky till with flints. Historically the settlement pattern at Great Finborough is made up of a village strung out along a main, north-south orientated, street and a scatter of farms and cottages along roads and lanes across the parish and around various greens in a manner characteristic of the claylands of central Suffolk. The planned development site at land off Pear Tree Place is some 40m east of the High Road that runs through the village and is 700m south of the parish church and towards the southern parish boundary. At the time of the evaluation the site was under a grass cover having been arable land in the recent past.

1.3 The British Geological Survey (BGS) describes the drift deposits as being chalky till of the Lowestoft Formation with outwash sands and gravels. The site, which slopes down very gently from south-west to north-east, is at c65m OD in an area of gentle topography with a small stream, now a field boundary, indicated on modern OS maps 100m to the north which feeds into another stream c500m to the east.

1.4 Archaeological interest in this development was generated by its proximity to areas where medieval and Post medieval finds and features (HER FNG 032 & FNG 053) have been recorded in addition to being close to the find spot of prehistoric flint and metal finds (HER FNG 047). Therefore this development had the potential to reveal and disturb below-ground heritage assets of prehistoric and medieval to early Post medieval date.

## 2. Evaluation methodology

2.1 The development area was trenched to a plan agreed with SCCAS (see Fig. 2). The trenching was carried out using a medium sized 360 machine equipped with a 1500mm flat bucket which was under archaeological supervision at all times and any indistinct areas were hand cleaned as necessary to improve clarity with the trenches being 1.80m wide.

2.2 The sides and base of trenches and the upcast spoil were examined visually and scanned with a metal detector for any finds as the evaluation progressed with the detector search extending to the areas between the trenches. Site visibility for features and finds is considered to have been good throughout the evaluation which was undertaken under dry weather conditions. At the end of the evaluation the location of the trenches were plotted from nearby mapped features and as the works progressed a full photographic record in digital format (see Appendix I) was taken.

### 3. Results

3.1 The relevant details for the evaluation trenches are summarised in the table below (see also Fig. 2 and Appendix I):

Trench	Orientation	Length (m)	Topsoil depth (mm)	Subsoil depth (mm)	Drift geology	Archaeological/natural features & finds
1	North-south	20	250	150 mid brown clay subsoil	Stiff light brown chalky clay	No features and the only finds were small fragments of Post medieval brick and tile
2	East-west	20	250	150 as T1	As T1	As T1
3	East-west	20	250	150 as T1	As T1	As T1 plus one clay tobacco pipe stem frag
4	East-west	20	250	100 as T1	As T1	As T1
5	North-south	20	250	100 as T1	As T1	As T1 plus two small clay tobacco pipe stem frags
		100m (180m <sup>2</sup> )	250	100-150		No features and only a few stray finds of later Pmed date

Table 1: Trench details

3.2 As outlined in table 1 above the trenches revealed a 250mm depth of topsoil above 100mm to 150mm of mid brown clay subsoil giving a trench depth of 350mm to 400mm above glaciofluvial deposits which were a uniform stiff light brown chalky clay with flints.

3.3 No features of any date were revealed in the 8 trenches and the only stray finds were occasional small whiteware pottery sherds and small brick and tile fragments of recent date plus one small (wt. 3g) sherd of sandy medieval coarseware.

3.4 The metal detector search produced few non-ferrous stray finds with two plain copper alloy buttons of 19<sup>th</sup> to earlier 20<sup>th</sup> century date, a decimal 1p coin and a few small sheet lead fragments of indeterminate date.

### 4. Conclusion

4.1 With negative results from the evaluation trenching with regard to archaeological deposits of any significance it was agreed with Dr Cutler of SCCAS that a search

from the County Historic Environment Record for local sites and finds would not be required in this case.

4.2 While this site is located close to recorded finds of prehistoric date and finds and features of medieval and Post medieval date no archaeological features were revealed in the trenches and the only stray finds were small and of Post medieval date. These finds in all probability being indicative of material incorporated in manuring scatters on an area where the negative trenching results points to simple agricultural use in the past. From these negative evaluation results with regard to features of any significance it is therefore recommended that no further archaeological works need to be carried out for this residential development on this site off Pear Tree Place, Great Finborough.

**Archive-** to be deposited with the Suffolk CC Archaeological Service under the HER ref: FNG 063.

**Disclaimer-** any opinions regarding the need for further archaeological work in relation to this proposed development are those of the author's alone. Formal comment regarding the need for further work must be sought from the official Archaeological Advisors to the relevant Planning Authority.

**(Acknowledgements: JNAS is grateful to John the digger operator for his close cooperation)**

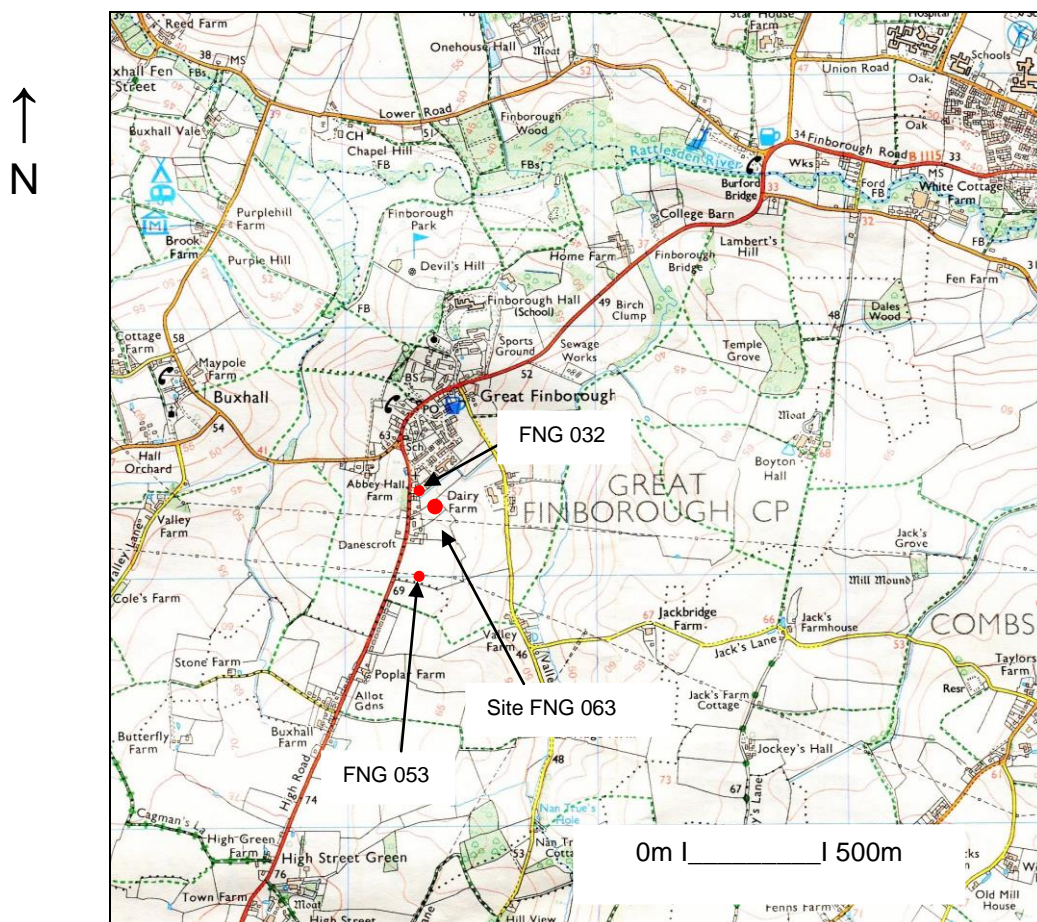


Fig. 1: Site location

(Ordnance Survey © Crown copyright 2006 All rights reserved Licence No 100049722)



Fig. 2: Location of evaluation trenches (light blue- planned new footprint areas)  
 (Ordnance Survey © Crown copyright 2019 All rights reserved Licence No 100049722)

## Appendix I- Images



General view from southwest



Trench 1 from south





Trench 1 deposit profile



Trench 2 from west



Trench 2 deposit profile



Trench 3 from west



Trench 3 deposit profile



Trench 4 from west



Trench 4 deposit profile



Trench 5 from south



Trench 5 deposit profile

**Land Off Pear Tree Place,  
Great Finborough, Suffolk**

**Written Scheme of Investigation for  
Archaeological Evaluation**

## **Site details**

Name: Land off Pear Tree Place, Great Finborough, Suffolk, IP14 3AQ

Client: Ruby Homes (EA) Ltd

Local planning authority: Mid Suffolk DC

Planning application ref: DC/18/03710

Proposed development: Erection of 7 dwellings

Proposed date for evaluation: SCCAS Brief for a Trenched Archaeological Evaluation\_Land off Pear Tree Place, Great Finborough\_2018\_03710

Brief ref: SCCAS Brief for a Trenched Archaeological Evaluation

Grid ref: TM 0136 5726

Area: 0.36 ha

Current site use: Agricultural use

## **Contents**

1. Introduction
2. Location, Topography & Geology
3. Archaeological & Historical Background
4. Aims of the Site Evaluation
5. Methodology
6. Risk Assessment
7. Specialists

Proposed location of trial trenches

# John Newman Archaeological Services

---

## 1. Introduction

1.1 Last and Tricker on behalf of their client Ruby Homes (EA) Ltd have commissioned John Newman Archaeological Services (JNAS) to undertake the archaeological site evaluation on a residential development that has received planning consent. This written scheme of investigation (WSI) details the background to the archaeological requirements for planning application DC/18/03710 and how JNAS will implement the requirements of the Brief for Archaeological Evaluation set by Dr H Cutler of the Suffolk CC Archaeological Service (SCCAS). The WSI will also set out how potential risks will be mitigated. This overall proposed development concerns the construction of new dwellings on land off Pear Tree Place, Great Finborough.

1.2 The evaluation will be carried out to the standards set regionally in the *Standards for Field Archaeology in the East of England (EAA Occ. Papers 14, 2003)*, locally in *Requirements for Trenched Archaeological Evaluation 2017 (Suffolk CC)* and nationally in *Standards and Guidance for Archaeological Field Evaluation (Institute for Archaeologists 1994, revised 2001 & re-issued 2014)*.

1.3 The evaluation as detailed in this document is the first phase of a programme of archaeological investigation to be secured by negative condition on planning application DC/18/03710. Where the results of the evaluation indicate the presence of heritage assets further archaeological works will be required to mitigate the impact of the development on the historic environment. The relevant SCCAS officer will identify the type and extent of works in a new brief necessary to adequately mitigate the impact of the proposed development. All further archaeological works, as recommended by SCCAS, must be undertaken in accordance with an additional WSI, submitted and approved by SCCAS and the LPA. All further archaeological investigations must be undertaken prior to commencement of development, unless specifically referenced as monitoring of groundworks in the subsequent brief and as outlined in the related WSI.

## 2. Location, Topography & Geology

2.1 Great Finborough parish is located in south central Suffolk to the south-west of Stowmarket on part of the Till plateau of central Suffolk in an area characterised by a gently rolling landscape on heavy clay soils derived from the underlying chalky till with flints. Historically the settlement pattern at Great Finborough is made up of a village strung out along a main, north-south orientated, street and a scatter of farms and cottages along roads and lanes across the parish and around various greens in a manner characteristic of the claylands of central Suffolk. The proposed development site (PDS) at land off Pear Tree Place is some 40m east of the High Road that runs through the village and is 700m south of the parish church and towards the southern parish boundary.



# John Newman Archaeological Services

---

2.2 The British Geological Survey (BGS) describes the drift deposits as being chalky till of the Lowestoft Formation with outwash sands and gravels. The PDS is at c65m OD in an area of gentle topography with a small stream, now a field boundary, indicated on modern OS maps 100m to the north which feeds into another stream c500m to the east.

## 3. Archaeological & Historical Background

3.1 Advice from SCCAS during the application stage for this development notes its proximity to areas where medieval and Post medieval finds and features have been recorded (HER FNG 032 & FNG 053). In addition prehistoric metal and flint work (HER FNG 047) has been recovered from nearby. Therefore, there is potential for the discovery of below-ground heritage assets of archaeological importance within this area, and groundworks associated with the development have the potential to damage or destroy any archaeological remains which exist.

A site evaluation by trial trenching is therefore required to:

- Identify the date, approximate form and purpose of any archaeological deposit, together with its likely extent, localised depth and quality of preservation.
- Evaluate the likely impact of past land uses, and the possible presence of masking colluvial/alluvial deposits.
- Establish the potential for the survival of environmental evidence.
- Provide sufficient information to construct an archaeological conservation strategy, dealing with preservation, the recording of archaeological deposits, working practices, timetables and orders of cost.

## 4. Aims of the Site Evaluation

4.1 As outlined in section 3 above the archaeological potential of the PDS relates to the site's location close to recorded evidence for activity of prehistoric, medieval and Post medieval date.

## 5. Methodology

5.1 The proposed development is for the construction of 7 dwellings. To inform the results of the evaluation if archaeological deposits are revealed a search will be commissioned from the County HER for the area within 500m of the PDS and the relevant invoice number will be included in the report.

5.2 The relevant Brief is likely to require up to 100m of 1.8m wide trenching across the area of the overall development. This will be undertaken using a wide toothless ditching bucket on a suitably sized machine operated by an experienced driver with a

## John Newman Archaeological Services

---

trench plan as set out below. The machine will be closely supervised by an experienced archaeologist as the overburden is removed in shallow spits to the top of any archaeological deposits that are present, where hand investigation will start, or to expose the underlying drift geology which will be further hand cleaned and examined as required. The spoil will be stored adjacent to the excavated trench with top and sub soil kept separate to allow for subsequent sequential backfilling. No trenches will be backfilled until the relevant officer at SCCAS has been consulted and should any modification to the trench layout be required due to any unforeseen circumstances, such as local services, then SCCAS will be contacted immediately. A metal detector search will be carried out by an experienced operator at all stages of the evaluation including before the trenches are opened. The up cast spoil will also be closely examined for unstratified artefacts as evidence for past activity in rural areas in particular is often as evident via artefact scatters as by undisturbed archaeological deposits.

5.3 Site records will be made under a continuous and unique numbering system of contexts under an overall HER number obtained from the Suffolk CC HER beforehand in combination with an event number. All contexts will be numbered and finds recorded by context. Conventions compatible with the county HER will be used throughout the monitoring. Site plans will be drawn at 1:20 or 1:50 as appropriate and sections at 1:10 or 1:20 (all on plastic drawing film) and related to OS map cover. Sections will be levelled to a datum OD. A photographic record in high resolution digital images will be made of the site and exposed features.

5.4 As necessary and to define archaeological deposits exposed surfaces will be trowelled clean before appropriate hand investigation and recording. Exposed archaeological features will be sampled at standard levels with care being taken to cause minimum disturbance to the site consistent with evaluation to a level adequate to properly form a subsequent mitigation strategy. Significant features such as solid or bonded structural remains, building slots or post holes (where fills are sampled) will have their integrity maintained (and during backfilling). Otherwise for discrete, contained, features, sampling will be at 50%- possibly rising to 100% if requested, and 1m wide sampling slots across linear features. If human burial evidence is revealed the SCCAS Officer will be informed and the clear presumption must be to preserve such remains in situ with minimum disturbance during this evaluation stage. If this is not possible then a Ministry of Justice licence will be obtained prior to full on site recording (total 100% sampling if a cremation deposit) and removal of the remains followed by examination by the relevant specialist and possibly scientific dating. If human remains do have to be recorded, removed from site and reported on then these works will add an additional cost to the evaluation works which may involve radiocarbon dating (in this case the likelihood of revealing human burial evidence is assessed as being low).

5.5 All finds will be collected and processed unless any variation is agreed with the relevant SCCAS Officer. Finds will be assessed by recognised period specialists and

## John Newman Archaeological Services

---

their interpretation will form an integral part of the overall report. Finds will be stored according to ICON guidelines with specialist advice/treatment sought for fragile ones. Every effort will be made to gain the deposit of the site finds to the SCCAS Store under their relevant HER code and site numbering for future reference. If this is not possible then the SCCAS Officer will be consulted over any requirements for additional recording (which may have an additional cost implication). Any discard policy will be discussed and agreed with the relevant SCCAS Officer and any finds that qualify under the Treasure Act will be reported to the local Finds Liaison Officer within 14 days.

5.6 Where appropriate palaeoenvironmental samples will be taken for processing and assessment by a specialist conversant with regional archaeological standards and research agendas. The sampling, processing and assessment will follow the guidelines as detailed in *Environmental Archaeology: A Guide to the Theory and Practice of Methods, from Sampling and Recovery to Post-excavation* (English Heritage, 2011). In accordance with standard practice bulk samples of 40 litres (or 100% of the deposit where less) will be taken from a representative cross section of archaeological deposits of all periods (respecting defined fills within features), in consultation with the relevant SCCAS Officer (and the Historic England Regional Scientific Advisor (RSA) if the deposits merit more targeted advice) including deposits that cannot be immediately dated by their artefact content, so the state of preservation and full archaeological and palaeoenvironmental potential of the deposits can be assessed and any further sampling, should further field work take place, be systematically planned and fully costed. Archaeological deposits of all types may reveal valuable data through the processing and assessment of samples with high priority features including the primary fills of pits, wells and cesspits, layers of middens, occupation surfaces and structural features as well as other discrete activity areas, contents of hearths, ovens, and other craft related or industrial structures. In addition more generalised settlement and land use features such as ditches may also yield valuable and informative data when sampling is undertaken systematically as the sum of all the assessment results can add considerably to the interpretation of a site and its landscape. Through an integrated study of all the data recovered from the evaluation the results from the assessment of the samples will be reviewed in terms of:

- What is the quality and state of preservation of charred plant remains, mineralised plant and animal related remains, small vertebrates and industrial residues such as evidence for iron working (contributing to the fullest interpretation of the evaluation results and to aid the planning of any further field work- if any RC dates are required for features containing suitable material but no easily dateable finds then this will incur an additional cost).
- What is the concentration of macro-remains (to inform sampling strategy in any further field work), in particular how might bulk sampling inform the interpretation of burial deposits.

## John Newman Archaeological Services

---

- Can any patterning or similarities/differences be ascertained between deposits from different periods represented on site, similarly can any useful comparisons be made with undated and unphased deposits (to aid interpretation of the evaluation results and help in the study of undated deposits which may otherwise be overlooked and which may via sampling yield material for RC dating)
- Do waterlogged deposits exist on site, if so is there potential for palaeoenvironmental data from preserved insects or pollen and do such deposits contain organic material suitable for RC dating from samples taken as advised by the relevant soil specialist (who would also coordinate the assessment for pollen and insect remains), the RSA will also be consulted in such cases in conjunction with the relevant SCCAS Officer. Incremental column samples will be taken should waterlogged deposits be revealed in close consultation with the evaluation soils specialist with 10-20 litre sample sizes which will be sub-sampled for preserved pollen, insects, diatoms, preserved parasite eggs etc. If waterlogged wood is encountered it will ideal to leave in situ, if it has to be lifted it will be packed while wet in black polythene and stored at 5C until it can be transferred to a specialist for species identification, assessment and potential for RC dating is undertaken (should RC dating be required in the evaluation on such deposits this will incur an additional cost and will take time to obtain, examination of the topographic location of the site indicates that the presence of waterlogged deposits is unlikely unless deep deposits are revealed).
- Deep blanket type deposits resulting from both natural and human derived actions and events can yield valuable land use and palaeoenvironmental information. In particular such deposits can form at the base of a slope, if located in the evaluation the relevant SCCAS Officer and RSA will be consulted over monolith sampling and assessment by the relevant evaluation specialist (the composition of such deposits may give information on past land use in the area through a study of the soil matrix notwithstanding additional data if it is waterlogged)

5.7 An archive of all records and finds will be prepared consistent with the principles of *MoRPHE* (and the guidelines in the Archaeological Archives Forum: a guide to best practice 2007). This archive will be deposited with the Suffolk CC HER within 3 months of working finishing on site under the relevant HER number and following the guidelines outlined in '*Archaeological Archives in Suffolk- Guidelines for preparation and deposition*' (SCCAS Conservation Team 2017). As necessary the site digital archive will deposited with the Archaeology Data Service (ADS) within the agreed allowance for the evaluation and reporting works.

5.8 The evaluation report will be consistent with the principles of *MoRPHE* and this report will summarise the methodology employed and relate the archaeological

## John Newman Archaeological Services

---

record directly to the aims of this WSI and section 4 above in particular. The report will give an objective account of the deposits and stratigraphy recorded and finds recovered with an inventory of the latter. The report will include an assessment of palaeoenvironmental remains recovered from palaeosols and cut features in relation to both dated and undated features and in terms of patterning across the site.

5.9 Any interpretation of the evaluation will be clearly separated from the objective account of the evaluation and its results and the results will be discussed with the relevant SCCAS Officer at an early stage in the reporting process following reporting on the day of the immediately apparent conclusions. The report will give a clear statement regarding the results of the site evaluation in relation to both the more detailed aims in section 4 above and their significance in the context of local HER records and of the Regional Research Framework (EAA Occ. Papers 3, 8 & 24, 1997, 2000 & 2011). There will be no further work on site until the evaluation results have been assessed and the SCCAS Officer has considered whether further archaeological works are required if this application receives consent. The report may give an opinion regarding the necessity for further evaluation work as appropriate. A draft copy of the report will be presented to SCCAS following completion of the site works. Once accepted a bound hard copy will be provided for the County HER with a digital version on disc. As required the site evaluation will be registered on the OASIS online archaeological record followed by submission of the final draft in .pdf format. An HER summary sheet will be completed and a summary prepared of any positive results for inclusion in the annual PSIAH round-up.

### 6. Risk Assessment

6.1 Protective clothing will be worn on site (hard hat, high visibility vest/coat, steel-toe cap boots, and ear muffs if required). A safe working method will be agreed with the machine operator for excavation of the trenches and examination of the up cast spoil while at the same time allowing efficient use of plant. Suitable clothing will be available to mitigate against extremes of weather.

6.2 Vehicles will be safely parked away from work areas and lines of access.

6.3 Prior to evaluation work starting on site the client will be consulted with regard to any potential contamination at the site. No overhead services impinge on the trench locations. Gloves and hand wash/wipes be available and any information on possible ground contamination revealed during the evaluation will be passed to finds and environmental specialists.

6.4 A fully charged mobile phone will be carried and a first aid kit will be taken to site.

6.5 It is unlikely that any trench plus excavated feature depth will go below c1/1.3m from the present ground level. If any excavations need to go deeper measures such as stepping in the sides will be employed.

## John Newman Archaeological Services

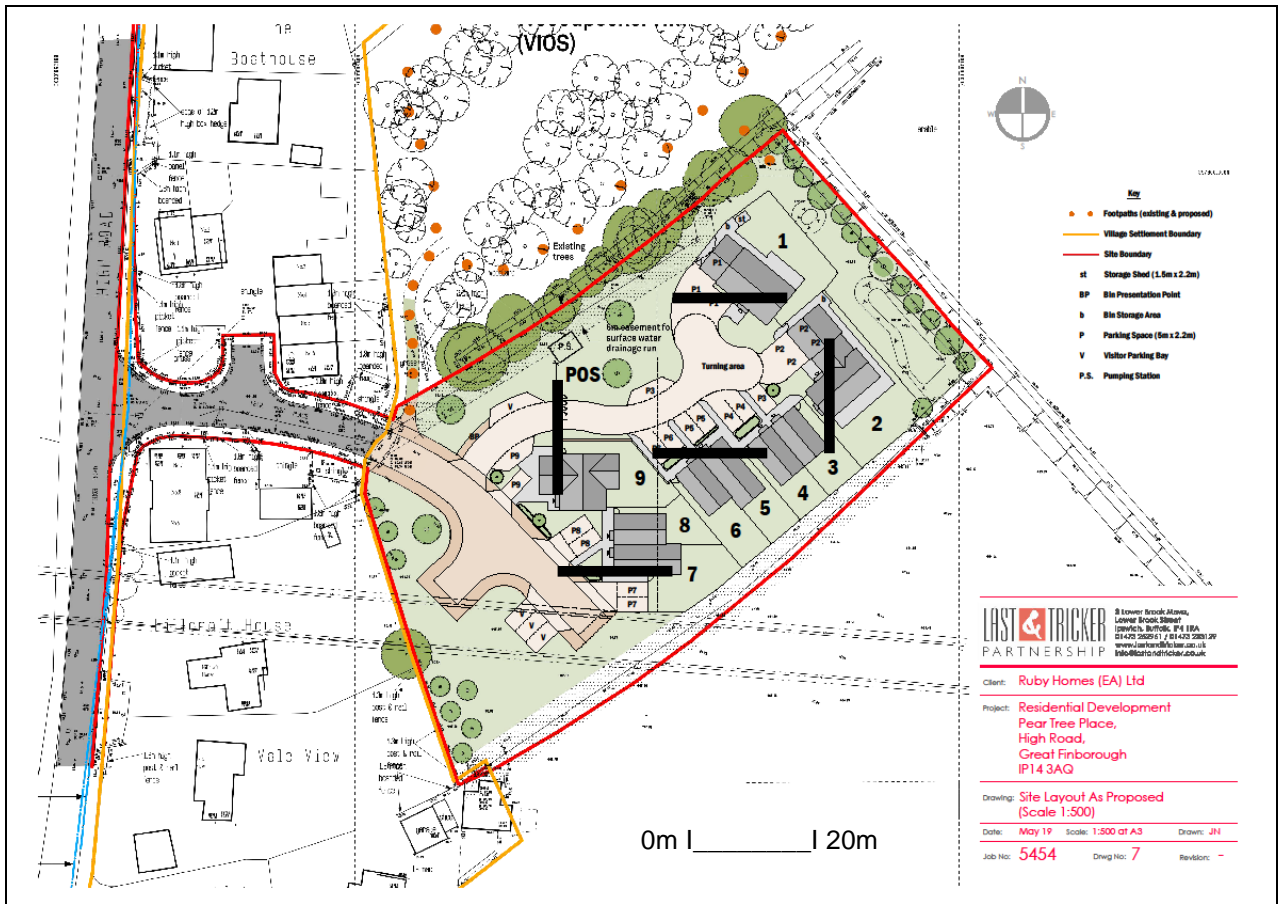
---

6.6 JNAS holds full insurance cover for archaeological site works from the specialist provider Towergate Risk Solutions covering Public & Products Liability, details can be supplied on request.

### 7. Specialists

Conservation:	Conservation Services
Faunal remains:	J Curl (Sylvanus Archaeology)
Human remains:	S Anderson (Freelance)
Metal detecting:	J Armes (experienced freelance)
Palaeoenvironmental samples:	V Fryer (Freelance)
Soils specialist	R Macphail (UCL)
Pre-historic flint:	S Bates (Freelance)
Pre-historic pottery:	S Percival (Freelance)
Post Roman ceramics & CBM:	S Anderson (Freelance)
Roman period small finds:	N Crummy (Freelance)
Roman period ceramics:	Colchester Archaeological Trust
Medieval coins:	M Allen (Fitzwilliam Museum)
Post Roman small finds:	JNAS

# John Newman Archaeological Services



Proposed location of trial trenches (5 x 20m)

# OASIS ID: johnnewm1-367583

## Project details

Project name	Land off Pear Tree Place, Great Finborough, Suffolk- Archaeological Evaluation Report
Short description of the project	Great Finborough, land off Pear Tree Place (FNG 063, TM 0136 5726) evaluation trenching for a residential development on the south-eastern side of the historic village core did not reveal any features or any finds of pre-modern date.
Project dates	Start: 18-09-2019 End: 18-09-2019
Previous/future work	No / No
Any associated project reference codes	FNG 063 - Related HER No.
Any associated project reference codes	DC/18/03710 - Planning Application No.
Type of project	Field evaluation
Site status	None
Current Land use	Cultivated Land 3 - Operations to a depth more than 0.25m
Monument type	NONE None
Significant Finds	NONE None
Methods & techniques	""Sample Trenches""
Development type	Rural residential
Prompt	Planning condition
Position in the planning process	After full determination (eg. As a condition)
Project location	
Country	England
Site location	SUFFOLK MID SUFFOLK GREAT FINBOROUGH LAND OFF PEAR TREE PLACE
Postcode	IP14 3AQ
Study area	3500 Square metres
Site coordinates	TM 0136 5726 52.176293270497 0.945309308635 52 10 34 N 000 56 43 E Point
Height OD / Depth	Min: 15m Max: 16m
Project creators	
Name of	John Newman Archaeological Services



Organisation	
Project brief originator	Local Authority Archaeologist and/or Planning Authority/advisory body
Project design originator	John Newman
Project director/manager	John Newman
Project supervisor	John Newman
Type of sponsor/funding body	Developer
Project archives	
Physical Archive Exists?	No
Digital Archive recipient	Suffolk CC Archaeological Service
Digital Contents	"none"
Digital Media available	"Images raster / digital photography", "Text"
Paper Archive recipient	Suffolk CC Archaeological Service
Paper Contents	"none"
Paper Media available	"Report"
Project bibliography	
1	
Publication type	Grey literature (unpublished document/manuscript)
Title	Land Off Pear Tree Place, Great Finborough, Suffolk- Archaeological Evaluation Report
Author(s)/Editor(s)	Newman, J
Date	2019
Issuer or publisher	John Newman Archaeological Services
Place of issue or publication	Henley, Suffolk
Description	Loose bound client report and pdf
Entered by	John Newman (johnnewman2@btinternet.com)
Entered on	3 October 2019