



Rebecca Shaw Archaeological Services

**Scottish Power Energy Networks, Dunscore
Dumfriesshire, Dumfries & Galloway:
Archaeological Monitoring Works**



**Data Structure Report
by Rebecca Shaw
4th February 2019**

9 Earl Place
Ranfurly
Bridge of Weir
PA11 3HA

Tel: 01505 612762
Mob: 077861 35432
Email: rebeccashaw@archaeologist.com
Website: www.rebeccashawarchaeologicalservices.co.uk

Contents

1 Introduction	2
2 Background	2
3 Project Works	2
4 Findings	2
5 Discussion	3
References	8
Appendix 1 - Record Summaries	9
Appendix 2 - Discovery & Excavation in Scotland	9
Contact Details	11

Figures

Fig. 1	Location map	3
Fig. 2	Proposed location of pits	4
Fig. 3	Location of pits	4
Figs. 4a-b	Pit 1	5
Figs. 4c-d	Pit 2	5
Fig. 5a	Pit 2 showing ground water level	6
Fig. 5b	Lower Ingleston Motte and Bailey	6
Fig. 6a	Lower Ingleston Motte and Bailey	7
Fig. 6b	1 st Edition Ordnance Survey Map (1863-64) (1:2500)	7

Acknowledgements

I would like to thank Keltbray Ltd for all their assistance on site and thanks also to Andy Nicholson for pre-site discussions.

1 Introduction

This Data Structure Report presents the findings of a programme of archaeological monitoring works that were undertaken in respect of proposed works around Dunscore in Dumfriesshire (Figure 1). The proposed works comprise refurbishment of the overhead electrical utility line circuit.

As a section of the refurbishment works were to be undertaken within the protected area around the remains of Lower Ingleston Motte and Bailey (HER: MDG4399; NX 80267 90047) (Figures 5b; 6a & front cover), Dumfries & Galloway Council Archaeology Service requested that a watching brief be undertaken during the works within the proximity of the Motte and Bailey (Figure 2). The archaeological monitoring works were required to ensure appropriate archaeological recording of any remains uncovered as well as recovering any finds.

The archaeological works comprised: the monitoring of the excavation of two machine excavated pits for the insertion of two new electricity poles (Figure 3).

Rebecca Shaw Archaeological Services was appointed to act with regard to the archaeological issue by Connicks on behalf of their client Scottish Power Energy Networks (SPEN).

2 Background

Lower Inglestone Motte and Bailey is known locally as Bow Butts is thought to date to the 12th century. The motte is 31ft in diameter on the summit surrounded by a ditch 25ft has been erected at the WSW end of a natural hillock. The bailey has been formed by levelling the summit, and steeply scarping the sides of the hillock towards the ENE where a second ditch has been dug. A bank-lined roadway leads from the bailey shown down to a squarish platform at the foot of the slope to the S.A piece of glazed medieval pottery was found in 1967 in a molehill on the bailey; this and other pottery from the site, are in Dumfries Museum (NX78NE 8).

3 Project Works

The archaeological monitoring works within the proximity of Lower Ingleston Motte & Bailey were undertaken on the 14th January 2019. The works were undertaken as per discussions with Dumfries & Galloway Council Archaeology Service.

All works complied with the Chartered Institute For Archaeology's Standards and Policy Statements and Code of Conduct, and Historic Environment Scotland Policy Statements.

4 Findings:

A total of two pits were excavated (Figure 3) and their specific details are noted below:

Pit (1)

Pit 1 measured 1.8m by 0.60m and was excavated to a depth of 1.8m (Figures 4a-b). The fill comprised a mid to light brown slightly gritty silt with occasional small stones [103] which measured 300mm in depth (there were frequent roots at 300mm approx). Below [103] was a mid brown silt containing frequent rocks [104] - this deposit became more gravelly as the ground reduced.

Pit (2)

Pit 2 measured 2m by 0.70m and was excavated to a depth of 1.6m (surrounding ground kept falling in) (Figures 4c-d & 5a). The fill comprised a mid brown slightly gritty silt with frequent small stones & roots [101] (approx depth 700mm). Below [101] was a grey (gritty) sandy clay with frequent stones & rocks [102] - a plastic drainage pipe was located at 1m and the pit flooded from 1.1m approx.

5 Discussion

The excavation of pit 1 revealed a clean silty topsoil above a fairly stony subsoil (Figures 4a-b) and pit 2 comprised mainly disturbed ground, both from the insertion of the previous electricity pole as well as a plastic drainage pipe (Figures 4c-d & 5a).

Although there was potential to uncover archaeological features or finds relating to the occupation of Lower Ingleston Motte & Bailey, no remains were uncovered during the excavation works.

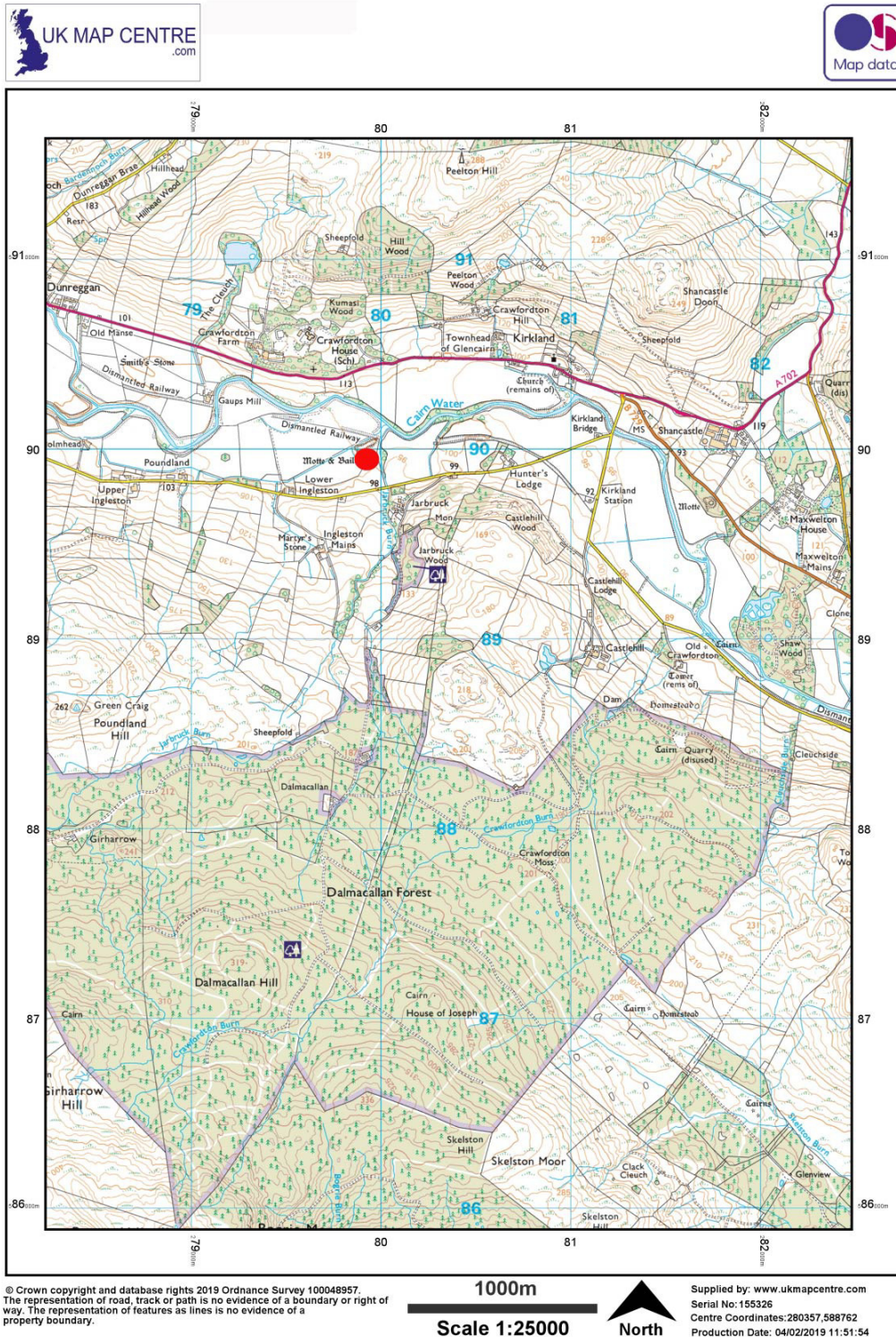


Figure 1 – location map

Data Structure Report - Dunscore (SPEN) Dumfriesshire

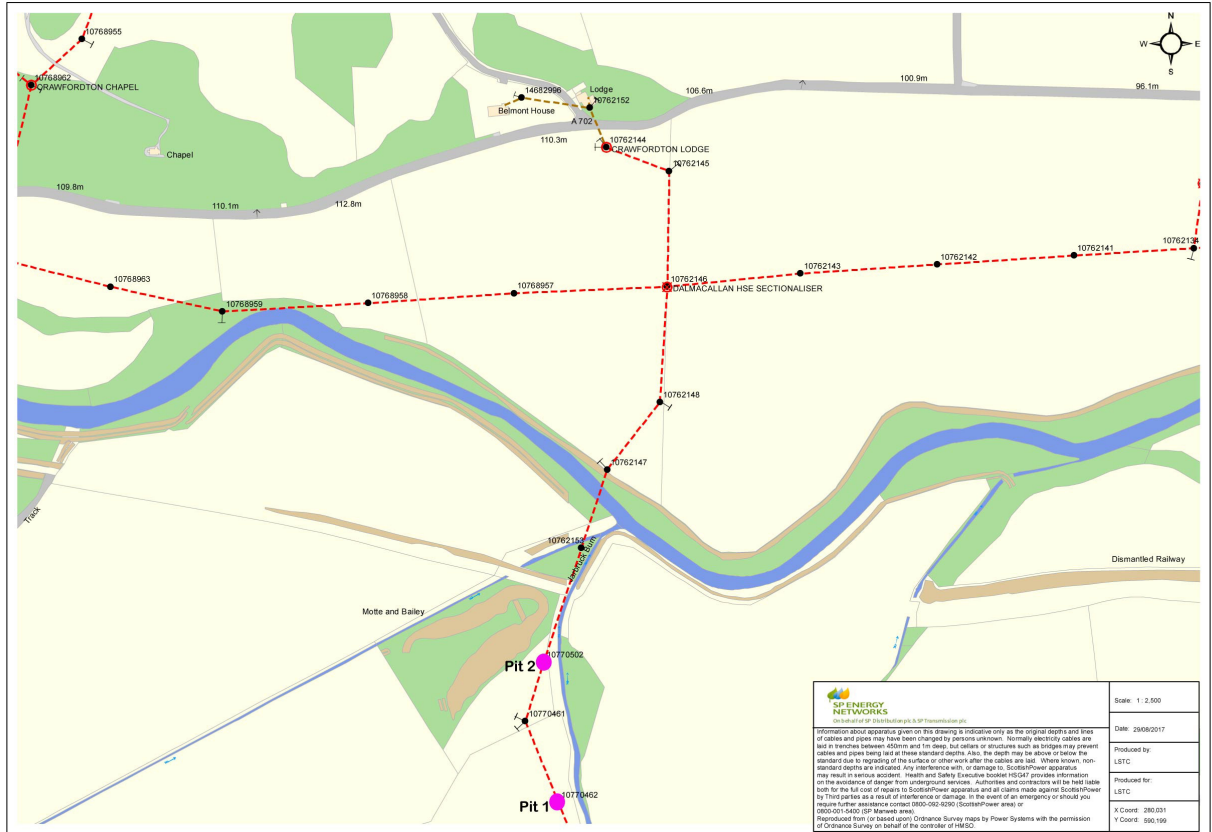


Figure 2 – location of proposed pits (kindly provided by Connicks)

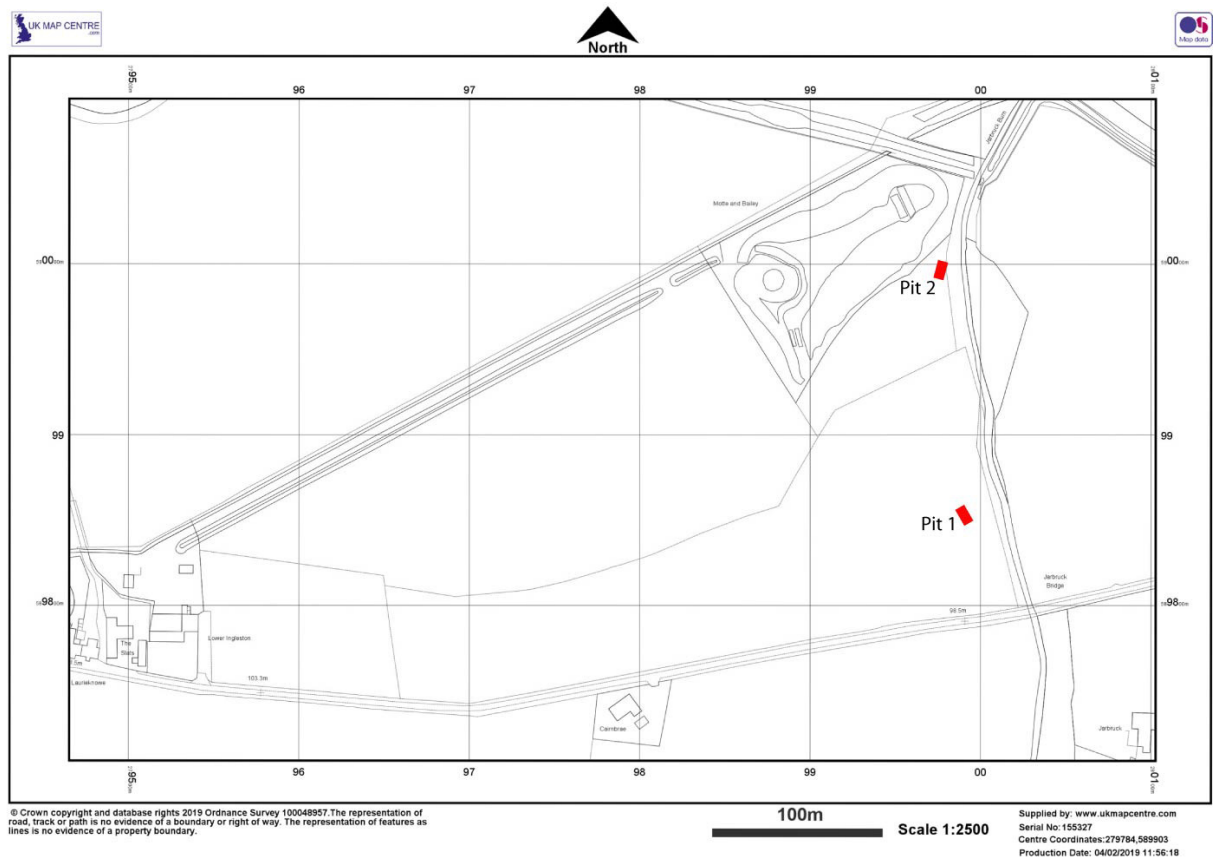


Figure 3 - location of excavated pits



Figure 4a - Pit (1) pre-ex (from SE)



Figure 4b - Pit (1) post-ex (from SE)



Figure 4c - Pit (2) pre-ex (from SW)



Figure 4d - Pit (2) post-ex (from SW)



Figure 5a – Pit (2) showing groundwater level (from SW)



Figure 5b – Lower Ingleston Motte and Bailey



Figure 6a - Lowe Ingelston Motte and Bailey

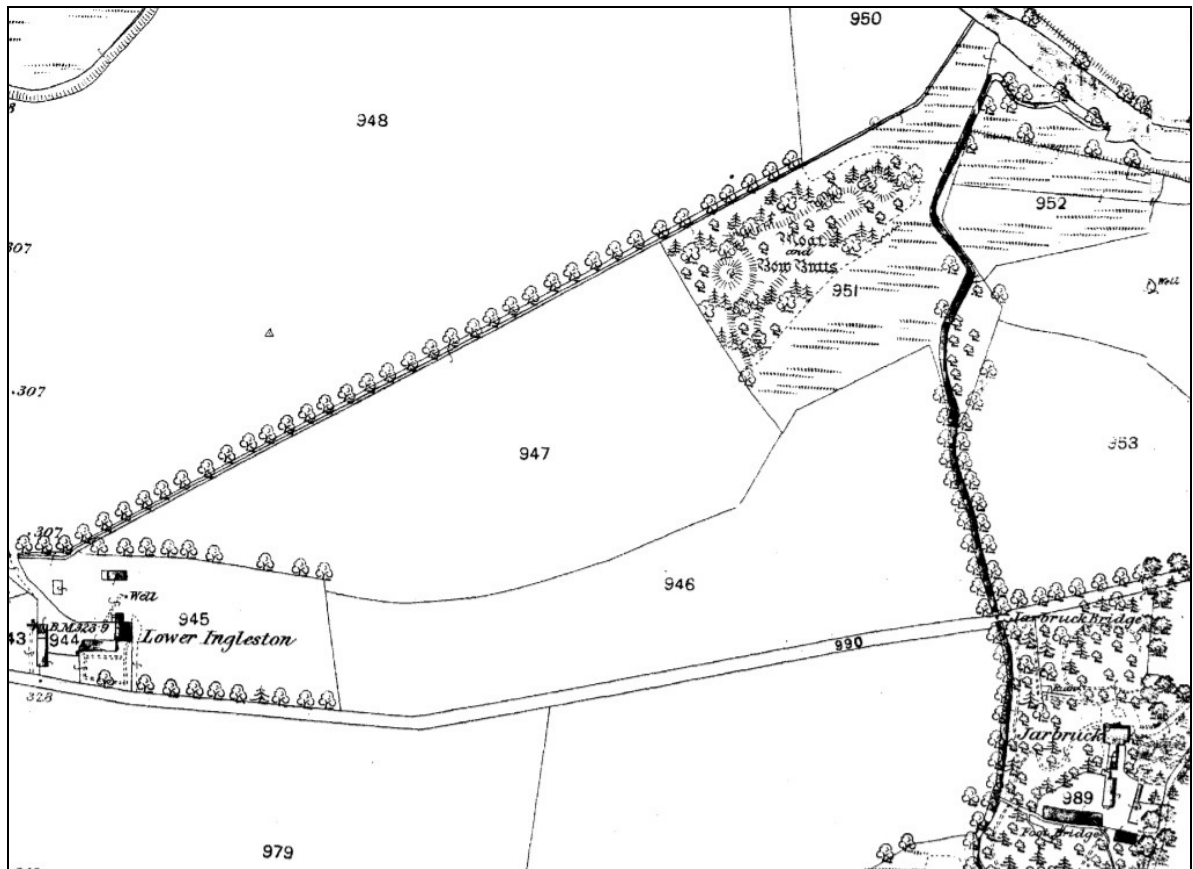


Figure 6b – 1st Edition Ordnance Survey Map (1856-7) 1:2500 © Crown Copyright and Landmark Information Group – not to be reproduced without permission – 105925100

References

<i>Documentary</i> SOEn	2010	Scottish Planning Policy (SPP). <i>Archaeology</i> , Scottish Office Environmental Department.
SOEn	2011	<i>PAN 2/2011</i> , Planning & Archaeology Scottish Office Environmental Department.
HES	2016	Historic Environment Scotland Policy Statement June 2016
<i>Cartographic</i> Ordnance Survey	1856-7	1 st Edition OS Map, Dumfriesshire (1:2500)

Appendix 1: Record Summaries

Context Summaries

No.	Interpretation	Description
101	Backfill	Infill from excavation for previous pit - mid brown slightly gritty silt containing frequent small stones & roots (700mm in depth).
102	Subsoil	Grey (gritty) sandy clay with frequent stones.
103	Topsoil	Mid to light brown slightly gritty silt with occasional stones & frequent roots (300mm in depth).
104	Subsoil	Mid brown silt with frequent rocks - becomes more gravelly as ground deepened.

Photographic Record

No	B&W Digital No.	Colour Digital No.	Description	From	Date
			Description	From	Date
1	1	1	Pit 1 pre-ex	SE	14/01/2019
2	2	2	Pit 2 pre-ex	SW	14/01/2019
3	3	3	Pit 2 post-ex	SW	14/01/2019
4	4	4	Pit 1 post-ex	SE	14/01/2019
5	5	5	Pit 1 post-ex	SE	14/01/2019
6	6	6	Lower Ingleston Motte & Bailey	-	14/01/2019
7	7	7	Lower Ingleston Motte & Bailey	-	14/01/2019

Appendix 2: Discovery & Excavation in Scotland

LOCAL AUTHORITY:	Dumfries & Galloway Council
PROJECT TITLE/SITE NAME:	Scottish Power Energy Networks, Dunscore
PARISH:	Glencairn
NAME OF CONTRIBUTOR:	Rebecca Shaw
NAME OF ORGANISATION:	Rebecca Shaw Archaeological Services
TYPE(S) OF PROJECT:	Archaeological monitoring works
NMRS NO(S):	None
SITE/MONUMENT TYPE(S):	None
SIGNIFICANT FINDS:	None
NGR (2 letters, 10 figures)	NX 79996 89856 & NX 79982 90011
START DATE (this season)	14th January 2019
END DATE (this season)	14th January 2019
PREVIOUS WORK (incl.	None

Data Structure Report - Dunscore (SPEN) Dumfriesshire

<i>DES ref.)</i>	
PROPOSED FUTURE WORK:	None
DESCRIPTION:	<p>The excavation of pit 1 revealed a a clean silty topsoil above a fairly stony subsoil and pit 2 comprised mainly disturbed ground, both from the insertion of the previous electricity pole and a plastic drainage pipe.</p> <p>Although there was potential to uncover archaeological features or finds relating to the occupation of Lower Ingleston Motte & Bailey, no remains were uncovered during the excavation works.</p>
PROJECT CODE:	018043
SPONSOR OR FUNDING BODY:	Connicks
ADDRESS OF MAIN CONTRIBUTOR:	9 Earl Place, Ranfurly, Bridge of Weir, PA11 3HA
E MAIL:	rebeccashaw@archaeologist.com
ARCHIVE LOCATION (intended)	Report to Dumfries & Galloway Council Sites and Monuments Record and archive to Historic Environment Scotland Archives.

Contact Details

Rebecca Shaw Archaeological Services

9 Earl Place
Ranfurly
Bridge of Weir
PA11 3HA

tel: 01505 612762
mob: 07786 135432
email: rebeccashaw@archaeologist.com
website: www.rebeccashawarchaeologicalservices.co.uk
facebook: Rebecca Shaw Archaeological Services

Rebecca Shaw Archaeological Services (sub office)

Kirriereoch
Bargrennan
Newton Stewart
Wigtownshire
DG8 6TB

Connicks

Millgrane
Kirkcowan
Newton Stewart
Wigtownshire
DG8 0EF

Dumfries & Galloway Council Archaeology Service

Andrew Nicholson
Strategic Planning
Kirkbank House
English Street
Dumfries
DG1 2HS

tel: 01387 260154