

INDEX DATA	RPS INFORMATION
Scheme Title <i>A1 Dishforth to North of Leeming Improvements</i>	Details <i>Arch Fieldwalking Area A</i>
Road Number <i>A1</i>	Date <i>?</i>
Contractor <i>MAL</i>	
County <i>North Yorkshire</i>	
OS Reference <i>SE37</i>	
Single sided <input checked="" type="checkbox"/>	
Double sided	
A3 <i>12</i>	
Colour <i>0</i>	

INTERIM REPORT

**A1 DISHFORTH TO NORTH OF LEEMING
IMPROVEMENTS**

ARCHAEOLOGICAL FIELDWALKING

AREA A

MAP

Archaeological Consultancy Limited

39, Greengate, Malton,
North Yorkshire, YO17 0EL.
Telephone (0653) 697752
Fax (0653) 694747

A1 DISHFORTH TO NORTH OF LEEMING IMPROVEMENTS

Archaeological Fieldwalking

Interim Report

Contents	Page
Figure list	2
1. Area A	
Introduction	3
2. Area A1	4
Introduction	
Results	
Conclusions	
Recommendations	
3. Area A2	5
Introduction	
Results	
Conclusions	
Recommendations	
4. Area A3	6
Introduction	
Results	
Conclusions	
Recommendations	
5. Area A4	8
Introduction	
Results	
Conclusions	
Recommendations	
6. Area A5	10
Introduction	
Results	
Conclusions	
Recommendations	
7. Bibliography	11
8. Finds Catalogue	12
Figures	
9. Tables	

Figure List

1. Area A: Site location. Scale 1:50000
2. Area A1: Location of site grid. Scale 1:2500
3. Area A1: Artefact distribution. Scale 1:2500
4. Areas A2 & A3: Location of site grids. Scale 1:2500
5. Area A2 & A3: Artefact distribution. Scale 1:2500
6. Area A2 & A3: Pottery distribution. Scale 1:2500
7. Area A4: Location of site grids. Scale 1:2500
8. Area A4: Artefact distribution. Scale 1:2500
9. Area A4: Pottery distribution. Scale 1:2500
10. Area A5: Location of site grid. Scale 1:2500
11. Area A5: Artefact distribution. Scale 1:2500

A1 DISHFORTH TO NORTH OF LEEMING IMPROVEMENTS

Archaeological Fieldwalking

Interim Report

1. Area A

Introduction

The section of the improvement scheme referred to as Area A, is in fact composed of five separate areas: Area A1, A2, A3, A4, and A5 (Fig. 1). Each individual area was fieldwalked using the 10m interval line method, the results of which are displayed and discussed within this report.

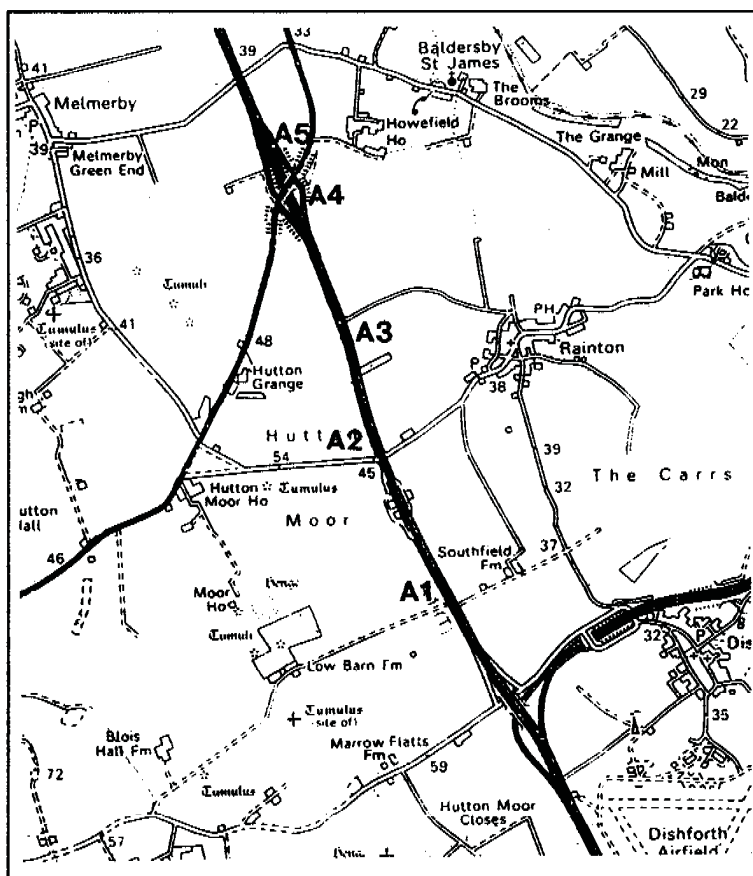


Figure 1. Site Locations. Scale 1:50000

All maps within this report have been produced from Ordnance Survey with the permission of the Controller of Her Majesty's Stationary Office, Crown Copyright. License No. AL 50453A.

2. Area A1

Area A1 is situated west of the A1 road (Fig. 1), NGR SE 364 736 (centre). The field had been freshly drilled, which provided an even, level surface. No traces of subsoil were recorded.

The area measured 340m N-S x 100m E-W, giving an area of 3.4ha to be initially fieldwalked.

The area was line walked at 10m intervals between the walkers. The longest axis was in a N-S direction and parallel to the A1 road. The origin of the grid was formed by the 100m long southern edge, and line segments were numbered from 1-34 from S-N. Lines A and B, E and F, and I and J were walked from south to north; the remainder of the lines were walked north to south (Fig. 2).

Area A1 was walked over two days with extremes of weather conditions. Initially the ground conditions were dry with even light, without shadow; the subsequent evaluation was undertaken on a dull very overcast day with sporadic showers of heavy rain.

Results

A total of 14 artefacts were observed from the initial fieldwalking of Area A1 (Fig. 3: Table 1):

Struck flint flakes: a total of 5 struck flint flakes were noted, occurring in line segments A4, A15, C4, F9 and H13. These flakes were patinated from grey to dark grey. None showed signs of secondary working.

Pottery: a total of 4 sherds were observed, comprising a single post-medieval sherd from line segment G29, and single modern white-glazed earthenware sherds from line segments E27, I8 and I19.

Brick and tile: a total of 4 modern brick/tile fragments were noted, as single fragments occurring in line segments E20, E27, J3 and J17.

Glass: a single piece of glass was observed, in line segment E31. This glass fragment was part of a modern moulded bottle with embossed lettering.

Conclusions

The only finds suggestive of ancient activity in the area were the 5 struck flint flakes. It may be significant that the flint flakes were located in the southern and western parts of the area, for this is the sector closest to the suspected prehistoric site south-west of Great Raygill Dike, c.100m south-west of Area A1. However, it should be said that 5 flakes represent only a thin scatter.

The modern pottery, glass and brick/tile presumably represent artefacts deposited during recent manuring associated with the modern arable cultivation of the area.

Recommendations

In view of the occurrence of flint flakes in that part of Area A1 nearest to the suspected prehistoric activity south west of Great Raygill Dike, it is suggested that intensive fieldwalking of the southern 2 hectares of Area A1 would either demonstrate or discount prehistoric activity overlapping into this area.

3. Area A2

Area A2 is situated west of the A1, and to the north of Shambles Lane (Fig. 1), NGR SE 359 746 (centre). The field had been harrowed, which provided a relatively level surface. Traces of subsoil were noted on lines K4, 5, and 8.

The area was an irregular rectangle measuring 70m N-S at its widest point x 290m E-W, giving an area of 2.03ha to be initially fieldwalked.

The area was line walked at 10m intervals between the walkers. The longest axis was in a N-S direction and parallel to the A1 road. The origin of the grid was formed by a 240m long section located to the west of the north-south hedge boundary (Fig. 4). Line segments were numbered from -7 to 0 and 1 to 12 from S-N. Lines A, B, E, F, I, J, K, L, O, P, S and T were walked from south to north; the remainder of the lines were walked north to south (Fig. 4).

Ground conditions were dry. The light conditions varied from even light, without shadow to heavily shadowed through sporadic cloud cover.

Results

A total of 56 artefacts were observed from the initial fieldwalking of Area A2 (Figs. 5 & 6: Table 2):

Flint: a total of 6 pieces of flint were observed; 4 of which represented single flakes, blue-grey in colour and with no secondary working (lines E5, M3, O-3, W-4). In the south of the site (lines S-5 and P-4) two flint artefacts were observed, both were scrapers, an end and a side form and both were struck from blue-grey flint (catalogue 2; for descriptions).

Pottery: a total of 32 pottery sherds were observed, comprising of 3 Roman sherds (line segments B10, C8 and U-2); 4 medieval sherds were located on line segments B5, J5, P-3 and P-4. Post medieval wares totalled 8 sherds and occurred on line segments B8, D8, F7, F8, N1, O-2, P1 and P-5. Modern pottery comprised of 16 sherds from line segments A6, D4, 5, 8, and 9; E3, 4, and 9; H1, 3, and 8; N-2, O-2, U-2 and U-6 and W-4. In addition a single unidentifiable pottery sherd was located in line segment B10.

Brick and tile: a total of 9 fragments of brick and tile were located in line segments A10, C6 and 8, I1, 4, and 6, S-1, and S-6, and T-4. All the material appeared to be of a modern date.

Glass: a total of 8 glass sherds were observed in line segments A7, B5, 7, and 8, F4 and 6, H4, and N5. All of a modern date.

Clay pipe: a single clay pipe stem fragment was located in line segment D9.

Conclusions

Apart from the occurrence of two flint tools in the west of the site and the apparently randomly spaced flint flakes prehistoric activity on this site appears to be minimal. The majority of the finds pertain to the post medieval and modern period.

Recommendations

Due to the negative nature of the results of the initial fieldwalking of this area, no further work is required.

4. Area A3

Area A3 is situated east of the A1 (Fig. 1), NGR SE 361 750 (centre). The field had been freshly harrowed with the occasional remnants of the previous root crop, which provided a relatively even surface, except for a strip of approximately 10m around the west and north portions of the area which were rough ploughed. Traces of subsoil were recorded in Lines A3, 4, & 11, B4 & 5, and C6 & 7.

The area measured 110m N-S x 80m E-W, giving an area of 0.88ha to be initially fieldwalked.

The longest axis was in a N-S direction and parallel to the A1 road. The origin of the grid was formed by a 110m long length of the hedge boundary to the east of the A1. Line segments were numbered from 1 to 13 from S-N. Lines A, B, E, F, I and J were walked from north to south; the remainder of the lines were walked south to north (Fig. 4).

Ground conditions in A3 were fairly dry. Light conditions were predominantly of even light, although periodic shadow was experienced.

Results

A total of 27 artefacts, 2 fragments of animal bone, 2 pieces of coal and a single lump of lime mortar were observed from the initial fieldwalking of Area A3 (Fig. 5 & 6: Table 3):

Struck flint flakes: only one flake was recorded in Line F2, the flake blue/grey in colour showed no signs of secondary working.

Pottery: a total of 15 sherds were observed, comprising of 9 Roman sherds of predominantly black burnished ware with a small percentage of Grey ware (Lines B6, 7, 8 & 10; D5; F1, and H5); 1 medieval sherd badly abraded (Line C2); 2 post medieval sherds (Lines C8 & E5) and 3 modern sherds (Lines B1, & 3; F11). On Line B8 3 sherds of black burnished ware were found in close proximity; it seems likely that these 3 sherds once represented a single sherd now damaged by ploughing

Brick and tile: a total of 9 modern brick/tile fragments were noted, as single fragments occurring in each line segment A6 & 8, C2, E3, G 1 & 3, and I2.

Glass: a total of 2 sherds of glass was observed, in line segments C3 and D2. Both were modern in date.

Coal: a total of 2 pieces of coal were observed - line segments C2 and E8.

Clay pipe: only 2 fragments were observed, both representing broken stems from line segments F1 and G4.

Animal bone: 2 fragments were observed, a long bone fragment and a toe bone - line segments A10 and I2 respectively.

Conclusions

Prehistoric activity in this area appears to be minimal, only 1 flake was observed, even scatters of natural flint are absent which occur fairly regularly on other parts of the A area. Roman presence is attested by 9 sherds, 50% of which are located in the western portion of the site, but their small number suggests only a background scatter, which is not surprising when one considers the close proximity of this area to Dere Street. Medieval presence is limited to a single sherd and post medieval wares were only represented by 2 sherds.

The modern pottery, glass and brick/tile presumably represent artefacts deposited during recent manuring associated with the modern arable cultivation of the area.

Recommendations

Area A3 produced a poor artefactual assemblage and considering the absence of crop mark features in this area and the fact that the Roman material found can be explained by the association of Dere Street to the site no further fieldwalking of the site is recommended.

5. Area A4

Area A4 is situated east of the A1 and to the south of the A61 (Fig. 1), NGR SE 357 761 (centre). Area 4 comprised of two fields. The most southerly of the two had been drilled (A4i), which provided an even, level surface; whereas the northern portion was sub-divided into a rough ploughed area and a drilled area (A4ii). The drilled portions provided good even surfaces for walking but the ploughed section was most uneven.

Area 4 in total was a irregular rectangle measuring approximately 590m N-S at its longest point x 120m E-W, giving an area of 7.08ha to be initially fieldwalked.

The longest axis in A4(i) was parallel to the A1. The origin of the grid was formed by a 200m length of hedge boundary along the western limit of the area. southern edge. Line segments were numbered from 1-41 from S-N. Lines A, B, E, F, I, J, K, L, M, N, and O were walked from south to north; the remainder of the lines were walked north to south (Fig. 7).

Ground conditions reflected the agricultural methods employed, the drilled portion of the area in the south (Area A4i) was relatively dry. Light conditions for walking this section were generally poor due to the outbreaks of heavy rain showers. The ploughed portion of Area A4ii was damp but light conditions improved providing weak sunshine with uneven shadow; the drilled section of A4ii was in places quite wet and slippery, light conditions were of weak sunshine with uneven shadow.

Results - Area A4(i)

A total of 53 artefacts were observed during the initial fieldwalking of Area A4 (i) (Figs. 8 & 9), which are as follows;

Struck flint flakes: a total of 22 struck flint were noted, occurring in line segments B28; C6, 20, 21, 23; E11, 12, 25, 26; F 34; G11, 26; I7, 8, 13, 15; and K23, 24, 30. The flakes were predominantly of blue/grey patination only 1 flake showed evidence of retouch (line segment F34), and a single scraper was located in line segment C23. Just to the east of this artefact a single light grey bladelet was also observed but was off line and so it is not recorded in the catalogue.

Pottery: a total of 15 sherds were observed, comprising of 3 Roman sherds widely dispersed over the site (line segments B12, D25 and L31), a single sherd of medieval ware was located in A18. The majority of the pottery comes from the post medieval and modern periods (line segments C17, E25, F32, H25, I10, K30 and E23, F7, G38, J29 respectively).

Brick and tile: a total of 12 fragments of brick and tile were observed in line segments C25, D25, E5, F20, F36, H23, H36, I10, J25, K27, and K28. All the material dates to the modern period.

Glass: only 4 sherds of glass were observed in line segments B16, E24, F17, and F35.

In addition to the above a single piece of coal was observed in line segment C6 (Fig. 8: Table 4):

Conclusions

Artefact distribution in Area A4(i) is relatively widely spaced suggesting a background scatter for the pottery, glass and brick/tile. The occurrence of struck flint flakes and examples which show more specialised use i.e. the scraper and bladelet combined with the high percentage of flint on the site in comparison to other portions of Area A and also C3 (Stephens pers comm.) suggest that a degree of as yet undetermined pre-historic activity occurred in the vicinity of Area A4 (i).

The modern pottery, glass and brick/tile presumably represent artefacts deposited during recent manuring associated with the modern arable cultivation of the area.

Recommendations

Due to the relatively high percentage of struck flint located in Area A4(i) it is suggested that c. 2ha of the site is intensively fieldwalked between 60m and 260m.

Results – Area A4(ii)

A total of 30 artefacts were observed during the initial fieldwalking of Area A4 (ii) (Figs. 8 & 9), which are as follows;

Struck flint flakes: a total of 7 struck flint were noted, occurring in line segments H-2, H8, J16, L12, L18, M10. The flints were predominantly of blue/grey patination and none showed evidence of secondary retouch.

Pottery: a total of 5 sherds were observed, comprising of a single Roman sherds from line segment K-3; a single sherd of post medieval ware in M15; a 3 sherds of modern wares from line segments D-1, J19 and L19..

Brick and tile: a total of 12 fragments of brick and tile were observed in line segments B4, C1, C3, D7, E10, H-4, H4, I6, L2, M7, and M17. All the material dates to the modern period.

Glass: a total of 5 sherds of glass were observed in line segments E10, H14, I17, J18, .

In addition to the above a single piece of animal bone was observed in line segments H10 and J-1. (Fig. 8: Table 4):

Conclusions

Artefact distribution in Area A4(ii) is relatively widely spaced suggesting a background scatter of no particular archaeological significance for the pottery, glass, flint and brick/tile.

Recommendations

Based on the poor results of the initial fieldwalking of this area, it is felt that no further fieldwalking is required.

6. Area A5

Area A5 is situated immediately north-east of the A1/A61 intersection (Fig. 1) at NGR SE: 355766 (centre). The area was irregular in form and 5ha. in extent. The maximum length N-S was c.385m (line D) and the maximum width E-W was 200m

The field had been freshly drilled, except for a c.20m wide zone along the northern, western and southern boundaries of the site, which presented an uneven ploughed surface.

The origin of the grid was formed by the E-W hedge boundary at the north of the site; due to the irregular southern and eastern boundaries of the area. Line segments were numbered from 1 to a maximum of 39 southwards from this hedge boundary (Fig. 10). The eastern lines S, T and U were walked southwards from a point 150m south of the grid origin because of the irregular eastern boundary of the area, which cut obliquely across the grid.

Lines A, B, C, G, H, I, M, N, O, S, T, and U were walked from north to south at 10m intervals; the remainder of the lines were walked from south to north at the same interval.

The ground conditions were dry at the time of walking and there was even light without shadow.

Results

A total of 22 artefacts were recorded (Fig. 11):

Pottery: 17 sherds were identified:

Romano-British: single sherds of ?black-burnished type from line segments B34 and H6.

Post-medieval: a total of 4 sherds were recorded, 1 in each line segment H1, H2, K7 and Q3.

Modern: a total of 10 modern sherds were observed, occurring in line segments D1, M10, M14, M15, M27, Q5 and R2.

Unidentified: a single unidentified sherd was situated in line segment H1.

Struck flint flakes: a total of 3 unworked waste flakes were noted, 2 from line segment I15 (1 patinated grey, the other dark grey) and 1 from line segment S4 (dark grey patina).

Iron: a (modern?) iron nail was noted in line segment Q11.

Glass: a sherd of modern bottle glass was noted in line segment N31.

Conclusions

The artefact distribution in Area A5 represents a thin scatter not suggestive of any ancient or significant activity in the immediate vicinity.

Recommendations

The results of the initial fieldwalking of the area would not in themselves call for further work in Area A5.

7. Bibliography

**Dennison. E., A1 Dishforth to North of Leeming Improvements:Archaeological Desktop Survey.
Vol. 1. Factual report – Appendices (second draft 8.3.93).**

Finds Catalogue

Area A1

POTTERY

G29 - 1 post medieval purple coarseware

I8 - 1 modern white glaze sherd

BRICK AND TILE

E20 - 1 brick frag

E27 - 1 brick frag ?land drain

J3 - 1 brick frag modern

J17 - 1 brick frag

FLINT

A4 - dark grey flake

A15 - grey flake

C4 - 1 waste flake

F9 - 1 flake

H13 - 1 flake

GLASS

E31 - 1 blue stamped bottle frag

Area A2

POTTERY

A2 - 1 modern blue/white transfer sherd

A6 - 1 modern blue/white transfer

B10 - 1 Roman

1 unidentified

D2 - 1 modern

D5 - 2 modern sherds

D8 - 1 post med

2 modern

D9 - 2 modern

D11 - 1 post med

D12 - 1 post med

E3 - 1 modern blue/white transfer

E4 - 2 modern blue/white transfer

E9 - 1 modern blue/white transfer

E10 - 1 rim modern blue/white transfer

E12 - 1 body modern blue/white transfer

F7 - 1 post med

F8 - 1 post med

F11 - 1 modern

G10 - 1 post med staffordshire

G12 - 1 post med purple glaze

- 1 modern blue/white transfer

H1 - 1 modern

H3 - 1 modern

H7 - 1 modern

H9 - 1 modern

J5 - 1 modern

L8 - 1 post med

- N1 - 1 modern
- N2 - 1 modern
- O2 - 1 post med purple glaze
 - 1 modern blue/white transfer
- P1 - 1 post med
- P3 - 1 med
- P4 - 2 med
- P5 - 2 post med
- U1 - 1 modern white glaze
- U2 - 1 Roman greyware
 - 1 modern blue/white transfer
- U6 - 1 modern blue/white transfer
- W2 - 1 modern white glaze
- W4 - 1 modern blue/white transfer

BRICK /TILE

- A10 - 1 modern frag
- C6 - 1 pantile frag
- C8 - 1 pantile frag
- E1 - 1 modern frag
- F11 - 1 frag
- I1 - 1 modern frag
- I4 - 1 modern tile frag
- I6 - 1 modern frag
- J7 - 1 frag
- O3 - 1 frag
- S1 - 1/4 modern brick
- S4 - 1 modern frag
- S6 - 1 modern frag

FLINT

- E1 - 2 flakes
- E5 - 1 flake brown
- F5 - 1 flake brown
- O3 - 1 flake blue/grey
- O4 - 1 flake blue /grey
- P5 - 1 scraper. 27x11x10mm.
- Q2 - 1 flake blue/grey
- S5 - Scraper in blue/grey flint. Cortex remnant, and percussion bulb ,with no secondary retouch. 47x36x9mm.

GLASS

- A7 - 1 bottle frag clear modern
- B5 - 1 modern glass
- B7 - 1 modern glass
- B8 - 3 modern frags
- C12 - 1 bottle frag clear modern
- D4 - 1 frag
- F4 - 1 frag
- F6 - 1 modern frag
- F9 - 1 modern frag
- F12 - 1 modern frag
- G12 - 1 base frag blue
- H4 - 1 modern glass
- N5 - 1 modern frag

CLAY PIPE

D9 - 1 stem

Area A3

POTTERY

B7 - 1 Roman black burnished ware
B8 - 3 Roman black burnished ware
B1 - 1 white transfer ware body sherd
B3 - 1 white glazed body sherd
B10 - 1 Roman greyware
C2 - 1 medieval body sherd
C8 - 1 post med staffordshire rim
D5 - 1 Roman black burnished ware
E5 - 1 post med purple coarse ware rim
F1 - 1 Roman
F11 - 1 modern
H5 - 1 Roman black burnished ware

BRICK / TILE

A8 - 1 frag
C2 - 1 tile frag
E3 - 1 tile frag
E8 - 1/4 modern brick
F1 - 1 modern frag
G1 - 1 modern tile frag
G10 - 1 modern tile frag
I2 - 1 frag

GLASS

C3 - 1 modern blue
D2 - 1 modern

CLAY PIPE

F1 - 1 stem
G4 - 1 stem

ANIMAL BONE

A10 - 1 ulna
I2 - 1 toe bone

OTHER

C2 - 1 coal frag
E8 - 1 coal frag
C3 - 1 mortar frag

Area A4 (i)

POTTERY

A18 - 1 ?Humber ware body sherd
B12 - 1 Roman body sherd
C17 - 1 Staffordshire ware body sherd
D25 - black burnished body sherd
 - 1 ?Humber body sherd
E7 - 1 white glaze body sherd
E23 - 1 white glaze body sherd

- F18 - 1 black burnished body sherd
- F32 - 1 post medieval body sherd
- G38 - 1 white glaze body sherd
- H25 - 2 post medieval body sherd
- I10 - 1 purple ware coarseware body sherd
- J29 - 1 modern white earthenware body sherd
- K20 - 1 post medieval Staffordshire ware body sherd
- L31 - 1 ?black burnished body sherd

BRICK/TILE

- C25 - 1 frag
- D25 - 1 frag
- E5 - 1 frag
- E6 - 1 frag
- E36 - 1 frag
- F20 - 1 frag
- F36 - 1 frag
- H23 - 1 frag
- H36 - 1 frag
- J25 - 1 frag
- L27 - 1 frag
- L28 - 1 frag

FLINT

- C6 - 2 flakes - blue/grey patinated flint
- C20 - 2 flakes - blue/grey patinated flint
- C21 - 2 flakes - blue/grey patinated flint
- C23 - 1 scraper in blue/grey patinated flint with secondary retouch on distal; proximal broken.
27x22x6mm.
- C28 - 1 flake - blue/grey patinated flint
- E11 - 1 flake with secondary retouch on right lateral
- E12 - 1 flake - blue/grey patinated flint
- E25 - 1 flake - blue/grey patinated flint with percussion bulb
- E32 - 1 flake - blue/grey patinated flint
- E36 - 1 flake - blue/grey patinated flint
- F34 - 1 flake with secondary retouch on right lateral - blue/grey
- G11 - 1 flake - blue/grey patinated flint
- G26 - 1 flake - blue/grey patinated flint
- I7 - 1 flake - blue/grey patinated flint
- I8 - 1 flake - blue/grey patinated flint with percussion bulb
- I13 - 1 flake - blue/grey patinated flint
- I15 - 1 flake - blue/grey patinated flint
- K20 - 1 flake - blue/grey patinated flint
- K23 - 1 flake - blue/grey patinated flint
- K24 - 1 flake - blue/grey patinated flint
- K30 - 1 flake - blue/grey patinated flint
- O30 - 1 flake - blue/grey

GLASS

- B16 - 1 frag - green
- E24 - 1 frag - light green
- F17 - 1 frag - clear
- F35 - 1 frag - green

ANIMAL BONE

- H10 - 1 leg bone from a bird - modern
- J1 - 1 clavicle - modern
- M19 - 1 frag unidentifiable

COAL

C6 - 1 small frag

Area A4ii

POTTERY

D-1 - 1 yellow glazed earthenware body sherd

J19 - 1 blue and white transfer body sherd

K-4 - 1 greyware body sherd

L19 - 1 yellow glazed earthenware body sherd

M15 - 1 purple glazed coarseware body sherd

BRICK/TILE

B3 - 1 frag of drainage tile

B4 - 1 complete modern brick

C1 - 0.5 of a modern brick

D7 - 1 frag

E10 - 1 frag

H-4 - 1 frag

H4 - 1 frag

I6 - 1 frag

L-1 - 1 frag

L2 - 1 frag

L24 - 1 complete brick

1 frag

M7 - 1 frag

M17 - 1 frag

M23 - 1 frag

M24 - 1 frag

N26 - 1 complete brick

FLINT

H-2 - 1 flake - blue/grey patinated flint

H8 - 1 flake - blue/grey patinated flint

J16 - 1 flake - blue/grey patinated flint

L-2 - 1 flake - white/blue

L12 - 1 flake - blue/grey patinated flint

L18 - 1 flake - blue/grey patinated flint

L22 - 1 flake - blue

L24 - 1 flake - dark blue

M10 - 2 flakes - blue/grey patinated flint

N13 - 2 flakes - blue/grey patinated flint

N14 - 1 flake - blue/grey patinated flint

GLASS

E10 - 1 frag - black

H14 - 1 frag - black

I17 - 2 frags - clear

J18 - 1 frag - purple/black

Area A5

POTTERY

B34 - 1 Roman
H1 - 1 post med
 1 unidentified
H2 - 1 post med
H6 - 1 Roman
K7 - 1 post med
Q5 - 1 medieval
Q21 - 1 post med
R2 - 1 modern blue/white transfer

FLINT

I15 - 1 waste flake grey
 - 1 waste flake dark grey

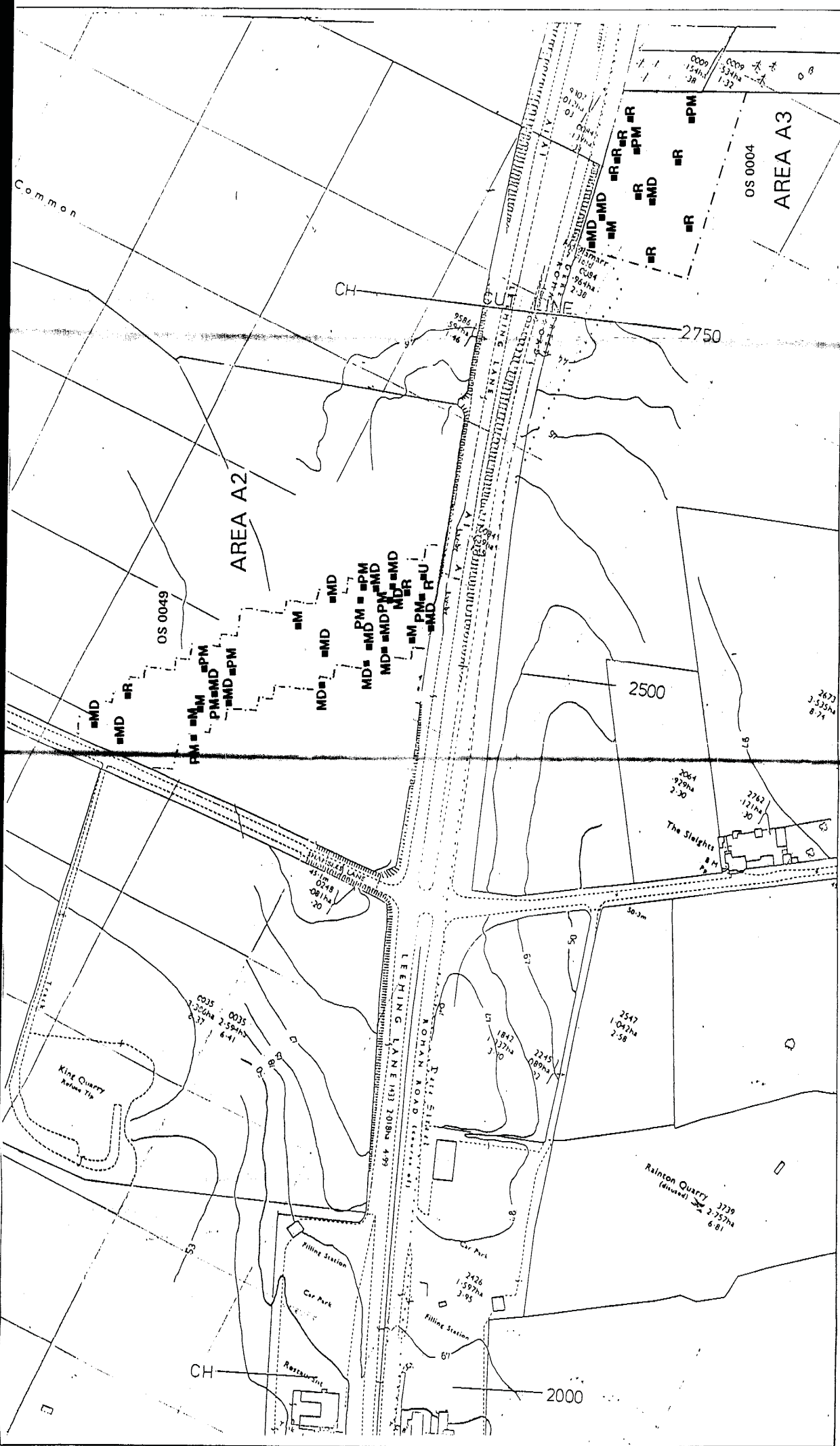
GLASS

N31 - 1 modern

METAL

Q11 - 1 fe nail

FIGURES 2-11

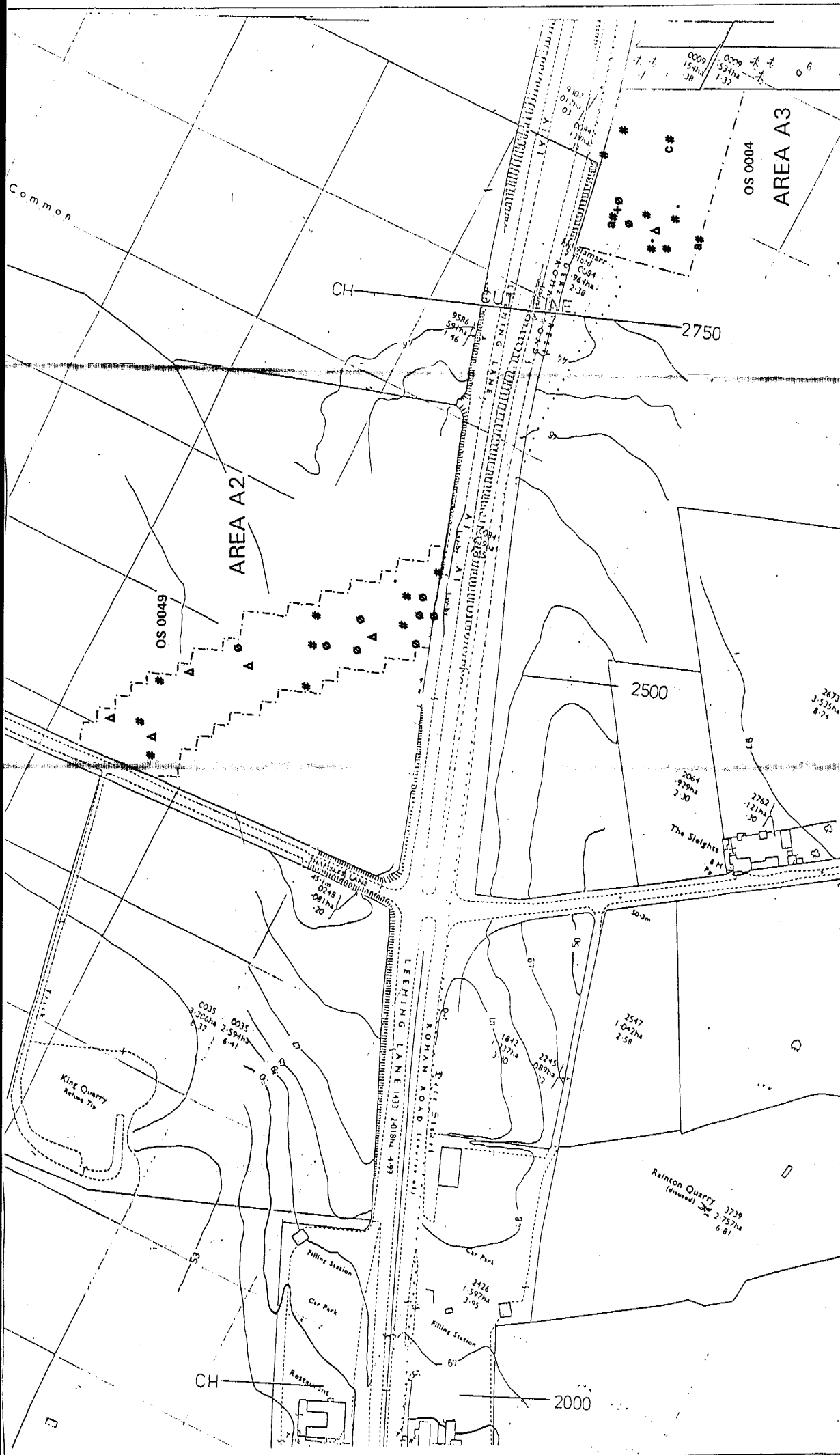


MAP Archaeological Consultancy Ltd, 39 Grogan, Malton, North Yorkshire. OS Licence Number AL 5053A.

PROJECT	A1 DISHPORTH TO NORTH OF LEEMING IMPROVEMENTS STAGE 2 ARCHAEOLOGICAL WORKS
TITLE	Areas A2 and A3 - Pottery Distribution
SCALE	1:2500
DRAWING	FIGURE 6

ORIGINAL AT A3	
POTTERY R = Roman M = Medieval PM = Post medieval MD = Modern U = Unidentified	

*Reproduced from Ordnance Survey 1:25,000 map with the permission of the Controller of Her Majesty's Stationary Office. © Crown Copyright.



MAP Archaeological Consultancy Ltd, 39 Grogan, Malton, North Yorkshire. OS Licence Number AL 50453A.

PROJECT: DISHFORTH TO NORTH OF LEEMING IMPROVEMENTS
STAGE 2 ARCHAEOLOGICAL WORKS

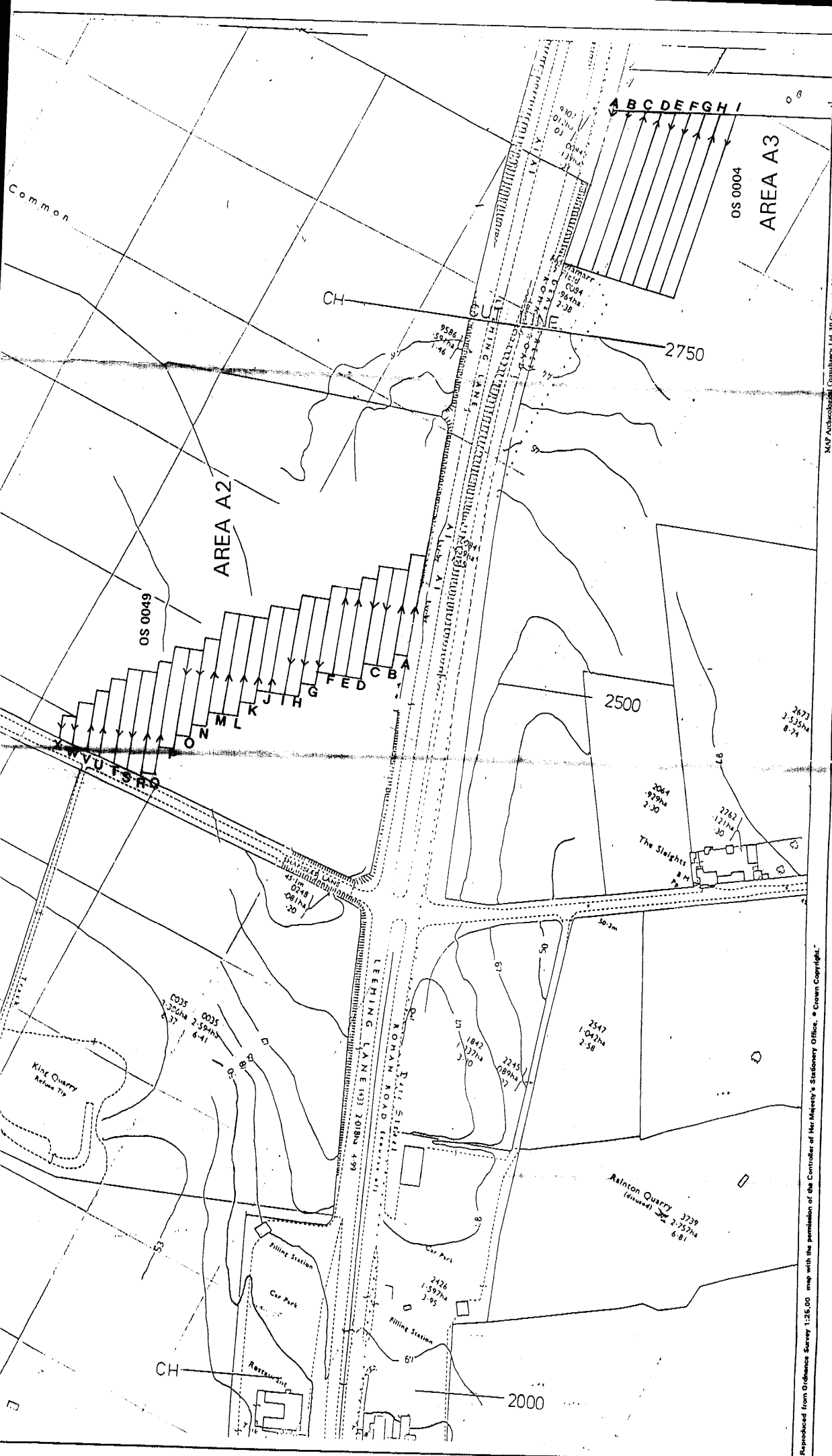
TITLE: Areas A2 and A3 - Artefact Distribution

SCALE: 1:2500

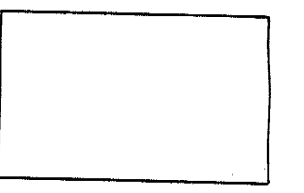
DRAWING: FIGURE 5

Reproduced from Ordnance Survey 1:25,000 map with the permission of the Controller of Her Majesty's Stationery Office. © Crown Copyright.

Δ = Struck flint c = Coal a = Animal bone
 # = Brick/tile • = Clay pipe ORIGINAL AT A3
 ◊ = Glass + = Mortar



PROJECT	A1 DISHFORTH TO NORTH OF LEEMING IMPROVEMENTS STAGE 2 ARCHAEOLOGICAL WORKS
TITLE	Areas A2 and A3 - Linewalking Grid
SCALE	1:2500
DRAWING	FIGURE 4

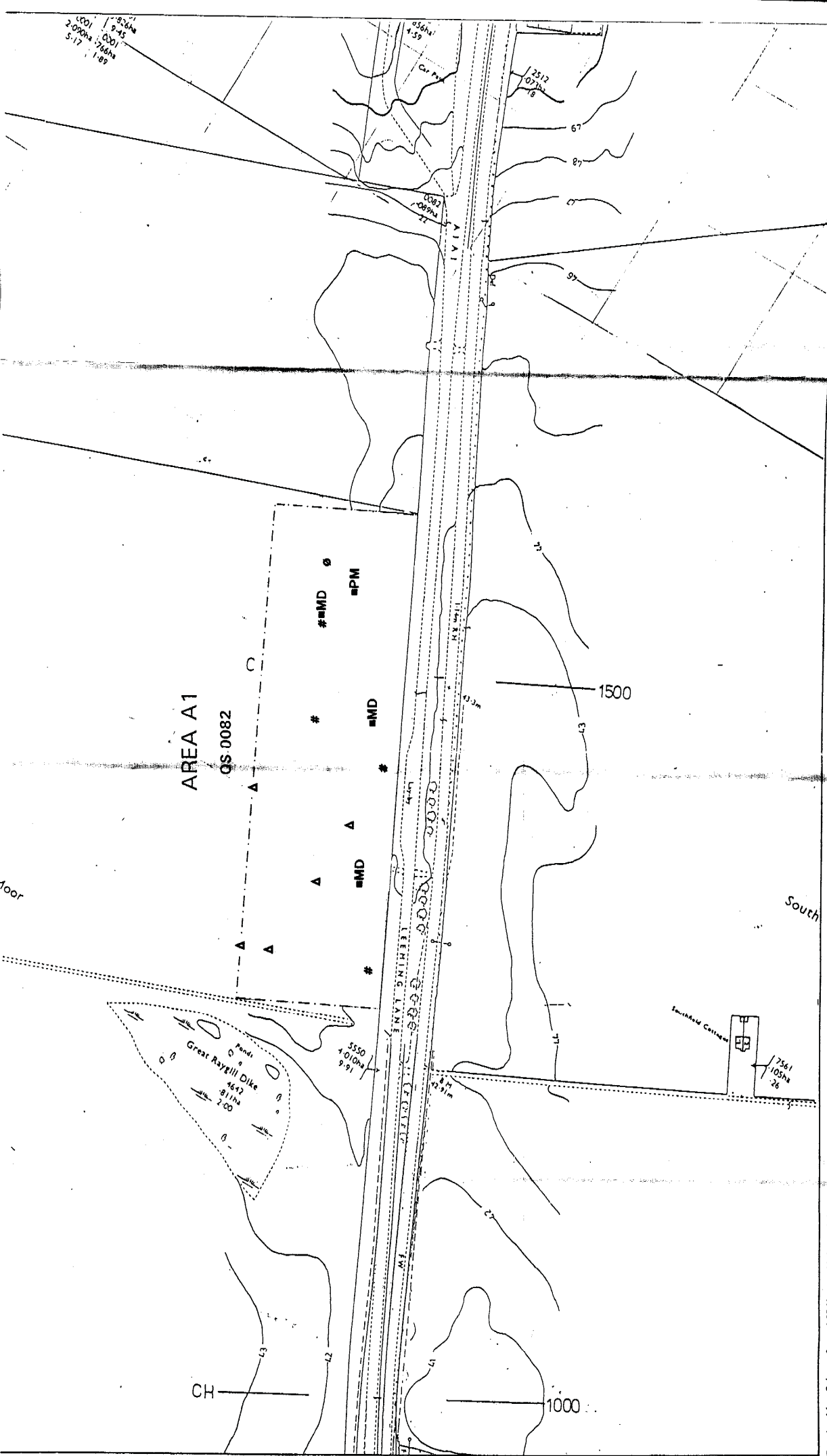


ORIGINAL AT A3

→ = Direction of walk

*Reproduced from Ordnance Survey 1:25,000 map with the permission of the Controller of Her Majesty's Stationery Office. © Crown Copyright.

MAP Archaeological Consultancy Ltd, 39 Grogan St, Malton, North Yorkshire. OS Licence Number AL 50455A.



MAP ARCHAEOLOGICAL CONSULTANTS Ltd, 39 Grogan, Malton, North Yorkshire. OS Licence Number AL 50453A.

PROJECT: A1 DISFORTH TO NORTH OF LEEMING IMPROVEMENTS
STAGE 2 ARCHAEOLOGICAL WORKS

TITLE: Area A1 - Artefact Distribution

SCALE: 1:2500

BRAWING:

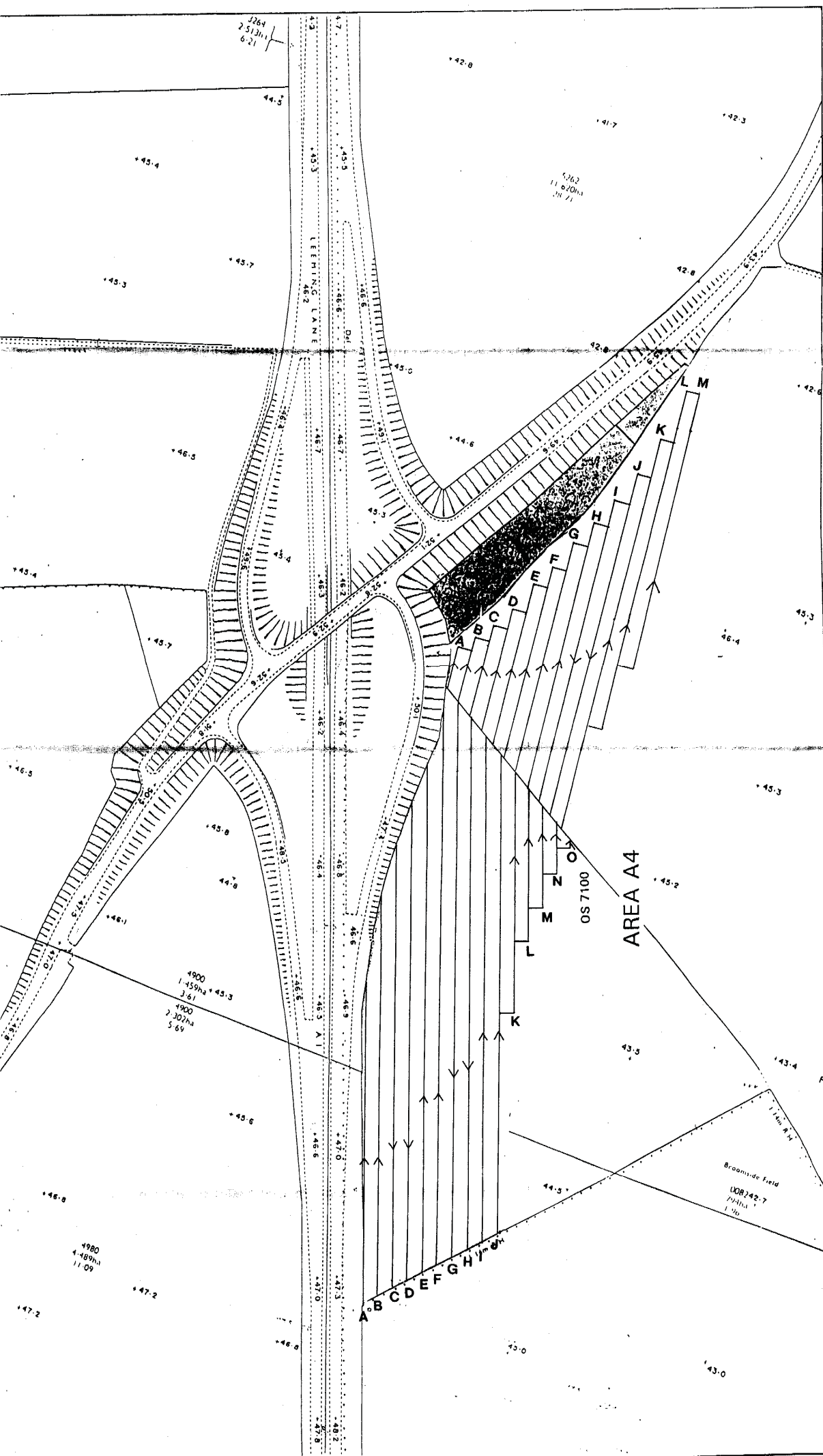
FIGURE 3

POTTERY

▲ = Struck flint
 # = Brick/tile
 ○ = Glass
 PM = Post medieval
 MD = Modern

ORIGINAL AT A3

Reproduced from Ordnance Survey 1:25 000 map with the permission of the Controller of Her Majesty's Stationery Office. © Crown Copyright.



PROJECT	A1 D SHFORTH TO NORTH OF LEEMING IMPROVEMENTS STAGE 2 ARCHAEOLOGICAL WORKS
TITLE	Area A4 - Linewalking Grid
SCALE	

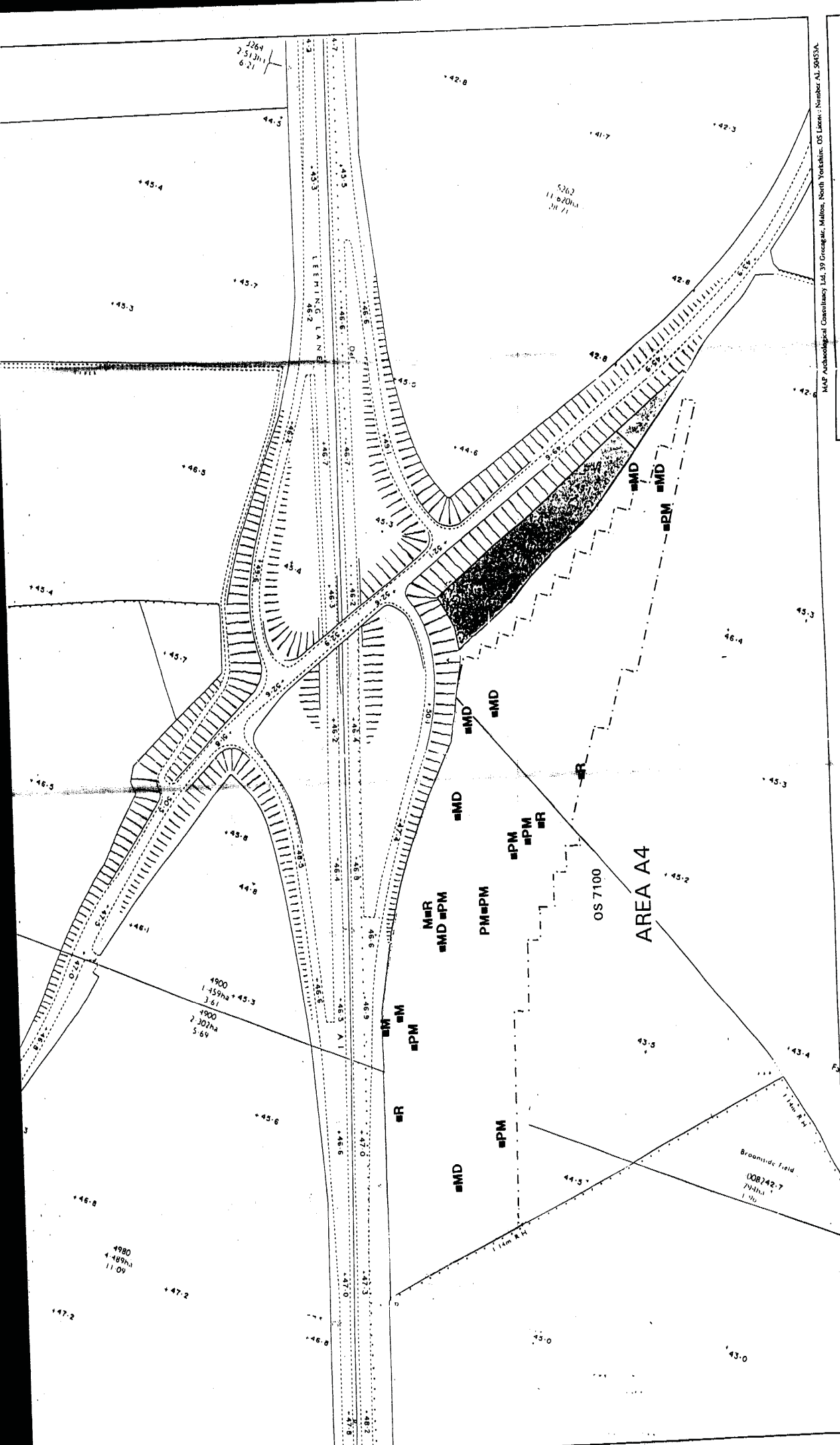
Reproduced from Ordnance Survey 1:25 00 map with the permission of the Controller of Her Majesty's Stationery Office. © Crown Copyright.

ORIGINAL AT A3

→ = Direction of walk

DRAWING

FIGURE 7



MAP Archaeological Consultancy Ltd, 39 Greengate, Malton, North Yorkshire, OS Licence: Number AL 50553A.

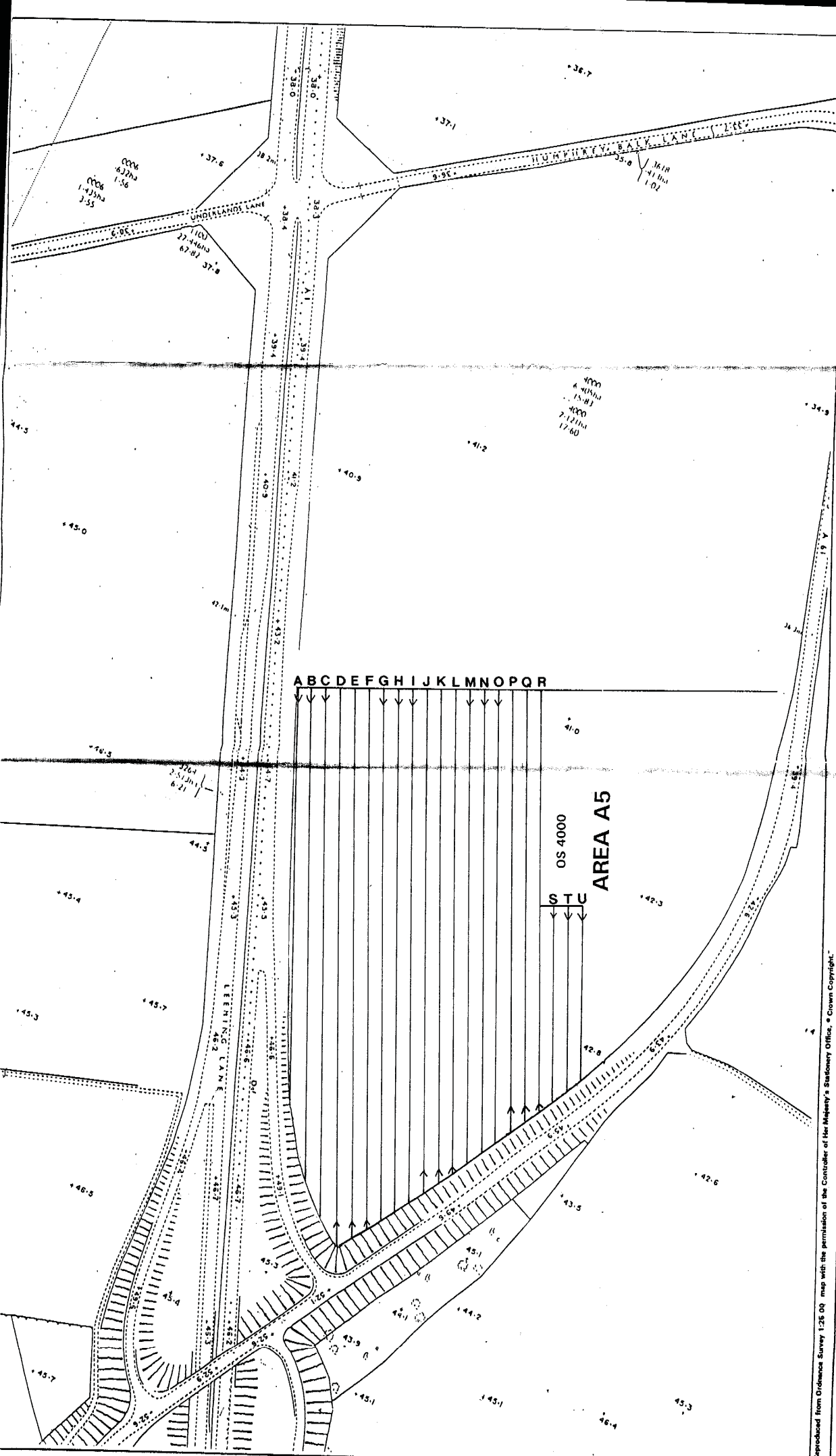
PROJECT	A1 DISHFORTH TO NORTH OF LEEMING IMPROVEMENTS STAGE 2 ARCHAEOLOGICAL WORKS	
TITLE	Area A4 - Pottery Distribution	
SCALE	1:2500	DRAWING
		FIGURE 9

Reproduced from Ordnance Survey 1:25 00 map with the permission of the Controller of Her Majesty's Stationery Office. © Crown Copyright.

ORIGINAL AT A3

R = Roman
M = Medieval
PM = Post medieval

MD = Modern

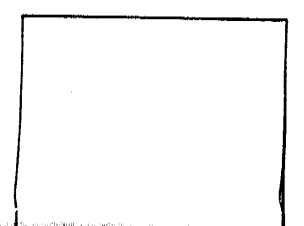
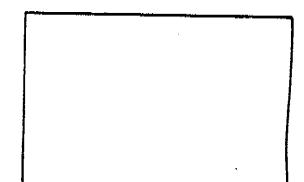


PROJECT
 MAP Archaeological Consultancy Ltd, 39 Grogan Ave, Malton, North Yorkshire, OS Licence Number AL 90453A

TITLE
**A1 DISH NORTH TO NORTH OF LEEMING IMPROVEMENTS
 STAGE 2 ARCHAEOLOGICAL WORKS**

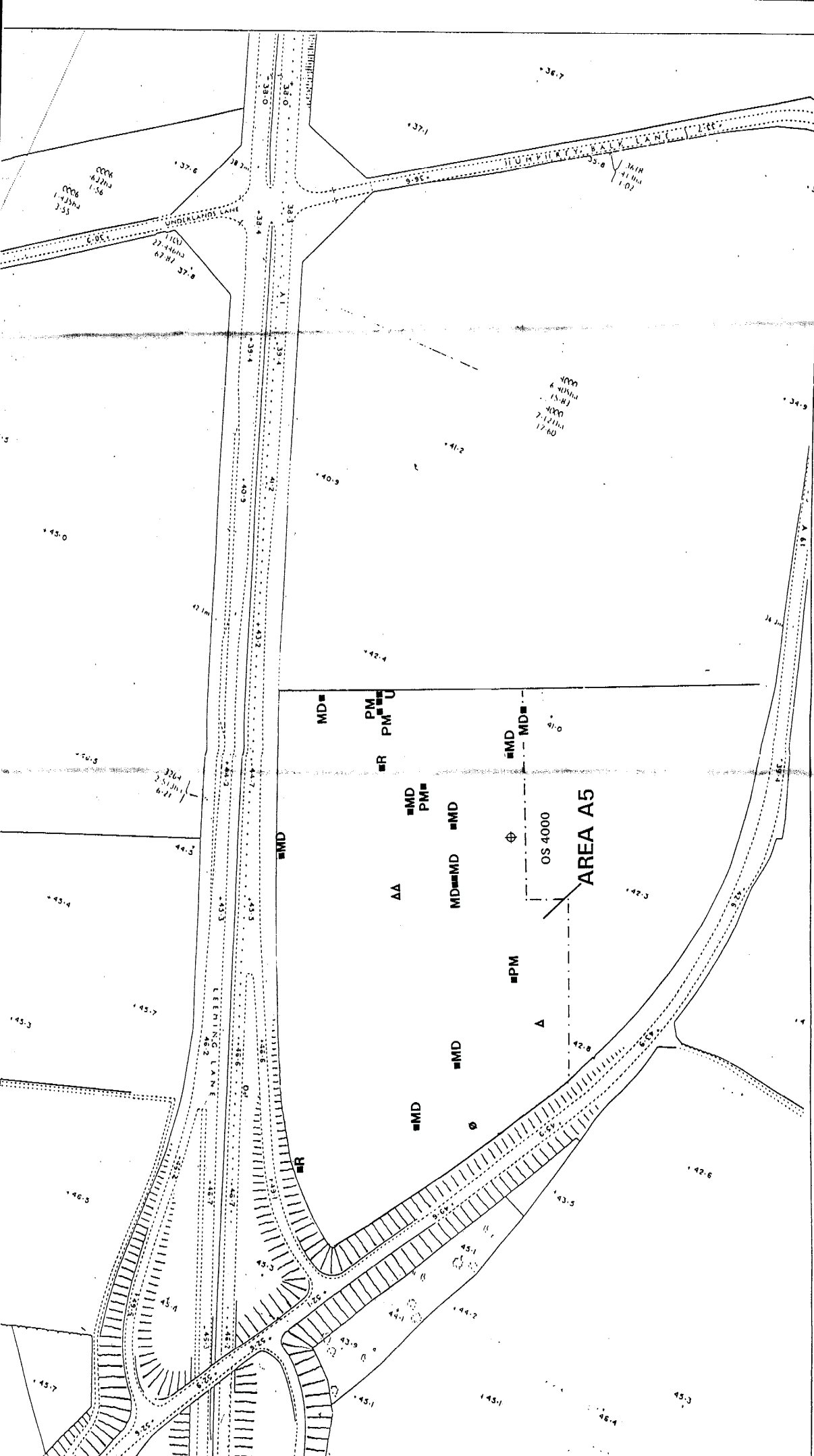
SCALE
1:2500

DRAWING
FIGURE 10



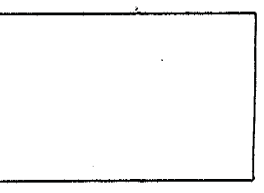
ORIGINAL AT A3

Reproduced from Ordnance Survey 1:25 000 map with the permission of the Controller of Her Majesty's Stationery Office. © Crown Copyright.



MAP Archaeological Consultancy Ltd 37 Grosvenor, North York, Leic. OS Licence Number AL 90437A
 PROJECT
 A1 DISHFORTH TO NORTH OF LEEMING IMPROVEMENTS
 STAGE 2 ARCHAEOLOGICAL WORKS

TITLE	Area A5 - Artefact Distribution	
SCALE	1:2500	DRAWING



ORIGINAL AT A3

POTTERY	□ = Roman	○ = Glass
	PM = Post medieval	⊕ = Fe object
	MD = Modern	△ = Struck Flint
	U = Unidentified	

FIGURE 11

Reproduced from Ordnance Survey 1:25 00 map with the permission of the Controller of Her Majesty's Stationery Office. © Crown Copyright.

TABLES 1-6

TABLE 1

AREA A1

Initial Fieldwalking

Finds Distribution

	A	B	C	D	E	F	G	H	I	J	K
1											
2											
3										B/T	
4	F		F								
5											
6											
7											
8									MD		
9						F					
10											
11											
12											
13								F			
14											
15	F										
16										B/T	
17											
18											
19									MD		
20					B/T						
21											
22											
23											
24											
25											
26											
27					B/T MD						
28											

KEY

F- Flint

B/T - Brick/Tile

Pottery:

MD - Modern Pottery

TABLE 3

AREA A3

Initial Fieldwalking

Finds Distribution

13									
12									
11						MD			
10	A	R							
9									
8	T	R	PM		BC				
7		R							
6	B	R							
5				R	PM			R	
4							CP		
3		MD	GL		T		T		
2			TC M	G		F			TA
1		MD				T CP R	T		
	A	B	C	D	E	F	G	H	I

KEY

B - Brick
 T - Tile
 F - Flint
 G - Glass
 CP - Clay pipe
 C - Coal
 A - Animal bone

Pottery:

R - Roman
 M - Medieval
 PM - Post medieval
 MD - Modern

ORIGINAL AT A3

KEY:
 B - Brick
 T - Tile
 C - Coal
 CP - Clay pipe
 G - Glass
 F - Flint

Pottery:
 R - Roman
 M - Medieval
 PM - Post medieval
 MD - Modern

41																						
40																						
39																						
38																						
37																						
36																						
35																						
34																						
33																						
32																						
31																						
30																						
29																						
28																						
27																						
26																						
25																						
24																						
23																						
22																						
21																						
20																						
19																						
18																						
17																						
16																						
15																						
14																						
13																						
12																						
11																						
10																						
9																						
8																						
7																						
6																						
5																						
4																						
3																						
2																						
1																						

Initial Fieldwalking
 Finds Distribution

TABLE 4
 AREA A41

O N M L K J I H G F E D C B A

TABLE 5
AREA A4(ii)

**Initial Fieldwalking
 Finds Distribution**

	-5	-4	-3	-2	-1	1	2	3	4	5	6	7	8	9	10	11	12	13	14	15	16	17	18	19	20	
A																										
B									B																	
C						B		T																		
D					Md								T													
E															G											
F															T											
G																										
H															A											
I													F													
J																			G							
K																										
L																										
M																										

KEY:

- B - Brick
- T - Tile
- F - Flint
- G - Glass
- A - Animal bone

Pottery:

- R - Roman
- Pm - Post medieval
- Md - Modern

MAP
Archaeological Consultancy Limited
39, Greengate, Malton,
North Yorkshire, YO17 0EL.
Telephone (0653) 697752
Fax (0653) 694747