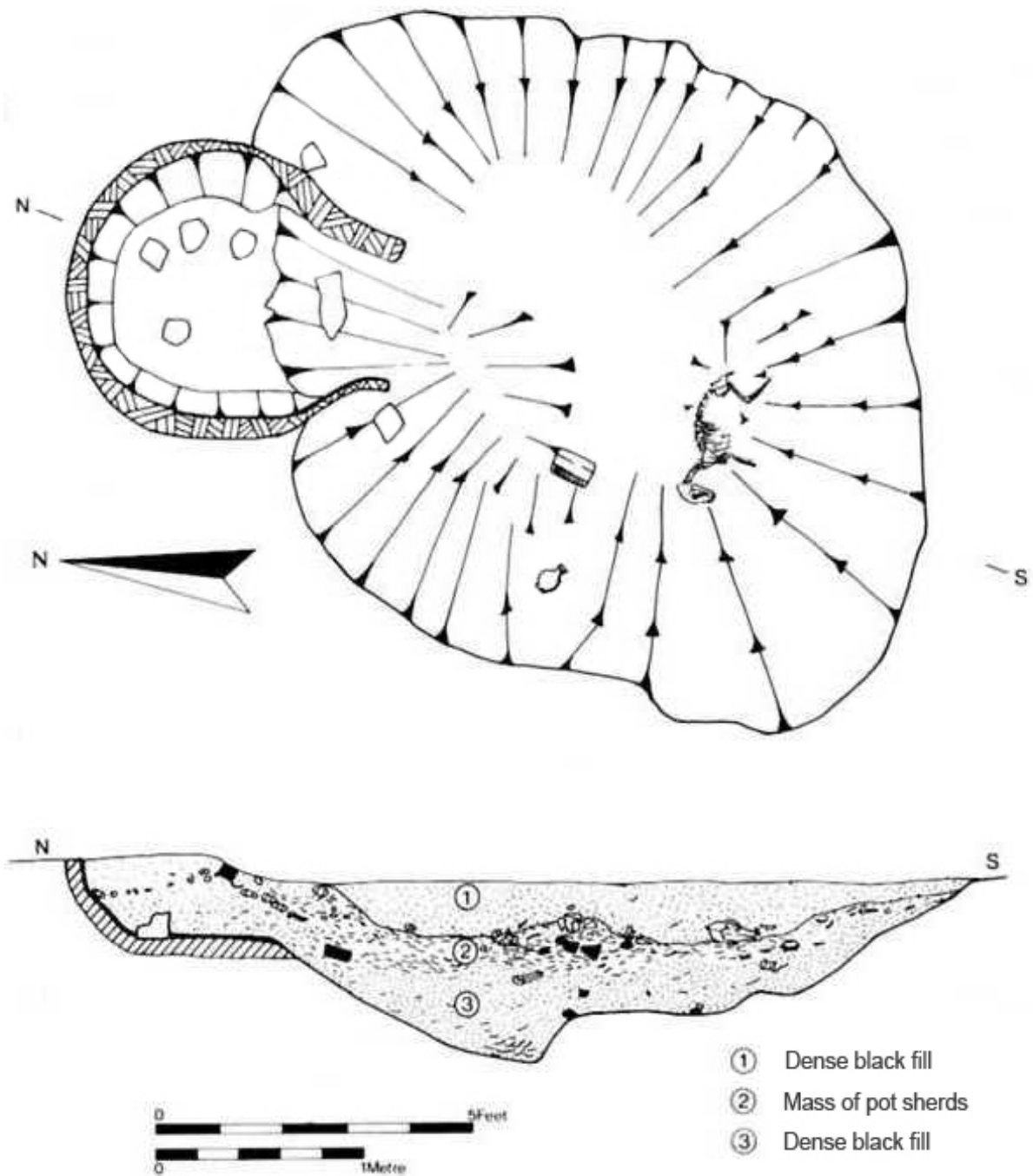


# Romano British Kilns

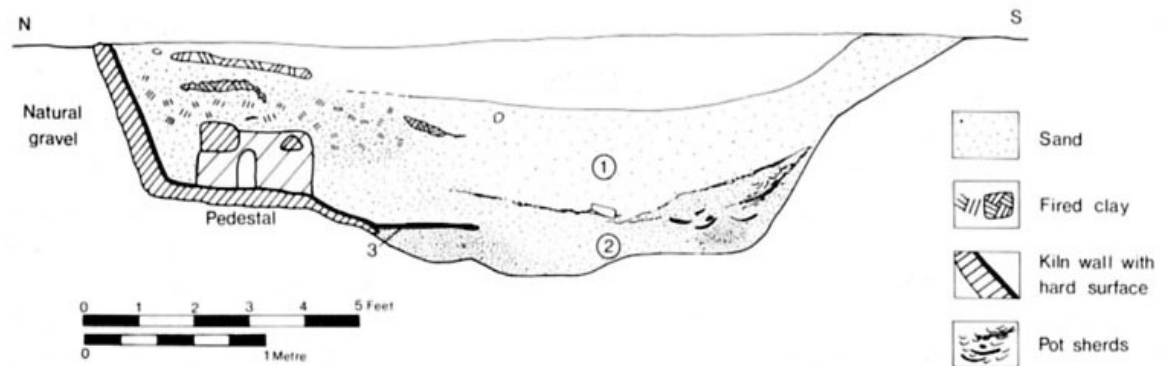
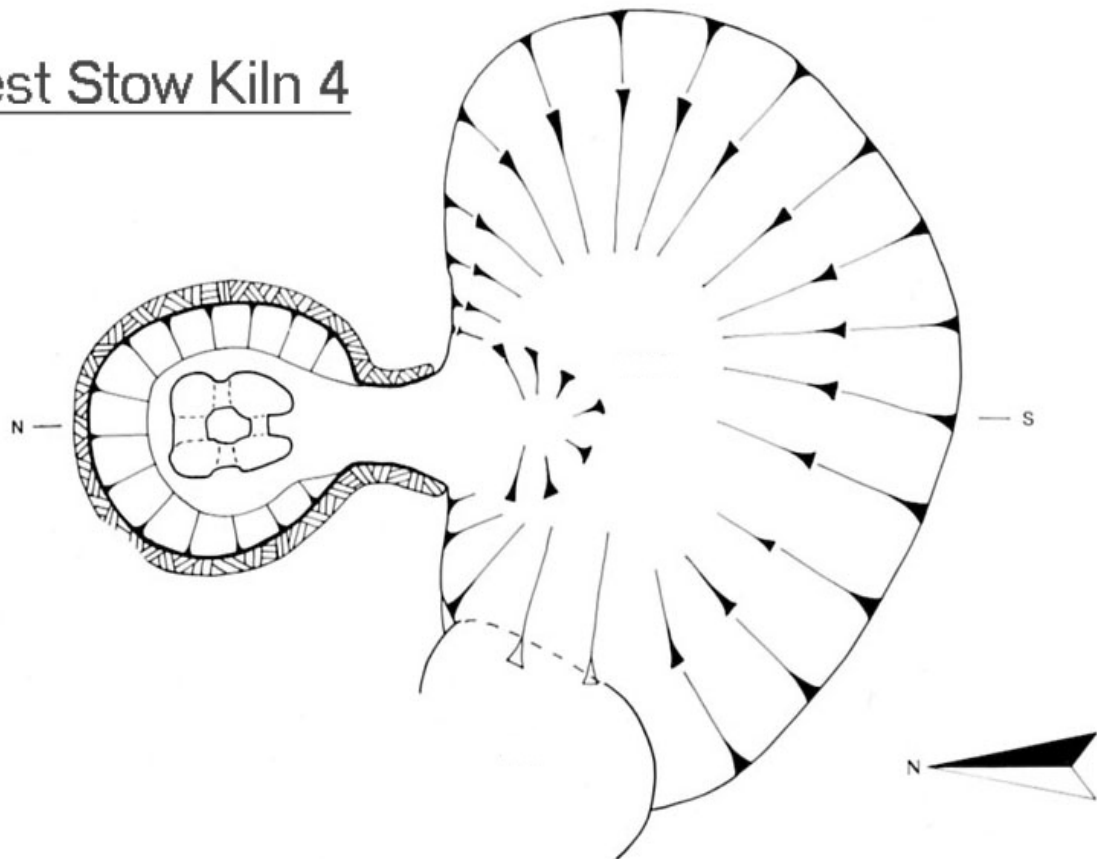




Romano-British Kiln Plan and Section 1:50

A site plan from West Stow

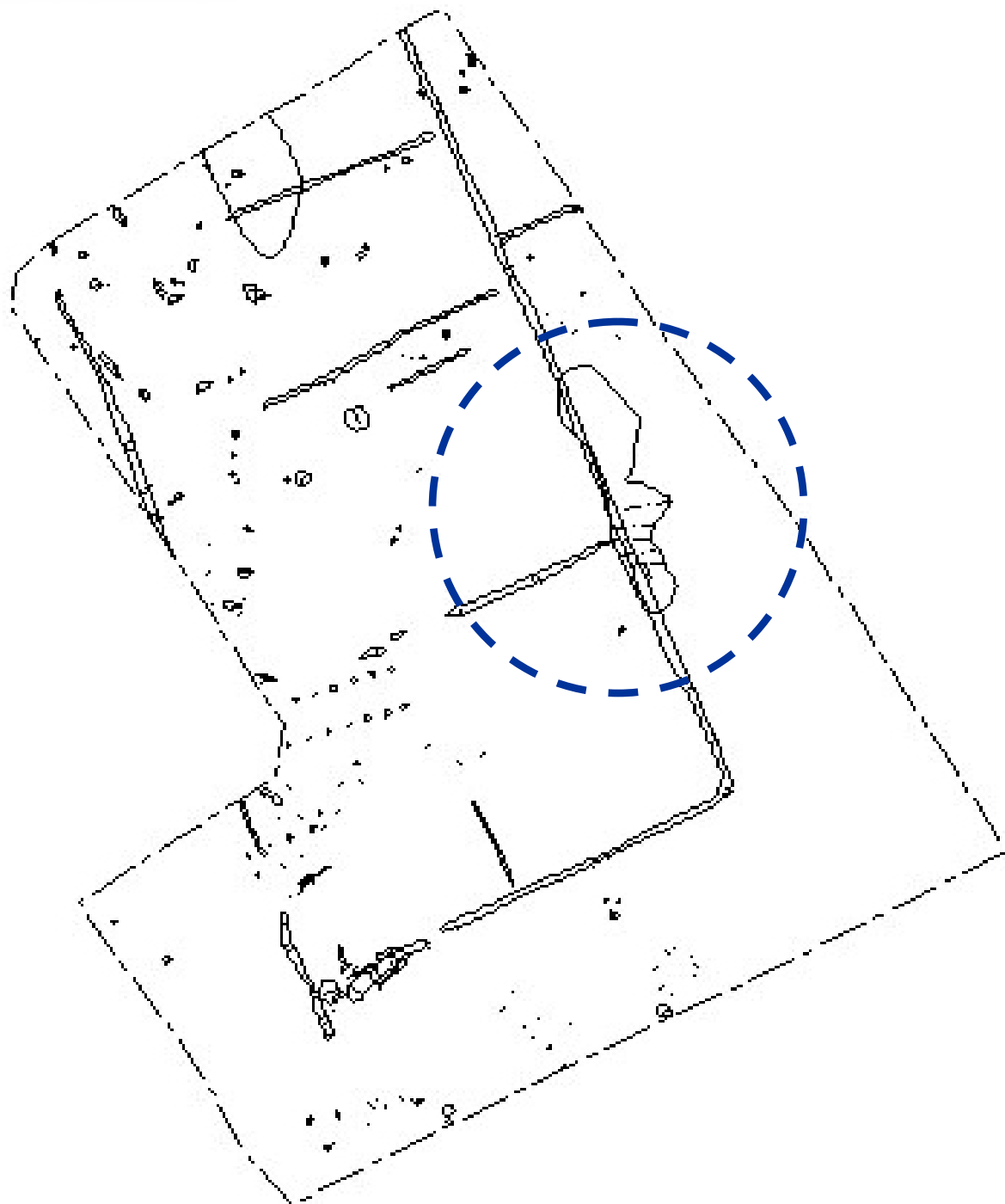
## West Stow Kiln 4



Romano-British Kiln Plan and Section 1:50

A kiln structure and pit, note the central pedestal

## Barham 043 Plan Overview

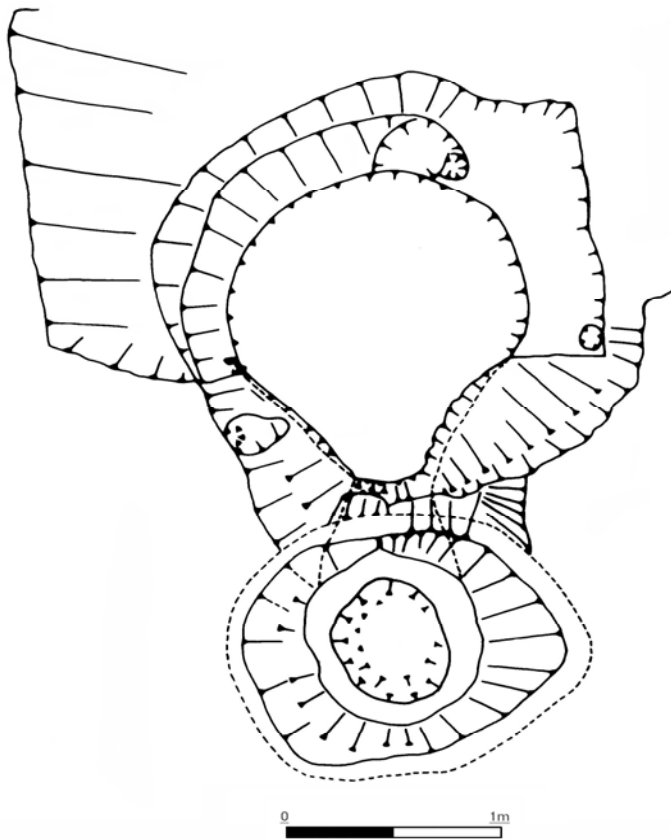


The kiln complex on the site plan



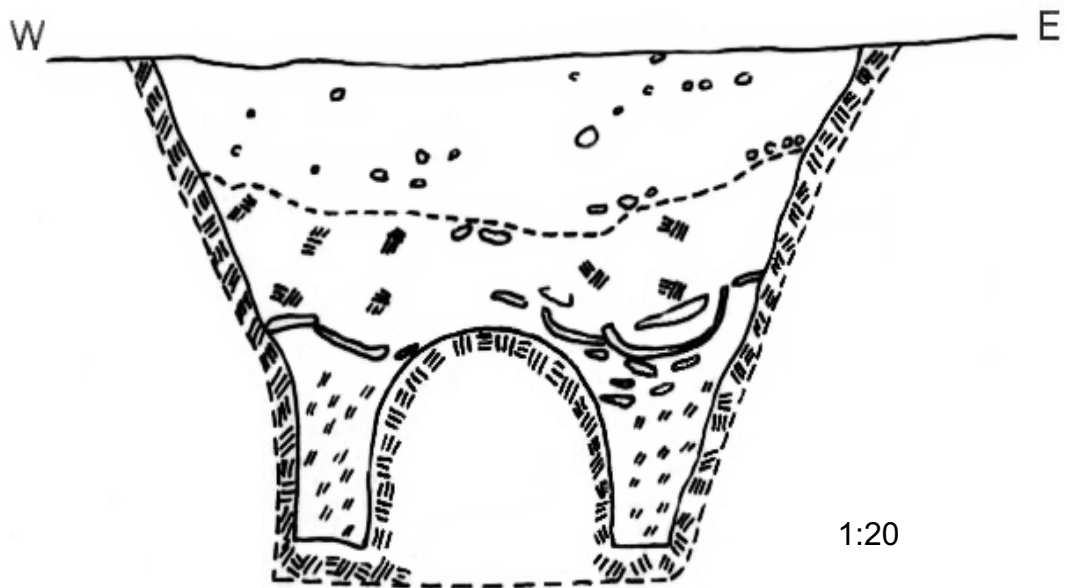


Site photos of the kiln and its complex of pits, Barham 043



Site photograph and plan of the excavated  
kiln complex, Barham 043





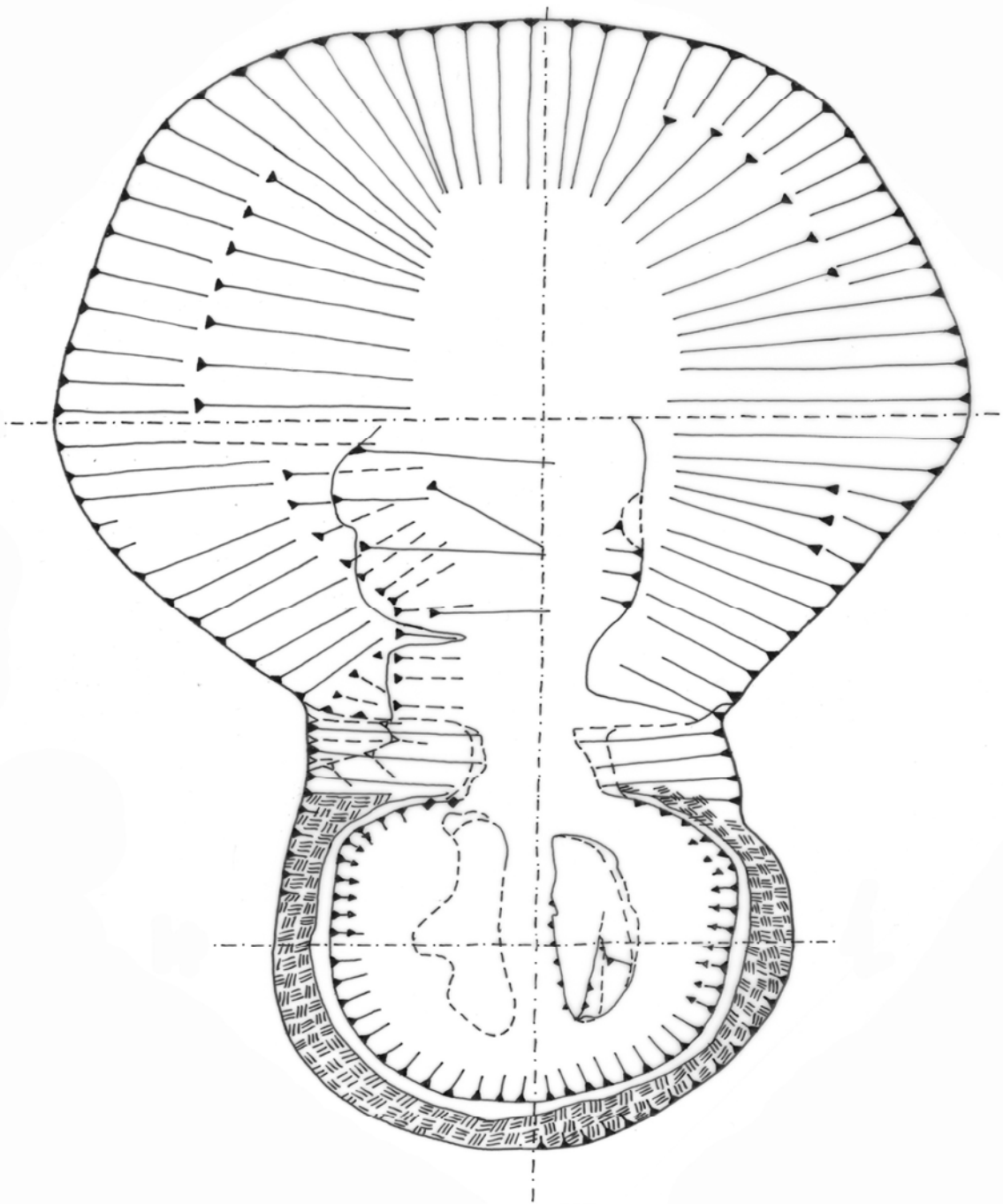
Section photograph and drawing from Barham, showing the concentration of pottery found when the kiln was excavated





Site photographs of the kiln structure.  
The clay at the centre of the pedestal  
has turned red from exposure to heat





## Kiln 0014 Flixton

Site plan of Romano British kiln with  
twin pedestals in the centre

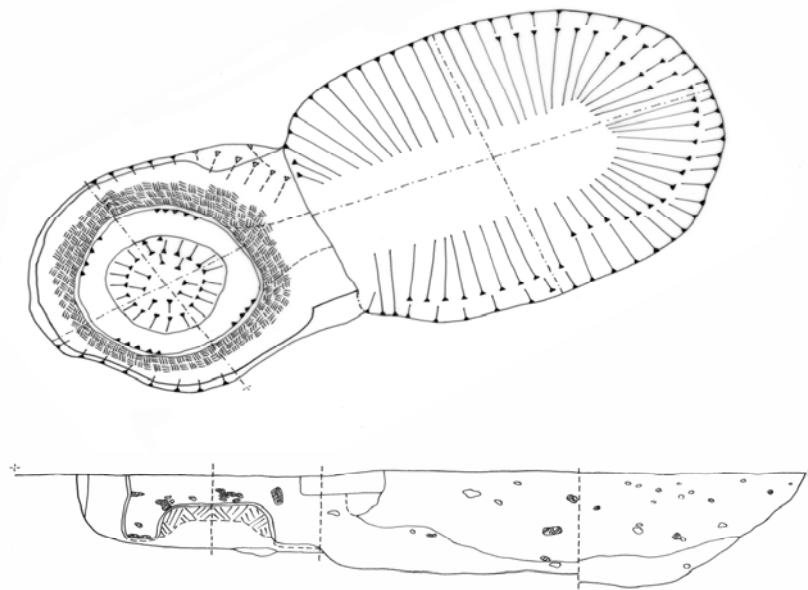


Site photograph of Romano British kiln from Flixton



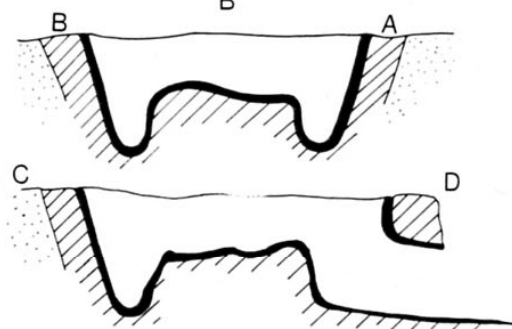
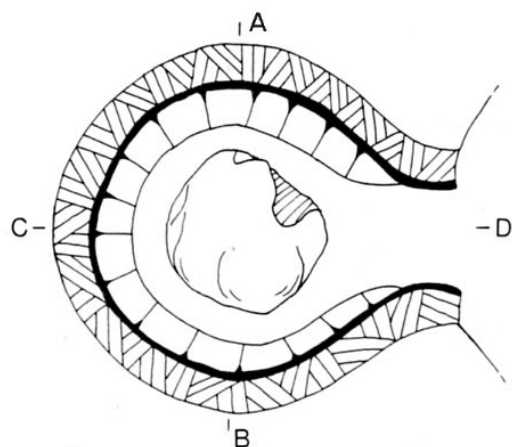


Kiln 0016 Flixton

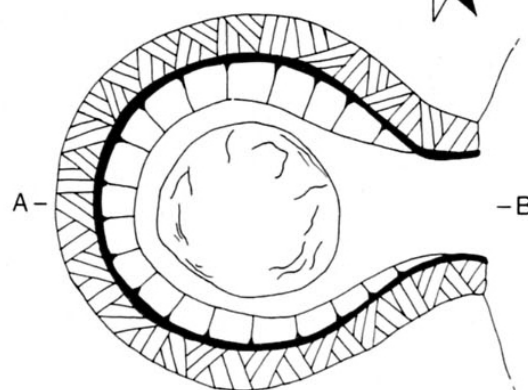


Site plan and photograph of Romano British kiln  
at Flixton, with single round pedestal

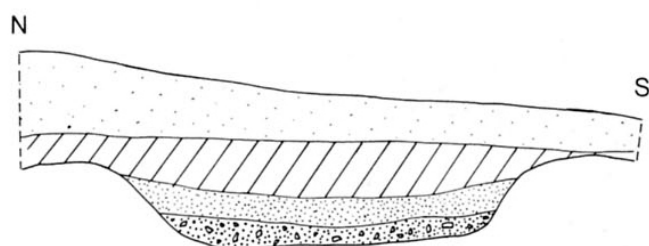
## West Stow Kilns 1 and 2 and Smother Pit



Kiln 1



Kiln 2



Section of Smother Pit

- |  |                                     |
|--|-------------------------------------|
|  | Blown sand Layer 1                  |
|  | 4th Century Layer 2                 |
|  | Dark filling Pit Layer 1            |
|  | Sooty with much pottery Pit Layer 2 |

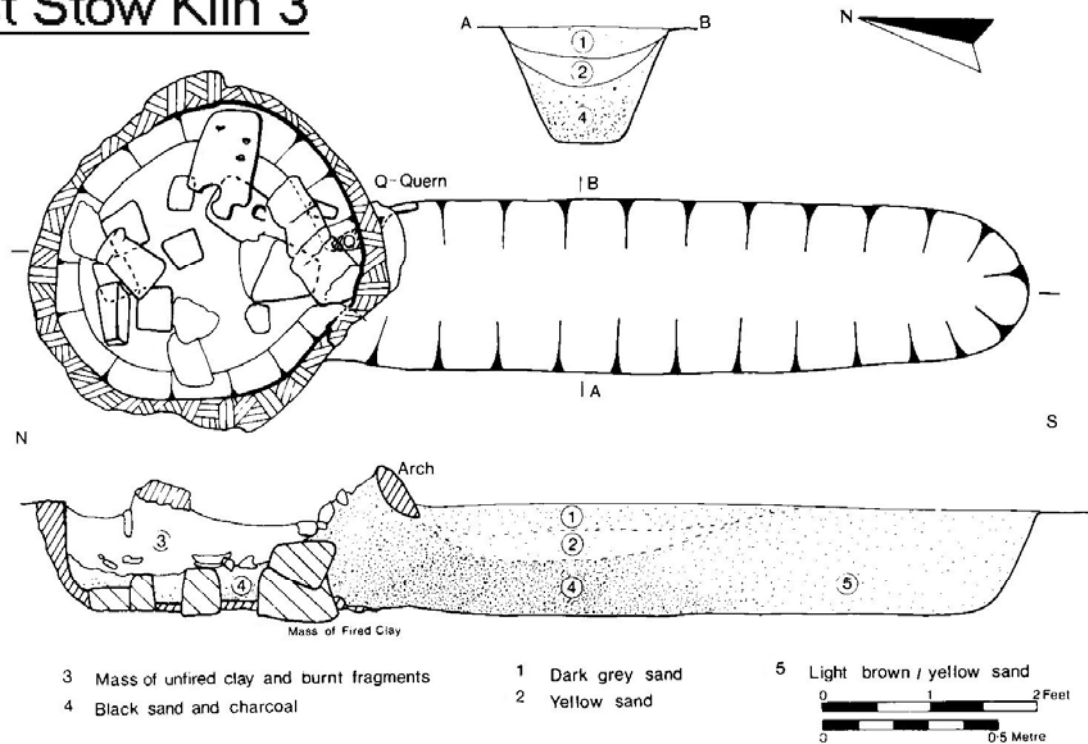


Romano-British Kilns and Smother Pit (1947) 1:25

Site plans from West Stow



## West Stow Kiln 3

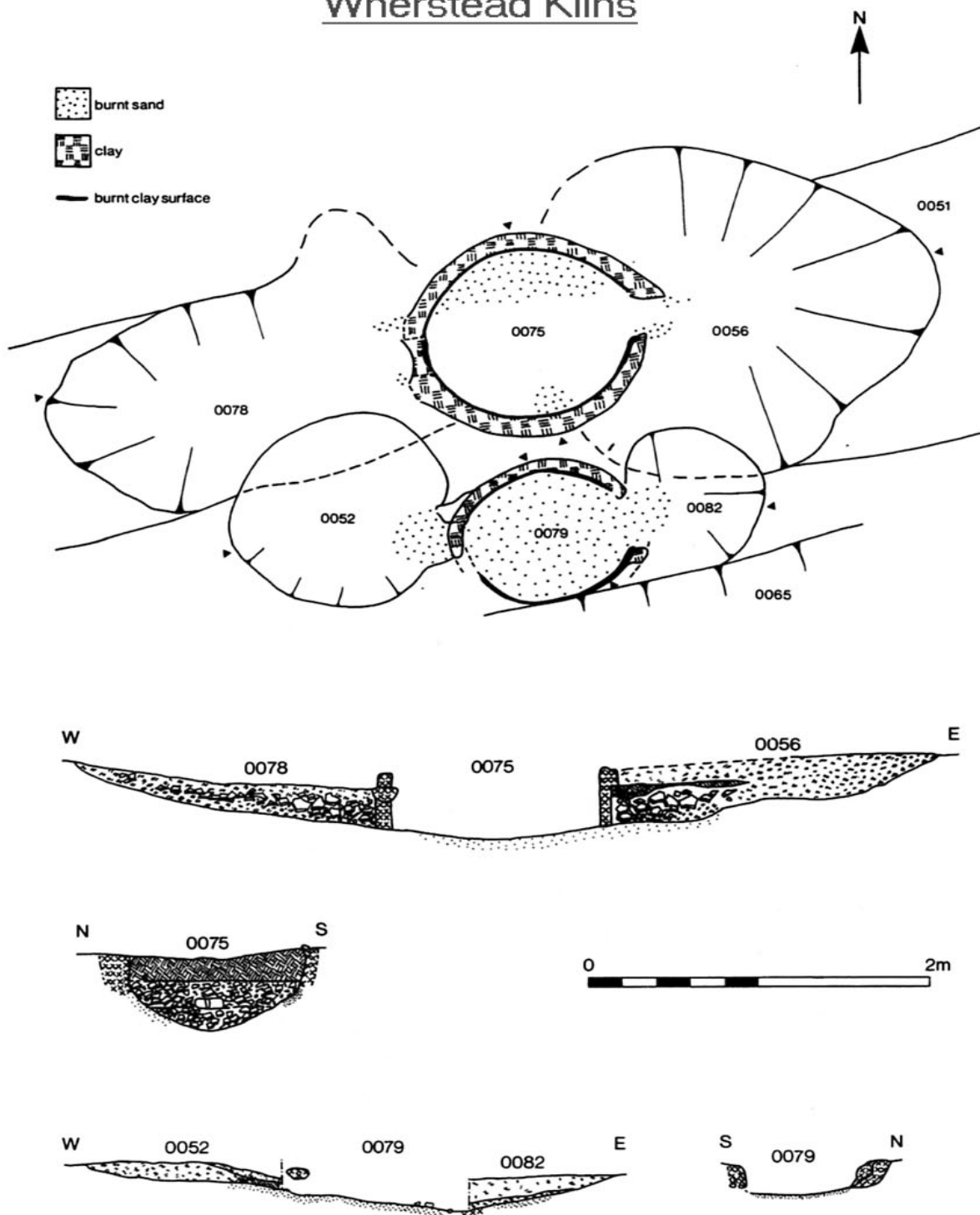


## Romano-British Kiln Plan and Section 1:25



Site plan and photograph from West Stow

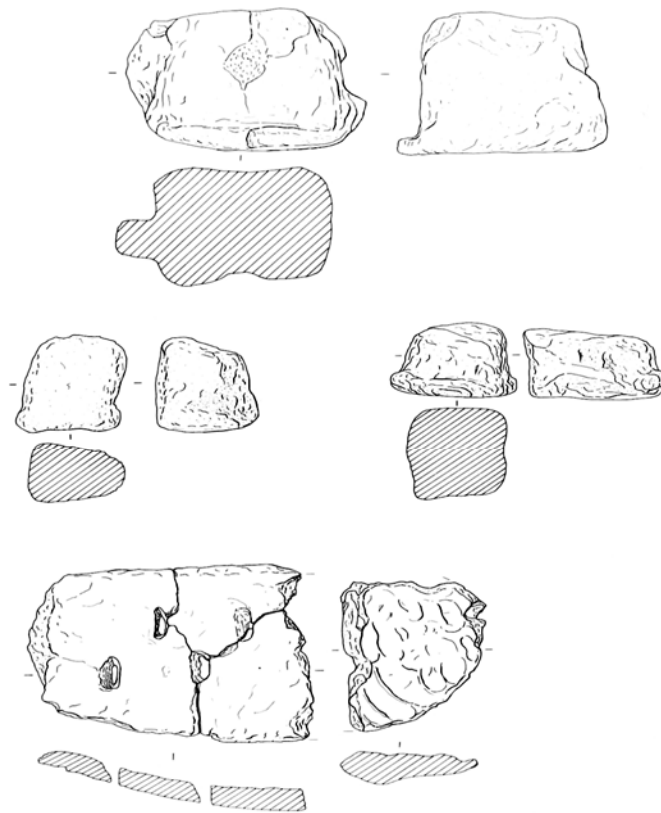
# Wherstead Kilns



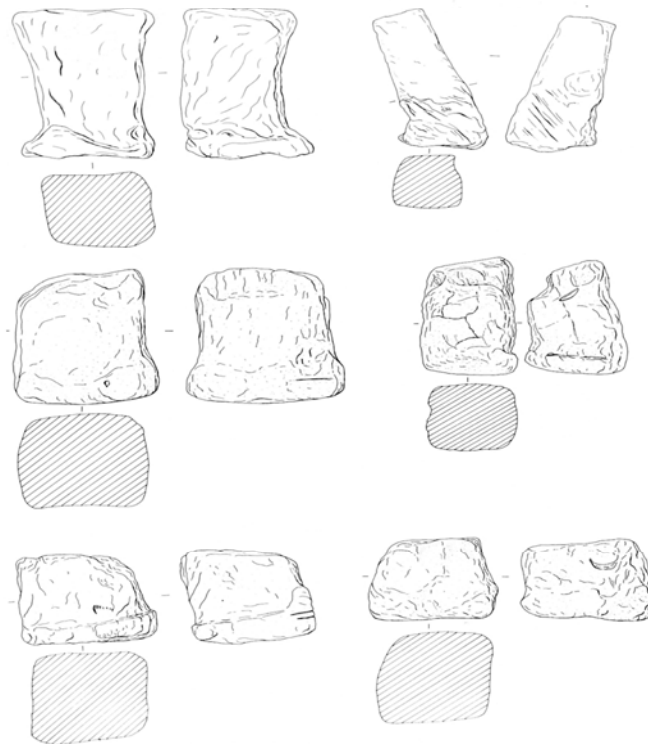
Early Roman Kilns Plan and Sections 1:40

Site plans and sections from Wherstead





Kiln furniture from Romano-British kiln 3 at West Stow. Scale 1:4



Kiln bricks from Romano-British kiln 3 at West Stow. Scale 1:4

Kiln furniture  
used to  
support the  
pots in the  
kiln, as seen  
in the West  
Stow kiln  
photograph



A reconstruction drawing of how a Romano British kiln may have looked and worked, the pots are stacked in the kiln and covered with turf and the fire started in the stoke hole