

98/22



LINDSEY ARCHAEOLOGICAL SERVICES

**Land off Meadow Lane,
North Cockerington, Lincolnshire**

NGR: TF 374 907

Site Code: NCM 98

Accn No.: 97.98

Archaeological Watching Brief

for

Mr and Mrs Dick

LAS Report No. 322

November 1998

Lincolnshire County Council
Archaeology Section

1 2. NOV 98

EVENT 418515
SOURCES 418233 418234
44510 4183365

Contents

List of Figures and Plates

Summary	1
Introduction	1
Site Location	1
Archaeological Background	1
The Watching Brief	2
<i>The Access Road</i>	2
<i>The Garage</i>	2
Conclusion	2
Acknowledgements	3
Contents of Site Archive	3
Context Summary	3
Figures	
Plates	

Figures

Fig. 1 Location of North Cockerington. Reproduced from the Ordnance Survey 1:10 000 with the permission of the Controller of HMSO. Crown Copyright. Licence No. AL 50424A

Fig. 2 Location of development showing existing boundaries

Fig. 3 A) Garage foundations B) House foundations showing major archaeological features

Fig. 4 A) South-east facing section of 102 and 104 B) South-east facing section of 105

Fig. 5 A) North-west facing section of 111 B) South east facing section of 108

Plates

Pl. 1 General shot of development looking north-west.

Pl. 2 Area of topsoil stripping looking north west.

Pl. 3 Looking west showing ditch (104) truncated by pit (102)

Pl. 4 Looking west showing ditch (105)

Pl. 5 Looking south showing pit (111)

Pl. 6 Looking south showing pit (114)

Pl. 7 Area Stripped for access road

Pl. 8 Looking north showing pit (108)

**Land off Meadow Lane, North Cockerington,
Louth, Lincolnshire
Watching Brief
NGR: TF 374 907
Site Code: NCM 98
Accn No 97.98**

appx N/28/1483/97

Summary

A watching brief was carried out during groundworks for the construction of a house and associated garage at North Cockerington, Lincolnshire. The watching brief revealed two ditches and three pits but no finds were recovered so it was impossible to determine the date or function of the features.

Introduction

Lindsey Archaeological Services was commissioned by Mr and Mrs Dick to carry out a watching brief during the excavations of foundations for a house and garage at Meadow Lane Lincolnshire. The watching brief was carried out in accordance with the general requirements of the Archaeology Section Lincolnshire County Council.

Site Location

The parish of North Cockerington lies 5km to the south of Louth on the dip slope of the Lincolnshire Wolds at about 13m O.D. North Cockerington is one of a line of settlements running south from Holton-le-Clay which have old English placenames. This was an area of dense settlement and the parish shapes are characteristically elongated.

The development lies on the east side of North Cockerington village which itself is located in the western part of the parish.

Archaeological Background

Cockerington is mentioned in the Domesday survey of 1086 where no distinction is made between North and South. There are no less than six manors (estates) formerly held by four Saxon lords in 1066 and held by four Norman lords in 1086 (Forster and Longley 1924, 3/30; 4/57-8; 26/20; 27/25; 40/18, 23). Around the two villages of North and South Cockerington there are extensive and well defined earthworks which were dated to 12th-18th Century.

Although earthworks were not observed on the development site, low earthworks were visible in the fields to the north and south and it is thought that the development plot lay within the medieval village.

The Watching Brief

The house and the attendant garage were stripped of turf using a 1.6m toothless ditching bucket, and in most of the area the stripping did not extend below the topsoil (Pl. 2). The stripped surface was inspected but no features or artefacts were observed.

The foundation trenches were excavated using a 0.75m toothed bucket. The excavated material was largely removed from the site, making it impossible to

examine the spoil removed from the foundation trenches. Also due to the weather the trenches rapidly became flooded making the bases of features difficult to see (Pl. 3).

Two ditches were observed during the excavation of the foundations, the first of which, **104**, ran north-east south-west across the site (Fig.4a). It was approximately 1m wide and 0.40m, the fill was a brown grey clay **103** with flecks of charcoal present through out the fill. It ran across the site where it was truncated by the pit **102** at the eastern end (Pl. 4 and 5). **104** was truncated at the western part by a small pit **111** which contained a grey brown clay.

A second ditch **105** (Pl. 5) ran in a west-east direction in the western corner of the foundations (Fig. 4b). It was difficult to see the full profile of the features as it was oblique to all the sections it was observed in. The ditch contained a brown/grey clay **106** but no artefacts were found.

A pit **111** was discovered in south-west corner of the site. It was approximately 1.60m wide and 1.2m deep with rounded sides and contained a grey brown clay **113** overlain by a redeposit a natural orange clay **112** (Pl. 6). This pit was observed in both sides of the trench but did not extend to the foundation trenches further north.

A large pit **114** or backfilled depression was located in the eastern part of the site which was at least 7 by 8m and extended to a depth of 1.20m. It was filled with a dark brown clay silt **115**, the surface of which contained some fragments of brick and may represent a levelling deposit.

The Access Road

An area from the main road to the garage was stripped for the creation of an access road. Here turf was removed but over most of the area excavation did not penetrate the topsoil, and no features or artefacts were recovered from this operation.

The Garage

The foundations were excavated with a 0.75m toothed bucket to a depth of between 1m and 1.2m. Only one feature was revealed during this operation. This was a large pit whose visible extent was 2.5m wide and 1.2m deep. It was filled with a deposit of dark grey brown material. At its base was a layer of coarse blocks of limestone 0.10-0.20m maximum dimension.

Conclusion

The watching brief revealed several features but no dating evidence was forthcoming so it is impossible to determine the date or function. although it is that they represent a continuation of the archaeological features represented by earthworks in the surrounding fields. It is likely that this field has been levelled at some point, which would have removed any earthworks.

Acknowledgements

LAS would like to thank the Archaeological Section Lincolnshire County Council for help and advice throughout the project.

Contents of Site Archive

1 sheet of A4 drawing film

1 context register

13 context sheets

Photographs No's 98/26 (8-36)

Appendix A
Context Summary

Context No.	Type	Description
100	Topsoil	Dark brown clay
101	Cut	Pit
102	Layer	Natural yellow clay
103	Fill of 104	Brown/grey clay
104	Cut	Pit
105	Cut	Ditch?
106	Fill of 105	Brown grey clay
107	Fill of 102	Brown/grey clay
108	Cut	Pit
109	Fill of 108	Dark brown clay
110	Fill of 108	Dark brown clay containing angular lst
111	Cut	Pit
112	Fill of 111	Grey brown silty clay
113	Fill of 111	Yellow clay
114	Cut?	Pit
115	Fill of 114	Dark brown clay

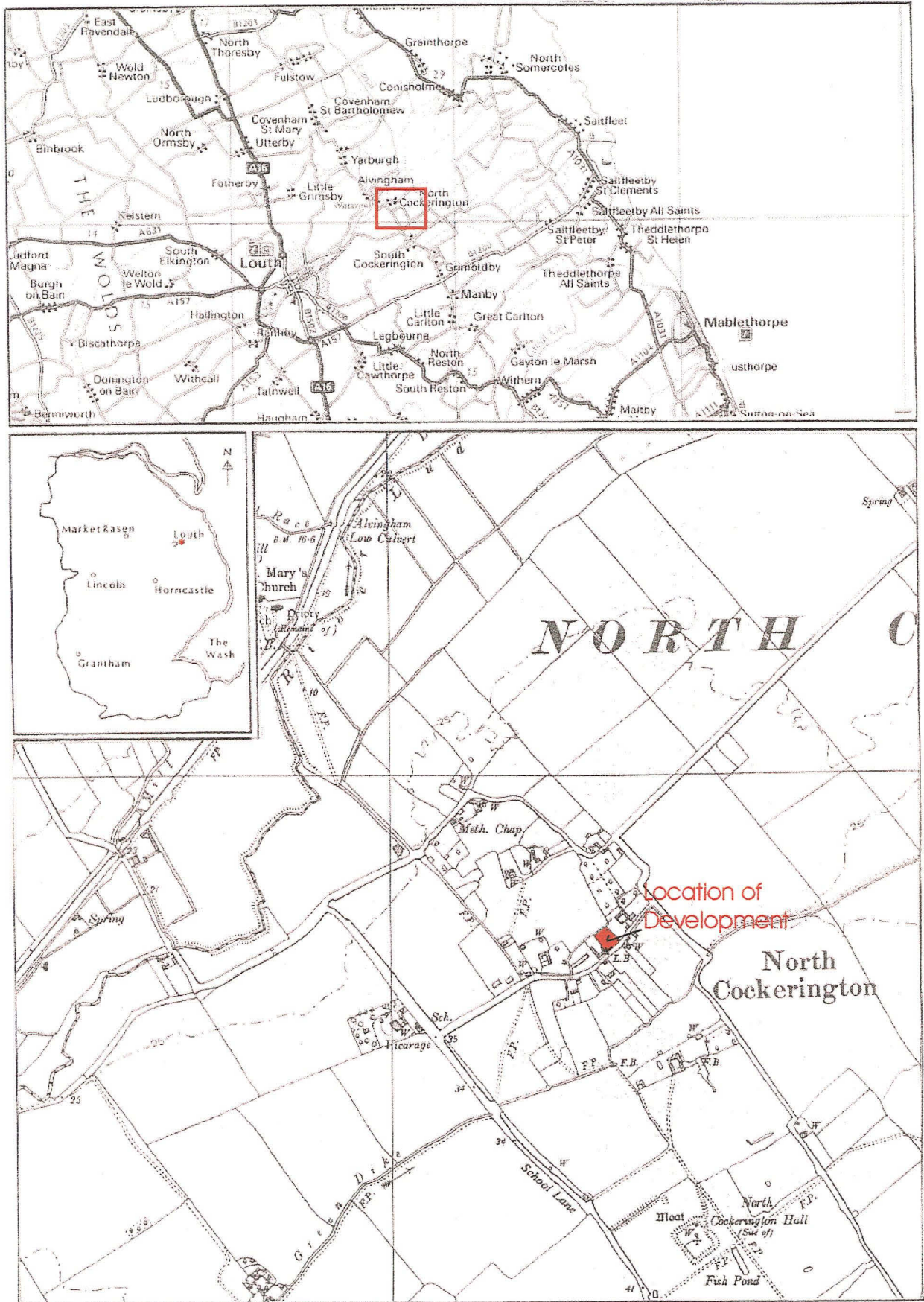


Fig 1. Location of North Cockerington. Reproduced from the Ordnance Survey 1:10 000 map with the permission of the Controller of HMSO. Crown Copyright No. AL 50424A

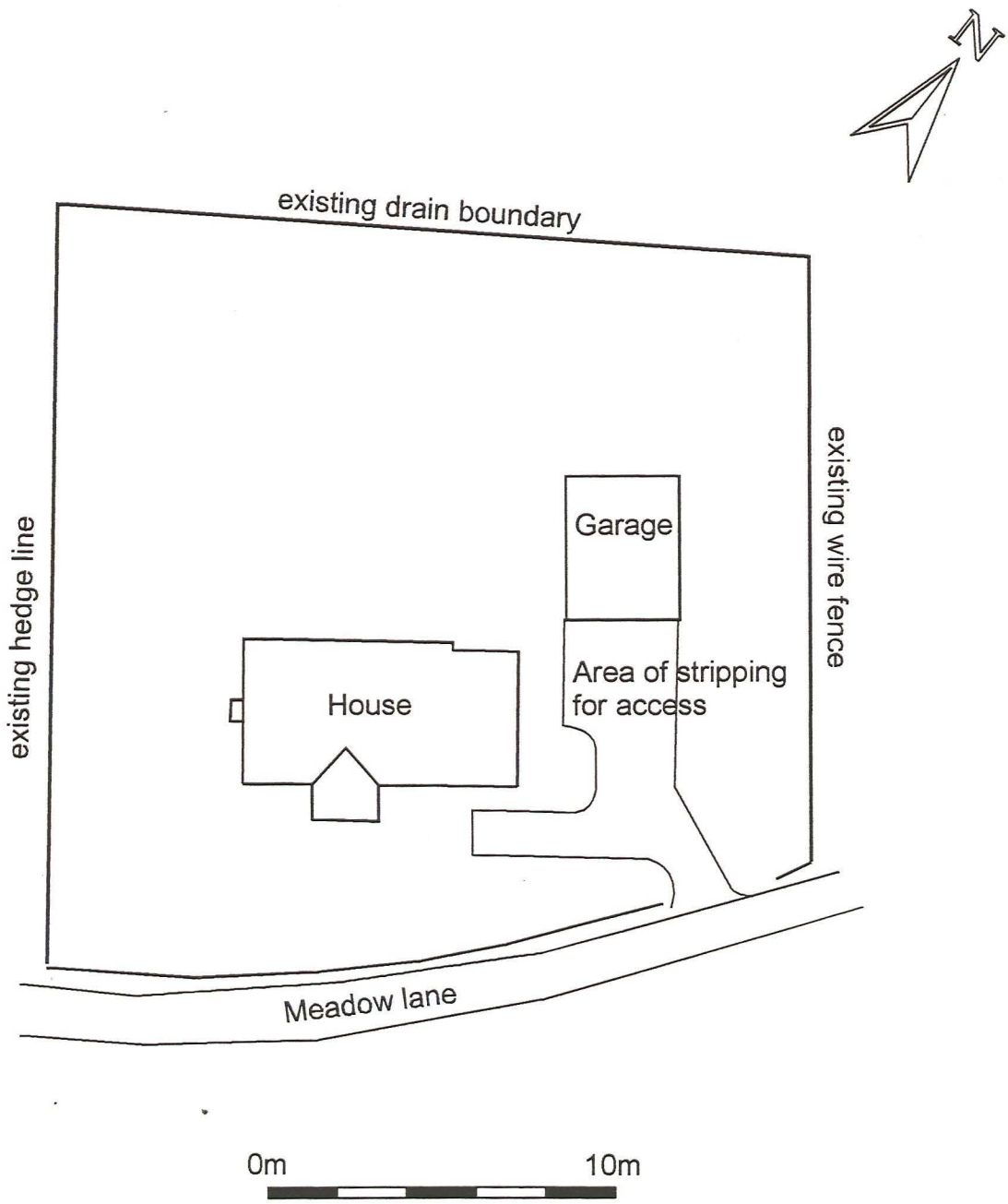
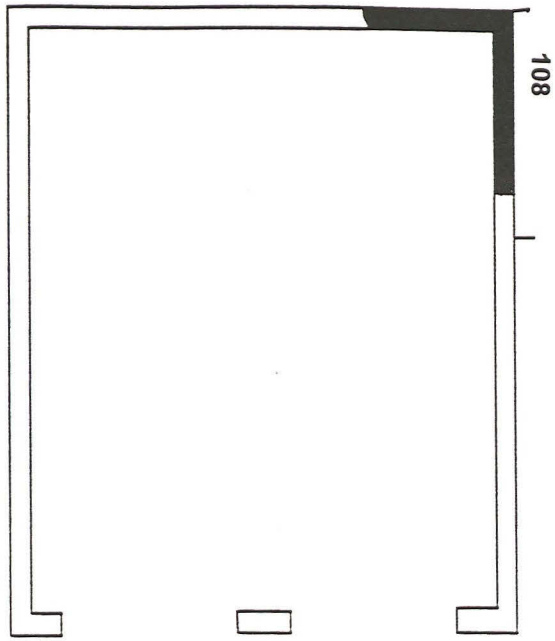


Fig.2 Location of development

A)



108

B)

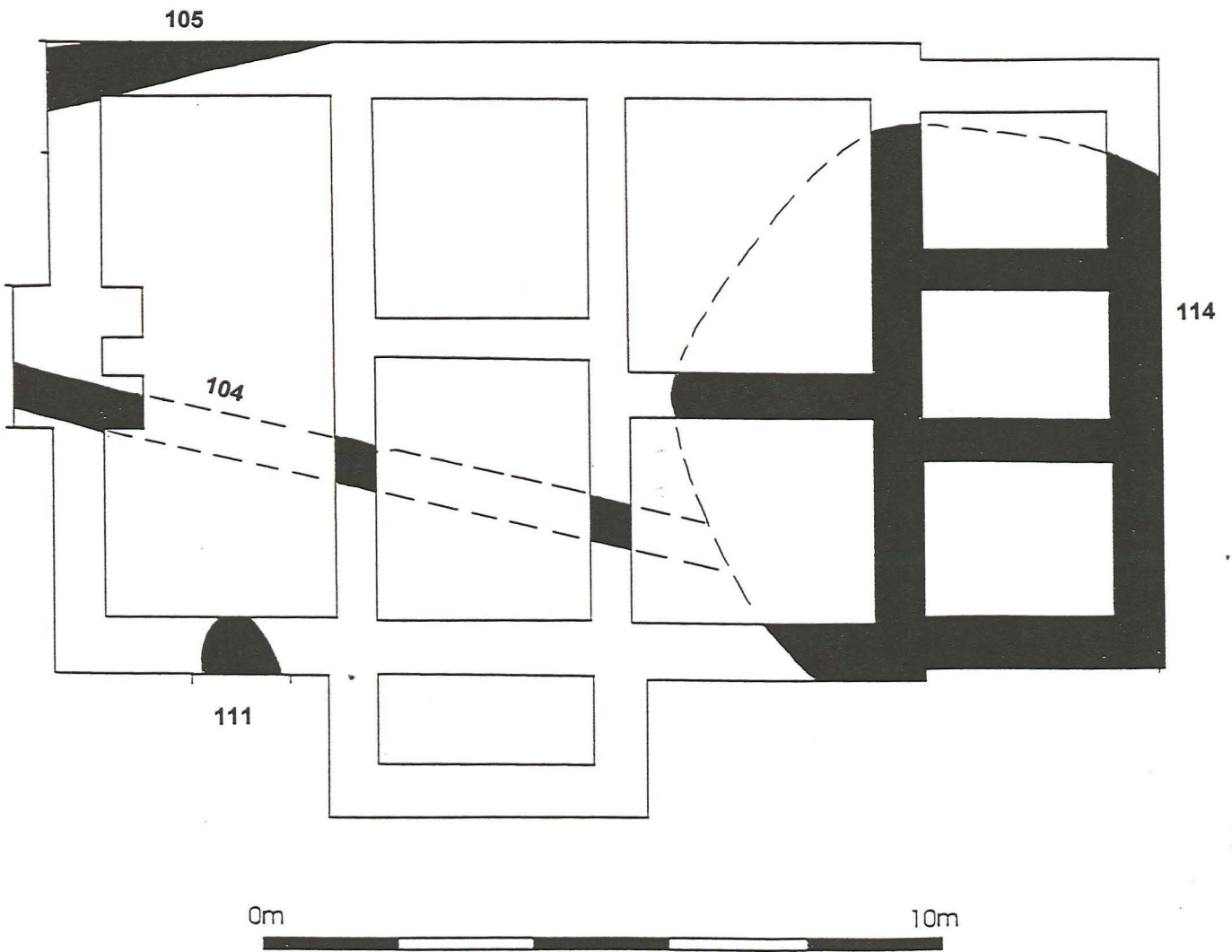
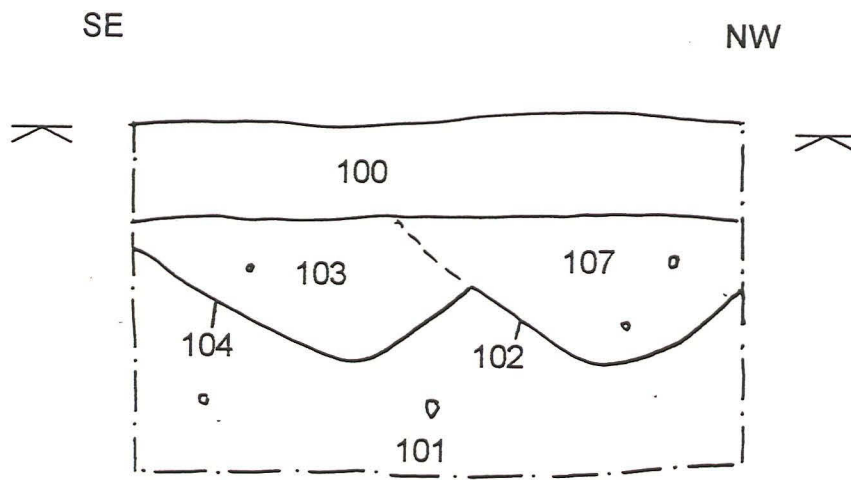
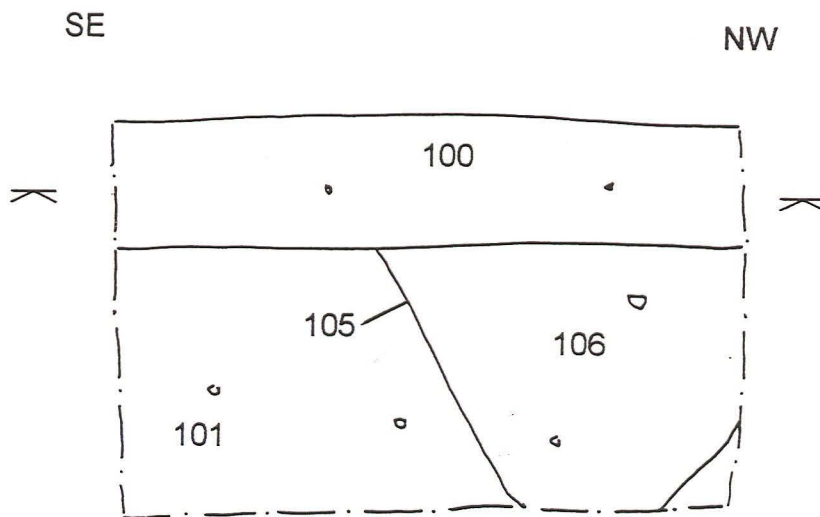


Fig.3 A) Garage foundations B) House Foundations showing archaeological features

A)



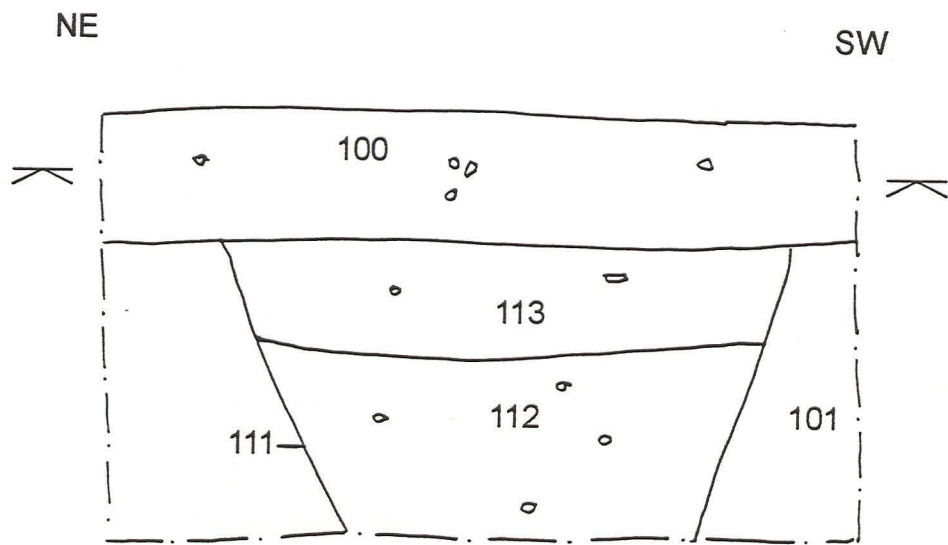
B)



0m  1m

Fig. 4 A) North-east facing sections of 102 and 104 B) North-east facing section of 105

A)



B)

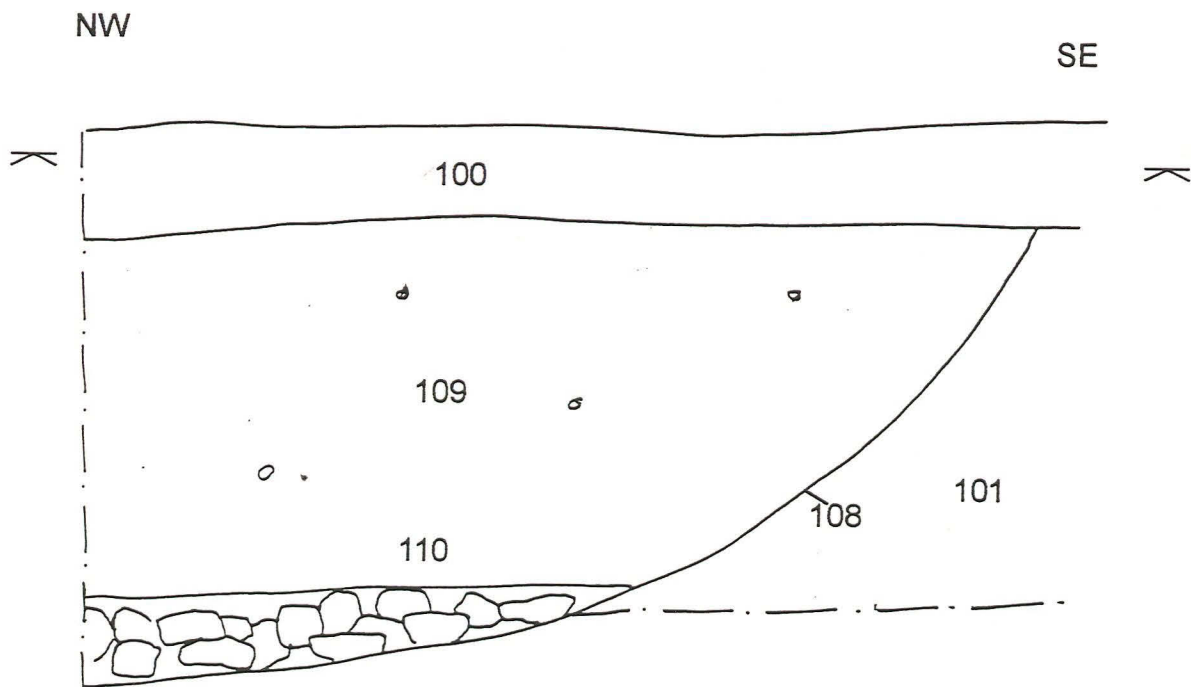


Fig. 5 A) North-west facing section of 111 B) South east facing section of 108



Pl. 1 General shot of development looking north-west.

Pl. 2 Area of topsoil stripping looking north west.





Pl. 3 Looking west showing ditch (104) truncated by pit (102)

Pl. 4 Looking west showing ditch (105)





Pl. 5 Looking south showing pit (111)

Pl. 6 Looking south showing pit (114)





PI. 7 Area Stripped for access road

PI. 8 Looking north showing pit (108)

