

M2/9

Standing Building Appraisal Survey

No's 9 & 11 East Street, Crowland, Lincolnshire

PART II -Figures & Plates

NGR TF 2405 1025

prepared by

John Samuels Archaeological Consultants

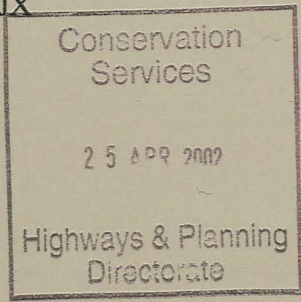
on behalf of

M Parker & Sons

St Johns Road

Spalding

Lincolnshire PE11 1JX



JSAC 865/02/02b

March 2002



THE MANOR SOUTH STREET NORMANTON-ON-TRENT NEWARK NOTTINGHAMSHIRE NG23 6RQ
 TELEPHONE 01636 821727 FAX 01636 822080 E-MAIL jsac@btconnect.com



Certificate Number 1967/99

Event LI 2933

Source W17632

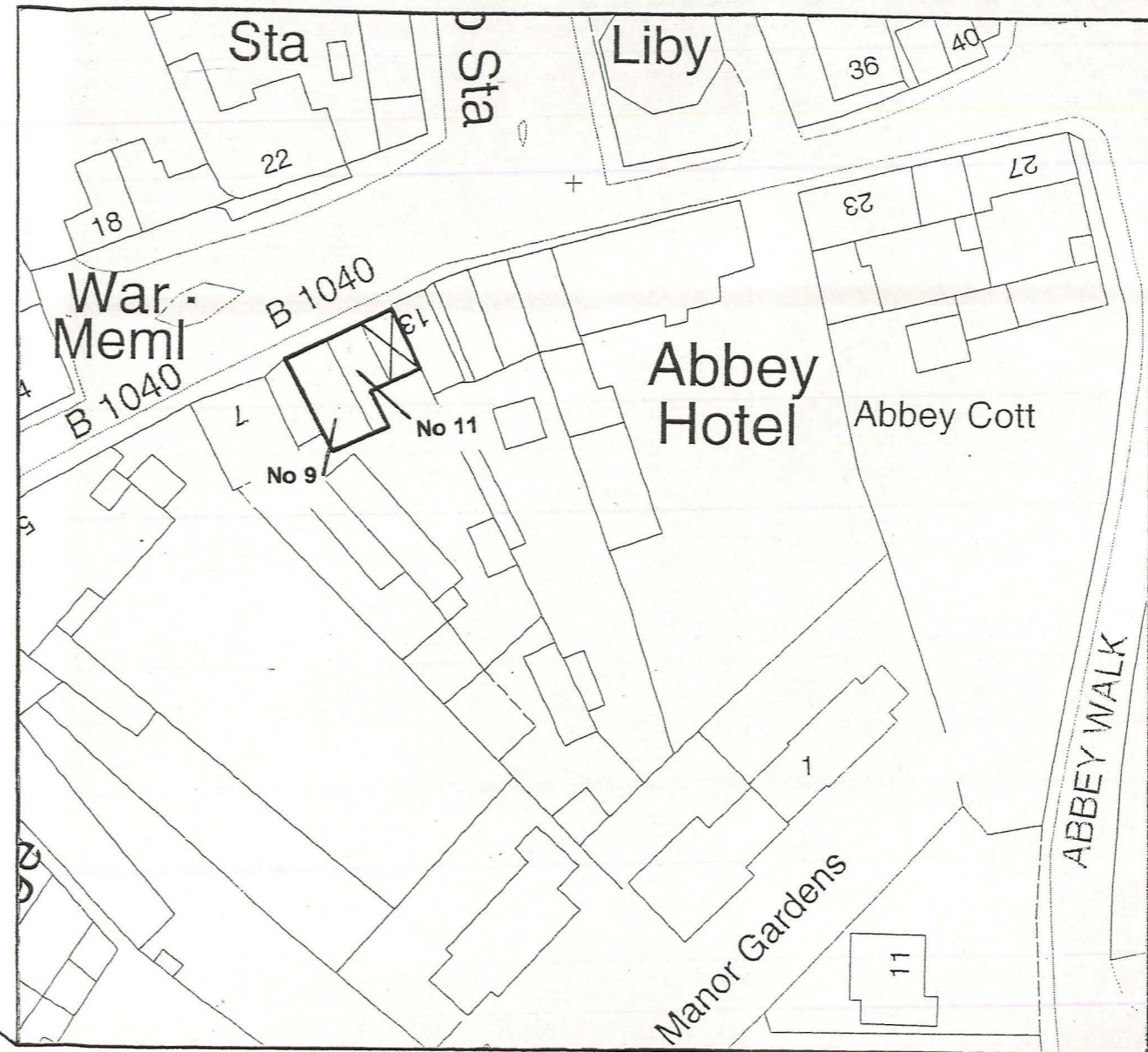
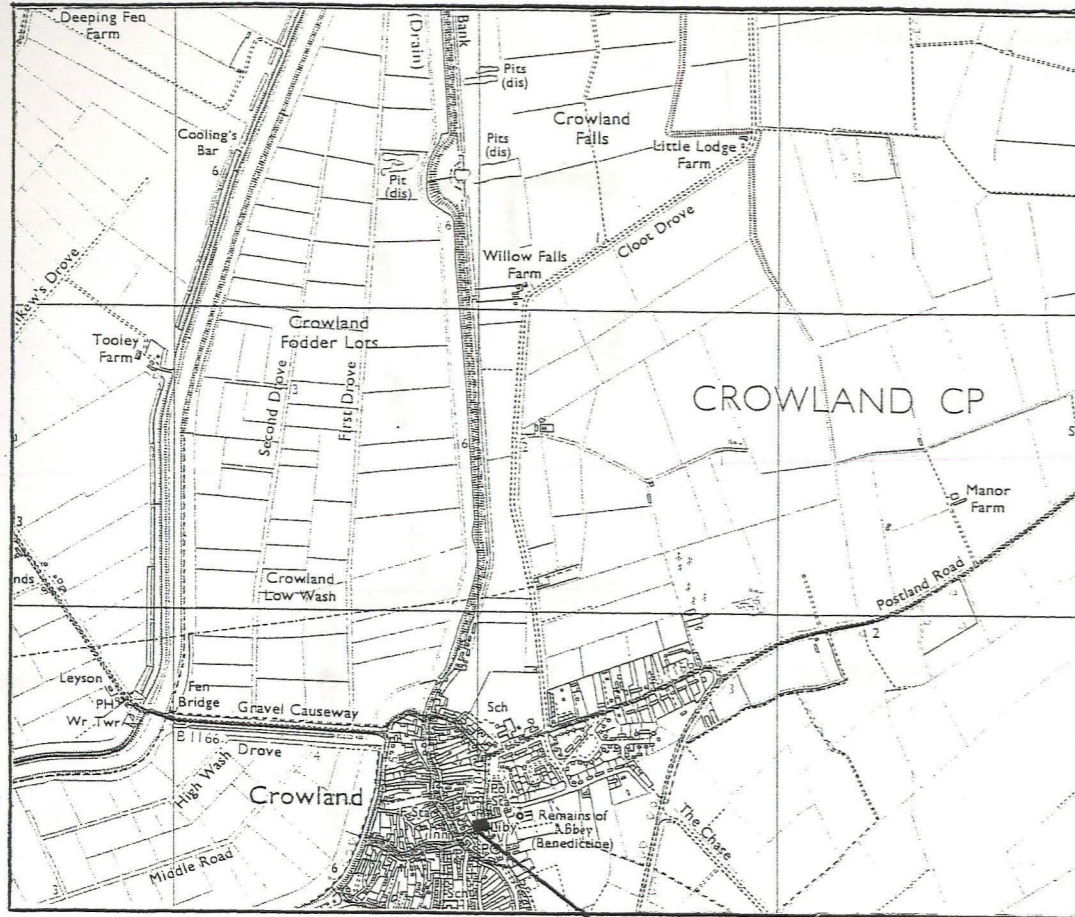
Non W182752

23767 *Standing Building Appraisal:*

No's 9 & 11 East Street, Crowland, Lincs

Contents

Figures	3
Figure 1: Site Location	3
Figure 2: Plans at Ground and First Floor levels showing room coding	4
Figure 3: North Elevation (below eaves) indicating principal architectural detailing	5
Figure 4: Frame C: East (upper) face	6
Figure 5: Schematic plans showing possible development	7
Plates	8
Plates 1-4	8
Plates 5-8	9
Plates 9-12	10
Plates 13-16	11
Plates 17-20	12
Plates 21-24	13
Plates 25-27	14
Plates 28-31	15
Plates 32 & 33	16



Note: Map based upon Ordnance Survey with the sanction of the Controller of H.M. Stationary Office, Crown Copyright Reserved.

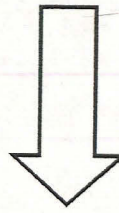
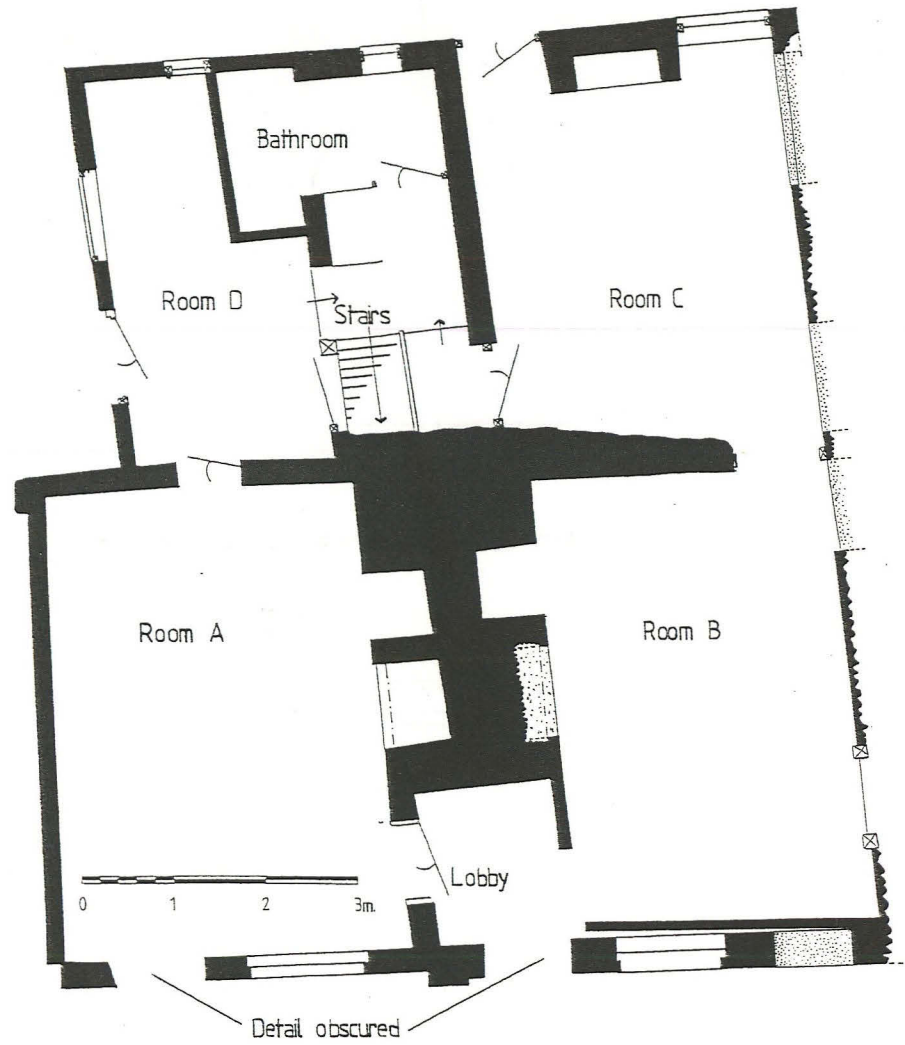
Licence No: AL 100020447

JSAC 865/02/02

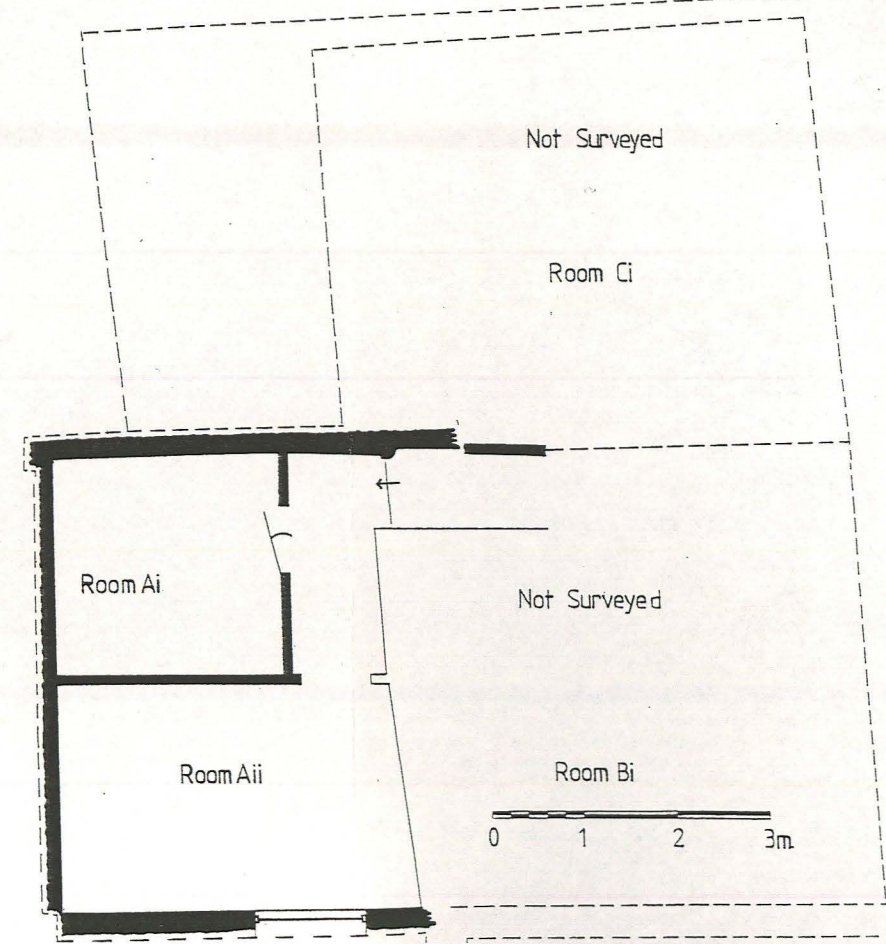
1

JSIAC JOHN SAMUELS ARCHAEOLOGICAL CONSULTANTS	
Title	Site Location
Contract	JSAC 865: 9-11 East Street
Scale	NTS -based on OS mapping
Date	February 2002

GROUND FLOOR

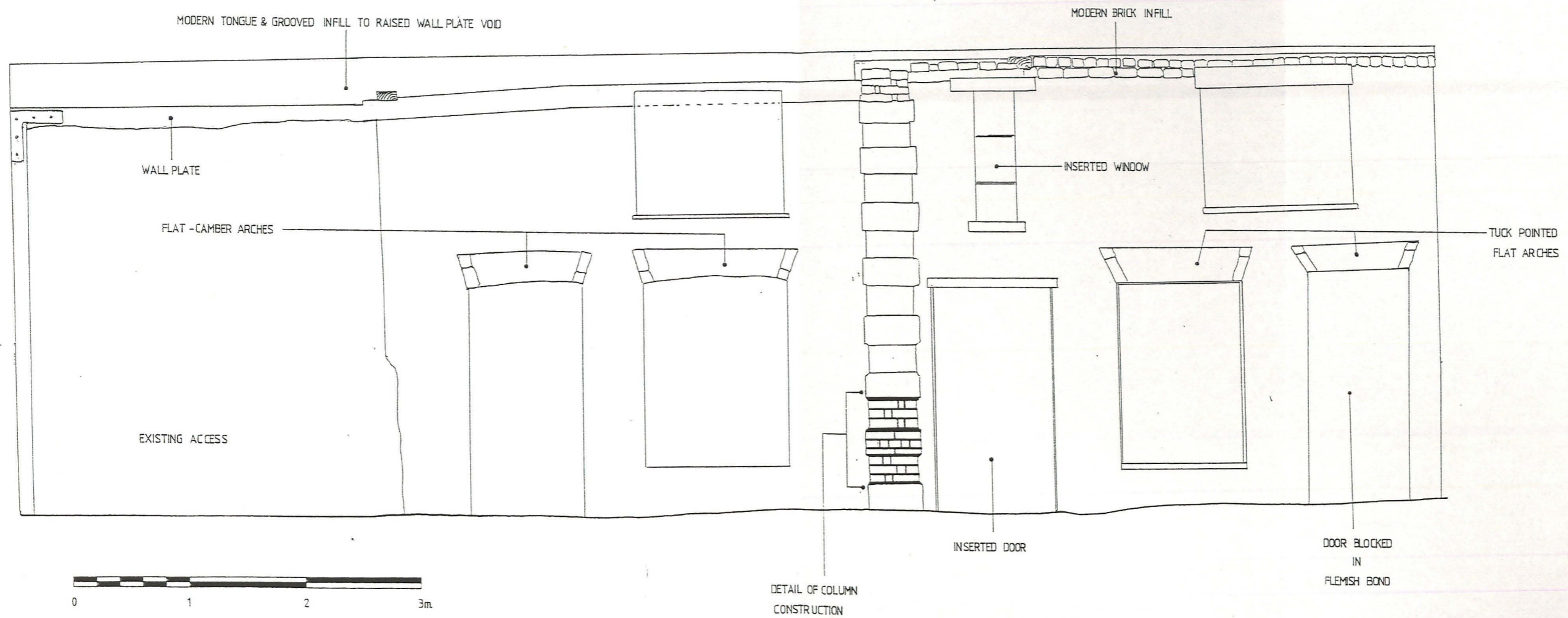


FIRST FLOOR

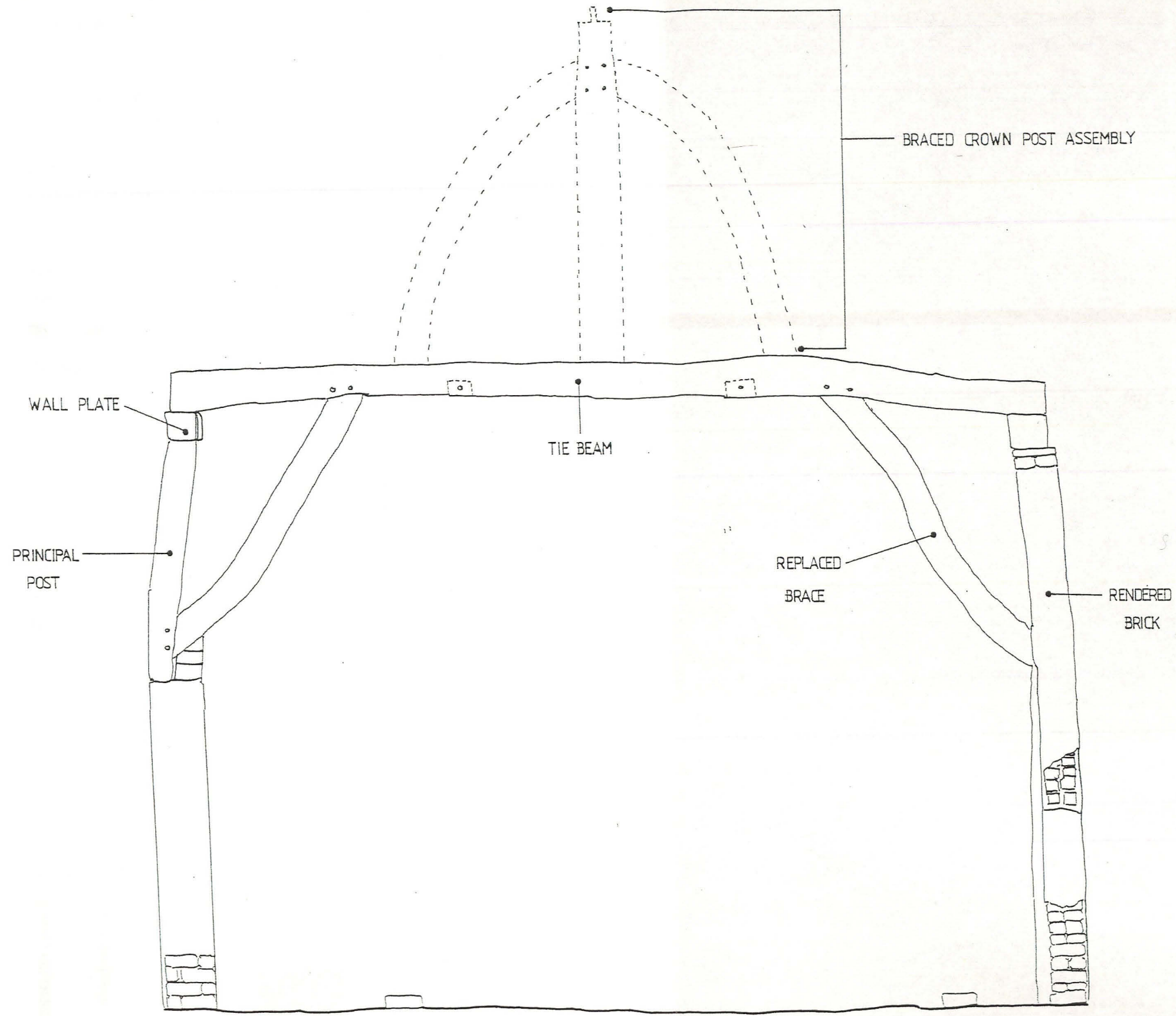


JSAC 865/02/02

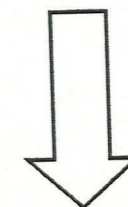
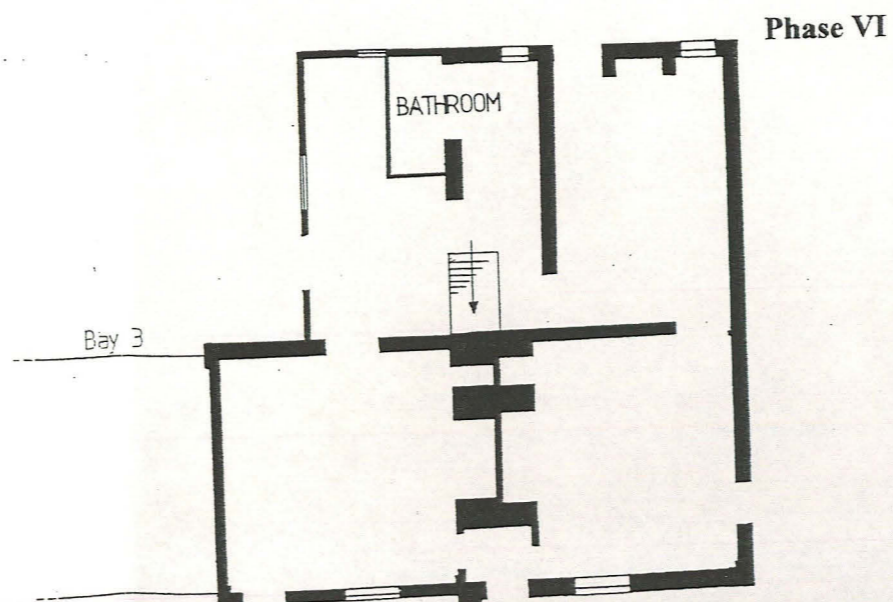
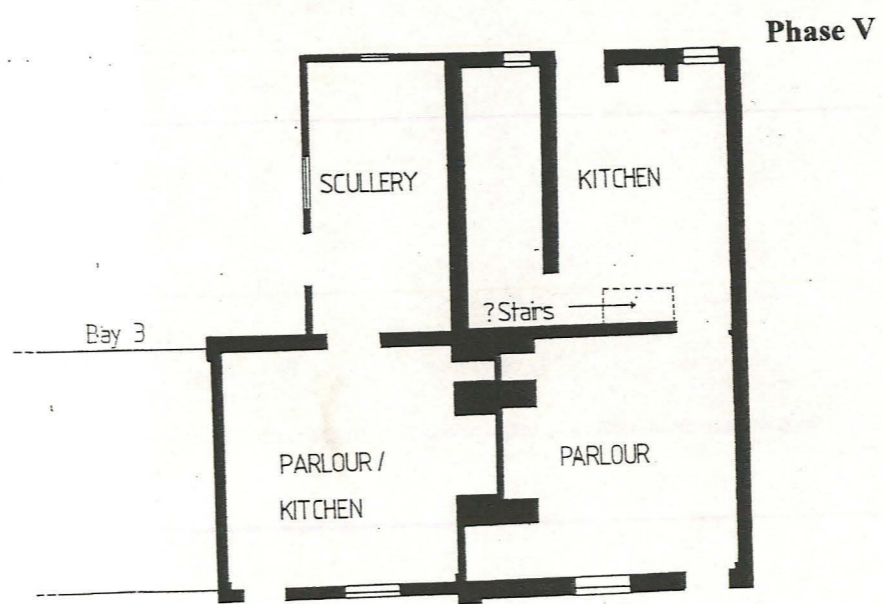
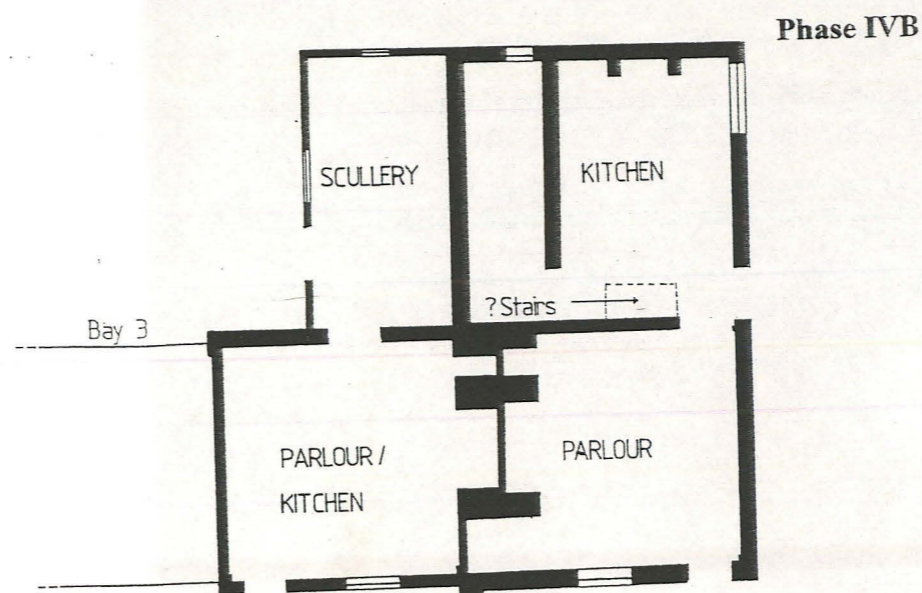
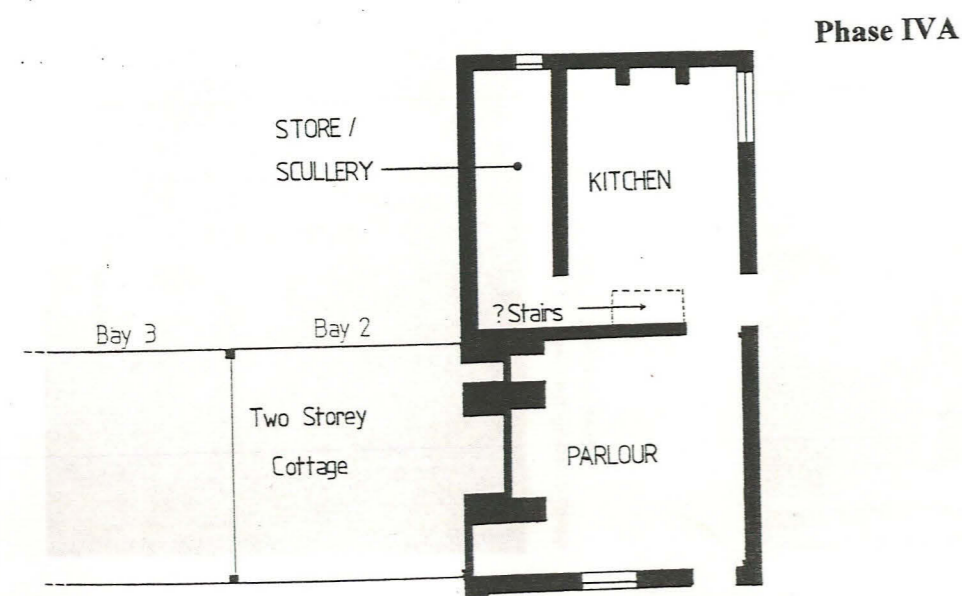
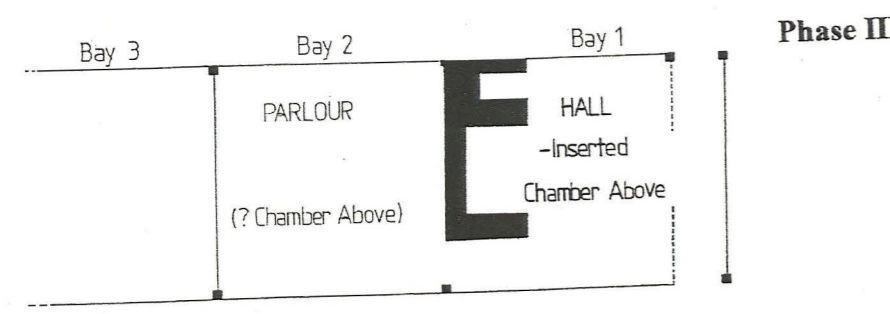
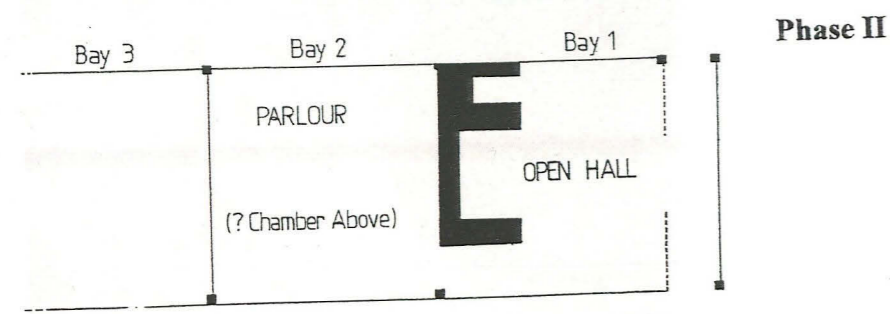
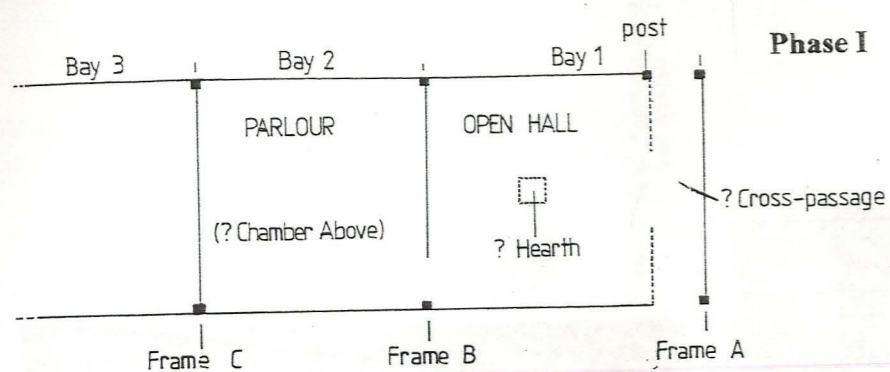
JISIAIC JOHN SAMUELS ARCHAEOLOGICAL CONSULTANTS	
Title	Plans at Ground and First Floor levels showing Room Coding
Contract	JSAC 865: East Street, Crowland, Lincs
Scale	As Drawn
Drawn	Forbes Marsden
Date	March 2002



JSAC JOHN SAMUELS ARCHAEOLOGICAL CONSULTANTS	
Title	North Elevation (below eaves) indicating principal architectural detailing
Contract	JSAC 865: East Street, Crowland, Lincs
Scale	As Drawn
Drawn	Forbes Marsden
Date	March 2002



JISIAIC JOHN SAMUELS ARCHAEOLOGICAL CONSULTANTS	
Title	Frame C: East (upper) Face
Contract	JSAC 865: East Street, Crowland, Lincs
Scale	As Drawn
Drawn	Forbes Marsden
Date	March 2002



JISIAIC JOHNN SAMUELS ARCHAEOLOGICAL CONSULTANTS	
Title	Schematic Plans Showing Possible Development
Contract	JSAC 865: East Street, Crowland
Scale	NTS
Drawn	Simon Johnson
Date	March 2002



Plate 1: North elevation of Room C showing stone pinning. Stud visible above top right corner of door to Room B on the left of frame



Plate 3: Detail of change in build of stone pinning



Plate 2: Detail of bridled-scarf joint to rail topping stone pinning. Doorframe of access through to Room B on the left of frame



Plate 4: Frame C, internal detail of tie-beam and wall plate, northeast corner of Room Aii



Plate 5: Wall plate and repair, southeast corner of Room Ai



Plate 6: Room Bi, southwest corner, Frame A showing principal post, wall plate, tie-beam and probable principal rafter assembly



Plate 7: Frame showing bulge in the render of the northwest corner of Room Bi, indicating the possible re-use of a jowl headed post

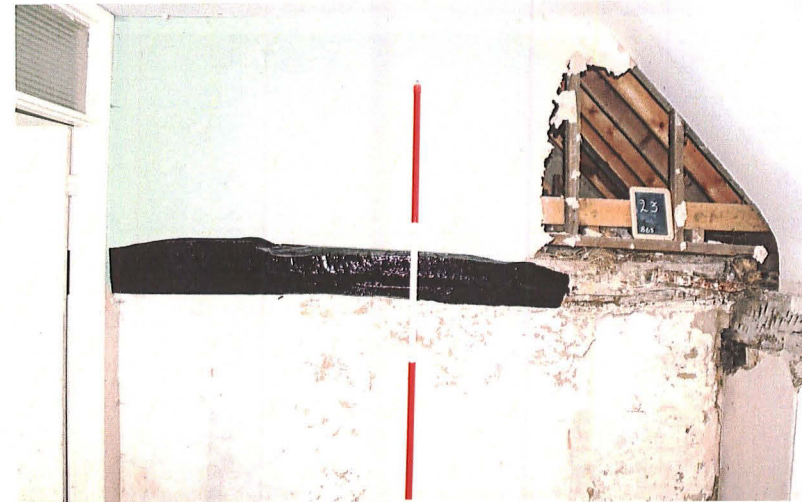


Plate 8: Room Aii, showing repaired tie-beam of Frame B and wall plate assembly

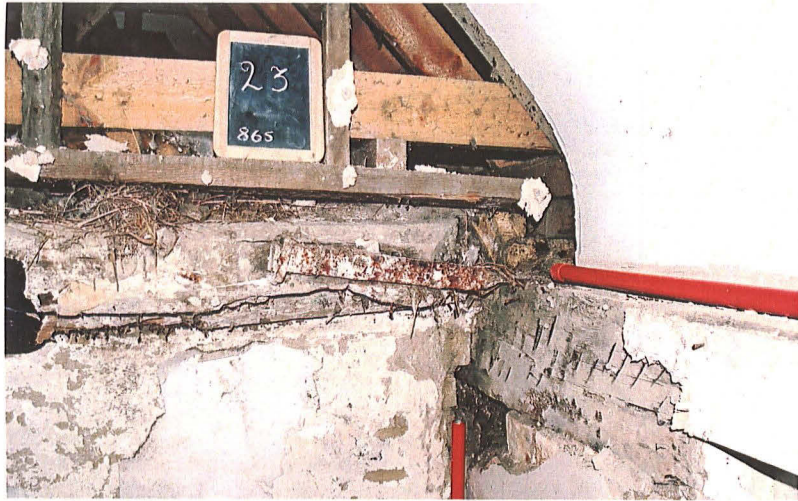


Plate 9: As Plate 8, closer detail showing iron strap repair



Plate 10: Blacked brace and tie-beam, Frame C, visible in east wall of Room Aii



Plate 11: Frame C, principal post, brace, wall plate and tie beam showing upper-face



Plate 12: Frame C, frame taken from East Street showing replaced brace and tie-beam

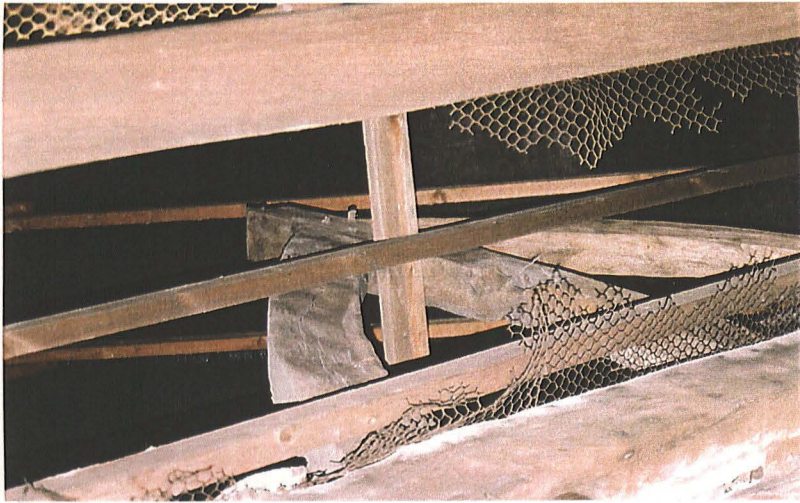


Plate 13: Frame C, showing crown post and tension braces

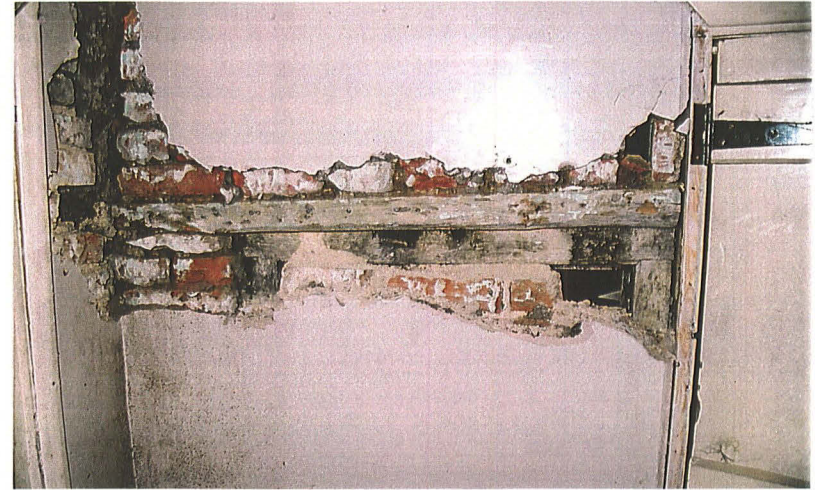


Plate 15: Room D, north wall, wooden rail/lintel over pegged doorframe



Plate 14: Room Bi, south wall, showing wall plate and stud with area of possible original infill to left of stud (partially obscured by Phase VI block work)



Plate 16: Principal post of Frame B exposed at top of current stair



Plate 17: South wall plate over Bay 3 showing mortices for wooden mullioned window



Plate 19: Room Bi; bases of Phase III stud partition



Plate 18: Room B; Phase II brick chimney showing oak lintel



Plate 20: Room Bi; top of Phase III stud partition showing hand-split lath and plaster



Plate 21: Rear of Phase III stud partition seen through opening-up in Room Aii



Plate 23: Detail of rusticated pier showing decayed wall plate. The timber with mortice is not *in situ*



Plate 22: North elevation



Plate 24: South elevation



Plate 25: Ceiling joists of Room C showing ovolo scratch moulding



Plate 26: Roof detail of Phase IV/A/B



Plate 27: Thatch course or fleeking seen through doorway through to Room Ci



Plate 28: Detail of flat-camber window arch of No 11 East Street



Plate 30: Detail of Phase IVB extension to No 11 showing '1957' plastic repair

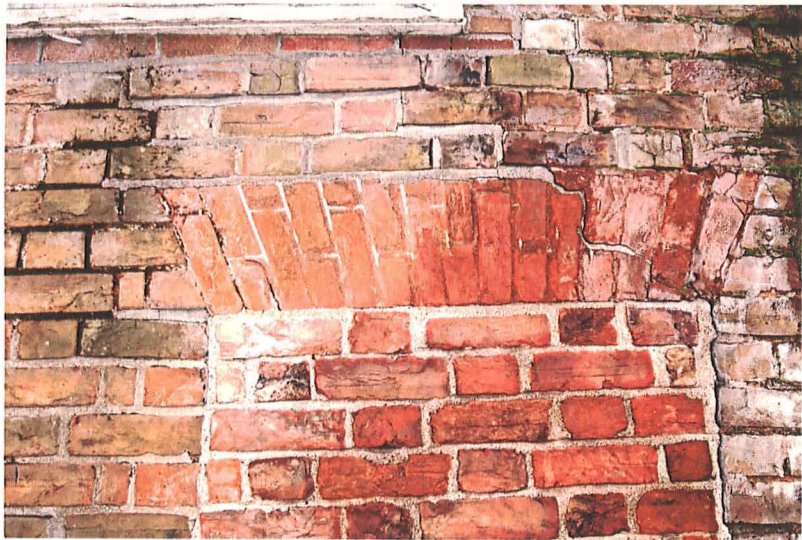


Plate 29: Detail of flat door arch of No 9 East Street



Plate 31: Detail of flat arch to window of No 9 showing tuck pointing



Church Street, Crowland

VALENTINE'S SERIES

Plate 32: Local postcard showing East Street prior to the construction of the war memorial. No 11 is on the right hand side as having a thatched roof with a simple ridge



H 101

Crowland Abbey and War Memorial

Plate 33: A later postcard taken after construction of the war memorial and showing details of both cottages. The roof appears to have been re-thatched with a more decorative ridge. The windows at first floor level appear to be eight paned; and a window is shown where the current central door has been inserted