

~~KD JB~~

m5/02

**CONDITIONS SURVEY  
A158 BURGH LE MARSH BYPASS,  
BURGH LE MARSH  
LINCOLNSHIRE  
(BMBE04)**



**A P S**  
ARCHAEOLOGICAL  
PROJECT  
SERVICES



**CONDITIONS SURVEY  
A158 BURGH LE MARSH BYPASS,  
BURGH LE MARSH  
LINCOLNSHIRE  
(BMBE04)**

Work Undertaken For  
Jacobs Babtie  
on behalf of  
Lincolnshire County Council



Lincolnshire  
-IN PARTNERSHIP-  
**Babtie**



February 2005

Report Compiled by  
Mark Williams

National Grid Reference: TF 4727 6708 - TF 5162 6471

A.P.S. Report No. 34/05

**ARCHAEOLOGICAL PROJECT SERVICES**



### Burgh Le Marsh Bypass Condition Survey.

Condition survey shows the ground conditions before the excavation and the ground conditions after the excavation and backfilling was completed.

Trench no.	Notes	Direction of photo	Plate No.
Trench 1	Dry conditions on excavations and back filling, very low crop visible	Looking south	Pl. 1
Trench 2	Dry conditions on excavation and back filling, low crop on field	Looking south	Pl. 1
Trench 3	Dry conditions on excavation. Low crop visible.	Looking west	Pl. 2
Trench 4	Dry conditions on excavation and backfilling	Looking northwest	Pl. 2
Trench 5	Dry conditions on excavation and backfilling, no crop visible in the field	Looking east	Pl. 3
Trench 6	Dry conditions on both the excavation and backfilling of the trenches	Looking west	Pl. 3
Trench 7	Dry conditions – rough ground	Looking northeast	Pl.4
Trench 8	Dry conditions, rough pasture.	Looking southeast	Pl. 4
Trench 10	Dry conditions, low crop	Looking north	Pl. 5
Trench 11	Dry conditions, low crop	Looking southwest	Pl. 6
Trench 12	Dry conditions.	Looking southwest	Pl.6
Trench 13	Dry condition. Low crop	Looking southwest	Pl. 7
Trench 14	Dry conditions. Low crop	Looking northwest	Pl. 7
Trench 15	Dry conditions, low crop	Looking east	Pl. 8
Trench 16	Dry conditions, low crop	Looking east	Pl. 8
Trench 17	Dry conditions, low crop	Looking east	Pl. 8
Trench 18	Dry conditions, low crop	Looking east	Pl. 8
Trench 19	Dry conditions, low crop	Looking east	Pl. 8
Trench 20	Dry conditions, low crop	Looking east	Pl. 8
Trench 21	Dry conditions, rough grass	Looking north	Pl. 9
Trench 22	Dry conditions, low crop	Looking northeast	Pl. 9
Trench 23	Dry conditions, rough grass	Looking	Pl. 10
Trench 24	Dry conditions, rough grass	Looking east	Pl. 10
Trench 25	Dry conditions, rough grass	Looking north	Pl. 11
Trench 26	Dry conditions, rough grass	Looking southwest	Pl. 11
Trench 27	Not excavated		
Trench 28	Dry conditions, Trench turfed and recovered)	Looking west	Pl. 12
Trench 29	Dry conditions, Trench turfed and re turfed	Looking north	Pl. 13
Trench 30	Dry conditions rough pasture, some flooding but relatively dry on back filling	Looking southeast	Pl. 13
Trench 31	Dry conditions some flooding, rough pasture, turfed and re turfed.	Looking southwest	Pl. 14



Trench no.	Notes	Direction of photo	Plate No.
Trench 32	Dry conditions, turfed and re-turfed.	Looking north	Pl. 14
Trench 34	Dry condition, low crops	Looking west	Pl. 15
Trench 35	Dry conditions, low crops	Looking south	Pl. 16
Trench 36	Dry conditions turfed as re turfed	Looking north west	Pl. 17
Trench 38	Dry conditions, turfed and re turfed	Looking west	Pl. 18
Trench no.	Notes	Direction of photo	Plate No.
Trench 1	Dry conditions on excavations and back filling, very low crop visible	Looking south	Pl. 1
Trench 2	Dry conditions on excavation and back filling, low crop on field	Looking south	Pl. 1
Trench 3	Dry conditions on excavation. Low crop visible.	Looking west	Pl. 2





Trench 1, Pre excavation  
(looking north)

Trench 3, pre excavation  
(looking north east)



Trench 1, Post excavation  
(post excavation)



Trench 2, Pre excavation  
(looking south)



Trench 2, post excavation  
(looking north)





Trench 3, pre excavation  
(looking north east)



Trench 3, Post excavation  
(looking west)



Trench 4, pre excavation



Trench 4 post excavation





Trench 5, Pre excavation  
(looking east)



Trench 5, Post excavation  
(looking east)



Trench 6, Pre excavation  
(looking east)



Trench 6, Post excavation  
(looking west)





Trench 7, Pre excavation  
(looking northeast)



Trench 7, post excavation  
(looking southwest)



Trench 8, Pre excavation  
(looking southeast)



Trench 8 post excavation  
(looking southeast)





Trench 10 pre excavation  
(looking north)



Trench 10 post excavation  
(looking north)



Trench 13, Pre excavation (looking south west)



Trench 11, Pre excavation  
(looking south east)



Trench 11, Post excavation  
(looking south east)



Trench 12, Pre excavation  
(looking north west)



Trench 12, Post excavation  
(looking south east)





Trench 13, Pre excavation (looking south west)



Trench 13, Post excavation (looking southwest)

Trench 14, Pre excavation (looking northwest)



Trench 14, Post excavation (looking northwest)





Trench 15-16, Pre excavation  
(looking east)

Trench 15 (below left) looking east and 16  
(below right) looking east.



Trench 18-20, Pre excavation  
(looking east)

Trench 18, (below left) looking east and 19-20  
(below right) looking east.







Trench 21, Pre excavation  
(looking north)

Trench 23, Pre excavation  
(looking west)



Trench 21, Post excavation  
(looking north)



Trench 22, Pre excavation  
(looking north)



Trench 22, Post excavation  
(north east)

Trench 24, Pre excavation  
(looking east, Trench 22 visible  
in background)





Trench 23, Pre excavation  
(looking west)



Trench 23, post excavation  
(looking east)

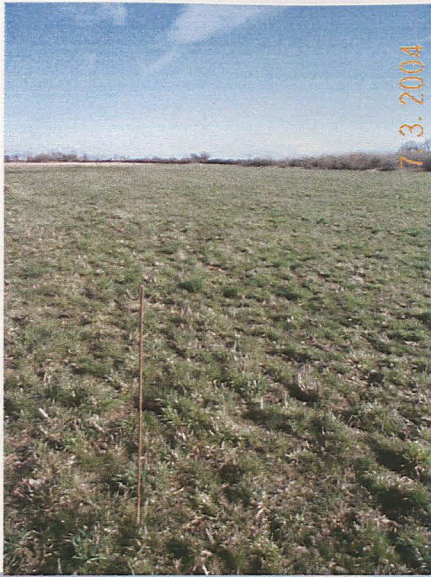


Trench 24, Pre excavation  
(looking east)



Trench 24 Post excavation  
(looking east), Trench 23 visible  
in background





Trench 25, Post excavation  
(looking north)



Trench 25, Post excavation  
(looking northeast)



Trench 26, Post excavation  
(looking southwest)



Trench 26, post excavation  
(looking southwest)





Trench 28 pre excavation (looking west)



Trench 28 post excavation (looking east)

Plate 12, Trench 28

Plate 13 trenches 29 and 30





Trench 29 Pre excavation  
(looking north)



Trench 29, Post excavation  
(looking west)



Trench 30, Pre excavation  
(looking west)



Trench 30, post excavation  
(looking south east)





Trench 34, Pre excavation  
(looking northwest)

Trench 31 Pre excavation  
(looking north) (see previous for  
post excavation)



Trench 31 Post excavation  
(looking southwest)

Trench 34, Post excavation  
(looking northwest)



Trench 32, Post excavation  
(looking north)





Trench 34, Pre excavation  
(looking northwest)



Trench 34, Post excavation  
(looking northwest)





Trench ,34-35 pre excavation  
Looking north east



Trench 34 Post excavation  
(looking west)



Trench 35 Post excavation  
(looking south)

Plate 16, Trenches 34 and 35

Plate 17, Trench 36 (looking E)





Trench 36 looking NE Pre ex



Trench 36 post ex

Plate 17, Trench 36 (looking E)





Trench 37, pre ex



Trench 37, Post ex  
(looking west)



Trench 38, below left pre ex, post ex below right