



**Northamptonshire  
County Council**

---

# Northamptonshire Archaeology

**An archaeological watching brief  
on land at Chapel Yard, North Street,  
Stamford, Lincolnshire  
July 2004**



David Leigh  
March 2005  
Report 05/041  
Accession No: LCNCC: 2005.55

---

**Northamptonshire Archaeology**  
2 Bolton House  
Wootton Hall Park  
Northampton NN4 8BE  
w. [www.northantsarchaeology.co.uk](http://www.northantsarchaeology.co.uk)  
t. 01604 700493/4  
f. 01604 702822  
e. [sparry@northamptonshire.gov.uk](mailto:sparry@northamptonshire.gov.uk)



EVENT: L15905

INTERVENTION: L19982

EXCAVATION: L19983

CHAPEL YARD, NORTH STREET, STAMFORD

negative

STAFF

Project Manager Andy Mudd BA MIFA  
 Text David J. Leigh BA Hons  
 Fieldwork David J. Leigh  
 Illustrations Jacqueline Harding BA HND

QUALITY CONTROL

	Print name	Signed	Date
Checked by	Pat Chapman	<i>P Chapman</i>	4/3/05
Verified by	Andy Mudd	<i>A Mudd</i>	4/3/05
Approved by	Andy Chapman	<i>A Chapman</i>	4/3/05

Conservation  
 Services  
 11 APR 2005  
 Highways & Planning  
 Directorate

**OASIS REPORT FORM**

<b>PROJECT DETAILS</b>		
Project name	An archaeological watching brief on land at Chapel Yard, North Street, Stamford, Lincolnshire	
Short description (250 words maximum)	An archaeological watching brief was undertaken during groundworks connected with the construction of a residential development on land at the former nightclub site, North Street, Stamford, Lincolnshire. A heavily disturbed stratigraphy was noted across all the development area. No archaeological deposits were present and no artefacts were recovered.	
Project type (eg DBA, evaluation etc)	Watching Brief, Planning Application No: SO2/0326/69	
Site status (none, NT, SAM etc)		
Previous work (SMR numbers etc)	None	
Current Land use	Site of former nightclub, brown field site	
Future work (yes, no, unknown)	No	
Monument type/ period		
Significant finds (artefact type and period)		
<b>PROJECT LOCATION</b>		
County	Lincolnshire	
Site address (including postcode)	The former nightclub site, Chapel Yard, North Street, Stamford, Lincolnshire	
Study area (sq.m or ha)		
OS Easting & Northing (use grid sq. numbers)	50302307370	
Height OD		
<b>PROJECT CREATORS</b>		
Organisation	Northamptonshire Archaeology	
Project brief originator	The South Kesteven Community Archaeologist	
Project Design originator	Northamptonshire Archaeology	
Director/Supervisor	David J. Leigh	
Project Manager	Andy Mudd	
Sponsor or funding body	Wilson and Heath Architects on behalf of Maiden Properties Ltd	
<b>PROJECT DATE</b>		
Start date	July 2004	
End date	July 2004	
<b>ARCHIVES</b>	<b>Location (Accession no.)</b>	<b>Content (eg pottery, animal bone etc)</b>
Physical		
Paper	Lincolnshire museums: Accession Code: LCNCC: 2005.55	Watching brief forms (5) Colour slides (42) black and white contact prints (38)
Digital	Ditto	Report text and figures

## Contents

- 1 INTRODUCTION
  - 2 BACKGROUND
  - 3 OBJECTIVES AND METHODOLOGY
  - 4 THE RECORDED EVIDENCE
  - 5 THE SITE ARCHIVE
  - 6 CONCLUSIONS
- BIBLIOGRAPHY

### Figures

Fig 1: Site location

Fig 2: Location of groundworks

### Plates

Plate 1: General view of development area at start of works

Plate 2: Foundation trenches during groundworks

**AN ARCHAEOLOGICAL WATCHING BRIEF  
ON LAND AT CHAPEL YARD, NORTH STREET  
STAMFORD, LINCOLNSHIRE**

*Abstract*

*An archaeological watching brief was undertaken during groundworks relating to the construction of a residential development on land at Chapel Yard, North Street, Stamford, Lincolnshire. A heavily disturbed stratigraphy was noted across all of the development area. No archaeological deposits were present and no artefacts were recovered.*

**1 INTRODUCTION**

An archaeological watching brief was undertaken by Northamptonshire Archaeology in July 2004 during groundworks associated with the construction of a new residential development (Planning application No: SO2/0326/69) on land at the former nightclub site, Chapel Yard, North Street, Stamford, Lincolnshire (NGR TF 0302 0737: Fig 1). The work was carried out on behalf of Wilson and Heath Architects acting on behalf of Maiden Properties Ltd in order to fulfil the requirements of a brief for an archaeological watching brief issued by South Kesteven Community Archaeologist on the 2<sup>nd</sup> July 2004.

**2 BACKGROUND**

**2.1 Location and Topography**

The development area covers about 950 square metres close to Stamford town centre and lies on level ground which fronts directly onto North Street. The underlying geology has been mapped by the British Geological Survey as comprising of Jurassic Limestone.

**2.2 Historical Background**

Stamford has a well documented history. Settlement is known from the post Roman era with both Danish and Saxon *burhs* situated within the core of the modern town. During the middle ages Stamford was situated on a major north-south communication route, and was an important market centre with 14 churches as well as several religious houses. The development area lies just outside the line of Stamfords medieval walls and close to the position of one of the medieval gateways known as New Gate. No previous archaeological work has been carried out in the development area.

### 3 OBJECTIVES AND METHODOLOGY

The aims of the watching brief were to:

- ◆ Observe the groundworks connected with the new development and to record all archaeological deposits uncovered.
- ◆ Determine the date, character, state of preservation and depth of any archaeological deposits observed and to retrieve all datable artefacts.

The fieldwork comprised of four visits to the site during the excavation of foundation trenches (Fig 2). These were dug to a maximum depth of 2.0m each with a width of 0.70m. The groundworks were carried out using both a JCB type and 360° tracked mechanical excavators. A photographic record in both black and white negative and colour slide was kept and the written record used Northamptonshire Archaeology pro-forma sheets. The watching brief was carried out in accordance with the standards and guidelines for an archaeological watching brief (IFA 1999).

### 4 THE RECORDED EVIDENCE

An examination of the foundation trenches revealed a consistent stratigraphy across all the development area. The natural substrata comprised pale brown fragmented limestone. This was overlain by modern overburden up to 0.42m thick, comprising numerous fragments of modern ceramic building material and occasional fragments of corroded iron within a matrix of grey/black silt loam.

### 5 THE SITE ARCHIVE

Accession No: LCNCC 2005.55 has been allocated by City and County Museums, Lincoln.

The site archive comprises:

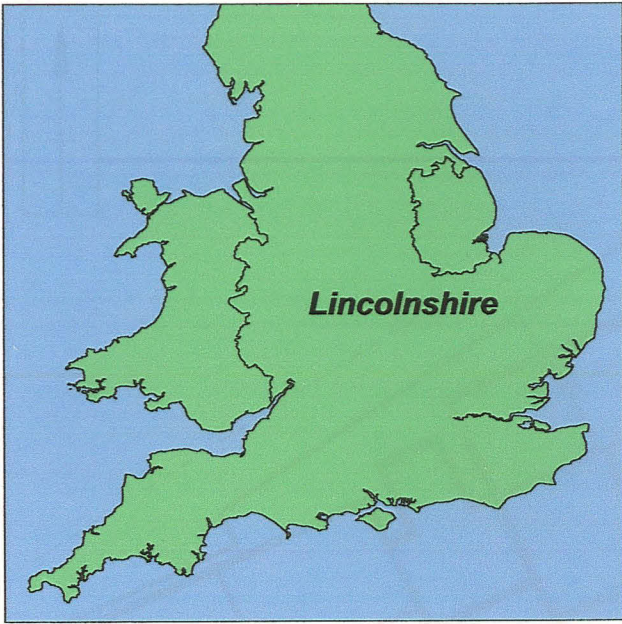
RECORD	NUMBER
Watching brief forms	5
Colour slides	42
Black and white contacts and negatives	38

**6 CONCLUSIONS**

An examination revealed truncated natural substrata across all the development area. This occurred most probably as a result of the construction and subsequent demolition of the large industrial/commercial buildings including the former nightclub that stood on the site until recently. No archaeological deposits were present and no artefacts were recovered.

**BIBLIOGRAPHY**

IFA 1999 *Standards and Guidance for an archaeological watching brief*, Institute of Field Archaeologists



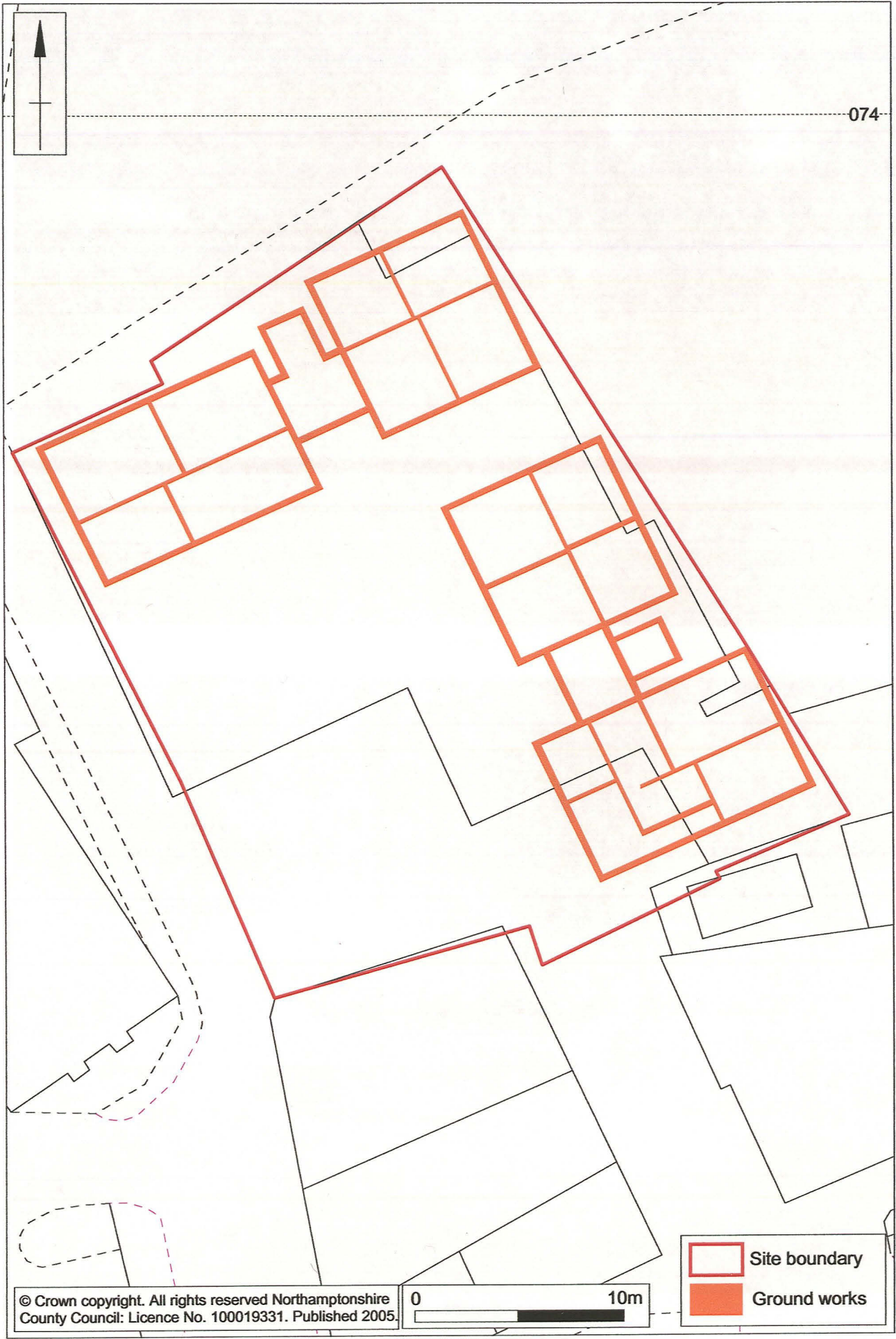
© Crown copyright. All rights reserved Northamptonshire County Council: Licence No. 100019331. Published 2005

Scale 1:5000

Fig. 1



074



© Crown copyright. All rights reserved Northamptonshire County Council: Licence No. 100019331. Published 2005.

0 10m

Scale 1:250

Site boundary  
Ground works

Fig. 2



Plate 1



Plate 2