



Summary

1.0 Introduction

2.0 Topography

3.0 Archaeology

4.0 Objectives

5.0 Methodology

6.0 Results of the

7.0 Bibliography

8.0 Figures

**Report on an Archaeological Watching Brief:
Grange Close, off Grange Lane, Ingham, Lincolnshire**

NGR SK 9468 8362

Planning Reference: APP/N2535/A/00/1048820

Produced by

John Samuels Archaeological Consultants

on behalf of

Truelove Property & Construction Ltd

4A Eastgate

Lincoln

LN2 1 QB

Site Code: GCI01

Accession No:2001.124

JSAC 813/05/01

October 2005



THE MANOR SOUTH STREET NORMANTON-ON-TRENT NEWARK NOTTINGHAMSHIRE NG23 6RQ
TELEPHONE 01636 821727 FAX 01636 822080 E-MAIL info@jsac.co.uk



acknowledged receipt 19/6/06

100

**Conservation
Services**

19 JUN 2006

**Highways & Planning
Directorate**

**Report on an Archaeological Watching Brief:
Grange Close off Grange Lane, Ingham, Lincolnshire**

Drudlow Property & Construction Ltd were granted planning permission for

some third party claim no features or finds of archaeological interest were uncovered
in the course of the watching brief.

<i>Summary</i>	2
1.0 Introduction.....	3
2.0 Topography and geology	3
3.0 Archaeological and Historical Background	4
4.0 Objectives	4
5.0 Methodology	4
6.0 Results of the Watching Brief.....	4
7.0 Bibliography.....	6
8.0 Figures	6

Summary

Truelove Property & Construction Ltd were granted planning permission for construction of three residential dwellings on land off Grange Lane, Ingham, Lincolnshire. A condition of the planning permission required an archaeological watching brief to be maintained during groundwork.

A specification for an archaeological watching brief was prepared by John Samuels Archaeological Consultants and agreed with the Archaeological Officer for Lincolnshire County Council prior to groundwork commencing.

The watching brief was carried out between June and August 2002. Other than a stone lined field drain no features or finds of archaeological interest were uncovered in the course of the watching brief.

1.0 Introduction

96/P/0888
1.1 Truelove Property & Construction Ltd have been granted planning permission (ref: APP/N2535/A/00/1048820) for residential development of land off Grange Lane, Ingham, Lincolnshire centered on NGR SK 9468 8362 (Fig 1).

1.2 The planning application was approved by West Lindsey District Council subject to various conditions, one of which stated that;

Prior to commencement of development details of an archaeological watching brief to be carried out by an archaeologist approved by the District Planning Authority shall be submitted to and approved in writing by the District Planning Authority. The archaeologist shall be afforded access at all reasonable times by the developer to undertake the watching brief.

1.3 This document forms the report on the watching brief undertaken on behalf of Truelove Property & Construction Ltd by John Samuels Archaeological Consultants between June and August 2001. It has been written by Paul Gajos BA (Hons) AIFA in consultation with J Forbes Marsden BA, MA Cert. Arch, MIFA. It conforms to the requirements of *Planning Policy Guidance Notes 16: Archaeology and Planning* (DoE, 1990). It is in accordance with current best archaeological practice and the appropriate national and regional standards and guidelines, including:

Code of Conduct (Institute of Field Archaeologists, 2000);

Standard and Guidance for Archaeological Watching Briefs (Institute of Field Archaeologists, 1999);

Management of Archaeological projects (English Heritage, 1991);

Model Briefs and Specifications for Archaeological Assessments and Field Evaluations (Association of County Archaeological Officers, 1994)

2.0 Topography and geology

2.1 The site covers an area of approximately 0.3ha is located on the northern edge of the village, off Grange Lane (Fig 2). The development site lies on fairly level ground at approximately 32m AOD.

2.2 The soils of the area are identified as belonging to the Banbury group of Jurassic and cretaceous ironstone (SSEW 1983).

3.0 Archaeological and Historical Background

- 3.1 Little pre-medieval activity has been identified from Ingham Village itself, although evidence of Romano-British occupation has been found in the parish and a major Iron Age settlement is known 6.5km to the northeast at Owmbly. The earliest documentary record of Ingham, the Domesday Book, records seven manors, one of which combined two pre-conquest manors. Local stories mention a 'Danish cemetery' beneath the village green but no evidence is known to support this. The present polyfocal layout of the village probably reflects the multiple manors recorded in Domesday.

4.0 Objectives

- 4.1 An archaeological watching brief has been defined as *a programme of observation and investigation conducted during any operation carried out for non-archaeological reasons within a specified area or site...where there is the possibility that archaeological deposits may be disturbed or destroyed. The programme will result in the preparation of a report and ordered archive* (IFA, 1999).
- 4.2 The specific objective of the watching brief was to establish whether any archaeological remains survived on the development site, and if so, to record and determine their nature, condition, extent and significance.

5.0 Methodology

- 5.1 The watching brief was maintained as an intermittent presence by a suitably qualified archaeologist during groundwork associated with the excavations of the house footings.
- 5.2 A site diary was maintained and descriptions were written of the natural deposits exposed. A photographic record was maintained in colour print format. The contractor provided a plan showing the actual positions of the excavations.
- 5.3 An ordered site archive will be deposited with an appropriate local museum. This will follow the guidelines contained in "Guidelines for the preparation of Excavation Archives for long term storage" (UKIC 1990) and "Standards in the Museum Care of Archaeological Collections" (Museums and Galleries Commission 1992).
- 5.4 Copies of this report will be sent to the client, the Lincolnshire SMR and to the County Archaeological Officer.
- 5.5 All work was undertaken with respect to health and safety provision.

6.0 Results of the Watching Brief

- 6.1 The excavations of the three house footings revealed topsoil to a depth of 0.25m overlying 0.3m of subsoil formed by the mixing of topsoil with the

- 7.2 underlying clay natural, which comprised gleyed and yellow brown clay with chalk inclusions.
- 6.2 A field drain filled with limestone blocks was seen in the easternmost footing for the garage of plot 1. This feature was originally identified in the field as a wall but on closer inspection it was proved to be nothing more than a field drain. No other features or finds of archaeological interest were encountered in the course of the watching brief.

8.0 Figures

Figure 1: Site location

Figure 2: Detailed site plan

Plate 1: Stratigraphy revealed in section of footings (plot 1)

Plate 2: Steel lined field drain (plot 1)

Plate 3: Excavation of plot 3

7.0 Bibliography

JSAC 813/00/01b, 2001, *A Specification for an Archaeological Watching Brief to be undertaken in connection with residential development at Grange Close, off Grange Lane, Ingham*

The Soil Survey of England and Wales, 1983, 1:250 000 Sheet 4

8.0 Figures

Figure 1: Site location

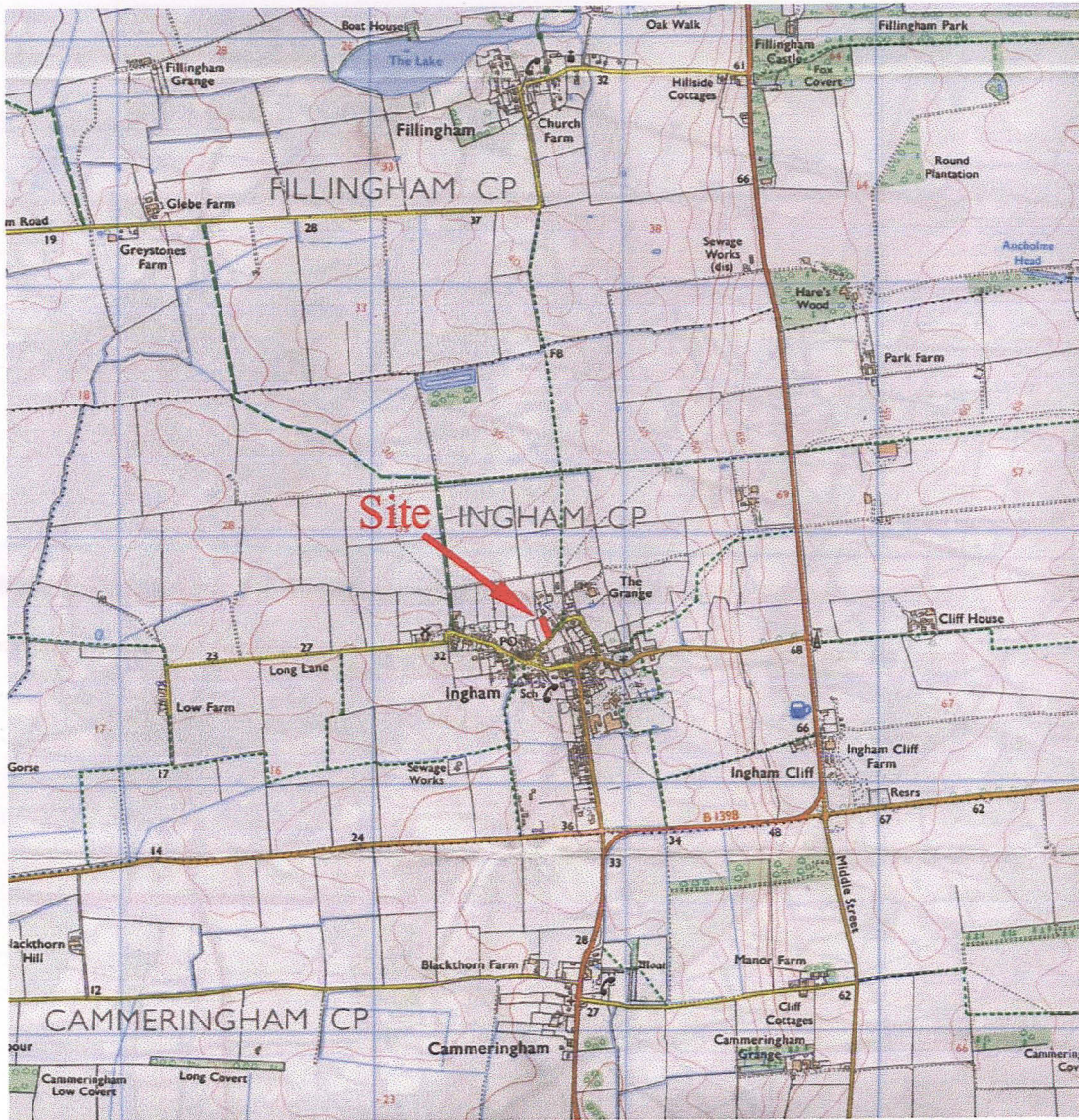
Figure 2: Detailed site plan

Plate 1: Stratigraphy revealed in section of footings (plot 1)

Plate 2: Stone lined field drain (plot 1)

Plate 3: Excavation of plot 3

Report on an Archaeological Watching Brief: Grange Close, off Grange Lane, Ingham, Lincolnshire



Note: Map based on Ordnance Survey with the sanction of H.M. Stationary Office, Crown Copyright Reserved. Licence No. AL 100020447

Figure 1: Site location

Figure 2: Detailed site plan

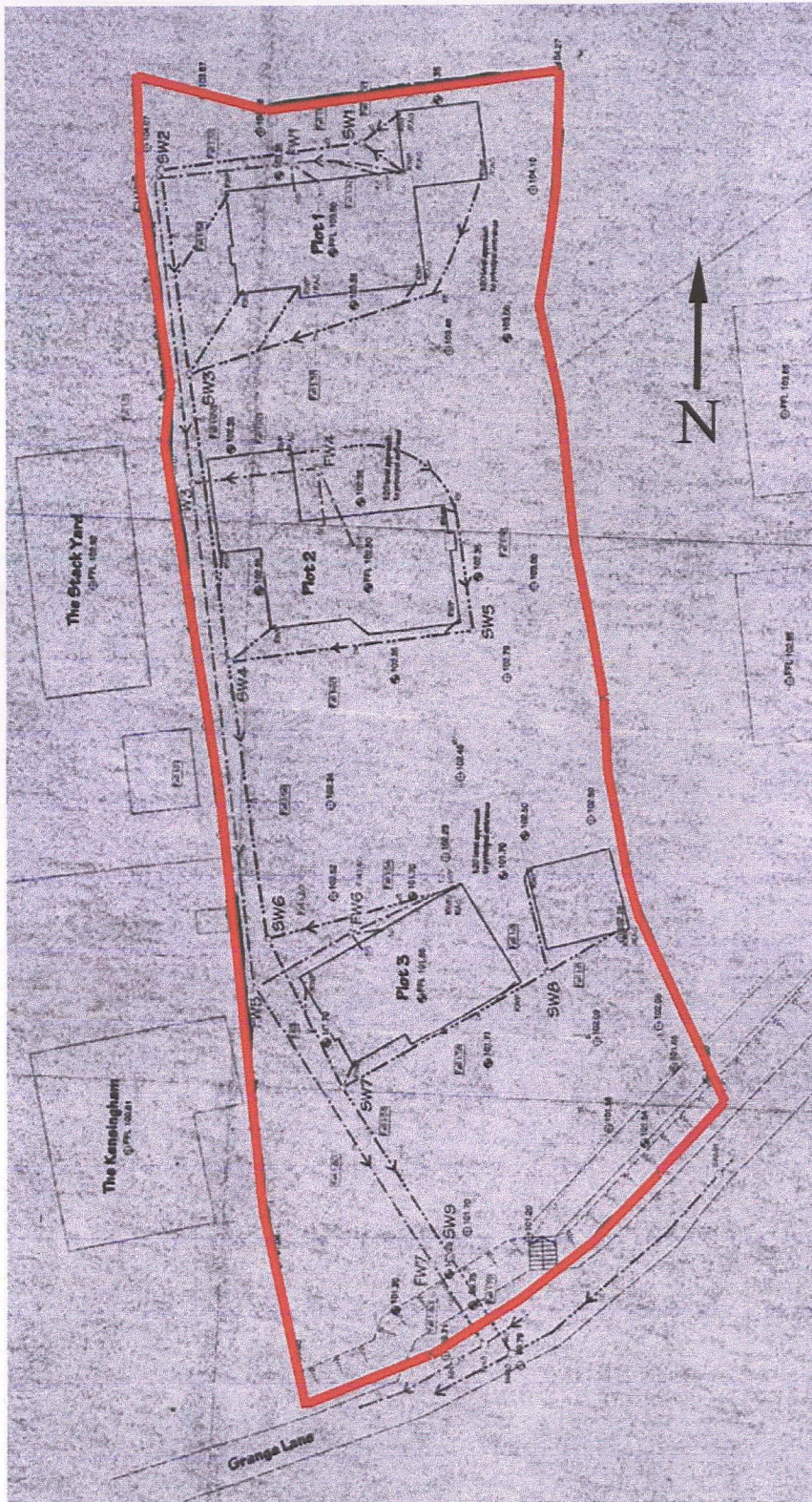


Figure 2: Detailed site plan



Plate 1: Stratigraphy revealed in section of footings (plot 1)

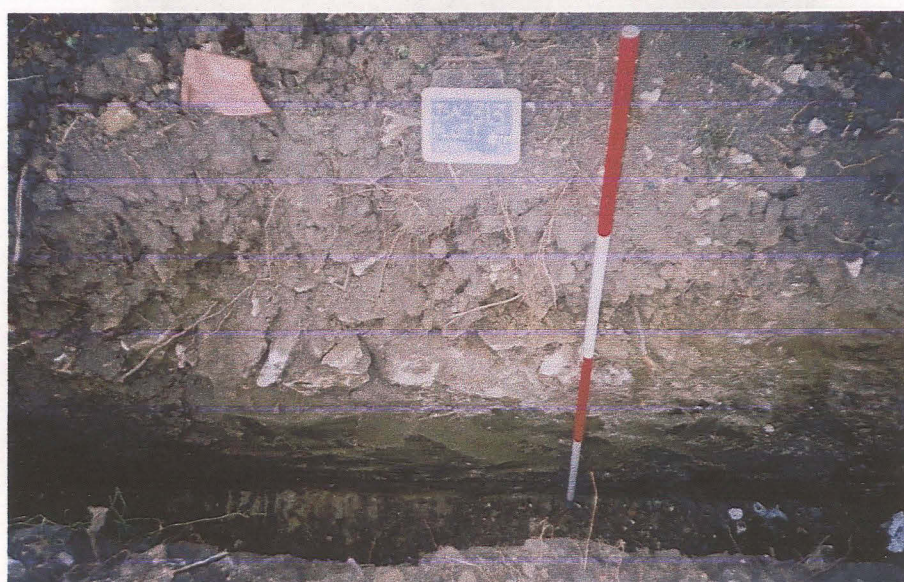


Plate 2: Stone lined field drain (plot 1)



Plate 3: Excavation of plot 3