

HER 4W

110/4

**HISTORIC BUILDING SURVEY REPORT:
HARDINGS FARM, LISSINGTON,
LINCOLNSHIRE**

Planning Reference: 125521
NGR: TF 0994 8485
Site Code: LIHF 10
LCCM Accession Number: 2010.110
OASIS Reference Number: allenarc1-80430



Report prepared for Mr David Nelstrop

By
Allen Archaeology Limited
Report Number 2010043

August 2010



The
Authority on
Archaeological
Planning
Services

Postbook No:	306279
Officer Dealing:	Karen W
Date Reply Required:	
Date Replied Via:	
CRM Transaction No:	

Lincolnshire County Council
- 6 AUG 2010
Support Services

Contents

Summary	1
1.0 Introduction	2
2.0 Site Location and Description	2
3.0 Planning Background	2
4.0 Archaeological and Historical Background	2
5.0 Methodology	3
6.0 Results	3
7.0 Discussion	6
8.0 Acknowledgements	6
9.0 References	7

List of Appendices

Appendix 1: Colour Plates	8
Appendix 2: Photographic Archive List	30

List of Figures

- Figure 1:** Site location at scale 1:25,000, with site shown in red.
- Figure 2:** Site plan of Block A and B at scale 1:500. Arrows show the associated shot and which direction it was taken.
- Figure 3:** Ground floor plan of Block A and B at scale 1:150.
- Figure 4:** Block A elevations at scale 1:150.
- Figure 5:** Block B elevations at scale 1:150.
- Figure 6:** First Edition 6" scale Ordnance Survey map (1891) of Harding Farm at scale 1:5000

List of Plates

- Plate 1:** East-north-east facing elevation of animal shelter A1, looking north-west
- Plate 2:** South-south-east elevation of Block A with brick repair on the gable of A1, looking north-north-west
- Plate 3:** West-south-west facing elevation of Block A, buildings A1 to A3, looking east-north-east
- Plate 4:** North-north-west facing elevation of Block A, looking south-south-east
- Plate 5:** Roof structure of animal shelter A1, looking north-north-west
- Plate 6:** Brick feeding trough and hay rack within animal shelter A1. Looking north-west
- Plate 7:** General shot of store A2 interior. Looking north-west.
- Plate 8:** Roof structure of store A2, looking north-east.
- Plate 9:** Store A3 interior, looking north-west.
- Plate 10:** East-north-east elevation of cart shed A4, looking south-west

- Plate 11:** Cart shed A1 showing central column of bullnose bricks and dirt floor, looking east-south-east.
- Plate 12:** Kingpost roof structure in cart shed A1, looking east-north-east.
- Plate 13:** East-north-east facing elevation with raised walkway of the western range of Block B, looking west-south-west
- Plate 14:** General shot of south-south-east elevation of the western range. A clear glass pantile has been used to repair the roof. Looking north-north-west
- Plate 15:** West-south-west facing elevation of the western range of Block B showing recent brickwork repair adjacent to door, looking north-east
- Plate 16:** West-south-west facing elevation of the western range showing a second access into barn B4 and a wooden gate leading into the crew yard between Block A and B.
- Plate 17:** North-north-west elevation of western range of Block B. The adjacent elevation of the lean-to shows scarring of a modern ramp that was recently removed. This shot also shows the recently raised roof above the double barn door. Looking south-south-east
- Plate 18:** General shot of barn B1 interior, showing vaulted brick built feeding trough and wooden hay rack. Looking west-south-west.
- Plate 19:** General shot of store B2 interior showing roof structure and the north-north-west to south-south-east aligned floor gutter. Looking north-west
- Plate 20:** Interior of barn B3 showing roof structure, broken cement floor and feeding trough. Looking west-south-west
- Plate 21:** Interior of barn B4 showing collapsing roof and machinery opening on the west-south-west facing elevation. Looking north-north-east
- Plate 22:** General view of the western door and window of barn B4, looking south-south-west
- Plate 23:** Roof structure of barn B4, looking north
- Plate 24:** South-south-east facing elevation with lean-to of the middle range of Block B. Looking north.
- Plate 25:** Lean-to structure and south-south-east elevation of threshing barn B5. Looking north-east.
- Plate 26:** West-south-west facing elevation of the middle range of Block B and the northern lean-to. Looking south-east.
- Plate 27:** North-north-east elevation of Block B. Looking south-south-east
- Plate 28:** North-north-west elevation of the middle range of Block B showing lean-to roof structure, northern entrance to the threshing barn and barn B6. Also note the pitching hole under the eaves of the threshing barn as well as the decorative ventilation slit.
- Plate 29:** East-north-east and south-south-east elevations of threshing barn B5 interior. Clear pantiles serve as skylights. Looking south-east.
- Plate 30:** General shot of threshing barn showing the two openings on ground floor and opening on first floor to the adjacent barn B6. Looking west-south-west
- Plate 31:** North-north-east elevation of threshing barn with a pitching hole and a brick buttress to its right. Looking north-north-east.
- Plate 32:** Roof structure of threshing barn with a view of the roof walkway. Looking up and facing east-south-east.
- Plate 33:** East-north-east elevation of barn B6 with first floor opening to threshing barn. A walkway is attached to the roof and remains of wooden floor beams are visible under the opening. Looking south-east.
- Plate 34:** West-south-west facing elevation of the eastern range of Block B showing access to barn B8 to the left and store B9 to the right. Looking east-south-east.
- Plate 35:** South-south-east facing elevation of the eastern range of Block B showing doorway and bricked up window. Looking north-north-west.
- Plate 36:** East-north-east facing elevation of the eastern range of Block B showing openings to barn B10, store B11, access to crew yard and an opening to the grain dryer B7. Looking north-west.

- Plate 37:** Interior shot of grain dryer B7, showing partition wall, roof structure and a funnel likely to be associated with the drying process. Looking south-west.
- Plate 38:** Exterior shot of the grain-dryer B7 with modern brick work with an English Garden Wall Bond below the wooden beam. Looking west-south-west.
- Plate 39:** Interior shot of barn B8 with broken roof structure and raised floor with a feeding trough at the far end. Looking east-north-east.
- Plate 40:** Roof structure of barn B8. Looking south-east.
- Plate 41:** General view of store B9 showing intruding vegetation from the roof. Looking east-south-east.
- Plate 42:** Interior shot of store B9 showing two accesses and the original brick floor. Looking west-north-west.
- Plate 43:** Barn B10 showing feeding trough. Wooden beams have been installed to perhaps offer wall support. Looking west-south-west.
- Plate 44:** General interior shot of store B11. Looking north-west.

Document Control

Element	Name	Date
Report prepared by:	Maria Piirainen	03/08/2010
Illustrations prepared by:	Maria Piirainen	02/08/2010
Report edited by:	Chris Clay	04/08/2010
Report produced by:	AAL 2010043	04/08/2010

In line with AAL environmental policies, this document is printed double sided on 100% recycled paper to reduce wastage, and help protect the environment.

Summary

- Allen Archaeology Limited was commissioned by Mr David Nelstrop to carry out a photographic survey of a range of agricultural buildings at Hardings Farm in Lissington, Lincolnshire.
- The site comprised two blocks of buildings; an L-shaped range of brick farm buildings and a cart shed, and a U-shaped arrangement of brick farm buildings and lean-tos, representing several phases of construction during the 19th – 21st centuries.
- The earliest structure recorded was probably the threshing barn which formed the core of a west-south-west to east-north-east range with an attached two-storey barn and grain-dryer.
- The threshing barn was abutted by later north-west/south-east ranges comprising barns and stores.
- The L-shaped range consisted of an animal shelter, two stores and a cart shed.

1.0 Introduction

- 1.1 Allen Archaeology Limited (hereafter AAL) was commissioned by Mr David Nelstrop to undertake a photographic survey of a complex of agricultural buildings that are being converted into two live/work units at Hardings Farm, north of Lissington in Lincolnshire.
- 1.2 The methodology conforms to a specification prepared by this company (Allen 2010), based on the recommendations of the Historic Environment Team at Lincolnshire County Council (2010).
- 1.3 A copy of the survey report and the full project archive will be submitted to the local museum in Lincoln, 'The Collection', for long-term storage, and will be stored under the Museum Accession Number LCCNC: 2010.110.

2.0 Site Location and Description

- 2.1 The buildings are situated in the grounds of Hardings Farm, approximately 1.8km north-north-west of the village of Lissington in Lincolnshire, centred on NGR TF 0994 8485.
- 2.2 The survey area comprises two blocks of brick built farm buildings situated to the north-west of the farmhouse, one L-shaped (Block A) and the other U-shaped (Block B). A modern barn and a pond lay directly north-west of the two blocks.

3.0 Planning Background

- 3.1 A planning application for the conversion of existing redundant farm buildings into two live/work units, including the removal of two steel framed storage buildings was submitted to West Lindsey District Council and approved with conditions (Planning Reference 125521). The planning conditions included the undertaking of a programme of historic building recording of the structures that are affected by development.

4.0 Archaeological and Historical Background

- 4.1 A 1km radius search surrounding the site was carried out by The Spatial Planning Group using data held in the Lincolnshire Historic Environment Record (Spatial Planning Group 2010). The earliest evidence encountered in the search was a single fragment of Romano-British pottery found to the east of the site, with two further sherds of pottery of medieval date found during the construction of a gas pipeline to the north-east.
- 4.2 Lissington is first mentioned in the Domesday Survey of 1086, where land held by Lambakarl was given to Herbert, the Archbishop of York's man (Morgan and Thorn 1986). At the time of the survey there were 2 ploughs, 16 villagers, 8 smallholders and 4 Freemen who had 5 ploughs, with 80 acres of meadow and 80 acres of underwood.
- 4.3 At the time of the survey the settlement was known as *Lessintone*, from the Old English, perhaps meaning 'the farmstead, village associated with or named after Lēofsige' (Cameron 1998).
- 4.4 Hardings Farm dates back to at least the late 19th century as the First Edition Ordnance Survey map of 1891 shows the existing L-shaped and U-shaped ranges of buildings as well as the existing pond on the site at this time (Figure 6).

5.0 Methodology

- 5.1 The works described below are based on a brief provided by the Historic Environment Team at Lincolnshire County Council (2010). The building survey was undertaken on Friday 23rd July 2010 by the author, who recorded all aspects of the relevant buildings. The modern concrete floors within the buildings had been broken up prior to the visit whilst the original brick floors, where still present, had been left in-situ. The survey was conducted in strict accordance with the contents of the specification prepared by this company (Allen 2010).
- 5.2 The building survey was undertaken using a digital 12.2 Megapixel SLR camera (Fujifilm Finepix S1800) with an 18x optical zoom. The weather was mostly sunny and bright, and light was generally good. On occasion there was little illumination available for some interior photography, where an integral flash was used. A tripod was used for the majority of the shots. Photographs of architectural detail incorporated appropriate metric scales where possible, and all shots were located on scale plans of the buildings (Figure 2 and 3). A selection of the photographs is included in this report (Appendix 1), and a list of all shots taken is reproduced as Appendix 2 at the end of the report. The full photographic archive will be submitted to the Lincolnshire Archives with a copy of the report where it will be stored under Museum Accession Number LCCNC: 2010.110.
- 5.3 Photographs were taken of the following: -
- All external elevations
 - All internal elevations, including internal walls and subdivisions
 - The roof structure of the buildings, internally and externally
 - The relationship of the structures to their surroundings
 - Architectural details, i.e. windows, doors, decorative brickwork, carpentry joints, re-used timbers and other significant features, fixtures or fittings. Generally a single representative shot was taken of particular features such as windows or openings of a single type that occurred more than once within each structure
 - A general internal photographic record of the building. Shots were taken of each room/discrete internal space from sufficient points to show the form, general appearance and methods of construction

6.0 Results

6.1 Block A (Appendix 1: Plates 1 – 12)

- 6.1.1 Block A consists of a possible animal shelter (A1) and two stores (A2 and A3) running north-north-west to south-south-east and abutting a cart shed (A4) running west-south-west to east-north-east. A1 – A3 are built in Flemish Stretcher Bond with between 1 and 3 stretcher courses between each Flemish Bond course. Ceramic S-shaped pantiles cover a double-pitched gabled roof, hipped at its north end.
- 6.1.2 A1 is a three bay structure open on its east elevation, divided by three wooden columns, with the northern and southern examples on a concrete pad (Plate 1). The south gable show signs of later brickwork near the apex of the roof. This is likely to be a repair rather than a blocked up opening since there is no sign of any previous arch or a wooden lintel. A brick boundary wall extends eastwards from the south-east corner of the building (Plate 2). The west-south-west elevation has brick dentilation beneath under the eaves and two wooden double barn door openings accessing A2 and A3. (Plate 3).

- 6.1.3 The roof structure in animal shelter A1 consists of three trusses each comprising a tie beam supporting a kingpost with diagonal struts extending to the principal rafters with trenced side purlins (Plate 5). There are brick built feeding troughs along the west-south-west elevation as well as a wooden hay rack (Plate 6). An opening to the north-north-west leads into storage room A2 which has an uneven brick floor with a slight raise in the middle; signs that this space may have been used to shelter a wheeled vehicle causing depressions where the wheels would have worn down the surface (Plate 7). The roof structure comprises a ridge piece with side purlins and common rafters (Plate 8).
- 6.1.4 A recently installed opening in the north corner of the room leads into A3 which at the time of the survey was used as a storage space with brick floor (Plate 9).
- 6.1.5 The cart shed with dirt floor (A4) has been built using an irregular form of English Garden Wall Bond with three courses of stretchers between a course of two stretchers paired with three headers (Plate 10). A brick column with modern bullnose bricks supports a wooden lintel and divides the north elevation of the shed into two bays (Plate 11). It has a kingpost roof structure, with through purlins, the same as in the animal shelter A1 described above (Plate 12).

6.2 Block B (Appendix 1: Plates 13 – 44)

- 6.2.1 The U-shaped Block B consists of three ranges running north-north-west to south-south-east and west-south-west to east-north-east. It comprises barns B1, B3 and B4, store B2, threshing barn B5, barn B6, grain-dryer B7, barns B8 and B10 and stores B9 and B11. The west range is fronted by a raised walkway built of ceramic and concrete bricks (Plate 13). The buildings display polychrome brick comprising yellow Gault bricks and standard red bricks, all constructed in English Garden Wall Bond. The buildings all have S-shaped pantile roofs, which are mostly double pitched gable roofs, with hipped roofs at the south ends of the east and west ranges (Plates 14 and 36).
- 6.2.2 The east elevation of the west range, facing the crew yard, has three openings into B1, B2 and B3, each with wooden stable doors (Plate 13). The west elevation of B1 to B3 has few features of note, other than a bricked-up opening in B3, a number of small ventilation holes, and occasional small brickwork and concrete repairs (Plate 15).
- 6.2.3 There are two entrances to Barn B4; one from the crew yard, and one from the west-south-west elevation, the latter comprising a wooden door frame below a single coursed segmental arch (Plate 16). Next to the door is a window with wooden sill blocked with plastic sheeting, also below a brick segmental arch. The north elevation of B4 has a large wooden double door over which the roof has been raised and fitted with corrugated steel. A ramp formerly lead up to the door, scarring of its removal can still be seen on the adjacent brick wall (Plate 17). These alterations may have been done to allow a larger vehicle such as a lorry to dock and unload goods to or from the building.
- 6.2.4 Barn B1, probably a stable or animal shelter, was at the time of survey used as a storage area. It had a brick floor, and a vaulted brick feeding trough and wooden hay rack were recorded on the west-south-west elevation (Plate 18). In the north-east corner an opening leads into store B2. No feeding troughs or animal tethering rings could be found in this space; however a gutter or drain ran along the floor probably to carry away animal waste, indicating that it originally may have been constructed to hold livestock (Plate 19).
- 6.2.5 Barn B3, situated to the north of B2 had a single opening with a wooden frame, a concrete floor, a vaulted brick feeding trough and a simple roof structure comprising common rafters with side purlins and ridge piece (Plate 20).

- 6.2.6 Elements of barn or store B4 were in a poor state of repair, with the eastern wooden door hanging off its hinges and an unstable roof structure, possibly a result of the raised roof above the double door opening in the north elevation (Plates 21 and 22). A probable machinery opening supported by a wooden lintel had been made through the adjoining wall with B6. The coupled rafter roof consisted of through purlins and two collar beams with a ridge piece and several ad hoc modifications (Plate 23).
- 6.2.7 Probably the oldest building on the yard is the threshing barn B5 and attached barn B6. There are two opposing openings to the threshing barn in the north and south elevations; both raised roughly 0.60m above ground level, and both beneath a brick segmental arch (Plates 25, 27 and 28). The south-south-east elevation of this range has a modern lean-to attached with ceramic pantile roof (Plate 24), supported by four wooden columns on concrete and brick pads.
- 6.2.8 The west-south-west facing gable end of the building has a window in a wooden frame divided into four lights. A second lean-to is located on the north-north-west elevation. It has a single pitched pantile roof supported by four wooden columns, with a further northwards projection covered by corrugated steel also supported by four wooden columns (Plate 26, 27 and 28).
- 6.2.9 In the north-west corner of B6 there is a large opening with a wooden lintel supported by a cylindrical brick column and a wooden post (Plate 28).
- 6.2.10 There were few light sources in the threshing barn, most light was provided by a series of decorative ventilation slits in the north and south elevations, and four small skylights with clear glass pantiles (Plate 29). The roof structure consists of tie beams with principal rafters supporting trenched purlins which are holding up common rafters and trusses. The tie beams also support a wooden roof walkway with no visible means of access or clear function (Plate 32). Two buttresses of two a single brick thickness on the south and north elevations support the walls and give them extra stabilization. There is a pitching hole, on the north elevation and a second larger opening at first floor level joining the threshing barn with barn B6 suggesting that there must have been a second floor or a hayloft (Plates 30 and 31). No evidence was visible of this during the survey however.
- 6.2.11 The function of barn B6 was unclear during the survey; however a structural inspection was conducted in 2009 by M.J. York Consulting Ltd which states that barn B6 formerly contained grain silos (York 2009). Remains of a second floor are evident in the eastern and western elevation where there are still traces of floor beams (Plate 33). These had probably been removed to make room for the silos. There was also a roof walkway in this barn, identical to that recorded in the adjacent threshing barn.
- 6.2.12 On the eastern range, barn B8 and store B9 can be accessed from the west-south-west facing elevation. The polychrome brickwork shows evidence for repairs to the exterior of store B9 at the southern end of the range (Plate 34). The southern elevation of B9 has a wooden door and adjacent bricked up opening to its right with a rounded brick arch (Plate 34). Barn B10 and store B11 are both accessible from doors in the east-north-east facing elevation (Plate 36).
- 6.2.13 The northern end of the eastern range consists of a grain-dryer B7 with a coupled rafter roof, representing the latest addition to this block with modern brickwork repairs (Plate 36). A brick partition wall separates the grain-dryer from an aisle leading into the crew yard. Internally, there is a modern metal funnel against the west elevation, connected to an opening running under the floor surface and exiting the building outside the eastern elevation. This is likely to be part of the grain-drying process (Plate 37 and 38).
- 6.2.14 Barn B8 is located on the opposite side of the aisle, to the south of B7. Modern repairs have been made to the roof which is still slightly slumping, and it is held up by wooden support

beams running from the floor to a collar beam supporting side purlins. The barn has a raised brick floor and a brick built feeding trough against the east elevation (Plates 39 and 40).

6.2.15 Store B9 was heavily overgrown with vegetation hanging down from a collar rafted roof. It was one of the few places where a probably original brick floor could be seen (Plates 41 and 42).

6.2.16 Barn B10 contained a brick built feeding trough with tethering ring (Plate 43); the adjacent room B11 contained no evidence for similar features (Plate 44).

7.0 Discussion

7.1 The buildings recorded during this survey represent a locally significant group of farm buildings that are typical for the region. The earliest component is likely to be the large threshing barn in the northern range of Block B. Such structures usually date to the later 18th or early 19th century, prior to the widespread application of mechanical threshing techniques in the mid 19th century. The exact date of construction of the building and the remaining components is not clear, although the U-shaped and L-shaped ranges had taken form by the time of the First Edition Ordnance Survey map.

7.2 Detailed phasing is not therefore possible, although it was clear that the buildings have undergone many small and large scale developments, additions and alterations reflecting the changing functions of the buildings over time.

8.0 Acknowledgements

8.1 Allen Archaeology Limited would like to thank Mr David Nelstrop for this commission.

9.0 References

- Allen, M., 2010, *Specification for a Historical Building Survey: Hardings Farm, Lissington, Lincolnshire*, Allen Archaeological Limited
- Brunskill, R.W., 2000, *Vernacular Architecture. An Illustrated Handbook*, Faber & Faber Limited, London
- Brunskill, R.W., 2004, *Traditional Buildings of Britain. An Introduction to Vernacular Architecture*, Cassell, London
- Brunskill, R.W., 2009, *Brick and Clay Buildings in Britain*, Yale University Press, London
- Cameron, K., 1998, *A Dictionary of Lincolnshire Place-Names*. English Place-Name Society. University of Nottingham
- English Heritage, 2006, *Understanding Historic Buildings: A Guide to Good Recording Practice*. English Heritage
- Lincolnshire County Council, 2009, *Lincolnshire Archaeology Handbook: A Manual of Archaeological Practice*. Lincolnshire County Council Archaeology Section
- Lincolnshire County Council, 2010, *Building Recording Brief: Hardings Farm, Lissington*. Lincolnshire County Council Historic Environment Team
- Morgan, P. and Thorn, C. (eds), 1986, *Domesday Book: Lincolnshire*. Phillimore & Co. Ltd
- Pevsner, N. and Harris J., 2002, *The Buildings of England: Lincolnshire, second edition*, Penguin, London
- Spatial Planning Group, 2010, Data from Lincolnshire Historic Environment Records (HER) for 1km Radius Around the Hardings Farm, Lissington, Market Rasen, Lincolnshire. Lincolnshire County Council
- Wade Martins, S., 1991, *Historic Farm Buildings*, B.T. Batsford Ltd., London
- York, M.J., 2009, *Structural Inspection of Barn Complex, Hardings Farm, Lissington*. K622/01. M.J. York Consulting Ltd.

Appendix 1: Colour Plates

Shot numbers relate to the overall list of shots (See Appendix 2)



Plate 1 (Shot 11): East-north-east facing elevation of animal shelter A1, looking north-west



Plate 2 (Shot 8): South-south-east elevation of Block A with brick repair on the gable of A1, looking north-north-west

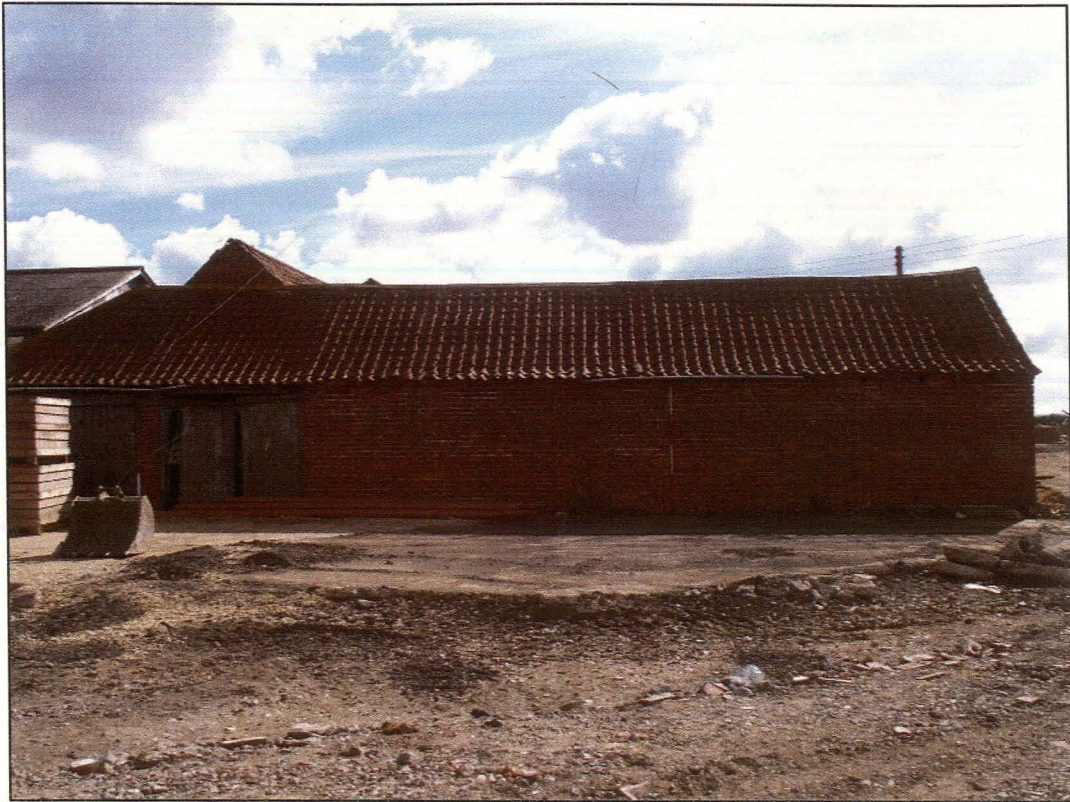


Plate 3 (Shot 9): West-south-west facing elevation of Block A, buildings A1 to A3, looking east-north-east



Plate 4 (Shot 10): North-north-west facing elevation of Block A, looking south-south-east



Plate 5 (Shot 13): Roof structure of animal shelter A1, looking north-north-west



Plate 6 (Shot 14):
Brick feeding trough and hay rack
within animal shelter A1. Looking
north-west



Plate 7 (Shot 15): General shot of store A2 interior. Looking north-west



Plate 8 (Shot 17): Roof structure of store A2, looking north-east



Plate 9 (Shot 18): Store A3 interior, looking north-west



Plate 10 (Shot 29): East-north-east elevation of cart shed A4, looking south-west



Plate 11 (Shot 36): Cart shed A1 showing central column of bullnose bricks and dirt floor, looking east-south-east



Plate 12 (Shot 32): Kingpost roof structure in cart shed A1, looking east-north-east



Plate 13 (Shot 30): East-north-east facing elevation with raised walkway of the western range of Block B, looking west-south-west



Plate 14 (Shot 21): General shot of south-south-east elevation of the western range. A clear glass pantile has been used to repair the roof. Looking north-north-west



Plate 15 (Shot 20): West-south-west facing elevation of the western range of Block B showing recent brickwork repair adjacent to door, looking north-east



Plate 16 (Shot 28): West-south-west facing elevation of the western range showing door into barn B4 and a wooden gate leading into the crew yard between Block A and B



Plate 17 (Shot 27): North-north-west elevation of western range of Block B. The adjacent elevation of the lean-to shows scarring of a modern ramp that was recently removed. This shot also shows the recently raised roof above the double barn door. Looking south-south-east

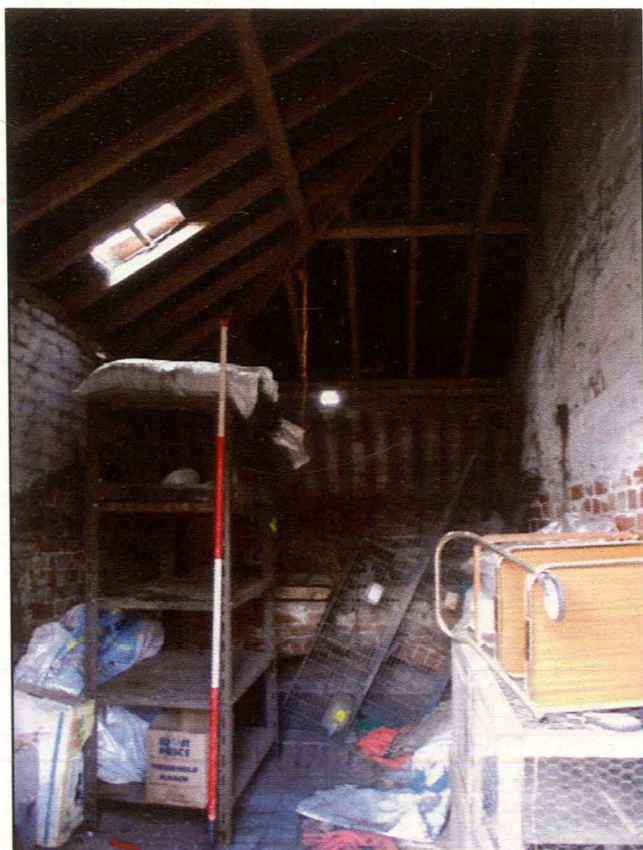


Plate 18 (Shot 42): General shot of barn B1 interior, showing vaulted brick built feeding trough and wooden hay rack. Looking west-south-west



Plate 19 (Shot 44): General shot of store B2 interior showing roof structure and the north-north-west to south-south-east aligned floor gutter. Looking north-west



Plate 20 (Shot 46): Interior of barn B3 showing roof structure, broken cement floor and feeding trough. Looking west-south-west



Plate 21 (Shot 48): Interior of barn B4 showing collapsing roof and machinery opening on the west-south-west facing elevation. Looking north-north-east

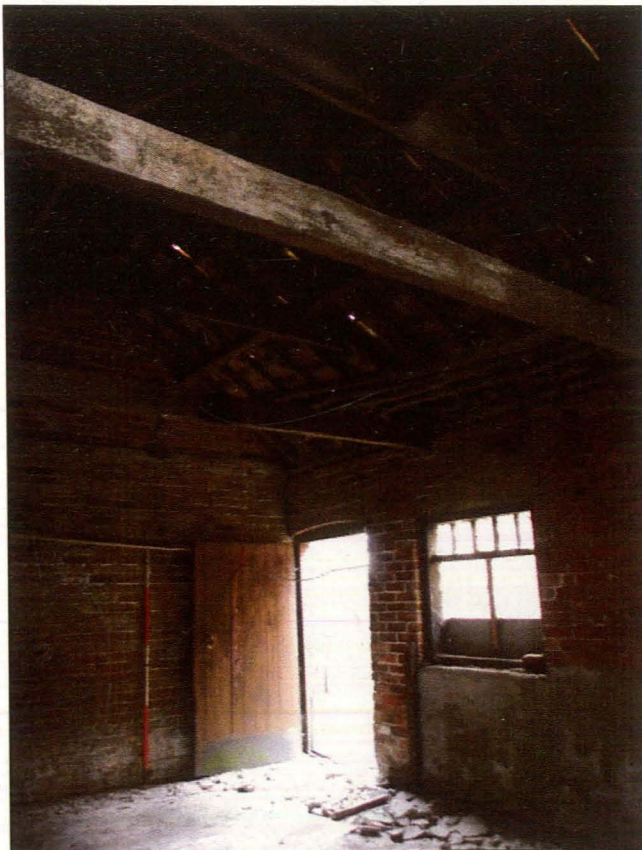


Plate 22 (Shot 50): General view of the western door and window of barn B4, looking south-south-west



Plate 23 (Shot 52): Roof structure of barn B4, looking north



Plate 24: (Shot 37): South-south-east facing elevation with lean-to of the middle range of Block B. Looking north



Plate 25 (Shot 38): Lean-to structure and south-south-east elevation of threshing barn B5. Looking north-east



Plate 26 (Shot 27): West-south-west facing elevation of the middle range of Block B and the northern lean-to. Looking south-east



Plate 27 (Shot 26): North-north-east elevation of Block B. Looking south-south-east



Plate 28 (Shot 66): North-north-west elevation of the middle range of Block B showing lean-to roof structure, northern entrance to the threshing barn and barn B6. Also note the pitching hole under the eaves of the threshing barn as well as the decorative ventilation slit

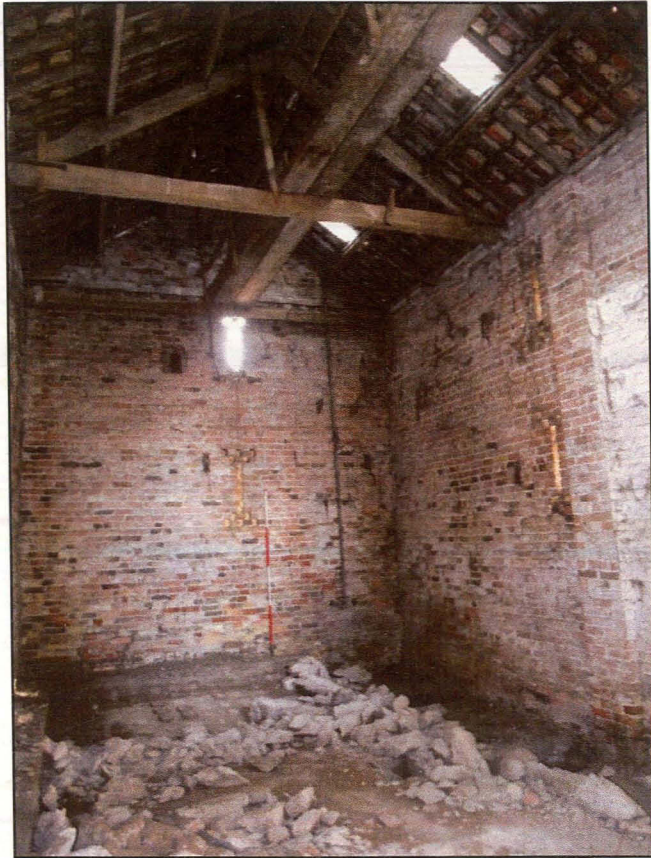


Plate 29 (Shot 53): East-north-east and south-south-east elevations of threshing barn B5 interior. Clear pantiles serve as skylights. Looking south-east



Plate 30 (Shot 55): General shot of threshing barn showing the two openings on ground floor and opening on first floor to the adjacent barn B6. Looking west-south-west



Plate 31 (Shot 57): North-north-east elevation of threshing barn with a pitching hole and a brick buttress to its right. Looking north-north-east



Plate 32 (Shot 54): Roof structure of threshing barn with a view of the roof walkway. Looking east-south-east

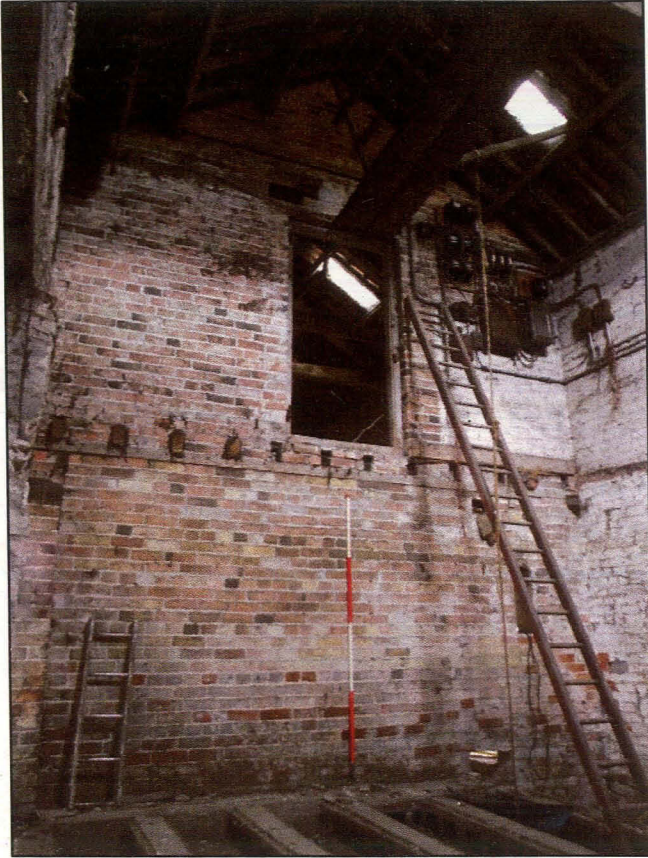


Plate 33 (Shot 61): East-north-east elevation of barn B6 with first floor opening to threshing barn. A walkway is attached to the roof and remains of wooden floor beams are visible under the opening. Looking south-east



Plate 34 (Shot 40): West-south-west facing elevation of the eastern range of Block B showing access to barn B8 to the left and store B9 to the right. Looking east-south-east



Plate 35 (Shot 22): South-south-east facing elevation of the eastern range of Block B showing doorway and bricked up window. Looking north-north-west



Plate 36 (Shot 23): East-north-east facing elevation of the eastern range of Block B showing openings to barn B10, store B11, access to crew yard and an opening to the grain dryer B7. Looking north-west

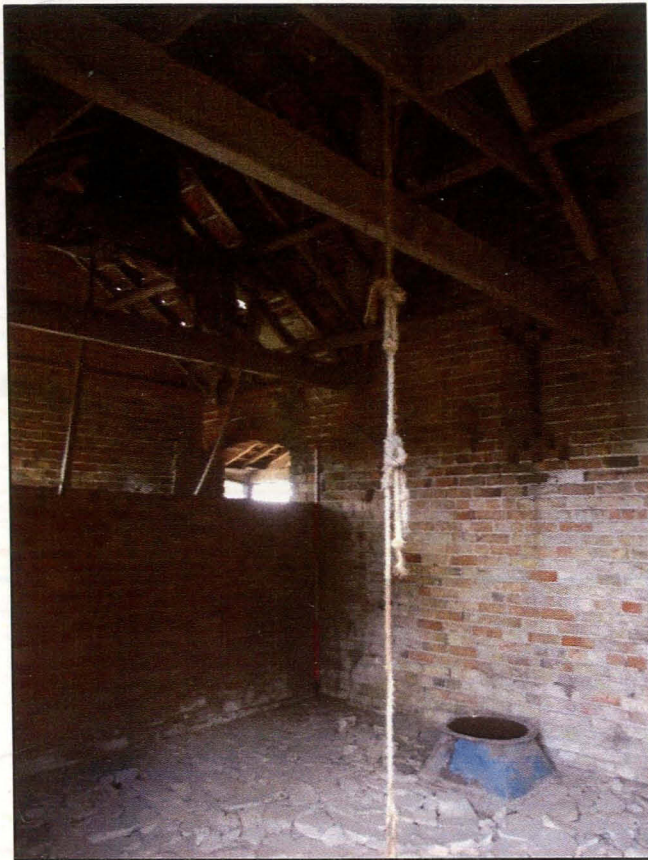


Plate 37 (Shot 68): Interior shot of grain dryer B7, showing partition wall, roof structure and a funnel likely to be associated with the drying process. Looking south-west

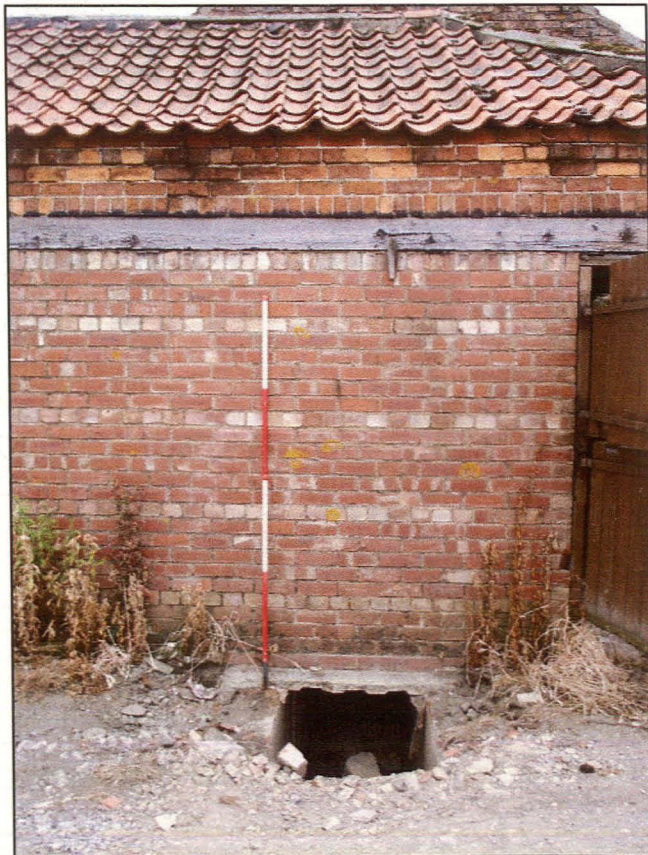


Plate 38 (Shot 72): Exterior shot of the grain-dryer B7 with modern brick work with an English Garden Wall Bond below the wooden beam. Looking west-south-west



Plate 39 (Shot 75): Interior shot of barn B8 with broken roof structure and raised floor with a feeding trough at the far end. Looking east-north-east



Plate 40 (Shot 76): Roof structure of barn B8. Looking south-east

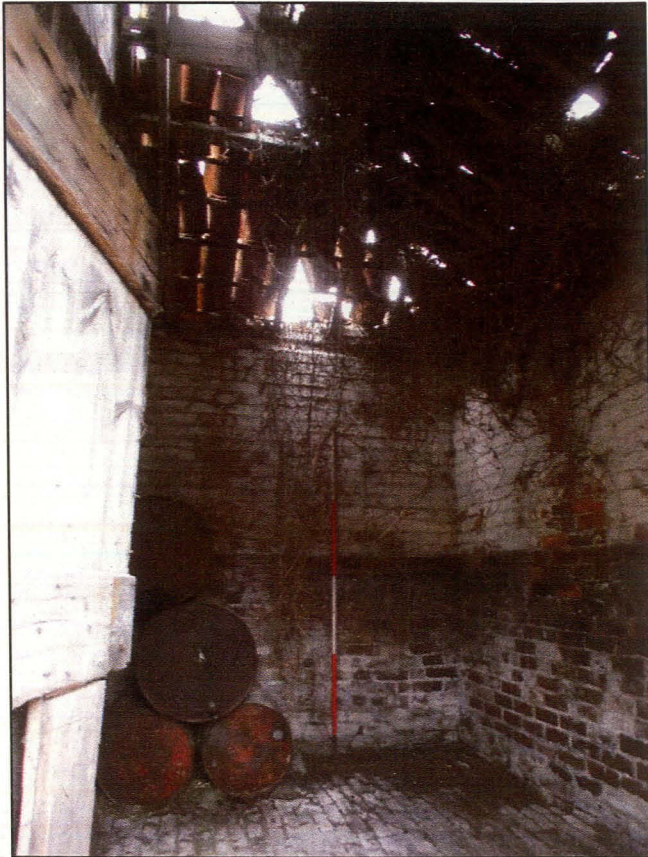


Plate 41 (Shot 77): General view of store B9 showing intruding vegetation from the roof. Looking east-south-east



Plate 42 (Shot 79): Interior shot of store B9 showing two accesses and the original brick floor. Looking west-north-west

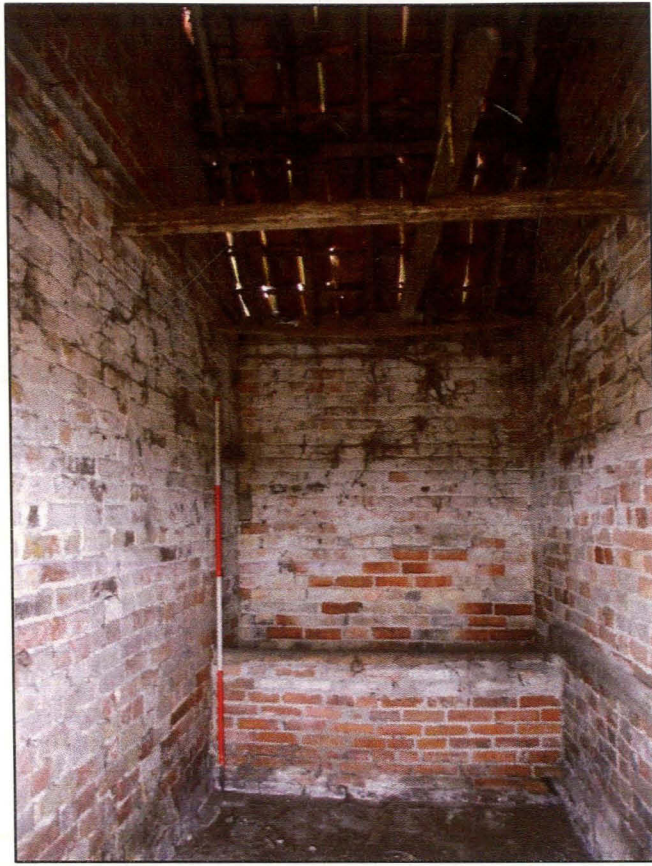


Plate 43 (Shot 81): Barn B10 showing feeding trough. Wooden beams have been installed to perhaps offer wall support. Looking west-south-west



Plate 44 (Shot 84): General interior shot of store B11. Looking north-west

Appendix 2: Photographic Archive List

Shot No	Facing	Type	Description
01	ENE	Exterior	General site shot from track leading up to the Hardings farm
02	SE	Exterior	General site shot with the pond in the foreground
03	NNE	Exterior	General site shot taken from the orchard
04	NW	Exterior	General site shot taken from the field east of the farm
05	W	Exterior	General site shot taken from the field east of the farm
06	SW	Exterior	General site shot taken from the field east of the farm
07	NW	Exterior	South elevation of Block A, north-west south-east aligned range
08	NW	Exterior	South elevation of Block A, north-west south-east aligned range
09	ENE	Exterior	WSW-facing elevation of Block A
10	SSE	Exterior	NNW-facing elevation of Block A
11	NW	Exterior	ENE-facing elevation of Animal shelter A1
12	NNW	Exterior	SSE-facing elevation of Cart shed A4
13	NNW	Interior/detail	Roof structure of A1
14	NW	Interior/detail	Representative shot of feeding trough and hay rack of A1
15	NW	Interior	General shot of store A2
16	NE	Interior	General shot of store A2
17	NE	Interior/detail	Roof structure of A2
18	NW	Interior	General shot store A3
19	NW	Interior/detail	Roof structure A3
20	NE	Exterior	WSW-facing elevation of Block B
21	NNW	Exterior	SSE-facing elevation of Block B – west range
22	NNW	Exterior	SSE-facing elevation of Block B – east range
23	NW	Exterior	WE-facing elevation of Block B – east range
24	WSW	Exterior	WE-facing elevation of Block B – Grain Dryer B7
25	WSW	Exterior	ENE-facing lean-to
26	SSE	Exterior	NNW-facing elevation of Block B and lean-to
27	SE	Exterior	NW corner of Block B
28	SE	Exterior	WSW-facing elevation of Block B – west range
29	SW	Exterior	ENE-facing elevation of A4
30	WSW	Exterior	ENE-facing elevation of Block B – west range
31	ENE	Interior	WSW-facing elevation of cart shed A3
32	ENE	Interior/detail	Roof structure A3
33	WSW	Interior	General shot of A3
34	NW	Interior	General shot of A3
35	SE	Exterior	General shot of A3
36	ESE	Exterior	General shot of A3
37	N	Exterior	SE-facing elevation of Block B – middle range with lean-to
38	NE	Exterior	SE-facing elevation of Block B – under the lean-to
39	ESE	Exterior	Block B – lean to and east range
40	ESE	Exterior	WSW-facing elevation of Block B – east range
41	SE	Exterior	WSW-facing elevation of Block B – east range
42	WSW	Interior	General shot of barn B1
43	NW	Interior	General shot of store B2
44	SE	Interior	General shot of store B2
45	SE	Interior	General shot of store B2
46	WSW	Interior	General shot of barn B3
47	SE	Interior	General shot of barn B3
48	NNE	Interior	General shot of barn B4
49	SE	Interior	General shot of barn B4
50	SW	Interior	General shot of barn B4
51	NNW	Interior/detail	Roof structure B4
52	N	Interior/detail	Roof structure B4
53	ESE	Interior	General shot threshing barn B5

Shot No	Facing	Type	Description
54	ESE	Interior/detail	Roof structure B5
55	WSW	Interior	General shot B5
56	SW	Interior	General shot B5
57	NNE	Interior	General shot B5
58	SSE	Interior/detail	Representative shot of ventilation slit in the south-east elevation
59	SW	Exterior	North-west facing elevation of B5 and B6
60	SE	Interior	General shot of barn B6
61	SE	Interior	General shot of B6
62	SW	Interior	General shot of B6
63	NW	Interior	General shot of B6
64	NE	Interior	General shot of B6
65	NE	Interior/detail	Roof structure of B6
66	SW	Exterior	General shot of NW-facing elevation of Block B
67	SW	Exterior	General shot of NW-facing elevation of Block B
68	SW	Interior	General shot of Grain-dryer B7
69	SE	Interior	General shot of Grain-dryer B7
70	WSW	Interior	General shot of Grain-dryer B7
71	ENE	Interior	General shot of Grain-dryer B7
72	WSW	Exterior	General shot of Grain-dryer B7
73	NE	Interior	General shot of barn B8
74	SE	Interior	General shot of barn B8
75	ENE	Interior	General shot of barn B8
76	SE	Interior/detail	Roof structure of B8
77	SE	Interior	General shot of store B9
78	NE	Interior/detail	Roof structure
79	WNW	Interior	General shot of B9
80	SSE	Interior/detail	Blocked up window of B9
81	WSW	Interior	General shot of barn B10
82	WSW	Interior/detail	Roof structure B10
83	ENE	Interior	General shot of barn B10
84	NW	Interior	General shot of barn B11
85	NNW	Interior	General shot of barn B11
86	NE	Interior	General shot of barn B11
87	NE	Interior	General shot of barn B11
88	NE	Interior/detail	Roof structure B11

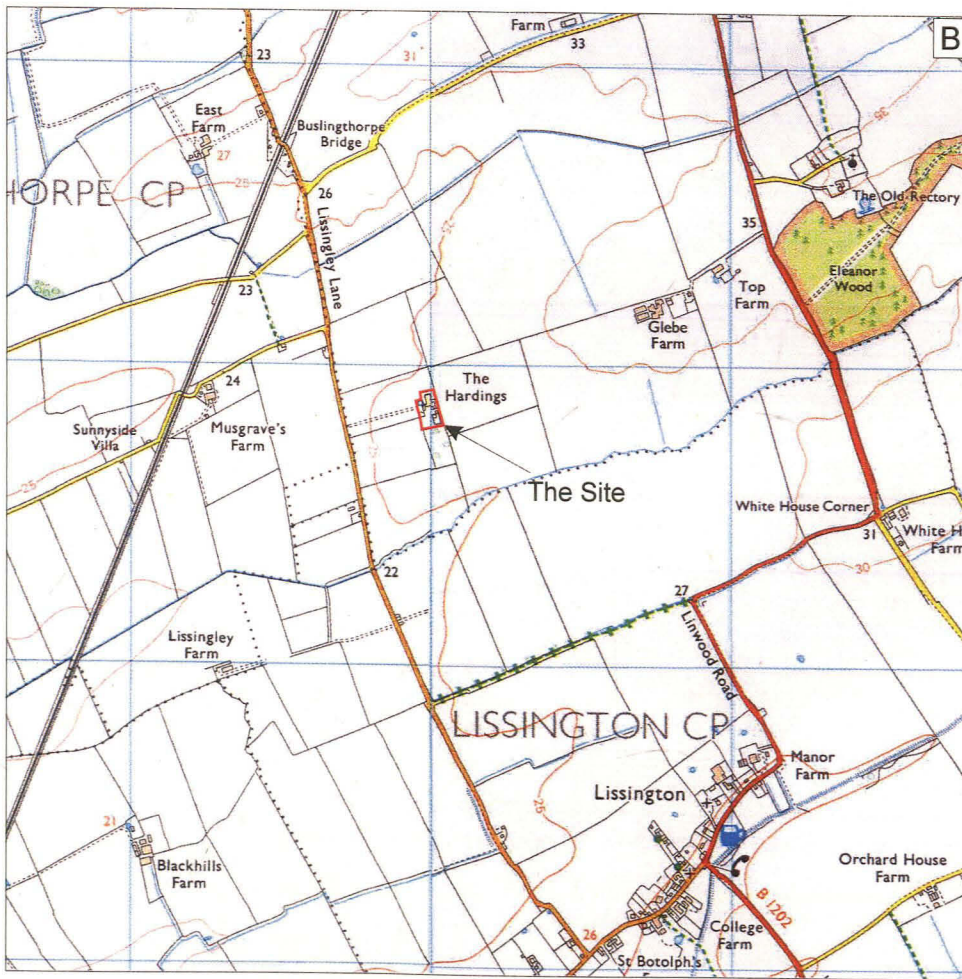
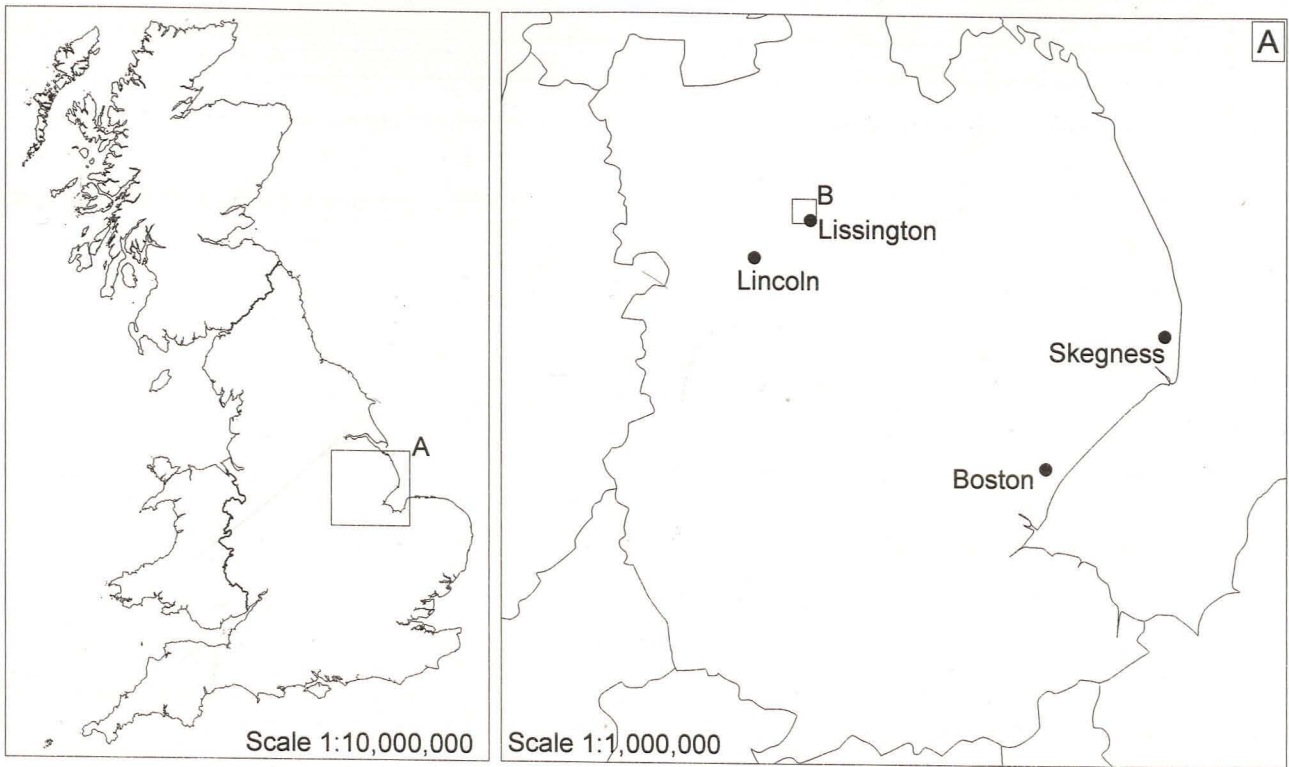


Figure 1: Site location at scale 1:25,000, with site shown in red.
 © Crown copyright 2006. All rights reserved. Licence Number A1100047330

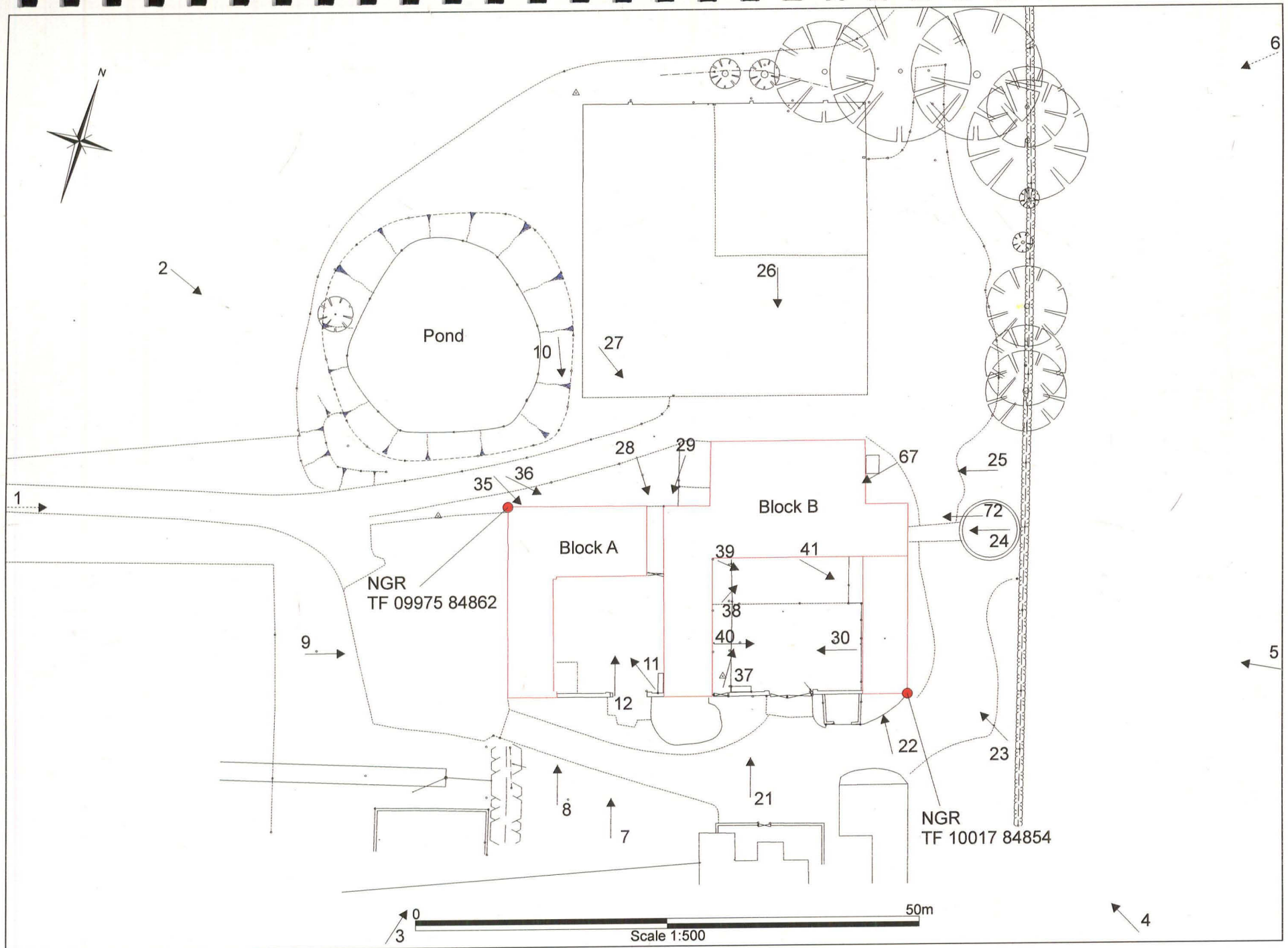


Figure 2: Site plan at scale 1.500. Numbered arrows indicate the location and orientation of all exterior photographs (listed in Appendix 2). Interior shots shown on Figure 3

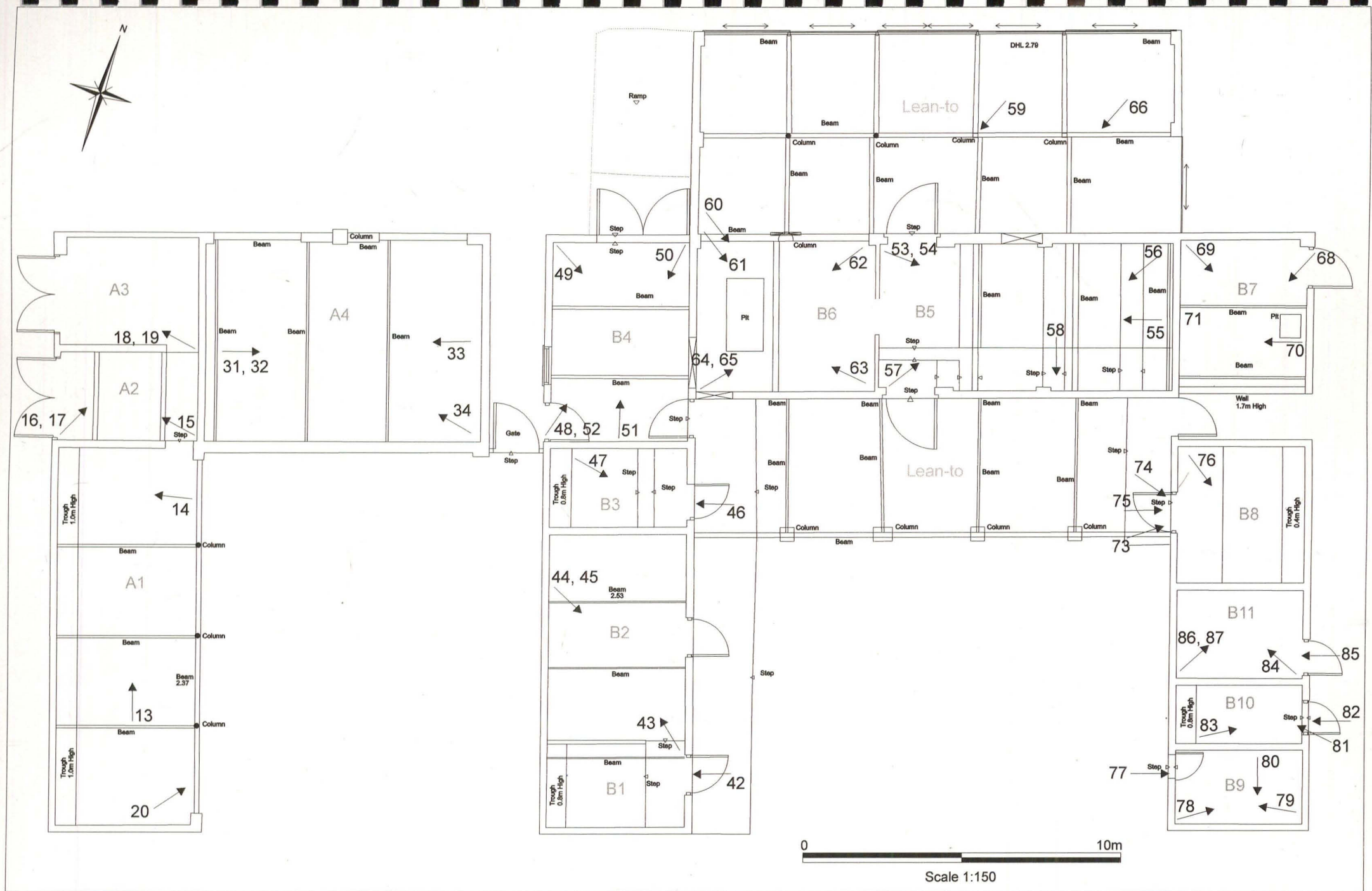
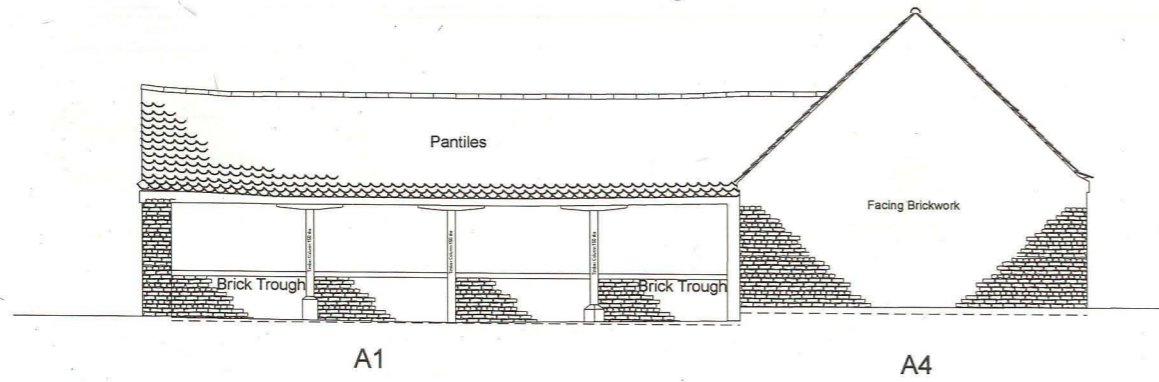
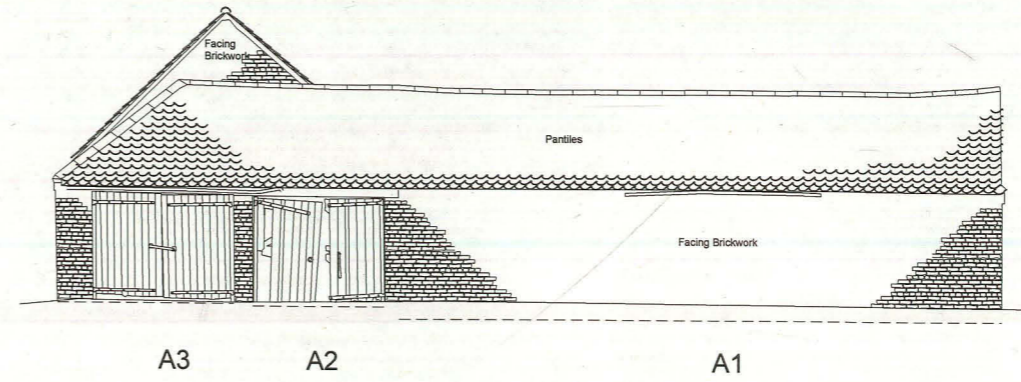


Figure 3: Ground floor plan at scale 1:150. Numbered arrows indicate the location and orientation of internal photographs (listed in Appendix 2). Exterior photographs shown on Figure 2

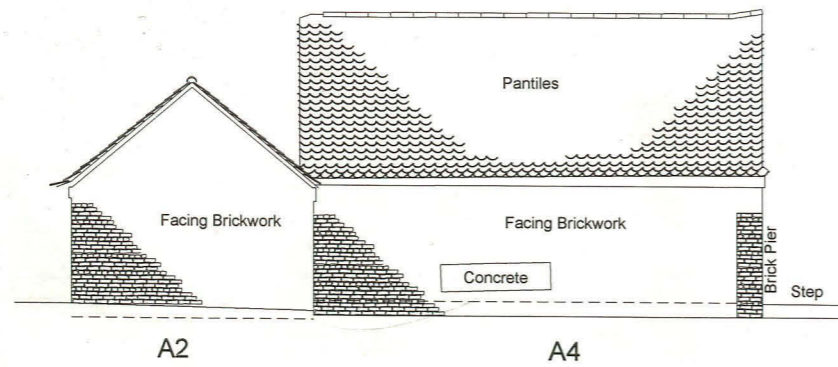
East-north-east facing elevation



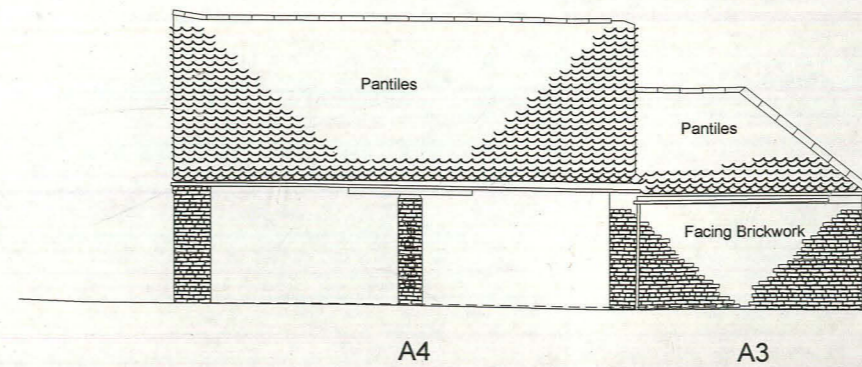
West-south-west facing elevation



South-east facing elevation



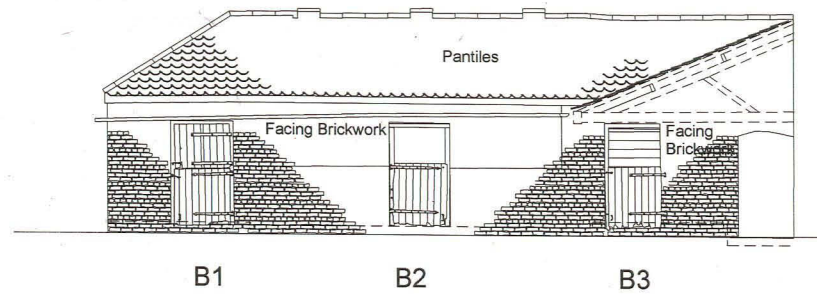
North-west facing elevation



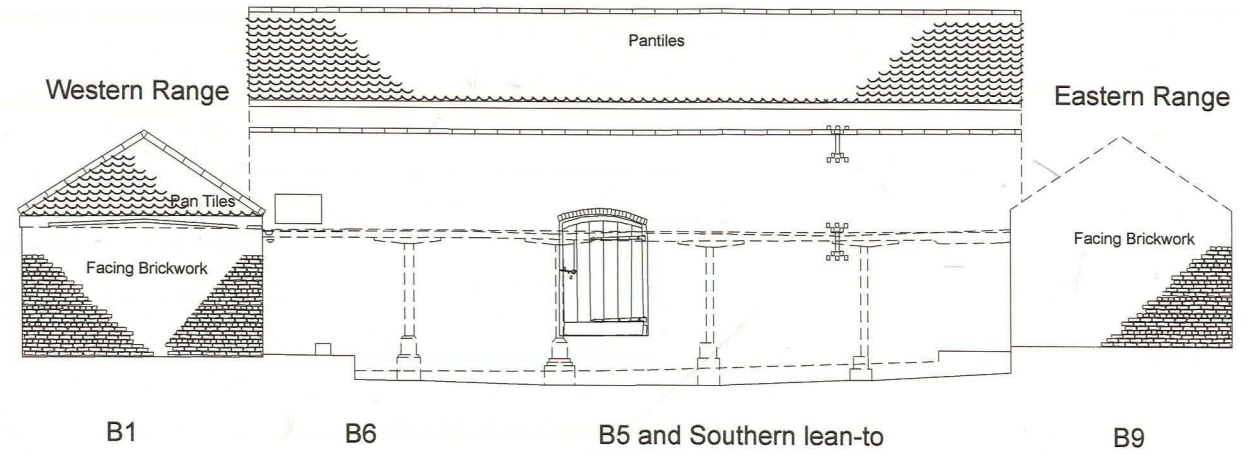
Scale 1:150

Figure 4: Block A elevations at scale 1.150

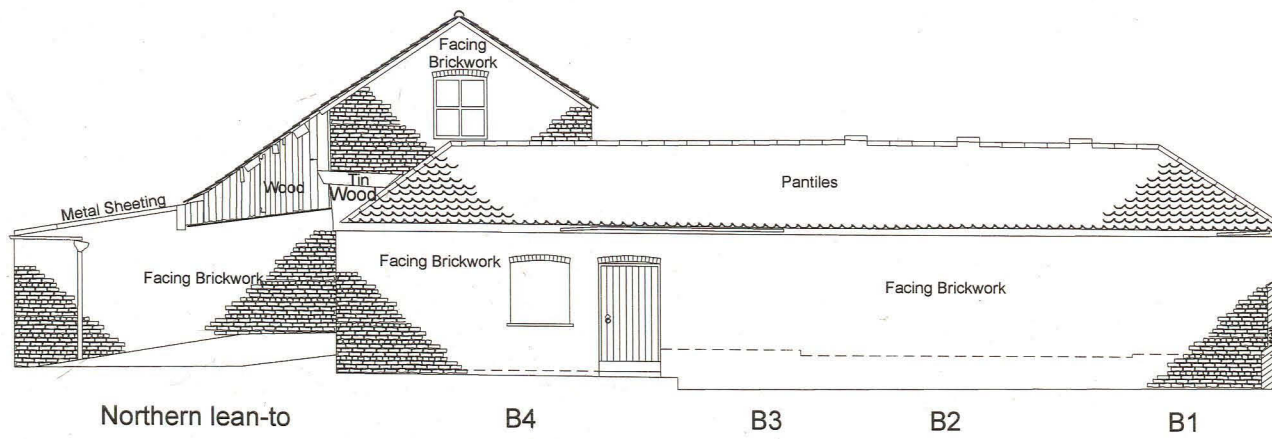
East-north-east facing elevation
Western Range



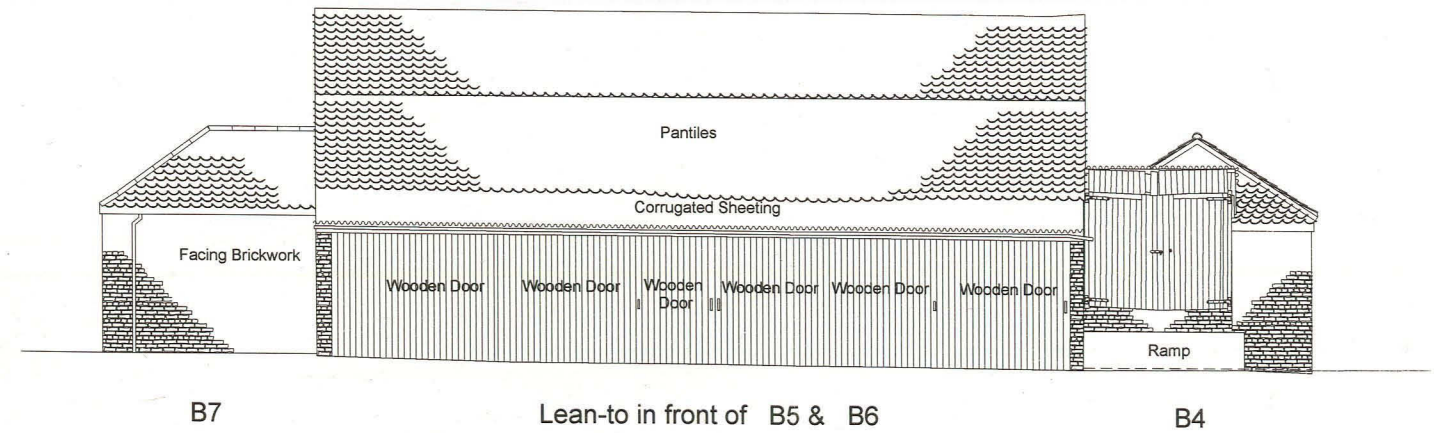
South-east facing elevation
Middle Range



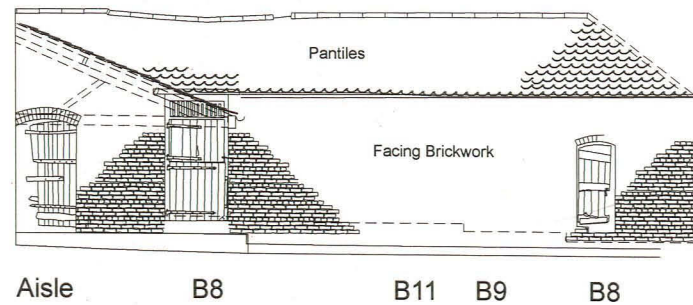
West-south-west facing elevation
Middle Range & Western Range



North-west facing elevation
Eastern Range, Middle Range & Western Range



West-south-west facing elevation
Eastern Range



East-north-east facing elevation
Eastern Range & Middle Range

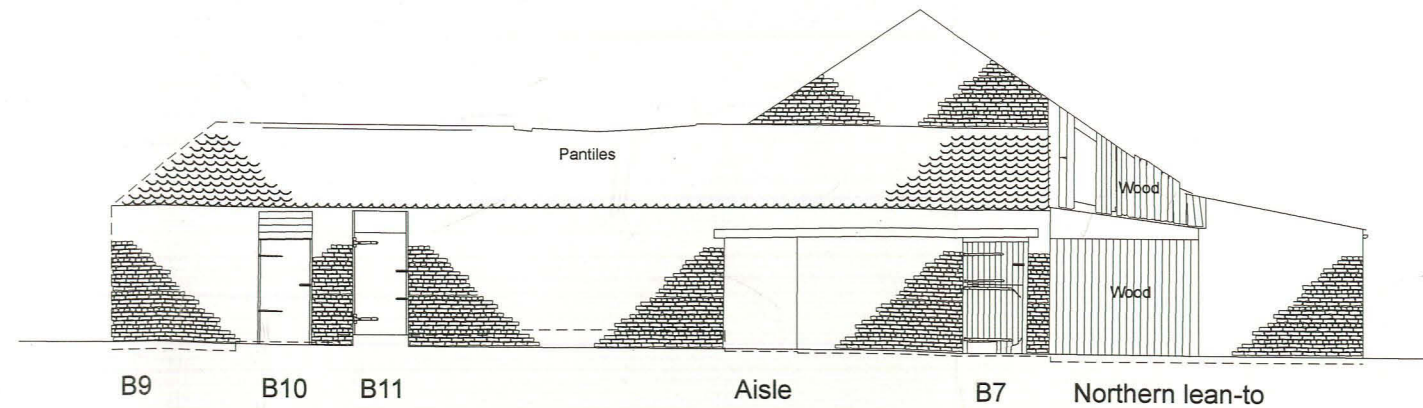


Figure 5: Block B elevations
at scale 1.150

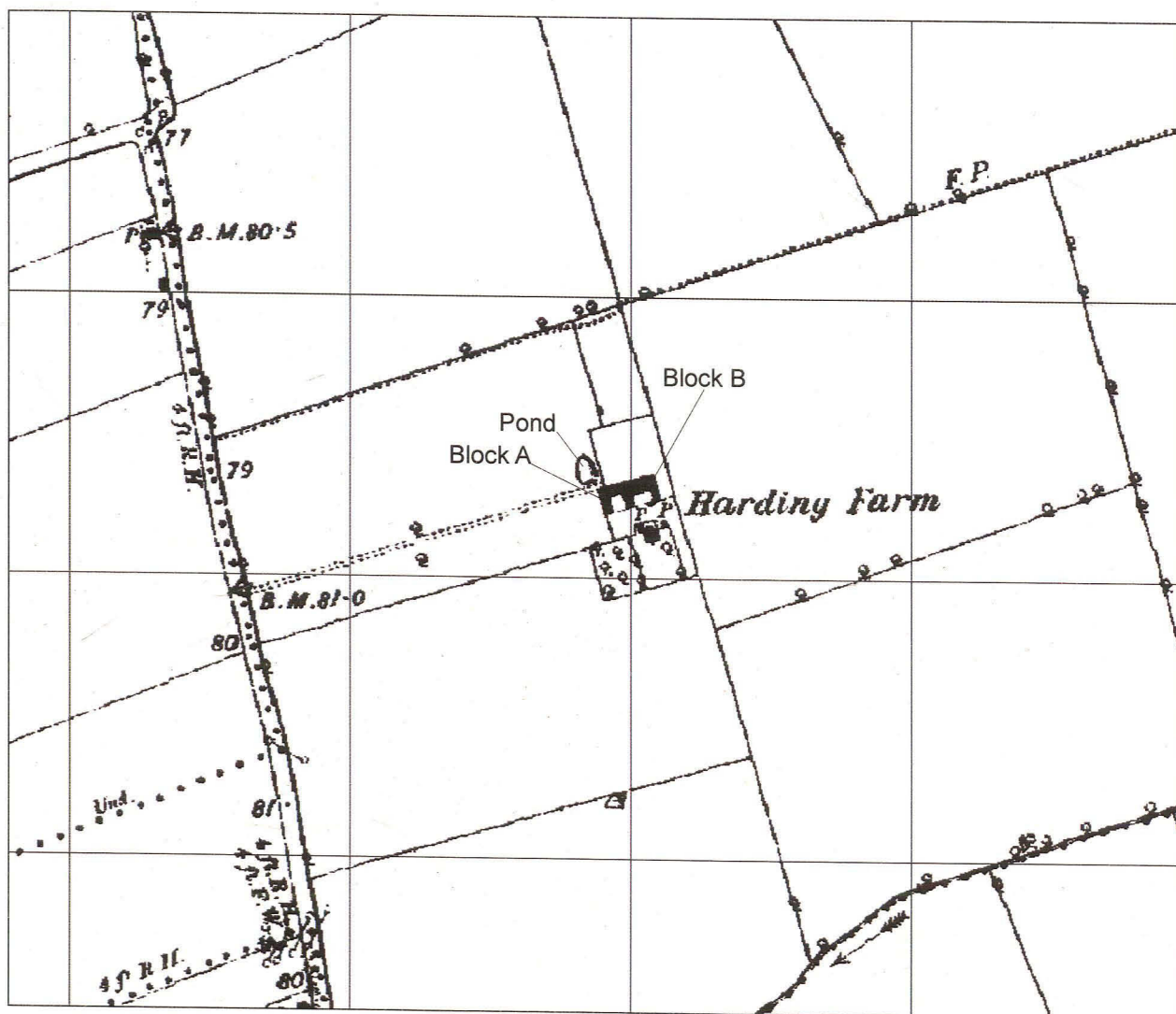
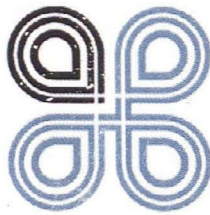


Figure 6: First Edition 6' scale Ordnance Survey map (1891) of Harding Farm at scale 1:5000



Allen Archaeology Limited

Head Office

Unit 1C
Branston Business Park
Lincoln Road
Branston
Lincolnshire
LN4 1NT
Tel/Fax: +44 (0) 1522 794400
Email: info@allenarchaeology.co.uk
Website: www.allenarchaeology.co.uk

AAL South

International House
Southampton International Business Park
George Curl Way
Southampton
SO18 2RZ
Tel: +44 (0) 800 610 2555
Email: info@allenarchaeology.co.uk
Website: www.allenarchaeology.co.uk

Company Registered in England and Wales No:

6935529