

**The Old Rectory
Halton Holegate
Lincolnshire**

Historic Building Record

**David S. Watt
Hutton+Rostron Environmental Investigations Limited**

August 2008

1. ARCHITECTURAL OR HISTORIC SIGNIFICANCE

The Old Rectory is listed (grade (II)) as being of special architectural or historical interest:

Halton Hologate
Northorpe Road (east side)
The Old Rectory
Grade II

Former rectory, now house. Early C18, altered early C19 and extended mid C19. Red brick with yellow brick details, rendered C18 front with brick coped gable, diminishing coursed slate roof, gable and ridge stacks. Parallel range plan. 2 storey plus attics, 5 bay C18 range with plinth and gable band, 2 glazed doors and 3 tall glazing bar sashes covered by open early C17 verandah with pressed cast iron supports, circles in spandrels and shaped lead roof. To first floor 5 glazing bar sashes and in the roof 2 leaded dormers with glazing bar sashes. To the left a canted C19 triple bay with hipped slate roof, 3 glazing bar sashes to each floor and a gabled dormer to the roof. In the right rear a first floor ballroom with 2 large margin light sashes. At the left side a gabled range with 2 glazing bar sashes to each floor, the upper with polychromatic herringbone tympanum. To left a gabled 2 storey porch with similar details. Early C19 stair with turned balusters and wreathed handrail and C19 book cases. Right hand bedroom has full height C18 panelling with matching cupboards and cornice, and wooden fireplace surround.

It is not known whether other heritage or environmental designations affect the building or site.

2. HISTORICAL ASSOCIATIONS

The Old Rectory was the home of Rev. Thomas Hardwicke Rawnsley, a close friend of Dr Tennyson (father of Alfred Tennyson) and father of Drummond Rawnsley, a long-time friend of Tennyson who married Alfred (1809-92) to Emily Sarah Sellwood (1813-96) of Horncastle when he was vicar at Shiplake (Oxfordshire) in 1850 (source: Tennyson in East Lindsey, Lincolnshire County Council).

One of the current first-floor bedrooms is known as the Tennyson Room.

3. OUTLINE CHRONOLOGICAL HISTORY

Early C18	Date of original construction (source: list description).
Early C19	Alteration(s) (source: list description).
Mid-C19	Extension(s) (source: list description).
1872	Rectory valued in King's Books £16.17s.10d and now £352...good residence with 16 acres of glebe' (source: <i>White's Directory</i> , 1872).
1876	'The living is a rectory, yearly value £320, in the gift of the Baroness Willoughby De Eresby, and held by the Reverend Robert Drummond Burrell Rawnsley' (source: <i>Kelly's Directory</i> , 1876).
1900	'The living is a rectory, net yearly value £178, including 202 acres of glebe and residence, in the gift of the Earl of Ancaster, and held by the Reverend Charles Penrose Disbrowe' (source: <i>Kelly's Directory</i> , 1900).
1926	'The living is a rectory, net yearly value £487 including glebe, with residence in the gift of the Bishop of Lincoln. Held since 1921 by the Reverend William Ernest Taylor' (source: <i>Kelly's Directory</i> , 1926).
1 March 1955	Mortgages under Gilbert's Acts, £20 mortgage for 'purpose of or towards making

improvements at the parsonage house and offices and paying the architect's charges and the diocesan registrar's fee (source: Lincoln archive / MGA1449 / accessed 15 August 2008).

4. MAP RECORD

- | | |
|------|---|
| 1906 | Uncoloured Ordnance Survey, second edition, 1906, sheet 83(5) (Fig. 1). |
| 1906 | Coloured Ordnance Survey, second edition, 1906, sheet 83(5) (Fig. 2). |

5. DRAWING RECORD

- | | |
|--------|--|
| c.2006 | Schematic floor plans (source: Savills particulars) (Fig. 3). |
| 2008 | Existing north elevation, 1:50 scale at A3 (source: H+R) (Fig. 4). |
| 2008 | Existing east elevation, 1:50 scale at A3 (source: H+R) (Fig. 5). |
| 2008 | Existing south elevation, 1:50 scale at A3 (source: H+R) (Fig. 6). |
| 2008 | Existing west elevation, 1:50 scale at A3 (source: H+R) (Fig. 7). |

6. PHOTOGRAPHIC RECORD

- | | |
|---------|---|
| c.1934 | Post card showing sunken road (B1195) between Old Rectory and St Andrew's Church spanned by pedestrian bridge (source: www.spilsby.info) (Fig. 8). |
| c.1970s | Framed aerial photograph of Old Rectory (source: owner) (Fig. 9). |
| 2008 | Elevation photographs (source: H+R) (Figs. 10–19). |

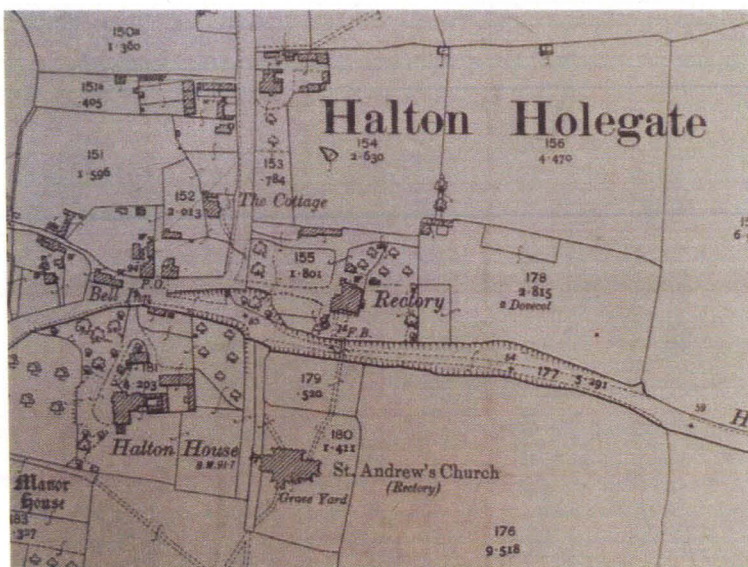


Figure 1
Coloured Ordnance Survey, second edition, 1906, sheet 83(5) showing Rectory with extensive grounds and outbuildings, foot bridge over road to church (see Fig. 8), and dovecote in field to east.



Figure 2
Coloured Ordnance Survey, second edition, 1906, sheet 83(5) showing Rectory with extensive grounds and outbuildings, foot bridge over road to church (see Fig. 8), and dovecote in field to east. Field appears to be in same ownership as Rectory.

The Old Rectory, Halton Holegate, Lincolnshire
 Gross internal area (approx.)
 554 sq m (5971 sq ft)
 For identification purpose only. Not to scale.
 © inhouse. Drawing ref. dg19043870

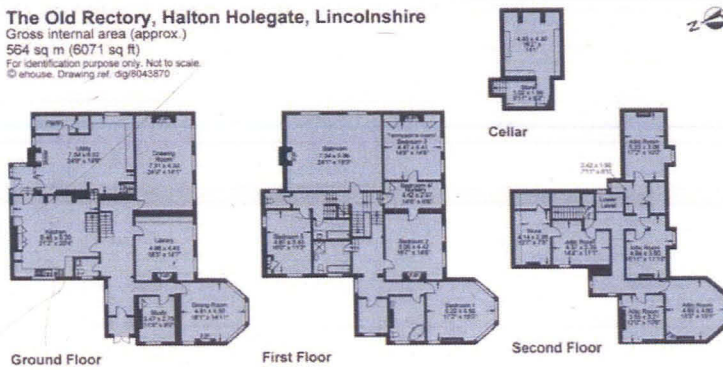


Figure 3
 Schematic floor plans.

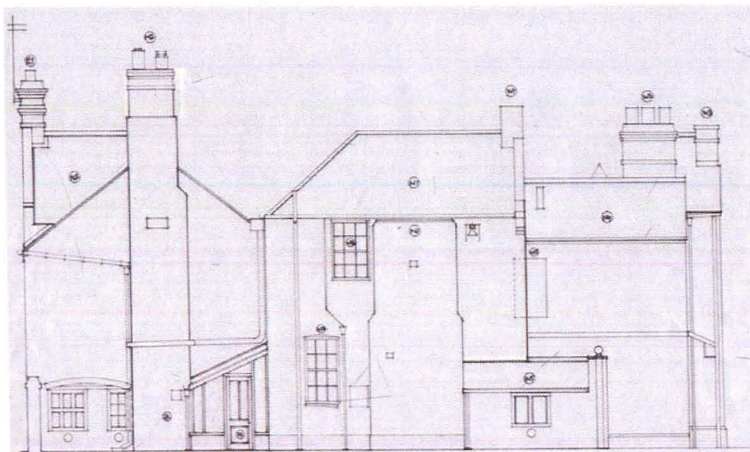


Figure 4
 Existing north elevation.

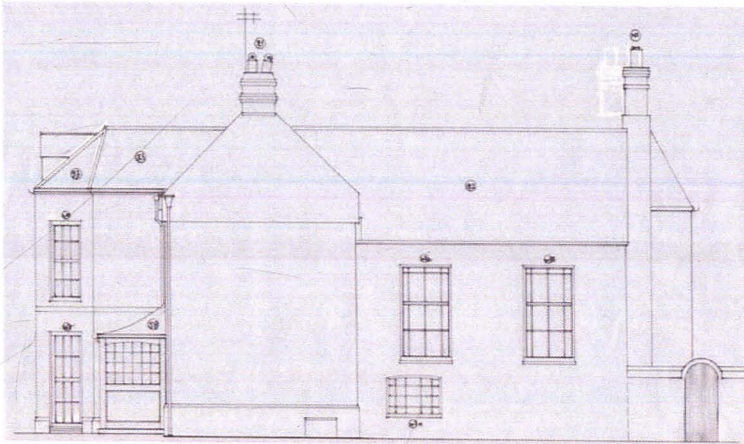


Figure 5
Existing east elevation.

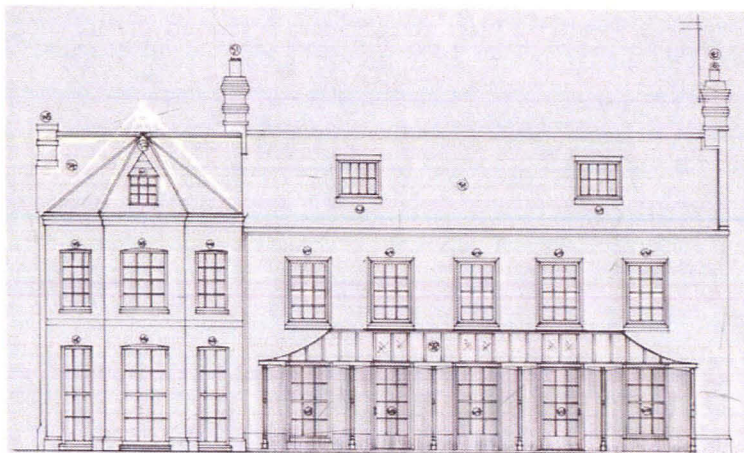


Figure 6
Existing south elevation.

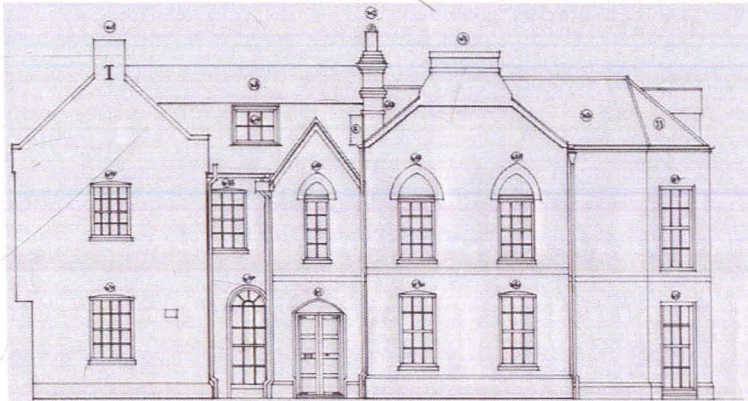


Figure 7
Existing west elevation.



Figure 8
Post card showing sunken
road (B1195) between old
Rectory and St Andrew's
Church spanned by
pedestrian bridge.



Figure 9
Framed aerial photograph
of Old Rectory.



Figure 10
Principal west elevation
from site entrance off
Northorpe Road.



Figure 11
General arrangement from
south-west showing
polygonal brick bay to
south-east and veranda to
rendered south elevation.



Figure 12
South elevation showing
polygonal brick bay to
south-east.



Figure 13
South elevation showing
render behind veranda.



Figure 14
Veranda to south elevation
from south-east.



Figure 15
East elevation.



Figure 16
General arrangement from
north-east showing phased
construction and abutting
garden wall.



Figure 17
North elevation showing
east gable with external
chimney stack and lean-to
entrance porch.



Figure 18
North elevation showing
west block with truncated
external chimney stack and
lean-to garden shed.



Figure 19
Garden building to south-
west of house.

