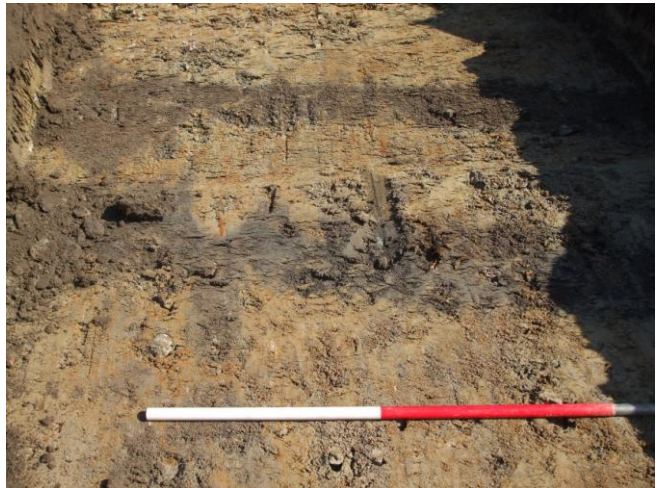


# Residential Development North of B9119, Echt, Westhill



21 April 2011

# **Residential Development North of B9119, Echt, Westhill**

## **CONTENTS**

1	INTRODUCTION	3
2	ARCHAEOLOGICAL BACKGROUND	4
3	THE ARCHAEOLOGICAL EVALUATION	5
4	RECOMMENDATIONS	6
5	ACKNOWLEDGEMENTS	6
	APPENDIX 1 PHOTOGRAPHS	7
	APPENDIX 2 FEATURES	14

## **ILLUSTRATIONS**

Cover Top Trench 4 facing west showing deep plough marks  
Bottom Trenches for ceramic field drains F10 and F11

III 1	Location plan	3
III 2	Trench plan	4
III 3	Plan of features	4

## **SUMMARY**

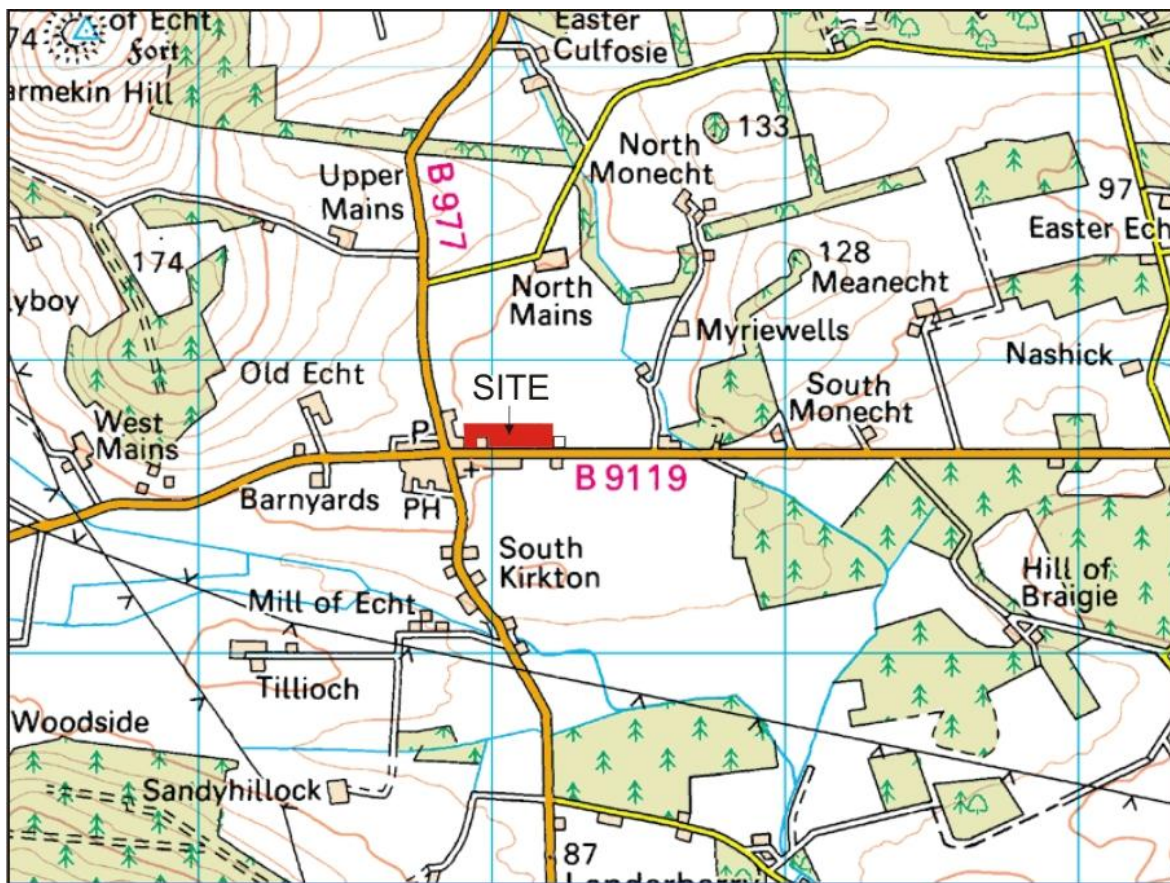
A 7% archaeological evaluation took place on 18-19th April 2011 at the 2.4 hectare site north of the B9119 east of Echt. No significant archaeological features or finds were uncovered and it is recommended that no further work is required during this development.

## 1 INTRODUCTION

A proposed residential development north of B9119, Echt, Westhill, AB32 7AA is planned on rough grazing land between Bank House to the west and Myriewell Cottages to the east. The area is 1.6 hectares in size and is located at NJ 74151 05716, at a height of 95-100m OD in the parish of Echt.

The work was commissioned by Allan Rae and Stuart Foster, Kirkwood Homes and the work relates to Aberdeenshire Council Planning reference is G/APP/2005/4515 for construction of 30 dwellings (Condition 19) dated 07/11/06.

This archaeological work follows PAN 42, Scottish Planning Policy and the Institute for Archaeologists (IFA) Code of Conduct.



III 1 Location plan (Contains Ordnance Survey data © Crown copyright and database right 2010)



## 2 ARCHAEOLOGICAL BACKGROUND

No archaeological interventions have taken place in the vicinity of this site and there are no Scheduled Ancient Monuments in the vicinity of the current development area. Echt Kirk and associated buildings appears on Pont's map of the late 16th century. General Roy's mid 18th-century map shows Old Echt, Kirkton of Echt Church as well as Sunhoney and the Barmekin but no settlement in the area of the current development. At that date Echt was dispersed and Old Echt was located 500m WNW of the current village. There are no buildings in the area under discussion on the 1st or 2nd Edition Ordnance Survey maps.

Several sites of archaeological and historical interest survive in the vicinity of the development location. These include the Barmekin of Echt hillfort, 1.5km NW of the village, New Wester Echt stone circle 2km north, Sunhoney stone circle 2km to the west, cairns, standing stones and areas of hut-circles.

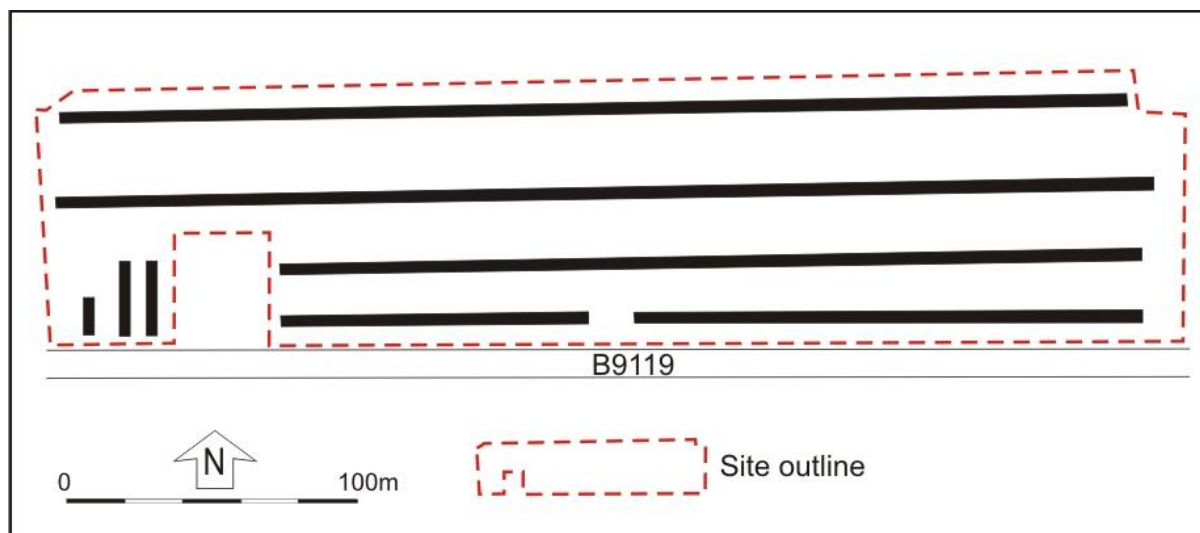
The closest known archaeological sites include an area of rig and furrow at North Kirkton Wood 500m SE of current site. Myriewell Wood quarries are depicted on 1867 First Edition Ordnance Survey map 200m east of the current site.

Monecht House, the former Free Church manse stands 170m east of current site and the adjacent Kirk Cottages was the Free Kirk. Several farmsteads in the area include Myriewell Farmstead 200m NE of current site, North Main farmstead 500m north of current site, North Mains farmstead (NJ70NW38) 500m north of site and Upper Mains 500m NW. A granite boundary stone 145m WSW of Monecht House bears an incised letter E standing for Echt estate. The stone is not marked on either the 1st or the 2nd edition OS maps.

Echt is a village and burgh to the west and south of the development site includes nine listed buildings. It was established as a burgh of barony in 1698. The site of Kirkton of Echt Church which dates to the early 13th century is 500m SSW of the development site.

### 3 THE ARCHAEOLOGICAL EVALUATION

A 7% archaeological evaluation was carried out in the proposed development area using a tracked machine and a 2m wide toothless ditching bucket.

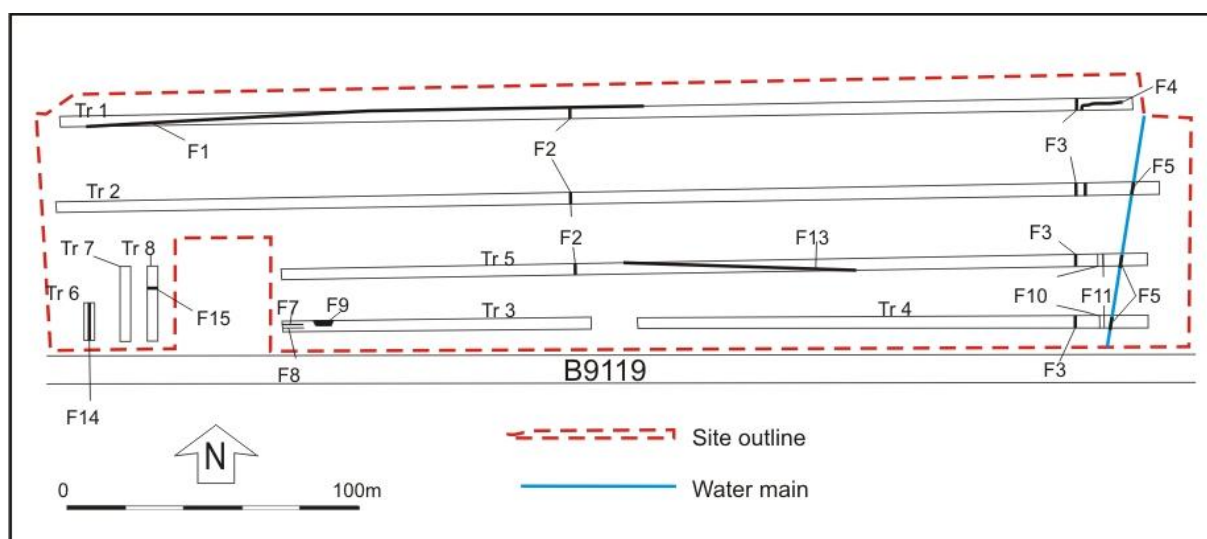


III 2 Trench plan

Eight trenches were excavated across the proposed development area and fifteen features were recorded. They included stone drains (trenches cut into the natural subsoil and filled with stones for drainage eg F7, F8) as well as ceramic drainpipe laid in narrow trenches (F10, F11). A water main at the east of the site (F5) was recorded and deep modern W-E plough marks were recorded in most trenches.

The extreme SW of the site between Bank House and the old post office had been a garden and there was no evidence that a building had stood in this area.

All the features are associated with 19th and 20th-century farming (III 3) and are recorded in summary in Appendix 2 (below) and in archive.



III 3 Plan of features

## **4 RECOMMENDATIONS**

It is recommended that no further work is required during the current development but the final decision remains with Aberdeenshire Council.

## **5 ACKNOWLEDGEMENTS**

Thanks to Allan Rae and Stuart Foster, Kirkwood Homes; Moira Greig and Bruce Mann, Aberdeenshire Archaeology Service.

Cameron Archaeology  
45 View Terrace  
Aberdeen  
AB25 2RS  
01224 643020  
07581 181057  
[cameronarch@btinternet.com](mailto:cameronarch@btinternet.com)  
[www.cameronarchaeology.com](http://www.cameronarchaeology.com)  
Company registration no 372223 (Scotland)  
VAT registration no 990 4373 00

## Appendix 1

### Photographs

Photo no	Trench	Description	Facing
DSCF0303		Site prior to evaluation	W
DSCF0304		Site prior to evaluation	E
DSCF0305	1	West end	W
DSCF0306	1	West end	W
DSCF0307	1	West end	SW
DSCF0308	1	West end showing F1	SW
DSCF0309	1	West end showing F1	SW
DSCF0310	1	West end showing F1	W
DSCF0311	1	West end showing F1	W
DSCF0313	1	West end showing F1	W
DSCF0314	1	West end showing F1	W
DSCF0315	1	West end showing F1	W
DSCF0316	1	West end showing F1	WSW
DSCF0317	1	Tr 1 showing F1	W
DSCF0318	1	Tr 1 showing F1	W
DSCF0319	1	Tr 1 showing F1	W
DSCF0320	1	Tr 1	N
DSCF0321	1	Tr 1	N
DSCF0322	1	F2	W
DSCF0323	1	F2	S
DSCF0324	1	F2	S
DSCF0325	1	F2	S
DSCF0326	1	F2	SW
DSCF0327	1	Tr 1	SW
DSCF0328	1	Tr 1	W
DSCF0329	1	Tr 1	W
DSCF0330	1	Tr 1	W
DSCF0331	1	Tr 1	SW
DSCF0332	1	Tr 1	SW
DSCF0333	1	F3 (foreground) F4 (background)	E
DSCF0340	1	East end of trench	W
DSCF0341	1	East end of trench	W
DSCF0342	2	East end of trench	W
DSCF0343	2	East end of trench	NW
DSCF0344	2	F5 water main trench	W
DSCF0345	2	Deep plough marks	W
DSCF0346	2	Deep plough marks	E
DSCF0347	2	Deep plough marks	W
DSCF0348	2	F4	W
DSCF0349	2	F4	S

DSCF0350	2	F4 showing Tr 1 (background)	N
DSCF0351	2	F3	W
DSCF0352	2	F3	W
DSCF0354	2	Deep plough marks	E
DSCF0355	2	Deep plough marks	W
DSCF0356	2	Centre of Tr 2	E
DSCF0357	2	F2	W
DSCF0358	2	F2	W
DSCF0359	2	West end	E
DSCF0360		Site from road	ENE
DSCF0361		Site from road	NE
DSCF0362		Site from road	NE
DSCF0363	2	West end	E
DSCF0364	2	West end	E
DSCF0365	2	West end	ENE
DSCF0366	3	West end	E
DSCF0367	3	West end	NE
DSCF0368	3	West end	NE
DSCF0369	3	West end	E
DSCF0370	3	Section	N
DSCF0371	3	F7 (right) F8 (left)	W
DSCF0372	3	F7 (right) F8 (left)	W
DSCF0373	3	F9 (foreground) F7 (right) F8 (left)	W
DSCF0374	3	Centre of trench	NW
DSCF0375	3	Centre of trench	NW
DSCF0378	3	East end of trench	W
DSCF0379	3	East end of trench	W
DSCF0380	3	East end of trench	W
DSCF0384	4	West end	E
DSCF0385	4	West end	E
DSCF0386	4	West end	W
DSCF0387	4	West end	W
DSCF0388	4	Trench 4	E
DSCF0389	4	Trench 4	W
DSCF0390	4	Trench 4	W
DSCF0391	4	Trench 4	W
DSCF0392	4	Trench 4	N
DSCF0393	4	Trench 4	NE
DSCF0394	4	Trench 4	NW
DSCF0395	4	F3 showing deep modern plough marks	E
DSCF0396	4	F3 showing deep modern plough marks	E
DSCF0397	4	F3 showing deep modern plough marks	S
DSCF0398	4	F3 showing deep modern plough marks	W
DSCF0399	4	F10 (foreground) F11 (background)	E
DSCF0400	4	F10 (foreground) F11 (background)	E



DSCF0401	4	F5 water main trench	E
DSCF0402	4	F5 water main trench	E
DSCF0403	4	East end of trench	W
DSCF0405	5	East end of trench	W
DSCF0406	5	F12	W
DSCF0407	5	F12	W
DSCF0408	5	F12	W
DSCF0409	5	Deep modern plough marks	W
DSCF0410	5	F13 and deep plough marks	E
DSCF0411	5	F13 and deep plough marks	E
DSCF0412	5	F13	E
DSCF0413	5	F13	E
DSCF0414	5	F2	E
DSCF0415	5	F2	E
DSCF0416	5	West end of trench	E
DSCF0417	5	West end of trench	E
DSCF0418	5	West end of trench	E
DSCF0419	6	F14	N
DSCF0420	6	F14	N
DSCF0421	6	Trench	NW
DSCF0422	7	South end of trench	N
DSCF0423	7	South end of trench	N
DSCF0424	7	South end of trench through garden gates	N
DSCF0425	7	South end of trench through garden gates	N
DSCF0426	7	north end of trench	S
DSCF0427	8	South end of trench	N
DSCF0428	8	South end of trench	NW
DSCF0429	8	South end of trench	NW
DSCF0430	8	F15 ?garden wall foundation	N
DSCF0431	8	F15 ?garden wall foundation	W
DSCF0432	8	F15 ?garden wall foundation	S
DSCF0433	8	Trench 8	NW
DSCF0434	8	Trench 8	NE
DSCF0435		Site from road (Trench 3 foreground)	NE
DSCF0436		Site from road (Trench 3 foreground)	E
DSCF0437		Site from road (Trench 3 foreground)	E



DSCF0303



DSCF0304



DSCF0305



DSCF0306



DSCF0307



DSCF0309



DSCF0310



DSCF0311



DSCF0313



DSCF0314



DSCF0315



DSCF0316



DSCF0317



DSCF0318



DSCF0319



DSCF0320



DSCF0321



DSCF0322



DSCF0323



DSCF0324



DSCF0325



DSCF0326



DSCF0327



DSCF0328



DSCF0329



DSCF0330



DSCF0331



DSCF0332



DSCF0333



DSCF0340



DSCF0341



DSCF0342



DSCF0343



DSCF0344



DSCF0345





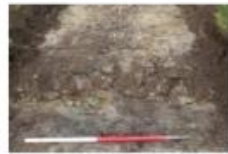




DSCF0405



DSCF0406



DSCF0407



DSCF0408



DSCF0409



DSCF0410



DSCF0411



DSCF0412



DSCF0414



DSCF0415



DSCF0416



DSCF0417



DSCF0418



DSCF0419



DSCF0420



DSCF0421



DSCF0422



DSCF0423



DSCF0424



DSCF0425



DSCF0426



DSCF0427



DSCF0428



DSCF0429



DSCF0430



DSCF0431



DSCF0432



DSCF0433



DSCF0434



DSCF0435



DSCF0436



DSCF0437



## APPENDIX 2 FEATURES

Feature	Trench	Description
F1	1	W-E stone drain 20cm wide, 10cm deep cut into clay subsoil
F2	1, 2, 5	N-S trench 20cm wide filled with stone, stone drain
F3	1, 2, 4, 5	N-S trench 20cm wide filled with stone, stone drain
F4	1, 2	Stone drain 25cm wide
F5	1, 4, 5	Water main service trench 1m wide filled with redeposited natural subsoil
F6	1	Deep W-E plough marks
F7	3	W-E stone-filled trench 20cm wide 2m long cut into clay subsoil
F8	3	W-E stone-filled trench 20cm wide 2m long cut into clay subsoil
F9	3	Trench 1m wide, 5m long filled with stone, fragments of china - drain sump?
F10	4, 5	Ceramic drain pipe in trench 15cm wide
F11	4, 5	Ceramic drain pipe in trench 15cm wide
F12	5	Deep W-E plough marks
F13	5	Stone drain 30cm wide
F14	6	Trench 50cm wide, 20cm deep filled with stone and sand - garden feature? stone drain
F15	8	Trench 50cm wide filled with stone - drain or foundation for W-E garden wall?