

Land at Airyhall Road, Aberdeen, AB15 7TF



Alison Cameron
Cameron Archaeology
15 January 2012

CONTENTS

ILLUSTRATIONS	2
SUMMARY	2
1 INTRODUCTION	3
2 ARCHAEOLOGICAL BACKGROUND	5
3 THE ARCHAEOLOGICAL EVALUATION	6
4 RECOMMENDATIONS	9
5 REFERENCES	9
6 ACKNOWLEDGEMENTS	9
APPENDIX 1 PHOTOGRAPHS.....	10
APPENDIX 2 FEATURES.....	14

ILLUSTRATIONS

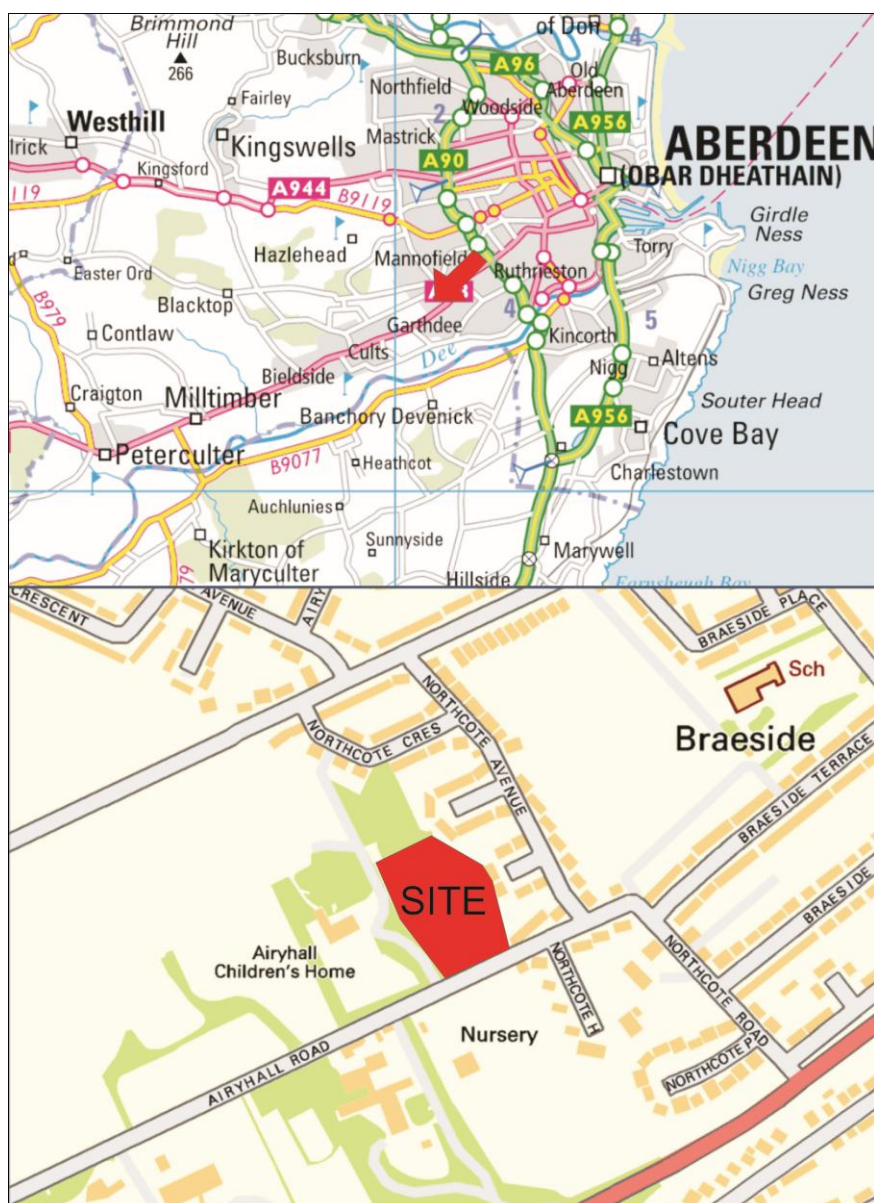
Illus 1 Location plan.....	3
Illus 2 Aerial photograph of the proposed development site with site outline	4
Illus 3 Site outline on First Edition Ordnance Survey	5
Illus 4 Plan showing trenches with Airyhall House	6
Illus 5 Plan showing features excavated	7
Illus 6 Quarry pit F12 facing west	8
Illus 7 Airyhall House facing WNW	8

SUMMARY

Ten trenches were excavated on 12-13 January 2012 during a 7% archaeological evaluation of this 1 hectare plot which has planning permission for residential accommodation (P110020). Three quarry pits were recorded which had probably been dug to extract building materials for the construction of Airyhall House but no other significant archaeological remains were uncovered. It is recommended that no further archaeological work is required prior to this development.

1 INTRODUCTION

1.1 This site is c 1 hectare in size and an application was approved for a proposed residential development of 20 units (Aberdeen City Council planning reference P110020) on 8 December 2011 with a standard archaeology condition (condition 9). The land is in Aberdeen parish, the NGR for the site is NJ 90818 03948 and it lies at 70-80m OD. The site is located on the north side of Airyhall Road, approximately 70 metres to the west of the junction with Northcote Avenue and comprises two fields. The site slopes up gradually from the SE to the NW. To the east of the site is a residential area comprising mostly 1½ storey semi-detached houses. To the north is an area of public open space that is mostly wooded. To the west are the extensive wooded grounds of Airyhall House, a Victorian mansion which was redeveloped a few years ago as retirement flats. To the south and across Airyhall Road is the recently constructed International School of Aberdeen. The work was commissioned by Dougal Morgan, The William Cowie Partnership for BANCON.



Illus 1 Location plan (Contains Ordnance Survey data © Crown copyright 2010).

- 1.2 All the archaeological work has been carried out in the context of Scottish Planning Policy (SPP) Planning Advice Note (PAN 2/2011) and Scottish Historic Environment Policy (SHEP), which state that archaeological remains should be regarded as part of the environment to be protected and managed.



Illus 2 Aerial photograph of the proposed development site with site outline (red) (copyright Google)

2 ARCHAEOLOGICAL BACKGROUND

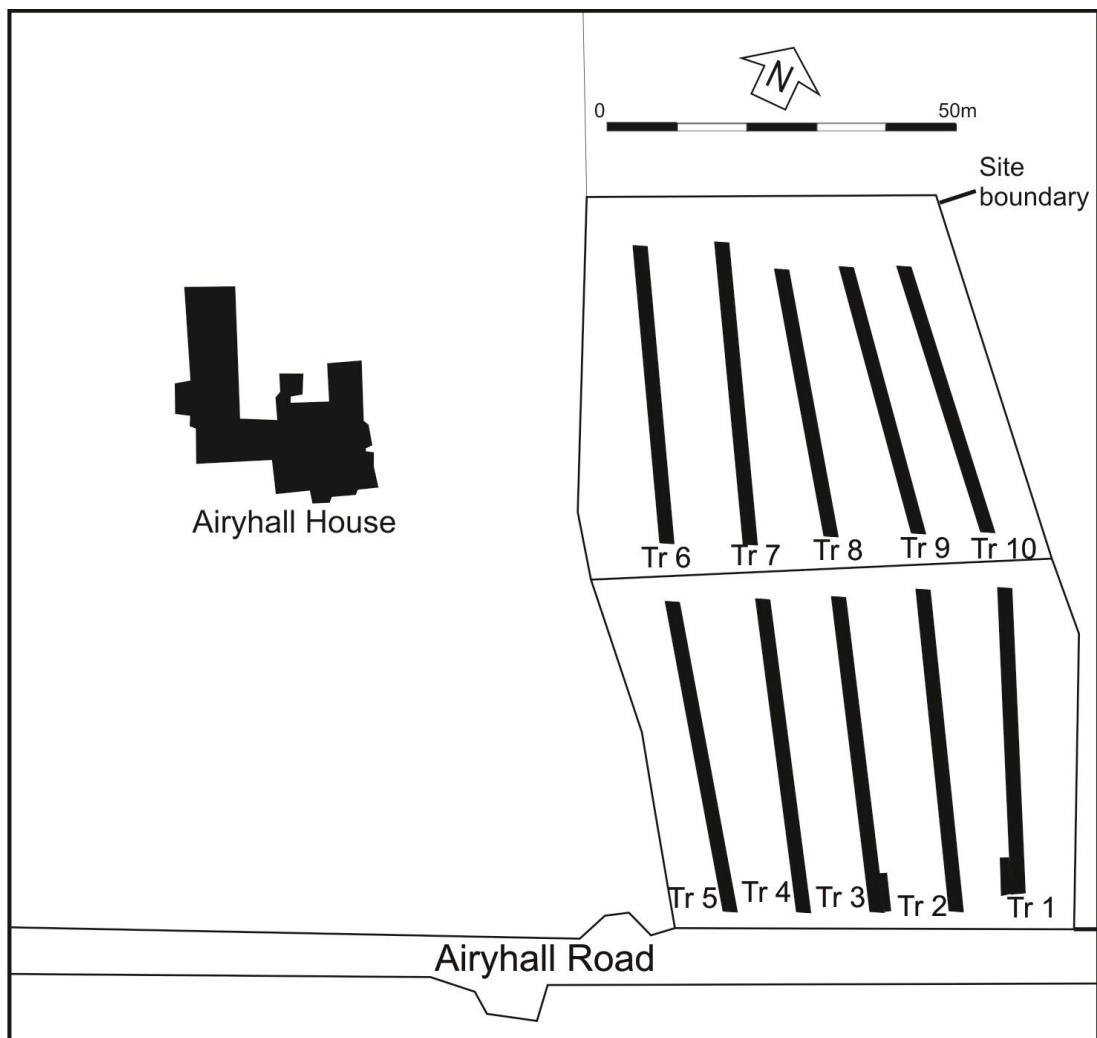
- 2.1 There are no known archaeological sites within the proposed development area. The First (III 3), Second and Third Ordnance Survey maps indicate that the site was fields in the 19th or early 20th century. No buildings or other features are recorded on the site although a track is shown on the First Edition at the north of the area.
- 2.2 A number of finds have been recovered from the surrounding area. A flint blade was found in a garden in Gordon Road, Mannofield (NJ90SW 20), a barbed and tanged arrowhead in Gaitside Terrace (NJ90SW 19) and several flints including a flint scraper, barbed and tanged arrowhead and flint knife at Deeside Gardens (NJ90SW 51).
- 2.3 The site lies just to the south of the Freedom Lands of Aberdeen (Cruickshank and Gunn 1929, 36).



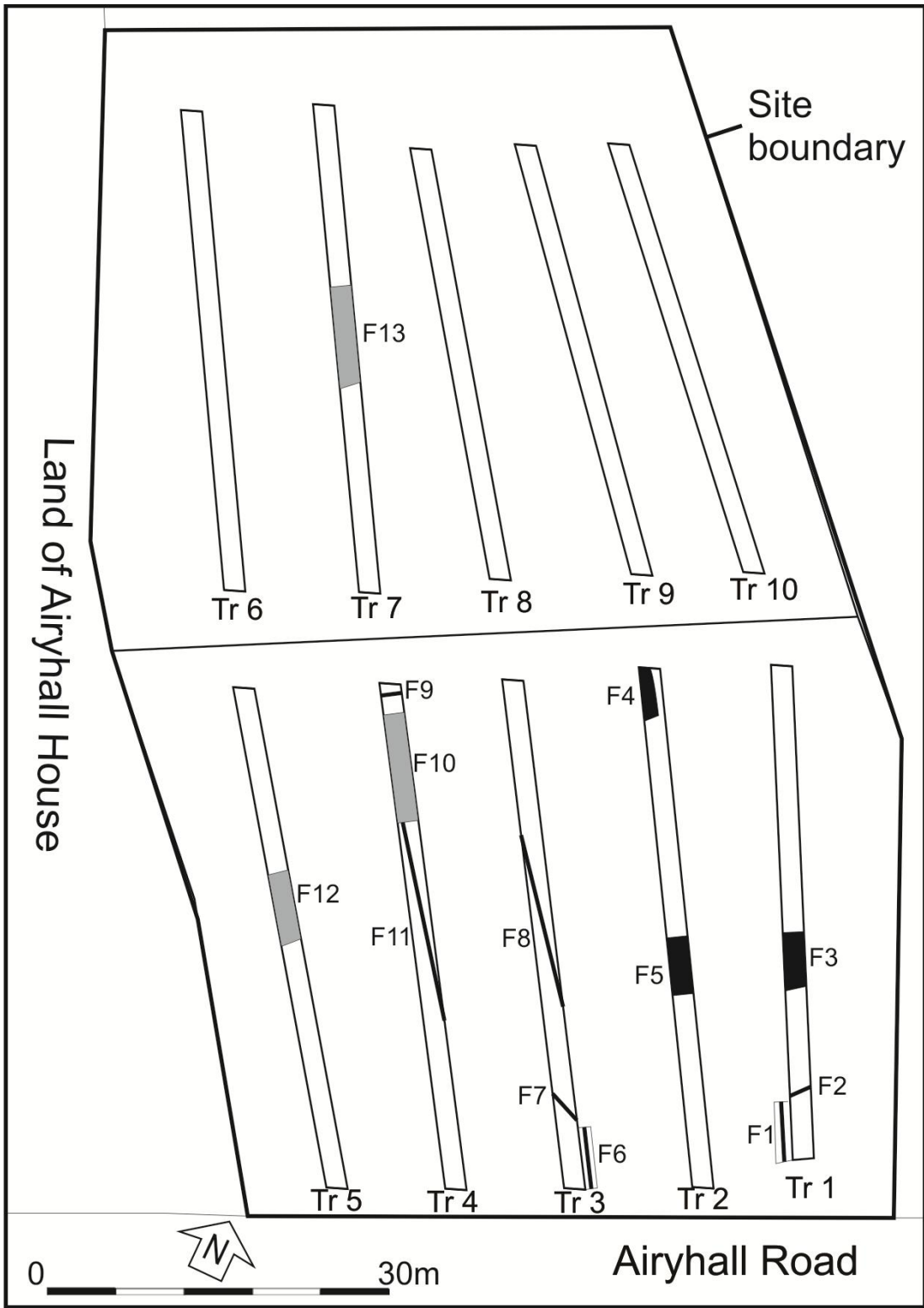
Illus 3 Site outline on First Edition Ordnance Survey (copyright National Libraries of Scotland)

3 THE ARCHAEOLOGICAL EVALUATION

- 3.1 A 7% archaeological evaluation was carried out at the 1 hectare site (Illus 4). 10 trenches were opened over the whole area, five in the southern field and five in the north field. The topsoil was between 0.2 and 0.5m deep and the ground is unimproved in the south field and does not appear to have been ploughed; the natural subsoil contains large boulders which would normally have been removed in land which has been heavily cultivated. Fragments of 19th or 20th-century pottery were found in the ploughsoil in all trenches.
- 3.2 13 features (Illus 5) were recorded including stone and ceramic drains; details of these appear in archive. Three pits (F10, F12, F13) were filled with angular quarry waste; they were 6-10m in diameter. A small number of 19th-century pottery sherds were found in association with these features. These are probably small quarry pits possibly dug to remove building stone for the construction of Airyhall House and then backfilled with stone waste. Several small quarries are recorded on the late 19th-century Ordnance Survey maps but none in the vicinity of Airyhall House.



Illus 4 Plan showing evaluation trenches with Airyhall House



Illus 5 Plan showing features excavated



Illus 6 Quarry pit F12 facing west



Illus 7 Airyhall House facing WNW

4 RECOMMENDATIONS

Ten trenches were excavated during a 7% archaeological evaluation of this 1 hectare plot which has planning permission for residential accommodation (P110020). Three quarry pits were recorded which had probably been dug to extract building materials for the construction of Airyhall House but no other significant archaeological remains were uncovered. It is recommended that no further archaeological work is required prior to this development.

5 REFERENCES

Cruickshank, J and Gunn, DB 1929 The Freedom Lands and Marches of Aberdeen, 1319-1929, Aberdeen, 36.

6 ACKNOWLEDGEMENTS

Thanks to Harry McNab, BANCON; Dougal Morgan and Sandra Greig, The William Cowie Partnership; Judith Stones, Aberdeen City Council.

Cameron Archaeology
45 View Terrace
Aberdeen
AB25 2RS
01224 643020
07581 181057
cameronarch@btinternet.com
www.cameronarchaeology.com
Company registration no 372223 (Scotland)
VAT registration no 990 4373 00

APPENDIX 1 PHOTOGRAPHS



DSC_0141



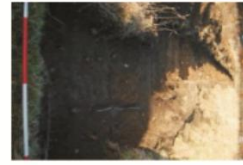
DSC_0143



DSC_0153



DSC_0154



DSC_0162



DSC_0167



DSC_0173



DSC_0178



DSC_0185



DSC_0188



DSC_0193



DSC_0199



DSC_0205



DSC_0210



DSC_0214



DSC_0222



DSC_0223



DSC_0224



DSC_0225



DSC_0226



DSC_0227



DSC_0228



DSC_0229



DSC_0230



DSC_0231



DSC_0232



DSC_0233



DSC_0234



DSC_0235



DSC_0236



DSC_0237



DSC_0238



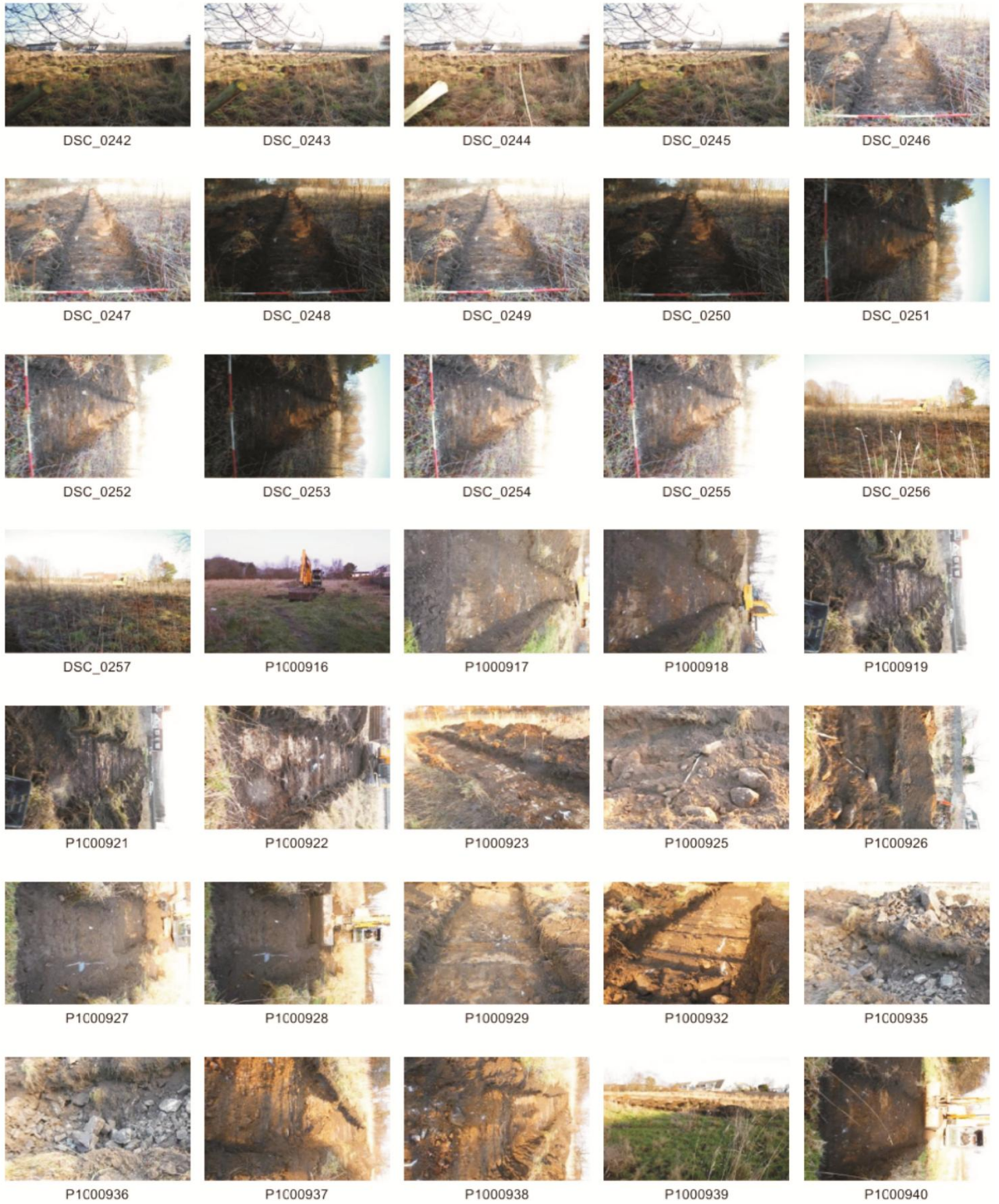
DSC_0239



DSC_0240



DSC_0241





P1C00942



P1C00943



P1000944



P1000945



P1C00946



P1C00952



P1C00953



P1000960



P1000961



P1C00962



P1C00964



P1C00965



P1000966



P1000967



P1C00968



P1C00969



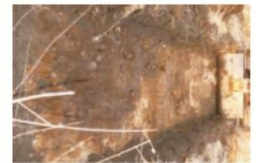
P1C00970



P1000971



P1000972



P1C00973



P1C00974



P1C00979



P1000980



P1000983



P1C00984



P1C00985



P1C00986



P1000987



P1000988



P1C00989



P1C00990

Photo no	Trench	Description	Facing
DSC_0141	1	Whole trench	N
DSC_0143	1	Whole trench	NW
DSC_0153	1	Whole trench	NW
DSC_0154	1	Whole trench	N
DSC_0162	2	Lead pipe F6	N
DSC_0167	2	Lead pipe F6	W
DSC_0173	4	Whole trench	N
DSC_0178	5	Whole trench	N
DSC_0185	5	F12	W
DSC_0188	5	F12	NW
DSC_0193	4	F10	E
DSC_0199	4	F10	E
DSC_0205	4	F10	SSE
DSC_0210	4	F10	W
DSC_0214	4	F10	N
DSC_0222	4	F10	E
DSC_0223		Airyhall House	W
DSC_0233		Airyhall House	W
DSC_0239	6		NE
DSC_0240	5		SE
DSC_0249	6	Whole trench	N
DSC_0255	6	Whole trench	N
P1000972	8	South end	N
P1000973	8	South end	N
P1000974	8	South end	N
P1000979	8	Whole trench	S
P1000980	9	North end	S
P1000983	9	North end	SE
P1000984	9	Whole trench	S
P1000986		North field	S
P1000987		Field clearance SE corner north field	N
P1000988	10	South end	N
P1000989	10	South end	N
P1000990	10	Whole trench	S

APPENDIX 2 FEATURES

Feature no	Trench	Description	Direction
F1	1	Ceramic drain in 0.5m wide trench	N-S
F2	1	Stone drain 1m wide trench	SW-NE
F3	1	Trench filled with pea gravel, stone and redeposited natural subsoil; probably = F5 lead pipe trench	E-W
F4	2	Trench filled with stones 1m wide; stone drain?	N-S
F5	2	Trench filled with stones 2m wide; lead pipe in top of trench	E-W
F6	3	Lead pipe in 0.3m wide trench	N-S
F7	3	1m wide stone drain	SE-NW
F8	3	0.4m wide trench; lead pipe in part of length	SSE-NNW
F9	4	Trench 1m wide filled with loose stones; just north of quarry pit F10	E-W
F10	4	Pit 10m long at least 2m deep filled with small and large angular quarry waste. Quarry pit used for construction of Airyhall House? IUnfilled with waste. Sherds of 19th-century china	
F11	4	0.4m wide trench filled with soil	SSE-NNW
F12	5	Pit 6m long at least 1m deep filled with small and large angular quarry waste. Quarry pit used for construction of Airyhall House? IUnfilled with waste. Sherds of 19th-century china	
F13	7	Pit 8m long filled with small and large angular quarry waste. Quarry pit used for construction of Airyhall House? IUnfilled with waste. Sherds of 19th-century china	