

**LAND AT BROADSHADE, WESTHILL,
ABERDEENSHIRE, AB32 6AW**

Report on the Archaeological Watching Brief



**Cameron Archaeology
31 January 2013**

CONTENTS

SUMMARY	2
1 INTRODUCTION	3
2 ARCHAEOLOGICAL BACKGROUND	3
3 THE WATCHING BRIEF	5
4 REFERENCES	6
5 ACKNOWLEDGEMENTS.....	6
APPENDIX 1 PHOTOGRAPHS	7

ILLUSTRATIONS

Cover The watching brief progressing

Illus 1 Location plan.....	4
Illus 2 Plan showing area of watching brief and areas watched by date	5
Illus 3 Trench F1 for electricity cable (left) and stone drain F4 (centre)	6

SUMMARY

A watching brief was carried out from 16-28th January 2013 and no archaeological remains were uncovered. It is recommended that no further work is required during this development but this is subject to advice from Aberdeenshire Archaeology Service.

1 INTRODUCTION

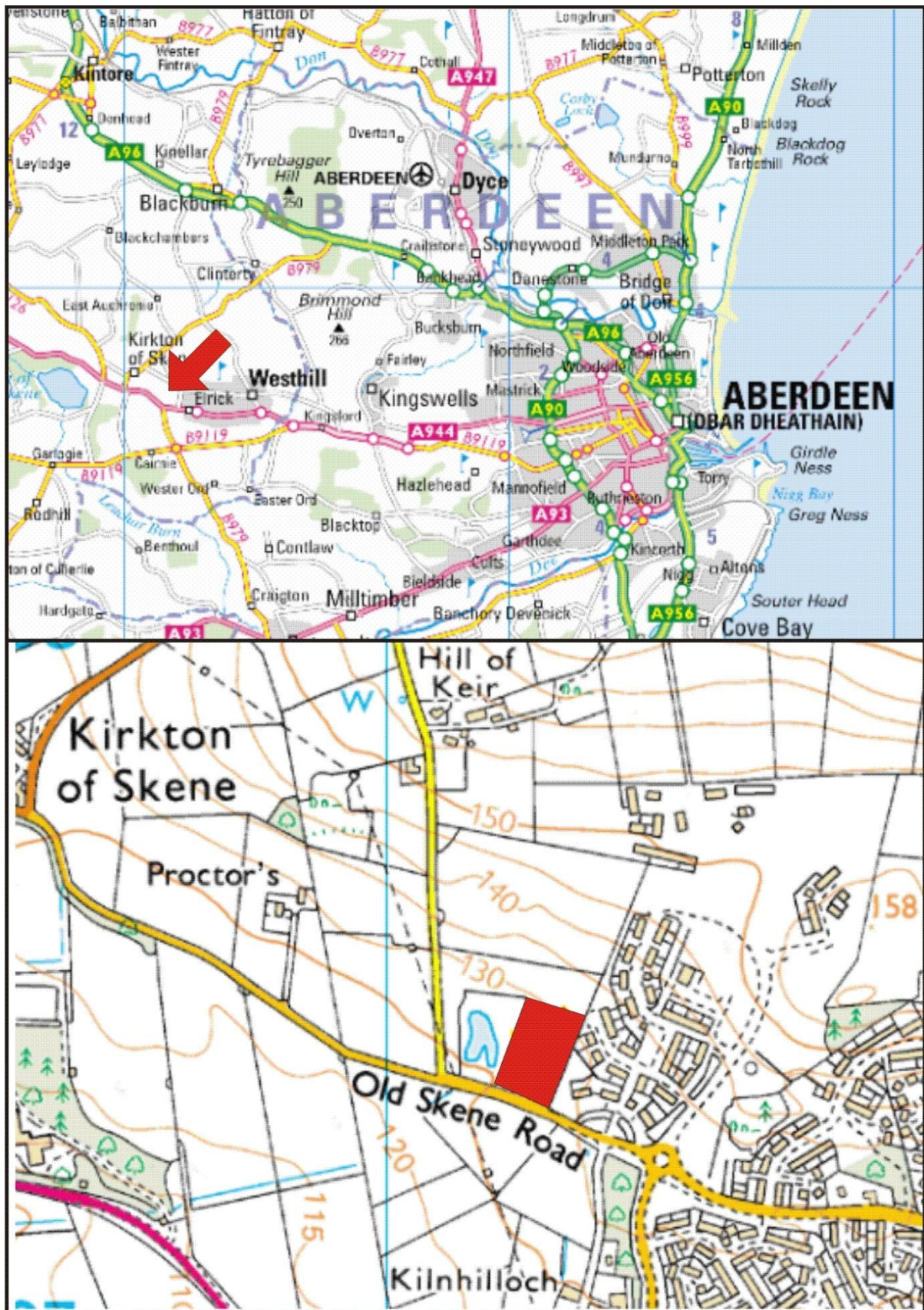
The area of proposed works lies adjacent to west edge of the new settlement at Broadshade, between the settlements of Westhill and Kirkton of Skene, centred on NGR NJ 8121 0738. It is bounded on its south side by Old Skene Road, with open fields to the north, and a large pond to the west, at 125-130m OD on ground sloping gently to the SSW.

A Planning Application (Ref No APP/2012/1627) has been approved to erect a Church, Cafe, Multi Purpose Function Hall with Associated Car Parking and Landscaping. Condition 11 states that the developer must undertake an Archaeological Watching-brief during any ground disturbance.

This watching brief was carried out in the context of Scottish Planning Policy (SPP), Planning Advice Note 2/2011 (PAN 2/2011), and Scottish Historic Environment Policy (SHEP), which states that archaeological remains should be regarded as part of the environment to be protected and managed (C Herbert, Scope and framework of an archaeological watching brief at land at Broadshade, Westhill).

2 ARCHAEOLOGICAL BACKGROUND

The proposed site lies in an area in close proximity to previously recorded archaeology sites, identified through a watching brief undertaken in 2009 over a pipeline diversion to the West and North of the proposed development site, which indicated Neolithic and Bronze Age human activity in this area. In the wider landscape, there is evidence of prehistoric activity in the form of finds of stone axes and flint arrowheads, the cropmark of a ring-ditch, and a cist burial. The existence of these archaeological sites indicates that there is potential for previously unrecorded archaeological remains to survive in this area. (C Herbert, Scope and framework of an archaeological watching brief at land at Broadshade, Westhill).

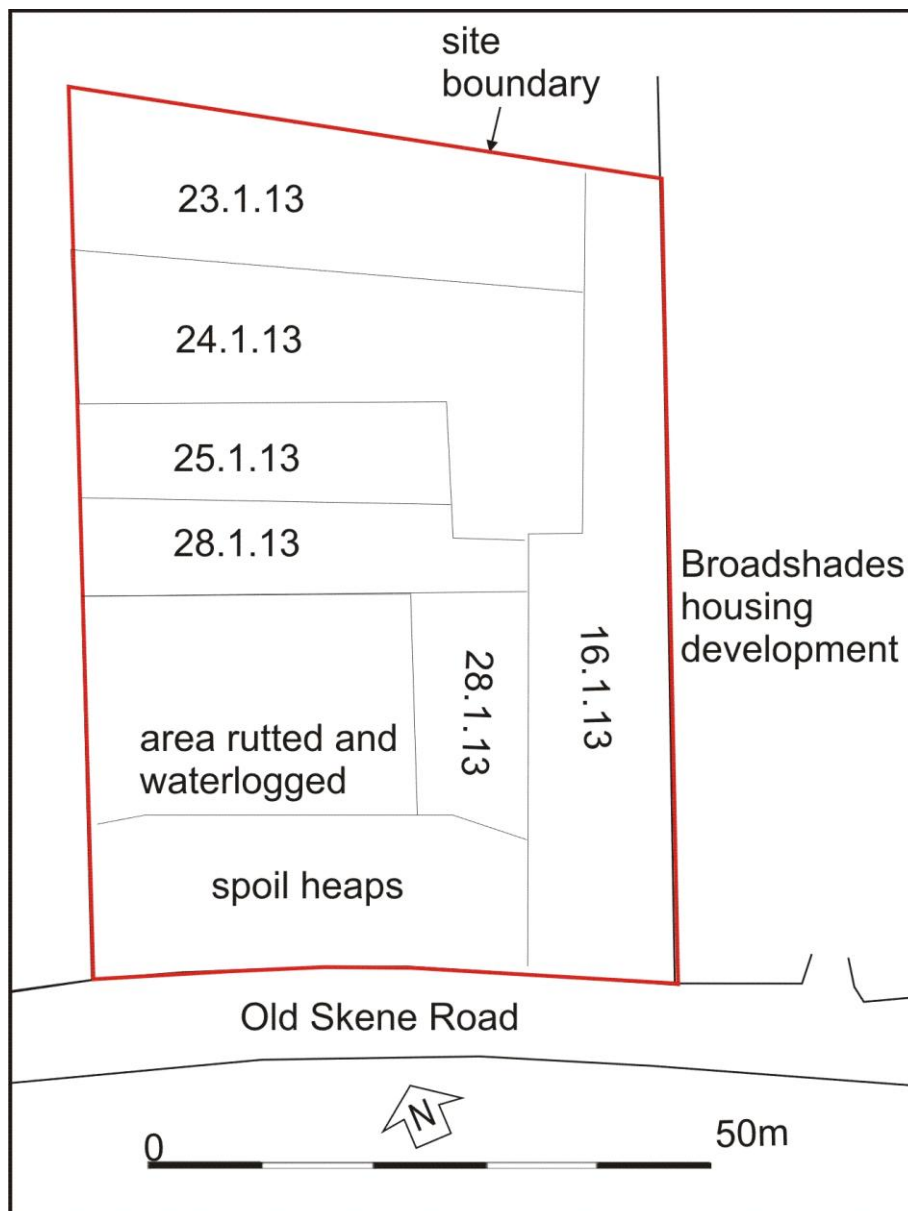


Illus 1 Location plan (Contains Ordnance Survey data © Crown copyright and database right 2013).

3 THE WATCHING BRIEF

A watching brief was carried out from 16-28 January 2013. The weather was mainly snow and ice with thawing towards the end of the watching brief. The topsoil is 20-25cm deep medium brown clay; the natural subsoil is clayey sand with clay and sand lenses and large and medium sized boulders many of which had been removed leaving topsoil-filled stone holes.

A trench containing an electric cable was located running NNE-SSW parallel to the west edge of the site and three stone drains also running in the same orientation down the field were identified. Details appear in archive.



Illus 2 Plan showing area of watching brief and areas watched by date (from copyright McLean Architects)



Illus 3 Trench F1 for electricity cable (left) and stone drain F4 (centre); facing north

4 REFERENCES

Herbert, C Scope and framework of an archaeological watching brief at land at Broadshade, Westhill

5 ACKNOWLEDGEMENTS

Thanks to Claire Herbert at Aberdeenshire Archaeology Service; Mark Dysart, McLean Architects and staff of Keir Milne and RJ Plant.

Cameron Archaeology
45 View Terrace
Aberdeen
AB25 2RS
01224 643020
07581 181057
cameronarch@btinternet.com
www.cameronarchaeology.com
Company registration no 372223 (Scotland)
VAT registration no 990 4373 00

APPENDIX 1 PHOTOGRAPHS

Photo no	Description	Facing
16.1.13		
DSC_1612-1617	Area at east cleared prior to CA arrival and then ground frozen. The area included stone and concrete water tank, actually outwith the development area	N
23.1.13		
DSCF1140-1144	Preparation for soil strip	
DSCF1145-1170	Soil strip at extreme north of site	W
DSCF1171-1185	Soil strip at extreme north of site	
DSCF1186-1189	Trench for electricity main running parallel to west edge of site F1 (left) and stone drain F4 (centre)	N
24.1.13		
DSCF1190-1229	soil strip	
25.1.13		
DSCF1232-1235	Soil strip	
DSCF1236-1238	stone drain under dusting of snow F2	S
DSCF1239-1250	Soil strip	
DSCF1251-1253	stone drain F3	S
DSCF1254-1253	Soil strip showing deep rutting caused by dumper truck, severe weather conditions and clay subsoil.	S
28.1.13		
DSCF1283-1299	Soil strip showing waterlogging and flooding	

16.1.13



DSC_1612



DSC_1613



DSC_1614



DSC_1615



DSC_1616



DSC_1617

23.1.13



DSCF1140



DSCF1141



DSCF1142



DSCF1143



DSCF1144



DSCF1145



DSCF1146



DSCF1147



DSCF1148



DSCF1149



DSCF1150



DSCF1151



DSCF1152



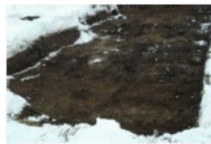
DSCF1153



DSCF1154



DSCF1155



DSCF1156



DSCF1157



DSCF1158



DSCF1159



DSCF1160



DSCF1161



DSCF1162



DSCF1163



DSCF1164



DSCF1165



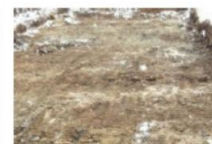
DSCF1166



DSCF1167



DSCF1168



DSCF1169



DSCF1170



DSCF1171



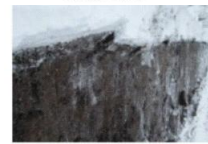
DSCF1172



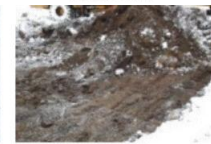
DSCF1173



DSCF1174



DSCF1175



DSCF1176



DSCF1177



DSCF1178



DSCF1179



DSCF1180



DSCF1181



DSCF1182



DSCF1183



DSCF1184



DSCF1185



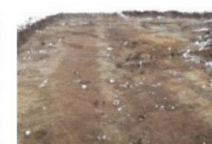
DSCF1186



DSCF1187



DSCF1188



DSCF1189



DSCF1190



DSCF1191



DSCF1192



DSCF1193



DSCF1194



DSCF1195



DSCF1196



DSCF1197



DSCF1198



DSCF1199



DSCF1200



DSCF1201



DSCF1202



DSCF1203



DSCF1204



DSCF1205



DSCF1206



DSCF1207



DSCF1208



DSCF1209



DSCF1210



DSCF1211



DSCF1212



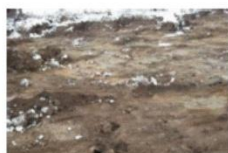
DSCF1213



DSCF1214



DSCF1215



DSCF1216



DSCF1217



DSCF1218



DSCF1219



DSCF1220



DSCF1221



DSCF1222



DSCF1223



DSCF1224



DSCF1225



DSCF1226



DSCF1227



DSCF1228



DSCF1229

25.1.13



DSCF1232



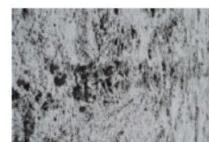
DSCF1233



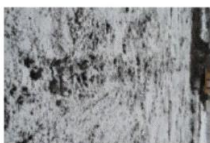
DSCF1234



DSCF1235



DSCF1236



DSCF1237



DSCF1238



DSCF1239



DSCF1240



DSCF1241



DSCF1242



DSCF1243



DSCF1244



DSCF1245



DSCF1246



DSCF1247



DSCF1248



DSCF1249



DSCF1250



DSCF1251



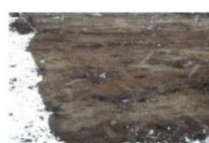
DSCF1252



DSCF1253



DSCF1254



DSCF1255



DSCF1256



DSCF1257



DSCF1258



DSCF1259

28.1.13



DSCF1283



DSCF1284



DSCF1285



DSCF1286



DSCF1287



DSCF1288



DSCF1289



DSCF1290



DSCF1291



DSCF1292



DSCF1293



DSCF1294



DSCF1295



DSCF1296



DSCF1297



DSCF1298



DSCF1299