

**Report on an Archaeological Investigation
at Berryhill Farm/Findlay Farm,
Bridge of Don, Aberdeen, AB23 8AZ**

NGR NJ 9529 1198



Cat Peters
Cameron Archaeology Ltd
December 2012

Report on an Archaeological Investigation at Berryhill Farm, Bridge of Don

Contents

Text

1.	Introduction	3
2.	Archaeological Background	4
3.	Methodology	4
4.	The Controlled Watching Brief	4
5.	Recommendations	6
6.	Acknowledgements	6
7.	References	6
	Appendix 1: Feature List	8
	Appendix 2: Finds List	8
	Appendix 3: Photographs	9

Illustrations

Cover: General Shot of Soil Strip; Find 3

Illus 1: Area Monitored During Archaeological Investigation	3
Illus 2: Location of Features Encountered during Soil strip	5
Illus 3: Location of Finds Encountered during Soil Strip	6

Summary

A controlled watching brief was undertaken on a soil strip across the route of a new access route of on an area proposed for a Business and Industrial Park. The area monitored was a maximum of 18m wide and extended across a total of eight fields. Stone drains and other features of probable 19th or 20th century agricultural origin were encountered. In addition, ten lithics were recovered during the monitoring, one of which was a small red arrowhead of early Bronze Age date (Ballin Pers comm). These finds, found in the southernmost part of the site, further corroborate the findings of earlier archaeological work in the vicinity that there is very high potential for prehistoric archaeology to be encountered within the development area. The written scheme of investigation for this phase, also requires archaeological monitoring of soil stripping relating to the next phases of the development, and it is important that this occurs. Further archaeological advice can be obtained from the Lead Curator of Local History and Archaeology at Aberdeen City Council.

Report on an Archaeological Investigation at Berryhill Farm, Bridge of Don

1. Introduction

- 1.1 The site consisted of eight fields within a larger parcel of land 37 hectares in total, due to be developed for a Business and Industrial Park. It lies within the parish of Old Machar, to the north of the Bridge of Don, within the city of Aberdeen at NGR NJ 9529 1198 (Illus 1), lying between 10-35m AOD. It is approached from the Cloverhill Farm access from the A90 Murcar Roundabout at the junction with the B999 Mundurno Road. An outline planning application to Aberdeen City Council (071431/ A7/1464) for the development of a Business and Industrial Park (Use Classes 4, 5 and 6) and associated access road from the A90 at the Murcar Roundabout was approved conditionally on 22/07/2009. An application (121031) for approval of matters specified in Conditions 1 (means of access and landscaping), 5 (phasing), 17 (drainage), 24 (masterplan/landscape framework), & 27 (strategic landscape belt & screening) is pending. This archaeological work formed part of Phase I of the scheme; to provide a new access route for the Business and Industrial Park.



*Illus 1: Area Monitored During Archaeological Investigation (outlined in blue)
(Contains Ordnance Survey data © Crown copyright and database right 2012)*

- 1.2 The archaeological investigation was commissioned by Daniel Brooks of Generate Land, on behalf of the client, MoREOF Berryhill Limited, and was undertaken between Monday 3rd December 2012 and Wednesday 19th December 2012. It was carried out in the context of Scottish Planning Policy (SPP) Planning Advice Note 42 (PAN 42) and Scottish Historic Environment Policy (SHEP). The archaeological written scheme of investigation (Cameron 2012), approved by the Aberdeen City Council Lead Curator of Local History and Archaeology, was adhered to in full.

2. Archaeological Background

- 2.1 Several previous archaeological investigations have taken place in the vicinity of the site in recent years (Cameron 2012, 2), most notably an evaluation by Aberdeen City Council Archaeology Unit in 2008, covering the same proposed development area as the current investigation. This recovered 710 flints of possible Bronze Age date (Ballin 2008), post-holes and a possible industrial area, indicating later prehistoric use of the area (Cameron *et al* 2008). It is this high level of archaeological potential that has led to archaeological conditions being placed on the planning permission for the development.

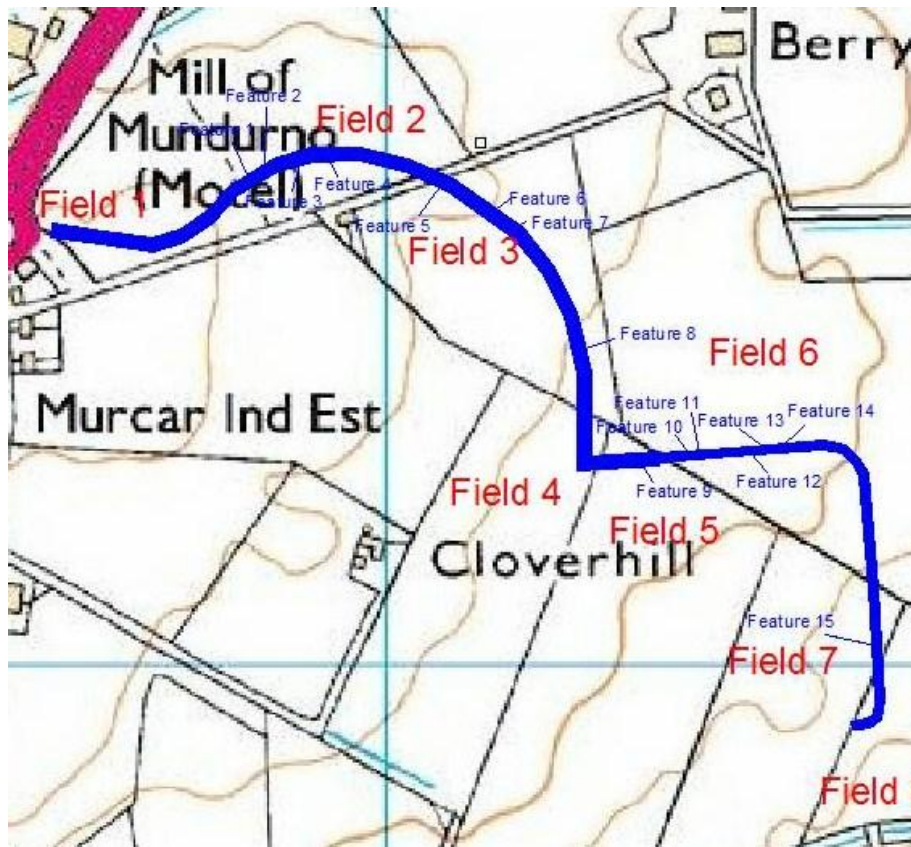
3. Methodology

- 3.1 The 37 hectare area will be developed in phases. This archaeological work was undertaken during Phase I of the works, immediately prior to the construction of the new access route. The investigation comprised a controlled watching brief of the soil strip of the areas directly impacted by the new access route. The archaeological work was undertaken by Alison Cameron and Cat Peters of Cameron Archaeology, and the project was managed by Alison Cameron.

4. The Controlled Watching Brief

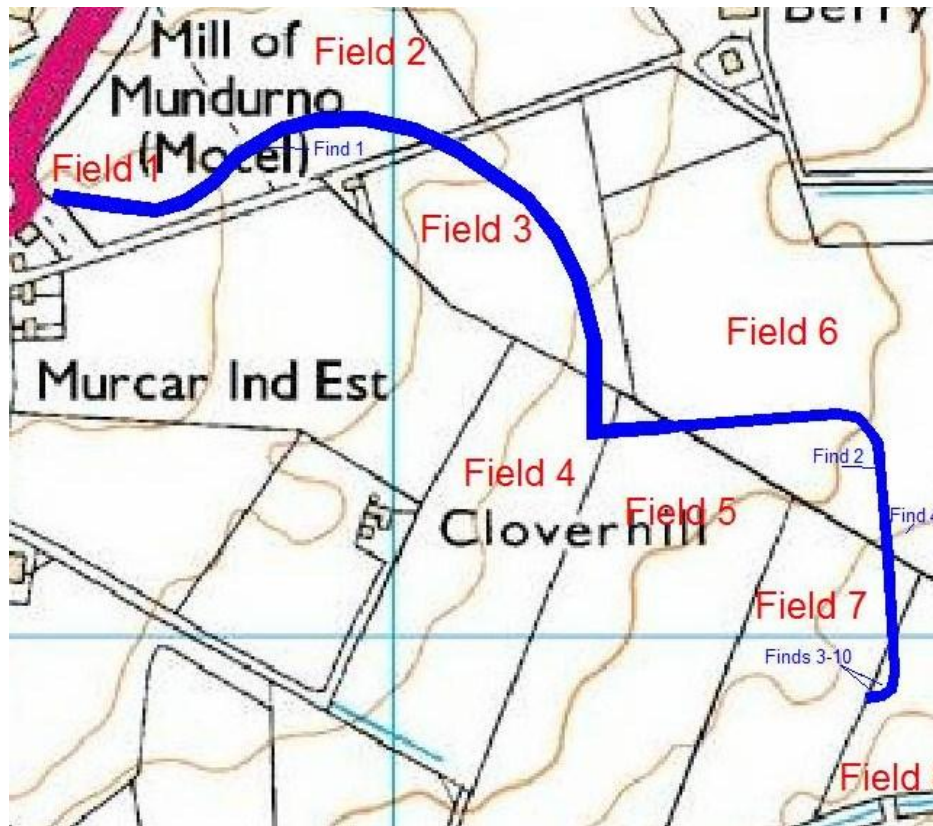
- 4.1 The controlled watching brief area comprised a linear route traversing a total of 8 fields (Illus 1, page 3). The soil strip began in Field 1, to the east and continued across the length of the new access route through fields 2 to 8 consecutively.
- 4.2 Across Fields 1, 2, 3 and 4, the width of the soil strip was 18 metres, and in Fields 5, 6, 7 and 8, the width was 12m. Fields, 2, 4 and 8 were grass fields, and Fields 1, 3, 5, 6 and 7 were stubble crop fields. The topsoil consisted generally of a mid to dark brown loose soil of between 0.25m and 0.6m depth; and the natural was a soft loose orange sand with some gravel inclusions and areas of clay.

- 4.3 A total of 15 features were encountered during Phase I of the soil strip for the new access route (Illus 2; Appendix 1). One of these features was a modern metal cable (Feature 7), one was a 19th century ditch (Feature 5), four were areas of ploughmarks (Features 1, 3, 6 and 9), and nine were stone drains (Features 2, 4, 8, 10, 11, 12, 13, 14 and 15). This ties in with known use of the area for the last two centuries at least, for agricultural purposes.



Illus 2: Location of Features Encountered during Soil Strip (Contains Ordnance Survey data © Crown copyright and database right 2012)

- 4.4 In addition to these features, a total of ten finds were encountered (Illus 3; Appendix 2). These were all lithics, the most interesting of which must be a small red arrowhead (cover). Early indications suggest that “the arrowhead is clearly EBA, and the dominant technological approach was bipolar technique, which corresponds to... [the]... non-arrowhead pieces” (Ballin pers comm).



Illus 3: Location of Finds Encountered during Soil Strip (Contains Ordnance Survey data © Crown copyright and database right 2012)

5. Recommendations

- 5.1 A Post-Excavation Research Design (PERD) will be compiled and further work will be required to study and report on the finds recovered during this work.
- 5.2 As the Written Scheme of Investigation (Cameron 2012) outlines an initial controlled watching brief during the soil strips for all of the groundworks undertaken as part of the development, across all phases of development, no further recommendations are required. The features and, particularly the finds, encountered during this phase further highlight the potential for archaeology, particularly in the more southerly parts of the site.

6. Acknowledgements

Thanks to Daniel Brooks for commissioning the project, also to Judith Stones for all advice, and to on-site staff for all their assistance with the project.

7. References

Ballin, T. B. (2008) 'Kingfisher Industrial Estate (E95), Aberdeen: The lithic assemblage'. Unpublished report for Aberdeen City Council Archaeological Unit

Cameron, A., Peters, C and Buchanan, S. (2008) 'Findlay Farm (Kingfisher Industrial Estate), Aberdeen City (Old Machar parish), building recording, field evaluation and walkover survey', *Discovery Excav Scot, New, vol.10*, 13

Cameron, A. (2012) 'Berryhill Farm/ Findlay Farm, Bridge of Don, Aberdeen: Written Scheme of Investigation. Unpublished report by Cameron Archaeology

Appendix 1

Feature List

Feature Number	Field Number	Feature Type
1	2	Plough Marks
2	2	Stone Drain
3	2	Plough Marks
4	2	Stone Drain
5	3	19 th agricultural feature
6	3	Plough mark
7	3	Metal Cable
8	3	Stone Drain
9	5	Plough marks
10	6	Stone Drain
11	6	Stone Drain
12	6	Stone Drain
13	6	Stone Drain
14	6	Stone Drain
15	7	Stone Drain

Appendix 2

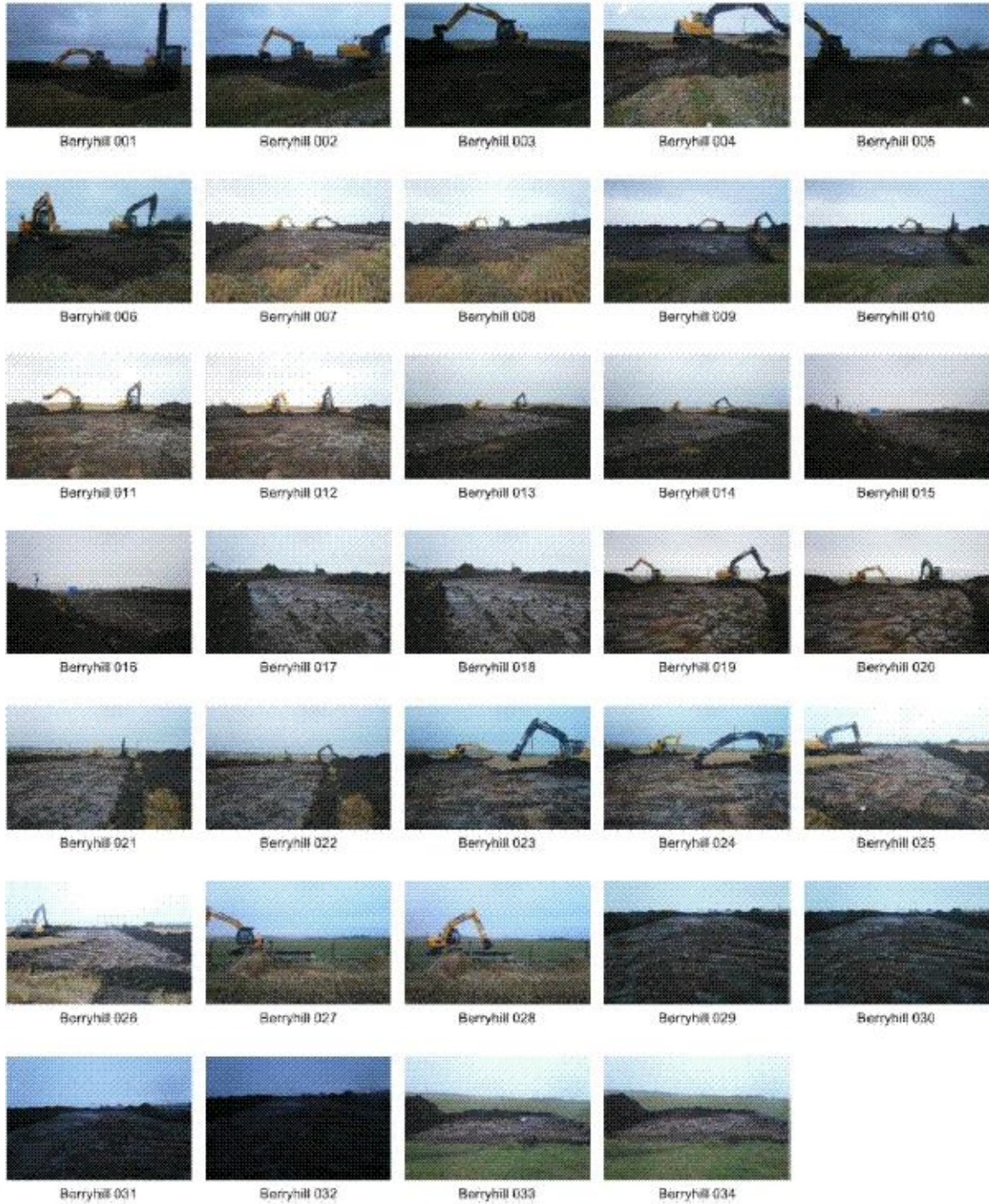
Finds List

Feature Number	Field Number	Feature Type
1	2	Lithic
2	6	Lithic
3	8	Lithic- arrowhead
4	6	Lithic
5	8	Lithic
6	8	Lithic
7	8	Lithic
8	8	Lithic
9	8	Lithic
10	8	Lithic

Appendix 3 Photographs

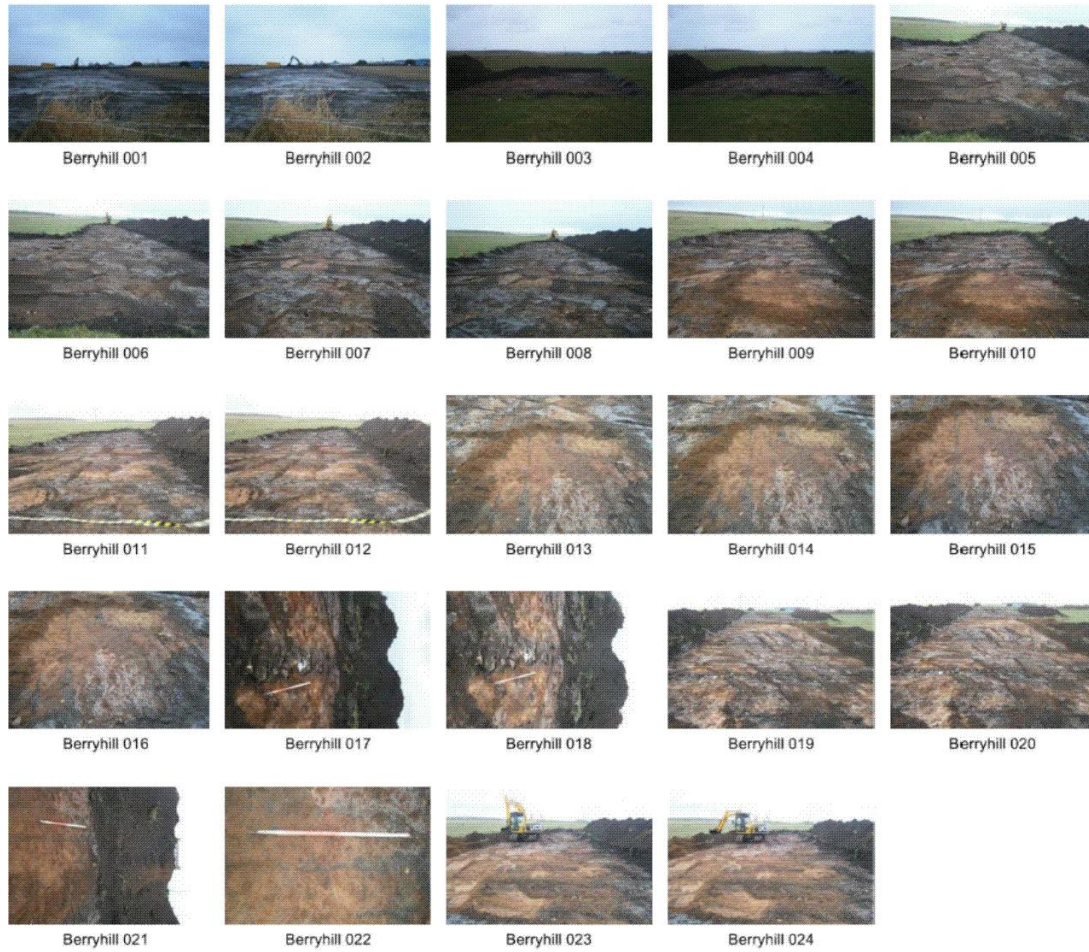
Day 1: 03/12/2012

Photograph Number	Field Number	Direction Facing	Description
1	1	E	Beginning Soil Strip
2	1	E	Beginning Soil Strip
3	1	E	Beginning Soil Strip
4	1	E	Beginning Soil Strip
5	1	E	Beginning Soil Strip
6	1	E	Beginning Soil Strip
7	1	E	Soil Strip in Field 1
8	1	E	Soil Strip in Field 1
9	1	E	Soil Strip in Field 1
10	1	E	Soil Strip in Field 1
11	1	E	Soil Strip in Field 1
12	1	E	Soil Strip in Field 1
13	1	NE	Soil Strip in Field 1
14	1	NE	Soil Strip in Field 1
15	1	W	Soil Strip in Field 1
16	1	W	Soil Strip in Field 1
17	1	SW	Soil Strip in Field 1
18	1	SW	Soil Strip in Field 1
19	1	NE	Soil Strip in Field 1
20	1	NE	Soil Strip in Field 1
21	1	NE	Soil Strip in Field 1
22	1	NE	Soil Strip in Field 1
23	1	NE	Soil Strip in Field 1
24	1	NE	Soil Strip in Field 1
25	1	SW	Soil Strip in Field 1
26	1	SW	Soil Strip in Field 1
27	2	NE	Beginning Field 2
28	2	NE	Beginning Field 2
29	1	SW	Soil Strip in Field 1 completed
30	1	NE	Soil Strip in Field 1 completed
31	1	NE	Soil Strip in Field 1 completed
32	1	NE	Soil Strip in Field 1 completed
33	2	NE	Soil Strip in Field 2
34	2	NE	Soil Strip in Field 2



Day 2: 04/12/2012

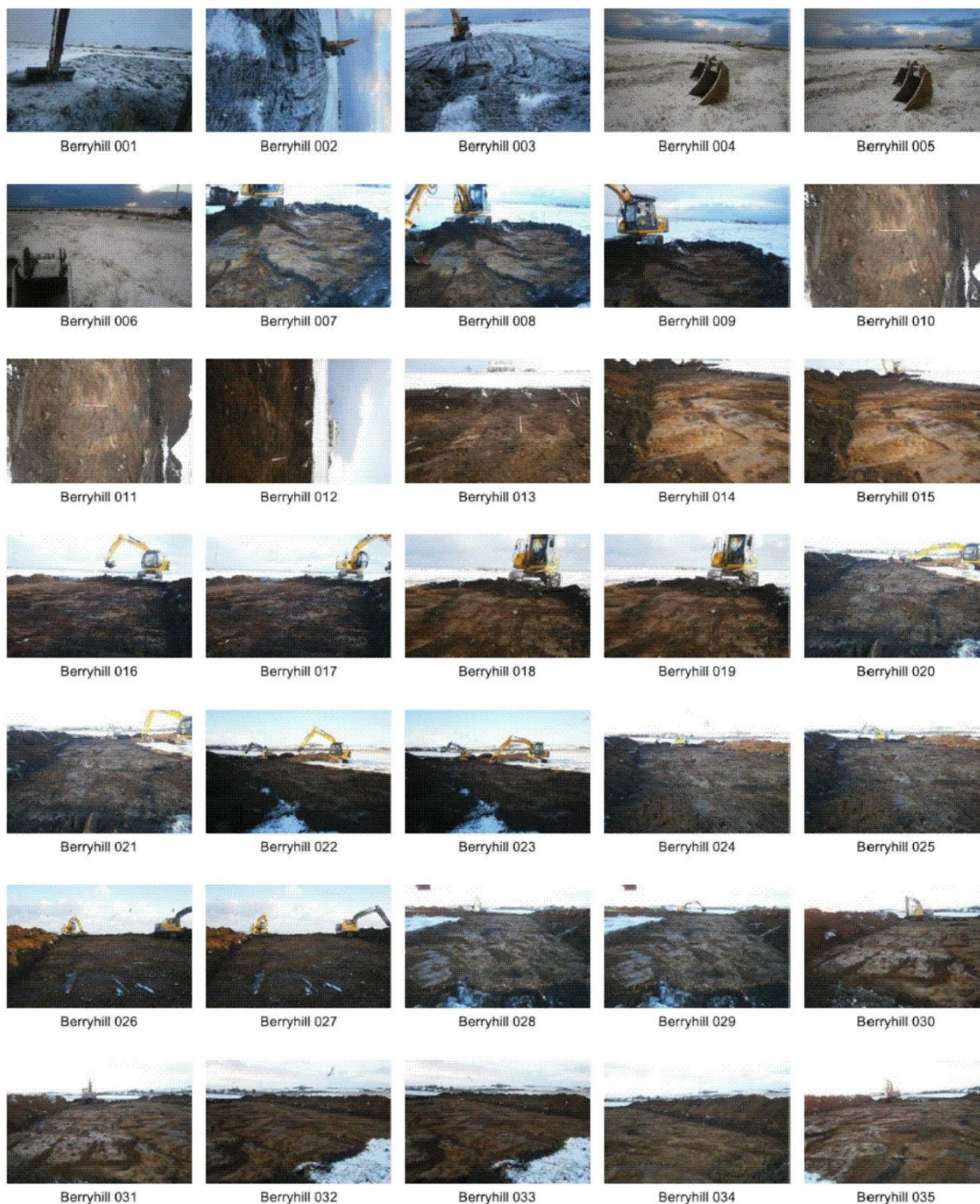
Photograph Number	Field Number	Direction Facing	Description
1	1	SW	Backfilling Field 1
2	1	SW	Backfilling Field 1
3	2	NE	Soil Strip in Field 2
4	2	NE	Soil Strip in Field 2
5	2	NE	Soil Strip in Field 2
6	2	NE	Soil Strip in Field 2
7	2	NE	Soil Strip in Field 2
8	2	NE	Soil Strip in Field 2
9	2	NE	Soil Strip in Field 2
10	2	NE	Soil Strip in Field 2
11	2	NE	Soil Strip in Field 2
12	2	NE	Soil Strip in Field 2
13	2	NE	Feature 1: plough marks
14	2	NE	Feature 1: plough marks
15	2	NE	Feature 1: plough marks
16	2	NE	Feature 1: plough marks
17	2	N	Feature 2: stone drain
18	2	N	Feature 2: stone drain
19	2	NE	Feature 2: stone drain
20	2	NE	Feature 2: stone drain
21	2	S	Feature 3: plough marks
22	2	S	Feature 3: plough marks
23	2	NE	Soil Strip in Field 2
24	2	NE	Soil Strip in Field 2



Day 3: 05/12/2012

Photograph Number	Field Number	Direction Facing	Description
1	2	E	Snow
2	2	E	Soil Strip in Field 2
3	2	E	Soil Strip in Field 2
4	1	E	General shot of Field 1
5	1	E	General shot of Field 1
6	1	E	General shot of Field 1
7	2	E	Soil Strip in Field 2
8	2	E	Soil Strip in Field 2
9	2	E	Soil Strip in Field 2
10	2	N	Feature 4: drain
11	2	N	Feature 4: drain
12	2	S	Feature 4: drain
13	2	S	Feature 4: drain
14	2	E	Soil Strip in Field 2
15	2	E	Soil Strip in Field 2
16	2	SE	Soil Strip in Field 2
17	2	SE	Soil Strip in Field 2
18	2	SE	Soil Strip in Field 2

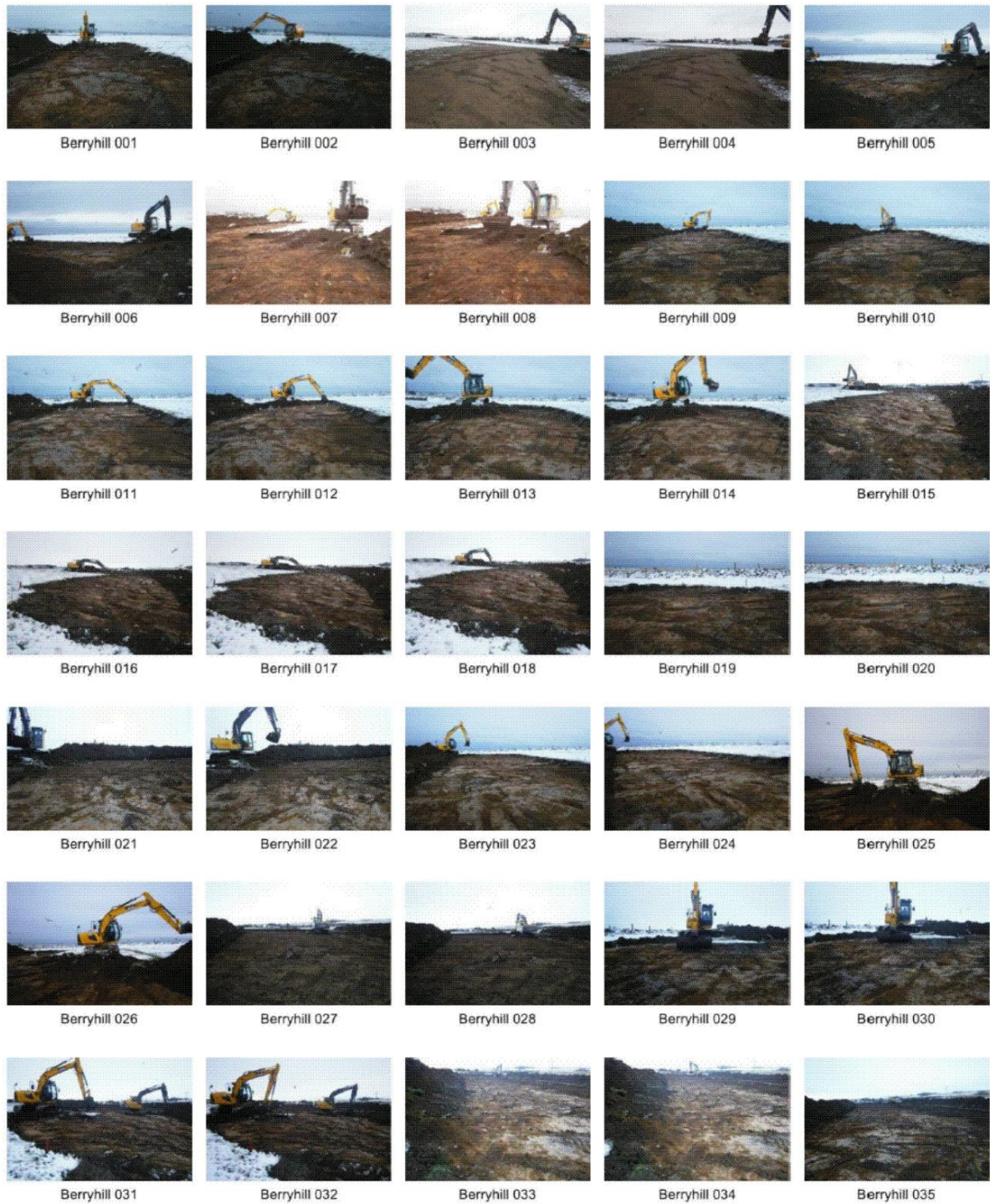
19	2	SE	Soil Strip in Field 2
20	2	NW	Soil Strip in Field 2
21	2	NW	Soil Strip in Field 2
22	2	NW	Soil Strip in Field 2
23	2	NW	Soil Strip in Field 2
24	2	NW	Backfilling in Field 2
25	2	NW	Backfilling in Field 2
26	2	SE	Soil Strip in Field 2
27	2	SE	Soil Strip in Field 2
28	2	NW	Soil Strip in Field 2
29	2	NW	Soil Strip in Field 2
30	2	NW	Soil Strip in Field 2
31	2	NW	Soil Strip in Field 2
32	2	N	Soil Strip in Field 2
33	2	N	Soil Strip in Field 2
34	2	N	Soil Strip in Field 2
35	2	NW	Soil Strip in Field 2
36	2	W	Soil Strip in Field 2



Day 4: 06/12/2012

Photograph Number	Field Number	Direction Facing	Description
1	2	SE	Soil Strip in Field 2
2	2	SE	Soil Strip in Field 2
3	2	NW	Soil Strip in Field 2
4	2	NW	Soil Strip in Field 2
5	2	N	Soil Strip in Field 2
6	2	N	Soil Strip in Field 2
7	2	SE	Soil Strip in Field 2

8	2	SE	Soil Strip in Field 2
9	2	SE	Soil Strip in Field 2
10	2	SE	Soil Strip in Field 2
11	2	SE	Soil Strip in Field 2
12	2	SE	Soil Strip in Field 2
13	2	SE	Soil Strip in Field 2
14	2	SE	Soil Strip in Field 2
15	2	NW	Soil Strip in Field 2
16	2	NW	Soil Strip in Field 2
17	2	NW	Soil Strip in Field 2
18	2	NW	Soil Strip in Field 2
19	2	SE	Soil Strip in Field 2
20	2	SE	Soil Strip in Field 2
21	2	SW	Soil Strip in Field 2
22	2	SW	Soil Strip in Field 2
23	2	SE	Soil Strip in Field 2
24	2	SE	Soil Strip in Field 2
25	2	SE	Soil Strip in Field 2
26	2	SE	Soil Strip in Field 2
27	2	NW	Soil Strip in Field 2
28	2	NW	Soil Strip in Field 2
29	2	SW	Soil Strip in Field 2
30	2	SW	Soil Strip in Field 2
31	2	NW	Soil Strip in Field 2
32	2	NW	Soil Strip in Field 2
33	2	NW	Soil Strip in Field 2 completed
34	2	NW	Soil Strip in Field 2 completed
35	2	NW	Soil Strip in Field 2 completed
36	2	NW	Soil Strip in Field 2 completed
37	2	NW	Soil Strip in Field 2 completed
38	2	NW	Soil Strip in Field 2 completed



Day 5: 07/12/2012

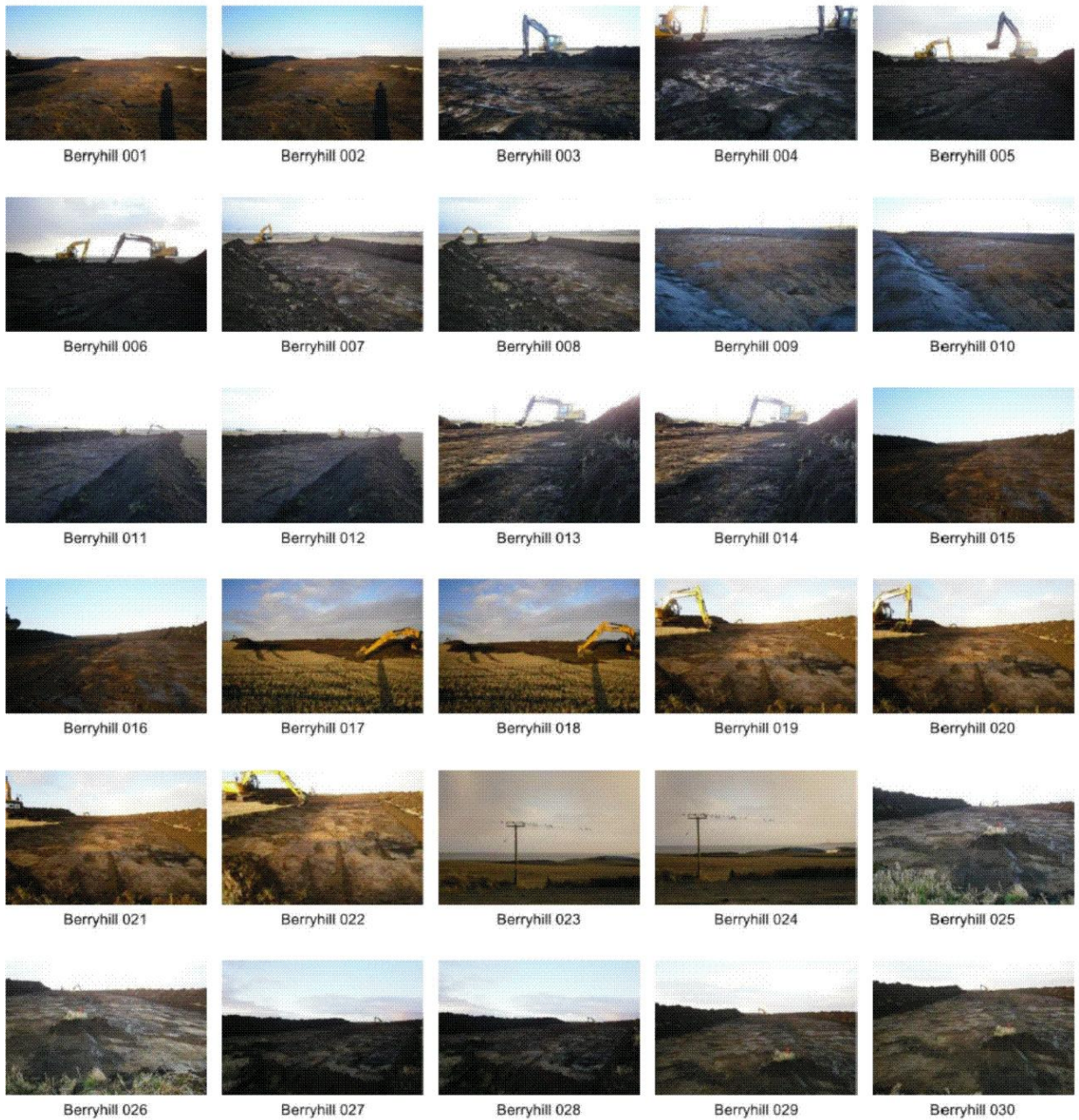
Photograph Number	Field Number	Direction Facing	Description
1	3	SE	Beginning of soil strip in Field 3
2	3	SE	Beginning of soil strip in Field 3
3	3	WSW	Beginning of soil strip in Field 3
4	3	WSW	Beginning of soil strip in Field 3
5	2	NW	Backfilling in Field 2

6	2	NW	Backfilling in Field 2
7	3	S	Feature 5: agricultural feature
8	3	S	Feature 5: agricultural feature
9	3	S	Feature 5: agricultural feature
10	3	S	Feature 5: agricultural feature
11	3	S	Feature 5: agricultural feature
12	3	SE	Soil Strip in Field 3
13	3	SE	Soil Strip in Field 3
14	3	ESE	Feature 5
15	3	ESE	Feature 5
16	3	E	Feature 6- shallow plough mark
17	3	E	Feature 6- shallow plough mark
18	3	W	Feature 7- metal cable
19	3	W	Feature 7- metal cable
20	2	WSW	Field 2
21	3	ESE	Feature 5
22	2	WSW	Field 2
23	2	W	Backfilled in Field 2
24	3	W	Backfilled in Field 2
25	3	NW	Soil Strip in Field 3
26	3	NW	Soil Strip in Field 3
27	3	NW	Soil Strip in Field 3
28	3	NW	Soil Strip in Field 3
29	3	NW	Soil Strip in Field 3
30	3	NW	Soil Strip in Field 3

Day 6: 10/12/2012

Photograph Number	Field Number	Direction Facing	Description
1	3	NW	Soil strip in Field 3
2	3	NW	Soil strip in Field 3
3	3	S	Soil strip in Field 3
4	3	S	Soil strip in Field 3
5	3	SE	Soil strip in Field 3
6	3	SE	Soil strip in Field 3
7	3	S	Soil strip in Field 3
8	3	S	Soil strip in Field 3
9	3	NW	Soil strip in Field 3
10	3	NW	Soil strip in Field 3
11	3	SE	Soil strip in Field 3
12	3	SE	Soil strip in Field 3
13	3	SE	Soil strip in Field 3
14	3	SE	Soil strip in Field 3
15	3	SE	Soil strip in Field 3
16	3	SE	Soil strip in Field 3
17	3	NW	Soil strip in Field 3

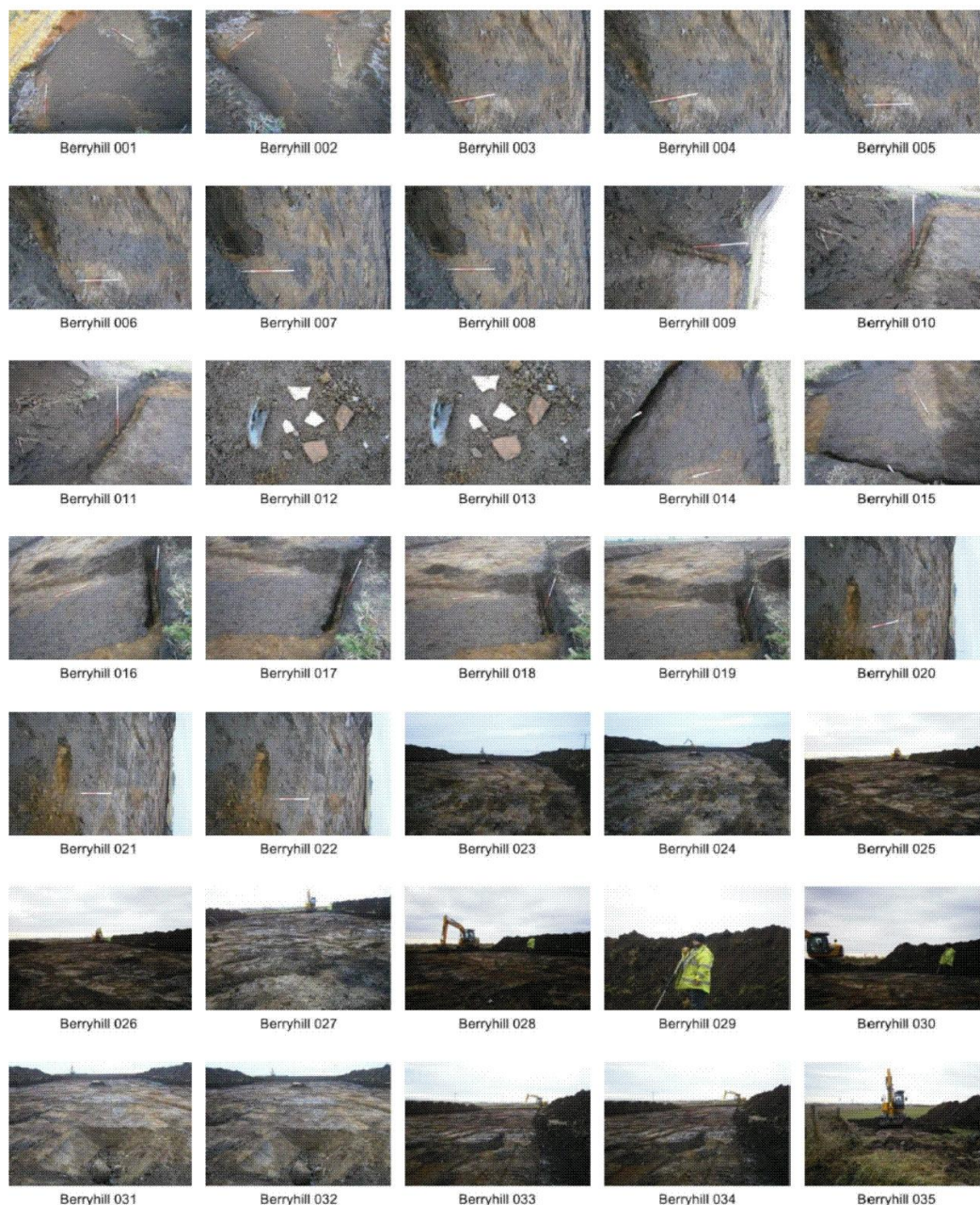
18	3	NW	Soil strip in Field 3
19	3	NW	Soil strip in Field 3
20	3	NW	Soil strip in Field 3
21	3	NW	Soil strip in Field 3
22	3	NW	Soil strip in Field 3
23	3	S	Birds on the Wire
24	3	S	Birds on the Wire
25	3	N	Soil strip in Field 3
26	3	N	Soil strip in Field 3
27	3	NW	Soil strip in Field 3
28	3	NW	Soil strip in Field 3
29	3	N	Soil strip in Field 3
30	3	N	Soil strip in Field 3



Day 7: 11/12/2012

Photograph Number	Field Number	Direction Facing	Description
1	3	NE	Feature 5
2	3	NE	Feature 5
3	3	W	Feature 6 upon investigation
4	3	W	Feature 6 upon investigation
5	3	W	Feature 6 upon investigation
6	3	W	Feature 6 upon investigation
7	3	W	Feature 7 upon investigation
8	3	W	Feature 7 upon investigation
9	3	N	Feature 5 upon investigation
10	3	N	Feature 5 upon investigation
11	3	N	Feature 5 upon investigation
12	3		Finds from Feature 5
13	3		Finds from Feature 5
14	3	NE	Feature 5 upon investigation
15	3	NE	Feature 5 upon investigation
16	3	S	Feature 5 upon investigation
17	3	S	Feature 5 upon investigation
18	3	S	Feature 5 upon investigation
19	3	S	Feature 5 upon investigation
20	3	NW	Possible feature upon investigation
21	3	NW	Possible feature upon investigation
22	3	NW	Possible feature upon investigation
23	3	SE	Soil strip in Field 3
24	3	SE	Soil strip in Field 3
25	3	S	Soil strip in Field 3
26	3	S	Soil strip in Field 3
27	3	S	Soil strip in Field 3
28	3	S	Soil strip in Field 3
29	3	SW	Archaeological Monitoring
30	3	SW	Archaeological Monitoring
31	3	NW	Feature 8 upon investigation
32	3	NW	Feature 8 upon investigation
33	3	S	Soil Strip in Field 3
34	3	S	Soil Strip in Field 3
35	4	S	Soil Strip in Field 4
36	4	S	Soil Strip in Field 4
37	3	N	Soil strip in Field 3 upon completion
38	3	N	Soil strip in Field 3 upon completion
39	4	S	Soil strip in Field 4
40	4	S	Soil strip in Field 4
41	4	NW	Birds on spoil heap
42	4	N	Soil strip in Field 4
43	4	N	Soil strip in Field 4
44	4	N	Soil strip in Field 4
45	4	N	Soil strip in Field 4

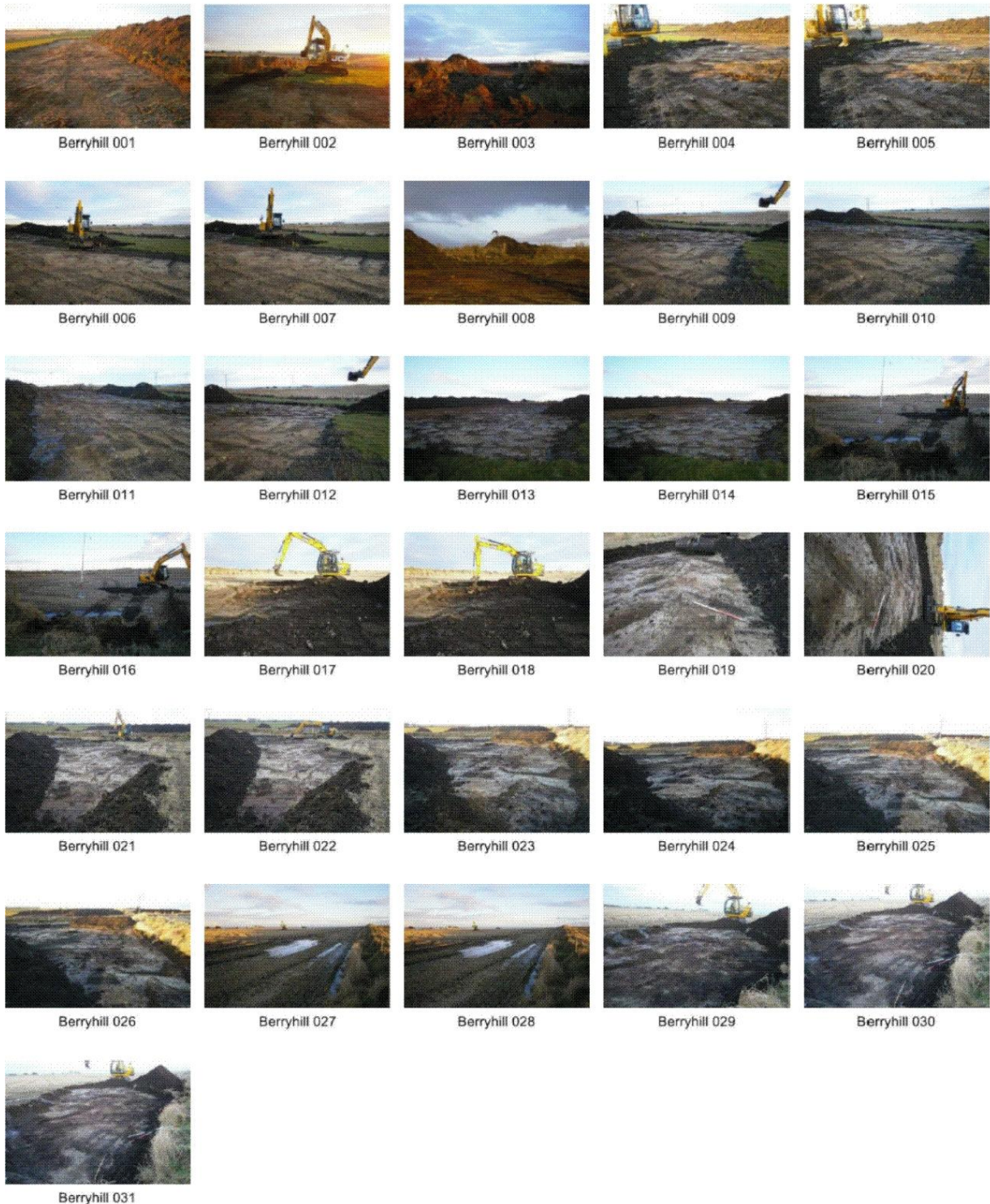
46	3	NW	Feature 8 upon investigation (2 nd camera)
47	3	NW	Feature 8: stone drain (2 nd camera)
48	3	SE	Soil Strip in Field 3 (2 nd camera)



Day 8: 12/12/2012

Photograph Number	Field Number	Direction Facing	Description
1	4	S	Soil strip in Field 4
2	4	E	Soil strip in Field 4
3	4	N	Route between Fields 3 and 4
4	4	S	Soil strip in Field 4
5	4	S	Soil strip in Field 4
6	4	E	Soil strip in Field 4

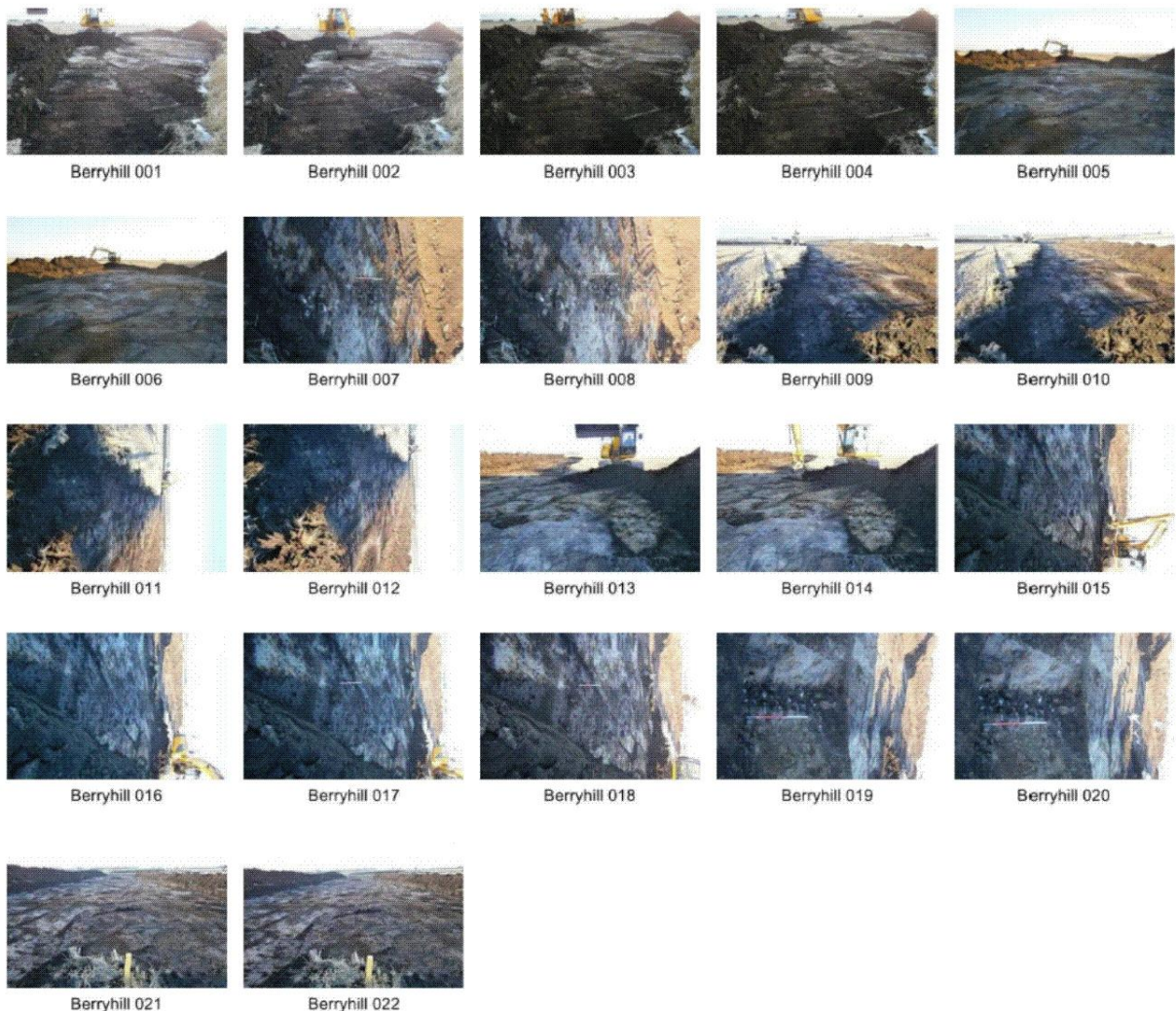
7	4	E	Soil strip in Field 4
8	4	N	Buzzard
9	4	E	Soil strip in Field 4
10	4	E	Soil strip in Field 4
11	4	NE	Soil strip in Field 4
12	4	E	Soil strip in Field 4
13	4	N	Soil strip in Field 4
14	4	N	Soil strip in Field 4
15	5	E	Beginning soil strip in Field 5
16	5	E	Beginning soil strip in Field 5
17	5	E	Soil strip in Field 5
18	5	E	Soil strip in Field 5
19	5	E	Feature 9: plough marks
20	5	E	Feature 9: plough marks
21	5	W	Soil strip in Field 5
22	5	W	Soil strip in Field 5
23	5	W	Soil strip in Field 5: completed
24	5	W	Soil strip in Field 5: completed
25	5	W	Soil strip in Field 5: completed
26	5	W	Soil strip in Field 5: completed
27	6	SE	Tracking round to start Field 6
28	6	SE	Tracking round to start Field 6
29	6	E	Starting soil strip in Field 6
30	6	E	Starting soil strip in Field 6
31	6	E	Starting soil strip in Field 6



Day 9: 13/12/2012

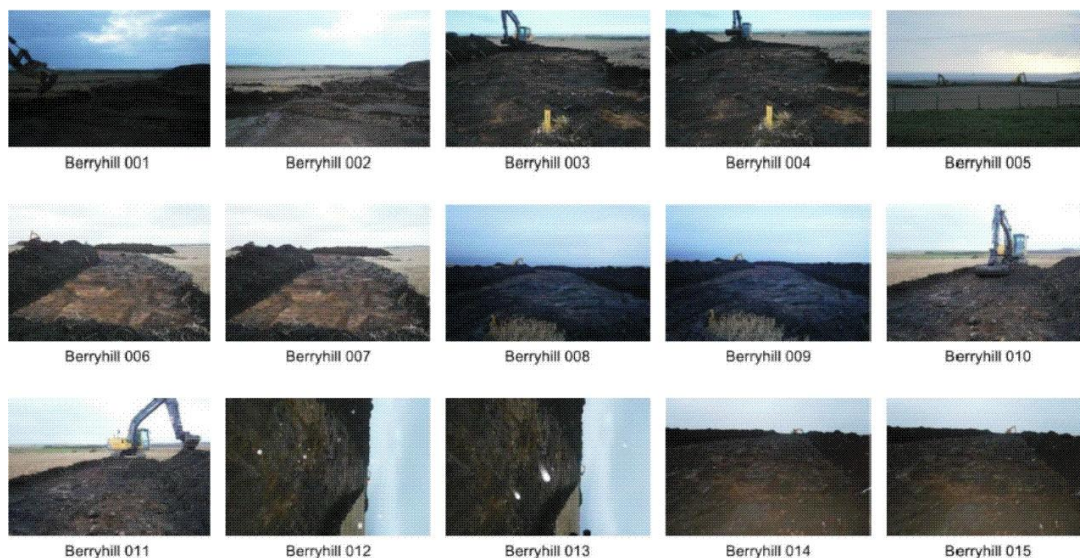
Photograph Number	Field Number	Direction Facing	Description
1	6	E	Soil strip in Field 6
2	6	E	Soil strip in Field 6
3	6	E	Soil strip in Field 6
4	6	E	Soil strip in Field 6

5	6	E	Soil strip in Field 6
6	6	E	Soil strip in Field 6
7	6	NE	Feature 10: stone drain
8	6	NE	Feature 10: stone drain
9	6	W	Soil strip in Field 6
10	6	W	Soil strip in Field 6
11	6	W	Soil strip in Field 6
12	6	W	Soil strip in Field 6
13	6	E	Soil strip in Field 6
14	6	E	Soil strip in Field 6
15	6	ENE	Feature 11: stone drain
16	6	ENE	Feature 11: stone drain
17	6	ENE	Feature 11: stone drain
18	6	ENE	Feature 11: stone drain
19	6	ENE	Feature 11: stone drain upon investigation
20	6	ENE	Feature 11: stone drain upon investigation
21	6	W	Soil strip in Field 6
22	6	W	Soil strip in Field 6



Day 10: 17/12/2012

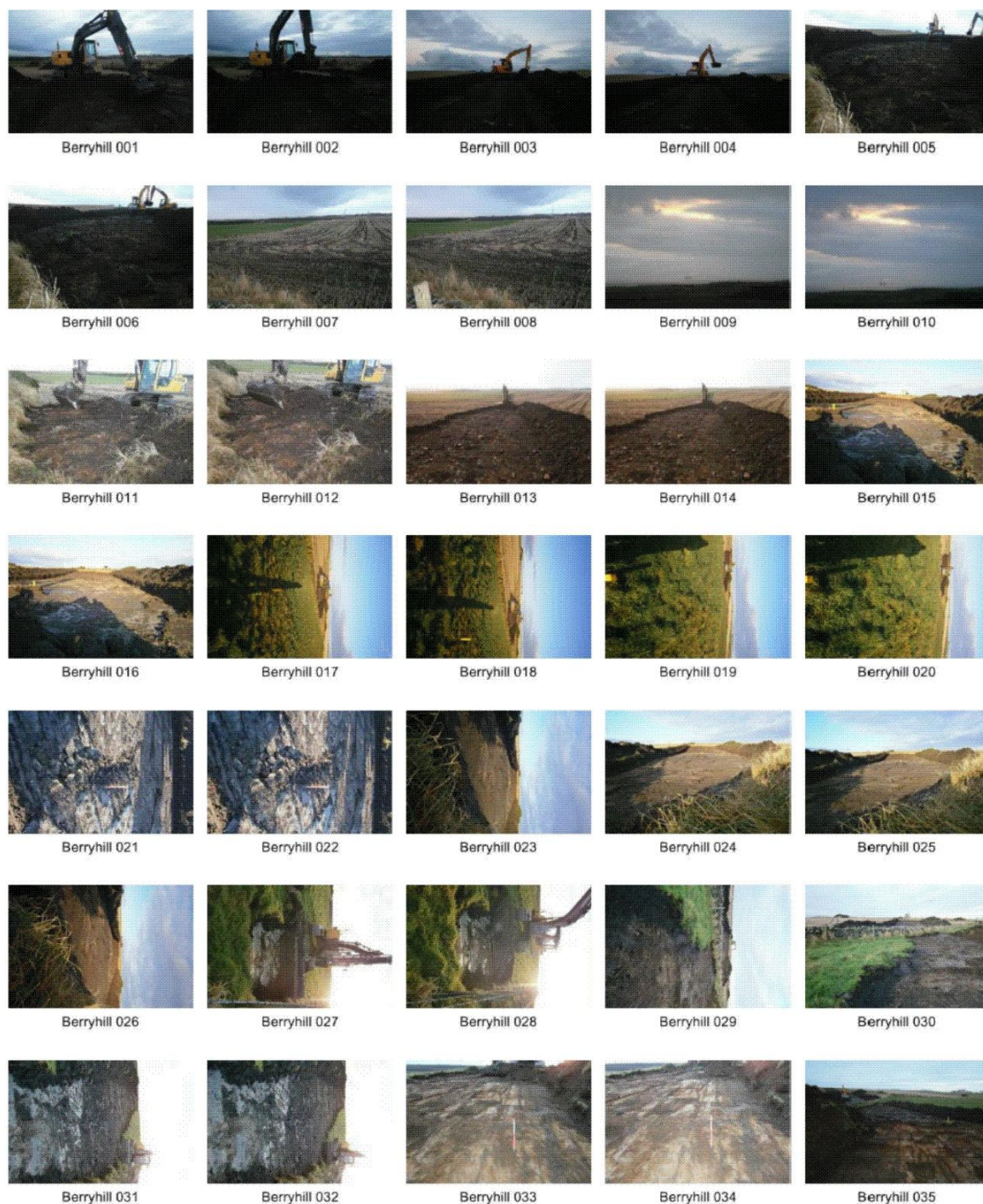
Photograph Number	Field Number	Direction Facing	Description
1	6	S	Soil strip in Field 6
2	6	S	Soil strip in Field 6
3	6	E	Soil strip in Field 6
4	6	E	Soil strip in Field 6
5	6	S	Soil strip in Field 6
6	6	NW	Soil strip in Field 6
7	6	NW	Soil strip in Field 6
8	6	NW	Soil strip in Field 6
9	6	NW	Soil strip in Field 6
10	6	S	Soil strip in Field 6
11	6	S	Soil strip in Field 6
12	6	N	Soil strip in Field 6
13	6	N	Soil strip in Field 6
14	6	N	Soil strip in Field 6
15	6	N	Soil strip in Field 6



Day 11: 18/12/2012

Photograph Number	Field Number	Direction Facing	Description
1	6	S	Soil strip in Field 6
2	6	S	Soil strip in Field 6
3	6	S	Backfilling in Field 6
4	6	S	Backfilling in Field 6
5	6	S	Backfilling in Field 6
6	6	N	Backfilling in Field 6
7	7	S	Route of soil strip into Field 7
8	7	S	Route of soil strip into Field 7

9	6	E	General view east
10	6	E	General view east
11	7	SE	Soil strip in Field 7
12	7	SE	Soil strip in Field 7
13	7	S	Soil strip in Field 7
14	7	S	Soil strip in Field 7
15	7	N	Soil strip in Field 7
16	7	N	Soil strip in Field 7
17	8	N	Route of soil strip into Field 8
18	8	N	Route of soil strip into Field 8
19	8	N	Route of soil strip into Field 8
20	8	N	Route of soil strip into Field 8
21	7	E	Feature 15: stone drain
22	7	E	Feature 15: stone drain
23	7	N	Soil strip in Field 7 completed
24	7	N	Soil strip in Field 7 completed
25	7	N	Soil strip in Field 7 completed
26	7	N	Soil strip in Field 7 completed
27	8	S	Beginning soil strip in Field 8
28	8	S	Beginning soil strip in Field 8
29	8	N	Soil strip in Field 8
30	8	N	Soil strip in Field 8
31	8	S	Soil strip in Field 8
32	8	S	Soil strip in Field 8
33	8	S	Soil strip in Field 8
34	8	S	Soil strip in Field 8
35	8	N	Soil strip in Field 8
36	8	N	Soil strip in Field 8



Day 12: 19/12/2012

Photograph Number	Field Number	Direction Facing	Description
1	4	E	Sunrise
2	4	E	Sunrise
3	4	E	Sunrise
4	8	N	Soil strip in Field 8
5	8	N	Soil strip in Field 8
6	8	N	Soil strip in Field 8

7	8	N	Soil strip in Field 8
8	8	N	Soil strip in Field 8
9	8	N	Soil strip in Field 8
10	8	N	Soil strip in Field 8
11	8	N	Soil strip in Field 8
12			Find 3
13			Find 3
14			Find 3
15			Find 3
16			Find 3
17	8	NE	Soil strip in Field 8
18	8	NE	Soil strip in Field 8
19	8	NE	Soil strip in Field 8
20	8	NE	Soil strip in Field 8
21	8	SW	Soil strip completed
22	8	SW	Soil strip completed

