

SCOTSTOWN MOOR, ABERDEEN
SITES AND MONUMENTS RECORD ENHANCEMENT
RADIO DETECTION FINDING STATION, CHILDREN'S CAMP, WWII PRACTICE
TRENCHES



Alison Cameron
Cameron Archaeology
20 October 2014

CONTENTS

INTRODUCTION	4
SCOTSTOWN MOOR RADIO DETECTION FINDING STATION	4
F1 aerial base?.....	5
F2 aerial base?.....	7
F3 'Rest Hut No 1'	7
F4 Concrete path.....	9
F5 Pillbox	9
F6 rectangular building 'No1'	11
F7 'Rest Hut No 2'	12
F16.....	17
F17.....	17
F18.....	18
F19.....	18
F20.....	19
F21.....	20
F22.....	21
F23.....	21
F24.....	21
F25.....	22
F26.....	22
CHILDREN'S CAMP	24
F9.....	27
F10.....	28
F11.....	29
F12.....	30
F13.....	30
F14.....	31
F15.....	31
REFERENCES	32
ACKNOWLEDGEMENTS	32
APPENDIX 1 PHOTOGRAPHS	33
APPENDIX 2 FEATURES RECORDED.....	52

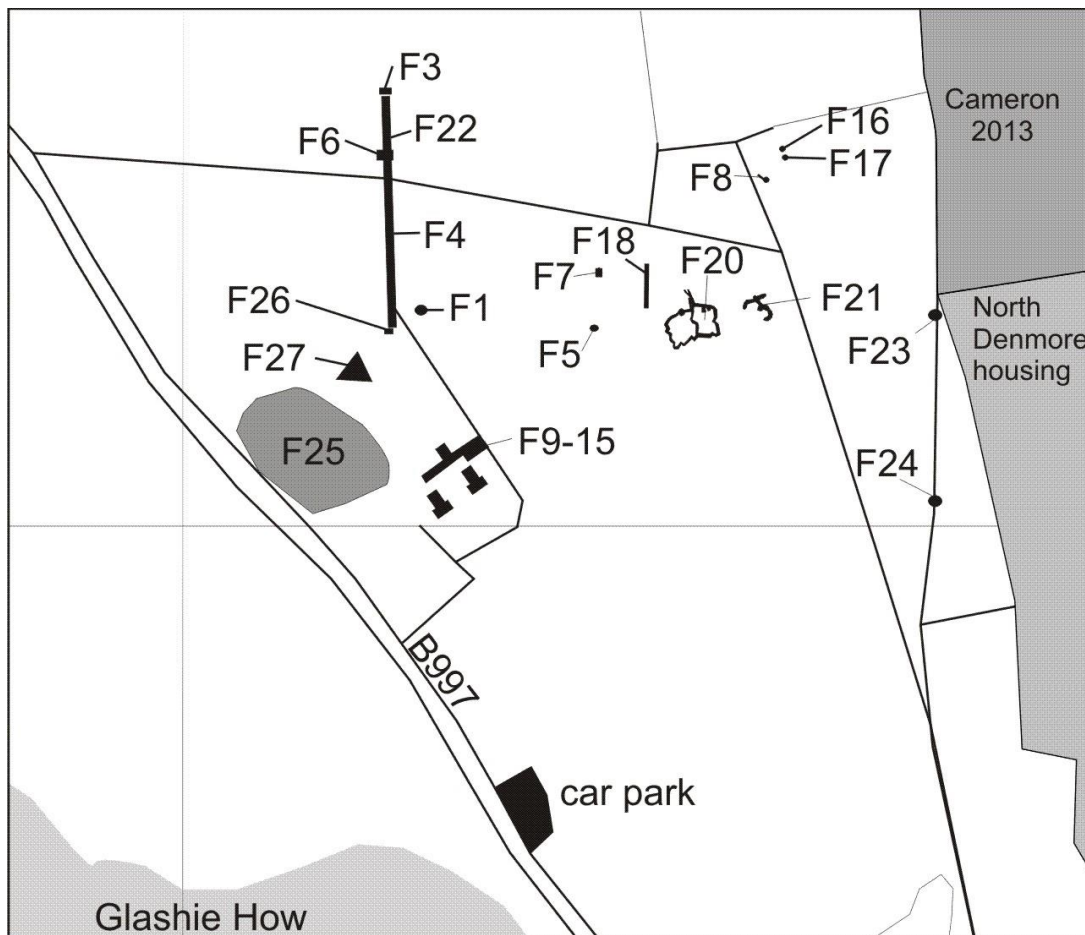
ILLUSTRATIONS

Cover concrete base F3 foreground with concrete path F4 and F6 (top); facing south

Illus 1 Plan of features recorded during this survey	4
Illus 2 F1 plan and elevation.....	5
Illus 3 Aerial base F1; facing SE	6
Illus 4 F1 circular plate with holes on top of fitting	6
Illus 5 F3 plan and elevations.....	7
Illus 6 F5 with concrete block (left); facing E	8
Illus 7 Plan showing features on Perwinnes Moss 11/1/1945	8
Illus 8 Path F4 with steps F22 (foreground); facing north	9
Illus 9 F5 plan and elevations.....	10
Illus 10 Pillbox F5; facing SW.....	11
Illus 11 F6; facing N	11
Illus 12 Plan and elevations of F6.....	12
Illus 13 F7 plan.....	13
Illus 14 F7 south frontage; facing N.....	14
Illus 15 F7 elevations	14
Illus 16 Plan of F7	15
Illus 17 F7; facing E	16
Illus 18 F7 central concrete pipe showing central cable fitting; facing E	16
Illus 19 Artists's impression of Ibsley Direction Finding Station	17
Illus 20 Concrete pedestal.....	17
Illus 21 hollow way; facing N	18
Illus 22 Trench F19 with rest hut 2 F7 (top); facing N	19
Illus 23 Section of trenches F20	20
Illus 24 Trenches F20 and F21.....	20
Illus 25 Concrete steps F22 with building F6 (top); facing S	21
Illus 26 Plan of building F26	22
Illus 27 Building F26; facing NW	23
Illus 28 Metal fitting F26A.....	23
Illus 29 Plan of Children's Camp structures.....	24
Illus 30 Plan showing the camp with 'Miss Hendry's additions'	25
Illus 31 Photographs of the camp 1932.....	26
Illus 32 Photographs of the camp 1940 F15 (left) F14 (centre) F12 (right); facing NW	26
Illus 33 Plan and elevations of Building 9 with brick detail	27
Illus 34 F9 SW wall; facing NE	28
Illus 35 F9 NE wall; facing W.....	28
Illus 36 concrete base F10; facing SW	29
Illus 37 Concrete base F11; facing N	29
Illus 38 F12; facing S.....	30
Illus 39 concrete base F13 with F14 (background); facing SE	30
Illus 40 concrete base F13 (left) with F14 (right); facing ENE	31
Illus 41 Detail of F15; facing SW	31
Illus 42 Camera points used in this survey S9-15 Children's Camp.....	33
Illus 43 Camera points used in this survey F3	33
Illus 44 Camera points used in this survey F6	34
Illus 45 Camera points used in this survey F5	34
Illus 46 Camera points used in this survey F7	35
Illus 47 Camera points used in this survey F26	35

INTRODUCTION

In May 2014 Cameron Archaeology carried out a photographic survey and standing buildings recording at sites on Scotstown Moor associated with the Radio Detection Finding Station, Children's Camp and WWII Practice Trenches for Judith Stones in Aberdeen City Council. Initial survey had been carried out by a team of volunteers led by David Harding in 1998; their survey plans were checked, amended and added to and additional buildings surveyed. Some buildings are now inaccessible.



Illus 1 Plan of features recorded during this survey

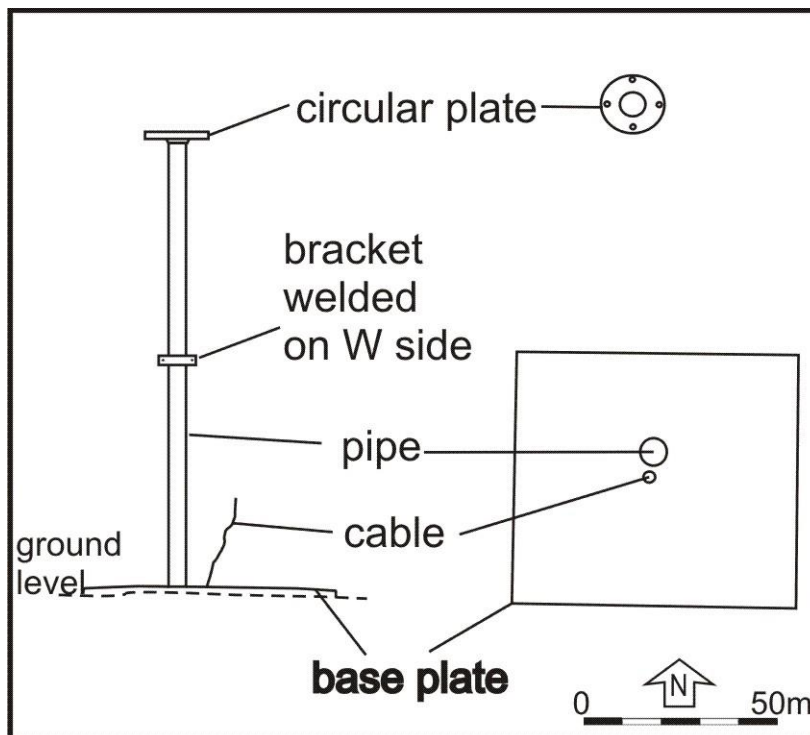
SCOTSTOWN MOOR RADIO DETECTION FINDING STATION

29.3.1940 is the first recording of what is variously known as a Wireless station, Radio Station, but is probably more correctly known as a WW2 Radio Direction Finding Station. Amongst papers in the City Archives is a letter from a representative of the organisers of Scotstown Children's Camp in response to a letter from the Air Ministry (27.3.1940) which had referred to the need to establish a Radio Station at Perwinnes. The children's camp organisers were referring to the difficulty of continuing the camp in the circumstances. At least 8 structures survive. It was established as part of system to keep track of friendly aircraft and to guide them coming in to Dyce, by providing one of several fixed points from which their position could be triangulated. Related to growing threat from air which culminated in B of Britain later that year. Key features of a World War 2 RDF Station of this sort would be transmission/ receiver beacons, transformer hut, back-up generator hut, as

well as a guard/rest hut and air-raid shelter. Some of these features can be identified here on the Moor, while it is also possible that some of the existing buildings of the children's camp were used for ancillary accommodation – there is a reference to a children's camp building being requisitioned in 1944, for example. The nature of the site means that there is little documentary evidence for it, but what we have from Air Ministry files gives us a few little glimpses. Construction work was registered as complete on 12 August 1940. In May 1944 the facility seems to have been involved in a military exercise by Scottish Command, which involved a paratroop landing by 'enemy' forces. The picture is not entirely clear, but it seems that SAS troops and French paratroopers were involved. One 'saboteur' was 'captured' at Perwinnes Moss after one D/F hut had been 'sabotaged'. Fortunately the site only suffered indirectly from real enemy action, when Scotstown moor was reportedly bombed during the large raid on Aberdeen which occurred on 21 April 1943 – bombs recorded as falling on Gordon barracks, Grandholm, Balgownie Links, Scotstown Moor. A crater at the southern end of the Moor, known locally as the 'Bombie', is said to date from that time. However, the NE weather did manage to knock the station out of action, when the D/F station at Perwinnes Moss was reportedly 'isolated from all communications' on 11 December 1944, when snow brought down all the phone and transmitter lines. Interestingly the GPO did repair them, but not until 13th, two days later. On 30 May 1949 it was recorded that the Air Ministry no longer required the Perwinnes Moss site, although wished to retain it, and a visit to the site is recorded as late as 13 February 1950. Timber towers were for receivers whilst steel was used for transmitters (Information from Aberdeen City Council Sites and Monuments Record).

F1 aerial base?

F1 is an iron cylinder 117cm high, diameter 6.5cm with a slightly domed square base plate 66cm wide; the fitting has a circular plate on the top 16.5cm diameter and 7mm thick and has four 1cm diameter holes spaced evenly around the edge. There is a lead covered cable protruding from the base with four rubber sheathed wires. A bracket 13cm long half way down the cylinder is welded on to the west side. This may be the base for an aerial.



Illus 2 F1 plan and elevation



Illus 3 Aerial base F1; facing SE



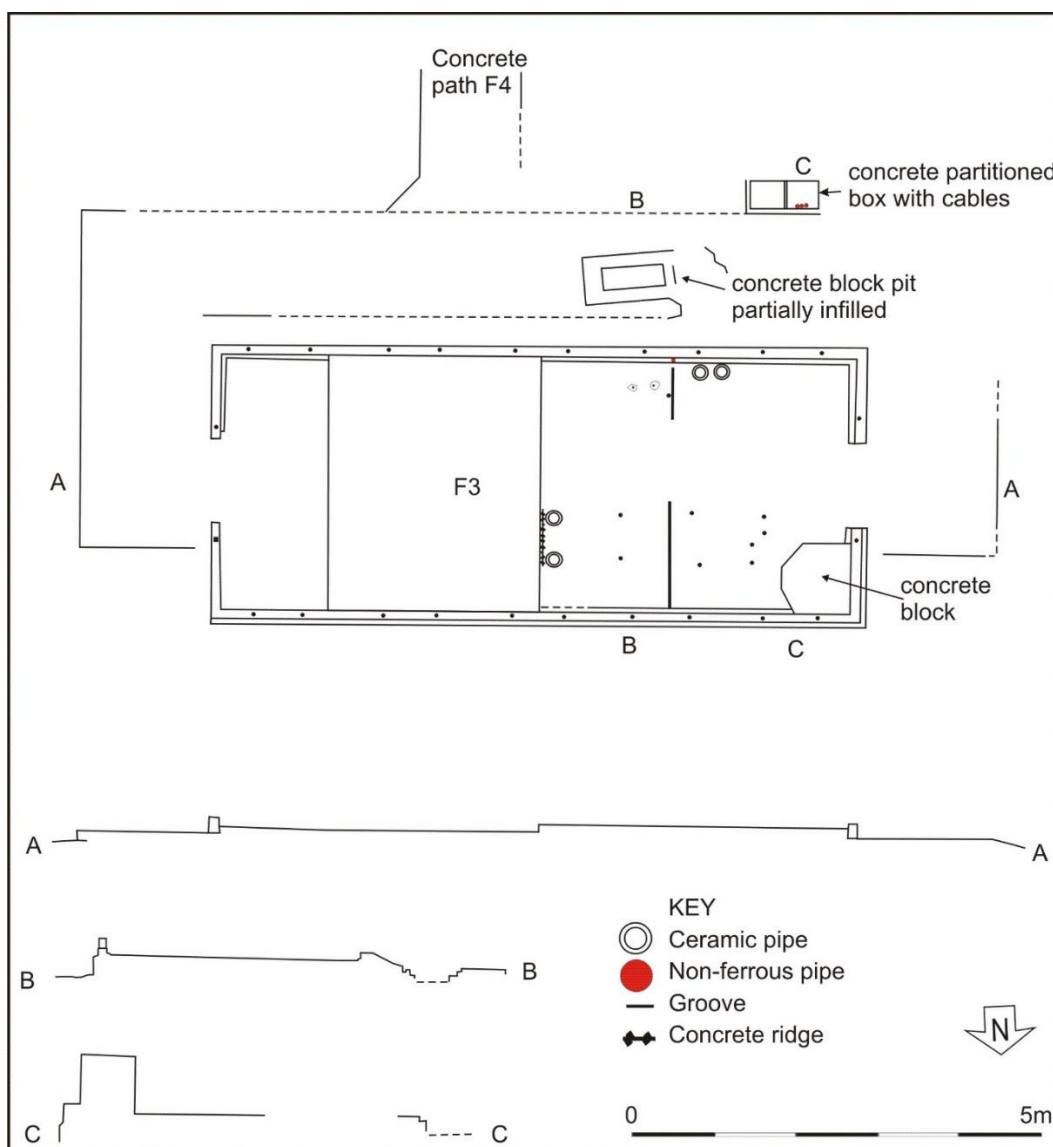
Illus 4 F1 circular plate with holes on top of fitting

F2 aerial base?

F2 is another possible aerial base not included in this survey.

F3 'Rest Hut No 1'

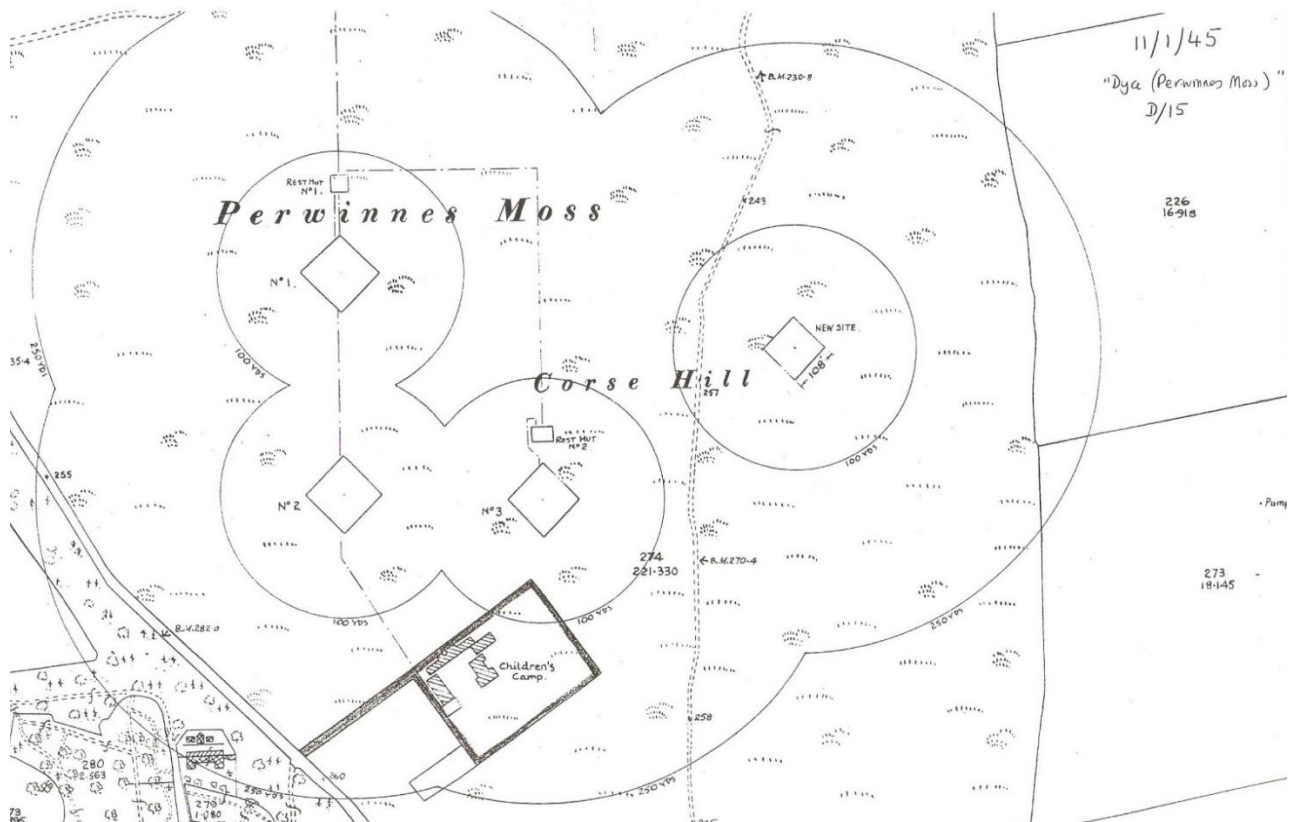
F3 is a concrete building base 7.9m long and 3.3m wide at the north end of concrete path F4. It is divided into four sections (1.3m, 2.5m, 1.4m and 2.2m internally; Illus 5) and has a concrete plinth at the NW corner 1m diameter and 0.63m high (Illus 6). There are two concrete lined rectangular recesses on the north side with evidence of cabling on the interior. There are ceramic pipes passing vertically through the floors of the two western rooms and metal fittings on the floor in these rooms suggesting these are bathroom and/or kitchen facilities with associated drainage. This building is labelled 'Rest Hut No 1' on the plan of 11/1/1945 (Illus 7).



Illus 5 F3 plan and elevations



Illus 6 F5 with concrete block (left); facing E



Illus 7 Plan showing features on Perwinnes Moss 11/1/1945

F4 Concrete path

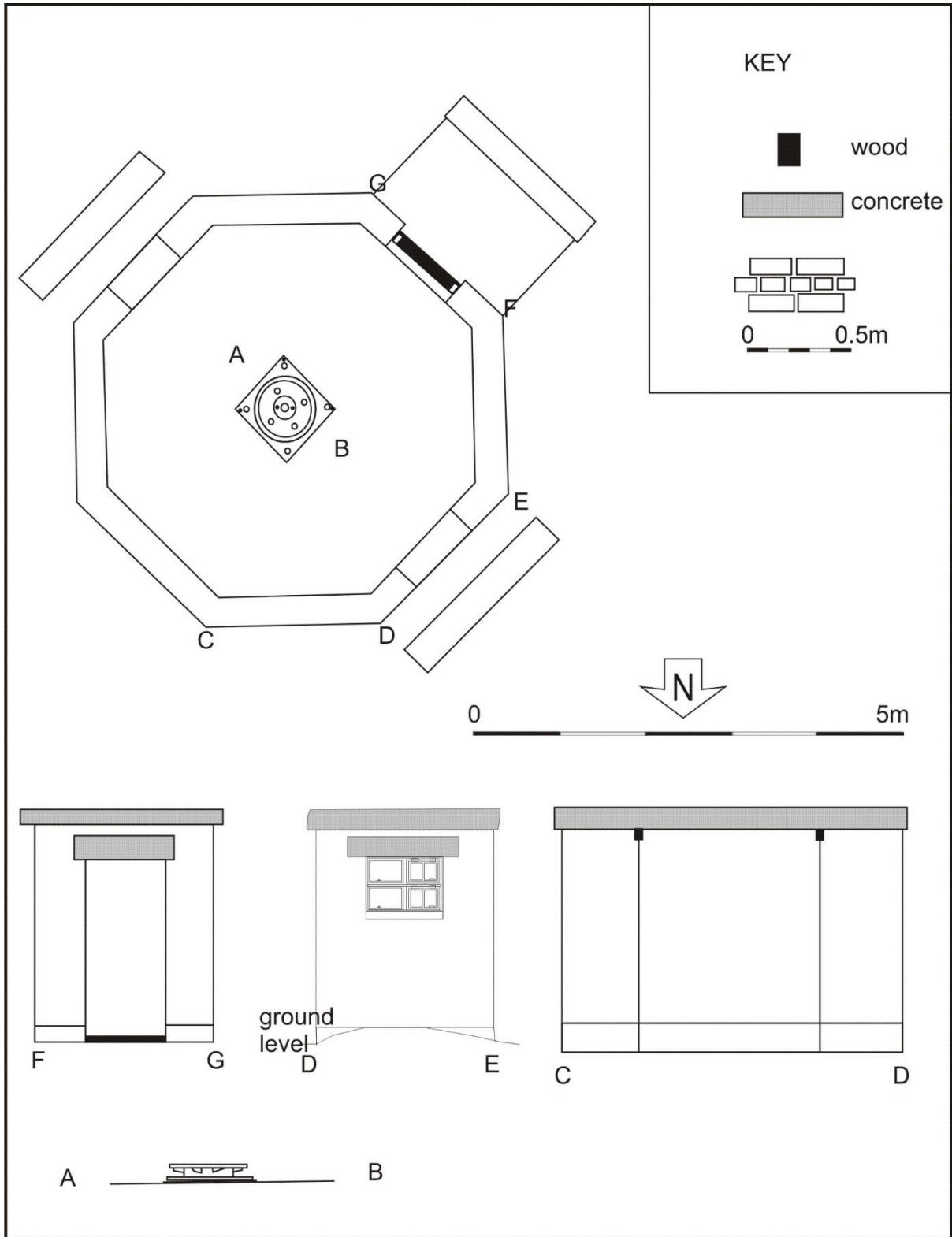
F4 is a N-S concrete path running from rest Hut No 1 in the north to structure F26 in the south.



Illus 8 Path F4 with steps F22 (foreground); facing north

F5 Pillbox

Octagonal brick pillbox 5m diameter with walls 2.09m long and 0.36m thick (Illus 9 and 10). Complete height 3m with 0.35m deep foundation, walls 2.31m high and concrete coping at top 0.23m high. Door in SW wall with brick blast wall 0.35m wide and 2.2m high and windows in NW and SE walls with blast walls. There is the remains of a concrete and brick plinth in the centre of the interior 0.85 m wide but this is now inaccessible and was surveyed during the first phase of this work in 1998.



Illus 9 F5 plan and elevations



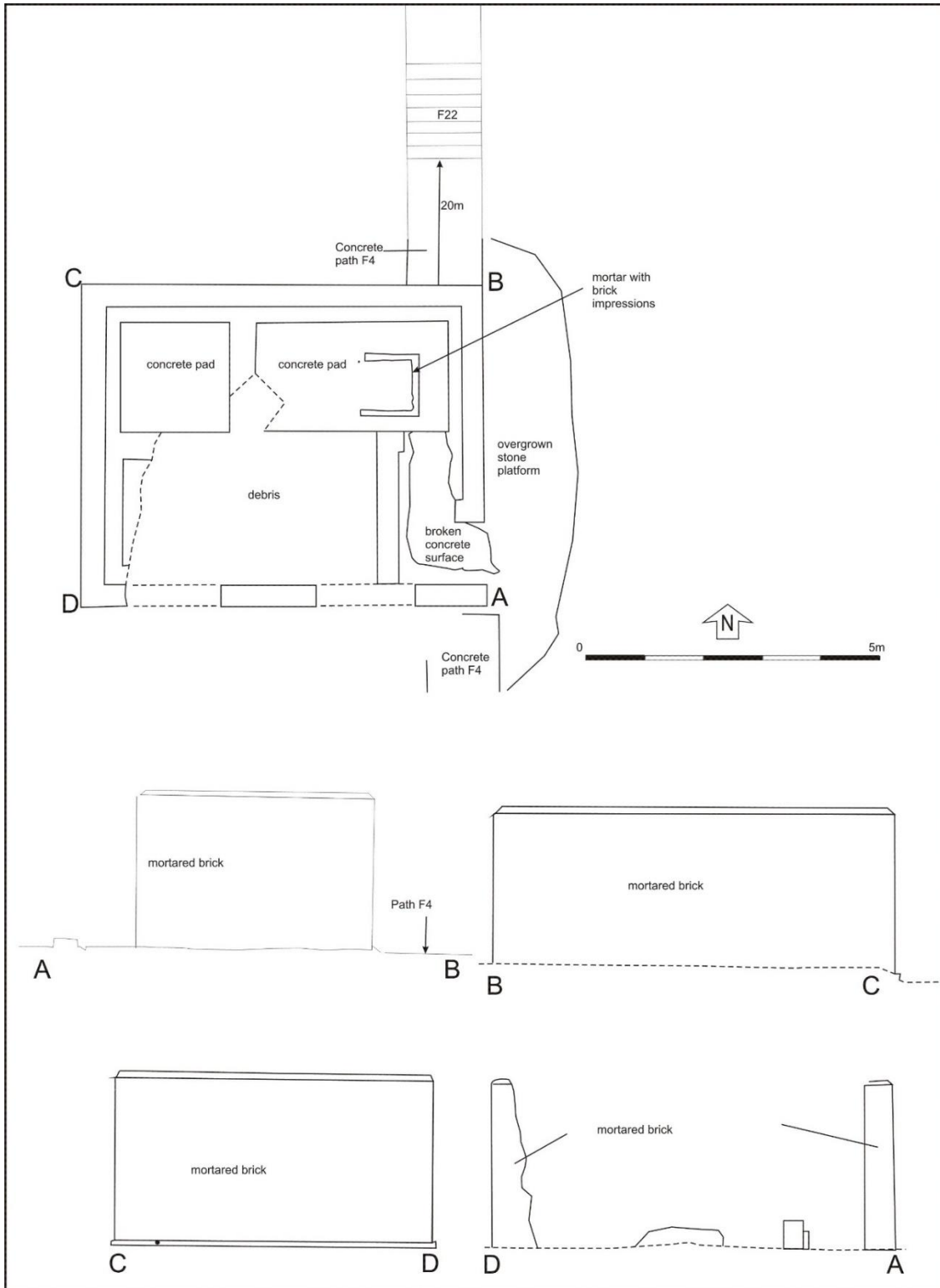
Illus 10 Pillbox F5; facing SW

F6 rectangular building 'No1'

Rectangular brick building on the line of path F4 between F3 at the north and F26 at the south; it is 6.6m W-E and 5.24m N-S with walls 0.37m wide (Illus 11). The south wall is partially demolished with debris fallen on the interior. Concrete pads survive on the interior (Illus 12). This is labelled 'No 1' on the plan of 11/1/1945 (Illus 7).



Illus 11 F6; facing N

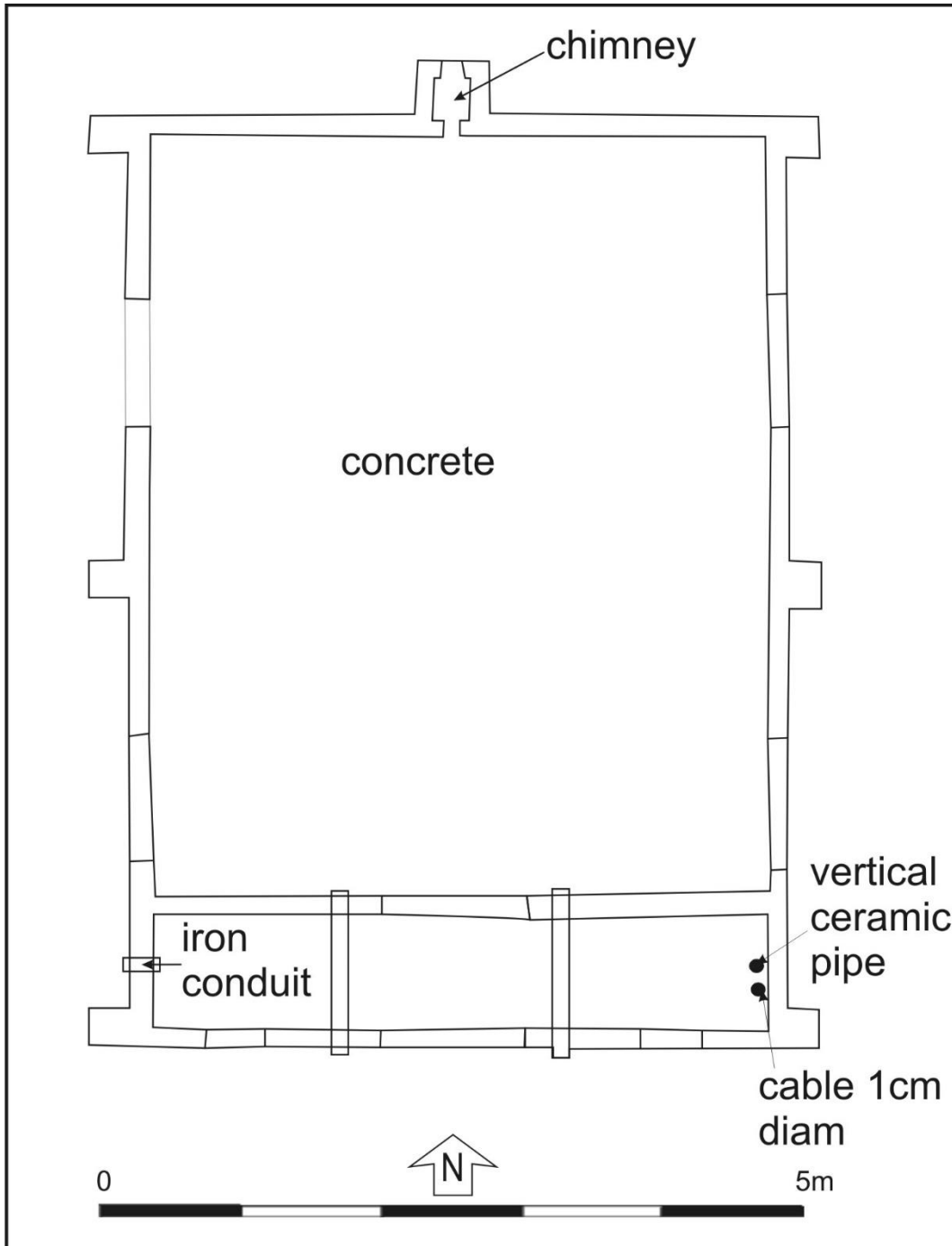


Illus 12 Plan and elevations of F6

F7 'Rest Hut No 2'

F7 is 5m wide and 6.4m long surviving to 3.3m high (Illus 13). There is now no access to the interior and details of the interior were recorded in 1998 and have been used for this report. The south facing front façade has a central doorway and two windows (Illus 14, 15). The

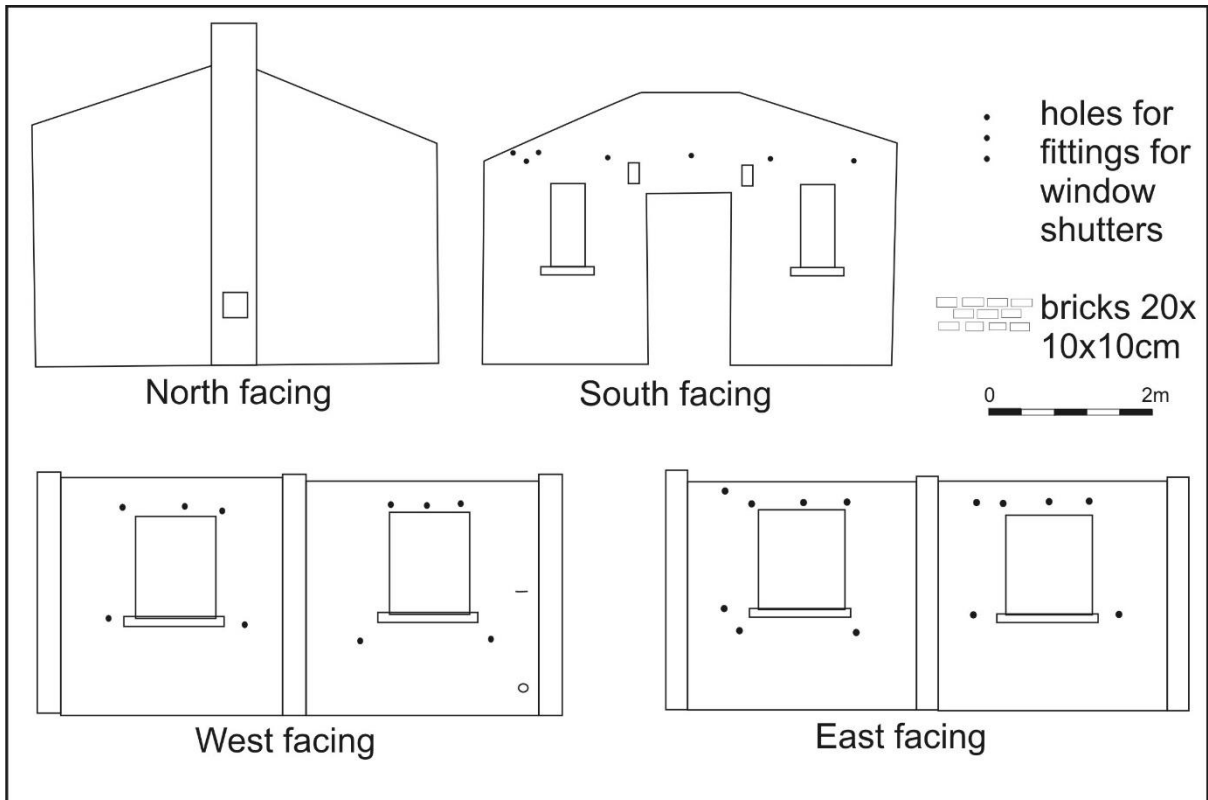
east and west elevations both have 2 windows and the north has a chimney with no other apertures. The building is brick with cement rendering on the exterior. This is labelled Rest Hut No 2' on the plan of 11/1/1945 (Illus 7). The building is divided into a large room to the north and a small room at the south where there are vertical ceramic pipes at the east end of this room for drainage.



Illus 13 F7 plan



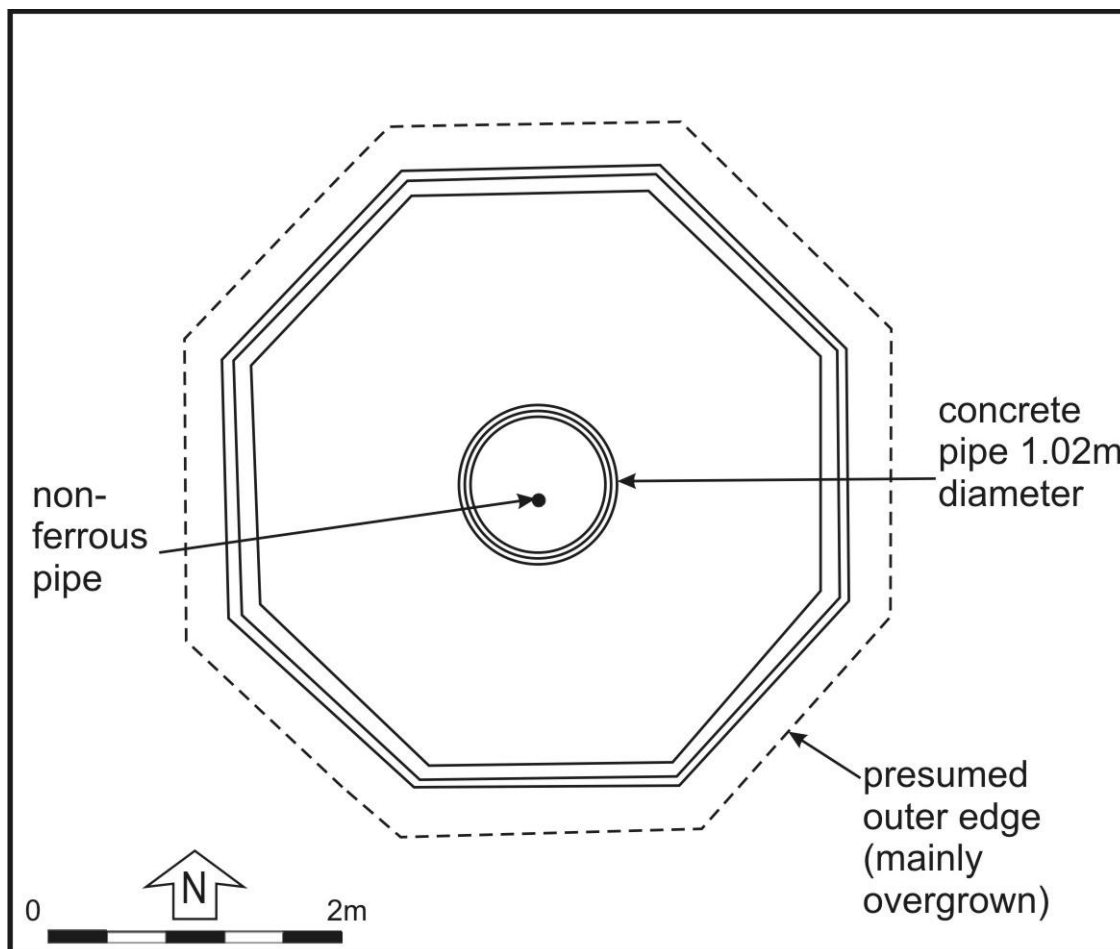
Illus 14 F7 south frontage; facing N



Illus 15 F7 elevations

F8 octagonal foundation

F8 is a concrete octagonal foundation 4m diameter with walls 1.64m long (Illus 16). Around the periphery a channel 0.35m wide which may represent the robber trench where the original wall has been removed. This was mainly overgrown in 1998 and had been partially dug away during this survey in May 2014 (Illus 17). There is a circular concrete pipe in the centre of the building 1.02m diameter with a central pipe 6cm diameter probably a housing for cables (Illus 18). This is labelled 'New Site' on the plan of 11/1/1945 (Illus 7). This is probably the foundation for a direction finding tower and may have been an octagonal brick base with a tower, possibly in wood. There is no rubble in the area but this may be buried nearby. An artists's impression (below) for a similar tower at Ibsley features a wooden tower above a brick base (Illus 19).



Illus 16 Plan of F7



Illus 17 F7; facing E



Illus 18 F7 central concrete pipe showing central cable fitting; facing E



Illus 19 Artists's impression of Ibsley Direction Finding Station (<http://www.newforestww2.org/ibsley-hf-df/>)

F16

Stone filled pit recorded in 1998 and no longer visible.

F17

F17 is a concrete pedestal with a central ceramic pipe (Illus 20) on the NE side of octagonal structure F8.



Illus 20 Concrete pedestal

F18

F18 is a hollow way c 2m wide (Illus 21) running N-S. It aligns with a path through the woodland.



Illus 21 hollow way; facing N

F19

F19 is a sunken trench between rest hut F7 and pillbox F5 which probably contained cabling (Illus 22).



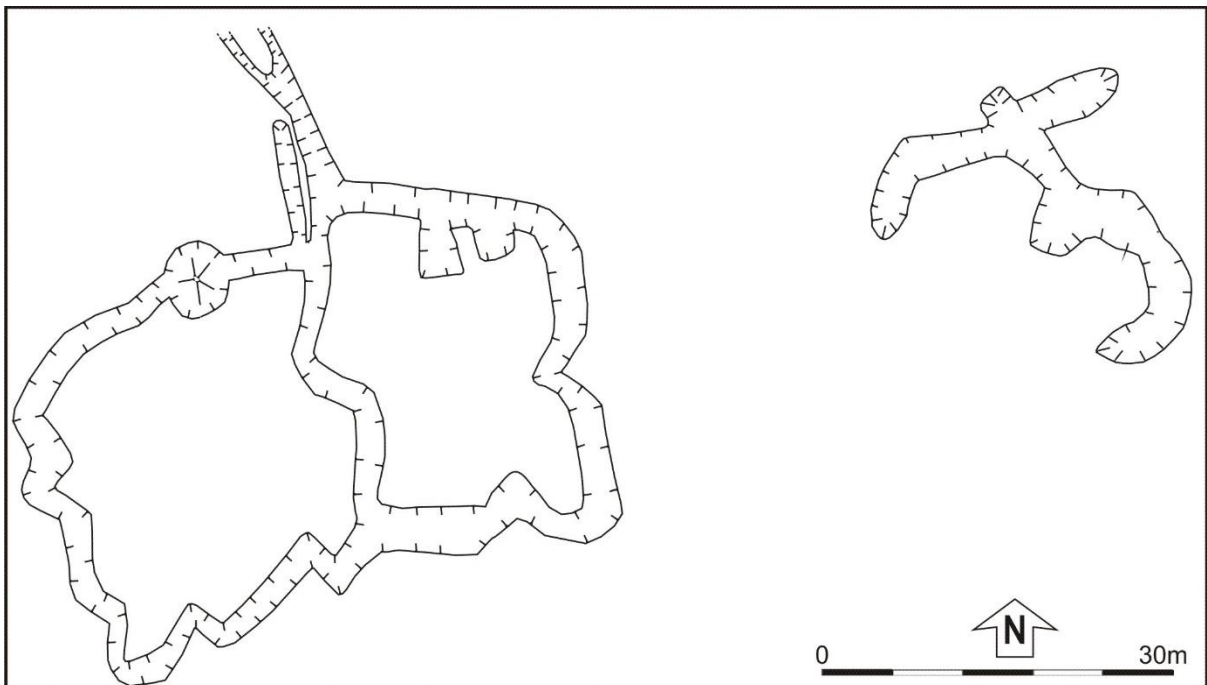
Illus 22 Trench F19 with rest hut 2 F7 (top); facing N

F20

F20 is a series of hand-dug zig-zagging u-shaped trenches forming two conjoined squares 48 x 49m in size (Illus 23). The area is now moderately heavily tree covered and some of the trenches have become infilled with fallen trees. The trenches vary in width but are typically 3.2-3.6m wide and up to 0.75m deep although they have been infilled. There is a natural subsoil and soil bank on the interior aspect formed from the upcast from the trench.



Illus 23 Section of trenches F20



Illus 24 Trenches F20 and F21

F21

F21 is a series of hand-dug zig-zagging u-shaped trenches forming a rough T-shape 27 x 25m in size, east of F20. The area is now moderately heavily tree covered and some of the trenches have become infilled with fallen trees. The trenches vary in width but are typically

3.2-3.6m wide and up to 0.75m deep although they have been infilled. There is a natural subsoil and soil bank on one side of the trench formed from the upcast from the trench.

These trenches may be Gordon Highlanders practice trenches and further historical research will be required to confirm this.

F22

F22 is a set of seven concrete steps in path F4 (Illus 24).



Illus 25 Concrete steps F22 with building F6 (top); facing S

F23

Boundary stone recorded 1998 and now missing.

F24

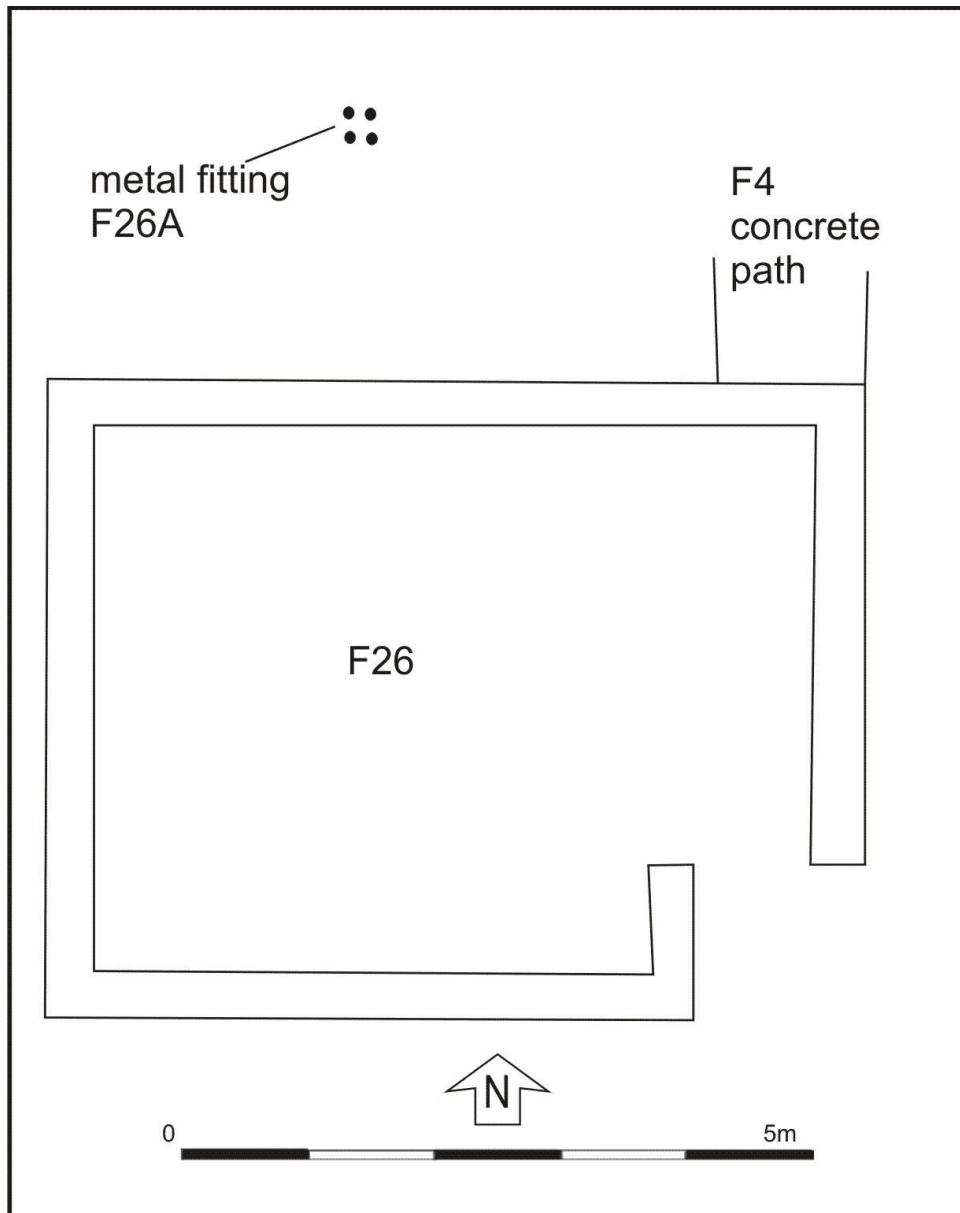
Boundary stone recorded 1998.

F25

This is an area of rig and furrow previously unrecorded and seen during this survey (Illus

F26

F26 is a rectangular brick building at the south end of path F4. It is 6.6m long and 5.2m wide. The walls are 0.37m wide and 2.58m high (Illus 25). This is labelled 'No 2' on the plan of 11/1/1945 (Illus 7). To the north is a metal fitting F26A consisting of four circular domed-headed plates each with a central hole set in an iron square formation (Illus 27).



Illus 26 Plan of building F26



Illus 27 Building F26; facing NW

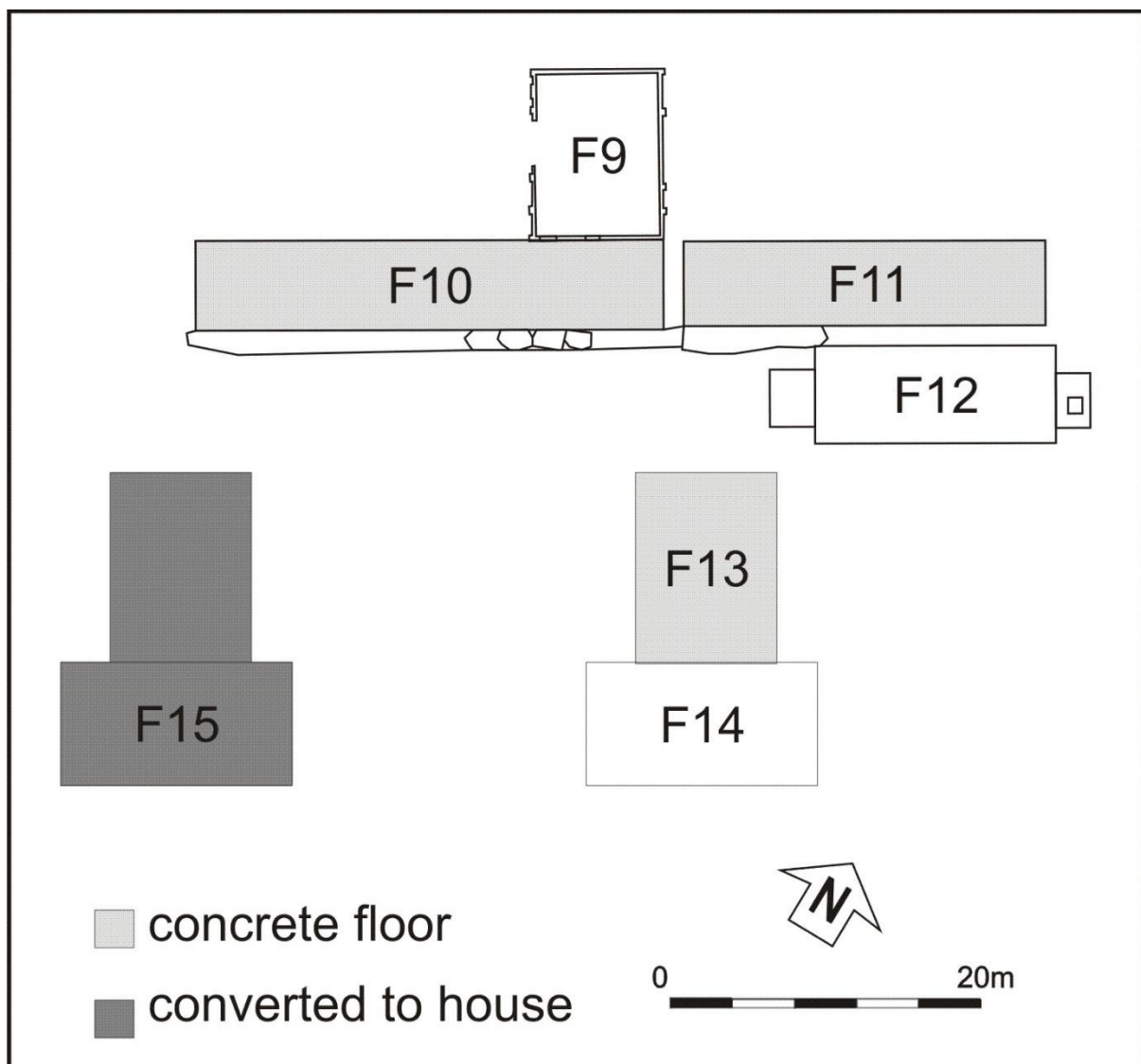


Illus 28 Metal fitting F26A

CHILDREN'S CAMP

Seven buildings associated with the former Children's Camp were recorded during this work (Illus 28).

The Scotstown Moor Children's Camp scheme originated in 1905. Its' object was 'to give ailing children a fortnight's holiday in healthy conditions, and in the worst cases, to give them six weeks on the moor'. Children were chosen mainly from the poorer areas of Aberdeen, if they were suffering from malnutrition, showed signs of tuberculosis or were recovering from a serious illness. They were nominated individually by doctors, teachers and in some cases, by the police. Food, drink and other necessities were donated by local firms and were supported by charitable donations. The scheme never recovered from its' shelving during WWII and it was wound up in 1952 (Information from Aberdeen City Council Sites and Monuments Record).

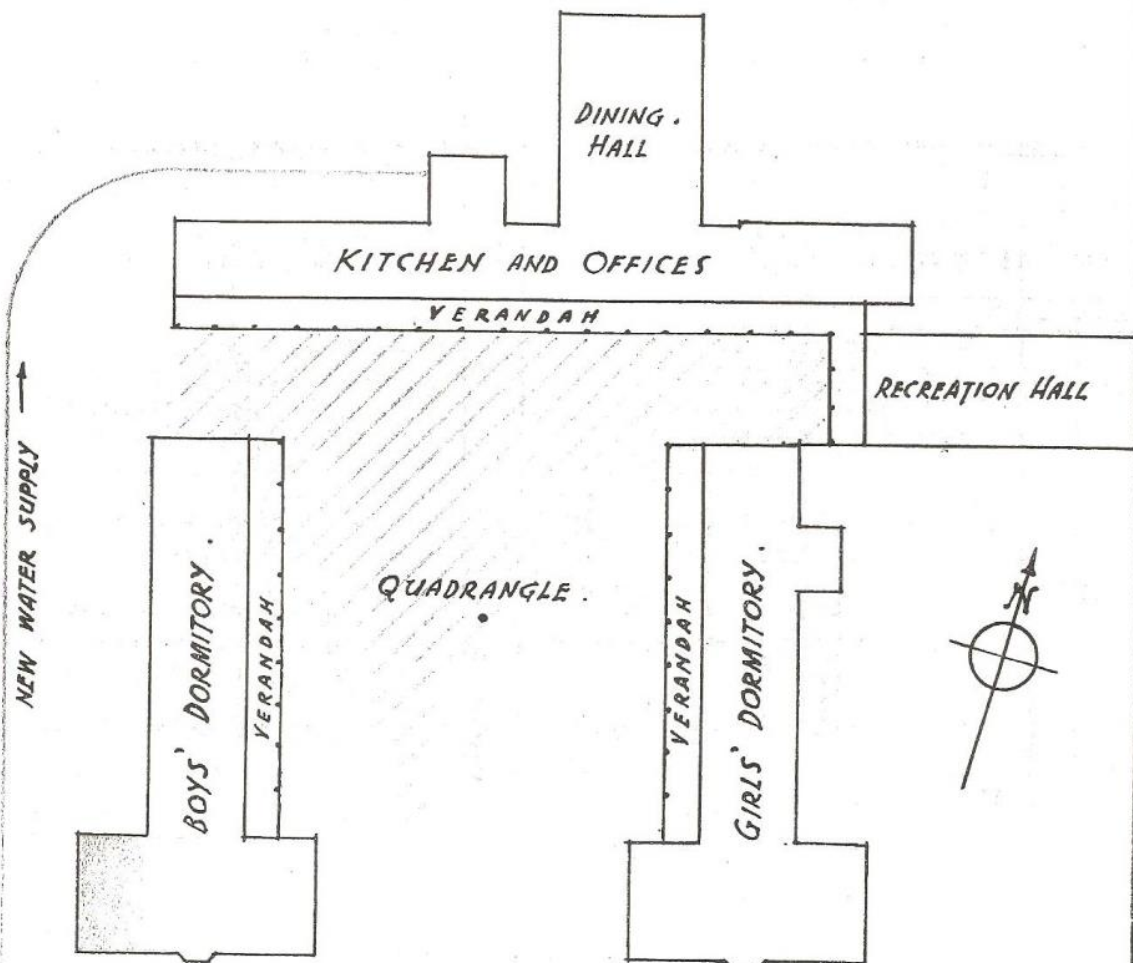


Illus 29 Plan of Children's Camp structures

THE · SCOTSTOWN · MOOR · CHILDREN'S · CAMP
 3. PLAN OF MISS HENDRY'S ADDITIONS · SHOWN IN PINK .



SOUTH · ELEVATION · OF · NEW · WINGS



GROUND · PLAN

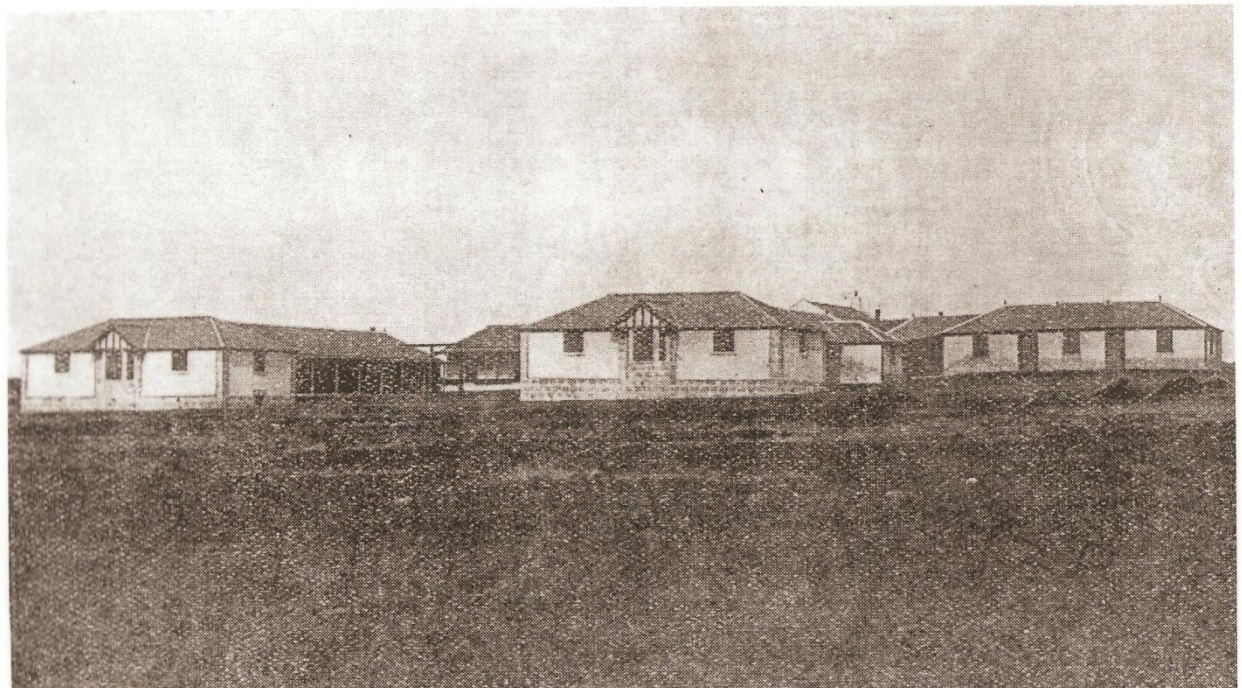
R.R. GALL, F.R.I.B.A.
 177 UNION STREET

Illus 30 Plan showing the camp with 'Miss Hendry's additions'



Children's Camp, Scotstown Moor, 1932

Illus 31 Photographs of the camp 1932 with F15 (left) F10 (centre) F14 (centre right) F12 (right); facing NW

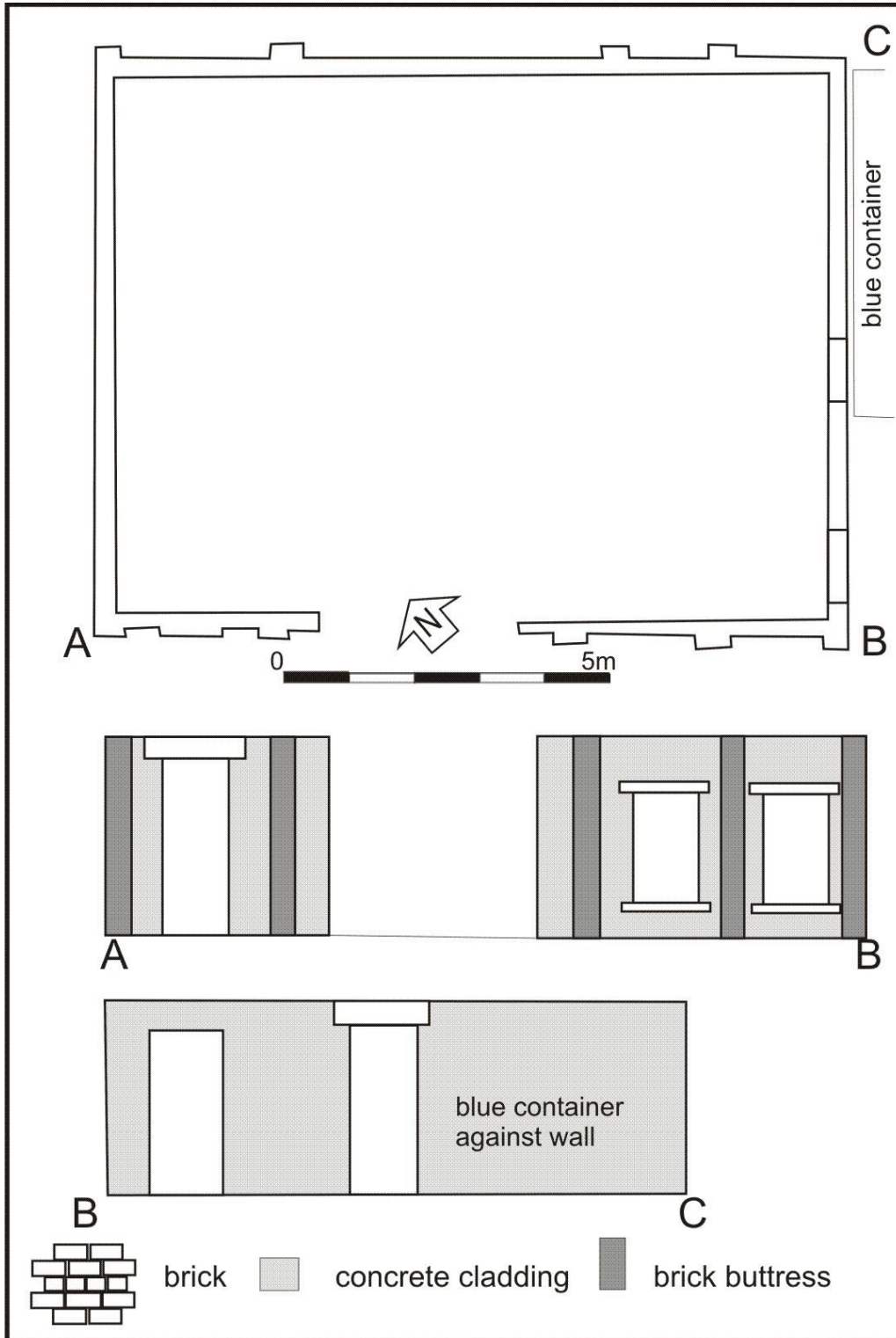


Children's Camp, Scotstown Moor, 1940

Illus 32 Photographs of the camp 1940 F15 (left) F14 (centre) F12 (right); facing NW

F9

Brick building F9 is 11.4m long and 8.8m wide with 0.24m thick walls with a 2cm concrete cladding on the exterior. It is labelled 'dining hall' on the 'plan of Miss Hendry's additions to the camp' (Illus 29).



Illus 33 Plan and elevations of Building 9 with brick detail



Illus 34 F9 SW wall; facing NE



Illus 35 F9 NE wall; facing W

F10

F10 is 30.4m long and 4.55m wide and survives as a concrete base. It is divided from F11 by a step and there is stone along the SE edge of the building, the remains of 'the verandah'. The building is labelled part of 'kitchen and offices' on the 'plan of Miss Hendry's additions to the camp' (Illus 29).



Illus 36 concrete base F10; facing SW

F11

F11 is 23.3m long and 5.9m wide and survives as a concrete base. It is labelled part of 'kitchen and offices' on the 'plan of Miss Hendry's additions to the camp' (Illus 29).



Illus 37 Concrete base F11; facing N

F12

F12 is a building 15.3m long and 6.2m wide with a concrete slope at the SW end and a concrete plinth at the NE end. It is now constructed of wooden slats but the foundation and base is probably part of the Childrens' Camp building and it is labelled 'recreation hall' on the 'plan of Miss Hendry's additions to the camp' (Illus 29). There was no access into the interior of the building during this survey.



Illus 38 F12; facing S

F13

F13 is a concrete base 19.2m long and 7.3m wide at the NW side of F14 (Illus 38). It is labelled part of 'girls' dormitory' on the 'plan of Miss Hendry's additions to the camp' (Illus 29).



Illus 39 concrete base F13 with F14 (background); facing SE

F14

F14 is a standing building 13.2m long and 6.45m wide (Illus 38, 39). It has stone base and quoins and is harled. It is labelled 'girls' dormitory' on the 'plan of Miss Hendry's additions to the camp' (Illus 29). There was no access into the interior of the building during this survey.



Illus 40 concrete base F13 (left) with F14 (right); facing ENE

F15

F15 is a modern house with harled walls but there are features visible which indicate that it was formerly part of the Children's Camp on the 1940 photograph (Illus 31). It is labelled 'boys' dormitory' on the 'plan of Miss Hendry's additions to the camp' (Illus 29).



Illus 41 Detail of F15; facing SW

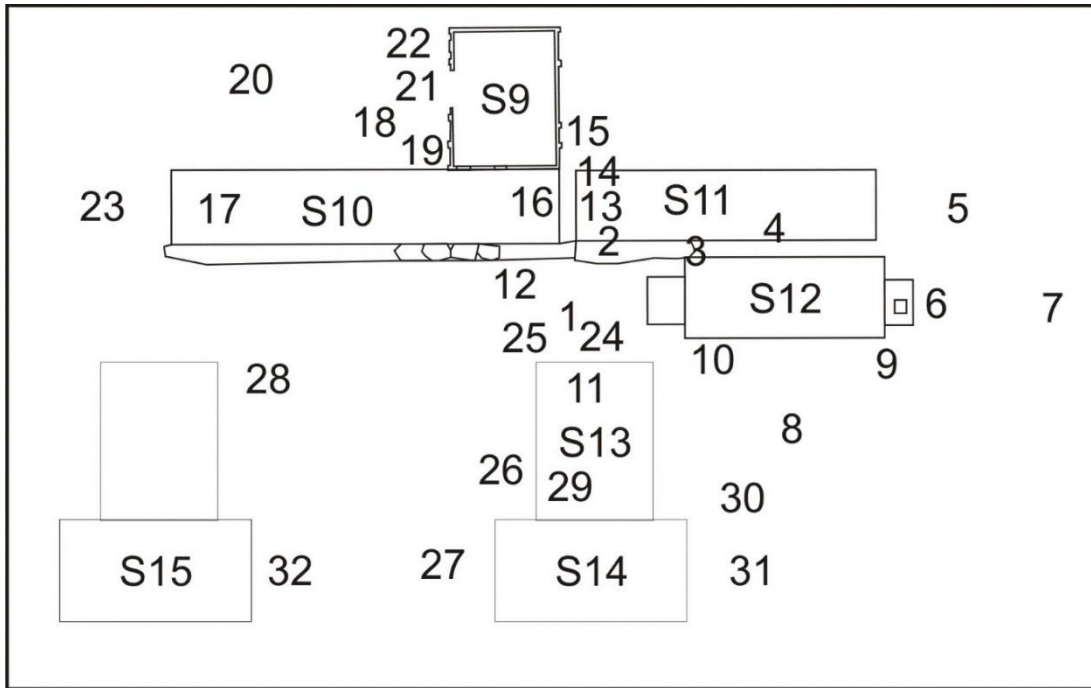
REFERENCES

Cameron A 2013 'Dubford, Aberdeen, AB23 8RL Archaeological Evaluation and Standing Building Survey'.

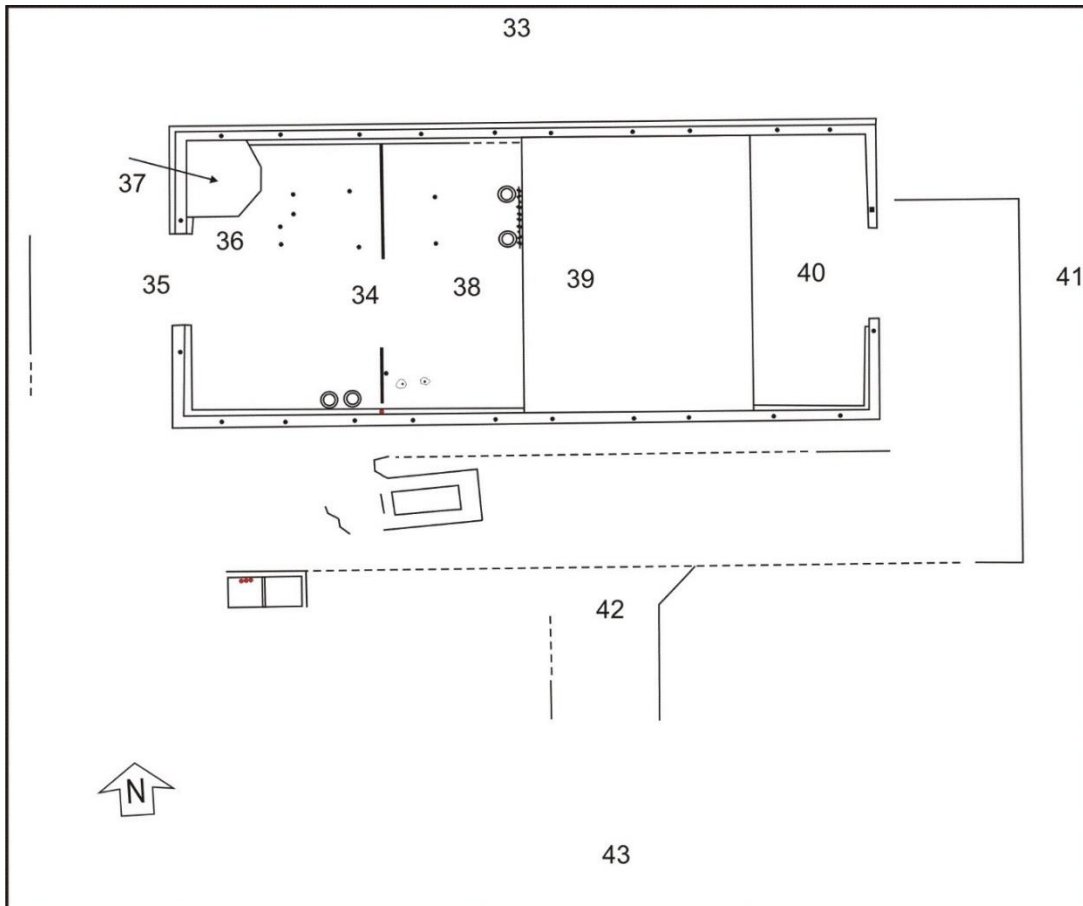
ACKNOWLEDGEMENTS

Thanks to Judith Stones for initiating this project and to David Harding for his assistance with this survey.

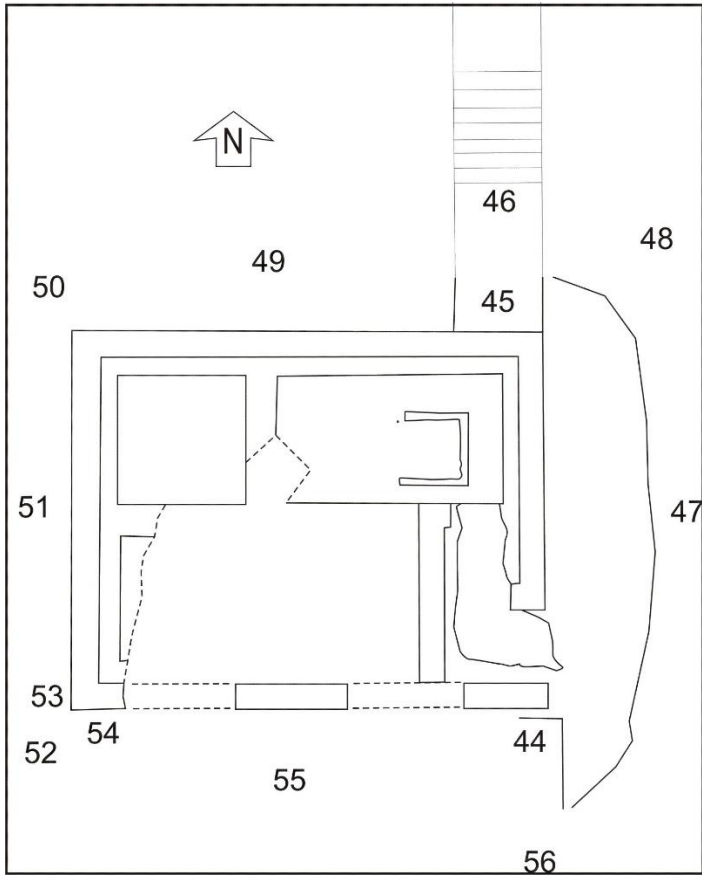
APPENDIX 1 PHOTOGRAPHS



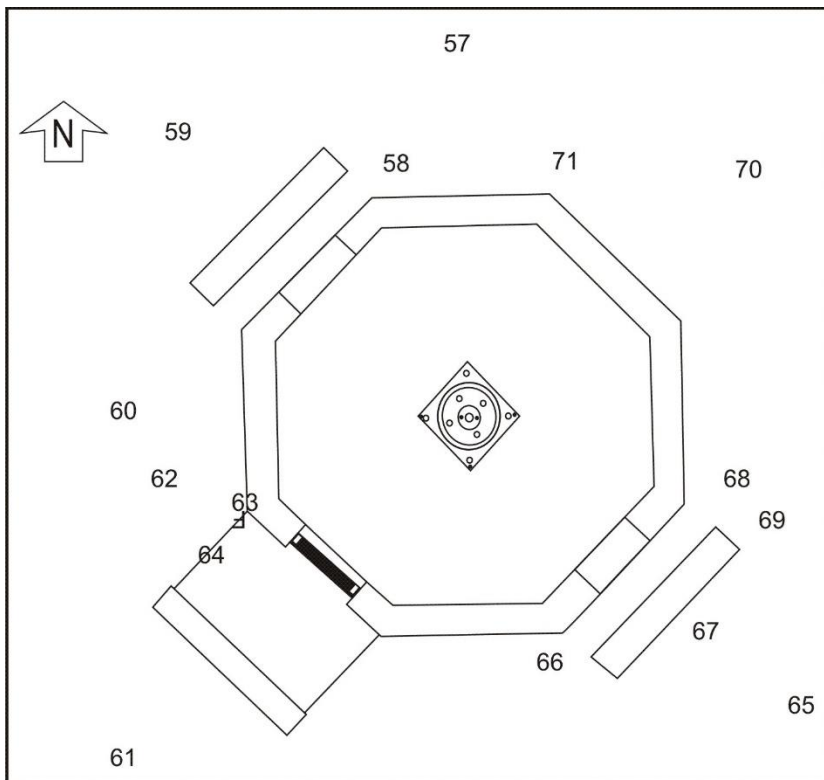
Illus 42 Camera points used in this survey S9-15 Children's Camp



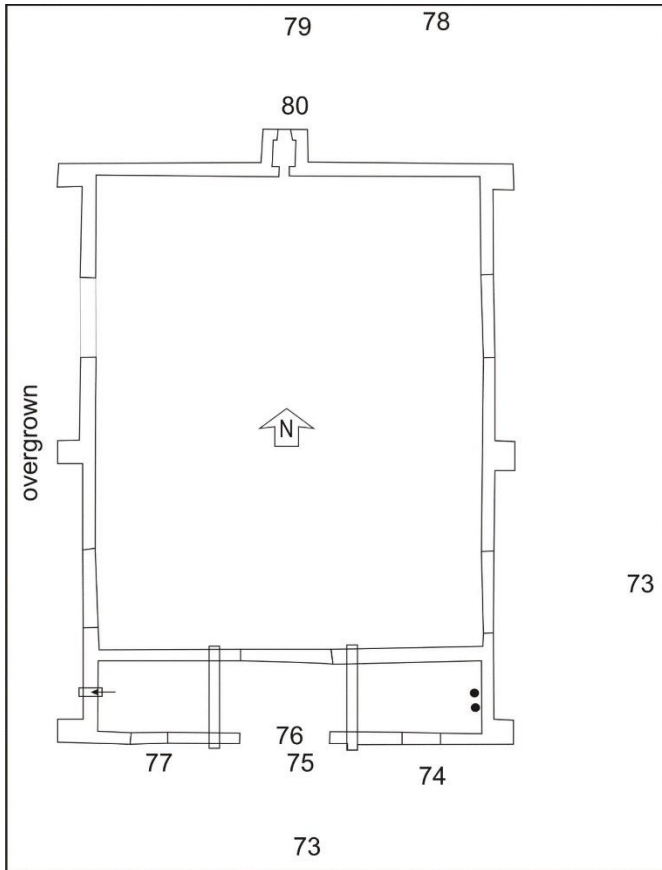
Illus 43 Camera points used in this survey F3



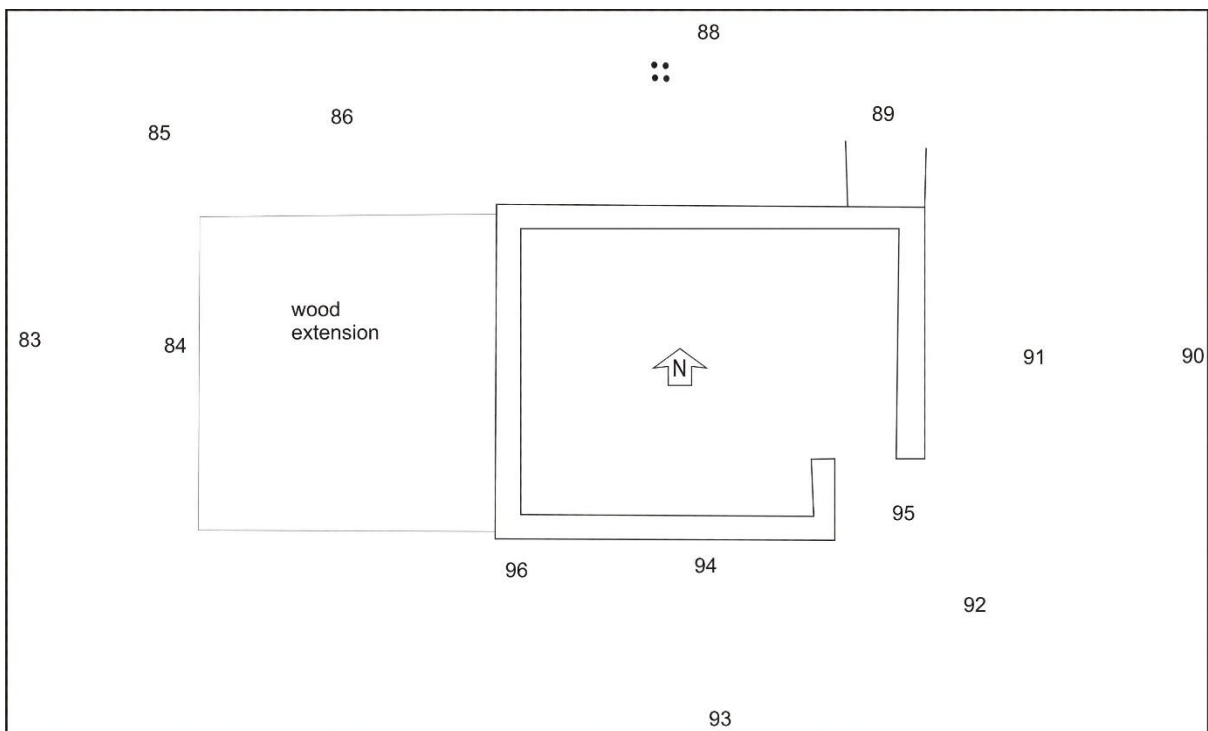
Illus 44 Camera points used in this survey F6



Illus 45 Camera points used in this survey F5



Illus 46 Camera points used in this survey F7



Illus 47 Camera points used in this survey F26

Photo no	Description	Facing	Camera point
DSC4080-83	F12 SW wall	NE	1
DSC4084-87	F12 SW corner	E	2
DSC4088-97	F12 NW wall wooden panelling	SE	3
DSC4098-4113	F12 NE wall	S	5/6/7
DSC4114-4126	F12 SE wall	NW	8/9/10
DSC4127-4129	F12 S corner	N	11
DSC4130-4135	F11 concrete floor	N	12
DSC4136-4139	F11 SW end	NW	12
DSC4140-4147	Concrete base F11 Sw end with F9 (right)	SW	13
DSC4148-4151	F9 SE corner	W	14
DSC4152-4158	F9 NE wall SE end	SW	15
DSC4159-4162	F9 SE wall	NW	16
DSC4163-4166	F9 SW corner	N	17
DSC4167-4170	F9 SW wall	NE	18
DSC4171-4175	F9 SW wall SE end	NE	19
DSC4176-4180	F9 SW wall	NE	20
DSC4181-4184	F9 SW wall NW end	N	21
DSC4185-4188	F9 SW wall NW end	NE	22
DSC4189-4192	F10 with F9 (left)	NE	17
DSC4193-4196	F10 with F9 (left)	NE	23
DSC4197-4200	F10	SW	16
DSC4879-4887	F13 with F14 (background)	SE	24/25
DSC4888-4893	F13 thick concrete	NE	26
DSC4894-4895	F15 camp building converted to house	SW	26
DSC4896-4899	F14 SW wall	NE	27
DSC4900-4901	F14 SW wall	E	28
DSC4902-4903	F12 (left) F13 (centre) F14 (right)	ENE	28
DSC4904	F12 with F13 (centre)	NE	28
DSC4905-4907	F9 (left) F12 (right)	N	28
DSC4908-4912	F14 (right) F13 (left)	E	28
DSC4913-4916	F13 (foreground) F14 (background)	SE	24
DSC4917-4919	F13 (foreground) F9 (top left) F12 (top right)	NW	29
DSC4920-4923	F13 NW wall SW end	SE	29
DSC4924-4925	F12 (right) F9 (left)	NW	29
DSC4926-4929	F12 NE corner	S	30
DSC4930-4933	F12 NE wall	SW	31
DSC4934	F15 camp building converted to house	S	32
DSC4935	F15 camp building converted to house	SW	32
DSC4936-4937	F15 camp building converted to house	SW	32
DSC4938-4951	Trig point F27		
DSC4952	F26 from trig point F27	N	
DSC4953	F26 West wall	E	83
DSC4954	F26 exterior west wall in wooden shed	E	84

DSC4955-58	F26	SE	85
DSC4959-60	F26 wooden shed attached to west wall with fallen wall masonry (foreground)	S	86
DSC4961	F26 fallen masonry detail	SE	87
DSC4962-65	F26 north wall	S	88
DSC4966-67	path F4	NNE	88
DSC4968-71	path F4	N	89
DSC4972-75	path F4 and F26	S	89
DSC4976-77	F26 east wall with fallen masonry	W	90
DSC4978	fallen masonry	N	91
DSC4979-83	F26 east wall with fallen masonry	W	91
DSC4984-87	F26	NW	92
DSC4988-91	F26 south wall	N	93
DSC4992-95	F26	N	94
DSC4996-99	F26 east wall brick detail	N	95
DSC5000-5003	F26 wall foundation below wooden shed wall	W	95
DSC5004-5009	F26 west wall brick detail	N	96
DSC5010-5011	F26 interior		
DSC5012	Metal fitting F26A		
DSC5013-5017	Rig and furrow F25		
DSC5018-5019	Hollow way F18		
DSC5020-5022	F7 east wall	W	72
DSC5023-5025	F7 south wall	N	73
DSC5026-5029	F7 south wall east window	N	74
DSC5030-5035	F7 south wall door	N	75
DSC5036-5037	F7 interior through blocked door	NW/NN W	76
DSC5038	F7 interior through blocked door	N	76
DSC5039-5042	F7 interior through blocked door	NE	76
DSC5043-5044	F7 south wall door	NE	75
DSC5045	F7 south wall west window	N	77
DSC5046	F7 north wall with chimney	SSW	78
DSC5047-5050	F7 north wall	S	79
DSC5051-5058	F7 chimney detail	S	80
DSC5059-5062	F7 south wall	NNE	81
DSC5063	F7 south wall	N	73
DSC5064-5066	F7 interior (Aberdeen City Council have complete survey of interior before inaccessible)		
DSC5067-5070	F7 brick detail 'NEWM'	NW	82
DSC5071	hollow between F5 and F7 probably sunken cable trench	N	71
DSC5072-75	F5	S	57
DSC5076-79	F5 NW bomb blast wall protecting window	SW	58
DSC5080-83	F5 NW bomb blast wall protecting window	SSW	58
DSC5084-87	F5	SE	59
DSC5088-89	F5 NW bomb blast wall protecting window	NE	60
DSC5090-91	F5	NE	61

DSC5092-93	F5	NNE	61
DSC5094-5100	F5	ENE	62
DSC5101-04	F5 door on SW wall with bomb blast wall	SE	63
DSC5105-06	F5	N	63
DSC5107-10	F5 floor between door in SW wall and bomb blast wall	SE	64
DSC5111-20	F5	NW	65
DSC5121-24	F5	NE	66
DSC5125-28	F5	NW	67
DSC5129-31	F5	SW	68
DSC5132-33	F5	SW	69
DSC5134-39	F5	SW	70
DSC5140-44	F5	SSW	71
DSC5145-48	F5	SSW	71
DSC5149-50	Dave recording F5		
DSC5151-53	Field clearance west of F7 with F7 (top)	E	
DSC5154	Path F4 with F26 (top)	SSW	
DSC5155	Path F4 with F26 (top)	SSW	
DSC5156-63	F1		
DSC5159-60	F1		
DSC5161-63	F1		
DSC5164-72	Path F4 through fields south to F26	S/SSW/SW	56
DSC5173-77	Concrete path F4 south of F6	N	56
DSC5178-84	F6 south wall partially demolished	N	55
DSC5185-89	F6 south wall SW corner	N	54
DSC5190-93	F6 west wall	E	51
DSC5194-95	F6 west wall	E	53
DSC5196-97	F6	NE	52
DSC5198-99	F6	SE	50
DSC5200-02	F6 north wall	S	49
DSC5203-06	F6	SW	48
DSC5207-10	F6 east wall	W	47
DSC5211-14	Path F4 with F6 (top)	S	46
DSC5215-18	Path F4 from F6 to steps F22	N	46
DSC5219-20	Dave recording path F4 south of F6	S	44
DSC5221-23	demolished walls inside F4	NW	44
DSC5224	F3 from steps F22	N	43
DSC5225-30	F3	NW	42
DSC5231-34	F3	W	40
DSC5235-38	F3 floor east end	E	39
DSC5239-42	F3 floor west end with plinth	W	39
DSC5243-48	F3 concrete plinth	E	35
DSC5249-52	F3 concrete plinth	N	36
DSC5253-56	F3 concrete plinth	E	35
DSC5257-60	F3 concrete floor in central area of base	E	34

DSC5261-63	concrete base F3 foreground with concrete path F4 and F6 (top);	S	33
DSC5264-69	concrete base F3 foreground with concrete path F4 and F6 (top);	S	33
DSC5270	Field clearance between F3 and F8	E	
DSC5271	former field boundary N of F8		
DSC5272-3	Field clearance		
DSC5274	Machine trenches on west side F8		
DSC5275-78	Concrete base F8	E	
DSC5279-82	Concrete base F8 central aperture	E	
DSC5283-84	Concrete base F8 disturbance on south side	S	
DSC5285-88	Concrete base F8 disturbance on south side	W	
DSC5289-93	Concrete base F8 disturbance on south side		
DSC5294-99	Concrete base F8 disturbance on south side	W	
DSC5300-01	Disturbed ground E of F8	E	
DSC5302-17	Concrete plinth F17		
DSC5318-22	Concrete plinth F17		
DSC5323-24	Concrete plinth F17		
DSC5325-26	F20		
DSC5327-28	F20		
DSC5329	F20		
DSC5330	F20		
DSC5331-32	F20		
DSC5333-34	F20		
DSC5335-40	F20		
DSC5341-47	F20		
DSC5348-49	F20		
DSC5350-51	F20		
DSC5352-54	F20		
DSC5355	F20		
DSC5356	F20		
DSC5357-58	F20		
DSC5359	F20		
DSC5360	F20		
DSC5361	F20		
DSC5362-64	F20		
DSC5365-66	F20		
DSC5367-68	F20		
DSC5369-70	F20		
DSC5370-72	F20		
DSC5373-75	F20		
DSC5376	F20		
DSC5377-80	F20		
DSC5381-82	F20		
DSC5383-85	F20		
DSC5386-87	F20		

DSC5388-91	F20		
DSC5392-95	F20		
DSC5396-97	F20		
DSC5398-5401	F20		
DSC5402-3	F20		
DSC540-3	F20		
DSC5404-5	F20		
DSC5406-7	F20		
DSC540811	F20		
DSC5412-13	F20		
DSC5414-18	F20		
DSC5419-20	F20		
DSC5421-22	F20		
DSC5423	F20		
DSC5424-27	F20		
DSC5428-31	F20		
DSC5432-33	F20		
DSC5434-37	F20		
DSC5438-43	Hollow way with F7	NW	
DSC5444-45	Hollow way F18	N	
DSC5446-47	Hollow way F18	S	
DSC5717	path on east side F21	S	
DSC5718-19	F21		
DSC5721-25	F21		
DSC5726-27	F21		
DSC5728-29	F21		
DSC5730-35	F21		
DSC5736-37	F21		
DSC5738-41	F21		
DSC5742-45	F21		
DSC5746-47	F21		
DSC5748-49	F21		
DSC5750-51	F21		
DSC5752-53	F21		
DSC5754-55	F21		
DSC5756-58	F21		
DSC5759-60	F21		
DSC5761-62	F21		
DSC5763-64	F21		
DSC5765-66	F21		
DSC5767-70	F21		
DSC5771-72	F21		
DSC5773-74	F21		
DSC5775-78	F21		
DSC5779-81	F21		

DSC5782-87	F21		
DSC5788-91	F21		
DSC5792-93	F21		
DSC5794-95	F21		
DSC5796-99	F21		
DSC5800-01	F21		
DSC5802-03	F21		
DSC5804-07	F21		
DSC5808-14	F21		
DSC5815-20	F21		
DSC5821-22	F21		
DSC5823-25	F21		
DSC5826-27	F21		
DSC5828-29	F21		
DSC5830-31	F21		
DSC5832-33	F21		
DSC5834-35	F21		
DSC5836	path between F20 and F21	S	
DSC5837-38	F20		
DSC5839-42	F20		
DSC5843-44	F20		
DSC5845-46	F20		
DSC5847	F20		
DSC5848-49	F20		
DSC5850-51	F20		
DSC5852-55	F20		
DSC5856-59	F20		
DSC5860-61	F20		
DSC5862-65	F20		
DSC5866-76	F20		
DSC5877-82	F20 NE corner point A	SW	
DSC5884-86	Hollow way F18 from modern path with F7 (right)	W	
DSC5887	Hollow way F18 from modern path	S	
DSC5888	Hollow way F18 from modern path	N	
DSC5889	F7	W	
DSC5890	F7 right F5 left	W	
DSC5891-92	F7 west overgrown wall	E	
DSC5893-94	Path F4 from F6 to steps F22	N	
DSC5895	Path F4 with F6 (top)	S	
DSC5896	Steps F22	N	
DSC5897	Steps F22	N	
DSC5898-99	Steps F22 with F6 top	S	
DSC5900	Concrete path F4 from F22 with F6 (top)	S	
DSC5901-2	Concrete path F4 from F3	S	



DSC_4083.JPG



DSC_4084.JPG



DSC_4091.JPG



DSC_4092.JPG



DSC_4101.JPG



DSC_4106.JPG



DSC_4107.JPG



DSC_4113.JPG



DSC_4114.JPG



DSC_4121.JPG



DSC_4122.JPG



DSC_4129.JPG



DSC_4130.JPG



DSC_4139.JPG



DSC_4140.JPG



DSC_4147.JPG



DSC_4148.JPG



DSC_4154.JPG



DSC_4155.JPG



DSC_4162.JPG



DSC_4163.JPG



DSC_4170.JPG



DSC_4171.JPG



DSC_4180.JPG



DSC_4181.JPG



DSC_4188.JPG



DSC_4189.JPG



DSC_4196.JPG



DSC_4197.JPG



DSC_4882.JPG



DSC_4883.JPG



DSC_4884.JPG



DSC_4893.JPG



DSC_4894.JPG



DSC_4899.JPG



DSC_4900.JPG



DSC_4902.JPG



DSC_4905.JPG



DSC_4906.JPG



DSC_4907.JPG



DSC_4908.JPG



DSC_4909.JPG



DSC_4916.JPG



DSC_4917.JPG



DSC_4923.JPG



DSC_4924.JPG



DSC_4929.JPG



DSC_4930.JPG



DSC_4934.JPG



DSC_4935.JPG



DSC_4936.JPG



DSC_4937.JPG



DSC_4938.JPG



DSC_4940.JPG



DSC_4941.JPG



DSC_4948.JPG



DSC_4952.JPG



DSC_4953.JPG



DSC_4954.JPG



DSC_4955.JPG



DSC_4960.JPG



DSC_4961.JPG



DSC_4962.JPG



DSC_4967.JPG



DSC_4968.JPG



DSC_4975.JPG



DSC_4976.JPG



DSC_4977.JPG



DSC_4978.JPG



DSC_4979.JPG



DSC_4987.JPG



DSC_4988.JPG



DSC_4995.JPG



DSC_4996.JPG



DSC_5003.JPG



DSC_5004.JPG



DSC_5012.JPG



DSC_5013.JPG



DSC_5014.JPG



DSC_5015.JPG



DSC_5016.JPG



DSC_5017.JPG



DSC_5018.JPG



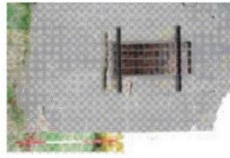
DSC_5019.JPG



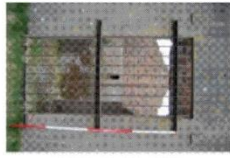
DSC_5020.JPG



DSC_5025.JPG



DSC_5026.JPG



DSC_5031.JPG



DSC_5036.JPG



DSC_5037.JPG



DSC_5038.JPG



DSC_5041.JPG



DSC_5042.JPG



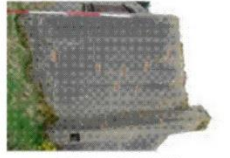
DSC_5043.JPG



DSC_5044.JPG



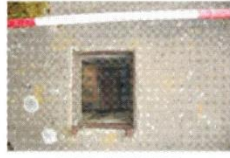
DSC_5045.JPG



DSC_5046.JPG



DSC_5047.JPG



DSC_5057.JPG



DSC_5058.JPG



DSC_5059.JPG



DSC_5064.JPG



DSC_5065.JPG



DSC_5066.JPG



DSC_5068.JPG







DSC_5382.JPG



DSC_5385.JPG



DSC_5387.JPG



DSC_5389.JPG



DSC_5390.JPG



DSC_5392.JPG



DSC_5395.JPG



DSC_5396.JPG



DSC_5401.JPG



DSC_5404.JPG



DSC_5406.JPG



DSC_5407.JPG



DSC_5411.JPG



DSC_5412.JPG



DSC_5415.JPG



DSC_5416.JPG



DSC_5417.JPG



DSC_5420.JPG



DSC_5421.JPG



DSC_5426.JPG



DSC_5429.JPG



DSC_5430.JPG



DSC_5431.JPG



DSC_5432.JPG



DSC_5435.JPG



DSC_5438.JPG



DSC_5444.JPG



DSC_5445.JPG



DSC_5446.JPG



DSC_5447.JPG



DSC_5717.JPG



DSC_5718.JPG



DSC_5725.JPG

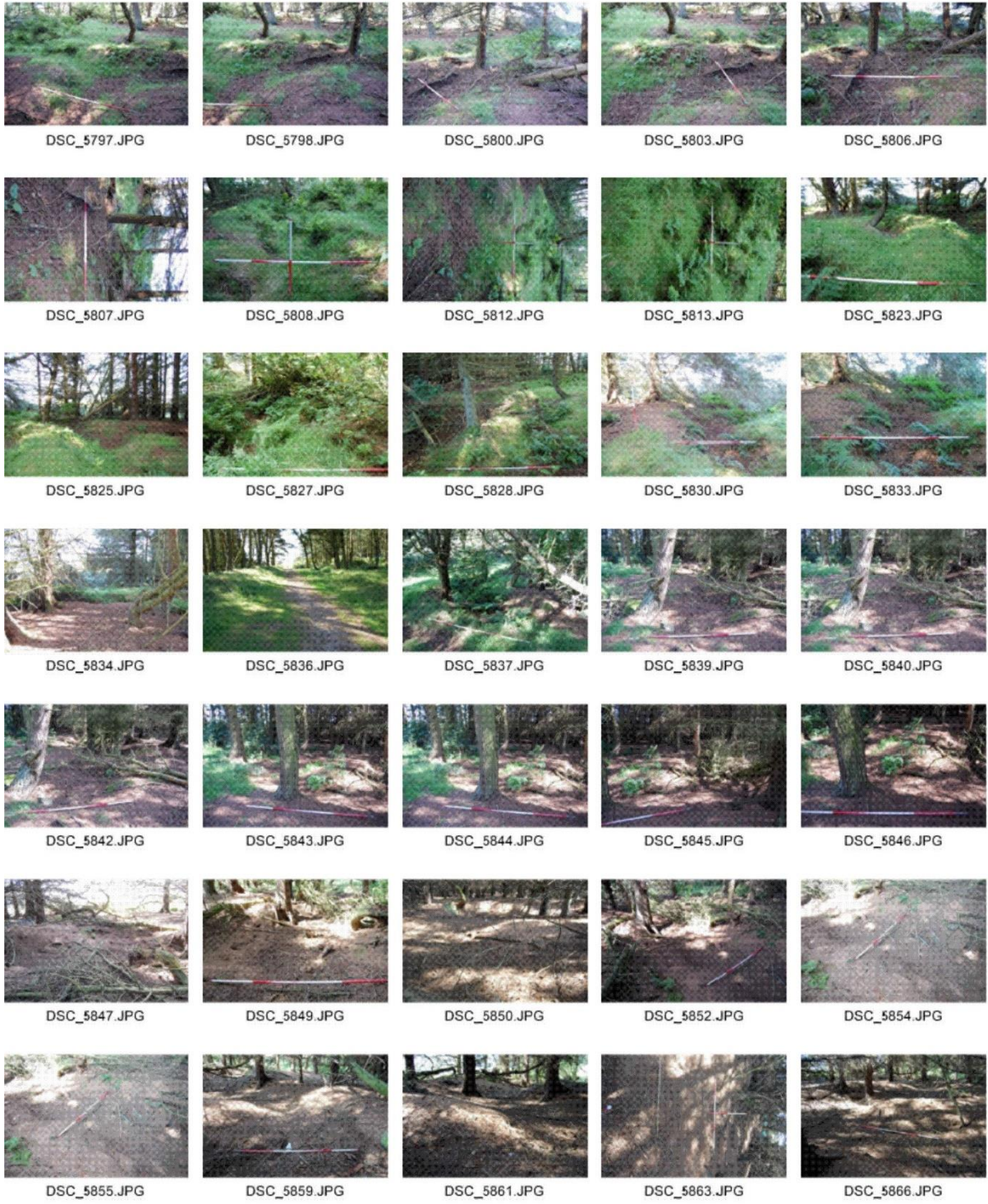


DSC_5726.JPG



DSC_5729.JPG







DSC_5869.JPG



DSC_5870.JPG



DSC_5871.JPG



DSC_5872.JPG



DSC_5875.JPG



DSC_5877.JPG



DSC_5882.JPG



DSC_5884.JPG



DSC_5885.JPG



DSC_5886.JPG



DSC_5887.JPG



DSC_5888.JPG



DSC_5889.JPG



DSC_5890.JPG



DSC_5891.JPG



DSC_5892.JPG



DSC_5893.JPG



DSC_5895.JPG



DSC_5896.JPG



DSC_5898.JPG



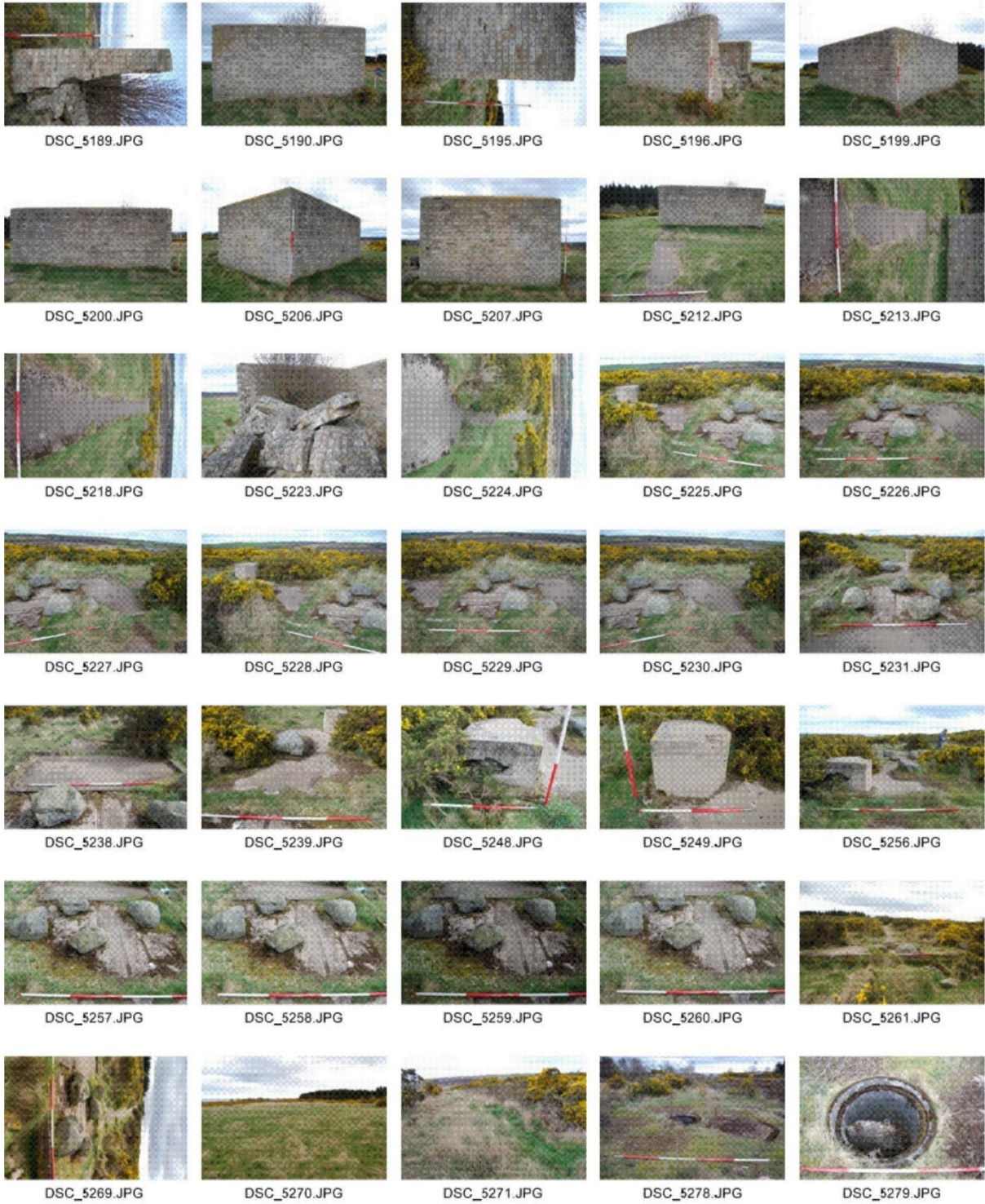
DSC_5899.JPG



DSC_5900.JPG



DSC_5901.JPG



APPENDIX 2 FEATURES RECORDED

Feature no	Description	Size
F1	Bird table fitting. Base for an aerial?	117cm high, diameter 6.5cm; base plate 66cm, circular plate 16.5cm diameter 7mm thick.
F2	Bird table fitting *	not measured
F3	concrete foundation; 'Rest Hut No 1'	7.9m long, 3.3m wide
F4	concrete path	1.25m wide
F5	pillbox	5m diameter, walls 2.09m long, walls 0.36m thick
F6	rectangular building	6.6m W-E and 5.24m N-S with walls 0.37m wide
F7	rectangular building	5m wide and 6.4m long surviving to 3.3m high
F8	octagonal foundation	4m diameter with walls 1.64m long
F9	Children's Camp	11.4m long and 8.8m wide
F10	Children's Camp	30.4m long and 4.55m wide
F11	Children's Camp	23.3m long and 5.9m wide
F12	Children's Camp	15.3m long and 6.2m wide
F13	Children's Camp	19.2m long and 7.3m wide
F14	Children's Camp	13.2m long and 6.45m
F15	Children's Camp	private house
F16	stone filled pit *	not found in 2014
F17	concrete plinth	not measured
F18	hollow way	2m wide
F19	trench underground	0.5m wide
F20	practice trenches	49 x 48m
F21	practice trenches	27 x 25m
F22	concrete steps	1.25m wide
F23	boundary stone (missing) *	not found in 2014
F24	boundary stone *	not found in 2014
F25	rig and furrow	not measured
F26	rectangular building	6.6m long and 5.2m wide; walls 0.37m wide and 2.58m high
F26A	fitting with four bolts	0.3m diameter
F27	trig point	not measured
	* not located in this survey but recorded previously	