

Skate's Nose Jetty, Aberdeen Harbour Standing Building Survey



Alison Cameron
Cameron Archaeology
17 July 2012

CONTENTS

1	INTRODUCTION	3
2	HISTORY OF THE JETTY	4
3	STANDING BUILDING SURVEY	7
4	ACKNOWLEDGEMENTS	11
5	REFERENCES	11
	APPENDIX 1 PHOTOGRAPHS	12

ILLUSTRATIONS

Illus 1	Location plan.....	3
Illus 2	Parson James Gordon's map of 1661.....	4
Illus 3	Slezer engraving of 1693 showing Bullworke	4
Illus 4	First Edition Ordnance Survey map surveyed 1867.....	5
Illus 5	Second Edition Ordnance Survey map surveyed 1899.....	5
Illus 6	Skate's Nose Jetty (left) and Pocra Quay (right) c 1915	6
Illus 7	Steam passenger and cargo vessel 'SS Highlander' aground	6
Illus 8	Plan showing Skate's Nose and Capstan Jetty.....	7
Illus 9	Plan (top) and elevation (middle) of Skate's Nose Jetty.....	8
Illus 10	Skate's Nose Jetty showing area to be demolished.....	9
Illus 11	Skate's Nose Jetty showing area (behind metal barrier) to be demolished....	9
Illus 12	Skate's Nose Jetty from west showing substantial stone foundation raft	10
Illus 13	Skate's Nose Jetty East face of the jetty showing vertical pouring scars	10
Illus 14	Skate's Nose Jetty: north end of the jetty.....	11
Illus 15	Camera points used in this survey	12

SUMMARY

A Level 2 standing building survey was carried out at Skate's Nose Jetty prior to removal of the northernmost 20m. An incised stone recorded as being built into this new jetty in 1877 but possibly inscribed 1699 could not be detected but it could be under the concrete skin of the current structure.

1 INTRODUCTION

The site lies on the south side of Aberdeen Harbour on Greyhope Road just east of its junction with St Fittick's Road (Illus 1). The site is at NJ 96008 05628 at -1 to 5m OD and in Aberdeen parish. Skate's Nose Jetty is to be truncated as part of improvements to Aberdeen Harbour; the demolition does not require planning permission or a building warrant. Aberdeen Harbour Board requested Cameron Archaeology to carry out a survey prior to demolition and the work was commissioned by Patrick Jordan, Aberdeen Harbour Board and this survey was part of the mitigation identified in the Environmental Impact Assessment (EIA) for the work

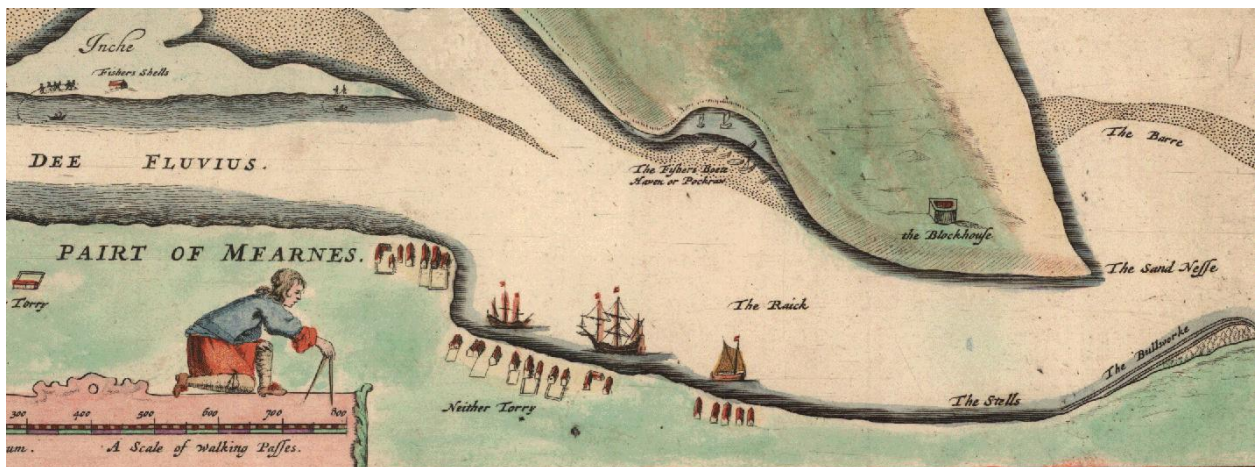


Illus 1 Location plan (Contains Ordnance Survey data © Crown copyright and database right 2012).

2 HISTORY OF THE JETTY

Skate's Nose Jetty and Beacon (RCAHMS no NJ90NE 7.26; NJ 96008 05640) is a stone and concrete jetty with flashing red and green light in a small semi-circular cast iron tower, now with modern electric unit and protective cap (Hume 1997, 8). Parson James Gordon's map of 1661 (Illus 2) shows boats moored in the current location of this jetty in an area called The Raich; the shore to the east The Stells and the Bullworke can be seen on Slezer's engraving of 1693 (Illus 3). The name comes from the original form (seen on 1867 OS map) which is a rounded protuberance at the NE end of the South Pier (Illus 4).

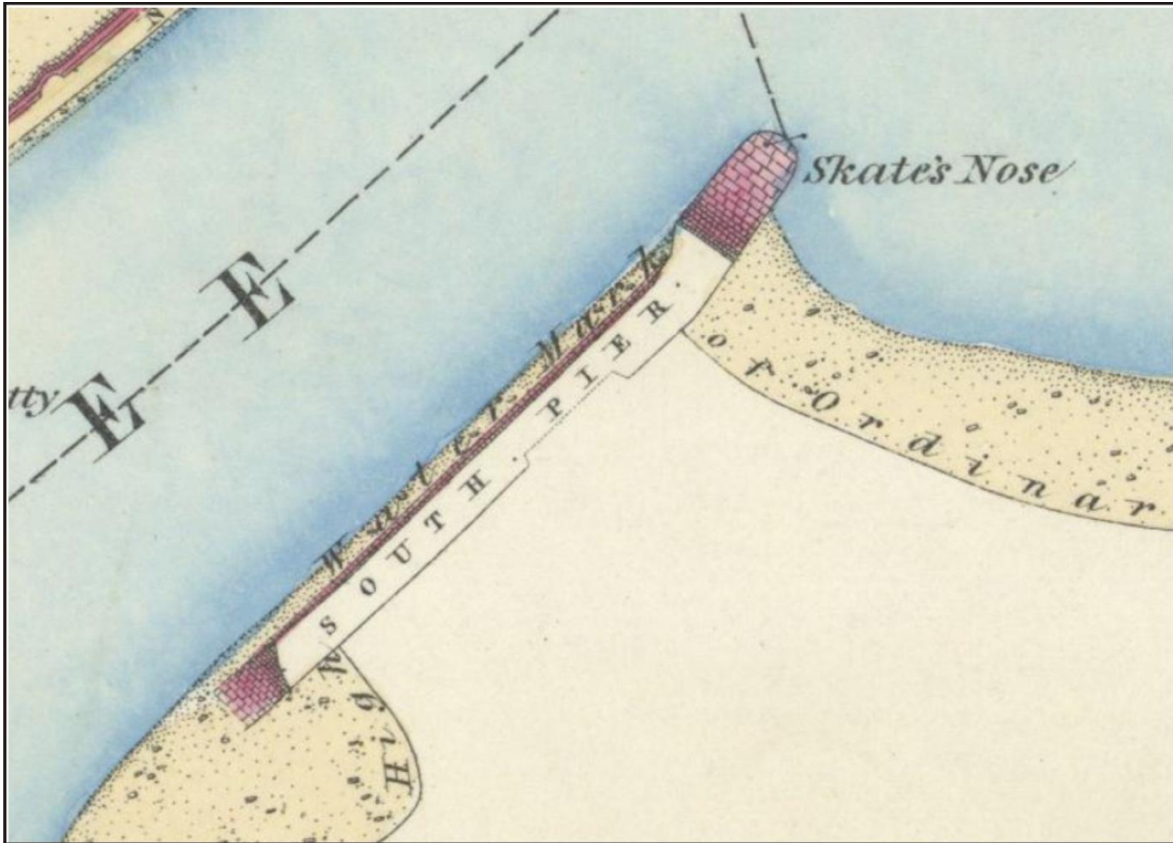
The current structure was built in 1877 (Waterman 1981, 38) and an inscribed flay grey stone is recorded as having been taken from the east end of the old South Pier (Illus 4) and embedded in the new structure. The incised initials may have been those of the Master of Import, 1699 (*ibid*).



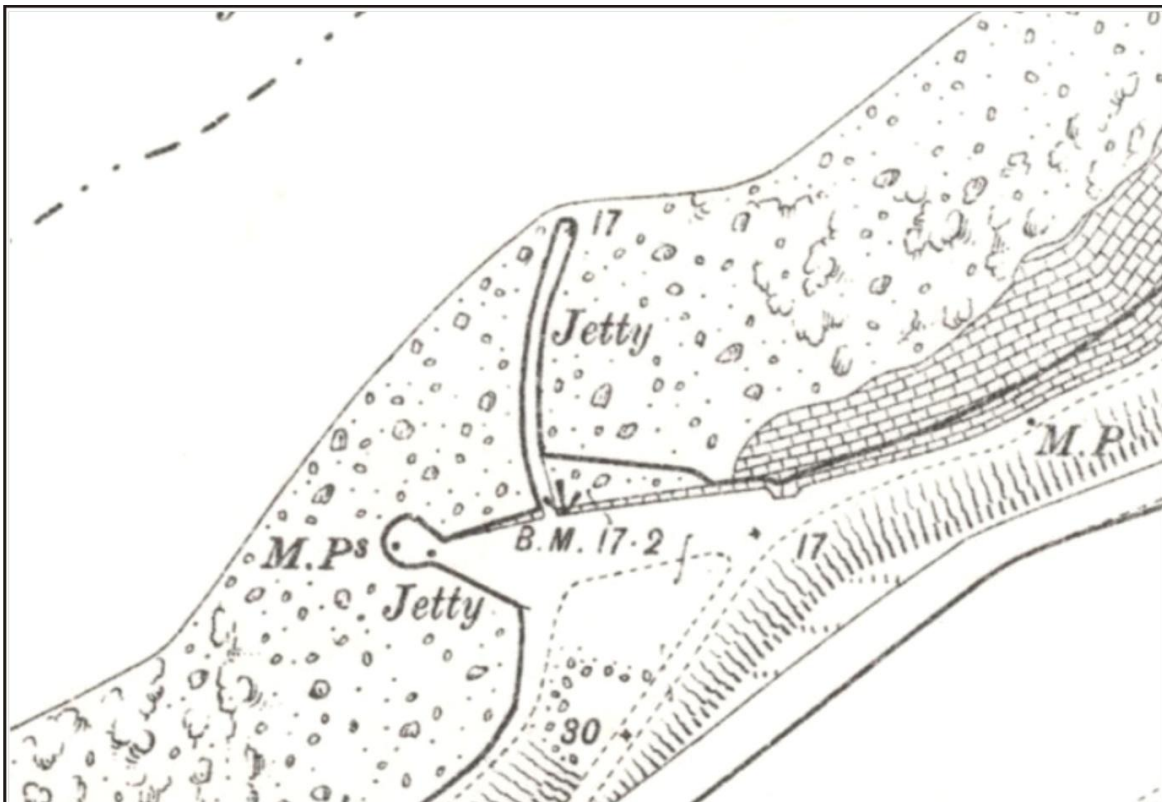
Illus 2 Parson James Gordon's map of 1661 showing boats moored in area of Skate's Nose Jetty (copyright National Library of Scotland).



Illus 3 Slezer engraving of 1693 showing Bullworke (right foreground) and blockhouse (centre) prior to Skate's Nose Jetty (copyright National Library of Scotland)



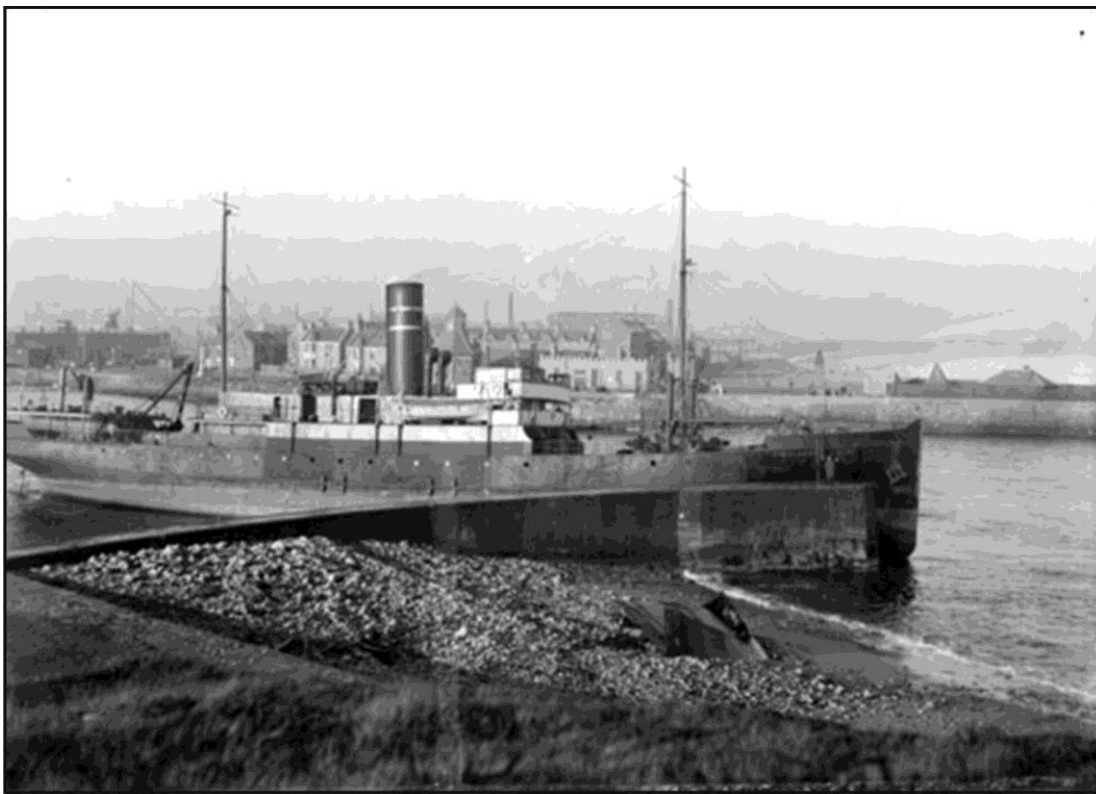
Illus 4 First Edition Ordnance Survey map surveyed 1867 (copyright National Library of Scotland)



Illus 5 Second Edition Ordnance Survey map surveyed 1899 (copyright National Library of Scotland)



Illus 6 Skate's Nose Jetty (left) and Pocra Quay (right) c 1915 (*copyright University of Aberdeen; AHB2472*)

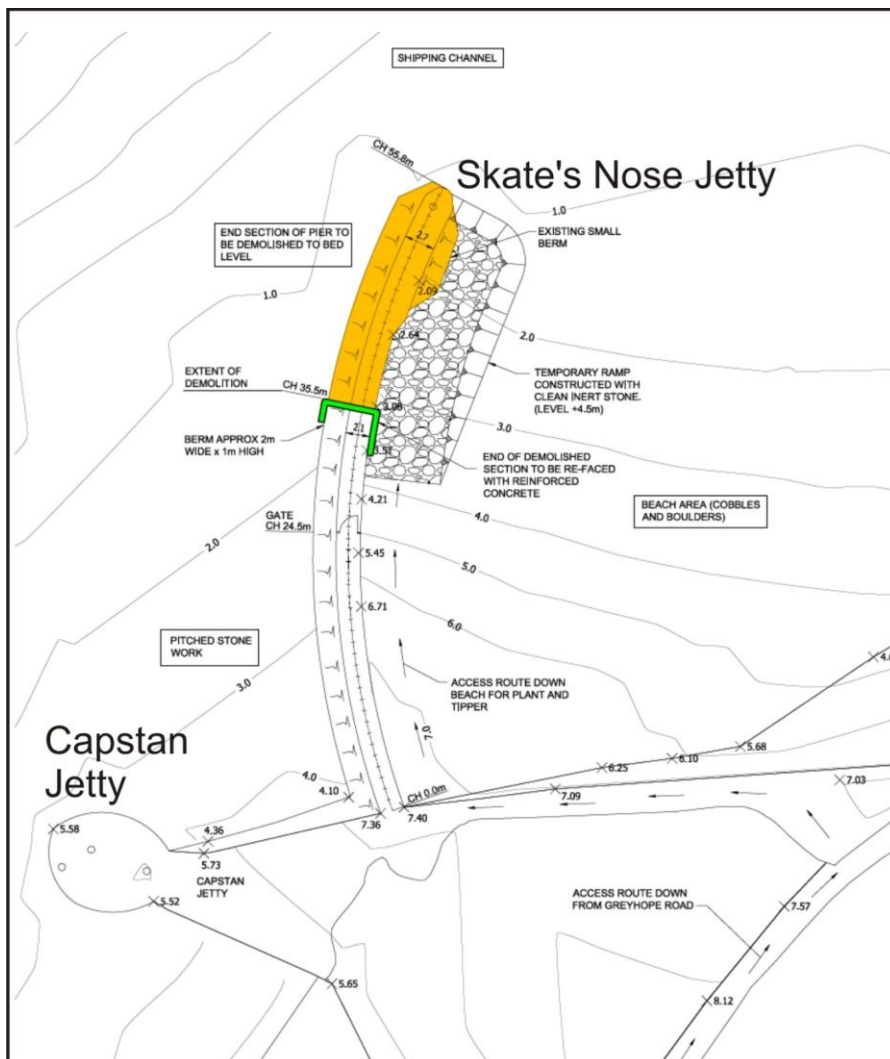


Illus 7 Steam passenger and cargo vessel 'SS Highlander' aground in the Navigation Channel by the Skates Nose Jetty c 1922 (*copyright University of Aberdeen; AHB1292*)

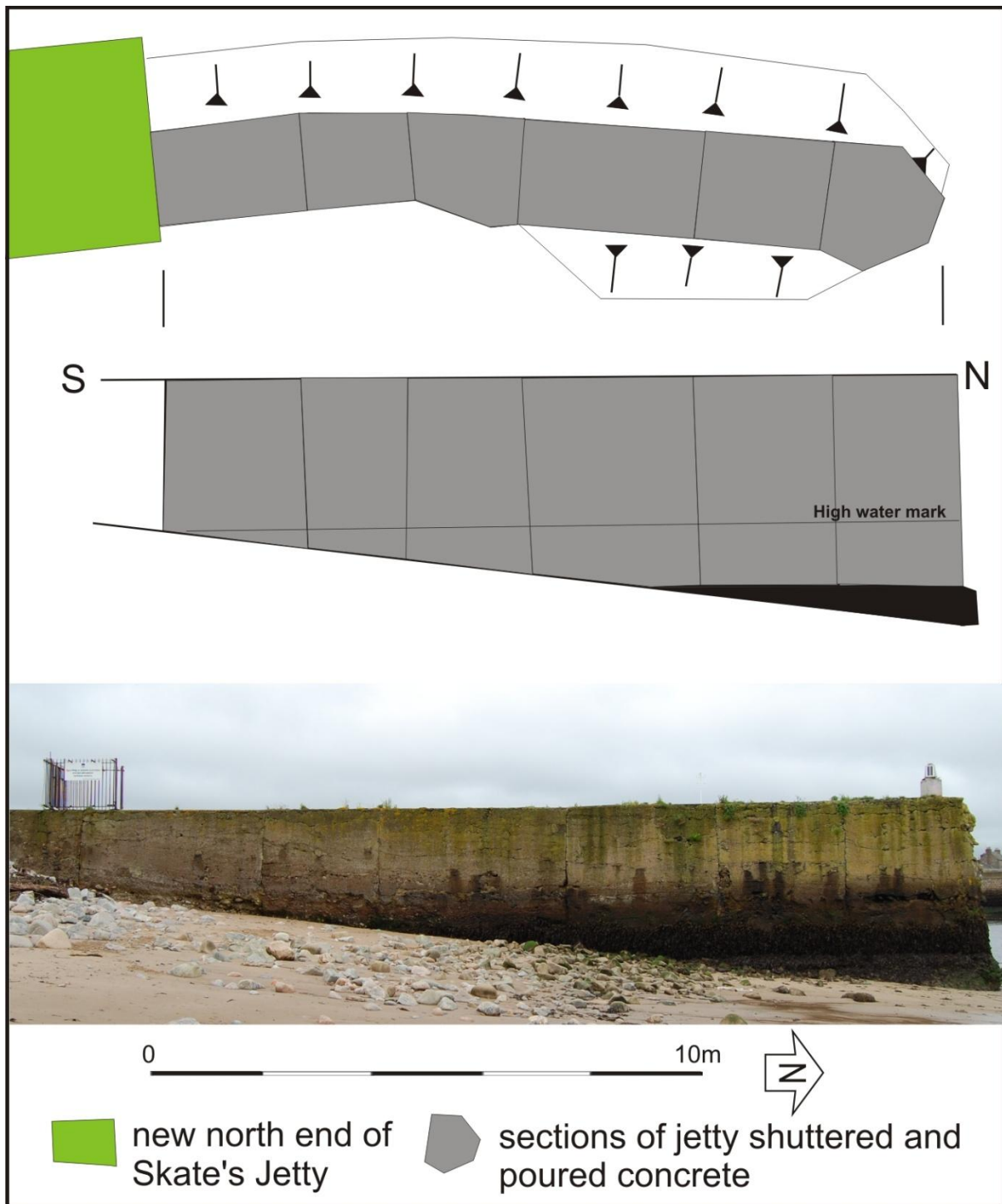
The Second Edition Ordnance Survey map surveyed 1899 (Illus 5) shows the newly-created Skate's Nose and Capstan Jetties created where the South Pier had been on the previous impression of this map. The University of Aberdeen hold a collection of photographs of the harbour including ones of Skate's Nose Jetty c 1915 and a series recording the steam passenger and cargo vessel 'SS Highlander' aground in the Navigation Channel by the Skates Nose Jetty c 1922.

3 STANDING BUILDING SURVEY

The survey took place on 13 July 2012; the tide was low but did not fully reveal the base of the jetty but photos taken previously have been used to supplement this survey. The yellow portion of Illus 8 is to be removed and a new north end created (Illus 8; in green). The section of the jetty to be removed is c29m long, 2-2.5m wide and constructed of stone with a poured concrete skin. Access to the top of the jetty was not possible for health and safety reasons but the east side clearly shows the pouring scars where each section of the concrete ends and another section starts (Illus 9, 13). These are visible on the east facing elevation; horizontal bands can also be seen in the concrete where separate batches of concrete have been poured into the wooden shuttering. A scar possibly for a ladder can be seen on the east face (Illus 13).



Illus 8 Plan showing Skate's Nose and Capstan Jetty (copyright Aberdeen Harbour Board)



Illus 9 Plan (top) and elevation (middle) of Skate's Nose Jetty

The stone foundation of the jetty is up to 1m wider than the jetty and 1m deep; it is constructed of small and medium granite fieldstones. The stonework of the jetty can be seen in places and it is similar to the foundation. The concrete skin has been poured in horizontal layers and there are many small and medium stones within the concrete. Metal fittings for mooring boats can be seen on the west (harbour facing) side of the jetty. The SS Highlander was presumably moored onto one of these when she ran aground in 1922.

An incised stone recorded as being built into this new jetty in 1877 but possibly inscribed 1699 could not be detected but it could be under the concrete skin of the current structure.



Illus 10 Skate's Nose Jetty showing area to be demolished; with Scarty's Monument on opposite bank; facing north



Illus 11 Skate's Nose Jetty showing area (behind metal barrier) to be demolished; facing north



Illus 12 Skate's Nose Jetty from west showing substantial stone foundation raft; facing north-east



Illus 13 Skate's Nose Jetty East face of the jetty showing vertical pouring scars between each shuttered section of poured concrete and horizontal bands of concrete batches; facing west



Illus 14 Skate's Nose Jetty: north end of the jetty showing layers of concrete, stone foundation and metal mooring rings; facing east.

4 ACKNOWLEDGEMENTS

I would like to thank Patrick Jordan, Aberdeen Harbour Board for initiating this project and David I Harding for his assistance with historical research.

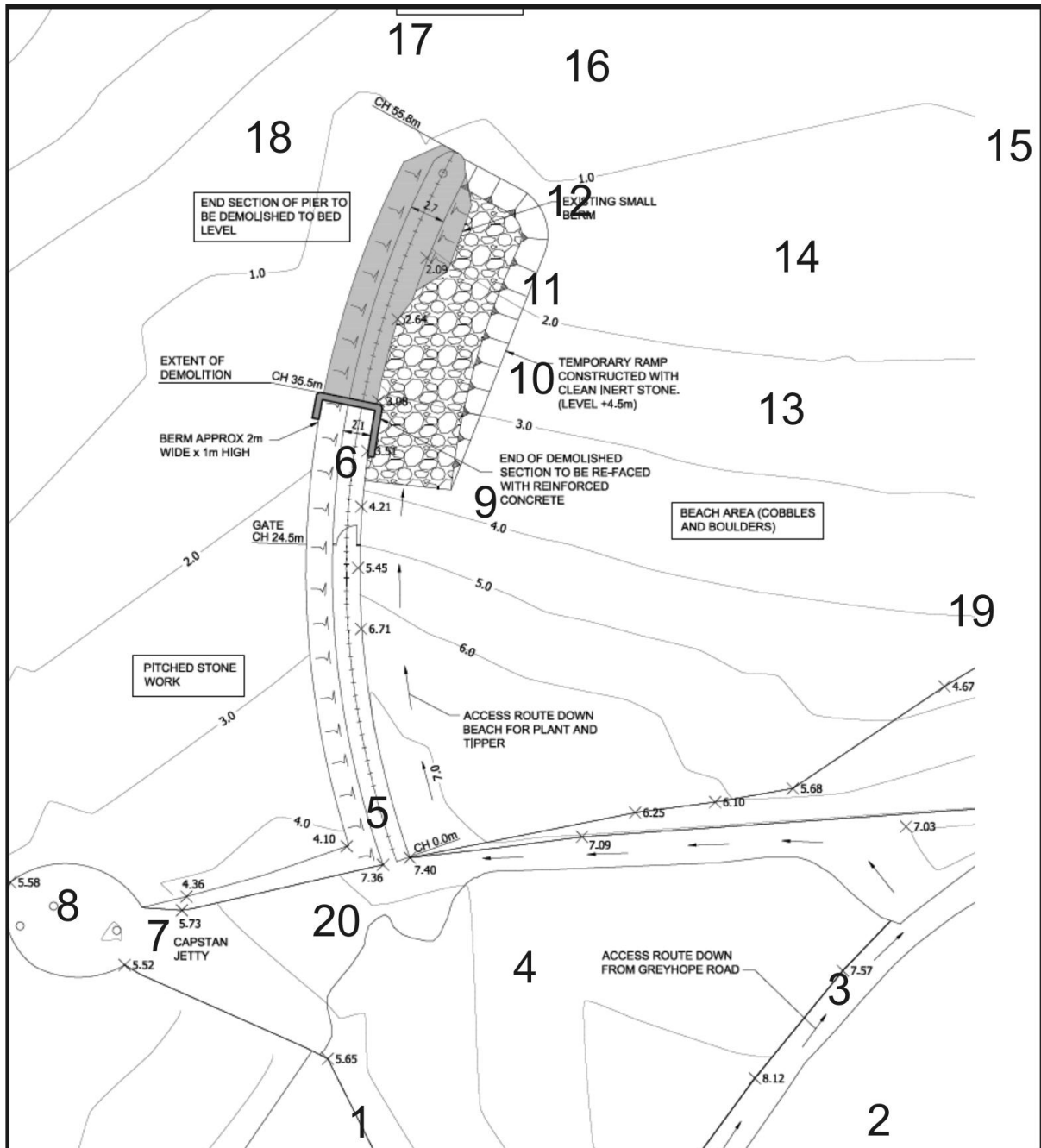
5 REFERENCES

Hume, J R 1997 Harbour Lights. Scottish Vernacular Working Group pamphlet.

Waterman, JJ 1981 Aberdeen and the Fishing Industry in the eighteen seventies. Aberdeen: Centre for Scottish Studies.

Cameron Archaeology
45 View Terrace
Aberdeen
AB25 2RS
01224 643020
07581 181057
cameronarch@btinternet.com
www.cameronarchaeology.com
Company registration no 372223 (Scotland)
VAT registration no 990 4373 00

APPENDIX 1 PHOTOGRAPHS



Illus 15 Camera points used in this survey



DSC_0007



DSC_0008



DSC_0027



DSC_0039



DSC_0040



DSC_0041



DSC_0054



DSC_0064



DSC_0080



DSC_0089



DSC_0090



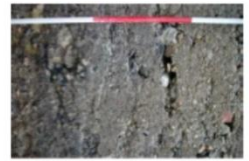
DSC_0107



DSC_0123



DSC_0127



DSC_0137



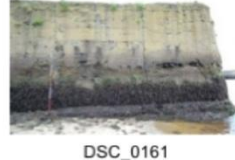
DSC_0146



DSC_0147



DSC_0154



DSC_0161



DSC_0170



DSC_0171



DSC_0178



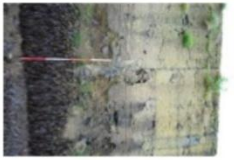
DSC_0190



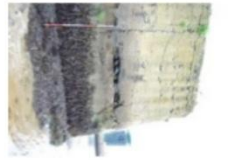
DSC_0195



DSC_0201



DSC_0210



DSC_0219



DSC_0226



DSC_0235



DSC_0249



DSC_0256



DSC_0261



DSC_0268



DSC_0420



DSC_0433



Photo no	Description	CP	Facing
DSC_0001-0007	Skate's Nose Jetty from path	4	NNW
DSC_0008-0021	Skate's Nose Jetty	3	NW
DSC_0022	Skate's Nose Jetty	3	NW
DSC_0023-0040	Skate's Nose Jetty	3	N
DSC_0041-0047	Skate's Nose Jetty	4	N
DSC_0048-0054	Skate's Nose Jetty	1	NE
DSC_0055-0063	Skate's Nose Jetty	1	NW
DSC_0064-0070	Skate's Nose Jetty	5	N
DSC_0071-0083	Skate's Nose Jetty	6	N
DSC_0084-0089	Skate's Nose Jetty	6	N
DSC_0090-0106	Skate's Nose Jetty	7	NE
DSC_0107-0120	Skate's Nose Jetty	9	W
DSC_0121-0126	Skate's Nose Jetty	10	W
DSC_0127-0133	Skate's Nose Jetty	10	W
DSC_0134-0140	Skate's Nose Jetty	10	W
DSC_0141-0146	Skate's Nose Jetty	11	W
DSC_0147-0153	Skate's Nose Jetty	11	W
DSC_0154-0160	Skate's Nose Jetty	12	W
DSC_0161-0177	Skate's Nose Jetty	12	W
DSC_0178-0190	Skate's Nose Jetty	12	N
DSC_0191-0200	Skate's Nose Jetty	12	N
DSC_0201-0213	Skate's Nose Jetty	12	S
DSC_0214-0234	Skate's Nose Jetty	14	NNW
DSC_0235-0254	Skate's Nose Jetty	5	N
DSC_0255-0272	Skate's Nose Jetty	6	N
DSC_0415-0418	Skate's Nose Jetty	4	N
DSC_0419	Skate's Nose Jetty	5	N
DSC_0420-0430	Skate's Nose Jetty	19	WNW
DSC_0431	Skate's Nose Jetty	13	NW
DSC_0432-0443	Skate's Nose Jetty	15	W
DSC_0444-0455	Skate's Nose Jetty	16	SW
DSC_0456-0470	Skate's Nose Jetty	16	SW
DSC_0471-0478	Skate's Nose Jetty	16	SW
DSC_0483-0498	Skate's Nose Jetty	17	SE
DSC_0499-0508	Skate's Nose Jetty	18	ESE
DSC_0510-0517	Skate's Nose Jetty	18	ESE
DSC_0518-0525	Skate's Nose Jetty	17	SE
DSC_0526-0532	Skate's Nose Jetty	17	SE
DSC_0533-0539	Skate's Nose Jetty	16	SW
DSC_0540-0545	Skate's Nose Jetty	16	SW
DSC_0547-0638	Skate's Nose Jetty	15	W
DSC_0639-0643	Skate's Nose Jetty	15	NW
DSC_0644-0645	Skate's Nose Jetty	13	W
DSC_0646-0650	Skate's Nose Jetty	20	N
DSC_0651-0656	Skate's Nose Jetty	7	NE
DSC_0657-0667	Skate's Nose Jetty	8	NE