

**GAS MAIN REPLACEMENT
ABERDEEN WESTERN PERIPHERAL ROUTE,
CRAIBSTONE, ABERDEEN (RE4408)**

REPORT ON ARCHAEOLOGICAL WATCHING BRIEF



**Alison Cameron
Cameron Archaeology
28 January 2015**

CONTENTS

1	INTRODUCTION	3
2	ARCHAEOLOGICAL BACKGROUND	4
3	THE WATCHING BRIEF	5
4	REFERENCES	8
5	ACKNOWLEDGEMENTS	8
	APPENDIX 1 PHOTOGRAPHS	9
	APPENDIX 2 MAPS AND AERIAL PHOTOGRAPHS	23
	APPENDIX 3 FEATURES	24

ILLUSTRATIONS

Cover Top Structure 1; facing N Bottom watching brief for compound; facing N

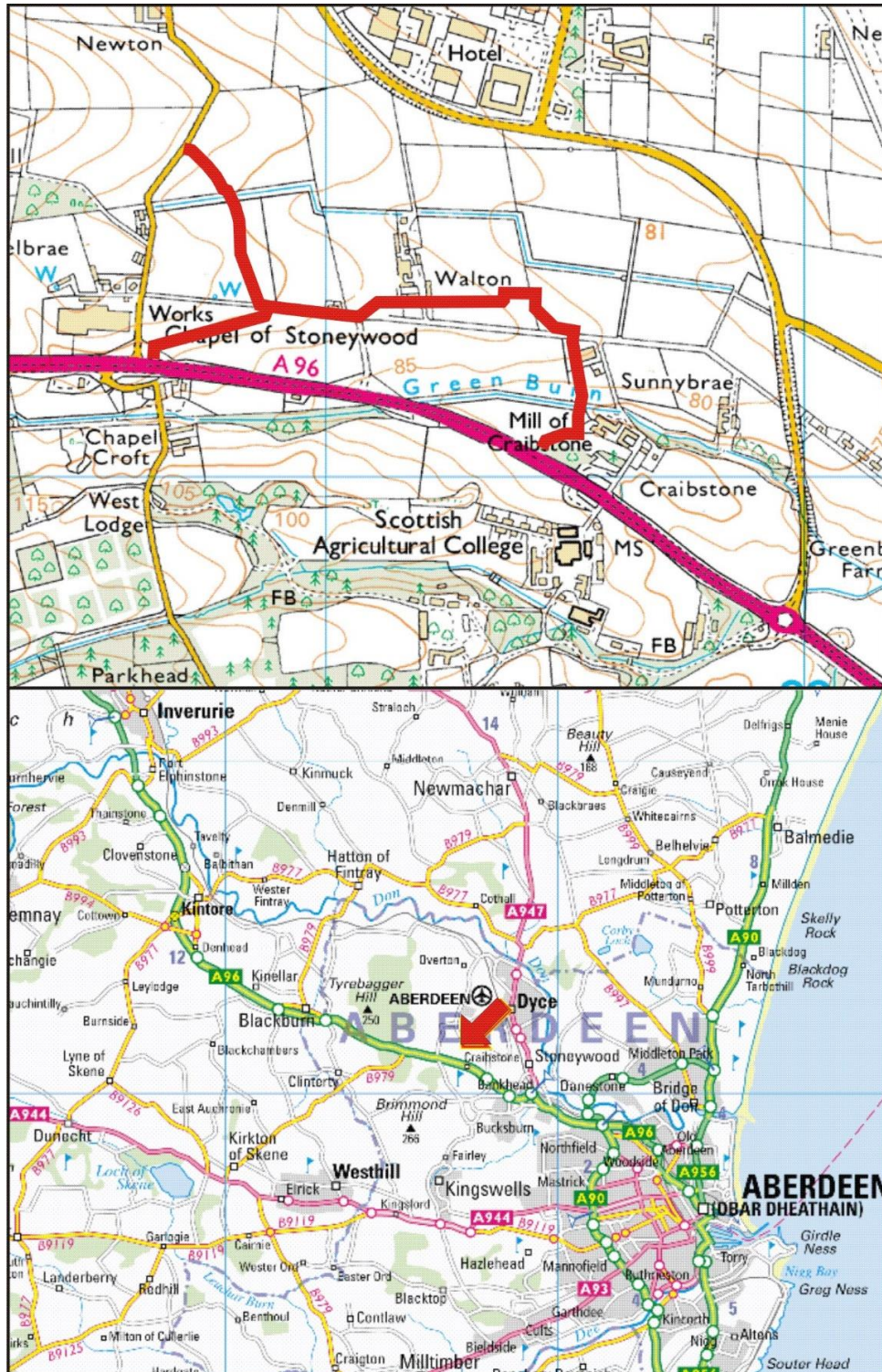
Illus 1	Location plan	3
Illus 2	Proposed gas main (in red).....	4
Illus 3	Plan showing watching brief areas and main features.....	6
Illus 4	Structure 1	6
Illus 5	Rig and furrow recorded during the watching brief	7
Illus 6	Foot from late medieval vessel, SF1	7

SUMMARY

A watching brief took place between 5 January and 24 February 2015; all soil stripping was observed. One post-hole structure (Structure 1) was identified; it was cleaned and recorded and left *in situ*. Rig and furrow was recorded over much of the east of the site. The soil strip is now complete and it has been agreed with Aberdeenshire Archaeology that no further archaeological work is required during the current development.

1 INTRODUCTION

- 1.1 The site is located on the north side of the A96 between Chapel Works, Stoneywood and the Mill of Craibstone (Illus 1). It is in the parish of Newhills centred on NJ 87062 11334 and at 75-110m OD.
- 1.2 Rayden Engineering are carrying out replacement gas main works prior to the construction of the Aberdeen Western Peripheral Route (Illus 2) and an archaeological watching brief was required during the soil strip for the works. The work was commissioned by Stephen Nazer, Rayden for client Scotland Gas Networks.



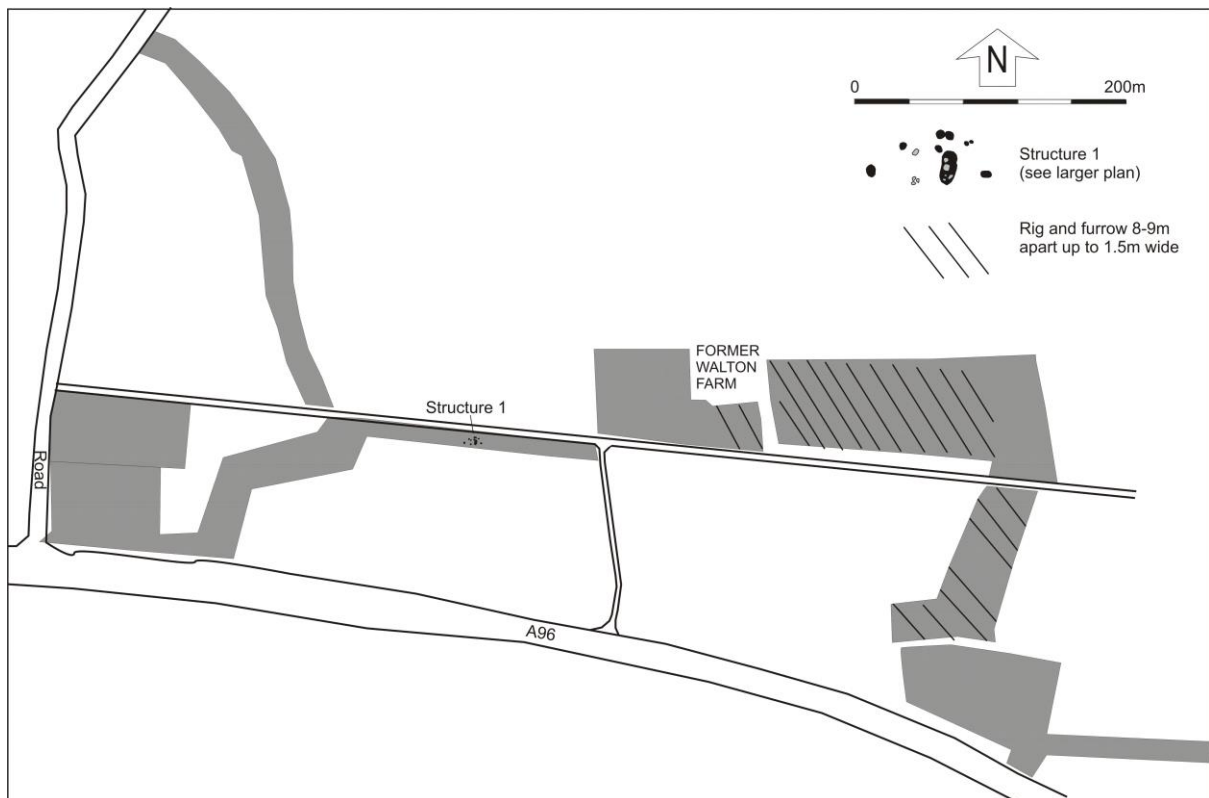
Illus 1 Location plan (Contains Ordnance Survey data © Crown copyright and database right 2015)

with maximum dimensions of 2.44 by 0.94m, bounded by dry stone walling, enclosing the site of a spring. The N part of the enclosing wall (or well-head) was built first; and the S part, which included some mortar-bonded stones, was added possibly as late as the 19th century, when the feature may have functioned as a trough or bath. The water table was reached at a depth of 0.5m. The monument is of national importance because of its potential to contribute to an understanding of medieval ecclesiastical architecture, organisation and burial practices. The monument is recorded by RCAHMS as NJ81SE 10. The well is recorded by RCAHMS as NJ81SE 8 (Historic Scotland Scheduling online). This building will not be affected by the proposed works as the chapel is screened by trees and the A96 from the proposed works.

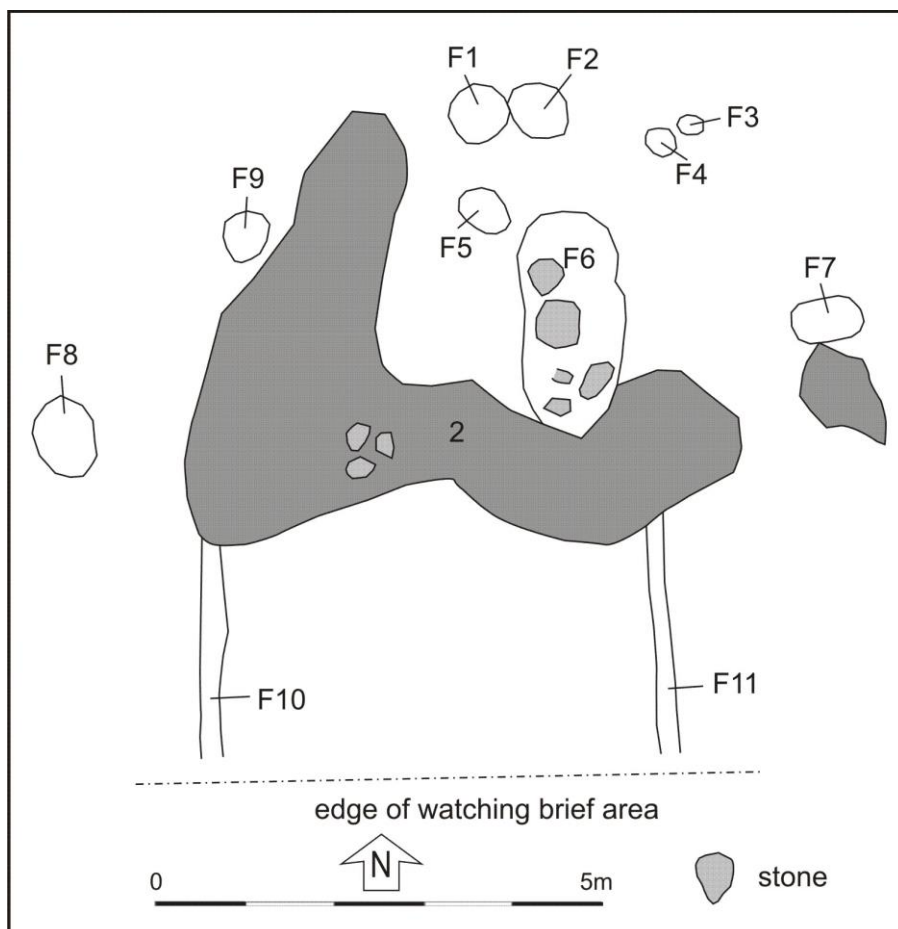
- 2.2 There are two Listed Buildings within 1km of the proposed development. Chapel of Stoneywood graveyard is Listed Category C (see 2.1 above) and Walton Farmhouse is Listed Category C; Walton Farm is a late 18th-century experimental farm (MacRobert experimental farm). This building will not be directly affected by the proposed works.
- 2.3 Headland Archaeology carried out extensive geophysical survey, trial trenching and excavation along the line of the Western Peripheral Route (NJ81SE 196). Archaeological deposits from multiple periods were encountered (Headland Archaeology forthcoming a).
- 2.4 Headland Archaeology also carried out excavations at the Aberdeen Park and Ride, where extensive and well-preserved prehistoric remains were uncovered (Headland Archaeology forthcoming b).
- 2.5 The proposed site runs through several agricultural fields which have been in agricultural use since at least the mid 19th century (see Appendix 2). No other archaeological sites are known within this land parcel.
- 2.6 Aerial photographs reveal no definite archaeological sites within the area of the proposed gas main (Appendix 2).

3 THE WATCHING BRIEF

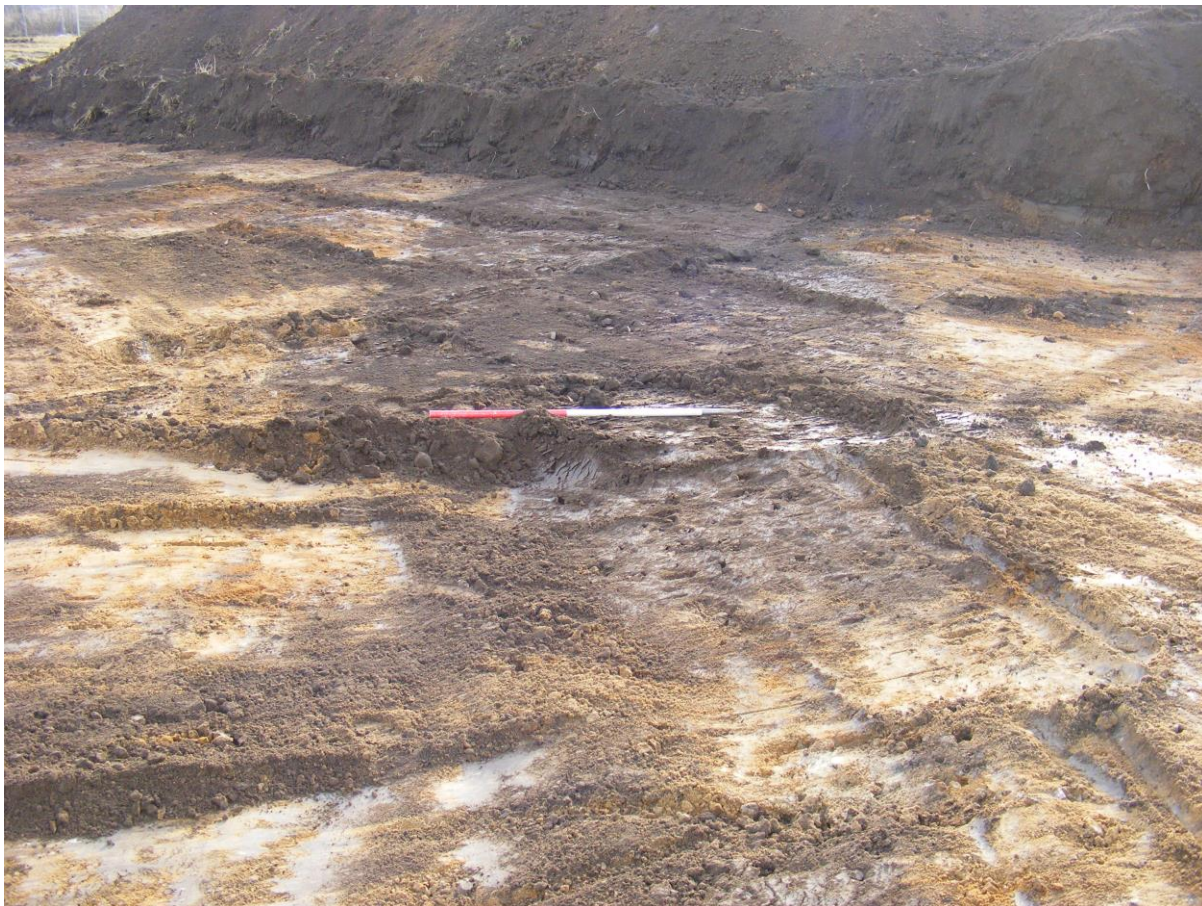
- 3.1 A watching brief took place between 5 January and 24 February 2015; all soil stripping was observed (Illus 3).
- 3.2 One post-hole structure was identified (Illus 4). It was poorly preserved but consisted of eight post-holes with an off-centre pit filled with large stones (F6). The south of the structure appeared to have been ploughed out and two plough marks (F10 and F11) were recorded. The post-holes were filled with burnt loam and charcoal (see Appendix 3). No finds were recovered whilst cleaning these remains. The feature is to be covered and retained *in situ* during these gas mains works.
- 3.3 Rig and furrow 1-1.2m wide and 8-9m apart running NW-SE (Illus 5) was recorded over much of the east of the site (Illus 3). One foot from a late medieval vessel (SF1; Illus 6) was found whilst cleaning a furrow east of Walton Farm.



Illus 3 Plan showing watching brief areas and main features (from copyright Capita)



Illus 4 Structure 1



Illus 5 Rig and furrow recorded during the watching brief



Illus 6 Foot from late medieval vessel, SF1 (left interior, middle bottom of foot, right side view)

4 REFERENCES

Headland Archaeology. Forthcoming a. Archaeological work along the Aberdeen western Peripheral Route 2012-14.

Headland Archaeology. Forthcoming b. Excavations at Aberdeen Park and Ride, Bucksburn.

Historic Scotland scheduling online http://data.historic-scotland.gov.uk/pls/htmlldb/f?p=2300:35:4308490514467060::::P35_SELECTED_MONUMENT:10446 accessed 12.12.2014.

5 ACKNOWLEDGEMENTS

Thanks to Stephen Nazer, Rayden Engineering for commissioning this project and David Wood and all staff of Rayden for their assistance on site; thanks to Bruce Mann, Aberdeenshire Archaeology for his advice during the works.

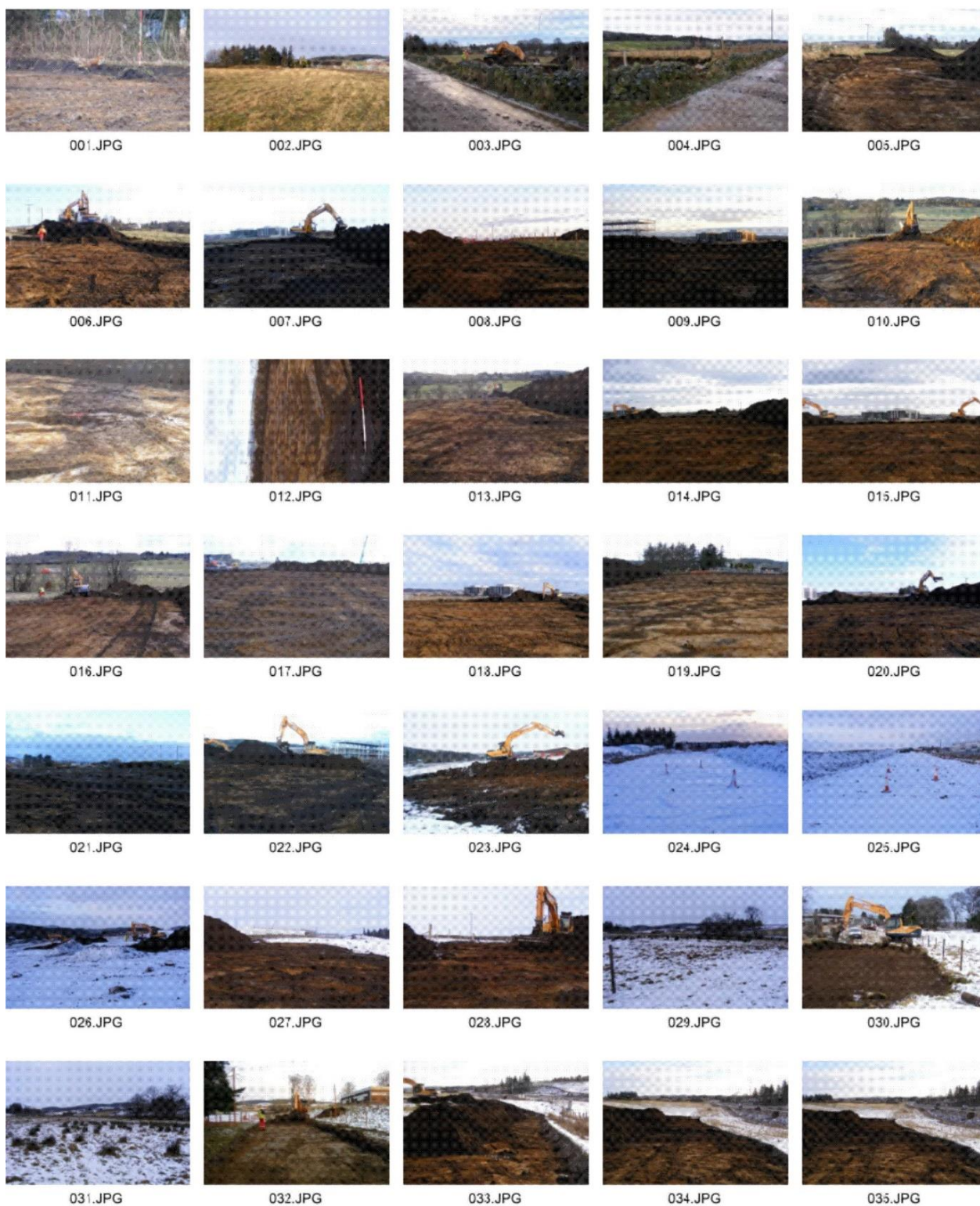
Cameron Archaeology
45 View Terrace
Aberdeen
AB25 2RS
01224 643020
07581 181057
cameronarch@btinternet.com
www.cameronarchaeology.com
Company registration no 372223 (Scotland)
VAT registration no 990 4373 00

APPENDIX 1 PHOTOGRAPHS

- 1 – View of wildlife near Walton Farm.
- 2 – View of ground E of Walton Farm facing W.
- 3 – View of dyke by Walton Road facing SE.
- 4 – View of dyke by Walton Road facing SW.
- 5 – View of ground south of dyke facing E.
- 6 – View of ground south of dyke facing E.
- 7 – View of ground E of Walton Farm facing E.
- 8 – View of ground south of dyke facing N.
- 9 – View of ground E of Walton Farm facing NE.
- 10 – View of ground south of dyke facing S.
- 11 – View of medieval furrow – scale 1m.
- 12 – View of medieval furrow – scale 1m.
- 13 – View of ground south of dyke facing S.
- 14 – View of ground E of Walton Farm facing E.
- 15 – View of ground E of Walton Farm facing E.
- 16 – View of ground south of dyke facing SE.
- 17 – View of ground E of Walton Farm facing NW.
- 18 – View of ground E of Walton Farm facing NE.
- 19 – View of ground E of Walton Farm facing W.
- 20 – View of ground E of Walton Farm facing E.
- 21 – View of ground E of Walton Farm facing N.
- 22 – View of ground E of Walton Farm facing N.
- 23 – View of ground W side of development facing W.
- 24 – View of site of hut circle facing E.
- 25 – View of site of hut circle facing W.
- 26 – View of site facing SW.
- 27 – View of ground W side of development facing NE.
- 28 – View of ground W side of development facing N.
- 29 – View of ground W of SAC facing NW.
- 30 – View of access road by SAC facing E.
- 31 – View of ground W of SAC facing W.
- 32 – View of access road by SAC facing W.
- 33 – View of ground W side of development facing SE.
- 34 – View of ground W side of development facing E.
- 35 – View of ground W side of development facing E.
- 36 – View of ground W side of development facing W.
- 37 – View of ground W side of development facing N.
- 38 – View of ground W side of development facing E.
- 39 – View of ground W side of development facing N.
- 40 – View of ground W side of development facing N.
- 41 – View of ground W side of development facing NE.
- 42 – View of ground W side of development facing W.
- 43 – View of access road by SAC facing NE.
- 44 – View of ground W side of development facing N.
- 45 – View of field drain ground W side of development facing NE.
- 46 – View of dyke by Walton Road facing NE.
- 47 – View of dyke by Walton Road facing N.
- 48 – View of dyke by Walton Road facing NE.
- 49 – View of ground N of Walton Farm facing N.
- 50 – View of ground N of Walton Farm facing N.
- 51 – View of ground N of Walton Farm facing N.
- 52 – View of ground W of SAC facing SW.
- 53 – View of ground W of SAC facing N.
- 54 – View of dyke E of Walton Farm facing NW.

- 55 – View of dyke E of Walton Farm facing N.
- 56 – View of dyke E of Walton Farm facing N.
- 57 – View of ground W of SAC facing W.
- 58 – View of ground N of Walton Farm facing N.
- 59 – View of ground N of Walton Farm facing N.
- 60 – View of ground N of Walton Farm facing N.
- 61 – View of ground N of Walton Farm facing NW.
- 62 – View of ground N of Walton Farm facing N.
- 63 – View of ground N of Walton Farm facing W.
- 64 – View of field drain N end of site facing NW.
- 65 – View of ground W of SAC facing W.
- 66 – View of ground W of SAC facing NW.
- 67 – View of ground W of SAC facing NW.
- 68 – View of ground W of SAC facing E.
- 69 – View of ground N of Walton Farm facing N.
- 70 – View of ground N of Walton Farm facing N.
- 71 – View of ground N of Walton Farm facing SE.
- 72 – View of ground N of Walton Farm facing N.
- 73 – View of ground N of Walton Farm facing N.
- 74 – View of ground N of Walton Farm facing N.
- 75 – View of ground N of Walton Farm facing N.
- 76 – View of ground N of Walton Farm facing SE.

Photo no	Description	Facing
DSC_0125-281	Soil strip compound at west of site	
DSC_0282-367	Soil strip west of Walton Farm	
DSC_0368-399 (14)	Soil strip south of Walton Farm	
DSC_0399 (15)-882	Structure 1	
DSC_0853-54	F10	
DSC_0855-57	F11	N
DSC_0859	F1	W
DSC_0861	F2	W
DSC_0863-64	F3 and F4	W
DSC_0866-67	F5	W
DSC_0869	F7	W
DSC_0871	F8	W
DSC_0873	F9	W
DSC_0920-931	SF1 foot of late medieval tripod vessel	
DSCF7177-7414	Watching brief photos	





036.JPG



037.JPG



038.JPG



039.JPG



040.JPG



041.JPG



042.JPG



043.JPG



044.JPG



045.JPG



046.JPG



047.JPG



048.JPG



049.JPG



050.JPG



051.JPG



052.JPG



053.JPG



054.JPG



055.JPG



056.JPG



057.JPG



058.JPG



059.JPG



060.JPG



061.JPG



062.JPG



063.JPG



064.JPG



065.JPG



066.JPG



067.JPG



068.JPG



069.JPG



070.JPG



071.JPG



072.JPG



073.JPG



074.JPG



075.JPG



076.JPG



DSC_0125.JPG



DSC_0126.JPG



DSC_0127.JPG



DSC_0128.JPG



DSC_0129.JPG



DSC_0130.JPG



DSC_0131.JPG



DSC_0132.JPG



DSC_0133.JPG



DSC_0134.JPG



DSC_0135.JPG



DSC_0136.JPG



DSC_0137.JPG



DSC_0138.JPG



DSC_0139.JPG



DSC_0140.JPG



DSC_0141.JPG



DSC_0142.JPG



DSC_0143.JPG



DSC_0144.JPG



DSC_0145.JPG



DSC_0146.JPG



DSC_0147.JPG



DSC_0148.JPG



DSC_0149.JPG



DSC_0150.JPG



DSC_0151.JPG



DSC_0152.JPG



DSC_0153.JPG



DSC_0154.JPG



DSC_0155.JPG



DSC_0156.JPG



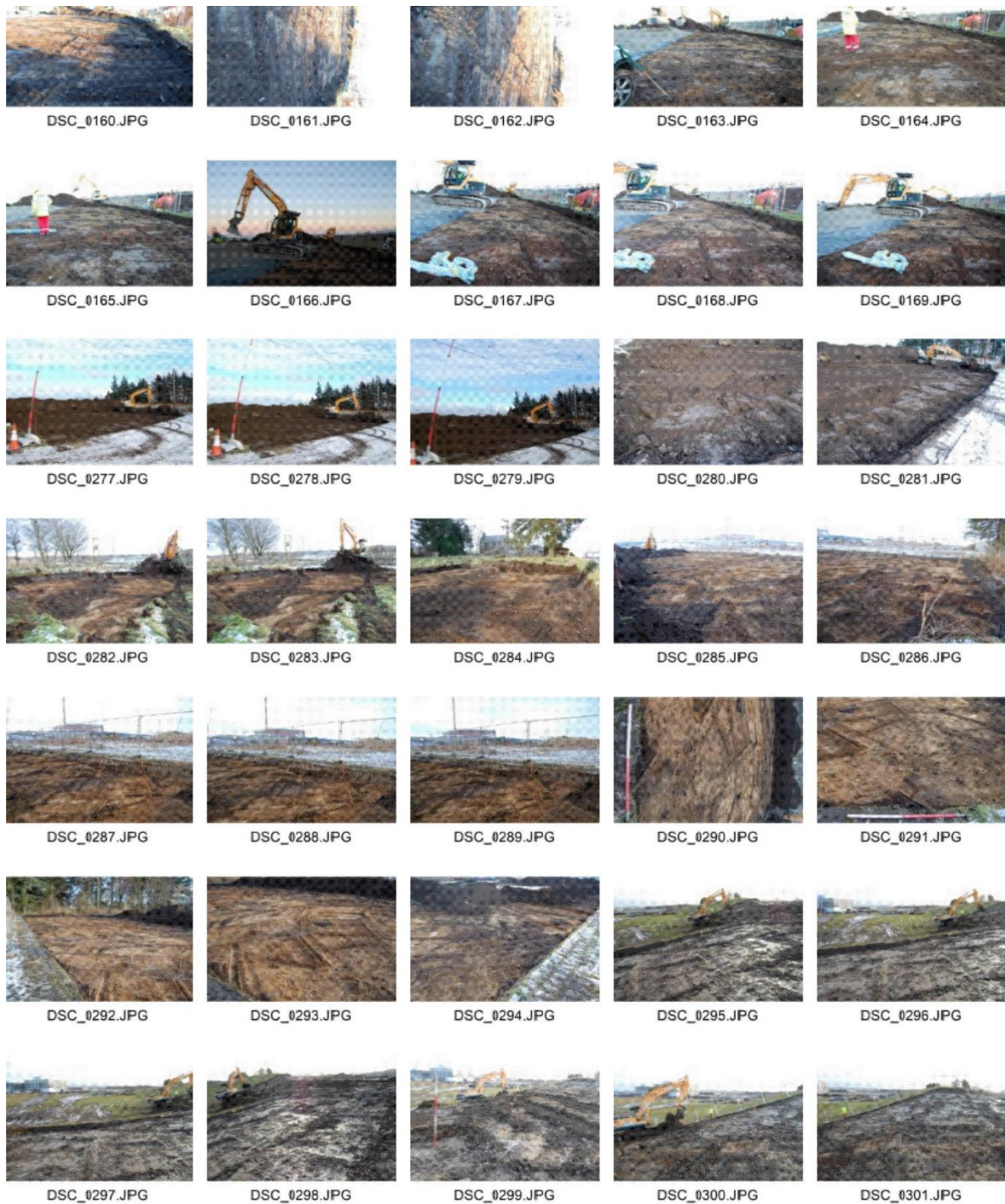
DSC_0157.JPG



DSC_0158.JPG



DSC_0159.JPG





DSC_0302.JPG



DSC_0303.JPG



DSC_0304.JPG



DSC_0305.JPG



DSC_0344.JPG



DSC_0345.JPG



DSC_0346.JPG



DSC_0347.JPG



DSC_0348.JPG



DSC_0349.JPG



DSC_0350.JPG



DSC_0351.JPG



DSC_0352.JPG



DSC_0353.JPG



DSC_0354.JPG



DSC_0355.JPG



DSC_0356.JPG



DSC_0357.JPG



DSC_0358.JPG



DSC_0359.JPG



DSC_0360.JPG



DSC_0361.JPG



DSC_0362.JPG



DSC_0363.JPG



DSC_0364.JPG



DSC_0365.JPG



DSC_0366.JPG



DSC_0367.JPG



DSC_0368.JPG



DSC_0369.JPG



DSC_0389.JPG



DSC_0390.JPG



DSC_0391.JPG



DSC_0392.JPG



DSC_0393.JPG



DSC_0394.JPG



DSC_0395.JPG



DSC_0396.JPG



DSC_0397.JPG



DSC_0399 (2).JPG



DSC_0399 (3).JPG



DSC_0399 (4).JPG



DSC_0399 (5).JPG



DSC_0399 (6).JPG



DSC_0399 (7).JPG



DSC_0399 (8).JPG



DSC_0399 (9).JPG



DSC_0399 (10).JPG



DSC_0399 (11).JPG



DSC_0399 (12).JPG



DSC_0399 (13).JPG



DSC_0399 (14).JPG



DSC_0399 (15).JPG



DSC_0399 (16).JPG



DSC_0399 (17).JPG



DSC_0399 (18).JPG



DSCF7177.JPG



DSCF7178.JPG



DSCF7179.JPG



DSCF7180.JPG



DSCF7181.JPG



DSCF7182.JPG



DSCF7183.JPG



DSCF7184.JPG



DSCF7185.JPG



DSCF7186.JPG



DSCF7187.JPG



DSCF7188.JPG



DSCF7189.JPG



DSCF7190.JPG



DSCF7191.JPG



DSCF7192.JPG



DSCF7193.JPG



DSCF7194.JPG



DSCF7195.JPG



DSCF7196.JPG



DSCF7197.JPG



DSCF7198.JPG



DSCF7199.JPG



DSCF7200.JPG



DSCF7201.JPG



DSCF7202.JPG



DSCF7203.JPG



DSCF7204.JPG



DSCF7205.JPG



DSCF7206.JPG



DSCF7207.JPG



DSCF7208.JPG



DSCF7209.JPG



DSCF7210.JPG



DSCF7211.JPG



DSCF7212.JPG



DSCF7213.JPG



DSCF7214.JPG



DSCF7215.JPG



DSCF7216.JPG



DSCF7217.JPG



DSCF7218.JPG



DSCF7219.JPG



DSCF7220.JPG



DSCF7221.JPG



DSCF7222.JPG



DSCF7223.JPG



DSCF7224.JPG



DSCF7225.JPG



DSCF7226.JPG



DSCF7227.JPG



DSCF7228.JPG



DSCF7229.JPG



DSCF7230.JPG



DSCF7231.JPG



DSCF7232.JPG



DSCF7233.JPG



DSCF7234.JPG



DSCF7235.JPG



DSCF7236.JPG



DSCF7237.JPG



DSCF7238.JPG



DSCF7239.JPG



DSCF7240.JPG



DSCF7241.JPG



DSCF7242.JPG



DSCF7243.JPG



DSCF7244.JPG



DSCF7245.JPG



DSCF7246.JPG



DSCF7247.JPG



DSCF7248.JPG



DSCF7249.JPG



DSCF7250.JPG



DSCF7251.JPG



DSCF7252.JPG



DSCF7253.JPG



DSCF7254.JPG



DSCF7255.JPG



DSCF7256.JPG



DSCF7257.JPG



DSCF7258.JPG



DSCF7259.JPG



DSCF7260.JPG



DSCF7261.JPG



DSCF7262.JPG



DSCF7263.JPG



DSCF7264.JPG



DSCF7265.JPG



DSCF7266.JPG



DSCF7267.JPG



DSCF7268.JPG



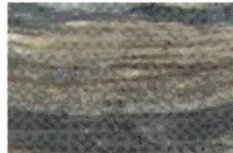
DSCF7269.JPG



DSCF7270.JPG



DSCF7271.JPG



DSCF7272.JPG



DSCF7273.JPG



DSCF7274.JPG



DSCF7275.JPG



DSCF7276.JPG



DSCF7277.JPG



DSCF7278.JPG



DSCF7279.JPG



DSCF7280.JPG



DSCF7281.JPG



DSCF7282.JPG



DSCF7283.JPG



DSCF7284.JPG



DSCF7285.JPG



DSCF7286.JPG



DSCF7287.JPG



DSCF7288.JPG



DSCF7289.JPG



DSCF7290.JPG



DSCF7291.JPG



DSCF7292.JPG



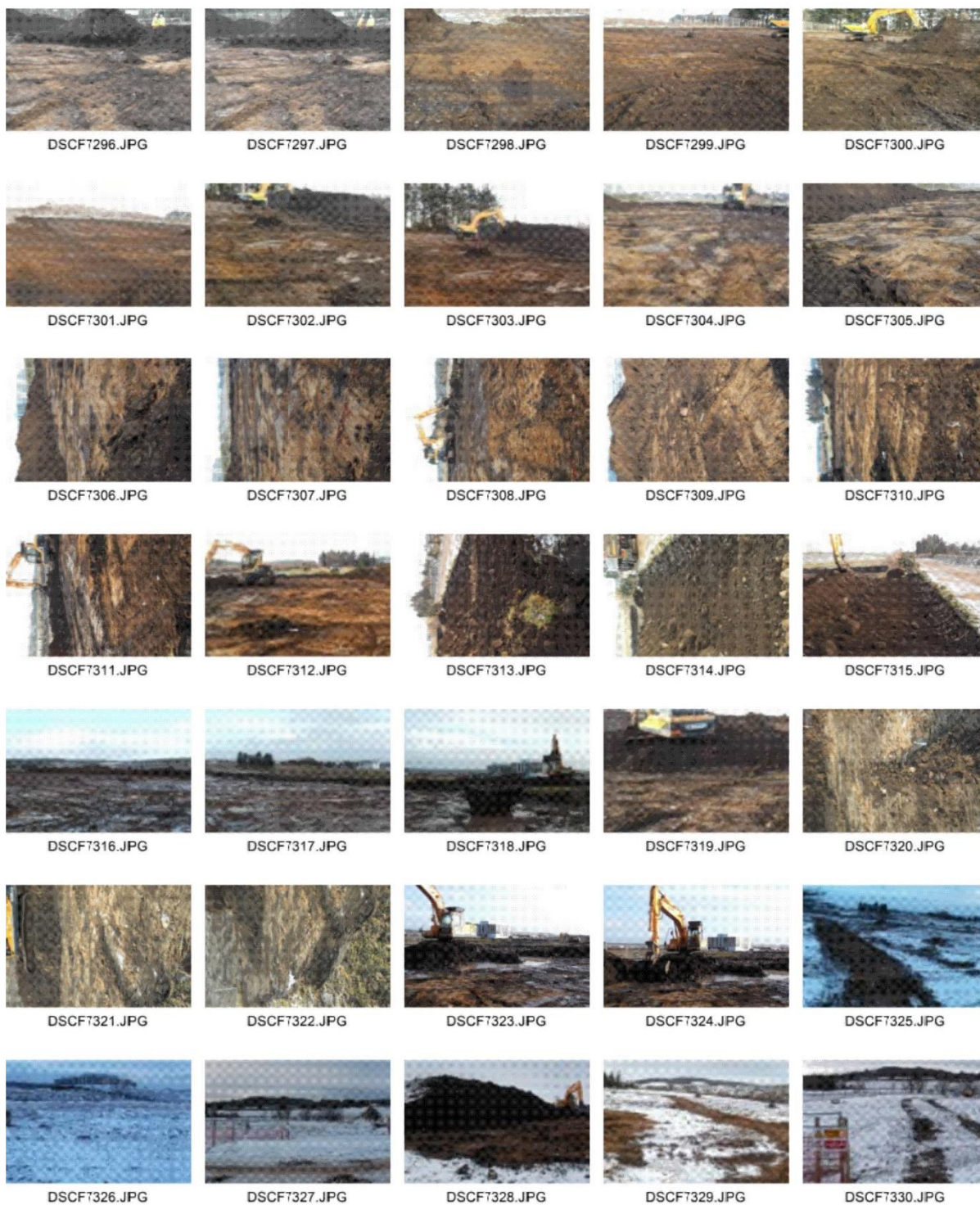
DSCF7293.JPG



DSCF7294.JPG



DSCF7295.JPG





DSCF7331.JPG



DSCF7332.JPG



DSCF7333.JPG



DSCF7334.JPG



DSCF7335.JPG



DSCF7336.JPG



DSCF7337.JPG



DSCF7338.JPG



DSCF7339.JPG



DSCF7340.JPG



DSCF7341.JPG



DSCF7342.JPG



DSCF7343.JPG



DSCF7344.JPG



DSCF7345.JPG



DSCF7346.JPG



DSCF7347.JPG



DSCF7348.JPG



DSCF7349.JPG



DSCF7350.JPG



DSCF7351.JPG



DSCF7352.JPG



DSCF7353.JPG



DSCF7354.JPG



DSCF7355.JPG



DSCF7356.JPG



DSCF7357.JPG



DSCF7358.JPG



DSCF7359.JPG



DSCF7360.JPG



DSCF7361.JPG



DSCF7362.JPG



DSCF7363.JPG



DSCF7364.JPG



DSCF7365.JPG



DSCF7366.JPG



DSCF7367.JPG



DSCF7368.JPG



DSCF7369.JPG



DSCF7370.JPG



DSCF7371.JPG



DSCF7372.JPG



DSCF7373.JPG



DSCF7374.JPG



DSCF7375.JPG



DSCF7376.JPG



DSCF7377.JPG



DSCF7378.JPG



DSCF7379.JPG



DSCF7380.JPG



DSCF7381.JPG



DSCF7382.JPG



DSCF7383.JPG



DSCF7384.JPG



DSCF7385.JPG



DSCF7386.JPG



DSCF7387.JPG



DSCF7388.JPG



DSCF7389.JPG



DSCF7390.JPG



DSCF7391.JPG



DSCF7392.JPG



DSCF7393.JPG



DSCF7394.JPG



DSCF7395.JPG



DSCF7396.JPG



DSCF7397.JPG



DSCF7398.JPG



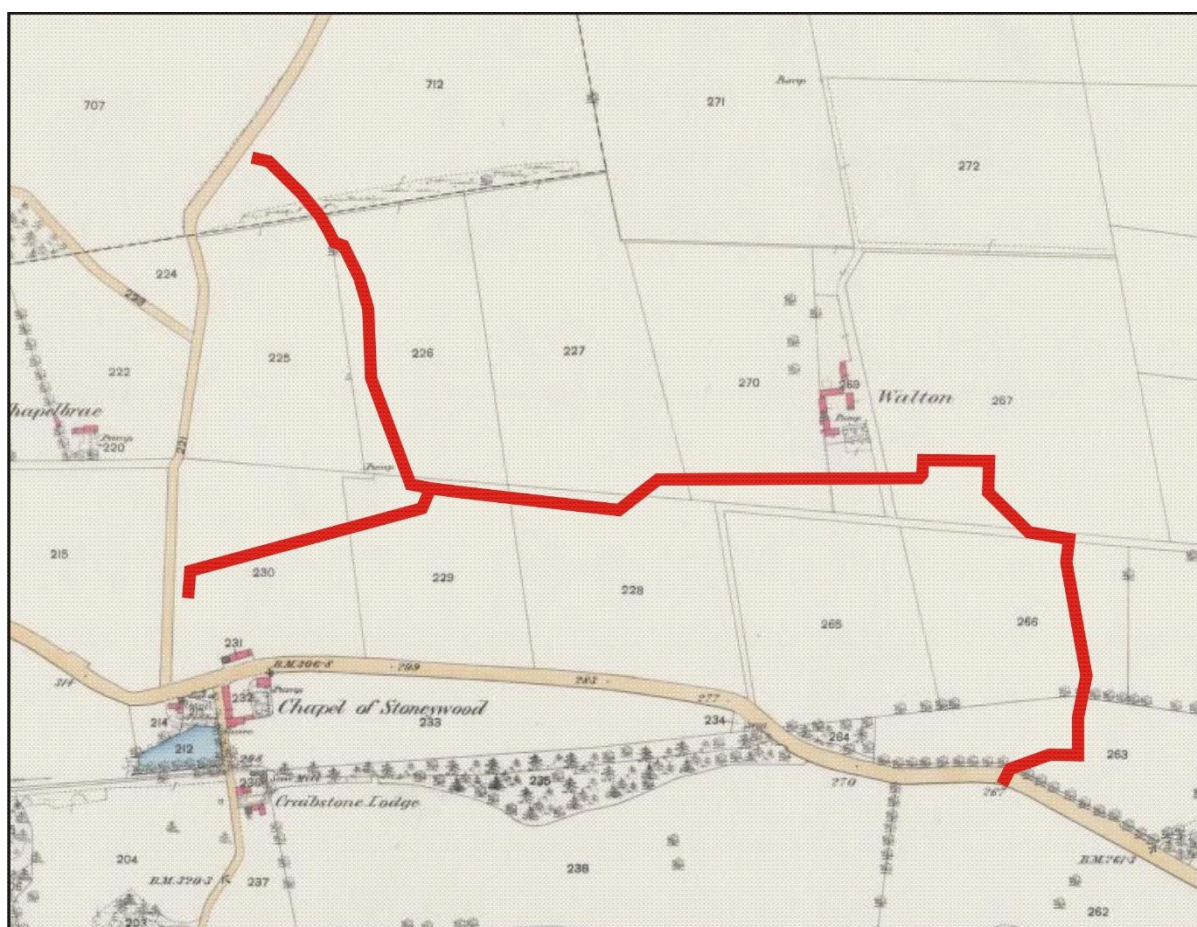
DSCF7399.JPG



DSCF7400.JPG



APPENDIX 2 MAPS AND AERIAL PHOTOGRAPHS



Illus 3 First Edition OS map with route of proposed gas main in red (*copyright National Library of Scotland*) Aberdeen Sheet LXV.16 (Combined) Survey date: 1865 Publication date: 1869



Illus 4 1941 vertical aerial photograph showing proposed gas main replacement in red
(copyright RCAHMS NCAP)

APPENDIX 3 FEATURES

Feature no	Description	Size
F1	Circular post hole filled with black loam and charcoal	70cm diameter
F2	Circular post hole filled with black loam and charcoal	70cm diameter
F3	Small circular post-hole/stake hole filled with black loam and charcoal	20cm diameter
F4	Small circular post-hole/stake hole filled with black loam and charcoal	20 x 30cm
F5	Sub oval ?post-hole/pit filled with black loam and charcoal	40cm diameter
F6	Pit filled with dark grey loam and large stones	1.1m wide, 2.2m long
F7	Sub oval post-hole filled with black loam and charcoal	70 x 35cm
F8	Sub oval post-hole filled with black loam and charcoal	1m x 60cm
F9	Small circular post-hole	Sub oval 40 x 60cm
F10	N-S modern plough mark filled with dark grey sandy loam	20-25cm wide
F11	N-S modern plough mark filled with dark grey sandy loam	20cm wide
1	Dark grey sandy loam topsoil	20-30cm deep
2	Dark grey sandy loam; disturbance from stones being dragged by plough?	-