

**LAND AT NORTH DEESIDE ROAD (OPPOSITE  
INTERNATIONAL SCHOOL), ABERDEEN AB10 7GG  
REPORT ON ARCHAEOLOGICAL EVALUATION**



**Alison Cameron  
Cameron Archaeology  
25 February 2015**

## CONTENTS

1	INTRODUCTION .....	3
2	ARCHAEOLOGICAL BACKGROUND .....	4
3	THE ARCHAEOLOGICAL EVALUATION .....	5
4	RECOMMENDATIONS .....	6
5	REFERENCES .....	6
6	ACKNOWLEDGEMENTS .....	6
	APPENDIX 1 PHOTOGRAPHS .....	7
	APPENDIX 2 MAPS .....	12

## ILLUSTRATIONS

Top Trench 2 completed; facing NNW. Bottom Trench 5 facing S

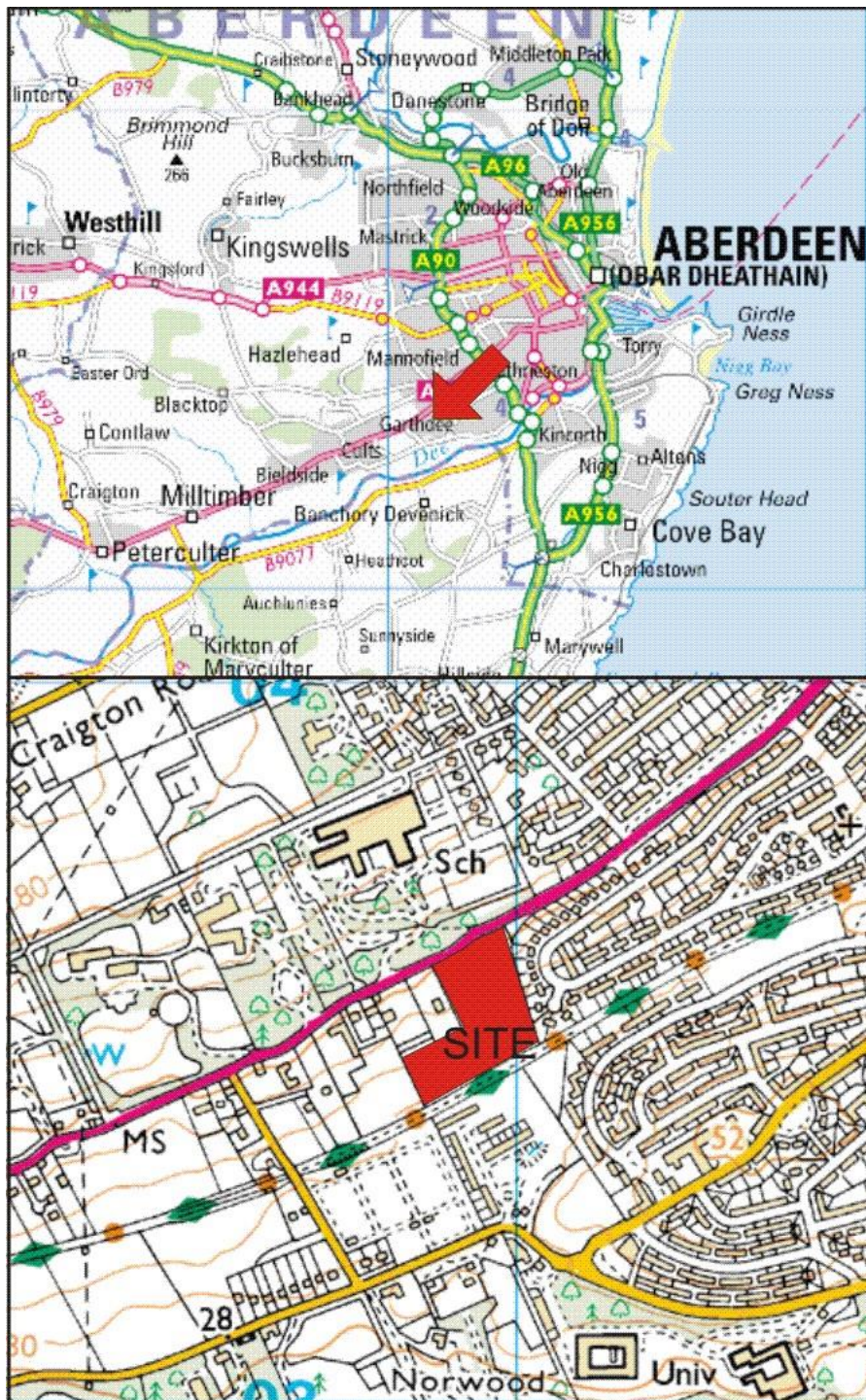
Illus 1	Site location .....	3
Illus 2	Plan showing evaluation trenches .....	5
Illus 3	Ordnance Survey maps .....	12
Illus 4	1946 aerial photograph .....	13

## SUMMARY

A 10% archaeological evaluation was carried out on 18 February 2015 using a tracked machine and 2m flat-edged ditching bucket. No archaeological finds or features were recorded during this evaluation and it is therefore recommended that no further archaeological work is required during the current development.

# 1 INTRODUCTION

The site is at NJ 90945 03539 (centred), in the parish of Aberdeen and at 35-50m OD. It is on the south side of North Deeside Road. Aberdeen City Council Planning application P141260 for proposed residential development consisting of three houses with landscaping was passed by Aberdeen City Council on 4 February 2015 with a requirement for archaeological work to be carried out; Aberdeenshire Archaeology Service (who are covering Aberdeen City) require a 7-10% archaeological evaluation.



Illus 1 Site location (Contains Ordnance Survey data © Crown copyright and database right 2015).

## **2 ARCHAEOLOGICAL BACKGROUND**

- 2.1 There are 48 sites of archaeological and historical interest within 1km of the proposed development. There is one Scheduled Ancient Monument within 1km of the proposed development; Pitfodels Castle (NJ90SW 1) is 600m to the south and is the probable remains of a medieval motte. Several archaeological interventions have taken place at the site including a survey (CFA 1992, 34-5).
- 2.2 The owner of 154 Deeside Gardens, immediately east of the proposed development, recovered a flint end-scraper, barbed and tanged arrowhead whilst gardening and saw but did not recover several flint flakes (NJ90SW 51; NMS 1992, 35). A broken flint blade was found at 46 Gordon Road, Mannofield (NJ90SW 20); its present location is unknown (DES 1975, 57).
- 2.3 The International School on the north side of North Deeside Road was subjected to an archaeological evaluation and building recording prior to the conversion of Viewbank to the school (NJ90SW 252.02). Part of the original Viewbank House with a stone dated 1692 were recorded as well as a World War II bunker. No archaeological finds or contexts were recorded during the evaluation (Cameron 2008, 13).
- 2.4 An archaeological evaluation was carried out at Airyhall Rd (NJ90SW 290) prior to a small residential development; large pits filled with angular granite quarry waste were interpreted as small quarry pits (Cameron 2012, 10).
- 2.5 An archaeological evaluation between Airyhall Road and Craigton Road (NJ90SW 281) was carried out before the construction of a care facility; no significant archaeological remains were uncovered (Cameron 2010, 11).
- 2.6 An archaeological evaluation was undertaken by GUARD prior to the proposed nursery development in Robert Gordon University, Aberdeen (NJ90SW 287). A trial trench amounting to a 2% sample of the development area was excavated by hand. No archaeological remains of any significance were encountered.
- 2.7 A 7% archaeological evaluation and a Level 2 Standing Building Survey were carried out at the former North Garthdee Farm (NJ90SW 184) immediately south of the current development. No significant archaeological remains were uncovered (Cameron 2013, 10).
- 2.8 An evaluation was carried out 7 June–5 July 2010 on the eastern part of a development site at Garthdee Campus (NJ90SW 283) a flint blade was found in a tree boll (Arabaolaza and Becket 2010, 11-12).
- 2.9 There are several 19<sup>th</sup>-century houses and farmsteads in the area including Inchgarth Cottage, Wester Kaimhill, East Middleton, North Garthdee, Braeside.
- 2.10 Ordnance survey maps show the area has been fields since the 1860s (Illus 3) and aerial photographs show former field boundaries but nothing definitively archaeological (Illus 4). The Deeside Railway Line (now a walk) forms the south boundary of the site.

### 3 THE ARCHAEOLOGICAL EVALUATION

A 10% archaeological evaluation was carried out on 18 February 2015 using a tracked machine and 2m flat-edged ditching bucket. The weather was bright and mild.

#### Trenches 1 and 2

Trenches 1 and 2 were 120m long and ran NW-SW on the west side of old drystone dyke AA. The topsoil was 0.1m deep at the north end of these trenches. Two palaeochannels running roughly E-W contained peat up to 1.7m deep; these channels caused historical and modern flooding at the site and several stone drains had been inserted into the site to try to cope with this flooding. No archaeological features or finds were recorded in these trenches.

#### Trenches 3 and 4

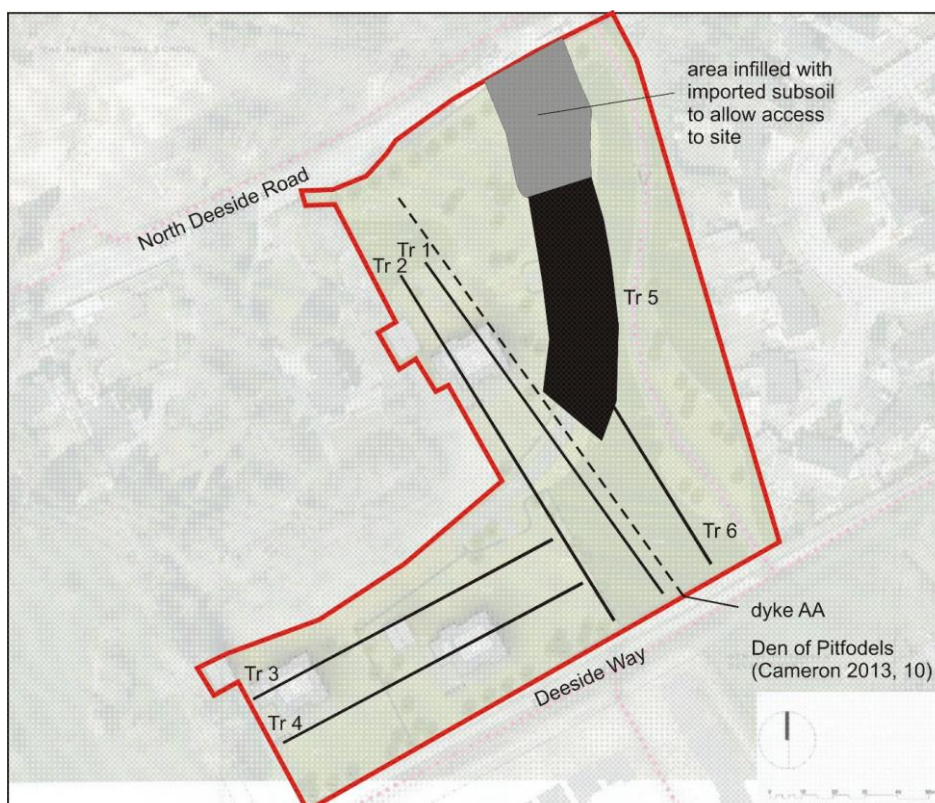
Trenches 3 and 4 were located in the west arm of the site; they were 110m long and ran SW-NE. They revealed NNW-SSE undulations in the natural subsoil which was compact sandy gravel at the east end of the trenches and grey clay at the west. The topsoil varied in depth from 0.1m to 0.7m. Water poured into these trenches during excavation. No archaeological features or finds were recorded in these trenches.

#### Trench 5

Trench 5 was a topsoil strip for the new access road; it was 22m wide and 70m long. One large stone drain ran E-W across the trench and several smaller stone drains ran down the slope at NW-SE orientation. No archaeological features or finds were recorded in this trench.

#### Trench 6

Trench 6 ran 40m from Trench 5. The topsoil was 0.2m deep at the N end of the trench and up to 2m deep at the S end where the trench was abandoned due to flooding. No archaeological features or finds were recorded in this trench.



Illus 2 Plan showing evaluation trenches (*copyright Halliday Fraser Munro*)

## 4 RECOMMENDATIONS

No archaeological finds or features were recorded during this archaeological work and it is therefore recommended that no further archaeological work is required during the current development.

## 5 REFERENCES

Arabaolaza and Becket, I and A 2010 'Robert Gordon University - Garthdee Campus, East Development, Aberdeen (Aberdeen parish), evaluation and excavation', *Discovery Excav Scot, New, vol.11* Cathedral Communications Limited, Wiltshire, England, 11-12.

Cameron, A 2008 'Pitfodels House (Viewbank), Aberdeen City (Aberdeen parish), standing building recording and field evaluation ',*Discovery Excav Scot, New, vol.9* Cathedral Communications Limited, Wiltshire, England, 13.

Cameron, A 2010 'Craigton Road, Pitfodels, Aberdeen (Aberdeen parish), evaluation', *Discovery Excav Scot, New, vol.11* Cathedral Communications Limited, Wiltshire, England, 11.

Cameron, A 2012 'Airyhall Road, Aberdeen (Aberdeen parish), evaluation', *Discovery Excav Scot, New, vol.13* Cathedral Communications Limited, Wiltshire, England, 10.

Cameron, A 2013 Den of Pitfodels, Garthdee Road, Aberdeen (Aberdeen parish), evaluation', *Discovery Excav Scot, New, vol.14* Cathedral Communications Limited, Wiltshire, England, 10.

CFA 1992 'Pitfoddell's Castle (Peterculter parish)', *Discovery Excav Scot*, 34-5.

DES 1975 'Small finds', *Discovery Excav Scot*, 57.

NMS 1992 '154 Deeside Gardens, Aberdeen (Aberdeen parish): flint tools', *Discovery Excav Scot*. 35.

## 6 ACKNOWLEDGEMENTS

I would like to thank Scott Leitch, Halliday Fraser Munro for initiating this project, George Stevenson and MTM staff for help on site and Bruce Mann, Aberdeenshire Council for his advice during the work.

Cameron Archaeology  
45 View Terrace  
Aberdeen  
AB25 2RS  
01224 643020  
07581 181057  
[cameronarch@btinternet.com](mailto:cameronarch@btinternet.com)  
[www.cameronarchaeology.com](http://www.cameronarchaeology.com)  
Company registration no 372223 (Scotland)  
VAT registration no 990 4373 00

## APPENDIX 1 PHOTOGRAPHS



DSC\_0585.JPG



DSC\_0586.JPG



DSC\_0587.JPG



DSC\_0588.JPG



DSC\_0589.JPG



DSC\_0590.JPG



DSC\_0591.JPG



DSC\_0592.JPG



DSC\_0593.JPG



DSC\_0594.JPG



DSC\_0595.JPG



DSC\_0596.JPG



DSC\_0597.JPG



DSC\_0598.JPG



DSC\_0599.JPG



DSC\_0600.JPG



DSC\_0601.JPG



DSC\_0602.JPG



DSC\_0603.JPG



DSC\_0604.JPG



DSC\_0605.JPG



DSC\_0606.JPG



DSC\_0607.JPG



DSC\_0608.JPG



DSC\_0609.JPG



DSC\_0610.JPG



DSC\_0611.JPG



DSC\_0612.JPG



DSC\_0613.JPG



DSC\_0614.JPG



DSC\_0615.JPG



DSC\_0616.JPG



DSC\_0617.JPG



DSC\_0618.JPG



DSC\_0619.JPG





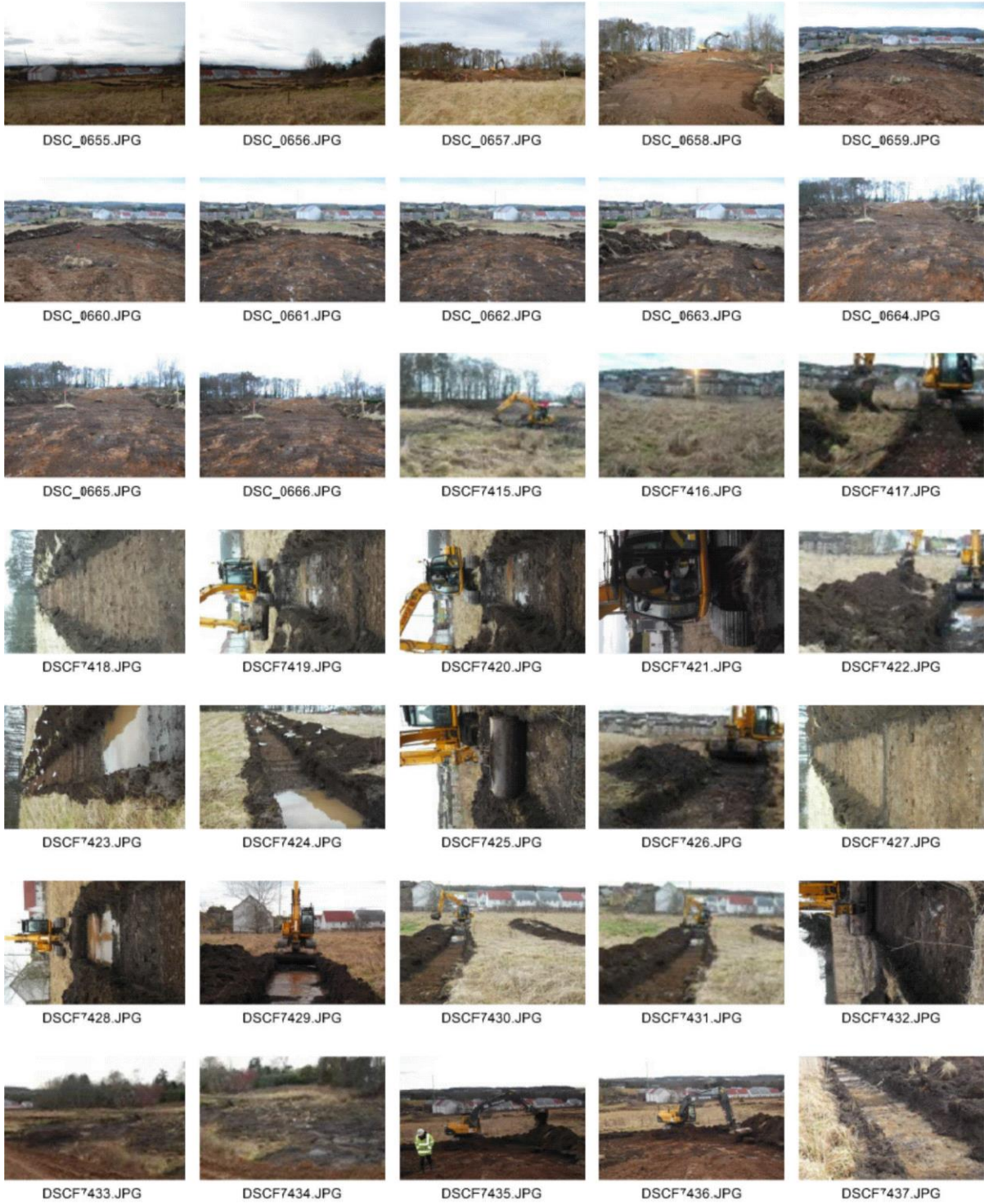
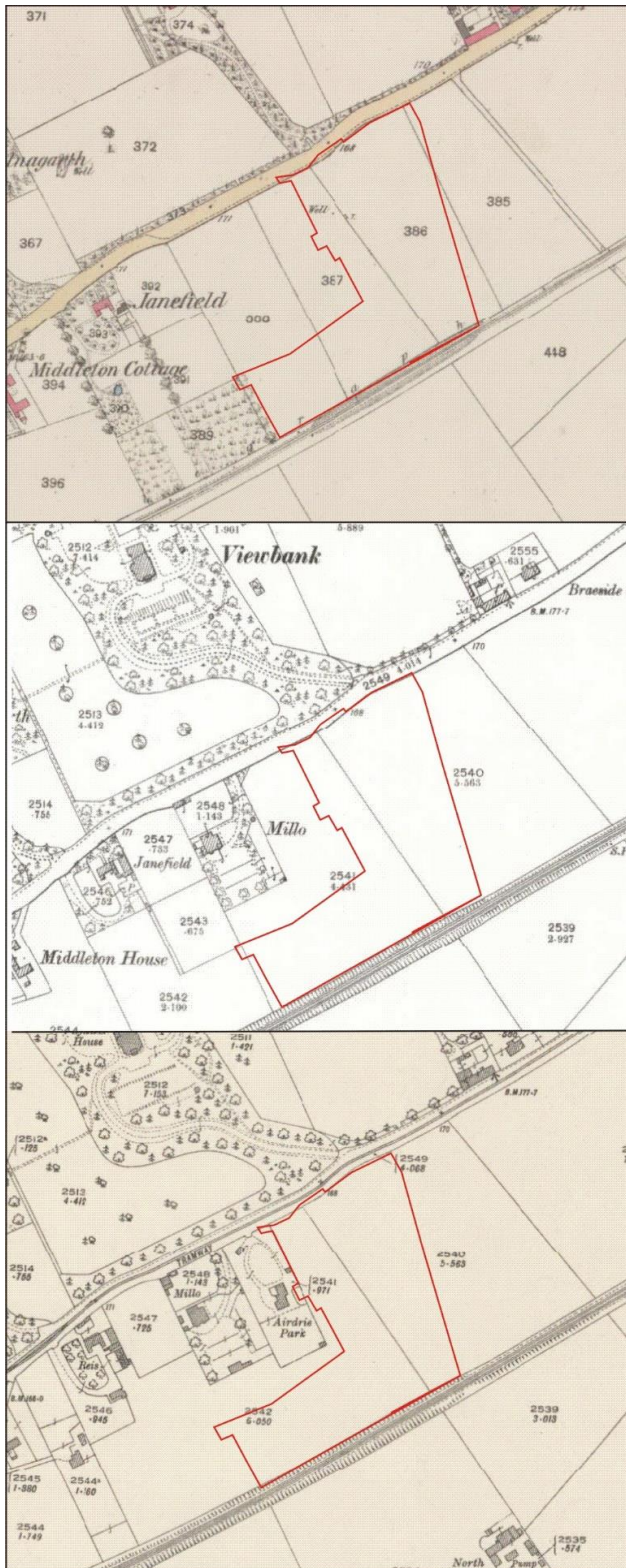




Photo no	Description	Facing
DSC_0585-598	Upfill at N of site to allow access; sharp drop off from N Deeside Rd created by raising level of ground to create road	
DSC_0599-602	Trench 5 soil strip for new access road	
DSC_0603-611	Drystone dyke AA	
DSC_0612-618	General location photos	
DSC_0619	Trench 1	SSE
DSC_0620-22	Trench 2	SSE
DSC_0623	Trench 2 south half	SSE
DSC_0624	Trench 1 (right) Trench 2 (left) showing steep drop off to Deeside Line at S edge of site; Den of Pitfodels development (Background)	SSE
DSC_0625	Trench 1 (foreground) Tr 3 and 4 (background)	SW

DSC_0626	Trench 1 (right) Trench 2 (left) showing steep drop off to Deeside Line at S edge of site; Den of Pitfodels development (Background)	SSE
DSC_0627-8	Trench 2	NNW
DSC_0629	Trench 2 (right) Tr 1 (left)	NW
DSC_0630	Trench 3 (left) Tr 4 (right)	SW
DSC_0631-2	Trench 1	NNW
DSC_0633-8	Trench 3	SW
DSC_0639	Trench 3 NE end with Tr 1 (background)	NE
DSC_0640-1	Trench 3 (left) Tr 1 , Tr 2	NE
DSC_0642	Trench 4	SW
DSC_0643	Trench 4	NE
DSC_0644-45	Tr 4, Tr 3 from SW corner of site N Deeside Line	NE
DSC_0646	Tr 4	NNW
DSC_0647-8	Tr 4, Tr 3	NNW/N
DSC_0649	Tr 4, Tr 3	SW
DSC_0650	Tr 1, Tr 2	NNW
DSC_0651-54	AA south end	NW/NNW
DSC_06555-56	Tr 1-4	SSW/SW
DSC_0657-666	Tr 5 soil strip	
DSCF7417-24	Tr 1	
DSCF7425-31	Tr 2	
DSCF7432	Tr 3	
DSCF7433-34	Tr 1, Tr 2 from N of site	
DSCF7435-36	Tr 5 soil strip	S
DSCF7437	Tr 3	
DSCF7438-39	Tr 4 waterlogging	
DSCF7440-42	Tr 3, Tr 4	
DSCF7443	Tr 3 W end	NE
DSCF7445-59	Tr 5 soil strip	

## APPENDIX 2 MAPS



Illus 3 First Edition OS maps (top) First Edition Kincardine Sheet IV.5 (Combined)  
 Survey date: 1865 Publication date: 1868 (middle) Second Edition Aberdeenshire, Sheet 086.02  
 Publication date: 1901 Revised: ca. 1899 (bottom) Aberdeenshire, Sheet 086.02 Publication date:  
 1925 Revised: ca. 1923 Levelled: 1899 (copyright National Library of Scotland)



Illus 4 1946 aerial photograph showing approximate area of site outlined in red (*copyright NCAP*). Date: 15 January 1946 UNI: NCAP-000-000-087-397 Sortie: 106G/UK/1125