

**INCHGARTH HOUSE, INCHGARTH ROAD, ABERDEEN  
AB15 9NX  
REPORT ON STANDING BUILDING SURVEY**



**Alison Cameron  
Cameron Archaeology  
10 April 2015**

## CONTENTS

### Contents

1	INTRODUCTION.....	4
2	BACKGROUND.....	5
3	THE STANDING BUILDING SURVEY.....	5
3.1	PHASE 1.....	7
3.3	PHASE 2 .....	12
3.3	PHASE 3 .....	14
4	CONCLUSIONS .....	14
4.1	ABERDEEN POST OFFICE DIRECTORIES (see Appendix 3 for details) .....	14
4.2	NEWSPAPER ADVERTISEMENTS (Illus 31-33).....	15
5	REFERENCES.....	15
6	ACKNOWLEDGEMENTS.....	15
	APPENDIX 1 PHOTOGRAPHS .....	16
	APPENDIX 2 MAPS AND OLD PHOTOGRAPHS.....	39
	APPENDIX 3 FEATURES RECORDED IN THIS SURVEY.....	46
	APPENDIX 3 POST OFFICE DIRECTORY ENTRIES .....	48

## ILLUSTRATIONS

Cover top: SSE façade; facing NNW. Bottom Window W24 with stained glass

Illus 1	Site location .....	4
Illus 2	First (left) and Second (middle) edition OS maps.....	5
Illus 3	Ground floor plan with main features .....	5
Illus 4	First floor plan with main features .....	6
Illus 5	NE and NW elevations with features recorded.....	6
Illus 6	SW and SE elevations with features labelled .....	7
Illus 7	W13 (left) and W14 (Room 6 partially obscured by Phase 2 Stair 1).....	8
Illus 8	Phase 1 main entrance with Chimney 4 (above).....	8
Illus 9	Room 2 bay window W7-9 (right) and W10 (left) with fireplace F2 (centre).....	9
Illus 10	Exterior of Phase 1 gable chimney now built into Phase 2 loft space .....	9
Illus 11	Detail of Phase 1 chimney stack design.....	10
Illus 12	Relieving arch above window W9A; facing WSW.....	10
Illus 13	Room 2 door fittings (left) and light switches (bottom right).....	11
Illus 14	Window W20 in Phase 2 Stairwell 2; facing ENE .....	11
Illus 15	WSW aspect with Phase 1 (right) Phase 2 (centre) Phase 3 (left).....	12
Illus 16	Stair 1 with W13 (right) W18 (top left) .....	12
Illus 17	Gable chimney stack on NW end of Phase 4 (above fireplace F5).....	13
Illus 18	Wall 1 probably Phase 2; the garden was re-landscaped.....	13
Illus 19	Phase plan.....	14
Illus 20	Camera points Inchgarth House Ground floor .....	16
Illus 21	Camera points Inchgarth House First floor .....	17
Illus 22	Camera points Inchgarth House grounds.....	18

Illus 23 Roy Military Survey of Scotland 1747-55 .....	39
Illus 24 Pont 1583-96 with approximate area of Inchgarth House circled in red.....	40
Illus 25 First Edition OS map.....	41
Illus 26 Second Edition OS map. ....	42
Illus 27 3 <sup>rd</sup> edition OS map. ....	43
Illus 28 1975-76 photograph of SW façade, Inchgarth House.....	44
Illus 29 1975-76 photograph, view from north, Inchgarth House.....	44
Illus 30 1975-76 photograph, view from north east, Inchgarth House .....	45
Illus 31 Newspaper cutting 1860 announcing roup of Inchgarth House .....	50
Illus 32 Newspaper cutting announcing roup at Inchgarth House, 18 September 1860 .....	51
Illus 33 Newspaper cutting announcing roup of Inchgarth House, 8 September 1896 .....	52

## SUMMARY

The standing building survey was carried out on 17 March 2015; the weather was mild and bright. Kirkwood Homes architects plans were checked and annotated and a full photographic survey was carried out. At least three phases of development were identified and are outlined in this report.

# 1 INTRODUCTION

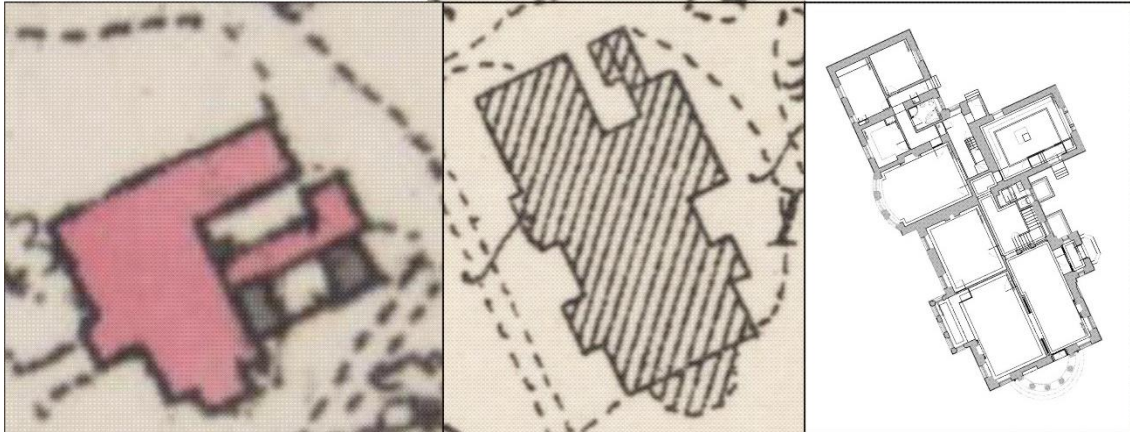
The site is at NJ 90521 03103 (centred), in the parish of Peterculter and at 20-30m OD. It is on the south side of Inchgarth Road between Drumgarth of the east and Inchgarth Farm on the west. Aberdeen City Council Planning Application P150523 and Listed Building Consent P150524 for removal of existing garage and single story extension to Ne elevation, convert house and 2 flats back to 1 house, erect new extensions to NE and NW elevations and refurbish all windows are pending.



Illus 1 Site location (Contains Ordnance Survey data © Crown copyright and database right 2015).

## 2 BACKGROUND

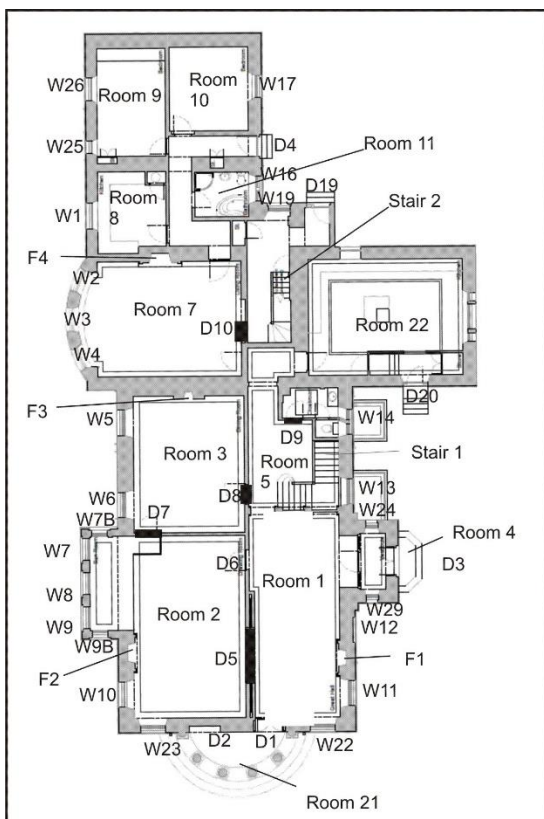
Inchgarth House (Illus 1) appears on the First Edition OS map (Illus 2) as an L-plan house with bay window on SSE and extensions to the east. The house was redesigned by A Marshall Mackenzie in 1897 (Brogden 1986, 138).



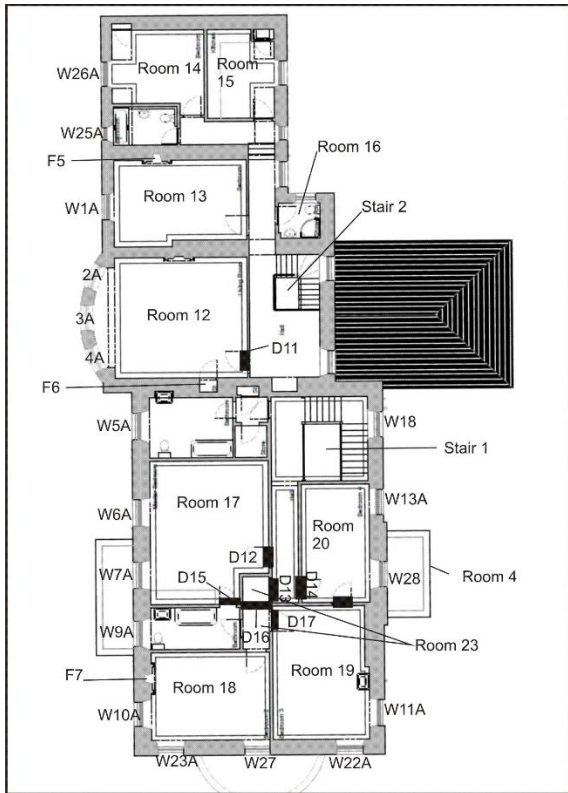
Illus 2 First (left) and Second (middle) edition OS maps (*copyright National Library of Scotland*) with modern plan (right; *copyright Kirkwood Homes*).

## 3 THE STANDING BUILDING SURVEY

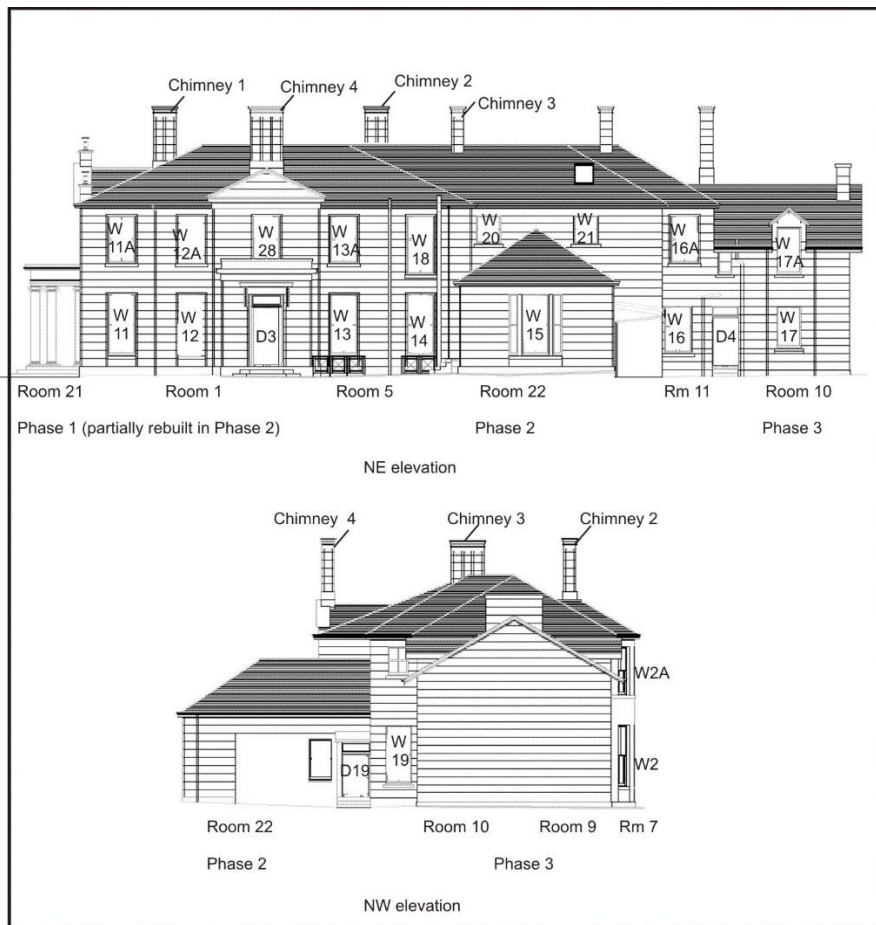
The standing building survey was carried out on 17 March 2015; the weather was mild and bright. Kirkwood Homes architects plans were checked and annotated and a full photographic survey was carried out.



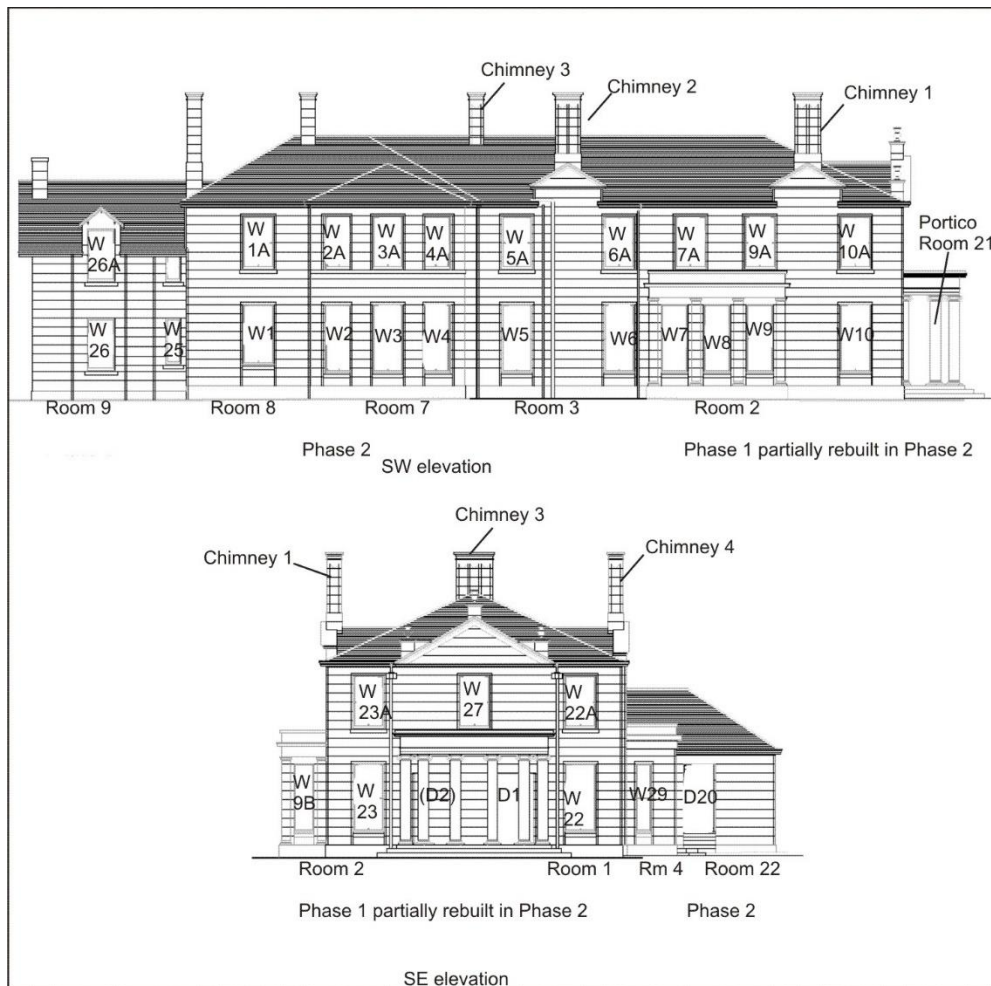
Illus 3 Ground floor plan with main features (*copyright Kirkwood Homes*)



Illus 4 First floor plan with main features (copyright Kirkwood Homes)



Illus 5 NE and NW elevations with features recorded (copyright Kirkwood Homes)



Illus 6 SW and SE elevations with features labelled (copyright Kirkwood Homes)

### 3.1 PHASE 1

A substantial house stands on the site as depicted on the First Ordnance Survey map (Illus 2). The footprint of this appears to have been incorporated in the southern part of the current house; there may have been substantial rebuilding or the Phase 2 addition may have been built on sympathetically using similar materials and styles.

The house is constructed of granite blocks with cherry cocking throughout. Lintels and sills are of granite. The Phase 1 section of the house consists of four main rooms on ground and first floor (Rooms 1, 2, 3 and 5, possibly with porch Room4 and first floor rooms 17-20). The current stair is a later Phase 2 addition and the location of the original Phase 1 stair was probably more central to the building, meeting the first floor around Doors D13 and D16 which are of arched construction suggesting that they may have led from a first floor landing.

The Phase 2 Stair 1 partially covers two windows, W13 and W14 (Illus 7) suggesting that the windows are Phase 1 (possibly with reglazing with stained glass in Phase 2) and the stair added in 1897. The Phase 1 house has decorated chimney stacks with inset chevron design (double chevron, Illus 11; triple chevron, Illus 8) which may date from Phase 1 above triangular gablets. The Phase 2 and 3 additions have plain chimney stacks. There are three granite urn finials above the Phase 1 SSE façade.



Illus 7 W13 (left) and W14 (Room 6 partially obscured by Phase 2 Stair 1); facing ENE



Illus 8 Phase 1 main entrance with Chimney 4 (above); facing WSW





Illus 9 Room 2 bay window W7-9 (right) and W10 (left) with fireplace F2 (centre); facing WSW



Illus 10 Exterior of Phase 1 gable chimney now built into Phase 2 loft space (above fireplace F6); facing SSE



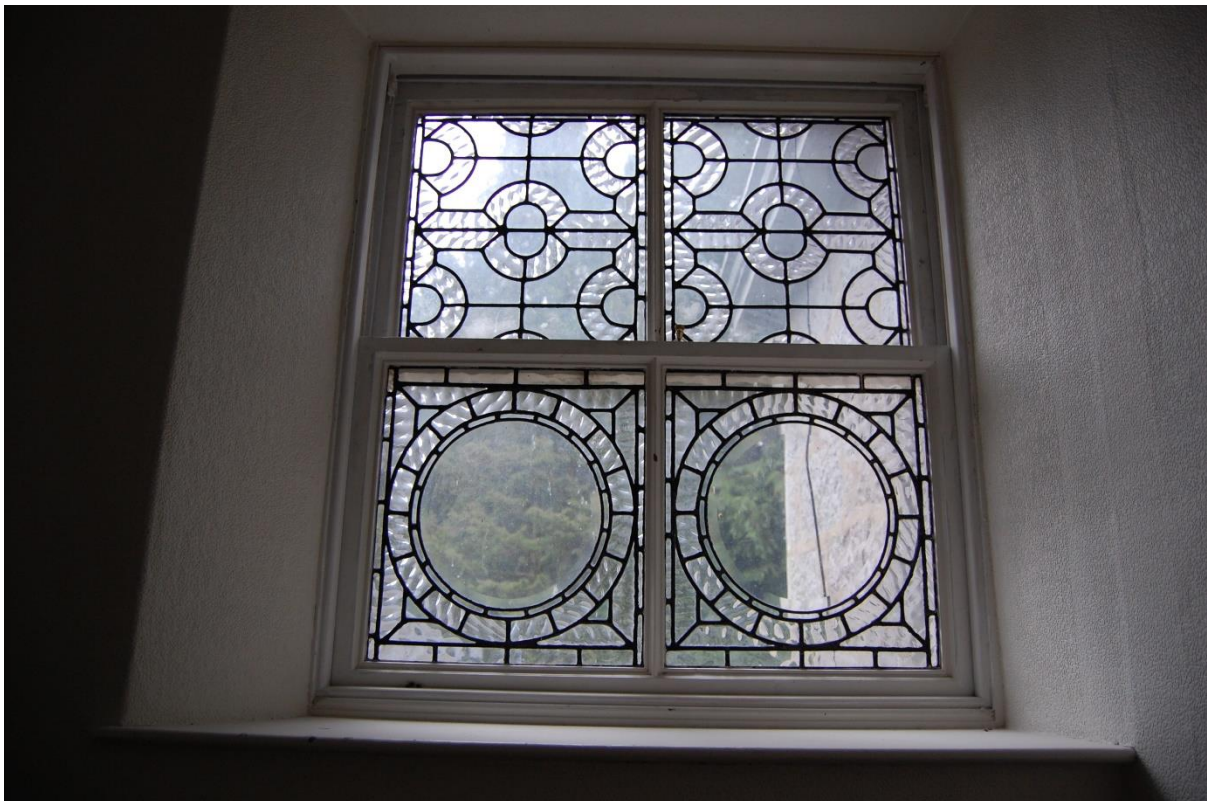
Illus 11 Detail of Phase 1 chimney stack design (Chimney 1; possibly replaced in Phase 2); facing ENE



Illus 12 Relieving arch above window W9A; facing WSW



Illus 13 Room 2 door fittings (left) and light switches (bottom right) and Satchwell thermostat, The Rheostatic Co Ltd, Slough Type N No 10812 Automatic control for electric heaters, Patent 1948 in UK (top right); facing ENE.



Illus 14 Window W20 in Phase 2 Stairwell 2; facing ENE

### 3.3 PHASE 2

Phase 2 Rooms 7, 8, 11 and kitchen Room 22 on the ground floor and Rooms 12, 13 and 16 bedrooms on the first floor were probably constructed in the Marshall Mackenzie rebuild of 1897. A large drawing room (Room 7 with bay window (Illus 15)) was added with smaller ground floor rooms and extra bedrooms on the first floor. A decorative stair was added (Stair 1) and the ground floor and the wood panelling probably added throughout during this period. The garden was redesigned between the First and Second Ordnance Survey maps and Wall 1 with Steps 1 added including urns (Illus 18, 22). The Phase 2 extension is constructed of large granite blocks and cherry cocking (as Phase 1) but the chimney stacks are undecorated.



Illus 15 WSW aspect with Phase 1 (right) Phase 2 (centre) Phase 3 (left); facing ENE



Illus 16 Stair 1 with W13 (right) W18 (top left); facing NNE



Illus 17 Gable chimney stack on NW end of Phase 4 (above fireplace F5) visible in attic; facing NW



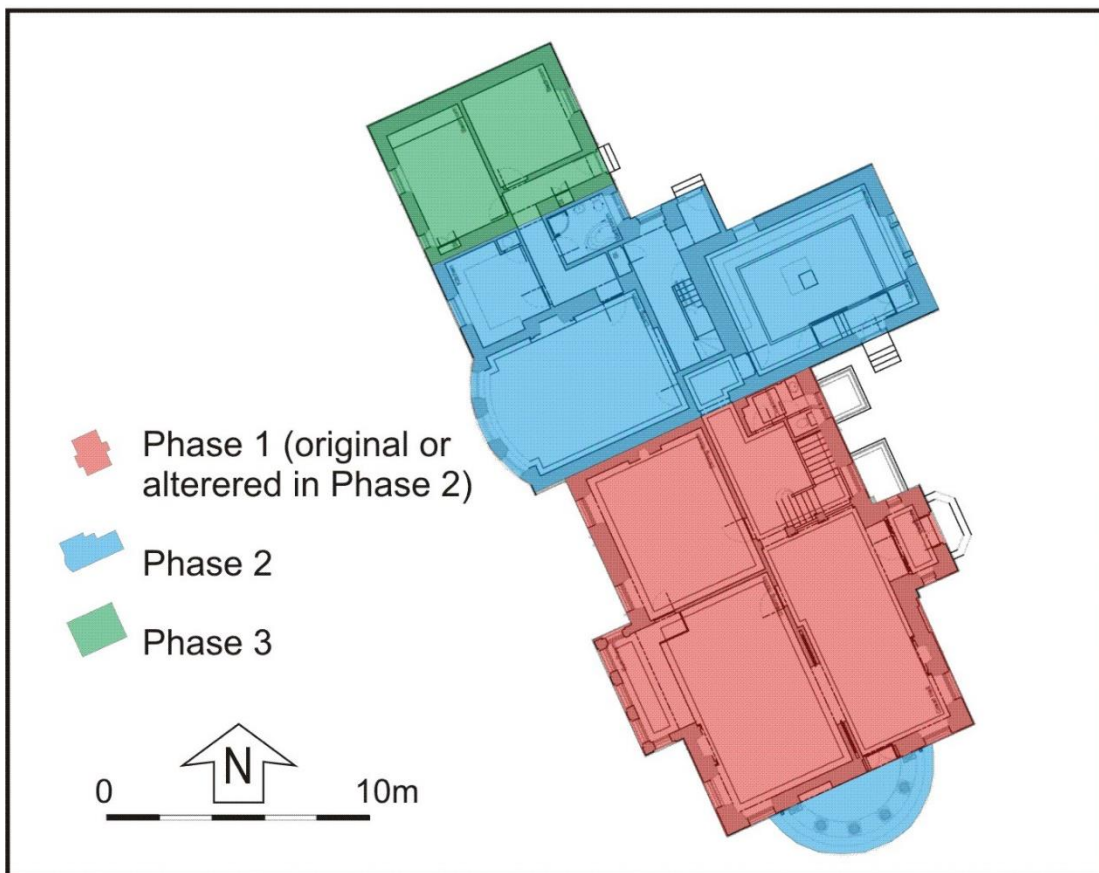
Illus 18 Wall 1 probably Phase 2; the garden was re-landscaped between the First and Second OS maps; facing SW.

### 3.3 PHASE 3

An extension 8.7m wide on the NW end of the house was constructed in Phase 3. This annex consists of three rooms and a bathroom on first floor (Rooms 8-11) and second floor (Rooms 13-16).

## 4 CONCLUSIONS

At least three phases of construction have been recorded as well as many other smaller alterations. The Phase 1 house constructed by 1867 (First Edition OS) may have been slighted and rebuilt on the same footprint, or substantially rebuilt by Marshall Mackenzie in 1897 (Phase 2). An extension was also constructed in Phase 3. The architect's plans were in the firm of Marshall Mackenzie and Marr in 1960 and may be with the son of John Gibb Marr (Aaron Macaskill, Kirkwood Homes, pers comm). These plans will shed light on the exact nature of the rebuilding and extensions and may contain details of the Phase 1 earlier house.



Illus 19 Phase plan (copyright Kirkwood Homes)

### 4.1 ABERDEEN POST OFFICE DIRECTORIES (see Appendix 3 for details)

Aberdeen Post Office Directories reveal Inchgarth was owned by George Skene Tayler from 1868. The PO Directories also list James Murray, salmon fisher from 1879-1884-5 (of 22 Holburn Rd and then 45 Broomhill Place). By 1894-5 only Mrs George S Tayler is listed presumably after the death of her husband.

By 1895-6 it was registered to Henry F Begg of Lochnagar Royal Distillery and in 1896-7 John Begg distiller to the Queen HRH the Prince of Wales and Duke of Edinburgh, Lochnagar Distillery whose office was at 17 Weigh-house Square.

By 1897-8 it was registered to W R Reid, advocate, Union Chambers, 46A Union Street who is mentioned in the advert of 1896 for the roup of the property (Illus 33). He has a gardener, George Taylor of Inchgarth and Raeden, who lives at Raeden, Mid Stocket Rd.

It is registered to John Graham, grain merchant, Grant and Co from 1903-4 until at least 1911-12.

## 4.2 NEWSPAPER ADVERTISEMENTS (Illus 31-33)

Newspaper adverts for 1860 reveal that the lands and estate of Inchgarth, part of the Barony of Pitfoddels in the Parish of Banchory-Devenick and the County of Aberdeen forms part of the sequestrated estate of Anthony Adrian Blaikie, Advocate of Aberdeen. It comprises 86½ acres for sale at a reduced price of £1000 sterling. It describes that 'within the past few years there have been built on the high land, a neat cottage of two floors, a most commodious Farm Steading, with Grieve's House, sufficient for a farmer, and farming the whole land, with good accommodation for servants and a Gardener's Lodge at the Garden'. (Illus 31). There was also a roup of the household contents (Illus 32).

On 8<sup>th</sup> September 1896 there was another advert for a roup by W A Reid (who is mentioned in the Post Office Directories; Appendix 3). The property is 94 acres of which 72 acres is arable and the property is described as a 'mansion house'. The house contains 'an Entrance hall, large double Drawing Room, Dining-Room, Business Room, Billiard Room, 9 Bedrooms, Store Room, Butler's Pantry, Kitchen, 2 Bathrooms, 4 WCs etc and ample servant's accommodation. The house is lit throughout by the Electric Light and supplied by a hot and cold water circulation. The whole of the interior of the mansion was decorated quite recently'. Entry will be by Whitsunday 1897 and the price is now £13,000.

## 5 REFERENCES

**Brogden, WA** 1986 Aberdeen: An Illustrated Architectural Guide. Edinburgh.

**Post Office Directories for Aberdeen** accessed online 21.3.15. <http://www.nls.uk/family-history/directories/post-office/index.cfm?place=Aberdeen>

## 6 ACKNOWLEDGEMENTS

I would like to thank Allan Rae, Kirkwood Homes for initiating this project and Aaron Macaskill, Kirkwood Homes for his help on site and for supplying newspaper cuttings and with other documents.

Cameron Archaeology

45 View Terrace

Aberdeen

AB25 2RS

01224 643020

07581 181057

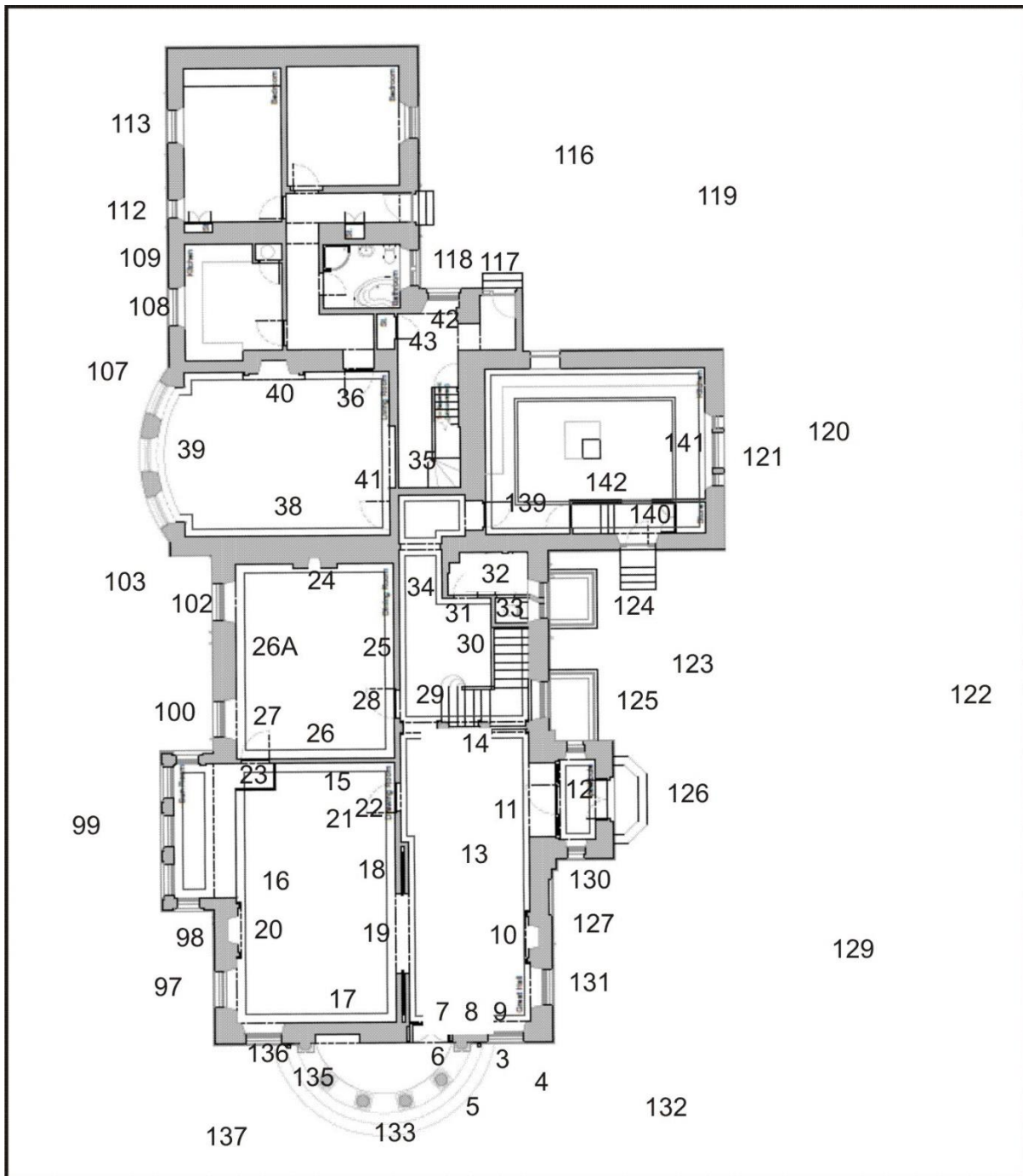
[cameronarch@btinternet.com](mailto:cameronarch@btinternet.com)

[www.cameronarchaeology.com](http://www.cameronarchaeology.com)

Company registration no 372223 (Scotland)

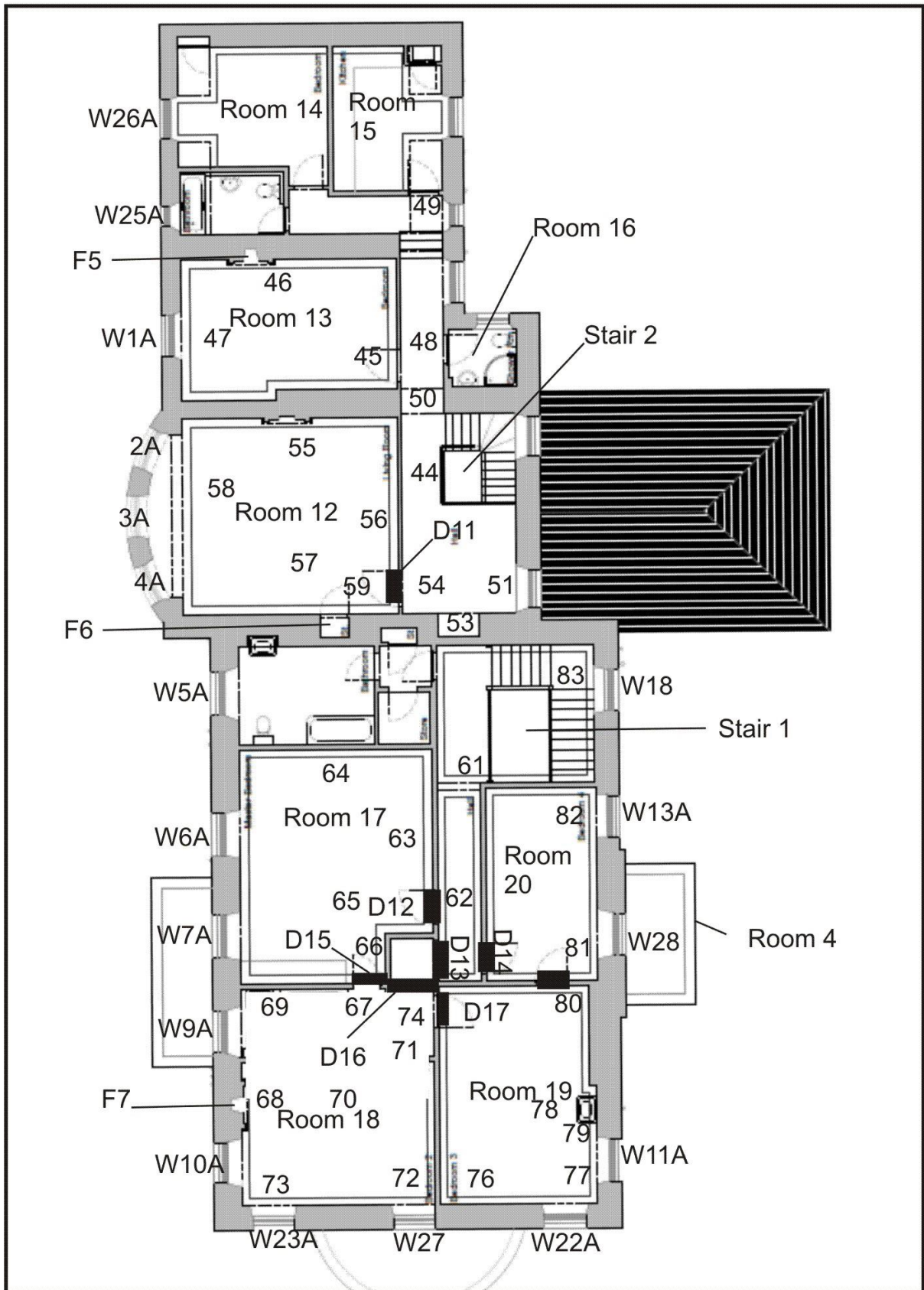
VAT registration no 990 4373 00

**APPENDIX 1 PHOTOGRAPHS**

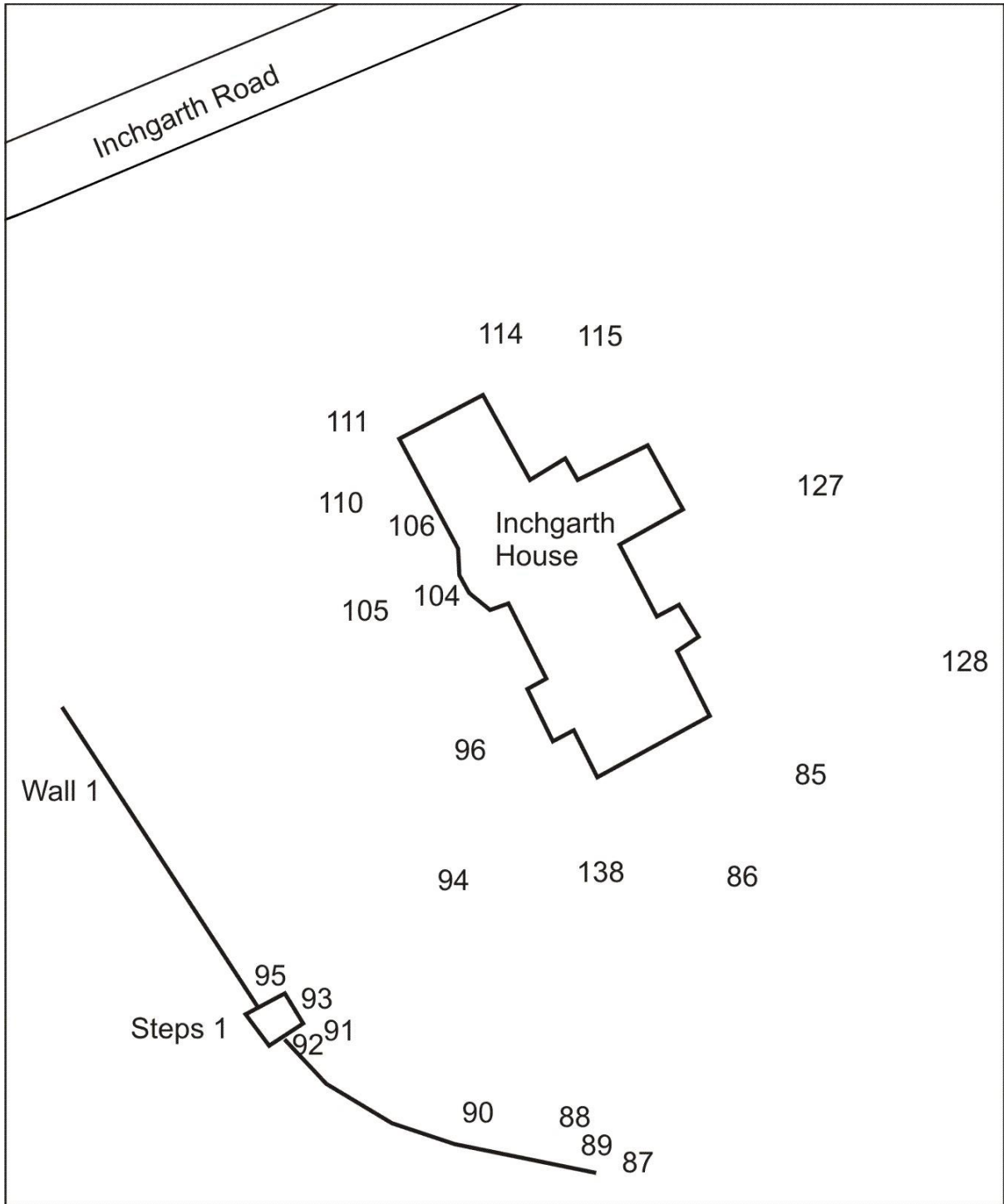


**Illus 20** Camera points Inchgarth House Ground floor (copyright Kirkwood Homes)





**Illus 21** Camera points Inchgarth House First floor (copyright Kirkwood Homes)



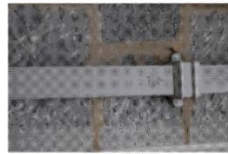
Illus 22 Camera points Inchgarth House grounds (copyright National Library of Scotland).



DSC\_0211.JPG



DSC\_0212.JPG



DSC\_0213.JPG



DSC\_0214.JPG



DSC\_0215.JPG



DSC\_0216.JPG



DSC\_0217.JPG



DSC\_0218.JPG



DSC\_0219.JPG



DSC\_0220.JPG



DSC\_0221.JPG



DSC\_0222.JPG



DSC\_0223.JPG



DSC\_0224.JPG



DSC\_0225.JPG



DSC\_0226.JPG



DSC\_0227.JPG



DSC\_0228.JPG



DSC\_0229.JPG



DSC\_0230.JPG



DSC\_0231.JPG



DSC\_0232.JPG



DSC\_0233.JPG



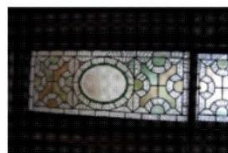
DSC\_0234.JPG



DSC\_0235.JPG



DSC\_0236.JPG



DSC\_0237.JPG



DSC\_0238.JPG



DSC\_0239.JPG



DSC\_0240.JPG



DSC\_0241.JPG



DSC\_0242.JPG



DSC\_0243.JPG



DSC\_0244.JPG



DSC\_0245.JPG



DSC\_0246.JPG



DSC\_0247.JPG



DSC\_0248.JPG



DSC\_0249.JPG



DSC\_0250.JPG



DSC\_0251.JPG



DSC\_0252.JPG



DSC\_0253.JPG



DSC\_0254.JPG



DSC\_0255.JPG



DSC\_0256.JPG



DSC\_0257.JPG



DSC\_0258.JPG



DSC\_0259.JPG



DSC\_0260.JPG



DSC\_0261.JPG



DSC\_0262.JPG



DSC\_0263.JPG



DSC\_0264.JPG



DSC\_0265.JPG



DSC\_0266.JPG



DSC\_0267.JPG



DSC\_0268.JPG



DSC\_0269.JPG



DSC\_0270.JPG



DSC\_0271.JPG



DSC\_0272.JPG



DSC\_0273.JPG



DSC\_0274.JPG



DSC\_0275.JPG



DSC\_0276.JPG



DSC\_0277.JPG



DSC\_0278.JPG



DSC\_0279.JPG



DSC\_0280.JPG



DSC\_0281.JPG



DSC\_0282.JPG



DSC\_0283.JPG



DSC\_0284.JPG



DSC\_0285.JPG



DSC\_0286.JPG



DSC\_0287.JPG



DSC\_0288.JPG



DSC\_0289.JPG



DSC\_0290.JPG



DSC\_0291.JPG



DSC\_0292.JPG



DSC\_0293.JPG



DSC\_0294.JPG



DSC\_0295.JPG



DSC\_0296.JPG



DSC\_0297.JPG



DSC\_0298.JPG



DSC\_0299.JPG



DSC\_0300.JPG



DSC\_0301.JPG



DSC\_0302.JPG



DSC\_0303.JPG



DSC\_0304.JPG



DSC\_0305.JPG



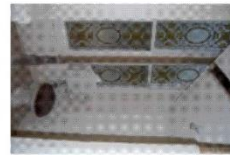
DSC\_0306.JPG



DSC\_0307.JPG



DSC\_0308.JPG



DSC\_0309.JPG



DSC\_0310.JPG



DSC\_0311.JPG



DSC\_0312.JPG



DSC\_0313.JPG



DSC\_0314.JPG



DSC\_0315.JPG



DSC\_0316.JPG



DSC\_0317.JPG



DSC\_0318.JPG



DSC\_0319.JPG



DSC\_0320.JPG



DSC\_0321.JPG



DSC\_0322.JPG



DSC\_0323.JPG



DSC\_0324.JPG



DSC\_0325.JPG



DSC\_0326.JPG



DSC\_0327.JPG



DSC\_0328.JPG



DSC\_0329.JPG



DSC\_0330.JPG



DSC\_0331.JPG



DSC\_0332.JPG



DSC\_0333.JPG



DSC\_0334.JPG



DSC\_0335.JPG



DSC\_0336.JPG



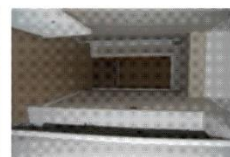
DSC\_0337.JPG



DSC\_0338.JPG



DSC\_0339.JPG



DSC\_0340.JPG



DSC\_0341.JPG



DSC\_0342.JPG



DSC\_0343.JPG



DSC\_0344.JPG



DSC\_0345.JPG



DSC\_0346.JPG



DSC\_0347.JPG



DSC\_0348.JPG



DSC\_0349.JPG



DSC\_0350.JPG



DSC\_0351.JPG



DSC\_0352.JPG



DSC\_0353.JPG



DSC\_0354.JPG



DSC\_0355.JPG



DSC\_0356.JPG



DSC\_0357.JPG



DSC\_0358.JPG



DSC\_0359.JPG



DSC\_0360.JPG



DSC\_0361.JPG



DSC\_0362.JPG



DSC\_0363.JPG



DSC\_0364.JPG



DSC\_0365.JPG



DSC\_0366.JPG



DSC\_0367.JPG



DSC\_0368.JPG



DSC\_0369.JPG



DSC\_0370.JPG



DSC\_0371.JPG



DSC\_0372.JPG



DSC\_0373.JPG



DSC\_0374.JPG



DSC\_0375.JPG



DSC\_0376.JPG



DSC\_0377.JPG



DSC\_0378.JPG



DSC\_0379.JPG



DSC\_0380.JPG



DSC\_0381.JPG



DSC\_0382.JPG



DSC\_0383.JPG



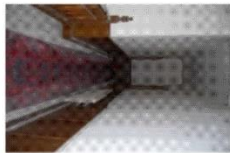
DSC\_0384.JPG



DSC\_0385.JPG



DSC\_0386.JPG



DSC\_0387.JPG



DSC\_0388.JPG



DSC\_0389.JPG



DSC\_0390.JPG



DSC\_0391.JPG



DSC\_0392.JPG



DSC\_0393.JPG



DSC\_0394.JPG



DSC\_0395.JPG



DSC\_0396.JPG



DSC\_0397.JPG



DSC\_0398.JPG



DSC\_0399.JPG



DSC\_0400.JPG



DSC\_0401.JPG



DSC\_0402.JPG



DSC\_0403.JPG



DSC\_0404.JPG



DSC\_0405.JPG



DSC\_0406.JPG



DSC\_0407.JPG



DSC\_0408.JPG



DSC\_0409.JPG



DSC\_0410.JPG



DSC\_0411.JPG



DSC\_0412.JPG



DSC\_0413.JPG



DSC\_0414.JPG



DSC\_0415.JPG



DSC\_0416.JPG



DSC\_0417.JPG



DSC\_0418.JPG



DSC\_0419.JPG



DSC\_0420.JPG





DSC\_0421.JPG



DSC\_0422.JPG



DSC\_0423.JPG



DSC\_0424.JPG



DSC\_0425.JPG



DSC\_0426.JPG



DSC\_0427.JPG



DSC\_0428.JPG



DSC\_0429.JPG



DSC\_0430.JPG



DSC\_0431.JPG



DSC\_0432.JPG



DSC\_0433.JPG



DSC\_0434.JPG



DSC\_0435.JPG



DSC\_0436.JPG



DSC\_0437.JPG



DSC\_0438.JPG



DSC\_0439.JPG



DSC\_0440.JPG



DSC\_0441.JPG



DSC\_0442.JPG



DSC\_0443.JPG



DSC\_0444.JPG



DSC\_0445.JPG



DSC\_0446.JPG



DSC\_0447.JPG



DSC\_0448.JPG



DSC\_0449.JPG



DSC\_0450.JPG



DSC\_0451.JPG



DSC\_0452.JPG



DSC\_0453.JPG



DSC\_0454.JPG



DSC\_0455.JPG



DSC\_0456.JPG



DSC\_0457.JPG



DSC\_0458.JPG



DSC\_0459.JPG



DSC\_0460.JPG



DSC\_0461.JPG



DSC\_0462.JPG



DSC\_0463.JPG



DSC\_0464.JPG



DSC\_0465.JPG



DSC\_0466.JPG



DSC\_0467.JPG



DSC\_0468.JPG



DSC\_0469.JPG



DSC\_0470.JPG



DSC\_0471.JPG



DSC\_0472.JPG



DSC\_0473.JPG



DSC\_0474.JPG



DSC\_0475.JPG



DSC\_0476.JPG



DSC\_0477.JPG



DSC\_0478.JPG



DSC\_0479.JPG



DSC\_0480.JPG



DSC\_0481.JPG



DSC\_0482.JPG



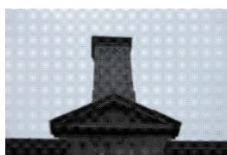
DSC\_0483.JPG



DSC\_0484.JPG



DSC\_0485.JPG



DSC\_0486.JPG



DSC\_0487.JPG



DSC\_0488.JPG



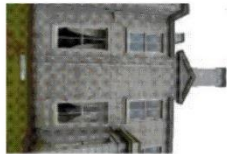
DSC\_0489.JPG



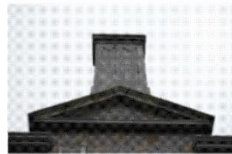
DSC\_0490.JPG



DSC\_0491.JPG



DSC\_0492.JPG



DSC\_0493.JPG



DSC\_0494.JPG



DSC\_0495.JPG



DSC\_0496.JPG



DSC\_0497.JPG



DSC\_0498.JPG



DSC\_0499.JPG



DSC\_0500.JPG



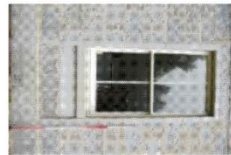
DSC\_0501.JPG



DSC\_0502.JPG



DSC\_0503.JPG



DSC\_0504.JPG



DSC\_0506.JPG



DSC\_0507.JPG



DSC\_0508.JPG



DSC\_0509.JPG



DSC\_0510.JPG



DSC\_0511.JPG



DSC\_0512.JPG



DSC\_0513.JPG



DSC\_0514.JPG



DSC\_0515.JPG



DSC\_0516.JPG



DSC\_0517.JPG



DSC\_0518.JPG



DSC\_0519.JPG



DSC\_0520.JPG



DSC\_0521.JPG



DSC\_0522.JPG



DSC\_0523.JPG



DSC\_0524.JPG



DSC\_0525.JPG



DSC\_0526.JPG



DSC\_0527.JPG



DSC\_0528.JPG



DSC\_0529.JPG



DSC\_0530.JPG



DSC\_0531.JPG



DSC\_0532.JPG



DSC\_0533.JPG



DSC\_0534.JPG



DSC\_0535.JPG



DSC\_0536.JPG



DSC\_0537.JPG



DSC\_0538.JPG



DSC\_0539.JPG



DSC\_0540.JPG



DSC\_0541.JPG



DSC\_0542.JPG



DSC\_0543.JPG



DSC\_0544.JPG



DSC\_0545.JPG



DSC\_0546.JPG



DSC\_0547.JPG



DSC\_0548.JPG



DSC\_0549.JPG



DSC\_0550.JPG



DSC\_0551.JPG



DSC\_0552.JPG



DSC\_0553.JPG



DSC\_0554.JPG



DSC\_0555.JPG



DSC\_0556.JPG



DSC\_0557.JPG



DSC\_0558.JPG



DSC\_0559.JPG



DSC\_0560.JPG



DSC\_0561.JPG



DSC\_0562.JPG



DSC\_0563.JPG



DSC\_0564.JPG



DSC\_0565.JPG



DSC\_0566.JPG



DSC\_0567.JPG



DSC\_0568.JPG



DSC\_0569.JPG



DSC\_0570.JPG



DSC\_0571.JPG



DSC\_0572.JPG



DSC\_0573.JPG



DSC\_0574.JPG



DSC\_0575.JPG



DSC\_0576.JPG



DSC\_0577.JPG



DSC\_0578.JPG



DSC\_0579.JPG



DSC\_0580.JPG



DSC\_0581.JPG



DSC\_0582.JPG



DSC\_0583.JPG



DSC\_0584.JPG



DSC\_0585.JPG



DSC\_0586.JPG



DSC\_0587.JPG



DSC\_0588.JPG



DSC\_0589.JPG



DSC\_0590.JPG



DSC\_0591.JPG



DSC\_0592.JPG



DSC\_0593.JPG



DSC\_0594.JPG



DSC\_0595.JPG



DSC\_0596.JPG



Photo no	Description	Facing	Camera point
DSC_0211	Inchgarth House SSE façade	NNW	1
DSC_0212	Inchgarth House SSE façade W22 (below) and 22A (above)	NNW	2
DSC_0213-5	Inchgarth House SSE façade cast iron drain pipe details	NNW	3
DSC_0216	Inchgarth House SSE façade W22 (left) granite block and cherry cocking detail	NNW	4
DSC_0217	Inchgarth House SSE façade W22	NNW	3
DSC_0218	Inchgarth House SSE façade W22 with Door D1 (left)	NNW	3
DSC_0219-20	SSE façade portico with ionic columns	WNW	2/5
DSC_0221-222	SSE façade portico with ionic column details	NW	5
DSC_0223-4	SSE façade Door D1 ext	NNW	6
DSC_0225	SSE façade Door D1 int	SSE	7
DSC_0226	Inchgarth House interior Room 1 D1 (right) W22 (left) wood panelling	SSE	8
DSC_0227	Room 1 W22	SSE	9
DSC_0228	Room 1 W11	ENE	9
DSC_0229-230	Room 1 NE wall fireplace F1 on interior from blocked up window W12	ENE	10

DSC_0231	Room 1 NE wall fireplace F1 Door D3 (left)	NE	7
DSC_0232-3	D3 interior door with leaded glass above	ENE	11
DSC_0234	D3	ENE	12
DSC_0235-37	W29 stained glass	SSE	12
DSC_0238	D3	ENE	12
DSC_0239-41	W24 stained glass	NNW	12
DSC_0242	D3 interior door with leaded glass above	WSW	12
DSC_0243	D3 interior door with leaded glass above with Room 1 and door leading to Room 2 (background)	WSW	12
DSC_0244-46	Room 4 parquet floor details	SSE/ENE/NNW	12
DSC_0247	Phase 2 stair 1 wooden panelling with Room 4 (right)	NNW	13
DSC_0248	Room 1 roof wood panelling and light fitting detail	NNW	13
DSC_0249	Room 1 roof wood panelling and light fitting detail	SSE	13
DSC_0250-52	Phase 2 stair 1 wooden panelling	NNW	14
DSC_0253	Room 1 wood panelling and door D6 to Room 2 (left)	NW	14
DSC_0254	Room 1 wood panelling and door D6 to Room 2 (centre)	WNW	14
DSC_0255	Room 1 wood panelling and door D5 to Room 2 (centre) and D1 (left)	SSW	14
DSC_0256-7	Room 1	SSW	14
DSC_0258-9	Room 1 detail of flooring adjacent to D1		
DSC_0260	Room 2 SE wall blocked door D2 (left) and W23 (right)	SSW	15
DSC_0261	Room 2 NE wall Door D5 (right) D6 (left)	E	15
DSC_0262	Room 2 NE wall Door D5 (right) D6 (left)	NE	16
DSC_0263	Room 2 NW wall	NW	17
DSC_0264	Room 2 SW wall	SW	18
DSC_0265-6	Room 2 Door D5 door fittings	ENE	19

DSC_0267	Light switches adjacent to D5 and Satchwell thermostat, The Rheostatic Co Ltd, Slough Type N No 10812 Automatic control for electric heaters, Patent 1948 in UK.	ENE	18
DSC_0268-70	Satchwell thermostat, The Rheostatic Co Ltd, Slough Type N No 10812 Automatic control for electric heaters, Patent 1948 in UK.	ENE	18
DSC_0271-3	Room 2 SW wall Fireplace F2 and details	WSW	20
DSC_0274-5	Room 2 Sw wall windows W7-W9 (r-l)		21
DSC_0276-82	Room 2 D6 and details of fittings and electric thermostat	ENE	22
DSC_0283-4	Room 2 NW wall skirting board electric fittings	NNW	15
DSC_0285-6	Room 2 Door D7 to Room 3	NNW	23
DSC_0287-8	Room 2 ceiling light fittings		
DSC_0289	Room 3 SSE wall with Door D7 (right)	SSE	24
DSC_0290	Room 3 WSW wall (W6 left W5 right)	WSW	25
DSC_0291	Room 3 ceiling light fitting	WSW	25
DSC_0292	Room 3 NW wall with fireplace F3 (centre)	NNW	26
DSC_0293	Room 3 ceiling light fitting	NNW	26
DSC_0294	Room 3 ceiling detail		25
DSC_0295	Room 3 ENE wall with Door D8	ENE	26A
DSC_0296	Room 3 radiator under W6	WSW	27
DSC_0297	D8 and view up Stair 1	ENE	28
DSC_0298-9	Stair 1	ENE	29
DSC_0300-301	View up Stair 1	NE	29
DSC_0302-5	Under stair 1 cupboard	NE/NNE/ENE	30
DSC_0306	View up Stair 1	E	30
DSC_0307	Corridor to Phase 2 extension	NNW	29
DSC_0308	Door D9	NNW	31
DSC_0309	Room 6 Window 14 interior partially blocked by Phase 2 stair 1	E	32
DSC_0310-320	Room 6 Window 14 details	ENE	33



DSC_0321-22	Room 5 bottom of Stair 1	SSE	31
DSC_0323	Corridor to Phase 2 extension	NNW	34
DSC_0324	D10 to Room 7	WSW	35
DSC_0325	Room 7 SE wall	SSE	36
DSC_0326	Room 7 SW wall with windows W4, W3, W2 (l-r)	WSW	37
DSC_0327	Room 7 NW wall with fireplace F4	NNW	38
DSC_0328-31	Room 7 NE wall and ceiling with ceiling light fitting detail	ENE	39
DSC_0332	Room 7 W4	SSW	39
DSC_0333	Room 7 W4, W3	SW	39
DSC_0334	Room 7 W3, W2	W	39
DSC_0335	Room 7 W2	WNW	39
DSC_0336	Room 7 Fireplace F4	NNW	40
DSC_0337	Room 7 D10	ENE	41
DSC_0338-344	Rooms 8-11 NW extension Phase 2-3		
DSC_0345	Phase 3 extension rear door		
DSC_0346-7	Window W19	NNW	42
DSC_0348	Phase 2 corridor from W19	S	43
DSC_0349	Window W19	N	43
DSC_0350-51	Stair 2	ESE	43
DSC_0352	First floor corridor to Phase 3 extension from top of Stair 2	NNW	44
DSC_0353	Room 13 W1A and fireplace F5	NW	45
DSC_0354	Room 13 Fireplace F5	NNW	46
DSC_0355	Room 13 NE wall	ENE	47
DSC_0356-7	Corridor to Phase 3 extension	NNW	48
DSC_0358-9	Rooms 14 and 15		
DSC_0360	Corridor from Phase 3 extension	SSE	49
DSC_0361	Stair 2 windows W21 (left) W20 (right)	E	50
DSC_0362	W20 (left) end wall Phase 1 and ladder to access loft	ENE	44
DSC_0363-64	Window W20	NE	51
DSC_0365	Chimney stack NW end Phase 2 above fireplace F4	NNW	52
DSC_0366	loft space	W	52
DSC_0367-9	Chimney stack on NW end Phase 1 above fireplace F3	SSE	52
DSC_0370	Top of stair 2	NW	53
DSC_0371	Corridor to Phase 1 first floor	SE	53

DSC_0372	Door 11	WSW	54
DSC_0373	First floor Room 12 SE wall	SSE	55
DSC_0374-5	First floor Room 12 WSW wall with windows W4A, 3A, 2A	WSW	56
DSC_0376	First floor Room 12 ceiling light fitting	WSW	56
DSC_0377	First floor Room 12 fireplace F6	SSE	57
DSC_0378	First floor Room 12 WSW wall with windows W4A, 3A, 2A	WSW	56
DSC_0379	First floor Room 12 NW wall	NNW	57
DSC_0380-1	First floor Room 12 NW wall	ENE	58
DSC_0382-4	Garden from W4A		
DSC_0385	First floor Room 12 Door D11	ENE	59
DSC_0386	First floor Room 16	ENE	60
DSC_0387	First floor corridor with stair 1 (left)	SSE	61
DSC_0388	First floor SSE end corridor D12 (right) arched doorway D13 (left)	S	62
DSC_0389	First floor Room 17 SW wall	WSW	63
DSC_0390	First floor Room 17 SE wall with Door D15	SSE	64
DSC_0391-2	First floor Room 17 light switches		
DSC_0393	First floor Room 17 Door D15 SE wall	SSE	65
DSC_0394	First floor Room 18 through Door D15	SSE	66
DSC_0395	First floor Room 18 SW wall	SSW	67
DSC_0396	First floor Room 18 SE wall	SSE	67
DSC_0397	First floor Room 18 SW wall fireplace F7	WSW	68
DSC_0398-400	First floor Room 18 window 9A with brick arched lintel replaced by wood lintel	WSW	69
DSC_0401	First floor Room 18 roof above W9A	WSW	69
DSC_0402	First floor Room 18 lath and plaster ceiling	SSE	69
DSC_0403	First floor Room 18 roof		
DSC_0404	First floor Room 18 D17 (centre) D16 (left)	ENE	67
DSC_0405-6	First floor Room 18 D17 (right) D16 (left)	NNE	70
DSC_0407	First floor Room 18 NNW wall with D16 (right)	NNW	70

DSC_0407	First floor Room 18 D17 (right) D16 (left)	NNE	71
DSC_0408	First floor Room 18 NE wall wallpaper detail	NE	71
DSC_0409-10	First floor Room 18 NE wall light switch	E	71
DSC_0411	First floor Room 18 NE wall SE of door D17	E	71
DSC_0412	First floor Room 18 W27	SE	72
DSC_0413	First floor Room 18 W23A	SE	73
DSC_0414	First floor Room 18 W10A	SW	73
DSC_0415	First floor Room 18 W9A	SW	69
DSC_0416	First floor Room 18 Door D17	NE	74
DSC_0417	First floor Room 19 W11A (left W22A (right)	E	75
DSC_0418	First floor Room 19 W11A (right) D18 (Left)	N	76
DSC_0419	First floor Room 19 NW wall D17 (left) D18 (right)	NNW	76
DSC_0420	First floor Room 19 W22A	SSE	77
DSC_0421	First floor Room 19 W11A	ENE	77
DSC_0422	First floor Room 19 W11A (right)	ENE	78
DSC_0423-4	First floor Room 19 light switch adjacent to W11A	ENE	79
DSC_0425	First floor Room 19 light switch and electricity heater control SE of Door D17	SW	75
DSC_0426	First floor Room 19 light switch		
DSC_0427	First floor Room 19 Door D18	NNW	80
DSC_0428	First floor Room 20 NE wall Windows W13A (left) 28 (right)	NNE	81
DSC_0429-30	First floor Room 20 W28	NE	81
DSC_0431	First floor Room 20 W13A	NNE	82
DSC_0432	First floor Room 20 SE wall W28 (left) D18 (centre) D14 (right)	SSE	82
DSC_0433-5	Room 4 extension from Window W13A	NE	
DSC_0436	Room 4 extension from Window W28	NE	
DSC_0437	Portico (Room 21) from window W22a	SSW	
DSC_0438	Portico (Room 21) from window W27	SE	
DSC_0439	Portico (Room 21) from window W223A	ESE	

DSC_0440	Room 18 NW wall	N	73
DSC_0441-3	Top of Stair 1 with Window W18	NNE	61
DSC_0444	Light fitting above Stair 1	NNE	61
DSC_0445-8	W18	NE	83
DSC_0450	Stair 1 wood details	SE	84
DSC_0451-2	W13	NE	84
DSC_0453	Stair 1 wood details	SE	84
DSC_0454-5	Stair 1	NE	29
DSC_0456	Portico Room 21 detail of ionic columns	S	6
DSC_0457	Portico Room 21 detail of ionic column capital	S	6
DSC_0458	SSE façade with portico Room 21 with ionic columns	NW	85
DSC_0459-62	SSE façade with portico Room 21 with ionic columns	NNW	86
DSC_0463	Garden wall 1	WSW	86
DSC_0464	Garden wall 1	W	87
DSC_0465	Garden wall 1	SW	88
DSC_0466-7	Garden wall 1 SE end planter	SW	89
DSC_0468	Garden wall 1 balustrade detail	SSW	90
DSC_0469-72	Inchgarth House SW aspect	NE	90
DSC_0473	Steps 1	WNW	91
DSC_0474	Steps 1	NNW	92
DSC_0475-6	Steps 1	SW	93
DSC_0477	Inchgarth House SW aspect	NE	93
DSC_0478	Steps 1 with Wall 1	WSW	94
DSC_0479	Steps 1 with Wall 1	SW	95
DSC_0480	Steps 1 with Wall 1	WSW	93
DSC_0481-2	Steps 1 with Wall 1	WNW	93
DSC_0483-4	Inchgarth House SW aspect	NE	93
DSC_0485	Inchgarth House SW aspect south end Phase 1 with chimney stacks	NE	96
DSC_0486	Inchgarth House Chimney 1 above W9A/10A	NE	97
DSC_0487	W10	NE	97
DSC_0488	Vent adjacent to W10	NE	98
DSC_0489	W9B	NNW	98
DSC_0490	W7 (left) 8 (middle) 9 (right)	ENE	99
DSC_0491	W6	ENE	100
DSC_0492	W6 (right) W5 (left)	ENE	101
DSC_0493	Gablet and Chimney 2 above W5/6	ENE	101
DSC_0494	W7B	SSE	102

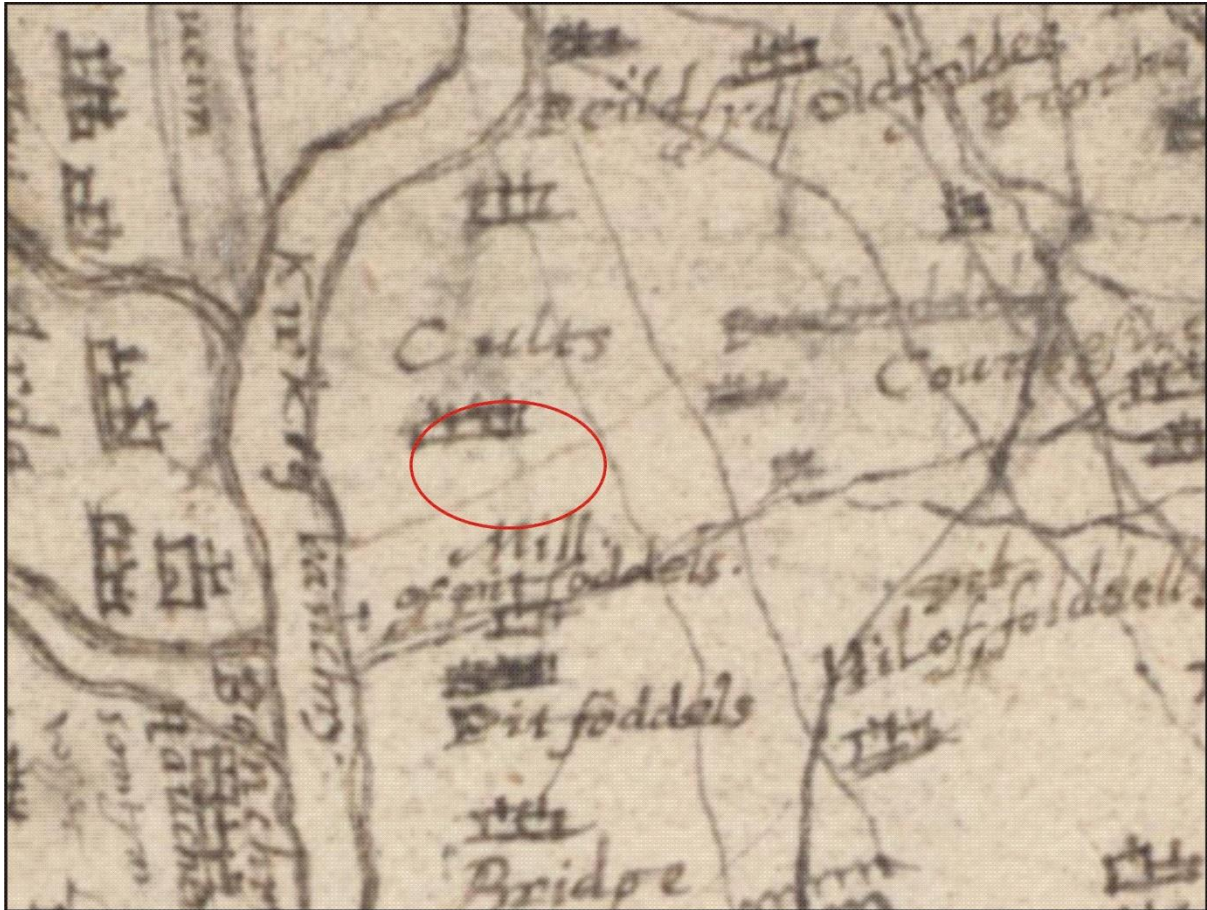
DSC_0495	W5 (right) bay window W4 (left)	N	103
DSC_0496	Bay window W2, W3, W4 (Phase 2)	ENE	104
DSC_0497	Phase 2 SW aspect	ENE	105
DSC_0498	Phase 2 (right) Phase 3 addition (left)	ENE	106
DSC_0499	Phase 2 (right) Phase 3 addition (left)	ENE	106
DSC_0500	Phase 2 roof and chimney stacks	ENE	106
DSC_0501	Bay window W2, W3 (Phase 2)	E	107
DSC_0502-3	Vents adjacent to W1	ENE	108
DSC_0504	W1	ENE	109
DSC_0506	Phase 3 NW extension	ENE	110
DSC_0507	SW aspect	ESE	111
DSC_0508	Remains of sculpture		111
DSC_0509	SW aspect	ESE	111
DSC_0510	W25	ESE	112
DSC_0511	W26	ESE	113
DSC_0512	NW gable Phase 3 addition	SW	114
DSC_0513	Walled drive	NE	114
DSC_0514	Phase 3 extension (right) Phase 2 (left)	SW	115
DSC_0515-6	Phase 3 extension (right) Phase 2 (left)	SSW	115
DSC_0517	Phase 3 extension NE wall	WSW	116
DSC_0518	Phase 3 extension (right) Phase 2 (left)	SW	116
DSC_0519	Door D19	SSE	117
DSC_0520-22	Window W19	SSE	118
DSC_0523	Phase 3 extension (right) Phase 2 (left) roofs	SW	116
DSC_0524-27	Room 22 Phase 2 kitchen NW wall (left)	SSE	119
DSC_0528-9	Room 22 Phase 2 kitchen NE wall Window W15	WSW	120
DSC_0530	Room 22 Phase 2 kitchen NE wall vent under W15	WSW	121
DSC_0531	Room 22 Phase 2 kitchen	WNW	122
DSC_0532	Room 22 Phase 2 kitchen (right) Phase 1 door D3 (left)	W	122
DSC_0533	Room 22 Phase 2 kitchen Door D20	WSW	123
DSC_0534-7	W14 and W18 (above)	WSW	124
DSC_0538-41	W13 and W13A (above)	WSW	125

DSC_0542-3	W24	WSW	125
DSC_0544-49	Door D3 with gablet and light fitting (above)	WSW	126
DSC_0550-51	Inchgarth House NE façade	WSW	127
DSC_0552-3	Inchgarth House NE façade	W	128
DSC_0554	Door D3 light fitting	WSW	126
DSC_0555	Window W29	NNW	127
DSC_0556-57	Window W29	NNW	128
DSC_0558-60	Phase 1 NE façade SE end with W11 and w12	NNW	129
DSC_0561-2	W12 and 12A above	NNW	130
DSC_0563	Vent between W11 and W12	NNW	127
DSC_0564-5	W11 and 11A above	NNW	131
DSC_0566	Vent adjacent to W11	NNW	131
DSC_0567-8	Portico Room 21	NNW	133
DSC_0569-71	Inchgarth House SW façade	NW	85
DSC_0572-78	Inchgarth House SW façade	NNW	1
DSC_0579-80	W22 and 22a above	NNW	3
DSC_0581	Portico roof	WSW	3
DSC_0582-3	Door 1	NNW	6
DSC_0584-5	Door 1 (right) and blocked door D2 (left)	NNW	133
DSC_0586	D2	NNW	134
DSC_0587	Light fitting in portico ceiling		134
DSC_0588-91	Cast iron drain pipe with W23 (left)	NNW	135
DSC_0592-3	W23 and 23a above	NNW	136
DSC_0594	Portico	ENE	137
DSC_0595	Inchgarth House SW façade	NE	138
DSC_0596-7	Inchgarth House SW façade	NNE	138
DSC_0598	Room 22 Phase 2 kitchen	NE	139
DSC_0599-600	Room 22 Phase 2 kitchen	NNE	140
DSC_0601	Room 22 door D20	NNE	141
DSC_0602	Room 22 window W15	SSE	141
DSC_0603	Room 22 door	ENE	141
DSC_0604	Window W24	S	140
DSC_0605-6	Room 22 central chimney flue	NW	142
DSC_0607-8	Room 22 ceiling	SW/NE	142
DSC_0609-10	Room 22 floor		
DSC_0611	Wood floor at entrance to Room 22 from hallway	WSW	139

## APPENDIX 2 MAPS AND OLD PHOTOGRAPHS

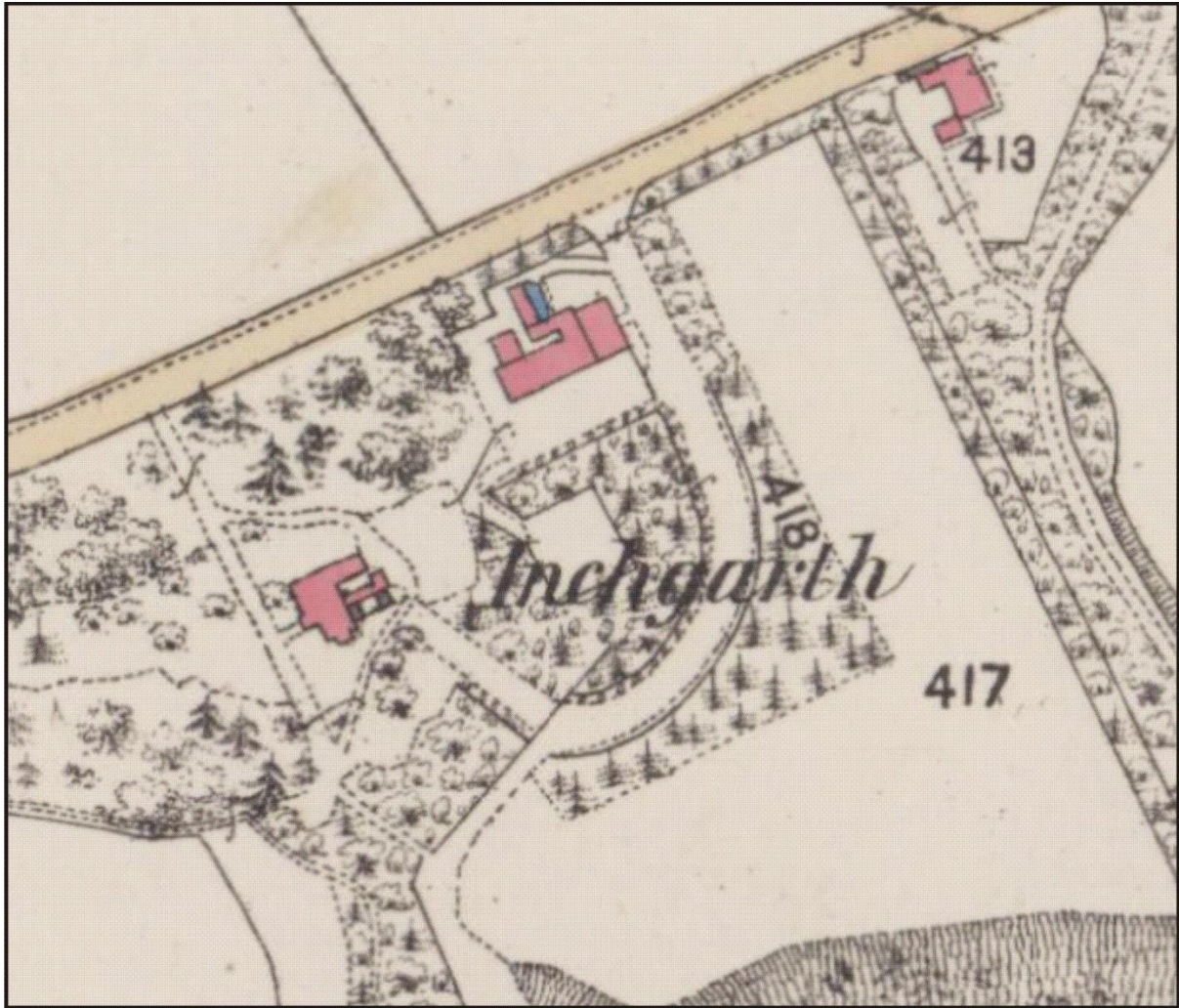


Illus 23 Roy Military Survey of Scotland 1747-55 with approximate area of Inchgath House circled in red (copyright National Library of Scotland)

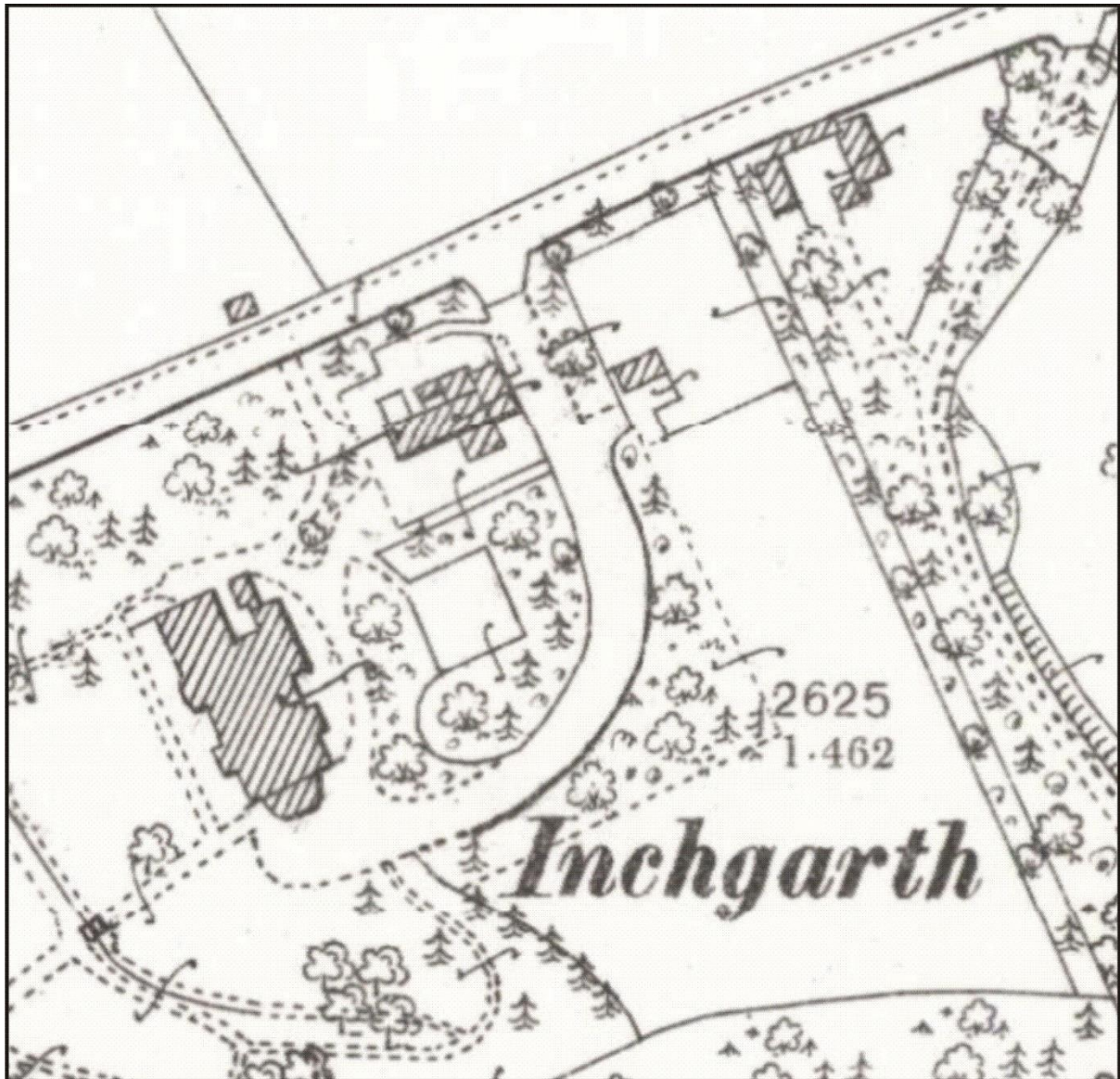


Illus 24 Pont 1583-96 with approximate area of Inchgarth House circled in red (copyright National Library of Scotland)

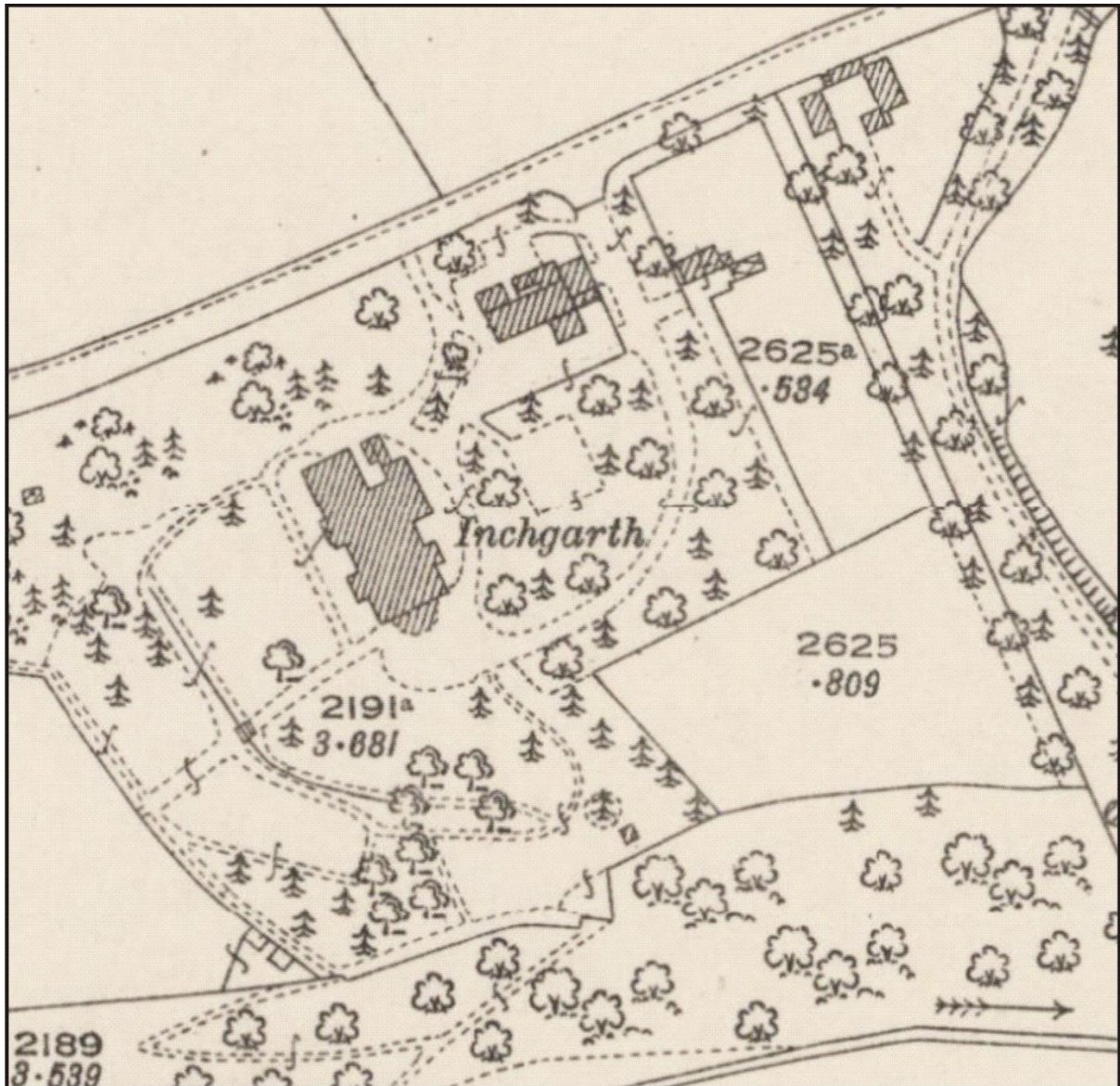




Illus 25 First Edition OS map Kincardine Sheet IV.5 (Combined)  
Survey date: 1865 Publication date: 1868 (*copyright National Library of Scotland*).



Illus 26 Second Edition OS map. Aberdeenshire 086.02 (includes: Aberdeen; Banchory-Devenick; Nigg; Peterculter) Publication date: 1901 Revised: ca. 1899 (*copyright National Library of Scotland*).



Illus 27 3<sup>rd</sup> edition OS map. Aberdeenshire 086.02 (includes: Aberdeen; Banchory-Devenick; Nigg; Peterculter) Publication date: 1925 Revised: ca. 1923 Levelled: 1899



Illus 28 1975-76 photograph of SW façade, Inchgarth House (copyright RCAHMS; A16869)



Illus 29 1975-76 photograph, view from north, Inchgarth House (copyright RCAHMS; A16870)



Illus 30 1975-76 photograph, view from north east, Inchgarth House (copyright RCAHMS; A16871)

### APPENDIX 3 FEATURES RECORDED IN THIS SURVEY

Feature no	Description	Size
W1	Phase 2 Room 8	1.2 x 2.35m (originally 0.75m taller)
W2, W3, W4	Phase 2 Room 7	1.15m wide, 2.7m high (originally 0.45m taller)
W5, W6	Phase 1, Room 3	1.2m wide, 2.7m high (originally 0.45m taller)
W7, W8, W9	Phase 1 Room 2 bay extension	1.05m wide, 2.7m high (originally 0.45m taller)
W10, W23	Phase 1 Room 2	1.2m wide, 2.7m high (originally 0.45m taller)
W22, W11	Phase 1 Room 1	1.2m wide, 2.7m high (originally 0.45m taller)
W12 and 12A	Phase 1 Room 1 blocked with granite and cherry cocking possibly in Phase 2	1.2m wide, 2.7m high (originally 0.45m taller)
W13	Phase 1 Stair 1, partially covered by balustrade for Stair 1; stained glass	1.2m wide, 2.7m high (originally 0.45m taller)
W14	Phase 1 Room 6, partially covered by Stair 1; stained glass	1.2m wide, 2.7m high (originally 0.45m taller)
W15	Phase 2 kitchen	
W16	Phase 2, Room 11	
W17	Phase 3 Room 10	
W18	Phase 1 first floor Stair 1; stained glass	1.2m wide, 2.7m high
W19	Phase 2 NW wall Stairway 2; stained glass	1.2m wide, 2.6m high
W20	Phase 1 Stair 1 first floor; stained glass	0.5m wide, 0.7m high
W21	Phase 1 Stair 1 first floor; reglazed	0.5m wide, 0.7m high
W22	Phase 1 ground floor Room 1	1.2m wide, 2.7m high
W23	Phase 1 ground floor Room 2	1.2m wide, 2.7m high
W24	Phase 1 ground floor Room 4 part of main entrance NE façade; stained glass	0.6m wide, 2.5m high
W25	Phase 3 extension	
W26	Phase 3 extension	
W27	Phase 1 Room 18 first floor window above portico Room 21	
W28	Phase 1 above Door D3	
W29	Phase 1 ground floor Room 4 part of main entrance NE façade; stained glass	0.6m wide, 2.5m high
D1	Phase 1 Room 1 exit to portico Room 21	1.5m wide, 2.5m high
D2	Phase 1 Room 2 former exit to portico Room 21; blocked with granite blocks and cherry cocking possibly in Phase 2	1.5m wide, 2.5m high
D3	Phase 1 original main entrance on NE façade; modern wooden interior door;	
D4	Phase 3 door NE wall	
D5	Main double door between Rooms 1 and 2	
D6	Door between Rooms 1 and 2	
D7	Door between Rooms 1 and 3	
D8	Door between Rooms 2 and 5	
D9	Door between Rooms 5 and 6	
D10	Door between Rooms 7 and Stair 2	
D11	Door between Rooms 12 and Stair 2	
D12	Door between Rooms 7 and first floor corridor	
D13	Doorway between Rooms 23 and first floor corridor	
D14	Door between Rooms 20 and first floor corridor	

D15	Door between Rooms 17 and 18	
D16	Doorway between two halves Room 23; possibly top of Phase 1 stairway (now removed in Phase 2)	
D17	Door between Rooms 19 and 23	
D18	Door between Rooms 19 and 20	
D19	Exterior door with steps Phase 2; porch added in later phase	
D20	Phase 2 kitchen Room 22 door with steps	
Stair 1	Phase 2 dark wood stair	
Stair 2	Phase 2-3 back stair	
Chimney 1	Phase 1 Double chimney stack above fireplace 2	
Chimney 2	Phase 1 Double chimney stack above fireplace windows 5/6 – fireplace blocked and wood panelled	
Chimney 3	Phase 1 triple chimney stack above fireplace F3	
Chimney 4	Phase 1 triple chimney stack above door 3	
Chimney 5, 6	Phase 2 plain chimney stacks	
Fireplace 1	Room 1 NE wall	
Fireplace 2	Room 2 SW wall	
Fireplace 3	Room 3 NW wall	
Fireplace 4	Room 7 NW wall	
Fireplace 5	Room 13 NW wall	
Fireplace 6	Room 12 SE wall	
Fireplace 7	Room 18 SW wall	

## APPENDIX 3 POST OFFICE DIRECTORY ENTRIES

Date	Details
1867-8	George Skene Tayler of Inchgarth, 69 Crown St  Inchgarth, a dwellinghouse on the north bank of the river Dee, about 3 miles from town, by North Deeside Rd
1869-70	George Skene Tayler of Inchgarth, 69 Crown St  Described as a 'mansion'
1870-1 - 1878-9	As above
1880-1	George Skene Tayler of Inchgarth  James Murray, salmon fisher, Inchgarth, Cults, h(ome) 22 Holburn Rd
1880-1 - 1881-2	As above
1882-3	As above J Murray moved to 45 Broomhill Pl
1884-5	As above
1885-6	Tayler only
1886-7 - 1887-8	As above
1888-9	No entry
1890-1	Tayler only
1891-2 – 93-4	As above
1894-5	Mrs George S Tayler
1895-6	Henry F Begg (Lochnagar Royal Distillery), Inchgarth, Cults, telephone No 822
1896-7	John Begg, Distiller (to the Queen HRH the Prince of Wales and Duke of Edinburgh), Lochnagar Telephone No 581, office 17 Weight-house Square, h(ome) Inchgarth, Cults telephone No 822
1897-8	W.R Reid, advocate, Union Chambers, 46A Union St, Telephone no 535, h(ome) telephone No 822  George Taylor, gardener, Raeden and Inchgarth, h(ome) Raeden, Mid Stocket Rd
1898-9	As above
1899-1900	As above



	G Taylor Inchgarth address only Telephone no now Cults 22 (Cults now has own exchange)
1900-1 – 1902-3	W R Reid only
1903-04	John Graham, grain merchant
1904-5 – 1910-11	John Graham, grain merchant (of Grant and Co)
	No further PO directories consulted

E, Advocates,

The lands pleasantly situated within about two miles of Aberdeen, will be exposed at the Upset Price of £678 Sterling.

For further particulars, application may be made to ARCHIBALD BORTHWICK, Esquire, C.A., 5, North St David Street, Edinburgh, the Trustee; or to Messrs DAVIDSONS & COOPER, Aberdeen, with whom are the Title Deeds, Plans, and Articles of Roup.

ESTATE of

consisting of Arable, and inmas, 1861. is Farm the BALBRIDIE, R. 28 P. are

occupied by ces are to be sist of 76 A. asture. The ion with the Whitsunday,

en; extend- is, will show be desired. rs J. & G. fore SATUR-

state are on a Lease ssessed by Arable, or

enson, and CHRIS. table offers

ted, being dy's Bridge

OUTTS, Seli- twixt and

### LANDS AND ESTATE OF INCHGARTH.

#### UPSET PRICE REDUCED.

There will be exposed for Sale, by Public Roup, on MONDAY the 3d day of September, 1860, within the Chambers of Messrs DAVIDSONS & COOPER, Advocates, No. 7, Union Terrace, Aberdeen, at Two o'clock Afternoon,

**T**HE LANDS and ESTATE of INCHGARTH, part of the Barony of Pitfoddels, in the Parish of Banchory-Devenick, and County of Aberdeen, and forming part of the Sequestered Estate of Anthony Adrian Blaikie, Advocate in Aberdeen, and now to be Sold by his Trustee, with concurrence to be specified in the Articles of Roup,

All and Whole the LANDS and ESTATE of INCHGARTH, with the Pertinents, containing 86½ Acres Imperial Measure or thereby, at the Reduced Upset Price of £1000 Sterling,

subject to an annual Feu-duty of £226 Sterling, or thereby.

This Property is pleasantly situated on the banks of the Dee, within Ten Minutes' walk of the Cults Station of the Deeside Railway, and about Three Miles from Aberdeen by the old Deeside Road, which affords easy access to the Property. The Haugh Land along the river Dee extends to Fifty-Nine and a Half Acres of superior quality, with a substantial embankment to protect it from floods of the River. The Upper Land is tastefully laid out, and commands beautiful and extensive views of the valley of the Dee and higher range of the Grampian Mountains.

Within the past few years there have been built on the high land, a neat Cottage of Two Floors, a most commodious Farm Steading, with Grieve's House, sufficient for a Farmer, and Farming the whole Land, with good accommodation for servants, and Gardener's Lodge at the Garden.

The Plantations are thriving, and, along with the finely-wooded bank overlooking the Haugh, are very ornamental, and in a few years will add much to the amenity and beauty of the place, and make it a very desirable residence.

For further particulars apply to ARCHIBALD BORTHWICK, Esq., C.A., 5, North St. David Street, Edinburgh; or to Messrs DAVIDSONS & COOPER, Aberdeen, with whom are the Plans, Articles of Roup, and Titles.

### O R K N E Y.

the as place by the tion o Gener his an the C annex Coun again

PA only repre cers t altho Th publi Th bald lery It by p pect

Th 31st "I state every have is be stru the obst of th the the imp form acts in t by c was the mer dru poli bei aga is n the fica

Illus 31 Newspaper cutting 1860 announcing roup of Inchgarth House

intow, has  
of LAUCH-  
Aberdeen,  
may be im-

ar, and  
Fifteenth  
favour of  
nant, both  
se having  
the Lodge  
debted to  
by them,  
rustees.

about  
slightly  
never will  
ed.

rawing  
l Cellar-  
yards of

HILL,  
may be

National

DEN,  
Skene,

One Blue Work Mare, 7 years old, and one Pure Aberdeen  
Cow, with Bull Calf at foot; Two Polled Cows; One Pure Short-  
horned Cow, with Cow Calf at foot; One one-year-old Pure  
Shorthorned Quey; One Cross Cow, with Calf at foot; Two one-  
year-old Queys; One two-year-old Stot.

IMPLEMENTS—Two Box Carts, with Frames, complete; Two  
Sets Cart Harness; Patent Metal Wash Cart; Stone and Wood  
Rollers; Iron Ploughs and Harrows; Iron Grubber; Turnip-  
Sowing Machine; Patent Turnip-Cutter; Barn Fan; Threshing  
Floor; Riddles; Graips, Forks, Scythes, and Barrows; Corn  
Sacks; Cheese Presser; Horse Clothing; Bridles; Riding Sad-  
dle; Hen Coops; Sheep Haik; Dairy Utensils; and a number  
of other Articles.

Sale to begin at Eleven o'clock forenoon; and Credit will be  
given on Security.

ALEX. MASSON,

115, Union Street, 18th Sept., 1860.

\*\* The Pedigrees of the Pure Stock will be shown by the  
GRIEVE at Inchgarth.

SALE OF  
**HOUSEHOLD FURNITURE,**  
AT INCHGARTH, PITFODELS.

On WEDNESDAY the 10th October, there will be Sold; by Public  
Roup, at INCHGARTH, Pitfodels,

**A**N Assortment of **HOUSEHOLD FURNITURE,**  
&c., consisting of a Walnut Loo Table; Rosewood Work  
Table; Mahogany Writing Table; Oak Hat and Umbrella  
Stand; Small Mahogany Table; Grand Pianoforte, in Mahogany;  
Upright Barometer; Moderator Lamp; Iron Crib Bedstead;  
Tables and Chairs; China, Glass, and Stoneware; Fenders and  
Fire-irons; Carpets, Oilcloth, and Mats; Kitchen and Cooking  
Utensils; and a number of other Articles.

Also, a Garden Engine, Garden Tools, &c.

Sale to begin at Twelve o'clock noon.

ALEX. MASSON.

115, Union Street, 18th Sept., 1860.

SALE OF  
**Violins, Accordions, Double Bass Violincello,**  
**AND OTHER MUSICAL INSTRUMENTS.**

Upon **MONDAY** the 24th September, there will be Sold, by Auc-  
tion, within the **UNION BRIDGE SALE-ROOMS,**

**THE STOCK-IN-TRADE** belonging to the Estate  
of **GEORGE THOMSON,** Musical Instrument Maker,  
George Street, consisting of Concertinas, a great variety of Ac-

Illus 32 Newspaper cutting announcing roup at Inchgarth House, 18 September 1860

ally to pro-  
ty Warehouse.

Immediately.  
stants.)—Mrs

ng Works :  
ling.—A. & M.

Wanted, for  
r.—Gordon &

ted immedi-  
on.—Apply A.

anted, term,  
ondon, imme-  
eld's Registry,

oly Watt &

oly to Pratt

. Assistants.  
ne, 172 Union

, Learners.  
ne, 172 Union

. Smart, 14

Housemaid.

17.—Apply

sewerk, age  
t.

ars of age, to  
tern Road.

, to attend  
.—Apply Hay,

apers, Morn-  
n French. No. 4

deen, consisting of two Floors, each containing three  
apartments, with all necessary conveniences. Entry  
will be given at Whitsunday next. Feu-duty, £2 9s.  
Upset price, £320.

The Title Deeds may be seen, and further information  
obtained, on application to Messrs STRONACH.

**BEAUTIFULLY-SITUATED RESIDEN-  
TIAL PROPERTY ON LOWER DEESIDE,  
WITH SALMON FISHING IN RIVER DEE, FOR  
SALE.**

There will be Exposed to Sale, by Public Roup,  
within the Writing Chambers of Mr W. R. REID, Advocate,  
46A Union Street, Aberdeen, on FRIDAY, the 2nd day of  
October, 1896, at Two o'clock P.M.,

The RESIDENTIAL ESTATE of INCHGARTH, situ-  
ated on the north bank of the River Dee, and within  
three miles of Aberdeen.

It extends to 94 Acres or thereby, of which 72 Acres  
are Arable, and 22 Acres Policies, Pasture, Woodlands,  
&c. The Pitfodels Station of the Deeside Railway is  
within five minutes' walk, and the Cults Station is  
within one mile from the Mansion-House.

The House commands a fine view of the Dee Valley,  
and contains Entrance Hall, large Double Drawing-  
Room, Dining-Room, Business Room, Billiard Room, 9  
Bedrooms, Store Room, Butler's Pantry, Kitchen, 2  
Bathrooms, 4 W.C.'s, etc., and ample Servants' Accom-  
modation. The House is lit throughout by the Electric  
Lght, and supplied by a hot and cold water circulation.  
The whole of the interior of the Mansion House was de-  
corated quite recently.

There are Entrance Lodge, Stables, and Coach-House,  
all in good order, adjoining, and also a well-stocked  
Garden, extending to nearly 2 acres, with Gardener's  
House.

The Farm-House and Steading of Offices, about 1/2 mile  
distant from the Mansion House, are suitable for the  
Farm, and were all recently overhauled. The Arable  
Land would let very readily for dairy purposes.

The Salmon Fishings extend to 2 miles or thereby of  
the River Dee.

The feu-duties and casualties have been redeemed.

Entry will be at Whitsunday, 1897.

Upset Price, £13,000.

Cards to view and all other information, can be  
obtained on application to Mr W. R. REID, in whose  
hands are the Titles and Articles of Roup.

Aberdeen, 8th September, 1896.

**T**HERE will be Exposed to Public Roup,  
within Messrs MACQUEEN & KNOX'S CHAMBERS,  
34 Bridge Street, Aberdeen, on THURSDAY, 15th Octo-  
ber, 1896, at Two o'clock P.M.

Letters

W

W

W

Office.

M

PA

GRANT  
or POL  
Value  
applic  
part of

G

Granit  
paone

G

Prices.  
397 and

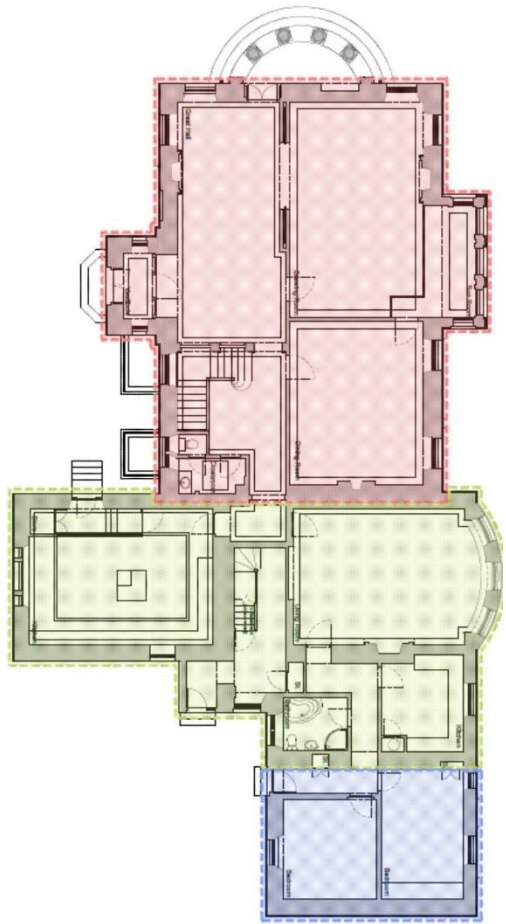
P

upwar  
King  
WILLI  
deer

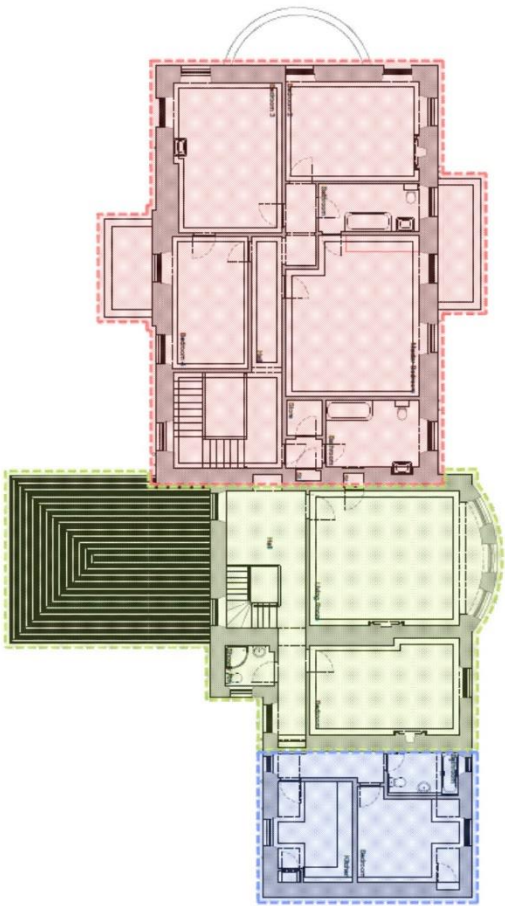
LUN

EN

Illus 33 Newspaper cutting announcing roup of Inchgarth House, 8 September 1896



Existing Ground Floor Plan



Existing First Floor Plan



**Historical Key**

- Assumed Original 1869 Dwelling
- Assumed Extension Circa 1897
- Assumed Extension - unknown date (Possibly when the property was split into 1 dwelling and 2 apartments)

Please see the Standing Building Survey report by Cameron Archaeology for further detailed information.

REV	DESCRIPTION	DATE	BY

**CAMERON**  
**ARCHAEOLOGY**

ARCHAEOLOGICAL CONSULTANTS, HISTORICAL ARCHITECTURE AND ILLUSTRATION  
172 ROSS STREET, ABERDEEN AB9 1LW  
TEL: 01224 626228  
WWW.CAMERONARCHAEOLOGY.CO.UK

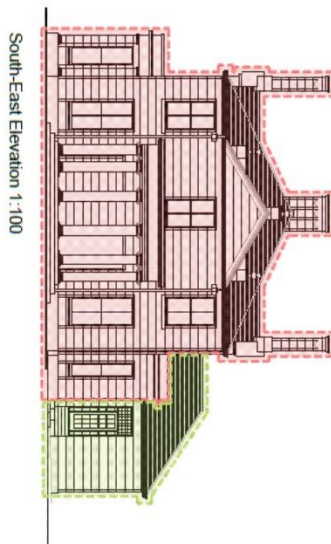
Project Name: Inchgarth Road, Inverurie



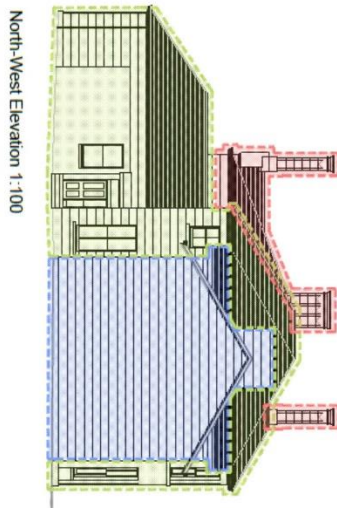
North-East Elevation 1:100



South-West Elevation 1:100



South-East Elevation 1:100



North-West Elevation 1:100

**Historical Key**

- ▭ Assumed Original 1859 Dwelling
- ▭ Assumed Extension Circa 1897
- ▭ Assumed Extension - unknown date (Possibly when the property was split into 1 dwelling and 2 apartments)

Please see the Standing Building Survey report by Cameron Archaeology for further detailed information.