

**Corgarff Parish Church, Corgarff, Strathdon,
Aberdeenshire, AB36 8YL**

Report on Level 1 Standing Building Survey



**Alison Cameron
Cameron Archaeology
5 August 2015**

CONTENTS

1	INTRODUCTION	3
2	THE LEVEL 1 STANDING BUILDING SURVEY	4
	Phase 1.....	4
	Phase 2.....	9
3	RECOMMENDATIONS.....	12
4	ACKNOWLEDGEMENTS	12
5	REFERENCES	12
	APPENDIX 1 MAPS.....	13
	APPENDIX 2 PHOTOGRAPHS	15

ILLUSTRATIONS

Cover: Top: church from the NW. Bottom detail of bell-cote above NNW gable

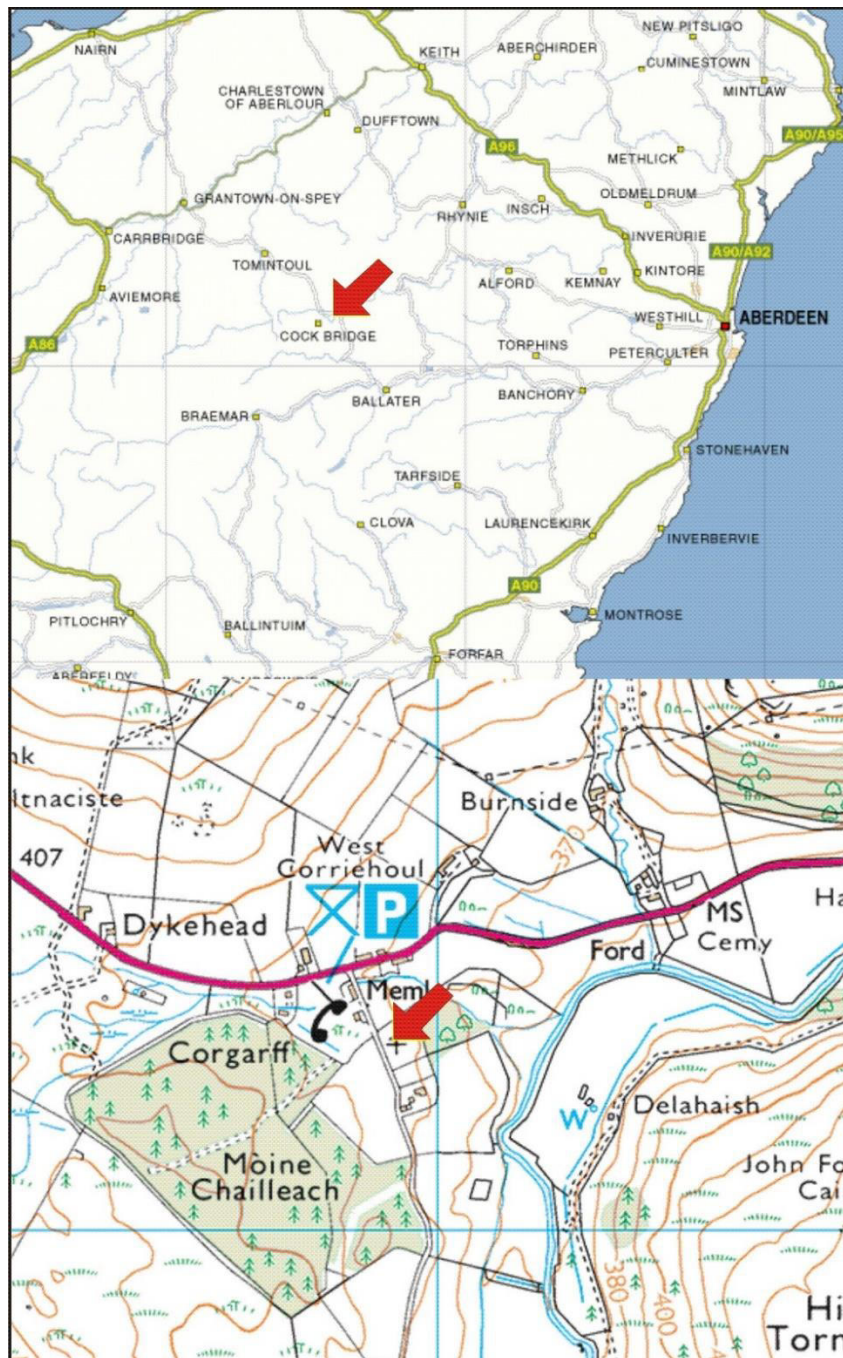
Illus 1	Location plan	3
Illus 2	Ground floor plan annotated with survey numbers	4
Illus 3	First floor plan annotated with survey numbers	5
Illus 4	NNW elevation annotated with survey numbers.....	5
Illus 5	ENE elevation annotated with survey numbers	6
Illus 6	SSE elevation annotated with survey numbers	6
Illus 7	WSW elevation	7
Illus 8	NNW gable with central door (1) first floor window (W2)	7
Illus 9	ENE wall with windows W4 (right), W5, W6 and W7	8
Illus 10	Pulpit (centre) with W5 (left) and W6 (right); facing ENE.....	8
Illus 11	Pulpit (left) and supports for gallery; facing SSE	9
Illus 12	Gallery bisecting window W7; facing ENE.....	10
Illus 13	Window W7 lower section below gallery	10
Illus 14	Gallery from the pulpit; facing WSW	11
Illus 15	Detail of older light fittings (?gas) and modern light fittings.....	11
Illus 16	Former location of stove	12
Illus 17	First Edition OS map.....	13
Illus 18	Second Edition OS map.....	14
Illus 19	Camera points used in this survey: exterior	15
Illus 20	Camera points used in this survey: interior ground floor.....	16
Illus 21	Camera points used in this survey: interior first floor	17

SUMMARY

A Level 1 standing building survey was carried out on 31 July 2015; the weather was clear and bright. All interior and exterior walls and features were recorded photographically and architects plans and elevations were checked and annotated. It is recommended that no further archaeological work is required during this current development.

1 INTRODUCTION

- 1.1 The site (Illus 1) is located on the south side of the A939 Strathdon to Tomintoul road and is adjacent to the Corgarff Community Hall and the war memorial. It is centred on NGR NJ 27931 08315, at 380-390m OD (Illus 1) and in the parish of Strathdon.
- 1.2 The work was commissioned by Mr Jamie Home. A planning application (APP/2015/1095) for conversion of church to dwellinghouse was approved by Aberdeenshire Council on 29 May 2015 with an archaeology condition (Condition 1). Aberdeenshire Council Archaeology Service require a Level 1 standing building survey.
- 1.3 All the archaeological work was carried out in the context of Scottish Planning Policy (SPP) Planning Advice Note (PAN 2/2011) and Scottish Historic Environment Policy (SHEP), which state that archaeological remains should be regarded as part of the environment to be protected and managed.



Illus 1 Location plan (Contains Ordnance Survey data © Crown copyright and database right 2015)

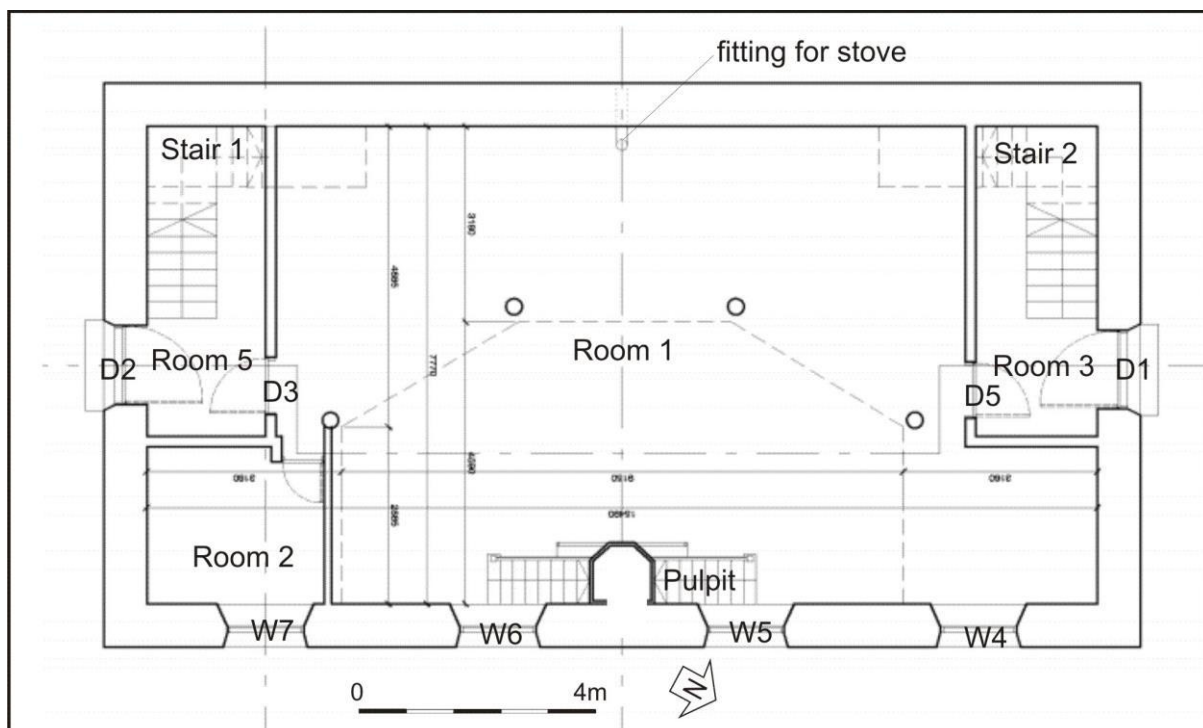
2 THE LEVEL 1 STANDING BUILDING SURVEY

The Level 1 standing building survey was carried out on 31 July 2015. Architects plans and elevations were utilized (Illus 2-7) and a full interior and exterior photographic survey was carried out.

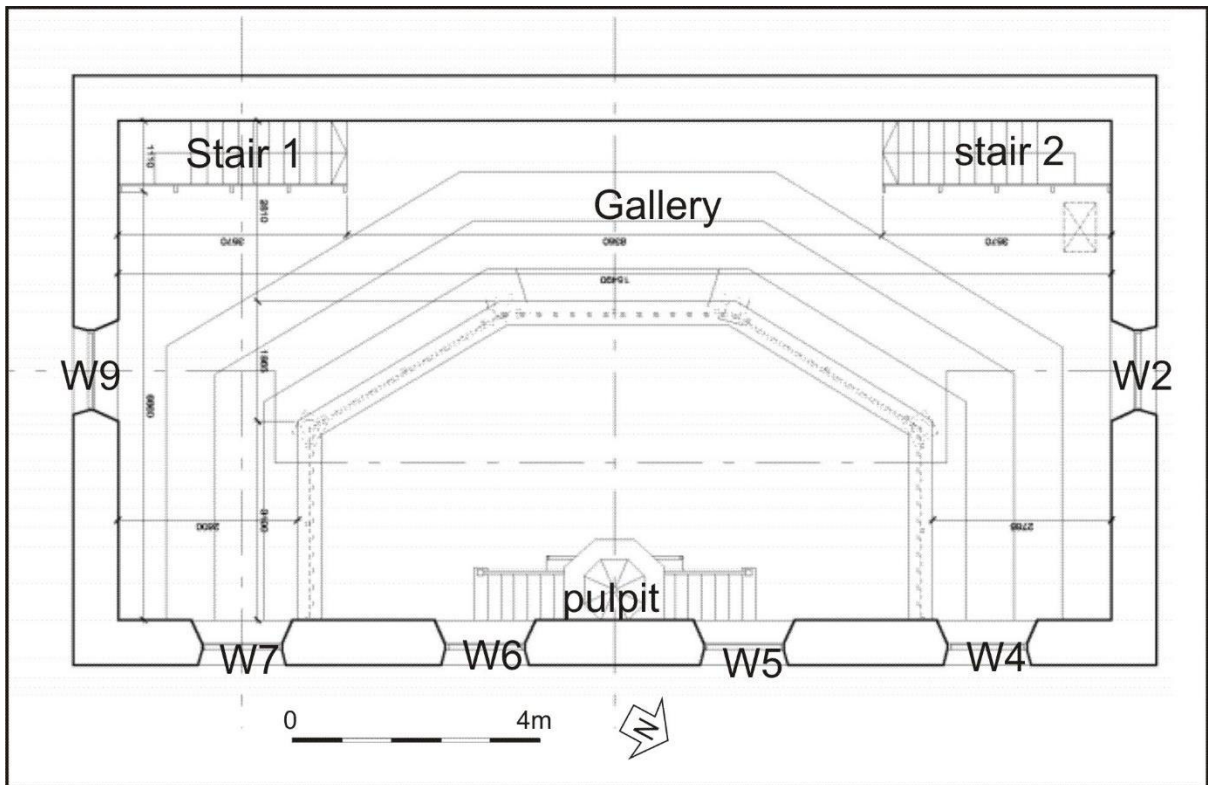
The church is the former Corgarff Church of Scotland (NJ20NE 38). It is listed category B (ref 16176). The architect was Mr Daniel in 1834-5. It is a rectangular-plan church with 4-bay nave, pinnacled bellcote with bell and galleried interior. Squared and coursed rubble with contrasting pink granite long and short quoins and margins (Shepherd 2006). Granite ashlar base course. Decoratively-astragalled, voussoired, pointed arch windows and transom lights, chamfered reveals. The gable elevations to N and S each with centre bay comprising 6-panelled 2-leaf timber door and transom light below similar triangular window, flanking square headed lights blocked; bellcote to N gable. E elevation with 4 large windows. On the interior there is a fine little altered interior with pulpit at centre of E wall and 5-sided gallery (running E-W) on Greek Doric columns. Simple box pews, panelled gallery and decorative cast iron oil lamp fittings. Pulpit with flanking steps, and 5-sided ogee capped sounding board. There was a small (later) pipe organ fronting the pulpit which has since been removed. The parish of Corgarff was disjoined from Strathdon and Tarland on 9th March, 1874 and the last service was held in 2005 (HS Listed Buildings information online).

Phase 1

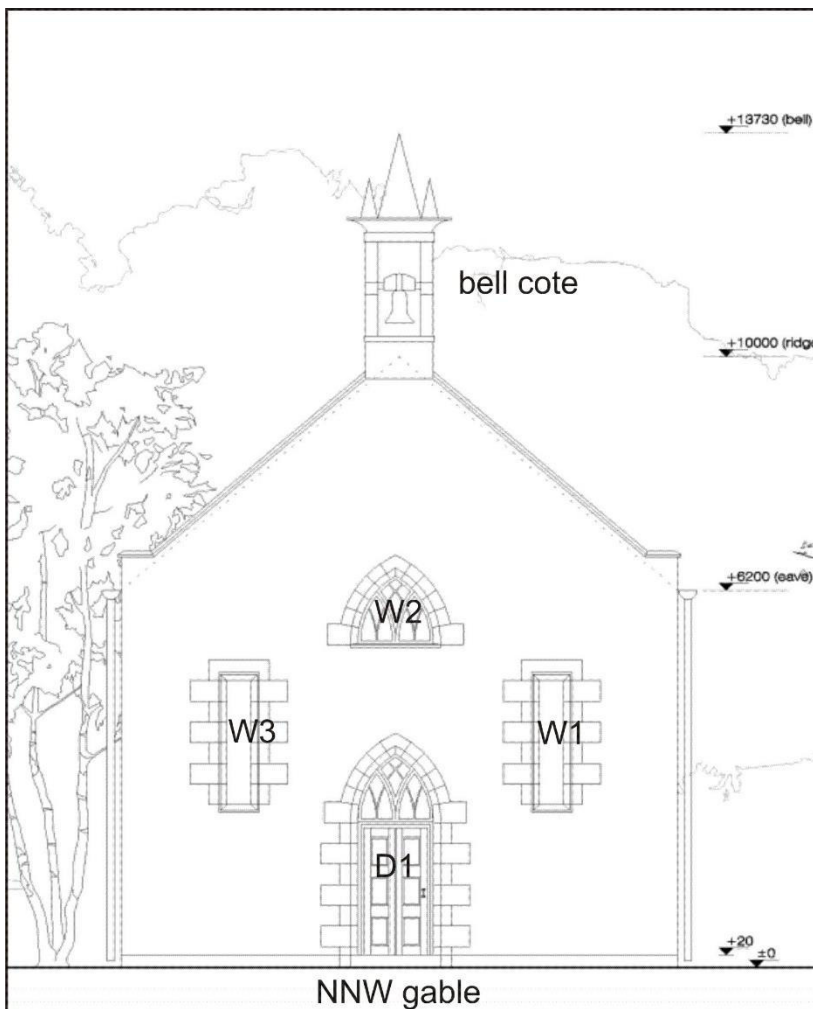
The church is oriented NNW-SSE and is 9m wide and 17.15m long with a granite base course 0.05m wide on all sides. The walls are 0.7m thick. There are no apertures on the WSW wall and 4 long pointed windows on the ENE wall (W4-W7). The gables have central pointed arched doors with smaller arched windows above (W2 and W9) and on either side of the door is a long narrow window 2.15 x 0.4m in size all of which are now blocked (W1/3, W8/10). There is a bell-cote above the NNW gable.



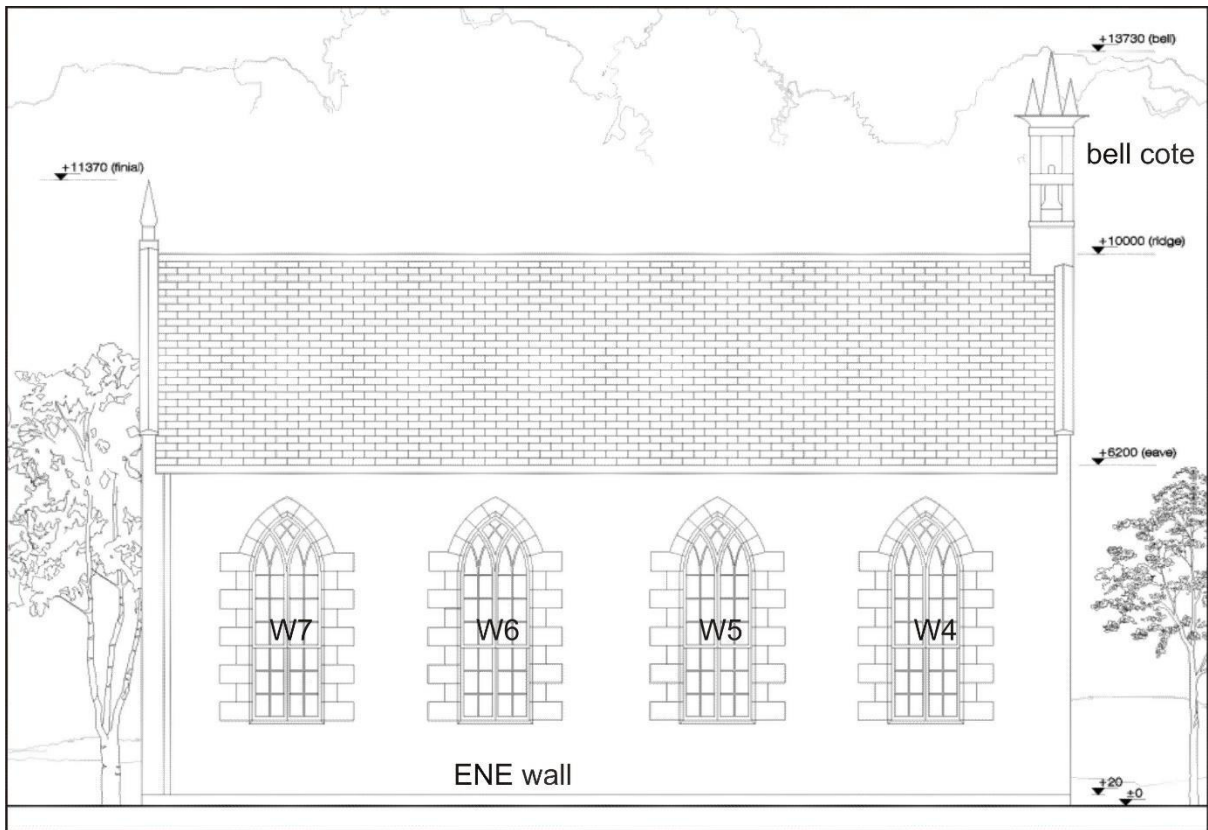
Illus 2 Ground floor plan annotated with survey numbers (based on Moxon Architects Ltd)



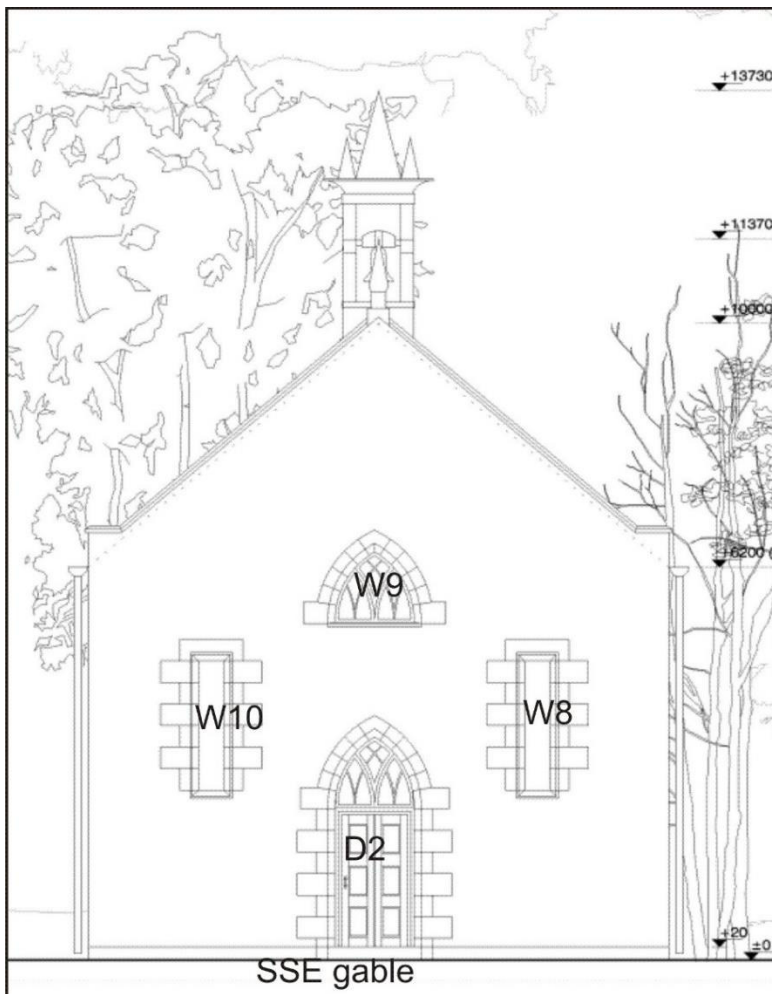
Illus 3 First floor plan annotated with survey numbers (based on Moxon Architects Ltd)



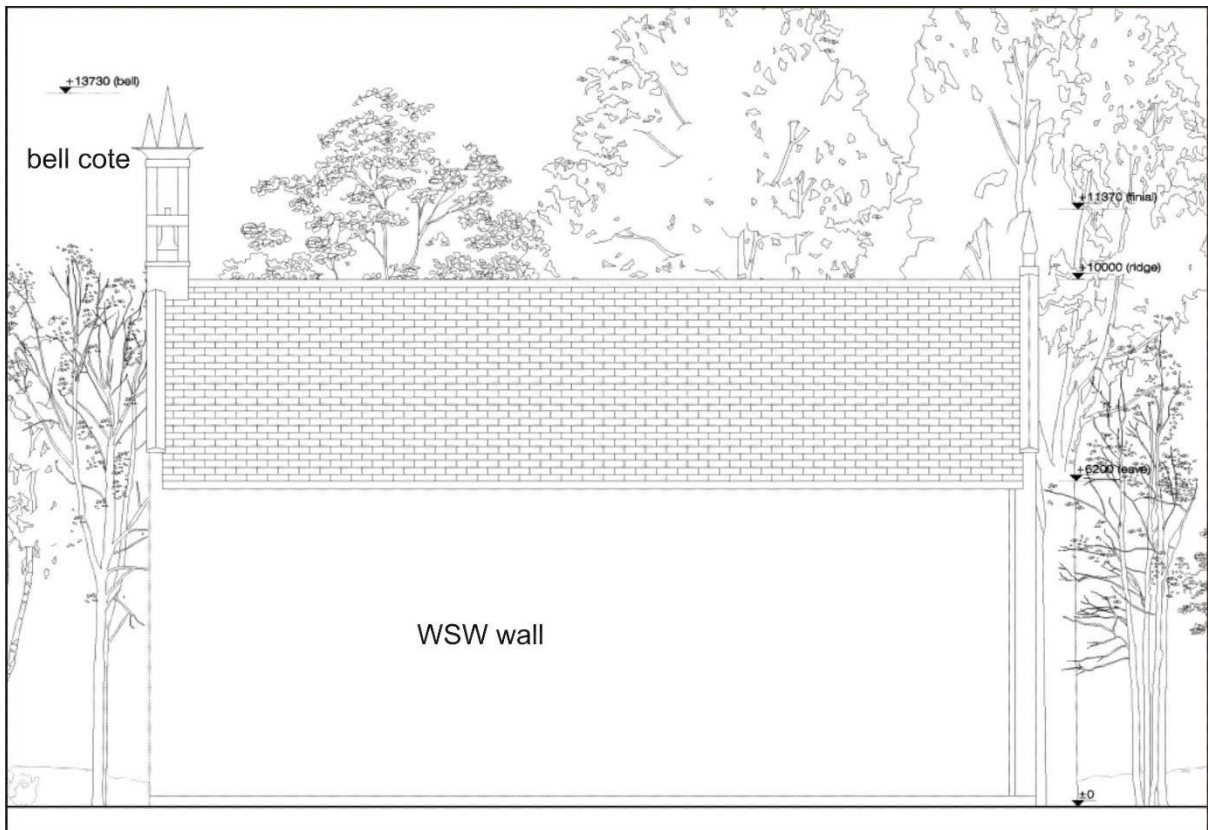
Illus 4 NNW elevation annotated with survey numbers (based on Moxon Architects Ltd)



Illus 5 ENE elevation annotated with survey numbers (based on Moxon Architects Ltd)



Illus 6 SSE elevation annotated with survey numbers (based on Moxon Architects Ltd)



Illus 7 WSW elevation (based on Moxon Architects Ltd)



Illus 8 NNW gable with central door (1) first floor window (W2) and long narrow blocked windows (W1 and W3) with bell-cote above.



Illus 9 ENE wall with windows W4 (right), W5, W6 and W7



Illus 10 Pulpit (centre) with W5 (left) and W6 (right); facing ENE

Phase 2

In Phase 2 the horseshoe shaped gallery was added in its current location bisecting window W7 (Illus 12, 13). Presumably long, narrow windows in the gables (W1, 3, 8, 10) were blocked at this time as these are now covered by the gallery. Room 2 was probably created at this time and stairs (Stairs 1 and 2) added to access the gallery.

Modern lighting was installed in the 20th century and older (?gas) light fittings (Illus 15) were removed and modern lighting added to light the gallery.

A small pipe organ was added opposite the pulpit (HS Listed Buildings online).

The pews have all been removed from the main church and the gallery and all the memorials which were formerly sited on the walls (CANMORE) have been removed.



Illus 11 Pulpit (left) and column supports for gallery; facing SSE



Illus 12 Gallery bisecting window W7; facing ENE



Illus 13 Window W7 lower section below gallery which bisected this originally larger window; facing ENE



Illus 14 Gallery from the pulpit; facing WSW



Illus 15 Detail of older light fittings (?gas; right) and modern light fittings



Illus 16 Former location of stove

3 RECOMMENDATIONS

A Level 1 standing building survey was carried out on 31 July 2015 and at least two phases of construction were recorded. It is recommended that no further archaeological work is required during the current planning application.

4 ACKNOWLEDGEMENTS

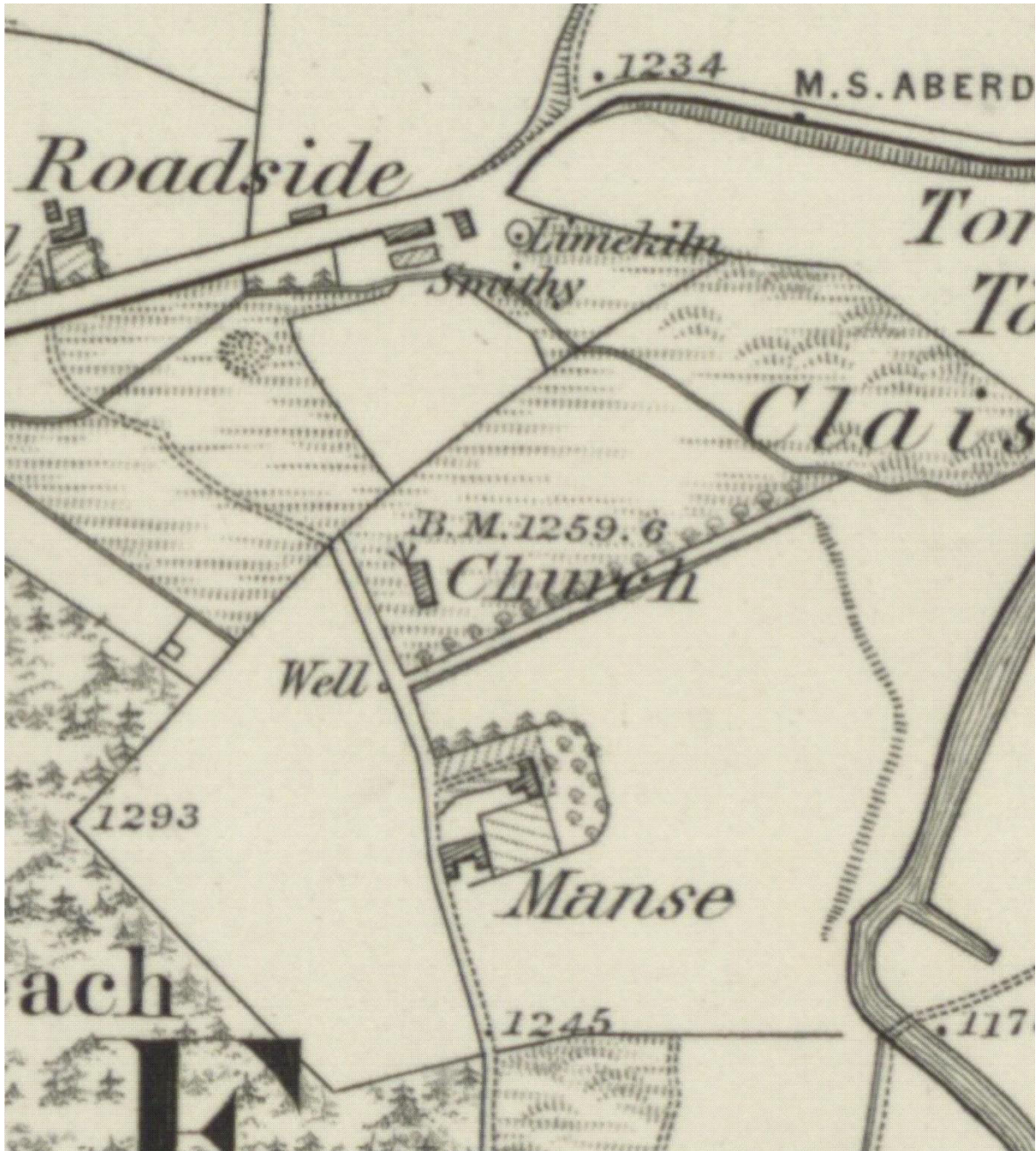
Thanks to Mr Jamie Home for commissioning this project and to Claire Herbert for her advice during the work.

5 REFERENCES

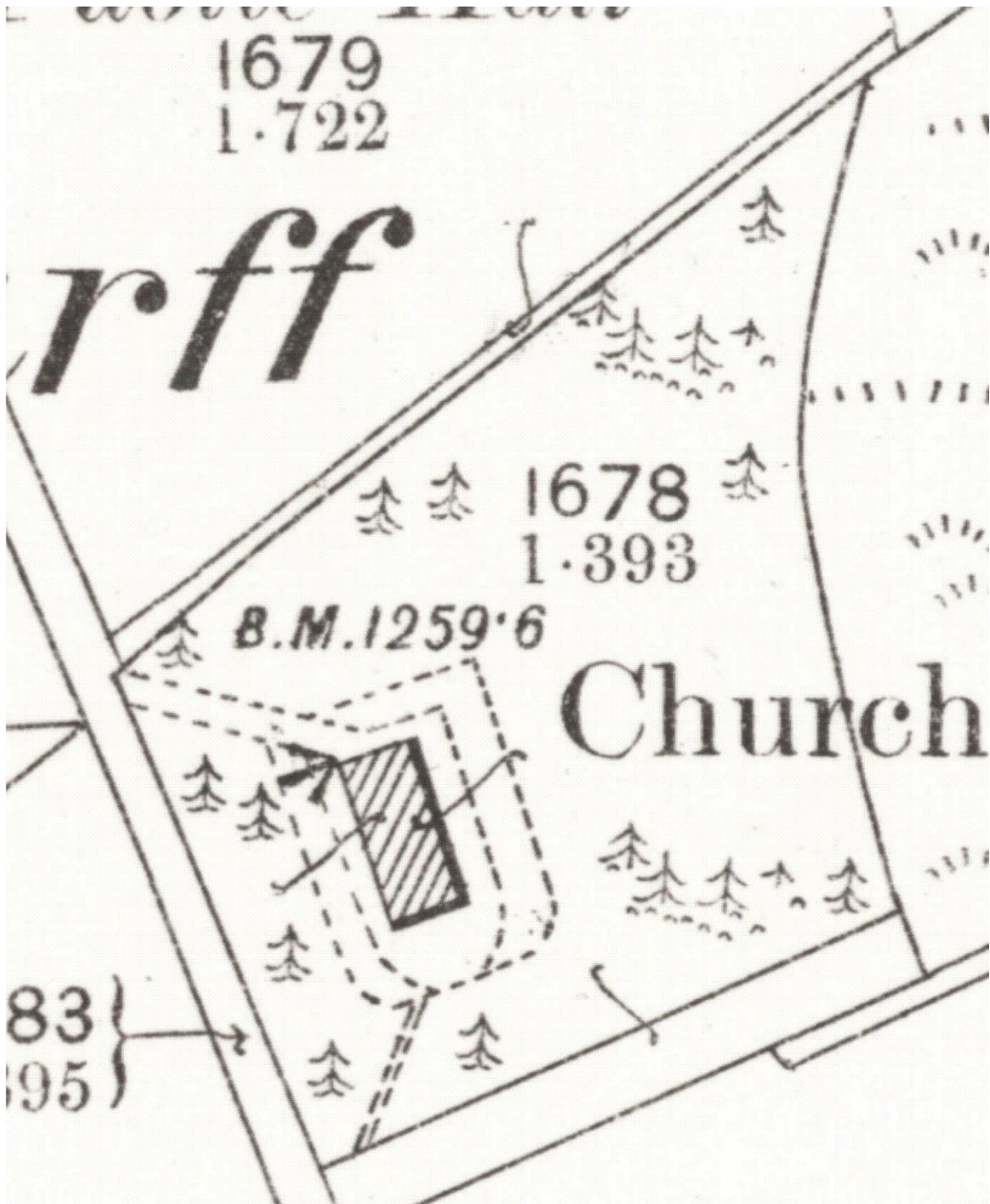
Shepherd, I A G. (2006) *Aberdeenshire, Donside and Strathbogie: an illustrated architectural guide*, in Charles McKean. Edinburgh. RCAHMS Shelf Number: Quick

Cameron Archaeology
45 View Terrace
Aberdeen
AB25 2RS
01224 643020
07581 181057
cameronarch@btinternet.com
www.cameronarchaeology.com
Company registration no 372223 (Scotland) VAT registration no 990 4373 00

APPENDIX 1 MAPS

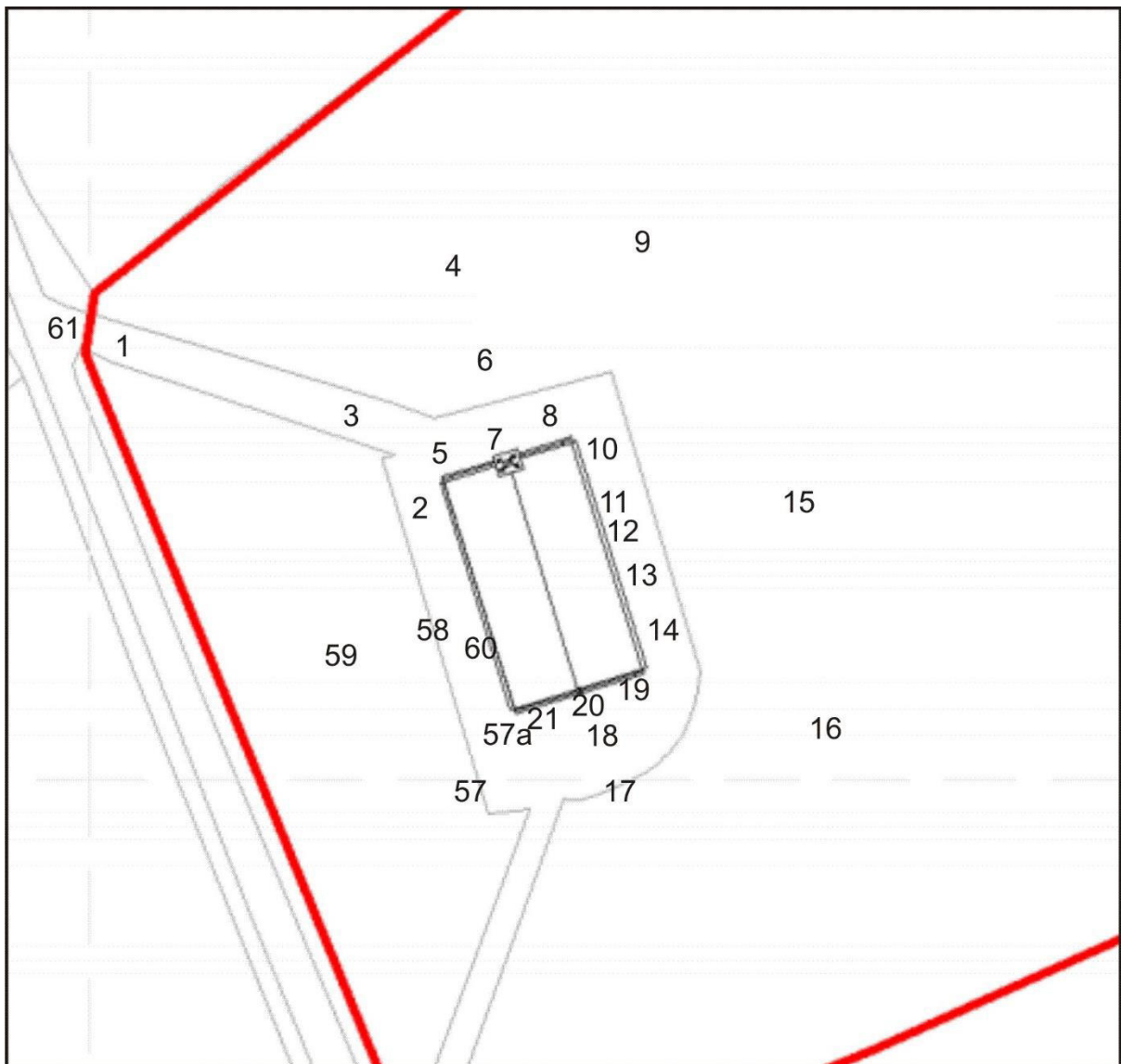


Illus 17 First Edition OS map showing church (centre). Aberdeenshire, Sheet LXVIII (includes: Crathie And Braemar; Strathdon) Survey date: 1867 Publication date: 1869 (copyright National Library of Scotland)

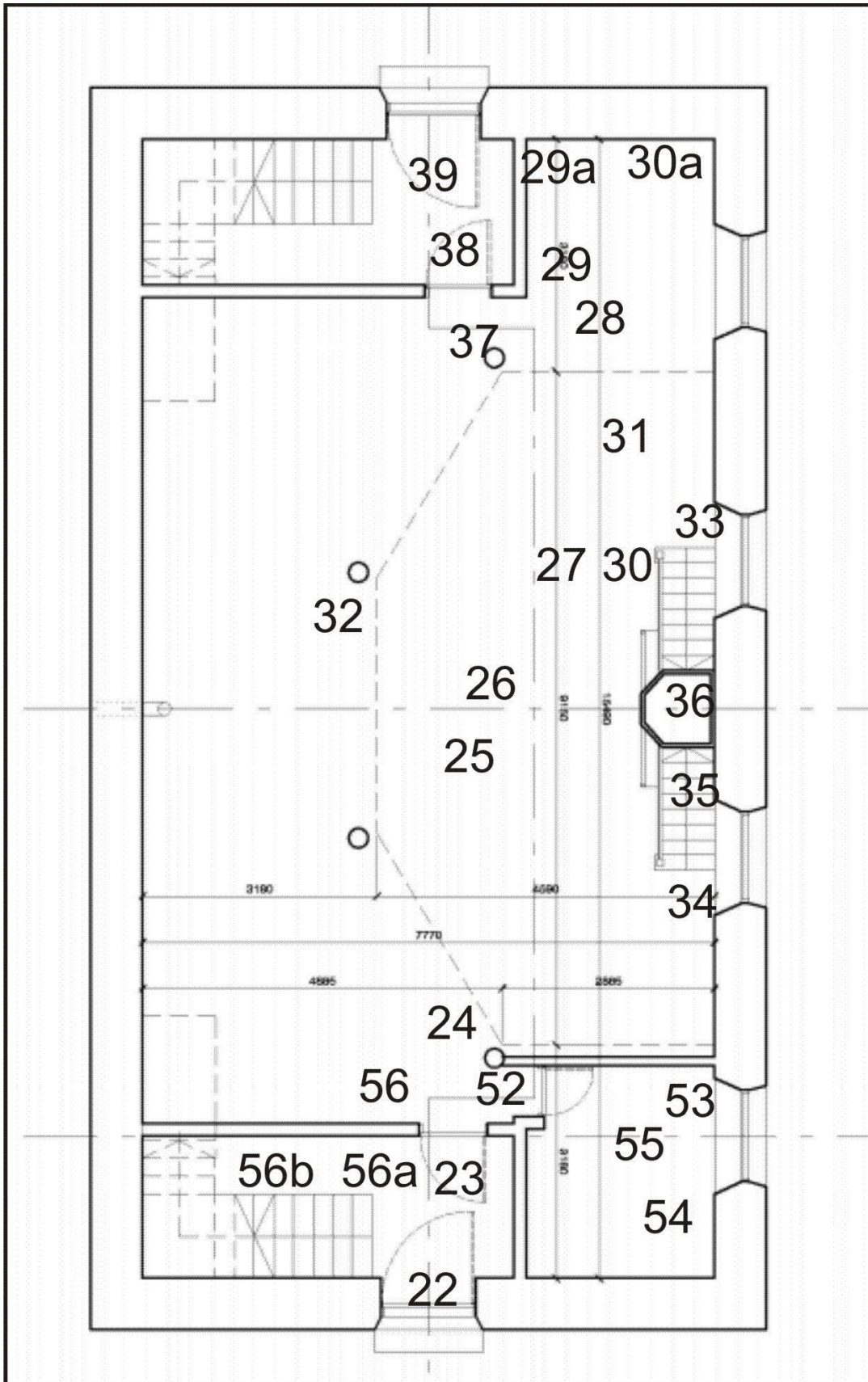


Illus 18 Second Edition OS map showing church. Aberdeenshire 068.08 (includes: Strathdon)
Publication date: 1901 Revised: ca. 1900 (copyright National Library of Scotland)

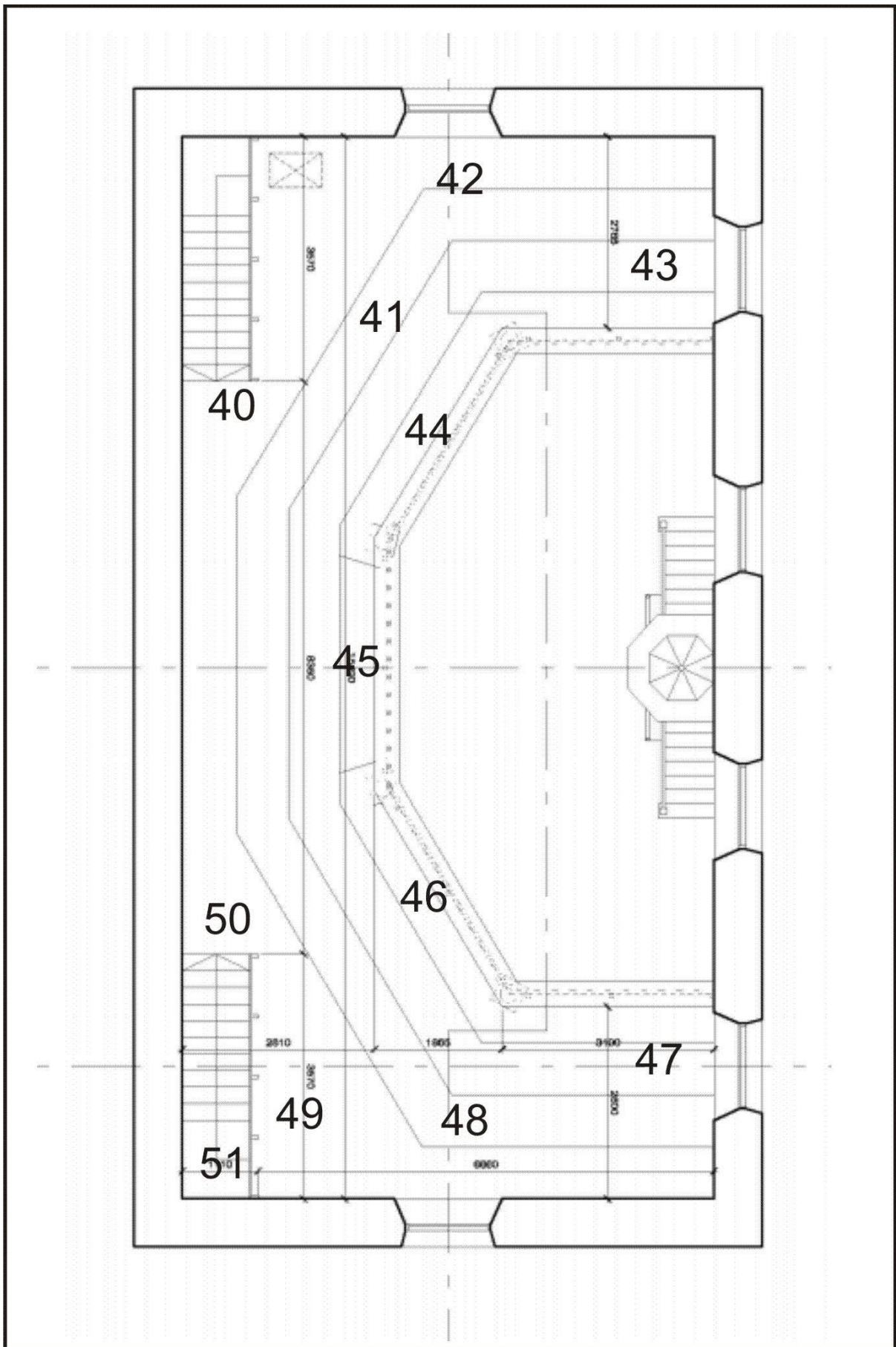
APPENDIX 2 PHOTOGRAPHS



Illus 19 Camera points used in this survey: exterior (from copyright Moxon Architects Ltd)



Illus 20 Camera points used in this survey: interior ground floor (from copyright Moxon Architects Ltd)



Illus 21 Camera points used in this survey: interior first floor (from copyright Moxon Architects Ltd)

Photo no	Description	Facing	Camera point
DSC_0752-4	Church from NW	SE	1
DSC_0755-6	OS bench mark	ENE	2
DSC_0757-62	Church from NW	SE	3
DSC_0763-4	NNW gable with central D1 and W1, 2 and 3	SSE	4
DSC_0765	W1	SSE	5
DSC_0766	D1	SSE	6
DSC_0767	W2	SSE	7
DSC_0768	Bellcote	SSE	8
DSC_0769	W3	SSE	6
DSC_0770	D1	SSE	6
DSC_0771-4	Church from NE	SW	9
DSC_0775	W4	WSW	10
DSC_0776	W5	WSW	11
DSC_0777	Wall under W5	WSW	11
DSC_0778	W6	WSW	12
DSC_0779	Stonework detail	WSW	13
DSC_0780	W7	WSW	14
DSC_0781-2	Church from E	WSW	15
DSC_0783	Church from SE	NW	16
DSC_0784	SSE gable	NNW	17
DSC_0785-6	SSE gable	NNW	18
DSC_0787	W8	NNW	19
DSC_0788	D2	NNW	20
DSC_0789	W9	NNW	21
DSC_0790	W10	NNW	20
DSC_0791-2	D2	NNW	20
DSC_0793-4	Concrete tiles in vestibule Room 5	NNW	22
DSC_0795	D3	NNW	23
DSC_0796	D3	SSE	24
DSC_0797	Room 1 main hall	SSE	25
DSC_0798	W6	ENE	26
DSC_0799	wall S of W6 showing panel removed	ENE	27
DSC_0800	Pulpit	N	27
DSC_0801	Pulpit	ENE	26
DSC_0802-5	Pulpit	ENE	26
DSC_0806	W5	ENE	27
DSC_0807	W4, W5	NE	31
DSC_0808	W4 showing gallery built over top of window	ENE	28
DSC_0809	W4 showing gallery built over top of window	ENE	28A
DSC_0810	Concrete tiles	NNW	29
DSC_0811	Floor boards on earthen surface	SSE	29A
DSC_0812	W5 and pulpit	SE	29
DSC_0813-4	W5 and pulpit	SSE	30A
DSC_0815	church soft furnishing		30

DSC_0816	Room 1 W wall	W	30
DSC_0817	Door 5 and NW corner Room 1	NW	30
DSC_0818	Room 1 W wall	W	30
DSC_0819	Room 1 SW corner	SW	30
DSC_0820	Room 1 N wall	NNW	32
DSC_0821	Room 1 W wall	W	32
DSC_0822	Room 1 W wall flue detail	W	32
DSC_0823	Room 1 S wall	S	32
DSC_0824	N Stairs to pulpit	S	33
DSC_0825	N Stairs to pulpit	S	33
DSC_0826	Pulpit	S	33
DSC_0827	Pulpit woodwork detail	ENE	30
DSC_0828	Pulpit woodwork detail	ENE	30
DSC_0829	S Stairs to pulpit	NNW	34
DSC_0830-1	S Stairs to pulpit woodwork detail	NW	34
DSC_0832-3	Pulpit details	NNW	35
DSC_0834	Pulpit seat	N	36
DSC_0835-6	Lectern	W	36
DSC_0837-8	N wall from pulpit	N	36
DSC_0839-40	NW corner from pulpit	NW	36
DSC_0841-2	W wall with gallery	W	36
DSC_0843-4	SW corner from pulpit	SW	36
DSC_0845	S Stairs to pulpit	S	36
DSC_0846	W6	SE	35
DSC_0847	S Stairs to pulpit	S	35
DSC_0848	D5	NNW	37
DSC_0849	D1	NNW	38
DSC_0850	D1	NNW	39
DSC_0851-2	Stair 2	W	39
DSC_0853	First floor gallery and W2	SSE	40
DSC_0854	First floor gallery and W2 (left) W4 (right)	NE	40
DSC_0855	W2	NNW	42
DSC_0856	W4	ENE	43
DSC_0857	Gallery pulpit and W9 (centre)	S	43
DSC_0858	Gallery	SW	43
DSC_0859	Ceiling fitting for ?gas lamps	S	43
DSC_0860	Old and modern ceiling fittings	S	43
DSC_0861	Under gallery floorboards	NW	44
DSC_0862-7	Pulpit with W5 (left) W6 (right)	ENE	45
DSC_0868	Gallery with W7 (left) and W9 (centre)	S	45
DSC_0869	Soft furnishings		
DSC_0870	Window 6 (left) with scar from removed memorial	ENE	46
DSC_0871	W6	NE	46
DSC_0872-3	W7 showing gallery covering part of window	ENE	47
DSC_0874	W9	SSE	48
DSC_0875	W9	SSE	46

DSC_0876-7	Top of stair 1	WSW/SW	48
DSC_0878	Gallery	N	48
DSC_0879	Gallery	N	47
DSC_0880	stair 1	WSW	49
DSC_0881	Gallery	N	49
DSC_0882	Gallery E wall windows	NE	49
DSC_0883	Gallery E wall windows	ENE	49
DSC_0884	Ceiling fittings older ?gas and modern electric light	ENE	49
DSC_0885-6	Ceiling fittings older ?gas and modern electric light	ENE	49
DSC_0887	stair 1	SSE	50
DSC_0888	stair 1 and Room 5	ENE	51
DSC_0889	D4 into Room 2	ENE	52
DSC_0890	Room 2	SW	53
DSC_0891	Room 2	S	53
DSC_0892	W7 showing gallery covering part of window	ENE	55
DSC_0893-6	W7 showing gallery covering part of window	ENE	55
DSC_0897-8	Room 2		
DSC_0899	D4		55
DSC_0900-1	Earthen floor	WSW	56
DSC_0902	D2	SE	56A
DSC_0903	D2	SE	56A
DSC_0904	D2	SE	56A
DSC_0905	Room 5 E wall	ENE	56B
DSC_0906	D2	SSE	23
DSC_0907	Church from SW	NE	57
DSC_0908	bellcote	NE	58
DSC_0909	SW quoins	NE	57A
DSC_0910-11	W wall	ENE	59
DSC_0912	black sandstone detail	ENE	60
DSC_0913-15	church from road	SE	61
DSC_0916-18	bell cote details	SE	3



DSC_0752.JPG



DSC_0753.JPG



DSC_0754.JPG



DSC_0755.JPG



DSC_0756.JPG



DSC_0757.JPG



DSC_0758.JPG



DSC_0759.JPG



DSC_0760.JPG



DSC_0762.JPG



DSC_0763.JPG



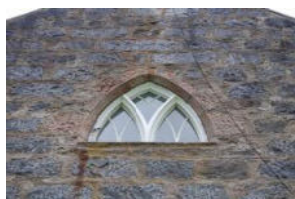
DSC_0764.JPG



DSC_0765.JPG



DSC_0766.JPG



DSC_0767.JPG



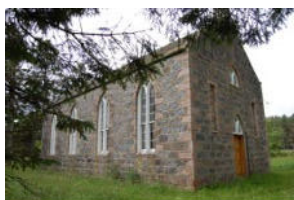
DSC_0768.JPG



DSC_0769.JPG



DSC_0770.JPG



DSC_0771.JPG



DSC_0772.JPG



DSC_0773.JPG



DSC_0774.JPG



DSC_0775.JPG



DSC_0776.JPG



DSC_0777.JPG



DSC_0778.JPG



DSC_0779.JPG



DSC_0780.JPG



DSC_0781.JPG



DSC_0782.JPG



DSC_0783.JPG



DSC_0784.JPG



DSC_0785.JPG



DSC_0786.JPG



DSC_0787.JPG



DSC_0788.JPG



DSC_0789.JPG



DSC_0790.JPG



DSC_0791.JPG



DSC_0792.JPG



DSC_0793.JPG



DSC_0794.JPG



DSC_0795.JPG



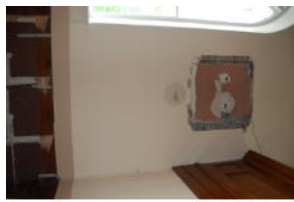
DSC_0796.JPG



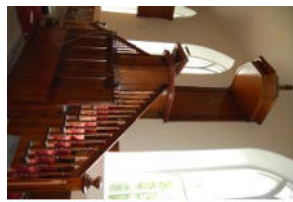
DSC_0797.JPG



DSC_0798.JPG



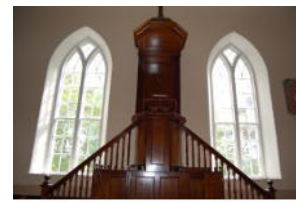
DSC_0799.JPG



DSC_0800.JPG



DSC_0801.JPG



DSC_0802.JPG



DSC_0803.JPG



DSC_0804.JPG



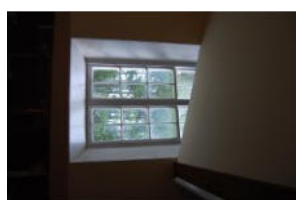
DSC_0805.JPG



DSC_0806.JPG



DSC_0807.JPG



DSC_0808.JPG



DSC_0809.JPG



DSC_0810.JPG



DSC_0811.JPG



DSC_0812.JPG



DSC_0813.JPG



DSC_0814.JPG



DSC_0815.JPG



DSC_0816.JPG



DSC_0817.JPG



DSC_0818.JPG



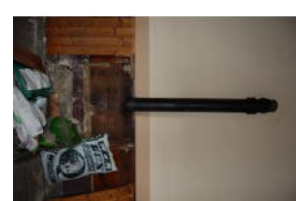
DSC_0819.JPG



DSC_0820.JPG



DSC_0821.JPG



DSC_0822.JPG



DSC_0823.JPG



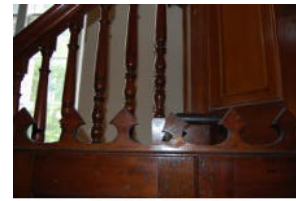
DSC_0824.JPG



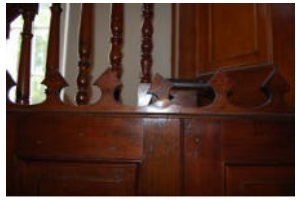
DSC_0825.JPG



DSC_0826.JPG



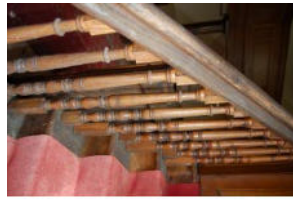
DSC_0827.JPG



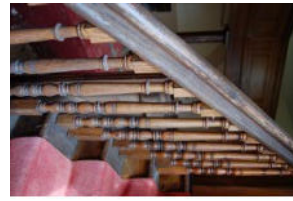
DSC_0828.JPG



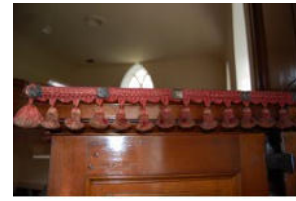
DSC_0829.JPG



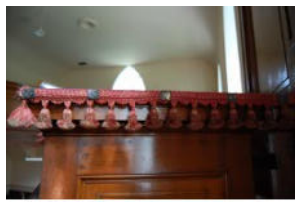
DSC_0830.JPG



DSC_0831.JPG



DSC_0832.JPG



DSC_0833.JPG



DSC_0834.JPG



DSC_0835.JPG



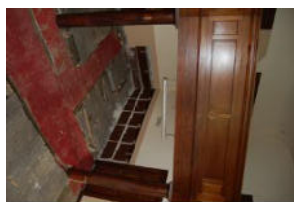
DSC_0836.JPG



DSC_0837.JPG



DSC_0838.JPG



DSC_0839.JPG



DSC_0840.JPG



DSC_0841.JPG



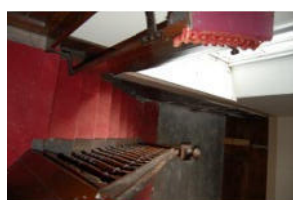
DSC_0842.JPG



DSC_0843.JPG



DSC_0844.JPG



DSC_0845.JPG



DSC_0846.JPG



DSC_0847.JPG



DSC_0848.JPG



DSC_0849.JPG



DSC_0850.JPG



DSC_0851.JPG



DSC_0852.JPG



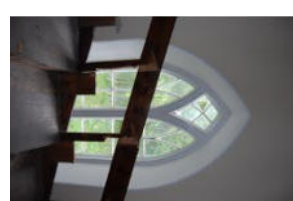
DSC_0853.JPG



DSC_0854.JPG



DSC_0855.JPG



DSC_0856.JPG



DSC_0857.JPG



DSC_0858.JPG



DSC_0859.JPG



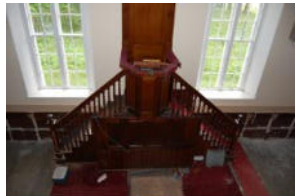
DSC_0860.JPG



DSC_0861.JPG



DSC_0862.JPG



DSC_0863.JPG



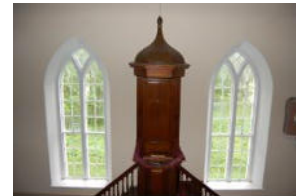
DSC_0864.JPG



DSC_0865.JPG



DSC_0866.JPG



DSC_0867.JPG



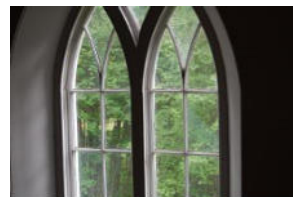
DSC_0868.JPG



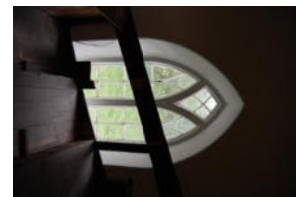
DSC_0869.JPG



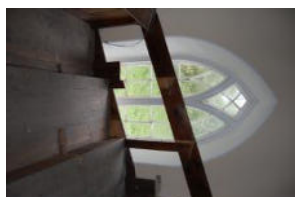
DSC_0870.JPG



DSC_0871.JPG



DSC_0872.JPG



DSC_0873.JPG



DSC_0874.JPG



DSC_0875.JPG



DSC_0876.JPG



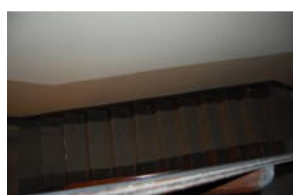
DSC_0877.JPG



DSC_0878.JPG



DSC_0879.JPG



DSC_0880.JPG



DSC_0881.JPG



DSC_0882.JPG



DSC_0883.JPG



DSC_0884.JPG



DSC_0885.JPG



DSC_0886.JPG



DSC_0887.JPG



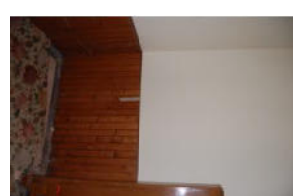
DSC_0888.JPG



DSC_0889.JPG



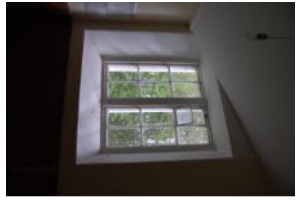
DSC_0890.JPG



DSC_0891.JPG



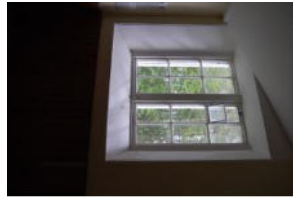
DSC_0892.JPG



DSC_0893.JPG



DSC_0894.JPG



DSC_0895.JPG



DSC_0896.JPG



DSC_0897.JPG



DSC_0898.JPG



DSC_0899.JPG



DSC_0900.JPG



DSC_0901.JPG



DSC_0902.JPG



DSC_0903.JPG



DSC_0904.JPG



DSC_0905.JPG



DSC_0906.JPG



DSC_0907.JPG



DSC_0908.JPG



DSC_0909.JPG



DSC_0910.JPG



DSC_0911.JPG



DSC_0912.JPG



DSC_0913.JPG



DSC_0914.JPG



DSC_0915.JPG



DSC_0916.JPG



DSC_0917.JPG



DSC_0918.JPG