

**53 College Bounds, Old Aberdeen, AB24 3DY  
Report on Watching Brief (CA268)**



**Alison Cameron  
Cameron Archaeology  
24 November 2015**

## CONTENTS

1	INTRODUCTION .....	3
2	BACKGROUND .....	4
3	THE WATCHING BRIEF .....	4
4	CONCLUSIONS AND RECOMMENDATIONS.....	5
5	ACKNOWLEDGEMENTS .....	6
	APPENDIX 1 MAPS.....	7
	APPENDIX 2 PHOTOGRAPHS .....	8

## ILLUSTRATIONS

Cover: Trench 2 with 53 College Bounds in background showing area of building materials in trench

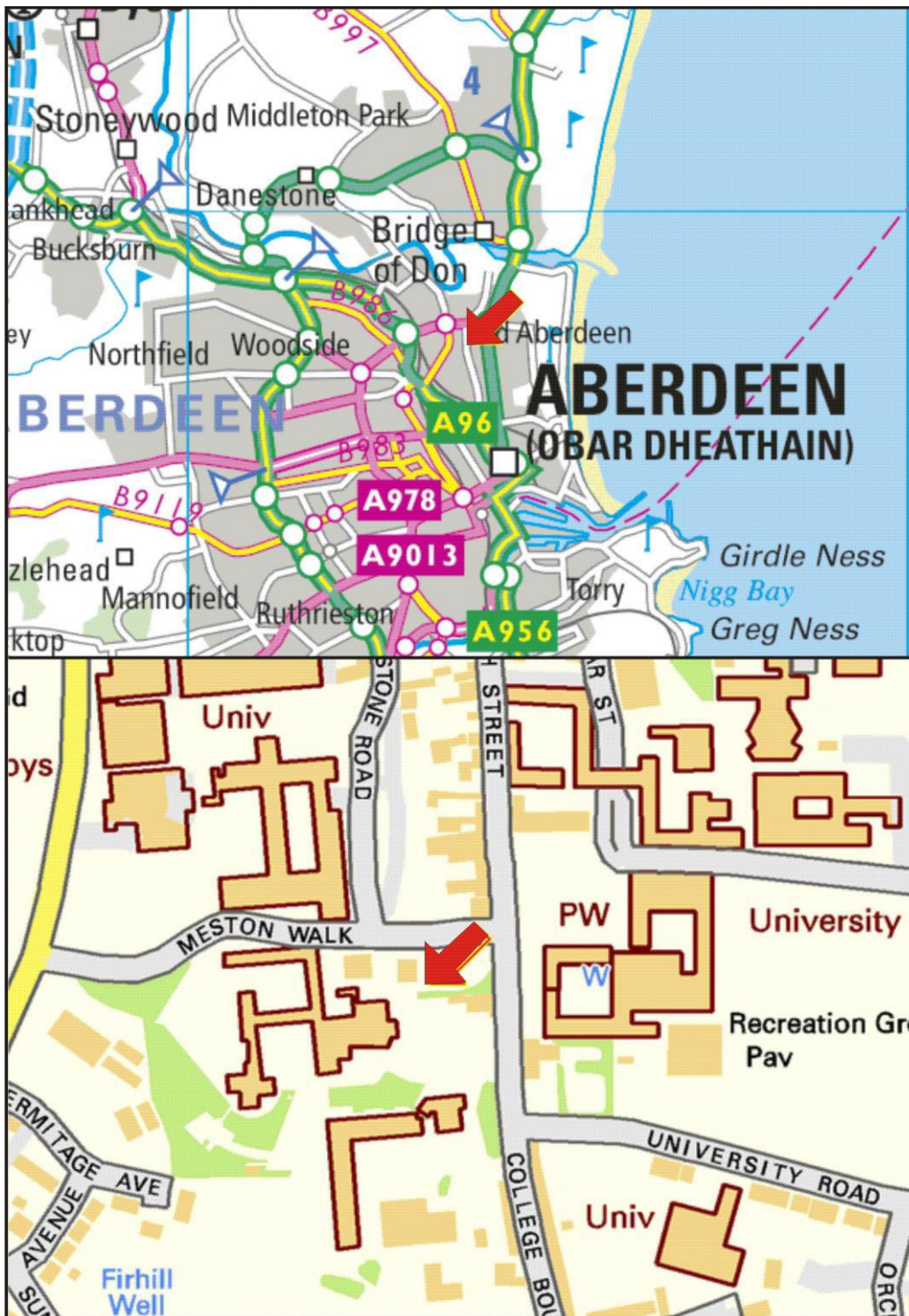
Illus 1	Location plan .....	3
Illus 2	Plan showing trenches and area of building materials.....	4
Illus 3	Trench 1 showing garden soil with 51 College Bounds (right); facing N .....	5
Illus 4	Trench 2 stones in base of trench; facing N .....	6
Illus 5	First Edition Ordnance Survey map showing location of trenches in red. ....	7
Illus 6	Second Edition Ordnance Survey map showing location of trenches in red. ....	7
Illus 7	Third Edition Ordnance Survey map showing location of trenches in red. ....	8

## SUMMARY

A watching brief was carried out from 18-20 November 2015 during the excavation of a trench for fibre optic cables to 53 College Bounds. One trench was excavated on the S side of the garden wall adjacent to the Powis Lodge, 51 College Bounds, the former Rocking Horse Nursery (Trench 1) and one trench within the front garden of 53 College Bounds (Trench 2). The trenches were filled with garden soil and one area of construction/ demolition material in Trench 2 which may have been associated with demolition of greenhouses or garden buildings. The cabling has now been laid and the trench is now backfilled.

# 1 INTRODUCTION

- 1.1 The site (Illus 1) is located on the W side of College Bounds in the grounds of 51 and 53 College Bounds. It is centred on NGR NJ 93880 08132, at 10-15m OD (Illus 1) and in the parish of Aberdeen.
- 1.2 The work was commissioned by Bob Watson, Estates Section, University of Aberdeen.
- 1.3 All the archaeological work was carried out in the context of Scottish Planning Policy (SPP) Planning Advice Note (PAN 2/2011) and Scottish Historic Environment Policy (SHEP), which state that archaeological remains should be regarded as part of the environment to be protected and managed.



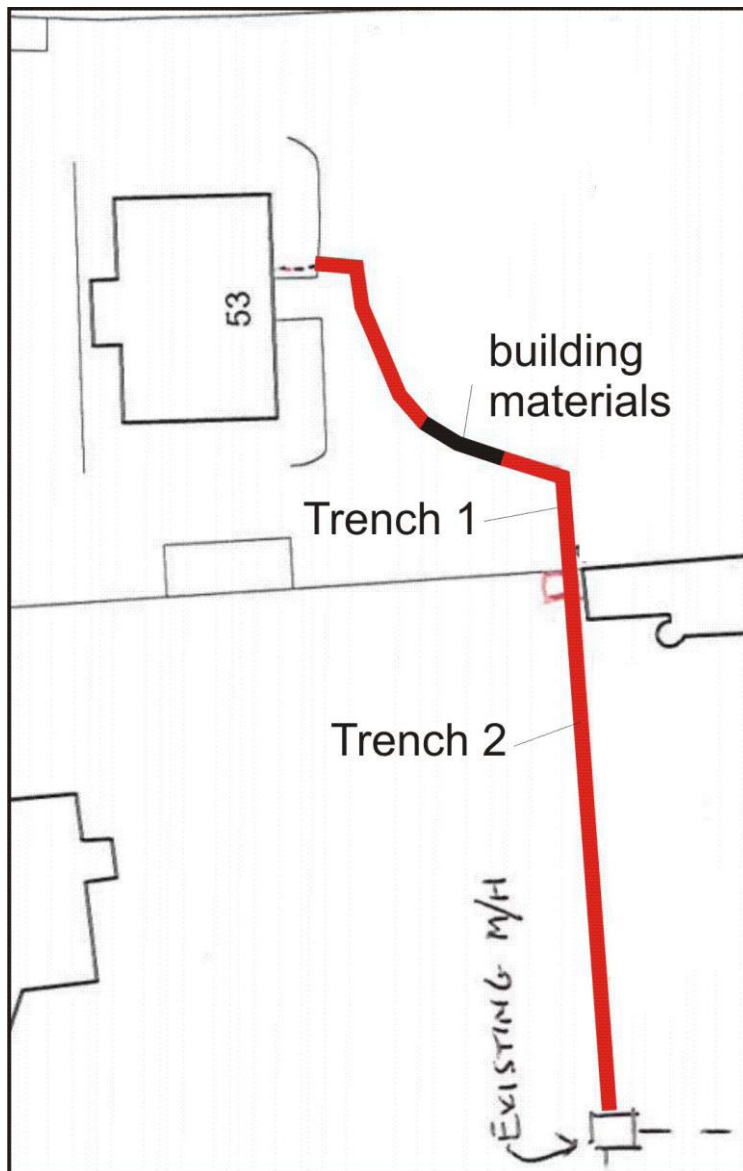
Illus 1 Location plan (Contains Ordnance Survey data © Crown copyright and database right 2015)

## 2 BACKGROUND

53 College Bounds is a two storey house with attic and basement (NJ90NW 694) Listed B and dated to around 1800. The garden have been cleared and all the outhouses seen on the 1<sup>st</sup> Edition and later maps have been removed. 51 and 51½ College Bounds (NJ90NW 272) is Listed B and was constructed in 1697, remodelled 1711 and again 1829. There have been many archaeological interventions in the area.

## 3 THE WATCHING BRIEF

A watching brief was carried out on 18-20 November 2015. A trench 0.5m wide and 0.5m deep was excavated with small tracked excavator to bury a fibre optic cable. Trench 1 in the garden of the former Rocking Horse Nursery, was filled with garden soil. At the N end of the trench beside the N boundary wall there was mortar and stones in the base of the trench. This was left unexcavated. Trench 2 in the garden of 53 College Bounds was filled with garden soil with an area of building rubble, hand-made brick, stone, pan tile, mortar, off-white plaster and slate fragments. There were stones 0.6m below the ground surface but these were left unexcavated.



Illus 2 Plan showing trenches and area of building materials (copyright University of Aberdeen).

## 4 CONCLUSIONS AND RECOMMENDATIONS

A watching brief was carried out from 18-20 November 2015 during the excavation of a trench for fibre optic cables to 53 College Bounds. One trench was excavated on the S side of the garden wall adjacent to the Powis Lodge, 51 College Bounds, the former Rocking Horse Nursery (Trench 1; Illus 3) and one trench within the front garden of 53 College Bounds (Trench 2; Illus 4). The trenches were filled with garden soil and one area of construction/demolition material in Trench 2 which may have been associated with demolition of greenhouses or garden buildings.



Illus 3 Trench 1 showing garden soil with 51 College Bounds (right); facing N



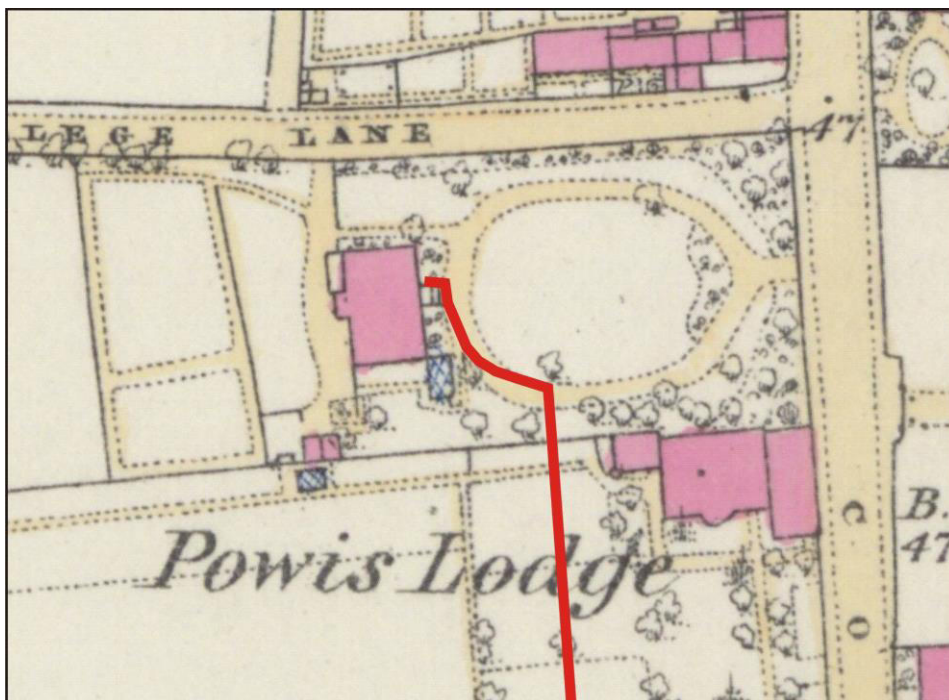
Illus 4 Trench 2 stones in base of trench; facing N

## 5 ACKNOWLEDGEMENTS

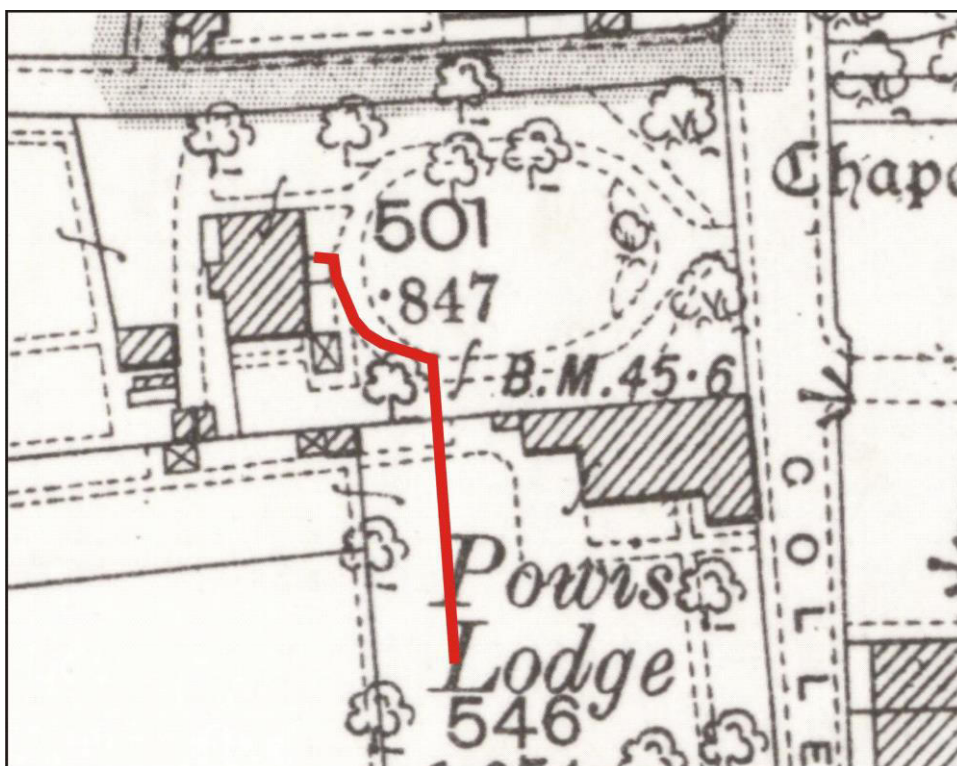
Thanks to Bob Watson, University of Aberdeen for commissioning this project, to CHAP staff for their help on site and to Bruce Mann, Aberdeenshire Council Archaeology Service for his advice during the work.

Cameron Archaeology  
45 View Terrace  
Aberdeen  
AB25 2RS  
01224 643020  
07581 181057  
cameronarch@btinternet.com  
www.cameronarchaeology.com  
Company registration no 372223 (Scotland)  
VAT registration no 990 4373 00

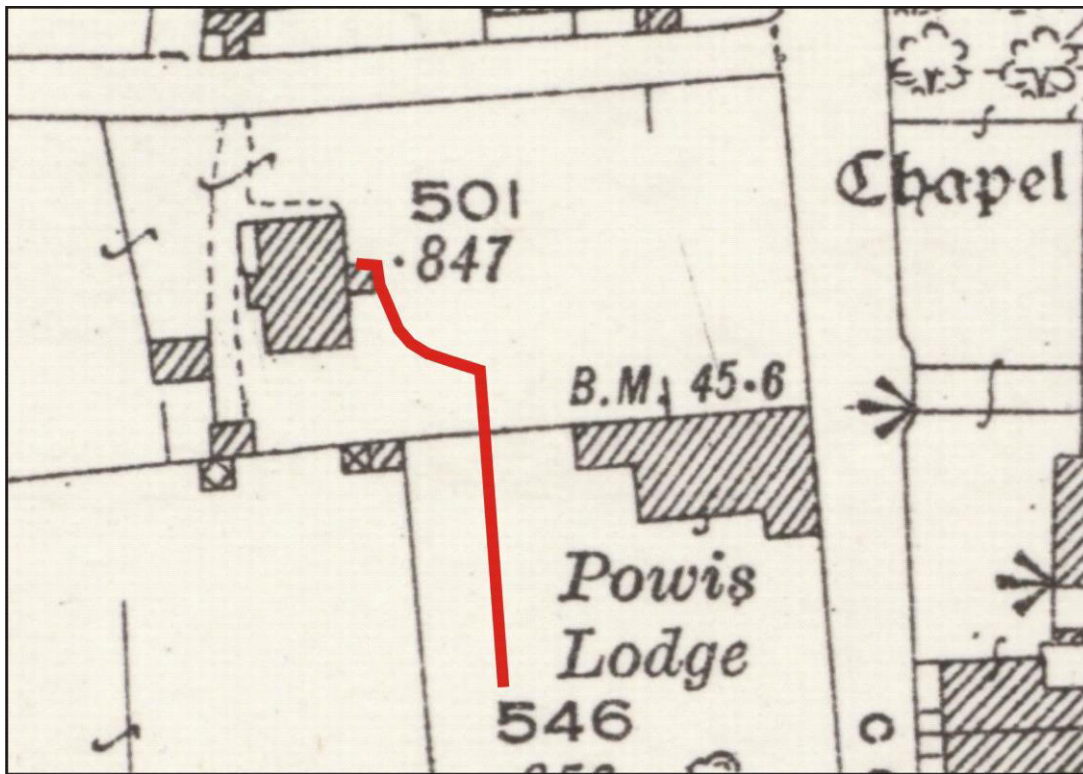
## APPENDIX 1 MAPS



Illus 5 First Edition Ordnance Survey map showing location of trenches in red. Aberdeen Sheet LXXV.7 (Old Machar) Survey date: 1867 Publication date: 1869 (copyright National Library of Scotland)



Illus 6 Second Edition Ordnance Survey map showing location of trenches in red. Aberdeenshire 075.07 (includes: Aberdeen) Publication date: 1901 Revised: 1899 (copyright National Library of Scotland)



Illus 7 Third Edition Ordnance Survey map showing location of trenches in red. Aberdeenshire 075.07 (includes: Aberdeen) Publication date: 1926 Revised: 1924 Levelled: 1899 (copyright National Library of Scotland)

## APPENDIX 2 PHOTOGRAPHS

Photo no	Description	Facing
DSC_2576-7	Trench 2 deep garden soil	S
DSC_2578	Building materials Trench 2	
DSC_2579	Trench 2 deep garden soil	SW
DSC_2580	Trench 2 deep garden soil	S
DSC_2581-4	Building materials Tr 2	NW
DSC_2585-6	Building materials Tr 2	E
DSC_2587	Building materials Tr 2	NW
DSC_2588-91	Trench 2 location with King's College and Powis Lodge	SE/E
DSC_2592-2604	Trench 2 location with 53 College Bounds	NW/N
DSC_2605-10	Trench 2 location with King's College and Powis Lodge	SE/E
DSC_2611-13	Trench 2 location with 53 College Bounds	NW/N
PB180206-40	Trench 1	
PB180241-62	Trench 2	





DSC\_2576.JPG



DSC\_2577.JPG



DSC\_2578.JPG



DSC\_2579.JPG



DSC\_2580.JPG



DSC\_2581.JPG



DSC\_2582.JPG



DSC\_2583.JPG



DSC\_2584.JPG



DSC\_2585.JPG



DSC\_2586.JPG



DSC\_2587.JPG



DSC\_2588.JPG



DSC\_2589.JPG



DSC\_2590.JPG



DSC\_2591.JPG



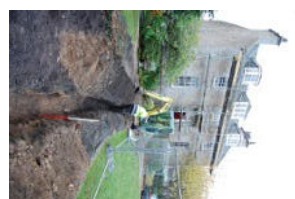
DSC\_2592.JPG



DSC\_2593.JPG



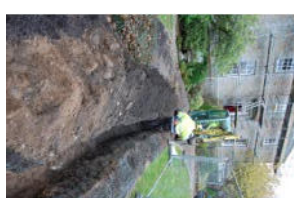
DSC\_2594.JPG



DSC\_2595.JPG



DSC\_2596.JPG



DSC\_2597.JPG



DSC\_2598.JPG



DSC\_2599.JPG



DSC\_2600.JPG



DSC\_2601.JPG



DSC\_2602.JPG



DSC\_2603.JPG



DSC\_2604.JPG



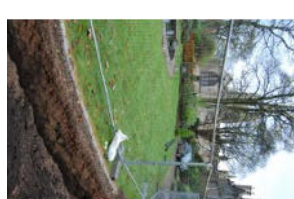
DSC\_2605.JPG



DSC\_2606.JPG



DSC\_2607.JPG



DSC\_2608.JPG



DSC\_2609.JPG



DSC\_2610.JPG



DSC\_2611.JPG



DSC\_2612.JPG



DSC\_2613.JPG



PB180206.JPG



PB180207.JPG



PB180208.JPG



PB180209.JPG



PB180210.JPG



PB180211.JPG



PB180212.JPG



PB180213.JPG



PB180214.JPG



PB180215.JPG



PB180216.JPG



PB180217.JPG



PB180218.JPG



PB180219.JPG



PB180220.JPG



PB180221.JPG



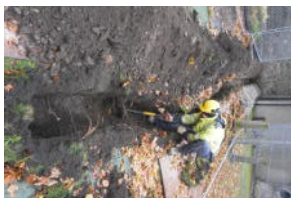
PB180222.JPG



PB180223.JPG



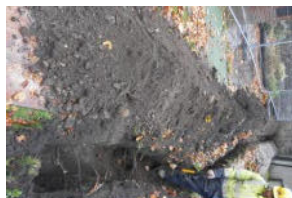
PB180224.JPG



PB180225.JPG



PB180226.JPG



PB180227.JPG



PB180228.JPG



PB180229.JPG



PB180230.JPG



PB180231.JPG



PB180232.JPG



PB180233.JPG



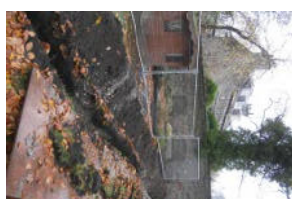
PB180234.JPG



PB180235.JPG



PB180236.JPG



PB180237.JPG



PB180238.JPG



PB180239.JPG



PB180240.JPG



PB200241.JPG



PB200242.JPG



PB200243.JPG



PB200244.JPG



PB200245.JPG



PB200246.JPG



PB200247.JPG



PB200248.JPG



PB200249.JPG



PB200250.JPG



PB200251.JPG



PB200252.JPG



PB200253.JPG



PB200254.JPG



PB200255.JPG



PB200256.JPG



PB200257.JPG



PB200258.JPG



PB200259.JPG



PB200260.JPG



PB200261.JPG



PB200262.JPG