

**Archaeological Excavations at East Lodge, Phase 2B, Ury
Estate, Stonehaven, AB39 2PT
Report and DSR**



Robert Lenfert and Alison Cameron
Date: 25 October 2015

CONTENTS

1	INTRODUCTION	4
2	ARCHAEOLOGICAL BACKGROUND	5
3	THE EXCAVATION.....	6
3.1	Area 1: Hut Circle 1 (HC1)	9
3.11	Stone Foundations	9
3.12	HC1 Postholes	9
3.13	Internal Posts	10
3.14	Internal pits and features 137, 98, 130 (possible kiln)	10
3.15	External pits and features: 033 & 129.....	13
3.16	Pit N of HC1 (Illus 3).....	13
3.17	Pits E of HC1 (Illus 3)	13
3.2	Hut Circle 2 (HC2).....	13
3.3	Structure 3	14
3.4	Trench 2: Pit	16
3.5	The Finds	17
4	RECOMMENDATIONS.....	19
5	REFERENCES	19
6	ACKNOWLEDGEMENTS	20
	APPENDIX 1 SMALL FINDS.....	21
	APPENDIX 2 CONTEXTS.....	22
	APPENDIX 3 SAMPLES	31
	APPENDIX 4 PHOTOGRAPHS	33

ILLUSTRATIONS

Cover (top) Ring ditch HC1 facing S; (bottom) one side of SF22 cup and ring marked stone

Illus 1	Location plan)	4
Illus 2	Excavation areas	6
Illus 3	Post-excavation plan showing Area 1	7
Illus 4	Plan Hut Circle 1, main posts (red), secondary or internal posts (blue) and hearth (yellow)	8
Illus 5	Post-excavation view of Hut Circle 1; facing S	9
Illus 6	SSW post-hole bases 109 (left foreground) 134 (right foreground); facing NNE.....	10
Illus 7	Post-excavation view of Hut Circle 1 showing main post-holes and more ephemeral internal post-hole bases; facing S	11

Illus 8 Feature 130 charcoal fill 83 with pottery and unfired grey clay lump; facing W	12
Illus 9 Pottery base with stone SF29 in situ feature 130; facing N	12
Illus 10 Stones 33 and 129 (centre right); facing N	13
Illus 11 HC2 facing N	14
Illus 12 Structure 3 in SW corner of Area 1. Note large stone-filled pit (144) in lower left. ...	15
Illus 13 141half sectioned; facing	16
Illus 14 Post-excavation view of truncated pit 053 in Area 2	17
Illus 15 Double-sided, double-carved, portable cup and ring-marked stone from 033 set just within eastern foundation trench.	18

SUMMARY

Following the discovery of prehistoric settlements and artefacts during an archaeological evaluation in April and May of 2015 for the East Lodge Development (Lenfert 2015), subsequent excavations were carried out between July 17th and September 8th, 2015 by Robert Lenfert and Stuart Farrell of Cameron Archaeology.

The excavations revealed the foundations of three prehistoric structures, two of which may be regarded as ‘hut circles’, while the third forms a slighter, perhaps temporary, shelter or outbuilding. In addition, a number of refuse or storage pits and shallow deposits, both within and outwith the structures were identified. The artefacts recovered include two partial saddle-type quernstones for grinding grain, pierced stones, stones with a single cup mark, cup and ring marked stone, flint tools and waste flakes or ‘debitage’, and decorated and undecorated pottery fragments.

Most notably, the excavation revealed a remarkable double-sided, double-carved portable cup and ring-marked stone (*see cover*), which thus far appears to be a unique archaeological find within a Scottish, if not European, context. An abundance of charcoal fragments sampled throughout the site will allow C¹⁴ radiocarbon determinations to accurately date phases of site occupation and activity.

A Post Excavation Research Design (PERD) will be produced detailing post-excavation costs which will be agreed by the client prior to post-excavation and publication.

1 INTRODUCTION

- 1.1 The site (Illus 1) is located on the north side of the A90 west of its junction with the B979 Netherley Road and NE of the Cowie Water. It is centred on NGR NO 86609 87458, at 40-80m OD, on land sloping gently to moderately uphill to the NNE.
- 1.2 The work was commissioned by Scott Leitch, Halliday Fraser Munro for FM Ury Ltd. Aberdeenshire Planning Application APP/2014/3297 was referred to Infrastructure Services committee on 9 December 2014 with a standard archaeology condition (condition 3). Aberdeenshire Archaeology Service required a 7-10% archaeological evaluation which was completed in the summer of 2015, with positive results for significant archaeological remains, forming the impetus for this excavation.
- 1.3 All the archaeological work was carried out in the context of Scottish Planning Policy (SPP) Planning Advice Note (PAN 2/2011) and Scottish Historic Environment Policy (SHEP), which state that archaeological remains should be regarded as part of the environment to be protected and managed.



Illus 1 Location plan (Contains Ordnance Survey data © Crown copyright and database right 2015)

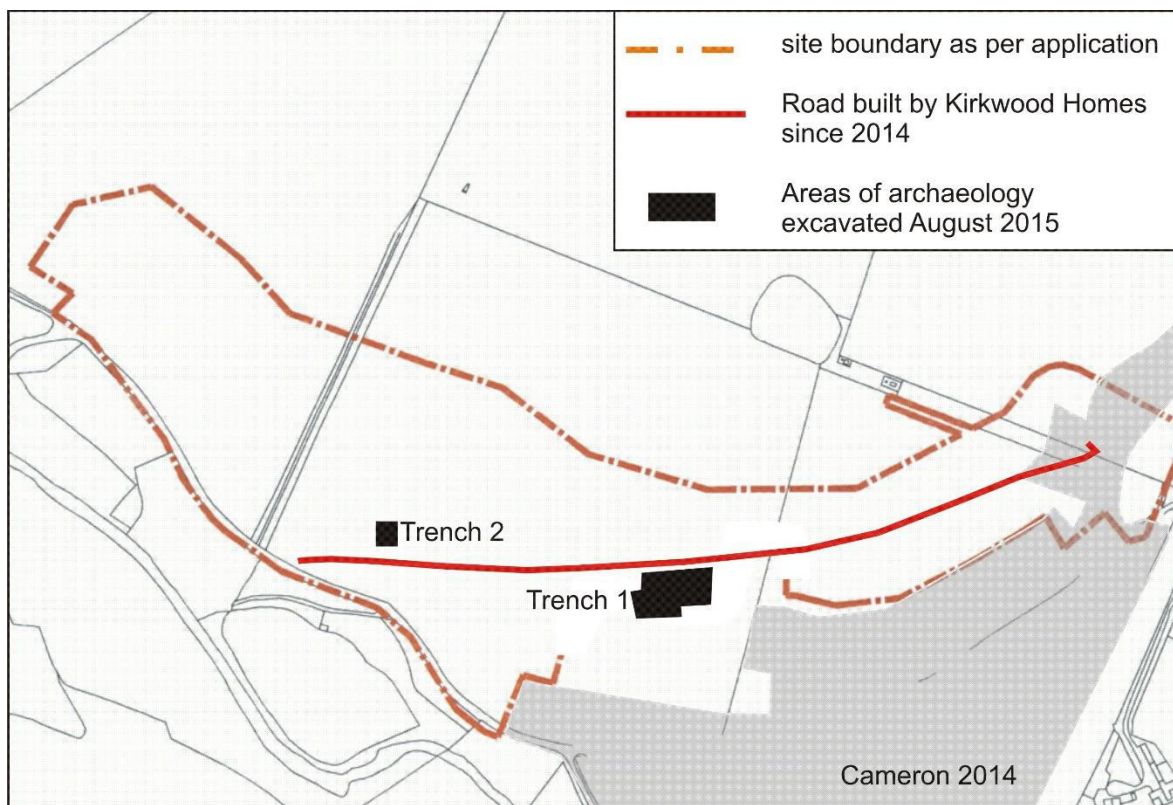
2 ARCHAEOLOGICAL BACKGROUND

- 2.1 There is one Scheduled Ancient Monument within 1km of the proposed development. Cowie Line, pill boxes (NO88NE 88.01, 88.02) & anti-tank blocks (NO88NE 88.05) is 200m SW to 275m SE of Ury House. The monument comprises two Type-22 pill boxes, situated on high ground to the south of the Cowie Water, covering the bridge over the river SE of Ury House, and its approaches. The pill boxes are 6-sided, made of a mixture of granite, concrete and brick. The western pillbox has additional firing loops on two sides. There are also concrete tank blocks on both sides of the bridge and 6 fine examples to the NW of the western pill box on the south bank of the Cowie Water. To the west of the bridge the southern bank of the Cowie Water has been made vertical to provide a further obstacle. To the east of the bridge, in a wood, is a possible weapon pit. Three areas are to be scheduled. The westernmost contains one pill box and 6 concrete tank blocks. It measures a maximum of 100m WSW to ENE by 60m transversely. The middle area contains the second pill box, the artificially-altered section of the river bank, and one concrete tank block. It measures a maximum of 100m E to W by 40m transversely. The easternmost area contains two tank blocks and the possible weapon pit. It measures 40m NNE-SSW by 30m transversely. All three areas are bounded on their northern sides by the river bank, and are as marked in red on the accompanying map. The monument is of national importance as a well-preserved element of the Cowie Line, one of the strategic stop-lines of the anti-invasion defences of the Second World War. The individual features of the monument are well preserved and provide a concrete expression of an important period in British history.
- 2.2 The proposed development is within the estate of Ury House (NO88NE0104), containing the remains of a designed landscape possibly dating back to the 1700s. The house is B Listed Country house by John Baird of Glasgow, 1855, with a wing added in 1884 by an unidentified architect. The gardens have a buttressed, stepped, channelled and rock-faced terrace wall. The house had an ice-house (NO88NE 32.15; Buxbaum 1992, 7). Immediately north of the current site is a circular cropmark (NO88NE0113 possibly representing the site of a small roundel of planted trees which are shown on the 1st and 2nd edition OS map is visible on vertical aerial photographs taken in 1977 and 1988.
- 2.3 At Redcloak (NO 8579 8716), 700m WSW of the west edge of the current site is a field system of pits, possible roundhouses and an unenclosed settlement identified as a cropmark on aerial photographs.
- 2.4 At Glen Ury WNW of the proposed site is an area of hut circles and clearance cairns (NO88NE 73) identified from aerial reconnaissance.
- 2.5 There is an earthwork or possible Roman camp (NO88NE 7) at Fetteresso Glebe. The evidence for the siting of this 'camp' seems to derive ultimately from Barclay's sketch-map of 1785 on which it is shown as a square with rounded corners, although it is mentioned as early as 1722 in Camden's Britannia. The Name Book authorities remember the site being called 'The Camp' about 1800 but the ground was already under cultivation and no remains were evident. Crawford thought the site too narrow for a Roman camp, or even a normal-sized Roman fort and suggested that it was probably a native fort (Barclay 1792, 566; Crawford 1949; Name Book 1865, 10,248; Jones 2011, 335). The area is now a housing estate.
- 2.6 A copper alloy ewer (NO88NE 11) was found at Glen Ury in 1857. A sketch by the surveyor shows this to be a medieval tripod ewer. It was found two feet below the surface and was broken by the finders but the pieces were preserved at Ury House (OS Name Book 10, 198).
- 2.7 St Ciaran's Well a chalybeate well (NO88NE 17) is near the distillery at the west end of Mineral Well Road, immediately below the Glenury railway viaduct. It is an elegant fountain of Peterhead granite into which once ran the water of chalybeate spring for

many years famous for its health-giving properties. The fountain was built on the site of the old holy well of St Kieran which dried up when the supply was cut to build the fountain and it was impossible to find it again (Morris and Morris 1982, 122).

- 2.8 Industrial remains in the area include Glen Ury railway viaduct (NO88NE 60) 400m south of the current site (Hume 1977, 223) and Glen Ury Distillery founded c. 1836 by Captain Barclay. A much altered group of buildings, of which the oldest is probably a 3-storey, 10-bay range of malting floors survive. There are twin detached kilns linked to the malting floors by gangways (ibid; NO88NE 59).
- 2.9 The Aberdeen Western Peripheral route is due to terminate 200m east of the eastern side of the proposed development. Archaeological work has been carried out along the line of the route; AOC carried out a watching brief of trial pits in 2008 (NO89SE0089) but little of archaeological significance, CFA Archaeology have carried out an evaluation in 2013 of this section of the route and an excavation is ongoing at time of preparing this WSI (CFA forthcoming).
- 2.10 Ury or Urie appear on the 17th-century Blaeu and Gordon maps and Ury House on the 19th-century maps. The First Edition OS map shows the area as farmland divided into several fields with an old field boundary still marked with a line of trees. These persist into the 2nd and 3rd OS and the track across the site from the road to the east was realigned between the 1st and 2nd OS maps. There was a band of trees running along the east edge of the site adjacent to the road.
- 2.11 An archaeological evaluation was carried out at the development immediately south of this proposed development and one pit was excavated; an early to middle neolithic radiocarbon date of 3241-3140 cal BC was obtained for a sample of charcoal from the hearth (Cameron 2014). On the west side of Ury House, an evaluation by Cameron Archaeology at East Lodge produced no archaeological finds or features (Lenfert 2014).

3 THE EXCAVATION



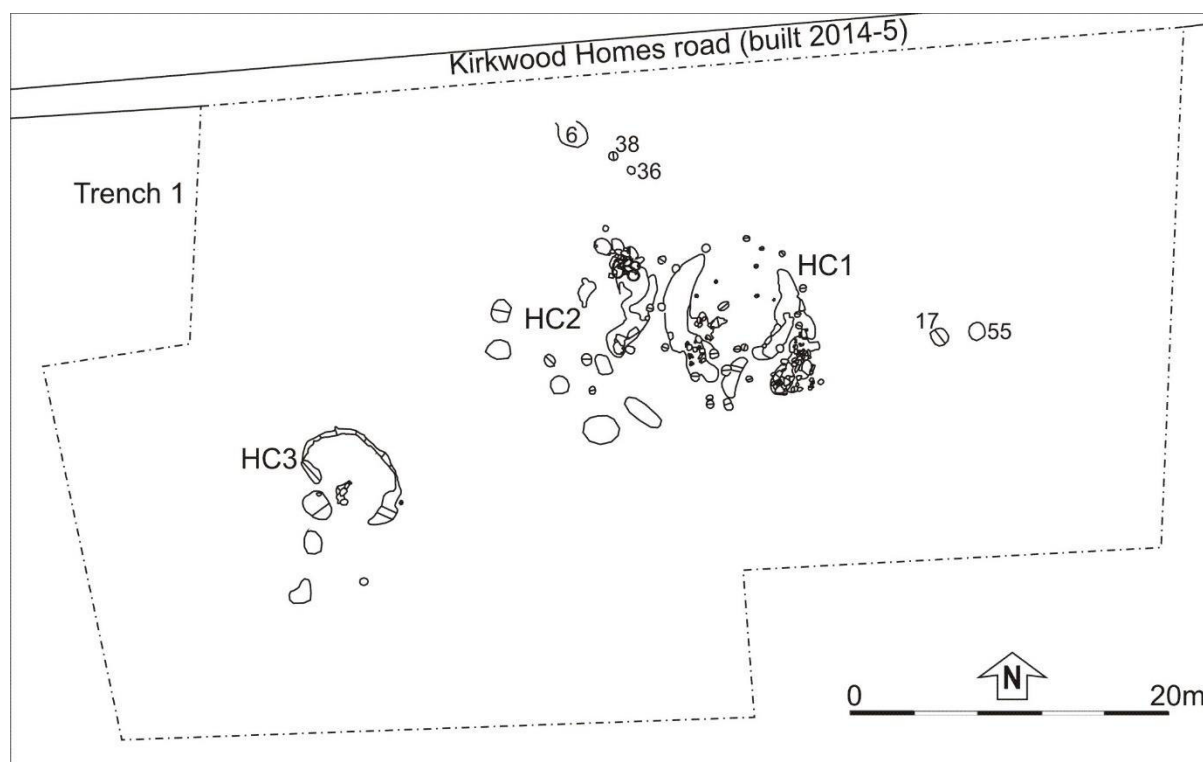
Illus 2 Excavation areas (copyright Kirkwood Homes)

The East Lodge excavation area (Illus 2) occupies a gentle to moderately sloping hillside around c.40-50m OD which crests NNE of the site around 120m OD. Land use in the area has traditionally been agricultural or pastoral in nature, with the exception of the often steep and heavily wooded natural corridor bordering Cowie Water. At the time of excavation, Area 1 was fallow and Area 2 was sown with barley.

The fast moving Cowie Water passes within 200m SW of the site en route to the bay, and currently still follows its natural course, except at the seafront, where it is now channelled into the North Sea through a concrete viaduct. Despite what initially appeared to be an exposed location for settlement, time spent onsite reveals that, in fact, it is sheltered from prevailing winds by the higher ground to the north, with heavy weather and higher winds often funnelled down the valley on the southwest side, an occurrence noted more than once by the authors.

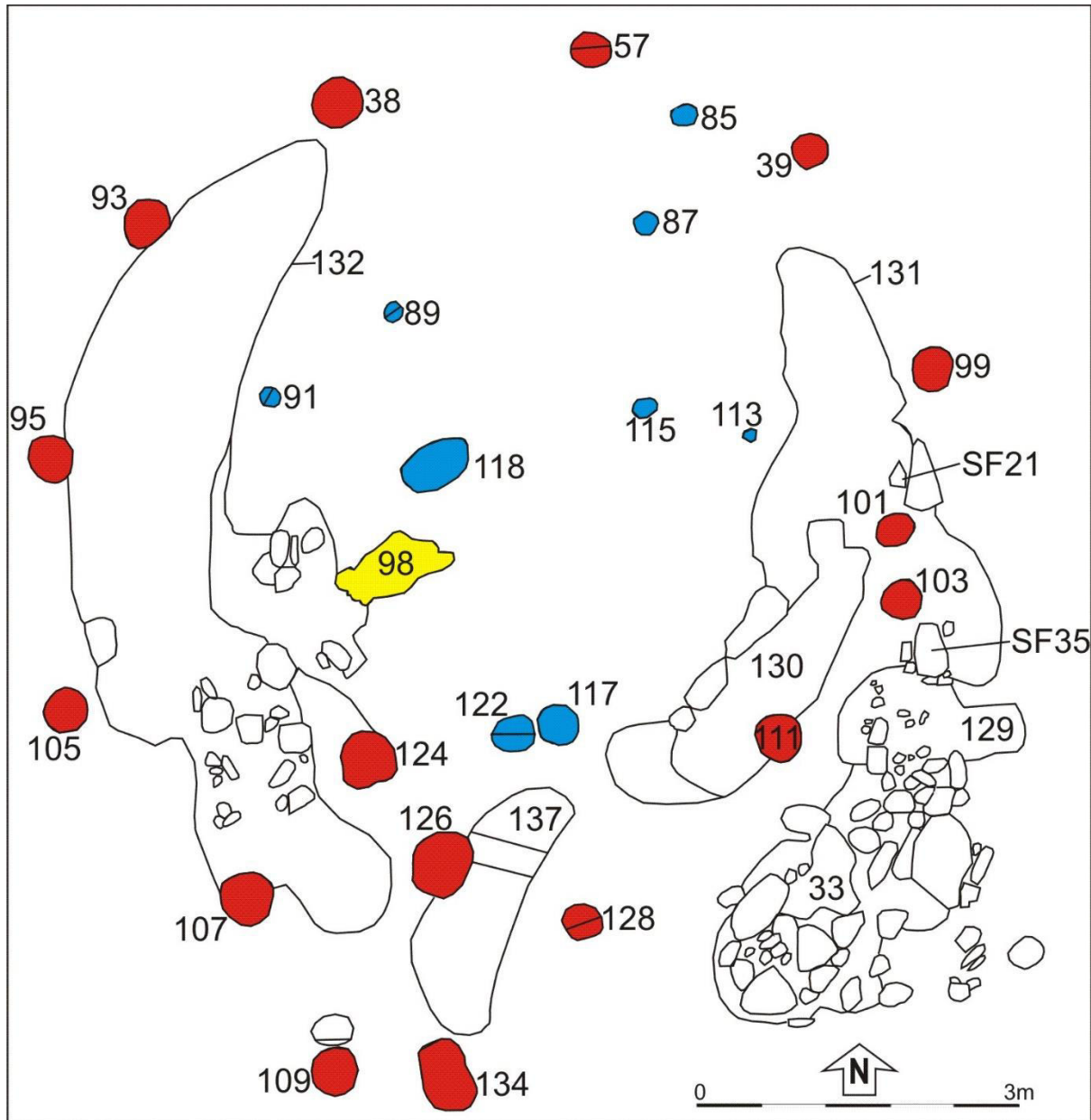
The site location affords extensive views consisting of three primary aspects: a.) the immediate area across the valley, including modern day Stonehaven, over towards Kirkton of Fetteresso situated within the hillside opposite (where Bronze Age activity has been recorded – Cameron 2014), b.) inland towards the summits of Cairn Mon Earn (9.5km distant, 378m OD, prominence of 278m) and Kerloch (17km distant, 534m OD, prominence of c.250m) and finally c.) coastal vistas towards nearby Stonehaven Bay (1.5km SE) and Downie Point above the natural harbour (2.6km).

These views would have remained more or less intact regardless of past tree cover, especially towards the coast and valley opposite. In a maritime sense, it should also be noted that Stonehaven Bay forms the largest and most protected natural harbour along some 90km of coast between the Firth of Tay and Aberdeen. The coastline in this area is often exposed and windswept, such as at St. Cyrus, or bordered by steep sea cliffs, e.g. Fowlsheugh, thus adding a pragmatic element to settlements near this harbour.



Illus 3 Post-excavation plan showing Area 1

The excavations took place in two trenches – primarily Trench 1 which contains three circular structures and the bulk of the finds and features, and the smaller Trench 2 (Illus 2). Area 1 (SW Corner - NO 86633 87398) is located on a gentle slope above Cowie Water, some 53m above sea-level with an area of c.2100m², is broadly rectangular in shape, and measures 64 E-W x 39m N-S at the maximum extent of machine excavation 10m from the last known feature. Area 2 (SW Corner – NO 86420 87460) is considerably smaller with a cleared area of c.340m², measuring 19m N-S x 18m E-W. Area 2 is c.42m above sea-level, and is located 210m WNW of Area 1. It contains one pit and one deposit within a natural depression.



Illus 4 Plan Hut Circle 1, main posts (red), secondary or internal posts (blue) and hearth (yellow)



Illus 5 Post-excavation view of Hut Circle 1; facing S

3.1 Area 1: Hut Circle 1 (HC1)

Hut circle 1 is 8.5m E-W and c 10m N-S. It consists of a ring ditch with stonework in situ and a ring of primary post-holes), a group of secondary (or more likely) internal post-holes and an off-centre hearth.

3.11 Stone Foundations: 033, 061, 062, 130

The foundation trenches or platform cut for Hut Circle 1 ranged from a brown silty-sand, quite close to the subsoil in description, to a darker, greyish-black sandy silt. Charcoal inclusions and flecking remained slight to moderate throughout most of the foundational features, with the exception of 083/130 (below) where possible reuse as a kiln appears to have taken place in the eastern half; sample analysis and radiocarbon dating during post-excavation will clarify the phasing and use of this feature. Large stone infill within these features was consistent. The detrimental effects of ploughing were clear on the upper foundation levels, which contained extensive stone disturbance, while in the undisturbed lower levels and bases of cuts, approaching 0.5m maximum depth, foundation stones were still deposited in an irregular, unsorted manner without signs of a coherent stone course.

3.12 HC1 Postholes (clockwise from N): 057, 39, 99, 101, 103, 111, 128, 126, 107, 105, 95, 93, 38 and possible entrance 124, 126, 109, 134

The main structure consists of at least 13 main post-hole bases, 0.4-0.45m wide and generally surviving up to 0.25m deep. Most have one homogeneous fill of grey-black sandy silt with no evidence of post-pipes or wood stains. Two possible post-hole bases 109 and 134 were shallower at 0.13m deep and may have formed part of an entrance. Two larger shallow post-hole or pit bases 124 and 126 may be associated with this entrance or part of the internal structure.

The spacing and sizing of the external postholes in Hut Circle 1 remains largely uniform from the SSW to the ESE arcs, with nine postholes spaced on centres c.2.1-2.2m apart representing a circular structure with an internal diameter of approximately 7.8m (Illus 4, 5).



Illus 6 SSW post-hole bases 109 (left foreground) 134 (right foreground); facing NNE

3.13 Internal Posts: 85, 87, 89, 91, 113, 115, 117, 118, 121

In the interior of HC 1, nine post-hole bases probably represent internal partitioning or fittings. Feature 118 may be the truncated remainder of a feature or may be natural stone hole. Features 122 and 117 were shallow (0.07 and 0.11m deep) and may have been the bases of truncated post-holes associated with the entranceway..

3.14 Internal pits and features 137, 98, 130 (possible kiln)

The remains of possible hearth, 98, offset c.1.2m SW from the centre of the structure (Illus 4) measured some 0.56m NS x 1.1m EW x 0.12m deep, with a fill consisting of an ashy, greyish-black to brownish-grey sandy-silt, which was heavily mottled and mixed. Rounded and angular stones within showed clear evidence of being fire-cracked but the fill contained only flecks of charcoal.

On the eastern periphery of the structure, 130 was a shallow cut, 1.4m N-S, 0.6m E-W and 0.15m deep filled with charcoal fill (Illus 4). A large lump of unfired clay, some 0.15m in length, was sitting on the natural (possibly a collapsed and unfired vessel), while several large pottery fragments (SF28) were located c.0.25m west along the edge of the cut. The remains of a vessel possibly fired *in-situ* were discovered along with a fragment of a flat, stone slab possibly used as a base support during firing. The interpretation of this feature will be assisted by the analysis of the samples and pottery from this feature.



Illus 7 Post-excavation view of Hut Circle 1 showing main post-holes and more ephemeral internal post-hole bases; facing S



Illus 8 Feature 130 charcoal fill 83 with pottery and unfired grey clay lump; facing W



Illus 9 Pottery base with stone SF29 in situ feature 130; facing N

3.15 External pits and features: 33 & 129

Stonework 33 measures 2.1m EW x 6.0m NS x 0.23m deep (Illus 4) and is an external platform or foundation on the SE side of Structure 1



Illus 10 Stones 33 and 129 (centre right); facing N

3.16 Pit N of HC1 (Illus 3)

Pit 38 (fill 37) measured 0.45m diameter x 0.26m deep, filled with a dark brown sandy silt with consistent charcoal flecking. This feature is interpreted as a pit, with straight sides and a rounded base. It is isolated, though its location near the temporary road built by Kirkwood homes in 2014 may have cut through further features. No additional features were found in evaluation trenches on the N side of this road.

3.17 Pits E of HC1 (Illus 3)

Cut 55 was sub-circular in shape, 0.6m NW-SE x 1.0m NE-SW x 0.15m deep, consisting of a brownish-black silty sand overlying several dumped fire-cracked stones up to 0.2m across, without evidence of in-situ burning. The cut is irregular in shape and no finds were recovered and it is possible that this is a natural stone-hole. Cut 17 measured 0.9m in diameter and was filled with 16, a brownish-black silty-sand with gritty-gravel inclusions with no finds. This feature had a clearer, more defined cut than 035, with steep sides merging into a flat base, with a rounded break at the surface.

3.2 Hut Circle 2 (HC2)

Immediately west of HC1, HC2 may be viewed, general speaking, as a more poorly preserved, heavily truncated example of HC1. The surviving foundations exist as an arc measuring 5.8m NS x 1.6m EW x 0.25m deep. Several small sherds of pottery were

recovered from this context. It was noted that in comparison to HC1, the fill of the foundation trench for HC2 was largely rock or boulder-free, suggesting that perhaps HC2 was first abandoned and stone robbed for later rebuilding efforts on a newer HC1, several metres east. Despite being heavily ploughed out on the western periphery, HC2 is largely well-defined on the eastern half, with postholes 065, 071, 073, 075, 077, 079, 081 being recorded at generally regular intervals c.1.8 to 2.2m. HC2 also contains evidence for a hearth 067/069 which measures 0.9m NS x 0.6m EW x 0.16m deep, containing a mixed deposit of greyish-black silty-sand with charcoal inclusions.



Illus 11 HC2 facing N

3.3 Structure 3

Located in the far south-western corner of Area 1 (Illus 3), structure 3 (Illus 12) represents a marked departure from the previous two roundhouses. This markedly less robust structure is characterised by a D-shaped northern arc, measuring 6.8m in a NW-SE orientation with a narrow foundation trench averaging some 0.25m in width and dropping to below 0.10m in areas. The terminals of this small enclosure flare out at each end, the western terminal, 020, appears as a sub-oval pit measuring 1.48m EW x 0.66m NS x 0.19m deep. The pit contained substantial charcoal remains which were sampled <52> and also contained a possible worked stone SF33.

Some 0.50m south, outside the structure, is 021, a substantial pit entirely filled with fire-cracked stone to a depth of 0.75m deep with a maximum diameter of 1.6m. Although sub-surface, this feature appears similar in manner to Neolithic or Bronze Age burnt mounds which were used for cooking, textile dyeing or perhaps leatherworking. The stone content was so dense it was only possible to fill half a sample bag <56> though this contains a high charcoal content for possible dating.

At the other terminal, 018 measures 0.54m NW x 6.5m SE x 0.16m in depth with much lighter charcoal flecking and a number of upright tabular stones which appear to represent

packing for postholes, yet no convincing evidence for these was identified. Again, this is perhaps due to machine ploughing and site-disturbance.



Illus 12 Structure 3 in SW corner of Area 1. Note large stone-filled pit (144) in lower left.

To the east of Structure 3, pit 141 is strikingly similar to 149, with an interspersed fill of fire-cracked stone, but with less charcoal found in smaller quantities against the cut natural. This pit measured 1.55m EW x 1.25m NS x 0.80m deep.



Illus 13 141 half sectioned; facing

3.4 Trench 2: Pit

During the evaluation an hourglass shaped feature was revealed and sectioned. During the excavation one half of this feature was revealed to be natural and the southern half formed the base of a pit. The pit, 53 (Illus 14) consisted of a sub-circular fill 1.7m NS x 1.5m EW x 0.13m deep. The cut consisted of a gently-dished, irregular base with very shallow sides and break and the fill contained prehistoric pottery SF2 and SF53.



Illus 14 Post-excavation view of truncated pit 53 in Area 2.

3.5 The Finds

Hut circle 1 produced a number of small finds, including decorated sherds from (SF28) and a complete base SF29, both from kiln 083. Alongside a first saddle quern fragment recovered during the excavation phase, a large section (c.75% intact) of a second saddle quern was identified in 033 in the eastern half of the foundation trench (Illus 4).

A possible worked quartz (SF31) was found in 135, below floor trample (fill 31) in HC1. A lithic core SF23 was identified in the fill 033, also on the eastern half of HC1. SF32, a flint flake, was identified in pit fill 029 c.4m south of HC1 and HC2. On the west side of HC1, a partial arrowhead made from what appears to be mudstone was recovered from the fill of posthole 94. Three possible stone tools - SF25 (60), SF26 (33) and SF33 (20) show signs of use, but will need to be examined in post-excavation to comment any further.

However, the stone carving which appears to have taken place onsite is of particular interest. Three pierced stones, SF20/fill 10 and SF24/fill 62 and one complete stone SF10 found during evaluation phase (Lenfert 2015: Illus 5) have been tentatively identified as loom weights. The first cup-marked stone, SF27 is a simple cup-mark carved stone within a small portable schist slab from 62, the fill which abuts fill 33 in the eastern half of HC1.

The junction of 62 and 33 in the eastern interior of Hut Circle 1 is where a remarkable double-sided, double-carved cup and ring-marked stone (SF21 - Illus 15) was found within the foundation of HC1.



Illus 15 Double-sided, double-carved, portable cup and ring-marked stone discarded in foundation trench 33, SF21.

Archaeologically, cup-marked stones or rocks are a relatively common form of Neolithic or Bronze-Age prehistoric art (c.4000-1200BC) within an Atlantic European or Mediterranean context, found in Ireland, the UK, France, the Iberian Peninsula and as far afield as Sardinia and Switzerland. They are typically carved on large natural outcrops or boulders, and are therefore not portable. A more intricate variation with a concentric ring surrounding the cup, with the possible addition of a gutter or channel extending outwards are also known throughout this distribution area, albeit in smaller numbers. While there are 1717 examples of known or suspected cup-marked stones or rocks in Scotland (Canmore 2015a/2015b), the number of cup and ring-marked stones or rocks falls to 718 (Canmore 2015c/2015d).

The first carving which was initially visible during excavation (Illus 13) is referred to here as Side A, which comprises three concentric rings surrounding the cup without a radial channel or gutter. The outermost ring appears to be unfinished, while the lower portion of the stone contains less clearly defined rings. Once the stone was recorded and photographed, careful lifting surprisingly revealed an even more intricate carving on the reverse Side B. This carving appears to have been more skilfully executed, with five rings surrounding a cup, breached by a radial channel or gutter. Again, the outermost ring appears unfinished near the top (as photographed) while there appears to be possible wear or erosion along lower sections of the rings. Also notable, the lower left side of the stone contains an elongated cup or trough which may be interpreted as a 'horn' terminal similar to those found at Achhabreck, Argyll (van Hoek 1993:15).

It is with portable specimens of cup and ring-marked stones that the frequency of examples greatly diminishes. There are only two known examples which can be considered portable within 50km of East Lodge. This first is an example found in a field in 2001 at Tullo of Benholm (Canmore ID 294026), some 3km WSW of Gourdon, Aberdeenshire and 18km SSW of East Lodge. The find is now in the Marischal Museum, Aberdeen University. A brief description of the stone exists from Saville below:

The small slab of granite contains four cups: one with two complete rings around it, another with a ring and seven radials leading from it, and two others with partial rings. There appears to have been another possible larger cup, as two parts of three other rings survive but the remainder has broken off. The stone is 0.40m long by 0.25m wide and 0.08m thick. The cups vary from 100mm wide to 50mm wide. It may have come from field clearance so the original location is unknown (Saville 2006:16).

50km to the SW from East Lodge and c.3.3km SW of Aberlemno in Angus, a second portable cup and ring-marked rock was discovered on Baldardo Hill some 300m south of a cist grave (Benvie 2014: 2). This find was accessioned into the Meffan Museums Collections F2013.21. This indicates that the artefact is portable, yet no other information currently exists on this artefact, requiring further research. It appears neither stone mentioned above was found *in-situ*, and current research indicates SF22 is completely unique in nature. While a very small number of portable cup-marked stones have been recorded in Late Bronze Age domestic settings in Cornwall (Jones and Kirkham 2013:651), no other stones contain carvings on both sides. In addition, the stone from East Lodge was recovered from a secure archaeological context, rather than a stray or antiquarian find lacking provenance, while substantial charcoal deposits directly underneath SF22 will allow radiocarbon determinations to provide a date for the occupation of the hut circle and date of deposition for SF22.

4 RECOMMENDATIONS

A Post Excavation Research Design (PERD) will be produced detailing post-excavation costs which will be agreed by the client prior to post-excavation and publication.

5 REFERENCES

Benvie, R. 2014. 'Aberlemno, Baldardo Hill, Cup- and ring-marked rock', *Discovery Excav Scot*, (14) 2013. Cathedral Communications Limited, Wiltshire, England. p.32.

Canmore, RCAHMS, 2015a. Results for 'cup marked stone, Scotland' accessed at http://canmore.org.uk/site/search/result?SITETYPE=1502&SITECOUNTRY=1&per_page=96&site_results_page=1 as of 25/10/2015.

Canmore, RCAHMS, 2015b. Results for 'cup marked rock, Scotland' accessed at <http://canmore.org.uk/site/search/result?SITETYPE=502031&SITECOUNTRY=1> as of 25/10/2015.

Canmore, RCAHMS, 2015c. Results for 'cup and ring marked rock, Scotland' accessed at <http://canmore.org.uk/site/search/result?SITETYPE=502030&SITECOUNTRY=1> as of 25/10/2015.

Canmore, RCAHMS, 2015d. Results for 'cup and ring marked stone, Scotland' accessed at <http://canmore.org.uk/site/search/result?SITETYPE=1501&SITECOUNTRY=1> as of 25/10/2015.

Cameron, A. 2013. 'Land at Kirkton of Fetteresso, Stonehaven, Aberdeenshire, AB39 3UP, Archaeological evaluation report'. Unpublished report, Cameron Archaeology.

Cameron, A. 2014 'East Lodge, Ury Estate'. Archaeological evaluation report, Cameron Archaeology.

Jones, A. M. & Kirkham, G. 2013. 'From Landscape to Portable Art: The Changing Settings of Simple Rock Art in South-West Britain and its Wider Context'. *European Journal of Archaeology*, 16 (4) pp. 636-659.

Lenfert, R. 2015. 'Report on an Archaeological Evaluation for Phase 2B, East Lodge Ury, Stonehaven AB39 2PT - Site Code CA232'. Unpublished report, Cameron Archaeology.

Saville, A. 2006. Tullo of Benholm, Aberdeenshire (Benholm parish), findspot', *Discovery Excav Scot*, (7) 2006. Dorchester. p.16.

van Hoek, Maarten A. M. 1993. 'The spiral in British and Irish Neolithic rock art.' *Glasgow Archaeological Journal* 18.18: 11-32.

6 ACKNOWLEDGEMENTS

Thanks to Scott Leitch, Halliday Fraser Munro for initiating this project and to Jonathon Milne and John Lilley FM Ury Limited. Thanks also goes to Bruce Mann, Aberdeenshire Council Archaeologist for his advice during this project.

Cameron Archaeology
45 View Terrace
Aberdeen
AB25 2RS
01224 643020
07581 181057
cameronarch@btinternet.com
www.cameronarchaeology.com

APPENDIX 1 SMALL FINDS

SF no	Context	Description
1	8	Possible fragment of saddle quern
2	44	Prehistoric pottery
3	44	Prehistoric pottery
4	44	Prehistoric pottery
5	10	Prehistoric pottery
6	8	Prehistoric pottery
7	33	Prehistoric pottery
8	37	flint
9	33	flint
10	10	Stone ?loom weight
11	11	Prehistoric pottery
12	33	flint
13	26	flint
14	26	flint
15	27	flint
16	27	flint
17	18	flint
18	18	flint
19	18	Flint
20	10	Pierced stone
21	33	Carved cup and ring stone
22	33	Small stone found in cup mark (probably not a find)
23		discarded
24	62	Drilled stone
25	60	Possible tool/rubber stone
26	33	Stone with signs of pecking on one side
27	61	Cup marked stone
28	83	Pottery x 4

29	83	Base of pot
30	94	?stone arrowhead
31	135	?worked quartz
32	29	Flint flake
33	20	Possible hammer stone
34	147	Pottery x 2
35	33	Saddle quern
36	33	Pottery x 8
37	10	Pottery x 5
38	10	Pottery x 8
39	22	Pottery x 4
40	61	Pottery x 3
41	33	Pot rim
42	33	Pot x 1
43	60	Pot x 1
44	60	Pot x 3
45	60	Pot x 1
46	u/s	Shallow pottery vessel
47	61	Pot x 4
48	18	Possible worked stone
49	62	Pot x 1
50	61	Pot x 1
51	10	Pierced stone
52	10	Flint flake
53	43	Pottery x 8 (actually from excavation 52)

APPENDIX 2 CONTEXTS

NB: FCR = fire cracked rock, HC1 = Hut Circle 1, HC2 = Hut Circle 2, SF = Stuart Farrell, RL = Robert Lenfert, - = found to be natural deposit on excavation

NUMBER	FILL OF/FEATURE	DESCRIPTION
001	002	Fill of possible pit, dark brown sandy-silt with gritty inclusions >5%, Charcoal flecking/organic staining present. Located in Trench 1, Area 1, evaluation phase. 0.5m NS x 0.3m EW, sub-circular.
002		Cut of shallow pit 001
003	-	-
004	-	-
005	-	-
006	-	-
007	Deposit/HC2	Dark brown sandy-silt deposit, 5.8m NS x 1.6m EW x 0.25m max. depth. Sampled <16>. Overlies 063/070. NOTE: This number was used in Evaluation Phase for fill of pit. Pit fill and cut later renumbered as 073/074. SF.
008	HC2	Half of truncated ring-ditch – probable roundhouse. Fire cracked rock >20%, gravelly inclusions, overall shallow >25cm (see section 11 photos) Bulk Samples x2. EVALUATION PHASE
009	-	-
010	HC1, Western Half	Deposit in western half of ring ditch/roundhouse also truncated (F33 is the eastern half, below). Tabular stones up to 30cm/dia. and numerous fire-cracked rock in a dark, brownish-black sandy-silt with visible charcoal flecks up to small/moderate lumps of charcoal >4cm. Very mixed deposit with dumped material and redeposited natural. Bulk Samples x2 Small finds – pottery fragments, some quartz, square stone with drilled holes possible loom weight. Layer measures 6.2mNS x 2.5m EW x 0.10 – 0.15m max. depth. Overlies 061. Sampled <12>.
011	-	-
012	-	-
013	-	-
014	-	-
015	-	-
016	Fill of [017]	Fill of circular pit, 0.9m/dia. Dark-brown sandy-silt with unsorted gravel inclusions and sub-angular stones >10%
017		Cut of 016, steep sides, flat base, rounded edges. 0.9m dia. X 0.15m deep

018	Fill of [145]	EVALUATION PHASE: Fill of ring ditch, dark brown sandy silt, very gravelly, >35%, very heavily plough truncated/disturbed. Box section 45 was cut across feature, 0.3m x 1.0m, very shallow max 0.07m. 1x Bulk Sample. RL. EXCAVATION PHASE: Brown silty-sand with small to medium angular stones, charcoal flecking. Fill of [145]. Evidence for small upright stones, possible packing for posts, yet no cuts are seen for these. N & SE corners of feature were sampled. <53> and <55>, 2 bags each. Measures 0.54m NS x 6.5m overall NW-SE x 0.16m deep. SF.
019	Fill of [146]	Stone-filled pit measuring 1.6m NS x 0.55m x 0.16m max. depth. Consists of grey-black sandy-silt with moderate charcoal inclusions >15%. Possibly heavily-truncated hearth remains. Cut by [146]. Sampled <54> 2 bags. RL
020	Fill of [144]	Sub-circular fill of [144] 1.48m EW x 0.66m NS x 0.19m max depth. Small Find {33} stone tool recovered with slight evidence of pecking or hammering. Fill is a grey-black sandy-silt with extensive charcoal inclusions to c.0.05m/dia. From apparent in-situ burning, virtually free of gravel or stone inclusions. Overlies a gravelly, reddish-brown natural.
021	Cut by [149]	EVALUATION PHASE. RL: 'Flared' sub-circular deposit stemming from F18, appears as burning event or dumped deposits in relation to use of ring ditch/roundhouse. Darker brown, more organic in colour than F18, consistent charcoal flecking throughout. Angular stones with signs of fire-cracking on surface >15%. EXCAVATION PHASE. RL: Sub-circular fill of large, stone-filled pit measuring 1.46m NE-SW x 1.60m NS x 0.75m max depth. Surface deposit consists of a brownish-black sandy-silt overlying a large burnt stone and small boulder fill (approximately 90% stone, with air gaps and some soil in-between, with grey 'gley-like' inclusions at base indicative of nearing water table. Moderate charcoal lining edge of cut, which sharply tapers to pointy bottom. Stones appear to be burnt ex-situ and dumped or placed here. No finds. Sampled – 1 bag <56>.
022	-	-
023	-	-
024	Deposit	Measuring 1.0m NS x 1.15m EW x 0.12m max depth, this thin deposit of grey black-sandy silt contains fine charcoal flecking throughout. There is no evidence for a

		cut, nor for in-situ burning. Appears to be a cast-out lens of material from within the nearby structure/shelter immediately to the north. Sampled. RL.
025	Deposit	c.0.30m dia., this circular deposit consists of a grey-black sandy-silt with heavy charcoal with inclusions which initially appeared as a possible post, but was revealed to be a shallow circular deposit flaking apart easily from the natural subsoil underneath. Sampled 1 bag <58>. RL
026	Pit	Sub-circular deposit, 1.2m EW x .8m NS, small finds include debitage x2. Near-black deposit, largely free of stones, signs of burning, though perhaps dumped and not burnt in-situ. EVALUATION PHASE. RL. EXCAVATION PHASE SF: Brownish-black sandy silt fill of pit, well-sorted with angular burnt and unburnt stones and charcoal. Measures 1.10m/dia. x 0.15m deep. Sampled <50> 1 bag. Cut by [140]. Adjacent to 027. Fill of pit.
027	Cut by [141]	Feature consists of alternating dumped hearth material (FCR) infilled with a dark-grey sandy-silt within what appears to be a natural pit or depression measuring (sub-circular) area 1.55m EW x 1.25m NS x 1.27m deep. Bottom not completely excavated due to risk of stone fill collapsing, but was reached. NOTE: (27) overlies lenses (142) and (143) before bottoming out, perhaps indicating that feature was filled in stages rather than at once. RL.
028	-	-
029	Cut by [138] Mixes with (139)	Elongated irregular sub-circular pit-like dump measuring 1.5m EW x 0.9m NS x 0.24m deep. Mixes frequently with (139) within cut [138]. Fill consists of a dark sandy-silt, almost pure charcoal deposit at times, interspersed with gritty gravels and moderate to heavy FCR inclusions. Appears to be burnt ex-situ from either a hearth or work and later dumped here. Sampled <49> 2 bags. Finds – flint flake Small Finds {32}. RL
030	Cut by [109]	Fill of posthole [109], sampled 1 bag <37> Measures 0.44 NS x 0.42m EW x 0.12m deep. SF.
031	Deposit overlies [125]	Slight subsoil deposit interpreted as floor trample from HC1 measuring 2.0m NS x 1.2m EW overlying [125]. Not sampled. No inclusions. Fades out completely in area. RL.
032	Natural Deposit	Deposit measuring 0.7m NS x 0.5m EW x 0.05m deep, initially thought to be possibly part of ring ditch but revealed as sub/topsoil and not a feature. SF. NOTE:

		pottery sherds from (32) likely redeposited from (10) due to ploughing – RL.
033	Overlies (061)	<p>EVALUATION PHASE – RL: Eastern half of ring ditch/roundhouse. Cut is less defined in areas, fades out easily at edges but overall visible, especially when damp. Same as above, but lesser concentrations of tabular stones, charcoal.</p> <p>EXCAVATION PHASE – RL: The eastern half of Hut Circle 1 (the counterpart to western half HC1 (10) [9]), exists as an arc 2.1m EW x 6.0m NS x 0.25m deep (max). Overlies (061). Consists of a brown silty-sand, quite close to subsoil in appearance. Inclusions: small to medium/large rounded and angular stones and charcoal. SMALL FINDS: {21} The double-sided, double-carved cup and ring stone, aka ‘The Cup Stane’ {22} Quartz centre cup of {21} , and {23} lithic core. Sampled <13> <14>.</p>
034	-	-
035	Cut by [55]	0.6m NW-SE x 1.0m NE-SW x 0.15m deep sub-oval pit consisting of brownish-black silty-sand with small to large rounded and irregular stones, some of which are fire-cracked but no evidence of firing in-situ. NW side of feature reveals very poor cut, may represent erosion into natural. Sample <8> two bags. SF.
036	-	-
037	Cut by [38]	<p>Circular post, 0.3m/Dia. Evidence of in-situ burning and charcoal. NOTE: This was the second feature unearthed during the evaluation and was partially excavated before it was characterised/identified. EVALUATION PHASE. RL.</p> <p>EXCAVATION PHASE. RL. Fill of post hole measuring 0.45m/dia. x 0.26m deep. Dark brown sandy-silt with charcoal inclusions, with grey-black sandy-loam inclusions, poorly sorted gravelly grit present. Flint debitage present. RL.</p>
038		Cut of (37) – straight sided, rounded corners and rounded base, post-hole.
039	Cut by [56]	Fill of post-hole measuring 0.40m/dia. by 0.25m deep, grey-black sandy-silt with <10% gritty gravel inclusions. Charcoal abundant throughout. Sampled. RL.
040	-	-
041	-	-
042	-	-

043	Anthropogenic fill of natural deposit (tree-bole)	<p>EVALUATION PHASE RL: Hourglass-shaped deposit in Area 2, overall c.2m in length. Max width c.1.0m tapering in middle to >0.2m. Indeterminate as to whether this is part of a ring ditch, a linear ditch or a dump. Also heavily truncated, max depth c15cm. Dark organic soils with consistent charcoal flecking and small pebbles and fire cracked stones >20% Small finds include one 5cm sherd of pottery, black exterior with reddish inside, large inclusions. Several smaller, poorly preserved pottery sherds >2cm. Signs of worked stones (non-chert/flints) including a possible core from a mudstone-like material. Bulk Sampled x2.</p> <p>EXCAVATION PHASE, RL: Measuring 1.8m NS x 1.6m EW x 0.21m deep, this fill appears to represent opportunistic use of a natural tree-bole, not within a cut feature, which has indications of being an anthropogenic soil as several pottery sherds were recovered from (043). Fill consists of an organic grey-black almost peaty fill with sandy-silt inclusions and small to medium rounded stones. Sampled <6> 3 bags. NOTE: This was part of the singular hourglass-shaped feature noted during the evaluation, but cleaning revealed two discreet features (one tree-bole, one cut pit) next to one another, sharing some topsoil likely spread by ploughing. RL.</p>
044	--	AREA 2. Original feature number (F44) given to fills (43) and (52) and Cut [53] during evaluation phase, pre-excavation.
045	-	-
046	-	-
047	-	-
048	-	-
049	-	-
050	-	-
051	-	-
052	Cut by [53]	AREA 2. A grey-black silty-sand fill with small to medium rounded stones and charcoal flecking, measuring 1.7m NS x 1.5m EW x 0.13m deep forming a sub-circular pit. No finds. Sampled <7> 1 bag.
053		Cut of (52). Oval-shaped with a flat yet irregular-shaped base.
054	--	Was seen to cut (043) before deciding this cut was a natural tree-bole. No cut/no count for 054 therefore.

055		Cut of (35) 0.6m x 1m x 0.15m. Rectangular-shaped cut with irregular cut, steepish sides and a rounded base. Aligned NE-SW. Adjacent to [17]. SF.
056		Cut of (39), post-hole measuring 0.4m/dia. x 0.25m deep. Steep sides, round bottom. RL.
057	Cut by [58]	Fill of post hole measuring 0.39m/dia. x 0.20m deep. Fill is a greyish-black sandy loam with charcoal inclusions, one stone in fill, possible packing material.
058		Cuts (057) for post-hole in HC1. Steep sides, rounded edge and bottom. SF.
059		Cut of (33) Deposit in NE corner of HC1. SF.
060	Deposit	A dark-brown/black sandy silt with gritty inclusions and poorly sorted stones in NE end of HC1 interior. Measures in a slight arc some 3.0m NW-SE x 1.65m NE-SW x 0.12m deep. Interpreted as truncated remains of floor layer. No cut, overlies natural. RL.
061	--	Number used for small find {27} cup-mark carved on small portable schist slab. Unfinished project?
062	Deposit	This deposit extends through the greater portion of the eastern half of HC1, and underlies the Cup Stane {21} where (062) slightly undercuts (033). It is a dark-brown sandy loam with charcoal inclusions and overlies 082. 2.0m EW x 6.0m NS x 0.23m deep. Sampled. RL
063	Deposit	A grey silty-sand with charcoal flecking which underlies (007) and contains rounded and angular stones in NE corner of HC2. Measures 1.0m NS x 0.8m EW x 0.75m max depth. Overlies natural. Sample <17>. SF.
064	HC2	Floor
065	HC2	Fill of p/h
066	HC2	Cut of p/h
067	HC2	Hearth material?
068	HC2	Cut of HC2
069	HC2	Cut of hearth HC2
070	HC2	Possible entrance
071	HC2	Fill of p/h 72
072	HC2	Cut of p/h
073	HC2	Fill of p/h 74
074	HC2	Cut of p/h

075	HC2	Fill of p/h 76
076	HC2	Cut of p/h
077	HC2	Fill of p/h 78
078	HC2	Cut of p/h
079	HC2	Fill of p/h 80
080	HC2	Cut of p/h
081	HC2	Fill of p/h 82
082	HC2	Cut of p/h
083	HC1	Charcoal under 33/62
084	HC1	NE corner HC fill of 85
085	HC1	Cut of p/h
086	HC1	Fill of p/h 87
087	HC1	Cut of p/h
088	HC1	Fill of p/h 89
089	HC1	Cut of p/h
090	HC1	Fill of possible p/h 91
091	HC1	Cut of possible p/h
092	HC1	Fill of p/h 93
093	HC1	Cut of p/h
094	HC1	Fill of p/h 94
095	HC1	Cut of p/h
096	HC1	Hill of hearth 98
097	HC1	Fill of hearth 98
098	HC1	Cut of hearth
099	HC1	p/h fill 100
100	HC1	p/h cut
101	HC1	p/h cut
102	HC1	p/h fill of 101
103	HC1	p/h
104	HC1	Fill of 103
105	HC1	p/h

106	HC1	Fill of 105
107	HC1	p/h
108	HC1	Fill of 107
109	HC1	Post
110	HC1	Fill of p/h 111
111	HC1	p/h cut
112	HC1	Fill of p/h 113
113	HC1	p/h cut
114	HC1	Fill of 115
115	HC1	p/h cut
116	HC1	Fill of p/h 117
117	HC1	Cut p/h
118	HC1	Post packing, post?
119	HC1	Fill of 118
120	HC1	Stone packing in 118
121	HC1	Fill of p/h 122
122	HC1	Cut p/h
123	HC1	Fill p/h 124
124	HC1	Cut of p/h or small pit
125	HC1	Fill of p/h 126
126	HC1	Cut of p/h
127	HC1	Fill of p/h 128
128	HC1	Cut of p/h
129	HC1	Floor by entrance Se HC1
130	HC1	Cut of ?kiln
131	HC1	Cut to E side HC1
132	HC1	Cut to W side HC1
133	HC1	Fill of p/h 134
134	HC1	Cut of p/h
135	HC1	Fill of possible kiln 137
136	HC1	Base deposit kiln 137

137	HC1	Cut of possible kiln
138		Pit W of HC1 29/139
139		Pit W of HC1 29/138
140		Cut of pit W of HC2
141		Cut of pit 27/142/143 W of HC2
142		Fill of pit 141
143		Fill of pit 141
144		Cut of 20
145		Cut of structure 3
146		Cut of feature in centre structure 3
147		Fill of p/h 148
148		Cut of p/h
149		Cut of pit (fill 21)

APPENDIX 3 SAMPLES

Sample no	Context	Description
1	44	Black loam
2	14	Black loam
3	10 ring ditch 9	Black loam
4	11	Black loam
5	8 ring ditch	Black loam
6	43	Grey black peat 10kg
7	52	Pit fill 5kg
8	35	Pit fill 10kg
9	57	Posthole fill 5kg
10	??	??
11	59	Floor deposit HC 1 5kg
12	10	Floor deposit HC 1 5kg
13	33	Foundation 5kg
14	33	Charcoal under cup stone SF21 5kg

15	62	Charcoal under cup stone SF21 3kg
16	7	Floor? 10kg
17	63	Above stone below 7
18	64	Deposit centre of HC1
19	62	Deposit under 33 5kg
20	68	Post hole 34 5kg
21	67	Hearth 5kg
22	75	Post hole 5kg
23	79	Post hole 5kg
24	60	Floor HC 1 5kg
25	83	Charcoal under 33 5kg
26	61	Fill wall trench 5kg
27	61	Wall trench 2 x 5kg
28	92	Posthole
29	94	Post hole
30	83	Clay from 83 (kiln)
31	96	Hearth
32	100	Post 2.5kg
33	102	Post 2.5kg
34	104	Post 2.5kg
35	105	Post 2.5kg
36	107	Post 2.5kg
37	30	Post 2.5kg
38	110	Posthole
39	116	Posthole 5kg
40	119	Posthole 5kg
41	121	Posthole
42	123	Posthole
43	125	Posthole
44	127	Posthole

45	133	Posthole
46	129	Entrance trample?
47	135	kiln
48	136	Possible kiln
49	29	Dump/pit 5kg
50	26	Pit
51	27	Circular deposit
52	20	Oval deposit 10kg
53	18	Structure 3 10kg
54	19	10kg
55	18	10kg
56	21	Pit 5kg
57	24	Dump 5kg
58	25	Post 5kg
59	38	post
60	39	Post 5kg
61	147	posthole

APPENDIX 4 PHOTOGRAPHS

PHOTO ID	DIRECTION FACING	COMMENTS
DSC_4573	NE	General View, commencing excavation
DSC_4574	NE	General View, commencing excavation
DSC_4575	NE	General View, commencing excavation
DSC_4576	N	General View, commencing excavation
DSC_4577	N	General View, commencing excavation
DSC_4578	NW	General View, commencing excavation
DSC_4579	NW	General View, commencing excavation
DSC_4582	NE	General View, commencing excavation

DSC_4583	NE	General View, commencing excavation
DSC_4584	NE	General View, commencing excavation
DSC_4586	SW	Machining area to 10m buffer
DSC_4587	SW	Machining area to 10m buffer
DSC_4589	E	Freshly stripped expansion area
DSC_4590	SE	Freshly stripped expansion area
DSC_4591	S	Freshly stripped expansion area
DSC_4592	SW	Machining area to 10m buffer
DSC_4593	SW	Machining area to 10m buffer
DSC_4597	S	Machining area to 10m buffer
DSC_4603-49	N	Pre-excavation views of Area 1 with ranging rods in centre of Hut Circle 1 (HC1)
DSC_4658	E	Pre-excavation views of Area 1 with ranging rods in centre of Hut Circle 1 (HC1)
DSC_4659	E	Pre-excavation views of Area 1 with ranging rods in centre of Hut Circle 1 (HC1)
DSC_4660	E	Pre-excavation views of Area 1 with ranging rods in centre of Hut Circle 1 (HC1)
DSC_4663	E	Pre-excavation views of Area 1 with ranging rods in centre of Hut Circle 1 (HC1)
DSC_4666	N	Clearing back Area 2 pre-excavation
DSC_4667	N	Clearing back Area 2 pre-excavation
DSC_4668	N	Clearing back Area 2 pre-excavation
DSC_4670	N	Feature 44 pre-excavation photo, Area 2
DSC_4672	N	Feature 53 Cleaned back and half-sectioned. Sole surviving feature in Area 2 was originally 'Figure of Eight' in plan, but excavation revealed it consisted of two discreet pits.
DSC_4673	N	Feature 53 Post-excavation
DSC_4675	S	Feature 54 Post-excavation
DSC_4677	S	Feature 54 Post-excavation
DSC_4679	S	General view of F53 & F54
DSC_4681	E	Pre-excavation shot of pits in East half of Area 1
DSC_4682	N	Pre-excavation shot of post F39, N. perimeter HC1

DSC_4683	N	F37, Post-ex view of section
DSC_4684	NW	F37, oblique view
DSC_4685	N	F39, Post-ex view of post
DSC_4689	N	F39, Post-ex view of post
DSC_4690	E	General working shot, South-eastern half of Area 1
DSC_4695	N	Pre-ex view of F57, post
DSC_4700	N	Pre-ex view of F57, post
DSC_4701	E	View of pit relationships in E half, Area 1
DSC_4702	NE	View of pit relationships in E half, Area 1
DSC_4703	N	F40, post-ex view of shallow feature or deposit
DSC_4704	N	F40, post-ex view of shallow feature or deposit
DSC_4710	N	F57, post-ex view, natural lighting
DSC_4712	N	F57, post-ex view, strobe lighting
DSC_4718	N	F39, post-ex view, strobe lighting
DSC_4719	SE	Eastern half of HC1 after cleaning, excavation in-progress
DSC_4720	NE	View of HC1, excavation in-progress
DSC_4721	NE	Detail of HC1, Western half, excavation in progress
DSC_4722	N	General view of HC1, excavation in-progress
DSC_4723	N	General view of HC1, excavation in-progress
DSC_4724	N	General view of Western half, HC1, excavation in-progress
DSC_4726	W	Initial discovery of cup & ring marked stone, eastern half of HC1
DSC_4727	W	Cup & ring marked stone during light cleaning
DSC_4728	W	Cup & ring marked stone during light cleaning
DSC_4729	W	Cup & ring marked stone in-situ shot
DSC_4730	W	Cup & ring marked stone in-situ shot
DSC_4731	N	Cup & ring marked stone in-situ 'location' shot, general view looking north
DSC_4732	N	Cup & ring marked stone in-situ 'location' shot, general view looking north
DSC_4735-44	E	Cup & ring marked stone in-situ shot

DSC_4745	E	Cup & ring marked stone in-situ shot, detail of centre quartz frag
DSC_4747	E	Cup & ring marked stone in-situ shot
DSC_4748	E	Cup & ring marked stone in-situ shot
DSC_4749	E	Cup & ring marked stone in-situ shot
DSC_4750	SE	Cup & ring marked stone in-situ shot
DSC_4761	E	General view of HC1, cup marked stone is under blue tarp
DSC_4762	N	General view of HC1, cup marked stone is under blue tarp
DSC_4763	N	General view of HC1, cup marked stone is under blue tarp
DSC_4810	S	General view of HC1, cup marked stone is under blue tarp (Note – shot blurry/out of focus)
DSC_4812	S	General elevated view of HC1 with cup-marked stone under blue tarp
DSC_4816	S	General elevated view of HC1 with cup-marked stone under blue tarp
DSC_4817	S	General elevated view of HC1 with cup-marked stone under blue tarp
DSC_4822	E	Cup-marked stone, photo board and small scale in place
DSC_4823-87	E	Various views of cup-marked stone in situ, using different oblique strobe or natural lighting techniques
DSC_4888	SE	General view of eastern half of HC1
DSC_4889	SE	General view of eastern half of HC1
DSC_4890	S	General view of western half of HC1
DSC_4892	SE	General view of eastern half of HC1
DSC_4895	E	General view of eastern half of HC1
DSC_4900-08	E	Various views of cup-marked stone in situ, using different oblique strobe or natural lighting techniques
DSC_4909	SW	Working shot of HC1, western half
DSC_4916	S	Working shot of excavation in HC1
DSC_4918-24	E	Various views of cup-marked stone in situ, sunlight providing oblique lighting
DSC_4925-37	SE	Archaeologist lifting cup-marked stone

DSC_4938	--	Cup-marked stone lifted
DSC_4939	--	Cup-marked stone lifted
DSC_4940-59	E	Ridges left by reverse carving on cup-marked stone
DSC_4960-2	W	Ridges left by reverse carving on cup-marked stone
DSC_4963	--	Cup-marked stone lifted
DSC_4965-81	W	Elevated excavation shot of western half of HC1
DSC_4982	N	General view of western half of HC1
DSC_4984	NW	General view of western half of HC1
DSC_4985	NW	General view of western half of HC1
DSC_4986	E	General view of south-eastern half of HC1
DSC_4987-9	NW	General view of western half of HC1
DSC_5000-09	--	Reverse of cup and ring marked stone
DSC_5010	--	'Front' or first exposed side of cup and ring marked stone
DSC_5012	--	'Front' or first exposed side of cup and ring marked stone
DSC_5247-52	N	Eastern half of HC1
DSC_5254	E	Detail shot of stones south of baulk, eastern half of HC1
DSC_5255	NE	Detail shot of stones south of baulk, eastern half of HC1
DSC_5256	E	Detail shot of stones south of baulk, eastern half of HC1
DSC_5257	E	Detail shot of stones south of baulk, eastern half of HC1
DSC_5258	E	Detail shot of stones south of baulk, eastern half of HC1
DSC_5259	SE	Detail shot of stones south of baulk, eastern half of HC1
DSC_5260	SE	Detail shot of stones south of baulk, eastern half of HC1
DSC_5261	SE	Detail shot of stones south of baulk, eastern half of HC1
DSC_5262	N	Section view of eastern half of HC1, baulk in place
DSC_5263	N	Section view of eastern half of HC1, baulk in place
DSC_5264	N	Section view of eastern half of HC1, baulk in place
DSC_5265	N	Section view of eastern half of HC1, baulk in place
DSC_5266	N	Section view of eastern half of HC1, baulk in place
DSC_5267	N	Section view of eastern half of HC1, baulk in place
DSC_5268	N	General shot of eastern half of HC2, post-ex
DSC_5269	N	General shot of eastern half of HC2, post-ex

DSC_5270	N	General shot of eastern half of HC2, post-ex, showing relationship of posts
DSC_5271	N	General shot of eastern half of HC2, post-ex, showing relationship of posts
DSC_5272	N	General shot of eastern half of HC2, post-ex, showing relationship of posts
DSC_5273	N	General shot of eastern half of HC2, post-ex, showing relationship of posts
DSC_5274	N	General shot of eastern half of HC2, post-ex, showing relationship of posts
DSC_5275	N	General shot of eastern half of HC2, post-ex, showing relationship of posts
DSC_5276	N	General shot of eastern half of HC2, post-ex, showing relationship of posts
DSC_5278-80	N	General shot of eastern half of HC2, post-ex
DSC_5281-88	NE	General shot of eastern half of HC2, post-ex
DSC_5289-94	N	F69, post-ex view
DSC_5295	N	F69, post-ex view (detail)
DSC_5296	N	F70, pre-ex
DSC_5297	N	F60, post-ex view of shallow post or post pad
DSC_5298	N	F60, post-ex view of shallow post or post pad
DSC_5299	N	F72, post-ex view of pit or post feature
DSC_5300	N	F72, post-ex view of pit or post feature
DSC_5301	N	F76 post-ex view
DSC_5302	N	F74 post-ex view
DSC_5303	N	F74 general post-ex view
DSC_5304	N	F78 post-ex view
DSC_5305	N	F78 post-ex view
DSC_5306	N	F80 post-ex view
DSC_5307	N	F80 post-ex view
DSC_5308	N	F82 post-ex view
DSC_5309	N	Eastern half, HC1, general view
DSC_5310	N	Eastern half, HC1, general view
DSC_5311	N	Eastern half, HC1, general view

DSC_5312	S	Eastern half, HC1, general view
DSC_5313	S	Eastern half, HC1, general view
DSC_5315	S	Eastern half, HC1, general view
DSC_5317	N	Central and northern half with posts in background , HC1, general view
DSC_5319	N	Central and northern half with posts in background , HC1, general view
DSC_5320	NE	General view of HC1, western half, with HC2 in background
DSC_5321	NE	General view of HC1, western half, with HC2 in background
DSC_5322	NE	General view of HC1, western half, with HC2 in background
DSC_5323	E	SE quadrant of HC1, general view
DSC_5324	E	SE quadrant of HC1, general view
DSC_5326	N	HC1, general view
DSC_5329	N	Northern half of HC1, general view
DSC_5330	N	Northern half of HC1, general view
DSC_5331	N	Northern half of HC1, general view
DSC_5332	W	Western half HC1 with HC2 in background
DSC_5333	SE	SE quad of HC1, general view
DSC_5334	SW	SE quad of HC1, general view
DSC_5335	SW	SE quad of HC1, general view
DSC_5336	SW	SE quad of HC1, general view
DSC_5337	SW	SE quad of HC1, general view
DSC_5338	SW	SE quad of HC1, general view
DSC_5339	W	SE quad of HC1, general view
DSC_5341	W	SE quad of HC1, general view
DSC_5342	W	SE quad of HC1, general view
DSC_5343	NW	SE quad of HC1, general view (blurry/out of focus)
DSC_5344	W	SE quad of HC1, general view
DSC_5345	W	SE quad of HC1, general view
DSC_5346	W	SE quad of HC1, general view

DSC_5347	W	SE quad of HC1, general view
DSC_5348	W	SE quad of HC1, general view
DSC_5349	W	HC1, general view
DSC_5350	NW	HC1, general view
DSC_5351	NW	HC1, general view
DSC_5352	N	HC1, general view
DSC_5354	N	HC1, general view
DSC_5356	N	HC1, general view
DSC_5357	N	HC1, general view
DSC_5358	N	HC1, general view
DSC_5359	N	HC1, general view, northern half
DSC_5363	N	Possible internal support/post, HC1
DSC_5367	S	Heavily burnt/ charcoal area, eastern half of HC1/in or adjacent to walling
DSC_5368	S	Heavily burnt/ charcoal fill (83), eastern half of HC1/in or adjacent to walling
DSC_5369	S	General view of HC1 with heavily burnt/ charcoal fill (83) in foreground, eastern half of HC1/in or adjacent to walling
DSC_5370	S	General view of HC1 with heavily burnt/ charcoal fill (83) in foreground, eastern half of HC1/in or adjacent to walling
DSC_5372	S	Fill (83)
DSC_5374	S	Exposed N layer of (83) removed from cut
DSC_5377	S	Exposed N layer of (83) removed from cut
DSC_5378	S	Exposed N layer of (83) removed from cut
DSC_5379	S	General view of eastern half, HC1
DSC_5380	S	General view of eastern half, HC1
DSC_5381	SW	Black fill(83) being revealed
DSC_5382	SW	Black fill(83) being revealed
DSC_5383	SW	Black fill(83) being revealed
DSC_5384	N	Black fill(83) being revealed
DSC_5385	N	Black fill(83) being revealed

DSC_5386	N	Black fill(83) being revealed (camera strobe)
DSC_5387	W	Black fill(83) general view
DSC_5388	W	Black fill(83) general view
DSC_5389	NW	Black fill(83) general view
DSC_5390	W	Black fill(83) general view
DSC_5391	W	Black fill(83) general view
DSC_5907	N	HC1, eastern half, excavation in progress
DSC_5908	N	HC1, eastern half, excavation in progress
DSC_5909	NW	HC1, eastern half, excavation in progress
DSC_5910	NW	HC1, eastern half, excavation in progress
DSC_5911	NE	HC1, Western half, excavation in progress
DSC_5912	N	HC1, Western half, excavation in progress
DSC_5913	N	HC1, Western half, excavation in progress
DSC_5915	NW	HC1, Western half, excavation in progress
DSC_5916	NW	HC1, Western half, excavation in progress
DSC_5917	N	Post F38, initially excavated during evaluation phase
DSC_5918	N	Post F38, initially excavated during evaluation phase
DSC_5919	N	Post F38, initially excavated during evaluation phase (strobe lighting)
DSC_5920	N	Post F38, initially excavated during evaluation phase
DSC_5921	N	Post F57, post- ex
DSC_5923	N	Post F85, post-ex
DSC_5924	N	Post F39, post-ex
DSC_5925	N	Post F39, post-ex
DSC_5926	N	Internal support post F87, post-ex
DSC_5927	N	Internal support post F89, post-ex
DSC_5928	N	Internal support post F91, post-ex
DSC_5929	N	Post F93, post-ex
DSC_5930	N	Post F93, post-ex
DSC_5931	N	Post F93, post-ex
DSC_5932	W	View of fill 83 and small find (SF28) in-situ in possible kiln, eastern half, HC1

DSC_5933	W	View of fill 83 and small find (SF28) in-situ in possible kiln, eastern half, HC1
DSC_5934-38	W	Detailed view of fill 83 and small find (SF28) in-situ in possible kiln, eastern half, HC1
DSC_5939	N	Detailed view of fill 83 and small find (SF28) in-situ in possible kiln, eastern half, HC1
DSC_5940	N	Detailed view of fill 83 and small find (SF28) in-situ in possible kiln, eastern half, HC1
DSC_5941-49	N	Detailed view of fill 83 and intact vessel base (SF29) in-situ in possible kiln, eastern half, HC1
DSC_5950	N	Detailed view of fill 83 and intact vessel base (SF29) in-situ in possible kiln, eastern half, HC1, oblique angle. Note thin stone slab supporting base underneath (vertical here)
DSC_5951	N	Detailed view of fill 83 and intact vessel base (SF29) in-situ in possible kiln, eastern half, HC1
DSC_5952-59	N	Detailed view of fill 83 and intact vessel base (SF29) in-situ in possible kiln, eastern half, HC1. Note thin stone slab supporting base underneath (vertical here)
DSC_5960	N	Detailed view of fill 83 and intact vessel base (SF29) in-situ in possible kiln, eastern half, HC1.
DSC_5961	N	Post F95, post-ex
DSC_5962	N	Post F95, post-ex
DSC_5963	N	Feature F96, pre-excavation photo
DSC_5964	N	Feature F96, pre-excavation photo
DSC_5965	W	F96/Cut [98], post-ex, HC1
DSC_5966	W	F96/Cut [98], post-ex, HC1 (poorly lit)
DSC_5967	W	F96/Cut [98], post-ex, HC1 (test shot/exposure)
DSC_5968	W	F96/Cut [98], post-ex, HC1
DSC_5969	W	SF28 – decorated pottery sherds in base of possible kiln, probable 'Grooved Ware'
DSC_5970	W	SF28 – decorated pottery sherds in base of possible kiln, probable 'Grooved Ware'
DSC_5972	W	Test shot - SF28 – decorated pottery sherds in base of possible kiln, probable 'Grooved Ware' (lens/strobe shadow in foreground)

DSC_5973	W	Test shot - SF28 – decorated pottery sherds in base of possible kiln, probable 'Grooved Ware' (lens/strobe shadow in foreground)
DSC_5974	W	Test shot - SF28 – decorated pottery sherds in base of possible kiln, probable 'Grooved Ware' (lens/strobe shadow in foreground)
DSC_5975	W	Test shot - SF28 – decorated pottery sherds in base of possible kiln, probable 'Grooved Ware' (lens/strobe shadow in foreground)
DSC_5977	N	Post F99, post-ex
DSC_5978	N	Post F99, post-ex
DSC_5979	N	Post F101, post-ex
DSC_5980	N	Post F101, post-ex (harsh lighting/strobe to reveal base of cut)
DSC_5981	N	Post F101, post-ex
DSC_5982	N	Post F103, post-ex
DSC_5983	N	Post F103, post-ex
DSC_5984	N	Post F103, post-ex
DSC_5985	N	Post F105, post-ex
DSC_5986	N	Post F105, post-ex
DSC_5987	N	Post F107, post-ex
DSC_5988	N	Post F107, post-ex
DSC_5989	N	Post F107, post-ex
DSC_5990	N	Post F107, post-ex, general wide angle view
DSC_5991	N	Post F107, post-ex
DSC_5992	NE	General working shot
DSC_5993	NE	General working shot
DSC_5994	NE	General working shot
DSC_5995	NE	General working shot
DSC_5996	NE	General working shot
DSC_5997	N	F109, post-ex
DSC_5998	N	F109, post-ex
DSC_5999	N	F109, post-ex
DSC_6000	N	F109, post-ex

DSC_6001	N	F109, post-ex
DSC_6002	N	F111, post-ex
DSC_6003	N	F111, post-ex, general view
DSC_6004-12	N	HC1, general progress view
DSC_6013	NW	HC1, general progress view
DSC_6014	W	HC1, general progress view
DSC_6015	SW	HC1, general progress view
DSC_6016	SW	HC1, general progress view
DSC_6017	SW	HC1, general progress view
DSC_6018	S	HC1, general progress view
DSC_6019	S	HC1, general progress view
DSC_6020	S	HC1, general progress view
DSC_6021	SW	General site photo
DSC_6022	SE	General site photo
DSC_6023	E	General site photo from centre of HC2
DSC_6024	N	HC1, general progress view
DSC_6025	E	General site photo
DSC_6026	SE	General site photo
DSC_6027	NE	General site photo
DSC_6028	NE	General site photo
DSC_6029	N	General site photo
DSC_6030	N	General site photo
DSC_6031	N	General site photo
DSC_6032-40	NE	General site photo
DSC_6041	S	Elevated camera perspective being raised above HC1, (blurry shot, camera in motion)
DSC_6042	S	Elevated camera perspective, HC1
DSC_6043	S	Elevated camera perspective, HC1
DSC_6044	S	Elevated camera perspective, HC1
DSC_6045	SW	Elevated camera perspective, HC1
DSC_6046	SW	Elevated camera perspective, HC1

DSC_6047	NW	Elevated camera perspective, HC1
DSC_6048	NW	Elevated camera perspective, HC1
DSC_6049	--	Interval shot as camera is lowered
DSC_6050	--	Interval shot as camera is lowered
DSC_6051	--	Interval shot as camera is lowered
DSC_6052	N	Elevated camera perspective, HC1
DSC_6053	N	Elevated camera perspective, HC1
DSC_6054	N	Elevated camera perspective, HC1
DSC_6055	NE	Elevated camera perspective, HC1
DSC_6056	NE	Elevated camera perspective, HC1
DSC_6057	NE	Elevated camera perspective, HC1
DSC_6058	NE	Elevated camera perspective, HC1
DSC_6059	SE	Elevated camera perspective, HC1
DSC_6060	SE	Elevated camera perspective, HC1
DSC_6061	SE	Elevated camera perspective, HC1
DSC_6062	SE	Elevated camera perspective, HC1
DSC_6063	SE	Elevated camera perspective, HC1
DSC_6064	S	Elevated camera perspective, HC1
DSC_6065	S	Elevated camera perspective, HC1
DSC_6066	S	Elevated camera perspective, HC1
DSC_6067	SE	Elevated camera perspective, HC1
DSC_6068-90	S	Elevated camera perspective, HC1
DSC_6092	N	Elevated camera perspective, HC1
DSC_6093	N	Elevated camera perspective, HC1
DSC_6094	N	Elevated camera perspective, HC1
DSC_6095	N	Elevated camera perspective, HC1
DSC_6096	N	Elevated camera perspective, HC1
DSC_6097	N	Elevated camera perspective, HC1
DSC_6098	NE	Elevated camera perspective, HC1 & HC2
DSC_6099-107	N	Elevated camera perspective, HC1

DSC_6108	N	Normal level (c.2m) camera perspective, HC1
DSC_6111	NE	Elevated camera perspective, HC1
DSC_6112	N	Elevated camera perspective, HC1 & HC2 relationship
DSC_6113	N	Elevated camera perspective, HC1 & HC2 relationship
DSC_6114	E	Elevated camera perspective, HC1
DSC_6115	E	Elevated camera perspective, HC1
DSC_6116	E	Elevated camera perspective, HC1
DSC_6117	NW	General view, HC1
DSC_6118	N	General view, HC1
DSC_6119	N	Detail view, possible kiln area, HC1, eastern half
DSC_6120	N	Internal support post F113, post ex
DSC_6121	N	Internal support post F115, post ex
DSC_6122	N	Internal support post F115, post ex
DSC_6130	N	Possible pit, F27, pre-ex view
DSC_6131	N	Feature/deposit F26, pre-ex view
DSC_6132	N	Feature/deposit F26, pre-ex view
DSC_6133	N	Feature/deposit F29, pre-ex view
DSC_6134	N	Feature/deposit F29, pre-ex view
DSC_6135	N	Feature/deposit F29, pre-ex view
DSC_6137	N	F117, post ex-view
DSC_6138	N	F118, post-ex view
DSC_6139	N	F118, post-ex view
DSC_6140	N	F122, post-ex view
DSC_6141	N	F122, post-ex view
DSC_6142	N	F124, post-ex view
DSC_6143	N	F124, post-ex view
DSC_6144	N	F124, post-ex view
DSC_6145	N	F126, post-ex view
DSC_6146	N	F126, post-ex view
DSC_6147	N	F126, post-ex view
DSC_6148	N	F128, post-ex view

DSC_6149	N	F128, post-ex view
DSC_6150	N	F128, post-ex view
DSC_6151	N	F134, post-ex view
DSC_6154	N	F134, post-ex view
DSC_6155	N	Southern 'entrance' HC1, post-ex view
DSC_6156	N	Southern 'entrance' HC1, post-ex view
DSC_6157	N	Southern 'entrance' HC1, post-ex view
DSC_6158	N	Southern 'entrance' HC1, post-ex view
DSC_6159	NE	Southern 'entrance' HC1, post-ex view
DSC_6162	N	Southern 'entrance' HC1, post-ex view
DSC_6163	N	F137, HC1, post-ex view
DSC_6164-8	E	F137, HC1, post-ex view
DSC_6170	S	F137, HC1, post-ex view
DSC_6171	N	F137, HC1, post-ex view
DSC_6174	N	F137, HC1, post-ex view
DSC_6175	N	F137, HC1, post-ex view
DSC_6176	N	F137, HC1, post-ex view
DSC_6177	N	F137, HC1, post-ex view
DSC_6178	N	F137, HC1, post-ex view
DSC_6179	N	F137, HC1, post-ex view
DSC_6180	N	F137, HC1, post-ex view
DSC_6182	N	F137, HC1, post-ex view
DSC_6183-91	N	F137, HC1, post-ex view (elevated)
DSC_6192	N	F138, HC1, post-ex view
DSC_6193	N	F138, HC1, post-ex view
DSC_6194	N	F140, HC1, post-ex view
DSC_6195	N	F140, HC1, post-ex view
DSC_6196	N	F140, HC1, post-ex view
DSC_6197	N	Large pit [141] filled with FCR, post-ex view
DSC_6199	N	Large pit [141] filled with FCR, post-ex view
DSC_6200-04	N	Detail of large pit [141] filled with FCR, post-ex view

DSC_6205	N	Large pit [141] filled with FCR, post-ex view
DSC_6207-15	N	'HC3' after cleaning, pre-ex photo, SW corner of Area 1
DSC_6216	SE	General view across site, prior to camera being elevated
DSC_6218-22	N	'HC3' after cleaning, pre-ex photo, SW corner of Area 1
DSC_6698-05	N	F144, post-ex view
DSC_6706	N	F146, post-ex, general view
DSC_6707	N	F145, post-ex view
DSC_6708	N	F145, post-ex view (test shot, lighting)
DSC_6709	N	F145, post-ex view
DSC_6710	N	F145, post-ex view
DSC_6711	N	F145, post-ex view
DSC_6712	N	F149, second large FCR-filled pit, post-ex view
DSC_6713	N	F149, second large FCR-filled pit, post-ex view
DSC_6714	N	F149, second large FCR-filled pit, post-ex view
DSC_6718-20	N	F148 discrete possible post or post-pad feature, internal
DSC_6721	SW	General site view, Area 1
DSC_6722-35	N	'HC3' post excavation view (elevated)
DSC_6737	N	'HC3' post excavation view
DSC_6738-41	N	'HC3' post excavation view (elevated)
DSC_6742-46	NE	'HC3' post excavation view (elevated)
DSC_6748-51	N	F24 deposit, post-ex view, located S of 'HC3'
DSC_6752-4	N	F25, post prior to excavation
DSC_6755	N	Post F25, post-excavation view
DSC_6756	N	Post F25, post-excavation view
DSC_6757	N	F145, post-excavation view
DSC_6758	N	F145, post-excavation view
DSC_6759	N	F145, post-excavation view
DSC_6760-1	N	F145, post-excavation view (detail)
DSC_6762-6	N	Infilled paleochannel, far NE corner of Area 1



DSC_4573.jpg



DSC_4574.jpg



DSC_4575.jpg



DSC_4576.jpg



DSC_4577.jpg



DSC_4579.jpg



DSC_4582.jpg



DSC_4583.jpg



DSC_4584.jpg



DSC_4586.jpg



DSC_4587.jpg



DSC_4589.jpg



DSC_4590.jpg



DSC_4591.jpg



DSC_4592.jpg



DSC_4593.jpg



DSC_4597.jpg



DSC_4603.jpg



DSC_4604.jpg



DSC_4605.jpg



DSC_4607.jpg



DSC_4609.jpg



DSC_4610.jpg



DSC_4612.jpg



DSC_4617.jpg



DSC_4618.jpg



DSC_4620.jpg



DSC_4622.jpg



DSC_4624.jpg



DSC_4626.jpg



DSC_4629.jpg



DSC_4630.jpg



DSC_4631.jpg



DSC_4632.jpg



DSC_4638.jpg



DSC_4639.jpg



DSC_4640.jpg



DSC_4646.jpg



DSC_4647.jpg



DSC_4648.jpg



DSC_4649.jpg



DSC_4658.jpg



DSC_4659.jpg



DSC_4660.jpg



DSC_4663.jpg



DSC_4666.jpg



DSC_4667.jpg



DSC_4668.jpg



DSC_4670.jpg



DSC_4672.jpg



DSC_4673.jpg



DSC_4675.jpg



DSC_4677.jpg



DSC_4679.jpg



DSC_4681.jpg



DSC_4682.jpg



DSC_4683.jpg



DSC_4684.jpg



DSC_4685.jpg



DSC_4689.jpg



DSC_4690.jpg



DSC_4695.jpg



DSC_4700.jpg



DSC_4701.jpg



DSC_4702.jpg



DSC_4703.jpg



DSC_4704.jpg



DSC_4710.jpg



DSC_4712.jpg



DSC_4718.jpg



DSC_4719.jpg



DSC_4720.jpg



DSC_4721.jpg



DSC_4722.jpg



DSC_4723.jpg



DSC_4724.jpg



DSC_4726.jpg



DSC_4727.jpg



DSC_4728.jpg



DSC_4729.jpg



DSC_4730.jpg



DSC_4731.jpg



DSC_4732.jpg



DSC_4735.jpg



DSC_4736.jpg



DSC_4737.jpg



DSC_4738.jpg



DSC_4739.jpg



DSC_4741.jpg



DSC_4742.jpg



DSC_4743.jpg



DSC_4744.jpg



DSC_4745.jpg



DSC_4747.jpg



DSC_4748.jpg



DSC_4749.jpg



DSC_4750.jpg



DSC_4761.jpg



DSC_4762.jpg



DSC_4763.jpg



DSC_4810.jpg



DSC_4812.jpg



DSC_4816.jpg



DSC_4817.jpg



DSC_4822.jpg



DSC_4823.jpg



DSC_4824.jpg



DSC_4825.jpg



DSC_4826.jpg



DSC_4828.jpg



DSC_4829.jpg



DSC_4830.jpg



DSC_4831.jpg



DSC_4832.jpg



DSC_4833.jpg



DSC_4835.jpg



DSC_4836.jpg



DSC_4837.jpg



DSC_4838.jpg



DSC_4839.jpg



DSC_4840.jpg



DSC_4842.jpg



DSC_4843.jpg



DSC_4847.jpg



DSC_4851.jpg



DSC_4852.jpg



DSC_4853.jpg



DSC_4854.jpg



DSC_4855.jpg



DSC_4856.jpg



DSC_4859.jpg



DSC_4860.jpg



DSC_4861.jpg



DSC_4862.jpg



DSC_4863.jpg



DSC_4864.jpg



DSC_4865.jpg



DSC_4866.jpg



DSC_4867.jpg



DSC_4868.jpg



DSC_4869.jpg



DSC_4870.jpg



DSC_4871.jpg



DSC_4872.jpg



DSC_4873.jpg



DSC_4874.jpg



DSC_4876.jpg



DSC_4877.jpg



DSC_4879.jpg



DSC_4880.jpg



DSC_4882.jpg



DSC_4883.jpg



DSC_4884.jpg



DSC_4885.jpg



DSC_4887.jpg



DSC_4888.jpg



DSC_4889.jpg



DSC_4890.jpg



DSC_4892.jpg



DSC_4895.jpg



DSC_4900.jpg



DSC_4901.jpg



DSC_4903.jpg



DSC_4906.jpg



DSC_4908.jpg



DSC_4909.jpg



DSC_4916.jpg



DSC_4918.jpg



DSC_4919.jpg



DSC_4920.jpg



DSC_4921.jpg



DSC_4922.jpg



DSC_4923.jpg



DSC_4924.jpg



DSC_4925.jpg



DSC_4926.jpg



DSC_4927.jpg



DSC_4928.jpg



DSC_4929.jpg



DSC_4930.jpg



DSC_4931.jpg



DSC_4932.jpg



DSC_4933.jpg



DSC_4934.jpg



DSC_4935.jpg



DSC_4936.jpg



DSC_4937.jpg



DSC_4938.jpg



DSC_4939.jpg



DSC_4940.jpg



DSC_4948.jpg



DSC_4951.jpg



DSC_4957.jpg



DSC_4958.jpg



DSC_4960.jpg



DSC_4961.jpg



DSC_4962.jpg



DSC_4963.jpg



DSC_4965.jpg



DSC_4966.jpg



DSC_4967.jpg



DSC_4969.jpg



DSC_4972.jpg



DSC_4973.jpg



DSC_4976.jpg



DSC_4977.jpg



DSC_4981.jpg



DSC_4982.jpg



DSC_4984.jpg



DSC_4985.jpg



DSC_4986.jpg



DSC_4987.jpg



DSC_4988.jpg



DSC_4989.jpg



DSC_5000.jpg



DSC_5001.jpg



DSC_5002.jpg



DSC_5007.jpg



DSC_5008.jpg



DSC_5009.jpg



DSC_5010.jpg



DSC_5012.jpg



DSC_5247.jpg



DSC_5248.jpg



DSC_5249.jpg



DSC_5250.jpg



DSC_5251.jpg



DSC_5252.jpg



DSC_5254.jpg



DSC_5255.jpg



DSC_5256.jpg



DSC_5257.jpg



DSC_5258.jpg



DSC_5259.jpg



DSC_5260.jpg



DSC_5261.jpg



DSC_5262.jpg



DSC_5263.jpg



DSC_5264.jpg



DSC_5265.jpg



DSC_5266.jpg



DSC_5267.jpg



DSC_5268.jpg



DSC_5269.jpg



DSC_5270.jpg



DSC_5271.jpg



DSC_5273.jpg



DSC_5274.jpg



DSC_5275.jpg



DSC_5276.jpg



DSC_5278.jpg



DSC_5279.jpg



DSC_5280.jpg



DSC_5281.jpg



DSC_5282.jpg



DSC_5283.jpg



DSC_5284.jpg



DSC_5285.jpg



DSC_5286.jpg



DSC_5287.jpg



DSC_5288.jpg



DSC_5289.jpg



DSC_5290.jpg



DSC_5292.jpg



DSC_5293.jpg



DSC_5294.jpg



DSC_5295.jpg



DSC_5296.jpg



DSC_5297.jpg



DSC_5298.jpg



DSC_5299.jpg



DSC_5300.jpg



DSC_5301.jpg



DSC_5302.jpg



DSC_5303.jpg



DSC_5304.jpg



DSC_5305.jpg



DSC_5306.jpg



DSC_5307.jpg



DSC_5308.jpg



DSC_5309.jpg



DSC_5310.jpg



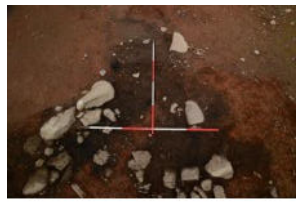
DSC_5311.jpg



DSC_5312.jpg



DSC_5313.jpg



DSC_5315.jpg



DSC_5317.jpg



DSC_5319.jpg



DSC_5320.jpg



DSC_5321.jpg



DSC_5322.jpg



DSC_5323.jpg



DSC_5324.jpg



DSC_5326.jpg



DSC_5329.jpg



DSC_5330.jpg



DSC_5331.jpg



DSC_5332.jpg



DSC_5333.jpg



DSC_5334.jpg



DSC_5335.jpg



DSC_5336.jpg



DSC_5337.jpg



DSC_5338.jpg



DSC_5339.jpg



DSC_5341.jpg



DSC_5342.jpg



DSC_5343.jpg



DSC_5344.jpg



DSC_5345.jpg



DSC_5346.jpg



DSC_5347.jpg



DSC_5348.jpg



DSC_5349.jpg



DSC_5350.jpg



DSC_5351.jpg



DSC_5352.jpg



DSC_5354.jpg



DSC_5356.jpg



DSC_5357.jpg



DSC_5358.jpg



DSC_5359.jpg



DSC_5363.jpg



DSC_5367.jpg



DSC_5368.jpg



DSC_5369.jpg



DSC_5370.jpg



DSC_5372.jpg



DSC_5374.jpg



DSC_5377.jpg



DSC_5378.jpg



DSC_5379.jpg



DSC_5380.jpg



DSC_5381.jpg



DSC_5382.jpg



DSC_5383.jpg



DSC_5384.jpg



DSC_5385.jpg



DSC_5386.jpg



DSC_5387.jpg



DSC_5388.jpg



DSC_5389.jpg



DSC_5390.jpg



DSC_5391.jpg



DSC_5907.jpg



DSC_5908.jpg



DSC_5909.jpg



DSC_5910.jpg



DSC_5911.jpg



DSC_5912.jpg



DSC_5913.jpg



DSC_5915.jpg



DSC_5916.jpg



DSC_5917.jpg



DSC_5918.jpg



DSC_5919.jpg



DSC_5920.jpg



DSC_5921.jpg



DSC_5923.jpg



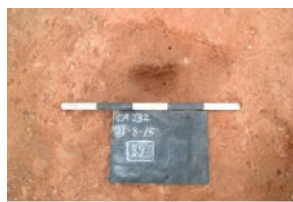
DSC_5924.jpg



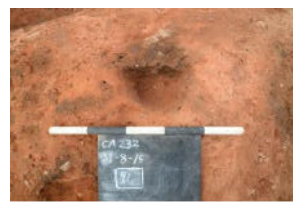
DSC_5925.jpg



DSC_5926.jpg



DSC_5927.jpg



DSC_5928.jpg



DSC_5929.jpg



DSC_5930.jpg



DSC_5931.jpg



DSC_5932.jpg



DSC_5933.jpg



DSC_5934.jpg



DSC_5935.jpg



DSC_5936.jpg



DSC_5937.jpg



DSC_5938.jpg



DSC_5939.jpg



DSC_5940.jpg



DSC_5941.jpg



DSC_5942.jpg



DSC_5943.jpg



DSC_5944.jpg



DSC_5945.jpg



DSC_5946.jpg



DSC_5947.jpg



DSC_5948.jpg



DSC_5949.jpg



DSC_5950.jpg



DSC_5951.jpg



DSC_5952.jpg



DSC_5953.jpg



DSC_5954.jpg



DSC_5955.jpg



DSC_5956.jpg



DSC_5957.jpg



DSC_5958.jpg



DSC_5959.jpg



DSC_5960.jpg



DSC_5961.jpg



DSC_5962.jpg



DSC_5963.jpg



DSC_5964.jpg



DSC_5965.jpg



DSC_5966.jpg



DSC_5967.jpg



DSC_5968.jpg



DSC_5969.jpg



DSC_5970.jpg



DSC_5972.jpg



DSC_5973.jpg



DSC_5974.jpg



DSC_5975.jpg



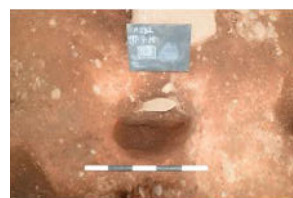
DSC_5977.jpg



DSC_5978.jpg



DSC_5979.jpg



DSC_5980.jpg



DSC_5981.jpg



DSC_5982.jpg



DSC_5983.jpg



DSC_5984.jpg



DSC_5985.jpg



DSC_5986.jpg



DSC_5987.jpg



DSC_5988.jpg



DSC_5989.jpg



DSC_5990.jpg



DSC_5991.jpg



DSC_5992.jpg



DSC_5993.jpg



DSC_5994.jpg



DSC_5995.jpg



DSC_5996.jpg



DSC_5997.jpg



DSC_5998.jpg



DSC_5999.jpg



DSC_6000.jpg



DSC_6001.jpg



DSC_6002.jpg



DSC_6003.jpg



DSC_6004.jpg



DSC_6005.jpg



DSC_6006.jpg



DSC_6007.jpg



DSC_6008.jpg



DSC_6009.jpg



DSC_6010.jpg



DSC_6011.jpg



DSC_6012.jpg



DSC_6013.jpg



DSC_6014.jpg



DSC_6015.jpg



DSC_6016.jpg



DSC_6017.jpg



DSC_6018.jpg



DSC_6019.jpg



DSC_6020.jpg



DSC_6021.jpg



DSC_6022.jpg



DSC_6023.jpg



DSC_6024.jpg



DSC_6025.jpg



DSC_6026.jpg



DSC_6027.jpg



DSC_6028.jpg



DSC_6029.jpg



DSC_6030.jpg



DSC_6031.jpg



DSC_6032.jpg



DSC_6033.jpg



DSC_6034.jpg



DSC_6035.jpg



DSC_6036.jpg



DSC_6037.jpg



DSC_6038.jpg



DSC_6039.jpg



DSC_6040.jpg



DSC_6041.jpg



DSC_6042.jpg



DSC_6043.jpg



DSC_6044.jpg



DSC_6045.jpg



DSC_6046.jpg



DSC_6047.jpg



DSC_6048.jpg



DSC_6049.jpg



DSC_6050.jpg



DSC_6051.jpg



DSC_6052.jpg



DSC_6053.jpg



DSC_6054.jpg



DSC_6055.jpg



DSC_6056.jpg



DSC_6057.jpg



DSC_6058.jpg



DSC_6059.jpg



DSC_6060.jpg



DSC_6061.jpg



DSC_6062.jpg



DSC_6063.jpg



DSC_6064.jpg



DSC_6065.jpg



DSC_6066.jpg



DSC_6067.jpg



DSC_6068.jpg



DSC_6069.jpg



DSC_6070.jpg



DSC_6071.jpg



DSC_6072.jpg



DSC_6073.jpg



DSC_6074.jpg



DSC_6076.jpg



DSC_6077.jpg



DSC_6078.jpg



DSC_6079.jpg



DSC_6080.jpg



DSC_6081.jpg



DSC_6082.jpg



DSC_6083.jpg



DSC_6084.jpg



DSC_6085.jpg



DSC_6086.jpg



DSC_6087.jpg



DSC_6088.jpg



DSC_6089.jpg



DSC_6090.jpg



DSC_6092.jpg



DSC_6093.jpg



DSC_6094.jpg



DSC_6095.jpg



DSC_6096.jpg



DSC_6097.jpg



DSC_6098.jpg



DSC_6099.jpg



DSC_6100.jpg



DSC_6102.jpg



DSC_6103.jpg



DSC_6104.jpg



DSC_6105.jpg



DSC_6106.jpg



DSC_6107.jpg



DSC_6108.jpg



DSC_6111.jpg



DSC_6112.jpg



DSC_6113.jpg



DSC_6114.jpg



DSC_6115.jpg



DSC_6116.jpg



DSC_6117.jpg



DSC_6118.jpg



DSC_6119.jpg



DSC_6120.jpg



DSC_6121.jpg



DSC_6122.jpg



DSC_6130.jpg



DSC_6131.jpg



DSC_6132.jpg



DSC_6133.jpg



DSC_6134.jpg



DSC_6135.jpg



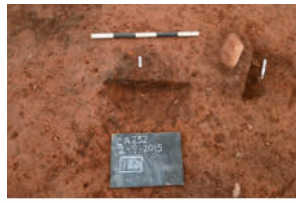
DSC_6137.jpg



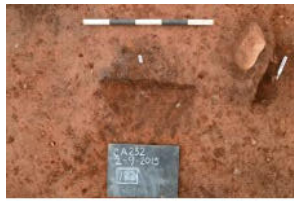
DSC_6138.jpg



DSC_6139.jpg



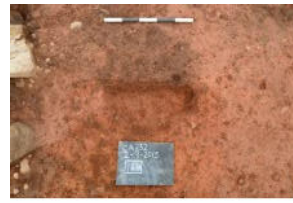
DSC_6140.jpg



DSC_6141.jpg



DSC_6142.jpg



DSC_6143.jpg



DSC_6144.jpg



DSC_6145.jpg



DSC_6146.jpg



DSC_6147.jpg



DSC_6148.jpg



DSC_6149.jpg



DSC_6150.jpg



DSC_6151.jpg



DSC_6154.jpg



DSC_6155.jpg



DSC_6156.jpg



DSC_6157.jpg



DSC_6158.jpg



DSC_6159.jpg



DSC_6162.jpg



DSC_6163.jpg



DSC_6164.jpg



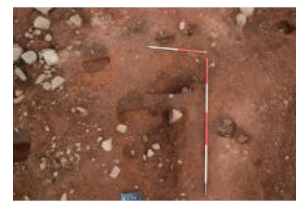
DSC_6165.jpg



DSC_6166.jpg



DSC_6168.jpg



DSC_6170.jpg



DSC_6171.jpg



DSC_6174.jpg



DSC_6175.jpg



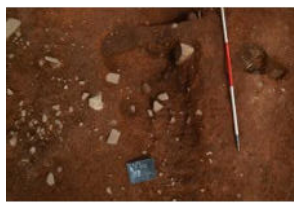
DSC_6176.jpg



DSC_6177.jpg



DSC_6178.jpg



DSC_6179.jpg



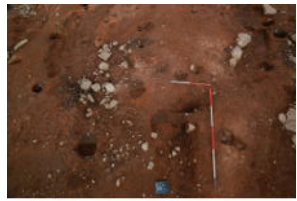
DSC_6180.jpg



DSC_6182.jpg



DSC_6183.jpg



DSC_6184.jpg



DSC_6185.jpg



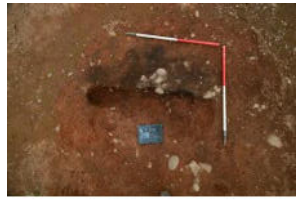
DSC_6186.jpg



DSC_6187.jpg



DSC_6188.jpg



DSC_6189.jpg



DSC_6191.jpg



DSC_6192.jpg



DSC_6193.jpg



DSC_6194.jpg



DSC_6195.jpg



DSC_6196.jpg



DSC_6197.jpg



DSC_6199.jpg



DSC_6200.jpg



DSC_6201.jpg



DSC_6202.jpg



DSC_6203.jpg



DSC_6204.jpg



DSC_6205.jpg



DSC_6207.jpg



DSC_6208.jpg



DSC_6209.jpg



DSC_6210.jpg



DSC_6211.jpg



DSC_6213.jpg



DSC_6214.jpg



DSC_6215.jpg



DSC_6216.jpg



DSC_6218.jpg



DSC_6219.jpg



DSC_6220.jpg



DSC_6221.jpg



DSC_6222.jpg



DSC_6698.jpg



DSC_6700.jpg



DSC_6702.jpg



DSC_6704.jpg



DSC_6705.jpg



DSC_6706.jpg



DSC_6707.jpg



DSC_6708.jpg



DSC_6709.jpg



DSC_6710.jpg



DSC_6711.jpg



DSC_6712.jpg



DSC_6713.jpg



DSC_6714.jpg



DSC_6718.jpg



DSC_6719.jpg



DSC_6720.jpg



DSC_6721.jpg



DSC_6722.jpg



DSC_6723.jpg



DSC_6724.jpg



DSC_6725.jpg



DSC_6726.jpg



DSC_6727.jpg



DSC_6728.jpg



DSC_6729.jpg



DSC_6730.jpg



DSC_6731.jpg



DSC_6732.jpg



DSC_6733.jpg



DSC_6734.jpg



DSC_6735.jpg



DSC_6737.jpg



DSC_6738.jpg



DSC_6739.jpg



DSC_6740.jpg



DSC_6741.jpg



DSC_6742.jpg



DSC_6743.jpg



DSC_6744.jpg



DSC_6745.jpg



DSC_6746.jpg



DSC_6748.jpg



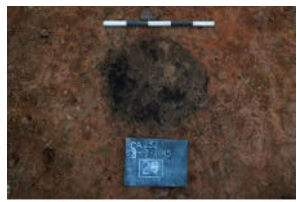
DSC_6749.jpg



DSC_6750.jpg



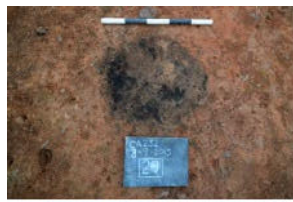
DSC_6751.jpg



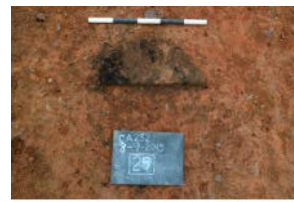
DSC_6752.jpg



DSC_6753.jpg



DSC_6754.jpg



DSC_6755.jpg



DSC_6756.jpg



DSC_6757.jpg



DSC_6758.jpg



DSC_6759.jpg



DSC_6760.jpg



DSC_6761.jpg



DSC_6762.jpg



DSC_6763.jpg



DSC_6764.jpg



DSC_6765.jpg



DSC_6766.jpg



DSC_0001.JPG



DSC_0002.JPG



DSC_0003.JPG



DSC_0004.JPG



DSC_0005.JPG



DSC_0006.JPG



DSC_0007.JPG



DSC_0008.JPG



DSC_0009.JPG



DSC_0010.JPG



DSC_0156.JPG



DSC_0157.JPG



DSC_0158.JPG



DSC_0159.JPG



DSC_0160.JPG



DSC_0161.JPG



DSC_0162.JPG



DSC_0163.JPG



DSC_0164.JPG



DSC_0165.JPG



DSC_0166.JPG



DSC_0167.JPG



DSC_0168.JPG



DSC_0169.JPG



DSC_0170.JPG



DSC_0171.JPG



DSC_0172.JPG



DSC_0173.JPG



DSC_0241.JPG



DSC_0242.JPG



DSC_0243.JPG



DSC_0244.JPG



DSC_0245.JPG



DSC_0246.JPG



DSC_0247.JPG



DSC_0248.JPG



DSC_0249.JPG



DSC_0250.JPG



DSC_0251.JPG



DSC_0252.JPG



DSC_0253.JPG



DSC_0254.JPG



DSC_0255.JPG



DSC_0256.JPG



DSC_4739.jpg



DSC_4743.jpg



DSC_4744.jpg



DSC_4840_filtered.jpg



DSC_5006_filtered.jpg



P1020021.JPG



P1020022.JPG



P1020023.JPG