

**Report on an Archaeological Evaluation for Land at
Blackdog, Aberdeenshire, AB23 8BT
Site Code CA266-2015**



**Dr Robert Lenfert
Cameron Archaeology
13 February 2016**

CONTENTS

1	INTRODUCTION.....	3
2	ARCHAEOLOGICAL BACKGROUND.....	4
3	THE EVALUATION	7
4	ARCHAEOLOGY: LITHICS	12
5	CONCLUSIONS AND RECOMMENDATIONS.....	12
6	ACKNOWLEDGEMENTS	13
7	REFERENCES	13
	DATA STRUCTURE REPORT	14
	APPENDIX 1 TRENCH DESCRIPTIONS.....	14
	APPENDIX 2 SMALL FINDS LIST	15
	APPENDIX 3 PHOTOGRAPHS	19

ILLUSTRATIONS

Cover: evaluation trench

Illus 1	Location plan.....	3
Illus 2	Detailed location plan.....	7
Illus 3	Location of the 66 evaluation trenches from GPS data.....	8
Illus 4	Plan of proposed development site	9
Illus 5	Trenches 1-38 in The Pines, South Field and Fyfe Hill.....	10
Illus 6	Trenches 39-66 in the Mid- and North Fields	11
Illus 7	Detail of flint blade (SF23) recovered from Trench 14.	12

SUMMARY

An archaeological evaluation was undertaken between 30th November 2015 and 29th January 2016, at land north of Blackdog, Aberdeenshire. Based upon the Written Scheme of Investigation (Cameron 2015), it was agreed the site was subject to 7%-10% stripping of topsoil to investigate the potential for archaeological remains or features. This work took the form of machine excavator trenching with a toothless bucket in conjunction with hand-excavation for closer inspection of potential archaeological deposits. While 69 prehistoric flints, including at least one flint tool, were recovered within the heavily ploughed topsoil zone, no archaeological features were identified within the underlying subsoil.

After discussion with Aberdeenshire Council archaeologist Bruce Mann no further fieldwork is required but a Post-Excavation Research Design (PERD) has been prepared detailing the costs for reporting on and illustration of the flints.

1 INTRODUCTION

The site (Illus 1) is located on the E side of the A90 at Blackdog from Hareburn Terrace at the S and Blackdog Rifle Range to the E. It is centred on NGR NJ 95938 14465, at 25-30m OD (Illus 1) and in the parish of Belhelvie. The work was commissioned by Allan Rae for Kirkwood Homes and Ashfield Land. The site is being prepared for a planning application to Aberdeenshire Council which required a 7-10% archaeological evaluation. All the archaeological work will be carried out in the context of Scottish Planning Policy (SPP) Planning Advice Note (PAN 2/2011) and Scottish Historic Environment Policy (SHEP), which state that archaeological remains should be regarded as part of the environment to be protected and managed.



Illus 1 Location plan (Contains Ordnance Survey data © Crown copyright and database right 2016)

2 ARCHAEOLOGICAL BACKGROUND

2.1 There are two Scheduled Ancient Monuments within 1km of the proposed development. The Temple Stones is a stone circle NE of Potterton House. All that remains of this recumbent stone circle is the massive recumbent boulder and its flanking stones, both of which have fallen. The recumbent, which lay on the SW of the circle, is irregularly-shaped and measures 2.9m in length from ESE to WNW by about 1.1m in thickness and 1.7m in height. The E flanker has fallen to the NE and measures 2.6m in length by 1.7m in breadth and at least 0.7m in thickness. The W flanker has fallen to the WNW and measures 2.9m in length by 1.4m in breadth and at least 0.7m in thickness. A heap of field-cleared stones has been placed behind the recumbent and the remainder of the area of the circle has been cultivated. A cairn 325m N of Home Farm Cottage is also scheduled. Although the E side of the cairn has been truncated by a cutting on the W side of the road, and the S side has been trimmed by ploughing, the grass- and tree-grown mound still measures 15m from N to S by 11.2m transversely and about 2.3m in height; the top of the cairn has been slightly disturbed.

2.2 A portion of the proposed development has already been evaluated and excavated. A 7% sample evaluation was undertaken 22–30 June 2009 prior to the development of a greenfield site. A total of 34 trenches covering a basal area of 7840m² were opened. The evaluation demonstrated the detrimental effect of deep ploughing but also revealed three discrete areas containing significant archaeological features: a ring ditch, a roundhouse and some isolated pits. All of the features were dated by artefactual material or analogy to excavated prehistoric sites. (Clements and Cook 2009, 18).

2.3 There is a barrow and cairn at Bairnie Hillock (Hatton Farmhouse; NJ91NE 11). The round cairn is situated above Mildren Burn on the farm of Hatton. It stands in a prominent position in an area of broom and grass on the edge of an arable field at an altitude of about 26m OD. The ground falls away steeply to the N and the monument looks out to sea. There are large boulders in exposed S edge and possible old land surface in SW corner. It is clear from the section exposed along a chord of the SW side that the man-made part of the cairn sits on a prominent natural boss of sand which now stands up to 1.5m proud of the present ground surface (on the W side). The make-up of the mound is as follows: turf/sandy soil/large granite boulders/original turf line with charcoal flecking/natural sand boss. It is possible that the boulder layer represents an annular feature around a central space as the boulders are now missing from the section exposed on the heavily-eroded SW side. The boulders lie in up to three courses in a layer of 0/86m maximum thickness; they are around 50cm long and 20cm tall. The possible turf line is about 5cm thick and has a possible zone of disturbance immediately below it. The S edge of the perimeter of the mound was undercut in 1977, the mound was damaged in agricultural operations in September 1979, and suffered erosion from cattle rubbing in 1983.

The small cairn occupying a prominent knoll on the edge of a meltwater channel was excavated owing to its continuing erosion by stock. A two-phase monument was revealed, consisting of a low but substantial circular cairn, c 14m in diameter and 0.8m high, built on a burnt old land surface on which a small quantity of cremated bone and flint flakes had been scattered. This cairn subsequently enlarged by the insertion of a food vessel cremation and the addition of a barrow up to 1.2m high of burnt turf and sandy subsoil.

This barrow is situated on the edge of an old river terrace 90m N of Hatton farmhouse. It was excavated by Shepherd in 1984 and much of the mound that is

visible today presumably represents a post-excavation reconstruction (Shepherd 1984, 11). A number of cairns were located at Tarbathy (Hill of Strabathie; NJ91SE 1) but these have been removed by sand and gravel workings.

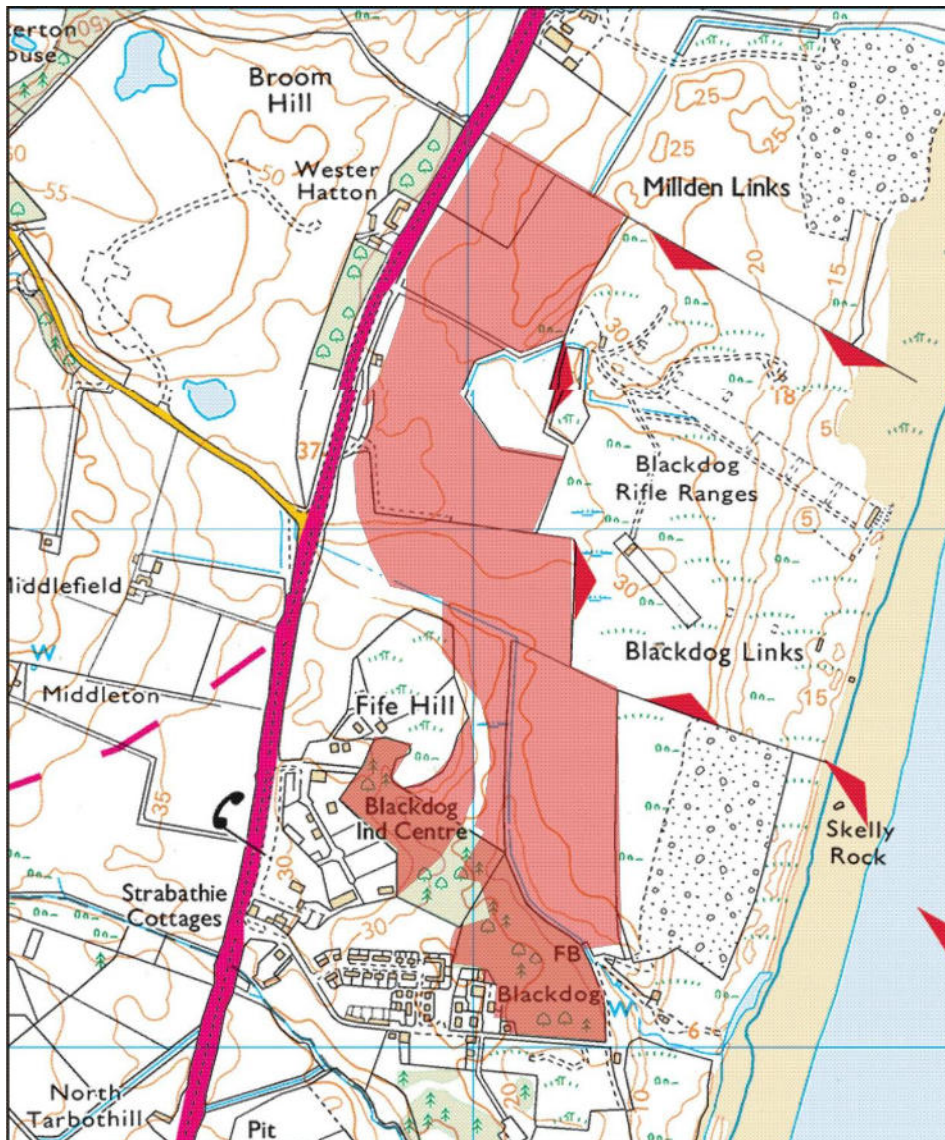
2.4 1.5km south of the proposed development, recent archaeological excavation at Berryhill (The Core, Phase 1) revealed eight post-hole bases or pits; these were poorly preserved but may represent the remains of one circular structure. The samples offer insight into the site economy. The main cultivars appear to have been emmer wheat and naked barley. Radiocarbon dating of the emmer wheat from the fill of feature 8 returned a Neolithic date. The abundance of cereal suggests that it was being stored or produced on the site. The presence of chaff and high weed content suggests cereal crop that has not been fully cleaned and the presence of weed seeds suggests they were incidentally collected during harvesting. The presence of hazel nutshell suggests wild food was also collected. The hazel shell together with Neolithic pottery, cereal grain, lithics and burnt bone in the fill of feature 8 suggests that the debris came from a domestic source. The pottery assemblage comprises 14 vessels of middle Neolithic date. The small sherds from several vessels within these features is typical of domestic refuse. They are not heavily abraded and so it is unlikely that they were exposed to the elements for a great amount of time (i.e. in middens or scattered deposits) before incorporation in the pits. The activity clearly dates to around the mid-4th millennium BC and the pottery can be classed a middle Neolithic; an unexpectedly early date from feature 7 does raise a question mark over the presence of Impressed Ware in this context (Cameron 2015).

2.5 Vertical aerial photography (OS 82/162/035) has recorded the cropmark of a probable souterrain at Wester Hatton (NJ91NE 37) on a low gravel rise 260m NW of Wester Hatton farmhouse. The souterrain measures about 12m in length and appears to be roughly Y-shaped on plan, with the foot of the Y to the E; what may be a narrow entrance passage, approaching from the SE, is situated on the S side of the souterrain immediately W of its midpoint.

2.6 An archaeological evaluation was undertaken in advance of redevelopment at Easter Hatton (NJ91NE 58). Twelve trial trenches were machine-excavated down to natural subsoil. These identified a cultivation soil over windblown sand and glacial sands and gravels. No features of archaeological significance were encountered. During a walkover of the site a surface scatter of hand-struck flints was encountered within an area of sand-blow. A number of small trial trenches were hand-excavated, revealing two cut features containing flint and charcoal. Subsequent excavation retrieved a substantial assemblage of flint but no evidence for archaeological features. The chronology is presently uncertain but the lack of microliths or any signs of a blade technology suggests that the site is not Mesolithic. A study was carried out on the 446 pieces of flaked stone found on the site at Easter Hatton. The report states that the assemblage comes from local raw material rather than travelling to Boddam where larger nodules are available. The assemblage shows that knapping was carried out on the site and the knappers would discard cores before they were exhausted and would return to them at a later point. The collection would suggest that activity at Easter Hatton specialised and required a greater number of flakes with a few scrapers that were made as and when they needed them (Holden 1998, 6).

2.7 Wester Hatton quarry (NJ91NE 64) An archaeological evaluation was carried out in advance of a proposed land fill. Twenty-eight trenches, each 50 x 2m, were excavated. Four cut features of unknown date were recorded. The remains of cultivation furrows provided evidence of agricultural activity prior to the 19th century, while a number of field drains gave evidence of continued agricultural use into the 19th and 20th centuries. One piece of worked flint was retrieved from the topsoil (Halliday 2000, 8).

- 2.8 Middlefield cropmark (possible square barrow; NJ91NE 62). Air photography (AAS/89/11/S33/16-20) has recorded cropmarks (including those of a possible square barrow) on a wide shelf on an E-facing slope in arable ground at an altitude of about 55m OD.
- 2.9 There is rig and furrow surviving in several areas including Blackdog Rifle Range (NJ91NE 16) visible on aerial photographs (Grieg 1994, 26), Potterton House (NJ91NW 30), Potterton (NJ91NW 25) and Torrangin (NJ91NE 24).
- 2.10 Caste Hill (NJ91SW 19) is a possible motte (Yeoman 1988, 131) which has been very heavily cultivated, the hill is under crop and no earthworks can now be observed.
- 2.11 An ice house at Hatton (Millden Links NJ91NE 31) is depicted on the First Edition of the OS 6-inch map (Aberdeenshire 1869, sheet lxvi) but was destroyed by sand and gravel quarrying. An ice house is also located at Blackdog (NJ91SE 14).
- 2.12 The area has been extensively quarried. Quarries include Wester Hatton (NJ91NE 35), Blackdog Links (NJ91SE 7), Hill of Strabathie (NJ91SE 8), Hill of Tramaud (NJ91SW 59), Mundurno (NJ91SW 60), Potterton House (NJ91NE 32) and Torrangin (NJ91NE 23).
- 2.13 19th-century farmhouses include Potterton House (NJ91NW 27), Wester Hatton (NJ91NE 34), Blackdog (NJ91SE 5, 30), Tarbothill (NJ91SE 11), Home Farm of Potterton (NJ91NW 27.1), Middlefield (NJ91SE 15, 18), Denside (NJ91NE 68) Harehill (NJ91SW 187) and Blackdog Industrial Centre (NJ91SE 10). There was a watermill at Mill of Potterton (NJ91NW 27.2).
- 2.14 There are three boundary stones at Blackdog Burn (NJ91SE 27), Hill of Strabathie (NJ91SE 32) and Blackdog Croft (NJ91SE 31) within 1km of the proposed development.
- 2.15 Strabathie Seaton Brick and Tile Works (NJ91SE 9) was located south of this proposed development. This brick- and tileworks operated from 1898 to the 1920's; it had two Hoffman (continuous) kilns and is now represented by earthworks (Douglas and Oglethorpe 1993, 52).
- 2.16 The site adjoins Blackdog Rifle Range (NJ91NE 22) at the E a 20th century rifle range not on 1st or 2nd Edition Ordnance Survey maps.
- 2.17 There are tank traps at Blackdog Burn (NJ91SE 40) and at Murcar (NJ91SE 47) There is a V-shaped arrangement of approximately six anti-tank blocks is situated in the dunes alongside Murcar Golf Course, approximately 180m west of the Mean Low Water mark.
- 2.18 Recent work on Aberdeen Peripheral Route has identified archaeological remains in the areas adjacent to this proposed development but no details of these findings are available at time of writing.
- 2.19 A watching brief (NJ91SW 193) was carried out 25 March 2008 during site investigation works at 102 West Port, Blackdog prior to redevelopment of a brownfield site which formerly housed the 19th century Strathbathie Brick and Tile Works. No significant archaeological features or artefacts were encountered (Cook 2008, 17).
- 2.20 The proposed development area is field and dunes in 1988 (Illus 10) and areas at the south end of the area have been planted with trees since that date (Illus 2).



Illus 2 Location plan (Contains Ordnance Survey data © Crown copyright and database right 2015) showing tree covered area at the S of the proposed development

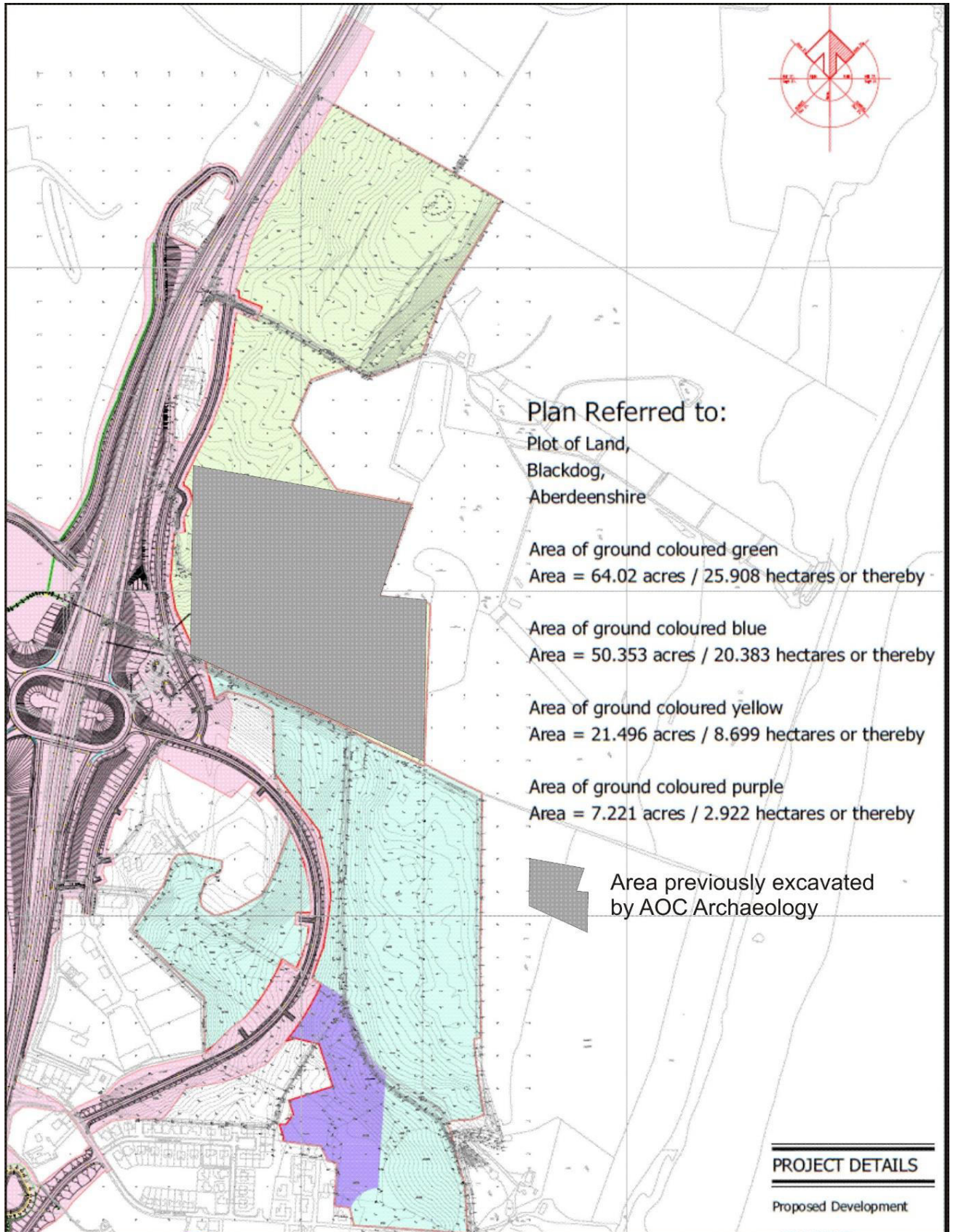
3 THE EVALUATION

A 7%-10% evaluation of the proposed development was undertaken between 30th November 2015 and 29th January 2016, with a total of 66 trenches (Illus 2a, 2b) varying in length from 37m to 515m for a total of 33,334m² trenched. The trenching was performed by a 14-ton excavator using a 2m wide bucket, with possible archaeological features investigated by hand using a trowel and shovel. AOC Archaeology had previously trenched some 11Ha of the area (*shaded area* Illus 3) during an earlier project which identified three areas of prehistoric archaeology (Clements & Cook 2009). This left 46.712Ha, or 467,120m², which required a soil strip of 32,700m² to 46,712m² in the 7% to 10% range. Mild temperatures were offset by record December rains leading into an equally wet January which flooded a small number of trenches within minutes. Despite this, the majority of the trenches reached subsoils with a sandy or gritty gravel component which facilitated draining. As certain areas were inaccessible due to tree cover, most notably the Pines and Easterly areas within Fyfe Hill, additional trenches were placed

in areas assessed as having higher archaeological potential, primarily the south field where the vast majority of flints were recovered.



Illus 3 Location of the 66 evaluation trenches from GPS data and areas of archaeology within the project area. For the purposes of clarity within this report, trenching was divided into five parcels from left to right, or south to north: Pines, South Field, Fyfe Hill, Mid-Field and North Field. The South Field contains extra trenches to compensate for the heavily wooded area in the Pines which was largely inaccessible (image c. The Geoinformation Group, Digital Globe, Google, 2016).



Illus 4 Plan of proposed development site (copyright William Lippe Architects); the areas to be evaluated are in green, blue and purple and the areas already excavated is in grey.



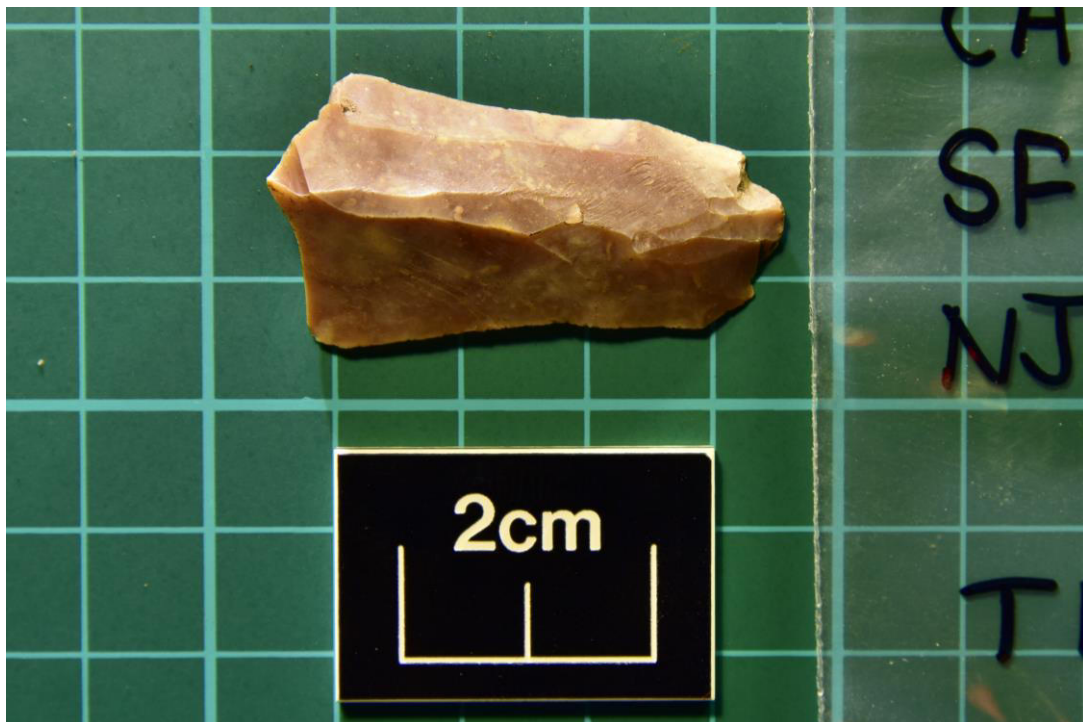
Illus 5 Trenches 1-38 in The Pines, South Field and Fyfe Hill (image c. The Geoinformation Group, Digital Globe, Google, 2016).



Illus 6 Trenches 39-66 in the Mid- and North Fields (image c. The Geoinformation Group, Digital Globe, Google, 2016).

4 ARCHAEOLOGY: LITHICS

While no intact archaeological features were identified throughout the evaluation area, a total of 69 lithics were recovered, ranging from sub-10mm debitage and flakes to possible scrapers, with one clearly defined blade (SF23; Illus 7) a delicate 'bladelet' (SF28) and another fragment of blade (SF60). The vast majority of lithics came from trenches 8-17 in the south field, with a particular concentration in T11-17 near the southern end on a slight rise, just before a gentle break in the slope down to the former burn. As testimony to the detrimental effects of modern ploughing, with the exception of three flints, all lithics were located in the top soil and identified either from inspection of spoil heaps prior to backfilling, or by field-walking backfilled trenches after rain cleaned the surfaces. Modern ceramic sherds consisting of largely undecorated white-ware were also present in virtually every trench, albeit in dispersed distributions, in addition to two sections of clay pipe stem. In several instances, flints were found in topsoil deposits within close proximity to flakes and debitage, also highlighting the heavily disturbed nature of the topsoil. Extensive traces of modern ploughing were evident on the sub-soil/topsoil interface throughout virtually all trenches, as was the presence of stone or clay tile field drains. Although perhaps the paucity of features suggests archaeological activity may have been limited in this area, the effect of deep-ploughing would have likely destroyed or obscured traces of pits, foundations or other archaeological features, unless the deposition of lithics was the result of field-expedient, temporary knapping by groups on the move. No unglazed pottery or other stone implements were located.



Illus 7 Detail of flint blade (SF23) recovered from Trench 14.

5 CONCLUSIONS AND RECOMMENDATIONS

67 flints were recovered from a generally localised distribution in the south field, largely concentrating on the crest of a small rise above the Blackdog Burn, some 20-30m in length. However, with the exception of three flints from the south field, the remainder of the lithics were unstratified finds identified during fieldwalking - either plucked from the spoil heaps cast out by the excavator, or from backfilled trenches once rain had cleaned the exposed surfaces. This situation, along with the lack of archaeological features, indicates that modern ploughing has had a detrimental effect on *in-situ* preservation, while suggesting that any features within the trenches did not

extend below an average depth of 0.25 to 0.30m. This is not to say with complete certainty that no features exist outwith the trenches, but the likelihood would certainly appear greatly diminished. Although an earlier evaluation of c.11.4ha in the area separating the south from mid-fields (Clements & Cook 2009) did reveal one ring-ditch amongst several smaller features including pits and a possible arc of a hut circle, this group of features would appear to be an easterly continuation most likely related to a series of circular cropmarks now located on the other side of the modern A90 route (Wester Hatton, RCAHMS site number NJ91NE 36). This truncated distribution suggests that a significant portion in between may have been lost to roadworks. Alternatively, remaining archaeology may well survive within the verges either side. Two remote, solitary flints – one found on Fyfe Hill in Trench 31 (SF37) and (SF36) Trench 53, north field, point to the potential for other undiscovered features within the project area, yet do not themselves hold a great deal of significance.

After discussion with Aberdeenshire Council archaeologist Bruce Mann no further fieldwork is required but a Post-Excavation Research Design (PERD) has been prepared detailing the costs for reporting on and illustration of the flints.

6 ACKNOWLEDGEMENTS

Many thanks to Alison Cameron for producing and providing the WSI. Thanks also goes to Claire Herbert and Bruce Mann, Archaeologists for Aberdeenshire, Moray and Angus, and Kirkwood Homes and Ashfield Land for commissioning the archaeological work, and landowner Colin Tawse for assisting with gate access on short notice. A final thanks goes to Drew Nichols from Ellon Plant Hire who dug (and backfilled) over 33,000m² of trenches.

7 REFERENCES

Cameron A 2015 Phase 1 The Core Berryhill Farm archaeological excavation. Report submitted to Aberdeen/shire Council.

Clements and Cook, V and M. 2009 Blackdog, Aberdeenshire (Belhelvie parish), evaluation', *Discovery Excav Scot, New*, vol. 10, 2009. Cathedral Communications Limited, Wiltshire, England, 18.

Cook, M. 2008 Blackdog, Bridge of Don, Aberdeenshire (Belhelvie parish), watching brief', *Discovery Excav Scot, New*, vol. 9, 2008. Cathedral Communications Limited, Wiltshire, England, 17.

Douglas and Oglethorpe, G and M. 1993 Brick, tile and fireclay industries in Scotland. Edinburgh, 52.

Greig, M. 1994 [Sites identified while checking aerial photographs and maps held by GRC, or as the result of an aerial reconnaissance programme]', *Discovery Excav Scot*, 1994, 26.

Halliday, S. 2000 Wester Hatton Quarry, Potterton (Belhelvie parish), evaluation', *Discovery Excav Scot*, vol. 1, 2000, 8.

Holden, T. 1998 Easter Hatton, Belhelvie (Belhelvie parish), prehistoric flint scatter', *Discovery Excav Scot*, 1998, 6.

Shepherd, I A G. 1984 Bairnie Hillock (Belhelvie p): round cairn/barrow', Discovery Excav Scot, 1984, 11.

Yeoman, P A. 1988 Mottes in Northeast Scotland', Scot Archaeol Rev, vol. 5, 1988. Page(s): 131, 132, no. 36.

DATA STRUCTURE REPORT

APPENDIX 1 TRENCH DESCRIPTIONS

Trench Number	Dimensions	Notes
1	2.0m x 45m	No archaeology noted
2	2.0m x 78m	No archaeology noted
3	2.0m x 88m	No archaeology noted
4	2.0m x 140m	No archaeology noted
5	2.0m x 28m	No archaeology noted
6	2.0m x 28m	No archaeology noted
7	2.0m x 501m	No archaeology noted
8	2.0m x 508m	Flints
9	2.0m x 514m	Flints
10	2.0m x 497m	Flints
11	2.0m x 491m	Flints
12	2.0m x 485m	Flints
13	2.0m x 488m	Flints
14	2.0m x 480m	Flints
15	2.0m x 481m	Flints
16	2.0m x 477m	Flints
17	2.0m x 479m	Flints
18	2.0m x 477m	No archaeology noted
19	2.0m x 480m	No archaeology noted
20	2.0m x 481m	No archaeology noted
21	2.0m x 476m	No archaeology noted
22	2.0m x 377m	No archaeology noted
23	2.0m x 471m	No archaeology noted
24a/b	2.0m x 280m (140m each)	No archaeology noted
25	2.0m x 45m	No archaeology noted
26	2.0m x 356m	No archaeology noted
27	2.0m x 360m	No archaeology noted
28	2.0m x 62m	No archaeology noted
29	2.0m x 52m	No archaeology noted
30	2.0m x 130m	No archaeology noted
31	2.0m x 73m	Solitary flint at north end, Fyfe Hill
32	2.0m x 56m	No archaeology noted
33	2.0m x 48m	No archaeology noted
34	2.0m x 75m	No archaeology noted
35	2.0m x 120m	No archaeology noted
36	2.0m x 73m	No archaeology noted
37	2.0m x 62m	No archaeology noted
38	2.0m x 39m	No archaeology noted
39	2.0m x 73m	No archaeology noted
40	2.0m x 46m	No archaeology noted
41	2.0m x 37m	No archaeology noted
42	2.0m x 200m	No archaeology noted

43	2.0m x 210m	No archaeology noted
44	2.0m x 214m	No archaeology noted
45	2.0m x 205m	No archaeology noted
46	2.0m x 210m	No archaeology noted
47	2.0m x 208m	No archaeology noted
48	2.0m x 211m	No archaeology noted
49	2.0m x 209m	No archaeology noted
50	2.0m x 210m	No archaeology noted
51	2.0m x 300m	No archaeology noted
52	2.0m x 300m	No archaeology noted
53	2.0m x 300m	One flint recovered near northern end of trench
54	2.0m x 300m	No archaeology noted
55	2.0m x 300m	No archaeology noted
56	2.0m x 300m	No archaeology noted
57	2.0m x 300m	No archaeology noted
58	2.0m x 300m	No archaeology noted
59	2.0m x 300m	No archaeology noted
60	2.0m x 300m	No archaeology noted
61	2.0m x 300m	No archaeology noted
62	2.0m x 300m	No archaeology noted
63	2.0m x 300m	No archaeology noted
64	2.0m x 220m	No archaeology noted
65	2.0m x 43m	No archaeology noted
66	2.0m x 70m	No archaeology noted

APPENDIX 2 SMALL FINDS LIST

Small Finds Number (SF)	Type	Notes
01	Lithic, debitage, <i>in situ</i>	Trench 10 NJ 96221 14328 57°13'10.88"N 02° 3'51.16"W
02	Lithic, debitage, <i>in situ</i>	Trench 10 NJ 96224 14286 57°13'9.54"N 02° 3'50.97"W
03	Lithic, debitage	Trench 10 NJ 96226 14279 57°13'9.30"N 02° 3'50.85"W
04	Lithic, debitage, <i>in situ</i>	Trench 10 NJ 96223 14297 57°13'9.87"N 2° 3'51.01"W
05	Lithic, debitage	Trench 11 NJ 96210 14344 57°13'11.39"N 02°03'51.77"W
06	Lithic, debitage	Trench 11 NJ 96212 14299 57°13'9.93"N

		02° 3'51.70"W
07	Lithic, debitage	Trench 11 NJ 96212 14299 57°13'9.93"N 02° 3'51.70"W
08	Lithic, debitage	Trench 11 NJ 96212 14299 57°13'9.93"N 02° 3'51.70"W
09	Lithic, debitage	Trench 11 NJ 96212 14299 57°13'9.93"N 02° 3'51.70"W
10	Lithic, debitage	Trench 11 NJ 96212 14299 57°13'9.93"N 02° 3'51.70"W
11	Lithic, debitage	Trench 11 NJ 96212 14299 57°13'9.93"N 02° 3'51.70"W
12	Lithic, debitage	Trench 11 NJ 96212 14299 57°13'9.93"N 02° 3'51.70"W
13	Lithic, debitage	Trench 11 NJ 96212 14299 57°13'9.93"N 02° 3'51.70"W
14	Lithic, debitage	Trench 11 NJ 96212 14299 57°13'9.93"N 02° 3'51.70"W
15	Lithic, debitage	Trench 11 NJ 96212 14299 57°13'9.93"N 02° 3'51.70"W
16	Lithic, debitage	Trench 11 NJ 96212 14299 57°13'9.93"N 02° 3'51.70"W
17	Lithic, debitage	Trench 11 NJ 96212 14299 57°13'9.93"N 02° 3'51.70"W
18	Lithic, debitage	Trench 11 NJ 96209 14314 57°13'10.42"N 02°03'51.89"W
19	Lithic, debitage	Trench 11 NJ 96209 14314 57°13'10.42"N 02°03'51.89"W
20	Lithic, debitage	Trench 12 NJ 96208 14274 57°13'09.12"N 02°03'51.94"W

21	Lithic, debitage	Trench 12 NJ 96208 14274 57°13'09.12"N 02°03'51.94"W
22	Lithic, debitage	Trench 12 NJ 96208 14274 57°13'09.12"N 02°03'51.94"W
23	Lithic, blade	Trench 14 NJ 96187 14378 57°13'09.12"N 02°03'51.94"W
24	Lithic, debitage	Trench 14 NJ 96187 14378 57°13'09.12"N 02°03'51.94"W
25	Lithic, debitage	Trench 14 NJ 96187 14378 57°13'09.12"N 02°03'51.94"W
26	Lithic, debitage	Trench 14 NJ 96187 14378 57°13'09.12"N 02°03'51.94"W
27	Lithic, debitage	Trench 14 NJ 96187 14378 57°13'09.12"N 02°03'51.94"W
28	Lithic, bladelet?	Trench 12 NJ 96204 14683 57°13'22.35"N 02°03'52.21"W
29	Lithic, debitage	Trench 14 NJ 96188 14323 57°13'10.73"N 2° 3'53.09"W
30	Lithic, debitage	Trench 14 NJ 96188 14323 57°13'10.73"N 2° 3'53.09"W
31	Lithic, debitage	Trench 14 NJ 96188 14323 57°13'10.73"N 2° 3'53.09"W
32	Lithic, debitage	Trench 14 NJ 96188 14323 57°13'10.73"N 2° 3'53.09"W
33	Lithic, debitage	Trench 16 NJ 96174 14330 57°13'10.96"N 2° 3'53.92"W
34	Lithic, debitage	Trench 16 NJ 96174 14330 57°13'10.96"N 2° 3'53.92"W
35	Lithic, debitage	Trench 16

		NJ 96174 14330 57°13'10.96"N 2° 3'53.92"W
36	Lithic, debitage	Trench 53 (North Field) NJ 96032 15626 57°13'52.85"N 2° 4'2.48"W
37	Lithic, debitage	Trench 31 (Fyfe Hill) NJ 95932 14476 57°13'15.67"N 2° 4'8.37"W
38	Lithic, debitage	Trench 8 NJ 96254 14252 57°13'8.41"N 02° 3'49.18"W
39	Lithic, debitage	Trench 8 NJ 96254 14252 57°13'8.41"N 02° 3'49.18"W
40	Lithic, debitage	Trench 8 NJ 96257 14244 57°13'8.17"N 02° 3'49.00"W
41	Lithic, debitage	Trench 8 NJ 96257 14244 57°13'8.17"N 02° 3'49.00"W
42	Lithic, debitage	Trench 8 NJ 96257 14244 57°13'8.17"N 02° 3'49.00"W
43	Lithic, debitage	Trench 8 NJ 96257 14244 57°13'8.17"N 02° 3'49.00"W
44	Lithic, debitage	Trench 9 NJ 96235 14489
45	Lithic, debitage	Trench 10 NJ 96223 14297
46	Lithic, debitage	Trench 10 NJ 96223 14297
47	Lithic, debitage	Trench 10 NJ 96224 14308
48	Lithic, debitage	Trench 10 NJ 96224 14308
49	Lithic, debitage	Trench 10 NJ 96224 14308
50	Lithic, debitage	Trench 10 NJ 96224 14308
51	Lithic, debitage	Trench 10 NJ 96224 14308
52	Lithic, debitage	Trench 11 NJ 96209 14319
53	Lithic, debitage	Trench 11 NJ 96209 14319
54	Lithic, debitage	Trench 11 NJ 96209 14319

55	Lithic, debitage	Trench 11 NJ 96209 14319
56	Lithic, debitage	Trench 11 NJ 96209 14319
57	Lithic, debitage	Trench 11 NJ 96209 14319
58	Lithic, debitage	Trench 11 NJ 96209 14319
59	Lithic, debitage	Trench 11 NJ 96209 14319
60	Lithic, portion of blade	Trench 11 NJ 96209 14319
61	Lithic, debitage	Trench 11 NJ 96211 14381
62	Lithic, debitage	Trench 13 NJ 96195 14545
63	Lithic, debitage	Trench 13 NJ 96197 14389
64	Lithic, debitage	Trench 15 NJ 96183 14401
65	Lithic, debitage	Trench 17 NJ 96170 14396
66	Lithic, debitage	Trench 17 NJ 96161 14459
67	Lithic, debitage	Trench 13 NJ 96195 14545
68	Lithic, debitage	Trench 13 NJ 96195 14545
69	Lithic, debitage	Trench 13 NJ 96197 14358

APPENDIX 3 PHOTOGRAPHS

Photo ID	Direction Facing	Comments
DSC_7461	W	Commencing trenching in 'Pines'
DSC_7464	W	Trenching in 'Pines'
DSC_7466	W	Trenching in 'Pines'
DSC_7467	W	Natural geology in 'Pines'
DSC_7468	W	Trench 2 'Pines'
DSC_7470	E	Trench 2 'Pines'
DSC_7471	W	Trench 2 'Pines'
DSC_7472	W	Trench 2 'Pines'
DSC_7473	E	Trench 2 'Pines'
DSC_7475	E	Trench 2 'Pines'
DSC_7476	W	Track through the 'Pines' which was largely inaccessible for trenching.
DSC_7477	SE	Track through 'Pines' in clear area for trenching
DSC_7478	W	Recently cleared conifers in 'Pines'
DSC_7479	NW	Recently cleared conifers in 'Pines'
DSC_7489	NW	Trench 3 'Pines'
DSC_7491	SE	Trench 4 'Pines'

_DSC8739	SW	Trench 6 'Pines' showing extent of deep modern ploughing.
_DSC8740	NE	Trench 6 'Pines'
_DSC8743	SW	Trench 5 'Pines'
_DSC8744	SW	Top end of Trench 5 'Pines'
_DSC8746	N	Trench 4 'Pines'
_DSC8747	S	Trench 4 'Pines'
_DSC8748	N	Trench 7 - beginning topsoil strip in South Field
_DSC8750	SW	General view from South Field looking towards 'Pines'
_DSC8791	NE	Early morning backfilling from previous day, South Field
_DSC8799	S	Trench 7, natural soil formations
_DSC8800	N	Trench 7 completed
_DSC8803	S	Trench 7 completed with natural iron pan-type deposits visible as black area
_DSC8804	S	Trench 8 underway
_DSC8808	E	Stratigraphy in Trench 7
_DSC8810	N	Top end of Trench 8, completed
_DSC8816	S	Top end of Trench 9, completed
_DSC8821	S	Trench 11 nearing completion
_DSC8824	N	Trench 11 showing natural variation in sub-soils
_DSC8825	S	Trench 11 nearing completion
_DSC8827	S	Trench 10 completed (note - T11 was dug first)
_DSC8828	N	Trench 10 underway
_DSC8838	S	Trench 10 completed
_DSC8929	N	Possible feature in Trench 11 – revealed to be field drain
_DSC8930	N	Detail of field drain in Trench 11
_DSC8962	S	Trench 13 nearing completion
_DSC8970	S	General view of access to site after initial rains
_DSC8997	NE	Suspected feature revealed as field drain after opening surrounding area in Trench 11
_DSC8999	NE	Suspected feature revealed as field drain after opening surrounding area in Trench 11
_DSC9006	N	Trench 13 completed
_DSC9189	N	South end of Trenches 14 and 15
_DSC9189	NE	Trench 15 underway
_DSC9208	S	Working shot - backfilling
_DSC9209	S	Trench 16 underway
_DSC9210	S	Trench 16, looking across at completed trenches
_DSC9211	N	Trench 17 underway
_DSC9213	S	Trench 17 underway
_DSC9228	N	Trench 17 completed
_DSC9233	NE	Trench 18 underway
_DSC9534	SW	Trench 19 underway
_DSC9235	SW	Modern plough marks near field drain, T19
_DSC9538	NW	Trench 20 underway
_DSC9539	S	Trench 21 underway
_DSC9540	NE	Trench 22 underway
_DSC9541	S	Trench 22 completed
_DSC9542	N	Trench 22 completed
_DSC9543	S	Trench 23 nearing completion
_DSC9544	N	Trench 23 nearing completion

_DSC9545	SE	General shot of south field
_DSC9546	E	General shot of south field
_DSC9547	N	General shot, nearing completion in South Field
_DSC1166	N	North Field - Trenches 62 and 63, nearing completion
_DSC1168	S	North Field - Trenches 62 and 63, nearing completion
_DSC1171	S	Trench 60 nearing completion
_DSC1173	N	Trench 60 completed, looking north
_DSC1180	E	Trench 59 underway with previous trenches in foreground
_DSC1188	N	View along slope on eastern end of North Field
_DSC1191	E	Wide angle view of North Field from hill at gun range
_DSC1192	E	Wide angle view of North Field from hill at gun range
_DSC1194	SE	Wide angle view of North Field from hill at gun range
_DSC1195	SE	Looking towards Fyfe Hill from gun range
_DSC1199	E	Section of test pit for buried horizon in Trench 58.
_DSC1202	S	Backfilling of test pit in Trench 58
_DSC1204	S	Topsoil strip in Trench 58, nearing completion
_DSC1205	N	Trench 58 Completed
_DSC1206	S	Flooding in trench 59 after heavy rains
_DSC1210	S	Flooding in Trench 58 and Trench 57 underway
_DSC1269	E	Trench 57 underway
_DSC1270	N	General view of standing water in boggy area, NE corner of North Field
_DSC1316	S	Trench 57 completed
_DSC1316	S	Trench 57 completed
_DSC1318	N	Trench 57 completed
_DSC1521	NE	Trench 56 nearing completion
_DSC1526	N	Heavy plough scarring in Trench 56
_DSC1542	N	Trench 55 nearing completion
_DSC1543	S	Trench 54 nearing completion
_DSC1647	S	Standing water in Trench 53
_DSC1649	NE	Depth and profile in Trench 52
_DSC1650	NE	Depth and profile in Trench 52
_DSC1653	N	Trench 52 nearing completion
_DSC1664	NE	Trench 51 underway
_DSC1665	S	Standing water in Trench 51 from substantial January rains
_DSC1666	NE	General view of trenches in North Field
_DSC1667	SE	General view of trenches in North Field.
_DSC1669	S	Trench 64 underway. This trench was added on the eastern edge of field after main body was trenched.
_DSC1672	E	Trench 64 nearing completion
_DSC1673	E	Trench 64 nearing completion
_DSC1758	N	Heavy rains during completion of Trench 64
_DSC1760	NE	Trench 65 underway
_DSC1762	S	Trench 64 completed
_DSC1763	N	Trench 64 completed

_DSC1764	SE	Trench 65 completed
_DSC1765	SE	Trenches 64 and 65 completed
_DSC1767	NE	Trench 65, general view
_DSC1768	NE	Plough scarring in Trench 65
_DSC1769	NE	Plough scarring in Trench 65
_DSC1776	S	Trench 50 underway in Mid-Field
_DSC1779	N	Trench 49 underway in Mid-Field
_DSC1782	S	Trench 48 underway in Mid-Field
_DSC1803	--	Possible post in Trench 48 – later discounted as stonehole.
_DSC1808	--	Stonehole in Trench 48, post-excavation
_DSC1809	--	Profile of stonehole in Trench 48
_DSC1810	NW	Trenches 46-50, completed
_DSC1764	N	Trench 46, completed
_DSC1817	N	Trenches 46-50, completed
_DSC1845	SW	View towards Fyfe Hill and Pines from area south of Mid-Field
_DSC1847	E	View of Fyfe Hill
_DSC1866	S	View from Fyfe Hill, prior to trenching
_DSC1867	E	View of South Field from Fyfe Hill
_DSC1878	SE	Fencing along margins of Fyfe Hill area
_DSC1888	N	General view looking north towards Mid-Field from Fyfe Hill
_DSC1889	N	General view looking north towards Mid-Field from Fyfe Hill
_DSC2029	ENE	Topsoil strip in Trench 44
_DSC2036	S	Trench 43 nearing completion
_DSC2038	N	Trench 42 nearing completion
_DSC2039	S	Trench 42 completed
_DSC2047	SW	General view across Mid-Field
_DSC2048	S	Trench 42 commencing, Mid-field
_DSC2094	SW	Trenches 39-41 to complete Mid-field (T66 remaining)
_DSC2095	SW	Trench 39 completed, Mid-field
_DSC2096	NW	Trench 41 completed, Mid-field
_DSC2097	N	Southern end of Trench 42, Mid-field
_DSC2099	N	Trench 42 looking north, Mid-field
_DSC2101	S	Trench 27 with Trenches 36 & 37 extensions – South Field ‘Annex’ at base of Fyfe Hill
_DSC2102	S	Trench 27 with Trenches 36 & 37 extensions – South Field ‘Annex’ at base of Fyfe Hill
_DSC2103	SE	Trench 38 completed, South Field Annex
_DSC2104	SE	Trench 37 completed, South Field Annex
_DSC2105	SE	Trench 36 completed, South Field Annex
_DSC2106	N	North end of Trench 27, Annex
_DSC2110	N	Trench 26, Annex, commencing
_DSC2111	N	Modern plough scarring, Trench 26, Annex
_DSC2113	N	Trench 26, Annex, Mid-point with field drain in foreground
_DSC2115	--	Trench 26, Annex, Clay drain tile in situ
_DSC2116	S	Trench 26 nearing completion
_DSC2123	E	Trench 35 underway, Annex
_DSC2124	NW	Trench 25, Annex
_DSC2126	NW	Trenches 35 (foreground) and Trench 34, Annex
_DSC2132	NW	Trench 35 completed, Annex, North base of

		Fyfe Hill
_DSC2133	SE	Trench 35 completed, Annex, North base of Fyfe Hill
_DSC2134	S	Trench 29, Fyfe Hill
_DSC2139	NW	From L to R: Trenches 30-33 and 29, Fyfe Hill
_DSC2141	E	Trench 31, standing water quickly accumulating, Fyfe Hill, completed
_DSC2142	E	Trench 32, Fyfe Hill, completed
_DSC2143	E	Trench 33 completed, Fyfe Hill
_DSC2144	E	Deepening of topsoil deposits, eastern end of Trench 33, Fyfe Hill.
_DSC2146	N	Trench 28 completed, Fyfe Hill
_DSC2147	NW	Trench 24a, cleaning in wooded area south of Fyfe Hill
_DSC2149	NW	Trenches 24a & b, clearing in wooded area south of Fyfe Hill
_DSC2152	NW	Trenches 24a & b, clearing in wooded area south of Fyfe Hill
_DSC2154	NW	Trenches 24a & b completed, clearing in wooded area south of Fyfe Hill
_DSC2155	NW	Modern plough scarring in Trench 24b, wooded area south of Fyfe Hill
_DSC2157	SE	Trench 24a, completed
_DSC2169	E	Trench 66, Mid-field, added on final day, completed
_DSC2172	W	Trench 66, Mid-field, added on final day, completed



_DSC1166.jpg



_DSC1168.jpg



_DSC1170.jpg



_DSC1171.jpg



_DSC1173.jpg



_DSC1180.jpg



_DSC1188.jpg



_DSC1191.jpg



_DSC1192.jpg



_DSC1194.jpg



_DSC1195.jpg



_DSC1199.jpg



_DSC1202.jpg



_DSC1204.jpg



_DSC1205.jpg



_DSC1206.jpg



_DSC1207.jpg



_DSC1210.jpg



_DSC1269.jpg



_DSC1270.jpg



_DSC1316.jpg



_DSC1317.jpg



_DSC1318.jpg



_DSC1521.jpg



_DSC1523.jpg



_DSC1526.jpg



_DSC1542.jpg



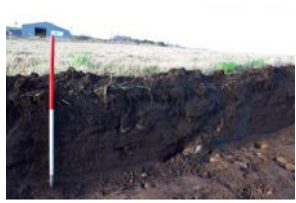
_DSC1543.jpg



_DSC1647.jpg



_DSC1649.jpg



_DSC1650.jpg



_DSC1653.jpg



_DSC1664.jpg



_DSC1665.jpg



_DSC1666.jpg



_DSC1667.jpg



_DSC1669.jpg



_DSC1672.jpg



_DSC1673.jpg



_DSC1758.jpg



_DSC1760.jpg



_DSC1762.jpg



_DSC1763.jpg



_DSC1764.jpg



_DSC1765.jpg



_DSC1767.jpg



_DSC1768.jpg



_DSC1769.jpg



_DSC1776.jpg



_DSC1779.jpg



_DSC1782.jpg



_DSC1803.jpg



_DSC1808.jpg



_DSC1809.jpg



_DSC1810.jpg



_DSC1813.jpg



_DSC1814.jpg



_DSC1817.jpg



_DSC1845.jpg



_DSC1847.jpg



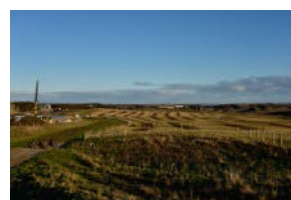
_DSC1866.jpg



_DSC1867.jpg



_DSC1878.jpg



_DSC1888.jpg



_DSC1889.jpg



_DSC2029.jpg



_DSC2036.jpg



_DSC2038.jpg



_DSC2039.jpg



_DSC2047.jpg



_DSC2048.jpg



_DSC2094.jpg



_DSC2095.jpg



_DSC2096.jpg



_DSC2097.jpg



_DSC2099.jpg



_DSC2101.jpg



_DSC2102.jpg



_DSC2103.jpg



_DSC2104.jpg



_DSC2105.jpg



_DSC2106.jpg



_DSC2110.jpg



_DSC2111.jpg



_DSC2113.jpg



_DSC2115.jpg



_DSC2116.jpg



_DSC2123.jpg



_DSC2124.jpg



_DSC2126.jpg



_DSC2132.jpg



_DSC2133.jpg



_DSC2134.jpg



_DSC2139 (4000x2670).jpg



_DSC2141 (2670x4000).jpg



_DSC2142 (2670x4000).jpg



_DSC2143 (2670x4000).jpg



_DSC2144 (2670x4000).jpg



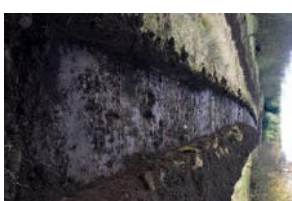
_DSC2146 (2670x4000).jpg



_DSC2147 (2670x4000).jpg



_DSC2149 (4000x2667).jpg



_DSC2152 (2667x4000).jpg



_DSC2154 (4000x2667).jpg



_DSC2155 (2667x4000).jpg



_DSC2157 (2667x4000).jpg



_DSC2169 (4000x2667).jpg



_DSC2172 (4000x2667).jpg



_DSC8739.jpg



_DSC8740.jpg



_DSC8743.jpg



_DSC8744.jpg



_DSC8746.jpg



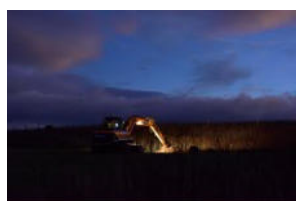
_DSC8747.jpg



_DSC8748.jpg



_DSC8750.jpg



_DSC8791.jpg



_DSC8799.jpg



_DSC8800.jpg



_DSC8803.jpg



_DSC8804.jpg



_DSC8808.jpg



_DSC8810.jpg



_DSC8816.jpg



_DSC8821.jpg



_DSC8824.jpg



_DSC8825.jpg



_DSC8827.jpg



_DSC8838.jpg



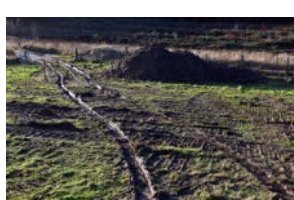
_DSC8929.jpg



_DSC8930.jpg



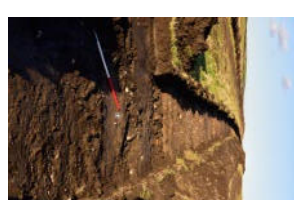
_DSC8962.jpg



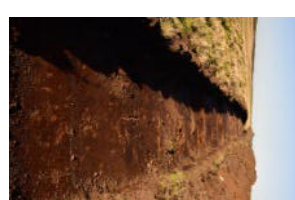
_DSC8970.jpg



_DSC8997.jpg



_DSC8999.jpg



_DSC9006.jpg



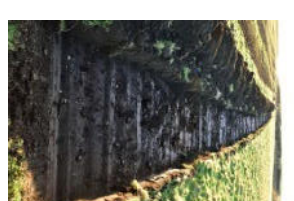
_DSC9189.jpg



_DSC9193.jpg



_DSC9208.jpg



_DSC9209.jpg



_DSC9210.jpg



_DSC9211.jpg



_DSC9213.jpg



_DSC9228.jpg



_DSC9233.jpg



_DSC9269.jpg



_DSC9511.jpg



_DSC9512.jpg



_DSC9513.jpg



_DSC9514.jpg



_DSC9515.jpg



_DSC9516.jpg



_DSC9517.jpg



_DSC9518.jpg



_DSC9519.jpg



_DSC9520.jpg



_DSC9521.jpg



_DSC9522.jpg



_DSC9523.jpg



_DSC9524.jpg



_DSC9525.jpg



_DSC9527.jpg



_DSC9528.jpg



_DSC9530.jpg



_DSC9533.jpg



_DSC9534.jpg



_DSC9535.jpg



_DSC9538.jpg



_DSC9539.jpg



_DSC9540.jpg



_DSC9541.jpg



_DSC9542.jpg



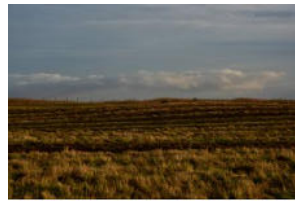
_DSC9543.jpg



_DSC9544.jpg



_DSC9545.jpg



_DSC9546.jpg



_DSC9547.jpg



DSC_7461.jpg



DSC_7464.jpg



DSC_7466.jpg



DSC_7467.jpg



DSC_7468.jpg



DSC_7470.jpg



DSC_7471.jpg



DSC_7472.jpg



DSC_7473.jpg



DSC_7475.jpg



DSC_7476.jpg



DSC_7477.jpg



DSC_7478.jpg



DSC_7479.jpg



DSC_7489.jpg



DSC_7491.jpg



_DSC2474.JPG



_DSC2475.JPG



_DSC2476.JPG



_DSC2477.JPG



_DSC2478.JPG



_DSC2479.JPG



_DSC2480.JPG



_DSC2481.JPG



_DSC2482.JPG



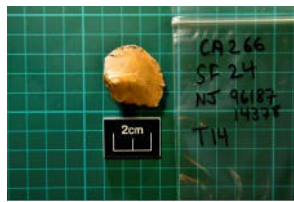
_DSC2483.JPG



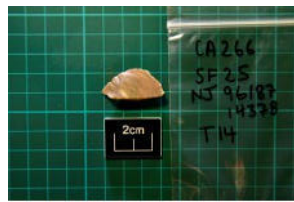
_DSC2484.JPG



_DSC2485.JPG



_DSC2486.JPG



_DSC2487.JPG



_DSC2488.JPG



_DSC2489.JPG



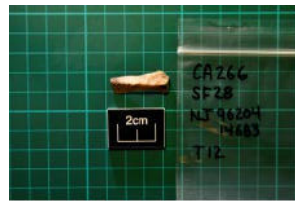
_DSC2490.JPG



_DSC2491.JPG



_DSC2492.JPG



_DSC2493.JPG



_DSC2494.JPG



_DSC2495.JPG



_DSC2496.JPG



_DSC2497.JPG



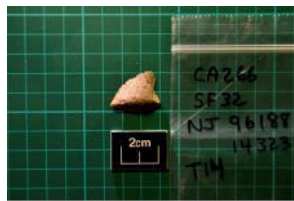
_DSC2498.JPG



_DSC2499.JPG



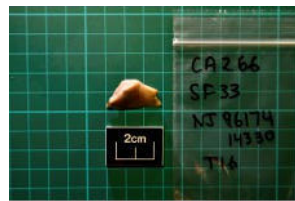
_DSC2500.JPG



_DSC2501.JPG



_DSC2503.JPG



_DSC2504.JPG



_DSC2505.JPG



_DSC2506.JPG



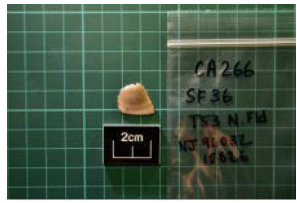
_DSC2507.JPG



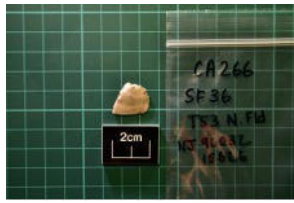
_DSC2508.JPG



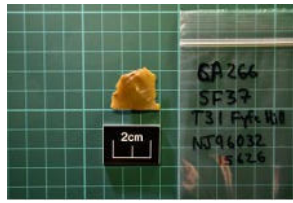
_DSC2509.JPG



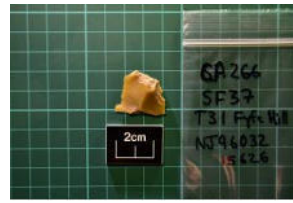
_DSC2510.JPG



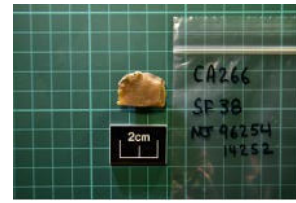
_DSC2511.JPG



_DSC2512.JPG



_DSC2513.JPG



_DSC2514.JPG



_DSC2515.JPG



_DSC2516.JPG



_DSC2517.JPG



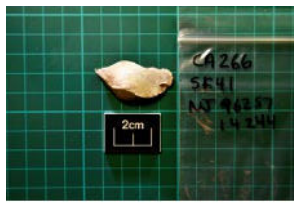
_DSC2518.JPG



_DSC2519.JPG



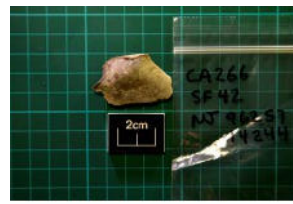
_DSC2520.JPG



_DSC2521.JPG



_DSC2522.JPG



_DSC2523.JPG



_DSC2524.JPG



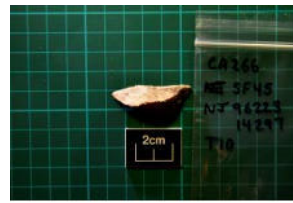
_DSC2525.JPG



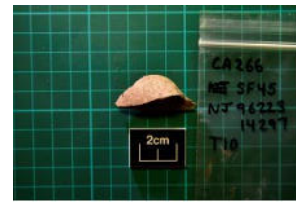
_DSC2526.JPG



_DSC2527.JPG



_DSC2528.JPG



_DSC2529.JPG



_DSC2530.JPG



_DSC2531.JPG



_DSC2532.JPG



_DSC2533.JPG



_DSC2534.JPG



_DSC2535.JPG



_DSC2536.JPG



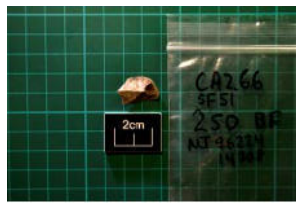
_DSC2537.JPG



_DSC2538.JPG



_DSC2539.JPG



_DSC2540.JPG



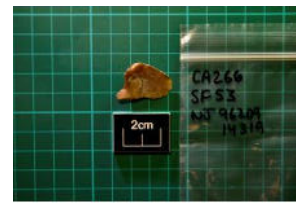
_DSC2541.JPG



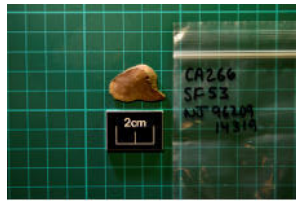
_DSC2542.JPG



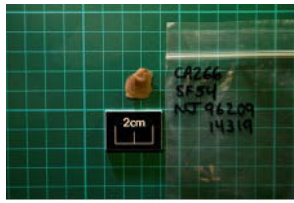
_DSC2543.JPG



_DSC2544.JPG



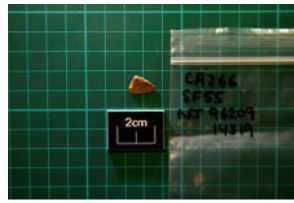
_DSC2545.JPG



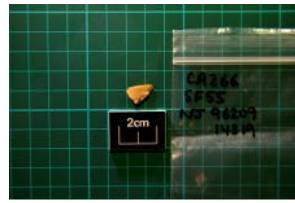
_DSC2546.JPG



_DSC2547.JPG



_DSC2548.JPG



_DSC2549.JPG



_DSC2550.JPG



_DSC2551.JPG



_DSC2552.JPG



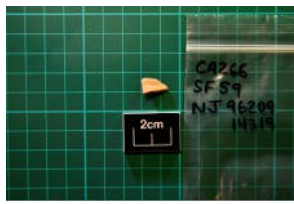
_DSC2553.JPG



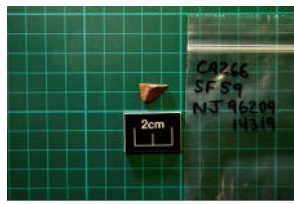
_DSC2554.JPG



_DSC2555.JPG



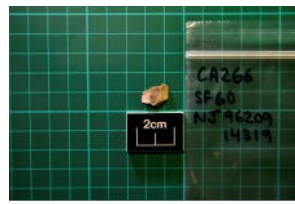
_DSC2556.JPG



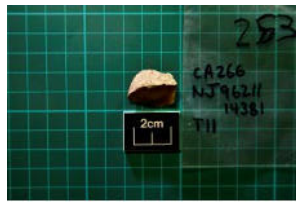
_DSC2557.JPG



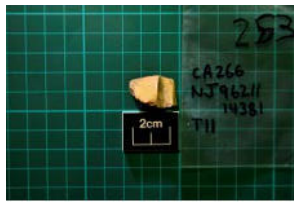
_DSC2558.JPG



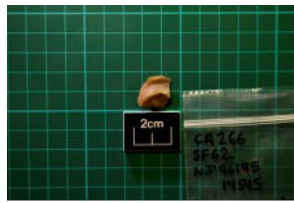
_DSC2559.JPG



_DSC2560.JPG



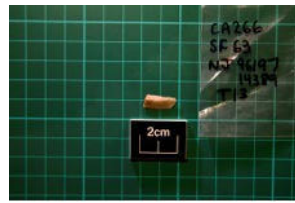
_DSC2561.JPG



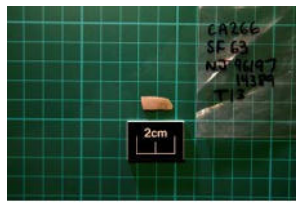
_DSC2562.JPG



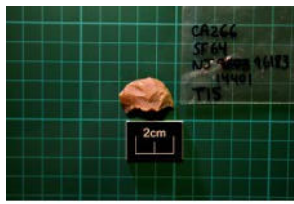
_DSC2563.JPG



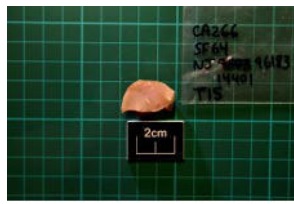
_DSC2566.JPG



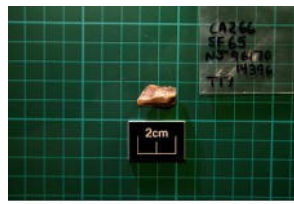
_DSC2567.JPG



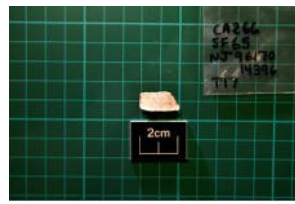
_DSC2568.JPG



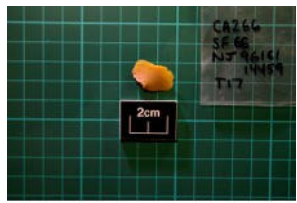
_DSC2569.JPG



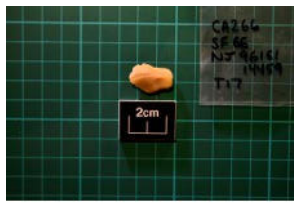
_DSC2570.JPG



_DSC2571.JPG



_DSC2572.JPG



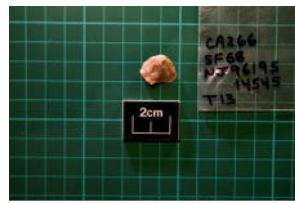
_DSC2573.JPG



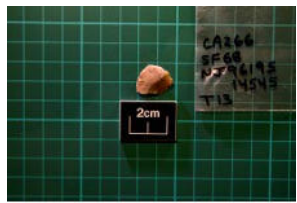
_DSC2574.JPG



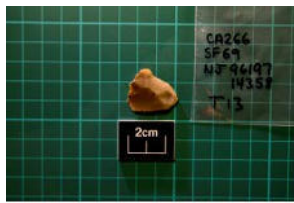
_DSC2575.JPG



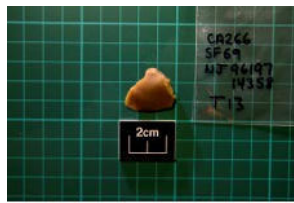
_DSC2576.JPG



_DSC2577.JPG



_DSC2578.JPG



_DSC2580.JPG