

**Phase 5, Greenacres, Wester Clerkhill, Peterhead,
Aberdeenshire, AB42 3PT**

Report and Data Structure Report (DSR)



**Alison Cameron
Cameron Archaeology
17 February 2016**

CONTENTS

1	INTRODUCTION	3
2	ARCHAEOLOGICAL BACKGROUND	4
3	THE ARCHAEOLOGICAL EVALUATION	4
4	SUMMARY AND CONCLUSIONS	6
5	REFERENCES	6
6	ACKNOWLEDGEMENTS	6
	APPENDIX 1 MAPS.....	7
	APPENDIX 2 FINDS	13
	APPENDIX 3 PHOTOGRAPHS	16

ILLUSTRATIONS

Cover Trench 26 showing areas of higher elevation with palaeochannel in between; facing ENE

Illus 1	Location plan	3
Illus 2	Trench 24 showing area of stone holes, field drains and plough scars.....	6
Illus 3	Plan showing evaluation trenches	5
Illus 4	Gordon's map of c 1636-52 showing 'Clerkhill'	7
Illus 5	Blaeu's map of 1654 showing 'Clerkhill'	7
Illus 6	Roy Military Survey of Scotland, 1747-55 showing 'Clarkhill'	8
Illus 7	1 st Edition OS map showing outline of proposed development.....	9
Illus 8	2 nd Edition OS map showing outline of proposed development.	10
Illus 9	3 rd edition OS with proposed development outlined.	11
Illus 10	1973 aerial photograph of the approximate outline of proposed development area.	12
Illus 11	Flints collected from Tr 22/23.....	14
Illus 12	Flints collected from Tr 24 west	14
Illus 13	Flints collected from Tr 24/25 west.....	15
Illus 14	Flints collected from Tr 25 west	15

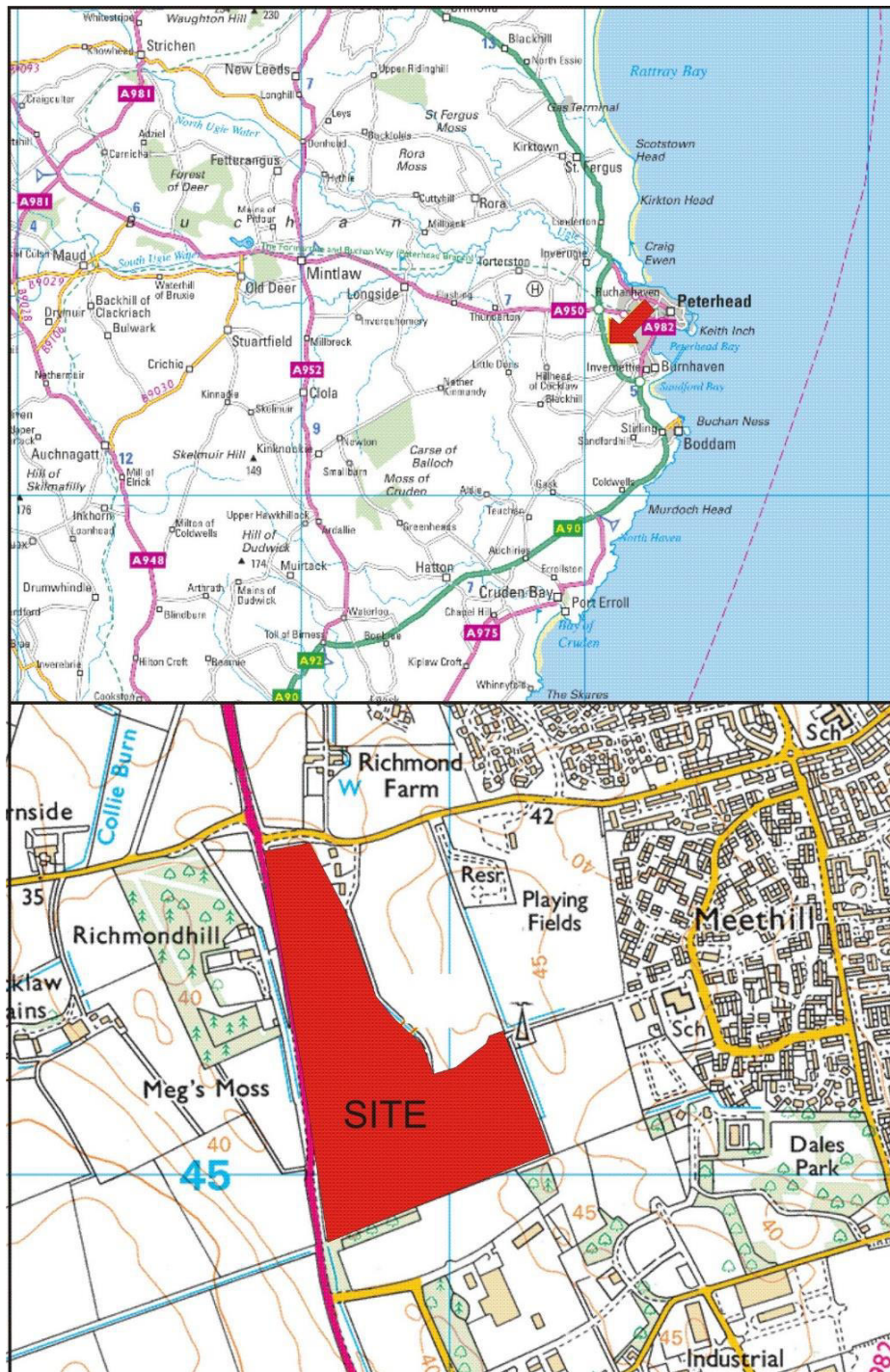
SUMMARY

An archaeological evaluation was carried out from 2-10 December 2015. 29 trenches totalling 5000 linear metres were excavated with a 14 ton tracked machine and 2m ditching bucket totalling 5% of the total proposed development area. 997 flints were collected from two fields and in topsoil in the 29 trenches over the area of the proposed development. They include bipolar and platform cores and possible scraper (Torben Ballin pers comm). No features were identified and with the shallow topsoil and extensive damage from agricultural practices it is unlikely that shallow features will survive on this site.

Claymore Homes have confirmed that the field will not be ploughed and after discussion with Aberdeenshire Archaeologist Bruce Mann it is recommended that no further fieldwork is required at this site. A Post-Excavation Research Design (PERD) has been prepared for the report on the flints and publication.

1 INTRODUCTION

- 1.1 The site (Illus 1) is located on the E side of the A90 on the W side of Peterhead between Meethill and Richmondhill. It is centred on NGR NK 10886 45257, at 35-45m OD (Illus 1) and in the parish of Peterhead.
- 1.2 The work was commissioned by Alastair Rennie, Claymore Homes. The site is being prepared for a planning application to Aberdeenshire Council and they require a 5% archaeological evaluation.
- 1.3 All the archaeological work was carried out in the context of Scottish Planning Policy (SPP) Planning Advice Note (PAN 2/2011) and Scottish Historic Environment Policy (SHEP), which state that archaeological remains should be regarded as part of the environment to be protected and managed.



Illus 1 Location plan (Contains Ordnance Survey data © Crown copyright and database right 2015)

2 ARCHAEOLOGICAL BACKGROUND

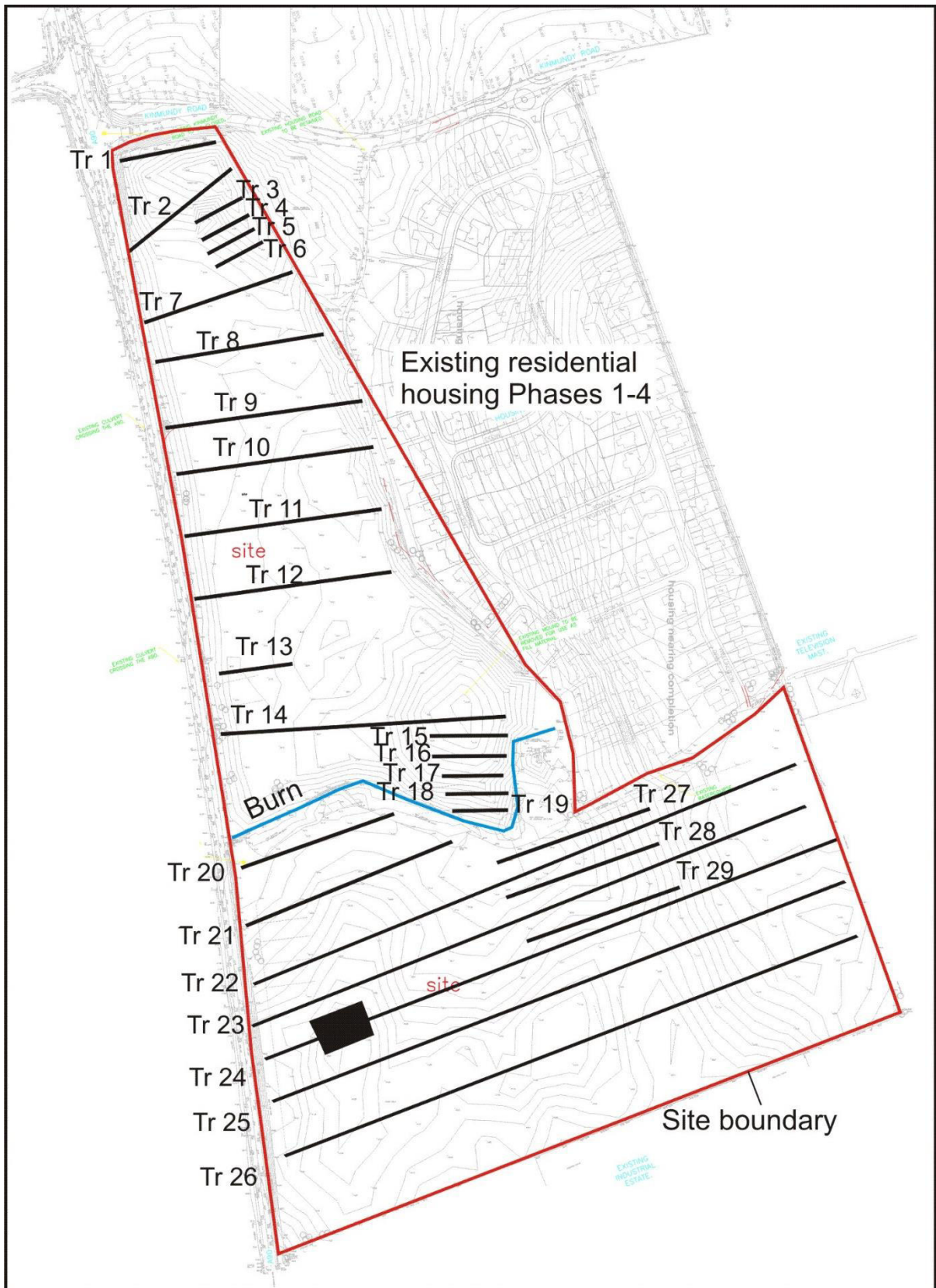
- 2.1 There are no Scheduled Ancient Monuments within 1km of the proposed development.
- 2.2 300m to the S of the proposed development is the site of Fairy Hillock (NK14SW 68), a natural mound formed into an 18th or 19th-century garden feature. A trench revealed that this was a natural mound and it has now been removed to create an industrial yard (Murray and Murray 2008, 27).
- 2.3 There are 19th-century farmhouses at Wester Clerkhill, Richmond Farm (NK14NW 360), Richmondhill House (NK14NW 361; Listed B), Cocklaw Mains (NK14NW 69), Whitehill House (NK14SW 13) and Lodge (NK14SW 13.1), Dales Cottage (NK14NW 362) and Wellington (NK14SW 12).
- 2.4 Early maps (Illus 3-5) show Clerkhill and Clarkhill but nothing in the area of the proposed development.
- 2.5 1st, 2nd and 3rd edition OS maps (Illus 6-8) show the proposed development area as fields associated with the farm (Easterton of Clerkhill, later Westerton of Clerkhill).
- 2.6 Aerial photographs reveal no obvious features which may be archaeological (Illus 9).

3 THE ARCHAEOLOGICAL EVALUATION

An archaeological evaluation was carried out from 2-10 December 2015. 29 trenches totalling 5000 linear metres were excavated with a 14 ton tracked machine and 2m ditching bucket totalling 5% of the total proposed development area. A total of 997 flints were recovered from the topsoil and fieldwalking the site (Appendix 2). They include bipolar and platform cores and possible scraper (Torben Ballin pers comm).

The northern field has two raised knolls and 19 trenches were excavated in this field. A small number of flints were found in topsoil across the field (Appendix 2). The topsoil was shallow (0.1-0.2m deep) and the subsoil was mostly pink and grey clay. The field is waterlogged and there were numerous stone field drains and ceramic drains running across the field. Plough scars into the natural were identified in most trenches. No archaeological features were identified.

The southern field was also waterlogged with shallow topsoil, field drains and plough scars in most trenches. There were two areas of raised elevation with a palaeochannel between up to 0.5m deep (see cover illus). Flints were found throughout the field but concentrations were recovered from the higher elevations of Trenches 23-26 (Appendix 2). A concentration of flints were found at the west end of Trench 24 along with potential features and an area 20x30m was opened. The features were half sectioned but were identified as stone hole; there were several large stones *in situ* in the natural subsoil in this area whereas the remainder of the site was stone free. The damage to the site by intensive ploughing was evident in this area (Illus 2).



Illus 2 Plan showing evaluation trenches (copyright Claymore Homes)



Illus 3 Trench 24 showing area of stone holes, field drains and plough scars

4 SUMMARY AND CONCLUSIONS

997 flints were collected from two fields and 29 trenches over the area of the proposed development. They include bipolar and platform cores and possible scraper (Torben Ballin pers comm). No features were identified and with the shallow topsoil and extensive damage from agricultural practices it is unlikely that shallow features will survive on this site. Claymore Homes have confirmed that the field will not be ploughed and after discussion with Aberdeenshire Archaeologist Bruce Mann it is recommended that no further fieldwork is required at this site. A Post-Excavation Research Design (PERD) has been prepared for the report on the flints and publication.

5 REFERENCES

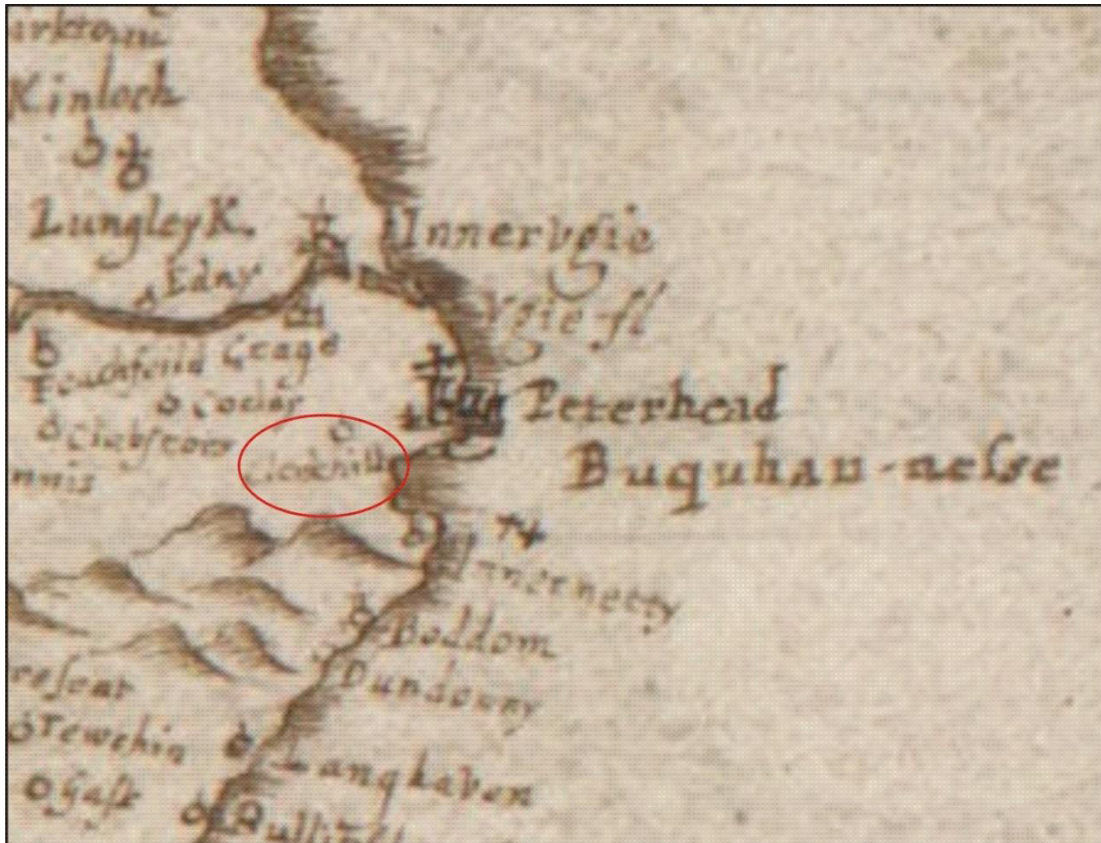
Murray and Murray, HK and JC. 2008 Fairy Hillock, Dales Industrial Estate, Peterhead, Aberdeenshire (Peterhead parish), watching brief and recording', Discovery Excav Scot, New, vol. 9, 2008. Cathedral Communications Limited, Wiltshire, England, 27.

6 ACKNOWLEDGEMENTS

Thanks to Alastair Rennie, Claymore Homes for commissioning this project, staff of Claymore Homes on site and to Bruce Mann and Claire Herbert for their advice during the work.

**Cameron Archaeology, 45 View Terrace
Aberdeen, AB25 2RS
01224 643020
07581 181057
cameronarch@btinternet.com
www.cameronarchaeology.com**

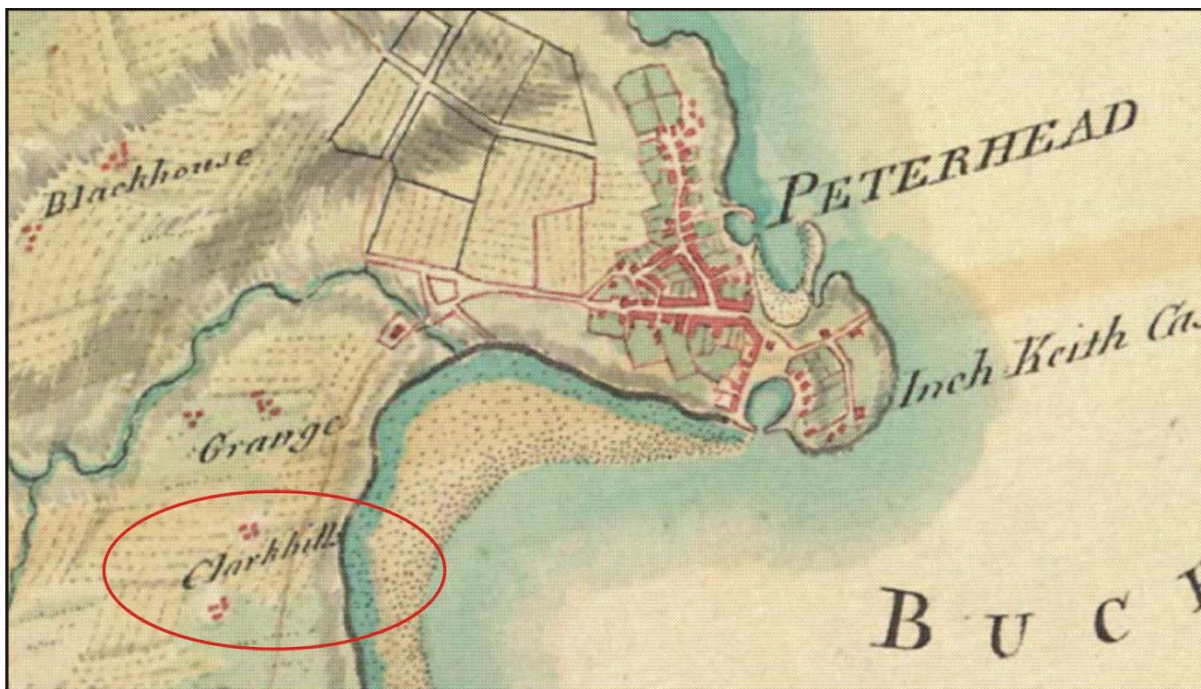
APPENDIX 1 MAPS



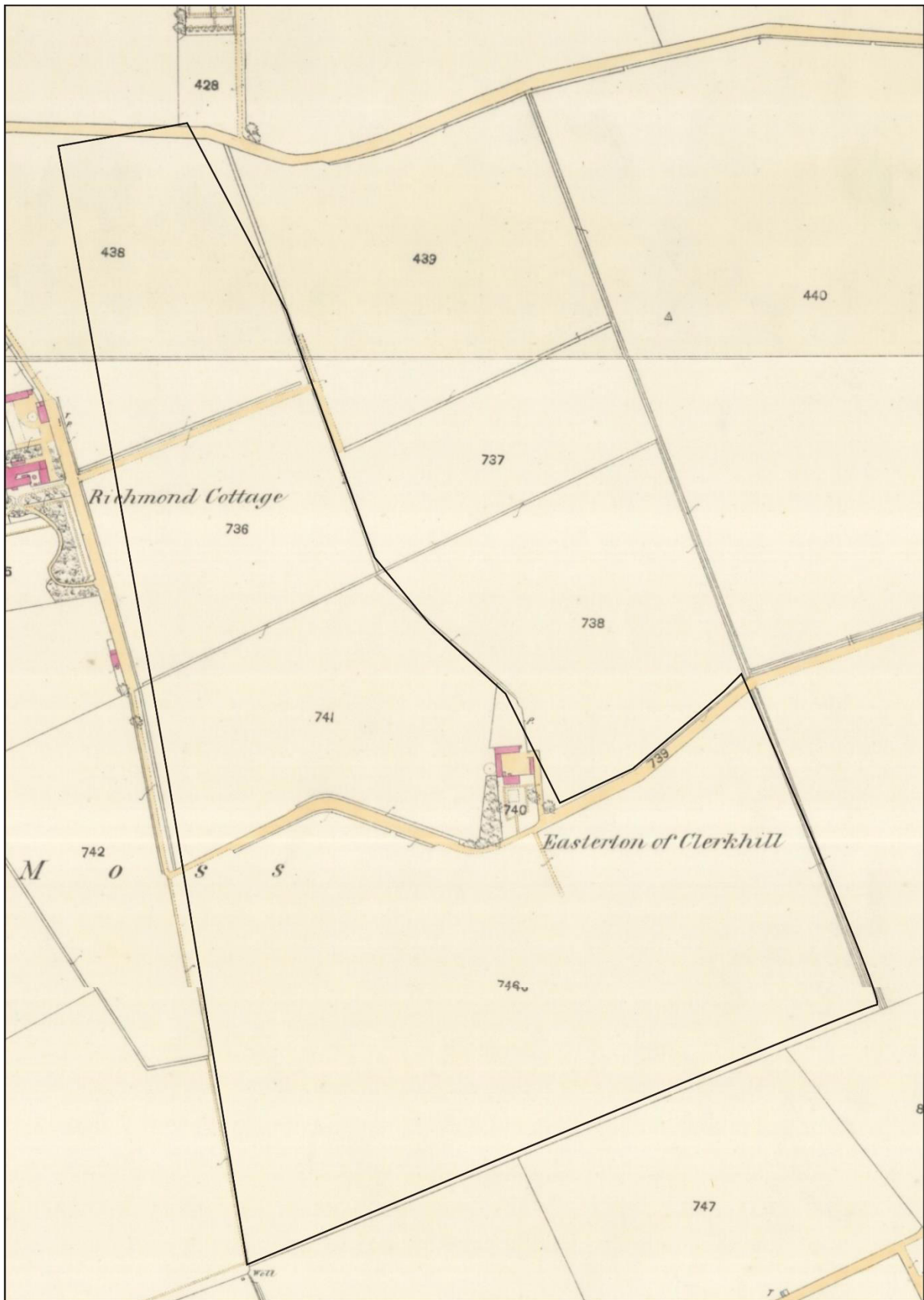
Illus 4 Gordon's map of c 1636-52 showing 'Clerkhill' (copyright National Library of Scotland)



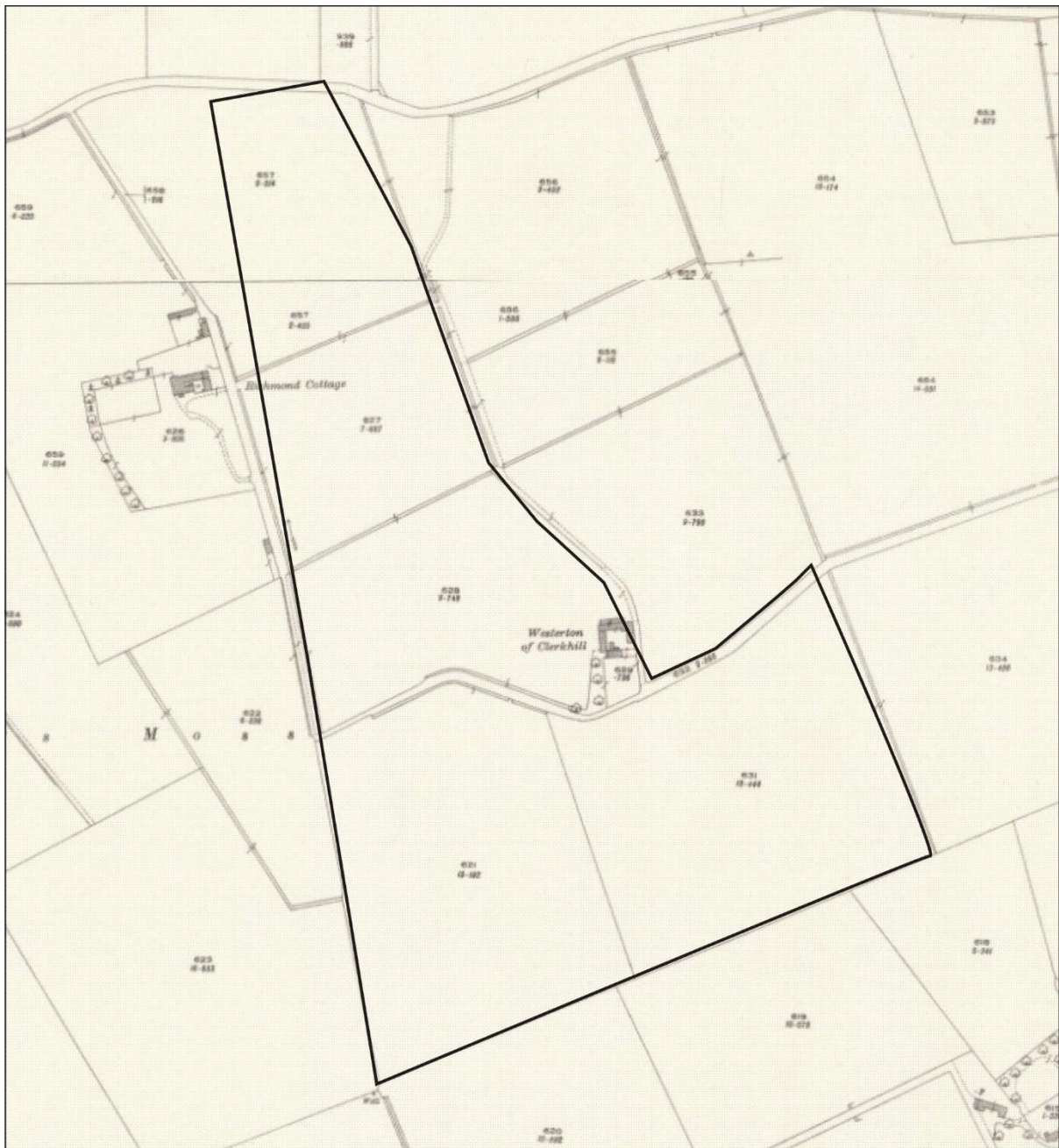
Illus 5 Blaeu's map of 1654 showing 'Clerkhill' (copyright National Library of Scotland)



Illus 6 Roy Military Survey of Scotland, 1747-55 showing 'Clarkhill' (copyright National Library of Scotland)



Illus 7 1st Edition OS map showing outline of proposed development. Aberdeen Sheet XXIII.10/06 (Peterhead) Survey date: 1868 Publication date: 1872 (copyright National Library of Scotland)



Illus 9 3rd edition OS with proposed development outlined. Aberdeenshire 023.06/10 (includes: Peterhead) Publication date: 1926 Revised: 1924 Levelled: 1900



Illus 10 1973 aerial photograph of the approximate outline of proposed development area
UNI: NCAP-000-000-073-908 (copyright NCAP)

APPENDIX 2 FINDS

Context	Flint nodules	Struck flints?	SF no
Tr2 E	3	2	17
Tr3/4 E end	10	1	1
Tr7 E end	4	1	8
Tr8/9	1	0	10
Tr 11	2	0	14
Tr14	10	1	20
Tr19	2	0	11
Tr22 E	0	14	16
Tr22/23	22	17	15
Tr23 west	47	19	6
Tr24	3	1	2
Tr24 west	64	79	7
Tr24 stone hole	6	2	12
Tr24 E centre	20	32	9
Tr24 E	14	14	18
Tr24 W	31	31	19
Tr24	10	3	13
Tr24/25 west	14	5	4
Tr 25 centre	28	43	5
Tr25W	3	1	3
Tr25 E	34	69	21
Tr25W	30	19	24
Tr26 E	10	9	23
Tr26W	80	26	25
Tr26 centre	80	42	27
Tr28	11	7	26
Tr29	10	10	22



Illus 11 Flints collected from Tr 22/23



Illus 12 Flints collected from Tr 24 west



CA269
TR24/5
WEND

Illus 13 Flints collected from Tr 24/25 west



CA269
TR25 W 24

Illus 14 Flints collected from Tr 25 west

APPENDIX 3 PHOTOGRAPHS

Photo no	Description	Facing
DSC_2904-9	Stone holes infilled with black soil; ceramic drain pipe on base of one	
DSC_2910-18	20-30m area opened around stone holes showing extensive field drains and ploughing scars; area of many flints	
IMG_3168-9	Stone hole half sectioned Tr 24	E
PC020264-5	Field 1 from N end	S/SSE
PC020267-9	Tr 1 showing shallow topsoil (0.15-0.2m) and plough scars	E
PC020270-1	Tr 1 showing shallow topsoil (0.15-0.2m) and plough scars	W
PC020272-3	Tr 1 plough scars	ESE/S
PC020274-5	Tr 1	W
PC020276	View from Tr 1	S
PC020277-8	Tr 2 NE end	SW
PC020279-80	Tr 2 NE end	SW
PC020281-302	Tr 2 field drains and plough scars	SW
PC020303-4	Tr 3 NE end	SW
PC020308-16	Tr 4 showing plough scars, field drains and shallow topsoil, 15-20cm max	SW/NE
PC020318-20	Tr 5 showing plough scars, field drains and shallow topsoil, 15-20cm max	SW/NE
PC020321-23	Tr 6 showing plough scars, field drains and shallow topsoil, 15-20cm max	SW/NE
PC020324	Tr 7 E end	W
PC020325-34	Tr 7 (with Tr 2-6 in background) showing shallow topsoil and flooding	W/WNW
PC020335	Tr 8 W end	E
PC020336-39	Tr 8 flooding and shallow topsoil	E/ENE
PC020340	Tr 9 E end	W
PC020341-2	View of Tr 1-8	NNE
PC020343-44	Tr 9 showing plough scars, field drains and shallow topsoil, 15-20cm max	W
PC020345-50	Tr 10 showing plough scars, field drains and shallow topsoil, 15-20cm max	E
PC020351-61	Tr 11 showing plough scars, field drains and shallow topsoil, 15-20cm max	W
PC020362-66	Tr 12 showing plough scars, field drains and shallow topsoil, 15-20cm max	W
PC020367-74	Tr 13 showing plough scars, field drains and shallow topsoil, 15-20cm max and dumping and disturbance at E end of trench	E
PC020375	Tr 14	E
PC020376-81	Tr 14 palaeochannel with buried articulated ?sheep bones	E
PC020382-91	Tr 14 (waterlogged in centre)	E
PC020392	Tr 14 complete	W
PC020393	Tr 15 E end	W
PC020394-7	Tr 15 field drain trenches	
PC020398-9	Tr 15 W end	E
PC020400	Tr 16 E end	W
PC020402	Tr 16 W end	E
PC020403-4	Tr 17 E end showing pink clay with plough scars and shallow topsoil	W/NW
PC020405	Tr 17 field drain	
PC020406	Tr 17 W end	E
PC020407	Tr 18 E end	W

PC020408	Tr 18 W end	E
PC020409	Tr 19 E end	W
PC020410-24	Tr 19 field drains, shallow topsoil and plough scars	W
PC020425-6	Tr 20 W end plough scars and shallow topsoil	E
PC020427-28	Tr 20 E end	W
PC020429-36	Tr 21 E end field drains and plough scars	W
PC020436	Tr 21 W end	E
PC020437-53	Tr 22 W end and trench with field and stone drains and plough scars	E
PC020454-60	Palaeochannel with deeper (0.4m) organic soil and filed drain at base	E
PC020467-70	Tr 22 E end	W
PC020471	Tr 23 E end	W
PC020472-91	Tr 23 field drains, plough scars, shallow topsoil, stone drains	W
PC020493	Tr 24 W end	E
PC020494-500	Tr 24 20x30m opened showing stone holes and plough marks	
PC020501-12	Tr 24 E end showing deeper areas of palaeochannels, stone drains, field drains and plough scars	E
PC020513-15	View from E end Tr 25	W
PC020516-21	Tr 25	W
PC020522-28	Tr 26	E
PC020529-30	Tr 26 palaeochannel	E
PC020531-43	Tr 26	E
PC020544-49	Tr 27 E end	W
PC02050-54	Tr 28	E
PC02055-58	Tr 29	W
FINDS		
DSC_2928-32	Tr 25 centre flints	
DSC_2933-35	Tr 24 flints	
DSC_2936-39	Tr 24 west	
DSC_2940-42	Tr 24 stone hole flints and field drain from base of pit	
DSC_2943-45	Tr 24 centre east flints	
DSC_2946-49	Tr24/25 west flints	
DSC_2950-54	Tr 24 west flints	
DSC_2955-57	Tr 23 west flints	
DSC_2958-60	Tr 19 flints	
DSC_2961-63	Tr 7 east flints	
DSC_2964-65	Tr 8/9 flints	
DSC_2966-67	Tr 11 flints	
DSC_2968-70	Tr 24 flints	
DSC_2971-74	Tr 25 west flints	
DSC_2975-79	Tr 24 west flints	
DSC_2980-81	Tr 23/24 east flints	
DSC_2982-84	Tr 22/23 flints	
DSC_2985-88	Tr 23 flints	
DSC_2989-91	Tr 2 east flints	
DSC_2992-94	Tr 24 east flints	
DSC_2995-98	Tr 24 west flints	
DSC_2999-3000	Tr 14 flints	
DSC_3001-6	Tr 25 east flints	
DSC_3007-9	Tr 24 stone hole ceramic drain pipe flints	
DSC_3068-75	Tr 29 flints	
DSC_3076-79	Tr 26 east flints	
DSC_3080-83	Tr 25 west flints	
DSC_3084-90	Tr 26 west flints	
DSC_3091-94	Tr 28 flints	
DSC_3095-3100	Tr 26 centre flints	



DSC_2904.JPG



DSC_2905.JPG



DSC_2906.JPG



DSC_2907.JPG



DSC_2908.JPG



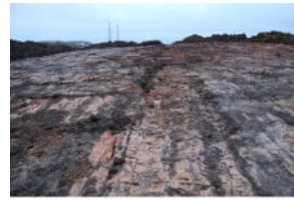
DSC_2909.JPG



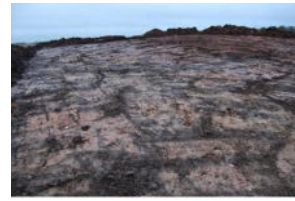
DSC_2910.JPG



DSC_2911.JPG



DSC_2912.JPG



DSC_2913.JPG



DSC_2914.JPG



DSC_2915.JPG



DSC_2916.JPG



DSC_2917.JPG



DSC_2918.JPG



IMG_3168.JPG



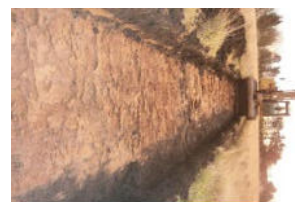
IMG_3169.JPG



PC020264.JPG



PC020265.JPG



PC020267.JPG



PC020268.JPG



PC020269.JPG



PC020270.JPG



PC020271.JPG



PC020272.JPG



PC020273.JPG



PC020274.JPG



PC020275.JPG



PC020276.JPG



PC020277.JPG



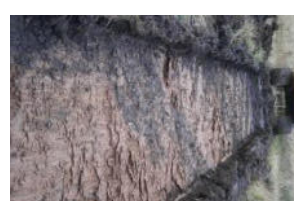
PC020278.JPG



PC020279.JPG



PC020280.JPG



PC020281.JPG



PC020282.JPG



PC020283.JPG



PC020284.JPG



PC020285.JPG



PC020286.JPG



PC020287.JPG



PC020288.JPG



PC020289.JPG



PC020290.JPG



PC020291.JPG



PC020292.JPG



PC020293.JPG



PC020294.JPG



PC020295.JPG



PC020296.JPG



PC020297.JPG



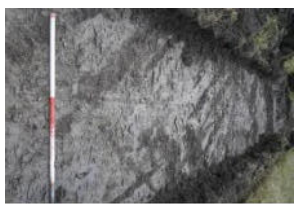
PC020298.JPG



PC020299.JPG



PC020300.JPG



PC020301.JPG



PC020302.JPG



PC020303.JPG



PC020304.JPG



PC020305.JPG



PC020306.JPG



PC020308.JPG



PC020309.JPG



PC020310.JPG



PC020311.JPG



PC020312.JPG



PC020313.JPG



PC020314.JPG



PC020315.JPG



PC020316.JPG



PC020318.JPG



PC020319.JPG



PC020320.JPG



PC020321.JPG



PC020322.JPG



PC020323.JPG



PC020324.JPG



PC020325.JPG



PC020326.JPG



PC020327.JPG



PC020328.JPG



PC020329.JPG



PC020330.JPG



PC020331.JPG



PC020332.JPG



PC020333.JPG



PC020334.JPG



PC020335.JPG



PC020336.JPG



PC020337.JPG



PC020338.JPG



PC020340.JPG



PC020341.JPG



PC020342.JPG



PC020343.JPG



PC020344.JPG



PC030345.JPG



PC030346.JPG



PC030347.JPG



PC030348.JPG



PC030349.JPG



PC030350.JPG



PC030351.JPG



PC030352.JPG



PC030353.JPG



PC030354.JPG



PC030355.JPG



PC030356.JPG



PC030357.JPG



PC030358.JPG



PC030359.JPG



PC030360.JPG



PC030361.JPG



PC030362.JPG



PC030363.JPG



PC030364.JPG



PC030365.JPG



PC030366.JPG



PC030367.JPG



PC030368.JPG



PC030369.JPG



PC030370.JPG



PC030371.JPG



PC030372.JPG



PC030373.JPG



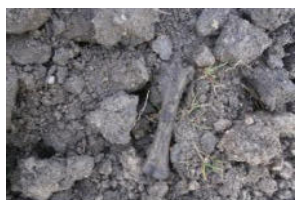
PC030374.JPG



PC030375.JPG



PC030376.JPG



PC030377.JPG



PC030378.JPG



PC030379.JPG



PC030380.JPG



PC030381.JPG



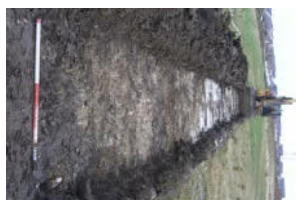
PC030382.JPG



PC030383.JPG



PC030384.JPG



PC030385.JPG



PC030386.JPG



PC030387.JPG



PC030388.JPG



PC030389.JPG



PC030390.JPG



PC030391.JPG



PC030392.JPG



PC030393.JPG



PC030394.JPG



PC030395.JPG



PC030396.JPG



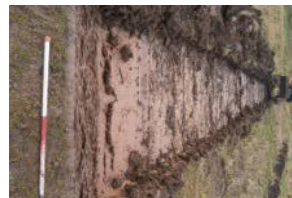
PC030397.JPG



PC030398.JPG



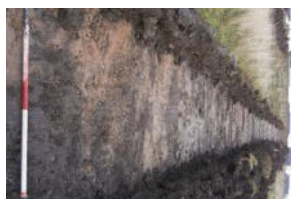
PC030399.JPG



PC030400.JPG



PC030401.JPG



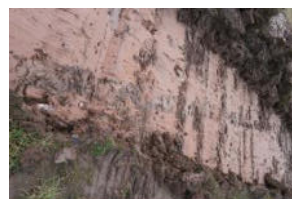
PC030402.JPG



PC030403.JPG



PC030404.JPG



PC030405.JPG



PC030406.JPG



PC030407.JPG



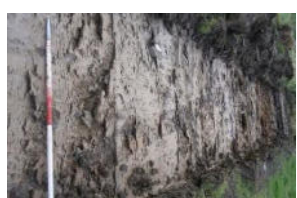
PC030408.JPG



PC030409.JPG



PC030410.JPG



PC030411.JPG



PC030412.JPG



PC030413.JPG



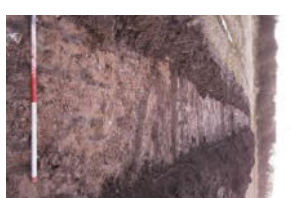
PC040425.JPG



PC040426.JPG



PC040427.JPG



PC040428.JPG



PC040429.JPG



PC040430.JPG



PC040431.JPG



PC040432.JPG



PC040433.JPG



PC040434.JPG



PC040435.JPG



PC040436.JPG



PC040437.JPG



PC040438.JPG



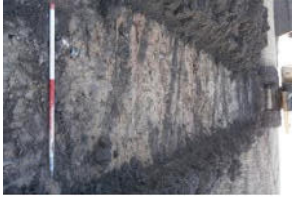
PC040439.JPG



PC040440.JPG



PC040441.JPG



PC040442.JPG



PC040443.JPG



PC040444.JPG



PC040445.JPG



PC040446.JPG



PC040447.JPG



PC040448.JPG



PC040449.JPG



PC040450.JPG



PC040451.JPG



PC040452.JPG



PC040453.JPG



PC040454.JPG



PC040455.JPG



PC040456.JPG



PC040457.JPG



PC040458.JPG



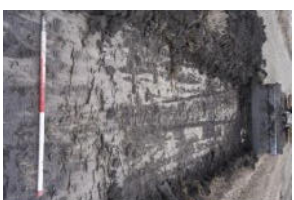
PC040459.JPG



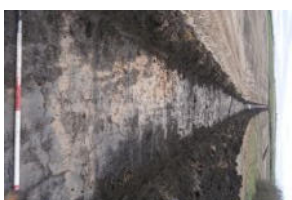
PC040460.JPG



PC040461.JPG



PC040462.JPG



PC040463.JPG



PC040464.JPG



PC040465.JPG



PC040466.JPG



PC040467.JPG



PC040468.JPG



PC040469.JPG



PC040470.JPG



PC040471.JPG



PC040472.JPG



PC040473.JPG



PC040474.JPG



PC040475.JPG



PC040476.JPG



PC040477.JPG



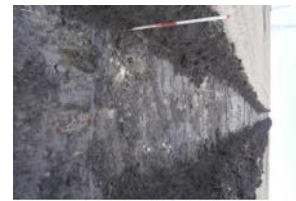
PC040478.JPG



PC040479.JPG



PC040480.JPG



PC040481.JPG



PC040482.JPG



PC040483.JPG



PC070484.JPG



PC070485.JPG



PC070486.JPG



PC070487.JPG



PC070488.JPG



PC070489.JPG



PC070490.JPG



PC070491.JPG



PC070493.JPG



PC070494.JPG



PC070495.JPG



PC070496.JPG



PC070497.JPG



PC070498.JPG



PC070499.JPG



PC070500.JPG



PC080501.JPG



PC080502.JPG



PC080503.JPG



PC080504.JPG



PC080505.JPG



PC080506.JPG



PC080507.JPG



PC080508.JPG



PC080509.JPG



PC080510.JPG



PC080511.JPG



PC080512.JPG



PC080513.JPG



PC080514.JPG



PC080515.JPG



PC090516.JPG



PC090517.JPG



PC090518.JPG



PC090519.JPG



PC090520.JPG



PC090521.JPG



PC090522.JPG



PC090523.JPG



PC090524.JPG



PC090525.JPG



PC090526.JPG



PC090527.JPG



PC090528.JPG



PC090529.JPG



PC090530.JPG



PC090531.JPG



PC090532.JPG



PC090533.JPG



PC090534.JPG



PC090535.JPG



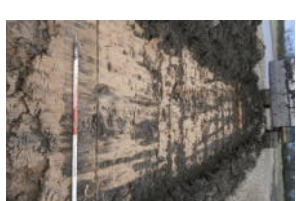
PC090536.JPG



PC090537.JPG



PC090538.JPG



PC090539.JPG



PC090540.JPG



PC090541.JPG



PC090542.JPG



PC090543.JPG



PC100544.JPG



PC100545.JPG



PC100546.JPG



PC100547.JPG



PC100548.JPG



PC100549.JPG



PC100550.JPG



PC100551.JPG



PC100552.JPG



PC100553.JPG



PC100554.JPG



PC100555.JPG



PC100556.JPG



PC100557.JPG



PC100558.JPG



DSC_2928.JPG



DSC_2929.JPG



DSC_2930.JPG



DSC_2931.JPG



DSC_2932.JPG



DSC_2933.JPG



DSC_2934.JPG



DSC_2935.JPG



DSC_2936.JPG



DSC_2937.JPG



DSC_2938.JPG



DSC_2939.JPG



DSC_2940.JPG



DSC_2941.JPG



DSC_2942.JPG



DSC_2943.JPG



DSC_2944.JPG



DSC_2945.JPG



DSC_2946.JPG



DSC_2947.JPG



DSC_2948.JPG



DSC_2949.JPG



DSC_2950.JPG



DSC_2951.JPG



DSC_2952.JPG



DSC_2953.JPG



DSC_2954.JPG



DSC_2955.JPG



DSC_2956.JPG



DSC_2957.JPG



DSC_2958.JPG



DSC_2959.JPG



DSC_2960.JPG



DSC_2961.JPG



DSC_2962.JPG



DSC_2963.JPG



DSC_2964.JPG



DSC_2965.JPG



DSC_2966.JPG



DSC_2967.JPG



DSC_2968.JPG



DSC_2969.JPG



DSC_2970.JPG



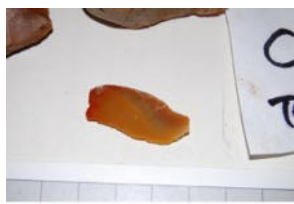
DSC_2971.JPG



DSC_2972.JPG



DSC_2973.JPG



DSC_2974.JPG



DSC_2975.JPG



DSC_2976.JPG



DSC_2977.JPG



DSC_2978.JPG



DSC_2979.JPG



DSC_2980.JPG



DSC_2981.JPG



DSC_2982.JPG



DSC_2983.JPG



DSC_2984.JPG



DSC_2985.JPG



DSC_2986.JPG



DSC_2987.JPG



DSC_2988.JPG



DSC_2989.JPG



DSC_2990.JPG



DSC_2991.JPG



DSC_2992.JPG



DSC_2993.JPG



DSC_2994.JPG



DSC_2995.JPG



DSC_2996.JPG



DSC_2997.JPG



DSC_2998.JPG



DSC_2999.JPG



DSC_3000.JPG



DSC_3001.JPG



DSC_3002.JPG



DSC_3003.JPG



DSC_3004.JPG



DSC_3005.JPG



DSC_3006.JPG



DSC_3007.JPG



DSC_3008.JPG



DSC_3009.JPG



DSC_3068.JPG



DSC_3069.JPG



DSC_3070.JPG



DSC_3071.JPG



DSC_3072.JPG



DSC_3073.JPG



DSC_3074.JPG



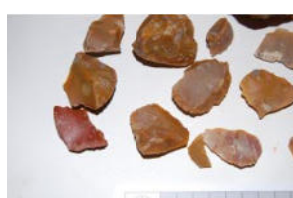
DSC_3075.JPG



DSC_3076.JPG



DSC_3077.JPG



DSC_3078.JPG



DSC_3079.JPG



DSC_3080.JPG



DSC_3081.JPG



DSC_3082.JPG



DSC_3083.JPG



DSC_3084.JPG



DSC_3085.JPG



DSC_3086.JPG



DSC_3087.JPG



DSC_3088.JPG



DSC_3089.JPG



DSC_3090.JPG



DSC_3091.JPG



DSC_3092.JPG



DSC_3093.JPG



DSC_3094.JPG



DSC_3095.JPG



DSC_3096.JPG



DSC_3097.JPG



DSC_3098.JPG



DSC_3099.JPG



DSC_3100.JPG