

Findrack House, Midmar, Aberdeenshire, AB31 4LJ
Replacement of SSE electricity pole
Report on watching brief



Alison Cameron
Cameron Archaeology
14 July 2016

CONTENTS

1	INTRODUCTION	3
2	BACKGROUND	4
3	THE WATCHING BRIEF	4
4	CONCLUSIONS AND RECOMMENDATIONS.....	7
5	ACKNOWLEDGEMENTS	7
	APPENDIX 1 MAPS.....	8
	APPENDIX 2 PHOTOGRAPHS	10

ILLUSTRATIONS

Cover: top: end of drystone dyke with pole to be replaced (centre); bottom: excavated trench with pole removed.

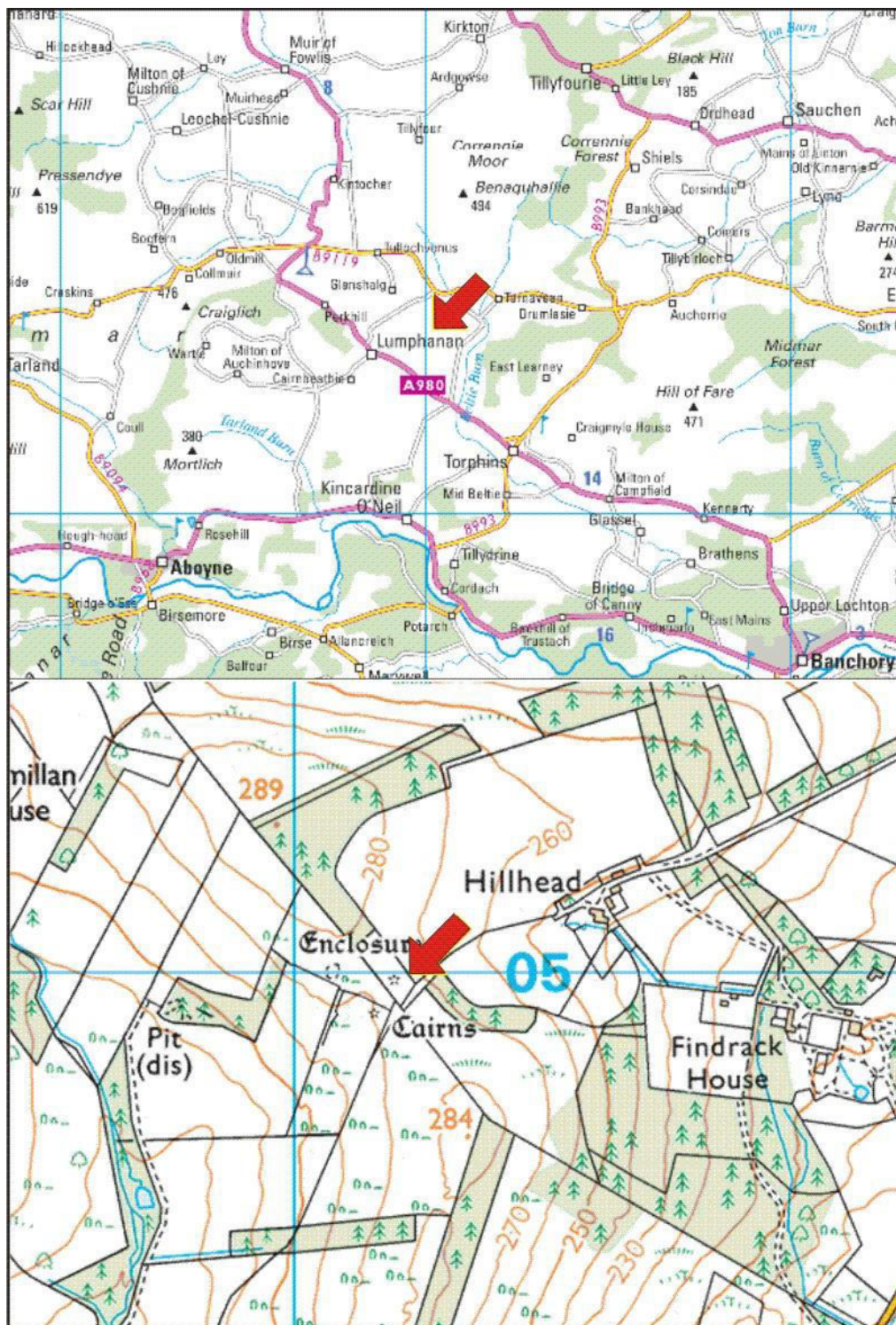
Illus 1	Location plan (Contains Ordnance Survey data © Crown copyright and database right 2016)	3
Illus 2	Plan showing location of Aberdeenshire HER recorded features and cairns recorded during this watching brief (copyright RCAHMS).....	4
Illus 3	F1 NJ60125 05025 with pole to be replaced (left of centre); facing S.....	5
Illus 4	F2 NJ60145 04988, Facing N	5
Illus 5	F3 NJ60159 05002, Facing N	6
Illus 6	One of many tree stumps, very rotten, from trees seen on OS maps	6
Illus 7	First Edition Ordnance Survey map (copyright National Library of Scotland) Aberdeen Sheet LXXII.13 (Lumphanan) Survey date: 1865 Publication date: 1869	8
Illus 8	Second Edition Ordnance Survey map (copyright National Library of Scotland) Aberdeenshire 072.13 (includes: Kincardine O'Neil; Lumphanan) Publication date: 1900 Revised: 1899	9
Illus 9	Google map showing replaced pole (x) and cairns arrowed (copyright Google)	10

SUMMARY

A watching brief was carried out on 6 July 2016 during the replacement of pole P17 west of Findrack House. The pole was located at the S end of a drystone dyke which had been increased in size with field clearance on all sides (cover). The post was recorded prior to removal and a watching brief carried out during the removal of stones from the dyke by JCB and trench excavated for removal of old pole and replacement with new one. No archaeological finds or features were recorded during this work. Two cairns recorded on the HER as NJ60SW0025 and a possible enclosure or remains of a cairn (similar in description to NJ60SW0011 a ring enclosure or cremation cemetery recorded on the field to the west) were photographed.

1 INTRODUCTION

- 1.1 The site (Illus 1) is located on the W side of Findrack House. It is centred on NGR NJ60180499, at 270-280m OD (Illus 1) and in the parish of Lumphanan.
- 1.2 The work was commissioned by Ivan Williamson, SSE. Aberdeenshire Council Archaeology Service require a watching brief during the replacement of pole P17.
- 1.3 All the archaeological work was carried out in the context of Scottish Planning Policy (SPP) Planning Advice Note (PAN 2/2011) and Scottish Historic Environment Policy (SHEP), which state that archaeological remains should be regarded as part of the environment to be protected and managed.



Illus 1 Location plan (Contains Ordnance Survey data © Crown copyright and database right 2016)

2 BACKGROUND

2.1 There are cairns and an enclosure in the fields to the west of the pole replacement. NJ60SW0025 is a well-shaped, turf-covered cairn, c.62m NNE of cairn NJ60SW0002. It does not appear to have been opened. About 20m to the SW (at NJ 6014 0498) is a mutilated mound, possibly a cairn but too amorphous to allow positive classification.

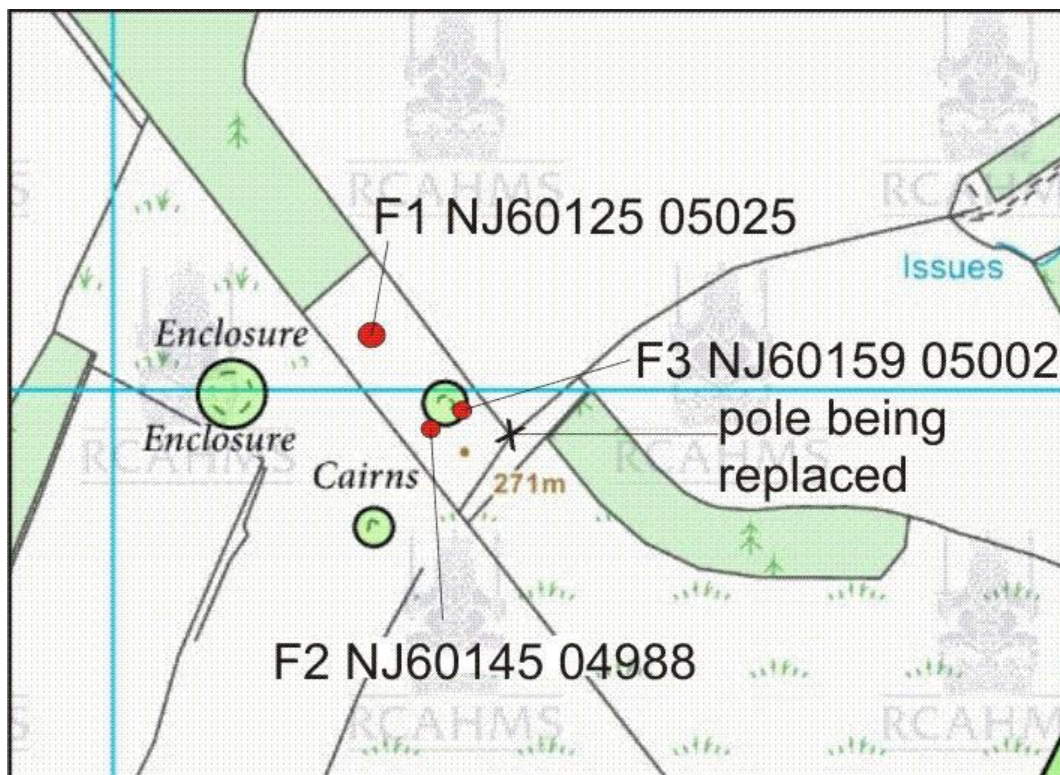
2.2 NJ60SW0002 is the remains of a cairn of rubble stones. Upon excavation, a cist was found containing a 'carved urn', bones and ashes. The condition of the cairn and lack of turf-covering suggests that it was probably re-built after excavation.

2.3 NJ60SW0011 is the remains of a ring enclosure or possible cremation cemetery, defined by a turf and whin-covered bank of earth and stones. Protruding through this stony bank at fairly regular intervals of c.4-5m there are large boulders up to 0.6m high; no trace of an entrance.

3 THE WATCHING BRIEF

3.1 A watching brief was carried out on 6 July 2016 during the replacement of pole P17 west of Findrack House. The pole was located at the S end of a drystone dyke which had been increased in size with field clearance on all sides (cover). The post was recorded prior to removal and a watching brief carried out during the removal of stones from the dyke by JCB and trench excavated for removal of old pole and replacement with new one. No archaeological finds or features were recorded during this work.

3.2 Two cairns and a possible ring cairn or enclosure were recorded in the field immediately to the W of the dyke in which the pole was being replaced. These are in an area previously tree covered on the 1st and 2nd Edition OS maps (Illus 7-8). Well-rotted tree stumps can be seen throughout the field (Illus 6).



Illus 2 Plan showing location of Aberdeenshire HER recorded features and cairns recorded during this watching brief (copyright RCAHMS)

3.3 F1 the enclosure is at NJ60125 05025 and is 5m diameter interior with low bank 2m wide particularly visible around E and N edges (Illus 3). Unrecorded on the HER.



Illus 3 F1 NJ60125 05025 with pole to be replaced (left of centre); facing S

3.4 F2 is a cairn at NJ60145 04988 is a mutilated cairn with stone kerbing 3.5m diameter 0.3m high (Illus 4). Recorded on HER as NJ60SW0025.



Illus 4 F2 NJ60145 04988, Facing N

3.5 F3 is a cairn NJ60159 05002 is a turf covered cairn 4m diameter and 0.4m high (Illus 5). Recorded on HER as NJ60SW0025.



Illus 5 F3 NJ60159 05002, Facing N



Illus 6 One of many tree stumps, very rotten, from trees seen on OS maps

4 CONCLUSIONS AND RECOMMENDATIONS

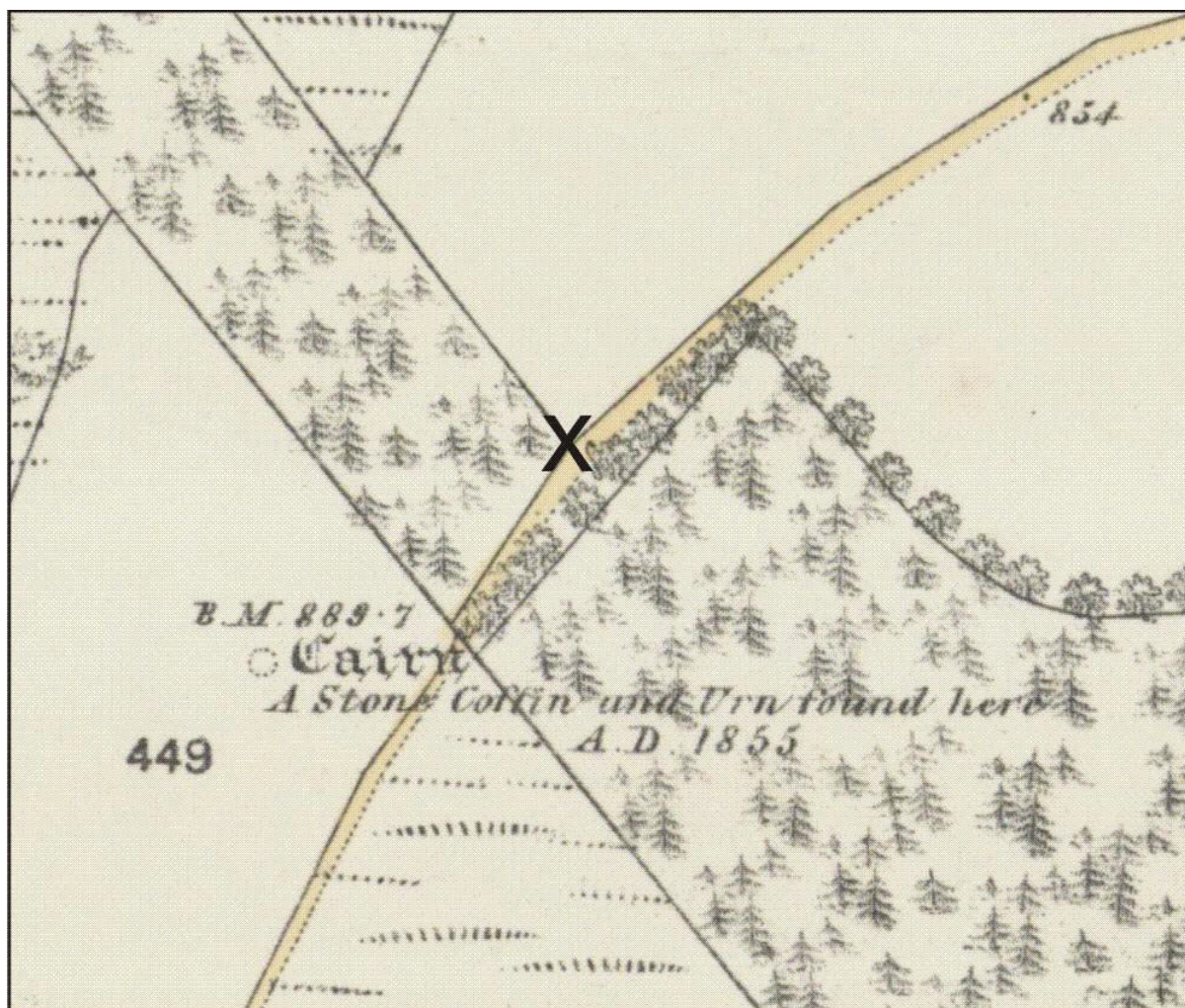
A watching brief was carried out on 6 July 2016 during the replacement of pole P17 west of Findrack House. The pole was located at the S end of a drystone dyke which had been increased in size with field clearance on all sides (cover). The post was recorded prior to removal and a watching brief carried out during the removal of stones from the dyke by JCB and trench excavated for removal of old pole and replacement with new one. No archaeological finds or features were recorded during this work. Two cairns recorded on the HER as NJ60SW0025 and a possible enclosure or remains of a cairn (similar in description to NJ60SW0011 a ring enclosure or cremation cemetery recorded on the field to the west) were photographed.

5 ACKNOWLEDGEMENTS

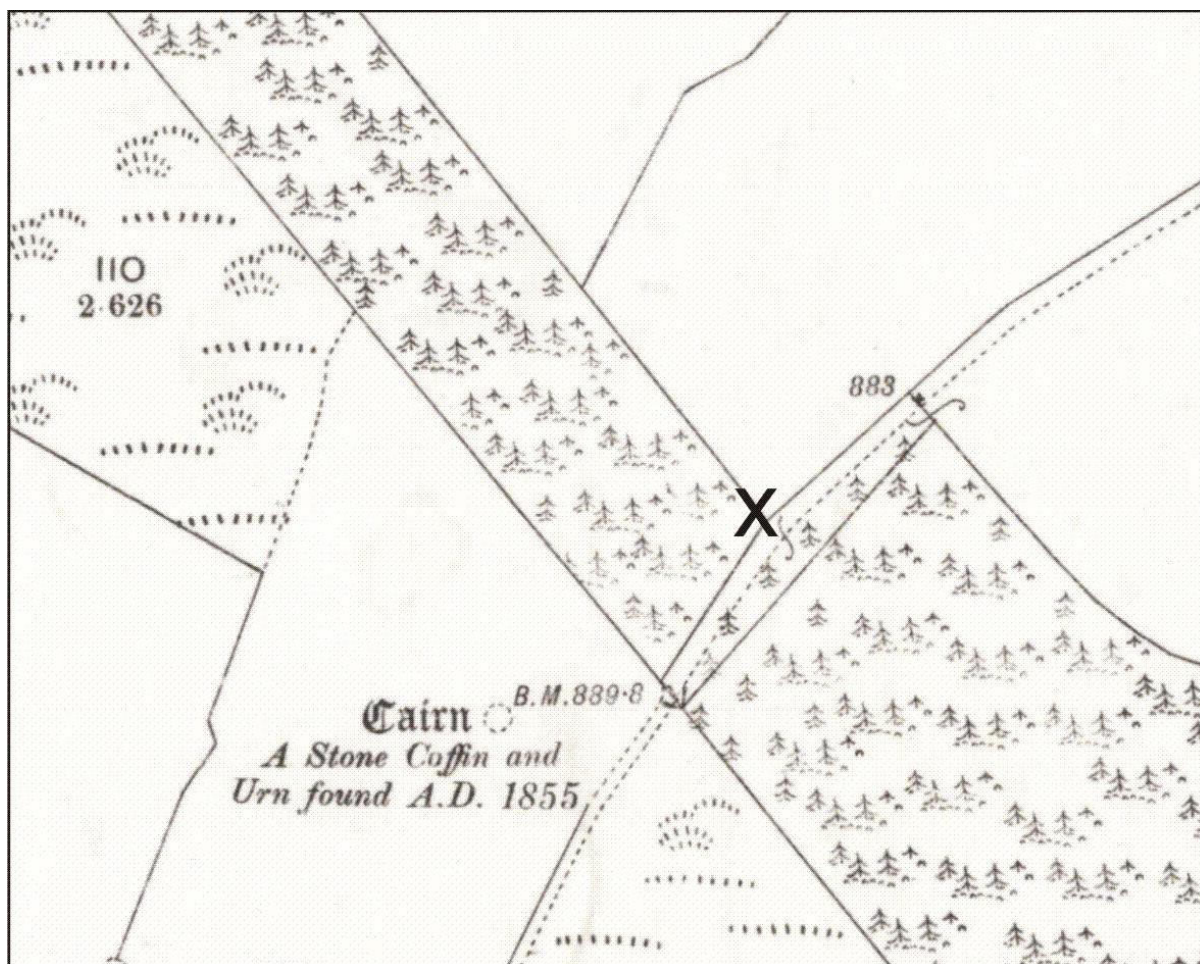
Thanks to Ivan Williamson, SSE for commissioning this project, to Ben Armitage on site and to Bruce Mann and Caroline Palmer, Aberdeenshire Council Archaeology Service, Archaeology Service for Aberdeenshire, Moray, Angus, and Aberdeen City Councils, for their advice during the work.

Cameron Archaeology
45 View Terrace
Aberdeen
AB25 2RS
01224 643020
07581 181057
cameronarch@btinternet.com
www.cameronarchaeology.com
Company registration no 372223 (Scotland)
VAT registration no 990 4373 00

APPENDIX 1 MAPS



Illus 7 First Edition Ordnance Survey map (copyright National Library of Scotland)
Aberdeen Sheet LXXII.13 (Lumphanan) Survey date: 1865 Publication date: 1869



Illus 8 Second Edition Ordnance Survey map (copyright National Library of Scotland)
 Aberdeenshire 072.13 (includes: Kincardine O'Neil; Lumphanan) Publication date:
 1900 Revised: 1899



Illus 9 Google map showing replaced pole (x) and cairns arrowed (copyright Google)

APPENDIX 2 PHOTOGRAPHS

Photo no	Description	Facing
DSC_2063-4	Drystone dyke with pole to be replaced	NNW
DSC_2065-6	Drystone dyke with pole to be replaced	NNW
DSC_2067	Drystone dyke with pole to be replaced	N
DSC_2068-73	Drystone dyke with pole to be replaced	E
DSC_2074-5	Drystone dyke with pole to be replaced with bank remains of field boundary at S edge of field	E
DSC_2076-7	Drystone dyke with pole to be replaced showing bank at S edge of field and N edge of field to the S	S
DSC_2078		W
DSC_2079	Field to W of pole to be replaced with 2 cairns and enclosure	N
DSC_2080-1	Replacement pole	ESE
DSC_2082-3	NJ6015905002 cairn	N
DSC_2084	NJ6015905002 cairn	N
DSC_2085	NJ6015905002 cairn	N
DSC_2086-7	NJ6015905002 cairn	N

DSC_2088-90	NJ6015905002 cairn	SE
DSC_2091	NJ6015905002 cairn	S
DSC_2092	NJ6015905002 cairn	SE
DSC_2093-4	NJ6014504988 cairn	NW
DSC_2095	NJ6014504988 cairn	N
DSC_2096-8	NJ6014504988 cairn	N
DSC_2099-2100	Large earthfast between cairns	N/S
DSC_2101	NJ6012505025 enclosure	NW
DSC_2102	NJ6012505025 enclosure	N
DSC_2103	NJ6012505025 enclosure	NNW
DSC_2104	NJ6012505025 enclosure	SSW
DSC_2105	NJ6012505025 enclosure	S
DSC_2106-7	NJ6012505025 enclosure	S
DSC_2108	NJ6012505025 enclosure	NE
DSC_2109	NJ6012505025 enclosure	E
DSC_2110	NJ6012505025 enclosure	E
DSC_2111	NJ6012505025 enclosure	NE
DSC_2112	NJ6012505025 enclosure	N
DSC_2113	NJ6012505025 enclosure	NW
DSC_2114	NJ6012505025 enclosure	N
DSC_2115	NJ6012505025 enclosure	NE
DSC_2116	NJ6012505025 enclosure	S
DSC_2117	NJ6012505025 enclosure	N
DSC_2118	NJ6012505025 enclosure	NW
DSC_2119	NJ6012505025 enclosure	N
DSC_2120-2	NJ6012505025 enclosure	W/E/N
DSC_2123	NJ6012505025 enclosure	NW
DSC_2124-37	Hole for removal of pole and replacement	N/NNW



DSC_2063.JPG



DSC_2064.JPG



DSC_2065.JPG



DSC_2066.JPG



DSC_2067.JPG



DSC_2068.JPG



DSC_2069.JPG



DSC_2070.JPG



DSC_2071.JPG



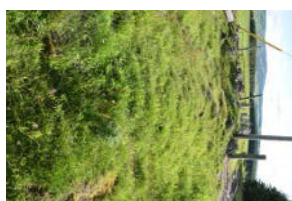
DSC_2072.JPG



DSC_2073.JPG



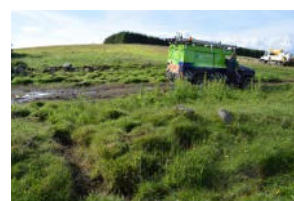
DSC_2074.JPG



DSC_2075.JPG



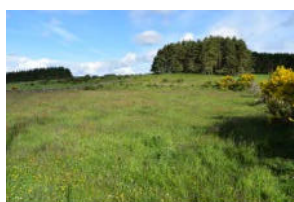
DSC_2076.JPG



DSC_2077.JPG



DSC_2078.JPG



DSC_2079.JPG



DSC_2080.JPG



DSC_2081.JPG



DSC_2082.JPG



DSC_2083.JPG



DSC_2084.JPG



DSC_2085.JPG



DSC_2086.JPG



DSC_2087.JPG



DSC_2088.JPG



DSC_2089.JPG



DSC_2090.JPG



DSC_2091.JPG



DSC_2092.JPG



DSC_2093.JPG



DSC_2094.JPG



DSC_2095.JPG



DSC_2096.JPG



DSC_2097.JPG



DSC_2098.JPG



DSC_2099.JPG



DSC_2100.JPG



DSC_2101.JPG



DSC_2102.JPG



DSC_2103.JPG



DSC_2104.JPG



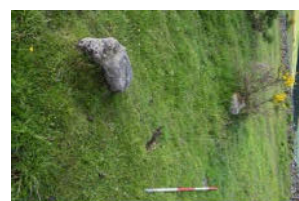
DSC_2105.JPG



DSC_2106.JPG



DSC_2107.JPG



DSC_2108.JPG



DSC_2109.JPG



DSC_2110.JPG



DSC_2111.JPG



DSC_2112.JPG



DSC_2113.JPG



DSC_2114.JPG



DSC_2115.JPG



DSC_2116.JPG



DSC_2117.JPG



DSC_2118.JPG



DSC_2119.JPG



DSC_2120.JPG



DSC_2121.JPG



DSC_2122.JPG



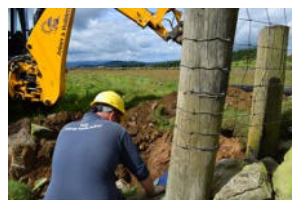
DSC_2123.JPG



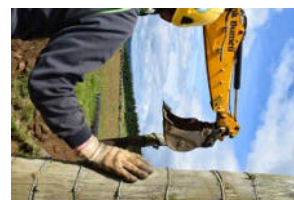
DSC_2124.JPG



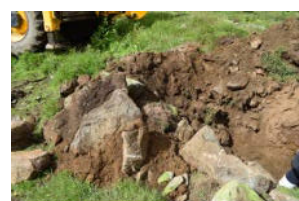
DSC_2125.JPG



DSC_2126.JPG



DSC_2127.JPG



DSC_2128.JPG



DSC_2129.JPG



DSC_2130.JPG



DSC_2131.JPG



DSC_2132.JPG



DSC_2133.JPG



DSC_2134.JPG



DSC_2135.JPG



DSC_2136.JPG



DSC_2137.JPG