

Land to South of Boothby Road, Fraserburgh

Data Structure Report



Alison Cameron
Cameron Archaeology Ltd
17 February 2017

CONTENTS

1	BACKGROUND	3
2	ARCHAEOLOGICAL BACKGROUND	4
3	THE ARCHAEOLOGICAL WALKOVER AND EVALUATION	5
4	REFERENCES.....	6
5	ACKNOWLEDGEMENTS	6
	APPENDIX 1 MAPS.....	7
	APPENDIX 2 PHOTOGRAPHS	14

ILLUSTRATIONS

Cover: Trench 13 showing plough scores in natural subsoil; facing N

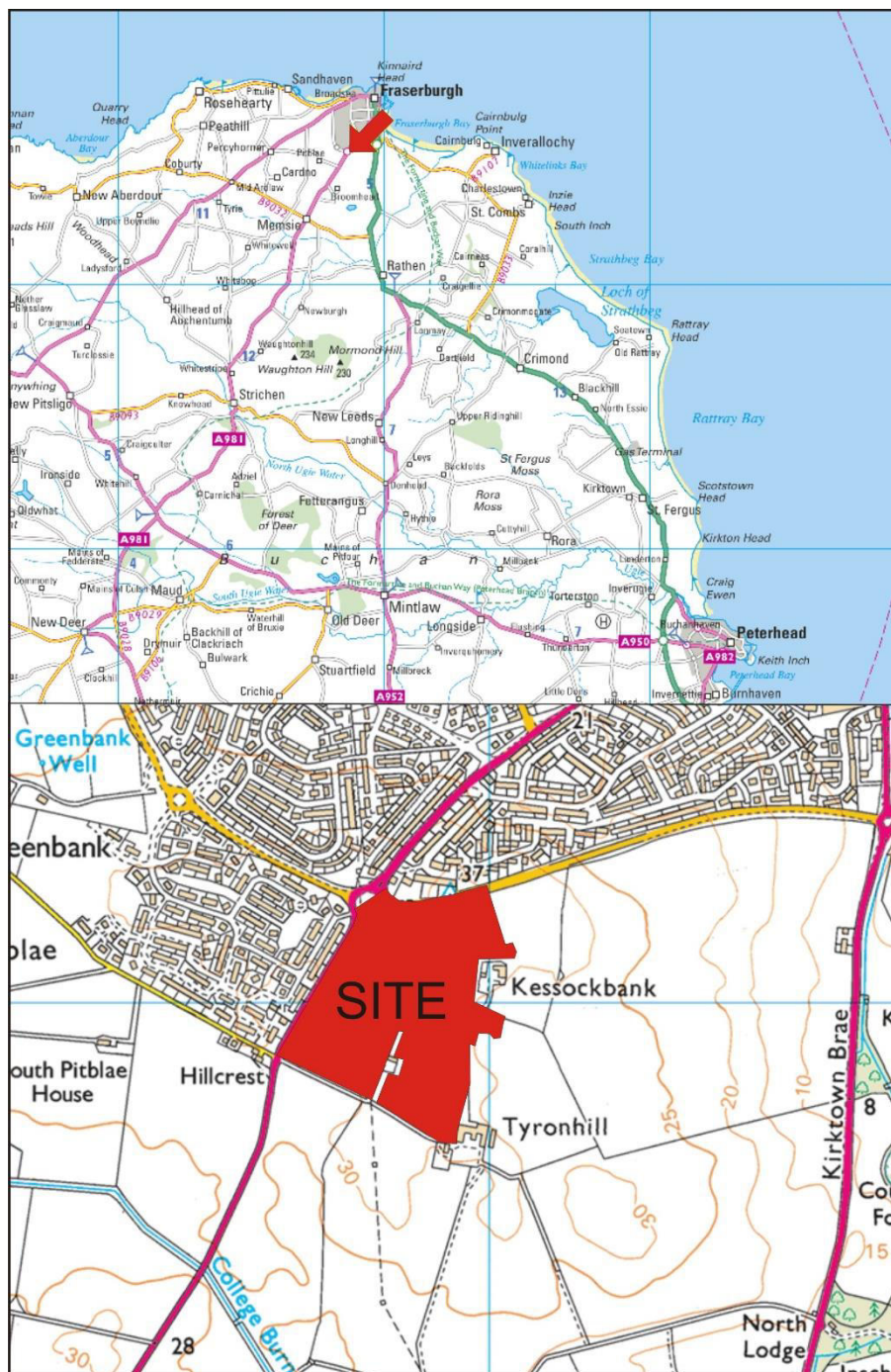
Illus 1	Location plan	3
Illus 2	Plan showing evaluation trenches and areas of walkover	5
Illus 3	Pont's map of Buchan c 1583-96 showing the approximate area of the proposed development (copyright National Library of Scotland).....	7
Illus 4	Gordon's map of Banff 1640 showing the approximate area of the proposed development (copyright National Library of Scotland).....	7
Illus 5	Blaeu's map of Banff 1654 showing the approximate area of the proposed development (copyright National Library of Scotland).....	8
Illus 6	Moll's map of Banff 1745 showing the approximate area of the proposed development (copyright National Library of Scotland).....	8
Illus 7	Robertson's map of Aberdeen, Kincardine and Banff 1822	9
Illus 8	Roy's Military Survey of Scotland 1747-55.....	9
Illus 9	Thomson's map of Northern Part of Aberdeen and Banff shires 1826 showing the approximate area of the proposed development.....	10
Illus 10	Gibb's map of Aberdeenshire 1858 showing the approximate area of the proposed development (copyright National Library of Scotland).....	10
Illus 11	First Edition OS map showing site outline in red.....	11
Illus 12	Second Edition OS map showing site outline in red.....	12
Illus 13	Third Edition OS map showing site outline in red.....	13
Illus 14	1973 aerial photograph	14

SUMMARY

A walkover was carried out on 2 February 2017 on the areas of the site which had already been topsoil stripped prior to the WSI being written. A 5% archaeological evaluation was then carried out from 15-16th February 2017. Eighteen trenches were excavated using a tracked machine with a 2m ditching bucket. The subsoil was rusty brown sand and gravel and the topsoil is generally 0.2-0.3m deep heavy grey clayey loam. There were plough scars in the natural subsoil of Trenches 1-6 and Trenches 13-18 and at the west and east ends of Trenches 7-12. The centre of Trenches 7-12 was up to 1m deep where a palaeochannel ran N-S through the site. No archaeological features were recorded and no finds except one fragment of unworked beach flint recovered from the surface of the field next to Trench 16.

1 BACKGROUND

- 1.1 The site (Illus 1) is located on the S of Fraserburgh between the A90 and the A981. It is centred on NGR NJ98853 65037, at 25-32m OD in the parish of Fraserburgh.
- 1.2 The work was commissioned by Gary Purves, Colaren Homes. An Aberdeenshire Council planning application APP/2016/0618 for erection of 120 dwellinghouses, provision of land for future affordable housing and associated landscaping and infrastructure was passed on 14 December 2016 with a standard archaeology condition (condition 3). A 5-7% archaeological evaluation is required.
- 1.3 All the archaeological work was carried out in the context of Scottish Planning Policy (SPP) Planning Advice Note (PAN 2/2011) and Historic Environment Scotland's Policy Statement (HESPS) which state that archaeological remains should be regarded as part of the environment to be protected and managed.



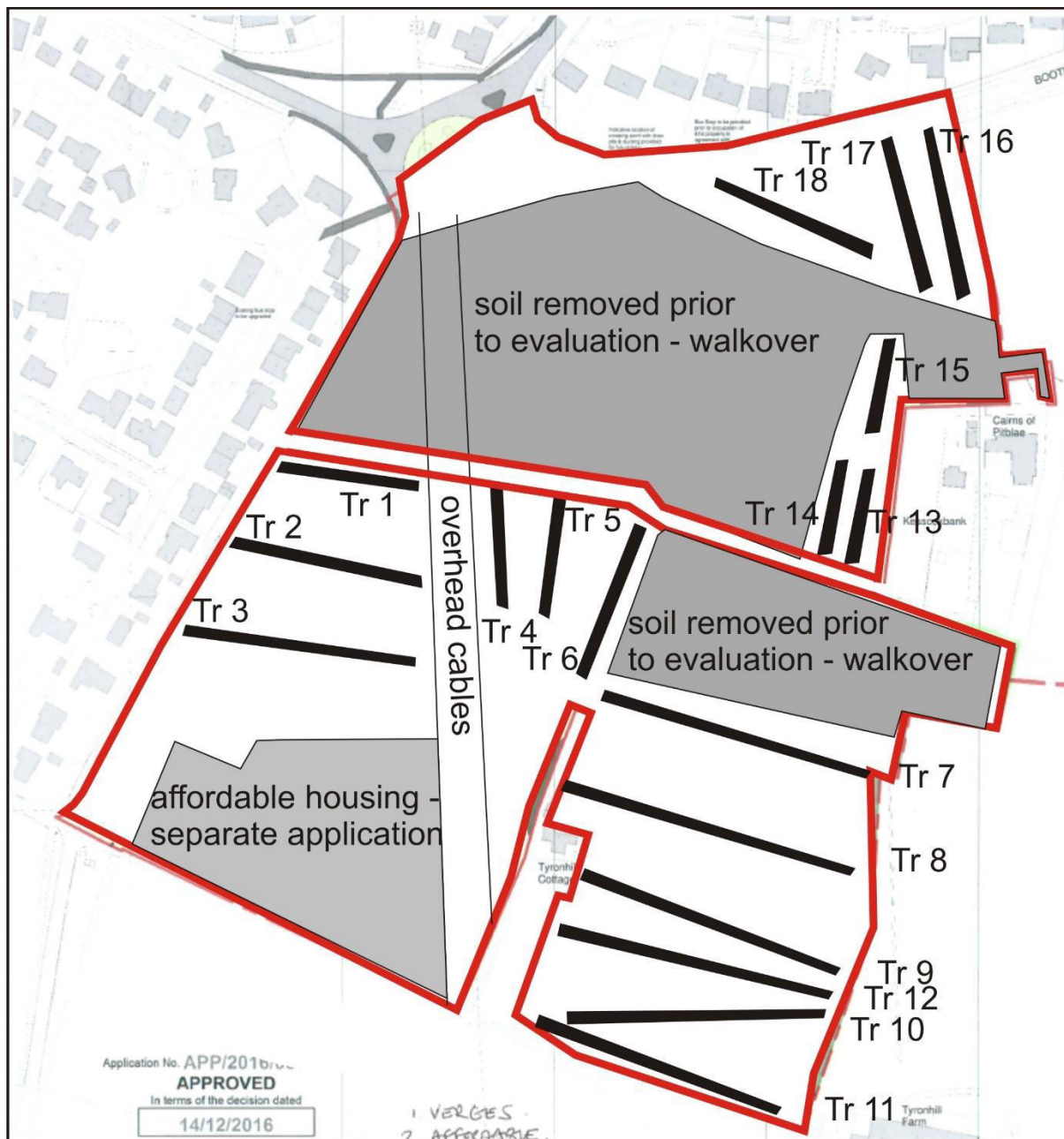
Illus 1 Location plan (Contains Ordnance Survey data © Crown copyright and database right 2017)

2 ARCHAEOLOGICAL BACKGROUND

- 2.1 There are no Scheduled Monuments within 1km this development area and there are no known sites within it.
- 2.2 A mound which was sited at the north edge of the development, Cairn Hill, HER NJ96NE0031 (NHRE NJ96NE23) was small hill feature but there is no trace of any antiquity. (OSNB, 33, 54).
- 2.3 Pitblae motte (NJ96NE0030) Possible motte; a small hill feature used as a landmark by vessels approaching Fraserburgh harbour. OS (1967) found no trace of any antiquity.
- 2.4 South Middleburgh, Fraserburgh tollhouse (NJ96NE0016) Tollhouse built in the early 19th century. A single storey, pinned rubble building with semi-octagonal end. Canted end to road with big chimney and windows on the splays. Piend roof and later porch. Stands on the SE side of the A981 public road, on the southern outskirts of Fraserburgh (Hume 1977, 99).
- 2.5 700m south of the proposed development is the College of Broomhead (NJ96SE0003), the site of college which stood on the croft of the same name; it was traceable in the early part of the 19th century, but has been subsequently ploughed out. A Simpson recalls the remains of two chapels. One was probably a seminary of learning of considerable repute, as it is called a college; some monks from the Abbey of Deer resided there (Cowan and Easson 1976; Easson 1957; OSA 1791-9; Pratt 1858, 181).
- 2.6 Farmsteads in the area depicted on the First and Second OS maps include Cairns of Pitblae (NHRE NJ96NE 40), Tyronhill (NHRE NJ96NE 249), Pitblae (NJ96NE 70) and Greenbank (NJ96NE 39). Milton of Philorth (NHRE NJ96SE 37) was a smithy (period unassigned) depicted on the First Edition OS map.
- 2.7 There are several wells in the area depicted on the First and Second OS maps including College well (HER NJ96SE0023), Mourning Well (NJ96SE0022) and Greenbank well (NJ96NE0055).
- 2.8 Greenbank housing development (NJ96NE0060) was subjected to an archaeological evaluation carried out at this site by Cameron Archaeology in November 2010. It was carried out on a small area (40 x 10m) where topsoil remained undisturbed; the rest of the site had been stripped of topsoil earlier in the year and building had commenced. The remainder of the site was walked over to determine if any archaeological deposits were visible. No archaeological remains were identified and no finds recovered (Cameron 2010, 20).
- 2.9 There are no features of interest on the early maps (Illus 3-10) and the land appears to be fields. The First Edition OS map (Illus 11) shows the development area as parts of eight field with field boundaries. By the 2nd and 3rd Edition OS maps (Illus 12-13) the fields have been joined and there are six fields and a well in the centre of the site within one of the field boundaries. By 1973 two of the fields have been joined but no other features are visible (Illus 14).

3 THE ARCHAEOLOGICAL WALKOVER AND EVALUATION

A walkover was carried out on 2 February 2017 on the areas of the site which had already been topsoil stripped prior to the WSI being written. A 5% archaeological evaluation was then carried out from 15-16th February 2017. Eighteen trenches were excavated using a tracked machine with a 2m ditching bucket. The subsoil was rusty brown sand and gravel and the topsoil is generally 0.2-0.3m deep heavy grey clayey loam. There were plough scars in the natural subsoil of Trenches 1-6 and Trenches 13-18 and at the west and east ends of Trenches 7-12. The centre of Trenches 7-12 was up to 1m deep where a palaeochannel ran N-S through the site. There were also the remains of two shallow furrows running N-S through these trenches. No other archaeological features were recorded and no finds except one fragment of unworked beach flint recovered from the surface of the field next to Trench 16.



Illus 2 Plan showing evaluation trenches and areas of walkover (copyright Taylor Design Services).

4 REFERENCES

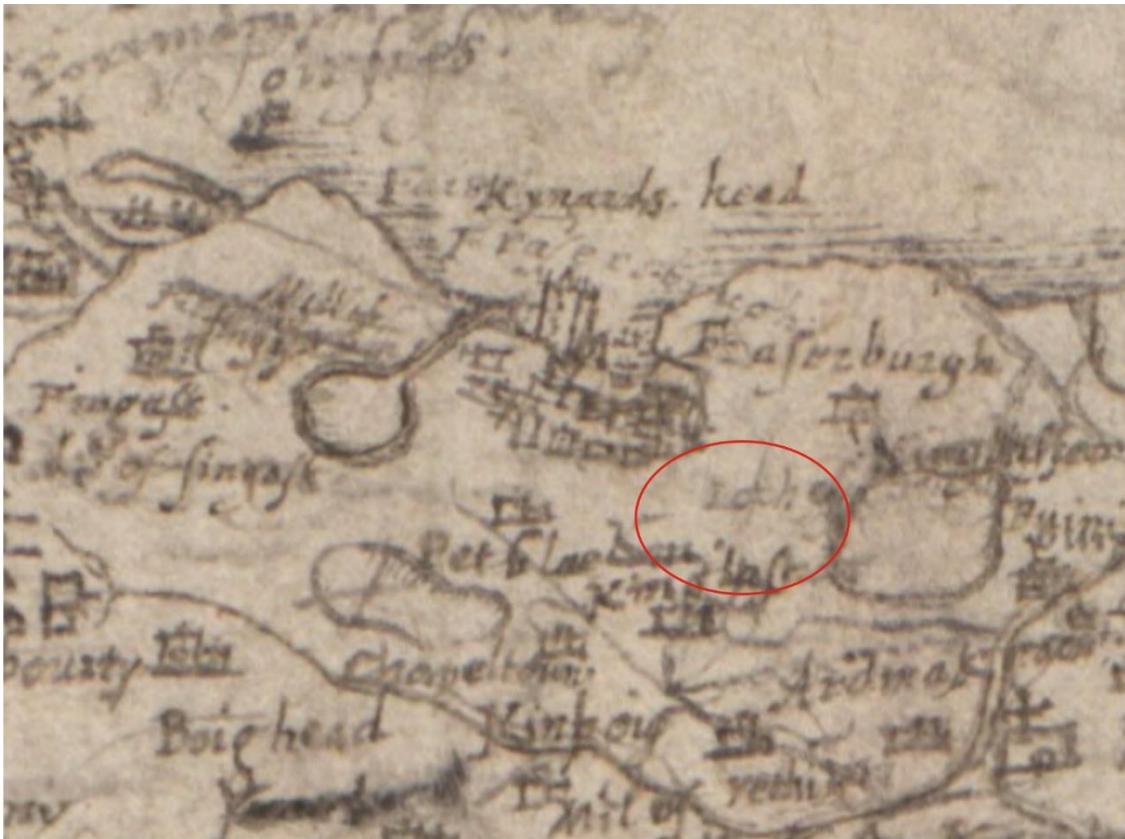
- Bogdan and Bryce, N and I B D.** 1991 *Castles, manors and 'town houses' survey*, *Discovery Excav Scot*, 1991, 25.
- Cameron, A.** 2010 *Greenbank, Fraserburgh, Aberdeenshire (Fraserburgh parish), evaluation*, *Discovery Excav Scot, New*, vol. 11, 2010. Cathedral Communications Limited, Wiltshire, England, 20.
- Cowan and Easson, I B and D E.** 1976 *Medieval religious houses in Scotland: with an appendix on the houses in the Isle of Man.* 2nd Edition. London.
- Easson, D E.** (1957a) *Medieval religious houses in Scotland: with an appendix on the houses in the Isle of Man.* London.
- Hume, J R.** 1977 *The industrial archaeology of Scotland, 2, the Highlands and Islands.* London.
- Ordnance Survey (Name Book.** *Object Name Books of the Ordnance Survey (6 inch and 1/2500 scale).* Page(s): Aberdeenshire, No.33, 54.
- OSA.** 1791-9 *The statistical account of Scotland, drawn up from the communications of the ministers of the different parishes*, in Sinclair, J Sir. Edinburgh, Vol.6, 9.
- Pratt, J B.** 1858 *Buchan.* 1st Edition. Aberdeen.

5 ACKNOWLEDGEMENTS

Thanks to Gary Purves, Colaren Homes for initiating this project and to Bruce Mann, Aberdeenshire Council Archaeology service for his advice during this work.

Cameron Archaeology
45 View Terrace
Aberdeen
AB25 2RS
01224 643020
07581 181057
cameronarch@btinternet.com
www.cameronarchaeology.com
Company registration no 372223 (Scotland)
VAT registration no 990 4373 00

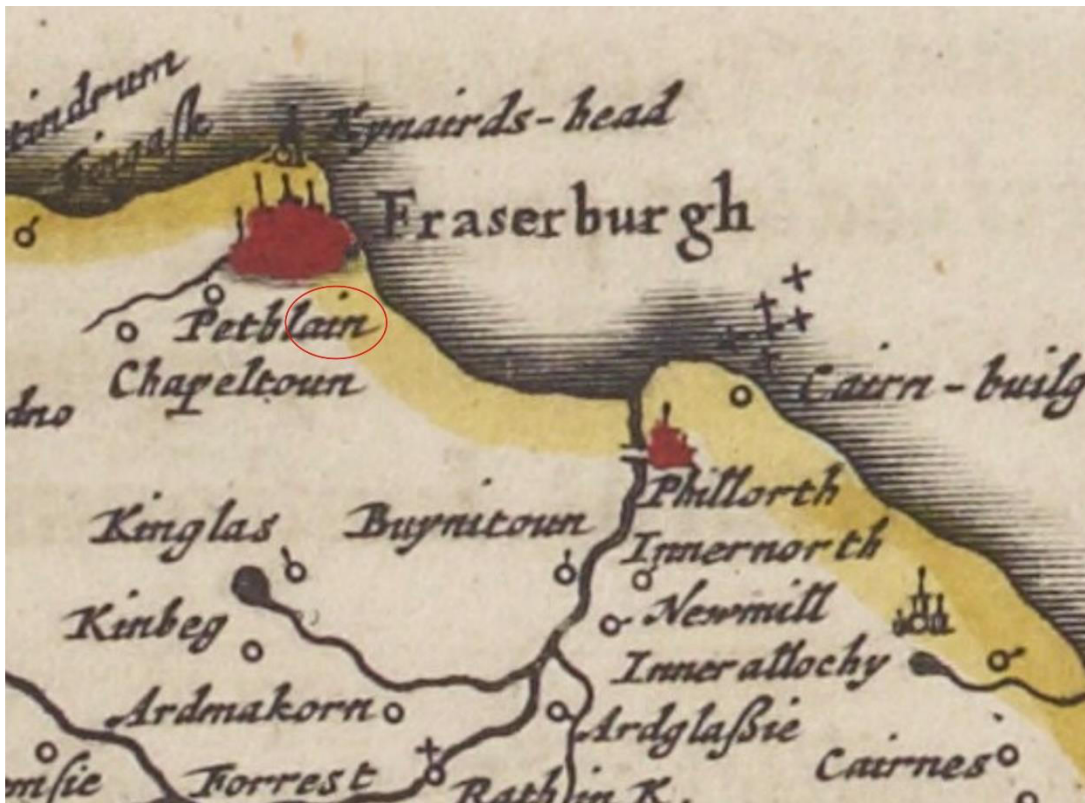
APPENDIX 1 MAPS



Illus 3 Pont's map of Buchan c 1583-96 showing the approximate area of the proposed development (copyright National Library of Scotland)



Illus 4 Gordon's map of Banff 1640 showing the approximate area of the proposed development (copyright National Library of Scotland)



Illus 5 Blaeu's map of Banff 1654 showing the approximate area of the proposed development (copyright National Library of Scotland)



Illus 6 Moll's map of Banff 1745 showing the approximate area of the proposed development (copyright National Library of Scotland)



Illus 7 Robertson's map of Aberdeen, Kincardine and Banff 1822 showing the approximate area of the proposed development (copyright National Library of Scotland)



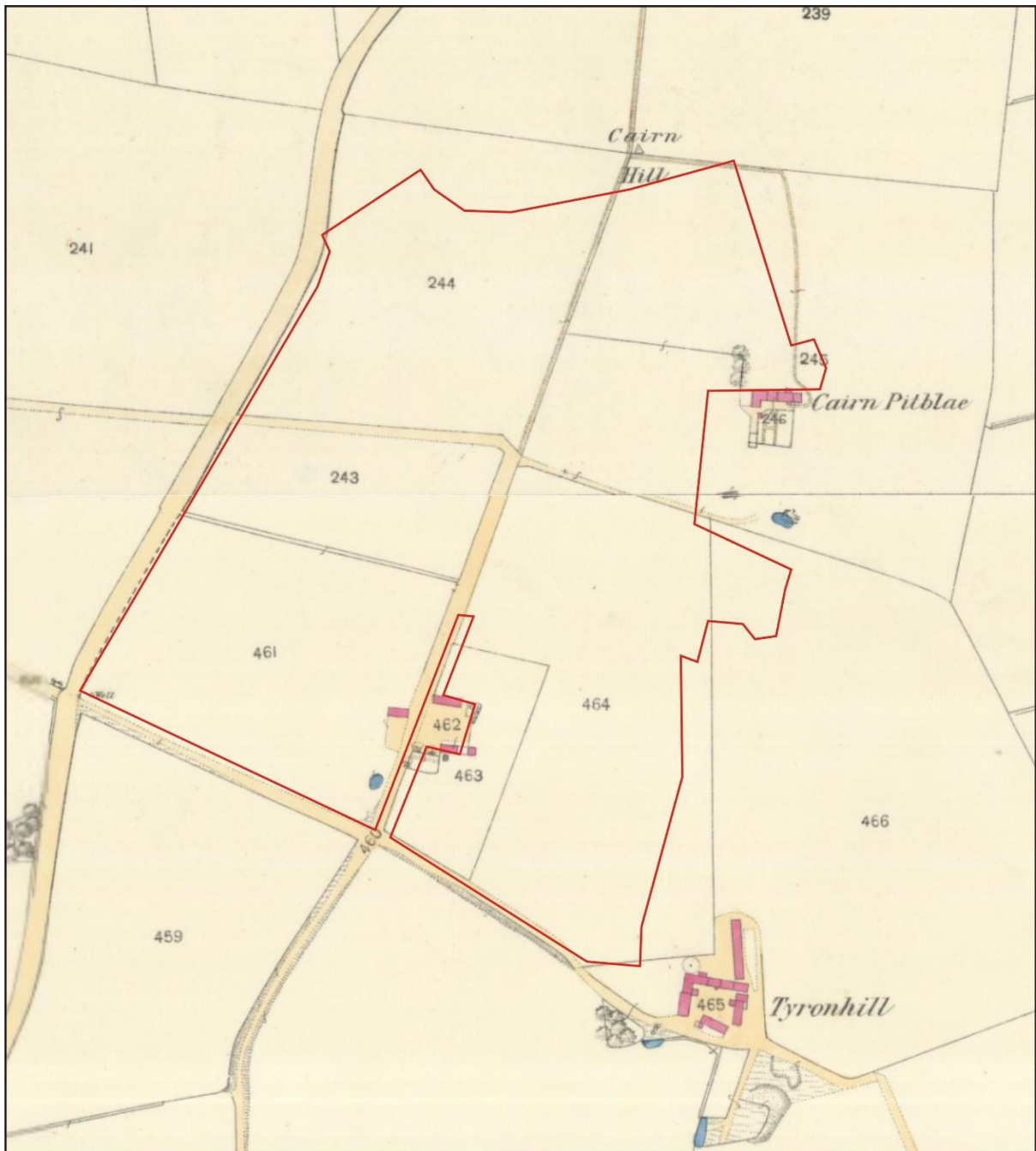
Illus 8 Roy's Military Survey of Scotland 1747-55 showing the approximate area of the proposed development (copyright National Library of Scotland)



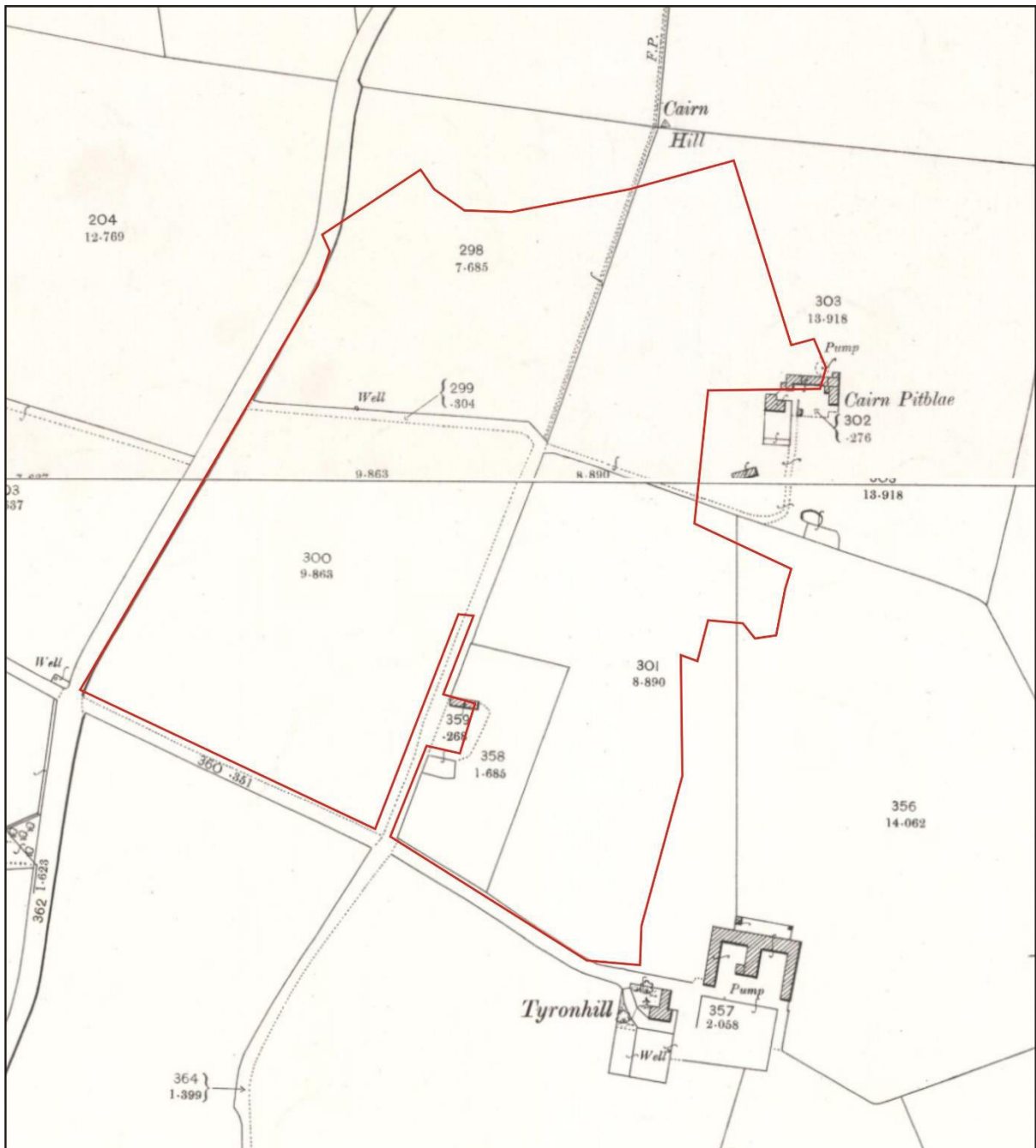
Illus 9 Thomson's map of Northern Part of Aberdeen and Banff shires 1826 showing the approximate area of the proposed development (copyright National Library of Scotland)



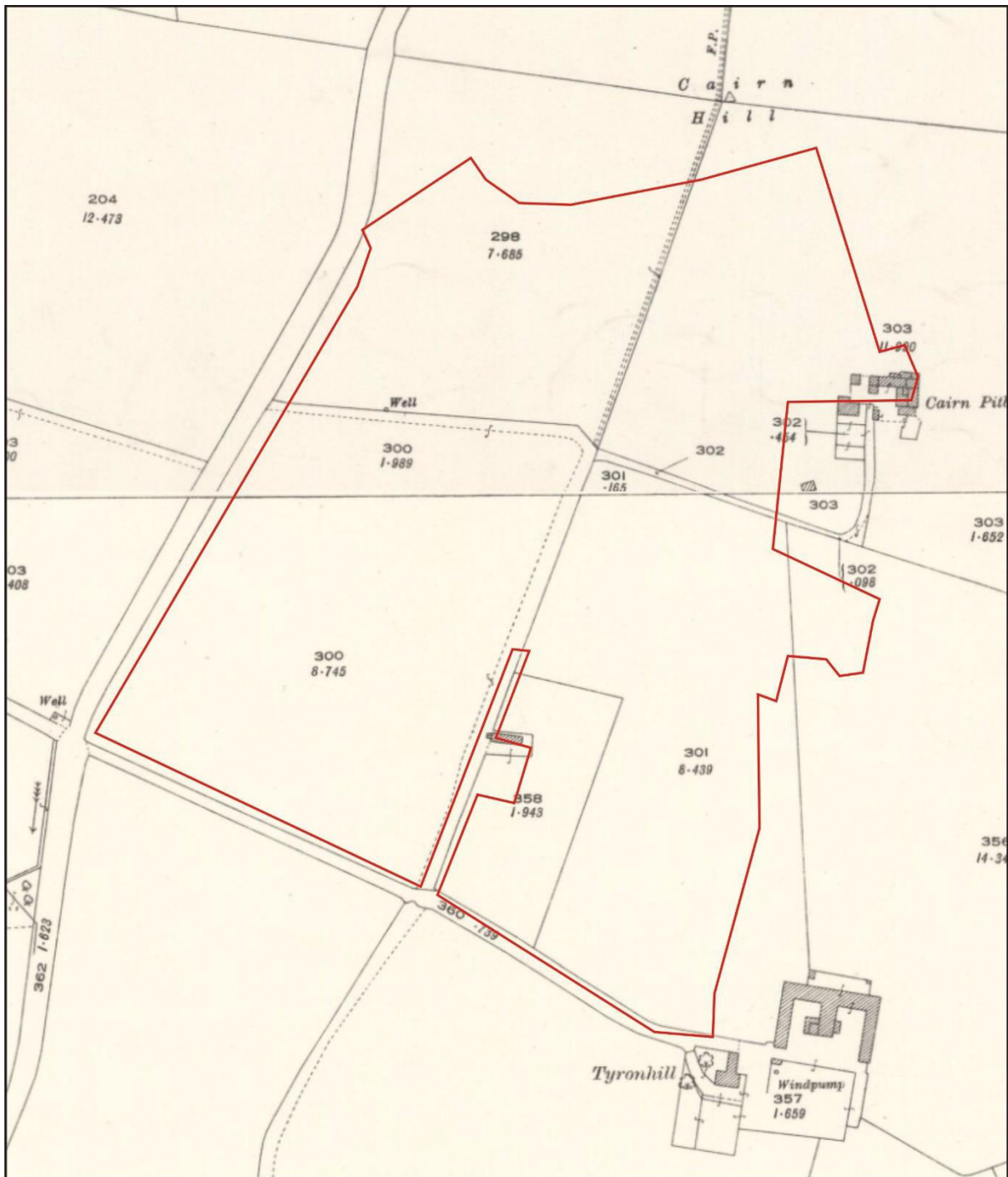
Illus 10 Gibb's map of Aberdeenshire 1858 showing the approximate area of the proposed development (copyright National Library of Scotland)



Illus 11 First Edition OS map showing site outline in red (copyright National Library of Scotland) Aberdeen Sheet III.5/9 (Fraserburgh) Survey date: 1869 Publication date: 1874



Illus 12 Second Edition OS map showing site outline in red (*copyright National Library of Scotland*) Aberdeenshire 003.05/9 (includes: Fraserburgh) Publication date: 1902 Revised: 1901



Illus 13 Third Edition OS map showing site outline in red (*copyright National Library of Scotland*) Aberdeenshire 003.05/9 (includes: Fraserburgh) Publication date: 1926 Revised: 1925 Levelled: 1901

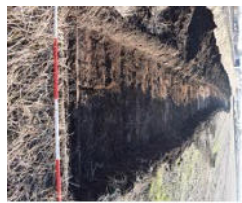


Illus 14 1973 aerial photograph showing approximate area of proposed development. NCAP-000-000-191-595 (copyright NCAP).

APPENDIX 2 PHOTOGRAPHS

Photo no	Description	Facing
DSC_6039-40	Tr 1	E
DSC_6041-2	Tr 2	E
DSC_6043-45	Tr 3	E
DSC_6046	Tr 3, 2, 1	N
DSC_6047	Tr 3	W
DSC_6048	Tr 2	W
DSC_6049	Tr 1	W
DSC_6050	Tr 1, 2, 3	SW
DSC_6051-2	Tr 4	S
DSC_6053-4	Tr 5	S
DSC_6055-7	Tr 6	S

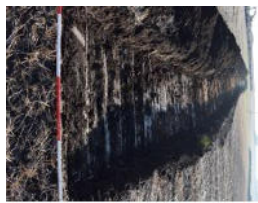
DSC_6059-60	Tr 6	N
DSC_6061-4	Tr 6, 5, 4	W
DSC_6067-70	Tr 7	E
DSC_6071	Tr 8 starting	S
DSC_6072-4	Tr 7 completed	W
DSC_6075-8	Flooding in areas previously stripped	
DSC_6079-80	Tr 8 east end	W
DSC_6081	Tr 7	NW
DSC_6082-87	Tr 8 possible furrows	W
DSC_6088-89	Tr 8 W end	E
DSC_6090-1	Tr 8, 7 in background	NE
DSC_6092-3	Tr 9 W end	E
DSC_6094-5	Tr 9 bottles and ceramic in stone hole and plough scars	E
DSC_6096-7	Tr 9 E end	W
DSC_6098-100	Tr 9 E end, Tr 8, Tr 7	NW/N
DSC_6101-2	Tr 10 E end	W
DSC_6103	Tr 10 W end	E
DSC_6104-5	Tr 11 W end	E
DSC_6107	Tr 11 E end	W
DSC_6108-12	Tr 12 E end	W
DSC_6113	Tr 7-9	NW
DSC_6114	Tr 11 E end	N
DSC_6115	Tr 12 W end	E
DSC_6116-18	Tr 13	N
DSC_6119-20	Tr 13 plough scores in natural subsoil	N
DSC_6125-26	Tr 13	S
DSC_6127	Tr 14	S
DSC_6128	Tr 13	SE
DSC_6129-31	Tr 14 completed	N
DSC_6132-33	Tr 15	N
DSC_6136-37	Tr 15 completed	S
DSC_6138-9	Tr 16	S
DSC_6140-42	Tr 16 completed	N
DSC_6143-44	Tr 17 N end	S
DSC_6145-46	Tr 16	SE/E
DSC_6147	Tr 17 completed	N
DSC_6148-51	Tr 18	SE
DSC_6152-3	Tr 18 completed	NW



DSC_6039.JPG



DSC_6040.JPG



DSC_6041.JPG



DSC_6042.JPG



DSC_6043.JPG



DSC_6044.JPG



DSC_6045.JPG



DSC_6046.JPG



DSC_6047.JPG



DSC_6048.JPG



DSC_6049.JPG



DSC_6050.JPG



DSC_6051.JPG



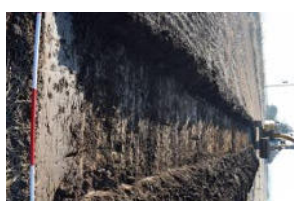
DSC_6052.JPG



DSC_6053.JPG



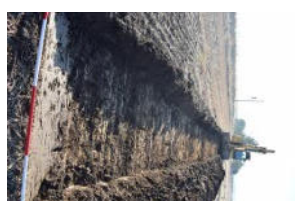
DSC_6054.JPG



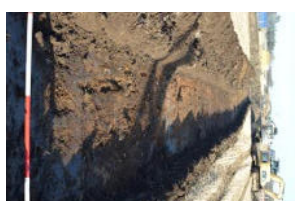
DSC_6055.JPG



DSC_6056.JPG



DSC_6057.JPG



DSC_6059.JPG



DSC_6060.JPG



DSC_6061.JPG



DSC_6062.JPG



DSC_6063.JPG



DSC_6064.JPG



DSC_6067.JPG



DSC_6068.JPG



DSC_6069.JPG



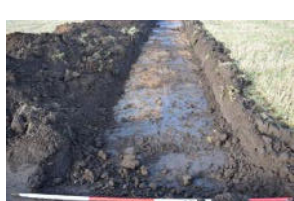
DSC_6070.JPG



DSC_6071.JPG



DSC_6072.JPG



DSC_6073.JPG



DSC_6074.JPG



DSC_6075.JPG



DSC_6076.JPG



DSC_6077.JPG



DSC_6078.JPG



DSC_6079.JPG



DSC_6080.JPG



DSC_6081.JPG



DSC_6082.JPG



DSC_6083.JPG



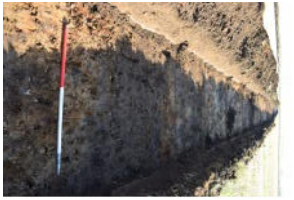
DSC_6084.JPG



DSC_6085.JPG



DSC_6086.JPG



DSC_6087.JPG



DSC_6088.JPG



DSC_6089.JPG



DSC_6090.JPG



DSC_6091.JPG



DSC_6092.JPG



DSC_6093.JPG



DSC_6094.JPG



DSC_6095.JPG



DSC_6096.JPG



DSC_6097.JPG



DSC_6098.JPG



DSC_6099.JPG



DSC_6100.JPG



DSC_6101.JPG



DSC_6102.JPG



DSC_6103.JPG



DSC_6104.JPG



DSC_6105.JPG



DSC_6107.JPG



DSC_6108.JPG



DSC_6109.JPG



DSC_6110.JPG



DSC_6111.JPG



DSC_6112.JPG



DSC_6113.JPG



DSC_6114.JPG



DSC_6115.JPG



DSC_6116.JPG



DSC_6117.JPG



DSC_6118.JPG



DSC_6119.JPG



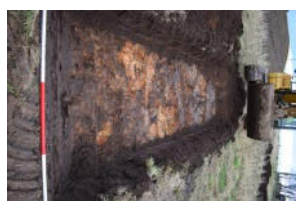
DSC_6120.JPG



DSC_6125.JPG



DSC_6126.JPG



DSC_6127.JPG



DSC_6128.JPG



DSC_6129.JPG



DSC_6130.JPG



DSC_6131.JPG



DSC_6132.JPG



DSC_6133.JPG



DSC_6136.JPG



DSC_6137.JPG



DSC_6138.JPG



DSC_6139.JPG



DSC_6140.JPG



DSC_6141.JPG



DSC_6142.JPG



DSC_6143.JPG



DSC_6144.JPG



DSC_6145.JPG



DSC_6146.JPG



DSC_6147.JPG



DSC_6148.JPG



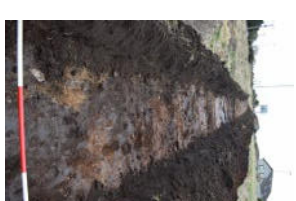
DSC_6149.JPG



DSC_6150.JPG



DSC_6151.JPG



DSC_6152.JPG



DSC_6153.JPG