

Ward Farmhouse, Collieston, Aberdeenshire, AB41 8SP

Photographic survey

National Grid Reference: NK05309 31984

Parish: Slains

Height OD: 40-45m

Planning application no: APP/2016/2881

Alterations and Conversion of Steading to Form 2 Dwellinghouse

Survey carried out by:

Alison Cameron
Cameron Archaeology

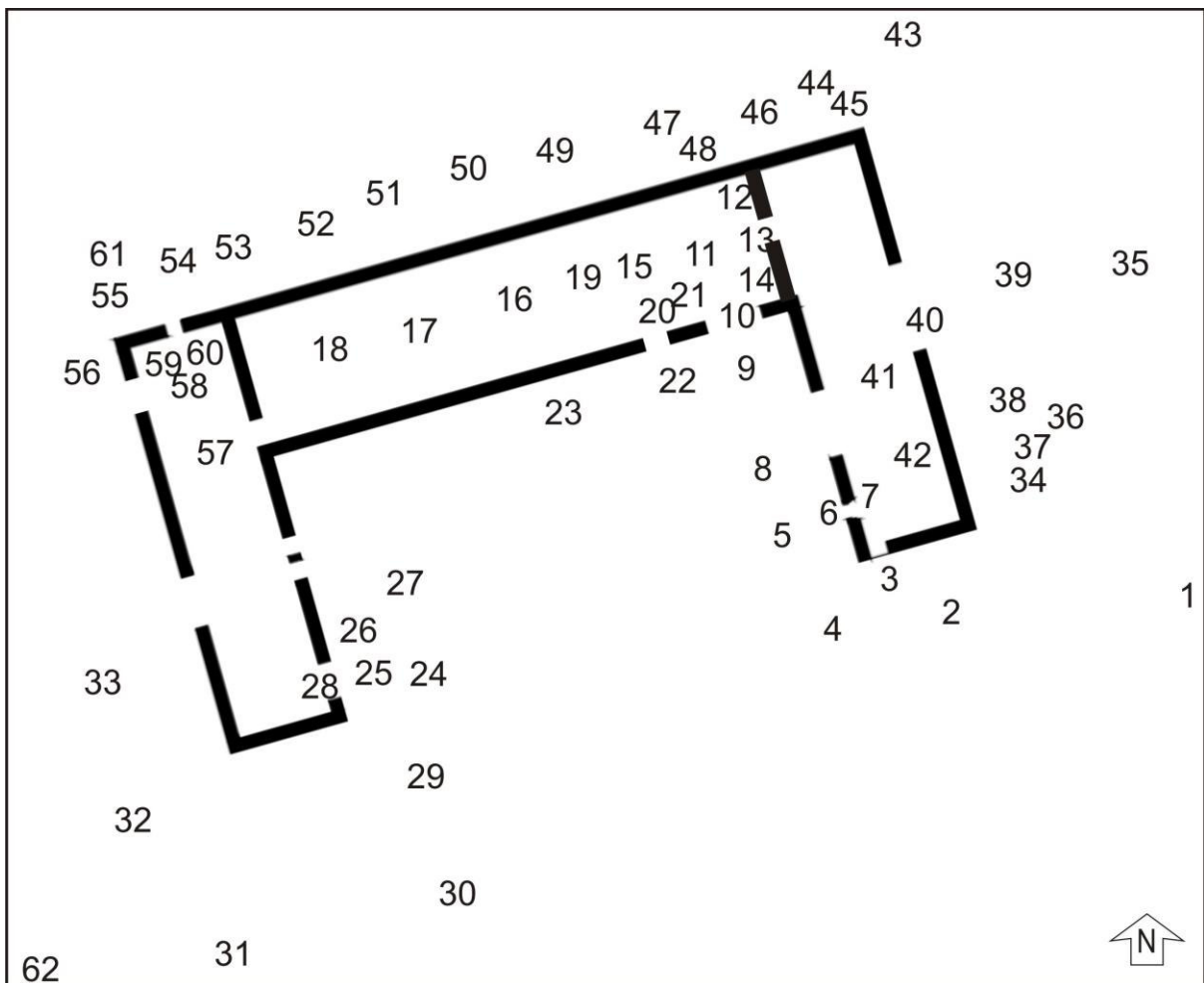
Commissioning client:

Paul Mclellan

Contractor:

Cameron Archaeology
45 View Terrace
Aberdeen
AB25 2RS
01224 643020
07581 181057
cameronarch@btinternet.com
www.cameronarchaeology.com
Company registration no 372223 (Scotland)
VAT registration no 990 4373 00

Date: 30 May 2017



Plan showing camera points used in this survey (from copyright JGI)

Photo no	Details	Facing	Camera point
DSC_0235-6	Steading SE and NE walls	NW	1
DSC_0237	Farm with steading on right	WSW	1
DSC_0240	NE wing SE gable blocked door	NW	2
DSC_0241	NE wing SE gable blocked door	NW	3
DSC_0242	NE wing SE gable	NE	4
DSC_0243	Concrete infill into courtyard	W	5
DSC_0245	NE wing SW wall	ENE	5
DSC_0246-7	NE wing SW wall	NE	5
DSC_0248-9	NE wing SW wall window	ENE	6
DSC_0250	Window sill	ENE	7
DSC_0251-2	NE wing interior through window	SE	7
DSC_0253	NE wing interior through window	ENE	7
DSC_0254	NE wing interior through window roof in poor condition	ENE	7
DSC_0255	NE wing interior through window	NE	7
DSC_0256	NE wing SW wall window	E	8
DSC_0257	NE wing SW wall concrete buttress	ENE	8

DSC_0258	NE wing SW wall door	NE	8
DSC_0259	Central section of steading showing wall and roof collapse	NNW	8
DSC_0260	NE wing (left) concrete infill (right)	SSE	8
DSC_0261	NE wing	NE	9
DSC_0262	NE wing (right) with wall removed (centre)	NNW	9
DSC_0263-4	Central section of steading S wall	WSW	9
DSC_0265	Section through demolished wall	ENE	10
DSC_0266	NE wing W wall	SSE	11
DSC_0267	NE wing W wall N end	ENE	11
DSC_0268	Central section of steading N wall	NNE	11
DSC_0269	Central section of steading	WSW	11
DSC_0270	Blocked window N wall	NNW	12
DSC_0271-2	Waterwashed cobbled floor	S	12
DSC_0273	Waterwashed cobbled floor	WSW	13
DSC_0274	Waterwashed cobbled floor	WSW	13
DSC_0275	Waterwashed cobbled floor	NNW	14
DSC_0276	N wall	NNW	14
DSC_0277	N wall	N	14
DSC_0278	N wall	NNW	15
DSC_0279	N wall	NNW	16
DSC_0280		WSW	17
DSC_0281	Central steading S wall	SW	17
DSC_0282	Central steading	ENE	17
DSC_0283	Central steading N wall	NNW	17
DSC_0284	Central steading N wall	WNW	17
DSC_0285	Central steading WSW wall	WSW	17
DSC_0286	Central steading WSW wall	WSW	18
DSC_0287	Central steading WSW wall	WSW	18
DSC_0288	Central steading WSW wall door	SW	18
DSC_0289	Central steading S wall	SSE	18
DSC_0290	Central steading S wall	SSE	17
DSC_0291	Central steading S wall	SSE	16
DSC_0292	Central steading S wall	SSE	19
DSC_0293	Central steading S wall	SW	15
DSC_0294	Central steading S wall	SSE	15
DSC_0295	Central steading S wall	E	15
DSC_0296	Central steading S wall	SSE	20
DSC_0297	Central steading S wall	SSE	21
DSC_0299	Central steading S wall	W	9
DSC_0300	Central steading S wall showing poor condition of attached buildings	WSW	9
DSC_0301-2	Central steading S wall	NNW	22

DSC_0303	Central steading S wall	NW	22
DSC_0304	Central steading S wall	W	22
DSC_0307	Central steading S wall	W	23
DSC_0308	Central steading S wall	NNW	23
DSC_0309	Central steading S wall	NE	23
DSC_0310	E wing W wall	ENE	23
DSC_0311	E wing W wall	E	22
DSC_0312	E wing W wall	ENE	22
DSC_0313	E wing W wall	SE	22
DSC_0314	Modern infill	NNW	24
DSC_0315-7	W wing E wall	WSW	24
DSC_0318	W wing E wall	WSW	25
DSC_0319	W wing E wall	WSW	26
DSC_0320	Central wing (left) with modern roof over courtyard	ENE	27
DSC_0321	Central wing (left) with modern roof over courtyard	NE	27
DSC_0322	Central wing (left) with modern roof over courtyard	NNW	27
DSC_0323	Central wing (left) with modern roof over courtyard	NW	27
DSC_0325	W wing E wall door	SSW	27
DSC_0327	W wing E wall door	SSW	26
DSC_0328	W wing south end room	WNW	28
DSC_0329	W wing south end room	WSW	28
DSC_0330	W wing south end room	SW	28
DSC_0331	W wing south gable	WNW	29
DSC_0335	W wing south gable	WNW	30
DSC_0336	W wing south gable	NNE	31
DSC_0338	W wing south gable	NE	32
DSC_0339	W wing W wall	ENE	33
DSC_0340	W wing W wall	NE	33
DSC_0357	E wing E wall	WSW	34
DSC_0358	E wing E wall	WSW	35
DSC_0359	E wing E wall	WSW	36
DSC_0360	E wing E wall	WSW	37
DSC_0361	E wing E wall	WSW	38
DSC_0362	E wing E wall	WSW	39
DSC_0363	E wing E wall	W	39
DSC_0364	E wing interior wall section	SSE	40
DSC_0365	E wing interior E wall	ESE	41
DSC_0366	E wing interior SSE gable	SSE	41
DSC_0367	E wing interior W wall	S	41

DSC_0368	E wing interior W wall	WSW	42
DSC_0369	E wing interior W wall	WNW	41
DSC_0370	E wing interior NNW gable	NNW	41
DSC_0371	E wing interior	NNE	41
DSC_0372	E wing interior	NE	41
DSC_0373	E wing interior	ENE	41
DSC_0374	E wing exterior	SSE	43
DSC_0375	N wall	S	43
DSC_0376	N wall	SW	43
DSC_0377	N wall	WSW	43
DSC_0378	N wall	SSE	44
DSC_0379	N wall NE corner showing foundation stones	SSE	45
DSC_0380	N wall	WSW	44
DSC_0381	N wall	SSE	46
DSC_0382	N wall	SE	47
DSC_0383	N wall	SSE	47
DSC_0384	N wall	SSE	48
DSC_0385	N wall	SW	49
DSC_0387	N wall	ESE	49
DSC_0388	N wall	SSE	49
DSC_0389	N wall	SW	49
DSC_0390	N wall	SSE	50
DSC_0391	N wall	SW	50
DSC_0392	N wall	SE	50
DSC_0396	N wall	SSE	51
DSC_0397	N wall	SE	51
DSC_0398	W wing N gable	SW	52
DSC_0399-402	W wing N gable	SW	53
DSC_0403	W wing N gable	SSE	54
DSC_0404	N wall	E	54
DSC_0405	N wall	SW	55
DSC_0406	W wall concrete extension on N of building	WSW	55
DSC_0407	W wall concrete extension on N of building	W	55
DSC_0408	Weight	N	56
DSC_0409	Overgrown area at w end of steading	W	56
DSC_0410-11	Silo	SSE	56
DSC_0412-3	W wing W wall	SE	56
DSC_0414	W wing interiors, poor condition and roof, overridden by pigeons	SSE	57
DSC_0415	W wing interior	SE	57
DSC_0416	E wall	NE	58
DSC_0417	N gable	NNW	58

DSC_0418	N gable	NNW	58
DSC_0419-20	E wall door through to central section of steading	ENE	57
DSC_0421	W wall concrete extension on N of building	WSW	57
DSC_0422-3	W wing interior	SSE	57
DSC_0424	roof	NNW	57
DSC_0425	N gable	NNW	57
DSC_0426	roof	NE	58
DSC_0427	W wing interior	SE	59
DSC_0428	W wing interior	SSE	60
DSC_0429	W wall	SW	60
DSC_0430	W wall	WSW	60
DSC_0431	W wall	WNW	60
DSC_0432-3	N gable	NNW	58
DSC_0434	W wall door	WSW	58
DSC_0435-8	Silo details		
DSC_0440	W end of steading	W	56
DSC_0441	N wall	E	61
DSC_0442	Steading from SSW	NNE	62
DSC_0443	Steading from SSW	N	62



DSC_0235.JPG



DSC_0236.JPG



DSC_0237.JPG



DSC_0240.JPG



DSC_0241.JPG



DSC_0242.JPG



DSC_0243.JPG



DSC_0245.JPG



DSC_0246.JPG



DSC_0247.JPG



DSC_0248.JPG



DSC_0249.JPG



DSC_0250.JPG



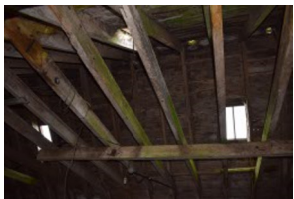
DSC_0251.JPG



DSC_0252.JPG



DSC_0253.JPG



DSC_0254.JPG



DSC_0255.JPG



DSC_0256.JPG



DSC_0257.JPG



DSC_0258.JPG



DSC_0259.JPG



DSC_0260.JPG



DSC_0261.JPG



DSC_0262.JPG



DSC_0263.JPG



DSC_0264.JPG



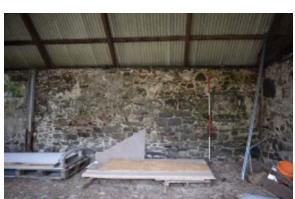
DSC_0265.JPG



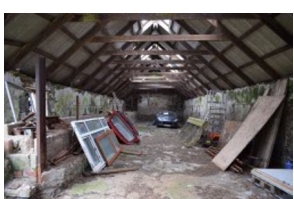
DSC_0266.JPG



DSC_0267.JPG



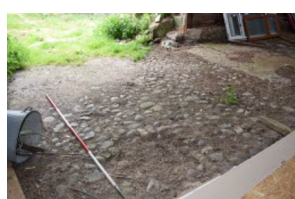
DSC_0268.JPG



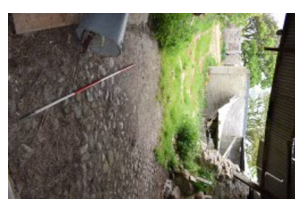
DSC_0269.JPG



DSC_0270.JPG



DSC_0271.JPG



DSC_0272.JPG



DSC_0273.JPG



DSC_0274.JPG



DSC_0275.JPG



DSC_0276.JPG



DSC_0277.JPG



DSC_0278.JPG



DSC_0279.JPG



DSC_0280.JPG



DSC_0281.JPG



DSC_0282.JPG



DSC_0283.JPG



DSC_0284.JPG



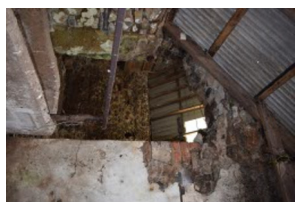
DSC_0285.JPG



DSC_0286.JPG



DSC_0287.JPG



DSC_0288.JPG



DSC_0289.JPG



DSC_0290.JPG



DSC_0291.JPG



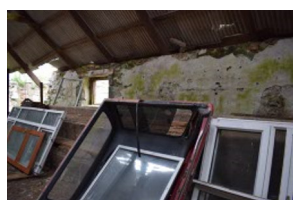
DSC_0292.JPG



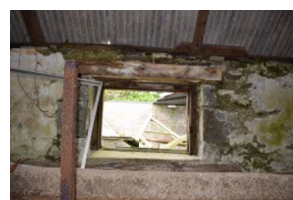
DSC_0293.JPG



DSC_0294.JPG



DSC_0295.JPG



DSC_0296.JPG



DSC_0297.JPG



DSC_0299.JPG



DSC_0300.JPG



DSC_0302.JPG



DSC_0303.JPG



DSC_0304.JPG



DSC_0307.JPG



DSC_0308.JPG



DSC_0309.JPG



DSC_0310.JPG



DSC_0311.JPG



DSC_0312.JPG



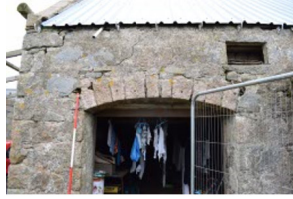
DSC_0313.JPG



DSC_0314.JPG



DSC_0315.JPG



DSC_0316.JPG



DSC_0317.JPG



DSC_0318.JPG



DSC_0319.JPG



DSC_0320.JPG



DSC_0321.JPG



DSC_0322.JPG



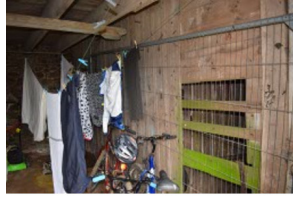
DSC_0323.JPG



DSC_0326.JPG



DSC_0327.JPG



DSC_0328.JPG



DSC_0329.JPG



DSC_0330.JPG



DSC_0331.JPG



DSC_0335.JPG



DSC_0336.JPG



DSC_0338.JPG



DSC_0339.JPG



DSC_0340.JPG



DSC_0357.JPG



DSC_0358.JPG



DSC_0359.JPG



DSC_0360.JPG



DSC_0361.JPG



DSC_0362.JPG



DSC_0363.JPG



DSC_0364.JPG



DSC_0365.JPG



DSC_0366.JPG



DSC_0367.JPG



DSC_0368.JPG



DSC_0369.JPG



DSC_0370.JPG



DSC_0371.JPG



DSC_0372.JPG



DSC_0373.JPG



DSC_0374.JPG



DSC_0375.JPG



DSC_0376.JPG



DSC_0377.JPG



DSC_0378.JPG



DSC_0379.JPG



DSC_0380.JPG



DSC_0381.JPG



DSC_0382.JPG



DSC_0383.JPG



DSC_0384.JPG



DSC_0385.JPG



DSC_0386.JPG



DSC_0387.JPG



DSC_0388.JPG



DSC_0389.JPG



DSC_0390.JPG



DSC_0391.JPG



DSC_0392.JPG



DSC_0393.JPG



DSC_0394.JPG



DSC_0395.JPG



DSC_0396.JPG



DSC_0397.JPG



DSC_0398.JPG



DSC_0399.JPG



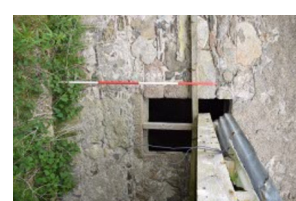
DSC_0400.JPG



DSC_0401.JPG



DSC_0402.JPG



DSC_0403.JPG



DSC_0404.JPG



DSC_0405.JPG



DSC_0406.JPG



DSC_0407.JPG



DSC_0408.JPG



DSC_0409.JPG



DSC_0410.JPG



DSC_0411.JPG



DSC_0412.JPG



DSC_0413.JPG



DSC_0414.JPG



DSC_0415.JPG



DSC_0416.JPG



DSC_0417.JPG



DSC_0418.JPG



DSC_0419.JPG



DSC_0420.JPG



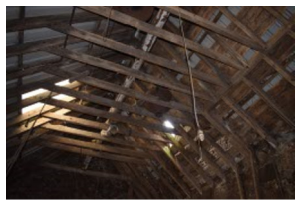
DSC_0421.JPG



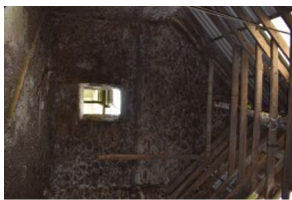
DSC_0422.JPG



DSC_0423.JPG



DSC_0424.JPG



DSC_0425.JPG



DSC_0426.JPG



DSC_0427.JPG



DSC_0428.JPG



DSC_0429.JPG



DSC_0430.JPG



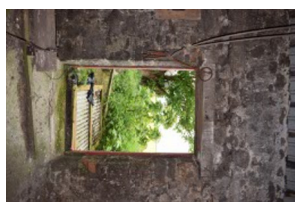
DSC_0431.JPG



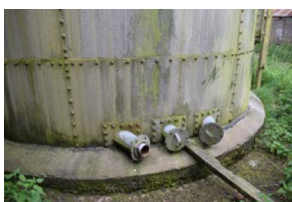
DSC_0432.JPG



DSC_0433.JPG



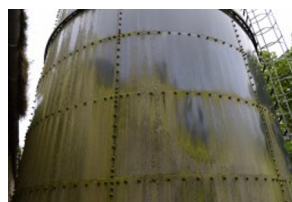
DSC_0434.JPG



DSC_0435.JPG



DSC_0436.JPG



DSC_0437.JPG



DSC_0438.JPG



DSC_0439.JPG



DSC_0440.JPG



DSC_0441.JPG



DSC_0442.JPG



DSC_0443.JPG