

# **Friock Mains, Legaston, Arbroath, DD11 4SJ**

## **A Report on a Watching Brief**



**Dr Robert Lenfert**  
**Cameron Archaeology**  
**15 June 2017**

## **CONTENTS**

1	BACKGROUND .....	3
2	ARCHAEOLOGICAL BACKGROUND .....	4
3	THE WATCHING BRIEF .....	6
4	CONCLUSIONS .....	7
5	ACKNOWLEDGEMENTS .....	7
	APPENDIX 1 .....	8
	APPENDIX 2 MAPS .....	13
	APPENDIX 3 PHOTOS .....	14

## **ILLUSTRATIONS**

Illus 1	Location plan.....	3
Illus 2	Site plan showing proposed development.....	4
Illus 3:	GPS location of soil strip shaded in red.....	7
Illus 4	First Edition OS map showing site outline in red.....	13

## **Summary**

On 12 June 2017 an archaeological watching brief took place at Friock Mains farm. Although the adjacent field contains a number of significant cropmarks identified in aerial photos, the soil strip was relatively small in nature and located up against the existing hard standing, away from previously identified cropmarks. No archaeological finds or features were noted and therefore it is recommended that no further archaeological work is required during the current planning application.

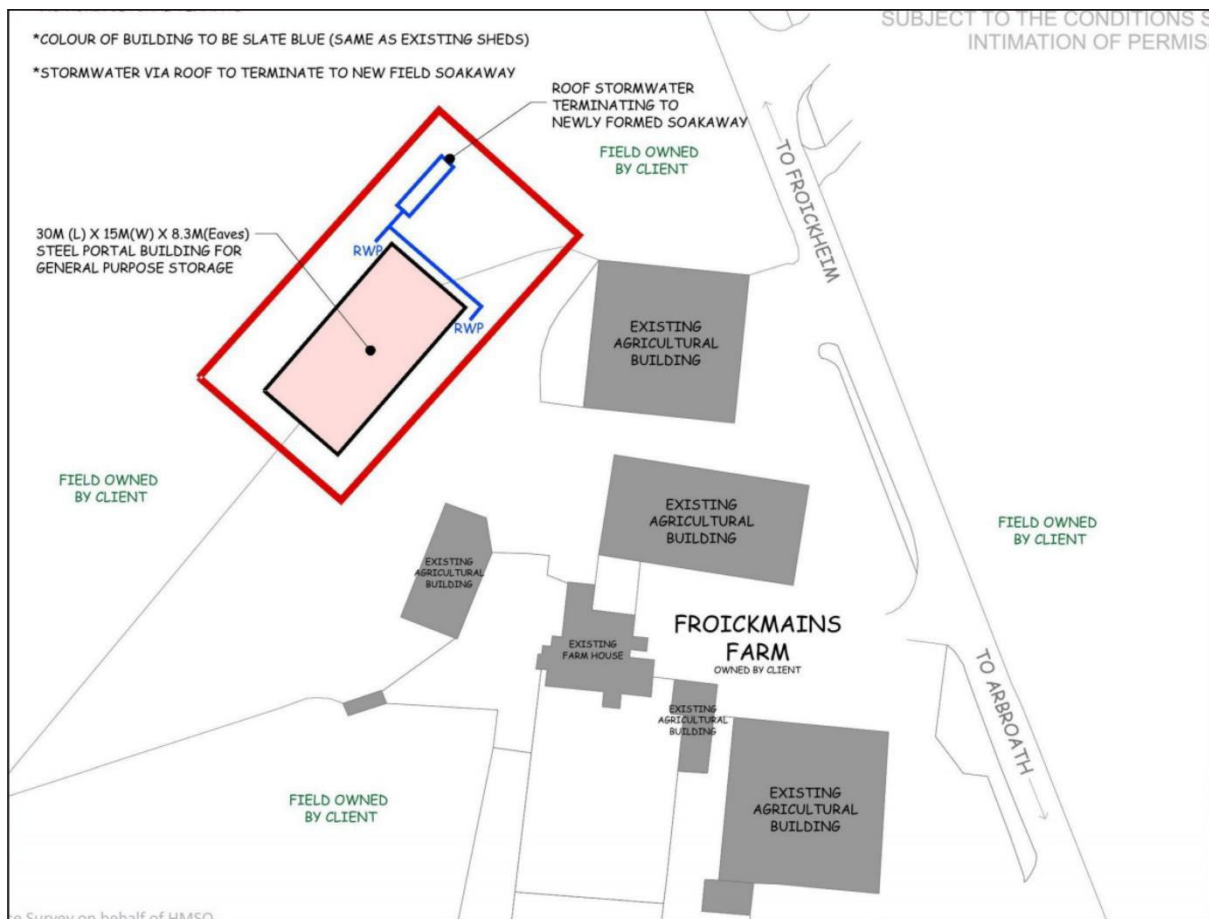


## 1 BACKGROUND

- 1.1 The site (Illus 1) is located on the w side of the A933 at Friockheim. It is centred on NGR NO 5872 4927, at 45-50m OD in the parish of Kirkcalden.
- 1.2 The work was commissioned by Mike Morrison. An application 17/00357/PRIORN for erection of a general purpose agricultural building lies partly within the archaeology site NO54NE0020, an extensive area of cropmarks indicating prehistoric settlement activity which is partly designated as a Scheduled Monument.
- 1.3 All the archaeological work was carried out in the context of Scottish Planning Policy (SPP) Planning Advice Note (PAN 2/2011) and Historic Environment Scotland's Policy Statement (HESPS) which state that archaeological remains should be regarded as part of the environment to be protected and managed.



Illus 3 Location plan (Contains Ordnance Survey data © Crown copyright and database right 2017)



Illus 4 Site plan showing proposed development (copyright pm)

## 2 ARCHAEOLOGICAL BACKGROUND

2.1 There are 7 Scheduled Monuments within 1km of the proposed development.

A pit alignment (HES NO54NE 20) 270m WNW of Friock Mains comprises the remains of a prehistoric pit alignment dating to the Iron Age or earlier (before AD 400). It also includes a ditch that appears to follow the same course as the pit alignment and two other curving features that may be souterrains. The remains lie buried beneath the ploughsoil and are visible as cropmarks captured on oblique aerial photographs. The pit alignment is oriented NE-SW. The most regular part of the feature lies towards the SW end where eight pits, each some 2m in diameter, form a straight line about 30m long. To the NE, the line of pits turns very slightly to the S and here the individual pits appear less evenly distributed. A curving ditch appears to continue NE from the pits and intersects with one of the two potential souterrains. The monument lies at about 50m OD in undulating farmland surrounded by a bend in the Vinny Water, just above and parallel with the break of slope down to the river. The monument is of national importance because of its potential to make a significant addition to knowledge and understanding of prehistoric pit alignments. This monument is well defined on aerial photographs and the pits have high potential to preserve significant archaeological deposits that can tell us about the date and use of the alignment. This potential has been demonstrated by excavation of a similar pit alignment at Warren Fields, Aberdeenshire, where some pits proved to date to around 8000 BC (Mesolithic period), before the advent of farming in Scotland, and individual pits had been cut, partially filled and then re-cut. Pit alignments are also known from the Neolithic, Bronze Age and Iron Age, with Iron Age examples often regarded as agricultural boundaries or territorial divisions. This Friock Mains pit alignment is a significant feature in the prehistoric landscape and supplements the pit-defined cursus monuments that cluster in this part of Angus. It is part of a wider landscape of settlements and ritual/funerary monuments in the Lunan Valley that forms an important concentration of evidence for social and economic change in E Scotland

from around 4000 BC to 1000 AD. Our understanding of the dating, function, distribution and character of prehistoric pit alignments would be diminished if this monument was to be lost or damaged. Oblique aerial photographs (RCAHMSAP 1978) show the cropmarks of a pit-alignment, stretching SW-NE, 200m N of Friock Mains. It measures about 40m and comprises at least eight pits. A number of other pits are visible immediately to the NE. In the same field and partially overlapping the proposed new building, oblique aerial photography (RCAHMSAP 1978) has revealed a rectilinear cropmark (HESNO54NE 21), which may be a possible enclosure, 100m NW of Friock Mains. It measures about 30m NE-SW by 25m transversely. Recent aerial photographs (RCAHMSAP 1995) show additional cropmarks of possible souterrains and round houses, as well as rig and cropmarks. Two souterrains and two round houses, each measuring about 10m in diameter, are situated to the NW of the enclosure. An area with rig is stretching NW-SE across the field. There are also a number of indeterminate cropmarks and pits scattered across this area. The cropmarks of a pit-alignment have been recorded 100m WNW of the enclosure (NO54NE 20).

2.2 A site 400m E of Damside Cottages comprises the remains of an unenclosed settlement (HES NO54NE 41) of prehistoric date represented by cropmarks visible on oblique aerial photographs. The monument lies in undulating arable land at around 50m OD, 400m S of the Lunan Water, in an area rich in the remains of prehistoric settlement and economic activity. The monument is formed by four overlapping dark circular cropmarks which appear to represent the remains of prehistoric roundhouses with surviving internal occupation debris. The largest of the circular features has a diameter of approximately 15m and the group has overall dimensions of approximately 50m E-W by 15m. A short linear cropmark fringes the features to the N. The monument is of national importance because of its potential to add to our understanding of prehistoric house construction and the spatial organisation of domestic and economic activities. Its importance is greatly enhanced by its association with the wider landscape of settlement in this part of the Lunan Valley.

2.3 A souterrain 250m E of Damside Cottages is Scheduled. The monument comprises the remains of a souterrain (HES NO54NE 16), a semi-subterranean storage place of prehistoric date, represented by cropmarks visible on oblique aerial photographs. The monument lies on a slight but well-defined rise in gently undulating arable farmland at around 50m OD. The souterrain is defined by a semi-circular cropmark some 2m wide, with a diameter of approximately 20m. Souterrains are generally believed to represent grain storage buildings of semi-subterranean construction, normally found as part of more extensive settlement units. It may be expected that associated structures, lacking the type of constructional features which produce cropmarks, will survive close to the souterrain. The surrounding area is rich in the remains of prehistoric settlements of the same general period. The area to be scheduled encompasses the visible features and an area around them in which traces of associated activity may be expected to survive. It is circular with a diameter of 70m as marked in red on the accompanying map.

2.4 A pit circle and pit alignments (HES NO54NE 18) 200m SSE of Damside Cottages is Scheduled and comprises the remains of a pit circle and associated features of prehistoric date represented by cropmarks visible on oblique aerial photographs. The monument lies in arable land at around 45m OD on the N bank of the Vinny Water. The pit circle is defined by a series of large pits and has an overall diameter of approximately 10-12m. Two substantial pits are located approximately centrally in the interior and further pits are distributed in and around the circle. On the NW of the circle there are indications that some individual pits have been replaced on a slightly different arc. To the W, along the bank of the burn, are a series of less well-defined cropmarks that may represent associated activity including two possible souterrains to the far W of the field. A pit alignment runs broadly N-S across the field to the W of the pit circle: a parallel linear cropmark fades out close to the N of the pit circle. It is possible that these features represent contemporary activity.

The monument is likely to represent the remains of an area of prehistoric ritual activity focussed on a former timber circle. However, the possibility that some or all of the features are instead related to prehistoric settlement cannot be discounted.



2.5 A ring ditch (HES NO54NE 42) 250m NW of Pitmuies Mill Farm is Scheduled and comprises the remains of a ring ditch house of prehistoric date represented by cropmarks visible on oblique aerial photographs. The monument lies on slightly sloping ground close to the N bank of a canalised section of the Lunan Water at around 40m OD. The ring ditch is defined by a dense, dark circular cropmark some 15-18m in diameter. The nature of the cropmark suggests that internal deposits associated with the occupation of the former timber roundhouse are preserved across the entire interior. Cropmarks to the N and W of the main feature appear to represent a series of pits. The surrounding area is rich in the remains of prehistoric settlement and economic activity.

2.6 A cursus (HES NO55SE 18 ) NE of Milton of Guthrie is Scheduled and comprises the remains of a cursus of prehistoric date, represented by cropmarks visible on oblique aerial photographs. The monument lies across several fields of arable farmland at around 40m OD. It comprises a series of pit alignments forming an elongated rectangular enclosure or cursus approximately 570m long by 30m wide, aligned ESE-WNW. Some 100m from its WNW end is a pit-defined subdivision while another possible subdivision is present a further 100m or so to the E of the first. The pits which form the cursus are most clearly visible at the ESE end, where they can be seen to be evenly spaced and of regular size. The monument belongs to a class of large ceremonial enclosures of the Neolithic period which are found widely throughout Britain but relatively rarely in Scotland.

2.7 Cairn Knap (HES NO54NE 3) is Scheduled and comprises the remains of a burial cairn of Neolithic or Bronze Age date represented by a turf-covered stony mound surrounded by a modern wall. The monument lies in level arable farmland at around 50m OD, immediately NE of a dismantled railway to the S of Friockheim. The cairn is some 22.5m in diameter and stands to a height of some 3m above the surrounding field. It is revetted by a modern drystone wall which serves now to prevent the encroachment of ploughing onto the mound. Nineteenth century excavations exposed two cists and there is every likelihood that more burials remain within and under the mound. On the basis of comparable examples previously excavated, the cairn may also be expected to contain complex constructional features and evidence for funerary and other ritual practices.

2.8 There are numerous other prehistoric and later sites within 1km of the proposed development. Millfield (HES NO55SE 35) is a cropmark, cultivation remains and souterrain, at Damside Cottages there is an enclosure and rig and furrow (HES NO54NE 64), ring ditch (HES NO54NE 40) and pits (HES NO54NE 74), at Milton of Guthrie there are pits and an unenclosed settlement (HES NO54NE 53) and at Milton another unenclosed settlement (HES NO55SE 53).

2.9 Friockheim is the findspot of a stone lamp (HES NO54NE 49) which is in Montrose Museum (Accession no. 1977.9).

2.10 OS maps show the area of the proposed development is on the edge of Friock Mains in a field.

### **3 THE WATCHING BRIEF**

On June 12<sup>th</sup>, 2017 a watching brief took place during the soil strip for the proposed structure and adjacent soakaway. As approximately 60% of the site location overlaps the existing paddock area on the farm which has been previously stripped and replaced with a hardcore surface (illus 3), this translated into a soil strip covering an area some 6.5m x 30m, tapering to a near point in the SW corner. The topsoil depth was consistent throughout the site, averaging 0.30m in depth and consisting of a rich dark brown organic soil. The subsoil was also homogenous throughout the site, consisting of a reddish-brown gritty silty sand. A slight to moderate concentration of rounded cobbles and small stones was incorporated within this matrix. Other than two pieces of modern ceramic and one piece of modern glass, no finds or features were noted.



Illus 3: GPS location of soil strip shaded in red (Image c. Digital Globe 2017).

#### **4 CONCLUSIONS**

Although the field adjacent to the soil strip is known through aerial photos to contain a particular abundance of potential prehistoric archaeology, the cropmarks in photos provided by the landowner appear to begin some 50 to 75m from the soil strip. The father and son who own the farm were also aware of these cropmark locations within their field, and kindly shared large reprints of the above mentioned aerial photos from HES, held in their home archive. It would appear this information allowed them to try and locate the building in an area which was least likely to create any archaeological impact; this was borne out by the watching brief results. Likewise, the soil strip did not produce any archaeological finds or features and no further archaeological mitigation is deemed necessary in regards to the construction of the proposed building.

#### **5 ACKNOWLEDGEMENTS**

Thanks to Mike Morrison for initiating this project and to Claire Herbert, Aberdeenshire Council Archaeology Service for her advice during this work. Thanks also goes to Mike and his father for sharing aerial photos and documents from the family archive during the project.

## APPENDIX 1

Archaeological and historical sites within 1km of the proposed site (HES and Aberdeenshire HER online)

Dataset	Dataset UID	Name	Classification
HERANGUS	NO54NE0003	CAIRN KNAP	Scheduled
HERANGUS	NO54NE0016	DAMSIDE	Scheduled
HERANGUS	NO54NE0019	DAMSIDE	Standard
HERANGUS	NO54NE0020	FRIOCK MAINS	Scheduled
HERANGUS	NO55SE0018	MILTON	Scheduled
HERANGUS	NO55SE0025	MILLFIELD	Standard
HERANGUS	NO54NE0023	MILTON	Standard
HERANGUS	NO54NE0025	FRIOCKHEIM AND KINNEL PARIS...	Standard
HERANGUS	NO54NE0027	PITMUIES MILL	Standard
HERANGUS	NO54NE0032	MIDDLETON HOME FARM	Standard
HERANGUS	NO54NE0040	DAMSIDE	Standard
HERANGUS	NO54NE0041	DAMSIDE	Scheduled
HERANGUS	NO54NE0042	PITMUIES MILL FARM	Scheduled
HERANGUS	NO54NE0043	PITMUIES MILL COTTAGES	Standard
HERANGUS	NO54NE0044	FRIOCKHEIM, RAILWAY VIADUCT	Standard
HERANGUS	NO54NE0046	BOBBIN FACTORY, MIDDLEGATE,...	Standard
HERANGUS	NO54NE0047	FRIOCKHEIM, FRIOCKFIELD WORKS	Standard
HERANGUS	NO54NE0054	MILTON OF GUTHRIE	Standard
HERANGUS	NO54NE0064	LEGASTON	Standard
HERANGUS	NO54NE0087	LEGASTON	Standard
HERANGUS	NO54NE0081	WEST BORDER	Standard



HERANGU S	NO54NE0082	WEST BORDER	Standard
HERANGU S	NO54NE0021	FRIOCK MAINS	Standard
HERANGU S	NO54NE0028	MIDDLETON, NORTH LODGE GATES	Standard
HERANGU S	NO54NE0029	MIDDLETON, SOUTH LODGE	Standard
HERANGU S	NO54NE0035	MIDDLETON	Standard
HERANGU S	NO54NE0036	MIDDLETON, GARDENERS COTTAGE	Standard
HERANGU S	NO54NE0037	MIDDLETON, NORTH LODGE	Standard
HERANGU S	NO54NE0049	FRIOCKHEIM	Standard
HERANGU S	NO54NE0051	FRIOCKHEIM	Standard
HERANGU S	NO54NE0090	MILLGATE, FRIOCKHEIM	Standard
HERANGU S	NO54NE0093	EASTGATE, FRIOCKHEIM	Standard
HSSM	NO 57916 49622	Damside Cottages,souterrain 250m E of	Scheduled Monument
HSSM	NO 58089 49588	Damside Cottages,settlement 400m E of	Scheduled Monument
HSSM	NO 58564 49941	Pitmuies Mill Farm,ring ditch 250m NW of	Scheduled Monument
HSSM	NO 58520 49336	Friock Mains, pit alignment 270m WNW of	Scheduled Monument
HSSM	NO 59318 49013	Cairn Knap,cairn	Scheduled Monument
HSSM	NO 59052 50017	Milton of Guthrie, cursus NE of	Scheduled Monument
RCAHMS	NO 59400 49700	FRIOCKHEIM, GENERAL	TOWN (PERIOD UNASSIGNED)
RCAHMS	NO 58943 49794	MILTON OF GUTHRIE	PIT(S) (PERIOD UNASSIGNED), UNENCLOSED SETTLEMENT (PERIOD UNASSIGNED)(POSSIBLE). ALTNAME = FRIOCKHEIM
RCAHMS	NO 59300 49600	FRIOCKHEIM	ENCLOSURE (PERIOD UNASSIGNED), LINEAR FEATURE(S) (PERIOD UNASSIGNED), RIG AND FURROW (MEDIEVAL)
RCAHMS	NO 59400 48600	LEGASTON	PIT ALIGNMENT(S) (PREHISTORIC)

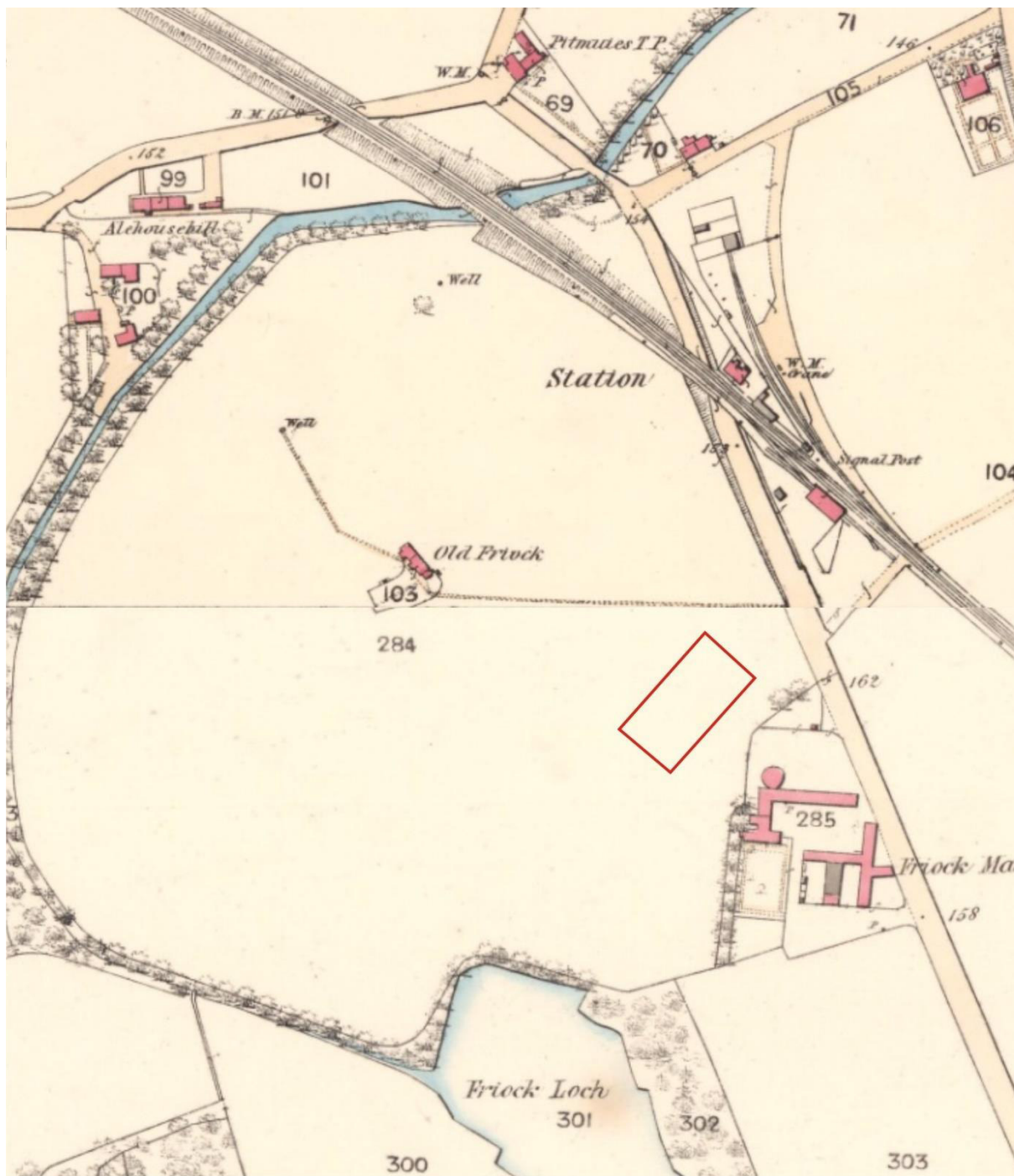
RCAHMS	NO 58400 49830	PITMUIES	PIT(S) (PERIOD UNASSIGNED), PIT ALIGNMENT(S) (PREHISTORIC), RIG AND FURROW (MEDIEVAL)
RCAHMS	NO 59270 49880	FRIOCKHEIM	PIT(S) (PERIOD UNASSIGNED), PIT ALIGNMENT(S) (PREHISTORIC)
RCAHMS	NO 58100 49800	DAMSIDE COTTAGES	ENCLOSURE (PERIOD UNASSIGNED), RIG AND FURROW (MEDIEVAL)
RCAHMS	NO 58000 49140	FINGER HILL	CROPMARK(S) (PERIOD UNKNOWN), PIT ALIGNMENT (PREHISTORIC), RIG AND FURROW (MEDIEVAL). ALTNAME = MIDDLETON HOUSE POLICIES
RCAHMS	NO 59144 49673	FRIOCKHEIM PUBLIC HALL	HALL (PERIOD UNASSIGNED). ALTNAME = FREEMASONS HALL
RCAHMS	NO 59270 49683	FRIOCKHEIM, 13-14 GARDYNE STREET, THE STAR INN	HOTEL (PERIOD UNASSIGNED), PUBLIC HOUSE (PERIOD UNASSIGNED)
RCAHMS	NO 58210 49490	ALEHOUSEHILL	RING DITCH (PERIOD UNASSIGNED). ALTNAME = MIDDLETON HOUSE POLICIES
RCAHMS	NO 57920 49770	DAMSIDE	PIT(S) (PERIOD UNASSIGNED)
RCAHMS	NO 58303 48666	MIDDLETON	COUNTRY HOUSE (PERIOD UNASSIGNED). ALTNAME = MIDDLETON HOUSE POLICIES, MIDDLETON HOUSE
RCAHMS	NO 58405 49036	MIDDLETON, VINNEY COTTAGE	COTTAGE (PERIOD UNASSIGNED). ALTNAME = VINNY COTTAGE, MIDDLETON HOUSE POLICIES
RCAHMS	NO 58273 48636	MIDDLETON, GARDEN, SUNDIAL	SUNDIAL (PERIOD UNASSIGNED). ALTNAME = MIDDLETON HOUSE POLICIES
RCAHMS	NO 58195 49160	MIDDLETON, NORTH DRIVE, FINGERHILL BRIDGE	BRIDGE (PERIOD UNASSIGNED). ALTNAME = VINNY WATER, VINNY BURN, FINGER HILL, MIDDLETON HOUSE POLICIES, MIDDLETON HOUSE, ESTATE BRIDGE
RCAHMS	NO 59248 49665	FRIOCKHEIM, GARDYNE STREET, GENERAL	GENERAL VIEW
RCAHMS	NO 59482 49799	FRIOCKHEIM, EAST GATE, PUBLIC SCHOOL	SCHOOL (PERIOD UNASSIGNED). ALTNAME = RESOURCE CENTRE
RCAHMS	NO 59642 49716	FRIOCKHEIM, 52 GARDYNE STREET, BRUCE MASONIC LODGE NO. 593	MASONIC HALL (PERIOD UNASSIGNED)
RCAHMS	NO 59350 50000	FRIOCKHEIM	NO CLASS (EVENT)
RCAHMS	NO 58466 49478	ALEHOUSEHILL	FARMSTEAD (PERIOD UNASSIGNED). ALTNAME = MIDDLETON HOUSE POLICIES
RCAHMS	NO 58761 49221	FRIOCK MAINS	FARMHOUSE (PERIOD UNASSIGNED), FARMSTEAD (PERIOD UNASSIGNED). ALTNAME = MIDDLETON HOUSE POLICIES
RCAHMS	NO 58943 48644	MIDDLETON QUARRY	QUARRY (PERIOD UNASSIGNED). ALTNAME = MIDDLETON HOUSE POLICIES

RCAHMS	NO 58969 48800	MIDDLETON, QUARRY COTTAGE	COTTAGE (PERIOD UNASSIGNED). ALTNAME = MIDDLETON HOUSE POLICIES
RCAHMS	NO 58215 48549	MIDDLETON, LAKE, PUMP HOUSE	PUMP HOUSE (PERIOD UNASSIGNED). ALTNAME = MIDDLETON HOUSE POLICIES
RCAHMS	NO 58665 49498	FRIOCKHEIM, STATION ROAD, STATION	RAILWAY STATION (19-20TH CENTURY). ALTNAME = FRIOCKHEIM STATION
RCAHMS	NO 58749 49441	FRIOCKHEIM, STATION ROAD, STATION HOUSE	HOUSE (PERIOD UNASSIGNED). ALTNAME = FRIOCKHEIM STATION, STATION HOUSE
RCAHMS	NO 58641 49516	FRIOCKHEIM, STATION ROAD, STATION, BRIDGE	RAILWAY BRIDGE (19-20TH CENTURY). ALTNAME = FRIOCKHEIM STATION, RAILWAY BRIDGE, VINNY WATER
RCAHMS	NO 57861 49556	DAMSIDE	MILESTONE (PERIOD UNASSIGNED)
RCAHMS	NO 59100 49650	FRIOCKHEIM, MILLGATE, DRILL HALL	DRILL HALL (FIRST WORLD WAR), HOUSE (20TH CENTURY). ALTNAME = THE ARMOURY
RCAHMS	NO 57900 49600	DAMSIDE	ENCLOSURE (PERIOD UNASSIGNED), RIG AND FURROW (MEDIEVAL)
RCAHMS	NO 58490 49340	FRIOCK MAINS	PIT ALIGNMENT (PREHISTORIC). ALTNAME = MIDDLETON HOUSE POLICIES
RCAHMS	NO 58600 49350	FRIOCK MAINS	CROPMARK(S) (PERIOD UNKNOWN), ENCLOSURE (PERIOD UNASSIGNED)(POSSIBLE), PIT(S) (PERIOD UNASSIGNED), RIG AND FURROW (MEDIEVAL), ROUNDHOUSE(S) (PREHISTORIC)(POSSIBLE), SOUTERRAIN(S) (PREHISTORIC)(POSSIBLE). ALTNAME = MIDDLETON HOUSE POLICIES
RCAHMS	NO 59302 49993	MILTON	RIG AND FURROW (MEDIEVAL). ALTNAME = PITMUIES MILL FARM, FRIOCKHEIM
RCAHMS	NO 59125 49678	FRIOCKHEIM, MILLGATE, FRIOCKHEIM AND KINNEL QUOD SACRA PARISH CHURCH	CHURCH (PERIOD UNASSIGNED). ALTNAME = STATION ROAD, FRIOCKHEIM AND KINNEL PARISH CHURCH
RCAHMS	NO 58720 49700	PITMUIES MILL	MILL (PERIOD UNASSIGNED)
RCAHMS	NO 58122 49515	MIDDLETON, NORTH LODGE, GATES	GATE(S) (PERIOD UNASSIGNED). ALTNAME = MIDDLETON HOUSE POLICIES
RCAHMS	NO 59310 49010	CAIRN KNAP	CAIRN (PERIOD UNASSIGNED)
RCAHMS	NO 58371 48793	MIDDLETON HOME FARM	FARMHOUSE (PERIOD UNASSIGNED), FARMSTEAD (PERIOD UNASSIGNED). ALTNAME = MIDDLETON HOUSE POLICIES
RCAHMS	NO 58364 48687	MIDDLETON, GARDEN HOUSE	GARDEN HOUSE (PERIOD UNASSIGNED). ALTNAME = MIDDLETON HOUSE POLICIES



RCAHMS	NO 58494 48742	MIDDLETON, GARDENER'S COTTAGE	COTTAGE (PERIOD UNASSIGNED). ALTNAME = MIDDLETON HOUSE POLICIES
RCAHMS	NO 58135 49507	MIDDLETON, NORTH LODGE	LODGE (PERIOD UNASSIGNED). ALTNAME = MIDDLETON HOUSE POLICIES
RCAHMS	NO 57960 49800	DAMSIDE	RING DITCH (PERIOD UNASSIGNED)(POSSIBLE)
RCAHMS	NO 58110 49560	DAMSIDE	UNENCLOSED SETTLEMENT (PERIOD UNASSIGNED)
RCAHMS	NO 58540 49910	PITMUIES	PIT(S) (PERIOD UNASSIGNED), RING DITCH (PERIOD UNASSIGNED)
RCAHMS	NO 58300 49500	PITMUIES MILL COTTAGES	ENCLOSURE (PERIOD UNASSIGNED)(POSSIBLE). ALTNAME = MIDDLETON HOUSE POLICIES
RCAHMS	NO 58873 49634	FRIOCKHEIM, RAILWAY VIADUCT	RAILWAY VIADUCT (19-20TH CENTURY). ALTNAME = LUNAN WATER
RCAHMS	NO 59380 49820	FRIOCKHEIM, MIDDLEGATE, BOBBIN FACTORY	FACTORY (PERIOD UNASSIGNED)
RCAHMS	NO 59420 49930	FRIOCKHEIM, FRIOCKFIELD WORKS	BLEACH WORKS (PERIOD UNASSIGNED). ALTNAME = FRIOCKHEIM BLEACHWORKS
RCAHMS	NO 59000 49000	FRIOCKHEIM	FINDSPOT, LAMP (STONE)
RCAHMS	NO 59100 50020	MILTON	PIT DEFINED CURSUS (NEOLITHIC). ALTNAME = MILTON OF GUTHRIE, MILTON 1, MILTON 2
RCAHMS	NO 58200 50100	MILLFIELD	PIT ALIGNMENT (PREHISTORIC)

## APPENDIX 2 MAPS



Illus 4 First Edition OS map showing site outline in red (*copyright National Library of Scotland*)  
 Forfar Sheet XL.5, 9 (Kirkden)  
 Survey date: 1859 Publication date: 1865

## APPENDIX 3 PHOTOS

Photo ID	Direction Facing	Comments
DSC_2393	SW	Area prior to soil strip
DSC_2395	NE	Soil strip commencing
DSC_2398	NE	Soil strip in progress
DSC_2400	NE	Soil strip in progress
DSC_2403	NE	Soil strip in progress
DSC_2404	SW	Soil strip in progress
DSC_2406	NE	Soil strip in progress
DSC_2408	--	Modern ceramic and glass from topsoil/subsoil interface
DSC_2413	SW	First pass of soil strip completed
DSC_2417	NW	View of soil strip area from paddock
DSC_2418	W	View of soil strip area from paddock
DSC_2419	SW	View of soil strip area from paddock
DSC_2420	N	Soil strip nearing completion
DSC_2426	SW	Soil strip completed
DSC_2427	NE	Soil strip completed
DSC_2428	NE	Soil strip completed
DSC_2429	NW	Trench section showing topsoil depth which remained consistent throughout trench.





\_DSC2429.jpg



\_DSC2393.jpg



\_DSC2395.jpg



\_DSC2398.jpg



\_DSC2400.jpg



\_DSC2403.jpg



\_DSC2404.jpg



\_DSC2406.jpg



\_DSC2408.jpg



\_DSC2413.jpg



\_DSC2417.jpg



\_DSC2418.jpg



\_DSC2419.jpg



\_DSC2420.jpg



\_DSC2426.jpg



\_DSC2427.jpg



\_DSC2428.jpg