

**Report on an Archaeological Watching Brief
Aboyne Tennis Club, Ballater Road,
Aboyne, AB34 5HT
Cameron Archaeology CA358-2017**



**Dr Robert Lenfert
Cameron Archaeology
01-08-2017**

Contents

1	BACKGROUND	3
2	ARCHAEOLOGICAL BACKGROUND	4
3	THE WATCHING BRIEF.....	7
4	CONCLUSIONS.....	8
5	REFERENCES.....	8
6	ACKNOWLEDGEMENTS	9
	APPENDIX 1: PHOTOS	9
	APPENDIX 2: Archaeological and historical sites within 1km of the proposed site (HES and Aberdeenshire HER online)	10
	APPENDIX 3 MAPS.....	17

Illustrations

Illustration 1: Location plan (Contains Ordnance Survey data © Crown copyright and database right 2017)	3
Illustration 2: Plan showing proposed trench (image copyright SSE).	7
Illustration 3: Aerial image of trench location in relation to Victory Hall and Tennis Courts (image c. Digital Globe 2017).	8
Illustration 4: First Edition OS map showing site outline in red (copyright National Library of Scotland). Aberdeen Sheet LXXXII.14 (Aboyne and Glentanner) Survey date: 1867 Publication date: 1870	17
Illustration 5: Second Edition OS map showing site outline in red (copyright National Library of Scotland) Aberdeenshire 082.14 (includes: Aboyne and Glen Tanar; Birse) .	17

Cover: Trenching underway along car park area beside Victory Hall.

Summary

On July 26th-28th, 2017 a watching brief took place at Aboyne Tennis Club. Groundworks involved excavation of a 120m long trench for an electrical cable and a box trench for the junction with the existing power supply. A number of ceramic sherds mixed with coal refuse and one intact late 19th or early 20th C glass bottle was recovered. No other finds or features were noted. The trench is now complete and backfilled.

1 BACKGROUND

- 1.1 The site (Illus 1) is located on the W and N side of Victory Hall, Aboyne. It is centred on NGR NO 52743 98651, at 125-130m OD in the parish of Aboyne and Glentanar.
- 1.2 The work was commissioned by SSE. Aberdeenshire Council Archaeology Service required a watching brief during all groundworks.
- 1.3 All the archaeological work was carried out in the context of Scottish Planning Policy (SPP) Planning Advice Note (PAN 2/2011) and Historic Environment Scotland's Policy Statement (HESPS) which state that archaeological remains should be regarded as part of the environment to be protected and managed.

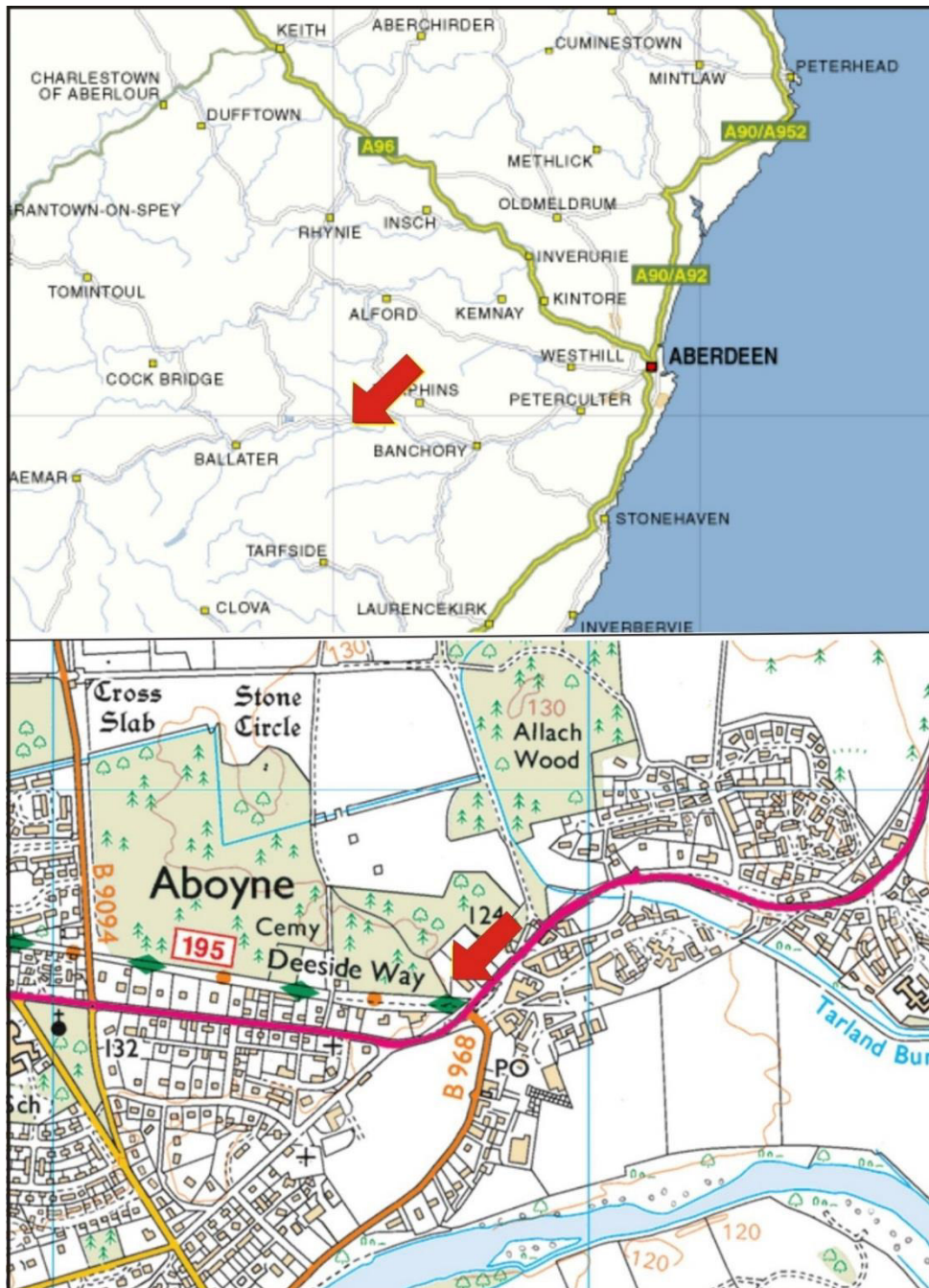


Illustration 1: Location plan (Contains Ordnance Survey data © Crown copyright and database right 2017)

2 ARCHAEOLOGICAL BACKGROUND

- 2.1 There is one Scheduled monument within 1km of the proposed development. East Mains of Aboyne (HER NO59NW0025). The monument comprises the remains of an enclosure and timber house of later prehistoric date, visible as cropmarks on oblique aerial photographs. The monument lies in arable farmland at around 120m OD. It comprises a circular palisaded enclosure, with a diameter of approximately 26m with an entrance to the E. A circle within the enclosure, measuring about 17m in diameter, probably indicates the remains of a timber roundhouse. It also has an entrance to the E in line with that of the enclosure. Other cropmarks in the vicinity include pits and linear features, which may represent the remains of associated structures. These cropmarks may not all be contemporary and might represent a long history of human occupation in this area in the later prehistoric period (Ralston 1984, 80-1).
- 2.2 The Formaston Stone (HER NO59NW0015) was a Class II Pictish stone, part of an upright cross-slab, inscribed with oghams, and sculptured with relief interlacing and a mirror symbol, was found in the late 19th Century under the doorway of the old church of St. Adamnan, Formaston (NJ50SW0001). The stone was removed from the old churchyard before c.1900 and relocated to the grounds of Aboyne Castle (first at NO 5263 9953, then moved to NO 5210 9924 in c.1960), before being moved by A. A. Woodham to Inverurie Museum c.1964. The stone was moved to the Victory Hall at Aboyne (NO59NW0053) in 2002. While it stood in the grounds of Aboyne Castle (in the 20th Century), laid at its base, on the W side, was a loose stone with an inscribed cross on its upper face, but nothing further is known about the origin of this loose stone, or its current location.
- 2.3 The Victory Hall was the site of a tollbooth (HER NO59NW0045). Local knowledge (mid-19th century) states that at one time it was used as a lodge for Aboyne Castle.
- 2.4 Mains of Aboyne (HER NO59NW0049) Cropmarks; possible ring ditches and souterrains in field immediately S of large rectilinear enclosure NO59NW0028. (Grieg 1994, 27). NO59NW0028 is a Cropmark of a large rectilinear enclosure; slightly rounded corners; only S half visible on AP; possible entrance gap on W side.
- 2.5 Aboyne Castle (HER NO59NW0058) is the remains of a 17th to 19th-century designed landscape. A tall rambling multi-period mansion now falling into ruin, occupying almost the same site as a possible medieval peel and a horizontal motehill (Simpson 1949) castle of the Bissets, lords of Strathdee from before 1233. The site was protected by a wide, boggy loch formed by the Tarland Burn. The present building has been so much altered and enlarged in the 18th and 19th centuries that its original plan cannot now be determined, but the NW portion is the oldest incorporating a five-storey circular tower corbelled to square and crowned by a classical balustrade. This is presumably part of the "house" capable of defence which existed in 1638 and was partially rebuilt in 1671. A later replica of this tower stands at the NE angle. In 1242 the Thanage of Aboyne lapsed to the Crown and the estate appears thereafter as a favourite royal residence. It played a locally important part in the Wars of Independence, and in 1307 Edward I sent instructions for its fortification. No further record exists until the mention of the 17th century "house". Simpson (1929, 117-9; 1949, 27-30) was of the opinion that the late 13th century and 14th century references to the Castle of Aboyne actually referred to Coull Castle (NJ50SW 5) and that no medieval peel existed. He explained away references to it as misinterpretations. Aboyne Castle belongs to the Marquis of Huntly whose family have held the property since at least the early 15th century (Bogdan and Bryce 1991, 32; Coventry 2001, 45; Tranter 1962-70, 14-15).

- 2.6 At Tarland Road (HER NO59NW0078) an archaeological evaluation was undertaken by Murray Archaeology Services Ltd in 2007 prior to development on an area of land c11.53 hectares in size at Tarland Road, Aboyne. No archaeological features were recorded, although a number of pottery sherds were recovered dating from the 18th-20th century. A number of features relating to an improved landscape were also recorded.
- 2.7 Mains of Aboyne (HER NO59NW0071) is a former farmstead. Single storey and attic, 3 ranges arranged in U-plan around courtyard. Coursed granite rubble with long and short dressings. The west range has a graded grey slate roof with lead and tiled ridge, and cast-iron rainwater goods. Coped granite gablehead and ridge stacks with circular and octagonal cans. Within the western elevation a tooled lintel reading '17 CEA 57'. The northern range is a former Cartshed and Granary. The south elevation has 7 bays and segmental-arched openings to right of ground floor. The east elevation is a near-symmetrical single bay with infilled segmental-arched opening. The north elevation has 4 bays, with a square-plan engaged tower located at the penultimate bay to left. Small rectangular openings are in the 3 upper floors. A crenellated parapet with birdcage bellcote and bell is to the north, with a pyramidal slate spire. The 1st edition OS map (c.1867) shows the U-shaped steading with the court facing WSW. Within the mouth of the court is a T-shaped range which almost completely blocks the opening. This range has a horse-mill attached on the west. To the south are three additional buildings, the southernmost of which has an attached enclosure. By the 2nd edition OS map (c.1888) the buildings to the south have been removed and there are additional small buildings to the west and north of the steading. To the north-west is a large building. This is a model farm, built in 1889 by the architect George Truefitt for Sir William Close Brooks. This includes the -Coo Cathedral- a surreal cowshed with fanlight windows, matching side wings and a basilican interior with arcades of dressed stone forming nave and aisles. The 2006 map shows that the smaller buildings by the original farm buildings have been removed, as has the eastern range of the U-shaped building. The southern range of the original buildings has been converted into offices and Coo Cathedral is now a banqueting hall.
- 2.8 In Aboyne there are many 19th-century buildings of note. Aboyne Station (HER NO59NW0020), the former railway station was opened in 1859 by the Aboyne Extension Railway and rebuilt 1900. It is two platform with a massive granite building on the up platform. This is single storey with pepper-pot turrets, central entrance and awning. Steel-framed glazed awnings supported on cast-iron columns cover both platforms and a covered footbridge linked the platforms. The awnings were removed in 1985 and the station is now part of a shopping centre.
- 2.9 Aboyne South Free Church (HER NO59NW0055) the former Free Church, built in 1859, but no longer in ecclesiastical use. It is rectangular in plan, of Gothic design with a square-plan tower and a hall to rear. Built of squared pink granite blocks with finely finished pink sandstone dressings, diagonal buttresses, and pointed-arched window and door openings. The roof is of graded grey slate with stone skews, mannered skewputts and a coped gablehead stack with a circular can to SE. The entrance tower on the NW elevation is 2-stage rising to a stone spire. It has a moulded, chamfered doorway on the ground floor with a round window above. There are tripartite louvred openings to the 2nd stage with clock face to the front and 4 columned and pedimented lucarnes at broached spire with 4 further (smaller) lucarnes, and a Masonic symbol finial. Each flanking bay has a window with single storey squinches to re-entrant angles. The SW elevation has 3 bays, with a window to each bay. The ground floor of the SE elevation is obscured by the hall; a wheel window is set in gablehead. Diamond-pane leaded windows. The congregation which formerly worshipped here held their first services in the

sawmill of Aboyne until a church and manse was built in Birse Parish in 1843-4. The congregation moved to this building in 1859 and after the union of the Established and Free churches in 1929 it continued in use until 1940. It was used as a store for the duration of the Second World War, called the Sugar Store by locals, and with the annex built onto the side used as a cookhouse. From 1946 until 1993 the building was used as a Masonic Temple, since when it has enjoyed wider use.

- 2.10 Aboyne Parish Church (HER NO59NW0040) is a Stepped Perpendicular Gothic church built in 1842, incorporating 1761 Huntly Vault. Coursed tooled granite with finely finished dressings. Angle buttresses breaking eaves with coped pyramidal finial, and eaves cornice. Predominantly small-pane timber traceried windows. Grey slate roof with lead ridge. Coped stone skews. 2 coped stacks to lean-to vestry. Cast-iron rainwater goods. Single storey plain gothic church hall to west of church. Built in 1902. Tooled coursed pink granite with some ladder snecking, finely finished to margins. Chamfered pointed-arched openings and timber eaves course. Predominantly square-pane leaded windows. Purple grey slate roof with lead ridge and 2 cast-iron ventilators. Coped stone skews with decorative finials. Cast-iron rainwater goods. The hall was used to cater for any overflow of evacuees during WWII coming in from Glasgow that couldn't be fitted into the nearby school. Recently converted to a business centre. The grave yard surrounding church enclosed by rubble boundary wall with pointed coping. Gates to E and W with square grey granite gatepiers, coped with ogee caps and spherical finials, pedestrian gateway to E with geometric ironwork gates.
- 2.11 Drinking fountain (HER NO59NW0080) originally proposed to commemorate Queen Victoria's Diamond Jubilee, although it was not completed until 1904. The inscription reads 'Erected by the inhabitants of Aboyne and neighbourhood in commemoration of the Diamond Jubilee of Her Majesty Queen Victoria 1897 and the coronation of His Majesty King Edward VII 1902'.
- 2.12 Later buildings include the Aboyne Business Centre (HER NO59NW0056) formerly the school for Aboyne, was used during WWII as an evacuee station for those coming from Glasgow. The locals were schooled in the morning and the evacuees in the afternoon up to Christmas 1939. Possibly as many as 1250 people were evacuated to the Deeside area in 1939. Any overflow from this centre was passed onto the nearby church hall.
- 2.13 On the south side of the river Dee at Birse Moor (HER NO59NW0057) A saw mill is depicted on the 1867 1st edition OS map. It shows a rectangular building fed by a lade running from a pond immediately to the south. This pond is in turn fed from a larger one further up the hill with the lade leading back to Biresmore Loch. Today the small pond has been filled in and the mill has been demolished. The large pond is still evident although no longer holding water, and is overgrown with trees.
- 2.14 At Waterside Farm (HER NO59NW0018) are two hut circles. The eastern circles is 17 metres in diameter. It has a possible entrance in the west. Several large stones are visible in the wall, especially in the north-west. It is best preserved in the north arc. A second hut circle lies circa 20 metres to the west. The eastern circle is circa 16 meters in diameter. There are stones visible in the west arc – but it is difficult to trace in the east and south. The farmer reports lines of old stone walls and possible clearance heaps on the slopes of Knappy Park to the south. The Park is too densely covered in scrub and bracken to confirm or define limits. Several possible clearance heaps were seen in the area immediately south off the road (Shepherd 1976, 5).

2.15 Mapping shows the site was in trees at the area of the First Edition OS map (Illus 3) and by the date of the Second Edition OS map (Illus 4) a small building had been built on the frontage parallel to the road with a rectangular enclosure. The N end of the proposed trench location was still in trees.

3 THE WATCHING BRIEF

On July 26th to the 28th, 2017, a 120m long ditch, 400mm wide and 700mm deep was excavated using a mini-digger (illus 2& 3). The trench ran from the junction with buried services near the Ballater Road (A93) along the W edge of the Victory Hall Car Park, behind the building and on to the new junction box located next to the tennis cabin at the W end of the tennis courts. The stratigraphy was relatively consistent overall, with a gravel layer some 20-25cm deep overlying a grey-brown gritty sand subsoil in the car park area, changing to a reddish-brown gritty sandy-silt sub in the rear of the property, which had previously been levelled for a putting green which is now defunct. The levelled fill in the rear contained several dumped deposits of modern coal fire waste, with a small number of modern ceramic sherds within. Some 10m from the tennis cabin, an intact glass bottle marked 'Hay and Sons, Huntly' was discovered in the topsoil/subsoil interface. Hay and Sons produced 'aerated waters' and ginger beer, amongst other non-alcoholic beverages such as lemonade during the 19th and 20th centuries.

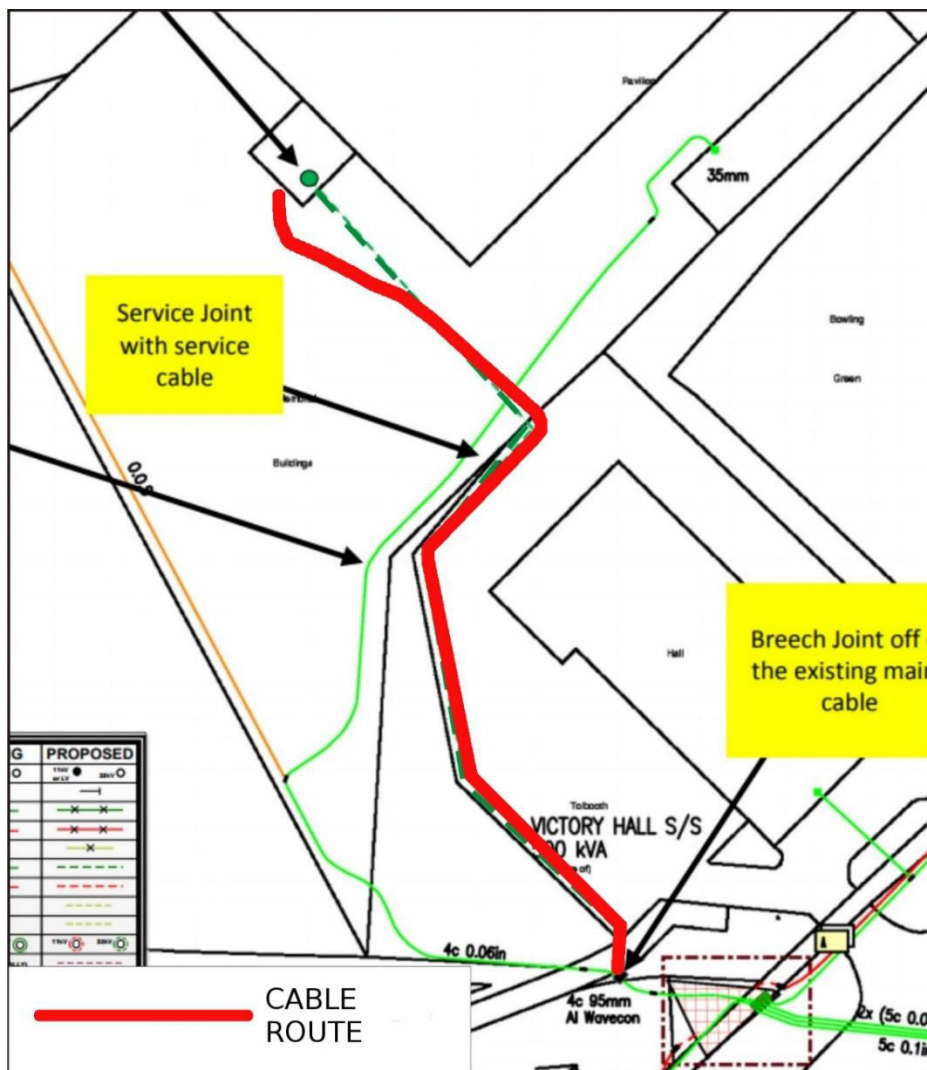


Illustration 2: Plan showing proposed trench (image c. SSE).



Illustration 3: Aerial image of trench location in relation to Victory Hall and Tennis Courts (image c. Digital Globe 2017).

4 CONCLUSIONS

While a small number of 19th or 20th Century ceramic sherds and evidence of dumped deposits from coal-fires was visible in the rear of the property (in addition to the glass bottle discussed in Section 3), no significant archaeological finds or features were noted in the cable trench. The trench is now complete and backfilled.

5 REFERENCES

- Bogdan and Bryce, N and I B D.** (1991) *Castles, manors and 'town houses' survey*, *Discovery Excav Scot*, 1991.
- Coventry, M.** (2001) *The castles of Scotland*. 3rd. Musselburgh.
- Greig, M.** (1994) [*Sites identified while checking aerial photographs and maps held by GRC, or as the result of an aerial reconnaissance programme*], *Discovery Excav Scot*, 1994.
- Ralston, I.** (1984) *Notes on the archaeology of Kincardine and Deeside District*, *The Deeside Fld*, 2nd, vol. 18, 1984.
- Shepherd, I A G.** (1976) *Birse: Waterside farm: hut circles*, *Discovery Excav Scot*, 1976.
- Simpson, W D.** (1929) *The early castles of Mar. (First paper)*, *Proc Soc Antiq Scot*, vol. 63, 1928-9.
- Simpson, W D.** (1949) *The earldom of Mar: being a sequel to "The Province of Mar"*, 1943. Aberdeen.

Tranter, N. (1962-70) *The fortified house in Scotland*. Edinburgh.

6 ACKNOWLEDGEMENTS

Thanks to Pauline Selbie and Brian Howell, SSE for initiating this project, and to Caroline Palmer, Aberdeenshire Council Archaeology Service for her advice during this work.

APPENDIX 1: PHOTOS

PHOTO ID	DIRECTION FACING	COMMENTS
DSC2991	S	Trench excavation commencing
DSC2993	W	Section of trench along S edge of car park with modern timber post
DSC2994	NW	Trench in progress
DSC2995	NW	Trench in progress
DSC2998	SW	Section of trench in car park
DSC3003	SW	Section of trench in car park, near mid-point
DSC3006	NW	Trench in progress
DSC3007	SE	Trench in progress
DSC3013	SW	Section of trench in car park
DSC3015	S	General view of trench in car park area
DSC3017	SE	Trench in progress
DSC3019	SW	Trench in progress
DSC3021	SW	Box trench underway for tie-in to existing electrical service cable
DSC3022	SW	Box trench underway for tie-in to existing electrical service cable
DSC3026	SE	Box trench completed
DSC3029	W	Trench bypassing wall at rear of hall and continuing towards terminus
DSC3030	NW	Trench progressing towards terminus
DSC3031	SE	Trench progressing towards terminus
DSC3032	NE	Section of trench towards terminus with modern burnt earth deposit
DSC3034	NW	Trench nearing completion (grey box beside building)
DSC3036	W	Section of box trench near terminus showing signs of modern levelling for former putting green
DSC3039	SSE	Trench completed

APPENDIX 2: Archaeological and historical sites within 1km of the proposed site (HES and Aberdeenshire HER online)

Dataset	Dataset UID	Name	Details
RCAHMS	NO 52800 98600	ABOYNE, GENERAL	TOWN (PERIOD UNASSIGNED)
RCAHMS	NO 52500 99300	MAINS OF ABOYNE	ENCLOSURE (PERIOD UNASSIGNED). ALTNAME = ABOYNE CASTLE POLICIES
RCAHMS	NO 52454 99409	ABOYNE CASTLE, HOME FARM	FARMHOUSE (PERIOD UNASSIGNED), FARMSTEAD (PERIOD UNASSIGNED). ALTNAME = CASTLE OF ABOYNE, ABOYNE CASTLE POLICIES
RCAHMS	NO 52556 99371	ABOYNE CASTLE, MAINS OF ABOYNE	FARMHOUSE (PERIOD UNASSIGNED), FARMSTEAD (PERIOD UNASSIGNED). ALTNAME = CASTLE OF ABOYNE, ABOYNE CASTLE POLICIES
RCAHMS	NO 53217 99012	ABOYNE CASTLE, GOFL ROAD, EAST MAINS	FARMHOUSE (PERIOD UNASSIGNED), FARMSTEAD (PERIOD UNASSIGNED). ALTNAME = CASTLE OF ABOYNE, ABOYNE CASTLE POLICIES
RCAHMS	NO 52036 99198	ABOYNE CASTLE, WEST LODGE	LODGE (PERIOD UNASSIGNED). ALTNAME = CASTLE OF ABOYNE, ABOYNE CASTLE POLICIES
RCAHMS	NO 53060 99030	ABOYNE CASTLE, EAST LODGE	LODGE (PERIOD UNASSIGNED). ALTNAME = CASTLE OF ABOYNE, ABOYNE CASTLE POLICIES
RCAHMS	NO 52945 99302	ABOYNE CASTLE, ICEHOUSE	ICEHOUSE (PERIOD UNASSIGNED). ALTNAME = CASTLE OF ABOYNE, ABOYNE CASTLE POLICIES, ALLACH WOOD
RCAHMS	NO 52055 99322	ABOYNE CASTLE, GARDEN HOUSE	GARDEN HOUSE (PERIOD UNASSIGNED), WALLED GARDEN (PERIOD UNASSIGNED). ALTNAME = CASTLE OF ABOYNE, ABOYNE CASTLE POLICIES
RCAHMS	NO 52766 99234	ABOYNE CASTLE, ALLACH BRIDGE	BRIDGE (PERIOD UNASSIGNED). ALTNAME = CASTLE OF ABOYNE, ABOYNE CASTLE POLICIES
RCAHMS	NO 51880 98530	ABOYNE ACADEMY	SCHOOL (PERIOD UNASSIGNED)
RCAHMS	NO 52520 98380	ABOYNE ACADEMY, ANNEXE	SCHOOL (PERIOD UNASSIGNED). ALTNAME = ABOYNE FEMALE SCHOOL
RCAHMS	NO 53000 98620	ABOYNE STATION, GOODS SHED	RAILWAY STATION (19-20TH CENTURY)
RCAHMS	NO 52620 98580	ABOYNE, BALLATER ROAD, TIGH-NA-GEALD	HOUSE (19-20TH CENTURY)

RCAHMS	NO 52810 98430	ABOYNE, CHARLESTOWN ROAD, POST OFFICE	POST OFFICE (19-20TH CENTURY)
RCAHMS	NO 52680 98210	ABOYNE, CHARLESTOWN ROAD, SCHOOLHOUSE	HOUSE (PERIOD UNASSIGNED), SCHOOL (PERIOD UNASSIGNED). ALTNAME = ABOYNE PUBLIC SCHOOL
RCAHMS	NO 52280 98410	ABOYNE, ST EUNAN'S ROAD, GENERAL	GENERAL VIEW
RCAHMS	NO 52400 98620	ABOYNE, BALLATER ROAD, THE NEUK	HOUSE (20TH CENTURY)
RCAHMS	NO 52600 98500	ABOYNE, CAMDEN COTTAGE	COTTAGE (PERIOD UNASSIGNED)
RCAHMS	NO 52332 97960	ABOYNE, BRIDGEVIEW ROAD, BRIDGEND COTTAGE	TOLL HOUSE (POST MEDIEVAL). ALTNAME = BRIDGEEND COTTAGE, INCLUDING GATES, GATEPIERS AND BOUNDARY WALL
RCAHMS	NO 52482 98317	ABOYNE, HUNTLY ROAD, ST MACHAR'S PARISH CHURCH	CHURCH (PERIOD UNASSIGNED), GATE(S) (PERIOD UNASSIGNED), GATE PIER(S) (PERIOD UNASSIGNED). ALTNAME = ABOYNE AND DINNET PARISH CHURCH
RCAHMS	NO 52849 98544	ABOYNE, CHARLESTOWN ROAD, HUNTLY ARMS HOTEL	HOTEL (PERIOD UNASSIGNED)
RCAHMS	NO 52016 98556	ABOYNE, BALLATER ROAD, ST THOMAS' EPISCOPAL CHURCH	CHURCH (PERIOD UNASSIGNED). ALTNAME = ABOYNE, BALLATER ROAD, ST THOMAS'S EPISCOPAL CHURCH, BRIDGEVIEW RD, OLD TOLLHOUSE RD
RCAHMS	NO 52394 98587	ABOYNE, BALLATER ROAD, THE COTTAGE	COTTAGE (PERIOD UNASSIGNED)
RCAHMS	NO 52493 98566	ABOYNE, BALLATER ROAD, HAZLEHURST LODGE	HOUSE (19TH CENTURY)
RCAHMS	NO 52528 98528	ABOYNE, BALLATER ROAD, ST MARGARET'S ROMAN CATHOLIC CHURCH	CHURCH (PERIOD UNASSIGNED), GATE(S) (PERIOD UNASSIGNED), GATE PIER(S) (PERIOD UNASSIGNED). ALTNAME = GORDON CRESCENT, ROMAN CATHOLIC CHURCH OF SAINT MARGARET
RCAHMS	NO 52121 98626	ABOYNE, BALLATER ROAD, STRUAN HALL	HOUSE (19TH CENTURY)
RCAHMS	NO 52766 98649	ABOYNE, BALLATER ROAD, WAR MEMORIAL BUILDINGS	HALL (20TH CENTURY), WAR MEMORIAL(S) (20TH CENTURY). ALTNAME = ABOYNE AND GLEN TANAR WAR MEMORIAL SHRINE, VICTORY HALL
RCAHMS	NO 52349 98015	ABOYNE, BRIDGEVIEW ROAD, DESSMUIR	HOUSE (19TH CENTURY)

RCAHMS	NO 52244 98102	ABOYNE, BRIDGEVIEW ROAD, IVY COTTAGE	COTTAGE (PERIOD UNASSIGNED)
RCAHMS	NO 52177 98165	ABOYNE, RHU-NA-HAVEN ROAD, LADYWOOD LODGE	HOUSE (20TH CENTURY). ALTNAME = BRIDGEVIEW ROAD
RCAHMS	NO 52496 98214	ABOYNE, CHARLESTOWN ROAD, BIRSE LODGE HOTEL	DOWER HOUSE (19TH CENTURY), HOTEL (20TH CENTURY). ALTNAME = HUNTLY LODGE
RCAHMS	NO 52791 98370	ABOYNE, CHARLESTOWN ROAD, MASONIC HALL	MASONIC HALL (PERIOD UNASSIGNED). ALTNAME = ABOYNE OLD FREE KIRK
RCAHMS	NO 52103 97984	ABOYNE, THE GLEBE HOUSE	MANSE (PERIOD UNASSIGNED). ALTNAME = FORMER ABOYNE MANSE
RCAHMS	NO 52115 98473	ABOYNE, ST EUNAN'S ROAD, ST LESMO TOWER	HOUSE (20TH CENTURY)
RCAHMS	NO 52980 98680	ABOYNE, STATION SQUARE, CHARLESTOWN COTTAGES	COTTAGE (PERIOD UNASSIGNED)
RCAHMS	NO 52844 98493	ABOYNE, CHARLESTOWN ROAD, HUNTLY ARMS HOTEL, GAZEBO	GAZEBO (PERIOD UNASSIGNED)
RCAHMS	NO 52700 98400	ABOYNE, CHARLESTOWN GREEN	GREEN (PERIOD UNASSIGNED). ALTNAME = CHARLESTOWN OF ABOYNE
RCAHMS	NO 53450 97980	WATERSIDE	FARMSTEAD (PERIOD UNASSIGNED)
RCAHMS	NO 52982 98626	ABOYNE, STATION SQUARE, FORMER STATION	RAILWAY STATION (19-20TH CENTURY), SHOP(S) (PERIOD UNASSIGNED). ALTNAME = FORMER STATION BUILDINGS
RCAHMS	NO 52169 98016	ABOYNE, THE GLEBE HOUSE, WALLED GARDEN	GARDEN (PERIOD UNASSIGNED)
RCAHMS	NO 52898 98751	ABOYNE CASTLE, SOUTH LODGE	LODGE (PERIOD UNASSIGNED). ALTNAME = CHARLESTON LODGE, ABOYNE CASTLE POLICES
RCAHMS	NO 52042 99307	ABOYNE CASTLE, WALLED GARDEN, WEE HOUSE	GARDEN HOUSE (PERIOD UNASSIGNED), WALLED GARDEN (PERIOD UNASSIGNED). ALTNAME = CASTLE OF ABOYNE, ABOYNE CASTLE POLICES
RCAHMS	NO 53076 98796	ABOYNE, BRIDGE OVER TARLAND BURN	BRIDGE (PERIOD UNASSIGNED)

RCAHMS	NO 52856 98707	ABOYNE, BALLATER ROAD, WOODEND	LODGE (19TH CENTURY). ALTNAME = BYDAND, FORMER ABOYNE CASTLE SOUTH LODGE
RCAHMS	NO 52556 97692	BIRSEMORE, BIRSE BRAE	VILLA (19TH CENTURY)
RCAHMS	NO 52582 97708	BIRSEMORE, CAIRN ROBIN	HOUSE (PERIOD UNASSIGNED), OUTBUILDING (PERIOD UNASSIGNED), WALL (PERIOD UNASSIGNED). ALTNAME = CAIRNROBIN
RCAHMS	NO 52241 98107	ABOYNE, BRIDGEVIEW ROAD, IVY COTTAGE NORTH	COTTAGE (PERIOD UNASSIGNED)
RCAHMS	NO 52441 98331	ABOYNE, HUNTLY ROAD, ST MACHAR'S PARISH CHURCH, CHURCH HALL	CHURCH HALL (PERIOD UNASSIGNED)
RCAHMS	NO 52474 98305	ABOYNE, HUNTLY ROAD, ST MACHAR'S PARISH CHURCH, CHURCHYARD	BURIAL GROUND (PERIOD UNASSIGNED), CHURCHYARD (PERIOD UNASSIGNED)
RCAHMS	NO 52021 98531	ABOYNE, BALLATER ROAD, ST THOMAS'S EPISCOPAL CHURCH, BOILER HOUSE	BOILER HOUSE (PERIOD UNASSIGNED). ALTNAME = ABOYNE, BALLATER ROAD, ST THOMAS'S EPISCOPAL CHURCH, INCLUDING BOILER HOUSE, LYCH GATE, GATEPIERS AND BOUNDARY WALLS, BRIDGEVIEW RD, OLD TOLLHOUSE RD
RCAHMS	NO 52073 98586	ABOYNE, BALLATER ROAD, ST THOMAS'S EPISCOPAL CHURCH, LYCH GATE	GATE PIER(S) (PERIOD UNASSIGNED), LYCH GATE (19-20TH CENTURY). ALTNAME = ABOYNE, BALLATER ROAD, ST THOMAS'S EPISCOPAL CHURCH, INCLUDING BOILER HOUSE, LYCH GATE, GATEPIERS AND BOUNDARY WALLS, BRIDGEVIEW RD, OLD TOLLHOUSE RD
RCAHMS	NO 52525 98520	ABOYNE, BALLATER ROAD, ST MARGARET'S ROMAN CATHOLIC CHURCH, PRESBYTERY	PRESBYTERY (POST MEDIEVAL). ALTNAME = ROMAN CATHOLIC CHURCH OF SAINT MARGARET
RCAHMS	NO 52515 98511	ABOYNE, BALLATER ROAD, ST MARGARET'S ROMAN CATHOLIC CHURCH, CARRIAGE HOUSE	CARRIAGE HOUSE (PERIOD UNASSIGNED). ALTNAME = ROMAN CATHOLIC CHURCH OF SAINT MARGARET, ANCILLARY STRUCTURE
RCAHMS	NO 53611 98611	ABOYNE, BELLWOOD ROAD, HOSPITAL	HOSPITAL (PERIOD UNASSIGNED)
RCAHMS	NO 51806 99014	TARLAND ROAD	NO CLASS (EVENT)

RCAHMS	NO 53220 99053	ABOYNE, GOLF ROAD, DRILL HALL	DRILL HALL (FIRST WORLD WAR), DRILL HALL (20TH CENTURY)
RCAHMS	NO 52665 98390	ABOYNE, ABOYNE GOLF CLUB	GOLF COURSE (19TH CENTURY)
RCAHMS	NO 52400 99040	IMAGE WOOD	FOUR POSTER STONE CIRCLE (BRONZE AGE)(POSSIBLE). ALTNAME = ABOYNE
RCAHMS	NO 52000 98000	ABOYNE	BEAD
RCAHMS	NO 52000 98000	ABOYNE	POLISHED AXEHEAD (STONE)
RCAHMS	NO 52000 98000	ABOYNE	CARVED STONE BALL
RCAHMS	NO 53000 98000	ST MALRUBH'S WELL	WELL (PERIOD UNASSIGNED)
RCAHMS	NO 52000 98000	ABOYNE	BARBED AND TANGED ARROWHEAD (FLINT)
RCAHMS	NO 52000 98000	ABOYNE	AXEHEAD (STONE)
RCAHMS	NO 52780 98610	ABOYNE TOLBOOTH	TOLBOOTH (PERIOD UNASSIGNED)
RCAHMS	NO 53300 98000	WATERSIDE FARM	HUT CIRCLE(S) (PREHISTORIC)
RCAHMS	NO 53400 98000	WATERSIDE FARM	QUERN
RCAHMS	NO 53000 98620	ABOYNE STATION	RAILWAY STATION (19-20TH CENTURY)
RCAHMS	NO 52000 98000	ABOYNE	ARMLET(S) (BRONZE)
RCAHMS	NO 52370 97935	ABOYNE, BRIDGEVIEW ROAD, ABOYNE BRIDGE	ROAD BRIDGE (PERIOD UNASSIGNED). ALTNAME = RIVER DEE, ABOYNE, DEE BRIDGE
RCAHMS	NO 52400 98990	ABOYNE CASTLE	CROSS SLAB (EARLY MEDIEVAL)
RCAHMS	NO 52000 98000	ABOYNE	CARVED STONE BALL
RCAHMS	NO 52960 98730	ABOYNE, BALLATER ROAD, EAST TOLL	TOLL HOUSE (POST MEDIEVAL)
RCAHMS	NO 53152 99109	EAST MAINS OF ABOYNE	LINEAR FEATURE(S) (PERIOD UNASSIGNED), PALISADED ENCLOSURE (PERIOD UNASSIGNED), RIG AND FURROW (MEDIEVAL). ALTNAME = ABOYNE, ABOYNE GOLF COURSE, 'TIMBER HOUSE SITE', HEOGAN
RCAHMS	NO 52000 98000	ABOYNE	POLISHED AXEHEAD (STONE)

RCAHMS	NO 52636 99558	ABOYNE CASTLE	CASTLE (17TH CENTURY), COUNTRY HOUSE (PERIOD UNASSIGNED), HOSPITAL (FIRST WORLD WAR), MOTTE (MEDIEVAL). ALTNAME = CASTLE OF ABOYNE, ABOYNE CASTLE POLICIES, ABOYNE CASTLE AUXILIARY HOSPITAL
RCAHMS	NO 52000 98000	ABOYNE	FLAT AXEHEAD (BRONZE)
RCAHMS	NO 52000 98000	ABOYNE	POLISHED AXEHEAD (STONE)
RCAHMS	NO 52000 98000	ABOYNE	AXEHEAD (SANDSTONE)
RCAHMS	NO 52000 98000	CHARLESTON OF ABOYNE	BURGH (MEDIEVAL). ALTNAME = ABOYNE
RCAHMS	NO 53430 98810	ABOYNE, FORMASTON PARK	PILLBOX (20TH CENTURY). ALTNAME = ABOYNE
RCAHMS	NO 52300 99100	MAINS OF ABOYNE	RING DITCH(S) (PERIOD UNASSIGNED), SOUTERRAIN(S) (PREHISTORIC)
HERABER	NO59NW0051	ALLACH WOOD	
HERABER	NO59NW0005	ABOYNE CASTLE	
HERABER	NO59NW0018	WATERSIDE FARM	
HERABER	NO59NW0021	ABOYNE BRIDGE	
HERABER	NO59NW0022	TOLLHOUSE, ABOYNE	
HERABER	NO59NW0025	EAST MAINS OF ABOYNE	
HERABER	NO59NW0028	MAINS OF ABOYNE	
HERABER	NO59NW0040	ABOYNE PARISH CHURCH	
HERABER	NO59NW0049	MAINS OF ABOYNE	
HERABER	NO59NW0057	BIRSEMORE	
HERABER	NO59NW0053	VICTORY HALL, ABOYNE WAR ME...	
HERABER	NO59NW0056	ABOYNE BUSINESS CENTRE	
HERABER	NO59NW0055	SOUTH FREE CHURCH, ABOYNE	
HERABER	NO59NW0054	BIRSE LODGE	
HERABER	NO59NW0060	ABOYNE MILL	
HERABER	NO59NW0058	ABOYNE CASTLE	
HERABER	NO59NW0071	MAINS OF ABOYNE	
HERABER	NO59NW0078	TARLAND ROAD, ABOYNE	
HERABER	NO59NW0001	ABOYNE STONE CIRCLE	
HERABER	NO49NW0009	KINORD CROSS	
HERABER	NO59NW0004	ABOYNE	

HERABER	NO59NW0006	ABOYNE	
HERABER	NO59NW0007	ABOYNE	
HERABER	NO59NW0008	ABOYNE	
HERABER	NO59NW0009	ABOYNE	
HERABER	NO59NW0010	ABOYNE	
HERABER	NO59NW0011	ABOYNE	
HERABER	NO59NW0012	ABOYNE	
HERABER	NO59NW0013	ABOYNE	
HERABER	NO59NW0015	FORMASTON STONE	
HERABER	NO59NW0019	WATERSIDE FARM	
HERABER	NO59NW0020	ABOYNE STATION	
HERABER	NO59NW0044	ST MALRUBH'S WELL	
HERABER	NO59NW0045	ABOYNE TOLBOOTH	
HERABER	NO59NW0048	ABOYNE	
HERABER	NO59NW0079	GOLF ROAD, ABOYNE	
HERABER	NO59NW0080	ABOYNE	
HERABER	NO59NW0073	ABOYNE WAR MEMORIAL	

APPENDIX 3 MAPS

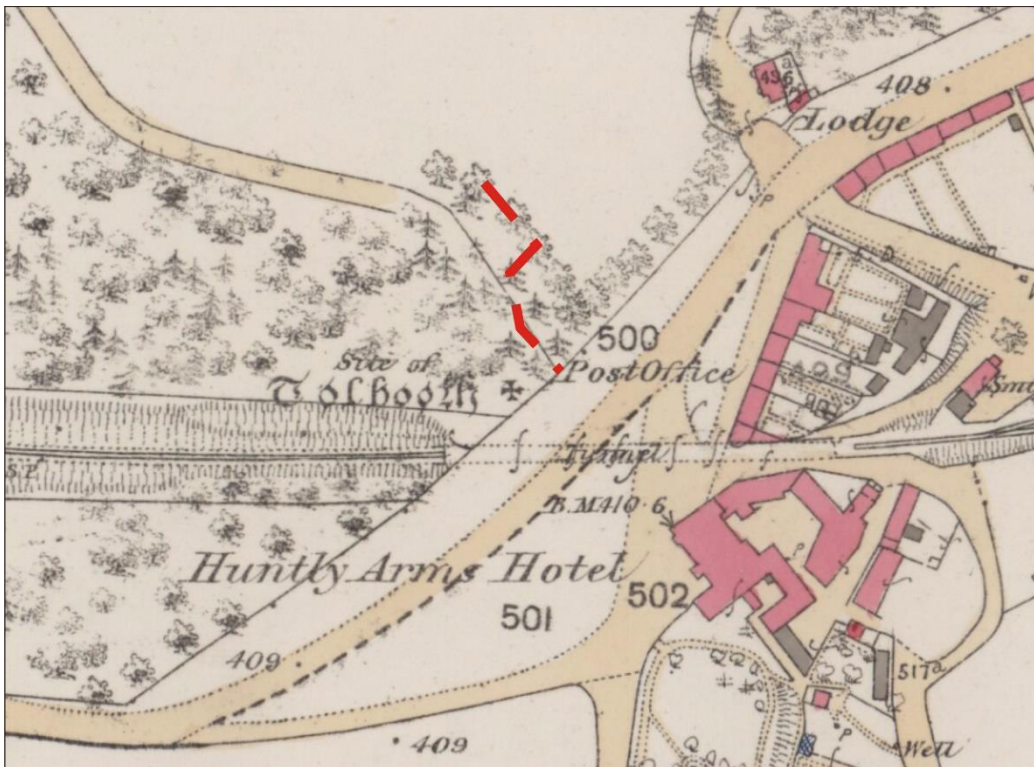


Illustration 4: First Edition OS map showing site outline in red (copyright National Library of Scotland). Aberdeen Sheet LXXXII.14 (Aboyne and Glentanner) Survey date: 1867 Publication date: 1870

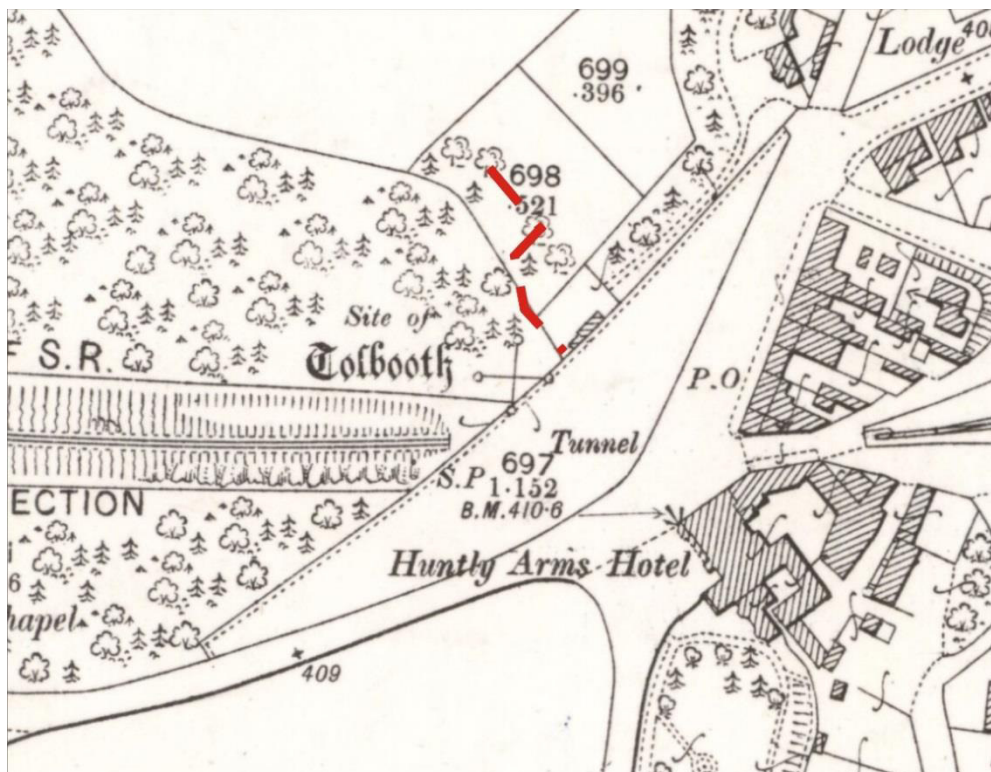


Illustration 5: Second Edition OS map showing site outline in red (copyright National Library of Scotland) Aberdeenshire 082.14 (includes: Aboyne and Glen Tanar; Birse)



_DSC2991.JPG



_DSC2993.JPG



_DSC2994.JPG



_DSC2995.JPG



_DSC2998.JPG



_DSC3003.JPG



_DSC3006.JPG



_DSC3007.JPG



_DSC3013.JPG



_DSC3015.JPG



_DSC3017.JPG



_DSC3019.JPG



_DSC3021.JPG



_DSC3022.JPG



_DSC3026.JPG



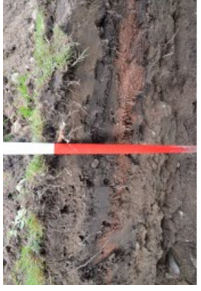
_DSC3029.JPG



_DSC3030.JPG



_DSC3031.JPG



_DSC3032.JPG



_DSC3034.JPG



_DSC3036.JPG



_DSC3039.JPG