

Whin Cottage, Ardoe, AB12 5XT
Photographic survey
Aberdeenshire Council planning reference APP/2017/1595

National Grid Reference: NJ 90683 02207

Parish: Banchory-Devenick

Height OD: 30-35m

HES ref no: NJ90SW 145

Written and researched by:

Cameron Archaeology

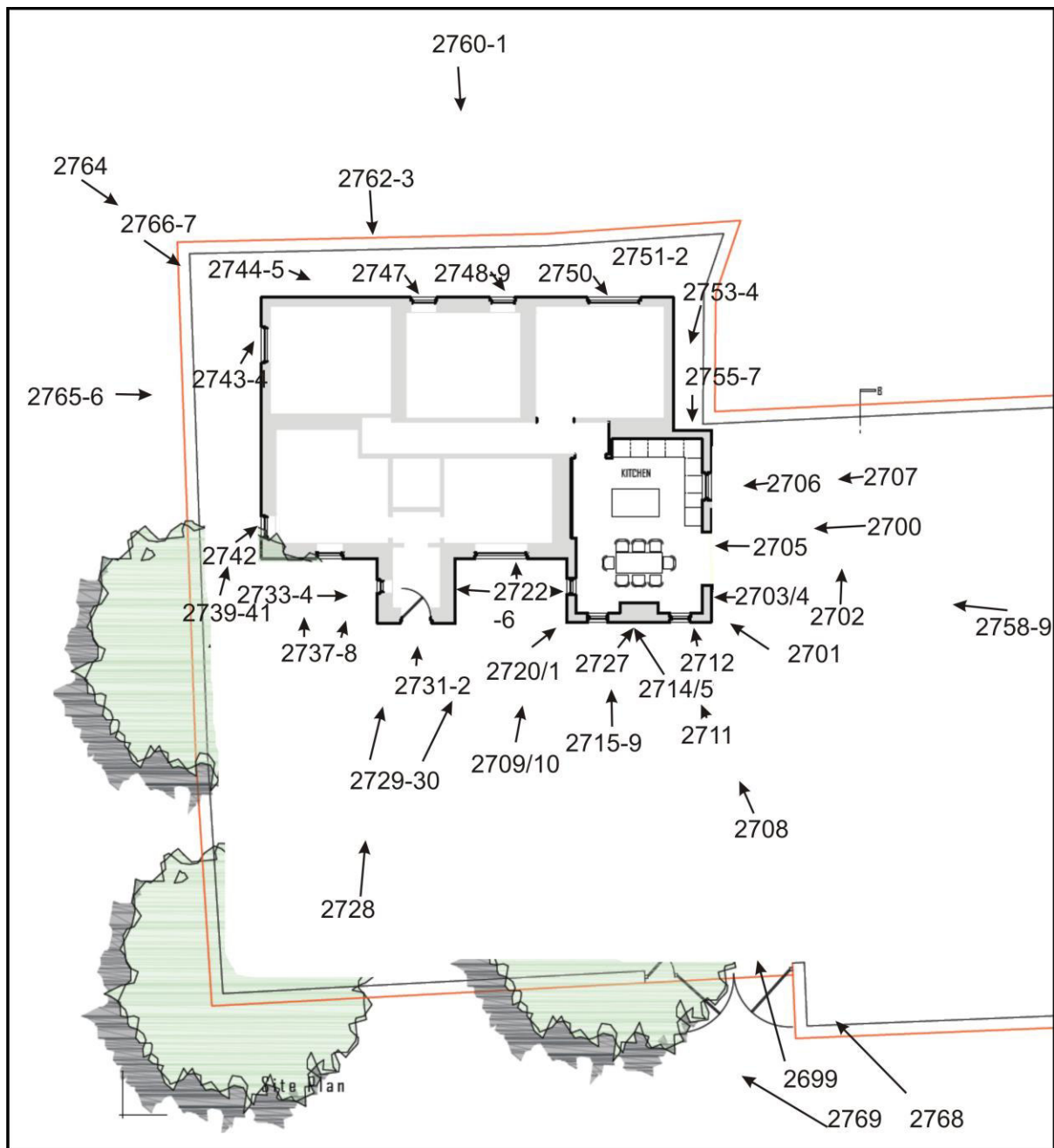
Commissioning client:

Kevin Duguid
Fitzgerald Associates

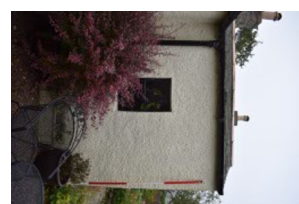
Contractor:

Cameron Archaeology
45 View Terrace
Aberdeen
AB25 2RS
01224 643020
07581 181057
cameronarch@btinternet.com
www.cameronarchaeology.com
Company registration no 372223 (Scotland)
VAT registration no 990 4373 00

Date: 26 September 2017



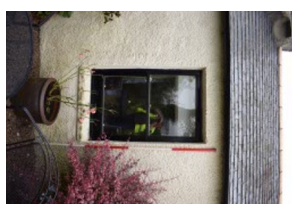
Plan of photographs



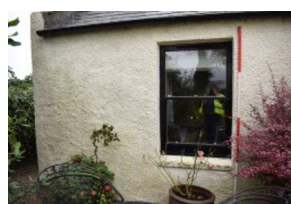
DSC_2734.JPG



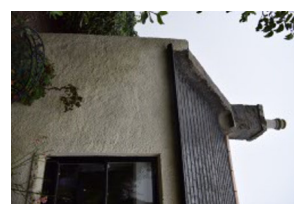
DSC_2735.JPG



DSC_2736.JPG



DSC_2737.JPG



DSC_2738.JPG



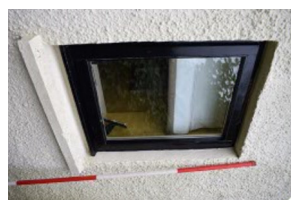
DSC_2739.JPG



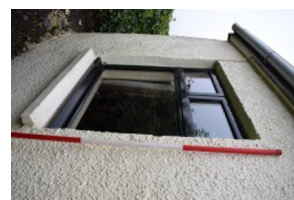
DSC_2740.JPG



DSC_2741.JPG



DSC_2742.JPG



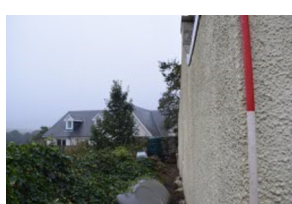
DSC_2743.JPG



DSC_2744.JPG



DSC_2745.JPG



DSC_2746.JPG



DSC_2747.JPG



DSC_2748.JPG



DSC_2749.JPG



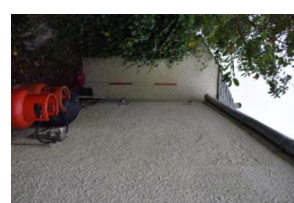
DSC_2750.JPG



DSC_2751.JPG



DSC_2752.JPG



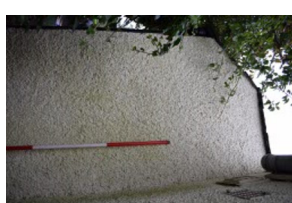
DSC_2753.JPG



DSC_2754.JPG



DSC_2755.JPG



DSC_2756.JPG



DSC_2757.JPG



DSC_2758.JPG



DSC_2759.JPG



DSC_2760.JPG



DSC_2761.JPG



DSC_2762.JPG



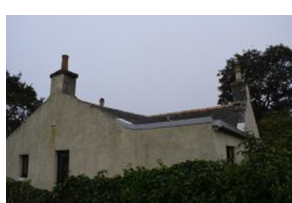
DSC_2763.JPG



DSC_2764.JPG



DSC_2765.JPG



DSC_2766.JPG



DSC_2767.JPG



DSC_2768.JPG



DSC_2769.JPG