

**Inverharroch, Lower Cabrach, Huntly,  
Moray, AB54 4EU  
Data Structure report**



**Alison Cameron  
Cameron Archaeology Ltd  
18 October 2018**

## CONTENTS

1	BACKGROUND .....	4
2	ARCHAEOLOGICAL BACKGROUND .....	5
3	THE EVALUATION .....	6
3.1	Trench 1 .....	7
3.2	Trench 2 .....	8
3.3	Trench 3 .....	9
3.4	Trench 4 .....	9
3.5	Trench 5 .....	10
3.6	Trench 6 .....	12
3.7	Trench 7 .....	14
3.8	Trench 8 .....	15
3.9	Trench 9 .....	16
4	CONCLUSIONS.....	17
5	REFERENCES .....	17
6	ACKNOWLEDGEMENTS .....	17
	APPENDIX 1 FINDS .....	18
	APPENDIX 2 CONTEXTS .....	19
	APPENDIX 3 PHOTOGRAPHS .....	20

## ILLUSTRATIONS

COVER top Trench 7 cobbled surfaces; facing NE. Bottom school class in NW wing; facing SW

Illus 1	Location plan ( <i>Contains Ordnance Survey data © Crown copyright and database right 2018</i> ) .....	4
Illus 2	Site plan showing proposed development ( <i>copyright The Cabrach Trust</i> ).....	5
Illus 3	Location of Inverharroch from A941 showing it atop a man-made platform; facing E ..	6
Illus 4	Trenches 1-4 location (from copyright The Cabrach Trust) .....	7
Illus 5	Trench 1; facing S.....	8
Illus 6	Trench 2; facing SW .....	8
Illus 7	Trench 3; facing SE .....	9
Illus 8	Trench 4; facing SW .....	9
Illus 9	Trenches 5-9 locations and main features (from copyright The Cabrach Trust) .....	10
Illus 10	Trench 5 wall foundation 504 (foreground), cobbles 506 (top); facing SE .....	11
Illus 11	Trench 5 fused sand, glass and pottery under cobbles 506; facing NE .....	11
Illus 12	Volunteers uncovering cobbles in Trench 6; facing NW .....	12
Illus 13	Cobbles 604 arranged around concrete plinth 605; facing NE .....	13
Illus 14	Wall foundation 601 for animal feeder; facing NW .....	13
Illus 15	Mum and son uncovering post socket in concrete 610; facing NE.....	14
Illus 16	Trench 7 cobbled surface 701 edges with larger flat stones; facing NE.....	14
Illus 17	Trench 7 wall foundation 703; facing SE .....	15

Illus 18 Trench 8 wall foundation 802 with possible patch of mortar floor 801 (top left); facing SE.....	16
Illus 19 Trench 9; facing W.....	16

**SUMMARY**

An archaeological evaluation took place under the direction of Ali Cameron on 21-23 September 2018. 45 volunteers took part in the dig including students, local volunteers and families – there were 17 people under 18 who attended. On the 21 September 40 school pupils with 4 teachers or parent helpers spent a day at the site making a total of 89 volunteers in total. Some attended for the weekend and some for a couple of hours or a half day.

Four trenches (Tr1-4) were excavated by machine under the supervision of Peter Bye-Jenson a few days prior to the evaluation.

The exterior trenches (Tr 1-4) were all dug through modern rubble and backfill; the courtyard had a sunken midden and so no archaeological features or finds were recovered which were earlier than the early 19<sup>th</sup>-century farm.

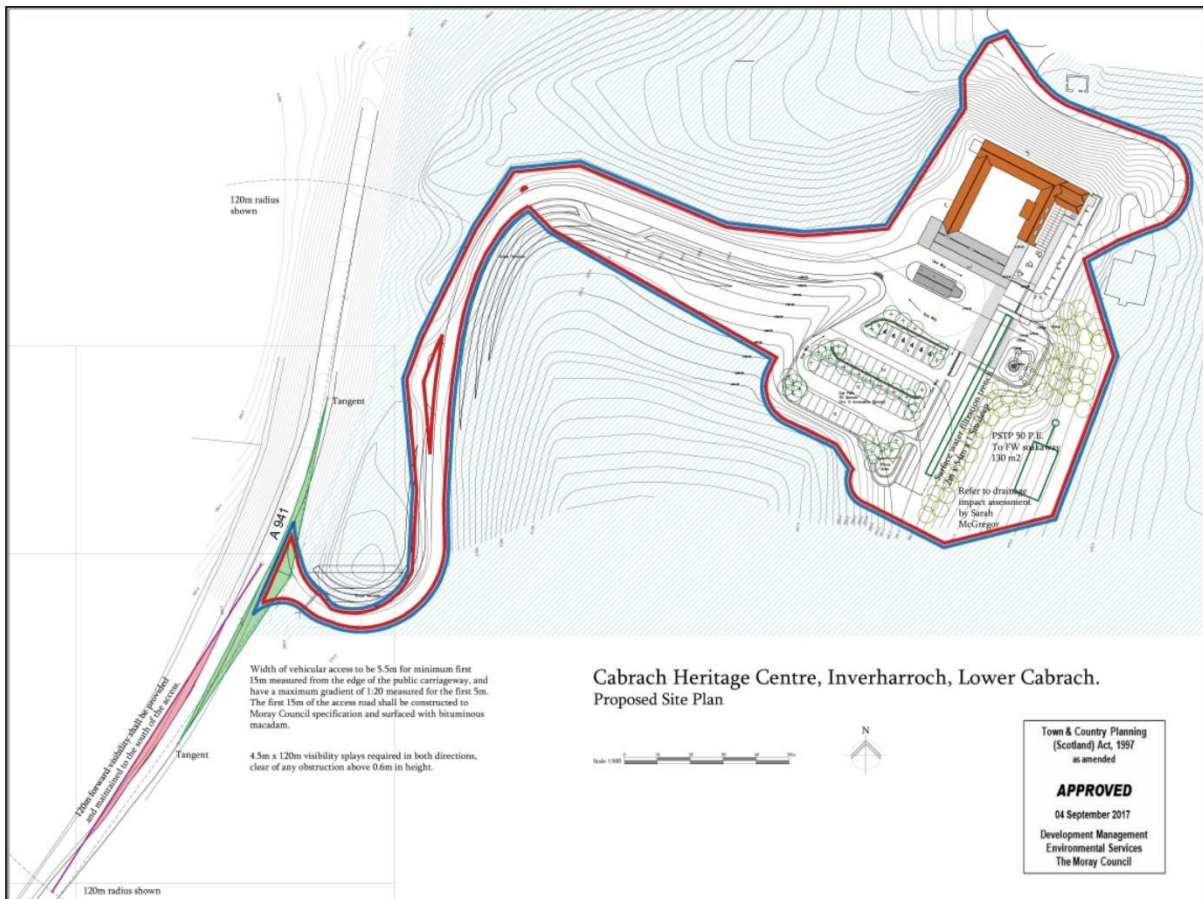
The interior trenches (Tr 5-9) all revealed evidence of the early 19<sup>th</sup>-century farm. Cobbled surfaces were recorded in areas where animals had been stalled. Animal feeders were recorded, both 19<sup>th</sup> and 20<sup>th</sup> century in date. Where it was possible to dig below these cobbled surfaces the finds were all dated to the mid 19<sup>th</sup> century or later and no earlier finds recovered from anywhere on the dig.

# 1 BACKGROUND

- 1.1 The site (Illus 1) is located at Inverharroch. It is centred on NGR NJ 3808 3110, at 260-290m OD in the parish of Cabrach.
- 1.2 The work was commissioned by LDN Architects for The Cabrach Trust.
- 1.3 All the archaeological work was carried out in the context of Scottish Planning Policy (SPP) Planning Advice Note (PAN 2/2011) and Historic Environment Scotland's Policy Statement (HESPS) which state that archaeological remains should be regarded as part of the environment to be protected and managed.



Illus 1 Location plan (Contains Ordnance Survey data © Crown copyright and database right 2018)



Illus 2 Site plan showing proposed development (*copyright The Cabrach Trust*)

## 2 ARCHAEOLOGICAL BACKGROUND

The Historic Environment Record (HER) and Canmore (HES) were consulted online within 1km of the proposed development.

2.1 Inverharroch (was Invercharrach) (SMR NJ33SE0065, HES NJ33SE 70) is a farmstead and farmhouse which are depicted on the First Edition OS map (Illus 3). It is constructed on the NE-SW axis with three and a half wings around a central courtyard and an entrance into the courtyard on the S end of the SE wing. There is a circular horse mill on the exterior of the SW side of the farm with the mill in the SW wing. The farmhouse is on the ESE side of the farm and this is extant and not included in the current planning application. They are sited on a high point in the landscape above the junction of the Deveron and the Black Water Burn and there is a ford across the burn just N of the farm. The farm is very similar on the 2<sup>nd</sup> Edition OS map with only one small extension added to the exterior of the SE wing.

On the NNE side of the farm there is also a smithy (possible) which is a small building with corrugated-iron roof (SMR NJ33SE0043); the door has been widened. It was latterly used as a cattle shed and is depicted on the 2nd edition OS map of 1888 (Illus 4).

In the field to the S of the steading there is also the Cabrach Royal Observer Corps post (SMR NJ33SE0063), opened in June 1960 and closed September 1991. The surface features remain as a concrete bunker, within a small rectangular compound, but internally the post has been stripped.

There is allegedly a motte either on this site or at Lesmurdie (SMR NJ33SE0013). During the project the man-made mound on which this farm site was discussed as being the site of a possible early medieval castle (Illus 4).

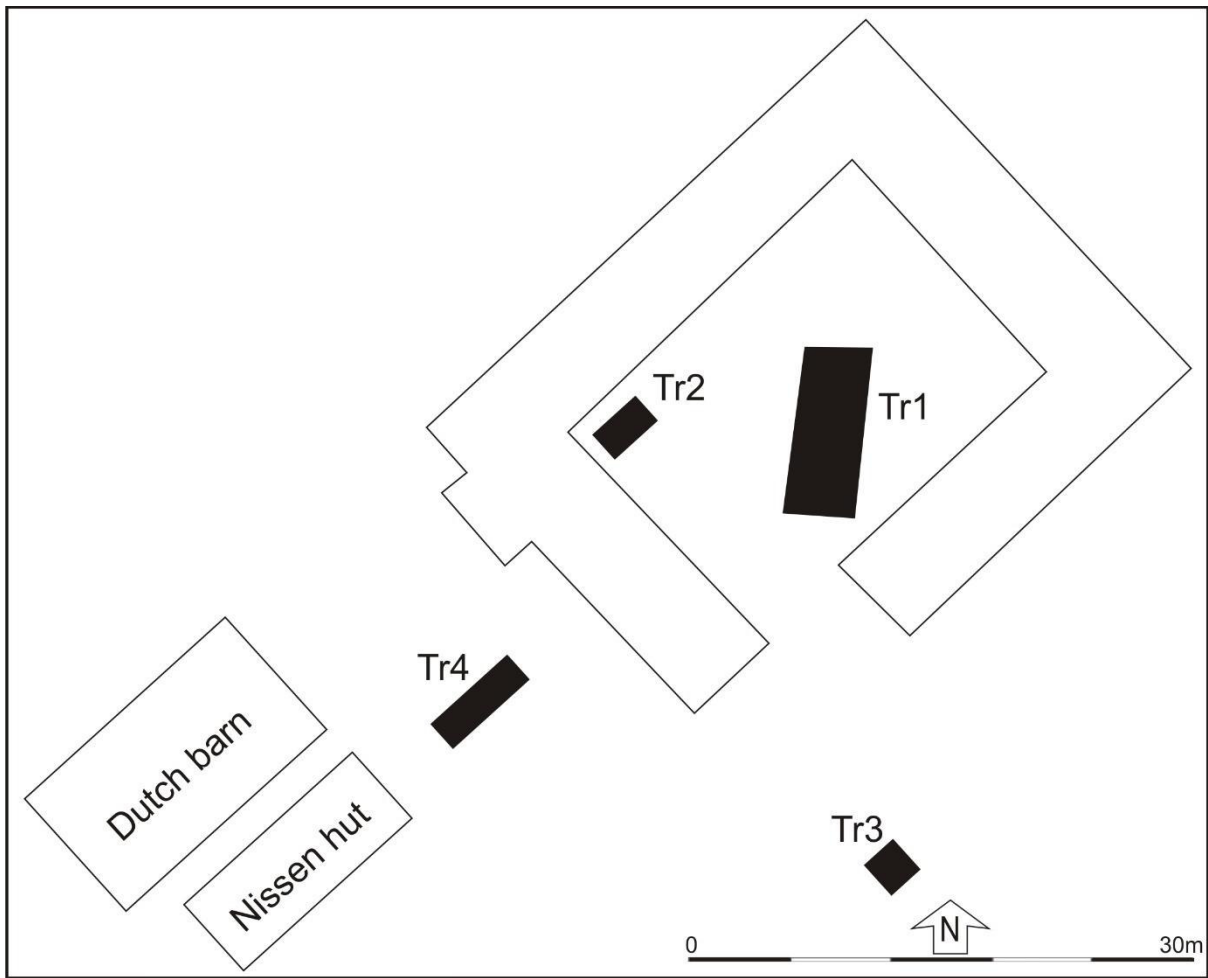


Illus 3 Location of Inverharroch from A941 showing it atop a man-made platform; facing E

### 3 THE EVALUATION

An archaeological evaluation took place under the direction of Ali Cameron on 21-23 September 2018. 45 volunteers took part in the dig including students, local volunteers and families – there were 17 people under 18 who attended. On the 21 September 40 school pupils with 4 teachers or parent helpers spent a day at the site making a total of 89 volunteers in total. Some attended for the weekend and some for a couple of hours or a half day.

Four trenches (Tr1-4) were excavated by machine under the supervision of Peter Bye-Jenson a few days prior to the evaluation.



Illus 4 Trenches 1-4 location (from copyright The Cabrach Trust)

### 3.1 Trench 1

Trench 1 was dug within the courtyard to target geophysical anomaly which appeared circular. The trench was dug down through 1.5m of loose gravel and dumped stone (Illus 5) and no archaeological features were identified. A large stone with socket was removed and photographed. The trench was too dangerous to enter and was therefore backfilled. It has been determined that there was a sunken midden within the courtyard (Colin MacKenzie pers com) and this was therefore the backfill of that sunken midden area.



Illus 5 Trench 1; facing S

### 3.2 Trench 2

Trench 2 was dug within the courtyard to target geophysical anomaly which appeared to be a possible wall/foundation. The trench was dug down through 1.2m of loose gravel and dumped stone (Illus 6) and no archaeological features were identified. The trench was too dangerous to enter and was therefore backfilled. It has been determined that there was a sunken midden within the courtyard (Colin MacKenzie pers com) and this was therefore the backfill of that sunken midden area.



Illus 6 Trench 2; facing SW



### 3.3 Trench 3

Trench 3 was located over a possible archaeological anomaly. The trench was full of modern dumped rubbish and was recorded and backfilled (Illus 7).



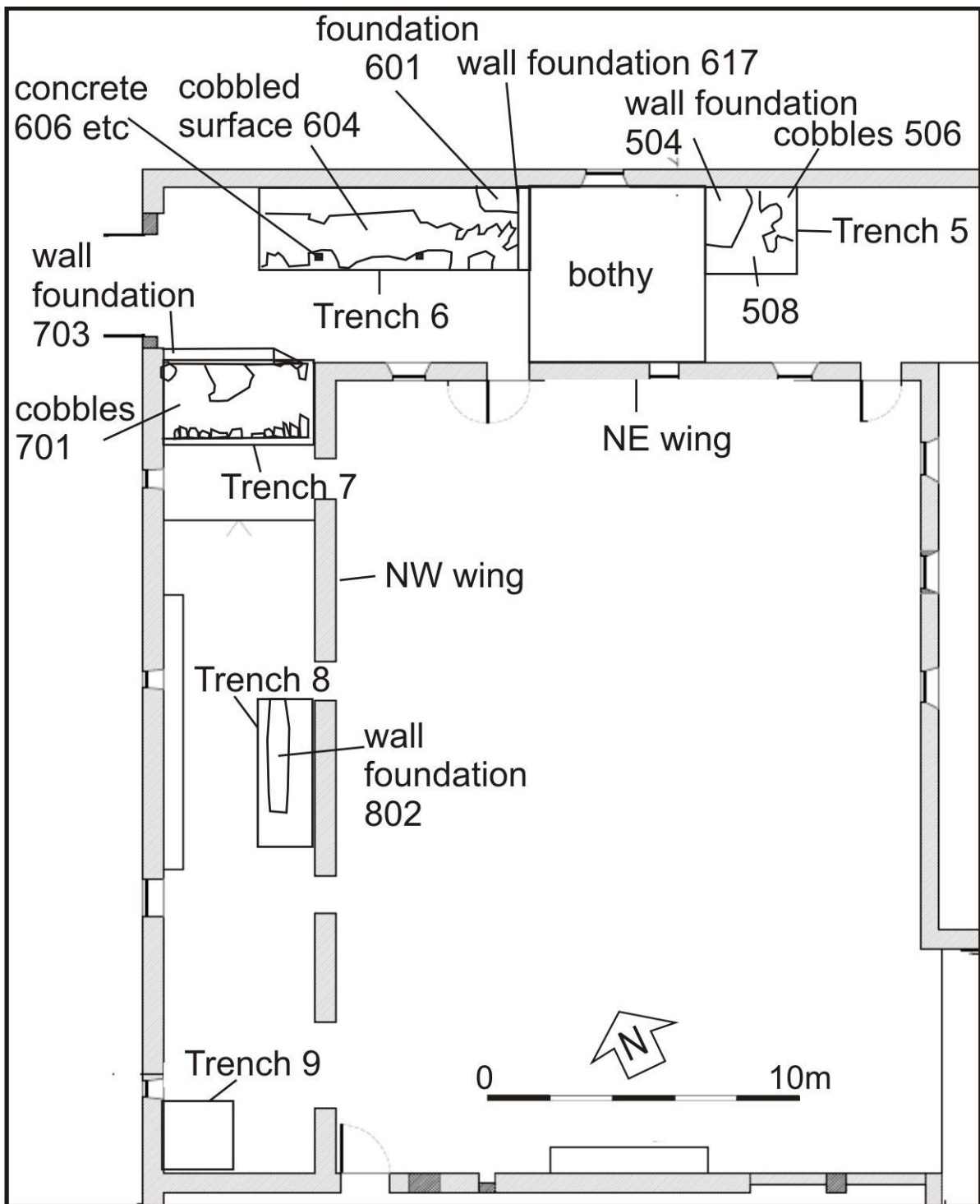
Illus 7 Trench 3; facing SE

### 3.4 Trench 4

Trench 4 was located over a possible archaeological anomaly. The trench was full of modern dumped rubbish and was recorded and backfilled (Illus 8).



Illus 8 Trench 4; facing SW



Illus 9 Trenches 5-9 locations and main features (from copyright The Cabrach Trust)

Trenches 5-9 were located within Building 1. There were relatively few locations for trenches as there are concrete floors. Trenches 5 and 6 were located on the NE side of the NE wing of the farmstead and Trenches 7-9 in the NW wing (Illus 9).

### 3.5 Trench 5

Trench 5 was located on the SE side of the bothy in the NE wing of the steading. There was a wall foundation 504 (Illus 10) which was the foundation for the SE wall of the bothy and waterwashed cobbles in the SE end of the trench. These has been disturbed and a section were removed; underneath was a rusty brown sand which had been subjected to heat and was mixed with glass and ceramics which had become fused (Illus 11). The bottle glass is probably mid 19<sup>th</sup> century in date (Colin MacKenzie pers com).



Illus 10 Trench 5 wall foundation 504 (foreground), cobbles 506 (top); facing SE



Illus 11 Trench 5 fused sand, glass and pottery under cobbles 506; facing NE

### 3.6 Trench 6

Trench 6 (Illus 12) was located in the NW end of the NE wing; as with Trench 5 there was a stone and mortar wall foundation (617) the NW wall of the former bothy and cobbled surface (604). There was a stone and mortar foundation in the NE corner and this was ascertained not to be an earlier wall but the foundation for a 19<sup>th</sup>-century animal feeder (Illus 14). Derek McBain (the tenant farmer who remembers the farm over the last 5 decades) remembered an animal feeder which may have been original to the building and which was removed when the room was modernized in the 1970s. Cattle pens were added into this area with concrete floors and metal posts (Illus 13) sunk into concrete 606, 609 and 612.



Illus 12 Volunteers uncovering cobbles in Trench 6; facing NW



Illus 13 Cobbles 604 arranged around concrete plinth 605; facing NE



Illus 14 Wall foundation 601 for animal feeder; facing NW



Illus 15 Mum and son uncovering post socket in concrete 610; facing NE

### 3.7 Trench 7

Trench 7 was located at the NE end of the NW wing of the farm. A wall foundation (Illus 17) was uncovered which had been the gable wall of the NW wing, dividing it from the NE wing. Cobbled surfaces (Illus 16) were recorded as well as post-holes. All were 19<sup>th</sup> century or later. The SW edge of the cobbled surface 701 was edged with larger stones.



Illus 16 Trench 7 cobbled surface 701 edges with larger flat stones; facing NE



Illus 17 Trench 7 wall foundation 703; facing SE

### 3.8 Trench 8

Trench 8 was located in the NW wing on the inner wall. A linear stone wall foundation was uncovered (802; Illus 18). It is likely that this was an internal fitting within the building such as a feeder. A small trench under the wall in this trench revealed that there are no substantial foundations below ground level; the buildings are built onto a large stone foundation but the ground level round about has been reduced leaving the foundations above ground level.



Illus 18 Trench 8 wall foundation 802 with possible patch of mortar floor 801 (top left); facing SE

### 3.9 Trench 9

Trench 9 was located in the SW corner of the NW wing to look at the relationship between the mains walls of the building to determine if this is the oldest section of the building. The soils were so compact that only 10m depth (Illus 19) was removed but no archaeological features were identified and finds were sparse and modern.



Illus 19 Trench 9; facing W



## 4 CONCLUSIONS

The dig was a great success with the number of volunteers and school pupils who all enjoyed the experience. The weekend was very wet and the inside digging was a bonus. The exterior trenches (Tr 1-4) were all dug through modern rubble and backfill; the courtyard had a sunken midden and so no archaeological features or finds were recovered which were earlier than the early 19<sup>th</sup>-century farm.

The interior trenches (Tr 5-9) all revealed evidence of the early 19<sup>th</sup>-century farm. Cobbled surfaces were recorded in areas where animals had been stalled. Animal feeders were recorded, both 19<sup>th</sup> and 20<sup>th</sup> century in date. Where it was possible to dig below these cobbled surfaces the finds were all dated to the mid 19<sup>th</sup> century or later and no earlier finds recovered from anywhere on the dig.

## 5 REFERENCES

**Bogdan and Bryce, N and I B D.** (1991) *'Castles, manors and 'town houses' survey', Discovery Excav Scot, 1991.*

**Gordon, A.** (1884) *'Notice of the antiquities of the parish of Cabrach, Banffshire', Proc Soc Antiq Scot, vol. 18, 1883-4.*

**NSA.** (1834-1845) *The new statistical account of Scotland by the ministers of the respective parishes under the superintendence of a committee of the society for the benefit of the sons and daughters of the clergy, 15v.* Edinburgh.

**Paul and Williamsons.** (1990) *Lesmurdie House, Lower Cabrach, by Huntly: {sale particulars}.* Aberdeen.

**Taylor, J.** (1914) *'The Cabrach', Trans Banffshire Fld Club, 1913-14.*

**Yeoman, P A.** (1988) *'Mottes in Northeast Scotland', Scot Archaeol Rev, vol. 5, 1988.*

## 6 ACKNOWLEDGEMENTS

Thanks to Peter McIlhenny and David Lawrie, LDN Architects, Sue Savege and Peter Bye-Jenson, Cabrach Trust, for initiating this project, to Derek McBain, tenant farmer who has knowledge of the farm over 5 decades and Colin MacKenzie, Trustee who advised on the history of the farm and to all the volunteers who helped with the project and everyone who visited the dig.

Cameron Archaeology  
45 View Terrace  
Aberdeen  
AB25 2RS  
01224 643020  
07581 181057  
cameronarch@btinternet.com  
www.cameronarchaeology.com  
Company registration no 372223 (Scotland)  
VAT registration no 990 4373 00

## APPENDIX 1 FINDS

SF no	Context	Description
1	Tr5 500	worked stone?
2	Tr5 500	2 glazed ceramic
3	Tr5 500	3 x glass in mortar
4	Tr5 500	27 coloured glass
5	Tr5 500	7 clear glass
6	Tr5 500	1 decorated mortar
7	Tr6 600	15 floor tile
8	Tr6 600	82 slate
9	Tr6 600	8 decorated stone
10	Tr6 600	6 wood
11	Tr6 600	19 clear glass
12	Tr6 600	3 glazed ceramic
13	Tr6 600	1 plastic
14	Tr6 600	4 iron nails, 1 iron bracket
15	Tr7 700	rat skull
16	Tr7 700	2 coal
17	Tr7 700	1 pot/brick?
18	Tr7 700	1 plastic
19	Tr7 700	1 iron nail
20	Tr7 700	1 frosted glass
21	Tr7 700	2 stones
22	Tr7 700	1 wood
23	Tr7 700	7 slate
24	Tr8 800	1 glazed ceramic
25	Tr8 800	1 wood
26	Tr8 800	2 wood
27	Tr8 800	2 clear glass
28	Tr8 800	8 slate
29	Tr9 900	6 slate
30	Tr9 900	2 wood
31	1 (schools)	2 glazed ceramic
32	1 (schools)	1 fitting
33	1 (schools)	4 wood
34	1 (schools)	4 iron nails, 1 iron bracket
35	1 (schools)	2 'sheep' nails
36	1 (schools)	1 plastic
37	1 (schools)	1 slate
38	1 (schools)	1 hose fitting
39	1 (schools)	4 coal
40	Tr6 616	wood from post-hole
41	Tr6 600	2 painted slate
42	Tr6 600	2 unglazed pot
43	Tr6 600	4 stones
44	Tr5 503	bottle glass

45	Tr5 503	glass in concrete/mortar
46	Tr5 503	glass in concrete/mortar
47	Tr5 503	concrete/mortar
48	Tr5 503	glass in concrete/mortar
49	Tr5 503	2 glazed ceramic
50	Tr5 503	1 cork
51	Tr5 503	1 decorated mortar
52	Tr5 503	79 bottle glass
53	Tr5 503	4 slate
54	Tr5 503	8 misc unident

## APPENDIX 2 CONTEXTS

Context no	Trench	Description
100	1	Loose rubble, stone and gravel
200	2	Loose rubble, stone and gravel
300	3	Modern rubbish, stone
400	4	Modern rubbish, stone
500	5	Manure
501	5	Cement
502	5	Stoney rubble
503	5	Loam with small pebbles
504	5	Mortar
505	5	Crumbly sand with angular stones
506	5	Large cobbles, waterwashed
507	5	Mortar and stone wall foundation
508	5	Reddish brown compact sand with glass and china fused by heat and dumped
600	6	Very compact medium grey brown clay loam
601	6	Stone and concrete foundation for a feeding stall – probably original to the building
602	6	Angular stone and concrete – cobbles removed from this area?
603	6	Line of cobbles
604	6	Waterwashed cobbles
605	6	Concrete around post – stalls for cattle – late 20 <sup>th</sup> century
606	6	Concrete around post – stalls for cattle – late 20 <sup>th</sup> century
607	6	Post impression in concrete
608	6	Metal post in concrete
609	6	Concrete around post – stalls for cattle – late 20 <sup>th</sup> century
610	6	Post impression in concrete
611	6	Concrete around post – stalls for cattle – late 20 <sup>th</sup> century
612	6	Concrete around post – stalls for cattle – late 20 <sup>th</sup> century
613	6	Metal post in concrete
614	6	Concrete bothy floor SE of Trench 6

615	6	Concrete floor NW side of Trench 6
616	6	Possible post-hole – late in date
617	6	Bothy wall SE side Trench 6
700	7	Manure
701	7	Cobbles
702	7	Loose cobbles
703	7	Wall foundation, mortar and stones
704	7	Concrete
705	7	Concrete
706	7	Loam
707	7	concrete
708	7	Loam
709	7	Concrete block
710	7	Concrete
711	7	cobbles
800	8	Very compact medium grey brown clay loam
801	8	Compact mortar and small stones -floor?
802	8	Wall foundation – large and medium stones in very compact clay loam
803	8	Cut of wall foundation
900	9	Very compact medium grey brown clay loam

### APPENDIX 3 PHOTOGRAPHS

Photo no	Description	Facing
DSC_1506	Trench 3	NE
DSC_1507	Trench 3	SE
DSC_1508-9	Trench 4	SW
DSC_1510-11	Trench 4	NW
DSC_1512	Trench 1	S
DSC_1513-14	Trench 2	SW
DSC_1515-16	Trench 6	NW
DSC_1517-19	Tr6 wall found 617 (right), cobbles 604 (centre) with concrete 605 (bottom left)	NE
DSC_1520-21	Stone and mortar foundation 601	NW
DSC_1522-25	Wall showing scar of NW wall of bothy above 617	NE
DSC_1526	Tr5 wall foundation 504 (bottom) cobbles 506 (top)	SE
DSC_1527-8	Tr5 wall foundation 504 (left) cobbles 506 (right)	NE
DSC_1529-32	Tr5 wall with scar of bothy wall 504	NE
DSC_1533-4	Tr 5 Bothy window with tooled sandstone	NE
DSC_1535-9	Tr 5 Bothy window with tooled sandstone	N
DSC_1540-1	Tr 5 Bothy window with tooled sandstone	E
DSC_1542-45	NE wall NE wing showing scars for horse stalls and names LIZZIE and PRINCE	NE
DSC_1546-64	Details of horse drawings and texts on SW wall NE wing	SW

DSC_1565	Area of Tr 5 And Tr 6 beyond	NW
DSC_1566-73	Horse stalls E corner junction NE and SE wings	
DSC_1574-6	Uncovering socket in concrete 610	
DSC_1577	Tr6	
DSC_1578-9	Horse stalls E corner junction NE and SE wings	
DSC_1580-83	Tr7 uncovering cobbles	
DSC_1584-6	Tr9 Alan, Margaret and Rebecca's trench	
DSC_1587-92	Tr8 June and Roslyn	
DSC_1593-5	Tr7 uncovering cobbles	
DSC_1596-7	Tr5	NE
DSC_1598-9	Tr5 with bothy wall behind	N
DSC_1600-1	Tr5 with bothy wall behind	E
DSC_1602	Tr5	SE
DSC_1603	Tr5	NW
DSC_1604-5	Tr5 Bridget and Sara M	NE
DSC_1606-7	Tr6 wall found 617 (right), cobbles 604 (centre) with concrete 605 (bottom left)	NE
DSC_1608	Wall showing scar of NW wall of bothy above 617	NE
DSC_1609	Cobbles 604	NE
DSC_1610	Cobbles 604 with wall behind	NE
DSC_1611	Cobbles 604 with wall behind	E
DSC_1612	Cobbles 604 with wall behind	NE
DSC_1613-6	Cobbles 605 with concrete and post 610	NE
DSC_1617-19	Concrete 606 with wall behind	NE
DSC_1620	Concrete 606 with wall behind	E
DSC_1621	Concrete 606 with wall behind NW end of trench	N
DSC_1622	Cobbles 604 NW end of trench	SE
DSC_1623-4	Tr7 cobbles 701	SW
DSC_1625-6	Tr7 cobbles 701	SE
DSC_1627-8	Tr7 cobbles 701	SW
DSC_1629-35	Tr7 cobbles 701	NE
DSC_1636-8	Tr7 cobbles 701 with concrete and stone foundation	NE
DSC_1639-40	Tr7 cobbles 701 with possible post-hole 706	NE
DSC_1641-2	Tr7 cobbles 701 with 705	SE
DSC_1643-4	Tr7 cobbles 701 706 and 705	NW
DSC_1645-6	Tr7 cobbles 701	NW
DSC_1647-50	Tr7 cobbles 701 (right) concrete	NW
DSC_1651-60	Tr7 NW wall drain holes, iron rings	NW
DSC_1661	Tr8 wall foundation 802	SW
DSC_1662-3	Tr8 wall foundation 802	NE
DSC_1664	Tr8 wall foundation 802	SE
DSC_1665-6	NW wall NW wing iron ring for bulls (Derek McBain)	NW
DSC_1667	Tr5 Heather and Premala removing cobbles 506 onto burnt sand below fused to glass and pottery	NE
DSC_1668-73	Tr5 burnt sand below 506	NE
DSC_1674-6	Tr8 wall found 801 with patch of mortar ?floor 801 (top left)	SE

DSC_1677	Tr8 wall found 801 with patch of mortar ?floor 801 (top left)	E
DSC_1678-80	Tr8 wall found 801	NE
DSC_1681-86	Tr8 wall found 801	SW
IMG_8534-83	School class	
IMG_8584	NW wing after school class left – peace and quiet!	
IMG_8587	Tr7 wall foundation 703	NW
IMG_8588	Tr7 Jovi supervising	SW
IMG_8589-93	Camping, large salads, dinner	
IMG_8594-5	Tr2 location in courtyard	NW
IMG_8596	Tr6	NNW
IMG_8597-8	Tr7	W
IMG_8599-602	Teabreak	
IMG_8603-24	Digging people shots	
IMG_8625-34	Bruce thinking about the artificial mound that the farm stands on and looking at tooling on sandstone	
IMG_8635-39	Lunch	
IMG_86040-42	Horse drawings in pencil	
IMG_8643-9	Sheila and Alejandra doing finds	
IMG_8650-80	Digging people shots	
IMG_8682-702	Dinner	
IMG_8703-25	Digging people shots	
IMG_8726-42	Copies of forms	
IMG_8743-53	Digging people shots	
IMG_8754	Empty fridge	
IMG_8755-7	Bridget and Jovi completing paperwork in car on way home	



DSC\_1505.JPG



DSC\_1506.JPG



DSC\_1507.JPG



DSC\_1508.JPG



DSC\_1509.JPG



DSC\_1510.JPG



DSC\_1511.JPG



DSC\_1512.JPG



DSC\_1513.JPG



DSC\_1514.JPG



DSC\_1515.JPG



DSC\_1516.JPG



DSC\_1517.JPG



DSC\_1518.JPG



DSC\_1519.JPG



DSC\_1520.JPG



DSC\_1521.JPG



DSC\_1522.JPG



DSC\_1523.JPG



DSC\_1524.JPG



DSC\_1525.JPG



DSC\_1526.JPG



DSC\_1527.JPG



DSC\_1528.JPG



DSC\_1529.JPG



DSC\_1530.JPG



DSC\_1531.JPG



DSC\_1532.JPG



DSC\_1533.JPG



DSC\_1534.JPG



DSC\_1535.JPG



DSC\_1536.JPG



DSC\_1537.JPG



DSC\_1538.JPG



DSC\_1539.JPG



DSC\_1540.JPG



DSC\_1541.JPG



DSC\_1542.JPG



DSC\_1543.JPG



DSC\_1544.JPG



DSC\_1545.JPG



DSC\_1546.JPG



DSC\_1547.JPG



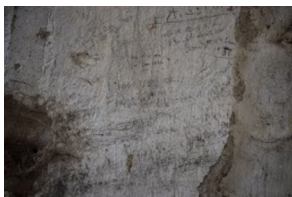
DSC\_1548.JPG



DSC\_1549.JPG



DSC\_1550.JPG



DSC\_1551.JPG



DSC\_1552.JPG



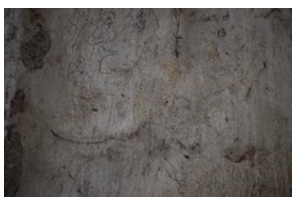
DSC\_1553.JPG



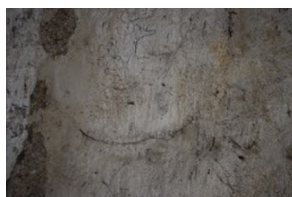
DSC\_1554.JPG



DSC\_1555.JPG



DSC\_1556.JPG



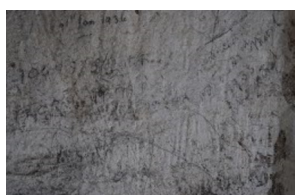
DSC\_1557.JPG



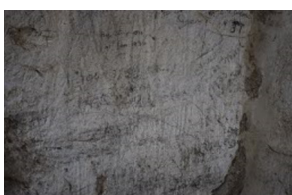
DSC\_1558.JPG



DSC\_1559.JPG



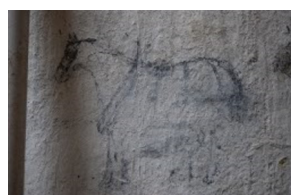
DSC\_1560.JPG



DSC\_1561.JPG



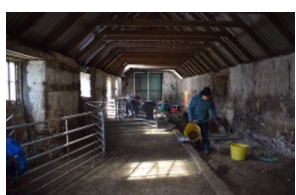
DSC\_1562.JPG



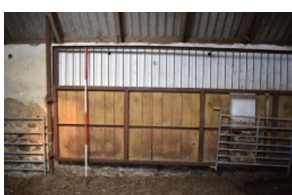
DSC\_1563.JPG



DSC\_1564.JPG



DSC\_1565.JPG



DSC\_1566.JPG



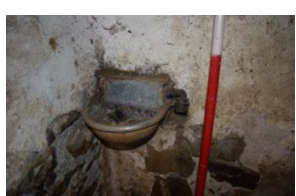
DSC\_1567.JPG



DSC\_1568.JPG



DSC\_1569.JPG



DSC\_1570.JPG



DSC\_1571.JPG



DSC\_1572.JPG



DSC\_1573.JPG



DSC\_1574.JPG





DSC\_1575.JPG



DSC\_1576.JPG



DSC\_1577.JPG



DSC\_1578.JPG



DSC\_1579.JPG



DSC\_1580.JPG



DSC\_1581.JPG



DSC\_1582.JPG



DSC\_1583.JPG



DSC\_1584.JPG



DSC\_1585.JPG



DSC\_1586.JPG



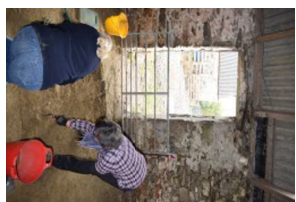
DSC\_1587.JPG



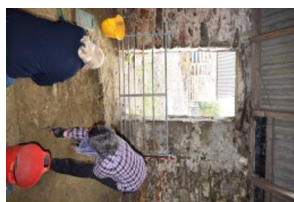
DSC\_1588.JPG



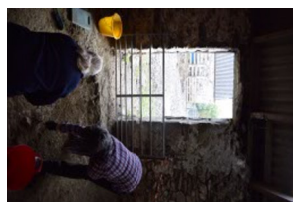
DSC\_1589.JPG



DSC\_1590.JPG



DSC\_1591.JPG



DSC\_1592.JPG



DSC\_1593.JPG



DSC\_1594.JPG



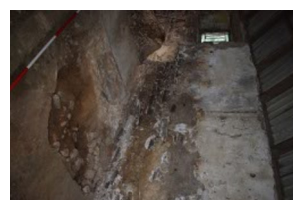
DSC\_1595.JPG



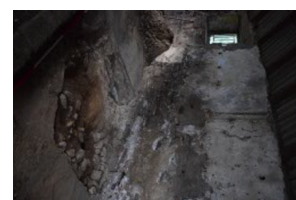
DSC\_1596.JPG



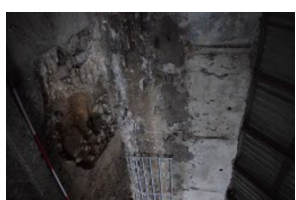
DSC\_1597.JPG



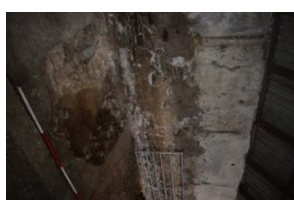
DSC\_1598.JPG



DSC\_1599.JPG



DSC\_1600.JPG



DSC\_1601.JPG



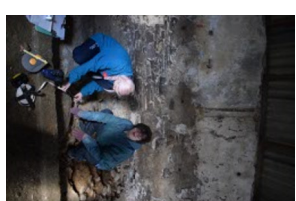
DSC\_1602.JPG



DSC\_1603.JPG



DSC\_1604.JPG



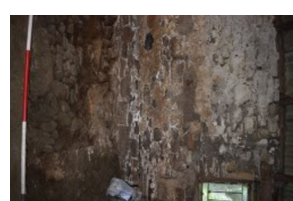
DSC\_1605.JPG



DSC\_1606.JPG



DSC\_1607.JPG



DSC\_1608.JPG



DSC\_1609.JPG



DSC\_1610.JPG



DSC\_1611.JPG



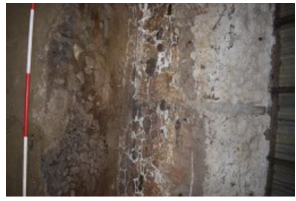
DSC\_1612.JPG



DSC\_1613.JPG



DSC\_1614.JPG



DSC\_1615.JPG



DSC\_1616.JPG



DSC\_1617.JPG



DSC\_1618.JPG



DSC\_1619.JPG



DSC\_1620.JPG



DSC\_1621.JPG



DSC\_1622.JPG



DSC\_1623.JPG



DSC\_1624.JPG



DSC\_1625.JPG



DSC\_1626.JPG



DSC\_1627.JPG



DSC\_1628.JPG



DSC\_1629.JPG



DSC\_1630.JPG



DSC\_1631.JPG



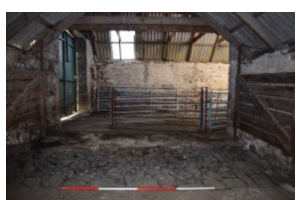
DSC\_1632.JPG



DSC\_1633.JPG



DSC\_1634.JPG



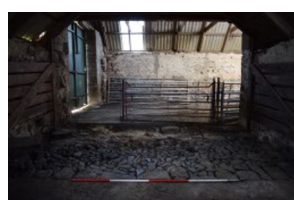
DSC\_1635.JPG



DSC\_1636.JPG



DSC\_1637.JPG



DSC\_1638.JPG



DSC\_1639.JPG



DSC\_1640.JPG



DSC\_1641.JPG



DSC\_1642.JPG



DSC\_1643.JPG



DSC\_1644.JPG



DSC\_1645.JPG



DSC\_1646.JPG



DSC\_1647.JPG



DSC\_1648.JPG



DSC\_1649.JPG



DSC\_1650.JPG



DSC\_1651.JPG



DSC\_1652.JPG



DSC\_1653.JPG



DSC\_1654.JPG



DSC\_1655.JPG



DSC\_1656.JPG



DSC\_1657.JPG



DSC\_1658.JPG



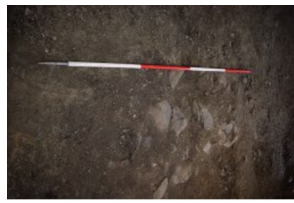
DSC\_1659.JPG



DSC\_1660.JPG



DSC\_1661.JPG



DSC\_1662.JPG



DSC\_1663.JPG



DSC\_1664.JPG



DSC\_1665.JPG



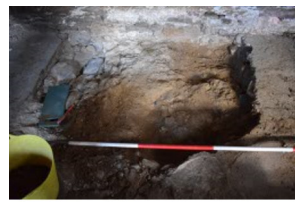
DSC\_1666.JPG



DSC\_1667.JPG



DSC\_1668.JPG



DSC\_1669.JPG



DSC\_1670.JPG



DSC\_1671.JPG



DSC\_1672.JPG



DSC\_1673.JPG



DSC\_1674.JPG



DSC\_1675.JPG



DSC\_1676.JPG



DSC\_1677.JPG



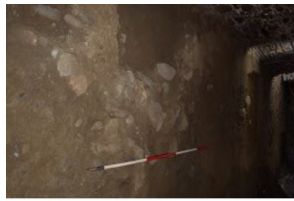
DSC\_1678.JPG



DSC\_1679.JPG



DSC\_1680.JPG



DSC\_1681.JPG



DSC\_1682.JPG



DSC\_1683.JPG



DSC\_1684.JPG



DSC\_1685.JPG



DSC\_1686.JPG



IMG\_8532.JPG



IMG\_8533.JPG



IMG\_8534.JPG



IMG\_8535.JPG



IMG\_8536.JPG



IMG\_8537.JPG



IMG\_8538.JPG



IMG\_8539.JPG



IMG\_8540.JPG



IMG\_8541.JPG



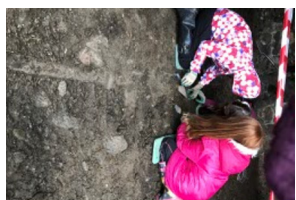
IMG\_8542.JPG



IMG\_8543.JPG



IMG\_8544.JPG



IMG\_8545.JPG



IMG\_8546.JPG



IMG\_8547.JPG



IMG\_8548.JPG



IMG\_8549.JPG



IMG\_8550.JPG



IMG\_8551.JPG



IMG\_8552.JPG



IMG\_8553.JPG



IMG\_8554.JPG



IMG\_8555.JPG



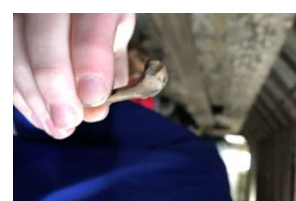
IMG\_8556.JPG



IMG\_8557.JPG



IMG\_8558.JPG



IMG\_8559.JPG



IMG\_8560.JPG



IMG\_8561.JPG



IMG\_8562.JPG



IMG\_8563.JPG



IMG\_8564.JPG



IMG\_8565.JPG



IMG\_8566.JPG



IMG\_8567.JPG



IMG\_8568.JPG



IMG\_8569.JPG



IMG\_8570.JPG



IMG\_8571.JPG



IMG\_8572.JPG



IMG\_8573.JPG



IMG\_8574.JPG



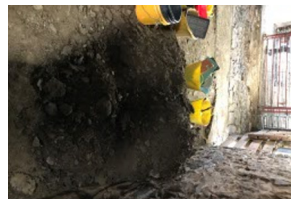
IMG\_8575.JPG



IMG\_8576.JPG



IMG\_8577.JPG



IMG\_8578.JPG



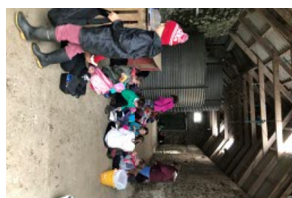
IMG\_8579.JPG



IMG\_8580.JPG



IMG\_8581.JPG



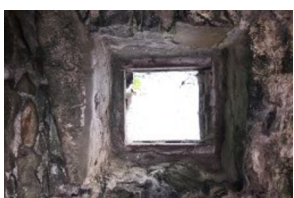
IMG\_8582.JPG



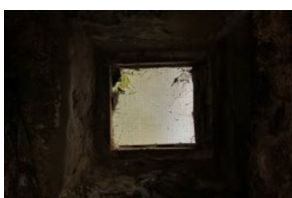
IMG\_8583.JPG



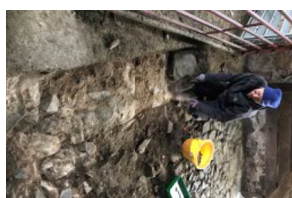
IMG\_8584.JPG



IMG\_8585.JPG



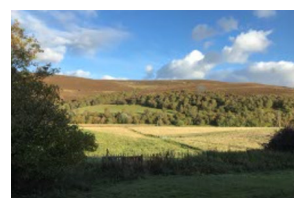
IMG\_8586.JPG



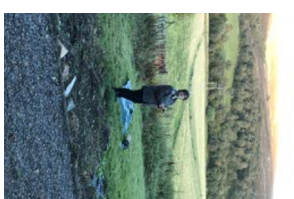
IMG\_8587.JPG



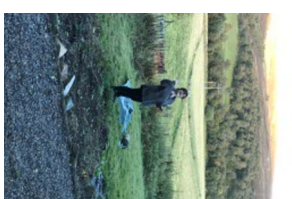
IMG\_8588.JPG



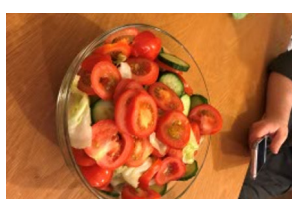
IMG\_8589.JPG



IMG\_8590.JPG



IMG\_8591.JPG



IMG\_8592.JPG



IMG\_8593.JPG



IMG\_8594.JPG



IMG\_8595.JPG



IMG\_8596.JPG



IMG\_8597.JPG



IMG\_8598.JPG



IMG\_8599.JPG



IMG\_8600.JPG



IMG\_8601.JPG



IMG\_8602.JPG



IMG\_8603.JPG



IMG\_8604.JPG



IMG\_8605.JPG



IMG\_8606.JPG



IMG\_8607.JPG



IMG\_8608.JPG



IMG\_8609.JPG



IMG\_8610.JPG



IMG\_8611.JPG



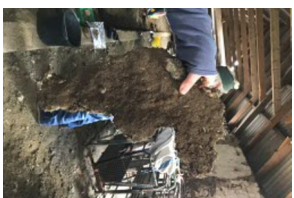
IMG\_8612.JPG



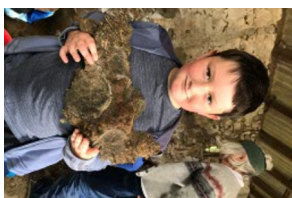
IMG\_8613.JPG



IMG\_8614.JPG



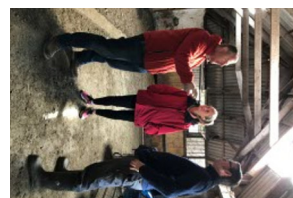
IMG\_8615.JPG



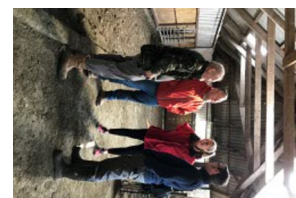
IMG\_8616.JPG



IMG\_8617.JPG



IMG\_8618.JPG



IMG\_8619.JPG



IMG\_8620.JPG



IMG\_8621.JPG



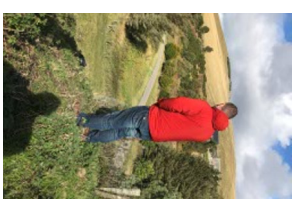
IMG\_8622.JPG



IMG\_8623.JPG



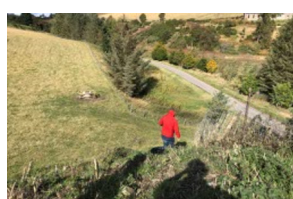
IMG\_8624.JPG



IMG\_8625.JPG



IMG\_8626.JPG



IMG\_8627.JPG



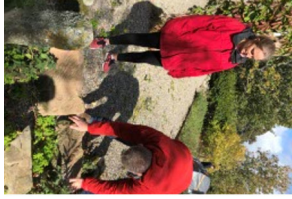
IMG\_8628.JPG



IMG\_8629.JPG



IMG\_8630.JPG



IMG\_8631.JPG



IMG\_8632.JPG



IMG\_8633.JPG



IMG\_8634.JPG



IMG\_8635.JPG



IMG\_8636.JPG



IMG\_8637.JPG



IMG\_8638.JPG



IMG\_8639.JPG



IMG\_8640.JPG



IMG\_8641.JPG



IMG\_8642.JPG



IMG\_8643.JPG



IMG\_8644.JPG



IMG\_8645.JPG



IMG\_8646.JPG



IMG\_8647.JPG



IMG\_8648.JPG



IMG\_8649.JPG



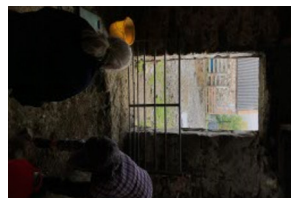
IMG\_8650.JPG



IMG\_8651.JPG



IMG\_8652.JPG



IMG\_8653.JPG



IMG\_8654.JPG



IMG\_8655.JPG



IMG\_8656.JPG



IMG\_8657.JPG



IMG\_8658.JPG



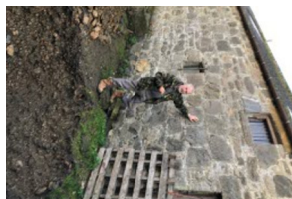
IMG\_8659.JPG



IMG\_8660.JPG



IMG\_8661.JPG



IMG\_8662.JPG



IMG\_8663.JPG



IMG\_8664.JPG



IMG\_8665.JPG



IMG\_8666.JPG



IMG\_8667.JPG



IMG\_8668.JPG



IMG\_8669.JPG



IMG\_8670.JPG



IMG\_8671.JPG



IMG\_8672.JPG



IMG\_8673.JPG



IMG\_8674.JPG



IMG\_8675.JPG



IMG\_8676.JPG



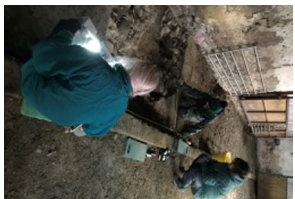
IMG\_8677.JPG



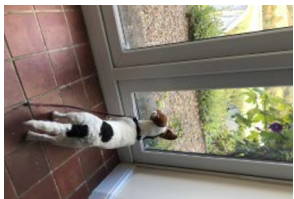
IMG\_8678.JPG



IMG\_8679.JPG



IMG\_8680.JPG



IMG\_8681.JPG



IMG\_8682.JPG



IMG\_8683.JPG



IMG\_8684.JPG



IMG\_8685.JPG



IMG\_8686.JPG



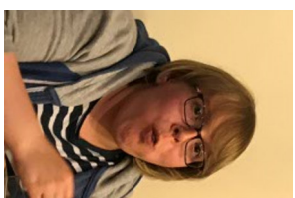
IMG\_8687.JPG



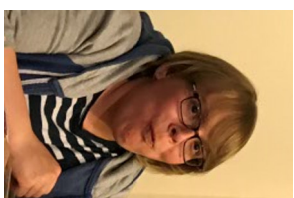
IMG\_8688.JPG



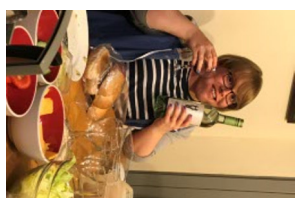
IMG\_8689.JPG



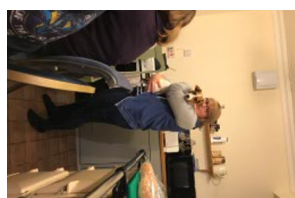
IMG\_8690.JPG



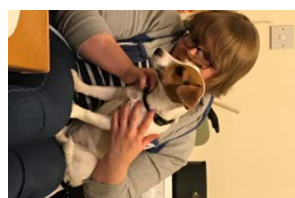
IMG\_8691.JPG



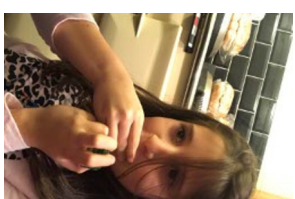
IMG\_8692.JPG



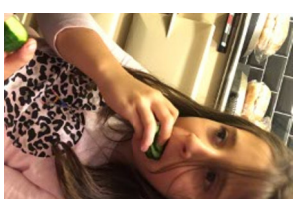
IMG\_8693.JPG



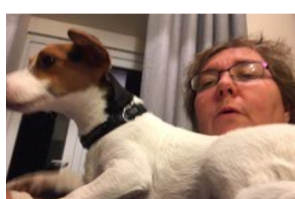
IMG\_8694.JPG



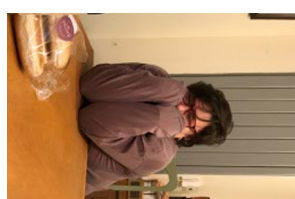
IMG\_8695.JPG



IMG\_8696.JPG



IMG\_8697.JPG



IMG\_8699.JPG



IMG\_8700.JPG





IMG\_8701.JPG



IMG\_8702.JPG



IMG\_8703.JPG



IMG\_8704.JPG



IMG\_8705.JPG



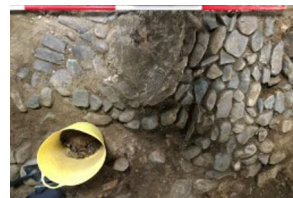
IMG\_8706.JPG



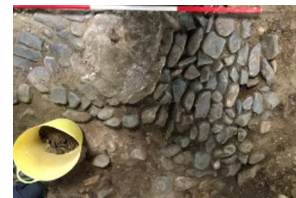
IMG\_8707.JPG



IMG\_8708.JPG



IMG\_8709.JPG



IMG\_8710.JPG



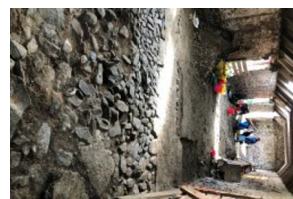
IMG\_8711.JPG



IMG\_8712.JPG



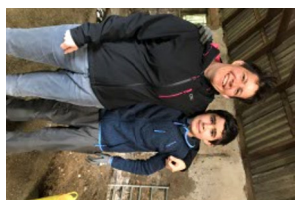
IMG\_8713.JPG



IMG\_8714.JPG



IMG\_8715.JPG



IMG\_8716.JPG



IMG\_8717.JPG



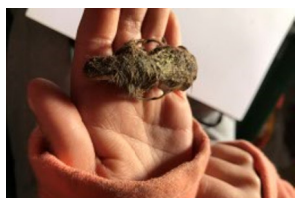
IMG\_8718.JPG



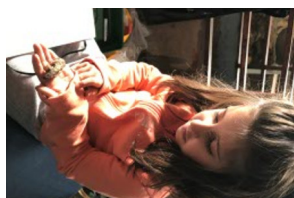
IMG\_8719.JPG



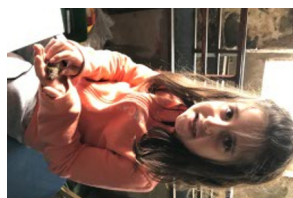
IMG\_8720.JPG



IMG\_8721.JPG



IMG\_8722.JPG



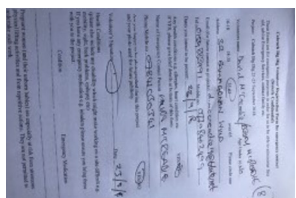
IMG\_8723.JPG



IMG\_8724.JPG



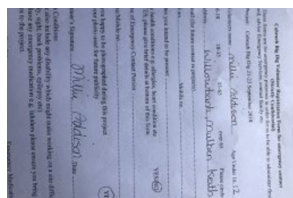
IMG\_8725.JPG



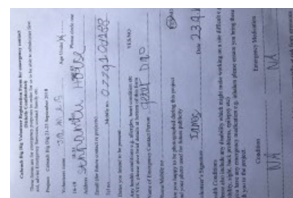
IMG\_8726.JPG



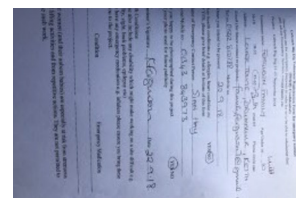
IMG\_8727.JPG



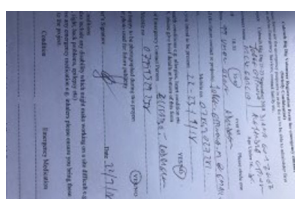
IMG\_8728.JPG



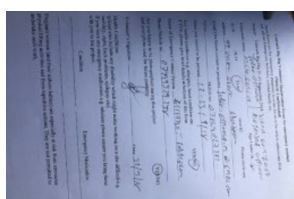
IMG\_8729.JPG



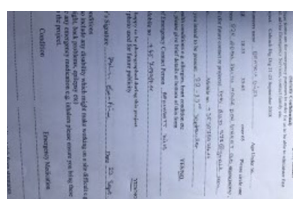
IMG\_8730.JPG



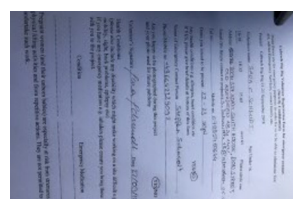
IMG\_8731.JPG



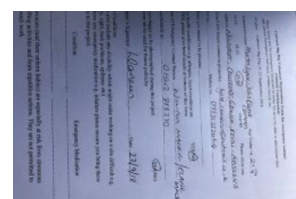
IMG\_8732.JPG



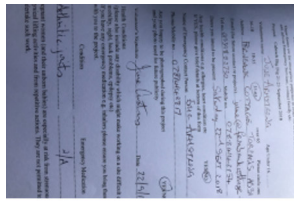
IMG\_8733.JPG



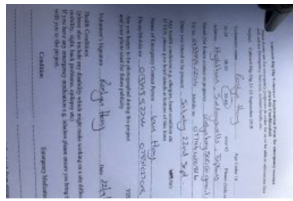
IMG\_8734.JPG



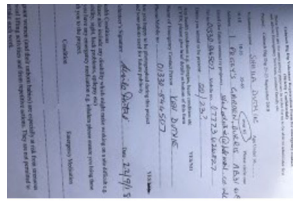
IMG\_8735.JPG



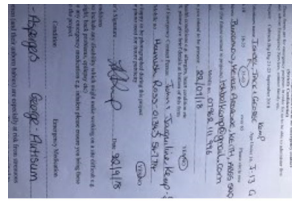
IMG\_8736.JPG



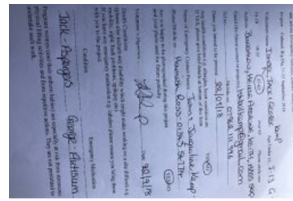
IMG\_8737.JPG



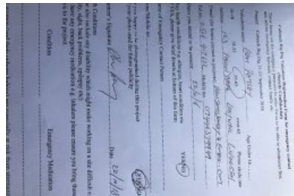
IMG\_8738.JPG



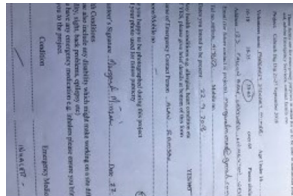
IMG\_8739.JPG



IMG\_8740.JPG



IMG\_8741.JPG



IMG\_8742.JPG



IMG\_8743.JPG



IMG\_8744.JPG



IMG\_8745.JPG



IMG\_8746.JPG



IMG\_8747.JPG



IMG\_8748.JPG



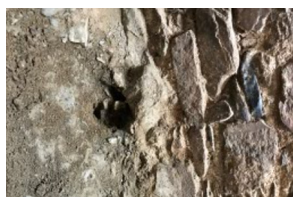
IMG\_8749.JPG



IMG\_8750.JPG



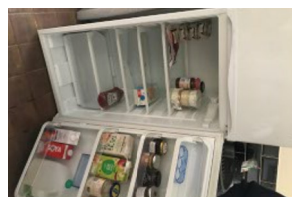
IMG\_8751.JPG



IMG\_8752.JPG



IMG\_8753.JPG



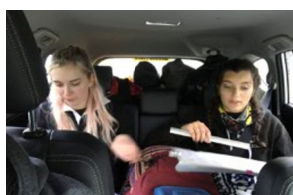
IMG\_8754.JPG



IMG\_8755.JPG



IMG\_8756.JPG



IMG\_8757.JPG