

**A Report on an Archaeological Watching Brief  
Eastside Discount Centre, Banff,  
Aberdeenshire, AB45 1AY  
(Data Structure Report)**



**Robert Lenfert, PhD, ACIfA  
Cameron Archaeology  
February 22nd, 2019**

## CONTENTS

1	BACKGROUND .....	3
2	ARCHAEOLOGICAL BACKGROUND .....	4
3	THE WATCHING BRIEF .....	6
4	CONCLUSIONS .....	8
5	REFERENCES .....	8
6	ACKNOWLEDGEMENTS .....	8
	APPENDIX 1 ARCHAEOLOGICAL SITES .....	9
	APPENDIX 2 MAPS .....	16
	APPENDIX 3 PHOTOS .....	18

## ILLUSTRATIONS

Cover: Junction box and trenching completed at site (top), ceramic lid (lower left) and blue glass bottle recovered from trench.

Illus 1	Location plan (Contains Ordnance Survey data © Crown copyright and database right 2019) .....	3
Illus 2	Photos of the culverts discovered in 1985 (copyright Aberdeenshire Council SMR) .....	5
Illus 3	Location of cable trench and junction box ( <i>contains Ordnance Survey data, Crown Copyright 2019</i> ) .....	6
Illus 4	Slender blue-glass bottle, presumably medicinal, located in sump at base of retaining wall. ....	7
Illus 5	Wood's map of 1823 showing approximate area of site outlined in red (copyright National Library of Scotland) .....	16
Illus 6	First Edition OS map showing site outlined in red (copyright National Library of Scotland) Banffshire IV.12 (Banff) Survey date: 1867 Publication date: 1868 .....	16
Illus 7	Second Edition OS map showing site outlined in red ( <i>copyright National Library of Scotland</i> ) Banffshire IV.12 (Banff) Publication date: 1904 Revised: 1902 .....	17
Illus 8	Third Edition OS map showing site outlined in red ( <i>copyright National Library of Scotland</i> ) Banffshire IV.12 (Banff) Publication date: 1930 Revised: 1929 .....	17

## SUMMARY

*On February 18th, 2019, an archaeological watching brief was held on ground between the SE side of Green Banks Caravan Park and the Spotty Bag Shop in Banff during electrical upgrades to the shop's expanding kitchen and restaurant operations. This involved the excavation of a rectangular junction pit to tap into existing buried electrical cables with a branch trench dug to the shop's existing electrical inlet at the rear of the building.*

*No archaeological features were observed, but several fragments of probable 19th century glass and ceramic were recovered, along with a rather unusual narrow blue glass bottle. However, the ground through which the cable was dug consisted of imported fills, presumably imported from the surrounding area. No further archaeological mitigation or work is deemed necessary.*



## 1 BACKGROUND

- 1.1 The site (Illus 1) is located On the SE side of Green Banks caravan park. It is centred on NGR NJ 69278 63996, at 0-5m OD in the parish of Banff.
- 1.2 The work was commissioned by SSE. Caroline Palmer of Aberdeenshire Council Archaeology Service requires a watching brief during the excavation of this trench as stone culverts were uncovered during sewer works in 1985 (see below).
- 1.3 All the archaeological work was carried out in the context of Scottish Planning Policy (SPP) Planning Advice Note (PAN 2/2011) and Historic Environment Scotland's Policy Statement (HESPS) which state that archaeological remains should be regarded as part of the environment to be protected and managed.

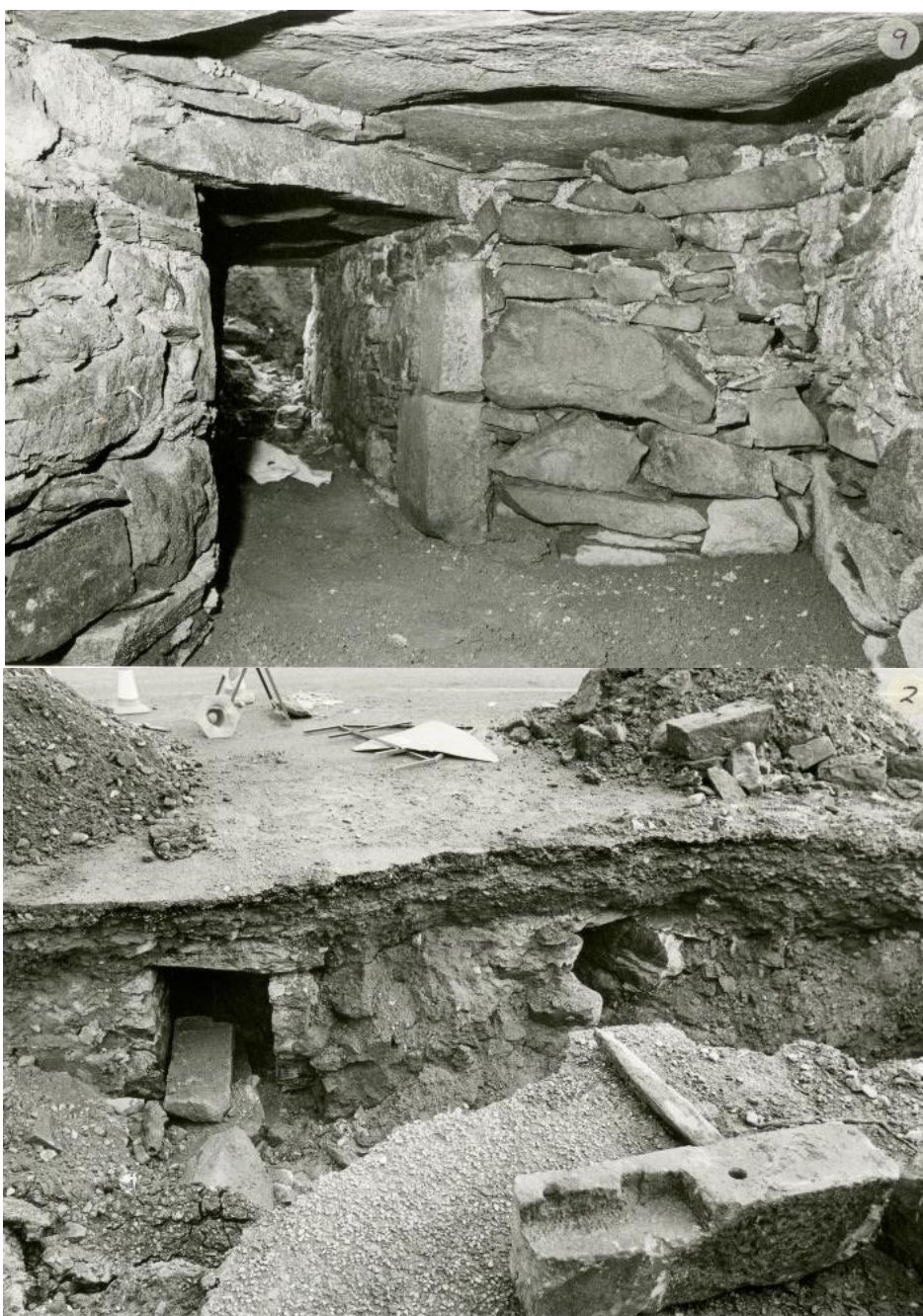


Illus 1 Location plan (Contains Ordnance Survey data © Crown copyright and database right 2019)

## 2 ARCHAEOLOGICAL BACKGROUND

The Historic Environment Record (HER) and Canmore (HES) were consulted online within 0.3km of the proposed development.

2.1 The works are on the site of two chambers (SMR NJ66SE0053), identified as culverts, were found in this area in 1985 during the reconstruction of sewers. It was noted as being a complex, well-built structure. The western one was already blocked when visited but was connected under the road with the other. The more easterly chamber extended under the road but at its North end had become blocked by a fall of sand. The side walls were built of random rubble with very gritty mortar. Within in it was a deposit of dark clayey silt to a depth of 0.51m. Made of red sandstone slabs with a rebate. Two metal pins and other shaped stones were also found within the tunnels. The culverts probably date to the 18th century, but were removed after their rediscovery in order for the new sewer works to continue (Shepherd 1985, 17).







Illus 2 Photos of the culverts discovered in 1985 (copyright Aberdeenshire Council SMR)

- 2.2 The site is on the edge of Burgh of Banff (SMR NJ66SE0242), a Royal Burgh as early as the 11th century. The burgh's only extant charter was granted by King Robert the Second in 1372. In the medieval period the principal source of revenue was the harbour, trading in wool, salmon and hides. There are early customs records from 1390. The new harbour (NJ66SE0037) was completed in 1775.
- 2.3 To the WNW of the proposed trench was a former printing works (SMR NJ66SE0041), now in use as a retail space. Built in the early 19th century, possibly incorporating earlier work. 2-storey, 6 bay rubble front block, with round-headed doorway and a 2-storey, 2 by 7 rubble brick building with a single-storey workshops and a small circular-section brick chimney.
- 2.4 W of the proposed trench is the site of Castle Panton (SMR NJ66SE0055), later the Crown Hotel. A 3-storey house with a shaped wall-head gable. Largely reconstructed in 1780, its nucleus which included vaulting, moulded openings and an interesting trefoiled archway may have been of 16th century date. In the late 18th century it was the townhouse of John Innes of Edingight, a Provost of Banff, who died there in 1790. In c.1800 a north wing was added. Latterly used as a hotel. After a fire at the hotel in 1981 the building was demolished. Two sherds of medieval pottery were found in area during trial excavation in 1984 ahead of redevelopment of the site for flats.
- 2.5 The culverts are in a marginal area on the W bank of the River Deveron on the first Edition OS map (Illus 5). By the Second Edition OS map (Illus 6) a 'Boatbuilding yard' has been built NE of the proposed development which is a group of four buildings set around a rectangular courtyard with a further rectangular enclosure to the SE; a dashed line represents a path from the e end of Market Place to the Boatbuilding Yard. This Yard has disappeared from the 3<sup>rd</sup> Edition OS map (Illus 7).

### 3 THE WATCHING BRIEF

On February 18th, 2019, an archaeological watching brief was held on ground between the SE side of Green Banks Caravan Park and the Spotty Bag Shop in Banff during electrical upgrades to the shop's expanding kitchen and restaurant operations.

This involved the excavation of a rectangular junction pit to tap into existing buried electrical cables using a tracked mini-digger with a branch trench dug to the shop's existing electrical inlet at the rear of the building. In total, trenching measured approximately 32m in length by 600mm in average depth, while the junction pit measured 2.2m x 1.4m by 1.25m in depth. A shaft 2m deep was hand excavated to pass under the existing stone and mortar retaining wall immediately outside the rear corner of the shop (west exit point from green 'play area' in Illus 3, below).

No archaeological features were observed, but several fragments of probable 19th century glass and ceramic were recovered, along with a rather unusual narrow blue-purple glass bottle.

The ground through which the cable was dug consists of made-up ground, likely redeposited during construction of the caravan site or the shop itself, although the former ground surface was encountered in the sump area around 1.7m deep.



Illus 3 Location of cable trench and junction box (contains Ordnance Survey data, Crown Copyright 2019)





Illus 4 Slender blue-glass bottle, presumably medicinal, located in sump at base of retaining wall.

## **4 CONCLUSIONS**

While several 19th century glass and ceramic fragments of interest, along with a largely intact blue glass bottle (Illus 4) were recovered from the sump area, no signs of similar culverts identified in the 1980s by Ian Shepherd were observed, nor were any other archaeological features. Therefore, no further archaeological fieldwork is deemed necessary.

## **5 REFERENCES**

**Shepherd, IAG and Bogden, N** Old Market Street/Bridge Road, Banff. Discovery and Excavation in Scotland for 1985.

## **6 ACKNOWLEDGEMENTS**

Thanks to Kelsea Berry, SSE for initiating this project and to Caroline Palmer, Aberdeenshire Council Archaeology Service for her advice during this work.



## APPENDIX 1

### Archaeological and historical sites within 0.3km of the proposed site (HES and Aberdeenshire HER online)

Dataset	Dataset UID	Name
HERABER	NJ66SE0228	Low Shore, Banff
HERABER	NJ66SE0241	Biggar Fountain, Banff
HERABER	NJ66SE0021	Banff Market Cross
HERABER	NJ66SE0237	New Market Archway, Low St
HERABER	NJ66SE0068	The Palace/ Townhouse
HERABER	NJ66SE0238	32 Low Street, Banff
HERABER	NJ66SE0060	30 Low Street, Banff
HERABER	NJ66SE0064	1 Carmelite Street, Banff
HERABER	NJ66SE0061	The Town House, Banff
HERABER	NJ66SE0157	36-38 Low Street, Banff
HERABER	NJ66SE0059	Ingleneuk, Water Path
HERABER	NJ66SE0066	The Market Arms
HERABER	NJ66SE0239	10 Carmelite Street, Banff
HERABER	NJ66SE0170	1 High Shore, Banff
HERABER	NJ66SE0054	Pennants Mound
HERABER	NJ66SE0039	Gordon's Granary, Church St
HERABER	NJ66SE0032	St Mary's Church, Banff
HERABER	NJ66SE0042	6 Deveronside And 30a - 32a
HERABER	NJ66SE0232	Deveronside
HERABER	NJ66SE0065	3 And 4 Church Street
HERABER	NJ66SE0055	Old Market Place
HERABER	NJ66SE0041	Printing Works
HERABER	NJ66SE0053	Old Market St/ Bridge St
HERABER	NJ66SE0186	Duff House Walled Garden
HERABER	NJ66SE0172	41-47 Bridge Street, Banff
HERABER	NJ66SE0158	34b Bridge Street, Banff
HERABER	NJ66SE0235	Banff Community Centre
HERABER	NJ66SE0067	The Old House Of Airlie
HERABER	NJ66SE0035	Bridge Of Banff
HERABER	NJ66SE0242	Banff
HERABER	NJ66SE0225	Duff House

Dataset	Name	OS NGR	Classification
RCAHMS	Banff, 9 Carmelite Street	NJ 69004 64007	Term Pending
RCAHMS	Banff, 1 High Shore	NJ 69011 64008	House (17th Century)
RCAHMS	Banff, 9 Old Market Place, Banff Tyre Services	NJ 69174 64008	Commercial Premises (period Unassigned), Office (period Unassigned), School (18th Century), Banff Grammar School, Banffshire Journal

RCAHMS	Banff, Greenbanks	NJ 69230 64010	Term Pending
RCAHMS	Banff, 3 High Shore	NJ 69011 64018	Term Pending
RCAHMS	Banff, Carmelite Street, Printing Works	NJ 69180 64020	Works (period Unassigned)
RCAHMS	Banff, Carmelite Street, General	NJ 69100 64020	General View
RCAHMS	Banff, Church Street, Banff Tyre Services, Garage Workshop	NJ 69181 64030	Commercial Premises (period Unassigned), House (period Unassigned), Old Market Place
RCAHMS	Banff, 5 High Shore, The Market Arms	NJ 69013 64031	Inn (18th Century), Public House (16th Century), Market Inn
RCAHMS	Banff, Church Street	NJ 69080 64040	Term Pending
RCAHMS	Banff, 11 High Shore	NJ 69003 64049	Term Pending
RCAHMS	Banff, 4 Church Street, Old Bower Dowerhouse	NJ 69080 64050	Dower House (post Medieval)
RCAHMS	Banff, 3 Church Street	NJ 69089 64054	Term Pending
RCAHMS	Banff, 12 High Shore	NJ 69024 64055	Term Pending
RCAHMS	Banff, Church Street, St Mary's Church And Burial-ground	NJ 69048 64056	Burial Aisle (period Unassigned), Burial Ground (period Unassigned), Church (18th Century), Carmelite Street, High Shore, Ogilvie Burial-vault, Old Parish Church
RCAHMS	Banff, 4 Water Path	NJ 69006 64059	Term Pending
RCAHMS	Banff, 3 Water Path	NJ 69000 64061	Term Pending
RCAHMS	Banff, 14 High Shore	NJ 69024 64063	Term Pending
RCAHMS	Banff, 16 High Shore	NJ 69024 64070	Term Pending
RCAHMS	Banff, Banff Granite Works	NJ 69090 64080	Crane (period Unassigned), Works (period Unassigned)
RCAHMS	Banff, High Shore, Gordon Granaries	NJ 69040 64097	Granary (period Unassigned), Church Street, Deveronside, Warehouse
RCAHMS	Banff, High Shore, Police Station	NJ 69006 64109	Bank (earthwork) (period Unassigned), Police Station (19-20th Century), Commercial Bank
RCAHMS	Banff, 21 High Shore, Shore House	NJ 69008 64128	House (18th Century)
RCAHMS	Banff, 30a-32 High Shore	NJ 69033 64159	Warehouse (19th Century)(possible)



RCAHMS	Banff, 6 Deveronside	NJ 69032 64165	House (19th Century), Shop (19th Century)
RCAHMS	Banff, 6 Deveronside	NJ 69032 64168	Term Pending
RCAHMS	Banff, High Shore, General	NJ 69030 64180	General View
RCAHMS	Banff, 7-8 Deveronside, Ship Inn	NJ 69030 64185	Public House (period Unassigned), High Shore
RCAHMS	Banff, The House Of Airlie	NJ 69200 63700	House (period Unassigned), The Old House Of Airlie, The Old Lodging
RCAHMS	Banff, 2 Low Street	NJ 68998 63787	Term Pending
RCAHMS	Duff House, Banff, Bridge Street, Bridge Of Banff Lodge	NJ 69378 63788	Gate Lodge (period Unassigned), Bridge Gates House, Duff House Estate, Duff House Policies, Banff Bridge
RCAHMS	Banff, Pennant's Mount	NJ 69000 63800	Garden Feature (period Unassigned)(possible), Mound (period Unassigned), Carmelite House Hotel, Low Street, Banff
RCAHMS	Banff, 6 Low Street	NJ 69012 63805	Term Pending
RCAHMS	Banff, 8 Low Street	NJ 68996 63813	Flat(s) (19-20th Century), Hotel (19th Century), House (period Unassigned), Fife Arms Hotel, Fife House
RCAHMS	Banff, 10 Low Street, Fife Arms Hotel	NJ 68996 63834	Hotel (19th Century), Fife House
RCAHMS	Banff, 12 Low Street, Fife Arms Hotel	NJ 68995 63845	Hotel (period Unassigned), Public House (period Unassigned), Fife House
RCAHMS	Banff, Bridge Road, Princess Royal Park	NJ 69260 63860	Park (20th Century), Recreation Ground (20th Century), Banff Bridge
RCAHMS	Banff, 43, 45, 47 Bridge Street	NJ 69014 63890	Term Pending
RCAHMS	Banff, 10 Deveronside	NJ 69025 64201	Term Pending
RCAHMS	Banff, 11 Deveronside	NJ 69029 64218	Term Pending
RCAHMS	Banff, 49 And 53 Bridge Street	NJ 69002 63896	House (18th Century), Shop (19th Century)
RCAHMS	Banff, 51 Bridge Street	NJ 68996 63897	Term Pending
RCAHMS	Banff, 41 Bridge Street	NJ 69019 63897	Cinema (20th Century), House(s) (18th Century), Shop (period Unassigned)
RCAHMS	Banff, 39 Bridge Street	NJ 69023 63899	Term Pending
RCAHMS	Banff, Carmelite Street	NJ 69200 63900	Unidentified Pottery (medieval)

RCAHMS	Banff, 21-25 Bridge Street	NJ 69070 63913	House (period Unassigned), Shop (period Unassigned)
RCAHMS	Banff, 46 Bridge Street	NJ 69001 63914	Term Pending
RCAHMS	Banff, 42, 44 Bridge Street	NJ 69010 63916	House (18th Century), Shop (19th Century)(possible)
RCAHMS	Banff, 38-40 Bridge Street	NJ 69019 63919	House (18th Century), Shop (19th Century)
RCAHMS	Banff, 15 Bridge Street	NJ 69095 63920	Term Pending
RCAHMS	Banff, 13 Bridge Street	NJ 69100 63920	Term Pending
RCAHMS	Banff, Bridge Street, Drill Hall	NJ 69195 63924	Community Centre (20th Century), Drill Hall (20th Century), Drill Hall (first World War), Banff Community Centre
RCAHMS	Banff, 36 Bridge Street	NJ 69035 63924	Term Pending
RCAHMS	Banff, 7 Bridge Street	NJ 69129 63929	Term Pending
RCAHMS	Banff, 28, 30, 32 Bridge Street	NJ 69042 63931	Term Pending
RCAHMS	Banff, 9 Bridge Street	NJ 69125 63931	Term Pending
RCAHMS	Banff, 1, 3, 5 Bridge Street	NJ 69138 63933	Term Pending
RCAHMS	Banff, 10 Bridge Street, Hotel	NJ 69083 63939	Hotel (period Unassigned), Royal Oak Hotel
RCAHMS	Banff, 8 Bridge Street	NJ 69127 63949	Term Pending
RCAHMS	Banff, 2-6 Bridge Street	NJ 69139 63950	House (19th Century)
RCAHMS	Banff, Old Market Place, Former Smithy	NJ 69206 63952	Grain Warehouse (18th Century), Smithy (20th Century)
RCAHMS	Banff, Old Market Place, Panton House	NJ 69163 63959	House (18th Century)
RCAHMS	Banff, Old Market Place, General	NJ 69200 63960	General View
RCAHMS	Banff, Castle Panton	NJ 69170 63960	Hotel (period Unassigned), 4 Old Market Place, Crown Hotel
RCAHMS	Banff, Reid Street, General	NJ 69111 63970	General View
RCAHMS	Banff, 10 Carmelite Street	NJ 69012 63975	Post Office (19-20th Century), Former Post Office
RCAHMS	Banff, 1 Old Market Place	NJ 69138 63976	Hotel (19th Century), St Andrew's Hotel
RCAHMS	Banff, 4-6 Carmelite Street	NJ 68997 63979	Term Pending



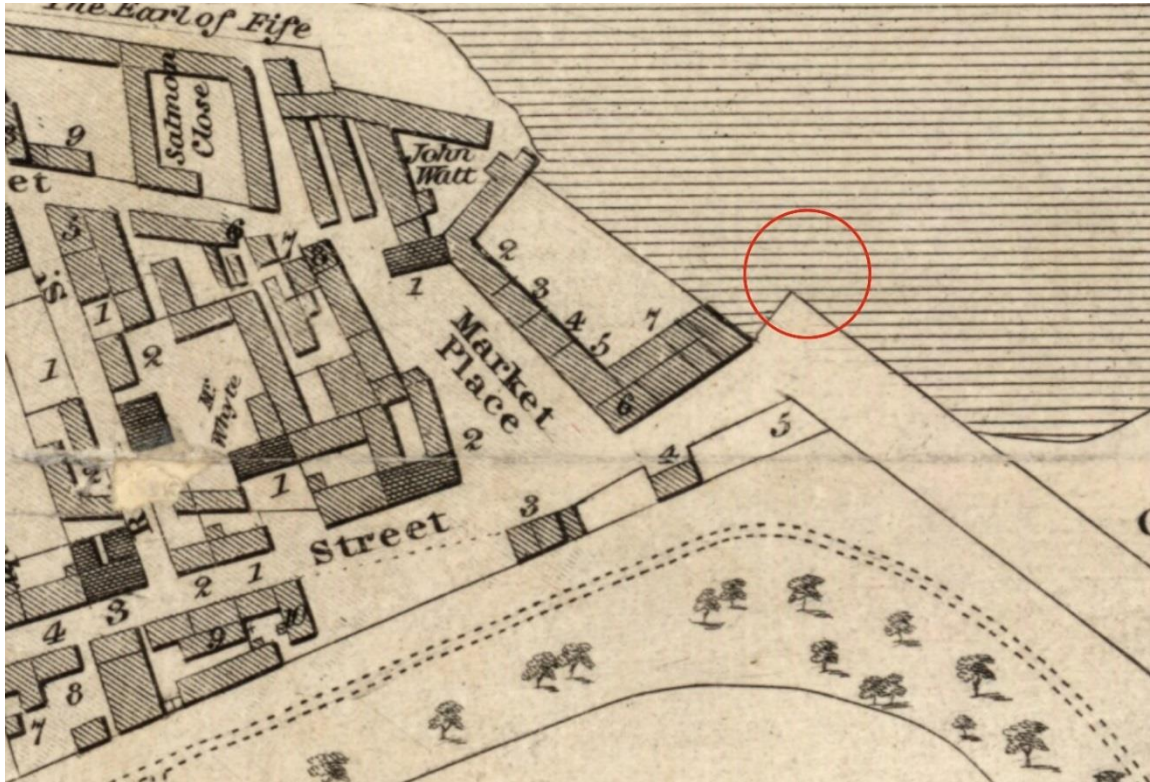
RCAHMS	Banff, 16-18 Carmelite Street, Graham (banff) Ltd	NJ 69031 63982	Police Station (19-20th Century), Shop (period Unassigned), Police Station
RCAHMS	Banff, Old Market Street And Bridge Road	NJ 69000 64000	Culvert(s) (period Unassigned)
RCAHMS	Banff, 11 Old Market Place	NJ 69194 64003	Term Pending
RCAHMS	Banff, 33 Low Street	NJ 68942 63919	Term Pending
RCAHMS	Banff, 43, 45 Low Street	NJ 68947 63947	Term Pending
RCAHMS	Banff, 41 Low Street	NJ 68947 63942	Term Pending
RCAHMS	Banff, 35, 37 Low Street	NJ 68949 63932	Term Pending
RCAHMS	Banff, 31 Low Street	NJ 68953 63920	Term Pending
RCAHMS	Banff, 29 Low Street, Bank	NJ 68956 63911	Bank (financial) (period Unassigned), Bank Of Scotland
RCAHMS	Banff, 15 Low Street	NJ 68956 63866	Term Pending
RCAHMS	Banff, 13 Low Street	NJ 68959 63859	Term Pending
RCAHMS	Banff, 9, 11 Low Street	NJ 68960 63849	Term Pending
RCAHMS	Banff, 25, 27 Low Street	NJ 68961 63895	Term Pending
RCAHMS	Banff, 23 Low Street	NJ 68962 63884	Term Pending
RCAHMS	Banff, 3, 5, 7 Low Street	NJ 68964 63846	Term Pending
RCAHMS	Banff, 2 Back Path	NJ 68969 63838	Term Pending
RCAHMS	Banff, 17 Low Street	NJ 68970 63870	Term Pending
RCAHMS	Banff, 1 Back Path, Trevona	NJ 68973 63838	Term Pending
RCAHMS	Banff, Low Street, General	NJ 68979 63870	General View
RCAHMS	Banff, 30 Low Street, Carmelite House Hotel	NJ 68986 63926	Hotel (period Unassigned), House (18th Century), Carmelite House
RCAHMS	Banff, 28 Low Street	NJ 68987 63913	Term Pending, Bridge Street
RCAHMS	Banff, 32 Low Street	NJ 68989 63940	Bank (financial) (period Unassigned), Aberdeen Town And Country Bank
RCAHMS	Banff, 22 Low Street	NJ 68989 63884	Terraced House (period Unassigned)

RCAHMS	Banff, 26 Low Street	NJ 68990 63889	Term Pending, Bridge Street
RCAHMS	Banff, 18, 20 Low Street	NJ 68991 63880	Terraced House (period Unassigned)
RCAHMS	Banff, 14, 16 Low Street	NJ 68992 63864	Flat(s) (19-20th Century), Hotel (19th Century), House (period Unassigned), Fife Arms Hotel, Fife House
RCAHMS	Banff, 48 Bridge Street	NJ 68993 63915	Term Pending, Low Street
RCAHMS	Banff, 4, 4a Low Street	NJ 68995 63804	Term Pending
RCAHMS	Banff, 10 Strait Path	NJ 68919 63985	Term Pending
RCAHMS	Banff, 8 Strait Path	NJ 68924 63986	Term Pending
RCAHMS	Banff, 9 Strait Path	NJ 68927 63998	Term Pending, The Broken Fiddle
RCAHMS	Banff, 6 Strait Path	NJ 68928 63986	Term Pending
RCAHMS	Banff, Strait Path, General	NJ 68940 63990	General View
RCAHMS	Banff, 47 Low Street	NJ 68945 63958	Term Pending
RCAHMS	Banff, 53 Low Street, Tollbooth Hotel	NJ 68947 63982	Hotel (period Unassigned), Dunvegan House Hotel, Rose's Temperance Hotel
RCAHMS	Banff, 49-51 Low Street, Clydesdale Bank	NJ 68947 63969	Bank (financial) (period Unassigned), North Of Scotland Bank
RCAHMS	Banff, 1, 3 Strait Path	NJ 68951 63996	House (19th Century)
RCAHMS	Banff, Water Path, General	NJ 68960 64080	General View
RCAHMS	Banff, Low Street, Biggar Memorial Drinking Fountain	NJ 68962 63981	Drinking Fountain (period Unassigned)
RCAHMS	Banff, 55, 57 Low Street	NJ 68966 63998	Term Pending
RCAHMS	Banff, Low Street, Market Cross	NJ 68974 63971	Market Cross (medieval), Mercat Cross, Plainstones, Plainstones
RCAHMS	Banff, Low Street, New Market Archway	NJ 68977 63993	Archway (period Unassigned)
RCAHMS	Banff, 6 Water Path, Ingle Neuk, Garden Walls	NJ 68981 64066	Garden Wall(s) (period Unassigned)
RCAHMS	Banff, 2 Carmelite Street	NJ 68985 63973	Term Pending, 36, 38 Low Street
RCAHMS	Banff, 1 Carmelite Street	NJ 68987 63999	Term Pending

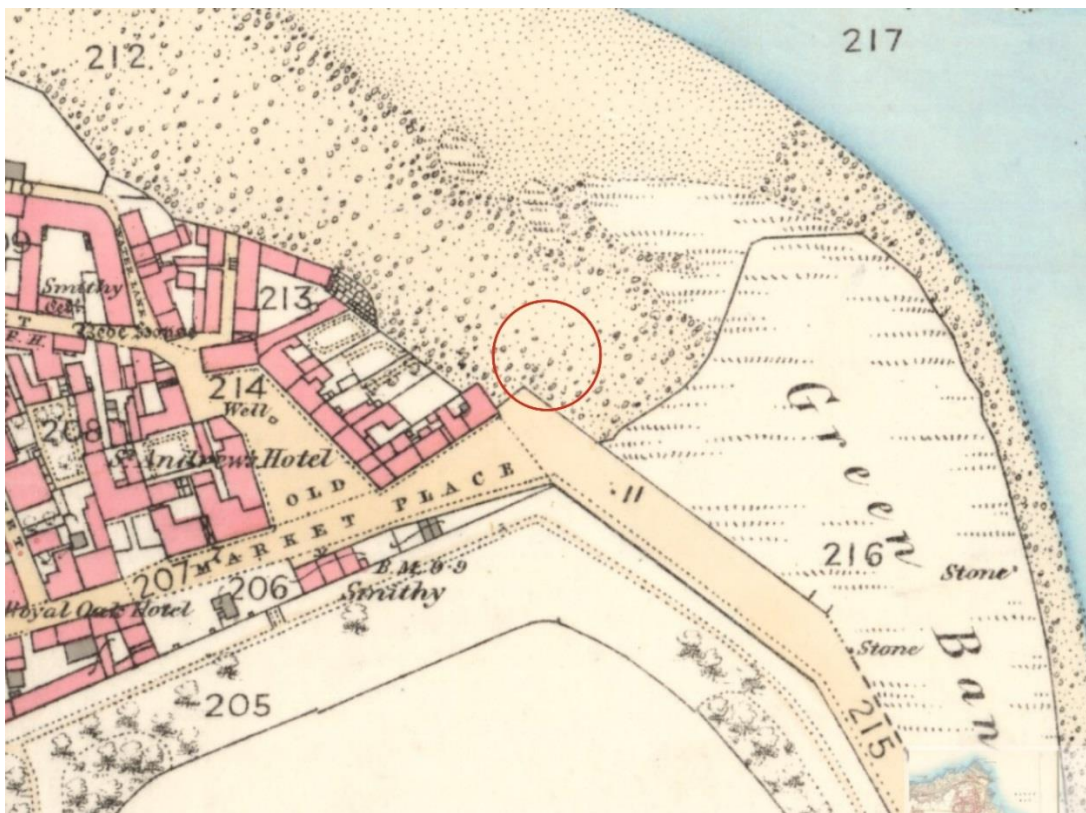


RCAHMS	Banff, 34 Low Street, Town House	NJ 68988 63963	Town House (18th Century)
RCAHMS	Banff, 9 High Shore	NJ 68988 64041	Term Pending, Fernlee
RCAHMS	Banff, 6 Water Path, Ingle Neuk	NJ 68988 64055	House (17th Century), 2 Water Path, Ingleneuk House
RCAHMS	Banff, Low Street, Tolbooth Steeple	NJ 68989 63949	Steeple (18th Century), Tolbooth (16th Century)
RCAHMS	Banff, 5 Carmelite Street	NJ 68993 64019	Term Pending

## APPENDIX 2 MAPS

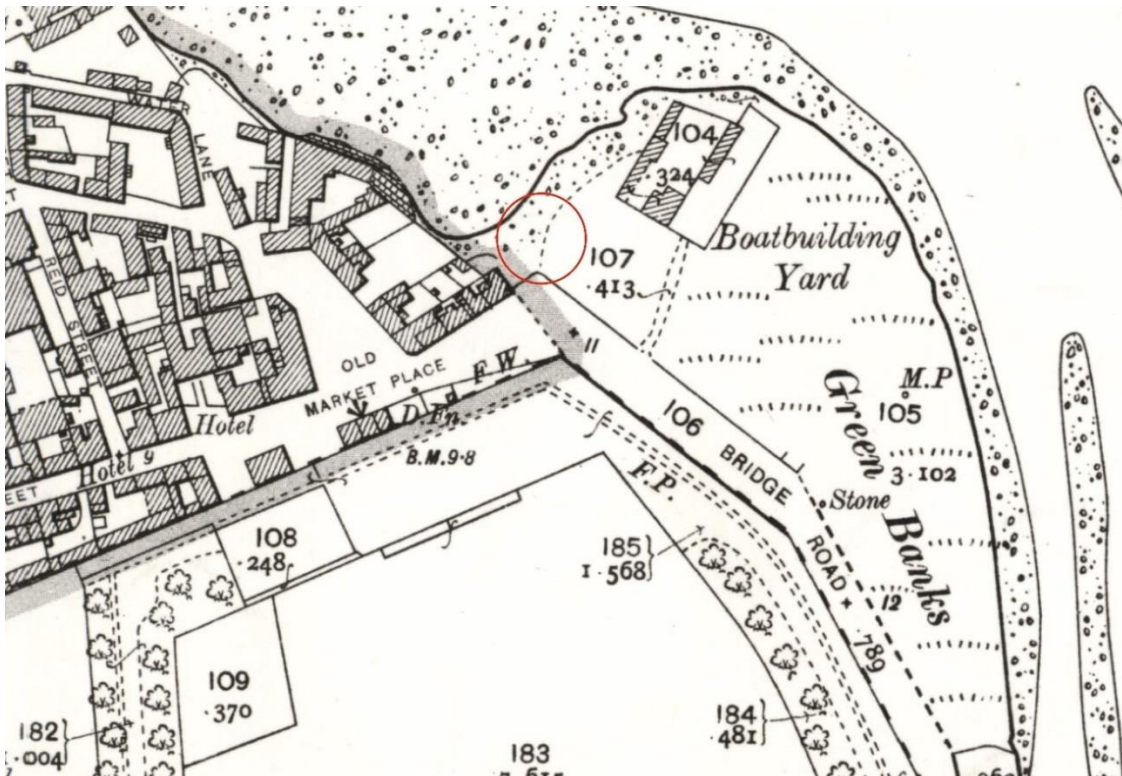


Illus 5 Wood's map of 1823 showing approximate area of site outlined in red (copyright National Library of Scotland)

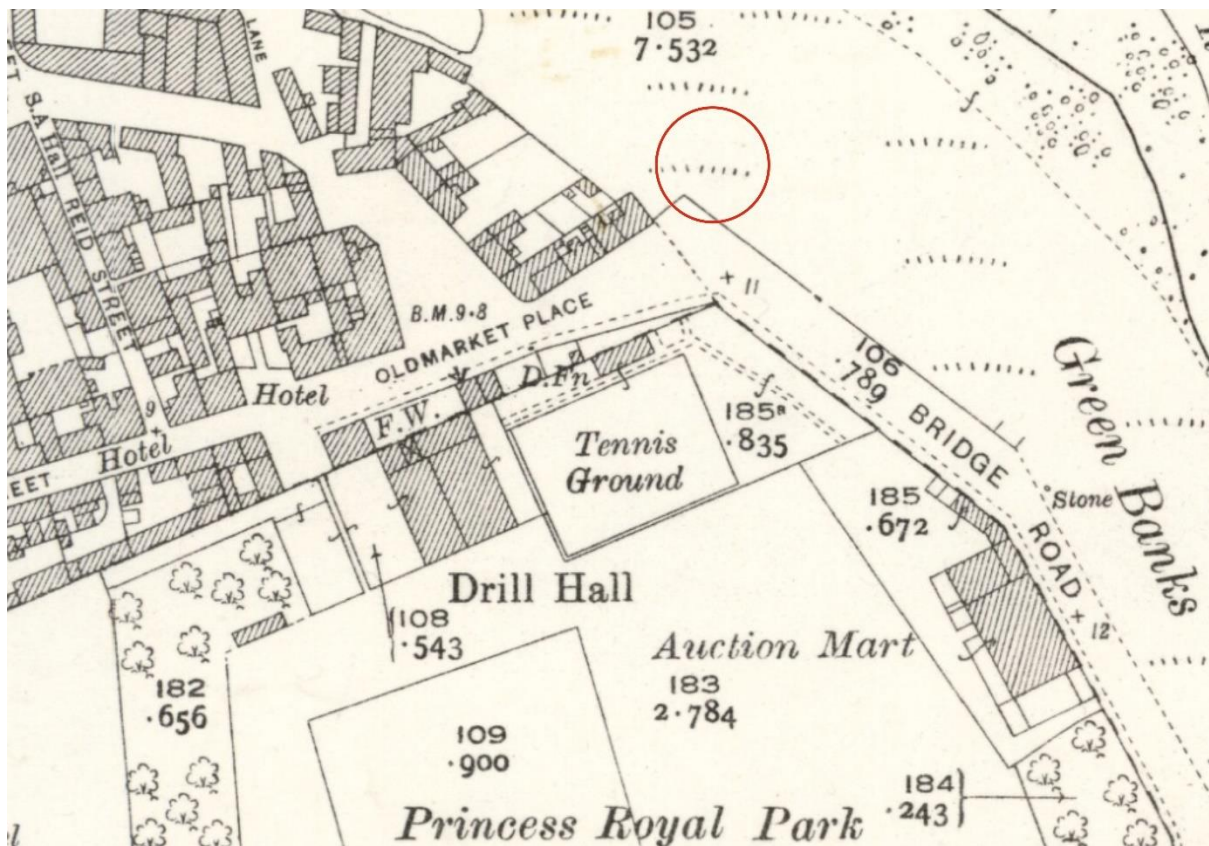


Illus 6 First Edition OS map showing site outlined in red (copyright National Library of Scotland)  
Banffshire IV.12 (Banff) Survey date: 1867 Publication date: 1868





Illus 7 Second Edition OS map showing site outlined in red (copyright National Library of Scotland)  
 Banffshire IV.12 (Banff) Publication date: 1904 Revised: 1902



Illus 8 Third Edition OS map showing site outlined in red (copyright National Library of Scotland)  
 Banffshire IV.12 (Banff) Publication date: 1930 Revised: 1929

### APPENDIX 3 PHOTOS

PHOTO ID	DIRECTION FACING	COMMENTS
CA447-1	SW	Trenching commencing
CA447-2	NE	Junction 'pit' completed
CA447-3	SSW	Hand dug sump to run cable below retainer wall at deepest point of excavation.
CA447-4	SW	Main cable trench completed
CA447-5	SW	Excavation completed for new cable trench
CA447-6	SW	Excavation completed for new cable trench
CA447-7	--	Fragment of glass bottle recovered from sump area with dimpled base partially marked [S.MACVEY & PATER... CA(?)MAKERS C...]
CA447-8	--	Completely intact ceramic lid with vent hole in top, also from sump area. No markings.
CA447-9	--	Brilliant blue hand-blown slender glass bottle recovered from trench area measuring 30mm dia at base and 20mm at neck, standing 157mm tall. No markings. Also recovered from sump area.

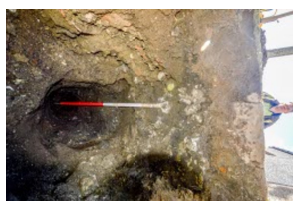




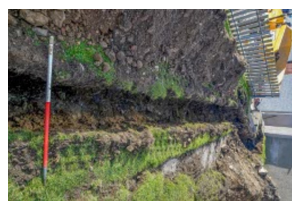
CA447-1



CA447-2



CA447-3



CA447-4



CA447-5



CA447-6



CA447-7



CA447-8



CA447-9