

**Land Adjoining Benromach Distillery,
Waterford Road, Forres, IV36 3AD
Report on a Metal-detector Survey and Evaluation
Phases 1A and 1B
(Moray Council planning application 18/00811/APP)**



**Dr Robert Lenfert
Cameron Archaeology
08-08-2019**

CONTENTS

1	Background.....	4
2	Archaeological Background	5
3	The Metal Detector Survey	7
4	The Evaluation	9
5	Discussion and Conclusions	12
6	References	12
7	Acknowledgements.....	12
	Appendix 1 Archaeological and historical sites within 0.5km of the proposed site (HES and Aberdeenshire HER online).....	13
	Appendix 2 Maps	14
	Appendix 3 Photographs.....	18

TABLES

Table 1	Metalwork Finds Locations (WGS84)	9
Table 2	Evaluation trench locations and data.....	10

ILLUSTRATIONS

Cover: Evaluation trenching in progress

Illus 1	Location plan (Contains Ordnance Survey data © Crown copyright and database right 2018)	4
Illus 2	Site plan showing proposed development (<i>copyright LDN Architects</i>).....	5
Illus 3	GPS locations of metal detector finds (<i>c. GoogleEarth/Digital Globe 2019</i>).	7
Illus 4	The finds from the metal detector survey in the area containing trenches 1-14.	8
Illus 5	The finds from the metal-detecting survey in the area containing trenches 15-19.	8
Illus 6	Location of evaluation trenches at Benromach Phases 1A and 1B.	10
Illus 7	Gordon's map of c1636-52 showing approximate area of site outlined in red (<i>copyright National Library of Scotland</i>).....	14
Illus 8	Blaeu's map of 1654 showing approximate area of site outlined in red (<i>copyright National Library of Scotland</i>).....	14
Illus 9	Moll's map of 1745 showing approximate area of site outlined in red (<i>copyright National Library of Scotland</i>).....	15
Illus 10	Roy's map of 1747-55 showing approximate area of site outlined in red (<i>copyright National Library of Scotland</i>).....	15
Illus 11	Thomson's map of 1826 showing approximate area of site outlined in red (<i>copyright National Library of Scotland</i>).....	16
Illus 12	First Edition OS map showing site outlined in red (copyright National Library of Scotland) Elginshire & Nairnshire (Det. No.1) X.8 (Combined) Survey date: 1868 Publication date: 1895.....	17

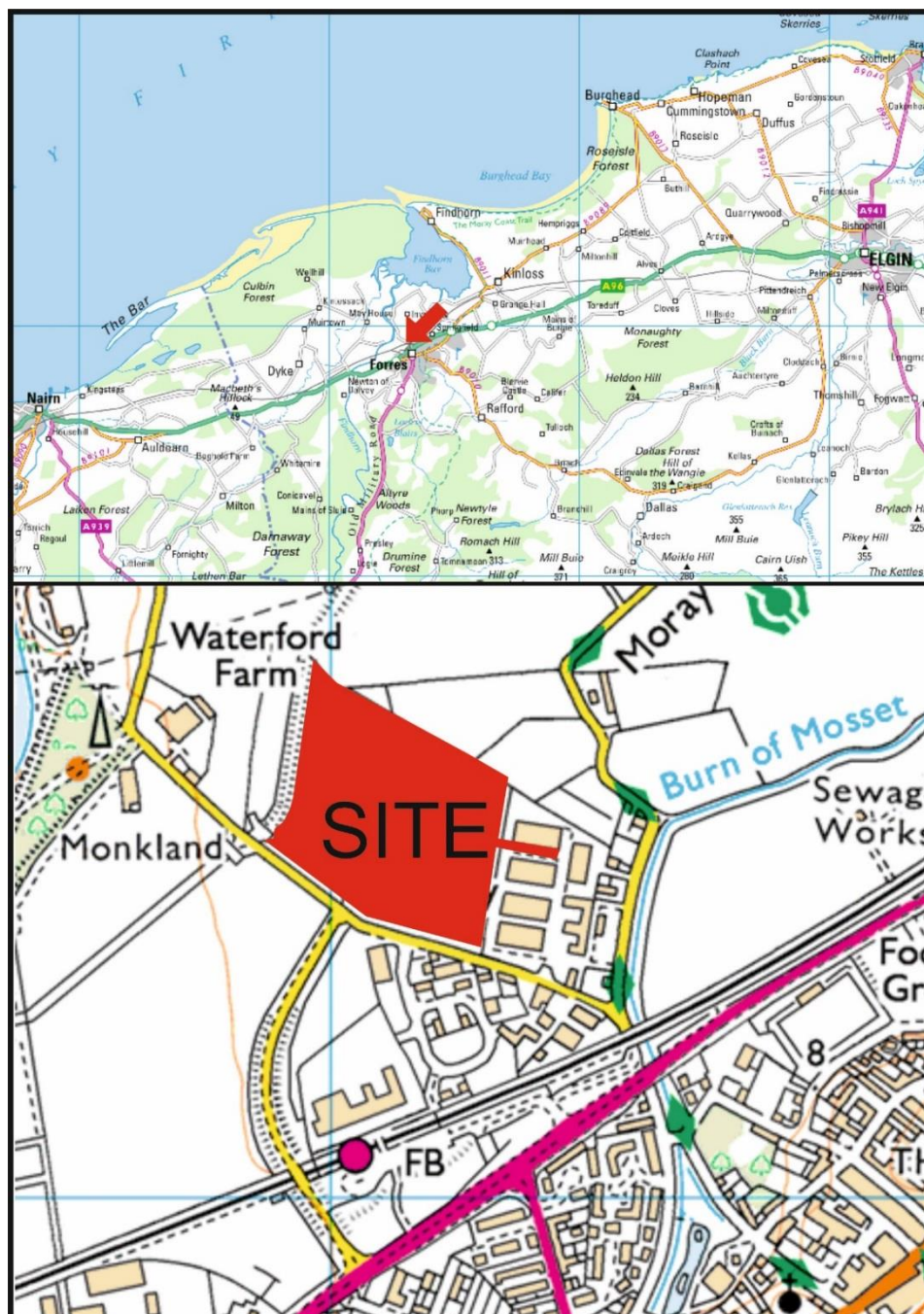
SUMMARY

On July 15th, 2019, a metal-detector survey using a pulse-induction metal detector was carried out over the area to be evaluated. Thirty-two objects were recovered, considered to be of a modern agricultural nature. One small rectangular lead plate was recovered, but no marks or inscriptions are visible and it appears to be unmarked. Four of the finds appear to be delaminated metal from a larger parent object, most likely a plough tine or tooth. One hand-wrought horseshoe, along with a substantial hook with eyelet and two bolts or heavy rivets were also recovered.

On July 16th, 17th and August 7th, 2019, a 7-10% archaeological evaluation was carried out with a 14 ton excavator using a 2m bladed bucket. The potential for archaeological features in the general area is high but the metal detector survey and archaeological evaluation trenching did not reveal any finds or features of archaeological significance. This is perhaps a reflection of the intensity of agricultural activity which has taken place in the project area over at least two and a half centuries, as indicated by the Roy Map below and the subsequent nature of the metal detecting finds. It is therefore recommended that no further archaeological mitigation is deemed necessary during the current planning application.

1 Background

- 1.1 The site (Illus 1) is located on the WNW side of Benromach Distillery, Forres. It is centred on NGR NJ 03030 59492, at 5-10m OD in the parish of Forres.
- 1.2 The work was commissioned by LDN Architects. An application 18/00811/APP to Moray Council for Development of a 4.7 hectare site to the WNW of the existing distillery to deliver 11 new cask warehouses new access formation of pond and associated landscaping was approved on 13.11.18 with requirement for a metal detector survey followed by a 7-10% archaeological field evaluation.
- 1.3 All the archaeological work was carried out in the context of Scottish Planning Policy (SPP) Planning Advice Note (PAN 2/2011) and Historic Environment Scotland's Policy Statement (HESPS) which state that archaeological remains should be regarded as part of the environment to be protected and managed.



Illus 1 Location plan (Contains Ordnance Survey data © Crown copyright and database right 2018)



Illus 2 Site plan showing proposed development (copyright LDN Architects).

2 Archaeological Background

The Historic Environment Record (HER) and Canmore (HES) were consulted online within 1km (scheduled monuments) and 0.5km (non-designated sites) of the proposed development.

- 2.1 There are no Scheduled Monuments within 1km of the proposed development.
- 2.2 Middlefield Cropmarks of ring ditches and dark circular solid cropmarks, some of which may represent hut stances (SMR NJ05NW0074). Also a possible ring ditch and other blobs are visible on aerial photographs (SMR NJ06SW0033).
- 2.3 A watching brief was carried out at Waterford Farm by HAS in January 2104 during groundworks for service trenches associated with the Forres Flood Alleviation Scheme. No archaeological features or artefacts were recorded (SMR NJ05NW0346).
- 2.4 An oval enclosure and other cropmarks are visible on aerial photographs (SMR NJ05NW0059). Trial trenching evaluation of this site proposed in 2010 by AOC as part of the River Findhorn-Pilmuir Flood Alleviation Scheme. Four trenches are proposed (4 trenches each 45 m by 2 m) totalling 360 square metres, or 10%, of the total site.
- 2.5 An area of rig and furrow visible on aerial photographs (SMR NJ05NW0058) at Waterford. Also at Waterford linear cropmarks and possible ring of pits are visible as cropmarks on aerial photographs (SMR NJ05NW0061). Also a quadrilateral enclosure is visible as a cropmark on aerial photographs (SMR NJ05NW0060).

- 2.6 At Waterford Road there are several circular enclosures with possible internal features showing as cropmarks, scattered over two fields. They may represent hut stances. One appears to be a double circular enclosure (SMR NJ05NW0033).
- 2.7 Benromach Distillery (SMR NJ05NW0045), founded by Duncan McCallum and F.W. Brickman as 'Glenromach', and built in 1898-9 by Charles C Doig. It is now owned and operated by Gordon and Macphail, and known as Benromach Distillery. Construction work started at the site of Benromach Distillery in 1898, however, due to the depression in the Scotch whisky industry in 1898, the distillery did not start producing whisky until 1900. It closed the same year due to a lack of money. In 1911 the distillery was acquired by the London based Harvey McNair and Co who continued distilling until the onset of the First World War. After the war, the distillery was acquired by Benromach Distillery Ltd and was run by this new private company until 1925. In 1938 Benromach was acquired by Associated Scottish Distilleries Ltd which later became a part of Scottish Malt Distillers Ltd. Between 1966 and 1974 the distillery was modernised and continued to run until 1983 when the distillery was officially closed. In 1993 Gordon and Macphail took over the site and in 1997 they started to restore the distillery to a working order. The design of the distillery was changed slightly to allow it to be operated by one man. Finally in 1998 the distillery was officially reopened by Charles, Prince of Wales, and bottling of the new malt started in 2004. It is a complex of one- and two-storey buildings, of various dates, with a pyramidal-roofed malting kiln and a neat stillhouse, and a large free-standing red-brick chimney to vent the coal-fired stills. The malt barn (Listed Category B) is a three-storey, 12-bay brick barn with regular fenestration. Each bay is defined by brick pilaster strips, and there is a West Highland slate roof. It has segmental headed windows of 12 pane sashes to the gables, and with six-pane with shuttering to the lower portion of the long elevations. Internally each floor is supported by 11 pairs of cast-iron piers. There is a warehouse dated from 1898, with alterations in 1950-1. It was the surviving part of a range of warehouses, the other three having been demolished in 1987. A garage was built in 1937. A building survey of No. 2 cask warehouse and a garage was carried out in 2014 by S Farrell prior to its proposed demolition (Farrell 2015, 138).
- 2.8 At Mossat Road is a signal box, still in use, depicted on OS 2nd edition map (SMR NJ05NW0169).
- 2.9 Pill-box dating from World War II (SMR NJ05NW0093). It sits on the northern side of the railway line, near a level-crossing. The pillbox measures about 12 feet across and is six sided with a door with five loopholes. A building survey of the pillbox was carried out by Headland Archaeology in August 2016 ahead of proposed demolition. The pillbox is a Type 22 structure, hexagonal in plan with a single entrance on the southeast wall and rifle loopholes in the remaining walls. The walls were constructed of large squared masonry blocks with a thick roof of prefabricated concrete sheets.
- 2.10 A series of trial pits were excavated across several sites along the River Findhorn and the W side of Forres between September 2008 and April 2009 as part of the River Findhorn-Pilmuir Flood Alleviation Scheme. Their excavation was monitored by AOC. No finds or features of archaeological significance were observed (SMR NJ05NW0158).
- 2.11 A lead Papal bulla of Pope Nicolas III (1277-1280). Bullae were seals attached to Papal documents (bulls) and typically they depict the busts of the Saints Peter and Paul on the obverse and the name of the issuing Pope on the reverse. This example is in comparatively good condition, being complete and legible on both faces (HES NJ05NW 422).
- 2.12 A watching brief was undertaken, 6–17 June 2016, during construction of a new road link between the A96 and Waterford Road. Several postholes and pits were uncovered and excavated, including a series of pits relating to the on-site smelting and smithing of iron ore, and the disposal of waste materials, both agricultural and industrial. These appeared to be Iron Age in date, indicating the possibility of Iron Age settlement in the vicinity (Gaunt 2017, 122).
- 2.13 The proposed development site has been farmland since the earliest maps (Illus 3-9) and there are no known sites within the site boundaries.

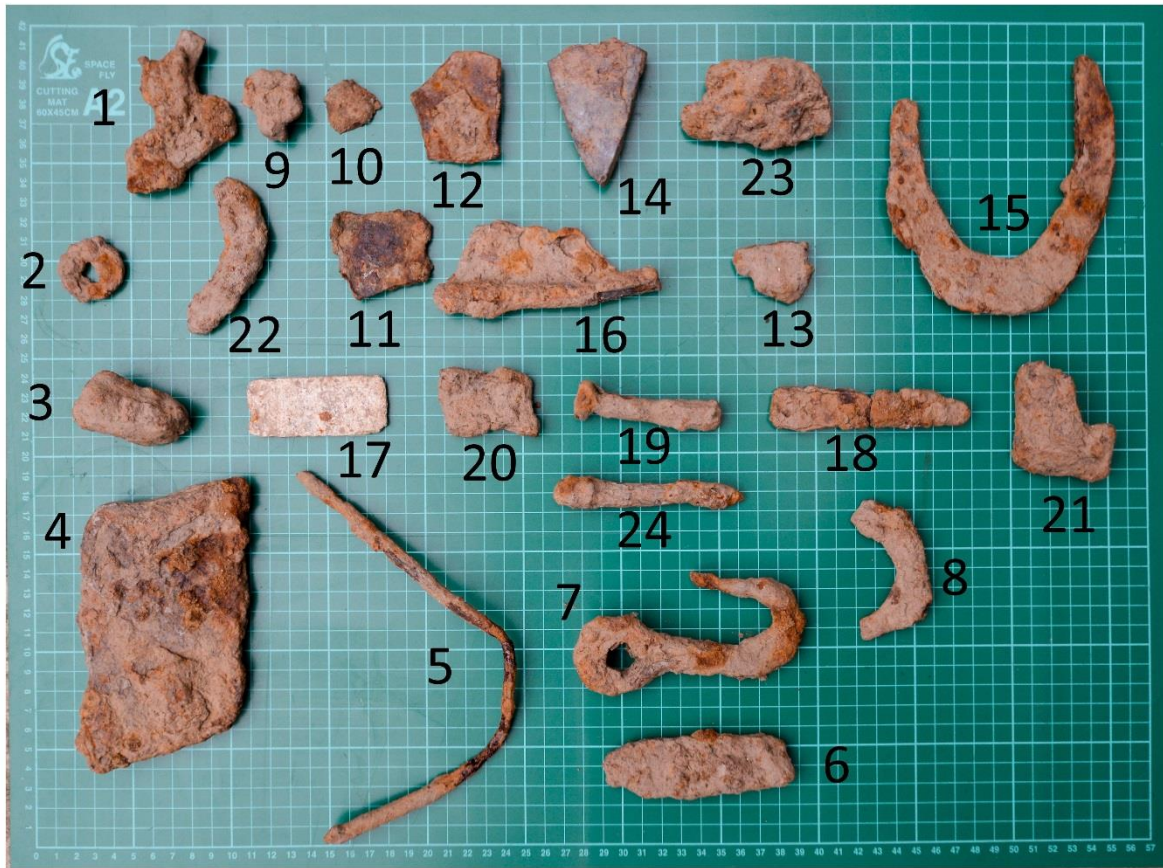


Illus 3 GPS locations of metal detector finds (c. GoogleEarth/Digital Globe 2019).

3 The Metal Detector Survey

On July 15th, 2019, a metal-detector survey (Illus 4) using a pulse-induction metal detector was carried out over the area to be evaluated. Thirty-two objects were recovered, considered to be of a modern agricultural nature. One small rectangular lead plate was recovered, but no marks or inscriptions are visible and it appears to be unmarked. Four of the finds appear to be delaminated metal from a larger parent object, most likely a plough tine or tooth.

One hand-wrought horseshoe, along with a substantial hook with eyelet and two bolts or heavy rivets were also recovered.



Illus 4 The finds from the metal detector survey in the area containing trenches 1-14.



Illus 5 The finds from the metal-detecting survey in the area containing trenches 15-19.

Table 1 Metalwork Finds Locations (WGS84)

Find ID	Latitude	Longitude
1	57°36'49.11"N	3°37'24.91"W
2	57°36'49.42"N	3°37'25.65"W
3	57°36'48.78"N	3°37'25.48"W
4	57°36'50.18"N	3°37'24.26"W
5	57°36'50.34"N	3°37'24.80"W
6	57°36'51.29"N	3°37'25.68"W
7	57°36'51.90"N	3°37'24.84"W
8	57°36'51.57"N	3°37'23.81"W
9	57°36'53.02"N	3°37'24.40"W
10	57°36'53.02"N	3°37'24.40"W
11	57°36'53.02"N	3°37'24.40"W
12	57°36'53.02"N	3°37'24.40"W
13	57°36'54.19"N	3°37'23.32"W
14	57°36'55.63"N	3°37'24.24"W
15	57°36'54.39"N	3°37'25.16"W
16	57°36'54.20"N	3°37'25.11"W
17	57°36'52.38"N	3°37'26.83"W
18	57°36'49.06"N	3°37'27.36"W
19	57°36'50.75"N	3°37'29.32"W
20	57°36'52.22"N	3°37'27.97"W
21	57°36'53.51"N	3°37'27.96"W
22	57°36'55.40"N	3°37'27.44"W
23	57°36'56.80"N	3°37'26.53"W
24	57°36'56.46"N	3°37'26.01"W
25	57°36'50.27"N	3°37'30.48"W
26	57°36'50.99"N	3°37'30.14"W
27	57°36'50.76"N	3°37'30.97"W
28	57°36'51.26"N	3°37'33.48"W
29	57°36'52.05"N	3°37'34.56"W
30	57°36'54.05"N	3°37'33.12"W
31	57°36'57.31"N	3°37'31.24"W
32	57°36'57.85"N	3°37'30.03"W

4 The Evaluation

On July 16th, 17th and August 7th, 2019, a 7-10% archaeological evaluation was carried out with a 14 ton excavator using a 2m bladed bucket. An initial area calculation using GPS returned a 'trenchable' area of 2.9Ha keeping a safe working distance from buried electrics. In total, 19 evaluation trenches measuring 1,269 linear metres in total (Illus 5) were excavated which covered 8.75% of the 2.9Ha site. Weather conditions were fine overall and the field was in mixed vegetation, largely consisting of gorse and thistle with various other wild plants in bloom. Topsoil depths remained largely consistent in the 300-350mm range throughout the evaluation area, perhaps reflecting the lengthy period of agricultural use as indicated by the OS maps. The topsoil overlies a mid- to dark-brown sandy clay loam with minor stone or pebble inclusions. No finds or features were noted.



Illus 6 Location of evaluation trenches at Benromach Phases 1A and 1B.

Table 2 Evaluation trench locations and data

Trench No	Alignment	Length (m)	Long/Lat	Description
1	NNE-SSW	82	57°36'51.60"N 03°37'23.50"W-- 57°36'49.03"N 03°37'24.54"W	No finds or features. Topsoil to max 0.4m. Minimal stones and small pebbles.
2	ESE-WNW	74	57°36'51.63"N 03°37'24.27"W -- 57°36'52.21"N 03°37'28.71"W	No finds or features. Topsoil to max 0.35m. Minimal stones and small pebbles.

3	ESE-WNW	76	57°36'50.94"N 3°37'24.46"W – 57°36'51.47"N 3°37'28.91"W	No finds or features. Topsoil to max 0.35m.
4	ESE-WNW	76.5	57°36'50.42"N 3°37'24.63"W – 57°36'50.93"N 3°37'29.16"W	No finds or features. Topsoil to max 0.4m. Mottled sandy inclusions <0.15m/dia. probable bioturbation.
5	ESE-WNW	72.5	57°36'49.87"N 3°37'24.95"W – 57°36'50.42"N 3°37'29.28"W	No finds or features. Topsoil to max 0.35m. Stones <0.2m lightly dispersed in ESE end of trench.
6	ESE-WNW	68	57°36'49.28"N 3°37'25.33"W – 57°36'49.89"N 3°37'29.36"W	No finds or features. Topsoil to max 0.4m. Stones <0.2m lightly dispersed in ESE end/centre of trench.
7	ESE-WNW	78	57°36'52.39"N 3°37'23.92"W – 57°36'52.84"N 3°37'28.48"W	No finds or features. Topsoil to max 0.4m. Lighter sandy deposits towards centre of trench. Again, minimal stone inclusions.
8	ESE-WNW	70	57°36'53.27"N 3°37'24.01"W – 57°36'53.72"N 3°37'28.19"W	No finds or features. Topsoil to max 0.42-0.45m. Faint traces of modern plough marks.
9	ESE-WNW	69	57°36'53.86"N 3°37'23.87"W – 57°36'54.36"N 3°37'27.97"W	No finds or features. Topsoil to max 0.4m. Faint traces of modern plough marks/scarring. Coarse grit/slight stony deposits <0.3m in areas towards ESE end of trench.
10	ESE-WNW	67	57°36'54.41"N 3°37'23.82"W – 57°36'54.84"N 3°37'27.83"W	No finds or features. Topsoil to max 0.45m. Very homogenous, very few stones or inclusions.
11	ESE-WNW	72	57°36'54.87"N 3°37'23.51"W – 57°36'55.29"N 3°37'27.78"W	No finds or features. Topsoil to max 0.35m. More pronounced coarse gravel/small stone inclusions in ESE end of trench, changing to more homogenous sandy soils over natural.
12	ESE-WNW	73.5	57°36'55.31"N 3°37'23.40"W – 57°36'55.85"N 3°37'27.71"W	No finds or features. Topsoil to max 0.35m. Lighter belts of sandy material running across trench in a broadly N-S direction.
13	SE-NW	72.5	57°36'55.73"N 3°37'23.47"W – 57°36'56.71"N 3°37'27.44"W	No finds or features. Topsoil to max 0.4m. Modern plough scars running E-W across central portion of trench.
14	NNE-SSW	75	57°36'55.24"N 03°37'22.29"W – 57°36'52.86"N 03°37'23.30"W	No finds or features. Topsoil to max 0.45m. Very minimal stone inclusions, soils largely homogenous in nature.
15	SE-NW	50	57°36'50.57"N 3°37'31.65"W – 57°36'51.42"N 3°37'34.21"W	No finds or features. Topsoil to max 0.3m. Higher clay content than previous trenches. Still, minimal stone inclusions. Modern debris in upper topsoil.

16	SE-NW	50	57°36'51.81"N 3°37'34.47"W – 57°36'51.02"N 3°37'31.83"W	No finds or features. Topsoil to max 0.35m. Modern plough scars running roughly NE-SW.
17	N-S	83	57°36'55.05"N 3°37'33.36"W – 57°36'52.43"N 3°37'34.01"W	No finds or features. Topsoil to max 0.4m. Stones <0.2m sparse throughout trench, otherwise homogenous.
18	ENE-SSW	25	57°36'57.77"N 3°37'31.22"W – 57°36'57.53"N 3°37'32.71"W	No finds or features. Topsoil to max 0.35m. Very homogenous, minimal stones.
19	E-W	35	57°36'57.97"N 3°37'30.60"W -- 57°36'57.96"N 3°37'32.76"W	No finds or features. Topsoil to max 0.4m. Modern plough scars NE-SW at E end of trench.

5 Discussion and Conclusions

While Section 2 above highlights the potential for archaeological features in the general area, the metal detector survey and archaeological evaluation trenching did not reveal any finds or features of archaeological significance. This is perhaps a reflection of the intensity of agricultural activity which has taken place in the project area over at least two and a half centuries, as indicated by the Roy Map below (Illus 7) and the subsequent nature of the metal detecting finds. It is therefore recommended that no further archaeological mitigation is deemed necessary during the current planning application.

6 References

Farrell, S. (2015) *Moray, Benromach Distillery, Survey, Discovery Excav Scot, New, vol. 15, 2014.* Cathedral Communications Limited, Wiltshire, England.

Gaunt, J. (2017) *Waterford Road, Forres, Watching brief, Discovery Excav Scot, New, vol. 17, 2016.* Cathedral Communications Limited, Wiltshire, England.

HAS (2014) Forres Flood Alleviation Scheme Watching Brief Final Report. Lodged with Moray SMR.

7 Acknowledgements

Thanks to Gillian Mackenzie, LDN Architects for initiating this project and to Claire Herbert, Aberdeenshire Council Archaeology Service for her advice during this work.

Appendix 1 Archaeological and historical sites within 0.5km of the proposed site (HES and Aberdeenshire HER online)

Dataset	Dataset UID	Name	Classification
HERMORAY	NJ05NW0074	Middlefield	Cropmarks
HERMORAY	NJ06SW0033	Middlefield	Cropmarks
HERMORAY	NJ05NW0346	Waterford Farm	Watching brief
HERMORAY	NJ05NW0059	Waterford	Cropmarks, enclosure
HERMORAY	NJ05NW0058	Waterford	Rig and furrow
HERMORAY	NJ05NW0061	Waterford	Cropmarks
HERMORAY	NJ05NW0060	Waterford	Cropmarks
HERMORAY	NJ05NW0033	Waterford Road, Forres	Cropmarks, enclosure
HERMORAY	NJ05NW0045	Benromach Distillery, Forres	Distillery
HERMORAY	NJ05NW0169	Mosset Road, Forres	Signal box
HERMORAY	NJ05NW0093	Forres	Pill-box
HERMORAY	NJ05NW0158	River Findhorn Fas	Trial pits
RCAHMS	354905	Forres, Waterford Road	Pit(s) (iron Age), Post Hole(s) (iron Age)
RCAHMS	81615	Forres, Invererne Road	Pillbox (20th Century)
RCAHMS	134296	Waterford	Cropmark(s) (period Unknown), Enclosure(s) (period Unassigned), Rig And Furrow (medieval)
RCAHMS	172852	Forres, Waterford Road, Glenromach Distillery, Malt Barn	Barn (period Unassigned)
RCAHMS	317813	Forres, Mosset Road, Signal Box	Signal Box (19-20th Century)
RCAHMS	108409	Forres, Waterford Road, Benromach Distillery	Distillery (period Unassigned), Glenromach Distillery
RCAHMS	242083	Forres, Waterford Road, Depot	Depot (modern), Mills, Coal And Agricultural Products
RCAHMS	15861	Forres, Waterford Road, Glenromach Distillery, Hand Crane	Crane (post Medieval)
RCAHMS	108408	Mountford	Farmhouse (period Unassigned), Farmstead (period Unassigned)
RCAHMS	108407	Waterford Farm	Farmhouse (period Unassigned), Farmstead (period Unassigned)
RCAHMS	76988	Waterford	Rig And Furrow (medieval)
RCAHMS	134295	Waterford	Enclosure (period Unassigned)
RCAHMS	76989	Waterford	Cropmark(s) (period Unknown), Enclosure (period Unassigned)(possible)
RCAHMS	333667	Forres	Findspot, Bulla (lead Alloy)(medieval)

Appendix 2 Maps



Illus 7 Gordon's map of c1636-52 showing approximate area of site outlined in red (copyright National Library of Scotland)



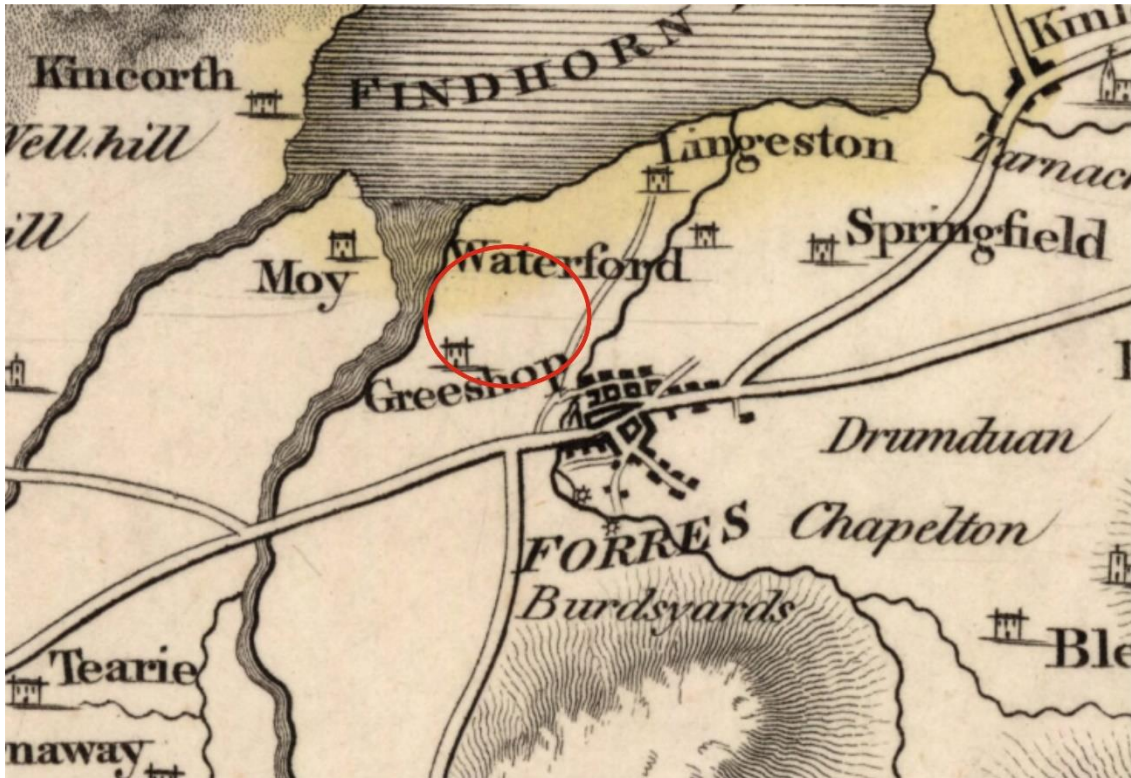
Illus 8 Blaeu's map of 1654 showing approximate area of site outlined in red (copyright National Library of Scotland)



Illus 9 Moll's map of 1745 showing approximate area of site outlined in red (copyright National Library of Scotland)



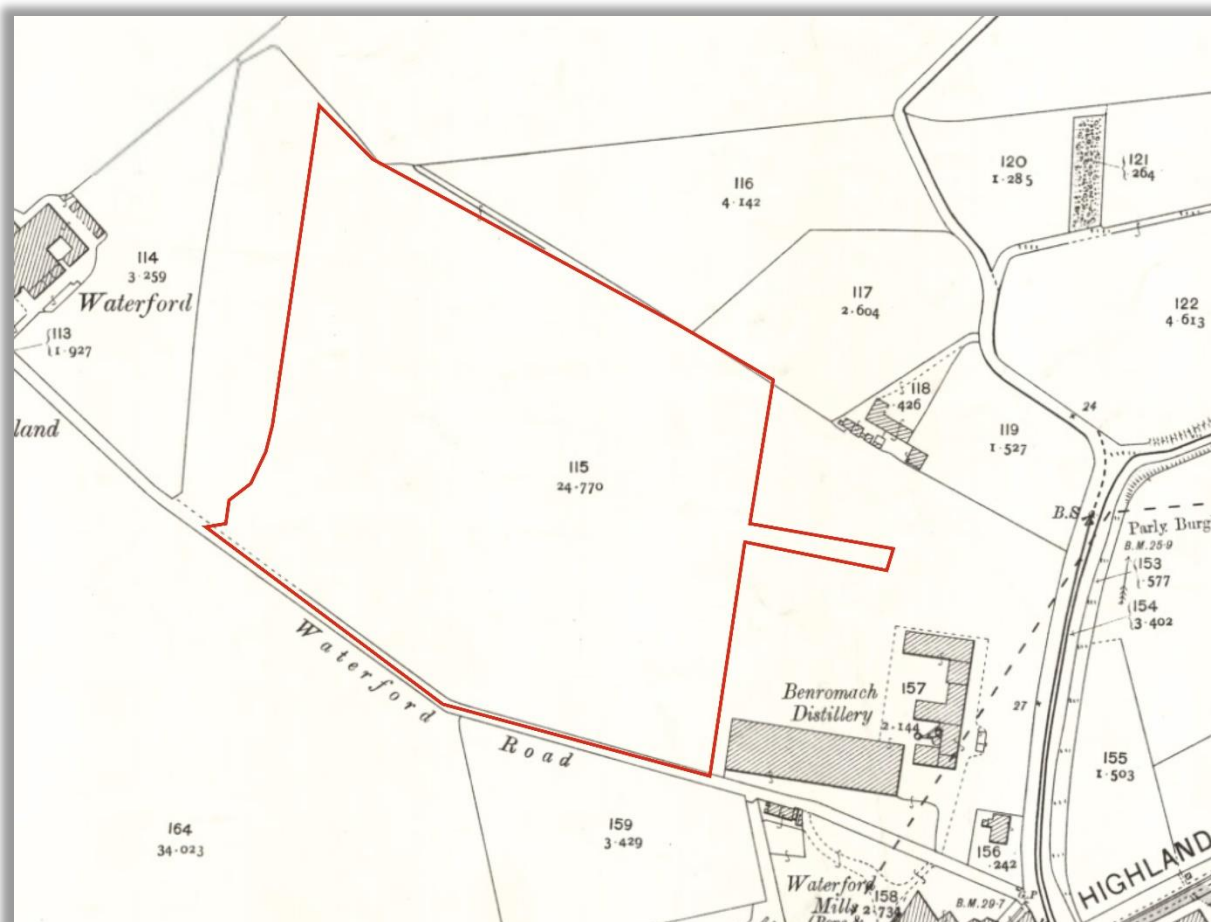
Illus 10 Roy's map of 1747-55 showing approximate area of site outlined in red (copyright National Library of Scotland).



Illus 11 Thomson's map of 1826 showing approximate area of site outlined in red (copyright National Library of Scotland).



Illus 12 First Edition OS map showing site outlined in red (copyright National Library of Scotland) Elginshire & Nairnshire (Det. No.1) X.8 (Combined) Survey date: 1868 Publication date: 1895



Illus 9 Second Edition OS map showing site outlined in red (copyright National Library of Scotland) Elginshire X.8 (Dyke and Moy; Forres) Publication date: 1905 Revised: 1904

Appendix 3 Photographs

Photo ID	Direction Facing	Comments
CA473 Benromach-2	N	Trench 1 commencing
CA473 Benromach-3	NE	Trench 1 in progress
CA473 Benromach-4	NNE	Trench 1 completed
CA473 Benromach-6	W	Trench 2 in progress
CA473 Benromach-7	E	Trench 2 completed
CA473 Benromach-9	W	Trench 3 completed
CA473 Benromach-11	W	Trench 4 in progress
CA473 Benromach-12	E	Trench 4 completed
CA473 Benromach-14	E	Trench 5 in progress

CA473 Benromach-15	E	Trench 5 completed
CA473 Benromach-18	W	Trench 6 in progress
CA473 Benromach-21	E	Trench 7 in progress
CA473 Benromach-22	E	Trench 7 nearing completion
CA473 Benromach-25	W	Trench 8 in progress
CA473 Benromach-28	W	Trench 9 commencing
CA473 Benromach-29	E	Trench 9 in progress
CA473 Benromach-32	E	Trench 10 completed
CA473 Benromach-33	W	Trench 10 completed
CA473 Benromach-34	W	Trench 10 completed
CA473 Benromach-37	E	Trench 11 in progress
CA473 Benromach-40	WSW	Trench 12 in progress
CA473 Benromach-43	E	Trench 13 in progress
CA473 Benromach-46	S	Trench 14 in progress
CA473 Benromach-47	S	Trench 14 in progress
CA473 BenromachMDF- 1	--	The finds from the metal detector survey 1 of 2
CA473b-1	NW	Trench 15 commencing
CA473b-2	NW	Trench 15 in progress
CA473b-3	SE	Trench 15 completed
CA473b-5	SE	Trench 15 completed
CA473b-7	NW	Trench 16 in progress
CA473b-8	NW	Trench 16 nearing completion
CA473b-10	NNE	Trench 17 commencing
CA473b-11	NNE	Trench 17 nearing completion
CA473b-13	ENE	Trench 18 commencing
CA473b-15	E	Trench 19 commencing
CA473b-18	E	Trench 19, backfilling in progress
CA473 Met Dec Finds 25-32	--	The finds from the second phase of metal detecting in trench areas 15-19



CA473 Benromach-2



CA473 Benromach-3



CA473 Benromach-4



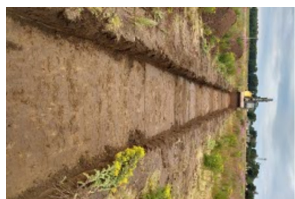
CA473 Benromach-6



CA473 Benromach-7



CA473 Benromach-9



CA473 Benromach-11



CA473 Benromach-12



CA473 Benromach-14



CA473 Benromach-15



CA473 Benromach-18



CA473 Benromach-21



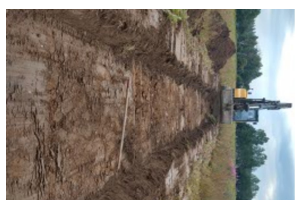
CA473 Benromach-22



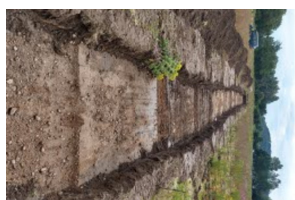
CA473 Benromach-25



CA473 Benromach-28



CA473 Benromach-29



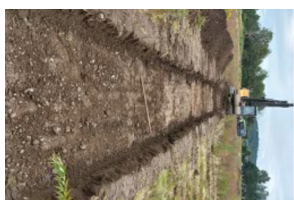
CA473 Benromach-32



CA473 Benromach-33



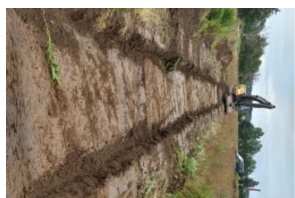
CA473 Benromach-34



CA473 Benromach-37



CA473 Benromach-40



CA473 Benromach-43



CA473 Benromach-46



CA473 Benromach-47



CA473 BenromachMDF-1



CA473 Met Dec Finds 25-32



CA473b-1



CA473b-2



CA473b-3



CA473b-5



CA473b-7



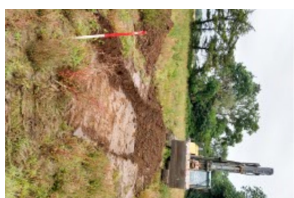
CA473b-8



CA473b-10



CA473b-11



CA473b-13



CA473b-15



CA473b-18