



The Quadrangle and Link Building, St Clare, Cornwall Historic Building Record

Cornwall Archaeological Unit

Report No: 2017R032

The Quadrangle and Link Building, St Clare, Penzance, Cornwall

Historic Building Record

Client	Rosmellyn Surgery
Report Number	2017R032
Date	May 2017
Status	Final
Report author(s)	Jo Sturgess
Checked by	Andy Jones
Approved by	Andy Jones

Cornwall Archaeological Unit

Cornwall Council

Fal Building, County Hall, Treyew Road, Truro, Cornwall, TR1 3AY

Tel: (01872) 323603

Email: enquiries@cau.org.uk Web: www.cau.org.uk

Acknowledgements

This study was commissioned by James Stanger of Bilfinger GVA on behalf of Rosmellyn Surgery, Penzance and carried out by Cornwall Archaeological Unit, Cornwall Council.

Fieldwork, finished drawings and archiving were undertaken by Francis Shepherd and Jo Sturgess.

The Project Manager was Jo Sturgess.

The views and recommendations expressed in this report are those of Cornwall Archaeological Unit and are presented in good faith on the basis of professional judgement and on information currently available.

Freedom of Information Act

As Cornwall Council is a public authority it is subject to the terms of the Freedom of Information Act 2000, which came into effect from 1st January 2005.



Cornwall Archaeological Unit is a Registered Organisation with the
Chartered Institute for Archaeologists

Cover illustration

The Quadrangle looking north-west.

© **Cornwall Council 2017**

No part of this document may be reproduced, stored in a retrieval system, or transmitted in any form or by any means without the prior permission of the publisher.

Contents

1	Summary	1
2	Introduction	3
2.1	Project background	3
2.2	Aims	3
2.3	Methods	3
2.3.1	Desk-based assessment	3
2.3.2	Fieldwork	3
2.3.3	Post-fieldwork	4
3	Location and setting	4
4	Designations	4
5	Site history	4
6	The Quadrangle (1938)	5
6.1	General description and external elevations	5
6.2	Interior ground floor	6
6.2.1	Room 1	6
6.2.2	Room 2	6
6.2.3	Room 3	7
6.2.4	Room 4	7
6.2.5	Room 5	7
6.2.6	Room 6	8
6.2.7	Rooms 7 and 8	8
6.2.8	Room 9a	8
6.2.9	Room 9b	9
6.2.10	Room 9c	9
6.2.11	Room 10	10
6.2.12	Room 11	10
6.2.13	Room 12	10
6.2.14	Room 13	11
6.2.15	Room 14	11
6.2.16	Room 15	11
6.2.17	Room 16a	12
6.2.18	Room 16b	12
6.2.19	Room 17	12
6.2.20	Room 18	13
6.2.21	Room 19	13
6.2.22	Room 20	14
6.2.23	Room 21	14
6.2.24	Room 22	14
6.2.25	Room 23	14
6.2.26	Room 24	15
6.2.27	Room 25	15
6.2.28	Room 26	15
6.2.29	Room 27	16

6.2.30	Room 28	16
6.2.31	Room 29	17
6.2.32	Room 30	17
6.2.33	Room 31	17
6.2.34	Room 32	18
6.2.35	Room 33	18
6.3	Interior first floor	19
6.3.1	Room 34	19
6.3.2	Room 35	19
6.3.3	Room 36	20
6.3.4	Room 37	20
6.3.5	Room 38	20
6.3.6	Room 39	21
6.3.7	Room 40	21
6.3.8	Room 41	22
6.3.9	Room 42	22
6.3.10	Room 43	22
6.3.11	Room 44	23
6.3.12	Room 45	23
6.3.13	Room 46	23
6.3.14	Room 47	24
6.3.15	Room 48	24
6.3.16	Room 49	24
6.3.17	Room 50	25
6.3.18	Room 51	25
6.3.19	Room 52	26
6.3.20	Room 53	26
6.3.21	Room 54	27
6.3.22	Room 55	27
6.3.23	Room 56	28
6.3.24	Room 57	28
6.3.25	Room 58	28
6.3.26	Room 59	29
6.4	Interior basement	29
6.4.1	Room 60	29
7	The Link Building	30
7.1	General description	30
7.2	Ground floor	30
7.2.1	Room 61	30
7.2.2	Room 62	31
7.2.3	Room 63	31
7.2.4	Room 64	31
7.2.5	Room 65	31
7.2.6	Room 66	31
7.2.7	Room 67	32

7.2.8	Room 68	32
7.2.9	Room 69	32
7.2.10	Room 70	32
7.2.11	Room 71	32
7.3	First floor	33
7.3.1	Room 72	33
8	References	33
8.1	Primary sources	33
8.2	Publications	33
8.3	Websites	33
9	Project archive	33

List of Figures

Fig 1 Location map.

Fig 2 Site extent.

Fig 3 RAF vertical photograph (1946) showing the Quadrangle.

Fig 4 Quadrangle: North range, east end of north elevation.

Fig 5 Quadrangle: North range, west end of north elevation.

Fig 6 Quadrangle: North range, east elevation.

Fig 7 Quadrangle: North range, south elevation.

Fig 8 Quadrangle: North range, west elevation.

Fig 9 Quadrangle: South-east range, south-east elevation.

Fig 10 Quadrangle: South-east range, north-west elevation.

Fig 11 Quadrangle: South-east range, north-west elevation and porch.

Fig 12 Quadrangle: South-west range, north elevation.

Fig 13 Quadrangle: South-west range, north elevation.

Fig 14 Quadrangle: South-west range, east elevation.

Fig 15 Quadrangle: South-west range, south elevation.

Fig 16 Quadrangle: South-west range, west elevation.

Fig 17 Quadrangle: cast iron down pipe.

Fig 18 Quadrangle: example of classroom (room 58).

Fig 19 Quadrangle: example of office (room 12).

Fig 20 Quadrangle: example of bedroom (room 45)

Fig 21 Quadrangle: example of toilet (room 37).

Fig 22 Quadrangle: Boiler room (60) looking north.

Fig 23 Quadrangle: example of parquet floor.

Fig 24 Quadrangle: example of terrazzo floor in toilets and bathrooms.

Fig 25 Quadrangle: narrow board floor in first floor corridor (room 54).

Fig 26 Quadrangle: below floor drainage in science lab (room 51).

Fig 27 Quadrangle: stair detail.

Fig 28 Quadrangle: roof light in room 54.

Fig 29 Quadrangle: pendant globe light in room 54.

Fig 30 Quadrangle: brass light switch in room 40.

Fig 31 Quadrangle: example of wall panelling, dado and picture rails in room 18 looking east.

Fig 32 Quadrangle: detail of wall panelling and dado rail (room 9a).

Fig 33 Quadrangle: peg rail in room 34.

Fig 34 Quadrangle: built-in cupboard in room 17.

Fig 35 Quadrangle: example of tiling in bathrooms and toilets (room 39).

Fig 36 Quadrangle: example of tiling and sinks in toilets (room 5).

Fig 37 Quadrangle: example of shower (room 20).

- Fig 38 Quadrangle: example of tiles in science lab (room 51).
- Fig 39 Quadrangle: example of cast iron radiator (room 11).
- Fig 40 Quadrangle: example of cast iron radiator (room 28).
- Fig 41 Quadrangle: example of three panel door (room 43).
- Fig 42 Quadrangle: example of brass door handle (room 43).
- Fig 43 Quadrangle: example of door with margin lights (room 53).
- Fig 44 Quadrangle: example of cubicle doors (room 5).
- Fig 45 Quadrangle: example of cubicle door handle and lock (room 39).
- Fig 46 Quadrangle: internal porch doors (room 14).
- Fig 47 Quadrangle: example of moulded window sill (room 2).
- Fig 48 Quadrangle: example steel frame borrowed light to stairs (room 19).
- Fig 49 Quadrangle: example steel frame borrowed light (room 43).
- Fig 50 Quadrangle: electricity service head at top of room 60.
- Fig 51 Quadrangle: examples of water faucet handles on pipes in boiler room (room 60).
- Fig 52 Link Building: North elevation main entrance.
- Fig 53 Link Building: North elevation.
- Fig 54 Link Building: North elevation roof.
- Fig 55 Link Building: East elevation.
- Fig 56 Link Building: South elevation.
- Fig 57 Link Building: West elevation.
- Fig 58 Link Building: Reception (room 61) looking north.
- Fig 59 Link Building: Reception (room 61) looking south-east.
- Fig 60 Link Building: Reception (room 61) looking west.
- Fig 61 Link Building: Reception (room 61) looking up to link corridor.
- Fig 62 Link Building: Office (room 68) looking south-west.
- Fig 63 Link Building: Corridor (room 70) looking north.
- Fig 64 Link Building: Office (room 71) looking west.
- Fig 65 Link Building: Link passage (room 72) looking east.
- Fig 66 Link Building: Link passage (room 72) looking south.
- Fig 67 Ground floor plan showing room numbers.
- Fig 68 First floor plan showing room numbers.
- Fig 69 North and north-west elevations of Quadrangle and Link Building.
- Fig 70 East, south-east and south elevations of Quadrangle and Link Building.
- Fig 71 West and north-west elevations of Quadrangle and Link Building.

Abbreviations

CAU	Cornwall Archaeological Unit
CIfA	Chartered Institute for Archaeologists
CRO	Cornwall Record Office
HE	Historic England
HER	Cornwall and the Isles of Scilly Historic Environment Record
NGR	National Grid Reference
OD	Ordnance Datum – height above mean sea level at Newlyn
OS	Ordnance Survey

1 Summary

This Historic building record was commissioned by Bilfinger GVA in advance of the development of a new health centre at St Clare, Penzance. Conditional planning permission for the demolition of an existing non-listed swimming pool building and the Grade II listed Quadrangle building in order to erect a new healthcare building (application number PA16/08512) has now been granted. Condition 4 of the planning permission required a programme of archaeological work to be undertaken which included a historic building record to be made of the Quadrangle and Link building. The historic building record (equivalent to a Historic England level 3 building survey) has been undertaken as a mitigation measure for the impacts of the demolition on a major part of the listed building.

The Quadrangle and Link building at St Clare are later extensions of York House, an early 19th century Grade II listed building, located on the north-west side of Penzance at NGR SW 46688 30760 (Figs 1 and 2). As adjoining buildings the later extensions form part of the Grade II house. The Quadrangle was built in 1938 as new classrooms and an assembly hall when the site was occupied by West Cornwall College for Girls, and is significant as an early example of a Modernist school building. The Link building is likely to have been constructed in the 1980s by Penwith District Council who acquired the site in 1974.

The recording work of the Quadrangle has revealed that the majority of the school building retains its original features and fittings internally, with some alteration made during the course of Council ownership.



Fig 1 Location map.

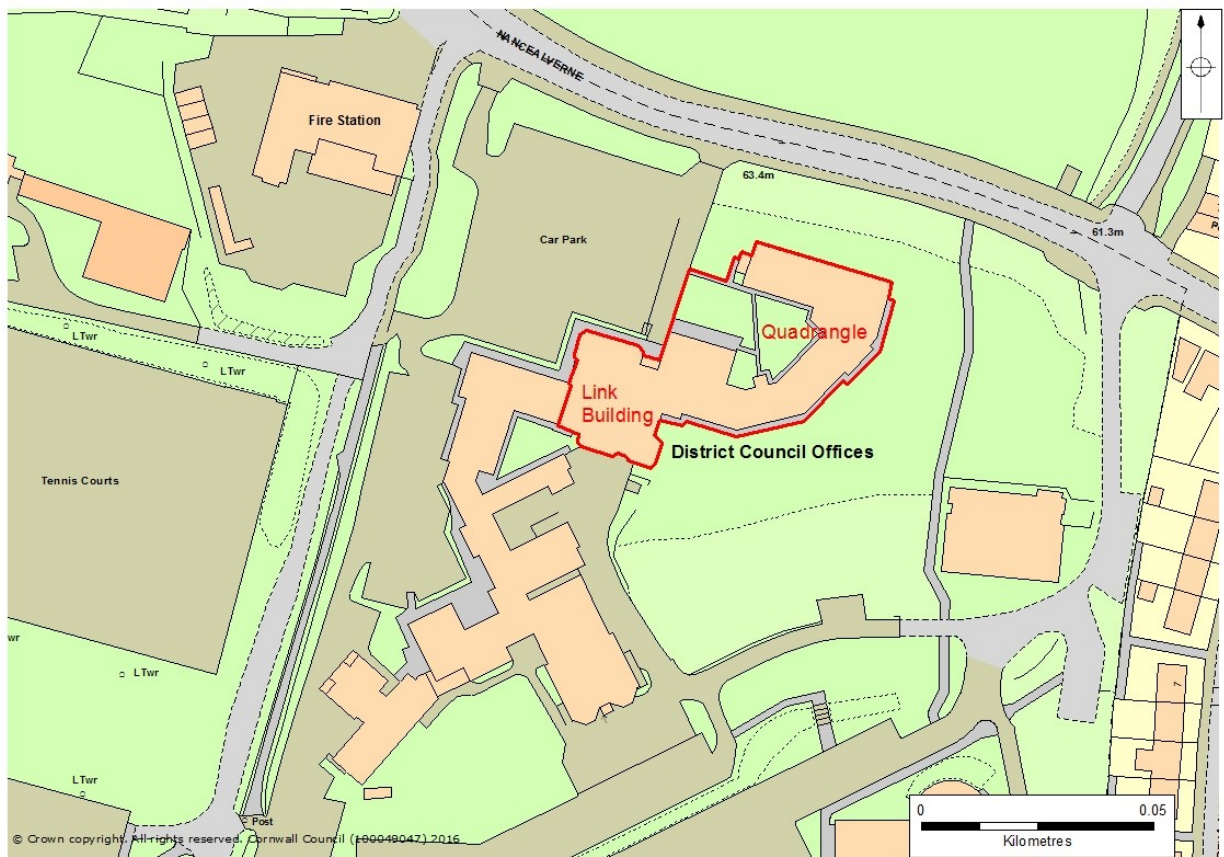


Fig 2 Site extent.

2 Introduction

2.1 Project background

This Historic building record was commissioned by Bilfinger GVA in advance of the development of a new health centre at St Clare, Penzance. Conditional planning permission for the demolition of an existing non-listed swimming pool building and the Grade II listed Quadrangle building in order to erect a new healthcare building (application number PA16/08512) has now been granted. Condition 4 of the planning permission required a programme of archaeological work to be undertaken which included a historic building record to be made of the Quadrangle and Link building. The historic building record (equivalent to a Historic England level 3 building survey) has been undertaken as a mitigation measure for the impacts of the demolition on a major part of the listed building.

The requirements for building recording were determined by Sean Taylor, Senior Development Officer (Historic Environment, Cornwall Council) and are outlined in the Written Scheme of Investigation (WSI) prepared by CAU.

2.2 Aims

The principal aim was to produce the equivalent of a Level 3 historic building survey, as defined by Historic England.

2.3 Methods

2.3.1 Desk-based assessment

During the desk-based assessment historical archives were consulted in order to obtain further information about the history of the site and build upon the existing work undertaken on the site's historical development (Dudley 2016; Sturgess 2015). This stage involved a site visit to the Cornwall Record Office to search the archives for any details about the use of the Quadrangle Building.

2.3.2 Fieldwork

The equivalent of a Level 3 Building Survey (as defined by Historic England 2016) was produced.

Recording included a room by room description with external and internal architectural features and detail annotated to copies of existing measured external elevations and floor plans supplied by the client.

Analysis of the fabric was undertaken on site (recorded as notes) to allow a description to be written up at the archive report stage.

Photographic recording included colour photography using a digital SLR camera (with a resolution of 10 million pixels or higher). Supporting black and white photographs were also taken (the negatives to form a stable archive).

CAU follows Historic England guidance on digital image capture and file storage (Historic England 2015).

The photo record comprised:

- General views.
- All external elevations.
- All internal room spaces.
- Examples of structural and architectural detail.

A metric scale was included in all views, except where health and safety considerations make this impractical.

2.3.3 Post-fieldwork

All site materials were prepared for long term storage. This included:

- Finalisation of measured drawings.
- Archiving of drawings, photographs, paperwork and digital files.
- Filing of digital colour photographs and limited image editing (eg, composition, lighting) where appropriate.
- Creation of an archive report.
- Completion of the Historic England OASIS record (online access to archaeological investigations).
- Preparation of CAU archive.

3 Location and setting

The site of the former Council Offices lies on the north-west side of Penzance (centred at NGR SW 4663 3068) with its entrances on the southern side of Nancealverne and with Penzance Leisure Centre bordering it immediately to the south (Figs 1 and 2). The Quadrangle and Link Building are attached to the north end of York house and as a whole form a Grade II Listed Building. The site occupies a south facing slope which gently slopes from 64m OD in the north, where the Quadrangle and Link Building are located, down to 56m OD in the south.

The site lies within an area of known prehistoric activity with an important Iron Age/Romano British settlement lying immediately to the north. It also lies within and is part of the medieval settlement of St Clare.

York House is one of several large 19th century villas to have been built on the outskirts of Penzance. These villas, arranged in an arc around the western side of the town, form an important part of the historic development of Penzance and are significant both in their own right and as part of a group representing a particular period major expansion around Penzance.

Geologically, the underlying bedrock of the site is Devonian unnamed extrusive rocks-Mafic lava.

4 Designations

York House along with its adjoining buildings which includes the Quadrangle and Link Building is a Grade II listed building. The listed building description is as follows:

It should be noted that all buildings adjoining the original structure are deemed part of the Listed Building.

The grounds surrounding York House and the Quadrangle are part of the curtilage of the Listed Building.

5 Site history

In summary, the construction of York House was begun in 1825 for Henry Pope, a local business man. Unfortunately Henry died in 1828 before completion, leaving it to his nephew, John Pope Vibert, who was responsible for finishing the building work. During the late 19th century the house changed hands several times and various extensions were added and alterations made.

In 1929 York House (and the neighbouring St Clare Cottage) was purchased by West Cornwall College. This later became known as West Cornwall School for Girls which had moved here from earlier premises on Chapel Street. The site was owned by the school until 1969 but the school itself closed in 1967.

During this time many of the present buildings on the site were added including the Quadrangle Building (built as new classrooms and an assembly hall in 1938 and opened in 1939) and the swimming pool built in the 1950s or 60s. The pool was initially built as an open air pool but later roofed over.

The Quadrangle building is described by Dudley (2016, site 20) as follows: *'This Modernist building, built around a quadrangle, was constructed in 1938 and opened in 1939 as part of West Cornwall School. The architect was Mr G E Withers. The building remains in situ with many of its original fixtures and fittings intact, however, alterations have been made including modern fenestration (uPVC double glazing) and the knocking through to join a later block.'*

In 1970 Penzance Borough Council acquired the property and in 1974 it became the offices of Penwith District Council. At some point after 1974, most probably in the 1980s, the Link Building was built. This structure is first shown on the 1988 OS map, but is not illustrated on the 1968 OS map. In 2009 the District Council was subsumed as part of Cornwall Council under the new unitary authority.

6 The Quadrangle (1938)

(Figs 3-51 and 67-71).

6.1 General description and external elevations

The Quadrangle was designed and built in 1938 to provide new classrooms, accommodation and a new assembly hall/gymnasium for West Cornwall School for girls. Its modernist, Art Deco design was the creation of a London architect, George Edward Withers.

In plan the building appears as an angular, backward C-shape, open-sided to the west and arranged around an open, grassed, quadrangle. It is a two-storey building of steel frame construction with concrete blockwork walls and a flat, reinforced shuttered concrete roof covered with natural rock asphalt or sheet asphalt and containing original roof lights made from prismatic glass blocks. Both the ground and first floor structures are also made from reinforced, shuttered concrete.

The external wall surfaces are rendered with the original roughcast cement (now painted cream but originally probably white). As part of the original design there were three decorative bands around the external elevations; one at ground level (surviving as a black painted band 0.25m wide), one just above ground floor window level (removed or painted over, but scarring visible) and the other just above first floor window level (removed or painted over but scarring visible). There are low parapet walls around the top of the building at roof level. These have square openings in them set above cast iron downpipes which allow rainwater to drain from channels around the edges of the flat roof. A section of the parapet over the main entrance in the quadrangle has been designed as an Art Deco pointed pediment and there is another opposite it on the rear (south-east) elevation. The vast majority of window and door openings are original although none of the original external steel framed windows survive. All of these have been replaced with modern UPVC windows. Externally the window openings have original concrete sills. Around the base of the entire building there are moulded concrete drainage channels and the original footpaths through the central quadrangle area are constructed from poured concrete with some areas replaced with concrete paving slabs.

The layout of the original school building was designed with a full height assembly hall/gymnasium with tall double height windows occupying the north range. At the eastern end of this at the north-east corner of the building, changing rooms, toilets and showers and bathrooms were located on the ground and first floor. The south-east range was occupied by classrooms at ground floor level and private single bedrooms at

first floor level, whilst the south-west range contained classrooms on both floors with a large, tiled science laboratory occupying the first floor at the west end. There were also toilets at this end of the building at ground floor level, and below them an original basement containing a boiler room to provide heating and hot water throughout the building. On the roof above the area of the boiler room there is a large water tank.

Many original internal features and fittings survive including:

- Characteristically 1930s yellow and black tiled bathrooms and toilets with terrazzo (decorative polished concrete) floors.
- Three panelled doors (some with margin lights), brass handles and simple plain chamfered door frames.
- Tongue and groove panelling to dado height in many classrooms, with ogee moulded dado.
- Ogee moulded picture rails in bedrooms, offices and some classrooms.
- Ogee moulded sills to windows.
- Plain chamfered skirting boards.
- Parquet floor throughout ground floor except in the assembly hall/gymnasium where there is a suspended floor covered with narrow boards and in toilets and shower rooms which have terrazzo floors.
- Parquet floor in corridors of the first floor as well as the classrooms in the north part of the south-west range and very narrow boards in bedrooms and the remaining classrooms at first floor level.
- Below-floor ceramic drainage for raised, first floor science rooms.
- Cast iron radiators.
- Glass globe light fittings.
- Brass light switches.
- Timber staircases with moulded timber handrails.
- Boiler room pipes and electricity service head.

6.2 Interior ground floor

(See Fig 67 for room locations).

6.2.1 Room 1

Original function: Corridor in south-west range.

Floor: Original Parquet flooring.

Ceiling: Modern fibreboard with modern strip lighting.

Walls: Original walls with original plain chamfered skirting and plain chamfered door frames.

Doors: All the door openings are original except for the double fire doors at the east end of the corridor which have been inserted. Doors to rooms 6 and 9b are original three-panel doors. At the west end of the corridor there is a lobby with original double door opening to the east side.

Windows: The borrowed light opening to room 9b is probably original but has a later two-light window inserted in it.

6.2.2 Room 2

Original function: Classroom, originally part of room 3.

Floor: Original Parquet flooring now covered by modern carpet.

Ceiling: Original plastered ceiling with modern strip lighting.

Walls: The east wall is a modern, plasterboard insertion. All the other walls are original with original plain chamfered skirting.

Doors: The door opening is original with plain chamfered door frame. The door itself is a modern fire door.

Windows: All the window openings are original and have original ogee moulded sills. The windows themselves are all modern UPVC replacements. There is a blocked window opening at the south end of the west wall.

Radiators: There is a c1960-70s radiator on the north wall.

6.2.3 Room 3

Original function: Classroom, originally part of room 2.

Floor: Original Parquet flooring now covered by modern carpet.

Ceiling: Original plastered ceiling with modern strip lighting.

Walls: The west wall is a modern, plasterboard insertion. All the other walls are original with original plain chamfered skirting.

Doors: The door opening from the corridor is original with plain chamfered door frame. The door itself is a modern fire door. The door opening in the north wall, leading outside, is modern and has been inserted in an original window opening.

Windows: The narrow window opening in the north wall is original and has an original ogee moulded sill. The window itself is a modern UPVC replacement. There is a blocked window to the west of it where the modern door has been inserted.

Radiators: There is a modern radiator on the west wall.

6.2.4 Room 4

Original function: Stairs to first floor in south-west range. These are dog-leg stairs with landing at the turning point and landing at the top.

Floor: Original timber board stairs now covered with vinyl flooring.

Ceiling: Original plastered ceiling with modern strip lighting.

Walls: Original walls with original skirting. There is an original moulded timber handrail with iron fixings.

Doors: The door opening at the top of the stairs is original and has a plain chamfered door frame. The door itself is also an original three-panel door.

Windows: The window opening in the north wall at mid-landing level is original but has a modern UPVC window inserted in it.

6.2.5 Room 5

Original function: Toilets, originally part of room 6 and only for girls. This is now the men's toilets.

Floor: Original Terrazzo (decorative polished concrete) floor.

Ceiling: Original plastered ceiling with modern strip lighting.

Walls: The walling dividing off room 6 (to the south-east) is inserted (probably when the Council first acquired the building). All the other walls are faced with original yellow and black tiling. Two tiled, walled cubicles remain *in situ*, but the one to the north has been removed to add urinals.

Doors: The door opening from the corridor is original with plain chamfered door frame. The door itself is a modern door. The doors to the remaining two cubicles are original three-panel doors with original, brass vacant/engaged locks.

Windows: All the window openings are original. The windows themselves are all modern UPVC replacements.

Fittings: There are two original sinks with their original taps at the north end of the west wall.

6.2.6 Room 6

Original function: Toilets, originally part of room 5 and only for girls. This is now the ladies toilets.

Floor: Original Terrazzo (decorative polished concrete) floor, now overlain with a vinyl floor covering.

Ceiling: Original plastered ceiling with modern strip lighting.

Walls: The walling dividing off room 5 (to the south-west) is inserted (probably when the Council first acquired the building). All the other walls are faced with original yellow and black tiling except at the south end where they have been overlain with modern tiles. Two tiled, walled cubicles remain *in situ*.

Doors: The door opening from the corridor is original with plain chamfered door frame. It has an original three-panel door. The doors to the two cubicles are original three-panel doors with original, brass vacant/engaged locks.

Windows: All the window openings are original. The windows themselves are all modern UPVC replacements.

Fittings: There are two original sinks with their original taps at the south end of the room. The original wire and brass toilet roll holders remain *in situ*.

6.2.7 Rooms 7 and 8

Original function: Classroom, originally part of room 9a. These small interview rooms were created by the Council when the Link Building was built.

Floor: Original Parquet flooring now covered by modern carpet.

Ceiling: Original plastered ceiling modern lighting.

Walls: The internal walls are modern and have strengthened glass interview windows. The west wall and south wall are the original external walls of the Quadrangle and there is a blocked original window opening at the north end of the west wall.

Doors: The doors are all modern insertions which have probably been inserted in original window openings in the west wall.

6.2.8 Room 9a

Original function: Classroom. This room has now been opened up into rooms 9b and 9c, but originally it was a single classroom along with the now partitioned off rooms 7 and 8.

Floor: Original Parquet flooring now covered by modern carpet.

Ceiling: Original plastered ceiling with modern strip lighting

Walls: The west wall dividing off rooms 7 and 8 is a modern, plasterboard insertion. All the other walls are original, but the east wall has been partially removed. There is

evidence that originally there was a door opening north end of the east wall giving access to room 9b. On the north and south walls there is original tongue and groove panelling with plain chamfered edges up to dado level topped with an ogee moulded dado rail.

Doors: The door opening to the corridor is original with plain chamfered door frame. The door itself is a modern fire door. Doors to rooms 7 and 8 are modern.

Windows: The window opening in the south wall is original but has been narrowed to the west where a door has been inserted when the Link Building was added. The window itself is a modern UPVC replacement but the original ogee moulded sill remains *in situ*.

Radiators: There is a c1960-70s radiator on the south wall.

6.2.9 Room 9b

Original function: Classroom. This room has now been opened up into rooms 9a and 9c, but originally it was a single classroom.

Floor: Original Parquet flooring now covered by modern carpet.

Ceiling: Original plastered ceiling with modern strip lighting

Walls: Only the central section of the west wall survives *in situ*, the rest of the wall has been removed. There is evidence that originally there was a door opening at the north end of this wall giving access to room 9a. A small central pillar is all that is left of the east wall but there is evidence that originally there was a door opening at the south end of it giving access to room 9c. Both the north and south walls are original and have original tongue and groove panelling with plain chamfered edges up to dado level topped with an ogee moulded dado rail.

Doors: The door opening to the corridor is original with plain chamfered door frame. The door itself is an original three-panelled door.

Windows: The wide window opening in the south wall is original. The window itself is a modern UPVC replacement but the original ogee moulded sill remains *in situ*. The borrowed light in the north wall is possibly an original opening, but now contains an inserted two-pane window.

Radiators: There is a c1960-70s radiator on the south wall.

6.2.10 Room 9c

Original function: Classroom. This room has now been opened up into rooms 9c, but originally it was a single classroom along with room 10.

Floor: Original Parquet flooring now covered by modern carpet.

Ceiling: Original plastered ceiling with modern strip lighting

Walls: A small central pillar is all that is left of the west wall but there is evidence that originally there was a door opening at the south end of it giving access to room 9b. Both the north and south walls are original and have original tongue and groove panelling with plain chamfered edges up to dado level topped with an ogee moulded dado rail. The east wall is an inserted modern plasterboard partition.

Doors: The door opening to the corridor is original with plain chamfered door frame. The door itself is a modern fire door.

Windows: The wide window opening in the south wall is original, although it is now split between rooms 9c and 10. The window itself is a modern UPVC replacement but the original ogee moulded sill remains *in situ*.

Radiators: There is a c1960-70s radiator on the south wall.

6.2.11 Room 10

Original function: Classroom. This room has been created more recently. Originally it was part of room 9c forming a single classroom.

Floor: Original Parquet flooring now covered by modern carpet.

Ceiling: Original plastered ceiling with modern strip lighting

Walls: The west wall is an inserted modern plasterboard partition. All the other walls are original and have original tongue and groove panelling with plain chamfered edges up to dado level topped with an ogee moulded dado rail.

Doors: The door opening to the corridor is original with plain chamfered door frame. The door itself is a modern fire door.

Windows: The wide window opening in the south wall is original, although it is now split between rooms 9c and 10. The window itself is a modern UPVC replacement but the original ogee moulded sill remains *in situ*.

Radiators: There is a c1960-70s radiator on the south wall.

6.2.12 Room 11

Original function: Probable office.

Floor: Original Parquet flooring now covered by modern carpet.

Ceiling: Original plastered ceiling with modern strip lighting.

Walls: All the walls are original and form a corner room which is a trapezium in plan. They have an original ogee moulded picture rail and plain chamfered skirting.

Doors: The door opening to the corridor is original with plain chamfered door frame. The door itself is an original three-panelled door.

Windows: The two narrow window openings in the south wall are original. The windows are modern UPVC replacements but the original ogee moulded sills remain *in situ*.

Radiators: There are two original cast iron radiators on the south wall.

6.2.13 Room 12

Original function: Probable main office/reception.

Floor: Original Parquet flooring now covered by modern carpet.

Ceiling: Original plastered ceiling with modern strip lighting.

Walls: All the walls are original. They have an original ogee moulded picture rail and plain chamfered skirting.

Doors: The door opening to the corridor is original with plain chamfered door frame. The door itself is an original three-panelled door. There is another original door opening through to room 13 in the east wall with plain chamfered door frame and a modern, replacement fire door.

Windows: The three window openings in the south wall are original. The windows are modern UPVC replacements but the original ogee moulded sills remain *in situ*.

Radiators: There are two c1960-70s radiators on the south wall.

6.2.14 Room 13

Original function: Probable office.

Floor: Original Parquet flooring now covered by modern carpet.

Ceiling: Original plastered ceiling with modern strip lighting.

Walls: All the walls are original and form a corner room which is a trapezium in plan. They have an original ogee moulded picture rail and plain chamfered skirting.

Doors: The door opening to the corridor is original with plain chamfered door frame. The door itself is an original three-panelled door. There is another original door opening through to room 12 in the west wall with plain chamfered door frame and a modern, replacement fire door.

Windows: The two narrow window openings in the south wall are original. The windows are modern UPVC replacements but the original ogee moulded sills remain *in situ*.

Radiators: There are two original cast iron radiators on the south wall.

6.2.15 Room 14

Original function: Corridor in south-west and south-east ranges.

Floor: Original Parquet flooring.

Ceiling: Original plastered ceiling with modern strip lighting.

Walls: Original walls with original plain chamfered skirting and plain chamfered door frames.

Doors: All the door openings are original except for the double fire doors at the west end and north-east end of the corridor which have been inserted. Doors to rooms 11, 12, 13, 15 and 16a are original three-panel doors. On the north-west side of the corridor, opposite room 12 there are original glazed double doors with margin lights together with a margin light above. These double doors lead to the main entrance porch. The external porch door is a modern replacement. Towards the north-east end of the corridor a door opening has been inserted in a former window opening in the north-west wall.

Windows: All the window openings along the north and north-west side of the corridor are original. The windows are modern UPVC replacements but the original ogee moulded sills remain *in situ*. The borrowed light openings to room 15 and 16a are probably original but have later two-light windows inserted in them.

Radiators: There are four original, cast iron radiators on the north and north-west walls.

6.2.16 Room 15

Original function: Classroom.

Floor: Original Parquet flooring now covered by modern carpet.

Ceiling: Original plastered ceiling with modern strip lighting.

Walls: All the walls are original and have original tongue and groove panelling with plain chamfered edges up to dado level topped with an ogee moulded dado rail. On the east wall there is an original picture rail.

Doors: The door opening to the corridor is original with plain chamfered door frame. The door itself is an original three-panelled door with the upper panel glazed, with margin lights.

Windows: The wide window opening in the south-east wall is original. The window itself is a modern UPVC replacement but the original ogee moulded sill remains *in situ*. The borrowed light in the north wall is possibly an original opening, but now contains an inserted two-pane window.

Radiators: There are two c1960-70s radiators on the south wall.

6.2.17 Room 16a

Original function: Classroom. This room has now been opened up into room 16b, but originally it was a single classroom.

Floor: Original Parquet flooring now covered by modern carpet.

Ceiling: Original plastered ceiling with modern strip lighting.

Walls: Only the central section of the north-east wall survives and the room is now open to room 16b. All the other walls are original and have original tongue and groove panelling with plain chamfered edges up to dado level topped with an ogee moulded dado rail.

Doors: The door opening to the corridor is original with plain chamfered door frame. The door itself is an original three-panelled door with the upper panel containing replacement glazing.

Windows: The wide window opening in the south-east wall is original. The window itself is a modern UPVC replacement but the original ogee moulded sill remains *in situ*. The borrowed light in the north wall is possibly an original opening, but now contains an inserted two-pane window.

Radiators: There are two c1960-70s radiators on the south wall.

6.2.18 Room 16b

Original function: Classroom. This room has now been opened up into room 16a, but originally it was a single classroom.

Floor: Original Parquet flooring now covered by modern carpet.

Ceiling: Original plastered ceiling with modern strip lighting.

Walls: Only the central section of the south-west wall survives and the room is now open to room 16a. All the other walls are original and have original tongue and groove panelling with plain chamfered edges up to dado level topped with an ogee moulded dado rail.

Doors: The door opening to the corridor is original with plain chamfered door frame. The door itself is a modern replacement.

Windows: The wide window opening in the south-east wall is original. The window itself is a modern UPVC replacement but the original ogee moulded sill remains *in situ*. The borrowed light in the north wall is possibly an original opening, but now contains an inserted two-pane window.

Radiators: There are two c1960-70s radiators on the south wall.

6.2.19 Room 17

Original function: Storage room.

Floor: Original Parquet flooring.

Ceiling: Original plastered ceiling with modern strip lighting.

Walls: All the walls are original and form a corner room which is a trapezium in plan and incorporates a below-stairs cupboard. All walls have plain chamfered skirting boards.

Doors: The door opening to the corridor is original with plain chamfered door frame. The door itself is a modern fire door. There is another original door opening to the under stairs cupboard with plain chamfered door frame and a modern, replacement door.

Windows: The two window openings in the south-east wall are original. The windows are modern UPVC replacements but the original ogee moulded sills remain *in situ*.

Fittings: On the north-east wall there is an original built-in cupboard made with plain chamfered tongue and groove panelling. In the under stairs cupboard the original plain chamfered shelving survives *in situ*.

6.2.20 Room 18

Original function: Office.

Floor: Original Parquet flooring.

Ceiling: Original plastered ceiling with modern strip lighting.

Walls: All the walls are original and form a corner room which is kite-shaped in plan. All the walls are original and have original tongue and groove panelling with plain chamfered edges up to dado level topped with an ogee moulded dado rail. On the north and south-east walls picture rails remain *in situ*.

Doors: The door opening to the corridor is original with plain chamfered door frame. The door itself is an original three-panel door.

Windows: The three window openings in the north-west and south-west walls are original. The windows are modern UPVC replacements but the original ogee moulded sills remain *in situ*.

Radiators: There are four c1960-70s radiators on the north-west and south-west walls under the windows.

6.2.21 Room 19

Original function: Corridor and stairs in south-east and north ranges.

Floor: Original Parquet flooring.

Ceiling: Original plastered ceiling with modern strip lighting.

Walls: Original walls with original plain chamfered skirting and plain chamfered door frames.

Stairs: These are dog-leg stairs with landing at the turning point and landing at the top. They have original timber board stairs with original moulded timber handrail and iron fixings.

Doors: All the door openings are original except for the double fire doors at the south-west end which have been inserted. Doors to rooms 18, 20, 21, 25 and 26 are original three-panel doors. At the west end of the corridor in the north range the double doors to room 28 are original. These doors once gave access to the assembly hall/gym.

6.2.22 Room 20

Original function: Shower room.

Floor: Original Terrazzo (decorative polished concrete) floor.

Ceiling: Original plastered ceiling with modern strip lighting.

Walls: All the walls are faced with original yellow and black tiling. The shower cubicle remains untouched with terracotta tiles in the base and yellow and black tiling on the walls.

Doors: The door opening from the corridor is original with plain chamfered door frame. It has an original three-panel door with original brass handle.

Windows: The window opening in the east wall is original. The window itself is a modern UPVC replacement.

Fittings: There is an original sink with its original taps on the south wall.

6.2.23 Room 21

Original function: Cloakroom or staff changing room, now converted as toilets.

Floor: Original Parquet flooring, now overlain with a vinyl floor covering.

Ceiling: Original plastered ceiling with modern strip lighting.

Walls: All the walls are original and have plain chamfered skirting boards.

Doors: The door opening from the corridor is original with plain chamfered door frame. It has an original three-panel door.

Windows: The window opening in the east wall is original. The window itself is a modern UPVC replacement.

Fittings: Two modern toilet cubicles have been inserted to the north along with a modern sink to the east.

6.2.24 Room 22

Original function: Girls changing room, originally part of room 24. This has now been converted to accommodate computer servers.

Floor: The original Parquet flooring has been replaced with a concrete floor which is overlain with a vinyl floor covering.

Ceiling: Original plastered ceiling with modern strip lighting.

Walls: The north wall dividing the room from room 24 is a modern insertion. All the other walls are original and have plain chamfered skirting boards on the south and west walls. On the east and west walls there is a lip a scaring running horizontally along the walls at the level where a clothes peg rail would have hung.

Doors: The door opening from room 25 is original with plain chamfered door frame. The door itself is a modern replacement.

6.2.25 Room 23

Original function: Toilet. This has now been converted as a kitchen.

Floor: Original Terrazzo (decorative polished concrete) floor. There is scaring where the toilet has been removed to the east.

Ceiling: Original plastered ceiling with modern strip lighting.

Walls: All the walls are faced with original yellow and black tiling up to a height of approximately 2m.

Doors: The door opening from room 24 is original with plain chamfered door frame. It has an original three-panel door with original brass handles.

Windows: The window openings in the north and east walls are original. The windows themselves are modern UPVC replacements.

Fittings: There is an original sink with its original taps to the west.

6.2.26 Room 24

Original function: Girls changing room, originally part of room 22. This has now been converted as a passage to the kitchen (former toilet) room 23.

Floor: Original Parquet flooring now covered by modern carpet.

Ceiling: Original plastered ceiling with modern strip lighting.

Walls: The south wall dividing the room from room 22 is a modern insertion. All the other walls are original and have plain chamfered skirting boards.

Doors: The door openings to the east and west are original with plain chamfered door frames. They both have original three-panel doors.

Windows: The window openings in the north wall are original. The windows themselves are modern UPVC replacements.

6.2.27 Room 25

Original function: Lobby to girls changing room.

Floor: Original Parquet flooring now covered by modern carpet.

Ceiling: Original plastered ceiling with modern strip lighting.

Walls: All the walls are original and have plain chamfered skirting boards.

Doors: The door opening in the west wall to room 26 is a modern insertion. The door opening from the corridor in the south wall is original and has an original three-panel door. The two door openings to the changing rooms (22 and 24) are also original with plain chamfered door frames. That to room 24 has an original three-panel door and that to room 22 has a modern replacement door.

Windows: The window openings in the north wall are original. The windows are modern UPVC replacements but the original ogee moulded sills remain *in situ*.

Radiators: There are two c1960-70s radiators on the north wall under the windows.

6.2.28 Room 26

Original function: Probable store room for sports equipment.

Floor: The floor level in this room, and those rooms now occupying the original gymnasium/assembly hall, steps up from the rest of the building by approximately 0.35m. It has original narrow board flooring (10cm wide boards) now covered by modern carpet.

Ceiling: Original plastered ceiling with modern strip lighting.

Walls: All the walls are original and have plain chamfered skirting boards.

Doors: The door opening to the corridor is original with a plain chamfered frame and has an original three-panel door. The door openings in both the east and west walls are modern insertions.

Windows: The window opening in the north wall is original. The window is a modern UPVC replacement but the original ogee moulded sill remains *in situ*.

Radiators: There is a c1960-70s radiator on the north wall under the window. Raised above door level on the south wall, there is a c1970s air conditioner.

6.2.29 Room 27

Original function: Rooms 27, 28, 29, 30, 31, 32 and 33 were all originally part of a single assembly hall/ gymnasium. This assembly hall/ gymnasium is single storey and double height reaching 4.9m high.

Floor: The floor level in this room, and those rooms now occupying the original gymnasium/assembly hall, steps up from the rest of the building by approximately 0.35m. It has original narrow board flooring (10cm wide boards) now covered by modern carpet. The boards are suspended on timber joist set on a concrete raft.

Ceiling: The original plastered ceiling is 4.9m from floor level. This is now concealed by an inserted, modern suspended ceiling made from fibreboard tiles with modern strip lighting at a height of 2.95m from floor level.

Walls: The north and east walls of room 27 are original and have plain chamfered skirting boards. The south and west walls are modern fibreboard insertions.

Doors: The door opening in the south wall is modern.

Windows: The window openings in the north wall are original and measure 3.73m high. The windows are modern UPVC replacement but the original ogee moulded sills remain *in situ*.

Radiators: There are two c1960-70s radiators on the north wall under the windows.

6.2.30 Room 28

Original function: Rooms 27, 28, 29, 30, 31, 32 and 33 were all originally part of a single assembly hall/ gymnasium. This assembly hall/ gymnasium is single storey and double height reaching 4.9m high. Room 28 was partitioned off by the Council to form a corridor.

Floor: The floor level in this room, and those rooms now occupying the original gymnasium/assembly hall, steps up from the rest of the building by approximately 0.35m. It has original narrow board flooring (10cm wide boards) now covered by modern carpet. The boards are suspended on timber joist set on a concrete raft.

Ceiling: The original plastered ceiling is 4.9m from floor level. This is now concealed by an inserted, modern suspended ceiling made from fibreboard tiles with modern strip lighting at a height of 2.95m from floor level.

Walls: The south and east walls of room 28 are original and have plain chamfered skirting boards. All the other walls are modern fibreboard insertions.

Doors: The double door opening in the east wall is the original entrance to the hall/gymnasium from corridor 19. Both doors are original three-panel doors with reinforced lights inserted in the top panels. All the other doors in this room are associated with the modern, fibreboard partitions.

Windows: The window opening in the south wall is original and measure 3.73m high. The window itself is a modern UPVC replacement but the original ogee moulded sill remains *in situ*.

Radiators: There is an original cast iron radiator (painted dark green) on the south wall under the window.

6.2.31 Room 29

Original function: Rooms 27, 28, 29, 30, 31, 32 and 33 were all originally part of a single assembly hall/ gymnasium. This assembly hall/ gymnasium is single storey and double height reaching 4.9m high. Room 29 was partitioned off by the Council for use as part of their print rooms.

Floor: The floor level in this room, and those rooms now occupying the original gymnasium/assembly hall, steps up from the rest of the building by approximately 0.35m. It has original narrow board flooring (10cm wide boards) now covered by modern carpet. The boards are suspended on timber joist set on a concrete raft.

Ceiling: The original plastered ceiling is 4.9m from floor level. This is now concealed by an inserted, modern suspended ceiling made from fibreboard tiles with modern strip lighting at a height of 2.95m from floor level.

Walls: All the walls are modern fibreboard insertions.

Doors: The door to this room in the south wall is associated with the modern, fibreboard partition.

6.2.32 Room 30

Original function: Rooms 27, 28, 29, 30, 31, 32 and 33 were all originally part of a single assembly hall/ gymnasium. This assembly hall/ gymnasium is single storey and double height reaching 4.9m high. Room 30 was partitioned off by the Council for use as part of their print rooms.

Floor: The floor level in this room, and those rooms now occupying the original gymnasium/assembly hall, steps up from the rest of the building by approximately 0.35m. It has original narrow board flooring (10cm wide boards) now covered by modern carpet. The boards are suspended on timber joist set on a concrete raft.

Ceiling: The original plastered ceiling is 4.9m from floor level. This is now concealed by an inserted, modern suspended ceiling made from fibreboard tiles with modern strip lighting at a height of 2.95m from floor level.

Walls: The north wall of room 30 is original and has plain chamfered skirting boards. All the other walls are modern fibreboard insertions.

Doors: The door to this room in the west wall is associated with the modern, fibreboard partition.

Windows: The window opening in the north wall is original and measures 3.73m high. The window itself is a modern UPVC replacement but the original ogee moulded sill remains *in situ*.

Radiators: There is an original cast iron radiator (painted dark green) on the north wall under the window.

6.2.33 Room 31

Original function: Rooms 27, 28, 29, 30, 31, 32 and 33 were all originally part of a single assembly hall/ gymnasium. This assembly hall/ gymnasium is single storey and double height reaching 4.9m high. Room 31 was partitioned off by the Council for use as part of their print rooms.

Floor: The floor level in this room, and those rooms now occupying the original gymnasium/assembly hall, steps up from the rest of the building by approximately 0.35m. It has original narrow board flooring (10cm wide boards) now covered by modern carpet. The boards are suspended on timber joist set on a concrete raft.

Ceiling: The original plastered ceiling is 4.9m from floor level. This is now concealed by an inserted, modern suspended ceiling made from fibreboard tiles with modern strip lighting at a height of 2.95m from floor level.

Walls: The south wall of room 31 is original and has replacement skirting boards. All the other walls are modern fibreboard insertions.

Doors: The modern door in the south wall has been inserted in an original window opening. The other doors to this room are associated with the modern, fibreboard partitions.

Windows: The window opening in the south wall is original and measures 3.73m high. The window itself is a modern UPVC replacement but the original ogee moulded sill remains *in situ*. The door opening to the west of this window was also originally a window opening of the same height.

Radiators: There is a modern radiator on the south wall between the window and the door.

6.2.34 Room 32

Original function: Rooms 27, 28, 29, 30, 31, 32 and 33 were all originally part of a single assembly hall/ gymnasium. This assembly hall/ gymnasium is single storey and double height reaching 4.9m high. Room 32 was partitioned off by the Council for use as part of their print rooms.

Floor: The floor level in this room, and those rooms now occupying the original gymnasium/assembly hall, steps up from the rest of the building by approximately 0.35m. It has original narrow board flooring (10cm wide boards). The boards are suspended on timber joist set on a concrete raft.

Ceiling: The original plastered ceiling is 4.9m from floor level. This is now concealed by an inserted, modern suspended ceiling made from fibreboard tiles with modern strip lighting at a height of 2.95m from floor level.

Walls: The north and west walls of room 32 are original and have plain chamfered skirting boards. The south and east walls are modern fibreboard insertions.

Doors: The doors to this room in the south and east walls are associated with the modern, fibreboard partitions.

Windows: The window openings in the north wall are original and measure 3.73m high. The windows themselves are modern UPVC replacements but the original ogee moulded sills remain *in situ*.

Radiators: There are two original cast iron radiators; one on the north wall under a window, the other on the west wall.

Fittings: A Belfast sink and another small sink have been inserted in the north-west corner of the room.

6.2.35 Room 33

Original function: Rooms 27, 28, 29, 30, 31, 32 and 33 were all originally part of a single assembly hall/ gymnasium. This assembly hall/ gymnasium is single storey and double height reaching 4.9m high. Room 33 was partitioned off by the Council for use as part of their print rooms.

Floor: The floor level in this room, and those rooms now occupying the original gymnasium/assembly hall, steps up from the rest of the building by approximately 0.35m. It has original narrow board flooring (10cm wide boards). The boards are suspended on timber joist set on a concrete raft.

Ceiling: The original plastered ceiling is 4.9m from floor level. This is now concealed by an inserted, modern suspended ceiling made from fibreboard tiles with modern strip lighting at a height of 2.95m from floor level.

Walls: The south and west walls of room 32 are original and have plain chamfered skirting boards. The north and east walls are modern fibreboard insertions.

Doors: At the west end of the south wall there is an original double door opening giving access to the hall/gymnasium from outside. This now has a modern UPVC door and window inserted in it. Outside the original, cast iron handrail and boot scraper remain *in situ*. The doors to this room in the north and east walls are associated with the modern, fibreboard partitions.

Windows: The window opening in the south wall is original and measure 3.73m high. The window itself is a modern UPVC replacement but the original ogee moulded sill remains *in situ*.

Radiators: There are two original cast iron radiators; one on the south wall under a window, the other on the west wall.

6.3 Interior first floor

(See Fig 68 for room locations).

6.3.1 Room 34

Original function: First floor corridor in south-east range.

Floor: Original Parquet flooring.

Ceiling: Original plastered ceiling with original roof lights made from prismatic glass tiles.

Walls: Original walls with original plain chamfered skirting and plain chamfered door frames. In the north section of the corridor on the south wall an original peg rail remains *in situ*.

Doors: All the door openings are original and have plain chamfered door frames. Doors to rooms 37, 38, 39 and 19 are original three-panel doors. The double fire doors to the south-west are modern replacements.

Windows: The window opening in the north-west wall is original. The window itself is a modern UPVC replacement but the original ogee moulded sill remains *in situ*. In the south-east wall dividing the corridor from the landing at the top of the stairs (room 19) there is an original borrowed light with steel frame and two pivoting casements.

Radiators: There is an original, cast iron radiator on the north-west wall below the window.

6.3.2 Room 35

Original function: Staff bedroom and staff corridor to the east (now removed).

Floor: Original Parquet flooring in the area of the removed corridor and floorboards, 0.15m wide in the area of the original bedroom.

Ceiling: Original plastered ceiling in the former bedroom area with original roof lights in the area of the removed corridor made from prismatic glass tiles.

Walls: Original walls with original plain chamfered skirting and plain chamfered door frames. The original wall dividing the bedroom from the staff corridor has been removed, but the scars from its removal are still visible in the north and south walls and running across the ceiling.

Doors: The door openings in the north and south wall are original openings with plain chamfered door frames giving access through the staff corridor. The door in the south wall is a modern replacement.

Windows: The window opening in the west wall is original but has been enlarged. The window itself is a modern UPVC replacement.

Radiators: There is a c1960-70s radiator on the west wall under the window.

6.3.3 Room 36

Original function: Two staff bedrooms and staff corridor to the east, now forming one large room.

Floor: Original Parquet flooring in the area of the removed corridor and floorboards, 0.15m wide in the area of the original bedroom.

Ceiling: Original plastered ceiling in the former bedroom areas with original roof lights in the area of the removed corridor made from prismatic glass tiles.

Walls: Original walls with original plain chamfered skirting and plain chamfered door frames. The original walls dividing the two bedrooms and the staff corridor have been removed, but the scars from their removal are still visible in the remaining walls and ceiling.

Doors: The door openings in the east and south walls are original openings with plain chamfered door frames giving access through the staff corridor. The door in the east wall is a modern replacement.

Windows: The window openings in the north and west walls are original but the one to the west has been enlarged. The windows themselves are modern UPVC replacements but the original ogee moulded sills survive in the two windows openings to the north.

Radiators: There are three c1960-70s radiators, one below each window.

6.3.4 Room 37

Original function: Staff toilet.

Floor: Original Terrazzo (decorative polished concrete) floor.

Ceiling: Original plastered ceiling with modern lighting.

Walls: All the walls are original and faced with original yellow and black tiling.

Doors: The door opening from the corridor is original with plain chamfered door frame. It has an original three-panel door with an original, brass vacant/engaged lock.

Windows: The window opening is original. The window itself is a modern UPVC replacement.

Fittings: There is a modern sink and toilet.

6.3.5 Room 38

Original function: Staff bathroom now converted into kitchen.

Floor: Original Terrazzo (decorative polished concrete) floor.

Ceiling: Original plastered ceiling with modern lighting.

Walls: All the walls are original and faced with original yellow and black tiling.

Doors: The door opening from the corridor is original with plain chamfered door frame. It has an original three-panel door with the upper two panels replaced with reinforced glass.

Windows: The window opening is original. The window itself is a modern UPVC replacement.

Fittings: The bath was originally located along the east wall where an original, built-in, tiled soap dish still survives in the wall.

6.3.6 Room 39

Original function: Girls toilets.

Floor: Original Terrazzo (decorative polished concrete) floor.

Ceiling: Original plastered ceiling with modern lighting.

Walls: All the walls are original and all except the south wall are faced with original yellow and black tiling. The south wall has been refaced with plasterboard.

Doors: The door opening from the corridor is original with plain chamfered door frame. It has an original three-panel door. The doors to the two cubicles to the north are also original three-panel doors with original brass handles and brass vacant/engaged locks. In the south wall there are two blocked door openings which once gave access to another toilet and separate bathroom in room 40.

Windows: The window openings in the east wall are original. The windows themselves are modern UPVC replacements.

Fittings: There is an original sink with original taps on the east wall. The urinal and toilet in the cubicles are both modern insertions.

6.3.7 Room 40

Original function: Girls toilets to the west and separate bathroom to the east, now converted as a single store room.

Floor: Original Terrazzo (decorative polished concrete) floor to the west defining the area of the former toilet. To the east the floor has been removed and replaced with modern concrete.

Ceiling: Original plastered ceiling with modern lighting.

Walls: The walls are all original. The east and west walls are faced with the original yellow and black tiling. The north and south walls have been refaced. There is an original air vent in the east wall.

Doors: The door opening into the present room is a modern insertion through the south wall. Originally the two separate rooms were accessed via two blocked door openings in the north wall from room 39.

Windows: The original window opening in the east wall has been blocked.

Fittings: The bath was originally located along the east wall where an original, built-in, tiled soap dish still survives in the wall. On the west wall within the original toilet there is an original, brass light switch.

6.3.8 Room 41

Original function: Possibly and original laundry, now converted as a safe room.

Floor: The floor has been removed and replaced with modern concrete.

Ceiling: Original plastered ceiling with modern lighting.

Walls: The walls are all original. There are two original air vents in the east wall.

Doors:

The door opening from the corridor is original but now has a large, inserted steel, safe door. The door opening into room 40 is a modern insertion through the north wall.

Windows: The two original window openings in the east wall have been blocked.

Radiators: There is a c1960-70s radiator on the east wall under the northern blocked window.

6.3.9 Room 42

Original function: Corridor in south-east range.

Floor: Original Parquet flooring.

Ceiling: Original plastered ceiling with modern lighting.

Walls: Original walls with original plain chamfered skirting and plain chamfered door frames.

Doors: All the door openings are original except for the double fire doors at the west end of the corridor which have been inserted. Doors to rooms 43, 44, 45, 46, 47, 49 and 50 are original three-panel doors. At the north end of the corridor on the north-west side there is a door opening giving access to an external steel staircase to the roof. This door opening is probably original although a modern door has been fitted.

Windows: All the window openings along the north-west side of the corridor are original. The windows are modern UPVC replacements but the original ogee moulded sills remain *in situ*. The borrowed light opening to room 43 is original and retains its original steel frame with two pivoting casements.

Radiators: There are two original, cast iron radiators on the north-west wall; one below the fourth window from the north-east end and the other below the second window from the south-west end.

6.3.10 Room 43

Original function: Probably a bedroom and lobby/dressing room to the north-west, now forming one room. The lobby end may also have been open to the north-west half of room 44.

Floor: Original floorboards, 0.15m wide, now carpeted.

Ceiling: Original plastered ceiling.

Walls: The north-west, north-east and south-east walls are original and have original plain chamfered skirting and ogee moulded picture rails. The original wall dividing the bedroom (to the south-east) from the lobby (to the north-west) has been removed, but the scars from its removal are still visible in the remaining north-east wall and ceiling. The south-west wall is an inserted stud wall covered with hardboard and stuffed with straw.

Doors: The door opening to the corridor is original with a plain chamfered door frame. The door itself is an original three-panel door with original brass door handle and lock.

Windows: The window opening in the south-east wall is original. The window itself is a modern UPVC replacement but the original ogee moulded sill survives. The borrowed light opening to the corridor (room 42) is original and retains its original steel frame with two pivoting casements.

Radiators: There is a c1960-70s radiator below the window in the south-east wall.

6.3.11 Room 44

Original function: Probably a bedroom and lobby/dressing room to the north-west, now forming one room. The lobby end may also have been open to the north-west half of room 43.

Floor: Original floorboards, 0.15m wide, now carpeted.

Ceiling: Original plastered ceiling.

Walls: The north-west, south-east and south-west walls are original and have original plain chamfered skirting and ogee moulded picture rails. The original wall dividing the bedroom (to the south-east) from the lobby (to the north-west) has been removed, but the scars from its removal are still visible in the remaining south-west wall and ceiling. The north-east wall is an inserted stud wall covered with hardboard and stuffed with straw.

Doors: The door opening to the corridor is original with a plain chamfered door frame. The door itself is an original three-panel door with original brass door handle and lock. There is another original door opening giving access to room 45 (another former bedroom). It too has an original three-panel door.

Windows: The window opening in the south-east wall is original. The window itself is a modern UPVC replacement but the original ogee moulded sill survives.

Radiators: There is a c1960-70s radiator below the window in the south-east wall.

6.3.12 Room 45

Original function: Bedroom.

Floor: Original floorboards, 0.15m wide, now carpeted.

Ceiling: Original plastered ceiling with modern lighting.

Walls: Original walls with original plain chamfered skirting and ogee moulded picture rail.

Doors: The door openings to the corridor and room 44 are original openings with plain chamfered door frames. The doors are both original three-panel doors, the one to the corridor has original brass handles and lock.

Windows: The window opening in the south-east wall is original. The window itself is a modern UPVC replacement but the original ogee moulded sill survives.

Radiators: There is a c1960-70s radiator on the south-east wall under the window.

Fittings: There is an inserted cupboard with shelving on the north-west wall.

6.3.13 Room 46

Original function: Bedroom.

Floor: Original floorboards, 0.15m wide, now carpeted.

Ceiling: Original plastered ceiling with modern lighting.

Walls: Original walls with original plain chamfered skirting and ogee moulded picture rail.

Doors: The door opening to the corridor is original with plain chamfered door frame. The door is an original three-panel door with original brass handles and lock.

Windows: The window opening in the south-east wall is original. The window itself is a modern UPVC replacement but the original ogee moulded sill survives.

Radiators: There is a c1960-70s radiator on the south-east wall under the window.

6.3.14 Room 47

Original function: Bedroom.

Floor: Original floorboards, 0.15m wide, now carpeted.

Ceiling: Original plastered ceiling with modern lighting.

Walls: Original walls with original plain chamfered skirting and ogee moulded picture rail.

Doors: The door opening to the corridor is original with plain chamfered door frame. The door is an original three-panel door with original brass handles and lock.

Windows: The window opening in the south-east wall is original. The window itself is a modern UPVC replacement but the original ogee moulded sill survives.

Radiators: There is a c1960-70s radiator on the south-east wall under the window.

Fittings: There is an inserted cupboard with shelving (removed) on the north-west wall.

6.3.15 Room 48

Original function: Bedroom.

Floor: Original floorboards, 0.15m wide, now carpeted.

Ceiling: Original plastered ceiling with modern lighting.

Walls: Original walls with original plain chamfered skirting. The picture rail has been removed.

Doors: The door opening to the corridor is original with plain chamfered door frame. The door is modern replacement with original brass handles and lock reused.

Windows: The window opening in the south-east wall is original. The window itself is a modern UPVC replacement but the original ogee moulded sill survives.

Radiators: There is a c1960-70s radiator on the south-east wall under the window.

6.3.16 Room 49

Original function: Corner room, possible office or store room.

Floor: Original floorboards, 0.15m wide, now carpeted.

Ceiling: The ceiling in this room is approximately 0.4m higher than those in the bedrooms to the north-east. Original plastered ceiling with modern lighting.

Walls: All the walls are original and form a corner room which is a trapezium in plan. They all have a plain chamfered skirting.

Doors: The door opening to the corridor is original with plain chamfered door frame. The door is an original three-panel door with original brass handles and lock. There is an inserted, modern door giving access to room 50 in the west wall.

Windows: The window openings in the south-east wall are original. The windows themselves are modern UPVC replacements but the original ogee moulded sills survive.

Radiators: There is a c1960-70s radiator on the south-east wall under the window.

6.3.17 Room 50

Original function: Classroom.

Floor: Original floorboards, 0.15m wide, now carpeted.

Ceiling: The ceiling in this room is approximately 0.4m higher than those in the bedrooms to the north-east. Original plastered ceiling with modern suspended strip lighting.

Walls: All the walls are original and form a corner room which is a trapezium in plan. They all have a plain chamfered skirting and there are ogee moulded dado rails on the south-east and part of the north-west walls.

Doors: The door opening to the corridor is original with plain chamfered door frame. The door is an original three-panel door with original brass knobs. The door opening in the east wall giving access to room 49 is a modern insertion.

Windows: The window openings in the south-east wall are original. The windows themselves are modern UPVC replacements but the original ogee moulded sills survive.

Radiators: There are two c1960-70s radiators on the south-east wall under the eastern three windows and an original cast iron radiator under the western two windows.

6.3.18 Room 51

Original function: Rooms 51, 52 and 53 were all originally part of a single, large science laboratory with tiled walls and an underfloor drainage system. The present rooms were partitioned off by the Council for use as offices.

Floor: The floor level in these three rooms as well as room 55 and in the corridor to the north of them is raised up by 0.15m higher than the floor levels elsewhere on the first floor. This is part of the original design, allowing for a below floor drainage system and most likely, piped gas supply to the science lab. A section of the below-floor drainage was seen at the time of the survey; it comprised a gully made from cream coloured, glazed ceramic interlocking sections 0.15m wide, set in a concrete skin and capped with reused roofing slates held down with iron straps. The floorboards covering the drainage system are original narrow boards, 0.10m wide and are now covered by modern carpet.

Ceiling: Original plastered ceiling with modern strip lighting.

Walls: The north, east and south walls are original. They are all now covered with plasterboard dry-lining but the original tiled surface remains intact behind the plasterboard. The tiles are square and white with a course of square brown tiles at the base of the walls. Where the plasterboard had been removed the white tiles had cut-out illustrations of plants, flowers and butterflies stuck to them, presumably dating to the 1960s or earlier. The west wall is a modern, stud partition covered with sound proofing tiles.

Doors: The door opening to the corridor is original with plain chamfered door frame. The door itself is a modern replacement.

Windows: The window opening in the south wall (shared with room 52) is original. The window itself is a modern UPVC replacement but the original ogee moulded sill survives.

Radiators: There is a c1960-70s radiator on the south wall under the window.

6.3.19 Room 52

Original function: Rooms 51, 52 and 53 were all originally part of a single, large science laboratory with tiled walls and an underfloor drainage system. The present rooms were partitioned off by the Council for use as offices.

Floor: The floor level in these three rooms as well as room 55 and in the corridor to the north of them is raised up by 0.15m higher than the floor levels elsewhere on the first floor. This is part of the original design, allowing for a below floor drainage system and most likely, piped gas supply to the science lab. A section of the below-floor drainage was seen at the time of the survey; it comprised a gully made from cream coloured, glazed ceramic interlocking sections 0.15m wide, set in a concrete skin and capped with reused roofing slates held down with iron straps. The floorboards covering the drainage system are original narrow boards, 0.10m wide and are now covered by modern carpet.

Ceiling: Original plastered ceiling with modern strip lighting.

Walls: The north and south walls are original. They are both now covered with plasterboard dry-lining but the original tiled surface remains intact behind the plasterboard. The tiles are square and white with a course of square brown tiles at the base of the walls. Where the plasterboard had been removed on the south wall the white tiles had cut-out illustrations of flowers stuck to them, presumably dating to the 1960s or earlier. The east and west walls are modern, inserted stud partitions.

Doors: The door opening to the corridor appears to be original with plain chamfered door frame. The door itself is a modern replacement.

Windows: The window opening in the south wall (shared with room 51) is original. The window itself is a modern UPVC replacement but the original ogee moulded sill survives.

Radiators: There are two c1960-70s radiators on the south wall under the window.

6.3.20 Room 53

Original function: Rooms 51, 52 and 53 were all originally part of a single, large science laboratory with tiled walls and an underfloor drainage system. The present rooms were partitioned off by the Council for use as offices.

Floor: The floor level in these three rooms as well as room 55 and in the corridor to the north of them is raised up by 0.15m higher than the floor levels elsewhere on the first floor. This is part of the original design, allowing for a below floor drainage system and most likely, piped gas supply to the science lab. A section of the below-floor drainage was seen at the time of the survey; it comprised a gully made from cream coloured, glazed ceramic interlocking sections 0.15m wide, set in a concrete skin and capped with reused roofing slates held down with iron straps. The floorboards covering the drainage system are original narrow boards, 0.10m wide and are now covered by modern carpet.

Ceiling: Original plastered ceiling with modern strip lighting.

Walls: The north, south and west walls are original. These are now covered with plasterboard dry-lining but the original tiled surface remains intact behind the plasterboard. The tiles are square and white with a course of square brown tiles at the base of the walls. The east wall is a modern, inserted stud partition.

Doors: The door opening to the corridor is original with plain chamfered door frame. The door is an original three-panel door, with the top panel replaced with reinforced glass. The door opening in the west wall, giving access to room 55 is also original and has an original three panel door with the top panel containing original margin lights.

Windows: The window opening in the south wall is original. The window itself is a modern UPVC replacement but the original ogee moulded sill survives. In the north wall dividing room 53 from the corridor there is a borrowed light which may be original but now has an inserted two-light frame.

Radiators: There are two c1960-70s radiators on the south wall under the window.

6.3.21 Room 54

Original function: First floor corridor in south-west range.

Floor: Original Parquet flooring up to the door opening to room 52 where the floor steps up by 0.15m at which point the original surface is narrow boards 0.10m wide. This is part of the original design, allowing for a below floor drainage system and most likely, piped gas supply to the science lab. The corridor then steps down again where it turns at right-angles to the north. From here northwards there is a lower level parquet floor.

Ceiling: Original plastered ceiling with original roof lights made from prismatic glass tiles. There are also two original glass globe pendant lights.

Walls: Original walls with original plain chamfered skirting and plain chamfered door frames.

Doors: All the door openings are original and have plain chamfered door frames except for the door opening to room 57 which is a modern insertion. The doors to rooms 53, 58 and 59 and the stairs, room 4, are original three-panel doors. The double fire doors to the east are a modern insertion.

Windows: The window openings in the north wall are original. The window itself is a modern UPVC replacement but the original ogee moulded sills remain *in situ*. In the south wall dividing the corridor room 53 there is a borrowed light which may be original but now has an inserted two-light frame.

Radiators: There is an original, cast iron radiator on the north wall below the western window.

6.3.22 Room 55

Original function: Science room connected with the science lab (rooms 51, 52 and 53). This also has tiled walls and an underfloor drainage system.

Floor: The floor level in this room along with that in rooms 51, 52, 53 and the adjacent section of corridor is raised up by 0.15m higher than the floor levels elsewhere on the first floor. This is part of the original design, allowing for a below floor drainage system and most likely, piped gas supply to the science lab. The floorboards covering the drainage system are original narrow boards, 0.10m wide and are now covered by modern carpet.

Ceiling: Original plastered ceiling with modern strip lighting.

Walls: All the walls are original. These are now covered with plasterboard dry-lining but the original tiled surface remains intact behind the plasterboard. The tiles are square and white with a course of square brown tiles at the base of the walls.

Doors: This room was originally only accessed via the science lab to the east. The door opening in the east wall is original with plain chamfered door frame. The door is an

original three panel door with the top panel containing original margin lights. Another door opening (now blocked) has been inserted in the north wall.

Windows: The window openings in the south wall are original. The windows themselves are modern UPVC replacements but the original ogee moulded sills survive.

Radiators: There is a c1960-70s radiator on the south wall under the windows.

6.3.23 Room 56

Original function: Office or store room. Originally only accessed via the large classroom (now rooms 57 and 58) to the north.

Floor: Original parquet floor.

Ceiling: Original plastered ceiling with modern strip lighting.

Walls: All the walls are original and form a corner room. They all have a plain chamfered skirting.

Doors: The door opening to room 57 is original with plain chamfered door frame. The door itself is a modern replacement. There is an inserted, modern door giving access into the first floor link passage in the west wall. This has been inserted in an original window opening.

Windows: The window openings in the south and west walls are original. The windows themselves are modern UPVC replacements but the original ogee moulded sills survive.

Radiators: There is a c1960-70s radiator on the south wall under the window.

6.3.24 Room 57

Original function: This room was originally part of a large classroom along with room 58. It was partitioned off from room 58 by the Council to form a corridor giving access to the Link Building.

Floor: Original Parquet flooring.

Ceiling: Original plastered ceiling with modern strip lighting.

Walls: The north wall dividing rooms 57 and 58 is a modern, plasterboard insertion. All the other walls are original, but the east wall has had a modern door opening inserted in it and so has the south wall (now blocked) which gave access to room 55. On the east and south walls there is original tongue and groove panelling with plain chamfered edges up to dado level topped with an ogee moulded dado rail.

Doors: The door opening to room 56 is original with plain chamfered door frame. The door itself is a modern fire door. The door to the corridor (room 54) and the blocked door to room 55 are both modern insertions.

Windows: The window opening in the west wall is original. The window itself is a modern UPVC replacement but the original ogee moulded sill remains *in situ*.

Radiators: There is a c1960-70s radiator on the west wall under the window.

6.3.25 Room 58

Original function: This room was originally part of a large classroom along with room 57. It was partitioned off by the Council to form a corridor in room 57 giving access to the Link Building.

Floor: Original Parquet flooring now overlain with modern carpet.

Ceiling: Original plastered ceiling with modern strip lighting.

Walls: The south wall dividing rooms 57 and 58 is a modern, plasterboard insertion. All the other walls are original. On the north, east and west walls there is original tongue and groove panelling with plain chamfered edges up to dado level topped with an ogee moulded dado rail. An area in the north-east corner of the room has been partitioned off fairly recently with sound proof glass walls.

Doors: The double door opening to the corridor is original with plain chamfered door frame. The doors are original three-panel doors with reinforced glass inserted in the top panels.

Windows: The window openings in the north and west walls are original. The windows themselves are modern UPVC replacements but the original ogee moulded sills remain *in situ*.

Radiators: There two c1960-70s radiators on the north wall under the windows and another two on the west wall under the windows.

6.3.26 Room 59

Original function: Possible office or small classroom.

Floor: Original parquet floor covered by modern carpet.

Ceiling: Original plastered ceiling with modern strip lighting. The water tank is located on the flat roof above this room.

Walls: All the walls are original and form a corner room. They all have a plain chamfered skirting. Adjacent to the door, the west wall widens. This hides a flue from the boiler room (room 60) in the basement leading to the roof.

Doors: The door opening to the corridor is original with plain chamfered door frame. The door is an original three-panel door with the top panel replaced with reinforced glass.

Windows: The window openings in the north and east walls are original. The windows themselves are modern UPVC replacements but the original ogee moulded sills survive.

Radiators: There are two c1960-70s radiators, one on the north wall, and the other on the east wall.

6.4 Interior basement

(See Fig 67 for room location).

6.4.1 Room 60

Original function: Boiler room.

Floor: Original poured concrete with shuttered concrete steps leading down into the room. Within the room there are three machine bases made from shuttered concrete.

Ceiling: Original shuttered, reinforced concrete ceiling with modern lighting.

Walls: The basement comprises a walled landing area at ground level, a walled staircase leading down to the boiler room to the east and also a walled-off small room below the stairs. All the walls from ground level upwards are original concrete blockwork. All the walls below ground level are original shuttered concrete. At the base of the stairs, the west wall widens. This hides a flue to extract gases/smoke from burnt fuels heating the boiler and there is a small inspection hatch on its south side. At the top of the east wall the original fowl pipes for the toilets in the room above are exposed. On the eastern wall of the stairs, the original timber stair rail remains *in situ*.

Doors: The door opening to the boiler room from outside is original although the louvered timber door is a later replacement. The original door opening to the small room under the stairs has been partially blocked.

Fittings: The original boiler and pump have been removed but much of the original pipework and faucet handles, all made by Crane, remain *in situ*. Water appears to have been fed into the room from pipes in the north wall. The pipes feeding both hot and cold water up into the building to serve taps and radiators are all located on the south wall. At the top of the stairs on the west side of the door there is an original electricity service head, made by Henley, for the incoming supply.

Vent: To the east of the main entrance there is an original, wide, louvered vent.

7 The Link Building

(See Figs 52-71).

7.1 General description

Penwith District Council acquired the property in 1974. It was most probably in the 1980s that the Link Building was built. This structure is first shown on the 1988 OS map, but is not illustrated on the 1968 OS map. It was designed and built to provide a new reception area for the council offices and to link the existing buildings (the Quadrangle to the north-east and York house to the south-west) together.

It is a two-storey building with the main reception and office rooms at ground floor level and a glass panelled link passage at first floor level. Main parts of the structure are brick-built, but there are also some timber clad elements. Areas of the building that are timber clad (including the link passage) have asphalt covered flat roofs, and the brick-built sections have sunken, sloping slate covered roofs surrounded with low, brick-built parapets.

The original windows and glazed entrance to the north all have aluminium frames.

The layout was designed to provide a large main reception area and desk at ground floor level with interview rooms leading off from this to the east and west as well as toilets to the south and a large office to the north-west. Behind the secure reception desk there is also a safe room.

7.2 Ground floor

(See Fig 67 for room locations).

7.2.1 Room 61

Function: Reception.

Floor: Carpeted concrete.

Ceiling: Suspended fibreboard tiles except in the area just north of the desk where the ceiling is double height and has been plastered.

Walls: Exposed, painted brickwork and some internal stud walls.

Doors: The front main entrance has a glass sliding door in aluminium frame. The rear external door has two glass panels in a timber frame, as do many of the internal doors. Other internal doors are plain and unglazed.

Windows: Large plate aluminium windows.

Fittings: the main desk is varnished timber and has a glass screen above it.

7.2.2 Room 62

Function: Small interview room and corridor.

Floor: Carpeted concrete.

Ceiling: Suspended fibreboard tiles with insulation above and strip lighting.

Walls: Exposed, brickwork and internal stud walls.

Doors: Plain, unglazed fire doors.

Windows: Large plate aluminium windows in corridor.

Fittings: the desk is divided in two by a reinforced glass screen.

7.2.3 Room 63

Function: Large interview room.

Floor: Carpeted concrete.

Ceiling: Suspended fibreboard tiles with insulation above and strip lighting.

Walls: Exposed, brickwork and internal stud walls.

Doors: Plain, unglazed fire doors.

Fittings: Large interview desk spanning the width of the room.

7.2.4 Room 64

Function: Large interview room.

Floor: Carpeted concrete.

Ceiling: Suspended fibreboard tiles with insulation above and strip lighting.

Walls: Exposed, brickwork and internal stud walls.

Doors: Plain, unglazed fire doors.

Windows: Large plate aluminium windows.

Fittings: Large interview desk spanning the width of the room.

7.2.5 Room 65

Function: Small toilet.

Floor: Concrete.

Ceiling: Plastered ceiling.

Walls: Tiled up to mid-point then plastered above.

Doors: Plain, unglazed fire door.

Windows: Aluminium window.

7.2.6 Room 66

Function: Ladies toilet.

Floor: Concrete.

Ceiling: Plastered ceiling.

Walls: Tiled up to mid-point then plastered above.

Doors: Plain, unglazed fire door.

Windows: Aluminium window.

7.2.7 Room 67

Function: Men's toilet.

Floor: Concrete.

Ceiling: Plastered ceiling.

Walls: Tiled up to mid-point then plastered above.

Doors: Plain, unglazed fire door.

7.2.8 Room 68

Function: Reception desk and adjoining office.

Floor: Carpeted concrete.

Ceiling: Suspended fibreboard tiles in the area above the desk with a plaster ceiling above the office.

Walls: Exposed painted brickwork around the desk and plastered walls elsewhere.

Doors: Fire door with two narrow, vertical glazed panels.

Windows: UPVC windows.

Fittings: the main desk is varnished timber and has a glass screen above it.

7.2.9 Room 69

Function: Safe room.

Floor: Vinyl covered concrete.

Ceiling: Plastered ceiling.

Walls: Exposed brickwork to the east and plastered walls elsewhere.

Doors: Fire door with two narrow, vertical glazed panels.

Windows: UPVC window.

Fittings: Contains safes.

7.2.10 Room 70

Function: Corridor.

Floor: Carpeted concrete.

Ceiling: Suspended fibreboard tiles.

Walls: Exposed painted brickwork.

Doors: Fire doors.

7.2.11 Room 71

Function: Office.

Floor: Carpeted concrete.

Ceiling: Suspended fibreboard tiles with strip lighting.

Walls: Exposed brickwork and internal stud walls.

Doors: Fire door with two narrow, vertical glazed panels

Windows: Large plate aluminium windows.

7.3 First floor

(See Fig 68 for room location).

7.3.1 Room 72

Function: First floor link passage between the Quadrangle and York House.

Floor: Carpeted.

Ceiling: Plastered.

Walls: Exposed brickwork and glass and panelled stud walls.

Doors: Fire doors.

Windows: Large plate aluminium windows.

8 References

8.1 Primary sources

Ordnance Survey, MasterMap Topography

RAF vertical photograph (1946) showing the Quadrangle

8.2 Publications

Dudley, P, 2016. *St Clare, Penzance, Cornwall – proposed Health Centre - Heritage Impact Assessment (Report 2016R025)*

Historic England, 2016. *Understanding Buildings, A Guide to Good Recording Practice* (HE publication)

Historic England, 2015. *Digital image capture and file storage, Guidance for best practice* (HE publication)

Sturgess, J, 2015. *St Claire, Penzance, Cornwall – Heritage Assessment*, Cornwall Archaeological Unit, Cornwall Council (Report 2015R076)

8.3 Websites

<http://www.heritagegateway.org.uk/gateway/> Online database of Sites and Monuments Records, and Listed Buildings

9 Project archive

The CAU project number is **146679**

The project's documentary, digital, photographic and drawn archive is maintained by Cornwall Archaeological Unit

Electronic data is stored in the following locations:

Project admin: \\Sites\ Sites P\PENZANCE\Penzance St Clare's HBR 146679

Digital photographs: \\Historic Environment (Images)\SITES.M-P\Sites P\Penzance St Clare HBR

Electronic drawings: \\Historic Environment (CAD)\ R:\Historic Environment (CAD)\CAD Archive\Sites P-Q\Penzance St Clare quadrangle HBR

Historic England/ADS OASIS online reference: cornwall2-286019



Fig 3 RAF vertical photograph (1946) showing the Quadrangle.

Quadrangle: North range



Fig 4 Quadrangle: North range, east end of north elevation.



Fig 6 Quadrangle: North range, east elevation.



Fig 5 Quadrangle: North range, west end of north elevation.



Fig 7 Quadrangle: North range, south elevation.



Fig 8 Quadrangle: North range, west elevation.

Quadrangle: South-east range



Fig 9 Quadrangle: South-east range, south-east elevation.



Fig 10 Quadrangle: South-east range, north-west elevation.



Fig 11 Quadrangle: South-east range, north-west elevation and porch.

Quadrangle: South-west range



Fig 12 Quadrangle: South-west range, north elevation.



Fig 13 Quadrangle: South-west range, north elevation.



Fig 14 Quadrangle: South-west range, east elevation.



Fig 15 Quadrangle: South-west range, south elevation.



Fig 16 Quadrangle: South-west range, west elevation.



Fig 17 Quadrangle: cast iron down pipe.

Quadrangle: Room examples



Fig 18 Quadrangle: example of classroom (room 58).



Fig 19 Quadrangle: example of office (room 12).



Fig 20 Quadrangle: example of bedroom (room 45)



Fig 21 Quadrangle: example of toilet (room 37).



Fig 22 Quadrangle: Boiler room (60) looking north.

Quadrangle: Original features



Fig 23 Quadrangle: example of parquet floor.



Fig 27 Quadrangle: stair detail.



Fig 24 Quadrangle: example of terrazzo floor in toilets and bathrooms.



Fig 28 Quadrangle: roof light in room 54.



Fig 25 Quadrangle: narrow board floor in first floor corridor (room 54).



Fig 29 Quadrangle: pendant globe light in room 54.



Fig 26 Quadrangle: below floor drainage in science lab (room 51).



Fig 30 Quadrangle: brass light switch in room 40.

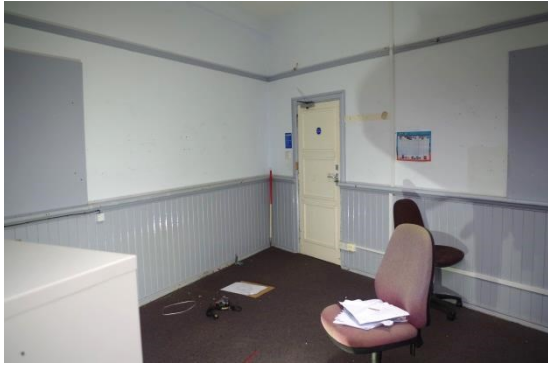


Fig 31 Quadrangle: example of wall panelling, dado and picture rails in room 18 looking east.



Fig 35 Quadrangle: example of tiling in bathrooms and toilets (room 39).



Fig 32 Quadrangle: detail of wall panelling and dado rail (room 9a).



Fig 36 Quadrangle: example of tiling and sinks in toilets (room 5).



Fig 33 Quadrangle: peg rail in room 34.

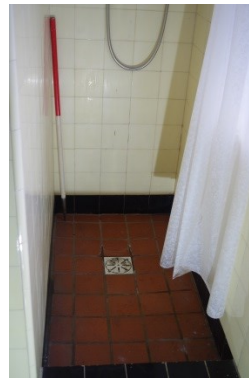


Fig 37 Quadrangle: example of shower (room 20).



Fig 34 Quadrangle: built-in cupboard in room 17.



Fig 38 Quadrangle: example of tiles in science lab (room 51).



Fig 39 Quadrangle: example of cast iron radiator (room 11).



Fig 40 Quadrangle: example of cast iron radiator (room 28).



Fig 41 Quadrangle: example of three panel door (room 43).



Fig 42 Quadrangle: example of brass door handle (room 43).



Fig 43 Quadrangle: example of door with margin lights (room 53).



Fig 44 Quadrangle: example of cubicle doors (room 5).



Fig 45 Quadrangle: example of cubicle door handle and lock (room 39).



Fig 46 Quadrangle: internal porch doors (room 14).



Fig 47 Quadrangle: example of moulded window sill (room 2).



Fig 48 Quadrangle: example steel frame borrowed light to stairs (room 19).



Fig 49 Quadrangle: example steel frame borrowed light (room 43).



Fig 50 Quadrangle: electricity service head at top of room 60.



Fig 51 Quadrangle: examples of water faucet handles on pipes in boiler room (room 60).

Link Building: Exterior



Fig 52 Link Building: North elevation main entrance.



Fig 53 Link Building: North elevation.



Fig 54 Link Building: North elevation roof.



Fig 55 Link Building: East elevation.



Fig 56 Link Building: South elevation.



Fig 57 Link Building: West elevation.

Link Building: Interior

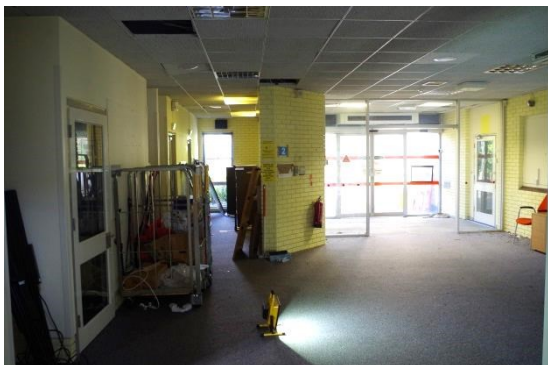


Fig 58 Link Building: Reception (room 61) looking north.



Fig 59 Link Building: Reception (room 61) looking south-east.



Fig 60 Link Building: Reception (room 61) looking west.



Fig 61 Link Building: Reception (room 61) looking up to link corridor.



Fig 62 Link Building: Office (room 68) looking south-west.



Fig 63 Link Building: Corridor (room 70) looking north.



Fig 64 Link Building: Office (room 71) looking west.

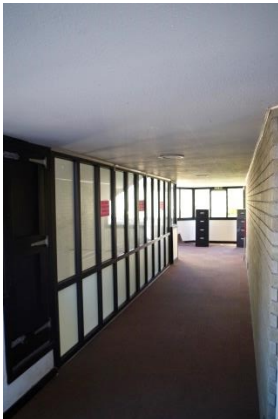


Fig 65 Link Building: Link passage (room 72) looking east.



Fig 66 Link Building: Link passage (room 72) looking south.

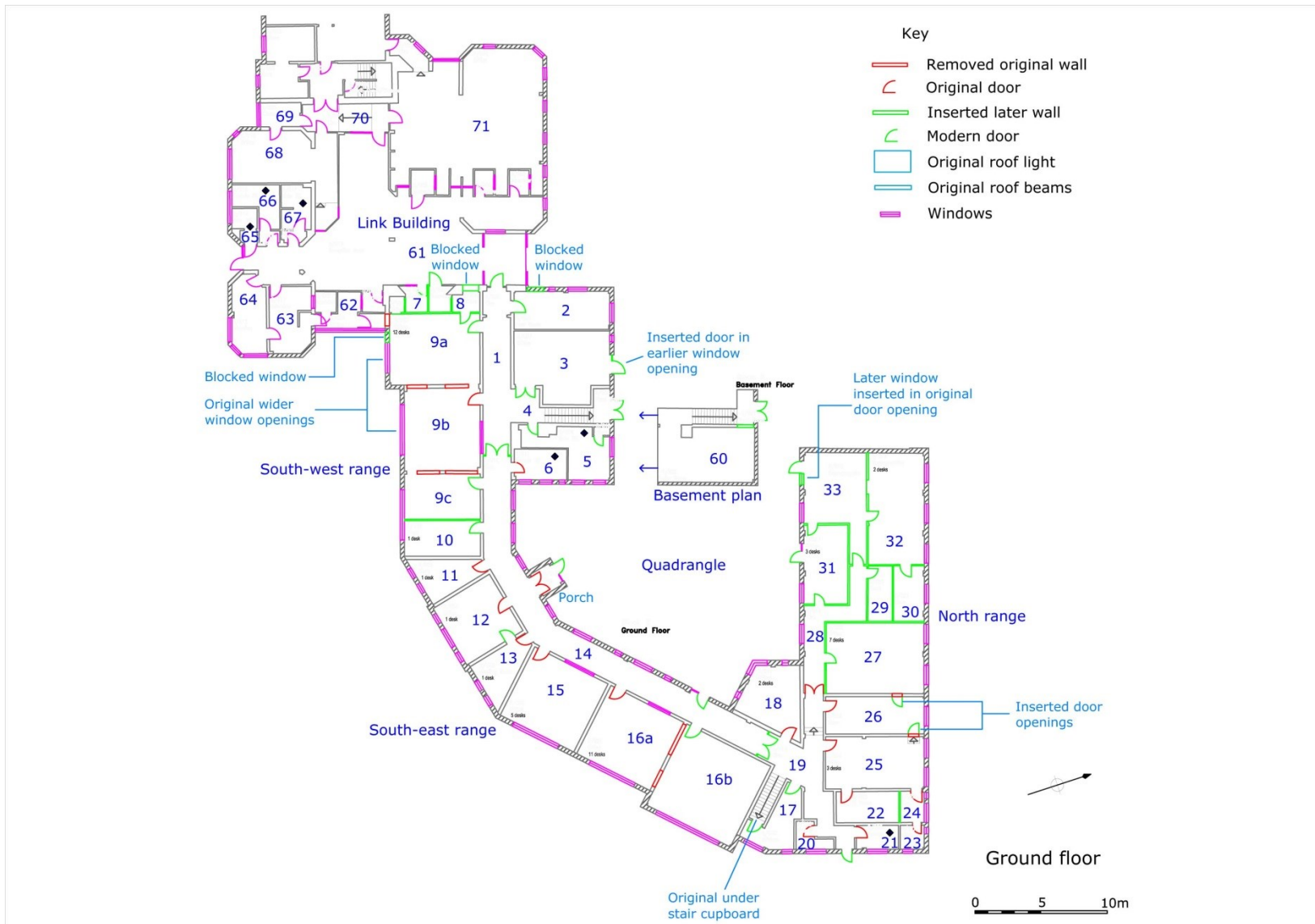


Fig 67 Ground floor plan showing room numbers.

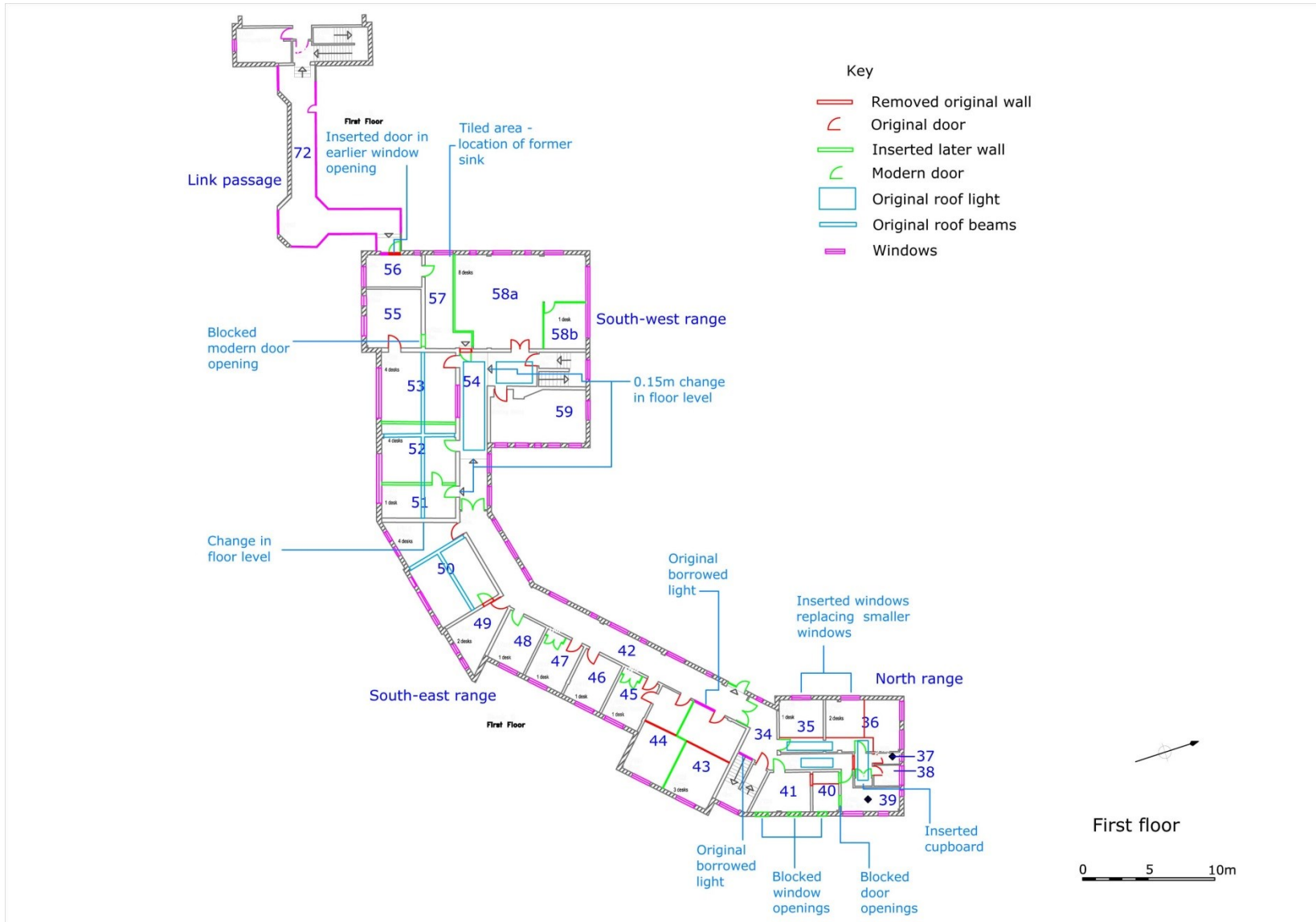
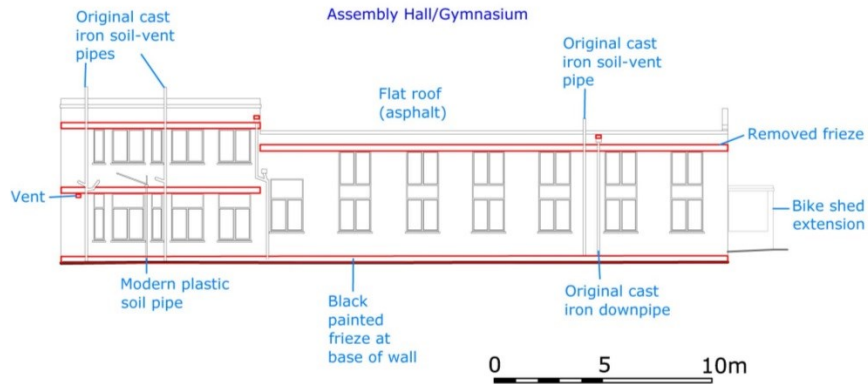


Fig 68 First floor plan showing room numbers.

North elevation of North Range



North-west elevation of South-east range

North elevation of South-west range

North elevation of Link Building

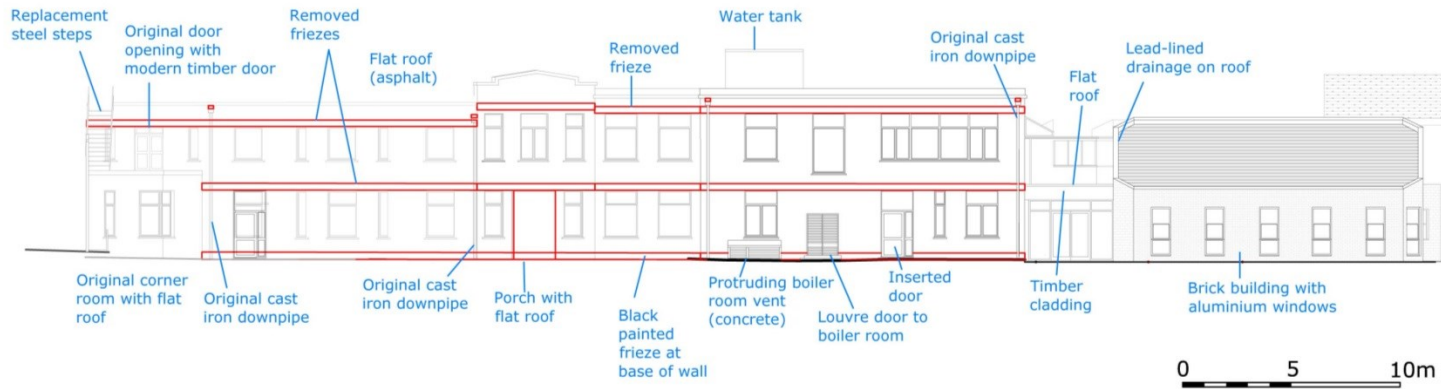


Fig 69 North and north-west elevations of Quadrangle and Link Building.

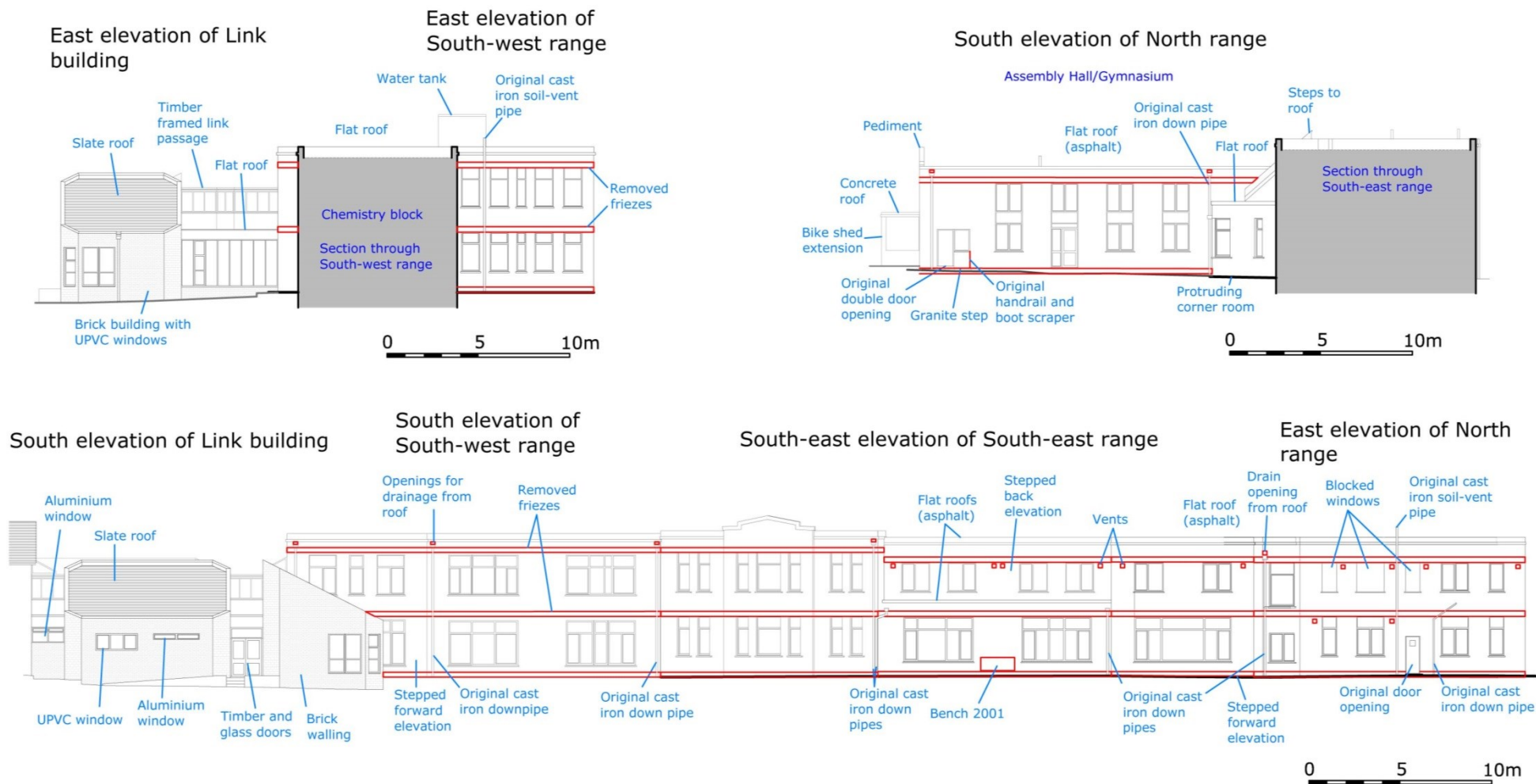


Fig 70 East, south-east and south elevations of Quadrangle and Link Building.

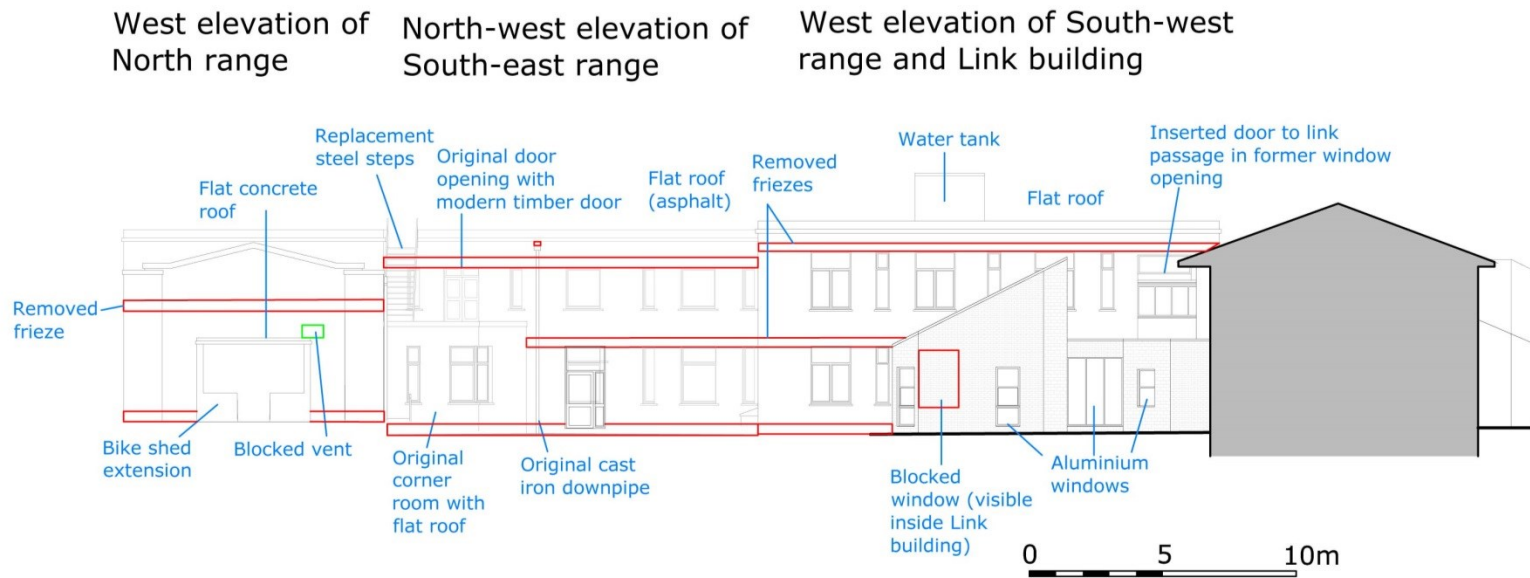


Fig 71 West and north-west elevations of Quadrangle and Link Building.

Cornwall Archaeological Unit

Fal Building, County Hall, Treyew Road, Truro, Cornwall,
TR1 3AY

(01872) 323603
enquiries@cau.org.uk
www.cau.org.uk

