



ROSS & CROMARTY ARCHAEOLOGICAL SERVICES

# ***PROPOSED WIND FARM DEVELOPMENT GLEN ULLINISH, SKYE***

## **ARCHAEOLOGICAL DESK-BASED ASSESSMENT AND WALKOVER SURVEY**



National Grid Reference

**NG 34591 42913 (Centred)**

Site Code

**GUL12**

Author

**Lynn Fraser & Mary Peteranna**

Report Number

**2012-9/GUL12**

Client

**Green Cat Renewables Ltd**

Date

**18-05-2012**

OASIS No.

**rosscrom1-128292**

## **CONTENTS**

<b>List of Figures</b>	<b>2</b>
<b>List of Plates</b>	<b>2</b>
<b>Acknowledgements</b>	<b>2</b>
<b>Summary</b>	<b>3</b>
<b>1 Introduction</b>	<b>3</b>
<b>2 Site Location</b>	<b>3</b>
<b>3 Archaeological and Historical Background</b>	<b>5</b>
<b>4 Methodology</b>	<b>5</b>
<b>4.1 Desk-Based Assessment</b>	
<b>4.2 Walkover Survey</b>	
<b>5 Results</b>	<b>6</b>
<b>5.1 Desk-Based Assessment</b>	<b>6</b>
<b>5.1.1 Cartographic Sources</b>	
<b>5.1.2 Highland Council Historic Environment Record</b>	
<b>5.2 Walkover Survey Results</b>	<b>7</b>
<b>5.2.1 Red Area</b>	
<b>5.2.2 Orange Area</b>	
<b>5.2.3 Access Tracks</b>	
<b>6 Discussion</b>	<b>18</b>
<b>7 Recommendations</b>	<b>19</b>
<b>8 References</b>	<b>21</b>
<b>Appendix 1 Gazetteer of Archaeological Sites</b>	<b>22</b>
<b>Appendix 2 Index of Photographs</b>	<b>54</b>

## LIST OF FIGURES

1 - Location of survey areas	4
2 - Location of archaeological features recorded	8
3 - Location of archaeological features in N half of the Red Area	9
4 - Location of archaeological features in S half of the Red Area	10
5 - Plan of sites 3, 7, 9 and 10	11
6 - Location of archaeological features in NE part of the Orange Area	13
7 - Location of archaeological features in SW part of the Orange Area	13
8 - Plan of sites 18 and 33	14
9 - Plan of Dun Arkaig Broch and the structures in the vicinity thereof	15
10 – Plan of site 12	16
11 – Location of the archaeological sites along the Access Tracks	17
12 – Plan of site 16	18
13 – Plan of settlement etc. with buffer zones shown	20
14 – Plan of structures etc. with buffer zones shown	20

## LIST OF PLATES

**Cover** - General view of the Ose valley

1 - Site 7 to the foreground, site 3 in the background	12
2 - Site 3h with a later twinning pen	12
3 - Site 9	12
4 - Site 1 with later twinning pen	12
5 - Dun Arkaig Broch	15
6 - Dun Arkaig sheepfold	15

## Acknowledgements

We wish to thank Jacqueline Marshall of Green Cat Renewables Ltd for commissioning the work. Fieldwork was carried out by Lynn Fraser and Mary Peteranna. All mapping, unless otherwise stated, is reproduced by permission of ProMap license LIG1044. Imagery reproduced under ESRI licensing and provided by Microsoft Bing Maps.

**PROPOSED WIND FARM DEVELOPMENT  
ARCHAEOLOGICAL DESK-BASED ASSESSMENT AND WALKOVER SURVEY  
GLEN ULLINISH, SKYE**

**Summary**

*An archaeological desk-based assessment and walkover survey was carried out between 3 and 5 May 2012 on behalf of Green Cat Renewables Ltd at Glen Ullinish, Skye in advance of a proposed wind farm development. The work was undertaken to establish the baseline extent and condition of any archaeological sites on the property, by recording and identifying any features that may be impacted by the proposed wind farm development. The survey identified 187 individual archaeological sites, including Post Medieval farmsteads, enclosures and boundary walls. Mitigation measures are proposed to safeguard the sites during the proposed development works.*

**1. Introduction**

- 1.1 A desk-based assessment and walkover survey of the visible archaeological monuments surviving within the boundaries of the proposed wind farm development site (centred at grid reference NG 34519 42913) was carried out by *Ross and Cromarty Archaeological Services* between 3 and 5 May 2012 (Figure 1). The survey was requested by Jacqueline Marshall on behalf of Green Cat Renewables Ltd because the areas proposed for the wind farm development are located in a landscape with a potential for sites of archaeological significance.
- 1.2 The purpose of the desk-based assessment and archaeological walkover survey was to identify and record the location and nature of any archaeological features of interest prior to the development, whilst assessing any potential adverse impacts and proposing an appropriate strategy of mitigation. The *Scottish Planning Policy 2010*<sup>1</sup> describes how archaeology should be managed when considering planning decisions and determining conditions for developments that have an impact on the historic environment.

**2. Site Location**

- 2.1 The proposed wind farm development is divided into three areas (Figure 1). The **Red** area lies to the northwest of the River Ose and is a mix of cultivated grassland on the lower slopes, with boggy heath on the upper slopes. The **Orange** area lies to the southeast of the River Ose and, although some of the lower slopes have been cultivated in the past, the whole area is generally boggy heathland. The proposed **Access Tracks** run from the A863 in a generally north/northeasterly direction; the northwest track cuts through boggy heathland, whereas the southeast track follows a drier route that has been grazed by livestock.
- 2.2 The general location of the survey areas comprises rough, undulating moorland on the valley sides of the River Ose; the southeast side being steeper than the northwest. There are also several small streams in the vicinity, which form wet boggy areas in places. The archaeological sites recorded during the survey are located on drier areas of ground. The underlying bedrock comprises Skye lava overlain with alluvial and till deposits<sup>2</sup>.

---

<sup>1</sup> The Scottish Government 2010

<sup>2</sup> British Geological Survey 2012

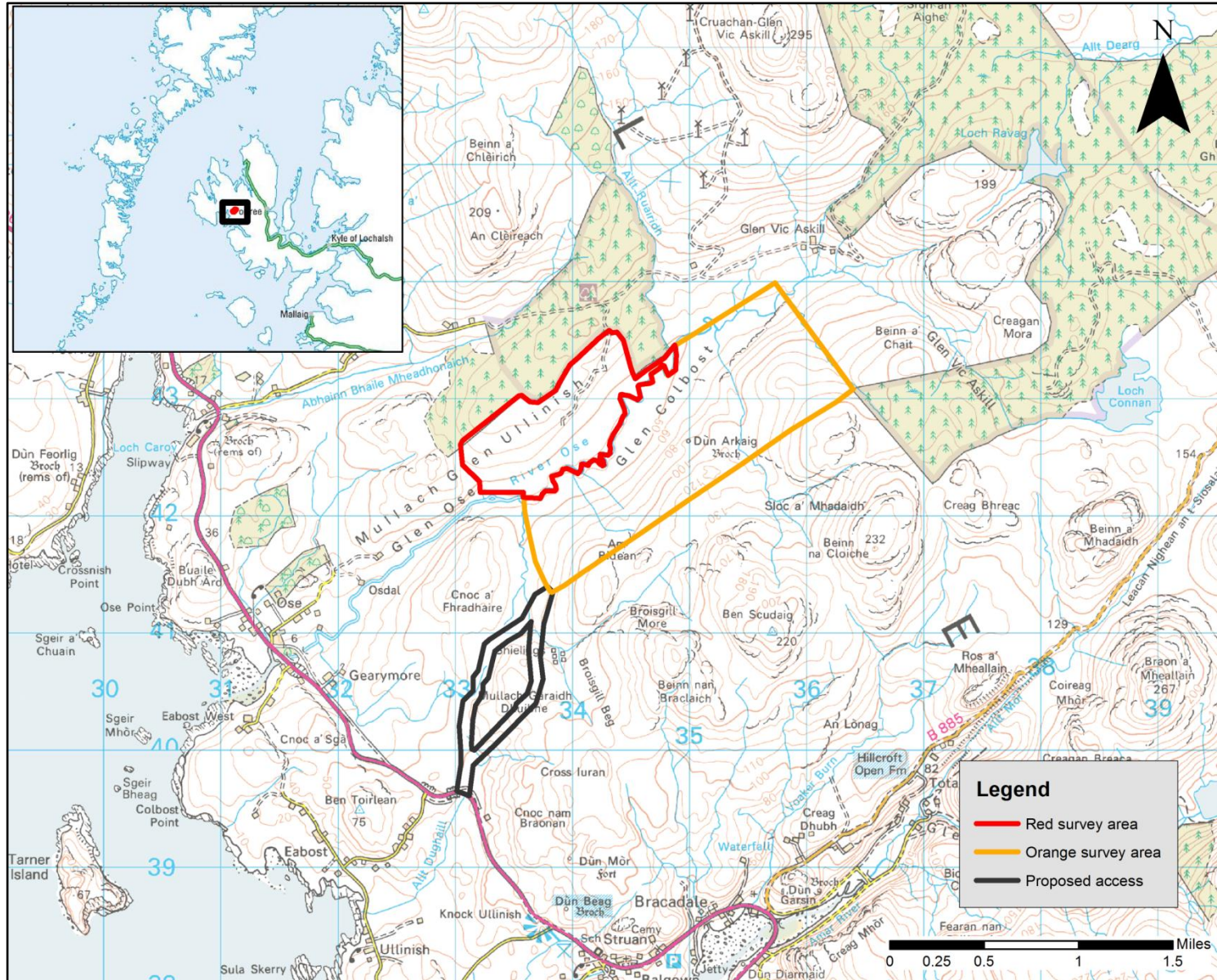


Figure 1: Location of survey areas

### 3. Archaeological and Historical Background

- 3.1 The development areas are situated on the north-eastern side of the A863 in the valley named *Mullach Glen Ullinish* and *Glen Colbost*, within the parish of Bracadale, Northwest Skye. The predominant way of life in the parish as a whole was subsistence farming; most of the ground was used for grazing black cattle and a small number of sheep with very little in the way of arable production. The people were poor and the population was decreasing through the 18<sup>th</sup> and 19<sup>th</sup> centuries due to agricultural improvement and clearance of the land to make way for large-scale sheep farming<sup>3</sup>. This period of Bracadale's history is well represented within the development areas.
- 3.2 In addition to the Post Medieval remains within and surrounding the development areas, there is also evidence of Skye's earlier inhabitants. Dun Arkaig, an Iron Age broch, is situated on a prominent basalt outcrop on the southeast side of the Ose valley within the development areas. Beyond the survey areas there are several brochs and cairns attesting to significant prehistoric activity in the area.

### 4. Methodology

The overall aim of this assessment was to identify and record any archaeological sites or features that might be affected by the proposed wind farm development within the three survey areas in the Ose valley and to propose mitigation as appropriate to ensure that archaeological evidence is not unnecessarily damaged or destroyed.

#### 4.1 Desk-based assessment

- 4.1.1 A desk-based assessment was conducted prior to commencement of the survey in order to assess the archaeological potential of the area based on previously recorded sites and any historical documentation. This was done in strict adherence to the *Institute for Archaeologists' (IfA) Standards and guidance for archaeological desk-based assessment*<sup>4</sup>.
- 4.1.2 The drawings of the area, as supplied by the client, were checked in detail against the Ordnance Survey 1:25000 Map, Highland Council's Historic Environment Record (HHER), the National Monuments Record of Scotland (NMRS) and Historic Scotland's records of scheduled monuments and listed buildings. Online satellite imagery and aerial photographs were checked and the map collections of the National Library of Scotland (NLS) were studied. Other literary sources were also consulted.

#### 4.2 Walkover survey

- 4.2.1 The objectives were to identify and record all archaeological sites within the proposed development areas.
- 4.2.2 Archaeological sites were recorded individually including using high-resolution digital photography where possible, while sketch survey drawings were produced where necessary. The individual site locations were plotted using DGPS technology and ArcPad software on a handheld Windows Mobile-based computer. Details relating to the individual sites and

---

<sup>3</sup> NSA

<sup>4</sup> IfA 2008

monuments located during the survey can be found in the Gazetteer of Archaeological Sites in Appendix 1.

- 4.2.3 Survey and recording methods from the Royal Commission on the Ancient and Historical Monuments of Scotland (RCAHMS)<sup>5</sup> were employed and all work was conducted in strict adherence to the *Institute for Archaeologists' (IfA) Code of Conduct*<sup>6</sup>.

## 5. Results

### 5.1 Desk-based assessment

#### 5.1.1 Historical mapping

Historical maps, unless otherwise stated, were consulted using the National Library of Scotland's online collection<sup>7</sup>.

- 5.1.1.1 The earliest map to show the area is John Thomson's Atlas of Scotland (1832), which shows a settlement called *Glen Ullinish*.

- 5.1.1.2 **First Edition Ordnance Survey Six-inch to the mile map** (Inverness-shire (Isle of Skye), Sheet XXVIII, surveyed 1877)

The 1st edition Ordnance Survey (OS) 6 inch-to-the-mile map<sup>8</sup> depicts a large sheepfold to the north of *Dun Arkaig*. In the south-western corner of the survey area there is a small settlement named *Glenosdale*, which comprises two roofed and three unroofed buildings together with a kale yard. Associated with the settlement are an enclosure and boundary dykes. A track can be seen running the length of the survey area from beyond the sheepfold to *Glenosdale* where it splits into two.

- 5.1.1.3 **Second Edition Ordnance Survey Six-inch to the mile map** (Inverness-shire – Isle of Skye Sheet XXVIII, revised 1901)

The 2<sup>nd</sup> edition OS 6 inch -to-the-mile map<sup>9</sup> again shows the sheepfold shown on the First Edition map. The track running from the sheepfold to *Glenosdale* is no longer extant and the land between these two sites has been reclaimed with an additional enclosure. *Glenosdale* is now denoted as *Glenostle* and is shown as a roofed building with a kale yard. There is a second roofed building towards the north-western end of the associated enclosure.

On the northwest side of the River Ose the settlement of *Glen Ullinish* is depicted. This comprises five unroofed buildings and seven enclosures of varying sizes.

---

<sup>5</sup> RCAHMS 2004

<sup>6</sup> IfA 2009

<sup>7</sup> NLS 2012

<sup>8</sup> NLS 2012

<sup>9</sup> NLS, 2012

### 5.1.2 Highland Historic Environment Record (HHER)

The Highland Historic Environment Record was consulted online<sup>10</sup> and the following sites or events were recorded in the survey area:

**1. MHG 25197 Broch, Dun Arkaig NG 34990 42610**

Dun Arkaig, a broch, occupies a commanding position halfway up the southeast slope of the Ose valley. It is situated midway along an oval basalt outcrop bounded by steep rock faces. It is in a dilapidated condition with the outer wall ranging in height from 1 – 2 m on the east, south and west and to the foundation on the north. The entrance is in the northeast but is blocked by stones; stones also fill the interior. A ruined gallery is situated in the eastern wall. Other features include an outer casing wall on the west side and traces of walling to an outwork beyond the broch.

**2. MHG 41789 Sheepfold, Dun Arkaig NG 35000 42730**

An unroofed structure and one enclosure are depicted on the 1<sup>st</sup> edition of the OS 6-inch map. One enclosure is shown on the current OS mapping.

**3. MHG 27655 Farmstead, Dun Arkaig NG 35000 42730**

There are several ruined houses, each with outbuildings and traces of others close by together with yards and enclosures.

**4. MHG 27657 Township, Glenostle NG 34150 42000**

What may be a township, comprising three roofed and two unroofed buildings, is depicted on the 1<sup>st</sup> edition of the OS 6-inch map. Five unroofed buildings, two enclosures and a field-system are shown on the 1992 OS 1:10000 map.

**5. MHG 54292 Stone and turf dyke, Osedale NG 33380 42239**

A substantial stone and turf dyke likely to be associated with the former township of Osedale.

## 5.2 Walkover Survey Results

The walkover survey revealed 187 archaeological sites (Figure 2) which relate to the prehistoric and Post Medieval occupation of the area. The Gazetteer of Archaeological Sites (Appendix 1) provides details of the 187 sites identified during the survey.

### 5.2.1 Conditions

The survey area was walked over and surveyed over two extended days, 4 and 5 May 2012, during generally good weather. Conditions on the ground were fairly good, although wet underfoot in parts. Extremely boggy ground in some areas made survey impossible and a thick cover of heather and rushes in other areas hampered the identification of archaeological features.

---

<sup>10</sup> Highland HER 2012



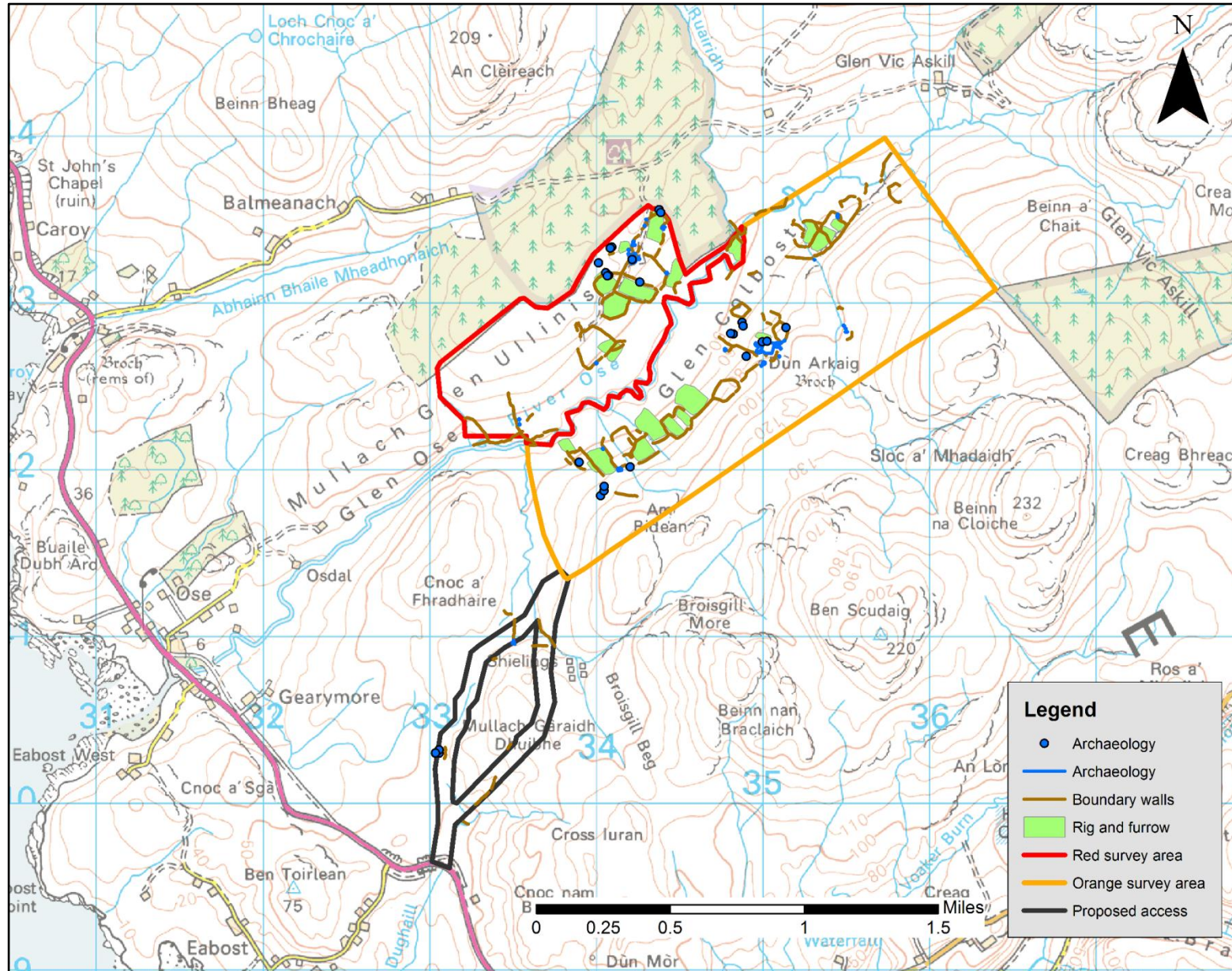
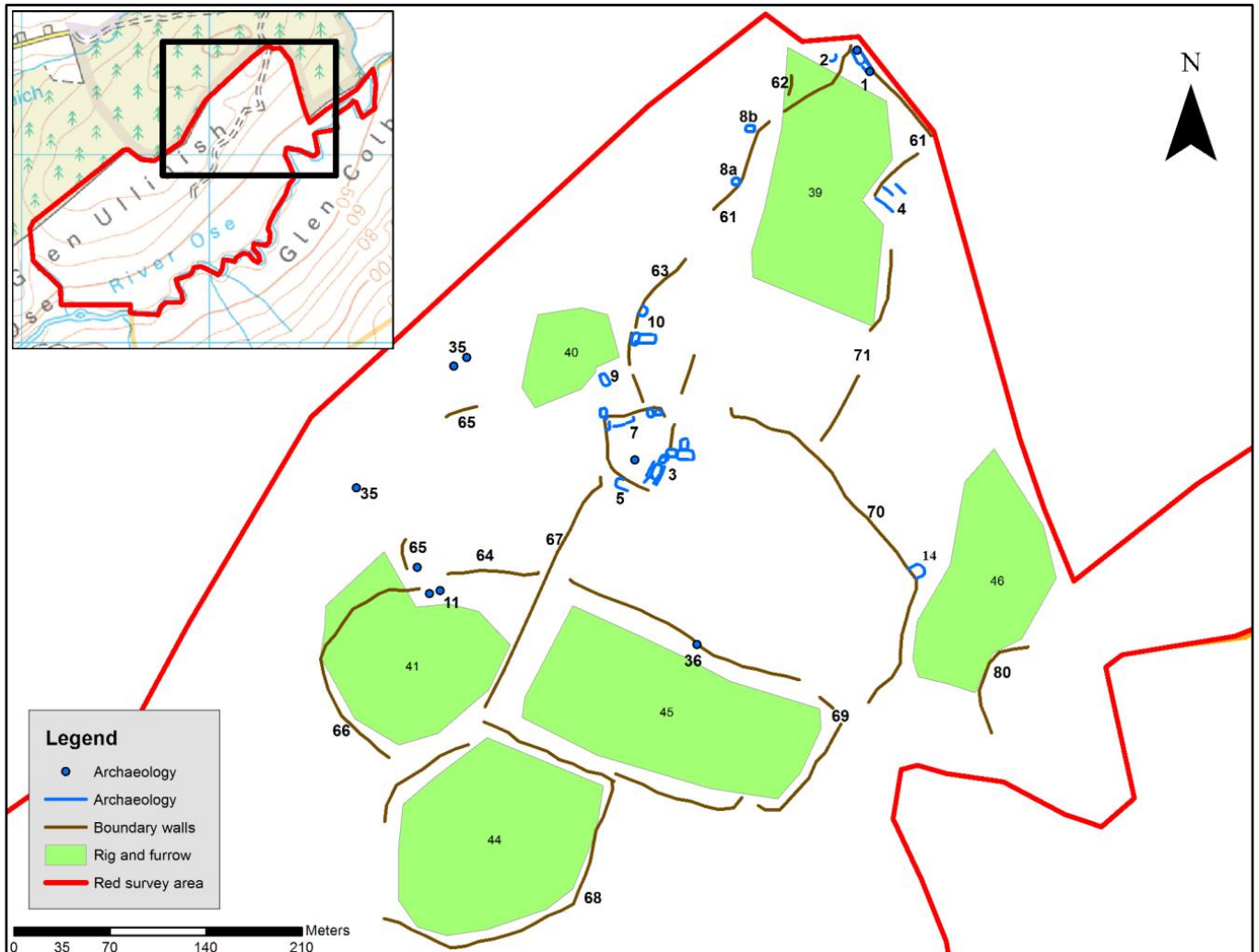


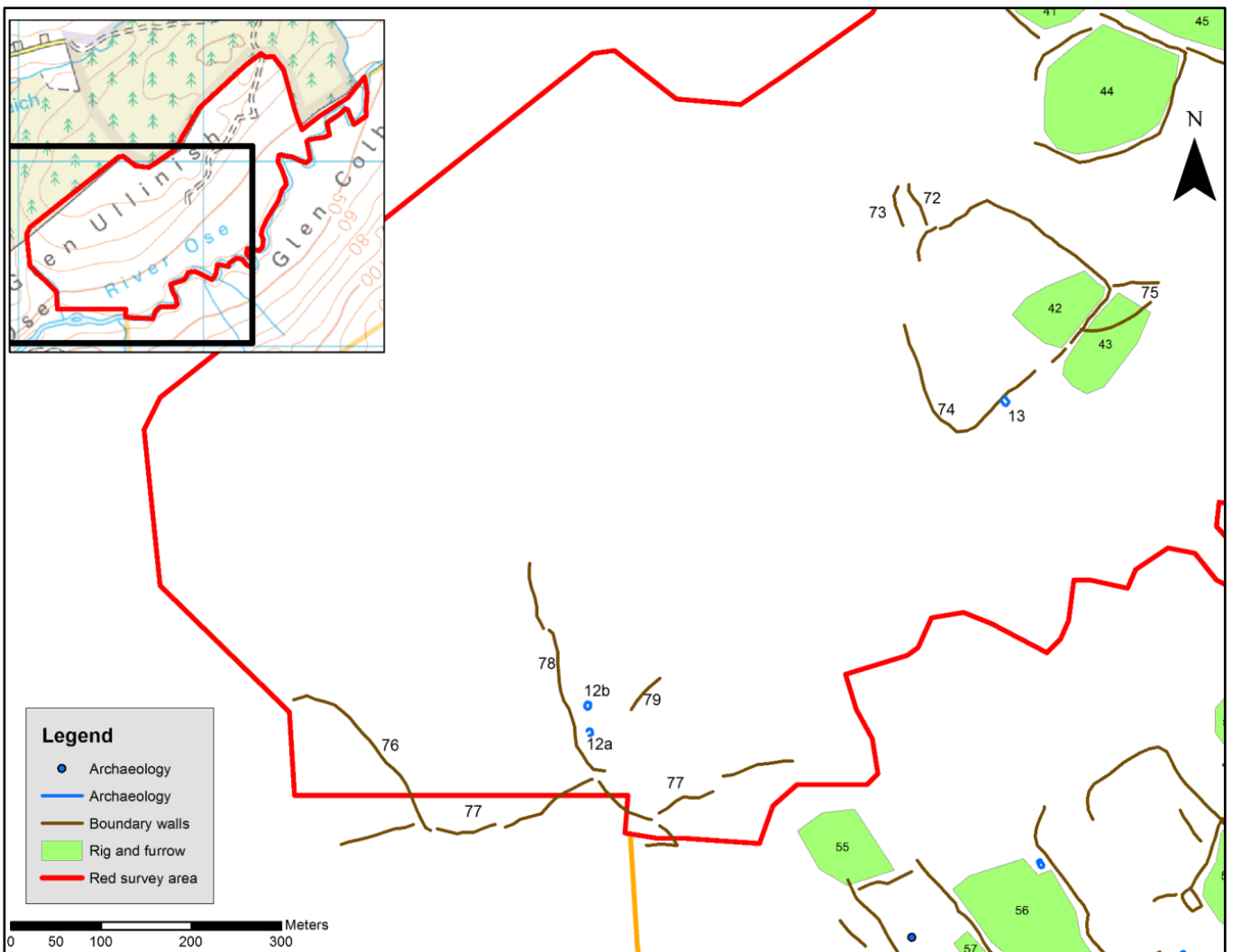
Figure 2: Location of the archaeological features recorded.

### 5.2.2 Red Area

5.2.2.1 There is a concentration of Post-Medieval structures in the northern corner of the **Red Area** (Figures 3 and 4). Associated with the various structures is a patchwork of rig and furrow field systems, the majority of which are surrounded by stone and turf boundary dykes (Figures 3 and 4). These attest to the past cultivation of what is the most fertile part of the **Red Area**. The ground on the upper slopes of the **Red Area** and towards its south-western reaches is much boggier and heather-covered. Here there is substantial evidence of peat cutting.



**Figure 3:** Location of the archaeological features in the northern half of the Red Area



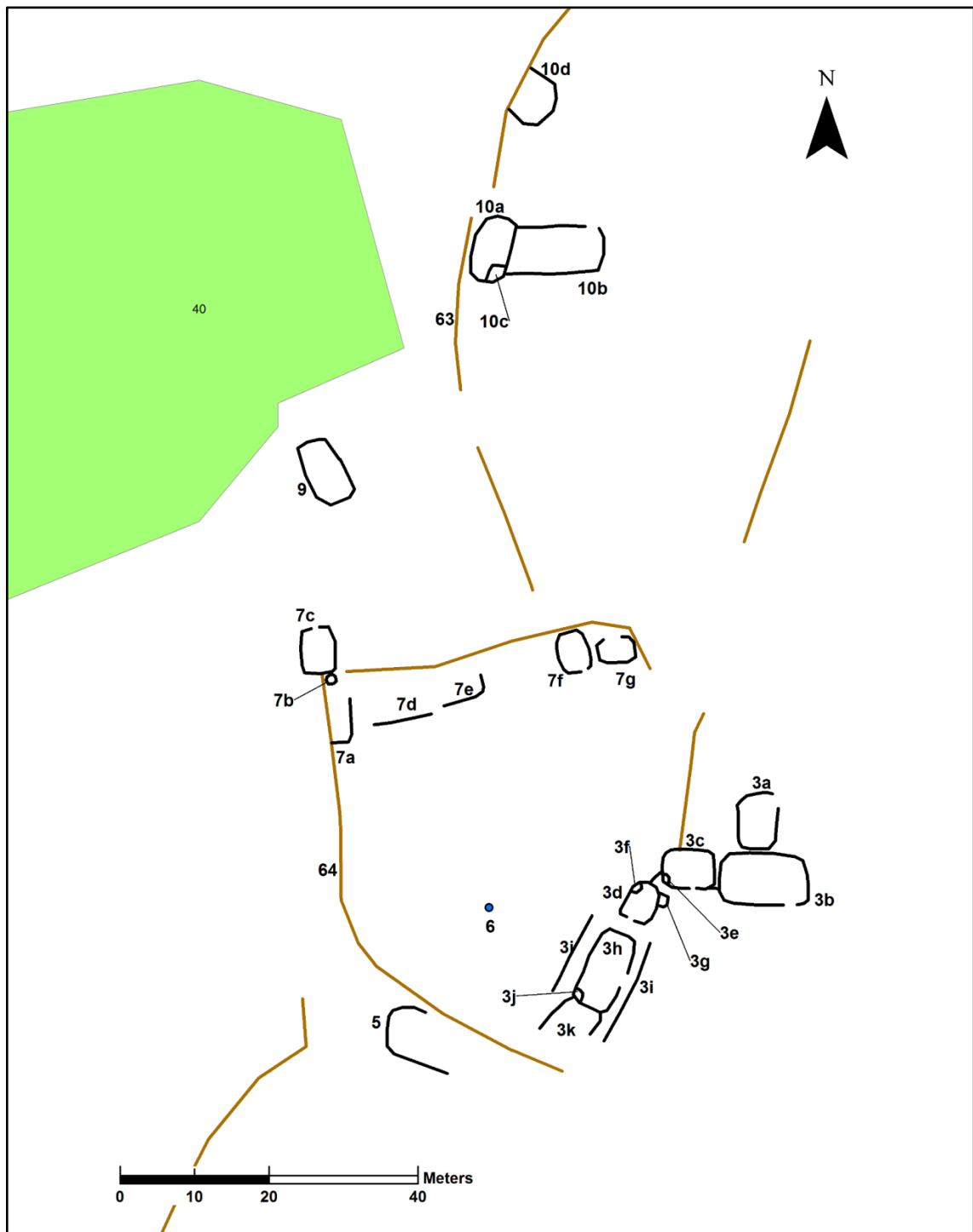
**Figure 4:** Location of the archaeological features in the southern half of the Red Area

The most sizeable collection of structures is the settlement of Glen Ullinish (site 3; Figure 5; Plate 1). This settlement is depicted on the 2<sup>nd</sup> edition OS 6-inch map and can be assumed to have come into existence sometime between 1877, when the survey was conducted for the first edition OS 6-inch map, and 1901, when a second survey was carried out. Six stone structures were recorded here and it was evident that three were of a much earlier date than the others, being in a degraded condition. It is possible that these buildings had fallen out of use and become degraded prior to the 1877 OS survey and were therefore not recorded. Following their ruination, the three later structures have been used for stock purposes with twinning pens constructed in building corners.

To the north-northwest of this settlement are a small group of much degraded, scattered structures (sites 7 (Plate 1), 9 (Plate 3) and 10; Figure 5), which appear to pre-date the Glen Ullinish buildings. Again, the fact that they do not appear on the 1<sup>st</sup> edition OS 6-inch map, and their condition, would seem to suggest that they had gone out of use well before 1877.

In the northern corner of the **Red Area** is a large, ruinous house or barn built against a pre-existing wall, which has been used for sheep management in later times (site 1; Figure 3; Plate 4). This structure is not shown on the 1<sup>st</sup> or 2<sup>nd</sup> edition OS 6-inch maps, but is most likely to

pre-date 1877. Two further degraded stone structures (site 8; Figure 3) of unknown use and date are located to the southwest of site 1.



**Figure 5:** Detail of sites 3, 7, 9 and 10.



**Plate 1:** Site 7 in foreground; site 3 in background.



**Plate 2:** Site 3h with later twinning pen in the corner.



**Plate 3:** Site 9



**Plate 4:** Site 1 with later twinning pens in two corners

### 5.2.3 Orange Area

5.2.3.1 As in the **Red Area**, the most fertile land in the **Orange Area** is situated along the lower reaches of the River Ose valley side. It is here that the majority of the Post-Medieval structures recorded are situated, together with a series of areas of rig and furrow cultivation and associated boundary walls (Figures 6 and 7). On the upper reaches of the valley side significant evidence of peat cutting was again noted. Evidence was also found on the upper slopes for the practice of transhumance: a small group of much degraded shielings (site **29a-d**) was recorded next to one of the many streams that flow into the River Ose.

Situated at the south-western end of the **Orange Area** is the small settlement of *Glenostle* (Figure 8). It appears on both the 1<sup>st</sup> and 2<sup>nd</sup> editions of the OS 6-inch map and was, therefore, in existence prior to 1877. Four houses and a byre were recorded, along with an associated kaleyard; the buildings have later twinning pens added (site **18a-i**). To the northwest is a single degraded structure (site **33**; Figure 8), which is not shown on the historical mapping.

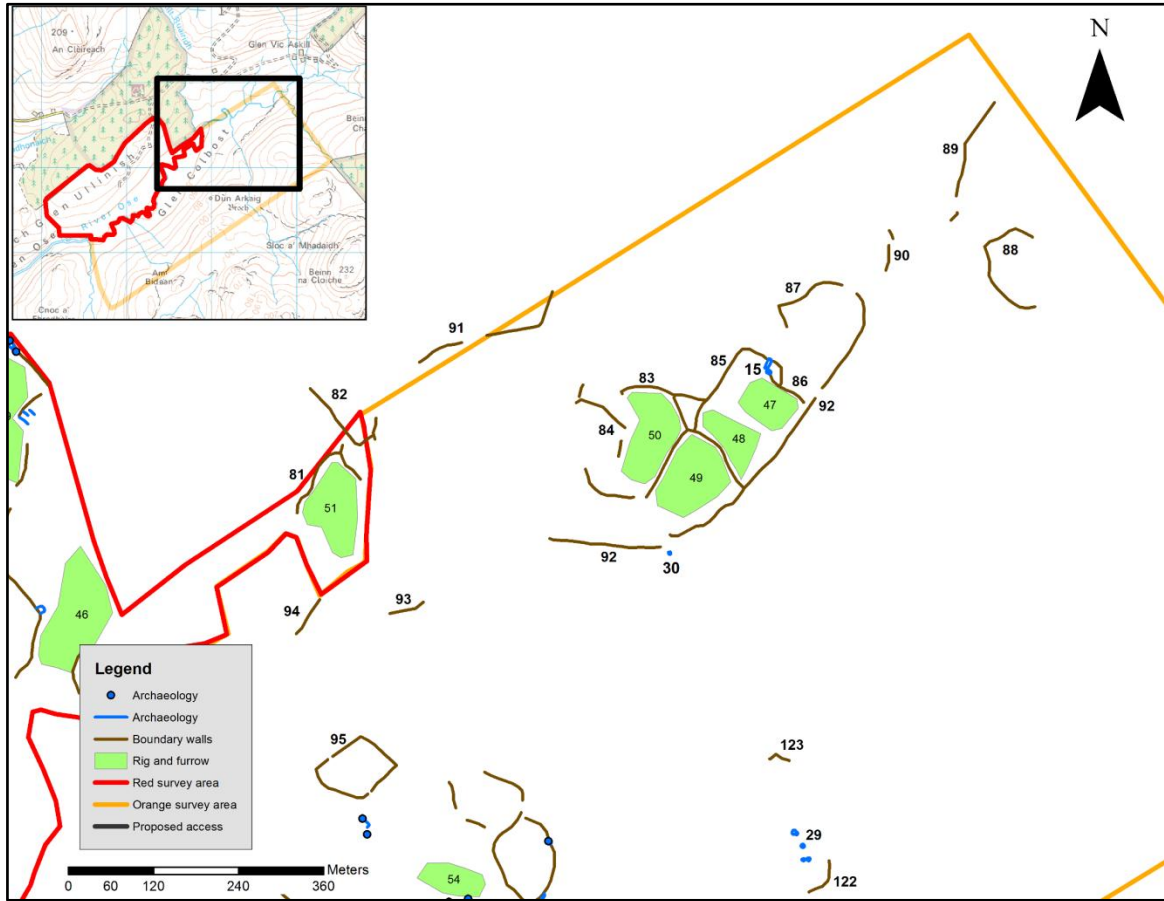


Figure 6: Location of the archaeological features in the north-eastern portion of the Orange Area

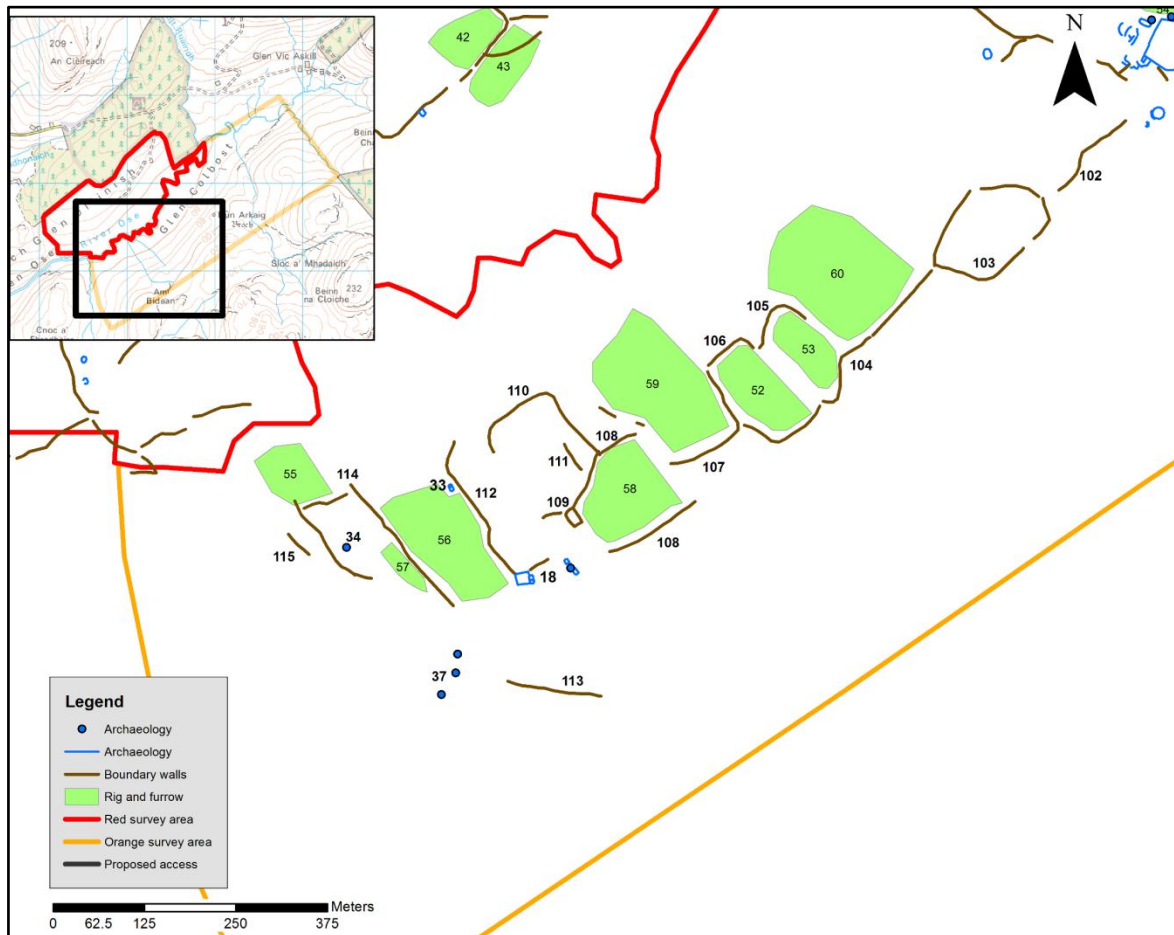
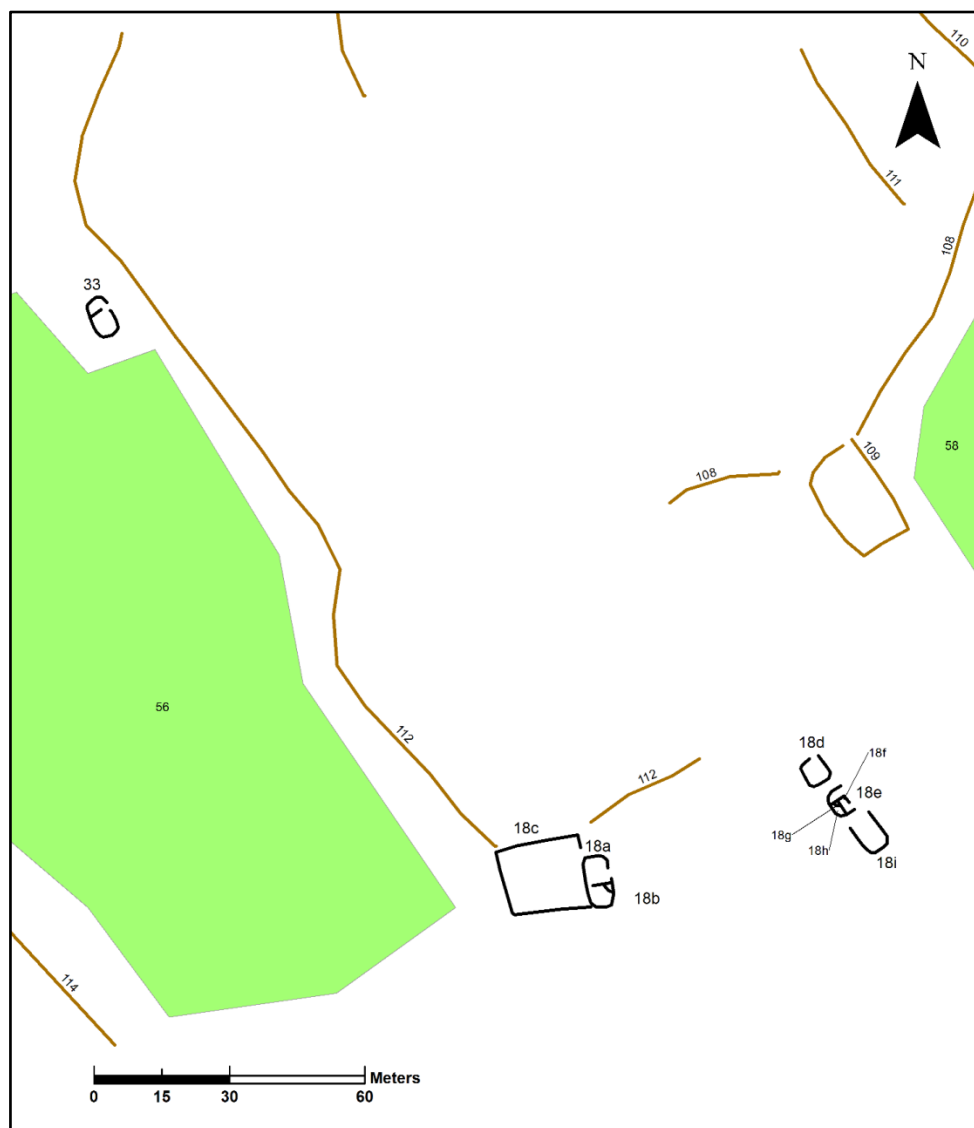


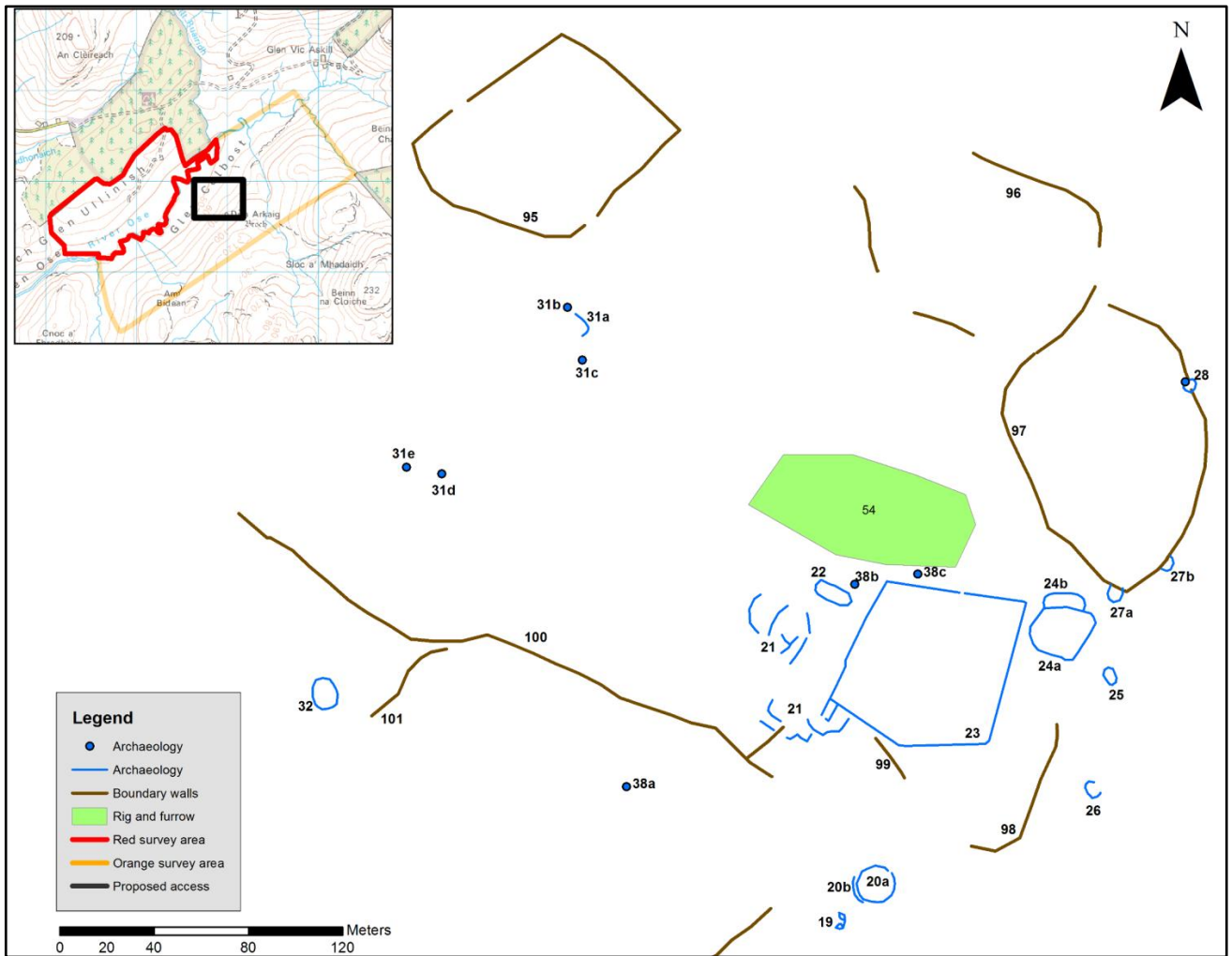
Figure 7: Location of the archaeological features in the south-western portion of the Orange Area



**Figure 8:** Detail of sites 18 and 33.

A series of areas of rig and furrow cultivation and boundary walls run in a north-easterly direction from *Glenostle* to *Dun Arkaig*, where there is another concentration of Post-Medieval structures and *Dun Arkaig* broch (Figure 9). The broch (site 20; Plate 5), dating to the Iron Age, sits on top of a rocky knoll with commanding views over the valley. It is in a degraded condition with a blocked entrance visible in the north-east wall and an intra-mural gallery partially visible in the south-east quadrant. A later shieling, and twinning pens within it, has been built against a rock face on the southern slope of the knoll (site 19).

Below the broch is a large sheepfold (site 23; Plate 6), most probably built from stone robbed from the broch. Surrounding the sheepfold are the much degraded remains of buildings (sites 21, 22, 24-27); these are most likely associated with the rig and furrow and enclosures in the vicinity. Faint traces of rig and furrow were also detected within the sheepfold. To the north-west is another group of much degraded remains (site 31), which may be an early farmstead. Certainly, small clearance cairns in this area would suggest some form of cultivation was taking place.



**Figure 9:** Detail of Dun Arkaig broch and the Post-Medieval structures in the vicinity thereof



**Plate 5:** Dun Arkaig Broch

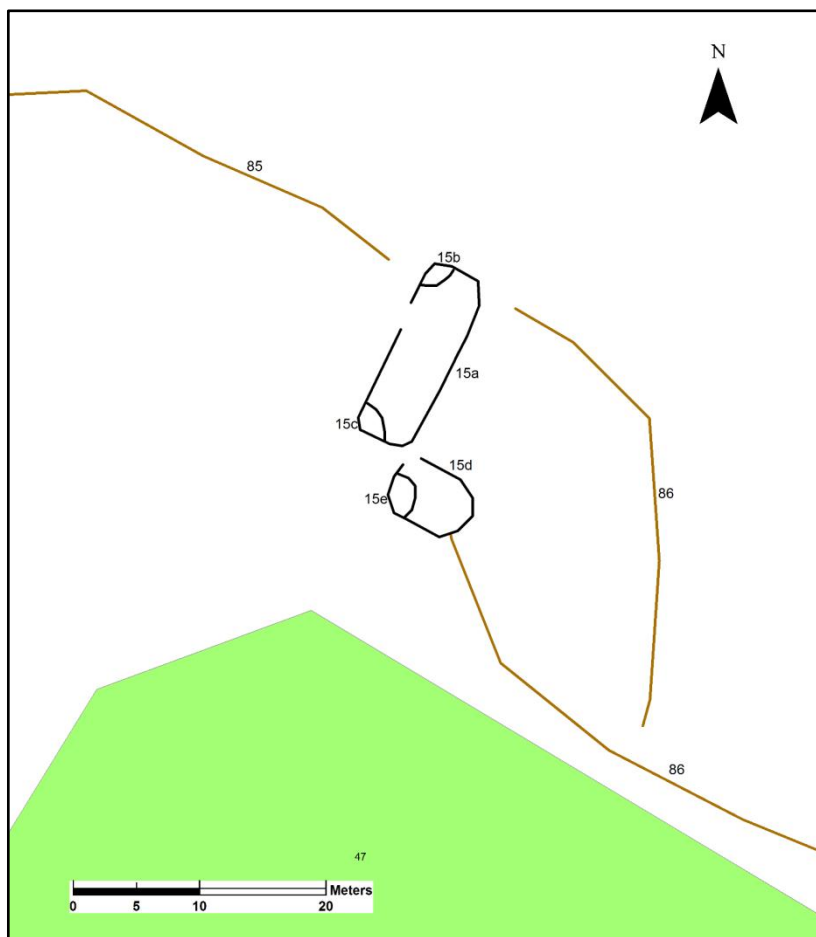


**Plate 6:** Dun Arkaig sheepfold



The final small settlement concentration within the **Orange Area** is situated in the north-eastern corner of the survey area (Figure 6). A house and byre (site **15**; Figure 10) were recorded together with boundary walls and areas of rig and furrow cultivation. These structures are not depicted on the OS 6-inch maps and it may be that they post-date 1901. Both structures have later twinning pens inserted in the corners.

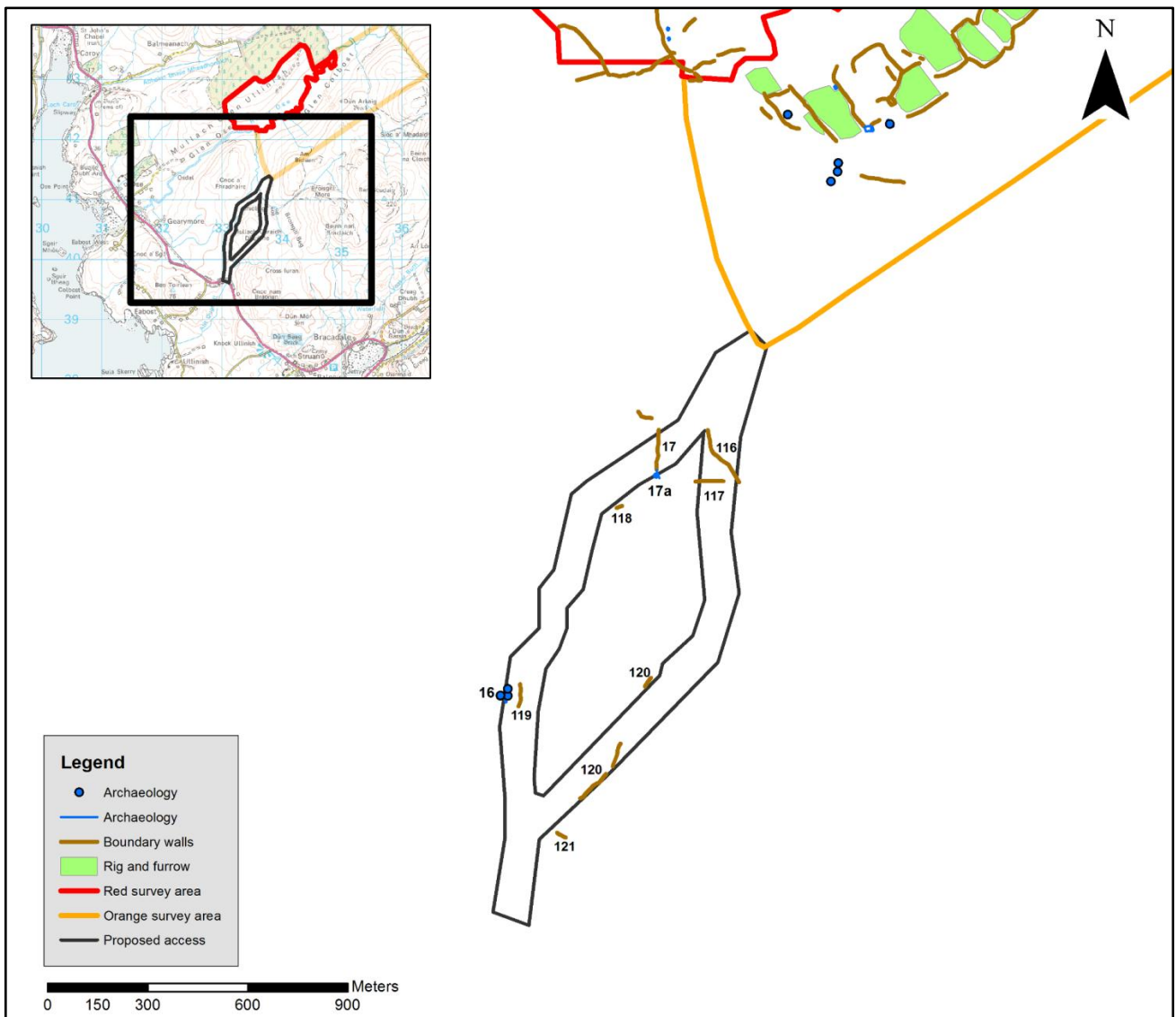
To the south-east of the rig and furrow associated with site **15** is site **30** (Figure 6), a small stone structure lying approximately 2m to the west of a stream. Due to its size and proximity to water it has been interpreted as an illicit whisky still.



**Figure 10:** Detail of site 15

#### 5.2.4 Access Tracks

Two proposed access routes were surveyed (Figure 11) and for ease of reference will be referred to as the North-west Track and South-east Track. No sites of interest in these areas were noted during the desk-based assessment, but archaeological features were noted on both routes.

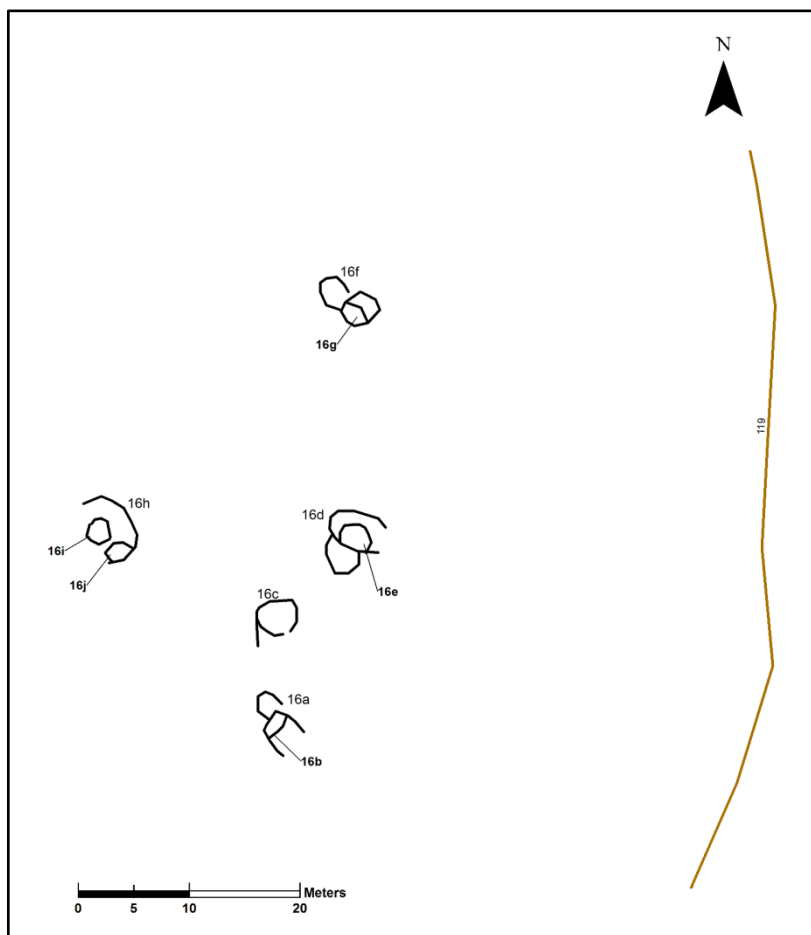


**Figure 11:** Archaeological sites recorded along the North-west and South-east access tracks

#### 5.2.4.1 North-west Access Track

Two groups of archaeological features were recorded within the proposed North-west Access Track. Site 16 (Figure 12) is a cluster of five Post-Medieval shielings, some double celled, situated on small mounds within an, otherwise, boggy landscape. All were much degraded and covered in rushes. The ground cover in this area made identifying the sites difficult and it is possible there are further much degraded remains in the vicinity. The shielings had later twinning pens inserted. Part of a boundary wall was identified close by (site 119).

Site 17a is the much degraded remains of what was possibly a stone structure; there was a possible entrance visible on the east side. The stone from this structure was likely robbed to build a portion of wall (site 17c); the stone work only extends for a short distance before becoming a much degraded turf dyke. A later twinning pen (site 17b) is attached to the wall.



**Figure 12:** Detail of site 16

#### 5.2.4.2 South-east Access Track

The archaeological features recorded within the proposed South-east Access Track were all boundary walls. At the northern end of the track sites **116**, a stone and turf dyke, and **117**, a turf dyke, were recorded. It is likely that they were joined at one time and, indeed, were probably linked to site **17** (stone wall).

Site **120** presented itself as sections of an alignment of upright boulders mostly consumed by peat, typical of a Bronze Age sub-peat dyke. It is possible that this dyke runs as a continuous feature below the peat.

Site **121** is a stone and turf dyke lying to the east of the proposed route.

## 6. Discussion

6.1 The walkover survey recorded 187 archaeological sites within the survey areas. Overall, the landscape is dominated by Post-Medieval remains including structures and associated boundary dykes, enclosures and rig and furrow cultivation.

6.2 Skye's rich prehistory is represented by *Dun Arkaig Broch* and the Bronze Age sub-peat dyke. It was, perhaps, surprising not to find any further evidence of prehistoric activity in the vicinity

of the broch, but it is quite possible that any traces were destroyed by the later Post-Medieval building and cultivation activities in that area.

- 6.3 The number and condition of the various structures within the survey areas suggest that this part of the Ose valley had been occupied over a lengthy period. Livestock was grazed and moved up to higher pastures as evidenced by the presence of shielings; ground was reclaimed and cultivated along the banks of the river and on the lower slopes of the valley sides; peat was cut for fuel and even, perhaps, whisky was distilled.

## **7. Recommendations**

- 7.1 At least a 20m buffer zone should be maintained around *Dun Arkaig Broch* (Figure 13).
- 7.2 At least a 10m buffer zone should be maintained around all built structures (Figures 13 and 14). Any structures in the vicinity of ground-breaking work should be marked off at least two weeks prior to work commencing.
- 7.3 At least a 5m buffer zone should be maintained around all boundary and enclosure dykes (Figures 13 and 14). In the event that it is necessary to break through any boundary or enclosure wall for construction or access purposes, an archaeologist should be present to watch such works and record the profile of such boundary or enclosure wall. A watching brief is recommended for each boundary or enclosure wall that requires to be compromised until such time as the archaeologist is satisfied that a representative sample has been achieved.
- 7.4 All works associated with the construction of the proposed wind farm should have regard to the above recommendations including, but not restricted to, turbine bases, crane pads, access roads, borrow pits, fencing and siting of offices.

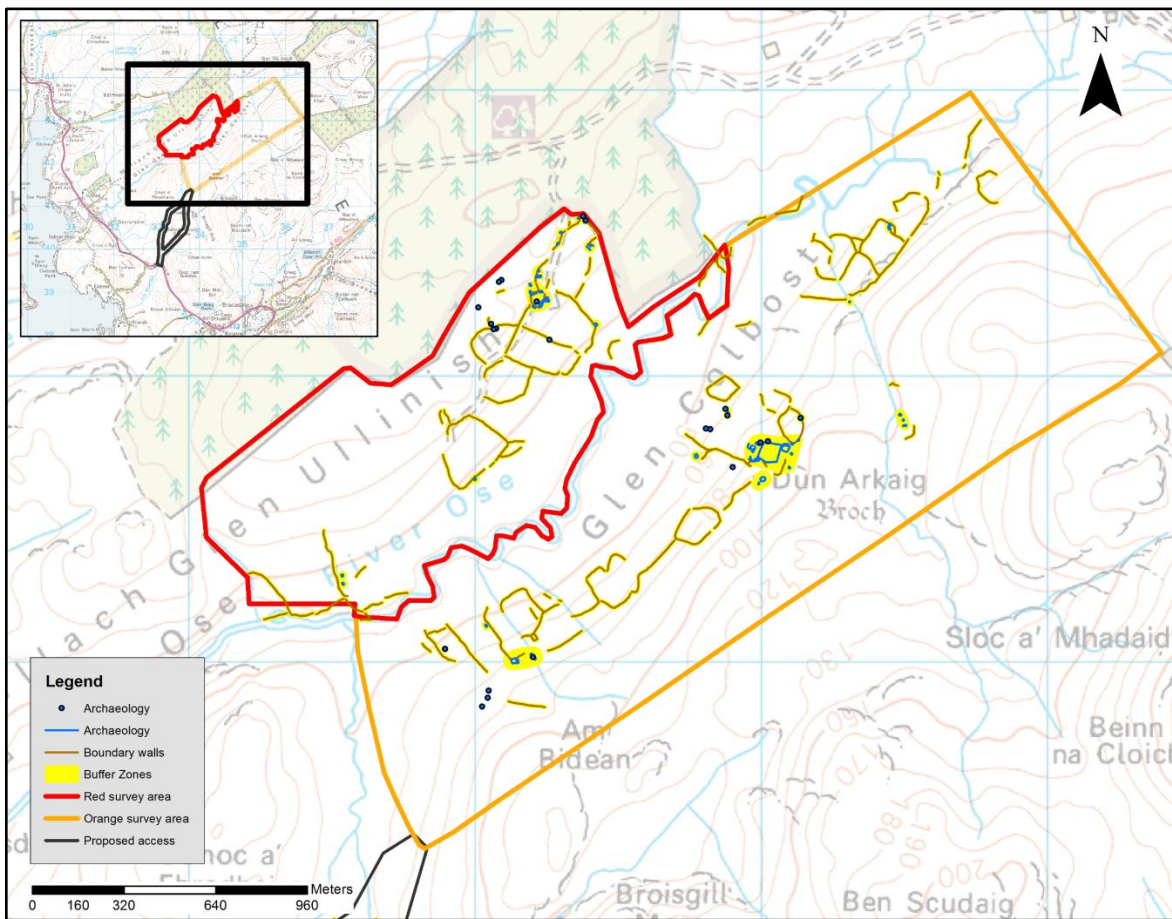


Figure 13: Settlement, boundary walls and broch locations showing buffer zones

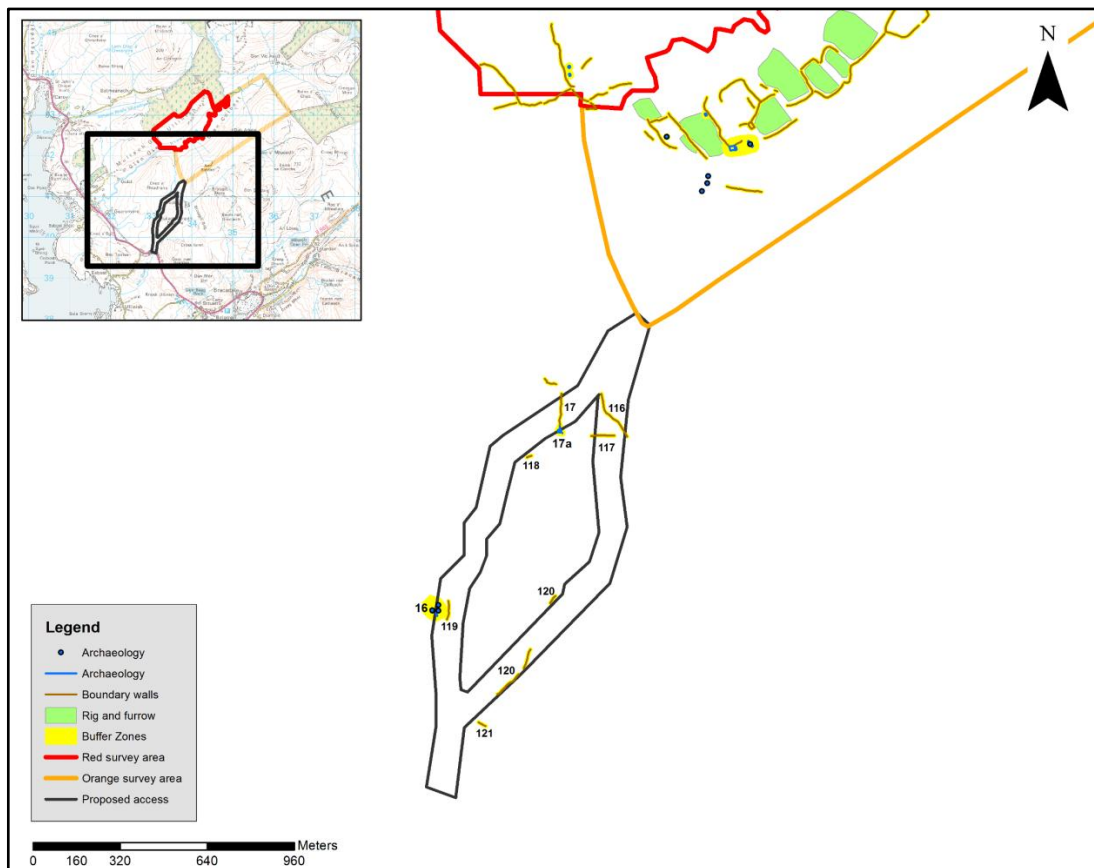


Figure 14: Structure and boundary wall locations showing buffer zones

## 8. References

British Geological Survey 2010 accessed 14 May 2012 at [Http://bgs.ac.uk](http://bgs.ac.uk)

Highland Council Historic Environment Team (HET) 2011. *Development Guidance: Archaeology*, v 1.3. Accessed at:  
[Http://her.highland.gov.uk/hbsmrgatewayhighland/DataFiles/NewReports/DevelopmentGuidance\\_v1.3.pdf](http://her.highland.gov.uk/hbsmrgatewayhighland/DataFiles/NewReports/DevelopmentGuidance_v1.3.pdf)

Highland Historic Environment Record (HER) 2012. Accessed 3 May 2012 at  
<http://her.highland.gov.uk>

Institute for Archaeologists, 2008. *Standards and guidance for archaeological desk-based assessment*. Reading: IfA.

Institute for Archaeologists, 2009. *By-laws of the Institute for Archaeologists: Code of Conduct*: Reading, IfA.

NLS 2012. National Library of Scotland. Accessed 14 May 2012 at <http://maps.nls.uk/>

NSA. New Statistical Account, Account of 1834-45 vol.14 pp.296-297: Bracadale, County of Inverness accessed 14 May 2012 at <http://stat-acc-scot.edina.ac.uk/link/1834-45/Inverness/Bracadale/>

Royal Commission on the Ancient and Historical Monuments of Scotland, 2004. *Corporate Plan 2004-9: Annex - Survey and Recording Policy* accessed 19 March 2012 at  
[http://www.rcahms.gov.uk/rcahms\\_media/files/foi/survey\\_and\\_recording\\_policy.pdf](http://www.rcahms.gov.uk/rcahms_media/files/foi/survey_and_recording_policy.pdf)

The Scottish Government 2010. *Scottish Planning Policy* accessed 19 March 2012 at  
<Http://www.scotland.gov.uk/Resource/Doc/300760/0093908.pdf>

**CARTOGRAPHIC REFERENCES** accessed at <http://www.nls.uk/maps/>

Ordnance Survey 1881 *1<sup>st</sup> Edition 6-inch to the mile: Inverness-shire (Isle of Skye), Sheet XXVIII, surveyed 1877.*

Ordnance Survey 1903 *2<sup>nd</sup> Edition 6-inch to the mile: Inverness-shire Isle of Skye, Sheet XXVIII, revised 1901.*

Thomson, John 1832 *Atlas of Scotland: Skye Island &c.*

**APPENDIX 1      Glen Ullinish Gazetteer of Archaeological Sites**

No.	Site Name	Site Type	Description	Align-ment	Condition	Period	Height OD (m)	Easting (centre)	Northing (centre)	Photo No.	HHER No.
<b>1a</b>	Glen Ullinish	House / byre	A butting an earlier turf/stone wall is a moss-covered subrectangular house measuring 12m by 5m and an attached byre measuring 6m by 4.5m. Turf/stone walls spread to 1.5-2m wide, standing up to 0.75m high; a filled-in entrance is in the S end of W wall.	NW-SE	Degraded	Post Medieval	80	10	134379	843560	1-4
<b>1b</b>	Glen Ullinish	Twinning pen	A later stone-built twinning pen measuring 1m across internally is located in the N corner of house Site 1a.	N/A	Degraded	Post Medieval	80	5	134381	843559	2
<b>1c</b>	Glen Ullinish	Twinning pen	A later stone-built twinning pen measuring 0.7m by 0.5m internally is located in the S corner of house Site 1a.	N/A	Degraded	Post Medieval	80	5	134390	843544	2-4
<b>2</b>	Glen Ullinish	Quarry	A disused turf-covered possible quarry has been dug into a hillside on an E-facing slope. There is a 0.8m wide and 0.5m high bank enclosing the front of the quarry which may have been used as a later enclosure.	-	Degraded	Post Medieval	80	5	134365	843553	5

GUL12 – Glen Ullinish, Skye: Archaeological Walkover Survey

No.	Site Name	Site Type	Description	Align-ment	Condition	Period	Height OD (m)	Easting (centre)	Northing (centre)	Photo No.	HER No.
3a	Glen Ullinish	House/ bothy	A moss-covered subrectangular drystone house measuring 6m N-S by 5m with walls spread to 1-1.5m wide, standing up to 0.5m high; there is a possible entrance in the NE corner and rushes fill the interior and surround the exterior.	N-S	Degraded	Post Medieval	65	10	134252	843270	7
3b	Glen Ullinish	House	A moss-covered subrectangular drystone house measuring 11m E-W by 5m internally with walls spread to 1.2-2m wide, standing up to 0.75m high; there is no visible wall on W side and a possible entrance in the SE end of the S wall.	E-W	Degraded-very degraded	Post Medieval	65	10	134252	843268	-
3c	Glen Ullinish	House or byre	A subrectangular drystone house or byre measuring 7m E-W by 5m internally with walls 0.8m wide, standing up to 1.1m high; there is an entrance in S wall 0.8m wide and a twinning pen in the SW corner.	E-W	Degraded	Post Medieval	65	10	134245	843269	11



GUL12 – Glen Ullinish, Skye: Archaeological Walkover Survey

No.	Site Name	Site Type	Description	Align-ment	Condition	Period	Height OD (m)	Easting (centre)	Northing (centre)	Photo No.	HHER No.
3d	Glen Ullinish	House	A subrectangular drystone house with square internal corners measures 5.5m NE-SW by 4m internally with walls 0.75m wide and stands 0.25-1.25m high; there is an entrance in S wall 0.8m wide and a twinning pen in the NW corner.	NE-SW	Degraded	Post Medieval	65	10	134241	843264	9-11
3e	Glen Ullinish	Twinning pen	A later stone-built twinning pen is located in the SW corner of Site 3c. It measures 1m N-S by 0.7m and stands up to 0.5m high.	N-S	Ruinous	Post Medieval	65	5	134243	843265	-
3f	Glen Ullinish	Twinning pen	A later stone-built twinning pen is located in the NW corner of Site 3d. It measures 1m across and stands up to 0.5m high.	-	Degraded	Post Medieval	65	5	134239	843263	-
3g	Glen Ullinish	Twinning pen	A later stone-built structure measuring 2m across is attached to the E side of Site 3d. It is probably a later twinning pen.	-	Degraded	Post Medieval	65	5	134243	843262	-

GUL12 – Glen Ullinish, Skye: Archaeological Walkover Survey

No.	Site Name	Site Type	Description	Align-ment	Condition	Period	Height OD (m)	Easting (centre)	Northing (centre)	Photo No.	HHER No.
3h	Glen Ullinish	House	A subrectangular drystone house with square internal corners measures 11m NNE-SSW by 5m over walls 0.75m wide and stands up to 1.75m high; 0.8m wide entrance in the E wall; there is a fireplace in SW wall and a twinning pen in the SW corner.	NNE-SSW	Degraded	Post Medieval	65	10	134232	843253	8-11
3i	Glen Ullinish	Earlier structure	The remains of a turf- and moss-covered footing of an earlier structure underlies and extends beyond house Site 3h. It was too degraded to identify the type.	NNE-SSW	Very degraded	Post Medieval	65	10	134230	843255	-
3j	Glen Ullinish	Twinning pen	A later stone-built twinning pen is located in the SW corner of Site 3h. It measures 0.9m across and stands up to 0.5m high.	-	Degraded	Post Medieval	65	5	134231	843249	8
3k	Glen Ullinish	Structure	A very degraded stone/turf structure measures approximately 7m NE-SW by 4.5m with walls approximately 0.75m wide and standing up to 0.2m high. It partially underlies Site 3h and may be contemporary with Site 3i.	NE-SW	Very degraded	Post Medieval	65	10	134227	843247	-

GUL12 – Glen Ullinish, Skye: Archaeological Walkover Survey

No.	Site Name	Site Type	Description	Align-ment	Condition	Period	Height OD (m)	Easting (centre)	Northing (centre)	Photo No.	HER No.
4	Glen Ullinish	Remains of structure	Three alignments of a single course of stonework were located in open pasture under grass and may be the remains of one or more structures that have been almost completely robbed out.	NW-SE	Very degraded	Unknown	70	10	134412	843459	6
5	Glen Ullinish	Quarry	A disused quarry which was probably dug for later road construction. A bank of material to the N side overlies the earlier boundary wall located on the S side of settlement Site 3.	NW-SE	Ruinous	Post Medieval	65	5	134205	843242	10
6	Glen Ullinish	Stone setting	A circular setting of stones measuring 0.6m across may be a hearth.	-	Degraded	Post Medieval	65	5	134219	843261	12
7a	Glen Ullinish	Structure	A very degraded moss-covered stone/turf structure with rounded corners measures 9m N-S by 5m with walls spread to 2m and up to 0.3m high. There is no visible entrance. A later stone wall overlies the W wall of it.	N-S	Very degraded	Post Medieval	70	10	134200	843285	-

GUL12 – Glen Ullinish, Skye: Archaeological Walkover Survey

No.	Site Name	Site Type	Description	Align-ment	Condition	Period	Height OD (m)	Easting (centre)	Northing (centre)	Photo No.	HER No.
7b	Glen Ullinish	Twinning pen	A later stone-built twinning pen is located in the NW corner of a stone-built enclosure encompassing Site 7 and Site 3. It measures 0.7m across and stands up to 0.6m high.	-	Degraded	Post Medieval	70	5	134197	843292	13-14
7c	Glen Ullinish	House or byre	A grass-covered stone/turf house or byre measures 7m N-S by 4m over walls spread to 1.5m and up to 0.5m high. There is a possible entrance in the N wall and a later stone wall overlies its S wall.	N-S	Very degraded	Post Medieval	70	10	134198	843295	13-14
7d	Glen Ullinish	Structure	The remains of a grass-covered stone/turf structure were difficult to discern. It measures approximately 8m E-W by 5m over walls spread to 0.7m and up to 0.2m high. There is no visible entrance and it is overlain by a later stone wall on its N side.	E-W	Very degraded	Post Medieval	70	10	134207	843286	-

GUL12 – Glen Ullinish, Skye: Archaeological Walkover Survey

No.	Site Name	Site Type	Description	Align-ment	Condition	Period	Height OD (m)	Easting (centre)	Northing (centre)	Photo No.	HER No.
7e	Glen Ullinish	Structure	The remains of a grass-covered stone/turf structure measure approximately 5m E-W by 4m over walls spread to 1.5m and up to 0.6m high. There is no visible entrance and it is overlain by a later stone wall on its N side.	E-W	Very degraded	Post Medieval	70	10	134216	843289	-
7f	Glen Ullinish	House/ byre	A grass-covered stone/turf house or byre measures 8m N-S by 5m over walls spread to 2m and up to 0.8m high. There is a possible entrance in the E wall. The stone-built enclosure wall to N postdates the structures.	N-S	Very degraded	Post Medieval	70	10	134229	843297	15
7g	Glen Ullinish	Byre	A grass-covered stone/turf possible byre measures 6m E-W by 5m over walls spread to 1m and up to 0.5m high. It is attached to house Site 7f. The stone-built enclosure wall to N and E postdates the structures.	E-W	Very degraded	Post Medieval	70	10	134236	843294	-

GUL12 – Glen Ullinish, Skye: Archaeological Walkover Survey

No.	Site Name	Site Type	Description	Align-ment	Condition	Period	Height OD (m)	Easting (centre)
8a	Glen Ullinish	Shieling	A moss- and grass-covered stone-built shieling or bothy is located at the base of a rock outcrop. It measures 6m E-W by 4m over walls 0.5m wide and stands up to 0.7m high. There is an entrance in the N wall 0.5m wide.	E-W	Degraded	Post Medieval	80	10
8b	Glen Ullinish	Shieling	A moss- and grass-covered stone-built shieling or bothy is located at the base of a rock outcrop and built into boulders. It measures 4m E-W by 3.5m over walls 0.5m wide and stands up to 0.7m high. There was no visible entrance.	E-W	Degraded	Post Medieval	80	10
9	Glen Ullinish	House or byre	A grass-covered stone/turf house or byre measures 7m NW-SE by 6m over walls spread to 2m and up to 0.7m high. The structure, built on top of an outcrop, has rounded corners and no visible entrance.	NW-SE	Degraded	Post Medieval	75	10
10a	Glen Ullinish	Byre	A grass-covered stone/turf probable byre measures 10m NNE-SSW by 4m over walls spread to 1m and up to 0.8m high. The structure has rounded corners and a possible entrance in the NW corner 0.5m wide. There is a later twinning pen in the SE corner.	NNE-SSW	Degraded	Post Medieval	80	10

GUL12 – Glen Ullinish, Skye: Archaeological Walkover Survey

No.	Site Name	Site Type	Description	Align-ment	Condition	Period	Height OD (m)	Easting (centre)
10b	Glen Ullinish	House	A grass-covered stone/turf subrectangular house measures 13m E-W by 6m over walls spread to 1.5m and up to 0.75m high. There is an entrance in the NE corner 0.5m wide and other possible filled-in entrance in S wall. It abuts Site 10a.	E-W	Degraded	Post Medieval	80	10
10c	Glen Ullinish	Twinning pen	A later stone-built twinning pen is located in the SE corner of Site 10a. It measures 0.7m across and stands up to 0.5m high.	-	Ruinous	Post Medieval	80	5
10d	Glen Ullinish	Byre or pen	A grass-covered subrectangular stone/turf pen or byre under dense rushes is attached to a stone/turf boundary wall. It measures 6m NE-SW by 4m over walls spread to 1m and up to 0.3m high. There is no visible entrance.	NE-SW	Degraded	Post Medieval	80	10
11a	Glen Ullinish	Clearance cairn	Amorphous cairn of stone measuring 4m across is located on top of an outcrop	-	Degraded	Post Medieval	85	5
11b	Glen Ullinish	Clearance cairn	Amorphous cairn of stone measuring 4m long and 0.4m high is located to the S side of an outcrop	-	Degraded	Post Medieval	85	5
11c	Glen Ullinish	Clearance cairn	Amorphous cairn of stone measuring 4m long and 0.4m high is located to the S side of an outcrop	-	Degraded	Post Medieval	85	5

GUL12 – Glen Ullinish, Skye: Archaeological Walkover Survey

No.	Site Name	Site Type	Description	Align-ment	Condition	Period	Height OD (m)	Easting (centre)
12a	Glenostle	Shieling	Built into the E side of a rock outcrop is a stone/turf shieling or boulder shelter measuring 3m N-S by 2.5m over walls spread to 1.5m and up to 0.4m high. There is an entrance on the E side.	N-S	Degraded	Post Medieval	45	10
12b	Glenostle	Possible shieling	A circular grass-covered mound measuring 4m across may be a very degraded shieling site.	-	Very degraded	Post Medieval	50	10
13	Glen Ullinish	Pen	A grass-covered stone/turf subrectangular pen is attached to a stone/turf boundary wall. It measures 8m NW-SE by 5m over walls spread to 1m and up to 0.3m high.	NW-SE	Degraded	Post Medieval	50	5
14	Glen Ullinish	Pen	A grass-covered stone/turf D-shaped mound is attached to a stone/turf boundary wall above a ditch or stream. It measures 8m across over walls spread to 1m and up to 0.6m high and probably formed a pen.	NW-SE	Very degraded	Post Medieval	50	5
15a	Glen Colbost	House	A grass-covered drystone subrectangular house with rounded corners measures 12m NE-SW by 5m over walls 0.8m wide and up to 1m high. There is an entrance in the NW wall 1m wide and two later twinning pens within the interior.	NE-SW	Degraded	Post Medieval	65	10



GUL12 – Glen Ullinish, Skye: Archaeological Walkover Survey

No.	Site Name	Site Type	Description	Align-ment	Condition	Period	Height OD (m)	Easting (centre)
15b	Glen Colbost	Twinning pen	A later stone-built twinning pen is located in the N corner of Site 15a. It measures 0.75m by 0.5 and stands up to 0.4m high.	-	Ruinous	Post Medieval	65	5
15c	Glen Colbost	Twinning pen	A later stone-built twinning pen is located in the SW corner of Site 15a. It measures 0.5m across and stands up to 0.4m high.	-	Ruinous	Post Medieval	65	5
15d	Glen Colbost	Byre	A grass-covered drystone subrectangular byre with rounded corners measures 7m NW-SE by 4m over walls 1m wide and up to 1.5m high. There is an entrance in the N corner 1m wide and one later twinning pen within the interior.	NW-SE	Degraded	Post Medieval	65	10
15e	Glen Colbost	Twinning pen	A later stone-built twinning pen is located in the W corner of Site 15d. It measures 1m by 0.75m and stands up to 0.4m high.	-	Ruinous	Post Medieval	65	5
16a	Mullach Garaidh Dhuibhe	Shieling	Under rushes and grass is stone-turf subcircular double cell shieling. The SE cell measures 5m NW-SE by 4m over walls spread to 2m and up to 0.7m high. There is an entrance 1m wide in the S side. The N cell measures 2m across.	NW-SE	Degraded	Post Medieval	55	10

GUL12 – Glen Ullinish, Skye: Archaeological Walkover Survey

No.	Site Name	Site Type	Description	Align-ment	Condition	Period	Height OD (m)	Easting (centre)
16b	Mullach Garaidh Dhuibhe	Twinning pen	A later stone-built twinning pen is located in the N half of shieling Site 16a. It measures 2m NW-SE by 1m over walls 0.8m wide and up to 0.4m high.	NW-SE	Ruinous	Post Medieval	55	5
16c	Mullach Garaidh Dhuibhe	Shieling	Under rushes and grass is stone-turf subcircular double cell shieling measuring 5m across overall. The walls are spread to 1.2m wide and stand up to 0.3m high and the S cell is mostly degraded.	N-S	Very degraded	Post Medieval	55	10
16d	Mullach Garaidh Dhuibhe	Shieling	Under rushes and grass is stone-turf subcircular double cell shieling measuring 8m NE-SW by 6m overall. The walls spread to 2m and stand up to 0.7m high. It appears to be built over the mostly degraded remains of an earlier structure.	NE-SW	Degraded	Post Medieval	55	10
16e	Mullach Garaidh Dhuibhe	Twinning pen	A later stone-built twinning pen overlies an earlier shieling Site 16d. It measures 1.5m across internally.	-	Ruinous	Post Medieval	65	5
16f	Mullach Garaidh Dhuibhe	Shieling	Under rushes and grass is stone-turf subcircular double cell shieling measuring 8m NW-SE by 5m overall. The walls spread to 1.5m and stand up to 0.25m high.	NW-SE	Degraded	Post Medieval	55	10

GUL12 – Glen Ullinish, Skye: Archaeological Walkover Survey

No.	Site Name	Site Type	Description	Align-ment	Condition	Period	Height OD (m)	Easting (centre)
16g	Mullach Garaidh Dhuibhe	Twinning pen	A later stone-built twinning pen overlies an earlier shieling Site 16f. It measures 1.5m across internally.	-	Ruinous	Post Medieval	65	5
16h	Mullach Garaidh Dhuibhe	Shieling	Under rushes is stone-turf subcircular D-shaped shieling attached to a rock outcrop. It measures 5.5m NW-SE by 4m over walls spread to 1m and standing up to 0.5m high. Two later twinning pens were built within the shieling.	NW-SE	Degraded	Post Medieval	55	10
16i	Mullach Garaidh Dhuibhe	Twinning pen	A later stone-built twinning pen overlies an earlier shieling Site 16h. It measures 0.7m by 0.8m across internally.	-	Ruinous	Post Medieval	65	5
16j	Mullach Garaidh Dhuibhe	Twinning pen	A later stone-built twinning pen overlies an earlier shieling Site 16h. It measures 1.2m by 0.5m across internally.	-	Ruinous	Post Medieval	65	5
17a	Mullach Garaidh Dhuibhe	Structure	Under grass and rushes is a subcircular raised area w/ stones visible on the edges measuring 11m across: the remains of a robbed-out structure for building a portion of the boundary wall to the E. A dip on the E side may be the remains of the entrance.	NNW-SSE	Very degraded	Unknown	60	10

GUL12 – Glen Ullinish, Skye: Archaeological Walkover Survey

No.	Site Name	Site Type	Description	Align-ment	Condition	Period	Height OD (m)	Easting (centre)
17b	Mullach Garaidh Dhuibhe	Twinning pen	A later stone-built twinning pen is attached to the E side of the stone-built section of boundary wall. It measures 2m NW-SE by 1m over walls 0.8m wide and up to 0.7m high.	NW-SE	Ruinous	Post Medieval	60	5
17c	Mullach Garaidh Dhuibhe	Boundary wall	Drystone-built section of a stone/turf boundary wall. It was built with stones and large upright slabs which may have been robbed from an earlier pre-existing structure to its W.	N-S	Ruinous	Post Medieval	60	5
18a	Glenostle	House	A stone-built subrectangular house with rounded corners measures 13m N-S by 5.5m over walls 0.75m wide and up to 1.5m high. There is an entrance in the E wall 1m wide, two windows in the W wall and an internal partition with a central fireplace.	N-S	Ruinous	Post Medieval	70	10
18b	Glenostle	Twinning pen	A later stone-built twinning pen is built against the central partition in house Site 18a. It measures 1.2m N-S by 0.4m and stands up to 0.5m high.	-	Ruinous	Post Medieval	70	5
18c	Glenostle	Kaleyard	A stone-built kaleyard measuring 17m across is attached to house Site 18a. There is an entrance in the E wall 1m wide.	-	Ruinous	Post Medieval	70	5

GUL12 – Glen Ullinish, Skye: Archaeological Walkover Survey

No.	Site Name	Site Type	Description	Align-ment	Condition	Period	Height OD (m)	Easting (centre)
18d	Glenostle	House	A grass-covered stone-built subrectangular house with rounded outside corners measures 8m NW-SE by 5m over walls 0.75-1.5m wide and up to 1.5m high. There is an entrance in the NW wall 1.2m wide.	NW-SE	Degraded	Post Medieval	70	10
18e	Glenostle	Byre	A grass-covered stone-built subrectangular byre measures 6.5m NW-SE by 4.5m overall. The walls are spread to 1.5m wide and up to 1m high in places. There are two internal partitions, which have been later modified for use as pens.	NW-SE	Degraded	Post Medieval	70	10
18f	Glenostle	Twinning pen	A later stone-built twinning pen is built inside byre Site 18e, forming a pen 1m across standing up to 1.4m high.	-	Ruinous	Post Medieval	70	5
18g	Glenostle	Twinning pen	A later stone-built twinning pen was built with Site 18e. It measures approximately 1m across.	-	Degraded	Post Medieval	70	5
18h	Glenostle	Twinning pen	Remains of a later stone-built twinning pen within Site 18e, measuring approximately 1m across.	-	Degraded	Post Medieval	70	5

GUL12 – Glen Ullinish, Skye: Archaeological Walkover Survey

No.	Site Name	Site Type	Description	Align-ment	Condition	Period	Height OD (m)	Easting (centre)
18i	Glenostle	House	The very degraded remains of a subrectangular possible house, stone and turf-built, are located S of Site 18e under grass and rushes. It measures 8m NW-SE by 5m over walls spread to 1.5m wide and stands up to 0.3m high. There is no visible entrance.	NW-SE	Very degraded	Post Medieval	70	10
19a	Dun Arkaig	Shieling	Under rushes and grass is stone-turf D-shaped single cell shieling measuring 6m NE-SW by 4m built against a rock outcrop. The walls are spread to 0.8m wide and stand up to 0.5m high. There are two twinning pens within the shieling.	NE-SW	Degraded	Post Medieval	95	10
19b	Dun Arkaig	Twinning pen	A later stone-built twinning pen is built inside shieling Site 19a, measuring approximately 1m across.	-	Degraded	Post Medieval	95	5
19c	Dun Arkaig	Twinning pen	A later stone-built twinning pen is built inside shieling Site 19a, measuring approximately 1m across.	-	Degraded	Post Medieval	95	5
20a	Dun Arkaig	Broch	A secondary or external skin of stone walling was visible on the W side of the broch.	-	Degraded	Iron Age	100	20

GUL12 – Glen Ullinish, Skye: Archaeological Walkover Survey

No.	Site Name	Site Type	Description	Align-ment	Condition	Period	Height OD (m)	Easting (centre)
20b	Dun Arkaig	Broch	A subcircular stone-built broch was built on top of a naturally rocky knoll with views to N, E and W. It is in a ruinous state with only part of an entrance visible in the NE wall and one intramural gallery partly visible in the SE quadrant.	-	Degraded	Iron Age	100	20
21	Glen Colbost	Structures	Remains of structures comprising fragments of turf banks spread 1.5-2m wide and standing 0.25-0.75m high under dense reeds and grass. They predate the sheepfold Site 23 and may have been partially robbed for its construction.	-	Very degraded	Unknown	80	10
22	Glen Colbost	House or byre	A stone/turf subrectangular structure is very degraded measures 15m NW-SE by 7m over walls spread to 2m and surviving to 0.25m high. There is a possible entrance in the NE wall.	NW-SE	Very degraded	Post Medieval	80	10
23	Glen Colbost	Sheepfold	A pentagonal stone-built sheepfold postdates the settlement structures and earlier boundary walls on the site. There is an entrance in the N side 1.5m wall and the walls measure 0.75-1m wide.	-	Ruinous	Post Medieval	80	5

GUL12 – Glen Ullinish, Skye: Archaeological Walkover Survey

No.	Site Name	Site Type	Description	Align-ment	Condition	Period	Height OD (m)	Easting (centre)
24a	Glen Colbost	Enclosure	Under grass and rushes is a subrectangular turf/stone-built enclosure measuring 20m across over walls spread to 2m wide and standing up to 0.8m high.	-	Degraded	Post Medieval	80	5
24b	Glen Colbost	House or byre	A subrectangular turf/stone house is attached to enclosure Site 24a. It measures 16m E-W by 5m over walls spread to 1m wide and standing up to 0.5m high.	E-W	Very degraded	Post Medieval	80	10
25	Glen Colbost	Bothy	The very degraded remains of a turf/stone bothy is covered in dense rushes and heather. It measures 6m NW-SE by 4m over walls 0.7m wide and up to 0.5m high. There was no visible entrance	NW-SE	Very degraded	Post Medieval	80	10
26	Glen Colbost	Bothy	The very degraded remains of a turf/stone bothy is covered in dense rushes and heather. It measures 6m NW-SE by 4m over walls 0.7m wide and up to 0.5m high. There was no visible entrance	NW-SE	Very degraded	Post Medieval	80	10
27a	Glen Colbost	Shieling or pen	A grass-covered subcircular stone/turf shieling or pen is attached to a turf/stone boundary wall. It measures 2.5m N-S by 1.5m with walls spread to 1.5m and standing up to 0.6m high. The entrance is in the N wall.	N-S	Degraded	Post Medieval	80	10



GUL12 – Glen Ullinish, Skye: Archaeological Walkover Survey

No.	Site Name	Site Type	Description	Align-ment	Condition	Period	Height OD (m)
27b	Glen Colbost	Shieling or pen	A grass-covered subcircular stone/turf mound attached to a turf/stone boundary wall may be a second shieling. It measures 2.m across.	-	Very degraded	Post Medieval	80
28a	Glen Colbost	Bothy	A grass-covered subcircular stone/turf bothy is attached to a stone boundary wall. It measures 3.5m NW-SE by 2m over walls 0.8m wide and up to 0.6m high. The entrance in the E wall is 0.5m wide.	NW-SE	Degraded	Post Medieval	80
28b	Glen Colbost	Twinning pen	A later stone-built twinning pen was built inside Site 28a. It measures 1.2m by 0.7m and stands to 0.4m high.	-	Ruinous	Post Medieval	80
29a	Meashader	Shieling	A moss- and grass-covered subcircular double-cell shieling measures 3m NW-SE by 2m over walls spread to 1.1m and up to 0.3m high. The smaller cell to SE measures 1m across.	NW-SE	Very degraded	Post Medieval	100
29b	Meashader	Shieling	Under grass and rushes is a subcircular mound measuring 5m NW-SE by 3m, which may have been a shieling.	NW-SE	Very degraded	Post Medieval	100
29c	Meashader	Shieling	Under grass and rushes is a subcircular mound measuring 4m NW-SE by 3m, which may have been a shieling.	E-W	Very degraded	Post Medieval	100
29d	Meashader	Shieling	Under grass and rushes is a subcircular mound measuring 4m across, which may have been a shieling.	NW-SE	Very degraded	Post Medieval	100

GUL12 – Glen Ullinish, Skye: Archaeological Walkover Survey

No.	Site Name	Site Type	Description	Align-ment	Condition	Period	Height OD (m)
30	Meashader	Still	Under grass and 2m W of the burn, is a stone/turf structure measuring 2.5m N-Se by 1.5m and standing up to 0.7m high. Its location suggests it was a still.	N-S	Very degraded	Post Medieval	70
31a	Glen Colbost	Structure	The very degraded remains of moss- and grass-covered stone footings measuring approximately 8m by 6m and surviving up to 0.2m high may have been a structure.	NW-SE	Very degraded	Unknown	60
31b	Glen Colbost	Clearance cairn	A grass- and moss-covered clearance cairn measures 3m by 2m and stands up to 0.4m high	-	Degraded	Post Medieval	60
31c	Glen Colbost	Clearance cairn	A grass- and moss-covered clearance cairn measures 3m by 1m and stands up to 0.4m high	-	Degraded	Post Medieval	60
31d	Glen Colbost	Clearance cairn	A grass- and moss-covered clearance cairn measures 3m by 1m and stands up to 0.4m high	-	Degraded	Post Medieval	60
31e	Glen Colbost	Clearance cairn	A grass- and moss-covered clearance cairn measures 3m by 1m and stands up to 0.4m high	-	Degraded	Post Medieval	60
32	Glen Colbost	Structure	A grass-covered subcircular raised area with stone visible along the edges may have been an earlier structure which is completely degraded away. It measures 7m across, but has been disturbed by later rig and furrow.	-	Very degraded	Unknown	70

GUL12 – Glen Ullinish, Skye: Archaeological Walkover Survey

No.	Site Name	Site Type	Description	Align-ment	Condition	Period	Height OD (m)
33	Glenostle	House/ byre	Under grass and rushes is a stone/turf house/byre measuring 11m NW-SE by 4m over walls spread to 1.5m and standing up to 0.75m high. There is an internal partition and an entrance 1m wide in the NE wall .	NW-SE	Degraded	Post Medieval	55
34	Glenostle	Possible shieling	A moss- and grass-covered low mound measuring 3m N-S by 2m over walls spread to 0.5m may have been a shieling.	N-S	Very degraded	Post Medieval	55
35	Glen Ullinish	Peat cutting	Visible under heather are numerous disused areas of peat cutting.	-	Degraded	Post Medieval	85
36	Glen Ullinish	Clearance cairn	A grass- and moss-covered clearance cairn measures 5m by 2m and stands up to 0.3m high.	-	Degraded	Post Medieval	55
37	Glenostle	Peat cutting	Visible under heather is a disused area of peat cutting.	-	Degraded	Post Medieval	75
38a	Glen Colbost	Clearance cairn	Visible below grass and rushes is a clearance cairn measures 3m by 1m and stands up to 0.4m high	-	Degraded	Post Medieval	75
38a	Glen Colbost	Clearance cairn	Visible below grass and rushes is a clearance cairn measures 3m by 1m and stands up to 0.4m high	-	Degraded	Post Medieval	75
38b	Glen Colbost	Clearance cairn	Visible below grass and rushes is a clearance cairn measures 4m by 2.5m and stands up to 0.4m high	-	Degraded	Post Medieval	75

GUL12 – Glen Ullinish, Skye: Archaeological Walkover Survey

No.	Site Name	Site Type	Description	Align-ment	Condition	Period	Height OD (m)
38c	Glen Colbost	Clearance cairn	Visible below grass and rushes is a clearance cairn measures 4m by 2m and stands up to 0.6m high	-	Degraded	Post Medieval	75
39	Glen Ullinish	Rig and furrow	The remains of rig and furrow are visible under open pasture; rigs measure 2m wide and furrows 1m wide, surviving up to 0.2m high	NW-SE	Very degraded	Post Medieval	85
40	Glen Ullinish	Rig and furrow	The remains of rig and furrow are visible under open pasture; rigs measure 1.5m wide and furrows 1m wide, surviving up to 0.2m high	NW-SE	Very degraded	Post Medieval	80
41	Glen Ullinish	Rig and furrow	The remains of rig and furrow are visible under open pasture; rigs measure 1.5m wide and furrows 1m wide, surviving up to 0.2m high	NW-SE	Very degraded	Post Medieval	75
42	Glen Ullinish	Rig and furrow	The remains of rig and furrow are visible under open pasture; rigs measure 1m wide and furrows 1m wide, surviving up to 0.2m high	NW-SE	Very degraded	Post Medieval	50
43	Glen Ullinish	Rig and furrow	The remains of rig and furrow are visible under open pasture; rigs measure 1.5m wide and furrows 1m wide, surviving up to 0.2m high	NW-SE	Very degraded	Post Medieval	45
44	Glen Ullinish	Rig and furrow	The remains of rig and furrow are visible under open pasture; rigs measure 1.5m wide and furrows 1m wide, surviving up to 0.2m high	NW-SE	Very degraded	Post Medieval	60

GUL12 – Glen Ullinish, Skye: Archaeological Walkover Survey

<b>No.</b>	<b>Site Name</b>	<b>Site Type</b>	<b>Description</b>	<b>Align- ment</b>	<b>Condition</b>	<b>Period</b>	<b>Height OD (m)</b>
45	Glen Ullinish	Rig and furrow	The remains of rig and furrow are visible under open pasture; rigs measure 1.5m wide and furrows 1m wide, surviving up to 0.2m high	NW-SE	Very degraded	Post Medieval	65
46	Glen Ullinish	Rig and furrow	The remains of rig and furrow are visible under open pasture; rigs measure 2.5m wide and furrows 0.7m wide, surviving up to 0.25m high	NW-SE	Very degraded	Post Medieval	50
47	Glen Colbost	Rig and furrow	The remains of rig and furrow are visible under open pasture; rigs measure 2.5m wide and furrows 1m wide, surviving up to 0.3m high	NW-SE	Very degraded	Post Medieval	65
48	Glen Colbost	Rig and furrow	The remains of rig and furrow are visible under open pasture; rigs measure 2m wide and furrows 1m wide, surviving up to 0.3m high	WNW- ESE	Very degraded	Post Medieval	65
49	Glen Colbost	Rig and furrow	The remains of rig and furrow are visible under open pasture; rigs measure 2.5m wide and furrows 1m wide, surviving up to 0.3m high	ENE- WSW	Very degraded	Post Medieval	65
50	Glen Colbost	Rig and furrow	The remains of rig and furrow are visible under open pasture; rigs measure 2m wide and furrows 1m wide, surviving up to 0.3m high	ENE- WSW, WNW- ESE	Very degraded	Post Medieval	65
51	Glen Colbost	Rig and furrow	The remains of rig and furrow are visible under open pasture; rigs measure 2m wide and furrows 1m wide, surviving up to 0.3m high	NNW- ESE	Very degraded	Post Medieval	50

GUL12 – Glen Ullinish, Skye: Archaeological Walkover Survey

No.	Site Name	Site Type	Description	Align- ment	Condition	Period	Height OD (m)
52	Glenostle	Rig and furrow	The remains of rig and furrow are visible under open pasture; rigs measure 1.5-2m wide and furrows 1m wide, surviving up to 0.2m high	NW-SE	Very degraded	Post Medieval	65
53	Glenostle	Rig and furrow	The remains of rig and furrow are visible under open pasture; rigs measure 1.5-2m wide and furrows 1m wide, surviving up to 0.2m high	NW-SE	Very degraded	Post Medieval	65
54	Glen Colbost	Rig and furrow	The remains of rig and furrow are visible under grass and heather; rigs measure 2.5m wide and furrows 0.8m wide, surviving up to 0.4m high	NE-SW NE-SW	Very degraded	Post Medieval	75
55	Glenostle	Rig and furrow	The remains of rig and furrow are visible under open pasture; rigs measure 1.5-2m wide and furrows 1m wide, surviving up to 0.2m high	NNW- SSE  NNW- SSE	Very degraded	Post Medieval	40
56	Glenostle	Rig and furrow	The remains of rig and furrow are visible under open pasture; rigs measure 1.5-2m wide and furrows 1m wide, surviving up to 0.2m high	NNW- SSE  NNW- SSE	Very degraded	Post Medieval	60
57	Glenostle	Rig and furrow	The remains of rig and furrow are visible under open pasture; rigs measure 1.5-2m wide and furrows 1m wide, surviving up to 0.2m high	E-W	Very degraded	Post Medieval	60
58	Glenostle	Rig and furrow	The remains of rig and furrow are visible under grass and heather; rigs measure 1.5-2m wide and furrows 1m wide, surviving up to 0.2m high	E-W, N-S	Very degraded	Post Medieval	65

GUL12 – Glen Ullinish, Skye: Archaeological Walkover Survey

No.	Site Name	Site Type	Description	Align-ment	Condition	Period	Height OD (m)
59	Glenostle	Rig and furrow	The remains of rig and furrow are visible under grass and heather; rigs measure 1.5-2m wide and furrows 1m wide, surviving up to 0.2m high	NW-SE	Very degraded	Post Medieval	55
60	Glenostle	Rig and furrow	The remains of rig and furrow are visible under grass and heather; rigs measure 1.5-2m wide and furrows 1m wide, surviving up to 0.2m high	NW-SE	Very degraded	Post Medieval	60
61	Glen Ullinish	Boundary wall	Turf/stone boundary wall, comprising walls spread 1.5-2.5m wide and surviving 0.5-1.2m high, encloses an area of rig and furrow.	-	Degraded	Post Medieval	-
62	Glen Ullinish	Boundary wall	Very degraded stone/turf wall, which formed part of an earlier boundary wall.	-	Very degraded	Post Medieval	-
63	Glen Ullinish	Boundary wall	Turf boundary wall spread to 2m and standing up to 1m high	-	Very degraded	Post Medieval	-
64	Glen Ullinish	Boundary wall	Stone boundary wall spread to 1.2m and standing up to 0.6m high, overlies earlier structures and encloses settlement Sites 3 and 7	-	Very degraded	Post Medieval	-
65	Glen Ullinish	Boundary wall	Turf boundary wall spread to 1m and standing up to 0.5m high	-	Very degraded	Post Medieval	-
66	Glen Ullinish	Boundary wall	Turf/stone boundary wall, comprising walls spread 2-2.5m wide and surviving 0.5-1m high, encloses an area of rig and furrow.	-	Degraded	Post Medieval	-

GUL12 – Glen Ullinish, Skye: Archaeological Walkover Survey

No.	Site Name	Site Type	Description	Align-ment	Condition	Period	Height OD (m)
67	Glen Ullinish	Boundary wall	Turf/stone boundary wall, comprising walls spread 2-2.5m wide and surviving 0.5-1m high, encloses areas of rig and furrow.	-	Degraded	Post Medieval	-
68	Glen Ullinish	Boundary wall	Turf/stone boundary wall, comprising walls spread 2-2.5m wide and surviving 0.5-1m high, encloses an area of rig and furrow.	-	Degraded	Post Medieval	-
69	Glen Ullinish	Boundary wall	Turf/stone boundary wall, comprising walls spread 2-2.5m wide and surviving 0.3-7m high, encloses an area of rig and furrow.	-	Degraded	Post Medieval	-
70	Glen Ullinish	Boundary wall	Turf/stone boundary wall, comprising walls spread 2-2.5m wide and surviving 0.3-1m high.	-	Degraded	Post Medieval	-
71	Glen Ullinish	Boundary wall	Turf/stone boundary wall, comprising walls spread 2m wide and surviving 0.7m high.	-	Very degraded	Post Medieval	-
72	Glen Ullinish	Boundary wall	Turf/stone boundary wall, comprising walls spread 1m wide and surviving 0.4m high.	-	Very degraded	Post Medieval	-
73	Glen Ullinish	Boundary wall	Turf/stone boundary wall, comprising walls spread 2m wide and surviving 0.3m high.	-	Very degraded	Post Medieval	-
74	Glen Ullinish	Boundary wall	Turf/stone boundary wall, comprising walls spread to 1.2-2.5m wide and surviving 0.8-1.2m high.	-	Degraded	Post Medieval	-



GUL12 – Glen Ullinish, Skye: Archaeological Walkover Survey

No.	Site Name	Site Type	Description	Align-ment	Condition	Period	Height OD (m)
75	Glen Ullinish	Boundary wall	Turf/stone boundary wall, comprising walls spread to 2m wide and surviving 0.5m high.	-	Very degraded	Post Medieval	-
76	Glenostle	Boundary wall	Turf/stone boundary wall, comprising walls spread to 2-3m wide and surviving up to 1m high.	-	Very degraded	Post Medieval	-
77	Glenostle	Boundary wall	Turf/stone boundary wall, comprising walls spread to 1-2m wide and surviving 0.5-0.8m high.	-	Very degraded	Post Medieval	-
78	Glenostle	Boundary wall	Turf/stone boundary wall, comprising walls spread to 1-1.5m wide and surviving 0.8-1.5m high.	-	Degraded	Post Medieval	-
79	Glenostle	Boundary wall	Turf boundary wall, comprising walls 1m wide and surviving to 0.3m high.	-	Very degraded	Post Medieval	-
80	Glen Ullinish	Boundary wall	Turf boundary wall, comprising walls 1-1.5m wide and surviving to 0.3m high.	-	Very degraded	Post Medieval	-
81	Glen Colbost	Boundary wall	Turf/stone boundary wall, comprising walls spread to 1-1.5m wide and surviving 0.6-1m high, encloses area of rig and furrow	-	Degraded	Post Medieval	-
82	Glen Colbost	Boundary wall	Turf/stone boundary wall, comprising walls spread to 1.5-2m wide and surviving 1-1.5m high.	-	Degraded	Post Medieval	-
83	Glen Colbost	Boundary wall	Turf/stone boundary wall, comprising walls spread to 1.5-2m wide and surviving 0.3-1m high, encloses rig and furrow.	-	Degraded	Post Medieval	-

GUL12 – Glen Ullinish, Skye: Archaeological Walkover Survey

No.	Site Name	Site Type	Description	Align-ment	Condition	Period	Height OD (m)
84	Glen Colbost	Boundary wall	Turf/stone boundary wall, comprising walls spread to 1.2m wide and surviving 0.8m high.	-	Very degraded	Post Medieval	-
85	Glen Colbost	Boundary wall	Turf/stone boundary wall, comprising walls spread to 1m wide and surviving 0.6m high, encloses area of rig and furrow and forms part of settlement Site 15 boundary	-	Very degraded	Post Medieval	-
86	Glen Colbost	Boundary wall	Turf/stone boundary wall, comprising walls spread to 1.5m wide and surviving 0.6m high, encloses area of rig and furrow and forms part of settlement Site 15 boundary	-	Very degraded	Post Medieval	-
87	Glen Colbost	Boundary wall	Turf/stone boundary wall, comprising walls spread to 1m wide and surviving 0.5m high	-	Very degraded	Post Medieval	-
88	Glen Colbost	Boundary wall	Turf boundary wall, comprising walls spread to 1m wide and surviving 0.4m high	-	Very degraded	Post Medieval	-
89	Glen Colbost	Boundary wall	Turf boundary wall, comprising walls spread to 1.5m wide and surviving 0.6m high	-	Very degraded	Post Medieval	-
90	Glen Colbost	Boundary wall	Turf/stone boundary wall, comprising walls spread to 1.5-2m wide and surviving 1-1.5m high	-	Very degraded	Post Medieval	-
91	Glen Colbost	Boundary wall	Turf boundary wall, comprising walls spread to 1m wide and surviving 0.8m high	-	Degraded	Post Medieval	-

GUL12 – Glen Ullinish, Skye: Archaeological Walkover Survey

No.	Site Name	Site Type	Description	Align-ment	Condition	Period	Height OD (m)
92	Glen Colbost	Boundary wall	Stone/turf wall spread 1.5-2m and standing up to 1.2m high, encloses areas of rig and furrow and marks transition from cultivation to moorland	-	Degraded	Post Medieval	-
93	Glen Colbost	Boundary wall	Stone/turf wall spread 2m and standing up to 0.8m high	-	Very degraded	Post Medieval	-
94	Glen Colbost	Boundary wall	Stone/turf wall spread to 1.2m and standing up to 0.8m high	-	Very degraded	Post Medieval	-
95	Glen Colbost	Boundary wall	Stone/turf wall spread to 1.2m and standing up to 0.8m high	-	Degraded	Post Medieval	-
96	Glen Colbost	Boundary wall	Stone/turf wall spread to 1m and standing up to 0.4m high	-	Very degraded	Post Medieval	-
97	Glen Colbost	Boundary wall	Stone/turf wall spread to 1-1.5m and standing up to 0.5m high	-	Very degraded	Post Medieval	-
98	Glen Colbost	Boundary wall	Stone/turf wall spread to 1.5m and standing up to 0.8m high	-	Very degraded	Post Medieval	-
99	Glen Colbost	Boundary wall	Stone/turf wall spread to 1.5-2m and standing up to 0.5m high	-	Very degraded	Post Medieval	-
100	Glen Colbost	Boundary wall	Stone/turf wall spread to 2-2.5m and standing up to 1.2m high, ends in boggy land	-	Degraded	Post Medieval	-
101	Glen Colbost	Boundary wall	Stone boulder wall comprising one course of stonework	-	Very degraded	Unknown	-

GUL12 – Glen Ullinish, Skye: Archaeological Walkover Survey

No.	Site Name	Site Type	Description	Align-ment	Condition	Period	Height OD (m)
102	Glen Colbost	Boundary wall	Stone/turf wall spread to 1.5m and standing up to 0.7m high	-	Very degraded	Post Medieval	-
103	Glen Colbost	Boundary wall	Stone/turf wall spread to 1.3m and standing up to 0.5m high	-	Very degraded	Post Medieval	-
104	Glen Colbost	Boundary wall	Stone/turf wall spread 1.5m and standing up to 1m high, encloses areas of rig and furrow and marks transition from cultivation to moorland	-	Degraded	Post Medieval	-
105	Glen Colbost	Boundary wall	Stone/turf wall spread 1.5m and standing up to 0.7m high, encloses areas of rig and furrow	-	Degraded	Post Medieval	-
106	Glen Colbost	Boundary wall	Stone/turf wall spread 1.5m and standing up to 0.7m high, encloses areas of rig and furrow	-	Degraded	Post Medieval	-
107	Glen Colbost	Boundary wall	Stone/turf wall spread 1.5m and standing up to 0.7m high, encloses areas of rig and furrow	-	Degraded	Post Medieval	-
108	Glenostle	Boundary wall	Stone/turf wall spread 1.5m and standing up to 0.7m high, encloses areas of rig and furrow	-	Degraded	Post Medieval	-
109	Glenostle	Boundary wall	Stone/turf wall spread 1.5m and standing up to 0.7m high, encloses area of rig and furrow	-	Degraded	Post Medieval	-
110	Glenostle	Boundary wall	Stone/turf wall spread 1.5-2m and standing up to 1m high	-	Very degraded	Post Medieval	-
111	Glenostle	Boundary wall	Linear spread of stone, probable remains of a boundary wall	-	Very degraded	Unknown	-

GUL12 – Glen Ullinish, Skye: Archaeological Walkover Survey

<b>No.</b>	<b>Site Name</b>	<b>Site Type</b>	<b>Description</b>	<b>Align- ment</b>	<b>Condition</b>	<b>Period</b>	<b>Height OD (m)</b>
<b>112</b>	Glenostle	Boundary wall	Stone/turf wall spread to 1.5m and standing up to 0.5m high; part of the settlement Site 18 boundary	-	Very degraded	Post Medieval	-
<b>113</b>	Glenostle	Boundary wall	Stone/turf wall spread to 1.5m and standing up to 0.5m high	-	Very degraded	Post Medieval	-
<b>114</b>	Glenostle	Boundary wall	Stone/turf wall spread to 1.5m and standing up to 0.5m high	-	Very degraded	Post Medieval	-
<b>115</b>	Glenostle	Boundary wall	Turf wall spread to 1.5m and standing up to 0.3m high	-	Very degraded	Post Medieval	-
<b>116</b>	Glenostle	Boundary wall	Stone/turf wall spread to 1.5m and standing up to 0.5m high	-	Very degraded	Post Medieval	-
<b>117</b>	Glenostle	Boundary wall	Turf wall spread to 1.5m and standing up to 0.3m high	-	Very degraded	Post Medieval	-
<b>118</b>	Glenostle	Boundary wall	Alignment of single course of stones/boulders, disappears into peat	-	Very degraded	Unknown	-
<b>119</b>	Mullach Garaidh Dhuibhe	Boundary wall	Stone/turf wall spread to 1.5m and standing up to 0.5m high, associated with shieling settlement Site 16	-	Very degraded	Post Medieval	-
<b>120</b>	Mullach Garaidh Dhuibhe	Boundary wall	Sub-peat dyke, alignment of upright boulders mostly consumed by peat	-	Very degraded	Unknown	-
<b>121</b>	Mullach Garaidh Dhuibhe	Boundary wall	Stone/turf wall spread to 1m and standing up to 0.5m high	-	Very degraded	Post Medieval	-

GUL12 – Glen Ullinish, Skye: Archaeological Walkover Survey

<b>No.</b>	<b>Site Name</b>	<b>Site Type</b>	<b>Description</b>	<b>Align-ment</b>	<b>Condition</b>	<b>Period</b>	<b>Height OD (m)</b>
<b>122</b>	Meashader	Boundary wall	Turf wall spread to 1.5m and standing up to 0.8m high	-	Very degraded	Post Medieval	-
<b>123</b>	Meashader	Boundary wall	Turf wall spread to 1m and standing up to 0.8m high	-	Very degraded	Post Medieval	-

**APPENDIX 2            Glen Ullinish: Index of Photographs**

<b>No.</b>	<b>Direction Facing</b>	<b>Site No.</b>	<b>Notes</b>	<b>Taken By</b>	<b>Date</b>
1	ESE	1	Looking across the grazings towards stone/turf house and byre in the N corner of Red survey area	MKP	04/05/2012
2	SE	1a, 1b, 1c	Looking over Site 1, ruinous stone/turf house and byre with later twinning pens built within interior	MKP	04/05/2012
3	SSE	1a, 1c	Stone-built twinning pen (1c) in SE corner of Site 1a	MKP	04/05/2012
4	SE	1a, 1c, 61	Stone-built twinning pen (1c) in SE corner of Site 1a and stone/turf dyke running along W side of the structure	MKP	04/05/2012
5	S	2	Disused possible quarry with remains of a bank at the base	MKP	04/05/2012
6	ESE	4	Looking across grazings towards raised area of Site 4, stone alignments from unknown and mostly degraded structure(s)	MKP	04/05/2012
7	SSW	3	View S across multi-period abandoned settlement at Glen Ullinish	MKP	04/05/2012
8	WNW	3h, 3j	Ruinous drystone house Site 3h with later twinning pen, Site 3j, constructed in the SW corner	MKP	04/05/2012
9	ENE	3d, 3h	Looking across the enclosed area towards the abandoned Glen Ullinish settlement, Site 3	MKP	04/05/2012
10	NE	5, 3d 3h	Looking across the enclosed area and over N edge of disused quarry, Site 5, towards the abandoned Glen Ullinish settlement, Site 3	MKP	04/05/2012
11	NNE	3c, 3d, 3h	Ruined house, Site 3h and ruined byre 3d and house 3c in background	MKP	04/05/2012
12	SW	6	Stone setting of unknown use--modern hearth used by campers?	MKP	04/05/2012
13	SE	7, 7b, 64	View across probable earlier settlement, Site 7, at Glen Ullinish with Site 3 in background; later stone-built twinning pen (7b) attached to stone/turf boundary wall (64) is in the centre of the photograph	MKP	04/05/2012
14	ESE	7, 7b, 64	View across probable earlier settlement, Site 7, at Glen Ullinish with Site 3 in background; later stone-built twinning pen (7b) attached to stone/turf boundary wall (64) is in the centre of the photograph	MKP	04/05/2012
15	SSE	7f, 3	Degraded stone/turf house or byre (7f) with Site 3 in background	MKP	04/05/2012

GUL12 – Glen Ullinish, Skye: Archaeological Walkover Survey

No.	Direction Facing	Site No.	Notes	Taken By	Date
16	SE	-	View across NE side of red survey area looking towards orange survey area, River Ose and Dun Arkaig	MKP	04/05/2012
17	ESE	8a	A moss- and grass-covered stone-built shieling or bothy located at the base of a rock outcrop	MKP	04/05/2012
18	E	8b	A moss- and grass-covered stone-built shieling or bothy located at the base of a rock outcrop	MKP	04/05/2012
19	SE	9	Stone/turf house or byre built on top of an outcrop, under grass and rushes	MKP	04/05/2012
20	WSW	10b	A grass-covered stone/turf subrectangular house abutting Site 10a byre to right	MKP	04/05/2012
21	ESE	20, 23	View from Red survey area across to Dun Arkaig with the broch on top, and late 18th/early 19th c. stone sheepfold to the left	MKP	04/05/2012
22	ESE	20, 23	View across Red survey area towards Orange survey area and Dun Arkaig in background	MKP	04/05/2012
23	SSE	-	View over Red survey area across to the Orange survey area	MKP	04/05/2012
24	SE	13	A grass-covered stone/turf subrectangular pen attached to a stone/turf boundary wall on a low terrace above River Ose	MKP	04/05/2012
25	SE	69	View down stone/turf boundary wall forming part of a field enclosure at Glen Ullinish	MKP	04/05/2012
27	NNW	15a	Ruined stone/turf house at Glen Calbost with twinning pens in N and SW corners	MKP	04/05/2012
28	SW	15d	Looking through entrance of ruinous stone/turf byre	MKP	04/05/2012
29	S	15d	Ruined stone/turf byre with twinning pen in W corner	MKP	04/05/2012
30	NW	85	Looking northward across stone/turf dyke in Glen Calbost	MKP	04/05/2012
31	N	85	View over stone/turf dyke across towards existing wind turbines in background in Glen Vic Askill	MKP	04/05/2012
32	SSW	16a, 16b	Stone/turf shieling (16a) with later stone twinning pen (16b); looking across the moor and proposed access route towards Loch Bracadale	MKP	05/05/2012
33	NE	16d, 16e	Stone/turf double cell shieling (16d) and later stone twinning pen (16e); background view across proposed access track	MKP	05/05/2012
34	NE	16f, 16g	Stone/turf shieling (16f) with later stone twinning pen (16g)	MKP	05/05/2012
35	ESE	16h, 16j, 16i	Stone/turf shieling (16h) built against rock outcrop with later stone twinning pen (16i)	MKP	05/05/2012



GUL12 – Glen Ullinish, Skye: Archaeological Walkover Survey

No.	Direction Facing	Site No.	Notes	Taken By	Date
36	NE	16h, 16j, 16i	Stone/turf shieling (16h) built against rock outcrop with later stone twinning pens (16i, 16j)	MKP	05/05/2012
37	SW	16	View southward across the proposed access track, the green mound in centre is the location of the shieling settlement Site 16 and green linear feature to centre left is the associated stone/turf boundary wall Site 119	MKP	05/05/2012
38	NE	-	Looking up through Glen Ullinish across the survey area and River Ose in background	MKP	05/05/2012
39	WNW	17a	Site 17a, feeding area for sheep	MKP	05/05/2012
40	N	17	Slightly raised circular grass-covered mound, Site 17a, in centre left of photo with the stone-built section of the boundary dyke, Site 17c, very visible to centre right of photo	MKP	05/05/2012
41	WSW	17b	Later stone-built twinning pen attached the stone boundary dyke	MKP	05/05/2012
42	N	18	View across SW portion of Orange survey area to Glenostle settlement, Site 18	MKP	05/05/2012
43	NW	18a	Ruined stone-built house at Glenostle, Site 18a	MKP	05/05/2012
44	NE	18a, 18b	Ruined stone-built house at Glenostle, Site 18a, and later twinning pen (18b) visible in corner of house (centre right)	MKP	05/05/2012
45	SSW	18a	Ruined stone-built house at Glenostle, Site 18a	MKP	05/05/2012
46	SSW	18a	Ruined stone-built house at Glenostle, Site 18a	MKP	05/05/2012
47	S	18d, 18e	Ruined stone-built house (18d) and byre (18e) in background	MKP	05/05/2012
48	NNW	18e, 18f	Ruined byre and later twinning pen	MKP	05/05/2012
49	N	18e, 18i	Ruined stone byre (18e) in background and very degraded stone/turf structure (18i) in foreground	MKP	05/05/2012
50	E	102	View across stone/turf dyke marking boundary between cultivated land and heather-covered moorland; dyke runs across to Dun Arkaig in background	MKP	05/05/2012
51	ENE	20, 102	Post Medieval boundary dyke running up to the knoll of Dun Arkaig broch	MKP	05/05/2012
52	W	-	Looking across the survey area from Dun Arkaig towards Loch Bracadale and Macleod's Tables	MKP	05/05/2012
53	N	-	Looking N over Dun Arkaig broch across the survey area	MKP	05/05/2012

GUL12 – Glen Ullinish, Skye: Archaeological Walkover Survey

No.	Direction Facing	Site No.	Notes	Taken By	Date
54	WNW	-	Looking across the survey area from Dun Arkaig towards Loch Bracadale and Macleod's Tables	MKP	05/05/2012
55	SW	19a	Stone/turf shieling attached to rock outcrop at base of Dun Arkaig to SW side	MKP	05/05/2012
56	W	19a	Stone/turf shieling attached to rock outcrop at base of Dun Arkaig to SW side	MKP	05/05/2012
57	SW	20a	View across broch on top of Dun Arkaig, showing the circular shape and rubble tumble at the centre; a later cairn marks the site	MKP	05/05/2012
58	SW	20a	Looking up to Dun Arkaig showing one preserved outer face of walling of the broch, Site 20a	MKP	05/05/2012
59	NE	23, 24a	Turf/stone oval enclosure, Site 24a, in centre right of photo to the right of later stone-built sheepfold, Site 23	MKP	05/05/2012
60	WNW	22, 38b	Under dense reeds, a sub-rectangular turf/stone structure (22), very degraded, and clearance cairn (38b) to right	MKP	05/05/2012
61	SW	23, 27a	Stone/turf shieling or pen (27a) attached to stone/turf dyke and stone-built sheepfold (23) in background	MKP	05/05/2012
62	N	28a, 28b	Stone/turf bothy (28a) attached to stone/turf dyke; later stone-built twinning pen (28b) inside	MKP	05/05/2012
63	NW	29c	Remains of stone/turf shieling below Lynn; located at about 100m OD above the burn	MKP	05/05/2012
64	NNW	-	Looking northward across the survey area, from the E end of the orange area towards the existing wind turbines	MKP	05/05/2012
65	E	30	Very degraded remains of stone/turf built possible still, revetted into hillslope and located 2m from the edge of the burn (GPS for scale)	MKP	05/05/2012
66	NE	92	View across stone/turf dyke marking boundary between cultivated land and heather-covered moorland	MKP	05/05/2012
67	NW	85	Looking down stone/turf dyke across the NE side of Orange survey area	MKP	05/05/2012
68	N	31	Very degraded stone/turf bank (31a, below Lynn) and several small, low clearance cairns	MKP	05/05/2012
69	SSE	33	Under grass and rushes is a stone/turf house/byre with an internal partition	MKP	05/05/2012
70	SW	120	Looking SW along sub-peat dyke running out towards Loch Bracadale	LF	05/05/2012
71	NNE	120	Alignment of upright boulders forming probable early stone dyke, possibly prehistoric	LF	05/05/2012

GUL12 – Glen Ullinish, Skye: Archaeological Walkover Survey

<b>No.</b>	<b>Direction Facing</b>	<b>Site No.</b>	<b>Notes</b>	<b>Taken By</b>	<b>Date</b>
<b>72</b>	SW	120	Alignment of upright boulders forming probable early stone dyke, possibly prehistoric	LF	05/05/2012
<b>73</b>	NW	20	Iron Age broch on top of Dun Arkaig	LF	05/05/2012
<b>74</b>	NE	23	Late 19th/early 20th c. stone-built sheepfold at the base of the NE side of Dun Arkaig	LF	05/05/2012