



ROSS & CROMARTY ARCHAEOLOGICAL SERVICES

## **Novar Woodland Creation**

### **Archaeological Desk-based Assessment and Walkover Survey**



National Grid Reference	<b>NH 58000 70715 (Centred)</b>
Site Code	<b>NVR12</b>
Author	<b>Lynn Fraser</b>
Report Number	<b>2013-03/NVR12</b>
Client	<b>Crosscut Forestry</b>
Date	<b>28-01-2013</b>
OASIS No.	<b>rosscrom1-142256</b>

Ryefield, Tore, Ross-shire, IV 6 7SB  
Tel: 01463 811310 Mobile: 07891 578998  
Email: [rossandcromarch@gmail.com](mailto:rossandcromarch@gmail.com)  
[www.rossandcromarch.co.uk](http://www.rossandcromarch.co.uk)

## CONTENTS

<i>List of Figures</i>	2
<i>List of Plates</i>	2
<b>Acknowledgements</b>	2
<i>Summary</i>	3
<b>1 Introduction</b>	3
<b>2 Site Location</b>	3
<b>3 Archaeological and Historical Background</b>	3
<b>4 Methodology</b>	5
<b>4.1 Desk-Based Assessment</b>	5
<b>4.2 Walkover Survey</b>	5
<b>5 Results</b>	6
<b>5.1 Desk-Based Assessment</b>	6
<b>5.1.1 Cartographic Sources</b>	
<b>5.1.2 Highland Council Historic Environment Record</b>	
<b>5.2 Walkover Survey Results</b>	9
<b>5.2.1 Prehistoric sites</b>	
<b>5.2.2 Post Medieval sites</b>	
<b>5.2.3 Sporting sites</b>	
<b>6 Discussion</b>	16
<b>7 Recommendations</b>	16
<b>8 References</b>	17
<b>Appendix 1 Gazetteer of Archaeological Sites</b>	18
<b>Appendix 2 Index of Photographs</b>	27

## List of Figures

1	Location of survey area	4
2	Location of archaeological sites	8
3	Location of sites 2-4	10
4	Location of sites 7-9, 10 and 16-20	12
5	Location of sites 1, 12-15 and 21	13
6	Location of sites 5 and 6	14
7	Location of site 11	15

## List of Plates

### *Cover : Landscape shot across Strath Mor*

1	Site 2, a hut circle	11
2	Site 8, a hut circle	11

## Acknowledgements

We wish to thank Cameron Ross of Crosscut Forestry for commissioning the work. Fieldwork was carried out by Mary Peteranna and Lynn Fraser. All mapping, unless otherwise stated, is reproduced by permission of ProMap license LIG1044. Imagery reproduced under ESRI licensing and provided by Microsoft Bing Maps.

## **NOVAR ESTATE WOODLAND CREATION SCHEME ARCHAEOLOGICAL DESK-BASED ASSESSMENT AND WALKOVER SURVEY**

### **Summary**

*An archaeological desk-based assessment and walkover survey was carried out between 17 December 2012 and 14 January 2013 on behalf of Crosscut Forestry and Novar Estate, Evanton in advance of a new woodland creation scheme at Strath Mor near Evanton in Ross-shire. The work was undertaken to assess the nature and extent of any archaeological sites and features likely to be affected within the area outlined for the proposed woodland creation scheme and to inform recommendations for the protection and management of any sites identified. The survey identified two previously unrecorded hut circles and accurately recorded a known hut circle and field system, shooting butts and boundary dykes. The desk-based assessment revealed that the north-west and south-west peripheries of the area had been subject to survey and a watching brief in 1995, 2002 and 2003. Boundary dykes previously recorded within the survey area are included in this report. Mitigation measures are proposed to safeguard the sites during the woodland planting.*

### **1. Introduction**

- 1.1 An archaeological desk-based assessment and walkover survey was carried out in advance of a woodland creation scheme at Strath Mor near Evanton (centred on NGR NH 58000 70715) on behalf of Crosscut Forestry was carried out by *Ross and Cromarty Archaeological Services* between 17 December 2012 and 14 January 2013 (Figure 1). The archaeological work was conducted as part of the funding process for the planting scheme.
- 1.2 The purpose of the desk-based assessment and archaeological walkover survey was to identify and record the location and nature of any archaeological features of interest prior to planting, whilst assessing any potential adverse impacts and proposing an appropriate strategy of mitigation.

### **2. Site Location**

- 2.1 The survey area is centred on NGR NH 58000 70715 in the parish of Alness in Ross-shire. An area of approximately 500 hectares, it lies to the north of Evanton, Ross-shire. Strath Mor runs in a north-east/south-westerly direction between the hills of Cnoc Ceislein and Cnoc Gille Mo Bhriannaig (Figure 1). There are several streams and Loch a Chaplaich in the survey area, which form wet, boggy areas in places.
- 2.2 The underlying geology of the site is Middle Old Red Sandstone<sup>1</sup>. The survey area comprises open hilly, heather moorland with the exception of the flat river terraces in Strath Mor and ranges in height from 285m to 523m OD.

### **3. Archaeological and Historical Background**

- 3.1 The survey area forms part of the Novar Estate. Bought in the mid-1760s by Sir Hector Munro, he set about improving the land from swamp and bog into rich farmland. Such improvement brought about social and economic dislocation for the local population<sup>2</sup>.

---

<sup>1</sup> BGS 2010

<sup>2</sup> Ash 1991, 72-73

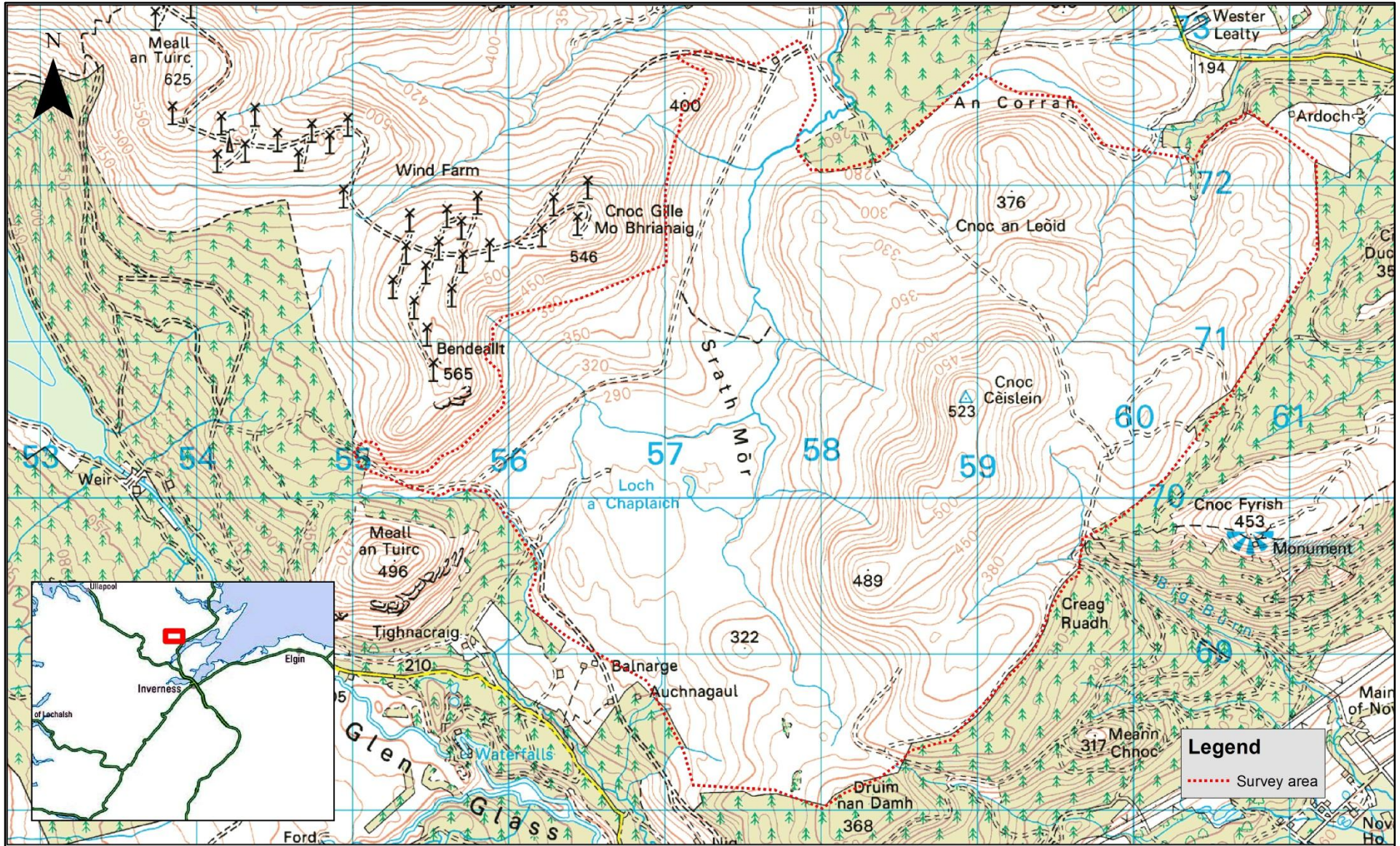


Figure 1: Location of the survey area

Evictions in the late 1790s and early 1800s followed to make way for sheep with no provision being made for the occupants elsewhere, many had to emigrate<sup>3</sup>.

- 3.2 An archaeological survey and watching brief were carried out ahead of the construction of the Novar wind farm, which is located close to the western boundary of the survey area. Post – medieval structures and boundary dykes were recorded at Balnarge and a prehistoric settlement was discovered at Ballone, both within the current survey area.

#### **4. Methodology**

The overall aim of this archaeological walkover survey was to identify and record any archaeological sites or features that might be affected by the proposed woodland creation scheme. This would enable informed mitigation measures and recommendations to be proposed to ensure that archaeological sites would not be damaged or destroyed during planting.

##### **4.1 Desk-based assessment**

- 4.1.1 A desk-based assessment was conducted prior to commencement of the survey in order to assess the archaeological potential of the area based on previously recorded sites and any historical documentation.
- 4.1.2 A search was made of all relevant records from the National Monuments Record of Scotland (NMRS) and the Highland Council Historic Environment Record (HHER). Online aerial photographs were also checked for any relevant site information where possible, while cartographic and other written records were also assessed for information relating to the area proposed for survey.

##### **4.2 Walkover survey**

- 4.2.1 The survey area was walked over and surveyed on 17 December 2012 and 11 and 14 January 2013. Conditions were variable: the first day was cold with variable visibility due to patchy hill-fog. The second day was cold and dry with good visibility whilst the third day was generally fine with the occasional snow shower and snow on the ground. The boggy ground and dense heather in areas caused some difficulty in traversing the ground and some of the steeper ground was not covered on foot as it was extremely unlikely that any archaeological sites would be located here. There are good quality aerial images available for the survey area, which were assessed before, during and after the survey to assist in identifying and locating sites.
- 4.2.2 Archaeological sites were recorded individually including using high-resolution digital photography where possible, while sketch survey drawings were produced where necessary. The individual site locations were plotted with a handheld GPS capable of sub-metre accuracy using ArcPad GIS software on a handheld Windows Mobile-based rover. Details relating to the sites can be found in the Gazetteer of Archaeological Sites in Appendix 1.
- 4.2.3 Survey and recording methods from the Royal Commission on the Ancient and Historical Monuments of Scotland (RCAHMS)<sup>4</sup> were employed and all work was conducted in strict

---

<sup>3</sup> Richards 2000, 88; 169

<sup>4</sup> RCAHMS 2004

adherence to the *Institute for Archaeologists' (IfA) Code of Conduct*<sup>5</sup> and the Highland Council's *Standards for Archaeological Work*<sup>6</sup>.

## 5. Results

### 5.1 Desk-based assessment

A desk-based assessment was carried out in advance of the walkover survey in order to assess the archaeological potential of the area based on previously recorded sites and any historical documentation.

#### 5.1.1 Historical mapping

Historical maps, unless otherwise stated, were consulted using the National Library of Scotland's online collection<sup>7</sup>.

##### 5.1.1.1 Roy's Military Survey of Scotland 1747-54

This is the earliest map to show the area in any detail, which shows a scattering of settlement outwith the survey area.

##### 5.1.1.2 Ordnance Survey Six-inch to the mile map 1<sup>st</sup> edition (Ross-shire and Cromartyshire (Mainland), Sheet LXV, surveyed 1874-5 and Sheets LXIV, LIII and LII, surveyed 1875)

The 1st edition Ordnance Survey mapping depicts an unroofed building at *Tighcruinneachaidh* to the north of *Balnard* along with a small field system and tracks running into the boggy hinterland.

##### 5.1.1.3 Ordnance Survey Six-inch to the mile map 2<sup>nd</sup> edition (Ross and Cromarty Sheets LII and LXIV, both revised 1902 and Sheets LII and LXV.NW, both revised 1904)

The 2<sup>nd</sup> edition mapping again depicts an unroofed building at *Tighcruinneachaidh* to the north of *Balnard* along with a small field system and tracks running into the boggy hinterland.

##### 5.1.1.4 Ordnance Survey 1:25000 Map Revised 2007

The unroofed building at *Tighcruinneachaidh* is shown. Additionally, four sets of grouse butts are depicted: two at Torr Dearg, one at Cnoc Ceislein and one at Coire Mor. A hut circle is shown on the edge of the survey area at Ardoch.

### 5.1.2 Highland Council Historic Environment Record (HHER)

The Highland Historic Environment Record was consulted online<sup>8</sup> and the following sites were recorded in the survey area:

---

<sup>5</sup> IfA 2009

<sup>6</sup> Highland Council 2012

<sup>7</sup> NLS 2012

<sup>8</sup> Highland HER 2013

**MHG 28205                      Cnoc a' Leacachan                      NH 57600 72600**

The remains of three roundhouses and associated clearance cairns survive on the E side of Cnoc a' Leacachan, covering an area of about 2ha. The best-preserved is oval, 11 x 8m internally with a probable entrance to the SE.

**MHG 34246                      Balnarge                      NH 56400 69200**

This is recorded as a settlement site, but no details are given.

**MHG 20087                      Bog Buidhe                      NH 56540 69090**

This is a single unroofed building of two compartments as shown on the 1992 OS 1:10000 map.

**MHG 32226                      South of Achnagoul                      NH 58785 68563**

This is an unroofed building marked on the 1<sup>st</sup> edition OS map.

**MHG 7990                      Ardross                      NH 60000 70000**

This record refers to several small enclosures or remains of chambered cairns, although it is unclear as to where they are actually located. The suggestion is they are probably in the neighbourhood of Ardross.

**MHG 8010                      Ardoch                      NH 60970 72300**

In 1972 this site was described as a ruinous stone-walled hut visible as a platform measuring about 11m x 9.5m with traces of a stone wall around the north half. The south-west arc is mutilated by a track. The hut is crossed by a fence. To the south of the hut is an area of stone clearance heaps, probably from contemporary cultivation plots. There is also a smaller area of clearance heaps at NH 611 718.

**EHG 159                      Walkover Survey                      NH 57593 67640 (centroid)**

A walkover survey was conducted by the Centre for Field Archaeology, University of Edinburgh in 1994, which included a small part of the current survey area in the vicinity of Balnarge.

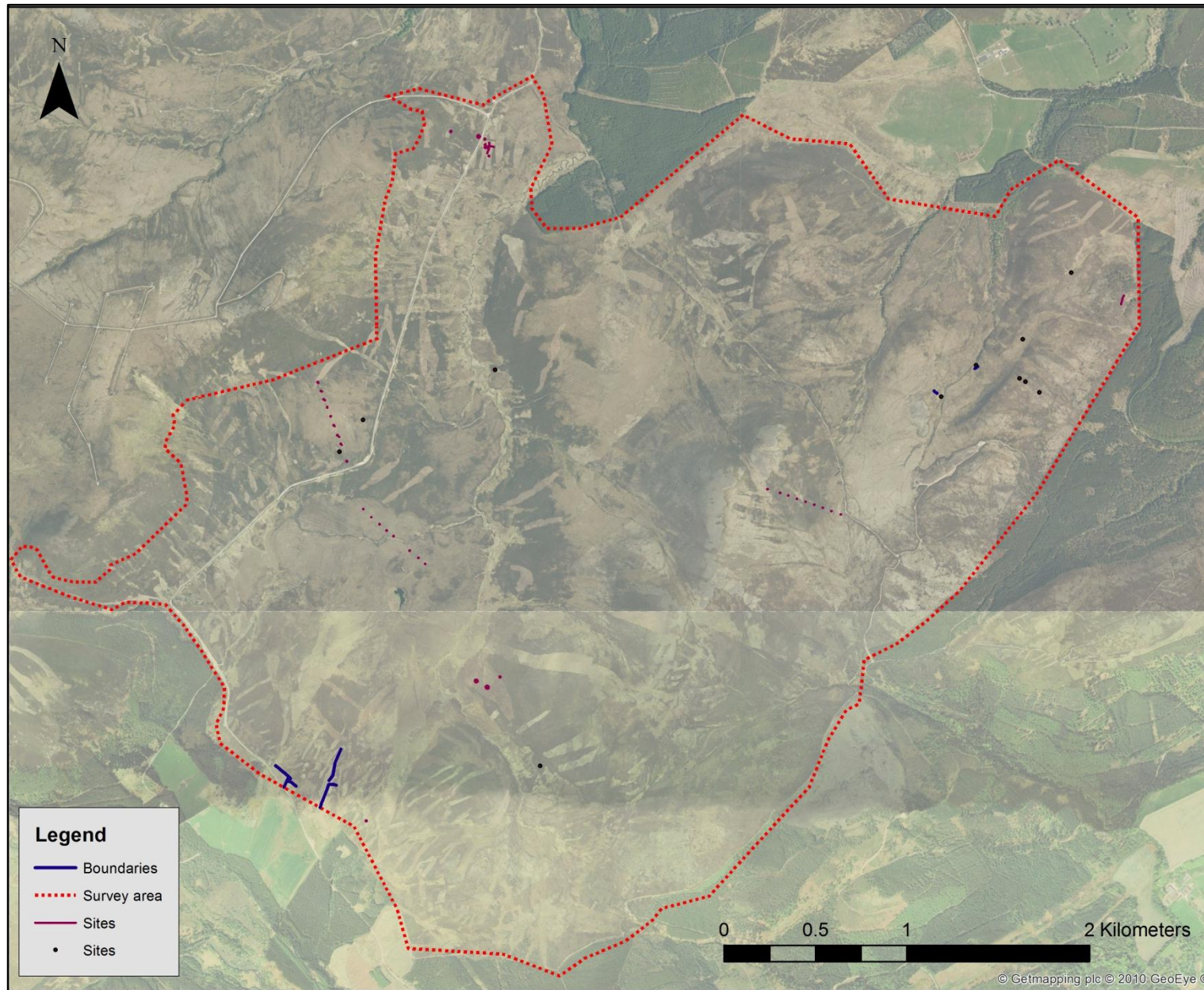
**EHG 704                      Novar Windfarm                      NH 57268 69339 (centroid)**

A detailed survey of the area adjacent to the abandoned settlements of Cnocan and Balnarge and a watching brief of the topsoil strip of the access road and site compound for Novar wind farm was conducted by Wordsworth Archaeological Services in 2002. Of interest are the survey of the croft at Balnarge and the recording of associated dykes (on the edge of the survey area) and the discovery of a prehistoric settlement on the lower slopes of Cnoc a'Leacachan (within the survey area). This comprises three roundhouses, one on the east side of the track and two on the west side, along with associated clearance cairns.

**EHG 1021                      Novar Wind Farm Extension                      NH 55346 71821**

An Environmental Impact Assessment was carried out by Glasgow University (GUARD) in 2003.





**Figure 2:** Location map showing the distribution of archaeological sites

## 5.2 Walkover Survey

The walkover survey identified two new hut circles and a small quarry and conducted a detailed survey of the previously recorded hut circle at Ballone and the boundary dykes at Balnarge. The shooting butts at Torr Dearg were also recorded (Figure 2). There were no other new sites identified during the survey; this was not surprising due to the high elevation of the ground surveyed and the deep, dense heather covering much of the survey area. The Gazetteer of Archaeological Sites (Appendix 1) provides details of the sites recorded during the survey.

### 5.2.1 Prehistoric sites

Two discrete areas of prehistoric activity were recorded. One of the previously recorded hut circles and associated field system identified by Jonathon Wordsworth at Ballone (Sites 2-4; Figure 3) were recorded in as much detail as the dense vegetation allowed. The hut circle sits on the west side of the wind farm access road on an east facing terrace at the base of Cnoc a' Leacachan and measures approximately 8m in diameter internally with a possible entrance on the south-east side (Plate 1). Short lengths of stone and turf dykes and several clearance cairns were identified on the east side of the road, which suggest a field system associated with the hut circles. Site 4a on the west side of the road appeared to be a small cairn, possibly clearance, but that interpretation is uncertain and it may be a natural mound. The remaining two hut circles were not located, although the surveyors identified an amorphous area contiguous to the east side of the road, which may be the hut circle truncated by the access road and excavated by Jonathon Wordsworth.

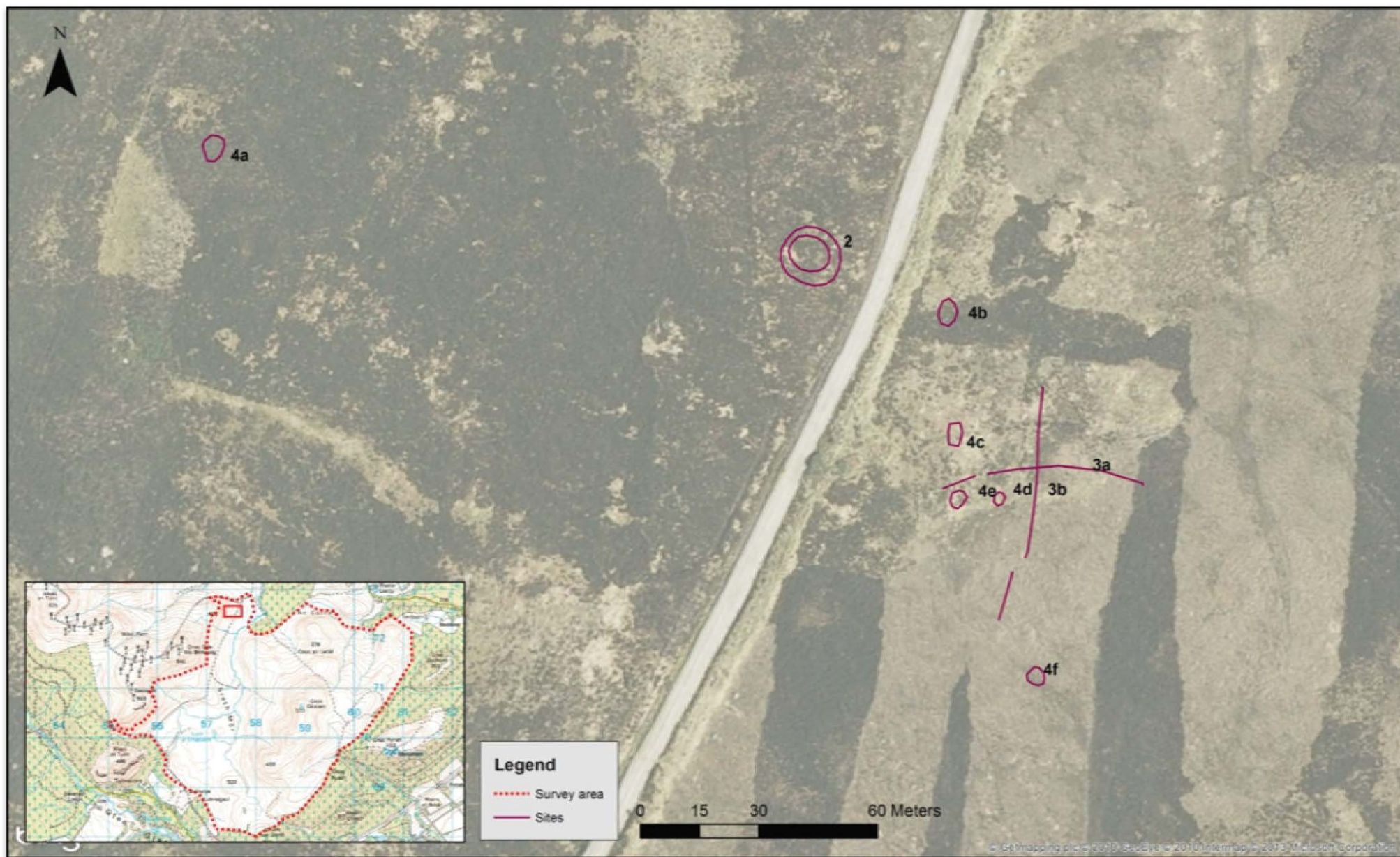
The second, and previously unrecorded, area of hut circles and possible mound (Sites 7-9) is located across the valley on a west facing terrace at the base of Druim Dubh Ruigh Bhomaich (Figure 4). Both hut circles measure approximately 9m in diameter internally. Site 8 has a small oval cell on the south-west side, but dense heather masks whether it is attached to, or separate from, the hut circle. Site 9 has a possible entrance on the south-southeast side. Site 7 was a heather-covered mound that had possible built up banks in places. There was no evidence of an associated field system.

### 5.2.2 Post-medieval sites

A smattering of post-medieval boundary dykes (Sites 14-20; Figures 4 and 5), a small quarry (Site 10; Figure 4) and the remnants of a track (Site 1; Figure 5) were recorded on the north-eastern and south-western edges of the survey area. Hints of turf banks (Sites 12 and 13; Figure 5) were also recorded in the vicinity of sites 14 and 15, but the much degraded nature of them made a conclusive interpretation difficult.

### 5.2.3 Sporting sites

Novar is a sporting estate and this is evidenced by the numerous shooting butts located in the survey area. Two stands of butts were recorded in detail: sites 5 and 6 (Figure 6). Site 11 (Figure 7) is detailed in the Gazetteer of Sites (Appendix 1), but these butts were not visited due to the dense fog during the first day of survey when that part of the survey area was visited. The shooting butts have been plotted from aerial imagery and the description based on other butts visited. A fourth set of butts is depicted on modern OS mapping at Coire Mor (Site 21, Figure 5), but these were also not visited due to the foggy conditions. The positive identification of only about three of these butts using aerial imagery suggests the majority are in a degraded state.



**Figure 3:** Location of sites 2-4, a hut circle and associated clearance cairns and boundary dykes



**Plate 1:** Site 2, hut circle



**Plate 2:** Site 8, hut circle

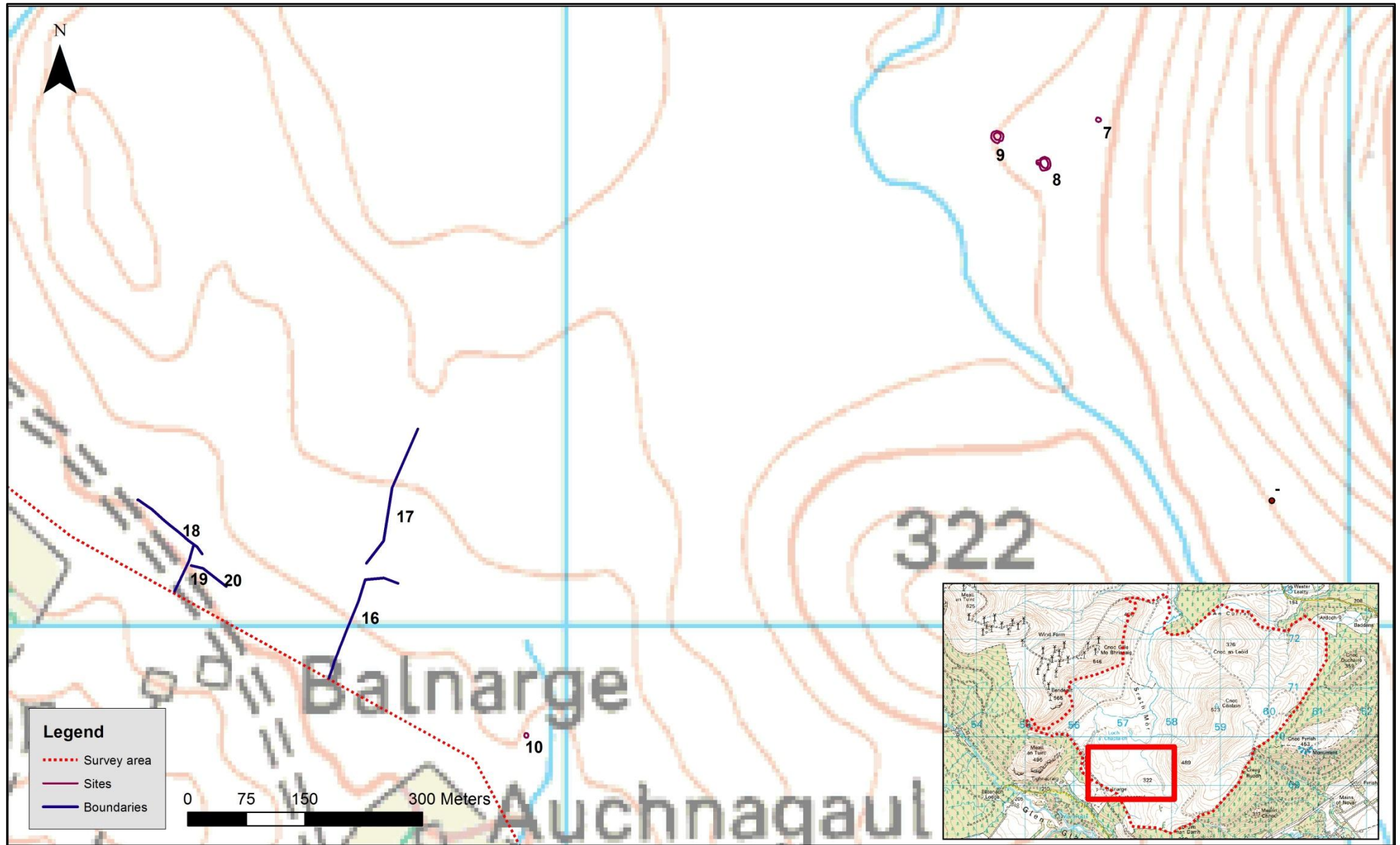


Figure 4: Location of sites 7-8 (hut circles and mound), site 10 (quarry) and sites 16-20 (boundary dykes)

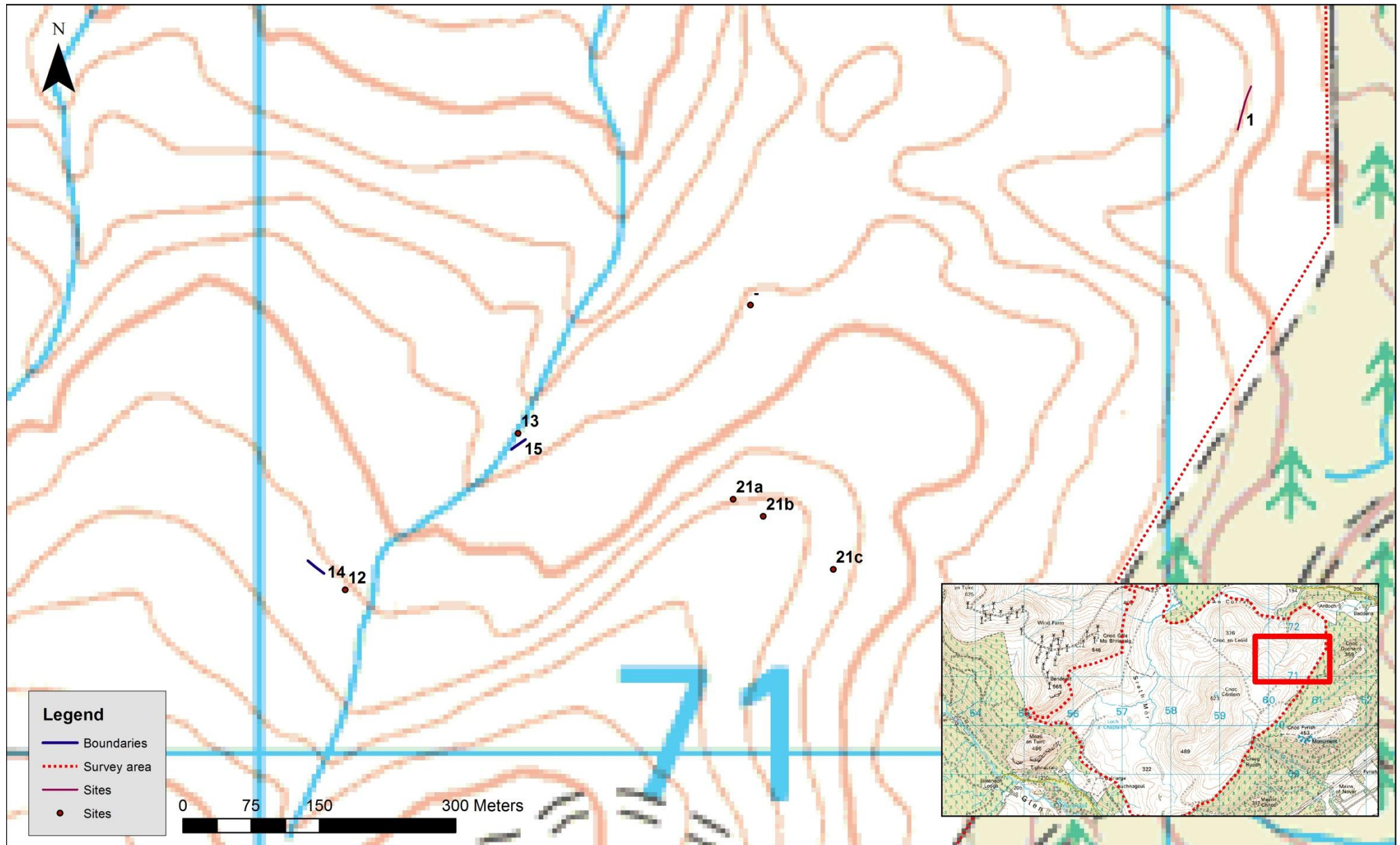


Figure 5: Location map of sites 1, 12-15 and 21

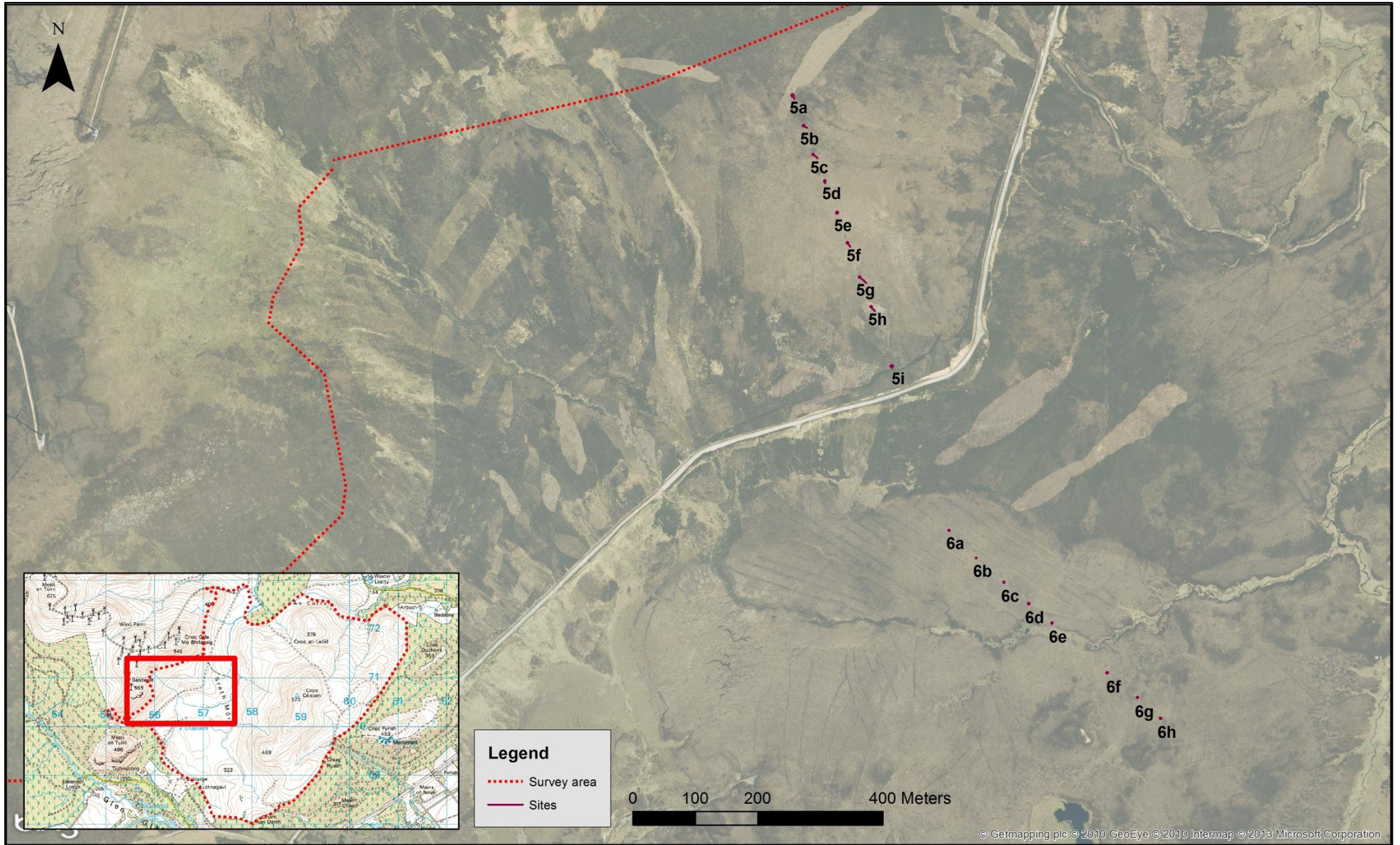


Figure 6: Location of the shooting butts, sites 5 and 6

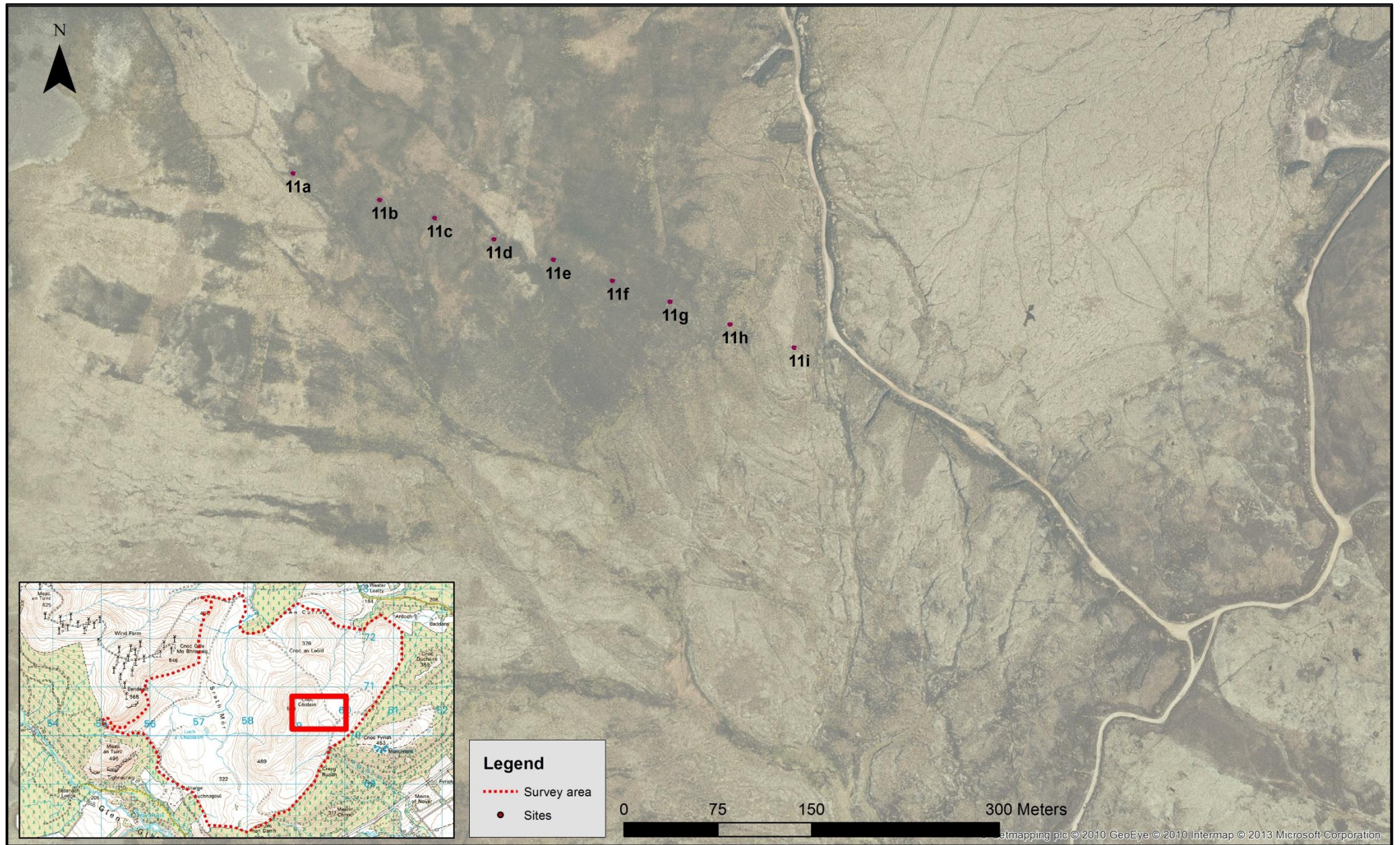


Figure 7: Location of shooting butts, site 11



## **6. Discussion**

- 6.1 The archaeological desk-based assessment and walkover survey of the proposed woodland creation area at Novar revealed that in general the area does not contain any previously unidentified archaeological sites. The only exceptions to this are the two new hut circles and mound (sites **7-9**) found at Druim Dubh Ruigh Bhonmaich and the stretches of Post Medieval turf banks and dykes (sites **12-20**).
- 6.2 The historical mapping indicated that there was no settlement within the survey area, other than beyond its periphery, and no evidence of settlement was found during the survey apart from the sections of dykes (sites **14-20**). The interpretation of sites **12** and **13** is inconclusive. This may be due to the use of the land as a sporting estate and the generally wet, boggy ground that covers much of the area.
- 6.3 The sporting history of Novar Estate is attested to by the four groups of shooting butts recorded through survey and the use of aerial imagery. The grouse butts are not shown on the 1<sup>st</sup> and 2<sup>nd</sup> edition OS maps, which indicates they post-date 1902.
- 6.4 The hut circle shown on the modern OS map at Ardoch and described by the HHER (MHG 8010) as a hut visible as a platform was not found.

## **7. Recommendations**

- 7.1 The following buffer zones should be retained around archaeological sites recorded during the walkover survey:
- A 10-metre buffer zone around the hut circles and a 5-metre buffer around the associated sites of clearance cairns, mounds and dykes. It is recommended that a generous buffer be given around the whole of each of the hut circle and associated cairns etc. to preserve the setting and structures as a whole.
  - A 5-metre buffer zone around the shooting butts
  - A 5-metre buffer zone around the Post Medieval boundary dykes.
- 7.2 Sites should be marked out with highly visible fencing or flags prior to planting of the new woodland. Self-set trees are a common occurrence in woodland planting and this should be taken into account during planting.
- 7.3 Access tracks for vehicles associated with the proposed developments should also respect the recommendations set out above.

## 8. References

Ash, M. 1991. *This Noble Harbour: A History of the Cromarty Firth*. Invergordon: Cromarty Firth Port Authority

BGS 2012 British Geological Survey accessed at <http://bgs.ac.uk>

Highland Council 2012 *Standards for Archaeological Work*, v.1  
<Http://www.highland.gov.uk/yourenvironment/conservation/archaeology/developmentguidance.htm>.

Highland Historic Environment Record (HER) 2013. Accessed at <http://her.highland.gov.uk>

Institute for Archaeologists, 2008. *Standards and guidance for archaeological desk-based assessment*. Reading: IfA.

Institute for Archaeologists (IfA) 2010. *By-laws of the Institute for Archaeologists: Code of Conduct*. Reading, IfA.

NLS 2012. National Library of Scotland. Accessed 16 April 2012 at <http://maps.nls.uk/>

Richards, E. 2000. *The Highland Clearances*. Edinburgh: Birlinn Ltd

Royal Commission on the Ancient and Historical Monuments of Scotland, 2004. *Corporate Plan 2004-9: Annex - Survey and Recording Policy* accessed at  
[http://www.rcahms.gov.uk/rcahms\\_media/files/foi/survey\\_and\\_recording\\_policy.pdf](http://www.rcahms.gov.uk/rcahms_media/files/foi/survey_and_recording_policy.pdf)

The Scottish Government 2010. *Scottish Planning Policy* accessed 19 March 2012 at  
<Http://www.scotland.gov.uk/Resource/Doc/300760/0093908.pdf>

**APPENDIX 1      Gazetteer of Archaeological Sites**

Site number	Site name	Site type	Description	Alignment	Condition	Period	Height OD	Easting	Northing	Photo number	HHER number
1	-	Track	A heather covered track approx 2.5m wide, which is cut into the hillside.	NNE-SSW	Very degraded	Post Medieval	310	261086	871705	-	-
2	Cnoc Gille Mo Bhrianaig	Hut circle	A heather covered hut circle with walls spread up to 2m and standing approx 0.3m high; some stone is visible on the E side. It measures about 8m in diameter internally and has a possible entrance on the SE.	-	Very degraded	Prehistoric	280	257572	872602	41429	EHG 704 MHG 28205
2	Cnoc Gille Mo Bhrianaig	Hut circle	A heather covered hut circle with walls spread up to 2m and standing approx 0.3m high; some stone is visible on the E side. It measures about 8m in diameter internally and has a possible entrance on the SE.	-	Very degraded	Prehistoric	280	257569	872602	41429	EHG 704 MHG 28205
3a	Cnoc Gille Mo Bhrianaig	Dyke	A heather and moss covered stone and turf dyke spread up to 1.5m in width and standing up to 0.3m high. Some stone is visible.	E-W	Very degraded	Unknown	275	257630	872546	-	EHG 704 MHG 28205
3a	Cnoc Gille Mo Bhrianaig	Dyke	A heather and moss covered stone and turf dyke spread up to 1.5m in width and standing up to 0.3m high. Some stone is visible.	-	Very degraded	Unknown	275	257603	872542	-	EHG 704 MHG 28205
3b	Cnoc Gille Mo Bhrianaig	Dyke	A heather and moss covered stone and turf dyke spread up to 1.5m in width and standing up to 0.3m high. Some stone is visible.	N-S	Very degraded	Unknown	275	257623	872544	-	EHG 704 MHG 28205

NVR13 – Novar Estate Woodland Creation Scheme: Archaeological Walkover Survey

Site number	Site name	Site type	Description	Alignment	Condition	Period	Height OD	Easting	Northing	Photo number	HHER number
3b	Cnoc Gille Mo Bhrianaig	Dyke	A heather and moss covered stone and turf dyke spread up to 1.5m in width and standing up to 0.3m high. Some stone is visible.	-	Very degraded	Unknown	275	257615	872513	-	EHG 704 MHG 28205
4a	Cnoc Gille Mo Bhrianaig	Mound	A heather and moss covered mound, which is a possible clearance cairn.	-	Very degraded	Prehistoric	280	257416	872625	-	EHG 704 MHG 28205
4b	Cnoc Gille Mo Bhrianaig	Cairn	A heather and moss covered mound measuring 4m in diameter and up to 0.8m high. There is some stone visible.	-	Very degraded	Prehistoric	275	257602	872584	-	EHG 704 MHG 28205
4c	Cnoc Gille Mo Bhrianaig	Cairn	A heather and moss covered mound measuring 4m in diameter and up to 0.8m high. There is some stone visible.	-	Very degraded	Prehistoric	275	257601	872551	-	EHG 704 MHG 28205
4d	Cnoc Gille Mo Bhrianaig	Cairn	A heather and moss covered clearance cairn approx 3-4m in diameter. Stands between 0.25-0.4m high.	-	Very degraded	Unknown	275	257614	872539	-	EHG 704 MHG 28205
4e	Cnoc Gille Mo Bhrianaig	Cairn	A heather and moss covered clearance cairn approx 1-2m in diameter.	-	Very degraded	Unknown	275	257605	872538	-	EHG 704 MHG 28205
4f	Cnoc Gille Mo Bhrianaig	Cairn	A heather and moss covered clearance cairn approx 3-4m in diameter. Stands between 0.25-0.4m high.	-	Very degraded	Unknown	275	257621	872494	-	-
5a	Cnoc Gille Mo Bhrianaig	Shooting butt	A heather and moss covered shooting butt dug into the peat. It measures approx 2m long internally and the internal walls stand between 0.25m and 0.75m	NNW-SSE	Degraded	Post Medieval	370	256684	871257	7	-

NVR13 – Novar Estate Woodland Creation Scheme: Archaeological Walkover Survey

Site number	Site name	Site type	Description	Alignment	Condition	Period	Height OD	Easting	Northing	Photo number	HHER number
5a	Cnoc Gille Mo Bhrianaig	Shooting butt ditch	A heather and moss covered ditch running from the interior of the shooting butt. Approx 0.75m wide.	NW-SE	Degraded	Post Medieval	275	256688	871252	7	-
5b	Cnoc Gille Mo Bhrianaig	Shooting butt	A heather and moss covered shooting butt dug into the peat. It measures approx 1.5m long internally and the internal walls stand to 0.5m high.	NW-SE	Degraded	Post Medieval	275	256702	871208	-	-
5b	Cnoc Gille Mo Bhrianaig	Shooting butt ditch	A heather and moss covered ditch running from the interior of the shooting butt. Approx 4-5m long.	NW-SE	Degraded	Post Medieval	375	256707	871205	-	-
5c	Cnoc Gille Mo Bhrianaig	Shooting butt	A heather and moss covered, horse-shoe shaped shooting butt dug into the peat. It measures approx 1m long internally and the internal walls stand to 1.25m high. Externally it stands between 0.25m and 0.5m.	NW-SE	Degraded	Post Medieval	375	256718	871162	8	-
5c	Cnoc Gille Mo Bhrianaig	Shooting butt ditch	A heather and moss covered ditch running from the interior of the shooting butt. Approx 4-5m long.	NW-SE	Degraded	Post Medieval	360	256723	871158	8	-
5d	Cnoc Gille Mo Bhrianaig	Shooting butt	A heather and moss covered, degraded shooting butt dug into the peat. It measures approx 2m long internally and the internal walls stand to 0.75m high. The walls are eroded on the N and E sides.	NW-SE	Degraded	Post Medieval	355	256737	871120	-	-

NVR13 – Novar Estate Woodland Creation Scheme: Archaeological Walkover Survey

Site number	Site name	Site type	Description	Alignment	Condition	Period	Height OD	Easting	Northing	Photo number	HHER number
5d	Cnoc Gille Mo Bhrianaig	Shooting butt ditch	A heather and moss covered narrow ditch running from the interior of the shooting butt. Approx 2m long.	NW-SE	Degraded	Post Medieval	355	256738	871116	-	-
5e	Cnoc Gille Mo Bhrianaig	Shooting butt	A heather and moss covered, horseshoe-shaped shooting butt dug into the peat. It measures approx 1.70m x 2m internally and the internal walls stand to 0.9m high. The external walls stand to 0.7m high.	NW-SE	Degraded	Post Medieval	355	256756	871070	41588	-
5f	Cnoc Gille Mo Bhrianaig	Shooting butt	A heather and moss covered, horseshoe-shaped shooting butt dug into the peat. It measures approx 1.20m x 1.70m internally and the internal walls stand to 1.2m high. The external walls stand to 0.5m high and are spread to 1m on the NNW side.	NW-SE	Degraded	Post Medieval	355	256773	871021	10, 12	-
5f	Cnoc Gille Mo Bhrianaig	Shooting butt ditch	A heather and moss covered long, narrow ditch running from the interior of the shooting butt.	NW-SE	Degraded	Post Medieval	355	256776	871016	12	-
5g	Cnoc Gille Mo Bhrianaig	Shooting butt	A heather and moss covered, horseshoe-shaped shooting butt dug into the peat. It measures approx 1.5m in diameter internally and the internal walls stand to 1.3m high. The external walls stand to 0.5m high.	NW-SE	Degraded	Post Medieval	355	256792	870966	-	-

NVR13 – Novar Estate Woodland Creation Scheme: Archaeological Walkover Survey

Site number	Site name	Site type	Description	Alignment	Condition	Period	Height OD	Easting	Northing	Photo number	HHER number
5g	Cnoc Gille Mo Bhrianaig	Shooting butt ditch	A heather and moss covered long, narrow ditch running from the interior of the shooting butt.	NW-SE	Degraded	Post Medieval	355	256799	870960	-	-
5h	Cnoc Gille Mo Bhrianaig	Shooting butt	A heather and moss covered, horseshoe-shaped shooting butt dug into the peat. It measures approx 1m in diameter internally and the internal walls stand to 1.75m high. The external walls stand to 0.5m high and spread to approx 1m.	NW-SE	Degraded	Post Medieval	355	256811	870919	-	-
5h	Cnoc Gille Mo Bhrianaig	Shooting butt ditch	A heather and moss covered long, narrow ditch running from the interior of the shooting butt.	NW-SE	Degraded	Post Medieval	355	256814	870914	-	-
5i	Cnoc Gille Mo Bhrianaig	Shooting butt	A heather and moss covered, horseshoe-shaped shooting butt dug into the peat. It measures approx 1m in diameter internally and the internal walls stand to 1.75m high. The external walls stand to 0.5m high and spread to approx 1m.	NW-SE	Degraded	Post Medieval	335	256844	870825	-	-
5i	Cnoc Gille Mo Bhrianaig	Shooting butt ditch	A heather and moss covered long, narrow ditch running from the interior of the shooting butt.	NW-SE	Degraded	Post Medieval	355	256845	870821	-	-
6a	Strath Mor	Shooting butt	A heather and moss covered, degraded shooting butt dug into the peat. It stands between 0.5m and 0.75m high externally.	NW-SE	Degraded	Post Medieval	290	256936	870562	-	-

NVR13 – Novar Estate Woodland Creation Scheme: Archaeological Walkover Survey

Site number	Site name	Site type	Description	Alignment	Condition	Period	Height OD	Easting	Northing	Photo number	HHER number
6b	Strath Mor	Shooting butt	A heather and moss covered, degraded shooting butt dug into the peat. It stands between 0.5m and 0.75m high externally.	NW-SE	Degraded	Post Medieval	290	256979	870517	-	-
6c	Strath Mor	Shooting butt	A heather and moss covered, degraded shooting butt dug into the peat. It stands between 0.5m and 0.75m high externally.	NW-SE	Degraded	Post Medieval	290	257023	870477	-	-
6d	Strath Mor	Shooting butt	A heather and moss covered, degraded shooting butt dug into the peat. It stands between 0.5m and 0.75m high externally.	NW-SE	Degraded	Post Medieval	290	257062	870443	17	-
6e	Strath Mor	Shooting butt	A heather and moss covered, degraded shooting butt dug into the peat. It stands between 0.5m and 0.75m high externally.	NW-SE	Degraded	Post Medieval	290	257099	870413	-	-
6f	Strath Mor	Shooting butt	A heather and moss covered, degraded shooting butt dug into the peat. It stands between 0.5m and 0.75m high externally.	NW-SE	Degraded	Post Medieval	290	257188	870332	-	-
6g	Strath Mor	Shooting butt	A heather and moss covered, degraded shooting butt dug into the peat. It stands between 0.5m and 0.75m high externally.	NW-SE	Degraded	Post Medieval	290	257237	870293	-	-
6g	Strath Mor	Shooting butt	A heather and moss covered, degraded shooting butt dug into the peat. It stands between 0.5m and 0.75m high externally.	NW-SE	Degraded	Post Medieval	290	257236	870293	-	-



NVR13 – Novar Estate Woodland Creation Scheme: Archaeological Walkover Survey

Site number	Site name	Site type	Description	Alignment	Condition	Period	Height OD	Easting	Northing	Photo number	HHER number
6h	Strath Mor	Shooting butt	A heather and moss covered, degraded shooting butt dug into the peat. It stands between 0.5m and 0.75m high externally.	NW-SE	Degraded	Post Medieval	290	257274	870260	-	-
7	Strath Mor	Mound	A heather covered mound measuring 5.5m NW x 4.5m SE. There is ditching to the NW and SE with a possible built up bank in places.	NW-SE	Very degraded	Unknown	305	257686	869643	-	-
8	Strath Mor	Hut circle	A heather covered hut circle measuring approx 9m in diameter internally. The walls are about 2m wide with a 2.5m spread and stand to 0.25m high. A small oval cell about 2m in diameter lies on the W side.	NW-SE	Very degraded	Prehistoric	305	257621	869584	23-25	-
9	Strath Mor	Hut circle	A heather covered hut circle measuring approx 9m in diameter internally. The walls are about 2m wide with a 2.5m spread and stand to 0.3m high. There is a possible entrance on the SSE side.	-	Very degraded	Prehistoric	305	257548	869615	26	-
10	Balnarge	Quarry	A small quarry cut into a bank.	-	Very degraded	Post Medieval	265	256953	868858	27	-
11b	Cnoc Ceislein	Shooting butt	A heather and moss covered, degraded shooting butt dug into the peat. It stands between 0.5m and 0.75m high externally.	-	Degraded	Post Medieval	-	259214	870650	-	-

NVR13 – Novar Estate Woodland Creation Scheme: Archaeological Walkover Survey

Site number	Site name	Site type	Description	Alignment	Condition	Period	Height OD	Easting	Northing	Photo number	HHER number
11a	Cnoc Ceislein	Shooting butt	A heather and moss covered, degraded shooting butt dug into the peat. It stands between 0.5m and 0.75m high externally.	-	Degraded	Post Medieval	-	259145	870671	-	-
11d	Cnoc Ceislein	Shooting butt	A heather and moss covered, degraded shooting butt dug into the peat. It stands between 0.5m and 0.75m high externally.	-	Degraded	Post Medieval	-	259306	870618	-	-
12	-	-	Hints of turf banks on SW side of burn - no structure visible	-	Very degraded	Post Medieval	360	260098	871175	-	-
13	-	-	Hints of turf banks on SW side of burn - no structure visible	-	Very degraded	Post Medieval	360	260288	871347	-	-
14	-	Dyke	A moss, grass and rushes-covered turf dyke 0.5m wide and standing up to 0.5m high.	-	Vvdeg-uncertain	Post Medieval	360	260065	871200	-	-
15	-	Dyke	A moss, grass and rushes-covered turf dyke 0.5m wide and standing up to 0.5m high.	-	Vvdeg-uncertain	Post Medieval	-	260288	871335	-	-
16	Balnarge	Dyke	A grass and gorse-covered turf and stone dyke standing up to 0.9m high with a 1m spread.	-	Vvdeg-uncertain	Post Medieval	-	256731	869012	-	EHG 704 MHG 34246
17	Balnarge	Dyke	A grass and gorse-covered turf and stone dyke standing up to 0.9m high with a 1m spread.	-	Vvdeg-uncertain	Post Medieval	-	256778	869161	-	EHG 704 MHG 34246
18	Balnarge	Dyke	A grass and gorse-covered turf and stone dyke standing up to 0.9m high with a 1m spread.	-	Vvdeg-uncertain	Post Medieval	-	256497	869123	-	EHG 704 MHG 34246

NVR13 – Novar Estate Woodland Creation Scheme: Archaeological Walkover Survey

Site number	Site name	Site type	Description	Alignment	Condition	Period	Height OD	Easting	Northing	Photo number	HHER number
19	Balnarge	Dyke	A grass and gorse-covered turf and stone dyke standing up to 0.9m high with a 1m spread.	-	Vvdeg-uncertain	Post Medieval	-	256516	869069	-	EHG 704 MHG 34246
20	Balnarge	Dyke	A grass and gorse-covered turf and stone dyke standing up to 0.9m high with a 1m spread.	-	Vvdeg-uncertain	Post Medieval	-	256547	869062	-	EHG 704 MHG 34246
21a	Coire Mor	Shooting butt	Recorded from aerial imagery	-	Unknown	Post Medieval		260525	871275	-	
21b	Coire Mor	Shooting butt	Recorded from aerial imagery	-	Unknown	Post Medieval		260558	871256	-	
21c	Coire Mor	Shooting butt	Recorded from aerial imagery	-	Unknown	Post Medieval		260635	871198	-	

**APPENDIX 2          Index of Photographs**

<b>Index of Photographs</b>					
<b>No.</b>	<b>Direction Facing</b>	<b>Site No.</b>	<b>Notes</b>	<b>Taken By</b>	<b>Date</b>
1			General shot of survey area	MKP	17/12/2012
2			General shot of survey area	MKP	17/12/2012
3			General shot of survey area	MKP	17/12/2012
4	NE	2	General shot from above of the hut circle	MKP	11/01/2013
5	E	2	General shot from above of the hut circle	MKP	11/01/2013
6	E	2	General shot from above of the hut circle	MKP	11/01/2013
7	N	5a	Showing ditch running into the shooting butt	MKP	11/01/2013
8	NNW	5c	Shooting butt and ditch	MKP	11/01/2013
9	SE		General shot looking down the length of the butts	MKP	11/01/2013
10	SE	5e, 5f	General shot looking down the length of the butts	MKP	11/01/2013
11	NW	5e	Shooting butt	MKP	11/01/2013
12	NW	5f	Shooting butt and ditch	MKP	11/01/2013
13			General shot of survey area	MKP	11/01/2013
14			General shot of survey area	LF	11/01/2013
15			General shot of survey area	LF	11/01/2013
16			General shot of survey area	LF	11/01/2013
17	NW	6d	Degraded shooting butts; 6d in the foreground	LF	11/01/2013
18			General shot of survey area	LF	11/01/2013
19			General shot of survey area	MKP	11/01/2013
20			General shot of survey area	MKP	11/01/2013
21			General shot of survey area	MKP	11/01/2013
22			General shot of survey area	MKP	11/01/2013
23	SSW	8	View of the hut circle	LF	14/01/2013
24	SSW	8	View of the hut circle	LF	14/01/2013
25	NNW	8	View of the hut circle	LF	14/01/2013
26	NW	9	View of the hut circle	LF	14/01/2013
27			Shot of the quarry	LF	14/01/2013