

Archaeological Recording at  
St Peter's Church,  
Charles Street, Coventry



Report 0803

January 2008

# Archaeological Recording at St Peter's Church, Charles Street, Coventry

## **Contents**

- Summary
- 1. Introduction
- 2. Location
- 3. Aims and Methods
- 4. Archaeological and Historical Background
- 5. Observation of Groundworks
- 6. Building Recording
- 7. Conclusions

Acknowledgements

Bibliography

Appendix A: List of Contexts

Appendix B: Listed Building schedule

Appendix C: Gravestones recorded

Report 0803  
January 2008

Warwickshire Museum Field Services  
The Butts  
Warwick  
CV34 4SS

## List of Figures

Cover: St Peter's Church, 1866

- Fig. 1: Site location and areas and trenches observed
- Fig. 2: Detail from Murphy and Wood map of 1837
- Fig. 3: Detail from Ordnance Survey map of 1888
- Fig. 4: Plan of features in Trenches 1A and 1B
- Fig. 5: Trench 1A looking south
- Fig. 6: Trench 1A looking north
- Fig. 7: Trench 1A vaults 102 and 103
- Fig. 8: Trench 1B looking south
- Fig. 9: Trench 1B vault 115
- Fig. 10: Trench 1E looking south-east
- Fig. 11: Trench 2 vault 207
- Fig. 12: Trench 3 looking west
- Fig. 13: Trench 3 drains 305 and 307
- Fig. 14: Top of wall 402 and vault roof 412
- Fig. 15: Inscribed grave slab in floor of vault
- Fig. 16: Plans and elevation of Thornhill vault
- Fig. 17: Lead coffin burial of Charles Thornhill
- Fig. 18: Coffin plate of Charles Thornhill
- Fig. 19: Upper wooden coffin 409
- Fig. 20: Entrance to vault
- Fig. 21: West and east elevations
- Fig. 22: South elevation
- Fig. 23: North elevation
- Fig. 24: View of church looking south-west
- Fig. 25: East window
- Fig. 26: West end of church
- Fig. 27: Tower
- Fig. 28: Main doorway
- Fig. 29: Vestry window
- Fig. 30: Southern ante room
- Fig. 31: Northern ante room
- Fig. 32: Small window on north side of church
- Fig. 33: Window sill
- Fig. 34: Moulded brick string course
- Fig. 35: Sanctuary
- Fig. 36: Altar rails
- Fig. 37: Roof timbers
- Fig. 38: Corbels supporting roof timbers
- Fig. 39: View west to gallery
- Fig. 40: Side view of organ
- Fig. 41: Columns supporting gallery
- Fig. 42: Stairs to gallery
- Fig. 43: Font and arch to porch
- Fig. 44: Pulpit and wooden vestry screen
- Fig. 45: End of pew
- Fig. 46: View of WWI memorial at south-east end of nave
- Fig. 47: Stained glass window

## **Summary**

Prior to the conversion of the mid-19th-century St Peter's Church to a series of apartments, a programme of photographic building recording was carried out. Archaeological observation of groundworks associated with the redevelopment of the church recorded evidence for a series of brick-built burial vaults within the churchyard. One large vault was recorded, which belonged to the family of the third incumbent of the Church, a Reverend Charles Thornhill. Only a small amount of skeletal material was recorded and this was reinterred in the burial vault from which it came. The graveyard area had been considerably disturbed during removal of gravestones from their original positions in the cemetery to the periphery of the site in the 1970s, and it is possible that the majority of inhumations survive at a much greater depth than that of the groundworks of the current development. A programme of recording the gravestones that had to be moved from the periphery of the churchyard was also carried out.

## **1. Introduction**

1.1 Planning permission has been granted for the conversion of St Peter's Church, Charles Street, Coventry, into apartments (Planning Ref. 50768). St Peter's Church is a Grade II Listed Building (Coventry Historic Environment Records Number MCT 10131, DCT124, DCT383) and one of a few mid 19th-century buildings surviving in Hillfields. Hillfields was itself the first new area of development outside the walls of the medieval city. Because of the history of the site it was a condition of planning permission that a programme of archaeological work be carried out before, and in conjunction with, the development. The work was to consist of building recording of the existing church and salvage recording during groundworks associated with the development.

1.2 A programme of fieldwork, in accordance with a Brief of September 2006 prepared by the Planning Archaeologist on behalf of the Planning Authority, was commissioned from Warwickshire Museum Field Archaeology Projects Group and carried out in November-December 2006 and August-September 2007. This report presents the results of that work. The project archive will be stored at the Herbert Museum and Art Gallery under the site code SPC06.

## **2. Location**

2.1 St Peter's Church occupies land between Charles Street, Canterbury Street, Vine Street and Gazelle Close in the Hillfields area of Coventry, centred around national grid reference SP 34070 79508 (Fig. 1).

2.2 The underlying geology of the site is Kerseley (sandstone) member of the Meriden formation (British Geological Survey 1994).

## **3. Aims and Methods**

3.1 The work undertaken involved the examination of historical and early map evidence as well as any aerial photographs, records of archaeological remains in the area and local historical journals and other publications.

3.2 The aim of the building recording was to provide a photographic record of the church, externally and internally, prior to any conversion work.

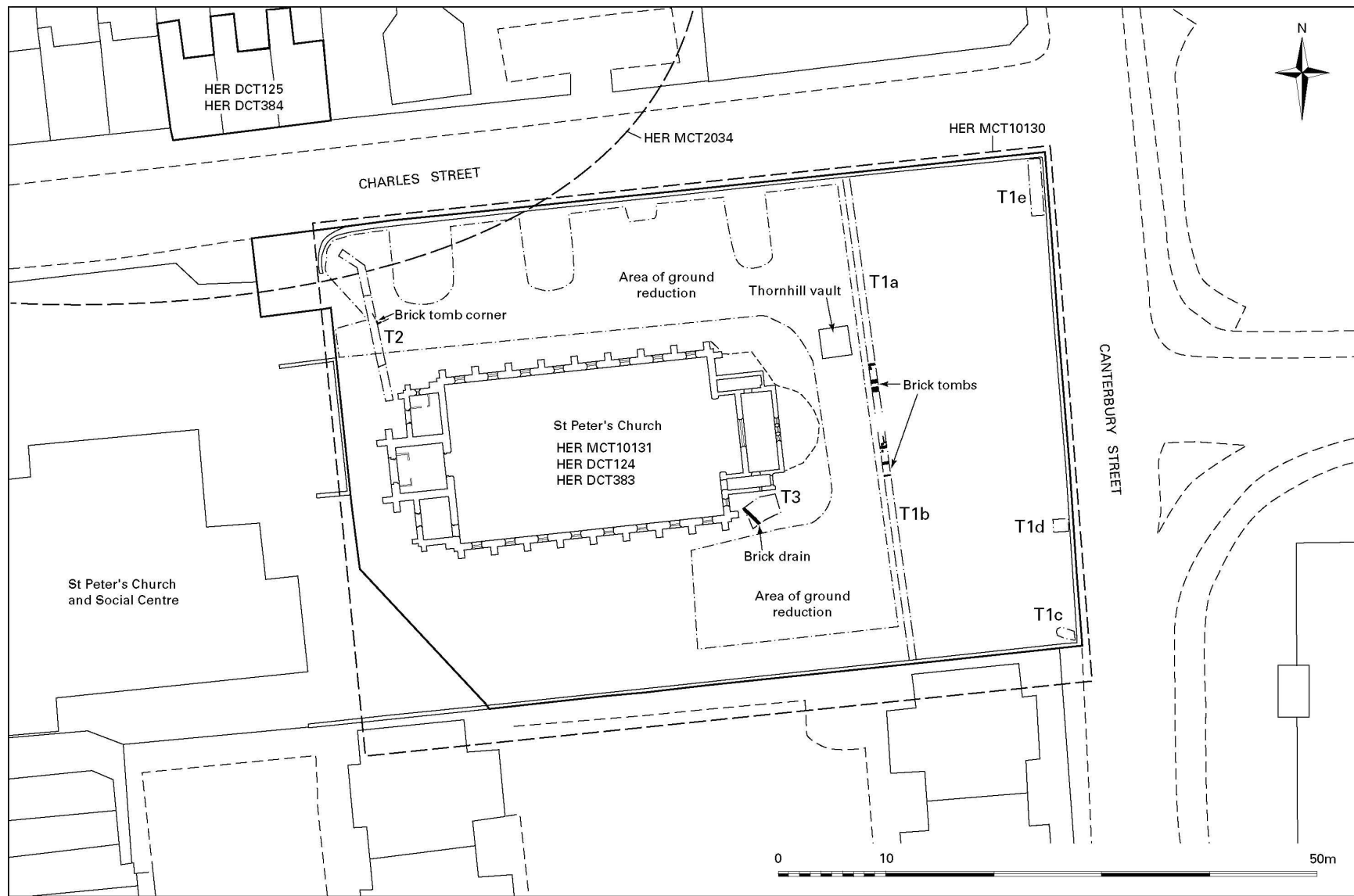


Fig. 1: Site location and areas and trenches observed

3.3 Fieldwork carried out during the initial stages of the development was designed to discover the date, nature and state of preservation of any archaeological deposits disturbed by the removal of gravestones from the periphery of the site, the excavation of a trench cut to take repositioned gravestones to the east of the church, the excavation of the foundations for a new fire escape and the excavation of a trench cut to house services for the new apartments.

3.4 Further fieldwork was carried out in August-September 2007 during groundworks associated with car parking and landscaping around the building in order to record any further archaeological remains disturbed during groundworks.

#### **4. Archaeological and Historical Background**

4.1 The site of the church lay immediately to the south-east of an area of what was woodland in the Anglo-Saxon period (HER MCT2034, Fig. 1).

4.2 In the medieval period the area of what is today Hillfields lay to the north-east of the circuit of Coventry city walls. Hillfields formed part of Harnall, itself a district of the parish of Holy Trinity (VCH 1969 71). In medieval times Hillfields lay slightly to the east of the settlement of Potters Harnall, the centre of the pottery industry until the 15th century, which itself lay close to the small lake of Swanswell Pool. The area, which would have belonged to the Benedictine Hospital of St John, was probably agricultural land at this time and is likely to have fed stock for the Coventry market as did many of the fields around the city. The estate belonging to St John's Hospital consisted of a mansion or grange, thirteen fields and Harnall or Swanswell Pool. The site of the manor house (the mansion) belonging to the hospital is thought to lie in the vicinity of Swanswell Pool. After the dissolution the St John's Hospital estate was granted to John Hales whose descendants sold it to the Norton family in the early 17th century (VCH 1969, 72).

4.3 The land remained undeveloped until the Hillfields area became the centre of a New Town from around 1828 (VCH 1969, 10). The initial development consisted of the laying out of eight streets to the east of Swanswell Pool with further housing being added to the east on land bought in 1850. This was the first new development outside the walls of the medieval city and the new town, whose layout is shown on a map of 1837 (Murphy and Wood 1837; Fig. 2), became a centre of the ribbon-making industry for which the city was famous (VCH 1969, 72). In the early part of the 19th century there was a tariff on imported ribbons (particularly French) which led to the preservation of small-scale weaving in the area, and resulted in only limited development of the factory system (VCH 1969, 169). In the later 19th century the ribbon-making industry declined in the area following the abolition of the tariff in 1860 (VCH 1969, 170).

4.4 St Peter's Church (HER MCT10131, DCT124, DCT383), one of the first 'modern' churches in Coventry, was built in 1840-41 to serve the new community of Hillfields (VCH 1969 73). The architect was Robert Ebbels who was responsible for numerous churches of mid-19th century date in the West Midlands and further afield. It is constructed of brick in the Victorian Gothic style, with tall lancet windows in the nave and a more elaborate perpendicular window at the east end. The brick tower is also in the perpendicular style and was originally constructed with Gothic crocketed pinnacles above the crenellations; these no longer exist and may have been destroyed during WWII (see Appendix B). It is surrounded by a graveyard (HER MCT10130), laid out at the time of construction. In the 19th century the church was criticised for its brick construction and its want of architectural character. The church is noted as being 'the church of St Peter's District in the Parish of Holy Trinity' in 1841 (WCRO St Peter's Church burial register) but a separate parish of St Peter's, consisting of the

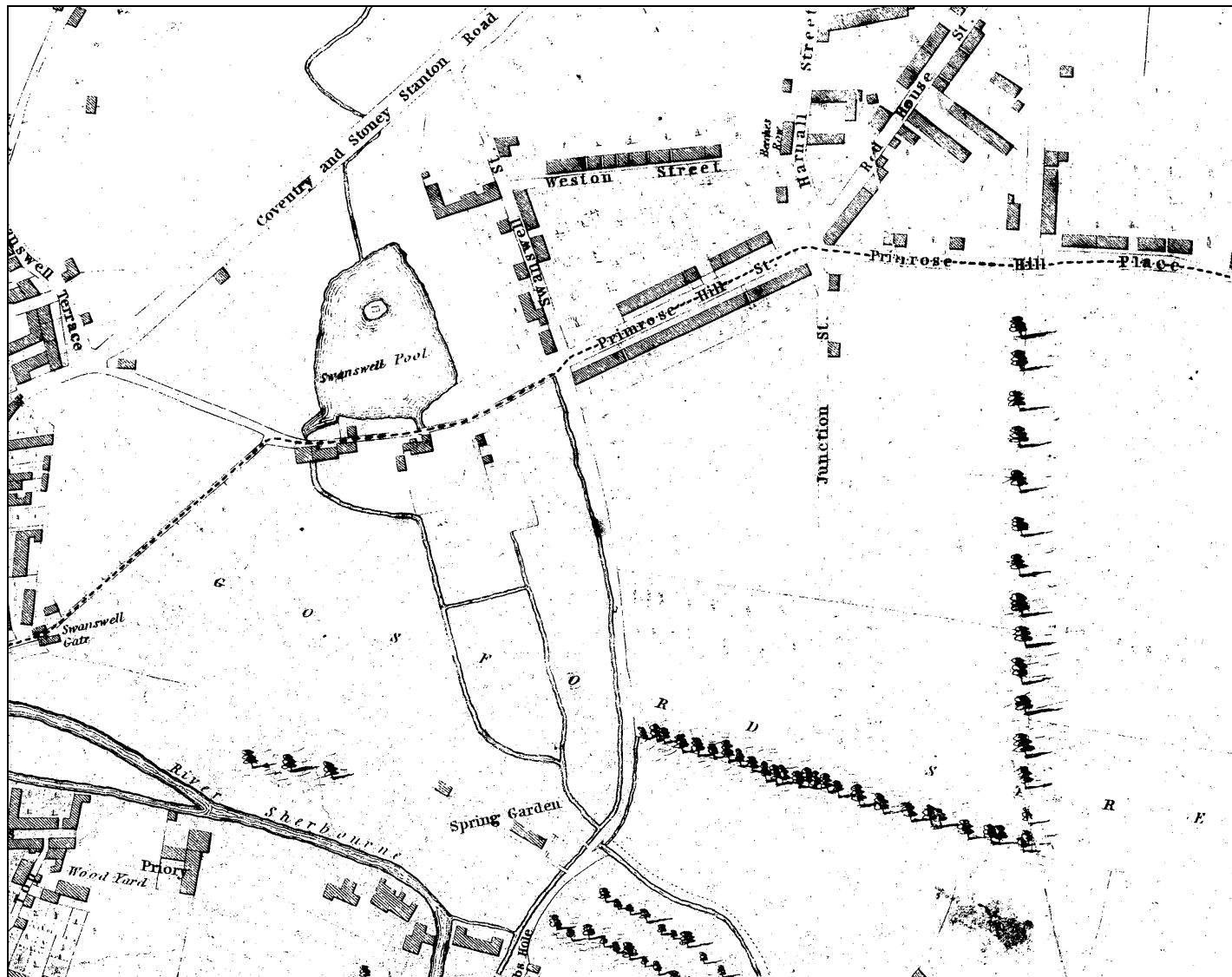


Fig. 2: Detail from Murphy and Wood map of 1837

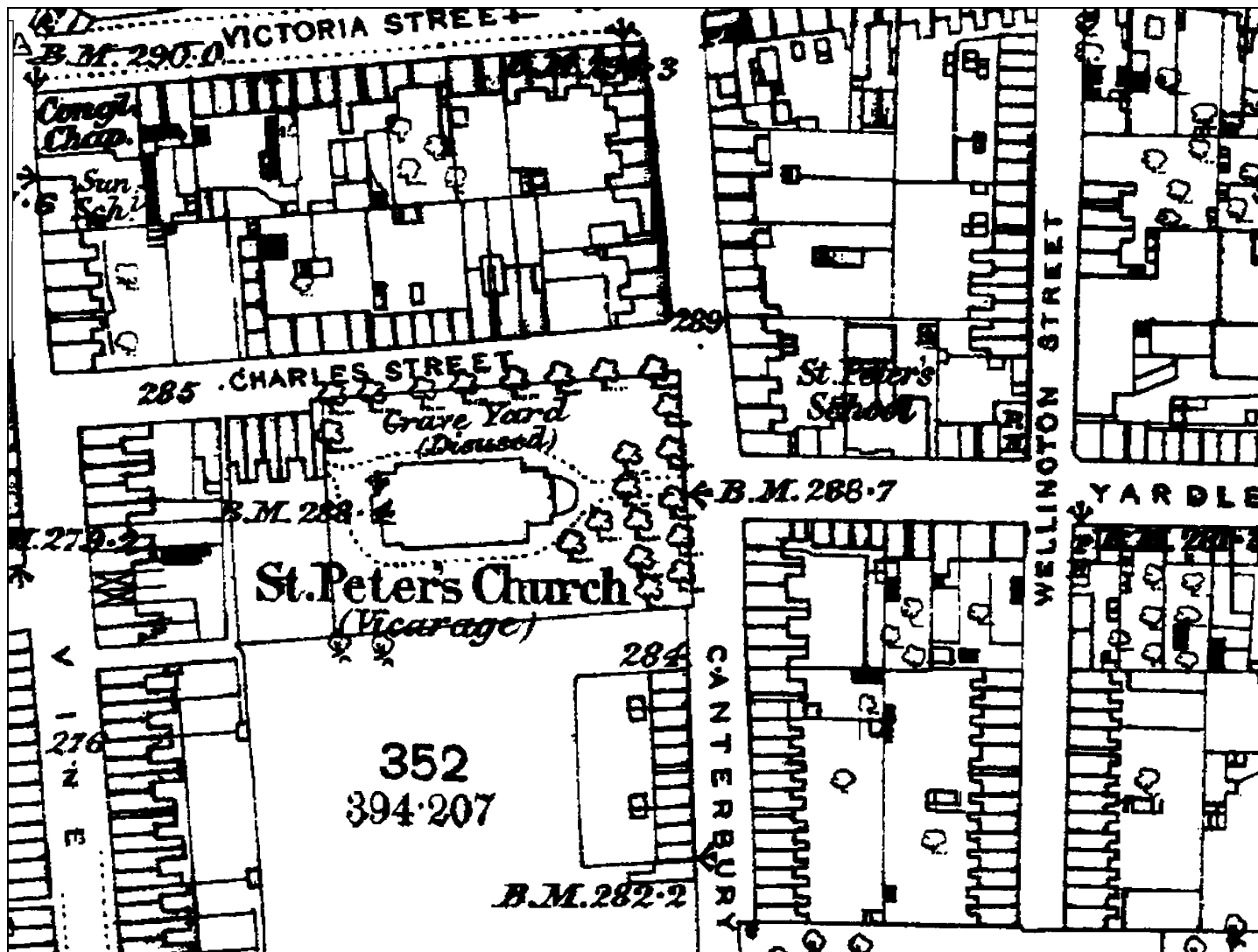


Fig. 3: Detail from Ordnance Survey map of 1888



locality of Harnall, was formed out of Holy Trinity parish in 1842 (VCH 1969, 366-7). The living was at first a perpetual curacy but was styled a vicarage in 1869. A mission room associated with the church and built of wood and corrugated iron was opened in Sackville Street in 1900. It consisted of a chancel, organ chamber and vestries, with space for three classrooms, separated by movable screens. It was derelict in 1964 and has since been demolished (VCH 1969, 366-7).

4.5 The first burial at St Peter's took place on 7th November 1841 and was of a three month old child. This is merely the first example of the high degree of infant mortality shown in the burial registers where at least half of those buried were under ten years old and the majority of these less than three years old. The number of burials varied over the years but the majority of the burials on the site took place during the first three decades of the cemeteries use. In the early 1840s the number of burials was between 50 and 65 per year but by 1854 this had increased to 164. This had declined to 60 in 1870 and in 1871 only ten burials are noted and by 1888 the Ordnance Survey map marks the graveyard as being disused (Ordnance Survey 1888, Fig. 3). It is possible that only interments in existing vaults were taking place or existing graves being re-opened for the addition of family members. The rate changed little over the later years of the 19th century and declined even further into the 20th century. Only two burials are recorded in 1919 and no more until 1931 when two people were buried. The last burial is recorded as having taken place on July 14th 1931. The total number burials recorded is 2925 (WCRO St Peter's Church burial register).

4.6 The state of the burials grounds in Coventry was said to be unsatisfactory when reported by Coventry City Council to the Commissioners on the State of Large Towns in 1843. At this time Coventry had a large population and a high death rate with only Holy Trinity, St Michael's and St Peter's churches having cemeteries in which to inter the bodies. The council thought that one reason for the high death rate was the state of the cemeteries. The corporation established a public cemetery to the south of Coventry's city walls, on London Road, under an Act of 1844. The first burial in this new public cemetery was in December 1847. The new public cemetery was expanded in 1853 and in 1854 a scheme was drawn up for the closing of all other burial places in the city. The cemetery was expanded to the south of the railway in 1887 and again in 1929 (VCH 1969, 279). The expansion of the London Road cemetery, together with the lack of space surrounding St Peter's church, are the likely reasons for the decline in the number of burials at the church.

4.7 The majority of the 19th century housing in the area surrounding St Peter's Church was demolished in the 1960s, with most of the existing housing being of later 20th-century date and this, along with a recent influx of University halls of residence, has altered the character of this part of Hillfields enormously. A few examples of the earlier housing survive, including an early Victorian red brick terrace on Charles Street that is a Grade II Listed Building (Listed Building Ref. 21858; HER DCT125, DCT384). There are also the remains of a late 19th-century terrace on the east side of Canterbury Street and a few remaining late 19th/early 20th-century terraces in the vicinity.

## **5. Observation of Groundworks**

5.1 All of the excavation observed for groundworks around the church was carried out using a tracked 360° mini-excavator. In Trenches 1A-E and Trench 2 this used a 0.60m toothed bucket. In Trench 3 a 1.2m toothless ditching bucket was used.

### **TRENCH 1A and 1B**

5.2 This trench was excavated to re-site 50 of the gravestones that had previously

lined the boundary of the churchyard. The initial groundworks consisted of the

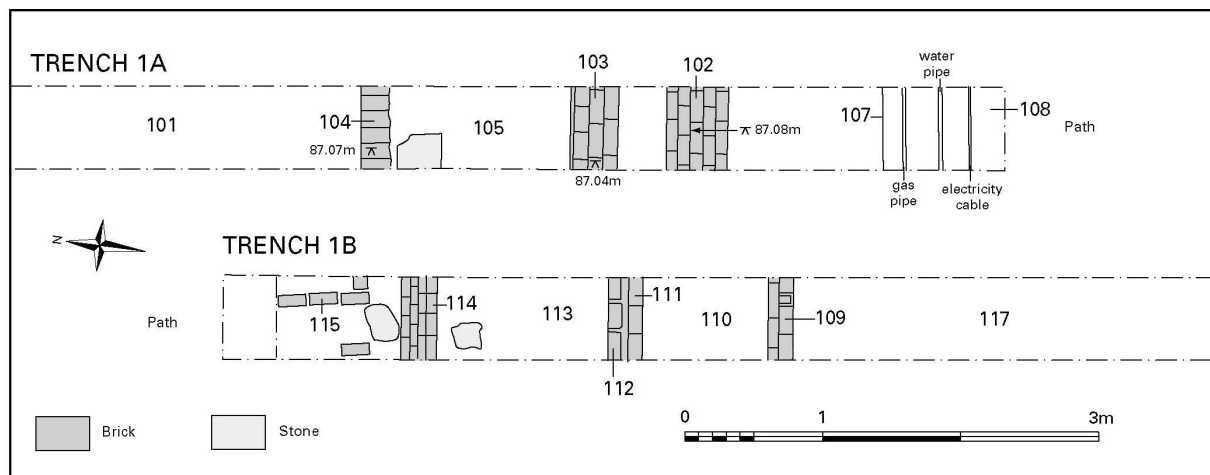


Fig. 4: Plan of features in Trenches 1A and 1B

excavation of the trench, c.0.60m wide by up to 0.75m deep, aligned roughly north-south to the east of the church. The trench was divided into two sections by the pathway that ran eastwards from the east end of the church. The northern section was designated 1A, the southern 1B (Figs. 1 and 4).

5.3 The earliest archaeological remains recorded in both the northern (101) and the southern (117) halves of the trench was a deposit of reddish brown sand/sandy loam that contained few sandstone fragments and patches of dark grey sandy loam mottling. This probably represented the mixed backfills of the graves that occupied the area though the trench was not deep enough to disturb any individual bodies. No individual grave cuts were recorded nor any skeletal remains and it is possible that some at least of this material was a make-up/levelling deposit. The remains of five brick-built tomb-vaults were recorded, three of which had been largely destroyed by modern graveyard clearance.

#### *Trench 1A*

5.4 Two of the brick tombs were uncovered in Trench 1A (Figs. 5-7). One of these consisted of the outside of an intact brick barrel vault (102), aligned east-west, whose full extent was not uncovered but which appeared to be at least 0.80m wide. The top of the vault was located 0.58m below the existing ground surface at 87.08m AOD. To the north of this was a similar brick barrel-vaulted tomb aligned east-west parallel with 102. The brick side walls of this tomb were uncovered showing that it measured c.1.35m wide. The south wall, which probably also formed the north wall of the barrel-vaulted tomb 102, was of double thickness mortared brick (103) and its top course was located 0.58m below the existing ground surface at 87.04m AOD. The northern wall (104) was of similar construction, the width of its top exposed course consisting of bricks laid lengthwise and being located 0.70m below the existing ground surface at 87.07m AOD. The springing of a barrel vault for the tomb was observed on both walls but the vault itself had been destroyed by a cut (106) that probably removed an associated monument that had once rested on the ground surface. This destruction was probably part of the graveyard clearance that resulted in the tombstones being placed against the graveyard wall. Following the destruction of the barrel vault, the tomb itself had been filled with the fragmented brick remains of the vault itself and with broken fragments of gravestones (105).



Fig. 5: Trench 1A looking south



Fig. 6: Trench 1A looking north



Fig. 7: Trench 1A vaults 102 and 103



Fig. 8: Trench 1B looking south



Fig. 9: Trench 1B vault 115



Fig. 10: Trench 1C looking south-east



Fig. 11: Trench 2 vault 207

5.5 The most recent features were the gas electric and water pipes recorded running east-west along the north edge of the pathway running from/to the east end of the church. Although inserted at different times these have been given the same trench cut number (107) as all lay close to one another: the individual trenches could not be identified and the fills were all the same very dark grey sandy loam (108). All of the deposits and feature described above were overlain by very dark grey sandy loam topsoil (100).

#### *Trench 1B*

5.6 A further three tombs were recorded in Trench 1B (Figs. 8 and 9). To the south was a single width brick wall (109) aligned west-east that continued the line of the south wall of the church. Wall 109 was located 0.70m below the existing ground surface and the springing of a barrel vault was observed on its north side. Another single brick width wall (111) was recorded 0.98m to the north of wall 109 and running parallel to it. Wall 111 was recorded 0.76m below the existing ground surface and probably formed the north wall of a tomb vault whose south wall was 109. Immediately north of wall 111 was another single width brick wall (112) running parallel with and built against it. A gap of c.2cm between the two walls, which were definitely separate features, had been filled with mortar, but it is not known which was the earlier. Wall 112 was recorded 0.64m below the existing ground surface and probably formed the south wall of a tomb vault aligned east-west. To the north the remains of the northern half of the mortared brick barrel vault (114) were recorded. All of the vaulting to the south of 114, together with the barrel vault of tomb 109/111, had been destroyed by a vertically sided cut (116) that probably removed above ground memorials during the clearance of the graveyard. Both tombs were backfilled with the fragmented remains of the vaults and with broken gravestones (110, 113).

5.7 To the north of vault 114 was the corner of another brick built tomb. This was built of a single width brick wall (115) aligned roughly east-west and turning south-north. It was slightly out of line with the two tombs to the south. The top of the wall, recorded at 0.58m below the existing ground surface, appeared to have been capped with flat sandstone slabs 0.06m thick (119) rather than a brick barrel vault. What appeared to be the base of the tomb lay at 1.03m below the top of the wall and the tomb itself appeared to be empty, though this was uncertain as it was recorded only through a small break in the roof caused by the current machining (Fig. 9). All of the deposits and features described above were overlain by very dark grey sandy loam topsoil (118).

#### *Trenches 1C, 1D and 1E*

5.8 Three further small trenches were excavated within 0.15m of the inside of the east wall of the churchyard. They were cut in order to erect the gravestones that were left over after Trenches 1A and 1B had been filled.

5.9 Trench 1C was of trapezoidal shape in plan, measured 1.8m across at its greatest extent and was cut to a depth of c.0.90m below the existing ground surface. It was located in the south-east corner of the churchyard. What was probably the earliest archaeological evidence recorded in the trench was a deposit of light reddish brown sand/sandy loam (121) at least 0.50m thick. This was the equivalent of 101 and 107 in Trenches 1A and 1B, probably representing the mixed fills of the graves or make-up/levelling material. The brick and mortar setting for an iron prop supporting the churchyard's iron railings was recorded in the north-eastern corner of the trench (122). The whole of the trench was overlain by a 0.40m thick layer of very dark grey silty loam topsoil (120).

5.10 Trench 1D was a rough square with 1m sides located inside the southern half of

the boundary wall. It was cut to a depth of *c.*0.85m below the existing ground surface. Light reddish brown sand/sandy loam (124) filled the base of the trench and was at least 0.50m thick. This was the equivalent of 101 and 107 in Trenches 1A and 1B, probably representing the mixed fills of the graves or make-up/levelling material. The brick and mortar setting for an iron prop supporting the churchyard's iron railings was recorded in the north-eastern corner of the trench (125). The whole of the trench was overlain by a 0.40m thick layer of very dark grey silty loam topsoil (123).

5.11 Trench 1E (Fig. 10) measured *c.*1m wide by 4.8m long running southwards from the north-east corner of the graveyard. It was cut to a depth of *c.*0.85m below the existing ground surface. Light reddish brown sand/sandy loam (127) filled the base of the trench and was at least 0.45m thick. This was the equivalent of 101 and 107 in Trenches 1A and 1B, probably representing the mixed fills of the graves or make-up/levelling material. Two 0.25m wide brick and mortar settings (128, 129) for iron props supporting the churchyard's iron railings were recorded on the east side of the trench, spaced 1.4m apart. The whole of the trench was overlain by a 0.30m thick layer of very dark grey silty loam topsoil (126).

## TRENCH 2

5.12 The next phase of the groundworks involved the excavation of a trench to take all of the services for the new apartments. This measured *c.*0.70m wide and up to 1.25m deep and ran roughly SSE to NNW from the north side of the church tower to the new entrance to the east of the current access road from Charles Street. It included a dogleg close to the new Charles Street entrance which was aligned south-east to north-west.

5.13 The geological natural reddish brown clay or silty sand (209/ 206) was recorded in patches towards the north and south ends of the trench. The natural clay 209 occurred from *c.*0.80m below the existing ground surface at the north-west end of the trench to 0.95m in the centre of the trench. The natural silty sand 206 occurred at a depth of 1.10m below the existing ground surface towards the south-east end of the trench.

5.14 The geological natural was overlain by a deposit of reddish brown sandy clay mottled with dark grey sandy clay loam (205). The deposit probably represents a levelling layer, though the northern edge of the trench may mark the approximate boundary of the burial area and some of the material in this edge may have been grave fill.

5.15 The edge of a brick vault (207, Fig. 11) was recorded in the north edge of the trench. This only appeared as part of the trench edge collapsed and little could be seen. It appeared to have been overlain by deposit 205. The recorded fragment was the south-west corner of a possibly rectangular tomb with walls a single brick thick. It did not have a barrel vault and may have been capped with sandstone slabs as with tomb 115/119 in Trench1, but this is uncertain. The upper brick course was located 0.95m below the existing ground surface and what may have been the base of the tomb was located a further 1.05m below this level. Part of the tomb appeared to contain brick rubble (208) suggesting that it had partially collapsed. What may have been a skull can be seen on a photograph taken through the small opening that was uncovered.

5.16 Towards the south-west end of the trench deposit 205 was overlain by a layer of sandstone fragments (202) that acted as a make-up layer for the existing tarmac (201) path. The tarmac was cut by the trench (203) for a drain aligned roughly south-east to north-west running from the church. The drainpipe was ceramic within a mortar case and the trench was backfilled with mixed dark grey and reddish brown sandy

clay loam capped with more tarmac (204). To the north of tarmac path 201 deposit



Fig. 12: Trench 3 looking west



Fig. 13: Trench 3 drains 305 and 307

205 was overlain by dark grey sandy clay loam topsoil (200).

### TRENCH 3

5.17 A trench was cut for the foundation of a new fire escape to the south-east of the nave, immediately adjacent to the chamber on the south side of the chancel (Fig. 12). The trench was roughly rectangular in plan, aligned WSW to ESE and measured approximately 3m long by 2m wide and up to 1m deep (86.30m AOD). Geological natural reddish brown clay (308) was encountered at around 0.85m below the existing ground surface (86.45m AOD).

5.18 The geological natural was overlain by a layer of mixed reddish brown sand/sandy loam (303) 0.27m thick that was probably a make-up layer. This was in turn overlain in places by a layer of dark reddish brown sandy loam (302), up to 0.25m thick, that may have been the remains of an early ground surface but would probably have dated from the lifetime of the church. Layer 302 was cut by the trench (306) for a drain running north-west to south-east and aligned with a drain downpipe against the side of the church. The drain consisted of a cement trough, c.1m below the existing ground surface, capped by bricks laid lengthways across its width and overlain by dark reddish brown sandy loam that backfilled the trench (307, Fig. 13).

5.19 The backfilled drain trench was overlain by a layer of reddish brown sand and sandstone fragments 0.14m thick (301) that acted as make-up for the existing tarmac path (300) but may have been originally the make-up for an earlier pathway. Layer 301 had been cut by the trench (304) for another drain that replaced drain 306/307 and ran parallel and immediately to the north-east of it. The base of the new ceramic

drain pipe lay 0.85m below the existing ground surface and was overlain by mixed reddish brown sandy loam and clay (305) that backfilled the trench. The backfilled drain trench was overlain by the existing tarmac path (300).

## GROUND REDUCTION

5.20 In August 2007 work began on the refurbishment of the church and associated groundworks outside. Ground reduction took place for the new access and associated hardstanding to the north, south and east of the church. The area was stripped from the path edge northwards, leaving three large 'tongues' of land south of the three large trees on the northern perimeter, one smaller wedge of land on the western perimeter and a smaller wedge around a conifer on the north perimeter. The access area closest to the graveyard wall was stripped deepest, cutting 0.60m below ground level into a mixed reddish sandy clay (401). The service trench excavated in early 2007 (T2) could be clearly seen in this area. Over the majority of the area north of the church the site was stripped of topsoil only (400), to an average depth of 0.20m. Finds from the topsoil, of modern bottle glass, a small amount of pottery and an worn penny were recorded but not retained.

*The 'Thornhill vault', (Fig. 1)*

5.21 To the east of the church a cut (417) for a large brick-built vault was recorded, with a dark grey brown sandy clay fill (418) to the east of the eastern wall (405) of the vault. The north wall of the vault (402) was visible when the topsoil was removed, along with c.0.36m of the remains of the barrel vaulted ceiling (412) (Figs. 14, 16). Part of the west wall (403) was also visible when the topsoil was stripped, but the tops of the south (404) and east (405) walls remained below stripped level. The vault measured 2.05m north-south and 2.30m east-west (internally) and was 2.24m deep from the surviving top of the west wall to the stone floor (406) below and slightly deeper to the east. The walls of the tomb bore traces of whitewash; the whitewash survived particularly well on the east wall. The central slab of the stone floor (Fig. 15) was inscribed with a shield bearing the letters IS (probably standing for JS) and the date 1851. This, and the fact that there appeared to be a void at the base of the stone indicated that there was a grave of 1851 beneath this 'floor' level. This would suggest that the vault was originally constructed to a depth of c.3m or more, a similar depth to those at St Martin's-in-the-Bull Ring, in Birmingham (Buteaux and Cherrington 2006, 39).

5.22 On the south side of the vault was a lead coffin burial (410, Fig. 17). The coffin had been badly damaged by rubble falling in from above and was not sealed. The lead coffin bore some traces of decorative incised work along its side, although only a very small area was visible. A trapezoidal copper alloy *depositum* plate (Fig. 18) lay on the remains of a sheet of fabric on top of the lead coffin and read:

CHARLES THORNHILL  
Died  
October 27th 1862  
Aged  
55 YEARS

5.23 Charles Thornhill's grave had been sealed by a series of stone slabs forming a shelf (411) which rested on bricks protruding out from the face of wall 404 and on a brick dwarf wall (416) running east-west across the floor of the vault. Stone shelf 411 supported the remains of another coffin. This coffin (409, Fig. 19) was a composite construction and it appears that this had also been covered with fabric, a practice common in the 18th and 19th centuries (Litton 1991, 99-102). The outer oak 'case' hid





Fig. 14: Top of wall 402 and vault roof 412



Fig. 15: Inscribed grave slab in floor of vault

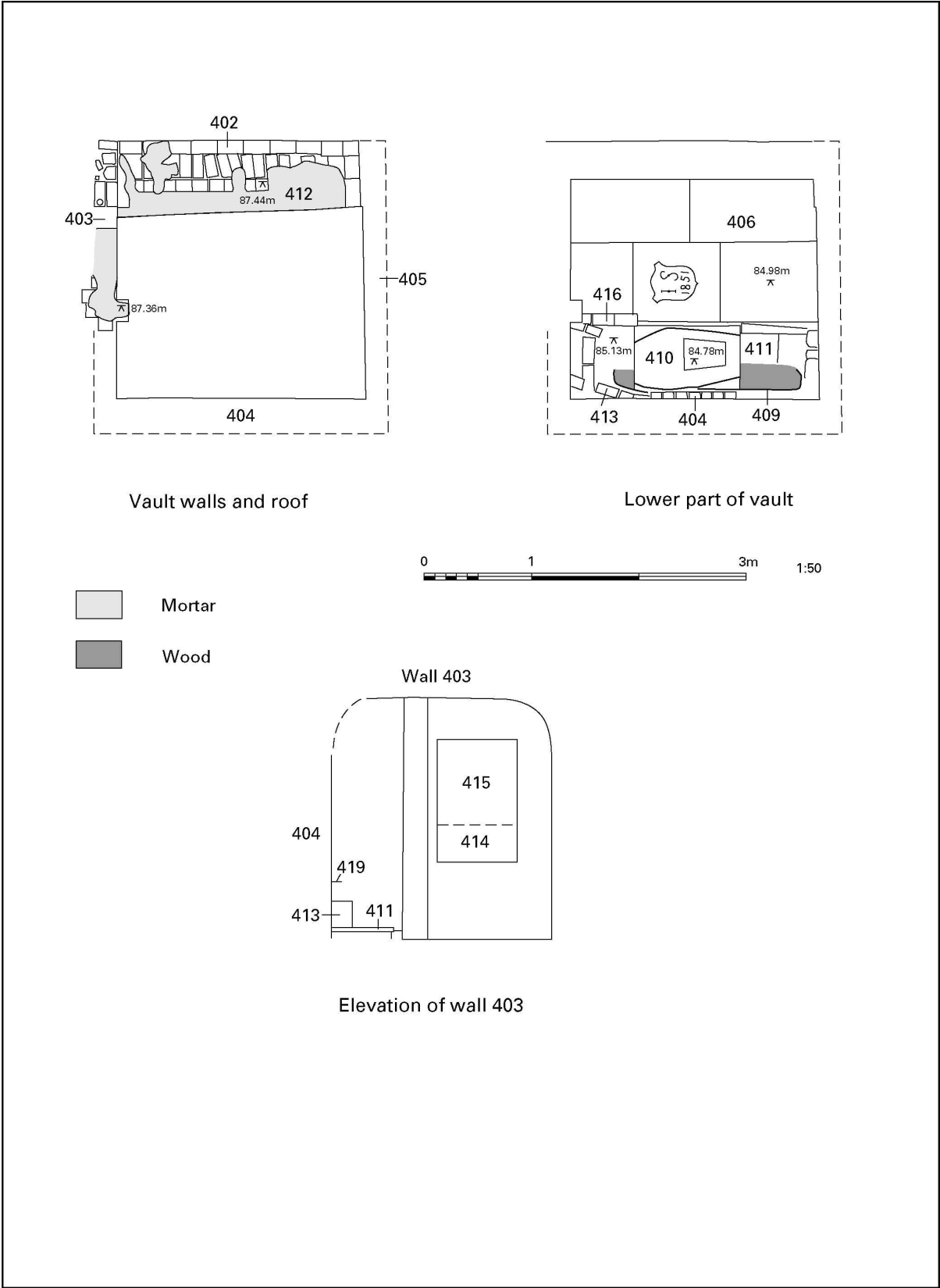


Fig. 16: Plans and elevation of Thornhill vault



Fig. 17: Lead coffin burial



Fig. 18: Coffin plate of Charles Thornhill



Fig. 19: Upper wooden coffin 409



Fig. 20: Entrance to vault

a 'shell' of thin metal (zinc or tin?) and the inner coffin was also of oak. This type of triple shell coffin has been described as 'the traditional coffin for the burial vault and brick-lined grave' (Litton 1991, 101). The coffin had also been badly damaged by rubble falling on to it and most of the coffin had not survived. Four coffin grips (handles), with floral decoration, were recovered from the area around the coffin, along with an iron bracket and two spikes. The latter three iron objects may have been associated with the shelving for the coffins.. The only skeletal remains (408) found were the skull (with some hair still attached, the humeri (without epiphyses) and the broken proximal epiphysis of one of the humeri. A shield-shaped tin coffin *depositum* plate was recovered from the debris in the area of the grave. The shape of the shield is the same as the 'Type 2' shield coffin plates found at St Martins-in-the-Bull Ring in Birmingham, which dated from 1862-1904 (Hancox 2006, 159). The surface of the plate appeared to have been covered or plated with a highly reflective silver-coloured metal and this had been engraved with the following:

Sarah Thornhill  
Died  
March 10th 1870  
Aged  
59 years

5.24 The remains of a brick wall surrounding the coffin at the head end were also recorded (413). A number of iron pins protruded from wall 403, 0.40m above shelf 411 (419). It would appear that these were in place to support another shelf but no further evidence of this existed. The broken shelf may have been removed by machine during emptying out of the vault.

5.25 The access to the vault was originally through an entrance, some 0.75m wide, in the northern part of the west wall (Fig. 20). The bricks on either side of the entrance were curved, bull-nosed bricks, indicating the high quality of the tomb. The doorway had been blocked at least twice as the lower brick blocking (414) was a better build than the upper blocking (415) which was mortared much more roughly.

5.26 The entire vault had been deliberately infilled with rubble (407), including the demolished barrel vault of the tomb itself and the infilling probably dates to as recently as the graveyard clearance of the later 20th century. The rubble was composed of a mixture of bricks, broken fragments of red and olive sandstone and fragments of gravestones. Some of the rubble appeared to be from the stone slab above the vault and held the remains of iron rail-posts in the corners. Three of the gravestones in the fill were simple slate ones with initials and dates whilst one fragment was a corner of a more elaborate slate grave (see Appendix C). The gravestone fragments were stacked with the other gravestones on site. The gravestone of the Reverend Charles Thornhill (see Appendix C: Gravestone 18), which had formerly been standing on the perimeter of the site some 50m away from the vault had, coincidentally, been relocated immediately east of his grave. His gravestone also commemorates Emily Alice Thornhill (recorded as having died at Leamington in 1879) and John Smith (Died 1851). Charles Thornhill was the third incumbent of the church and minister there from 1846-1862; he was the nephew of the first incumbent John Howells. No gravestone has been found for Sarah Thornhill. It may be that Emily Alice, although commemorated on this stone, was buried elsewhere.

5.27 Census records of 1951 tell us that the Reverend Charles Thornhill lived with

his sisters, Emily Alice and Sarah, and his mother, whose name was also Sarah, at the Parsonage House attached to St Peter's Church. They had one house servant. Mrs Sarah Thornhill was a widow and originally from Darlaston, while Charles and Sarah had been born in Walsall. The 1861 census has Charles Thornhill, still incumbent of St Peter's Church, recorded as head of a household in Tunbridge Wells, Kent, with his younger sister Sarah and widowed sister Marianne Smith ('Proprietor of houses'). He died in Tunbridge Wells in the following year. It appears that Marianne later moved back north to Milverton, (near Leamington) where, in 1871, she was living as 'Fundholder' with sister Emily Alice. It is possible that the John Smith commemorated on the gravestone and buried in the vault is the former husband of Charles Thornhill's sister Marianne.

## 6. Building Recording

6.1 Photographic recording was carried out using a 35mm camera with Ilford FP4 film and a Nikon Coolpix 8400 for digital photos. A flash was used for internal photography. Digital photographs were also taken of the building externally and internally. Digital photographs of the graveyard and memorials were also taken prior to and, in some cases, after they were moved. Records of the inscriptions on the memorials in the graveyard were also made for archive purposes and have been reproduced in Appendix C.

6.2 The architect's elevations have been augmented (Figs. 21-23) to show some detail but the basic elevations are very uniform and little was needed to alter them. The building was very much as it is described in the Listing (Appendix B) and most of the description that follows is taken directly from the Listing.

### EXTERIOR

6.3 The church is brick built in Flemish bond with brick and red sandstone dressing (Figs. 24). The windows have flat-faced hood-moulds with square terminals, some of which have been dressed off. The east window has four lights in a rustic Perpendicular style (Fig. 25) and was subject to vandalism in August 2007, with part of St Peter being broken. The nave is buttressed with a parapet and large lancet windows. The west end of the church has a three-stage porch with tower above (Fig. 26). The tower has angle buttresses with set-offs and a parapet with crow-stepped battlements (Fig. 27). The doorways on the west end have double-chamfered Tudor arches (Fig. 28). A large three-light window is set over the door and there are tall lancets to the belfry. The vestry, at the east end of the church, is low with a blocked triple lancet window (Fig. 29). To either side of the vestry are small ante rooms, the southern one has an external doorway (Figs 30 and 31). There is a single small window with a pointed arch on the western end of the north side of the building (Fig. 32). The windows all have sloping tiled sills (Fig. 33). The string course below the parapet is made up of decorative brick, projecting forward from the wall (Fig. 34). Two different shapes of brick have been used on the walls, one with a concave moulding and the other with a convex moulding; one brick type runs in a stretch along the wall and then changes to another for no apparent reason. The same brickwork is used around the top of the vestry and the two ante rooms.

### INTERIOR

6.4 The floor of the church was largely wooden, heavily attacked by woodworm, broken in places. The sanctuary is defined by a moulded stone arch, the mouldings dying into plain responds (Fig. 35). The chancel is defined by very plain timber rails with a memorial date of 1944 (Fig. 36). The substantial roof has eight bays made up of nine closely-spaced trusses of tie-beam and queen-post design (Fig. 37). Short arched braces below the tie beam are decorated with pierced quatrefoils and



Fig. 21: West and East elevations

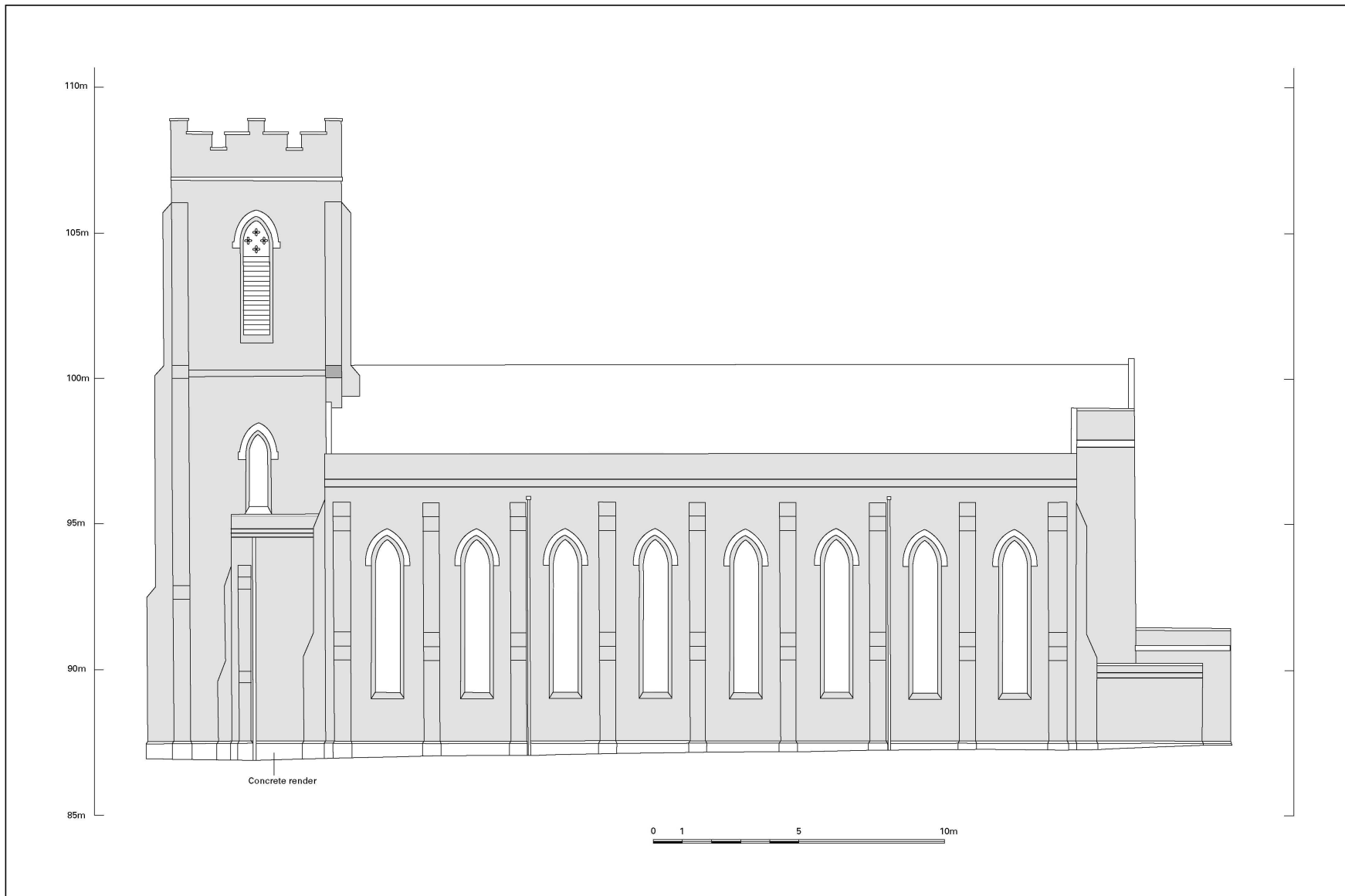


Fig. 22: South elevation



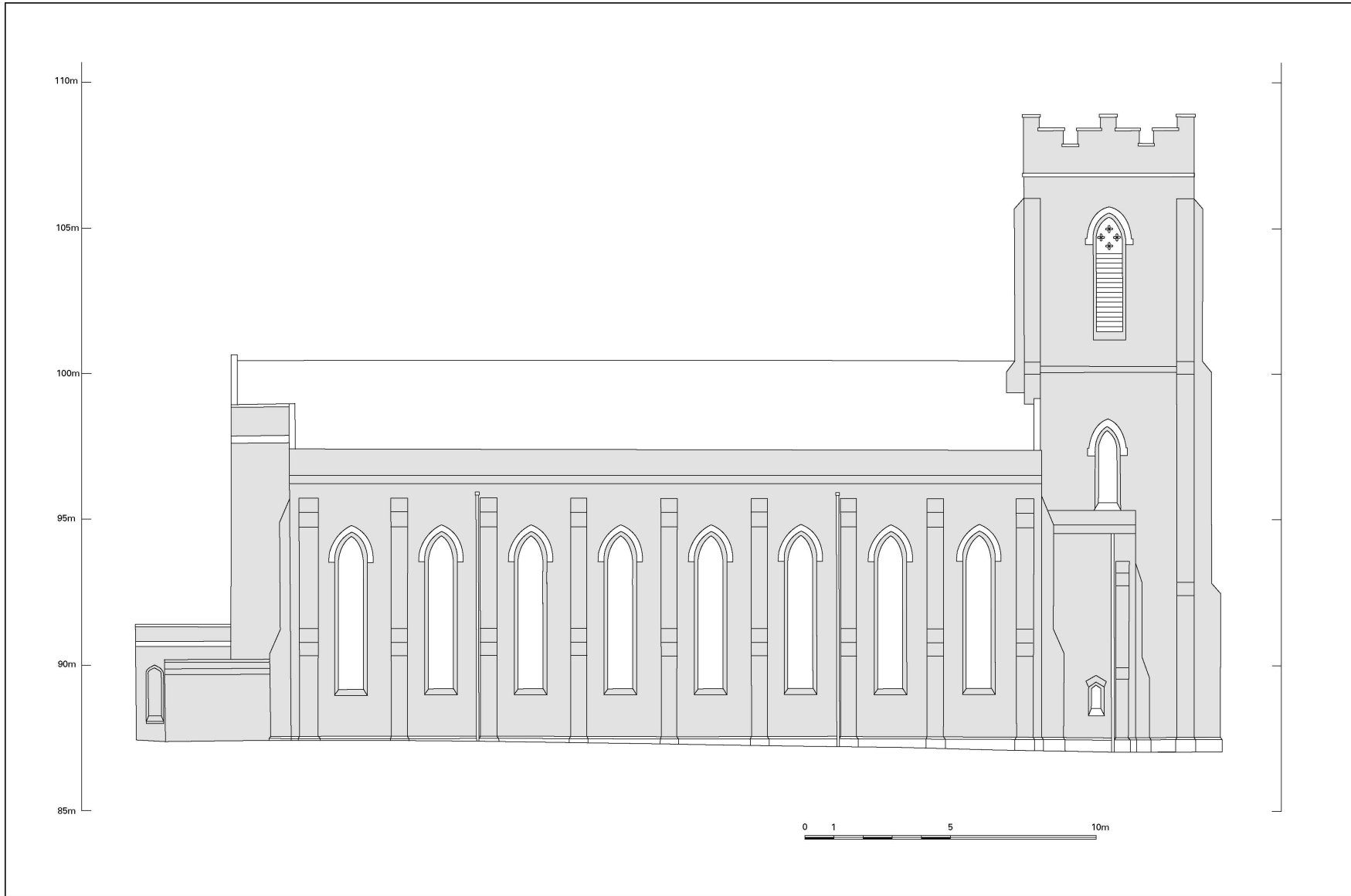


Fig. 23: North elevation



Fig. 24: View of church looking south-west



Fig. 25: East window



Fig. 26: West end of church



Fig. 27: Tower



Fig. 28: Main doorway



Fig. 29: Vestry window



Fig. 30: Southern ante room



Fig. 31: Northern ante room



Fig. 32: Small window on north side of church



Fig. 33: Window sill



Fig. 34: Moulded brick string course



Fig. 35: Sanctuary



Fig. 36: Altar rails



Fig. 37: Roof timbers





Fig. 38: Corbels supporting roof timbers



Fig. 39: View west to gallery



Fig. 40: Side view of organ



Fig. 41: Columns supporting gallery

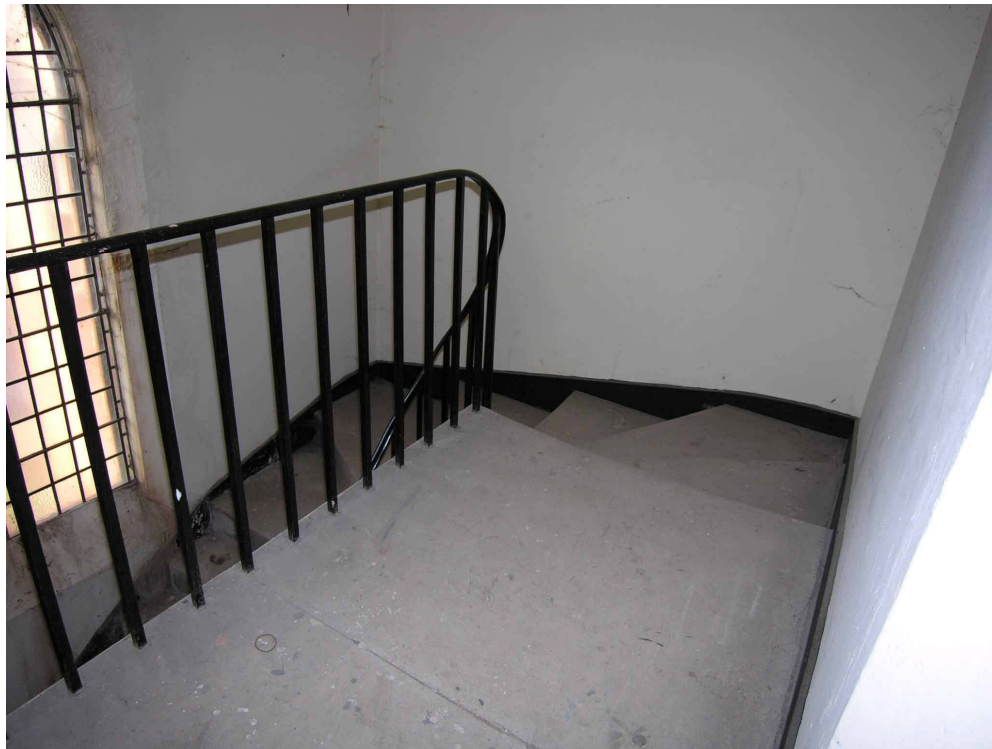


Fig. 42: Stairs to gallery



Fig. 43: Font and arch to porch



Fig. 44: Pulpit and wooden vestry screen

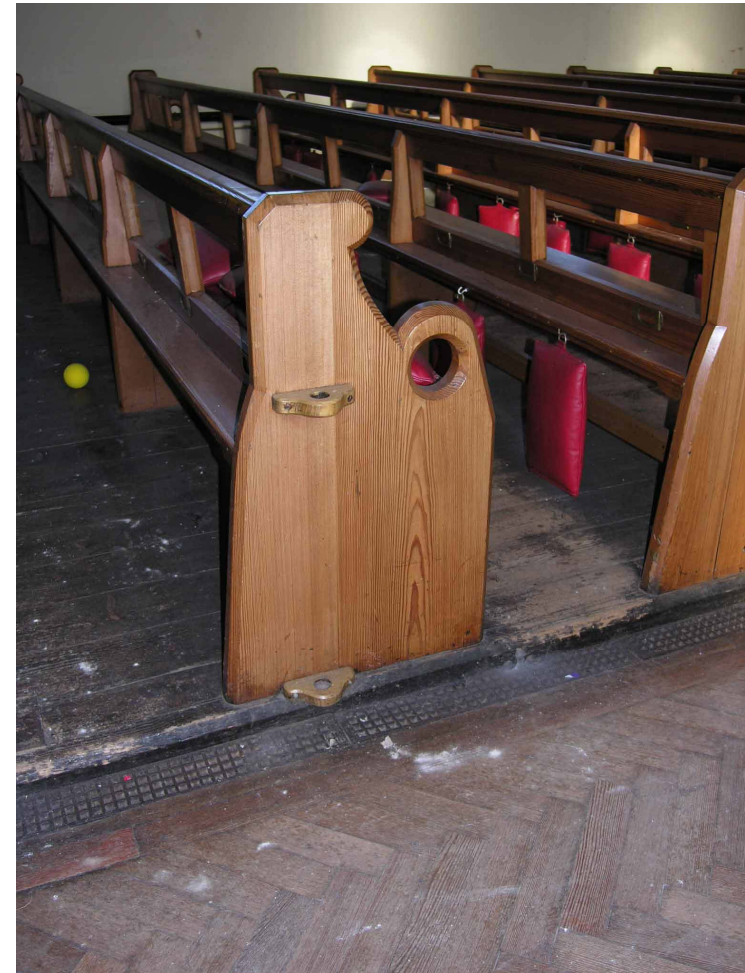


Fig. 45: End of pew



Fig. 46: View of WWI memorial at south-east end of nave

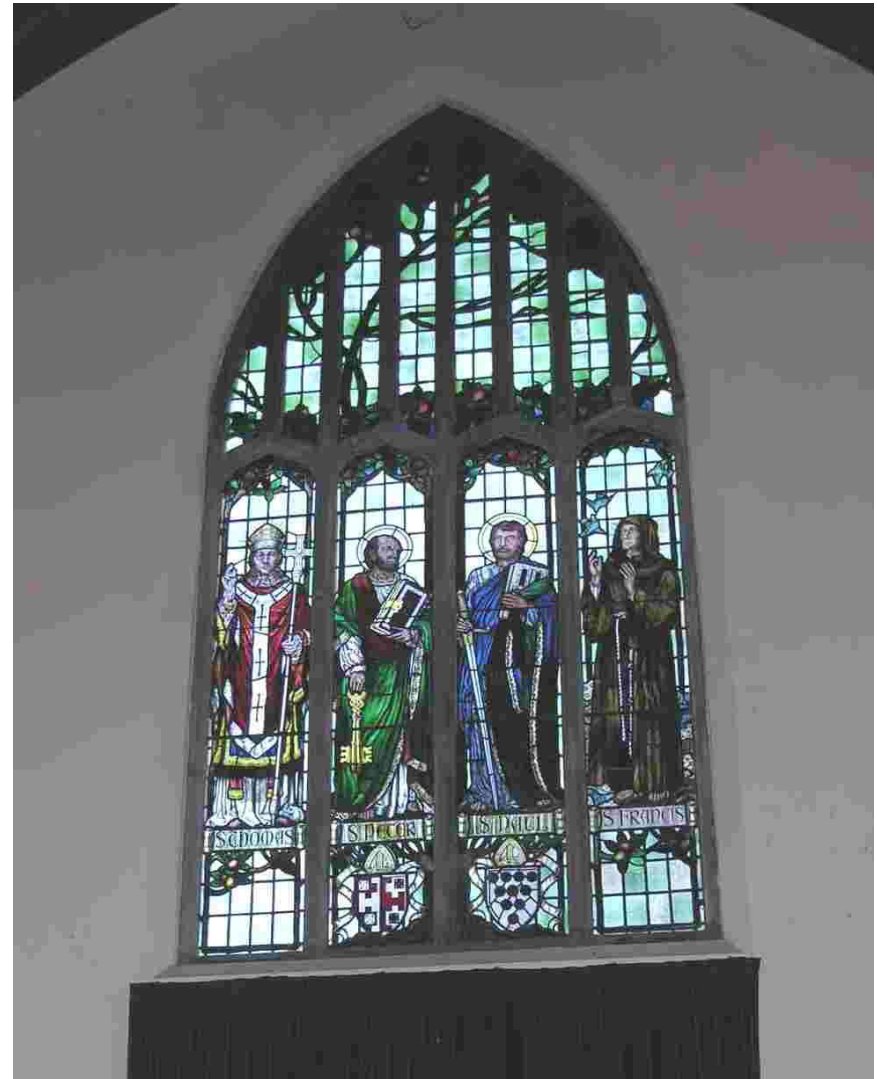


Fig. 47: Stained glass window

supported on moulded stone corbels (Fig. 38) and there are cusped braces from the queen posts to the collars. The roof is plastered behind the rafters. There is a very deep west gallery (Fig. 39), canted forward in the centre and holding a substantial organ (Fig. 40). The front of the gallery has been renewed but the supports, two rows of cast iron columns, with additional columns at the angles, appear to be original (Fig. 41). There are cantilevered stone stairs to the galleries which have iron balustrades with plain verticals and ramped handrail (Fig. 42). Arched doorways at the west end of the nave lead to the gallery stairs and a large chamfered arch in the centre leads into the porch (Fig. 43). The font, painted white, has an octagonal bowl carved with blind trefoils, and an octagonal stem. The font cover is dated 1966. The timber pulpit is damaged, and has a 1914 memorial date but appears to be integral with the wooden screening forming a south-east vestry in the corner of the nave (Fig. 44). The vestry screening is dated 1929. The nave pews or benches are of rather unusual design with open backs and shouldered ends pierced by roundels (Fig. 45). Some gallery benches, with very slender ends and panelled backs may be original, along with simple benches along the back wall of the nave. The lectern is in the form of a brass eagle (Fig. 36). Two timber altars exist, both probably early twentieth century. One, at the east end of the nave stands in front of a panelled First World War memorial incorporating lists of names (Fig. 46).

6.5 The stained glass in the east window is a 1955-6 replacement copy of the arts and crafts window that originally sat there (Pevsner and Wedgwood 1961, 264). The window shows an apple tree in the background and Saints Thomas, Peter, Paul and Francis in the lancets below (Fig. 47).

6.6 In summer 2007, after the main phase of building recording had taken place, the interior of the church was gutted. The wooden fixtures and fittings, including the memorial panel, font, vestry screening and pews were removed and broken up. The rotten wooden floor was lifted to reveal stone slabs in places and dwarf brick walls that supported the floor. No graves were noted below floor level.

## 7 Conclusions

7.1 The cemetery of St Pete's church is known to contain almost three thousand burials, largely dating to the three decades following the churches consecration in 1841, with a high proportion of infant and child burials. The majority of the burials date to the time when Hillfields was a relatively newly occupied part of the city and home to families of ribbon-weavers. The number of burials in the churchyard decreased markedly following the opening up of the public cemetery on London Road.

7.2 A series of brick-built vaults were recorded from the eastern part of the churchyard. A series of such vaults may have extended from the east end of the church and the majority of the vaults recorded lay in the area directly east of the chancel. The corner of a single brick tomb-vault was recorded to the north-west of the church nave. The majority of the brick-built vaults measured 0.80m-1.35m wide and more than a metre deep, though the actual depth was uncertain in the majority of the tombs. All of the brick tombs had been roofed with either brick barrel vaults or with flat stone slabs. No bones were recorded within the majority of the tombs, though where the insides were visible the vaults were filled largely with rubble which masked the presence (or absence) of any skeletal remains.

7.3 The most significant tomb to be recorded was a large square tomb to the east of the chancel. This contained at least three occupants, including the third incumbent of the church, the Reverend Charles Thornhill, his sister Sarah Thornhill, and a third person, probably John Smith, commemorated on the same slate tombstone that now lies close to the site of the actual grave and possibly the former husband of another of

Charles Thornhill's sisters, Marianne. This grave had been infilled with rubble, including numerous fragments of masonry and some fragments of gravestone. Charles Thornhill had been buried in a lead coffin and this was left undisturbed when the grave was backfilled, following the excavation of the tomb. The wooden coffin of Sarah Thornhill was badly damaged and her scant skeletal remains were reinterred in the grave.

7.4 Geological natural was only encountered in Trench 2 to the north-west of the church. No grave cuts were recognised cutting the natural sand and clay in this area with the exception of a single brick tomb. No human bone was recorded during any of the other ground works other than a small amount in the tomb recorded above. It seems likely that the majority of the trenches were not deep enough to encounter interred remains.

7.5 The majority of the brick tombs to the east of the church had been significantly disturbed during clearance of the graveyard in the later 20th century. The fragmented remains of grave slabs and other masonry were observed backfilling some of the backfilled tombs, causing damage to the burials below. The gravestones cleared from the cemetery were then moved to the north and south sides of the churchyard and the majority of these, having been recorded, have been re-moved to form a line parallel with the east end of the church.

7.6 A programme of photographic building recording took place prior to the removal of fixtures and fittings within the church in order for it to be converted into apartments. The church is a single phase building with additional internal features such as the wooden vestry and altar rails, first world war memorial and replacement stained glass window.

## **Acknowledgements**

The Warwickshire Museum would like to thank Lathams Architects for commissioning the work and to the staff of BGS Ltd for their co-operation on site during moving of the gravestones. We would also like to thank Dennis Pargetter for his cooperation during groundworks associated with the development. Work on site was carried out by Catherine Coutts, John Harman, Caroline Rann and Chris Jones. This report was written by Catherine Coutts and Chris Jones with illustrations by Andy Isham, and was checked by Ian Greig.

## **Bibliography**

Adams, J. 2006 The Parish, the Church and the Churchyard, in M. Brickley *et al.* *St Martin's Uncovered. Investigations in the churchyard of St. Martin'-in-the-Bull Ring, Birmingham, 2001*, 6-23, Oxford

British Geological Survey 1994 *Geological Survey of England and Wales, Coventry Sheet 169*

Buteaux, S. and Cherrington, R. 2006 The Excavations, in M. Brickley *et al.* *St Martin's Uncovered. Investigations in the churchyard of St. Martin'-in-the-Bull Ring, Birmingham, 2001*, 24-89, Oxford

Cox, J. 1892 *Public Parks and Pleasure Grounds, City of Birmingham*

Curl, J. S. 2000 *The Victorian Celebration of Death, Sparkford*

Hancox, E. 2006 The Impedimenta of Death, in M. Brickley *et al.* *St Martin's Uncovered. Investigations in the churchyard of St. Martin'-in-the-Bull Ring, Birmingham, 2001*, 152-186, Oxford

Litton, J. 1991 *The English Way of Death*, London

Murphy, W. and Wood, A. 1837 *Plan of the City of Coventry from Actual Survey*, copy in Coventry HER

Ordnance Survey 1888 *First Edition 1:2500 Map, Warwickshire Sheet 21.12*

Pevsner, N. and Wedgwood, A. 1961 *The Buildings of England, Warwickshire, Harmondsworth*

VCH 1969 *The Victoria County History of Warwickshire, Vol. VIII, The City of Coventry and Borough of Warwick*, London

Warwickshire County Record Office *Copy of St Peters Church Burial Register 1840-1931*, microfilm copy in Warwickshire Record Office

WRO Z1/329 *Church and Churchyard Index, St Peters Church, Coventry*, Memorial Inscription Vo. 15/2, Warwickshire Record Office



## Appendix A: List of Contexts

### *Trench 1A*

- 100 topsoil
- 101 red-brown sandy loam deposit
- 102 brick barrel vault (of tomb)
- 103 brick wall (of tomb vault)
- 104 brick wall (of tomb vault)
- 105 fill of cut 106
- 106 pit/cut
- 107 service trench cut
- 108 fill of service trench

### *Trench 1B*

- 109 brick wall (of tomb vault)
- 110 fill of cut 116
- 111 brick wall (of tomb vault)
- 112 brick wall (of tomb vault)
- 113 fill of cut 116
- 114 brick barrel vault (of tomb)
- 115 brick wall (of tomb vault)
- 116 pit/cut
- 117 red-brown sandy loam deposit
- 118 topsoil
- 119 stone capping of tomb wall 115

### *Trench 1C*

- 120 topsoil
- 121 red-brown sandy loam deposit
- 122 brick foundation for railings

### *Trench 1D*

- 123 topsoil
- 124 red-brown sandy loam deposit
- 125 brick foundation for railings

### *Trench 1E*

- 126 topsoil
- 127 red-brown sandy loam deposit
- 128 brick foundation for railings
- 129 brick foundation for railings

### *Trench 2*

- 200 topsoil
- 201 tarmac path
- 202 sandstone make-up for 201
- 203 pipe trench
- 204 fill of pipe trench
- 205 red-brown sandy loam/clay loam deposit
- 206 red-brown silty sand geological

- natural
- 207 brick wall (of tomb vault)
- 208 rubble fill of tomb vault
- 209 geological natural red-brown clay

### *Trench 3*

- 300 tarmac path
- 301 broken sandstone make-up
- 302 dark red brown sandy loam layer
- 303 reddish brown sand/sandy loam deposit
- 304 drain trench
- 305 fill of drain trench 304
- 306 drain trench
- 307 fill of drain trench
- 308 geological natural red brown clay

### *Ground reduction*

- 400 dark grey brown sandy loam topsoil
- 401 reddish brown sandy clay subsoil
- 402 north wall of vault
- 403 west wall of vault with blocked doorway
- 404 south wall of vault
- 405 east wall of vault
- 406 stone floor of vault – possibly top of another grave
- 407 rubble fill of vault
- 408 very fragmented skeleton of Sarah Thornhill
- 409 oak and zinc/tin coffin for 408
- 410 lead coffin of Rev. Charles Thornhill
- 411 stone shelf
- 412 barrel vaulting attached to north wall of vault
- 413 brick support wall around coffin 409
- 414 brick blocking
- 415 upper brick blocking
- 416 W-E support wall for shelf 411
- 417 cut for vault
- 418 fill of 417
- 419 series of iron pins protruding from wall 404

## Appendix B: Listed Building Schedule

### Building Details:

**Building Name:** CHURCH OF ST PETER  
**Parish:** COVENTRY  
**District:** COVENTRY  
**County:** WEST MIDLANDS  
**Postcode:**

### Details:

**LBS Number:** 218456  
**Grade:** II  
**Date Listed:** 24/06/1974  
**Date of Last Amendment:** 15/09/2003  
**Date Delisted:**  
**NGR:** SP3407079508

### Listing Text:

833/17/253 CANTERBURY STREET  
24-JUN-74 HILLFIELDS  
Church of St Peter  
II

Former Anglican church, disused at the time of survey (2002) and sited amongst social housing, mostly in tower blocks, close to Coventry City Centre. A new church of St Peter has been built alongside. 1840-41 to the designs of Robert Ebbesl in a pre-archaeological lancet style with some Perpendicular elements. Flemish bond red brick with brick dressings. Plan of shallow chancel, nave with W gallery with stairs in blocks flanking the W end tower; E end vestry.

**EXTERIOR:** The windows have flat-faced hoodmoulds with square terminals, some have been dressed off. Shallow sanctuary with a parapet and 4-light E window in a rustic Perpendicular style. 8-bay buttressed nave with a parapet and large lancet windows. 3-stage porch/tower with angle buttresses with set-offs and a parapet with crow-stepped battlements. Double-chamfered Tudor arched W doorway with a large 3-light W window over and tall lancets to the belfry. Square-on-plan stair blocks to the gallery to left and right have set-back buttresses, plain parapets and smaller Tudor-arched doorways. The E end vestry is low with a blocked triple lancet window.

**INTERIOR:** The sanctuary is defined by a moulded stone arch, the mouldings dying into plain responds. The chancel is defined by very plain timber rails with a memorial date of 1944. 8-bay roof of 9 closely-spaced trusses of tie beam and queen post design. The roof is unexpectedly substantial, given the 1840-41 date. Short arched braces below the tie beam are decorated with pierced quatrefoils and supported on moulded stone corbels and there are cusped braces from the queen posts to the collars. The roof is plastered behind the rafters. Very deep W gallery, canted forward in the centre. The front of the gallery has been renewed but the supports, 2 rows of cast iron columns, with additional columns at the angles, are presumably original. Cantilevered stone stairs to the galleries have iron balustrades with plain verticals and ramped handrails. Arched doorways at the W end of the nave lead to the gallery stairs and a large chamfered arch in the centre leads into the porch. Font, painted white, with an octagonal bowl carved with blind trefoils, and an octagonal stem. Font cover dated 1966. Timber pulpit, damaged, has a 1914 memorial date but appears to be integral with the wooden screening forming a SE vestry in the corner of the nave, screening dated 1929 and incorporating a projecting tester to the pulpit. Nave benches of rather unusual design with open backs and shouldered ends pierced by roundels. Some gallery benches, with very slender ends and panelled backs may be original, along with simple benches along the back wall of the nave. Brass eagle lectern. Two timber altars, both probably early C20. One, at the E end of the nave stands in front of a panelled First World War memorial incorporating lists of names.

Grade II for an unusually substantial brick town church of 1840-41, with tower. The interior has a good, but not outstanding, roof for the date and unremarkable fittings.

Sources

Pevsner, Warwickshire, 1966, 264

Listing NGR: SP3407079508

## Appendix C: Gravestones recorded

Eight gravestones were present around the perimeter of the site in 2006. Fifty nine of these were lifted and relocated. New locations 1-50 run in a line from the south to the north across the graveyard east of the church. Those marked A-D were relocated to the eastern boundary of the churchyard. Gravestones 30-39 were left in situ in the north-east part of the site and 40-50 were left in situ at the south-east of the site.

### Gravestone 1

*Former location:* North of church      *New location:* No. 47  
*Type:* Sandstone headstone with triangular top  
*Family commemorated:* Unknown      *Number commemorated* Unknown  
*Condition:* Headstone half-hidden behind heavy vegetation, inscription very worn  
*Inscription:* Illegible

### Gravestone 2

*Former location:* North of church      *New location:* No. 46  
*Type:* Sandstone headstone with triangular top  
*Family commemorated:* DEWIS      *Number commemorated* 3  
*Condition:* Headstone half-hidden behind heavy vegetation  
*Inscription:* Clear

Sacred  
TO THE MEMORY OF  
ELIZABETH  
WIFE OF GEORGE DEWIS  
WHO DIED APRIL 26 1842  
AGED 26 YEARS  
ALSO OF  
ANN MARIA  
DAUGHTER OF THE ABOVE  
WHO DIED DEC 25 1854  
AGED 15 YEARS  
ALSO OF  
GEORGE DEWIS  
WHO DIED JULY 23 1892  
AGED 79 YEARS

### Gravestone 3

*Former location:* North of church      *New location:* unknown  
*Type:* Sandstone headstone with concave pointed top (Mytum type 4806)  
*Family commemorated:* unknown      *Number commemorated* unknown  
*Condition:* Headstone half-hidden behind heavy vegetation  
*Inscription:* Almost nothing legible

JAMES [.....]  
DIED [.....]

#### Gravestone 4

*Former location:* North of church    *New location:* No. 44  
*Type:* Sandstone headstone with rounded top and rounded shoulders  
(bedstead type)  
*Family commemorated:* LEE    *Number commemorated*    2 (at least)  
*Condition:* Partly overgrown  
*Inscription:* Upper part legible; worn

IN MEMORY OF  
JOSEPH LEE  
WHO DIED MARCH 3 1853  
AGED 19 YEARS

ALSO MARY LEE  
WHO DIED DEC 17 1866  
AGED 79 YEARS  
ALSO BENJAMIN LEE  
WHO DIED [...]  
AGED [...]

#### Gravestone 5

*Former location:* North of church    *New location:* No. 43  
*Type:* Sandstone headstone with triangular top and triangular shoulders  
*Family commemorated:* NOCK    *Number commemorated*    2  
*Condition:* Partly overgrown  
*Inscription:* Upper part legible

SACRED  
TO THE MEMORY  
OF ELIZABETH  
WIFE OF WILLIAM NOCK  
WHO DEPARTED THIS LIFE  
OCTOBER 16TH 1842  
AGED 61 YEARS  
ALSO  
OF THE ABOVE  
WILLIAM NOCK  
WHO DEPARTED THIS LIFE  
JUNE [...]  
AGED [...]

### Gravestone 6

*Former location:* North of church      *New location:* No. 42  
*Type:* Sandstone headstone with flat top  
*Family commemorated:* unknown      *Number commemorated* 1  
*Condition:* Overgrown  
*Inscription:* Some legible

IN  
MEMORY OF  
SARAH DAUGH[TER] OF  
JOHN [.....NGSTON]  
WHO DEPARTED THIS LIFE  
JUNE 18[.....]  
AGED 6 YEARS]

### Gravestone 7

*Former location:* North of church      *New location:* No. 41  
*Type:* Red sandstone ledger or chest tomb top with hipped top and gothic pointed end  
*Family commemorated:* unknown      *Number commemorated* unknown  
*Condition:* Partly overgrown  
*Inscription:* Very worn; stone spalling; nothing legible

## Gravestone 8

*Former location:* North of church    *New location:* No. 40  
*Type:* Sandstone headstone with concave pointed top  
*Family commemorated:* SIDWELL    *Number commemorated* 5  
*Condition:*  
*Inscription:* Clear and legible

SACRED  
TO THE MEMORY OF  
THOMAS SIDWELL  
SON OF THOMAS B. PRATT  
WHO DEPARTED THIS LIFE  
JANUARY 8TH 1854  
AGED 16 MONTHS  
ALSO OF CLARA ANN  
DAUGHTER OF THE ABOVE  
WHO DEPARTED THIS LIFE  
AUGUST 28TH 1854  
AGED 2 MONTHS  
AND OF HENRY DAVID  
SON OF THE ABOVE  
WHO DEPARTED THIS LIFE  
SEPTEMBER 1ST 1857  
AGED 2 MONTHS  
AND OF EDWARD  
SON OF THE ABOVE  
WHO DEPARTED THIS LIFE  
JUNE 26TH 1859  
AGED 2 MONTHS  
AND OF ALFRED  
SON OF THE ABOVE  
WHO DEPARTED THIS LIFE  
MARCH [...]

### Gravestone 9

*Former location:* North of church      *New location:* No. 39  
*Type:* Slate headstone with triangular top  
*Family commemorated:* STANLEY      *Number commemorated* 2  
*Condition:* Good  
*Inscription:* Clear and legible

SACRED  
to the Memory of  
WILLIAM STANLEY  
who died Dec. 14th 1847  
AGED 41 YEARS  
ALSO OF MARY  
WIFE OF THE ABOVE  
WHO DIED APRIL 2 1850  
AGED 41 YEARS

### Gravestone 10

*Former location:* North of church      *New location:* No. 38  
*Type:* Slate headstone with rounded top  
*Family commemorated:* GOODE      *Number commemorated* 3  
*Condition:* Lichen-covered  
*Inscription:* Illegible

SACRED  
TO THE MEMORY OF  
ELOISA WIFE OF  
JOHN GOODE  
WHO DEPARTED THIS LIFE  
FEBRUARY 14TH 1843  
AGED 33 YEARS  
ALSO  
JOHN AND HENRY GOODE  
SONS OF THE ABOVE  
JOHN DEPARTED THIS LIFE  
APRIL 22ND 1850  
AGED 14 YEARS  
HENRY DEPARTED THIS LIFE  
SEPTEMBER 6TH 1850  
AGED 11 YEARS  
  
[HE....] CHESLIN ALLESLEY



### Gravestone 11

*Former location:* North of church      *New location:* No. 37  
*Type:* Slate headstone with flat top  
*Family commemorated:* HILL      *Number commemorated* 2  
*Condition:* good  
*Inscription:* Mainly decipherable

In Memory of  
JOHN HILL  
WHO DIED MAY 2ND 1844  
AGED 78 YEARS  
ALSO ANN HILL  
WIFE OF THE ABOVE  
WHO DIED JANUARY 5TH 1849  
AGED 87 YEARS

AFFLICTIONS SORE LONG TIME WE BORE  
PHYSICIANS WERE IN VAIN  
TILL DEATH DID EASE AND GOD DID PLEASE  
TO EASE ME OF MY PAIN

### Gravestone 12

*Former location:* North of church      *New location:* No. 36  
*Type:* Slate headstone with bedstead top decorated with urn  
*Family commemorated:* WILKINSON      *Number commemorated* 2  
*Condition:* Sound  
*Inscription:* Clear but worn

Sacred  
TO THE MEMORY OF  
ELIZABETH WILKINSON  
WIFE OF JOSEPH WILKINSON  
WHO DEPARTED THIS LIFE  
MAY [...] 1843 AGED 63 YEARS

ALSO OF THE ABOVE  
JOSEPH WILKINSON  
WHO DEPARTED THIS LIFE  
APRIL [...] 1865 AGED 88 YEARS

BLESSED IS HE THAT CONSIDERETH THE POOR  
THE LORD WILL DELIVER HIM IN THE TIME OF TROUBLE

ALCOTE

WARWICK ROW

### Gravestone 13

*Former location:* North of church    *New location:* No. 35  
*Type:* Slate headstone with rounded top  
*Family commemorated:* PARKER    *Number commemorated* 1  
*Condition:* Good  
*Inscription:* Clear but worn

TO THE MEMORY OF  
JOSEPH PARKER  
WHO DIED  
FEBRUARY 4TH 1844  
AGED 62 YEARS

### Gravestone 14

*Former location:* North of church    *New location:* No. 34  
*Type:* Slate headstone with rounded top  
*Family commemorated:* COOPER/BURTON    *Number commemorated* 3  
*Condition:* Good  
*Inscription:* Clear but worn

Erected  
TO THE MEMORY OF  
MARY WIFE OF  
JOHN COOPER  
WHO DIED FEB [...] 1847  
AGED 57 YEARS

[.....]  
[.....]  
[.....]  
MY LOT'S

SELINA BURTON  
GRANDDAUGHTER [.....] SEP 28TH 18[...]  
WHO DIED AGED 6 MONTHS  
ALSO JOHN COOPER  
HUSBAND OF THE ABOVE  
WHO DIED APRIL 19 18[...]  
AGED 52 YEARS

ALL BELOW I BID FAREWELL  
MOTHER AND CHILDREN LOVED SO WELL  
I'VE LEFT YOU ALL TO DWELL ABOVE  
THINK ON EACH OTHER, LIVE IN LOVE

**Gravestone 15**

*Former location:* North of church    *New location:* No. 33  
*Type:* Granite headstone  
*Family commemorated:* BAKEWEED?    *Number commemorated* At least 3  
*Condition:* Damaged  
*Inscription:* Very worn; traces

[.....]

ALSO THOMAS  
WHO DIED  
AGED 71 YEARS  
ALSO MARY BAKEWEED  
DAUGHTER OF THE ABOVE WHO DIED FEB 8TH 1911

**Gravestone 16**

*Former location:* North of church    *New location:* No. 32  
*Type:* Sandstone headstone with rounded top  
*Family commemorated:* MILES    *Number commemorated* 4  
*Condition:* Stone spalling  
*Inscription:* Traces; floral decoration at top – leaves and branches

Sacred  
TO THE MEMORY OF  
MARTHA  
DAUGHTER OF  
HENRY & BITHIAH MILES  
JULY 10TH 1846  
AGED 1 MONTH  
ALSO  
ANN BITHIAH  
DAUGHTER OF THE ABOVE  
WHO DIED SEPT 12TH 1851  
AGED 6 MONTHS  
THESE LOVELY [.....  
..] FOND ILL [...] OF HIS [...]..  
JU[.....  
...] ON HIGH [.....  
SHALL LIVE [.....

Also  
HENRY MILES  
WHO DIED JUNE 9TH 1864  
AGED 44 YEARS  
Also  
BITHIAH  
RELICT OF THE ABOVE  
WHO DIED OCT 1ST 1865  
AGED [.]9 YEARS  
MAY THERE BE FOUND NO WANDERER  
LOST  
[.....].IN HEAVEN

### Gravestone 17

*Former location:* North of church    *New location:* No. 31  
*Type:* Sandstone headstone with cross-shaped shaft  
*Family commemorated:* Unknown    *Number commemorated* 1  
*Condition:* Leaning and falling apart/incomplete  
*Inscription:* Traces

Edward Mir[...]

Born  
27 Feb 1820  
Died 13th Mar 1845

### Gravestone 18

*Former location:* North of church    *New location:* No. 30  
*Type:* Slate sarcophagus lid  
*Family commemorated:* THORNHILL    *Number commemorated* 3  
*Condition:* Good  
*Inscription:* Mint

UNDERNEATH ARE INTERRED THE REMAINS OF THE  
REV. CHARLES THORNHILL  
INCUMBENT OF ST PETERS COVENTRY  
BORN APRIL 3RD 1807  
DIED (AT TUNBRIDGE WELLS) OCTOBER 27TH 1862  
  
ALSO OF EMILY ALICE THORNHILL  
DIED AT LEAMINGTON NOV 29TH 1879  
AGED 57 YEARS

There is also part of an inscription on the side of the monument, of which only the name John is visible.

### Gravestone 19

*Former location:* North of church      *New location:* No. 16  
*Type:* Slate headstone with pointed top  
*Family commemorated:* JELLINGS      *Number commemorated* 2  
*Condition:* Overgrown  
*Inscription:* Mainly decipherable

Sacred  
TO THE MEMORY OF  
HANNAH WIFE OF  
THOMAS HENRY JELLINGS  
WHO DIED DEC 19 1858  
AGED 38 YEARS  
Also ELIZABETH Daughter of the above  
AGED 3 MONTHS

### Gravestone 20

*Former location:* North of church      *New location:* No. 29  
*Type:* Slate headstone with pointed top  
*Family commemorated:* GARRATT      *Number commemorated* 3  
*Condition:* Good  
*Inscription:* Mainly decipherable

SACRED  
TO THE MEMORY OF  
JOSEPH GARRATT  
DIED 23RD APRIL 1851  
AGED 72  
ALSO OF  
HANNAH GARRATT  
WIFE OF THE ABOVE  
WHO DIED OCTOBER 14TH 1857  
AGED 77  
THESE LANGUISHING HEADS ARE AT REST  
THEIR THINKING AND ACHING ARE O'ER  
THESE QUIET INMOVEABLE BREASTS  
ARE HEAVED BY AFFLICTIONS NO MORE  
THESE HEARTS ARE NO LONGER THE SEAT  
OF TROUBLE OR TORTURING PAIN  
THEY HAVE CEASED TO FLUTTER AND BEAT  
THEY NEVER WILL FLUTTER AGAIN  
Also of  
HENRY YEARWOOD GARRATT  
SON OF THE ABOVE  
WHO DIED SEPTEMBER 7TH 1860  
AGED 53

### Gravestone 21

*Former location:* North of church      *New location:* No. 28  
*Type:* Slate headstone with pointed top  
*Family commemorated:* HUSON      *Number commemorated* 3  
*Condition:* Worn  
*Inscription:* Clear but worn

IN  
MEMORY OF  
JAMES HUSON  
WHO DIED JUNE 12TH 1850  
AGED 38  
MARIA HIS DAUGHTER  
DIED JAN<sup>y</sup> 5<sup>TH</sup> 1851  
AGED 11 MONTHS  
RESPECTED MOST BY THOSE WHO  
KNEW HIM BEST

**Gravestone 22**

*Former location:* North of church      *New location:* No. 27  
*Type:* Slate headstone with pointed top  
*Family commemorated:* ROSE      *Number commemorated* 3  
*Condition:* Partly overgrown; leaning slightly  
*Inscription:* Mint

SACRED  
TO THE MEMORY  
OF  
ALFRED ROSE  
WHO DIED JAN 6 1855  
AGED 39 YEARS  
ALSO OF CHARLES  
SON OF THE ABOVE  
WHO DIED JAN 3 1851  
AGED 6 YEARS  
AND OF EDWIN  
SON OF THE ABOVE  
WHO DIED MARCH 12 1861  
AGED 17 YEARS

ALCOTT

### Gravestone 23

*Former location:* North of church    *New location:* No. 21  
*Type:* Slate headstone with pointed top  
*Family commemorated:* WHORALL    *Number commemorated* 1  
*Condition:* Partly overgrown and leaning  
*Inscription:* Clear but worn

Sacred  
TO THE MEMORY OF  
THOMAS WHORALL  
WHO DEPARTED THIS LIFE  
MAY 30 1846 AGED 29 YEARS

### Gravestone 24

*Former location:* North of church    *New location:* No. 20  
*Type:* Grey slate headstone with triangular top decorated with a cross  
*Family commemorated:* HARRIS    *Number commemorated* 3  
*Condition:* Good  
*Inscription:* Mainly decipherable; decoration includes cross in crest at apex and  
?laurel branches

IN  
AFFECTIONATE REMEMBRANCE OF  
LOUISA HARRIS  
WHO DIED JULY 30 1854  
AGED 13 YEARS

ALSO  
SARAH HARRIS  
MOTHER OF THE ABOVE  
WHO DIED AUGUST 2ND 1855  
AGED 50 YEARS

AFFLICTIONS SORE LONG TIME WE BORE  
PHYSICIANS WERE IN VAIN  
TILL DEATH DID EASE AND GOD DID PLEASE  
TO EASE ME OF MY PAIN

**Gravestone 25**

*Former location:* North of church    *New location:* No. 19  
*Type:* Slate headstone with triangular top  
*Family commemorated:* STANLEY    *Number commemorated* 2  
*Condition:*  
*Inscription:* Clear but worn

Sacred  
TO THE MEMORY OF  
WILLIAM STANLEY  
who departed this life  
Dec- 10<sup>TH</sup> 1848  
AGED 55 YEARS  
ALSO OF  
SOPHIA STANLEY  
WIFE OF THE ABOVE  
who departed this life  
October 6<sup>TH</sup> 1852  
AGED 50 YEARS



**Gravestone 26**

*Former location:* North of church      *New location:* No. 18  
*Type:* Slate headstone  
*Family commemorated:* COLLIER      *Number commemorated* 4  
*Condition:* Overgrown  
*Inscription:* Mainly decipherable

Sacred  
TO THE MEMORY OF  
THOMAS COLLIER  
WHO DEPARTED THIS LIFE  
APRIL 2ND 1855  
AGED 48 YEARS  
[.....]  
[.....]  
[.....]  
[.....]  
ALSO OF HARRIET  
WIFE OF THE ABOVE  
WHO DEPARTED THIS LIFE  
NOV 28 1855  
AGED 49 YEARS  
ALSO OF  
WILLIAM HENRY COLLIER  
WHO DIED FEB 24 1875  
AGED 59 YEARS  
THERE IS REST AND JOY FOREVER  
ALSO OF ANN COLLIER  
WIFE OF THE ABOVE  
WHO DIED MAY 19 1859  
AGED 75 YEARS  
INTERRED IN COVENTRY CEMETERY  
MAY 23 1889

### Gravestone 27

*Former location:* North of church    *New location:* No. 17  
*Type:* Slate headstone  
*Family commemorated:* REYNOLDS    *Number commemorated* 4  
*Condition:* Good  
*Inscription:* Clear but worn

In Memory of  
Joseph Reynolds  
who died July 26th 1866  
Aged 72 years  
And of  
Mary Reynolds  
his wife  
who died January 28th 1849  
Aged 52 years  
Also of  
Sarah Reynolds  
their daughter  
who died July 16th 1842  
Aged 20 years  
Also of  
Mary Reynolds  
second wife of Joseph Reynolds  
who died October 25th 1863  
Aged 59 years

### Gravestone 28

*Former location:* North of church    *New location:* No. 48  
*Type:* Slate headstone with curved top  
*Family commemorated:* BURBIDGE    *Number commemorated* 1  
*Condition:* Overgrown  
*Inscription:* Mint

Sacred  
TO THE MEMORY OF  
MARY BURBIDGE  
WHO DIED AUGUST 10TH  
1846 AGED 18 YEARS

### Gravestone 29

*Former location:* North of church    *New location:* No. 50  
*Type:* Sandstone headstone with triangular top  
*Family commemorated:* Unknown    *Number commemorated* Unknown  
*Condition:* Partly overgrown  
*Inscription:* Traces

### Gravestone 30

*Location:* North-east of church. still in situ  
*Type:* Sandstone headstone with triangular top  
*Family commemorated:* ALCOCK    *Number commemorated* 1  
*Condition:* Overgrown; in situ  
*Inscription:* Clear but worn

IN  
AFFECTIONATE REMEMBRANCE  
OF  
REBECCA  
THE BELOVED WIFE OF  
EDWARD ALCOCK  
WHO DEPARTED THIS LIFE  
AUGUST 29TH 1845  
IN THE 32ND YEAR OF HER AGE

Take ye heed, watch and pray  
For ye know not when the time is

### Gravestone 31

*Location:* North-east of church. still in situ  
*Type:* Slate headstone with bedstead top decorated with urn  
*Family commemorated:* GLENNAN *Number commemorated* 2  
*Condition:* Overgrown; in situ  
*Inscription:* Clear but worn

Sacred  
TO THE MEMORY OF  
MR JOHN GLENNAN  
WHO DEPARTED THIS LIFE  
JANUARY 30TH 1843  
AGED 21 YEARS  
REQUIESAT IN PEACE

AND ALSO OF  
MARY GLENNAN  
MOTHER OF THE ABOVE  
WHO DIED JULY 21ST 1848  
AGED 54 YEARS

ALCOTT

### Gravestone 32

*Location:* North-east of church. still in situ  
*Type:* Slate headstone; lancet shape  
*Family commemorated:* MILLS *Number commemorated* 3  
*Condition:* Overgrown; in situ  
*Inscription:* Clear but worn. Rear of stone also inscribed

Front inscription:

The family vault  
of  
M<sup>R</sup> THOMAS MILLS  
WHO DIED JULY 27TH 1865  
AGED 81 YEARS

FRANCES MILLS  
HIS WIDOW  
DIED APRIL 21 1867  
AGED 78 YEARS

Rear inscription:

In Memory of  
ANN ILIEFF  
who died  
SEPTEMBER 21<sup>ST</sup> 1849  
AGED 22 YEARS

### Gravestone 33

*Location:* North-east of church. still in situ  
*Type:* Slate headstone with triangular top  
*Family commemorated:* REAVES *Number commemorated* 1  
*Condition:* In situ; leaning  
*Inscription:* Clear but worn

IN  
AFFECTIONATE REMEMBRANCE  
OF JOSEPH REAVES  
WHO DIED AUGUST 22 1845  
AGED 11 YEARS

### Gravestone 34

*Location:* North-east of church. still in situ  
*Type:* Sandstone headstone with rounded top  
*Family commemorated:* Unknown *Number commemorated* Unknown  
*Condition:* Overgrown; in situ  
*Inscription:* Illegible – nothing visible

### Gravestone 35

*Location:* North-east of church. still in situ  
*Type:* Sandstone headstone with curved top  
*Family commemorated:* GILL *Number commemorated* 3  
*Condition:* Overgrown; in situ  
*Inscription:* Not clearly legible

IN  
[.....]  
THOMAS GILL  
WHO DIED APRIL [18]89  
AGED 65 YEARS  
[ALSO]  
SARAH [WIFE OF THE ABOVE]  
WHO DIED [M...] 1865  
AGED [...] YEARS  
[AND]  
MARY ANN GILL  
DAUGHTER OF THE ABOVE  
WHO DIED MAY 2[...] [18.]5  
AGED 36 YEARS

### Gravestone 36

*Location:* North-east of church. still in situ  
*Type:* Sandstone headstone with curved, decorated top and floral carving  
*Family commemorated:* GREENAWAY *Number commemorated* 2  
*Condition:* Overgrown; in situ  
*Inscription:* Mainly decipherable

Maria  
the beloved wife of  
John Greenaway  
who died July 2[.] 1859  
Aged 19 years  
also of  
John Greenaway  
[.....]

### Gravestone 37

*Location:* North-east of church. still in situ  
*Type:* Slate headstone with pointed, decorative top  
*Family commemorated:* KNIGHT *Number commemorated* 2  
*Condition:* Overgrown; in situ  
*Inscription:* Clear but worn

Erected  
IN RESPECTFUL REMEMBRANCE OF  
THOMAS KNIGHT  
WHO DIED FEB<sup>y</sup> 21 1856  
AGED 48 YEARS  
[ ]ALSO OF  
]ELIZABETH KNIGHT  
]MOTHER OF THE ABOVE  
]WHO DIED JAN<sup>y</sup> 25 1851  
]AGED 79 YEARS

### Gravestone 38

*Location:* North-east of church. still in situ  
*Type:* Slate chest tomb top, lettering running longways down slab  
*Family commemorated:* Unknown *Number commemorated* 2  
*Condition:* In situ; on its side  
*Inscription:* Mainly decipherable

IN THE FAMILY VAULT [...]  
LIE THE REMAINS OF THOMAS [...]  
WHO WAS BORN AT BURT[...]  
LEICESTERSHIRE, NOVEMBER [...]  
9TH 1845 IN THE 70TH YEAR [OF HIS LIFE]  
ALSO ANN, WIFE OF BENJAMIN [...]  
AND RELICT OF THE ABOVE THOMAS [...]  
DIED DEC 3RD 1871 AGED 71 [YEARS]

### Gravestone 39

*Location:* North-east of church. still in situ  
*Type:* Slate CHEST TOMB TOP, LETTERING RUNNING LONGWAYS DOWN SLAB  
*Family commemorated:* ROLLASON *Number commemorated* 2  
*Condition:* Overgrown; in situ; on its side  
*Inscription:* Mint

SARAH ANN ROLLASON  
BORN AUGUST 9TH 1841  
DIED SEPTEMBER 26TH 1842

MAR[.....]  
DIED [.....]  
IN 11[.....]

### Gravestone 40

*Location:* South-east of church, still in situ  
*Type:* Slate headstone, decorated, moulded top  
*Family commemorated:* GREENAWAY *Number commemorated* 2  
*Condition:* Overgrown; in situ  
*Inscription:* Clear but worn

In Loving Memory of  
GEORGE  
SON OF GEORGE  
AND MARY GREENAWAY  
WHO DIED OCT 16 1848 AGED 18 YEARS  
ALSO HIS  
MOTHER MARY GREENAWAY  
WHO DIED JAN 7<sup>TH</sup> 1866  
AGED 67 YEARS



## Gravestone 41

*Location:* South-east of church, still in situ

*Type:* Slate headstone, bedstead type

*Family commemorated:* PEGG *Number commemorated* 2

*Condition:* Overgrown, lichen covered

*Inscription:* Mainly decipherable

IN  
Affectionate Remembrance of  
JAMES PEGG  
WHO DEPARTED THIS LIFE  
MARCH THE 2<sup>ND</sup> 1858  
IN THE 68<sup>TH</sup> YEAR OF HIS AGE.  
ALSO OF  
ELIZABETH PEGG  
WIFE OF THE ABOVE  
WHO DIED MAY 20<sup>TH</sup> 1871  
AGED 85 YEARS

## Gravestone 42

*Location:* South-east of church, still in situ

*Type:* Slate headstone, flat top

*Family commemorated:* NEWARK    *Number commemorated*    4

*Condition:* Overgrown; in situ

*Inscription:* Mint

SACRED TO THE MEMORY OF  
MARY EDWARDS NEWARK  
WHO DEPARTED THIS LIFE  
NOVEMBER 25TH 1846  
IN THE 17TH YEAR OF HER AGE

*"BE NOT SLOTHFUL BUT FOLLOWERS OF THEM  
WHO THROUGH FAITH AND PATIENCE, INHERIT  
THE PROMISES"*

ALSO ANNE DAVIES NEWARK  
WHO DEPARTED THIS LIFE  
JUNE 3RD 1852 AGED 20  
THE GIFT OF GOD IS ETERNAL LIFE THROUGH  
JESUS CHRIST OUR LORD  
ALSO JOHN NEWARK  
FATHER OF THE ABOVE  
WHO DEPARTED THIS LIFE  
MAY 6TH 1861 AGED 67  
ALL THAT THE FATHER GIVETH ME SHALL COME  
TO ME AND HIM THAT COMETH TO ME I WILL IN NO  
WISE CAST OUT  
ALSO MARY DAVIES  
WIDOW OF THE ABOVE

### Gravestone 43

*Location:* South-east of church, still in situ  
*Type:* Slate headstone, flat top  
*Family commemorated:* ROSE *Number commemorated* 3  
*Condition:* Overgrown; in situ  
*Inscription:* Mint

SACRED  
TO THE MEMORY OF  
ANN ROSE  
WIFE OF CHARLES ROSE  
WHO DIED AUG 22 1846  
AGED 51 YEARS  
ALSO OF  
FRANCES DOROTHY ANN  
DAUGHTER OF THE ABOVE  
WHO DIED MARCH 8 1864  
AGED 28 YEARS  
ALSO OF  
CHARLES GRAHAM ROSE  
[...]

### Gravestone 44

*Location:* South-east of church, still in situ  
*Type:* Slate headstone, flat top  
*Family commemorated:* WALTON *Number commemorated* 4  
*Condition:* Overgrown; in situ  
*Inscription:* Mint

IN  
LOVING MEMORY OF  
JOSEPH WALTON  
DIED JULY 17<sup>TH</sup> 1845 AGED 5 YEARS  
ALSO ANN WALTON  
DIED DEC 16<sup>TH</sup> 1846 AGED 2 YEARS  
ALSO OF SARAH WIFE OF  
JOSEPH WALTON  
DIED FEB 10<sup>TH</sup>, 1889 AGED 77 YEARS  
ALSO OF JOSEPH WALTON  
DIED DEC 31<sup>ST</sup>, 1898 AFED 85 YEARS

### Gravestone 45

*Location:* South-east of church, still in situ  
*Type:* Slate headstone, flat top, decorated with cross  
*Family commemorated:* Unknown    *Number commemorated*    2  
*Condition:* Overgrown; in situ  
*Inscription:* Mint

I H S

IN THIS VAULT ARE DEPOSITED  
THE REMAINS OF  
MARGARET LOUISA  
THE BELOVED WIFE OF THE  
REV. ANNESLEY PAUL HUGHES MA  
(FIRST INCUMBENT OF THIS CHURCH)  
AND FIFTH DAUGHTER OF JACOB OWEN  
MOUNTJOY SQUARE  
IN THE CITY OF DUBLIN ESQ'.  
[.....]

### Gravestone 46

*Location:* South-east of church, still in situ  
*Type:* Slate headstone, flat top  
*Family commemorated:* FAWSON    *Number commemorated*    3  
*Condition:* Overgrown; in situ  
*Inscription:* Mint

SACRED  
TO THE MEMORY OF  
EMMA DAUGHTER OF  
SAMUEL & SARAH FAWSON  
WHO DEPARTED THIS LIFE  
NOVEMBER 17<sup>TH</sup> 1846  
AGED 18 YEARS  
ALSO OF  
SAMUEL FAWSON  
FATHER OF THE ABOVE  
WHO DEPARTED THIS LIFE  
MARCH 1<sup>ST</sup> 1855  
AGED 68  
AND OF  
SARAH FAWSON  
[.....]

### Gravestone 47

*Location:* South-east of church, still in situ  
*Type:* Sandstone headstone, pointed top surmounted by circle  
*Family commemorated:* Unknown    *Number commemorated*    At least 1  
*Condition:* Worn; in situ  
*Inscription:* Traces

[.....]  
Affection  
SARA[H.....]  
WHO D[IED.....]  
AG[ED.....]  
[.....]  
[.....]

### Gravestone 48

*Location:* South-east of church, still in situ  
*Type:* Slate headstone, bedstead type  
*Family commemorated:* SPICER    *Number commemorated*    2  
*Condition:* Overgrown; in situ  
*Inscription:* Mint

Erected  
TO THE MEMORY OF  
LUCY  
Wife of  
CHARLES SPICER  
WHO DIED DEC.<sup>R</sup> 1<sup>ST</sup> 1851  
AGED 62 YEARS  
Also of the above  
CHARLES SPICER  
WHO DIED JAN.<sup>Y</sup> 1. 1860  
AGED 66 YEARS

**Gravestone 49**

*Location:* South-east of church, still in situ  
*Type:* Slate headstone, triangular top  
*Family commemorated:* THOMPSON *Number commemorated* 2  
*Condition:* Overgrown; in situ  
*Inscription:* Mint

IN  
MEMORY OF  
MARY ANN THOMPSON  
WHO DIED APRIL 23. 1852  
AGED 27  
ALSO OF ROSANNA,  
WIFE OF  
WILLIAM COPESTAKES  
AND MOTHER OF THE ABOVE  
WHO DIED AUGUST 7. 1856  
AGED 63.

**Gravestone 50**

*Location:* South-east of church, still in situ  
*Type:* Slate headstone, sinuous top, decorated  
*Family commemorated:* RUSH *Number commemorated* 3  
*Condition:* Overgrown; in situ  
*Inscription:* Clear but worn

In the affectionate memory of  
ELLEN ELIZABETH  
DAUGHTER OF  
WILL.<sup>M</sup> AND ELIZ.<sup>H</sup> RUSH  
WHO DEPARTED THIS LIFE  
JULY 23RD 1854  
AGED 1 YEAR & 7 MONTHS  
Also of  
HERBERT WALTER RUSH  
WHO DEPARTED THIS LIFE  
DECEMBER 3RD 1867  
AGED 11 YEARS  
WHEN CALLED OF GOD WITH SUCH A SON TO PART  
THERE'S NONE BUT GOD CAN RECONCILE THE HEART  
Also of  
WILLIAM RUSH  
WHO DEPARTED THIS [LIFE.....]  
[.....]

### Gravestone 51

*Former location:* South of church      *New location:* No. 14  
*Type:* Slate headstone, triangular top  
*Family commemorated:* KINGLERY      *Number commemorated* 1  
*Condition:* Good  
*Inscription:* Half illegible/destroyed

Sacred  
TO THE MEMORY OF  
MARY KINGLERY  
DIED 24. DEC.<sup>R</sup> 1850  
AGED 64  
[...]  
[...]

### Gravestone 52

*Former location:* South of church      *New location:* No. 1  
*Type:* Sandstone headstone  
*Family commemorated:* HOWES/HEWITT      *Number commemorated* 4  
*Condition:* Overgrown  
*Inscription:* Mainly decipherable

In Affectionate Remembrance  
Of  
FRANCIS HOWES  
WHO DIED SEPTEMBER 10 1866  
AGED 42 YEARS  
ALSO  
FRANCIS HEWITT  
WHO DIED  
AGED 24 YEARS  
ALSO MARY HOWES  
WIFE OF THE ABOVE  
WHO DIED JUNE 14 1890  
IN HER 90TH YEAR  
HER END WAS PEACE  
ALSO ELIZABETH WIFE OF WILLIAM HEWITT  
WHO DIED JUNE 22 1901  
AGED 74 YEARS

### Gravestone 53

*Former location:* South of church    *New location:* B  
*Type:* Slate headstone, triangular top with cross and foliage motif  
*Family commemorated:* CALDICOTT    *Number commemorated* 3  
*Condition:* Overgrown  
*Inscription:* Clear but worn

IN  
AFFECTIONATE REMEMBRANCE OF  
MARTHA  
WIFE OF THOMAS CALDICOTT  
WHO DIED JULY 14. 1819  
AGED 43 YEARS  
ALSO  
ELIZABETH, HIS SECOND WIFE  
WHO DIED OCT.<sup>R</sup> 3. 1855  
AGED 72 YEARS  
ALSO OF THE ABOVE  
THOMAS CALDICOTT  
WHO DIED NOV.<sup>R</sup> 21. 1858  
AGED 74 YEARS

PLATT

### Gravestone 54

*Former location:* South of church    *New location:* No. 25  
*Type:* Slate headstone, SINUOUS TOP  
*Family commemorated:* MALIN    *Number commemorated* 1  
*Condition:* Overgrown, LICHEN COVERED  
*Inscription:* Clear but worn/lichen covered

IN  
MEMORY OF  
JOHN MALIN  
WHO DIED  
OCTOBER 24<sup>TH</sup> 1850  
AGED 19 YEARS



### Gravestone 55

*Former location:* South of church      *New location:* No. 2  
*Type:* Slate headstone, sinuous top  
*Family commemorated:* GILL      *Number commemorated* 5  
*Condition:* Overgrown, lichen covered  
*Inscription:* Clear but worn/lichen covered

In Loving Memory  
of  
WILLIAM GILL  
WHO DIED MARCH 2<sup>ND</sup> 1893  
AGED 86 YEARS  
MARIA WIFE OF THE ABOVE  
WHO DIED AUG. 14<sup>TH</sup> 1882  
AGED 51 YEARS  
WILLIAM SON OF THE ABOVE  
WHO DIED AUG. 3<sup>RD</sup> 1852  
AGED 9 WEEKS  
MARY ANN DAUGHTER OF THE ABOVE  
WHO DIED APRIL 7<sup>TH</sup> 1863  
AGED 2 YEARS  
ALSO MARIA DAUGHTER OF THE ABOVE  
WHO DIED APRIL 20<sup>TH</sup> 1843  
AGED 8 YEARS

### Gravestone 56

*Former location:* South of church      *New location:* No. 3  
*Type:* Sandstone headstone, triangular top  
*Family commemorated:* BELFIELD      *Number commemorated* At least 2  
*Condition:* Overgrown, lichen covered  
*Inscription:* Mainly decipherable

In  
Affectionate  
Remembrance of  
THOMAS BELFIELD  
BORN AT MATLOCK  
MARCH 29 1809  
DIED AT COVENTRY  
MAY 20 1858  
WHOM THE LORD LOVETH HE CHASTENETH  
ALSO [O]F  
CATHERINE GRAHAM EVANS  
RELICT [.....]

### Gravestone 57

*Former location:* South of church      *New location:* No. 4  
*Type:* Slate headstone, concave shoulders and pointed top  
*Family commemorated:* BROWN      *Number commemorated* 1  
*Condition:* Sound, overgrown  
*Inscription:* Clear but worn

IN  
MEMORIAM  
LAURA BROWN  
WHO DIED JAN<sup>Y</sup> 16<sup>TH</sup> 1881  
AGED 54 YEARS  
TO GOD

### Gravestone 58

*Former location:* South of church      *New location:* No. 5  
*Type:* Slate headstone, sinuous top  
*Family commemorated:* BARNES      *Number commemorated* 1  
*Condition:* Overgrown  
*Inscription:* Clear but worn

SACRED  
TO THE MEMORY OF  
WILLIAM BARNES  
AN EXCISE OFFICER OF THIS CITY  
WHO DEPARTED THIS LIFE  
APRIL 8TH 1852  
AGED 74 YEARS

### Gravestone 59

*Former location:* South of church      *New location:* C  
*Type:*  
*Family commemorated:* WIGSTON      *Number commemorated* 3  
*Condition:* Overgrown; lichen covered  
*Inscription:* Clear but worn

BENEATH  
THE REMAINS  
OF  
THOMAS WIGSTON  
WHO DEPARTED THIS LIFE  
MARCH 15TH 1861  
AGED 62 YEARS  
ALSO  
SARAH WIGSTON  
HIS WIDOW  
WHO DIED JANUARY 25TH 1883  
AGED 85 YEARS  
ALSO OF THOMAS WIGSTON  
SON OF THE ABOVE  
WHO DIED APRIL 3RD 1884  
AGED 50 YEARS

### Gravestone 60

*Former location:* South of church      *New location:* No. 6  
*Type:* Slate headstone, rounded top  
*Family commemorated:* WATTS      *Number commemorated* 2  
*Condition:* Overgrown  
*Inscription:* Illegible

In Affectionate Remembrance of  
ELIZABETH WIFE OF  
JOHN WATTS  
WHO DIED DEC. 14 1871  
AGED 49 YEARS  
ALSO  
JOHN WATTS  
[.....]

## Gravestone 61

*Former location:* South of church      *New location:* No. 7  
*Type:* Sandstone headstone, rounded top  
*Family commemorated:* Unknown      *Number commemorated* Unknown  
*Condition:* Overgrown  
*Inscription:* Illegible

[I] H S  
[.....SPE]  
[.....24]

## Gravestone 62

*Former location:* South of church      *New location:* No. 8  
*Type:* Slate headstone, rounded top  
*Family commemorated:* DRAPER      *Number commemorated* 3  
*Condition:* Falling apart at top  
*Inscription:* Mint

In [.....]  
Of  
MARTHA DRA[PER]  
WIFE OF JOHN DRAPER  
WHO DEPARTED THIS LIFE  
APRIL 14 1875  
AGED 65 YEARS  
ALSO OF  
JOHN DRAPER  
HUSBAND OF THE ABOVE  
WHO DIED APRIL 28 1882  
IN HIS 80 YEAR  
ALSO  
JOHN SON OF THE ABOVE  
LATE OF DURHAM HOUSE KERESLEY  
WHO DIED AUG 21 1885  
[AG]ED 33 YEARS  
[WHAT I] DO THOU KNOWEST NOT NOW  
[BUT T]HOU SHALT KNOW HEREAFTER

TAYLOR

### Gravestone 63

*Former location:* South of church      *New location:* A  
*Type:* Slate headstone, rounded top  
*Family commemorated:* BYWATER      *Number commemorated* 2  
*Condition:* Damaged at top  
*Inscription:* Mint

[.....]  
of  
JOSEPH BYWATER  
DIED DECEMBER 15 [....]  
AGED 56 YEARS  
WHATSOEVER THY HAND FINDETH TO DO DO IT  
WITH THY MIGHT  
ALSO OF  
HANNAH BYWATER  
WIFE OF THE ABOVE  
WHO DIED JULY 31ST 1878  
AGED 63 YEARS  
FOR GOD HATH NOT APPOINTED US TO  
WRATH BUT TO OBTAIN SALUTATION  
BY OUR LORD JESUS CHRIST

### Gravestone 64

*Former location:* South of church      *New location:* No. 9  
*Type:* Slate headstone, rounded top  
*Family commemorated:* KING      *Number commemorated* 3  
*Condition:* Overgrown  
*Inscription:* Clear but worn

In Affectionate Remembrance  
Of  
BARKER KING  
WHO DIED MAY 29 1873  
AGED 67 YEARS  
ALSO OF ANN  
WIFE OF THE ABOVE  
WHO DIED MAY 25 1875  
AGED 70 YEARS  
THERE SHALL BE NO MORE DEATH  
NEITHER SORROW NOR CRYING NEITHER  
SHALL THERE BE ANY MORE PAIN  
LORD JESUS RECEIVE MY SPIRIT  
  
ALSO JOHN KING  
SON OF THE ABOVE  
WHO DIED JUNE 12 1900  
AGED 53 YEARS

### Gravestone 65

*Former location:* South of church      *New location:* No. 10  
*Type:* Slate headstone, triangular top  
*Family commemorated:* ANSTEY      *Number commemorated* 2

*Condition:* Overgrown; lichen covered  
*Inscription:* Mainly decipherable

Sacred  
TO THE MEMORY OF  
ANN ANSTEY  
WHO DEPARTED THIS LIFE  
THE 28TH OF JANUARY 1851  
AGED 68 YEARS  
ALSO OF JOSEPH ANSTEY  
HUSBAND OF THE ABOVE  
WHO DEPARTED THIS LIFE  
THE 28TH SEPTEMBER 1853  
AGED 78 YEARS  
[.....]

**Gravestone 66**

*Former location:* South of church      *New location:* No. 11  
*Type:* Sandstone headstone with lead-filled letters  
*Family commemorated:* MANDER      *Number commemorated* 4  
*Condition:* Good  
*Inscription:* Clear but worn

In Loving Memory  
Of  
WILLIAM MANDER  
WHO DIED JUNE 13TH 1906  
AGED 86 YEARS  
ALSO OF MARY ANN  
WIFE OF THE ABOVE  
WHO DIED FEBRUARY 22ND 1886  
AGED 62 YEARS

PEACE PERFECT PEACE

ALSO HANNAH AND HERBERT, CHILDREN OF THE ABOVE  
WHO DIED IN INFANCY

### Gravestone 67

*Former location:* South of church      *New location:* D  
*Type:* Slate headstone  
*Family commemorated:* CARVER      *Number commemorated* 3  
*Condition:* Overgrown  
*Inscription:* Mainly decipherable

IN  
Affectionate Remembrance  
Of  
LOUISA MAY CARVER  
SECOND AND BELOVED DAUGHTER OF  
WM AND FANNY CARVER  
WHO DIED FEBRUARY 2ND 1872  
AGED 20 YEARS

Her young spirit's gone above  
Her father's joy, her mother's love  
She was not sent on earth to stay  
For angels beckoned her away

ALSO OF  
WILLIAM CARVER  
WHO ENTERED INTO REST APRIL 25TH 1886  
AGED 65 YEARS  
ALSO OF  
FANNY CARVER  
WIDOW OF THE ABOVE  
WILLIAM CARVER  
WHO FELL ASLEEP OCTOBER 20TH 1888  
AGED 67 YEARS

TOMLINSON & TAYLOR

### Gravestone 68

*Former location:* South of church      *New location:* No. 24  
*Type:*  
*Family commemorated:* THORNTON      *Number commemorated* 1  
*Condition:* Overgrown  
*Inscription:* Mainly decipherable

In Affectionate Remembrance  
Of  
ANN THORNTON  
WHO DEPARTED THIS LIFE  
DEC 24 1868 AGED 68  
Blessed are the dead that die in the Lord

### Gravestone 69

*Former location:* South of church      *New location:* No. 12  
*Type:* Sandstone headstone, rounded top  
*Family commemorated:* SPRIGG      *Number commemorated* 1  
*Condition:* Overgrown; falling apart near base

*Inscription:* Clear but worn

IN MEMORY OF  
MATTHEW SPRIGG  
WHO DIED MARCDH 3RD 1853  
AGED 73

**Gravestone 70**

*Former location:* North of church      *New location:* E  
*Type:* Slate headstone, scalloped top  
*Family commemorated:* RUSSELL      *Number commemorated* 1  
*Condition:* Overgrown; incomplete, lower part broken off  
*Inscription:* Mainly decipherable

IN  
AFFECTIONATE  
REMEMBRANCE  
OF  
RICHARD RUSSELL  
APRIL 21ST 1862 AGED 51 YEARS  
THOU ART GONE TO THE GRAVE WE  
NO LONGER DEPLORE THEE  
WHOSE GOD WAS THY RANSOM, THY  
GUARDIAN AND GUIDE  
HE GAVE THEE, HE TOOK [THEE AND]  
HE WILL RESTORE T[HEE]  
AND DEATH HAS [NO STING FOR THE SAVIOUR HAS DIED]



**Gravestone 71**

*Former location:* South of church  
*Type:* Slate headstone, lancet top  
*Family commemorated:* DIXON  
*Condition:* Fair  
*Inscription:* Mainly decipherable

*New location:* No. 14  
*Number commemorated* 6

In  
Affectionate  
Remembrance  
of

EDWARD DIXON  
WHO DEPARTED THIS LIFE  
APRIL 7 1877  
AGED 72 YEARS

BELOVED IN LIFE  
[REMEMBERED] IN DEATH

MARY DIXON  
BORN MAY 8 1804  
DIED APRIL 1882  
FAREWELL UNTIL WE MEET IN  
HEAVEN

MARY ANN DIXON  
WHO DIED OCT 25 1903  
AGED 66 YEARS

HANNAH DIXON  
WHO DIED MARCH [...] 1873  
AGED 32 YEARS

EDWARD DIXON  
WHO DIED MARCH 1 1875  
AGED 8 MONTHS

ELIZABETH DIXON  
WHO DIED APRIL 16 1851  
AGED 12 YEARS

### Gravestone 72

*Former location:* South of church      *New location:* No. 13  
*Type:* Granite headstone, pointed top, ornate floral decoration  
*Family commemorated:* AIERS      *Number commemorated* 3  
*Condition:* Lichen covered  
*Inscription:* Clear but worn; has lead-filled letters

IN  
Loving Memory  
Of  
EDWARD AIERS  
DIED NOVEMBER 19TH 1880  
AGED 58 YEARS  
Also  
MARY WIFE OF THE ABOVE  
DIED APRIL 1ST 1902  
AGED 78 YEARS  
Also  
ALBERT EDWARD AIERS  
SON OF THE ABOVE  
DIED JUNE 19TH 1900  
AGED 37 YEARS  
"PEACE, PERFECT PEACE, WITH LOVED ONES FAR AWAY,  
IN JESUS' KEEPING WE ARE [SAFE] AND THE[Y]"

### Gravestone 73

*Former location:* South of church      *New location:* No. G  
*Type:* Slate headstone, triangular top  
*Family commemorated:* PAYNE      *Number commemorated* 3  
*Condition:* Overgrown; sound  
*Inscription:* Clear but worn

Sacred  
TO THE MEMORY OF  
LEONARD PAYNE  
WHO DEPARTED THIS LIFE  
on the 26th of April 1843  
Aged 30 years

SEAGER

### Gravestone 74

*Former location:* South of church      *New location:* No. 22  
*Type:* Sandstone headstone, rounded top  
*Family commemorated:* JEFFS      *Number commemorated* 1  
*Condition:* Bottom half spalling  
*Inscription:* Clear but worn

In Affectionate

Remembrance of  
SARAH JEFFS  
WHO DIED JUNE 18<sup>TH</sup> 1851  
AGED 20 YEARS  
IT IS BETTER TO TRUST IN THE LORD  
THAN TO PUT ANY CONFIDENCE IN MAN

**Gravestone 75**

*Former location:* South of church    *New location:* unknown  
*Type:* Slate headstone, flat top, concave shoulders  
*Family commemorated:* STATHEM    *Number commemorated* 1 visible  
*Condition:* Incomplete – top part only  
*Inscription:* Clear but worn

IN MEMORY OF  
WILLIAM STATHEM  
WHO DIED OCTOBER THE 10TH  
1858  
AGED 70 YEARS

**Gravestone 76**

*Former location:* South of church    *New location:* F  
*Type:* Small granite headstone, rounded top  
*Family commemorated:* Unknown    *Number commemorated* Unknown  
*Condition:* Overgrown  
*Inscription:* Traces - worn

[.....]

[.....] M. P. 180[.....]  
M.A.P. 1859

### Gravestone 77

*Former location:* North-west corner of churchyard *New location:* No. 23  
*Type:* Granite headstone, rounded top  
*Family commemorated:* PEARMAN *Number commemorated* 3  
*Condition:* Overgrown  
*Inscription:* Traces; very worn

IN  
MEMORY OF  
EMMA  
THE ONLY AND MUCH  
BELOVED DAUGHTER OF  
JAMES PEARMAN  
WHO DIED SEPT 28TH 1869  
IN THE [...] YEAR OF HER AGE  
HER GENTLE SPIRIT GONE ABOVE  
HER MOTHER'S JOY AND MOTHER'S LOVE  
SHE WAS NOT SENT ON EARTH TO STAY  
FOR ANGELS BECKONED HER AWAY  
ALSO OF MARY WIFE OF  
JAMES PEARMAN  
WHO DIED OCT. 15TH 1875  
AGED 49 YEARS  
ALSO JAMES PEARMAN  
WHO DIED MAY 30TH 1908  
AGED 82 YEARS

### Gravestone 78

*Former location:* NW corner *New location:* No. 49  
*Type:* Red sandstone, pointed headstone  
*Family commemorated:* ALLEN *Number commemorated* 2  
*Condition:*  
*Inscription:* Traces; very worn

In Affectionate Remembrance of  
FRANCES ALLEN  
WHO DIED FEB [...] 1850  
AGED 73 YEARS  
SARAH ALLEN  
SISTER OF THE ABOVE  
[.....]

**Gravestone 79**

*Former location:* NW corner      *New location:* No. 26  
*Type:* Slate headstone with triangular top  
*Family commemorated:* GOODE      *Number commemorated* At least 3  
*Condition:* Good  
*Inscription:* Mint

IN  
Affectionate Remembrance  
OF  
JOHN GOODE  
WHO DIED NOVEMBER 6TH 1863  
AGED 58 YEARS  
ALSO  
ADA JANE BATCHELOR  
GRANDDAUGHTER OF THE ABOVE  
DIED MARCH 12TH 1875  
AGED 44 DAYS  
ALSO  
MARTHA WIFE OF  
[.....]

**Gravestone 80**

*Location:* Far NE corner, still *in situ*  
*Type:* Slate; rectangular ledger  
*Family commemorated:* BRADSHAW      *Number commemorated* 2  
*Condition:* Good  
*Inscription:* Mint

IN MEMORY  
OF  
ANN BRADSHAW  
WIFE OF  
RICHARD BRADSHAW  
WHO DIED JUNE 2ND  
1845  
AGED 51 YEARS

In Affection[ate.....]  
RICHAR[D BRADSHAW]  
WHO DIE[D.....]  
AGED [.....]  
BLESSED ARE [.....]  
IN [.....]

*Gravestone 81*

*Location:* Found during topsoil stripping to east of church  
*Type:* Slate with bedstead top  
*Family commemorated;* unknown *Number commemorated:* 2  
*Condition:* Broken  
*Inscription* Clear

J. G. 1843

M. G. 1848

*Gravestone 82*

*Location:* Found during topsoil stripping to east of church  
*Type:* Slate with rounded top  
*Family commemorated;* unknown *Number commemorated:* 1  
*Condition:* Good  
*Inscription* Clear

F. A. 1850

*Gravestone 83*

*Location:* In fill of vault  
*Type:* Slate with triangular top  
*Family commemorated;* unknown *Number commemorated:* 1  
*Condition:* Good  
*Inscription* Clear

T + W

1846

*Gravestone 84*

*Location:* Found in fill of vault  
*Type:* Slate with rounded top  
*Family commemorated;* unknown *Number commemorated:* 1  
*Condition:* Broken  
*Inscription* Clear

J. P. 1844

*Gravestone 85*

*Location:* Found in fill of vault  
*Type:* Slate with ornate triangular top  
*Family commemorated;* unknown *Number commemorated:* 2  
*Condition:* Broken  
*Inscription* Clear but incomplete

AFFECTIONAT[E].....  
THOMA[S].....

WHO DEPAR[TED THIS LIFE]  
MARCH [.....]  
AGED [.....]

*Gravestone 86*

*Location:* Found in fill of vault  
*Type:* Slate with triangular top  
*Family commemorated;* unknown      *Number commemorated:* 2  
*Condition:* Good  
*Inscription* Clear

J. G.

H. G.

H. Y. G.