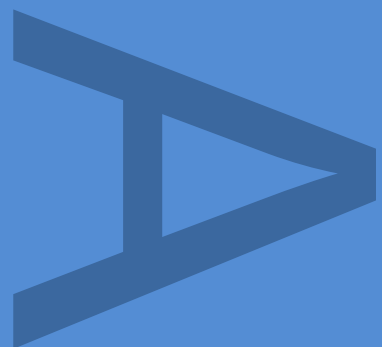


**Lurcher Farm,  
Mansfield Road,  
Farnsfield,  
Nottinghamshire**

**An Archaeological Watching  
Brief**

**November 2015**

**PRE-CONSTRUCT ARCHAEOLOGY  
R12243**



---

**Lurcher Farm, Mansfield Road, Farnsfield, Nottinghamshire:**  
**An Archaeological Watching Brief**

---

**Local Planning Authority:** Newark and Sherwood District Council

**Planning Application:** 13/01061/FUL

**Central National Grid Reference:** SK 62527 56479

**Written/Researched by:** Tony Molloy

**Project Manager:** Kevin Trott

**Commissioning Client:** Armour Heritage Ltd

**Contractor:** Pre-Construct Archaeology (Midlands) Limited

17-19 Kettering Road

Little Bowden

Market Harborough

Leicestershire

LE16 8AN

**Tel:** 01858 468333 / 07730 762587

**E-mail:** ktrott@pre-construct.com

**Web:** www.pre-construct.com

---

**© Pre-Construct Archaeology Limited**

**November 2015**

© The material contained herein is and remains the sole property of Pre-Construct Archaeology Limited and is not for publication to third parties without prior consent. Whilst every effort has been made to provide detailed and accurate information, Pre-Construct Archaeology Limited cannot be held responsible for errors or inaccuracies herein contained.

**PCA Report Number: R12243**

## CONTENTS

<b>Abstract.....</b>	<b>1</b>
<b>1. Introduction.....</b>	<b>2</b>
1.1 Planning Background.....	2
1.2 Site Location and Description .....	2
1.3 Topography and Geology .....	2
1.4 Historical and Archaeological Background .....	2
<b>2. Aims &amp; Objectives .....</b>	<b>3</b>
<b>3. Methodology .....</b>	<b>5</b>
3.1 Fieldwork Methodology .....	5
3.2 Post Fieldwork Methodology .....	5
<b>4. The Contexts .....</b>	<b>5</b>
<b>5. The Results .....</b>	<b>6</b>
5.1 Natural Deposits .....	6
5.2 Modern Deposits.....	6
5.3 Finds.....	6
<b>6. Conclusions .....</b>	<b>6</b>
<b>7. Bibliography.....</b>	<b>7</b>
<b>8. Acknowledgements And Credits .....</b>	<b>8</b>
9.1 Acknowledgements.....	8
9.2 PCA Credits.....	8
 <b>Appendix 1. Plates .....</b>	 <b>9</b>
<b>Appendix 2. Oasis Data Collection Form .....</b>	<b>10</b>
 <b>Figure 1. Site location.....</b>	 <b>12</b>
<b>Figure 2.Trench location plan .....</b>	<b>13</b>

## **Abstract**

*Pre-Construct Archaeology Ltd. (Midlands) were commissioned by Armour Heritage Ltd. to undertake an archaeological watching brief on the groundworks for the installation of a single 60kW wind turbine on land at Lurcher Farm, Mansfield Road, Farnsfield, Newark, Nottinghamshire. The watching brief was carried out on 6<sup>th</sup> – 8<sup>th</sup> September 2015.*

*The watching brief recorded a uniform topsoil overlying natural deposits within all the trenches monitored. No archaeological deposits, features or material evidence was encountered on the site.*

## **1. INTRODUCTION**

### **1.1 Planning Background**

- 1.1.1 Newark and Sherwood District Council (NSDC) issued planning consent (**13/01061/FUL**) for the installation of a single wind turbine, associated infrastructure and access at Lurcher Farm, Mansfield Road, Farnsfield, Newark, Nottinghamshire, hereafter 'the Site'.
- 1.1.2 Following consultation with the Archaeological Adviser to NSDC an archaeological watching brief condition was placed upon the development. Armour Heritage Ltd (AH, 'the Consultant') prepared and submitted a Written Scheme of Investigation (WSI) detailing the methodologies and standards by which the archaeological contractor would undertake the watching brief. The WSI was approved by NSDC prior to the commencement of groundworks.
- 1.1.3 AH commissioned Pre-Construct Archaeology Ltd (hereafter PCA) to undertake the watching brief.

### **1.2 Site Location and Description**

- 1.2.1 The Site is located broadly 18km west of Newark and 8.5km south east of Mansfield, 2km west of Farnsfield and 750m to the east of Lurcher Farm centred on NGR SK 62527 56479 (**Figures 1 & 2**).

### **1.3 Topography and Geology**

- 1.3.1 The Site is located in a rural setting within agricultural fields and properties of neighbouring farms (**Figure 2**) at a height of approximately 86m aOD.
- 1.3.2 The underlying geology of the Site is described by the British Geological Survey (BGS) as Nottingham Castle Sandstone Formation: Sandstone, Pebbly (gravelly), a sedimentary bedrock formed approximately 246 to 251 million years BP. No superficial geological deposits are recorded on the Site.

### **1.4 Historical and Archaeological Background**

#### **1.4.1 General**

- 1.4.1.1 The Cultural Heritage chapter of the Environmental Statement (HPS 2013) submitted as part of the planning application did not record any heritage assets within a 500m radius of the Site. Nevertheless, a number of designated heritage assets are recorded approximately 1.4km from the Site, and the Archaeological Adviser to NSDC has highlighted the archaeological potential in her letter to the local authority.

## **1.4.2 Prehistoric**

- 1.4.2.1 A univallate hillfort west of Combs Farm (a Scheduled Monument) to the south of the Site survives as a curving earthwork bank with an outer ditch enclosing an area of around 1.4ha. Partial excavation has recorded pottery of Iron Age and Romano-British date, along with a Bronze Age socketed axe and flint tools indicating earlier activity at the site. Aerial photographic transcriptions have confirmed an earlier curvilinear enclosure survives beneath the hillfort itself.
- 1.4.2.2 To the southwest of the Site, a ditched bowl barrow is recorded and measures 26m in diameter. Although is partially damaged in the southeast quadrant the barrow ditch is partly infilled but survives as a low earthwork some 0.3m deep.

## **1.4.3 Roman**

- 1.4.3.1 The site of a Roman camp (a Scheduled Monument) is located south of Carr Banks Farm, some 1.4km south-east of the Site. Although no upstanding features relating to Farnsfield Roman camp survive, aerial photography has confirmed the military camp is sub-rectangular in plan and defined by a ditch enclosing an area of some 3.9ha. A gated entrance was confirmed during excavations on the north-east side of the monument in the early 1980s, which also recorded an internal bank, set back from the ditch by 0.3m. The monument is situated on the summit of a broad ridge affording open views of the surrounding landscape to the north, east and west.

## **1.4.4 Undated**

- 1.4.4.1 The National Mapping Programme has recorded cropmarks in the vicinity of the Site, and are indicative of enclosures and field systems possibly associated with the Iron Age and later activity at Combs Farm.

## 2. AIMS & OBJECTIVES

2.1 In considering any planning application for development, the local planning authority are guided by the policy framework set by government guidance, in this instance the National Planning Policy Framework (NPPF), by Local policy and by other material considerations.

The principal aims of the watching brief were:

- To record the nature, extent, date, character, quality, significance and state of preservation of any archaeological remains affected by the investigation.
- To assess where appropriate any ecofactual and palaeo-environmental potential of archaeological deposits and features from within the Site.
- To set the Site and its potential archaeological remains into the context of the wider landscape.

### 2.2 Research Objectives

*The Archaeology of the East Midlands, An Archaeological Resource Assessment and Research Agenda*, Leicester Archaeology Monograph 13, ed. N Cooper (2006), along with the *East Midlands Heritage: An Updated Research Agenda and Strategy for the Historic Environment of the East Midlands*, ed. D. Knight, B. Vyner & C. Allen (2012) will be referenced for specific research criteria.

### 3. METHODOLOGY

#### 3.1 Fieldwork Methodology

- 3.1.1 Groundworks comprised the excavation of a square trench measuring 9m x 9m and an adjoining north-south aligned 80m long x 0.5m wide cable trench (**Figure 2; Plates 1 - 3**).
- 3.1.2 All excavation was undertaken by machine excavator, monitored under archaeological supervision.
- 3.1.3 Archaeologically significant deposits were cleaned with hand tools. Deposits and layers were recorded using the PCA *pro forma* 'Context Recording Sheet'. Plans were drawn at an appropriate scale. A full photographic record was made, including digital, black and white prints and 35mm colour transparencies. The locations of all the ground disturbances were surveyed using GPS and TST survey equipment. Site records were compiled using the unique site code LFNT15.

#### 3.2 Post Fieldwork Methodology

- 3.2.1 English Heritage's Management of Research Projects in the Historic Environment (EH 2006) was used as the framework for post-excavation work.
- 3.2.2 Following submission of a report of the project to, and approval by, the Local Planning Authority, the completed archive comprising written, drawn and photographic records will be deposited with the Nottinghamshire Museums Service (NMS).

### 4. THE CONTEXTS

- 4.1 A unique context number was assigned to each distinguishable depositional event. In the text below context numbers are given in **bold**.
- 4.2 Two context numbers were allocated to two layers. They are described in the Results.
- 4.3 Cultural periods encountered on site were as follows:
- Modern 1900-present



## **5. THE RESULTS**

### **5.1 Natural Deposits (Plates 1 - 3)**

- 5.1.1 Natural deposits recorded on the site comprised a pinkish-brown sand containing occasional rounded pebbles, context **1**. This represents the Nottingham Castle Sandstone Formation of the bedrock geology and was recorded up to a depth of 1.7m in the trenches.

### **5.2 Modern Deposits (Plates 1 - 3).**

- 5.2.1 A topsoil layer consisting of a friable, dark brown sandy silt with occasional quartz pebble inclusions, **2**, overlay natural deposits across the Site. This layer represents an agricultural ploughsoil.

### **5.3 Finds**

- 5.3.1 No finds were recovered during the watching brief.

## **6. CONCLUSIONS**

- 6.1 The watching brief recorded a sequence of stratigraphy comprising topsoil overlying natural sand deposits across the site. No archaeological deposits, features or material evidence was recorded within the trenches.
- 6.2 The paucity of archaeological evidence from the trenches suggests very low human activity on the Site and its environs and may also be indicative of the long-term exploitation of this land for agriculture. However, given the small size of the areas excavated the results may not represent an accurate distribution of the extent of human activity within the close vicinity of the Site.

## 7. BIBLIOGRAPHY

BGS (British Geological Survey) 2015. *Geology of Britain viewer*, available online at <http://mapapps.bgs.ac.uk/geologyofbritain/home.html>.

ClfA, 2014, Standards and guidance for archaeological excavations, Chartered Institute for Archaeologists, Reading

Chartered Institute for Archaeologists 2014. *Standard and guidance for an archaeological watching brief*

Cooper, N. (ed.), 2006, The Archaeology of the East Midlands: an Archaeological Resource Assessment and Research Agenda for the East Midlands. Leicester Archaeology Monograph No. **13**. University of Leicester

English Heritage, 2011, Environmental Archaeology: a guide to the theory and practice of methods, from sampling and recovery to post-excavation, English Heritage

English Heritage 2006. *Management of Research Projects for the Historic Environment*.

Halton Planning Services 2013, Lurcher Farm Wind Turbine, Environmental Statement Volume

Health and Safety Executive, 2009, A guide to health and safety regulation in Great Britain, The Office of Public Sector Information

Knight, D, Vyner, B & Allen, C. 2012. East Midlands Heritage. An Updated Research Agenda and Strategy for the Historic Environment of the East Midlands. University of Nottingham & York Archaeological Trust

Morgan, G. 2005. A Guide to the Identification, Analysis and Conservation of Archaeological Artefactual Material. Institute of Conservation & University of Leicester

Taylor, J. & Brown, G. 2009. PCA Fieldwork Induction Manual Operations Manual **1**

Watkins, D & Neal, V. 2001. First Aid for Finds

### Online Sources

British Geological Survey website: <http://www.bgs.ac.uk>

Free Map Tools <http://www.freemaptools.com>

## **8. ACKNOWLEDGEMENTS AND CREDITS**

### **8.1 Acknowledgements**

- 8.1.1 Pre-Construct Archaeology Ltd would like to thank the following: Armour Heritage Ltd for commissioning the work.

The Archaeological Adviser to NSDC for their collaborative role.

### **8.2 PCA Credits**

Project Manager: Kevin Trott

Fieldwork: Kevin Trott and Steve Jones

Report: Tony Molloy

CAD: Jennifer Simonson

## APPENDIX 1. PLATES



**Plate 1:** General shot of trench for wind turbine following removal of topsoil, looking north. No scales.



**Plate 2:** Turbine trench fully excavated showing topsoil and natural sand, looking north. Scales 1 x 1m, 1x 2m.



**Plate 3:** Cable trench looking south. Scales 1 x 2m.

## APPENDIX 2. OASIS DATA COLLECTION FORM

**OASIS ID: preconst1-225049**

### Project details

Project name	Lurcher Farm, Mansfield Road, Farnsfield
Short description of the project	Pre-Construct Archaeology Ltd. (Midlands) were commissioned by Armour Heritage Ltd. to undertake an archaeological watching brief on the groundworks for the installation of a single 60kW wind turbine on land at Lurcher Farm, Mansfield Road, Farnsfield, Newark, Nottinghamshire. The watching brief was carried out on 6th - 8th September 2015. The watching brief recorded a uniform topsoil overlying natural deposits within all the trenches. No archaeological deposits, features or material evidence was encountered on the Site.
Project dates	Start: 06-09-2015 End: 08-09-2015
Previous/future work	Not known / Not known
Any associated project reference codes	LFNT15 - Site code
Any associated project reference codes	13/01061/FUL - Planning Application No.
Type of project	Recording project
Site status	Local Authority Designated Archaeological Area
Current Land use	Cultivated Land 1 - Minimal cultivation
Monument type	NONE None
Monument type	NONE None
Significant Finds	NONE None
Significant Finds	NONE None
Investigation type	"Watching Brief"
Prompt	Direction from Local Planning Authority - PPG16

### Project location

Country	England
Site location	NOTTINGHAMSHIRE NEWARK AND SHERWOOD FARNFIELD Lurcher Farm, Mansfield Road
Postcode	NG22 8HY
Study area	100 Square metres
Site coordinates	SK 62527 56479 53.101543490296 -1.066001930858 53 06 05 N 001 03 57 W Point
Height OD / Depth	Min: 85.5m Max: 85.5m

### Project creators

Name of Organisation	PCA Midlands
Project brief	Newark and Sherwood District Council

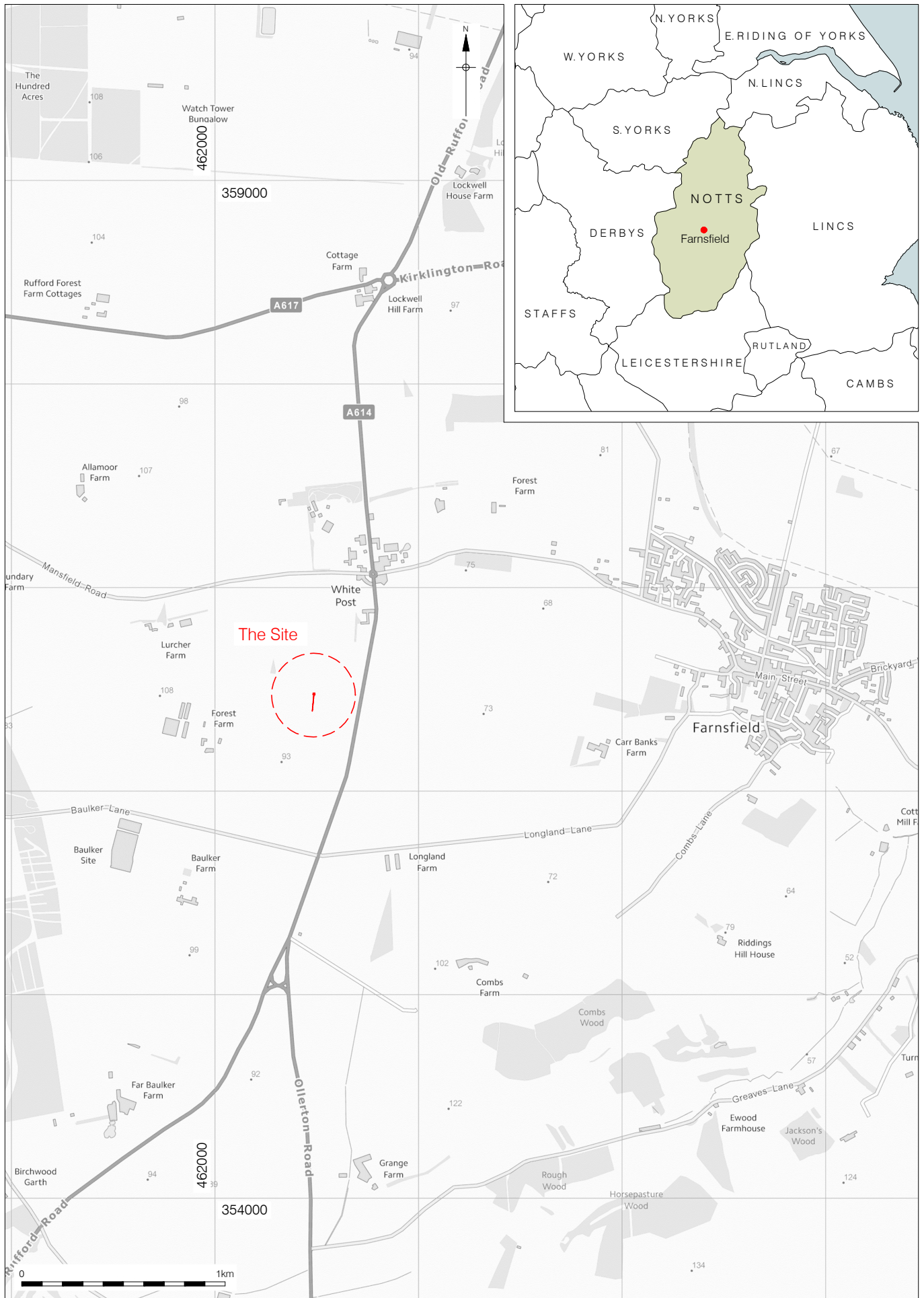
originator	
Project design originator	Armour Heritage Ltd
Project director/manager	Kevin Trott
Project supervisor	Steve Jones
Type of sponsor/funding body	Consultancy
Name of sponsor/funding body	Armour Heritage

### Project archives

Physical Archive Exists?	No
Physical Archive recipient	Nottingham museums service
Digital Archive recipient	Nottinghamshire
Digital Media available	"Images raster / digital photography", "Images vector", "Text"
Paper Archive recipient	Nottingham museums service
Paper Media available	"Context sheet", "Diary", "Map", "Plan", "Report"

Entered by	Tony Molloy (tmolloy@pre-construct.com)
------------	---



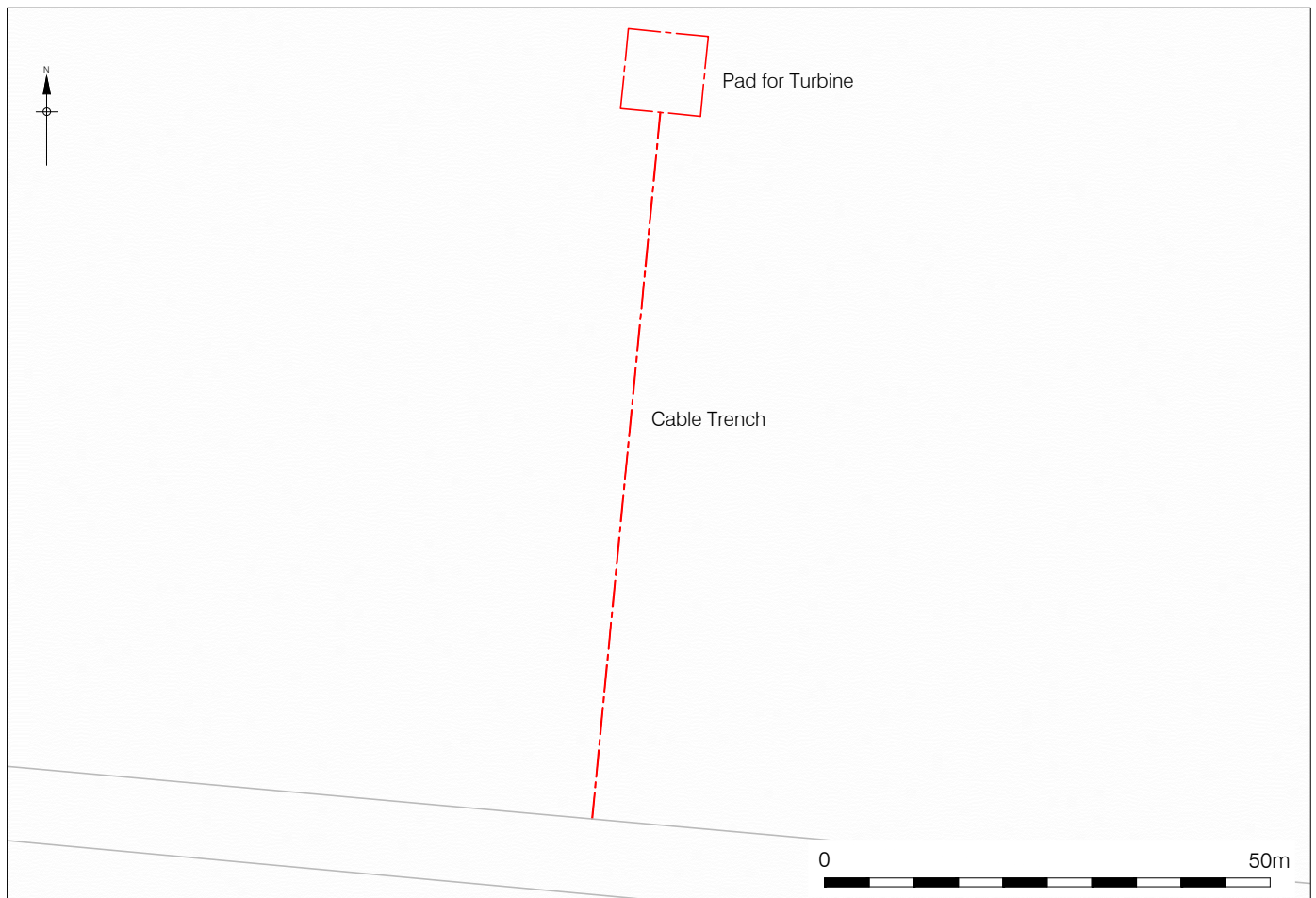
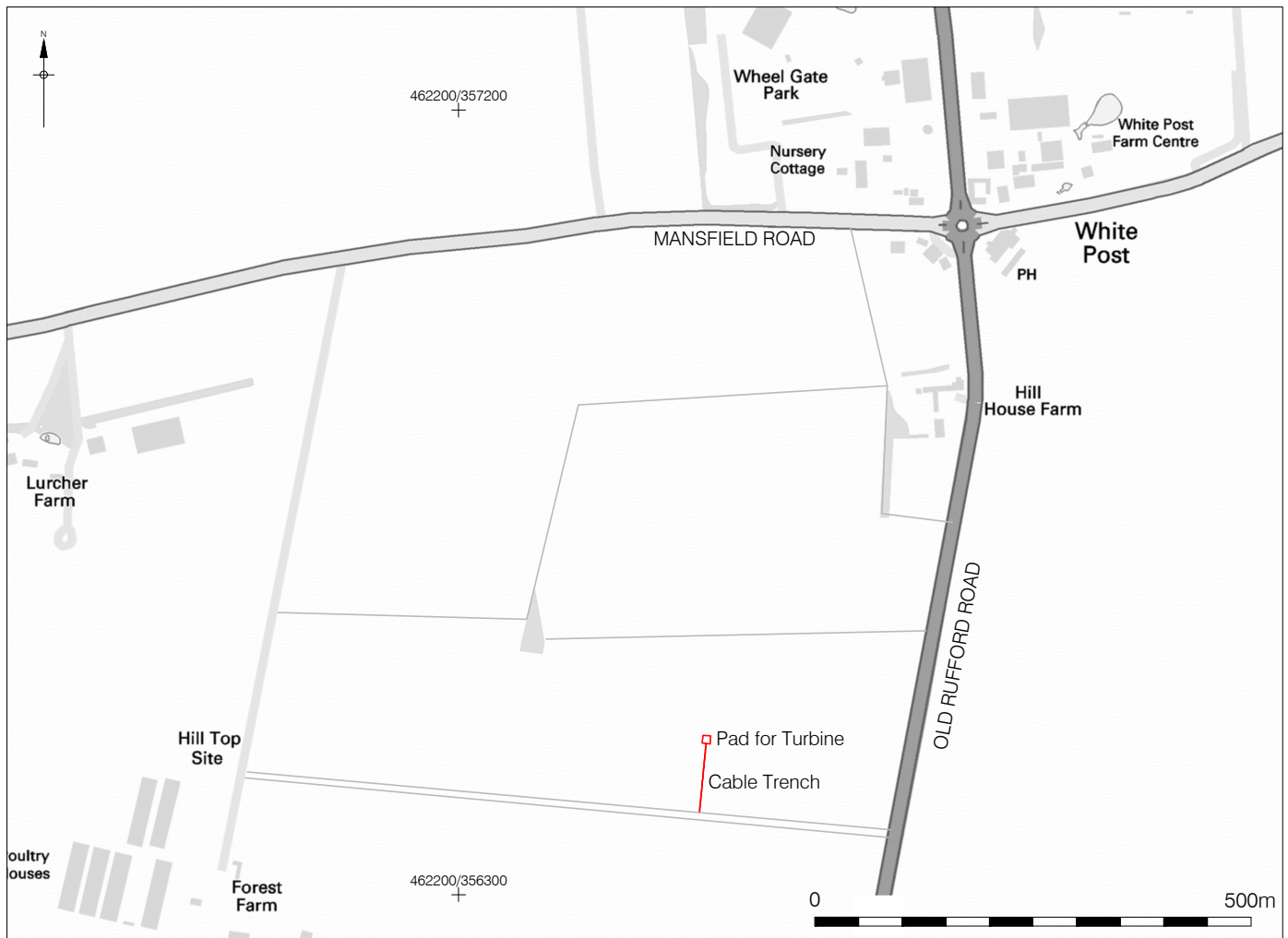


Contains Ordnance Survey data © Crown copyright and database right 2014

© Pre-Construct Archaeology Ltd 2015

25/09/15 JS

Figure 1  
Site Location  
1:2,000,000 & 1:25,000 at A4





# PCA

---

## **PCA SOUTH**

UNIT 54  
BROCKLEY CROSS BUSINESS CENTRE  
96 ENDWELL ROAD  
BROCKLEY  
LONDON SE4 2PD  
TEL: 020 7732 3925 / 020 7639 9091  
FAX: 020 7639 9588  
EMAIL: [info@pre-construct.com](mailto:info@pre-construct.com)

---

## **PCA NORTH**

UNIT 19A  
TURSDALE BUSINESS PARK  
DURHAM DH6 5PG  
TEL: 0191 377 1111  
FAX: 0191 377 0101  
EMAIL: [info.north@pre-construct.com](mailto:info.north@pre-construct.com)

---

## **PCA CENTRAL**

THE GRANARY, RECTORY FARM  
BREWERY ROAD, PAMPISFORD  
CAMBRIDGESHIRE CB22 3EN  
TEL: 01223 845 522  
FAX: 01223 845 522  
EMAIL: [info.central@pre-construct.com](mailto:info.central@pre-construct.com)

---

## **PCA WEST**

BLOCK 4  
CHILCOMB HOUSE  
CHILCOMB LANE  
WINCHESTER  
HAMPSHIRE SO23 8RB  
TEL: 01962 849 549  
EMAIL: [info.west@pre-construct.com](mailto:info.west@pre-construct.com)

---

## **PCA MIDLANDS**

17-19 KETTERING RD  
LITTLE BOWDEN  
MARKET HARBOROUGH  
LEICESTERSHIRE LE16 8AN  
TEL: 01858 468 333  
EMAIL: [info.midlands@pre-construct.com](mailto:info.midlands@pre-construct.com)

---

