

A Summary Report on an Archaeological Watching Brief at St George Wharf, Vauxhall, London SW8, London Borough of Lambeth

Site Code: SGZ 07

Written by Alexis Haslam

Pre-Construct Archaeology Limited

11th December 2007

An archaeological watching brief was commissioned by Duncan Hawkins of CgMs Ltd on behalf of St George in advance of the demolition of a jetty at St George Wharf, Vauxhall, London SW8, London Borough of Lambeth. The demolition of this jetty had been identified by Diane Walls, the Greater London Archaeological Advisory Service (GLAAS) monitor for Lambeth, as a potential hazard to a Bronze Age timber feature located on the foreshore of the Thames (TQ 3015 7800). This Bronze Age Feature is recorded in *The Port of London Authority and Crown Estates Commissioners Permit To Search The Thames Foreshore* (<http://www.ncmd.co.uk/docs/pla%20permit.pdf>) as a series of timber platform uprights with Bronze Age finds in association at Vauxhall, upriver from Vauxhall Bridge to Riverside Court. Excavation around this feature is limited to a depth of 7.5cm. The archaeological watching brief took place from the 5th to the 10th of December 2007 and was supervised by Alexis Haslam of Pre-Construct Archaeology Ltd. The project was managed by Chris Mayo, also of Pre-Construct Archaeology Ltd.

The development taking place at St George Wharf incorporates a mixed use scheme, including luxury apartments, retail units, offices, restaurants and a proposed health and fitness facility. The removal of the jetty formed part of the programme of works involved in this development and, due to the proximity of the Bronze Age timber feature to the jetty itself (some 40m away), archaeological monitoring was required for protective purposes. The demolition of the jetty was observed by an archaeologist standing on the riverside, and photographs were taken at regular intervals on two 35mm cameras (colour slide and black and white print film) and a digital camera (digital format).

The first day of monitoring on the 5th of December involved the removal of the platform of the jetty. Much of this was broken out by hand and loaded into a number of skips situated within a barge to the east of the jetty itself. A further barge equipped with a mobile crane was located to the immediate north of the jetty, the crane being used for both loading and unloading purposes. Following the removal of the jetty platform, demolition ceased for two days while further equipment for the removal of the piles was brought in and the barge containing the skips was unloaded. The second day of monitoring on the 10th of December witnessed the removal of these piles with the use of the mobile crane fitted with specialist equipment. Once

the piles had been loosened from their settings, they were drawn out vertically and loaded into the barge to the east of the jetty. All of the work involved in the demolition process was taking place within the immediate vicinity of the jetty itself and at a safe distance from the Bronze Age timber feature. During the course of the watching brief, no activities were seen to damage or threaten the integrity of the archaeological remains.

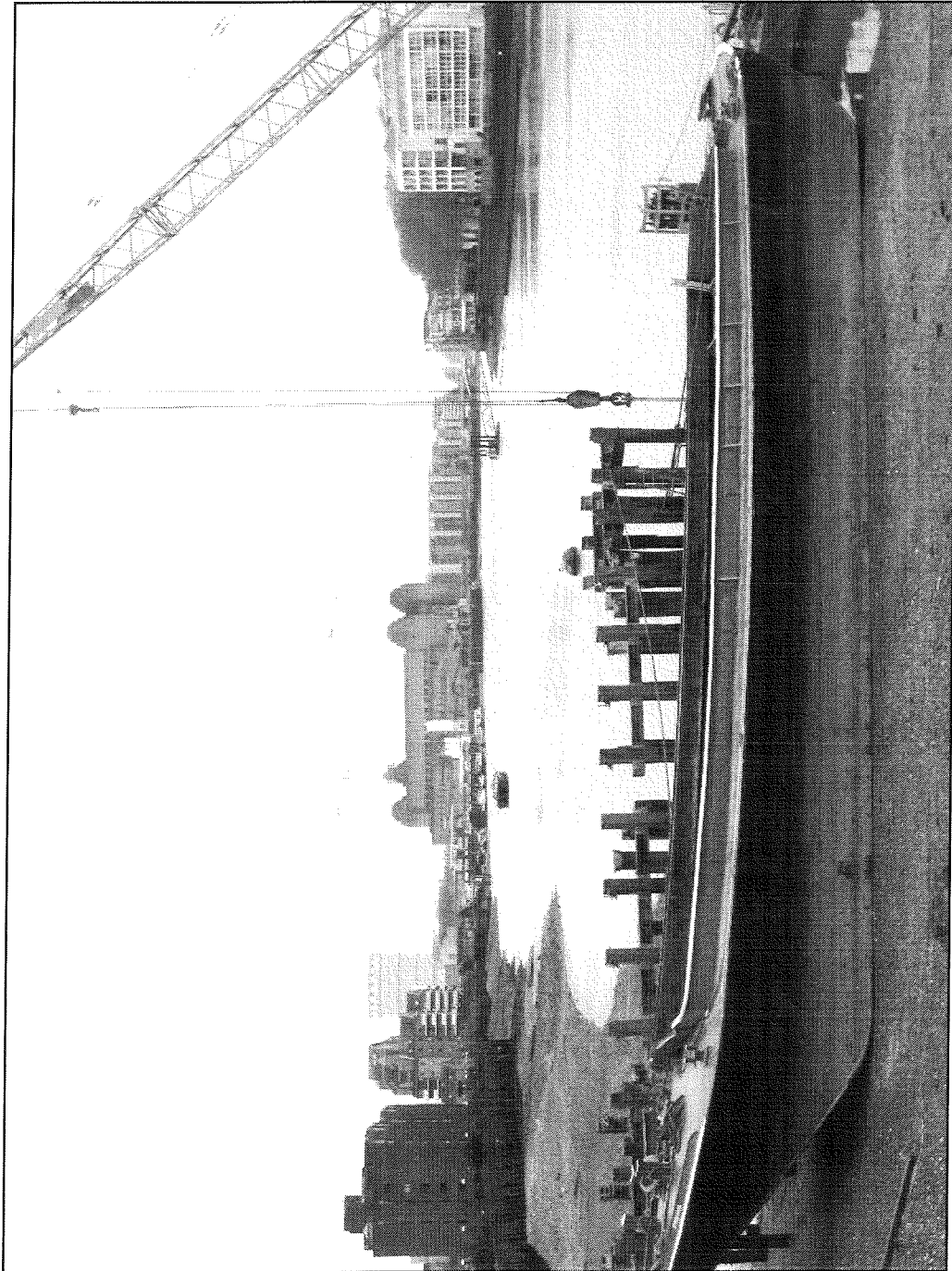


Plate 1: View south-west of jetty demolition. The Bronze Age remains are located approximately in the rear-left of the picture.

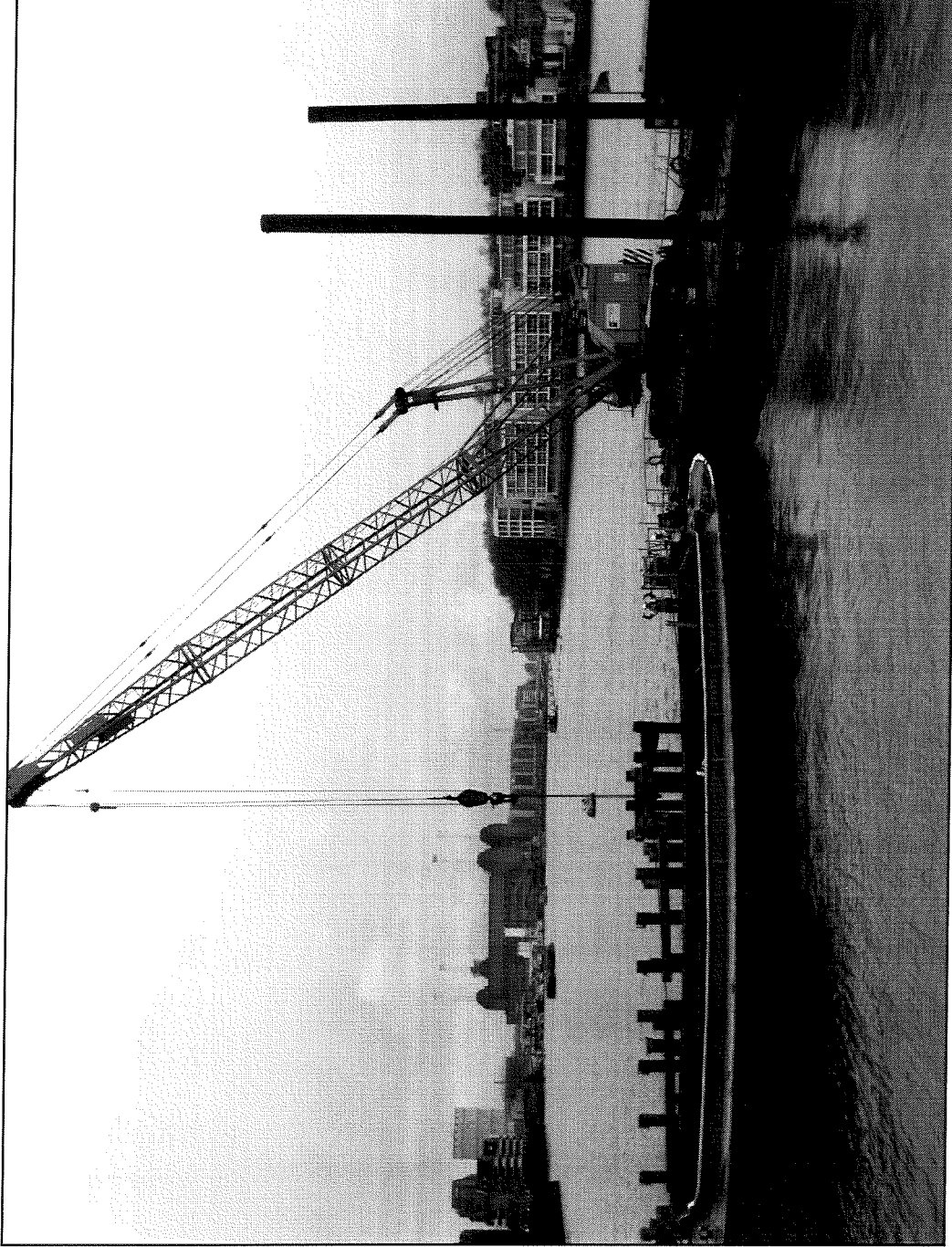


Plate 2: View south-west of jetty demolition.



Plate 3: View north-east of jetty demolition.

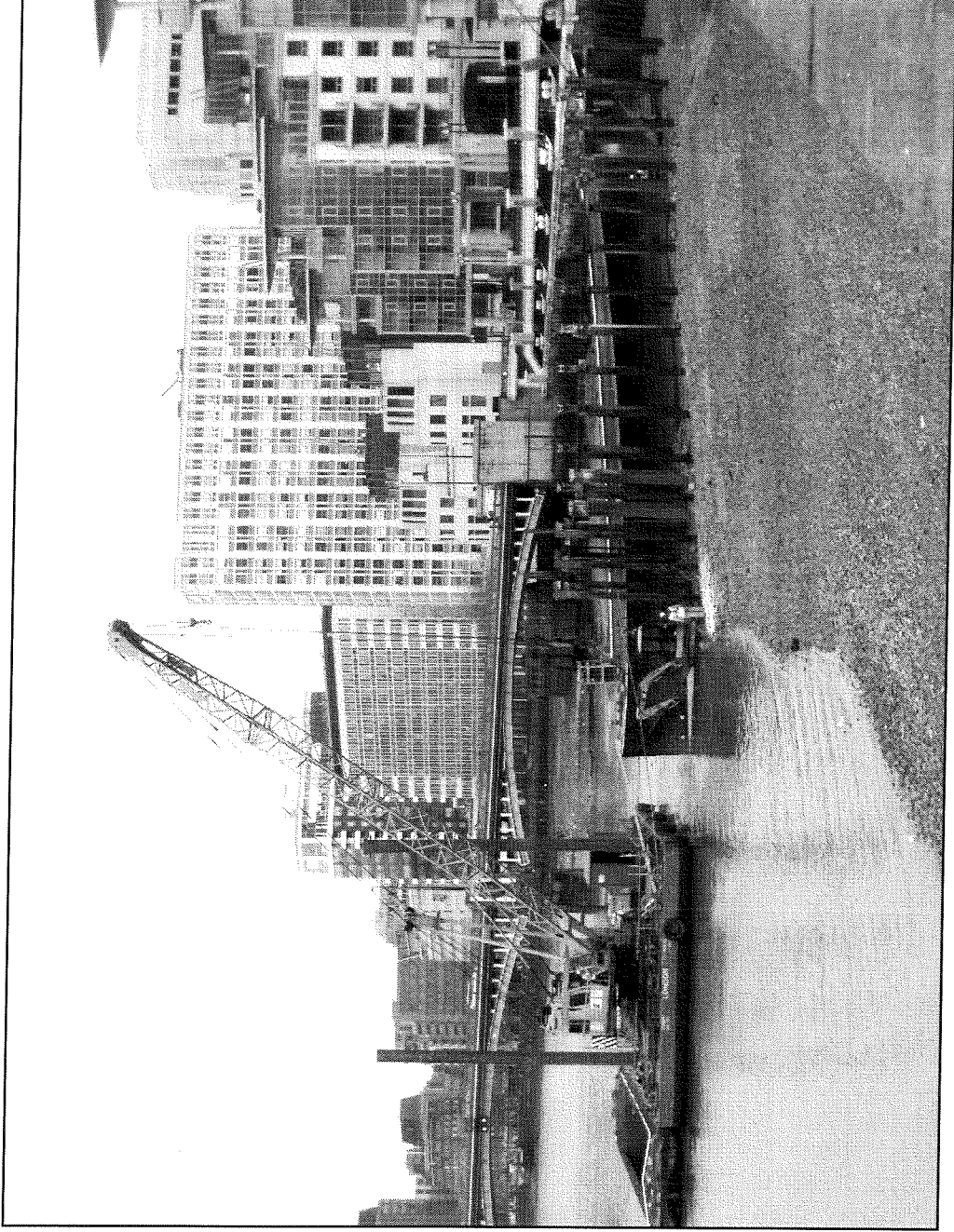


Plate 4: View north-east of jetty demolition.

APPENDIX 1: OASIS FORM

OASIS ID: preconst1-36057

Project details

Project name An Archaeological Watching Brief at St George Wharf, Vauxhall, London SW8, London Borough of Lambeth

Short description of the project An archaeological watching brief concerning the demolition of a jetty at St George Wharf, Vauxhall, London SW8 was conducted by Pre-Construct Archaeology Ltd between the 5th and 10th of December 2008. The watching brief had been called for by Diane Walls (GLAAS monitor for Lambeth) due to the proximity of the jetty to a Bronze Age timber feature located on the foreshore of the Thames (TQ 3015 7800). No damage to this timber feature was observed during the demolition process.

Project dates Start: 05-12-2007 End: 10-12-2007

Previous/future work No / Not known

Any associated project reference codes SGZ 07 - Sitecode

Type of project Recording project

Site status None

Current Land use Other 15 - Other

Investigation type 'Watching Brief'

Project location

Country England

Site location GREATER LONDON LAMBETH LAMBETH St George Wharf

Postcode SW8

Study area 1000.00 Square metres

Site coordinates TQ 3030 7800 51.4854207784 -0.123165337458 51 29 07 N 000 07 23 W Point

Project creators

Name of Organisation Pre-Construct Archaeology Ltd

Project brief originator GLAAS

Project design originator CgMs Consulting

Project director/manager Chris Mayo

Project supervisor Alexis Haslam

Type of sponsor/funding body St George PLC

Project archives

Physical Archive Exists?	No
Physical Archive recipient	LAARC
Digital Archive recipient	LAARC
Digital Contents	'none'
Digital Media available	'Text'
Paper Archive recipient	LAARC
Paper Contents	'none'
Paper Media available	'Photograph','Unpublished Text'

Project bibliography 1

Publication type	Grey literature (unpublished document/manuscript)
Title	A Summary Report on an Archaeological Watching Brief at St George Wharf, Vauxhall, London SW8, London Borough of Lambeth
Author(s)/Editor(s)	Haslam, A.
Date	2007
Issuer or publisher	Pre-Construct Archaeology Ltd
Place of issue or publication	Brockley
Entered by	Alexis Haslam (ahaslam@pre-construct.com)
Entered on	4 January 2008