

Dartmoor National Park Historic Environment Record

Civil Parish & District: Bridford, Dartmoor	National Grid Reference: SX 8175 8819	Number:
Subject: Archaeological monitoring and recording at Heath Cottage, Bridford, Devon.		Photo attached: Y
Planning Application no: 0359/11	Recipient museum: Royal Albert Memorial Museum	
OASIS ID: oakforda1-137304	Museum Accession no: 12/90	
Contractor's reference number/code: OA1034	Dates fieldwork undertaken: 17/04, 19/04 & 9/11/2012	
<p>Description of works:</p> <p>An archaeological watching brief was undertaken by Oakford Archaeology between April and November 2012 during building work at Heath Cottage, Bridford (SX 8175 8819). The site (Fig. 1) lies in the northeast corner of the parish, close to the river Teign. Heath Cottage is a grade II Listed building dating to the 17th century, with a basic two-room cross passage plan and minor later modifications.</p> <p>A watching brief was maintained during works associated with the removal of existing concrete floor surfaces. The initial ground reduction for the new flooring extended to a depth of 0.35-0.4m.</p> <p>Results:</p> <p>The removal of concrete floors exposed elements of an earlier cobbled surface (Fig. 2) in the cross passage and the corridor leading to the parlour. Further areas of cobbled surface survived in the present toilet, while some cobbling survived in the living room and the parlour.</p> <p>The cobbled surface in the cross passage consisted of small to medium size water-worn stones on a bed of sand that overlay the natural subsoil. These were probably part of the original 17th-early 18th century flooring. The cobbles in the passage leading to the parlour are likely to be similar in date. Two square sockets, located immediately to the left of the entrance, indicate the original extent of the 17th century timber partition.</p> <p>The cobbling in the present toilet consisted of slightly larger cobbles, located at a slightly higher level to those in the cross passage. It is probable that these date to the late 18th-early 19th century, when the farmhouse was extensively modernised and the original parlour divided by the insertion of a staircase and a small service room below.</p> <p>Project archive and OASIS entry</p> <p>The site records have been compiled into a fully integrated site archive which is currently held at Oakford Archaeology's offices under project number 1034, pending deposition at the Royal Albert Memorial Museum. A summary of the investigations has been submitted to the on-line archaeological database OASIS (Online AccesS to the Index of archaeological InterventionS).</p>		
Recorder: MFR Steinmetzer (Oakford Archaeology)		Date sent to HER:

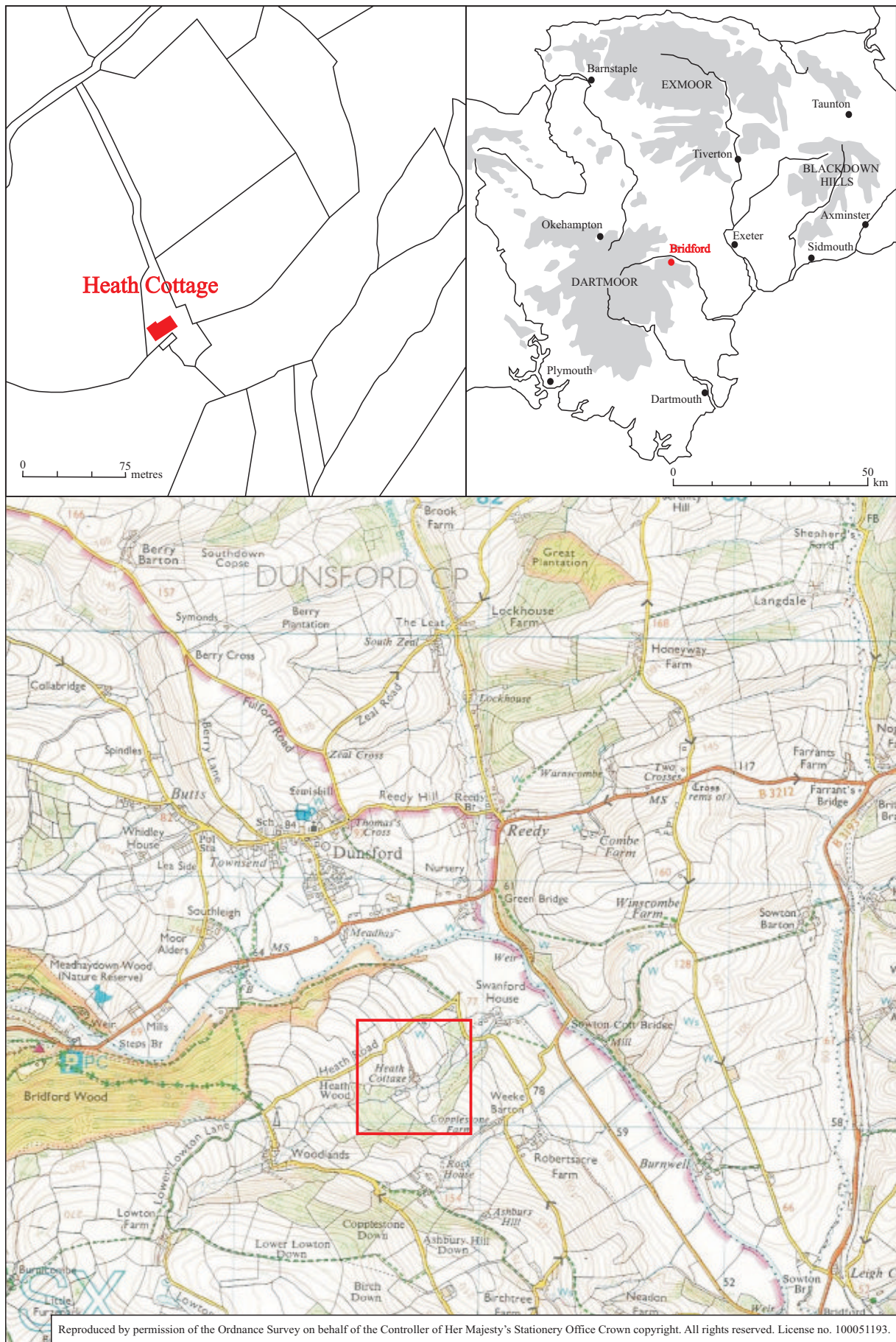


Fig. 1 Location of site.

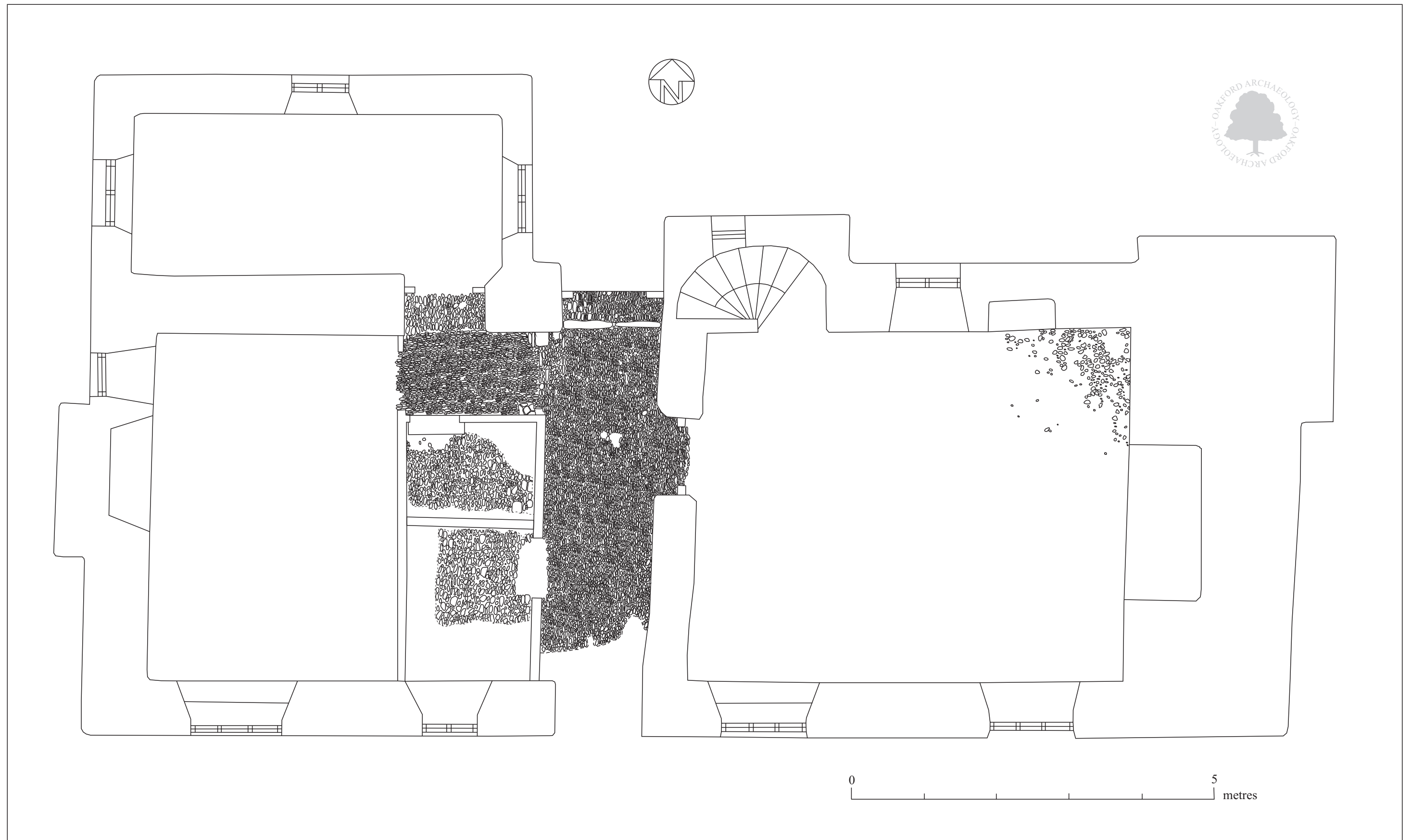


Fig. 2 Plan of Heath House and location of observations.



Pl. 1 General view of cobbled surface in cross passage.
2m scale. Looking north.



Pl. 2 General view of cobbled surface in cross passage.
2m scale. Looking south.



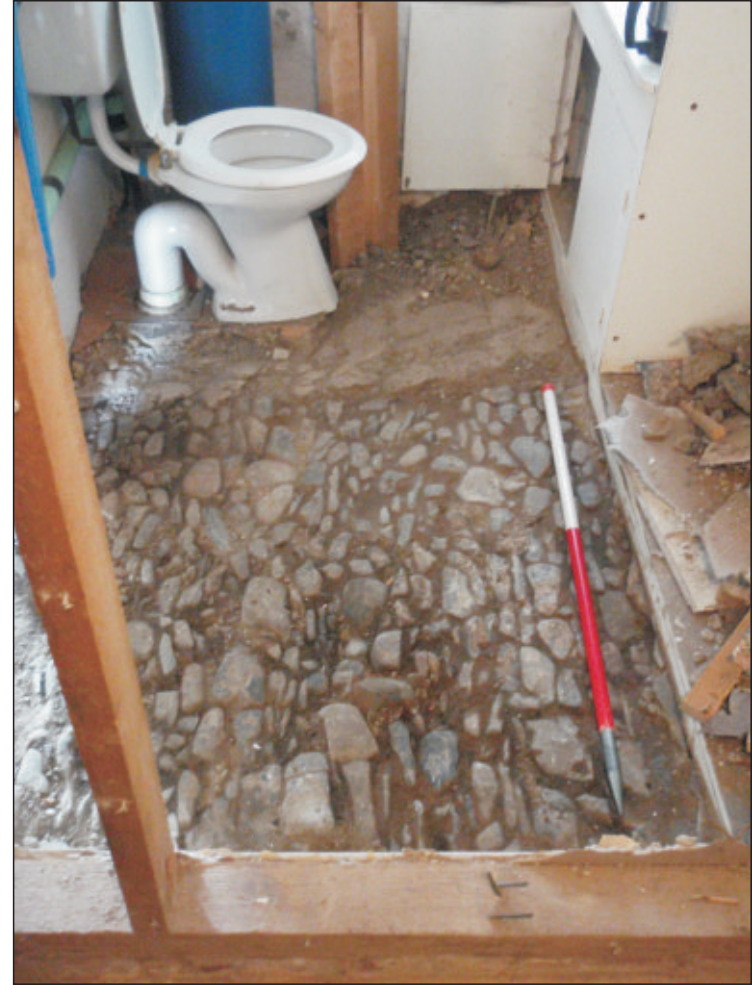
Pl. 3 General view of sockets for cross passage timber partition. 0.25m scale. Looking west.



Pl. 4 Close-up of socket. 0.25m scale. Looking west.



Pl. 5 General view of cobbled surface in passage leading to parlour. 1m scale. Looking east.



Pl. 6 General view of cobbled surface in present toilet. 1m scale. Looking west.



Pl. 7 General view of surviving cobbling in present living room. 1m scale. Looking east.



Pl. 8 General view of surviving cobbling in parlour. 1m scale. Looking southwest.