

## Dartmoor National Park Historic Environment Record

<b>Civil Parish &amp; District:</b> North Bovey, Dartmoor	<b>National Grid Reference:</b> SX 7016 8404	<b>Number:</b>
<b>Subject:</b> Archaeological monitoring and recording at Southmeads, Lettaford, Devon.		<b>Photo attached:</b> Y
<b>Planning Application no:</b> 0359/11	<b>Recipient museum:</b> n/a	
<b>OASIS ID:</b> oakforda1-190709	<b>Museum Accession no:</b> n/a	
<b>Contractor's reference number/code:</b> OA1153	<b>Dates fieldwork undertaken:</b> 25-26/02, 03-06/03, 10/03/2014	
<p><b>Description of works:</b> An archaeological watching brief was undertaken by Oakford Archaeology between February and March 2014 during building work at Southmeads, Lettaford (SX 7016 8404). The site (Fig. 1) lies in the western edge of the hamlet. The house is a grade II listed building and is essentially an early 16<sup>th</sup> century longhouse with later 16<sup>th</sup>-17<sup>th</sup> century modifications, 18<sup>th</sup>-19<sup>th</sup> century outshuts and 20<sup>th</sup> century extensions.</p> <p>A watching brief was maintained during works associated with the removal of existing concrete floor surfaces. The initial ground reduction for the new flooring extended to a depth of 0.35-0.4m.</p> <p><b>Results:</b> The removal of concrete floors exposed elements of an earlier surface (Fig. 2) in the shippon. A further area of earlier flooring survived in the hall fireplace.</p> <p>The surface in the shippon consisted of small to large size worn granite rubble on a bed of sand that overlay the natural subsoil. Although there is no evidence of a central drainage channel the rough nature of the surface would suggest an agricultural use. The floor is probably part of an earlier arrangement, prior to the shippon being converted to domestic use in the 20<sup>th</sup> century.</p> <p>Following the removal of the concrete floor in the hall five large granite slabs were uncovered inside and immediately in front of the fireplace. These formed part of an earlier arrangement; although part of the fireplace floor had been patched up with 20 early 19<sup>th</sup> century bricks.</p> <p>No evidence of earlier flooring survived in the cross-passage, parlour and former bathroom due to modern truncation associated with the insertion of concrete floors. No other features, deposits or dating evidence were uncovered following the removal of the modern concrete floors.</p> <p><b>Project archive and OASIS entry</b> Due to the limited nature of the findings a project archive will not be produced. A summary of the investigations has been submitted to the on-line archaeological database OASIS (Online AccesS to the Index of archaeological InterventionS).</p>		
<b>Recorder:</b> MFR Steinmetzer (Oakford Archaeology)		<b>Date sent to HER:</b>

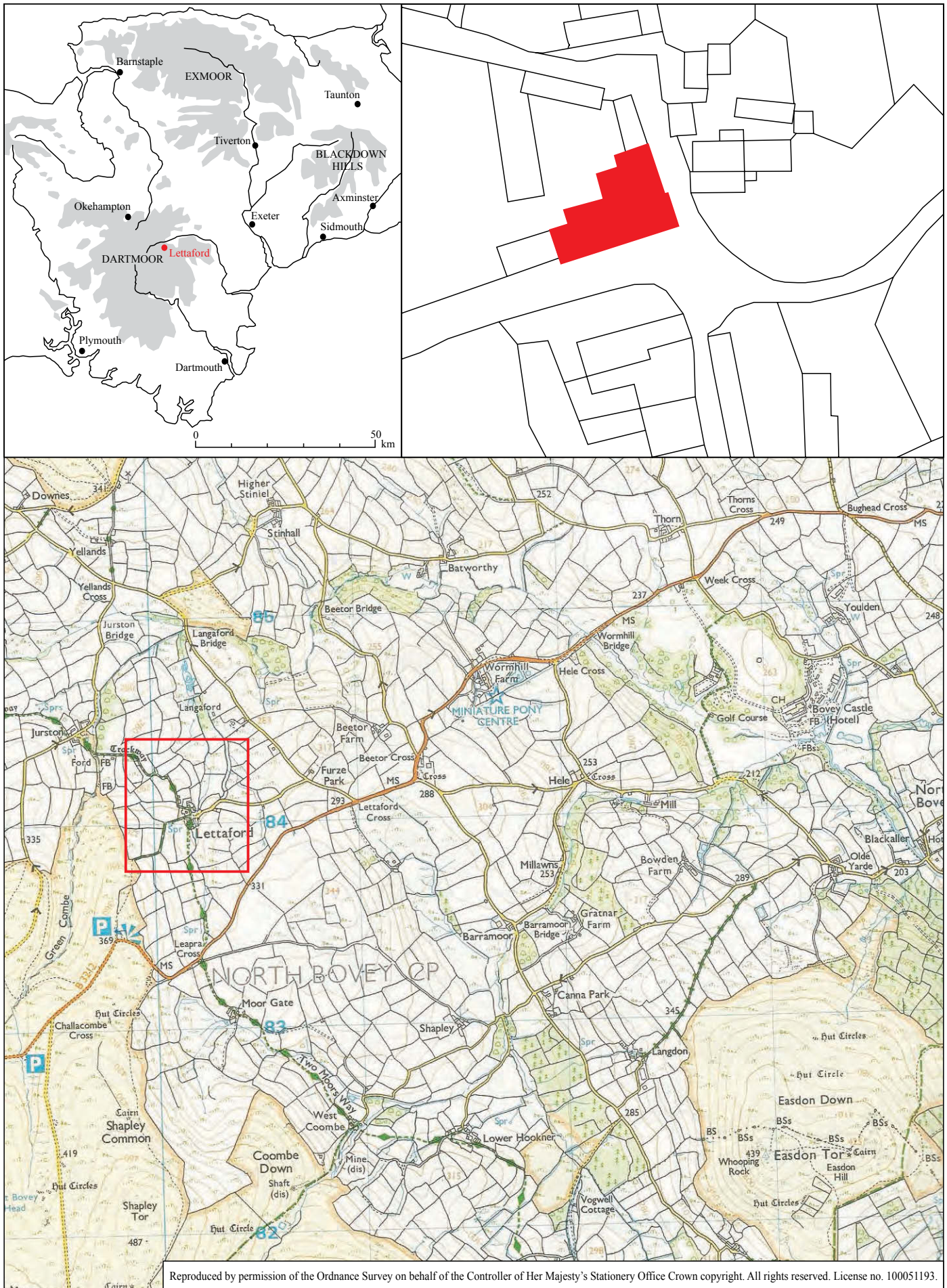


Fig. 1 Location of site.

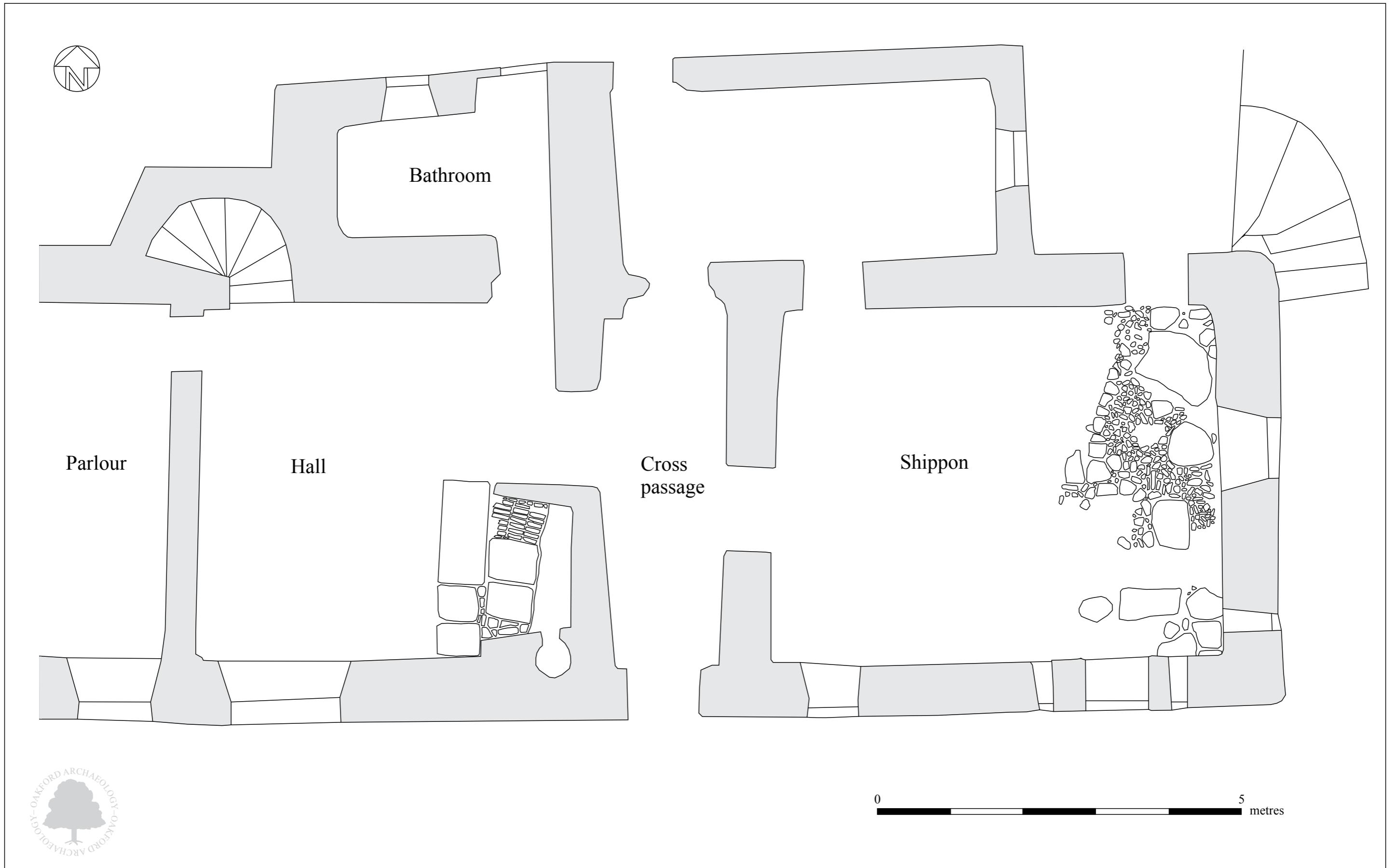


Fig. 2 Plan showing location of observations.



Pl. 1 General view of floor, Shippon. 1m scale.  
Looking south.



Pl. 2 General view of fireplace, Hall. 1m scale. Looking east.