

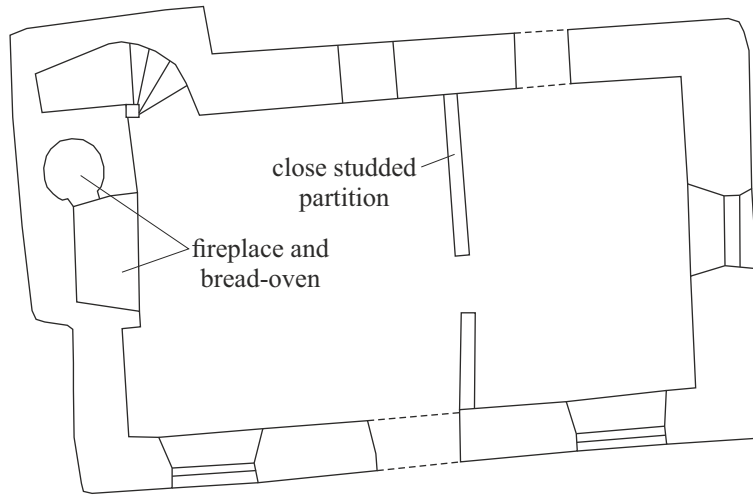
Dartmoor National Park Historic Environment Record

Civil Parish & District: Bridford, Dartmoor	National Grid Reference: SX 8210 8842	Number:
Subject: Archaeological monitoring and recording at West Park, Bridford, Devon.		Photo attached: Y
Planning Application no: 0169/16	Recipient museum: n/a	
OASIS ID: oakforda1-268750	Museum Reference no: n/a	
Contractor's reference number/code: OA1353	Dates fieldwork undertaken: 11/08/2016	
<p>Background An archaeological watching brief and historical building recording was undertaken by Oakford Archaeology in August 2016 during building work at West Park Cottage, Bridford (SX 8210 8842). The site (Fig. 1) lies in the northeast corner of the parish, close to the river Teign. West Park Cottage is a grade II Listed building dating to the mid-to-late 17th century, with a basic two-room plan with a central passage or stair hall and later modifications.</p> <p>Results The works at West Park Cottage initially included the replacement of the existing concrete kitchen floor. However, by the time of the site visit it had been decided to retain the current floor. Nonetheless, the stripping out during the refurbishment of the property permitted closer inspection of areas of the historic building fabric not previously seen by Keystone in 2006.</p> <p>The partial removal of plasterboard from the partition between the two ground floor rooms allowed the identification of the original close-studded oak frame (pl. 1). The framing is identical to the one exposed directly above on the first floor, although the original lath and wattle-and-daub has been previously removed.</p> <p>The removal of the late 19th-century brickwork narrowing exposed the earlier fireplace in the west wall (pls. 2-4). Built of granite jambs and a large chamfered oak lintel it contained a bread-oven in the north face. This was built of late 18th or early 19th century brick and presumably inserted into an earlier opening.</p> <p>The east end of the building contained an original window on the first floor. It is a small two-light window built of oak with pegged mortise-and-tenon joints. On the outside the chamfered head projects forward over the jambs and mullion. These were also chamfered and simply engage the soffit of the head. On the inside the frame was flat-faced. The removal of the plasterboard blocking in the small splayed alcove at the top of the newel stair revealed an identical window in the west elevation (pl. 5).</p> <p>Bibliography Thorpe J. 2006 <i>West Park Cottage, Swannaford, Bridford, Devon</i>. Unpublished Keystone Report.</p> <p>OASIS entry Due to the limited nature of the findings a project archive will not be produced. A summary of the investigations has been submitted to the on-line archaeological database OASIS (Online Access to the Index of archaeological InterventionS).</p>		
Recorder: MFR Steinmetzer (Oakford Archaeology)		Date sent to HER:



Fig. 1 Location of site.

Ground-floor



First-floor

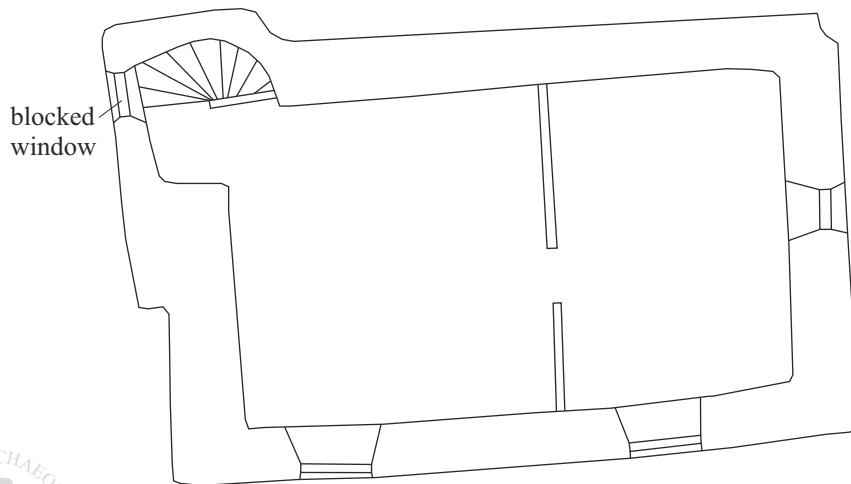


Fig. 2 Plan of West Park Cottage showing location of observations.



Pl. 1 Detail of close studded oak partition on ground-floor with original lathe holes. Looking northeast.



Pl. 2 General view of the original 17th-century fireplace. 1m scale. Looking west.



Pl. 3 General view of the original 17th-century fireplace with later bread-oven inserted into north side. 1m scale. Looking northwest.



Pl. 4 Close-up of later bread-oven showing detail of brickwork. 0.25m scale. Looking north.



Pl. 5 Close-up of original 17th-century two-light window with pegged mortise-and-tenon joints. 0.5m scale. Looking east.