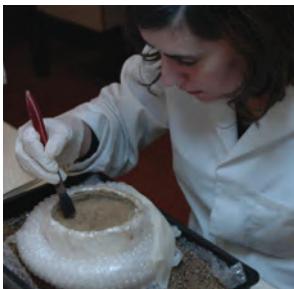
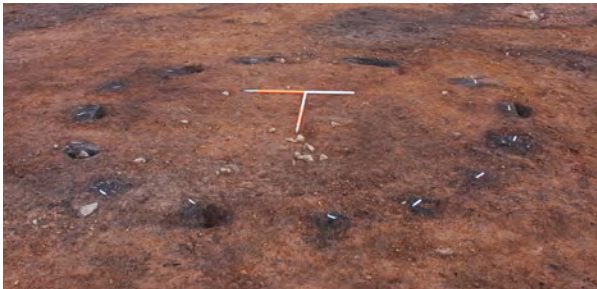


# GUARD ARCHAEOLOGY



## Barassie, Troon; Archaeological Excavation Data Structure Report Project 3330

[www.guard-archaeology.co.uk](http://www.guard-archaeology.co.uk)

## Barassie, Troon; Archaeological Excavation

### Data Structure Report

**On behalf of:** Stewart Milne Homes and Lynch Homes

**NGR:** NS 338 325

**Project Number:** 3330

**Project Manager:** John Atkinson

**Report by:** Iraia Arabaolaza

**Illustrations:** Fiona Jackson

**Approved by:**



**Date:**

20/04/2012

*This document has been prepared in accordance  
with GUARD Archaeology Limited standard operating procedures.*

**GUARD Archaeology Limited  
52 Elderpark Workspace  
100 Elderpark Street  
Glasgow  
G51 3TR**

**Tel: 0141 445 8800  
Fax: 0141 445 3222  
email: [info@guard-archaeology.co.uk](mailto:info@guard-archaeology.co.uk)**



**[www.guard-archaeology.co.uk](http://www.guard-archaeology.co.uk)**

## Contents

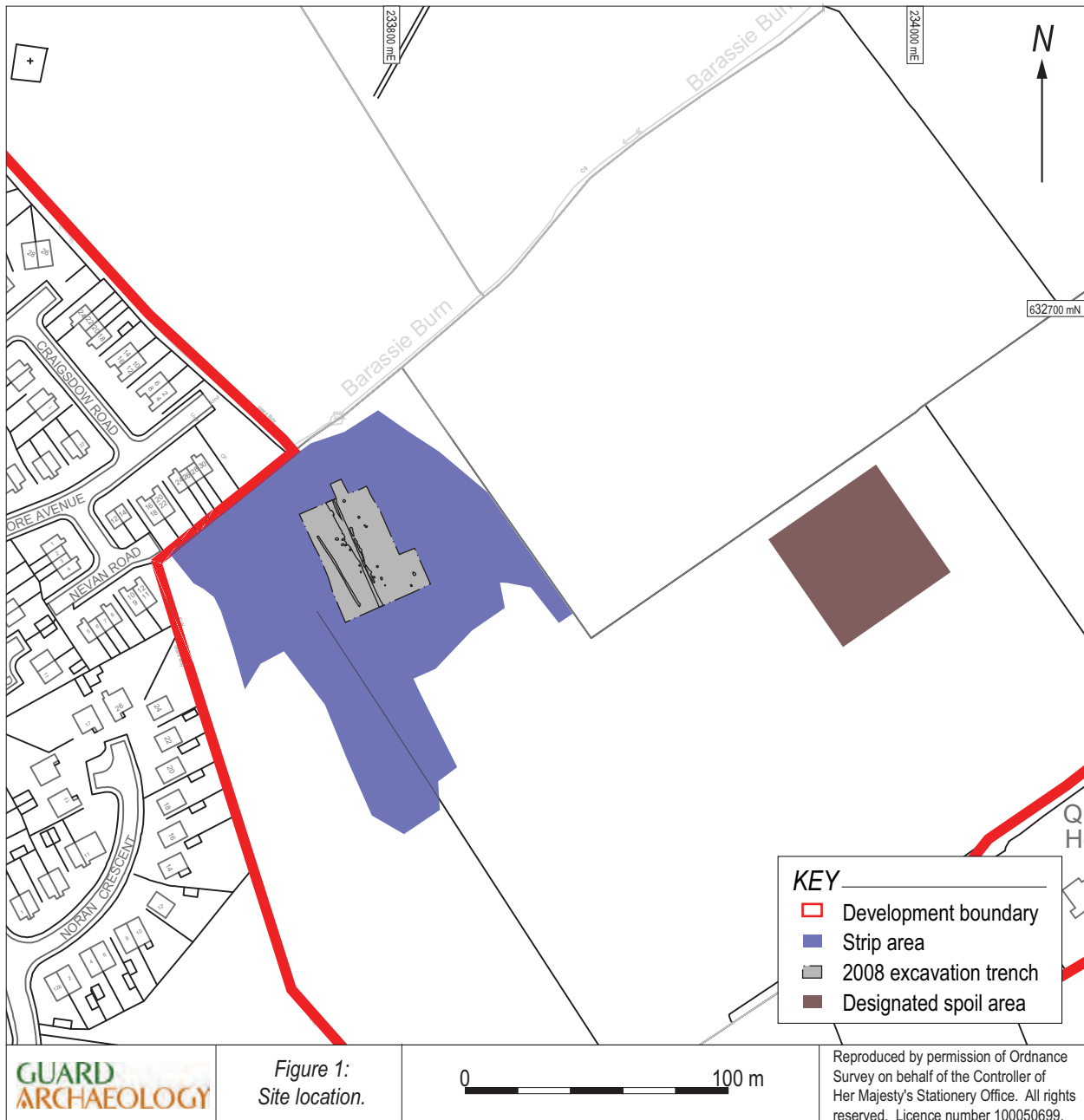
Executive Summary	5
Introduction	5
Site Location, Topography and Geology	5
Archaeological and Planning Background	5
Aims and Objectives	6
Methodology	6
2008 Excavation Trench	6
2012 Excavation Trench	7
Results	7
2008 Excavation Trench	7
2012 Excavation Trench	7
Prehistoric remains	7
Roundhouse A	8
Roundhouse B	10
Roundhouse C	11
Linear ditches and associated features	11
Group of pits at the east of site	13
Features to the north-west of site	13
Features to the north of site	14
Pits in south-east area of site	14
Medieval and post-Medieval agricultural remains	15
Discussion	15
Dating and phasing of remains	16
Post-Medieval remains	16
Recommendations	16
Acknowledgements	17
Appendices	19
Appendix A: Bibliography	19
Appendix B: Feature Descriptions	19
Appendix C: List of Finds	22
Appendix D: List of Samples	28
Appendix E: List of Drawings	30
Appendix F: List of Photographs	32
Appendix G: Discovery And Excavation Scotland Entry	44
Appendix H: Addendum to Written Scheme of Investigation	45

## List of Figures

Figure 1. Site location map	4
Figure 2. GPS post-excavation plan of archaeological features	9
Figure 3. Post-excavation plan of roundhouse A	10
Figure 4. Post-excavation plan of roundhouses B and C	12
Figure 5. Post-excavation plan of pits	14

## List of Plates

Plate 1. Pre-ex photo of feature 077	8
Plate 2: NW facing section of hearth 119	13



## Executive Summary

- 1.1 GUARD Archaeology Limited were commissioned by Stewart Milne Homes and Lynch Homes to undertake the strip, map and sample excavation of archaeological remains first uncovered during the trial trench evaluation and sample excavation at Barassie, Troon in 2008 (Becket 2008). This work was undertaken from 30 January to 21 March 2012, and revealed some 19 discrete pits, 16 postholes, 2 stakeholes, a ditch-defined roundhouse, one post-ring roundhouse, a possible post-ring roundhouse and two linear ditches as well as many cultivation furrows and linear drains known to exist from previous evaluation of the site. Prehistoric ceramic and lithics found in some of the pits have been provisionally dated between the late-Mesolithic to Late Neolithic period.

## Introduction

- 2.1 This report sets out the results of the strip, map and sample excavation of archaeological remains undertaken by GUARD Archaeology Limited, on behalf of Stewart Milne Homes and Lynch Homes on a site proposed for housing development at Barassie, Troon, South Ayrshire. The excavation followed previous archaeological evaluation and sample excavation in 2008, during which archaeological features were identified. The archaeological remains found on site form different groupings; three possible prehistoric roundhouses, a group of pits at the south-east of the site, two linear ditches and further individual features across the extended site that do not seemed to be part of a group or pattern.

## Site Location, Topography and Geology

- 3.1 The site of the proposed development is located to the north-east of Troon (NGR NS 338 325) and is identified as a greenfield housing land release site in the adopted South Ayrshire Local Plan. Currently it is used as undeveloped agricultural land and extends to 42.2 hectares in size.
- 3.2 The site is bounded to the east by the A759, which runs between Barassie and Loans; to the north by Kilmarnock Road, beyond which is existing housing at Barassie; to the west by existing housing and Struthers Primary School; and to the south by a field boundary that follows Struthers Burn, and countryside, beyond which lies the village of Loans around 360 m away.
- 3.3 The site is gently undulating agricultural land, which generally slopes down from east to west even though there are two high points within the site. Barassie Burn flows east to west across the central part of the site. At the site's western edge, the burn turns at right angles, and follows the western boundary along the rear boundaries of the existing housing going towards north and passing Kilmarnock Road. On the southern boundary of the development site lies Struthers Burn, which runs in an east-westerly direction before leaving the site and entering educational land adjacent to Struthers Primary School and Deveron Road beyond.
- 3.4 To the north, an existing group of farm buildings at Barassie Farm Steading, which was neglected and in a state of disrepair have recently been demolished. Towards the south-eastern end of the site and outside the site boundary, there are a few existing houses, known as Collenan Holdings and Cottages, by Loans.
- 3.5 The bedrock consists of Troon Volcanic Member comprising silica poor magma, while the superficial geology consists of Raised Marine Deposits, comprising clay, silt sand and gravel and Till, Devensian (British Geological Survey bgs.ac.uk).

## Archaeological and Planning Background

- 4.1 A trial trench evaluation of 236 trenches across the Barassie site was conducted in March and early April 2008 and exposed archaeological activity within trench 42 and trench 135. Trench 42, located in the WSW of the site revealed evidence in the form of two shallow pits, four stakeholes, pottery and lithic finds while one large pit filled with stones and charcoal was discovered in trench 135.



- 4.2 Following on from these discoveries, a report (Becket 2008) was produced with recommendations for further mitigation. These mitigation measures included the removal of topsoil from around both trenches, so that the full extent of any archaeology could be assessed and recorded prior to development and post-excavation analysis of the material encountered to date.
- 4.3 In July 2008, the mitigation measures were implemented. Trench 135 was expanded to cover an area 10 m long by 10 m broad and no other features were encountered. Trench 42 was expanded to 40 m by 30 m and revealed a further eleven pits and three phases of linear feature running along its length. Excavation of the pits revealed prehistoric ceramics from the Late Neolithic/Early Bronze Age, together with a small assemblage of flint and coarse stone artefacts (NMRS NS33SW 137; SMR: 61708).
- 4.4 Discussion with WoSAS during the 2008 excavation works within the expanded trench 42 led to the requirement for further topsoil stripping to occur. The pits encountered appear to be part of a linear alignment and an addendum to the original WSI was produced to deal with these features under strip, map and sample excavation conditions. Prior to the works commencing, all further fieldwork at Barassie was put on hold due to the recession.
- 4.5 In January 2012, the decision was taken to recommence the building programme at Barassie and re-submit the revised WSI for the works to the planning authority. This report consequently details the results of the 2008 excavation and the subsequent fieldwork programme.
- 4.6 Prior to the work at Barassie little was known of the sites' archaeological potential. However Mesolithic find spots had been recorded south of the site, around 0.2 km away in Loans. A flake of grey flint was found in ploughed soil at NS 343 321 in 1973, and in 1974 over forty patinated and unpatinated flint blades, cores and flakes were found at NS 346 313 (NMRS: NS33SW12; SMR: 6564).
- 4.7 Prior to the evaluation works in 2008 a Coastal Zone Assessment Survey and a Desk Based Assessment and site inspection were carried out (SMR: Ev768 and EV1207 respectively). No prehistoric remains were identified during these works, although Barassie farmstead (NMRS: NS33SW.45) situated to the north of the site, seemed to be Medieval in origin.

## Aims and Objectives

- 5.1 The project objectives are:
- to complete the excavation of features noted in July 2008 as per WoSAS requirements to the satisfaction of the planning authority;
  - to establish the presence or absence of further archaeological features within the development site by expanding the 2008 trench;
  - excavate and record any significant archaeological remains revealed during the expansion process;
  - undertake funded post-excavation analysis and publication of the results on the archaeological works should they be warranted.

## Methodology

### 2008 Excavation Trench

- 6.1 Prior to the 2012 topsoil strip commencing, the 2008 trench was cleaned by mechanical excavator and by hand in order to complete the excavation of the previously identified features. This included the excavation of up to 30% of the linear features and the full excavation of all pit features, which latterly weathered-out.

## **2012 Excavation Trench**

- 6.2 Whilst the further excavation of features was completed, the trench was expanded up to a maximum of 150 m radius of the original features revealed during the evaluation phase (Becket 2008). The expansion of the trench, in any direction, was terminated 30 m from the last archaeological feature encountered in order to retain focus on the known remains across the site. After removal of the topsoil, the exposed features were mapped using an R100 Smart Rover DGPS (Figure 2). All features were cleaned and photographed individually and in some cases in groups. The linear features were investigated (up to 30% coverage) via excavated slots in order to establish their nature, function and relative dates. Post-excavation plans at a scale of 1:20 were planned of groups of features across the site. These features included: two roundhouses, a curvilinear feature and two groups of pits. The curvilinear ditch was excavated via slots, with each slot being recorded by photography and measured section drawing before removal of the entire ditch fill. All other features were fully excavated and recorded by photography, written description and by measured section and post-excavation drawings. Environmental samples were taken from each archaeologically significant feature. Further environmental samples were taken to conduct multi-element analysis of floor deposits within the footprints of both roundhouses. All on-site recording, written, drawn and photographic, was to the standards normally pertaining in archaeological fieldwork.

## **Results**

### **2008 Excavation Trench**

- 7.1 During the partial excavation conducted in 2008 a total of 23 features including three possible postholes, two stake holes and four linear features were discovered. The four features at the south-east corner of the site were considered possibly modern as suggested by their morphology. No datable finds were found within their fills to suggest otherwise.
- 7.2 In the evaluation carried out prior to the excavation, a possible hearth with heat cracked stones and scorched soil was found (Beckett, 2008). South of this feature two possible postholes F108 and F106 (context numbers from that excavation) were encountered with a small fragment of prehistoric ceramic found within F108. Even though they were quite close to the hearth there was not any apparent pattern which could suggest a possible structure. Four stake holes were also encountered in the vicinity of the hearth, forming two parallel alignments. Two of them were dug during the evaluation phase (Beckett, 2008), a sherd of pottery was retrieved from the bottom of one of them, while the other two were excavated during the partial excavation (F140 and 141).
- 7.3 Two parallel linear features were identified running north-west/south-east across the site (F118 and F123). F118 was situated at the west site of the excavation while F123 ran through the entire centre of the site. At its north end F123 forked into another linear feature F131. A much smaller linear feature F125 was also identified to the east of F123. All of them appeared to be ditches or remains of boundaries dating to prehistory as suggested by their small finds.
- 7.4 Ten negative cut features possibly used as pits were recorded along the centre of the site: F103, 110, 112, 114, 116, 122, 128, 130, 144 and 148. Fragment of prehistoric ceramic and flint were retrieved from six of them. They were interpreted as the remains of two alignments running north-west to south-east across the site. One of them encountered at the north-east end of site was a possible posthole F110, filled with stone lining and charcoal.

## **2012 Excavation Trench**

### **Prehistoric remains**

- 7.5 The site was stripped of topsoil, revealing numerous circular and oval features, and some linear features cut into the subsoil. Three possible roundhouses were discovered on the south-west and south side of the site.

## Roundhouse A

- 7.6 At the south-west corner, a series of three elongated ditches (068, 070 and 076) and four pits (071, 072, 074 and 115) were found forming a curvilinear feature (roundhouse A). Ditch 068 was filled with dark brown moist sandy silt fill (067), which was excavated via three slots. Curvilinear in plan and orientated east/west it measured 3.4 m long by 0.6 m wide and up to 0.18 m deep. It was truncated by a field drain at its north side. To its east another curvilinear ditch (070) filled by loose dark grey brown peaty fill (069) was recorded. A small flint flake was recovered from this fill (SF 164). Overlain by fill 069, deposit 122, a light grey silt appeared to be the remains of old ground surface that silted into the ditch. The ditch (070) measured 4 m in length by 0.5 m in width and up to 0.15 m deep and it was truncated by two field drains. Further south of ditch 068 the third ditch (076) was discovered. Orientated NNW/SSE and measuring 1.6 m long by 0.4 m wide and up to 0.1 m deep. Filled by greyish brown silty clay (075) with occasional pebbles and charcoal fragments it did not contain any obvious small finds. At its eastern edge it was truncated by pit 115 a sub-circular pit, which may have contained a posthole and measured 0.5 m in diameter by 0.2 m deep. It was filled by darkish brown silty clay with occasional reddish mottling, pebbles and charcoal (116).
- 7.7 Between ditches 068 and 070 three features were encountered; 071, 072 and 074. Feature 071 a sub-oval cut measuring 0.45 m by 0.4 m and 0.2 m deep was filled by dark brown peaty silt (113). To its south another oval feature (072) measuring 0.4 m in length by 0.29 m width and 0.26 m depth was filled by dark brown silty peat (114). Neither of these features revealed any small finds or packing stones, however they were morphologically interpreted as postholes. To the west of these possible postholes and slightly off north-east of curvilinear ditch 068 a larger sub-oval shaped pit was encountered (074). It was filled by loose dark brown organic peaty silt (073) and it measured 1.6 m by 0.5 m by 0.12 m in depth. A prehistoric ceramic sherd was retrieved from this fill (SF 174).
- 7.8 In the interior of the roundhouse a rounded shallow pit 077 was discovered at the centre, slightly east of the structure. It measured 0.64 m long by 0.47 m wide and 80 mm deep and was filled by dark grey silt with occasional charcoal and cobbles (112). An area of red orange fill was found within the fill suggesting scorching (Plate 1). Together with the retrieve charcoal and cobbles this feature was interpreted as an interior hearth, as hearths normally occupied a fairly central position within the dwelling. A possible occupation layer was encountered at the interior of the roundhouse and recorded as two patchy spreads: a light grey/brown silty sand deposit (109) at the west and mid-greyish brown sandy clay with occasional charcoal flecks to the north of feature 077. Two small finds were recorded within deposit 109; a flint flake (SF 079) and a prehistoric ceramic sherd (SF 163).



Plate 1. Pre-ex photo of feature 077.

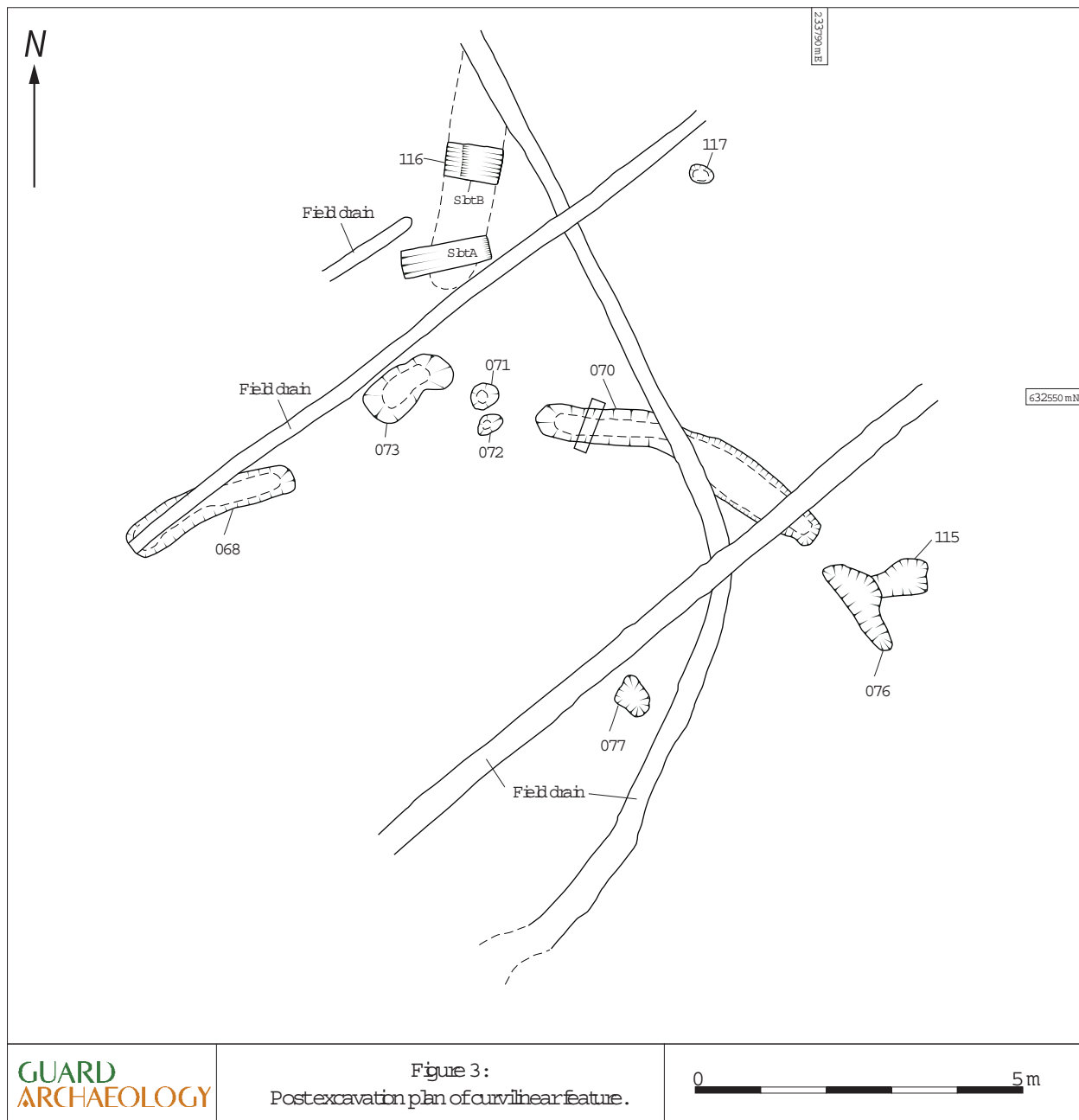
- 7.9 North-east of Roundhouse A a very shallow oval-shaped possible pit (117) measuring 0.38 m by 0.35 m and 40 mm deep was discovered. Filled by light brownish grey sandy silt (078) it contained three prehistoric ceramic fragments (SFs 169, 170, 171) and one possible fragment of pitchstone (SF 168) as well as some charcoal.





Figure 2:  
Post excavation plan

- 7.10 A large linear-shaped feature (166) orientated south/north was revealed at the north of features 071 and 072. The feature deepened towards its centre up to 0.45 m it was truncated by a rubble drain at its north side where it stopped. It was filled by two different deposits: very dark brown silty clay peat (165) and greyish brown silt with few inclusions of pebbles and charcoal (167). Five pieces of flint (SFs 286 and 299) were retrieved from fill 165, while one flint fragment (SF 300) was found in deposit 167. The feature was waterlogged during excavation which could explain the presence of peat. Its function and date are presently unknown.



## Roundhouse B

- 7.11 Situated to the north-east of Roundhouse A and south of the trench excavated in 2008, it comprised seven postholes (125, 126, 127, 131, 135, 136 and 140) forming the western side of the circle. The rest of the roundhouse was probably destroyed over the years through cultivation and an agricultural improvement such as field drains. They were quite evenly spaced in groups of two apart from posthole 125. Posthole 127 was truncated by a stone field drain which could also explain the lack of pairing for posthole 125. A combination of small finds such as prehistoric ceramic, lithics and nutshells were found in all posthole fills. In posthole 125, three fragments of ceramic (SFs 183, 184, 194) and a lithic (SF 180) were found while posthole 127 presented

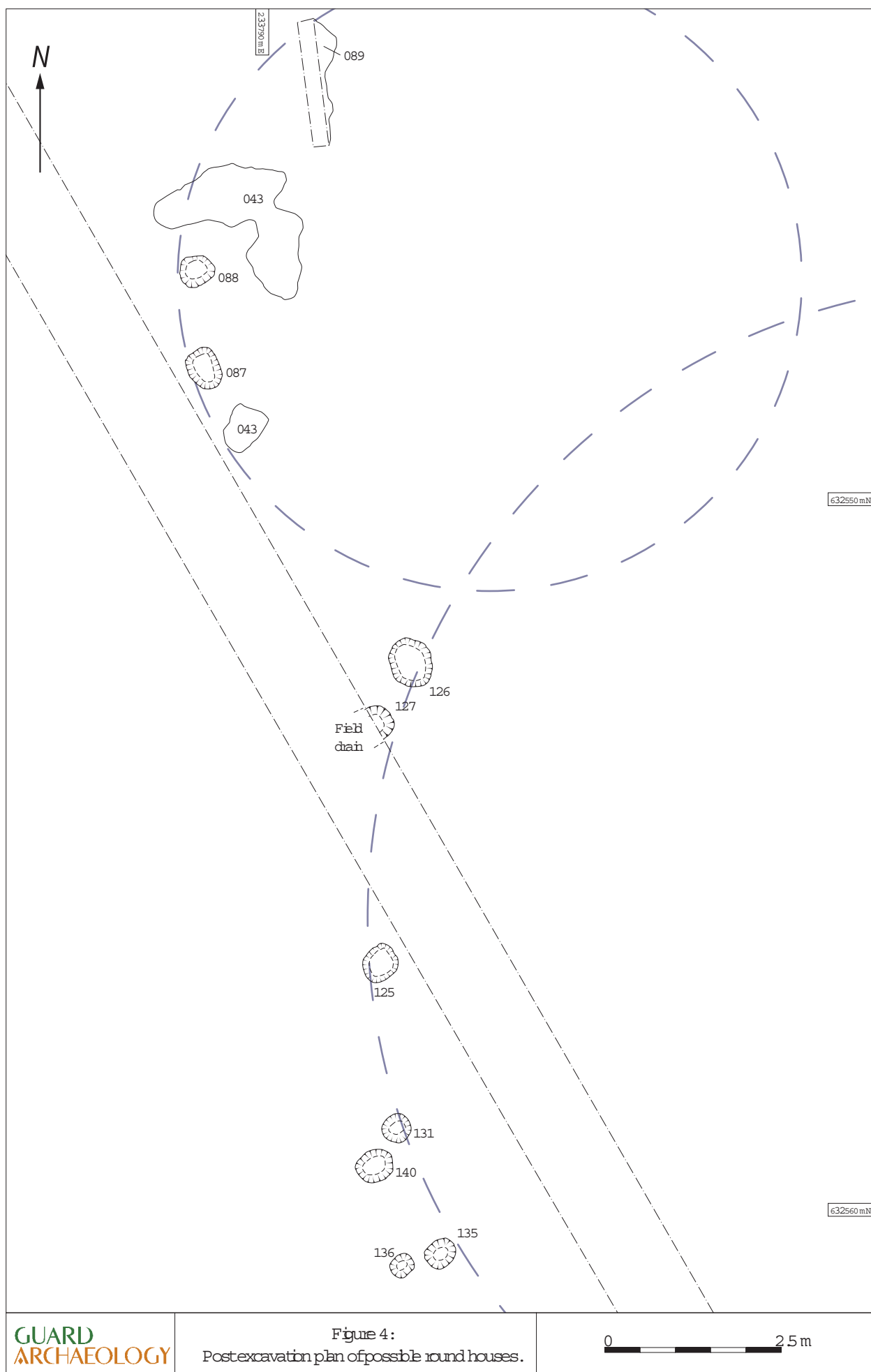
ten fragment of prehistoric ceramic including a rim (SF 192). The highest numbers of finds were found in posthole 126, which was filled by two different deposits: 086 and 130. A possible flint blade (SF 185) and six fragments of ceramic including a rim (SFs 198 and 199) were found within deposit 086. Underneath this deposit brownish black silt with charcoal and small stones inclusions (130) was encountered in which a total of ten ceramic sherds (SFs 186, 187, 188 and 197), three possible flint blades (SF 196) and nutshell fragments (SF 200) were recovered. In posthole 131, two ceramic fragments (SF 189), a possible worked stone (SF 190) and fragments of nutshell (SF 191) were found within upper fill (083). Two lithics were recovered from posthole 135 (SF 204), while five ceramic sherds (SF 202), including a rim and a flint tool (SF 203) were found in fill 136. In posthole 140 five carbonised nutshells were encountered (SF 201) as well as a ceramic rim fragment (SF 207) in the upper fill (082\_). The number of finds was quite remarkable especially of ceramic sherds, a total of 37 ceramic fragments were recovered from six postholes, including four rim sherds. All of the defining features around the structure had inclusions of charcoal and small stones which could suggest their use as structural postholes forming the exterior wall of the roundhouse.

### Roundhouse C

- 7.12 Only two postholes (087) and (088) remained from this possible roundhouse situated to the north of roundhouse B. Oval in shape they are circa 0.9 m apart from each other and they form the north-west 'corner' of the roundhouse. Both postholes were filled by mid-brown to grey/brown clay silt with sub-rounded pebbles or cobbles as well as occasional charcoal flecks. Four fragments of ceramic were found within posthole 087 (SF 182) while three more pieces of prehistoric ceramic (SF 181) and a single flint (SF 193) were encountered in posthole 088. It seems likely that as in roundhouse B these postholes were structural and formed the exterior wall of the roundhouse.
- 7.13 Patches of a possible occupation layer (043) were recorded south of posthole 087 and east of posthole 088. Five pieces of prehistoric ceramic were recovered from this light grey clayish silt with orange mottling (SFs 077, 195, 205 and 206). Another deposit (089), found further east, was possibly related to this occupation layer. Two ceramic fragments were found within this fill (SF 179).

### Linear ditches and associated features

- 7.14 Two main linear ditches (005 and 044) were encountered within the 2008 trench and extending through the south side of the site running in a NNW/SSE alignment, parallel to each other (Figure 2). Linear feature 005 passed through the middle of projected roundhouse B and east side of projected roundhouse C, while ditch 044 truncated the east side of the projected curve of roundhouse B. It was therefore most likely that these features destroyed any remains left of the roundhouses.
- 7.15 Both 005 and 044 had already been partially excavated during the excavation work in 2008 but five more slots were dug in each of them to determine their date and function. Ditch 005 revealed grey/brown silty clay (004) between 50 mm and 0.12 m deep, while ditch 044 was filled by light grey silt with orange mottling (045). Flint fragments were discovered within both deposits with a possible pitchstone (SF 211) fragment found in ditch 004. Slot B in 044 revealed two possible stake holes (104 and 106) at the centre and west side of the ditch. Both stake holes were aligned to the previous ones found during the evaluation and excavation. No clear function was determined for these features.
- 7.16 An additional linear ditch (110) running parallel to ditch 044 and truncating its west side was discovered at the centre of the 2008 trench. It was filled by mid-brown silty clay (111) and it measured circa 14.5 m in length by 1.2 m width and 0.2 m depth. No datable artefacts were found, although post-excavation analysis of its fill may recover carbonised remains that may help establish its date.
- 7.17 At the east side of ditch 044, the remains of two shallow parallel ditches (037 and 039) in alignment to each other were encountered after topsoil was stripped. They were both filled



by grey/brown silty clay and two flint fragment (SFs 72 and 75) were found within 037. A series of four postholes (041, 046, 048 and 050) were found running parallel to ditch 044 and in alignment with ditches 037 and 039 too. Datable evidence in the form of small find was found in all postholes with the exception of 050. Their function remains unclear but their location suggests a possible association with ditch 044 and smaller ditches 037 and 039.

- 7.18 In the limit of the south side of the old trench and the south extension two possible pits (123 and 139) were encountered east of ditch 044. While the function of pit 139 remains unclear, the considerable amount of charcoal in pit 123 suggests its use as fire pit. No datable finds were found in neither of them. Further south, but also east of ditch 044, a possible field drain (143) was discovered. Linear in shape and orientated east/west towards the natural slope, it was filled by grey brown gravely silt (144) in which a flint core (SF 221) was found.
- 7.19 A single semi-oval posthole (057) with no obvious packing stones was located north-east of ditch 044. East of the southern end of ditch 005, another single fire pit was identified (137). It was filled by loose black/brown silt sand deposit with inclusions of moderate charcoal deposited in lenses (138). None of these features had datable finds retrieved from their fills.

### Group of pits at the east of site

- 7.20 A series of four pits with no particular pattern or obvious focal point were discovered at the east side of the site. Two oval shaped pits (149 and 152) filled by dark brown silty sand and some charcoal had quite similar cuts, although pit 152 was 0.2 m deeper than pit 149. Cremated bone was retrieved from the deposit within 152.
- 7.21 Between these two pits another shallower pit (150) was found. It was filled by mid-brown silty sand with frequent inclusions of charcoal and occasional charred stones (095). Three flint flakes one of which was burnt were retrieved within this deposit (SFs 227 and 229) as well as occasional cremated bone and nutshell fragments. The subsoil underneath the feature was scorched suggesting that this pit may have been used as a hearth.
- 7.22 The largest sub-rounded pit (163) measured 2 m in length by 1.36 m in width and 0.48 in depth was filled by two deposits: grey/brown silt with occasional charcoal and cremated bone (169) overlying a more gravely grey brown silt with frequent charcoal and occasional cremated bone (162). A total of twenty seven flint fragments were found within the fill (162), as well as a significant amount of nutshell fragments.
- 7.23 The function of any of these pits is presently unknown, apart from the possible hearth. However it may become apparent through post-excavation analysis of their fills and small finds.

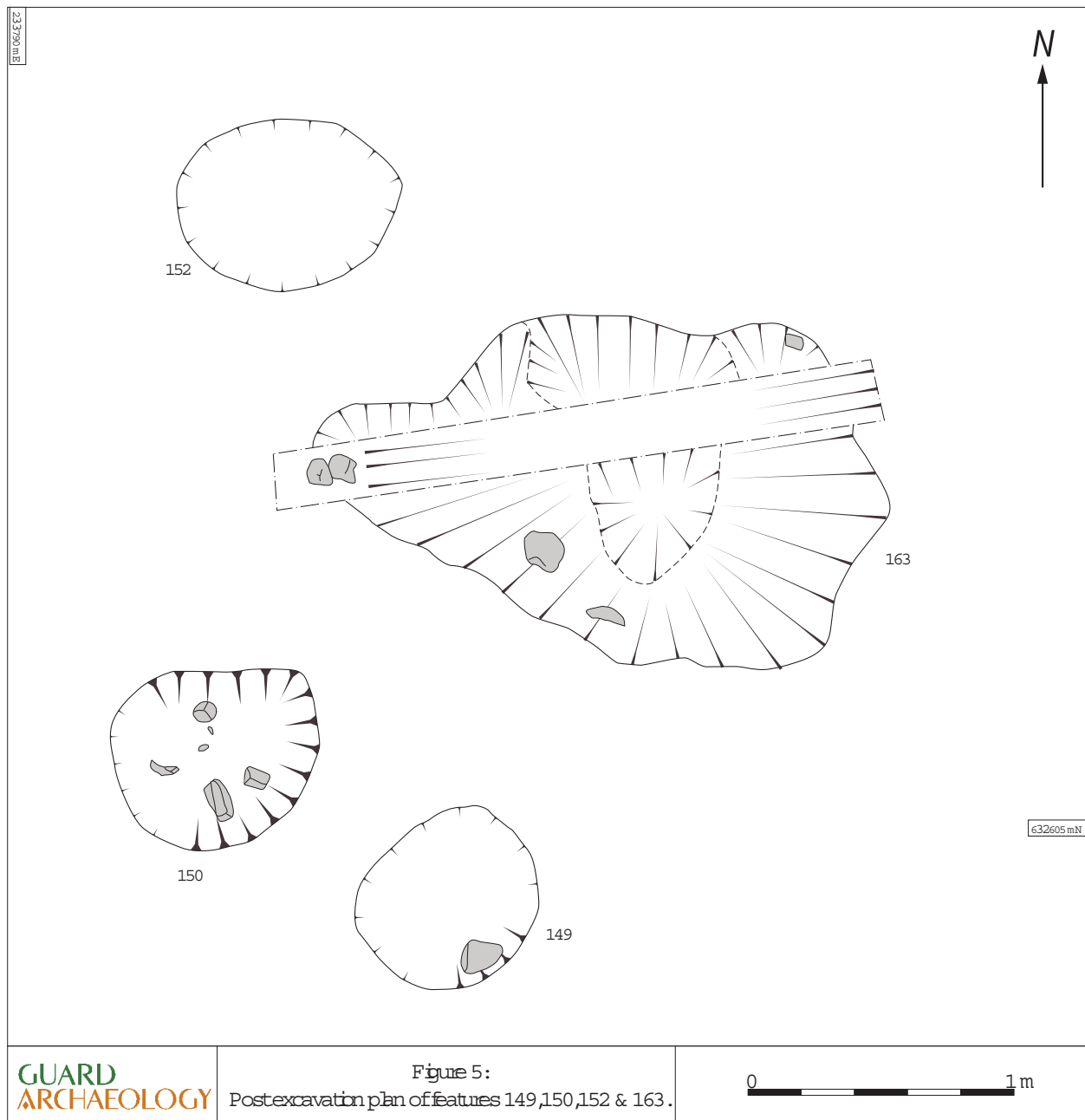
### Features to the north-west of site

- 7.24 Five negative-cut features (010, 016, 108, 118 and 119) were found at the north-west area of site with no apparent pattern. Heat affected stones and charcoal deposits found within pits 010 and 119 implied that they may have been used as hearths. A fragment of burnt flint (SF 010) was also found in 010 (Plate 2). The function of the other three pits is presently unknown although small finds found in all of them should help clarify their purpose and date. Most of the scattered small finds were found in the vicinity of these features. It is not clear if the high concentration of finds is signalling an occupation area or if it is the result of them being drawn into the deepest area of the field's slope by cultivation.



Plate 2: NW facing section of hearth 119.





### Features to the north of site

**7.25** Two pits (031 and 147) were discovered north of the 2008 trench. Pit 031 contained burnt material (charcoal) in its upper fill area and around the edges of the cut. It was truncated in half by modern test trench. No scorching was found but the amount of charcoal suggests that the material may be the result of fire. Shallow pit 147, south-east of pit 031, included several sherds of ceramic (SFs 223, 224, 225) and a flint core (SF 226). No apparent function was established for this pit.

### Pits in south-east area of site

**7.26** There were three isolated archaeological pits (098, 099 and 158) with no evident pattern at the south-east corner of site. Pit 098, filled by dark grey/brown silty sand (097) contained charcoal, burnt bone and nutshells as well as eleven worked burnt flints (SF 126) and two fragments of flint (SF 118). Large pit 099 was filled by a mixture of mid-brown silty clay and reddish brown silty sand deposited in irregular bands and patches. Eight fragments of lithics were found in its fill (SFs 209 and 217). North of pit 099 an oval-cut pit (158) filled by mid-brown silty sand was discovered. None of these three pits had a clear function, although pit 097 was filled by burnt or

fire related material. Post-excavation study of the small finds and samples taken from their fills may determine their function and date.

### Medieval and post-Medieval agricultural remains

- 7.27 A series of linear cuts (154) running approximately NNE/SSW across the entire east of site were found to be the remains of the rig and furrow cultivation method practised in the Medieval and post-Medieval periods. The furrows were created by digging out soil to pile onto the cultivation rig with the furrow being used for drainage. The orientation of the rig & furrow is significant as the furrows would have drained into the lowest lying portion of the field, where the original course of the Barassie Burn ran prior to its canalisation and re-directing to the north. The furrows were 2-3 m wide and were quite evenly spaced along the length of the eastern side of the site, being generally about 7-8 m apart. Investigation slots were excavated to determine their depth and describe their fill. However their precise date could not be established through excavation since no finds were found within.
- 7.28 Several field drains were identified along the centre and west site of the field. They generally followed the natural slope of the field, from east to west although some stone field drains ran north to south.

### Discussion

- 8.1 The archaeological remains found at Barassie, Troon indicate that the area had been used for occupation possibly from as early as the Later Mesolithic period. There is certainly strong evidence of structural remains containing fragments of Neolithic material culture. The site was also cultivated from at least the Medieval/post-Medieval period until modern times. The presence of Mesolithic assemblages is of particular note as few inland sites had been recorded across Scotland, possibly due to the hunter-gatherer/fisher nature of nomadic society. Often the sites are associated with scattered finds or middens (Finlayson 1998). Surface lithic finds were discovered south of the site at Loans, Troon (NMRS: NS33SW12; SMR: 6564) and much further north at Shewalton Moor (NMRS: NS33NW 16) and are also known from nearby Monktonhead Farm (NMRS: NS32NE 15, NS32NE 26; SMR: 6249, 6261).
- 8.2 Additional prehistoric settlement is evident from the discovery of fragmentary remains of three possible roundhouses, although the field systems often associated with these dwelling were not found, and may lie outside the development site. Roundhouse A was defined by a circular ring ditch that measured 14.6 m in diameter, and is of comparable size and structure to known prehistoric Structure A at Seafeld West near Inverness (Cressey and Anderson 2011). Roundhouse B, at 17.8 m in putative diameter, is on the larger side of roundhouses, similar in size to the Structure B's outer ring at Seafeld West near Inverness (Cressey and Anderson 2011), although not in form. Structurally, both Roundhouse B and C are comparable to posthole circle found in Lamb's Nursery, Dalkeith (Cook 2000) and Structure 2 at Blairhall Burn (Strachan, Ralston & Finlayson 1998).
- 8.3 In Britain, roundhouses often have entrances at the south-east, presumably in order to avoid the prevailing winds, although variations on this configuration are not unknown. The entrance is usually visible as a break in the circuit of the ditch and is often flanked by large structural postholes that would have held the upright timbers for the doorway. At Barassie, the evidence for an entrance to these dwellings is not clear-cut due to later truncation. Moreover, only in one of the roundhouses was an interior hearth found, Roundhouse A. The lack of hearth in the other roundhouses could be the result of later truncation from cultivation or could indicate the use of these structures as enclosure rather than settlement. Roundhouses frequently present structural postholes in their interior forming concentric structures which would support the roof. The fact that in Roundhouse B and C none of these interior features were present may lead us to consider them as enclosures. However post-excavation analysis should help clarify their function.
- 8.4 The prehistoric features outside the roundhouses are rather enigmatic, as there is no clear

focus for these remains, and the function of many of the pits has not yet been established. While there is evidence for episodes of burning in pits (010, 031, 077, 119, 123, 137 and 150), the excavation could only identify three of them as possible hearths (077, 119 and 150). Post-excavation processing of samples from the fills of these pits may be used to extract, for example, cereal grains and burnt bone that would suggest a domestic or ceremonial use, or waste material relating the manufacture of ceramics or stone tools.

- 8.5 The linear features encountered across the old trench and southern end of the site were thought to be boundary ditches. They could be part of the field system associated with Roundhouse A and they are later in date than Roundhouse B and C since both buildings appear to be truncated by the ditches.

### Dating and phasing of remains

- 8.6 Some of the small finds recovered during excavation, suggested that the site had been used since the Mesolithic period (ca. 8000-4000 BC). Consequently Barassie could be included in a broader area which saw prehistoric activity during the late Mesolithic period together with flint scatters found at Loans, Shewalton Moor and Monktonhead farm. The presence of Later Neolithic ceramic sherds, most notably impressed wares also signifies that the site may have been used up to the dawn of the Bronze Age.
- 8.7 It is difficult to ascribe an accurate date to any of the roundhouses, linear features or pits; however the post-excavation analysis of the finds encountered within the features as well as any carbonised remains from environmental samples should provide a suitable datable sequence.

### Post-Medieval remains

- 8.8 The rig and furrows encountered at the site terminated to the east of the palaeo-channel that represents the western boundary of the archaeological site and is likely to be the original course of the Barassie burn before it was canalised. The Burn is depicted in the late sixteenth century by Timothy Pont, and in Blaeu's Atlas of 1656 and Armstrong's 'New Map of Ayrshire' in 1775 as running NE/SW probably across the north-west area of site. In 1832 John Thomson's map depicted the burn as it is today. It seems probable that the re-coursing of the burn was conducted at the time of agricultural improvements in Ayrshire.

### Recommendations

- 9.1 The archaeological remains found at Barassie, Troon indicate that the site had several phases of use from prehistoric times through to modern days. In order to more fully understand the story of this site during these phases, it is recommended that a programme of post-excavation analysis and publication is undertaken in line with a post-excavation research design (PERD) agreed between the developers and the Planning Authority.
- 9.2 The PERD should include for the following elements:
- processing of selected soil samples for the extraction of charcoal and the retrieval of any datable artefacts;
  - radiocarbon dating of selected charcoal samples in order to obtain date-ranges for the prehistoric features;
  - analysis of artefacts by a recognised specialist to establish their provenance and function;
  - illustration of selected artefacts for use in an archaeological publication, and
  - publication of the excavation results in an appropriate archaeological publication.
- 9.3 GUARD Archaeology would stress that these recommendations are intended for guidance only.

While the recommended mitigation strategy was developed following consultation with West of Scotland Archaeology Service (WoSAS) final decisions on the nature and extent of any future archaeological work rest with the planning authority.

## Acknowledgements

- 10.1 GUARD Archaeology would like to thank Stewart Milne Homes and Lynch Homes for their assistance. Plant and drivers were supplied by Brown Plant Hire. Technical support was from Aileen Maule and John Kiely. A survey of the site and the archaeological features was conducted by Fiona Jackson. The illustrations were produced by Gillian McSwan, who also desk-top published it. The project was managed for GUARD Archaeology by John Atkinson. The director was assisted in the field by Alan Hunter Blair, Kevin Grant, Maureen Kilpatrick, Kevin Mooney, Farshid G. Namini, Christine Rennie, Beth Spence, Claire Shaw, Rowena Thomson and Scott Wilson.

**Barassie, Troon; Archaeological Excavation**

**Data Structure Report**

**Section 2: Appendices**



**[www.guard-archaeology.co.uk](http://www.guard-archaeology.co.uk)**



## Appendices

### Appendix A: Bibliography

Cook, M 2000 'Excavation of Neolithic and Bronze Age settlement features at Lamb's Nursery, Dalkeith, Midlothian', *Proc Soc Antiq Scot*, vol.130:93-113.

Cressey, M & Sheridan, A 2003 'The excavation of a Bronze Age cemetery at Seafeld West, near Inverness, Highland', *Proc Soc Antiq Scot*, 133: 47–84.

Dalglish, C 2003 Barassie, Troon. A Desk based assessment and site inspection on behalf of Mark Turnbull Landscape Architect. GUARD unpublished report.

Lacaille, A D 1930 'Mesolithic implements from Ayrshire', *Proc Soc Antiq Scot*, vol.64: 34-48

Macneill, M 1973 'Loans', *Discovery and Excavation in Scotland*, pp.16.

Macneill, M 1974 'Loans, flints', *Discovery and Excavation in Scotland*, pp.23. RCAHMS, The Royal Commission on the Ancient and Historical Monuments of Scotland. The archaeological sites and monuments of North Kyle, Kyle and Carrick District, Strathclyde Region. Edinburgh.(1985)

Strachan, R; Ralston I & Finlayson, B 1998 'Neolithic and later prehistoric structures, and early medieval metal-working at Blairhall Burn, Amisfield, Dumfriesshire', *Proc Soc Antiq Scot*, vol.128:55-94.

#### Cartographic sources

Pont, T and Blaue, J 1654. *Coila Provincia or The province of Kyle*. Amsterdam.

Roy, W. 1747-55. *Military Survey of Scotland*.

Armstrong, A. 1775. *A New Map of Ayrshire*.

Thomson, J. 1832. *Northern part of Ayrshire. Southern part*. Edinburgh.

#### On-line sources

British Geological Survey [www.bgs.ac.uk](http://www.bgs.ac.uk)

Royal Commission for the Ancient and Historical Monuments of Scotland, Pastmap and Canmore searches [www.rchams.gov.uk](http://www.rchams.gov.uk)

National Library of Scotland digital map collection [www.nls.uk](http://www.nls.uk)

### Appendix B: Feature Descriptions

Context No.	Area	Description	Interpretation
001		Mid brown silty loam	Topsoil
002	Old trench	Mid brown silt	Topsoil/overgrow
003		Dark brown orange sand and gravel	Subsoil
004	Old trench/ South	Grey brown silty clay	Fill of ditch (005)
005	Old trench/ South	Linear shaped cut filled by (004)	Cut of ditch
006	West	Light brown clayish silt	Interface
009	West	Brown grey clayish silt	Possible original ground floor
010	West	Oval shaped cut filled by (011)	Cut of hearth
011	West	Grey brown silty clay	Fill of hearth (010)

Context No.	Area	Description	Interpretation
012	West	Rectangular cut filled by (013)	Cut of modern stake hole
013	West	Dark grey/black clay	Fill of (012)
015	West	Yellow brown silt with mottled dark brown	Charcoal smear
016	West	Sub-oval shaped cut filled by (017)	Cut of pit
017	West	Mid brown silt/sand	Fill of pit (016)
018	West	Grey silty clay	Charcoal spread
019	West	Black brown silt	Charcoal spread
021	West	Dark grey/black silt	Charcoal smear
022	West	Roughly square cut filled by (023)	Modern cut
023	West	Grey clay	Fill of modern cut (022)
024	Old trench	Sub-rounded cut filled by (025)	Cut of pit
025	Old trench	Dark grey brown gravelly silt	Fill of pit (024)
027	Old trench	Irregular oval cut filled by (028)	Cut of pit
028	Old trench	Pinkish brown sandy silt	Fill of pit (027)
029	Old trench	Sub-rounded oval cut filled by (030)	Cut of pit
030	Old trench	Dark grey brown gravelly silty sand	Fill of pit (029)
031	North	Roughly circular cut filled by (032)	Cut of fire pit
032	North	Pale yellow to red silt	Fill of fire pit (031)
033	Old trench	Grey brown sand and clay	Fill of possible pit (034)
034	Old trench	Sub linear cut filled by (033)	Cut of possible pit
035	Old trench	Sub rectangular cut filled by (036,052,054,055,056)	Cut of possible pit
036	Old trench	Mid grey brown clay silt	Fill of possible pit (035)
037	Old trench	Sub-linear cut filled by (038)	Cut of possible ditch
038	Old trench	Grey brown silty clay	Fill of ditch (037)
039	Old trench	Irregular linear cut filled by (040)	Cut of possible ditch
040	Old trench	Greyish brown silty clay	Fill of ditch (039)
041	Old trench	Roughly circular cut filled by (042)	Cut of posthole
042	Old trench	Grey brown silty clay	Fill of posthole (041)
043	West	Light grey clayish silt with orange mottling	Possible original ground floor
044	Old trench/ South	Linear shaped cut filled by (045)	Cut of ditch
045	Old trench/ South	Light grey silt with orange mottling	Fill of ditch (045)
046	Old trench	Roughly circular cut filled by (047)	Cut of posthole
047	Old trench	Grey brown silty clay	Fill of posthole (046)
048	Old trench	Roughly circular cut filled by (048)	Cut of posthole
049	Old trench	Grey brown silty clay	Fill of posthole (048)
050	Old trench	Roughly circular cut filled by (051)	Cut of posthole
051	Old trench	Grey brown silty clay	Fill of posthole (050)
052	Old trench	Mid orange brown sandy clay silt	Fill of possible pit (035)
053	Old trench	Square cut of slot	Cut in pit (035)
054	Old trench	Grey brown silty clay	Fill of possible pit (035)
055	Old trench	Light orange brown silt	Fill of possible pit (035)
056	Old trench	Orange brown sand silt	Fill of possible pit (035)
057	Old trench	Semi-oval cut filled by (058)	Cut of posthole
058	Old trench	Mid grey coarse silt	Fill of posthole (057)
059	Old trench	Coarse silt sand deposit	Deposit over (058)
060	SW	Dark mottled orange brown silt	Possible original ground floor spread
061	North	Blue/grey silt	Deposit of paleochannel
062	North	Cream/beige silt	Fluvial deposit
063	North	Mottled creamy grey silt	Fluvial deposit
064	NW	Grey black silty sand	Fill of pit (118)
065	West	Black silt with grey brown pockets	Fill of possible hearth (119)
066	West	Black silty clay and charcoal	Deposit smear

Context No.	Area	Description	Interpretation
067	SW	Dark brown humic sandy silt	Fill of curvilinear ditch (068)
068	SW	Curvilinear ditch probably same as (070 and 076)	Cut of curvilinear ditch
069	SW	Dark grey brown peaty fill	Fill of curvilinear ditch (070)
070	SW	Curvilinear ditch probably same as (068 and 076)	Cut of curvilinear ditch
071	SW	Sub-oval cut filled by (113)	Cut of p/h or pit?
072	SW	Roughly oval cut filled by (114)	Cut of p/h or pit?
073	SW	Dark brown organic peaty silt	Fill of pit (074)
074	SW	Kidney bean shaped cut filled by (073)	Cut of pit
075	SW	Greyish brown silty clay	Fill of curvilinear ditch (076)
076	SW	Curvilinear ditch probably same as (068 and 070)	Cut of curvilinear ditch
077	SW	Rounded shallow cut filled by (112)	Cut of possible hearth
078	SW	Light brownish grey sandy silt	Fill of shallow pit (117)
080	West	Mid grey brown with orange mottling sandy clay	Fill of posthole (135)
081	West	Mid grey brown with orange mottling sandy clay	Fill of posthole (136)
082	West	Grey brown silty clay	Fill of posthole (140)
083	West	Light grey brown silty clay	Fill of posthole (131)
084	West	Grey brown gravelly silt	Fill of posthole (125)
085	West	Mid grey brown sandy clay	Fill of posthole (127)
086	West	Mid brown silty clay	Fill of posthole (126)
087	West	Oval shaped cut filled by (129)	Cut of posthole
088	West	Roughly oval shaped cut filled by (128)	Cut of posthole
089	West	Grey brown silty sand	Spread or occupation layer
091	Old trench	Grey brown silt	Fill of pit (139)
092	Old trench	Brownish black sandy silt	Fill of fire pit (123)
093	North	Brown grey gravelly silt	Fill overlaying (153)
094	North	Dark greyish brown sandy silt	Fill of pit (147)
095	East	Mid brown silty sand	Fill of hearth (150)
097	East	Dark grey brown silty sand	Fill of pit (098)
098	East	Sub-rectangular cut filled by (097)	Cut of pit
099	East	Eight' shaped cut filled (100)	Cut of pit
100	East	Mid brown silty clay	Fill of pit (099)
102	SW	Mid grey brown sandy clay	Charcoal rich deposit
103	Old trench	Light brown silt	Fill of (104)
104	Old trench	Oval cut filled by (103)	Cut of possible stakehole
105	Old trench	Light brown silt	Fill of (105)
106	Old trench	Oval cut filled by (105)	Cut of possible stakehole
107	West	Mid grey brown sandy clay	Fill of (108)
108	West	Sub-oval cut filled by (107)	Cut of possible pit
109	SW	Light grey brown silty sand	Possible original ground floor
110	Old trench	Linear cut filled by (111)	Cut of ditch
111	Old trench	Mid brown silty clay	Fill of ditch (110)
112	SW	Dark grey blacksilt with red-orange area	Fill of possible hearth (077)
113	SW	Dark brown peaty silt	Fill of (071)
114	SW	Dark brown peaty silt	Fill of (072)
115	SW	Sub circular cut filled by (116)	Cut of p/h or pit?
116	SW	Darkish brown silty clay with reddish mottling	Fill of (115)
117	SW	Oval shaped cut filled by (078)	Cut of shallow pit
118	NW	Sub circular cut filled by (064)	Cut of pit
119	NW	Rounded cut filled by (065)	Cut of possible hearth
122	South	Light grey silt	Fill of ditch (070)
123	Old trench	Roughly sub-circular cut filled by (092)	Cut for fire pit
125	West	Rounded shaped cut filled by (084)	Cut of posthole
126	West	Circular cut filled by (130) and (086)	Cut of posthole
127	West	Circular cut filled by (085)	Cut of posthole

Context No.	Area	Description	Interpretation
128	West	Mid brown clay silt	Fill of (088)
129	West	Grey brown clay silt	Fill of (087)
130	West	Brownish black silt	Fill of (126)
131	West	Circular cut filled by (083), (132) and (133)	Cut of posthole
132	West	Dark grey brown silty clay	Fill of (131)
133	West	Orange yellow silty clay	Fill of (131)
135	West	Sub-circular cut filled by (080)	Cut of posthole
136	West	Sub-circular cut filled by (081)	Cut of posthole
137	South	Oval shaped cut filled by (138)	Cut of fire pit
138	South	Black/brown silt sand	Fill of fire pit (137)
139	Old trench	Sub-rounded cut filled by (091)	Cut of pit
140	West	Circular cut filled by (082), (141) and (142)	Cut of posthole
141	West	Orange brown silty clay	Fill of posthole (140)
142	West	Dark grey brown silty clay	Fill of posthole (140)
143	South	Sub-angular linear cut filled by (144)	Cut of possible field drain
144	South	Grey brown gravelly silt	Fill of (143)
147	North	Rounded cut filled by (094)	Cut of pit
148	East	Dark brown silty sand	Fill of pit (149)
149	East	Roughly oval shaped cut filled by (148)	Cut of pit
150	East	Oval shaped shallow pit filled by (095)	Cut for hearth
151	East	Dark brown silty sand	Fill of pit (152)
152	East	Roughly oval shaped cut filled by (128)	Cut of pit
153	North	Dark grey/ black charcoal/pottery??	Deposit of charcoal or degraded pottery
154	East	Dark greyish brown sandy silt	Fill of furrow (155)
155	East	Linear cut filled by (154)	Cut of furrow
157	East	Mid brown silty sand	Fill of pit (158)
158	East	Oval cut filled by (157)	Cut of pit
162	East	Grey brown silt gravelly	Fill of pit (163)
163	East	Sub-rounded cut filled by (162) and (169)	Cut of pit
164	SW	Mid greyish brown sandy clay	Possible original ground floor
165	SW	Very dark brown silty clay - peaty	Fill of (166)
166	SW	Linear shaped cut filled by (165) and (167)	Cut of ditch/paleochannel?
167	SW	Greyish brown silt	Fill of (166)
169	East	Grey brown silt	Fill of pit (163)

## Appendix C: List of Finds

Find No.	Area	Context No.	No. of Pieces	Material	Description
1	Old trench	004	1	Lithic	Worked flint
2	Old trench	004	1	Lithic	Worked flint
3	Old trench	004	1	Lithic	Burnt? flint
4	West	009	1	Lithic	Burnt flint
5	Old trench	009	1	Lithic	Flint fragment
6	West	002	1	Lithic	Flint fragment
7	West	009	1	Lithic	Burnt flint
8	West	009	1	Lithic	Flint fragment
9	West	011	1	Lithic	Burnt flint
10	West	009	3	Lithic	Possibly worked quartz
11	West	009	1	Lithic	Chunk
12	West	009	1	Lithic	Flint fragment
13	West	009	1	Lithic	Flint fragment
14	West	009	3	Ceramic	Body sherds
15	West	009	1	Lithic	Flint fragment

Find No.	Area	Context No.	No. of Pieces	Material	Description
16	West	009	1	Lithic	Flint fragment
17	West	009	1	Lithic	Flint fragment
18	West	009	1	Lithic	Burnt flint
19	West	009	1	Lithic	Burnt flint
20	West	019	1	Lithic	Burnt flint
21	West	023	1	Lithic	Worked flint
22	West	009	1	Lithic	Burnt possible worked flint
23	West	009	1	Lithic	Chunk
24	West	009	1	Lithic	Worked flint
25	West	009	2	Ceramic	Possibly rim sherds
26	West	009	1	Lithic	Worked flint
27	West	009	1	Lithic	Worked flint
28	West	009	1	Lithic	Worked flint
29	West	009	1	Ceramic	Small sherd
30	West	009	1	Ceramic	Small sherd
31	West	009	1	Lithic	Small core
32	West	009	1	Lithic	Small core
33	West	009	1	Lithic	Debitage
34	West	009	1	Lithic	Worked flint
35	West	009	1	Lithic	Burnt possible worked flint
36	West	009	1	Lithic	Small core
37	West	009	1	Lithic	Small core
38	West	009	1	Lithic	Possible core
39	West	009	1	Lithic	Flint fragment
40	West	009	1	Lithic	Core
41	Old trench	002/009?	1	Lithic	Worked flint
42	Old trench	002	1	Lithic	Worked chert
43	West	009	1	Lithic	Small core
44	Old trench	002	1	Lithic	Flint fragment
45	West	009	1	Lithic	Flint fragment
46	West	009	1	Lithic	Small core
47	West	009	1	Lithic	Burnt flint
48	Old trench	002/009?	1	Lithic	Flint fragment
49	West	009	1	Lithic	Flint nodule
50	West	009	1	Lithic	Flint fragment
51	West	009	1	Lithic	Flint fragment
52	West	009	1	Lithic	Core
53	West	009	1	Lithic	Worked flint, blade
54	West	009	1	Lithic	Small flint blade
55	Old trench	004	1	Lithic	Worked flint
56	Old trench	004	1	Lithic	Worked flint
57	Old trench	004	1	Lithic	Worked flint core
58	Old trench	002	1	Lithic	Worked flint
59	West	009	1	Lithic	Worked quartz
60	North	-	1	Lithic	Flint fragment
61	North	-	1	-	Flint fragment
62	Old trench	004	1	Lithic	Flint fragment
63	Old trench	004	1	Lithic	Flint fragment
64	West	009	1	Lithic	Possibly burnt flint
65	North	-	1	Ceramic	Sherd
66	North	-	1	Lithic	Flint fragment
67	North	-	1	Ceramic	Sherd
68	North	-	1	Lithic	Flint fragment
69	Old trench	004	1	Lithic	Flint fragment
70	Old trench	036	1	Lithic	Flint fragment



Find No.	Area	Context No.	No. of Pieces	Material	Description
71	Old trench	004	1	Lithic	Flint fragment
72	Old trench	038	1	Lithic	Flint fragment
73	Old trench	036	1	Lithic	Flint fragment
74	Old trench	038	1	Lithic	Flint fragment
75	Old trench	038	1	Lithic	Worked flint
76	Old trench	042	1	Lithic	Flint fragment
77	South	043	1+ crumb	Ceramic	Sherd
78	South	Field drain	1	Ceramic	Sherd
79	South	109	1	Lithic	Flint fragment
80	South	-	2	Lithic	Flint fragment and microlithic
81	South	-	1+ crumb	Ceramic	Sherd
82	South	Field drain	1	Stone?	Crayon?modern?
83	Old trench	045	1	Lithic	Flint fragment
84	Old trench	047	1	Lithic	Flint fragment
85	Old trench	002	1	Lithic	Core
86	Old trench	002	1	Lithic	Flint fragment
87	Old trench	002	1	Metal	Iron ring with hinge, modern
89	Old trench	049	1	Lithic	Chert fragment
90	South	Unstratified	3	Lithic	Flint fragment
91	South	Unstratified	3	Lithic	Worked flint
92	Old trench	002	1	Lithic	Flint fragment
93	Old trench	044	2	Lithic	Flint fragment
94	Old trench	059	1	Lithic	Flint fragment
95	Old trench	003	1	Lithic	Flint fragment
96	Old trench	003	1	Lithic	Flint fragment
97	Old trench	003	1	Lithic	Flint fragment
98	Old trench	002	1	Ceramic	Green glazed sherd
99	West	Unstratified	1	Lithic	Flint fragment
100	Old trench	002	1	Lithic	Core
101	Old trench	002	1	Lithic	Flint fragment
102	South	-	1	Ceramic	Sherd
103	SW	Unstratified	1	Lithic	Flint fragment
104	North	-	1	Lithic	Flint fragment
105	North	-	1	Lithic	Chert fragment
106	South	060	9	Lithic	Flint fragment
107	South	060	1	Ceramic	Sherd
108	South	060	1	Lithic	Flint fragment
109	South	060	1	Lithic	Flint fragment
110	South	060	1	Ceramic	Sherd
111	South	060	1	Lithic	Flint fragment
112	Old trench	002	1	Lithic	Flint fragment
113	Old trench	002	2	Lithic	Flint fragment
114	West	078	6	Ceramic	Mixed pottery sherds
115	West	078	1	Lithic	Flint fragment
116	West	Unstratified	1	Lithic	Flint fragment
117	West	Unstratified	1	Ceramic	Sherd
118	NE	097	2	Lithic	Flint fragment
119	NE	097	1	Botanics	Nutshells recorded (empty bag)
120	SW	Unstratified	1	Lithic	Flint fragment
121	West	Unstratified	1	Lithic	Flint fragment
122	SW	Unstratified	1	Lithic	Flint fragment
123	SW	Unstratified	1	Lithic	Flint fragment
124	West	Unstratified	1	Lithic	Flint fragment
125	West	Unstratified	1	Lithic	Flint fragment
126	NE	097	11	Lithic	Worked burnt flint

Find No.	Area	Context No.	No. of Pieces	Material	Description
127	NE	097	Many	Botanics	Nutshell fragments
128	East	100	3	Lithic	Flint fragment
129	West	Unstratified	Many crumbs	Ceramic	Sherds
130	West	Unstratified	Many crumbs	Ceramic	Sherds
131	West	Unstratified	8	Lithic	Flint fragment and cores
132	SW	Unstratified	1	Lithic	Worked flint
133	SW	Unstratified	1	Lithic	Flint fragment
134	South	009	1	Lithic	Flint fragment
135	SW	009	1	Lithic	Flint core
136	West	Unstratified	1	Lithic	Flint fragment
137	West	Unstratified	1	Lithic	Flint fragment
138	West	009	1	Lithic	Burnt flint core
139	SW	Unstratified	1	Lithic	Burnt flint
140	SW	Unstratified	1	Lithic	Flint fragment
141	SW	009	1	Lithic	Core
142	SW	009	1	Lithic	Burnt flint
143	West	009	1	Lithic	Core
144	West	009	1	Lithic	Flint fragment
145	West	Unstratified	2	Lithic	Possible worked flint core
146	Old trench	002	1	Ceramic	Base sherd
147	Old trench	045	1	Lithic	Flint fragment
150	Old trench	002	1	Lithic	Flint fragment
151	Old trench	Unstratified	1	Lithic	Flint fragment
152	Old trench	Unstratified	2	Ceramic	One rim and one sherd
153	Old trench	045	1	Lithic	Flint fragment
154	Old trench	045	1	Lithic	Flint fragment
155	Central	002	1	Lithic	Flint core
156	Old trench	Unstratified	1	Ceramic	Sherd
157	Old trench	045	1	Lithic	Flint fragment
158	Old trench	Unstratified	2	Ceramic	Sherd
159	Central	002	1	Ceramic	Rim sherd
160	West	017	1	Lithic	Flint fragment
161	West	017	1	Lithic	Flint fragment
162	Old trench	045	3	Lithic	Flint fragment
163	SW	109	1	Ceramic	Sherd
164	South	069	1	Lithic	Flint fragment
165	South	173	1	Ceramic	Daub
166	NW	107	1	Lithic	Flint fragment
167	NW	107	2	Ceramic	Abraded fragments
168	SW	078	1	Lithic	Flint?? fragment
169	SW	078	2 + crumbs	Ceramic	Sherd
170	SW	078	2 + crumbs	Ceramic	Sherd
171	SW	078	1	Ceramic	Sherd
172	NE	064	1 + crumbs	Ceramic	Sherd
173	NW	009	84 + crumbs	Ceramic	Prehistoric sherds
174	NW	073	1	Ceramic	Prehistoric sherds
175	NW	009	8 + crumbs	Ceramic	Prehistoric sherds
176	NW	009	5	Ceramic	Prehistoric sherds
177	NW	009	11	Ceramic	Prehistoric sherds
178	West	086	1	Ceramic	Sherd
179	West	089	2 + crumbs	Ceramic	Sherd
180	West	084	1	Lithic	Flint fragment

Find No.	Area	Context No.	No. of Pieces	Material	Description
181	West	129	3 + crumbs	Ceramic	Sherd
182	West	128	4	Ceramic	Sherd
183	West	084	1	Ceramic	Sherd
184	West	084	1	Ceramic	Sherd
185	West	086	1	Lithic	Flint blade
186	West	130	1	Ceramic	Sherd
187	West	130	3	Ceramic	Sherd
188	West	130	3 + crumbs	Ceramic	Sherd
189	West	083	2 + crumbs	Ceramic	Sherd
190	West	083	1	Stone	Worked stone flatsided
191	West	083	1+ f	Botanics	Nutshell fragments
192	West	085	10	Ceramic	Sherds, including one rim
193	West	129	1	Lithic	Flint fragment
194	West	084	1+ crumbs	Ceramic	Sherd
195	West	043	1 + crumbs	Ceramic	Sherd
196	West	130	3	Lithic	Flint fragments, blades
197	West	130	3 + crumbs	Ceramic	Sherd
198	West	086	1	Ceramic	Rim sherd
199	West	086	5	Ceramic	Sherds
200	West	130	2	Botanics	Nutshell fragments, hazelnut?
201	West	082	5	Botanics	Nutshell fragments
202	West	081	5	Ceramic	Sherds, including one rim
203	West	081	1	Lithic	Flint fragment
204	West	080	2	Lithic	Flint fragment
205	West	043	2 + crumbs	Ceramic	Sherds
206	West	043	1	Ceramic	Sherds
207	West	082	1	Ceramic	Rim sherd
208	South	Unstratified	1	Ceramic	Possibly decorated fragment
209	East	100	5	Lithic	Flint fragment
210	South	Unstratified	1	Lithic	Flint fragment
211	Old trench	004	1	Lithic	Pitchstone fragment
212	Old trench	Unstratified	1	Lithic	Flint fragment
213	Old trench	Unstratified	2	Metal	Slag
214	South	Unstratified	1	Ceramic	Sherds
215	West	Unstratified	1	Lithic	Flint fragment
216	West	002	1	Lithic	Flint fragment
217	East	100	3	Lithic	Flint fragment
218	South	045	2	Lithic	Flint fragment
219	South	004	1	Metal	Unidentified iron fragment
220	South	004	1	Lithic	Flint fragment
221	Old trench	144	1	Lithic	Flint core
222	NE	093	2	Lithic	Burnt flint
223	North	094	1	Ceramic	Sherd
224	North	094	Many	Ceramic	Sherd
225	North	094	1	Ceramic	Sherd (part of SF224?)
226	North	094	1	Lithic	Core?
227	East	095	2	Lithic	Flint fragment
228	East	151	3	Bone	Cremated possibly animal fragments
229	East	095	1	Lithic	Burnt flint
230	East	095	5+	Bone	Cremated bone fragments
231	West	Unstratified	1	Ceramic	Body sherds, possible base?
232	West	Unstratified	1	Lithic	Burnt flint
233	West	Unstratified	1	Lithic	Flint fragment
234	West	Unstratified	1	Lithic	Burnt flint

Find No.	Area	Context No.	No. of Pieces	Material	Description
235	West	Unstratified	1	Lithic	Flint fragment
236	West	Unstratified	1	Lithic	Flint fragment
237	West	Unstratified	1	Lithic	Flint fragment
238	West	Unstratified	1	Lithic	Flint fragment
239	West	Unstratified	1	Lithic	Flint fragment
240	West	Unstratified	1	Lithic	Flint fragment
241	West	Unstratified	1	Lithic	Flint fragment
242	West	Unstratified	1	Lithic	Burnt flint
243	West	Unstratified	1	Lithic	Flint fragment
244	West	Unstratified	3	Lithic	Quartz fragment
245	West	Unstratified	1	Lithic	Flint fragment
246	West	Unstratified	1	Lithic	Flint fragment
247	West	Unstratified	1	Lithic	Flint fragment
248	West	Unstratified	2	Lithic	Flint fragment
249	West	Unstratified	2	Lithic	Flint fragment
250	West	Unstratified	1	Lithic	Worked flint
251	West	Unstratified	1	Lithic	Flint fragment
252	West	Unstratified	1	Lithic	Flint fragment
253	West	Unstratified	1	Lithic	Flint fragment
254	West	Unstratified	1	Lithic	Flint fragment
255	West	Unstratified	2	Lithic	Flint fragment
256	West	Unstratified	1	Lithic	Flint fragment
257	West	Unstratified	2	Lithic	Flint fragment
258	West	Unstratified	1	Lithic	Flint fragment?
259	West	Unstratified	1	Lithic	Flint fragment
260	West	Unstratified	1	Lithic	Flint fragment
261	West	Unstratified	2	Lithic	Flint fragment
262	West	Unstratified	1	Lithic	Flint fragment
263	West	Unstratified	1	Ceramic	Clay pipe stem fragment
264	West	Unstratified	1	Lithic	Flint fragment
265	West	Unstratified	1	Lithic	Flint core
266	West	Unstratified	1	Lithic	Flint fragment
267	West	Unstratified	1	Lithic	Flint fragment
268	West	Unstratified	1	Ceramic	Sherd
269	West	Unstratified	1	Lithic	Flint fragment
270	West	Unstratified	1	Lithic	Flint core?
271	West	Unstratified	1	Lithic	Flint fragment
272	West	Unstratified	1	Ceramic	Sherd
273	West	Unstratified	1	Lithic	Flint fragment
274	West	Unstratified	1	Lithic	Burnt flint
275	East	162	1	Botanics	Nutshell fragment
276	East	162	1	Lithic	Flint fragment
277	East	162	1	Lithic	Flint fragment
278	East	162	1	Lithic	Flint fragment
279	East	162	1	Lithic	Flint fragment
280	East	162	1	Lithic	Flint core
281	East	162	6	Botanics	Nutshell fragment
282	East	162	Many	Bone	Cremated bone fragments
283	East	162	1	Lithic	Flint fragment
284	SW	Unstratified	3 + crumbs	Ceramic	Sherds
285	SW	Unstratified	2 + crumbs	Ceramic	Possible rim
286	SW	165	1	Lithic	Flint fragment
287	East	162	1	Lithic	Flint fragment
288	East	162	1	Lithic	Flint fragment

Find No.	Area	Context No.	No. of Pieces	Material	Description
289	East	162	1	Lithic	Flint fragment
290	East	162	1	Lithic	Flint fragment
291	East	162	1	Lithic	Flint fragment
292	East	162	1	Lithic	Flint fragment
293	East	162	1	Lithic	Flint fragment
294	East	162	2	Lithic	Flint fragment
295	East	162	1	Lithic	Flint fragment
296	East	162	1	Lithic	Flint fragment
297	East	162	1	Lithic	Flint fragment
298	East	162	1	Lithic	Flint fragment
299	SW	165	4	Lithic	Flint fragment
300	SW	167	1	Lithic	Flint fragment
301	East	162	1	Lithic	Flint fragment
302	East	162	1	Lithic	Flint fragment
303	East	162	1	Lithic	Flint fragment
304	East	162	1	Lithic	Flint fragment
305	East	162	1	Lithic	Flint fragment
306	East	162	1	Lithic	Flint fragment
307	East	162	1	Lithic	Flint fragment
308	East	162	1	Lithic	Flint fragment
309	SW	Unstratified	1	Lithic	Flint fragment
310	SW	Unstratified	1	Lithic	Flint fragment

## Appendix D: List of Samples

Sample No.	Area	Context No.	Size	Reason for Sampling				Application/Comments
				Pot	Bone	Lithics	Botanics	
1	West	011	2L	x	x	x	x	Flotation: fill of [010]
2	West	013	1S	x	x	x	x	Fill of stakehole [012]
3	West	018	1L	x	x	x	x	Flotation: charcoal spread
4	West	019	1L				x	Flotation: charcoal spread
5	West	017	1L		x		x	Flotation
6	West	015	2L		x		x	Flotation: charcoal spread
7	West	021	1S	x	x	x	x	Flotation: charcoal spread
8	Old Trench	025	2L	x	x	x	x	Fill of pit [024]
9	North	032	3L	x	x	x	x	Fill of pit [031]
10	North	033	1L				x	Possibly natural deposit of sandy/clay
11	Old Trench	030	3L	x	x	x	x	Fill of pit [029]
12	Old Trench	028	3L	x	x	x	x	Fill of posthole [027]
13	Old Trench	033	2L				x	Possibly natural deposit of sand/clay
14	Old Trench	004	2L				x	Slot 2
15	Old Trench	004	3L	x	x	x	x	Slot 1
16	Old Trench	036	7?				x	Sample of feature [035]
17	Old Trench	040	2L	x	x	x	x	Fill of linear feature [039]
18	Old Trench	038	3L		x			-
19	Old Trench	042	3L	x	x	x	x	Fill of pit [041]



Sample No.	Area	Context No.	Size	Reason for Sampling				Application/Comments
				Pot	Bone	Lithics	Botanics	
21	Old Trench	054	3L				x	Fill of pit [035]
22	Old Trench	055	3L				x	Deposit of compact dirt blobs in [035]
23	Old Trench	049	1L	x	x	x	x	Fill of pit [048]
24	Old Trench	056	2L				x	Fill of pit [035]
25	Old Trench	052	1L				x	Fill of pit [035]
26	Old Trench	058	1M				x	Fill of posthole [057]
27	Old Trench	051	1L	x	x	x	x	Fill of pit [050]
28	SE	097	3L		x	x	x	Fill of pit [098]
29	SE	097	5L		x	x		Fill of pit [098]
30	North	063	1L				x	Fluvial deposits
31	SW	102	1L	x	x	x	x	Charcoal rich deposit
32	Old Trench	045	2L	x	x	x	x	Fill of linear feature [044] slot A
33	Old Trench	045	1L				x	Fill of linear feature [044] slot C
34	Old Trench	045	1L				x	Fill of linear feature [044] slot B
35	Old Trench	103	1S				x	Fill of possible stakehole [104]
36	Old Trench	105	1S				x	Fill of possible stakehole [106]
37	SW	073	2L	x	x		x	Fill of pit flotation
38	SW	069	2L		x		x	-
39	NW	107	2L	x	x		x	Fill of pit [108]
40	SW	113	1L				x	Fill of pit/ph [071]
41	SW	114	1L				x	Fill of pit/ph [072]
42	SW	112	1L	x	x		x	Fill of pit [077]
43	SW	069	2L		x		x	-
44	SW	116	1L	x	x	x	x	Fill of pit [115]
45	SW	075	2L	x	x	x	x	Fill of feature [076]
46	SW	078	1L	x	x	x	x	Fill of feature [117]
47	SW	067	1L	x	x	x	x	Fill of feature [068]
48	NW	064	2L				x	Possible ceramic
49	SW	122	1L		x		x	Silt deposit in linear feature [070]
50	West	066	1S	x	x	x	x	Charcoal smear
51	West	065	2L	x	x	x	x	Fill of [119]
52	Old Trench	092	2L	x	x	x	x	-
53	West	089	1L	x			x	Taken from spread
54	West	128	1L	x	x		x	Flotation fill of [088]
55	West	129	1L	x	x		x	Flotation fill of [087]
56	West	085	1L	x	x		x	Flotation fill of [127]
57	West	084	2L	x	x	x	x	Flotation fill of [125]
58	West	083	1L	x			x	Upper fill of pit
59	West	132	1M				x	Lower fill of pit
60	West	086	1L	x	x	x	x	Upper fill of pit [126]
62	West	080	1L	x	x		x	Fill of pit [135]
63	West	081	1L	x	x		x	Fill of pit [136]
64	West	133	1M	x			x	Middle fill of pit
65	West	130	2L	x	x	x	x	Lower fill of pit [126]

Sample No.	Area	Context No.	Size	Reason for Sampling				Application/Comments
				Pot	Bone	Lithics	Botanics	
67	West	082	1L	x	x	x	x	Top fill of pit [140]
68	Old Trench	091	1L	x	x	x	x	Fill of pit [139]
69	East	100	2L	x	x	x	x	Fill of pit
70	West	082	1L	x			x	Upper fill of pit [140]
71	West	141	1M				x	Middle fill of pit [140]
72	West	142	1M				x	Lower fill of pit [140]
73	South	004	1L	x	x	x	x	Fill of linear cut [005] Slot 5
74	South	143	1L	x	x	x	x	Fill of linear feature
75	South	004	1L				x	Fill of linear cut [005] Slot 4
76	South	045	1L				x	Fill of linear cut [044] Slot E
77	South	004	1L				x	Fill of linear cut [005] Slot 3
78	South	045	1L	x	x		x	Fill of linear cut [044] Slot D
79	North	094	1L	x			x	Fill 094
80	North	093	1M	x	x	x	x	Fill of charcoal feature
81	East	148	1L	x	x	x	x	Fill of [149]
82	East	095	1L	x	x	x	x	Fill of [150]
83	East	151	1L	x	x	x	x	Fill of [152]
84	North	153	1M	x	x	x	x	Fill of charcoal feature
85	East	157	2L	x	x	x	x	Fill of pit
86	South	096	1L				x	Fill of possible pit
87	East	161	1L				x	VOID
88	SW	164	1L				x	VOID
89	SW	165	1L	x	x	x	x	Fill of Slot A
90	SW	165	1L	x	x	x	x	Fill of Slot B
91	East	162	3L	x	x	x	x	Charcoal fill of [163]
92	East	169	1M	x	x	x	x	Secondary fill of [163]

## Appendix E: List of Drawings

Drawing No.	Area	Sheet No.	Subject	Scale
1	West	1	NE facing section of pit (010)	1:10
2	West	1	West facing section of possible pit (016)	1:10
3	North	1	NW facing section of burn pit (031)	1:10
4	Old Trench	1	South facing section of linear feature (039)	1:10
5	Old Trench	1	NW facing section of pit (041)	1:10
6	Old Trench	1	Mid-ex plan of slot in W end of pit (035)	1:20
7	Old Trench	2	East facing section of pit (046)	1:10
8	Old Trench	2	West facing section of pit (048)	1:10
9	Old Trench	2	North facing section of posthole (057)	1:10
10	Old Trench	2	West facing section of pit (050)	1:10
11	NE	2	SW facing section of (098)	1:10
12	NE	2	Plan of feature (098)	1:20
13	NE	2	Post-ex plan of pit (098)	1:20
14	Old Trench	3	Post-ex plan of pits in SE of old trench	1:20
15	North	1	Post-ex plan of fluvial deposits (061-063) and slots	1:20
16	Old Trench	4	North facing section through linear feature (044) Slot C	1:10
17	Old Trench	4	South facing section through linear feature (044) Slot B	1:10
18	NW	4	Post-ex of pit (010)	1:20
19	Old Trench	4	South facing section of (044) Slot A and linear feature (110)	1:10
20	West	4	Post-ex plan of pit (016)	1:20
21	South	5	SSW facing section of pit (074)	1:10
22	South	5	South facing section of (076)	1:10
23	South	5	NNW facing section of (070)	1:10
24	NW	4	NE facing section of pit (108)	1:10

Drawing No.	Area	Sheet No.	Subject	Scale
25	NW	4	Post-ex plan of pit (108)	1:20
26	South	5	NW facing section of features (071) and (072)	1:10
27	South	4	South facing section of pit (115)	1:10
28	South	5	Slots A, B and C through curvilinear cut (068)	1:10
29	SW	6	NNW facing section of (070) in slot	1:10
30	SW	6	NW facing section through (117)	1:10
31	SW	7	Post-ex plan in SW area of curvilinear feature	1:20
32	SW	8	Post-ex plan in SW area of curvilinear feature	1:20
33	North	6	Post-ex plan of feature (031)	1:20
34	NE	6	West facing section through possible pit (118)	1:10
35	NW	6	NW facing section of pit (119)	1:10
36	North	6	Post-ex plan of pit (118)	1:20
37	Old Trench	6	East facing section of pit (123)	1:10
38	Old Trench	9	Plan of linear ditch (044)	1:50
39	Old Trench	10	Plan of linear ditch (044)	1:50
40	Old Trench	9	Post-ex plan of possible postholes and linear feature (039)	1:50
41	West	5	Plan showing position of small finds 173-177	1:20
42	NW	6	Post-ex plan of charcoal pit (119)	1:20
43	Old Trench	9	Plan of linear ditch (044)	1:50
44	Old Trench	10	Plan of linear ditch (005)	1:50
45	West	6	West facing section of (087)	1:10
47	West	5	West facing section of pit (127)	1:10
48	West	6	South facing section of (125)	1:10
49	West	5	North facing section of pit (126)	1:10
50	West	5	SSE facing section of pit (083)	1:10
52	West	5	South facing section of pits (135) and (136)	1:10
53	South	10	NW facing section of pit (137)	1:10
54	Old Trench	6	SE facing section of pit (139)	1:10
55	South	10	Post-ex of pit (137)	1:20
56	West	5	South facing section through pit (140)	1:10
57	West	11	Post-ex plan pits (126,127,87,88) and deposit (043)	1:20
58	West	12	Post-ex plan of pits (125,131,135,136,140)	1:20
59	East	5	NE facing section of pit (099)	1:10
60	East	13	Plan of pit (099)	1:20
61	West	13	North facing section of linear feature (005) Slot 3	1:10
62	West	13	Post-ex plan of (005) Slot 3	1:20
63	South	14	South facing section of linear feature (005) Slot 5	1:10
64	Old Trench	13	West facing section of linear feature (143)	1:10
65	South	14	North facing section of linear feature (044) Slot E	1:10
66	South	15	Post-ex plan of (005) Slot 4	1:20
67	South	14	South facing section of linear feature (044) Slot D	1:10
68	South	14	South facing section of linear feature (005) Slot 4	1:10
69	South	15	Post-ex plan of linear feature (044) Slot E	1:20
70	Old Trench	14	Post-ex plan of linear feature (143)	1:20
71	South	14	Post-ex plan of slots through linear feature (005)	1:20
72	South	15	Post-ex plan of (044) Slot D	1:20
73	North	14	West facing section of pit (147)	1:10
74	North	14	Post-ex plan of pit (147)	1:20
75	East	13	East facing section of pit (150)	1:10
76	East	15	West facing section of pit (149)	1:10
77	East	15	West facing section of pit (152)	1:10
78	South	14	West facing section of (096)	1:10
79	East	14	North facing section of (158)	1:10
80	East	15	West facing section of (161)	1:10
81	East	15	Post-ex plan of pit (158)	1:20
82	East	16	North facing section of pit (163)	1:10

Drawing No.	Area	Sheet No.	Subject	Scale
83	SW	16	South facing section of slot A through pit (166)	1:10
84	SW	16	North facing section of slot A through pit (166)	1:10
85	East	17	Post-ex of group of pits (149,150,152 and 163)	1:20
86	SW	17	Post-ex planof (166) including Slots A' and B'	1:20

## Appendix F: List of Photographs

### Digital File 001 - Folder 1

Frame	Area	Context No.	Subject	Taken from
1	-	-	ID shot	-
2	-	-	General site shot- before work	N
3	-	-	General site shot- before work	N
4	-	-	General site shot- before work	N
5	-	-	Access road shot	-
6	-	-	Access road shot	-
7	-	-	Access road shot	-
8	-	-	Access road shot	-
9	-	-	Access road shot	-
10	-	-	Access road shot	-
11	-	-	Access road shot	-
12	-	-	Access road shot	-
13	-	-	Access road shot	-
14	-	-	Access road shot	-
15	W	-	Working shot in west area of site	NW
16	W	-	Working shot in west area of site	NW
17	W	-	Working shot in west area of site	N
18	W	007/008	Pre-ex of possible pit	NE
19	W	007/008	NE facing section of possible pit	NE
20	W	-	Post-ex of slot through drain	N
21	Old trench	-	SE of old trench after cleaning	N
22	Old trench	-	SE of old trench after cleaning	S
23	W	010/011	Pre-ex view of pit	NE
24	W	-	Pre-ex of possible linear feature- Modern	E
25	W	010/011	NE facing section of pit	NE
26	W	-	Post-ex of linear feature-Modern	W
27	W	012/013	Pre-ex of possible stake hole	N
28	W	014/015	Pre-ex of charcoal spread	E
29	W	016/017	Pre-ex photo of possible pit	E
30	W	012/013	N facing section of stakehole/posthole	N
31	W	18	Pre-ex view of charcoal patch	S
32	W	012/013	Post-ex of stakehole (modern?)	N
33	W	19	Pre-ex of charcoal spread	W
34	-	-	Car accident in workspace carpark	-
35	-	-	Car accident in workspace carpark	-
36	-	-	Car accident in workspace carpark	-
37	-	-	Car accident in workspace carpark	-
38	W	020/021	Pre-ex of possible pit	N
39	W	022/023	Pre-ex of test pit	S
40	W	-	Pre-ex of possible pit (voided)	N
41	W	019	W facing section of charcoal spread	W
42	W	019	Post-ex of spread	W
43	W	021	Post-ex of charcoal spread	N
44	W	-	Possible spread 1m N of [022]	N
45	W	015	E facing section of charcoal spread	E
46	W	022/023	Partially excavated test pit	S

Frame	Area	Context No.	Subject	Taken from
47	W	016/017	W facing section of possible pit	W
48	Old trench	-	Working shot of old trench being clean	N
49	Old trench	-	Working shot of old trench being clean	NW
50	Old trench	-	Working shot of old trench being clean	NW
51	Old trench	024/025	Pre-ex of pit feature	S
52	Old trench	024/025	Mid-ex of pit feature	E
53	Old trench	024/025	E facing section of pit	E
54	Old trench	024/025	Post-ex of pit feature	W
55	Old trench		Pre-ex shot of (103) in previous excavation	NE
56	Old trench	027/028	Pre-ex shot of pit	S
57	Old trench	029/030	Pre-ex of pit feature	S
58	N	031/032	Pre-ex of possible pit	W
59	Old trench	033	Pre-ex shot of possible feature	N
60	N	031/032	NW facing section of pit	NW
61	N	033	NW facing section of pit	NW
62	Old trench	029/030	S facing section of pit	S
63	Old trench	027/028	E facing section of pit	E
64	N	031/032	Post-ex of pit	NW
65	Old trench	029/030	Post-ex of pit feature	S
66	Old trench	027/028	Post-ex of pit	S
67	Old trench	004/005	Pre-ex of feature	S
68	Old trench	004/005	Pre-ex of feature	S
69	Old trench	004/005	Pre-ex of feature	N
70	Old trench	004/005	Pre-ex of feature	N
71	Old trench	033	Post-ex of feature	W
72	Old trench	004/005	Slot 2 through linear feature	W
73	Old trench	004/005	Slot 2 through linear feature	N
74	Old trench	004/005	Section through Slot 2 of linear feature	N
75	Old trench	004/005	S facing section through Slot 1 of linear feature	SSE
76	Old trench	004/005	N facing section through Slot 1 of linear feature	N
77	Old trench	004/005	Section through Slot 1 of linear feature	W
78	Old trench	035/036	Pre-ex of pit feature	E
79	Old trench	035/036	Pre-ex of pit feature	N
80	Old trench	039/040	Pre-ex of linear feature	E
81	Old trench	-	Working shot along alignment of pits and features	N
82	Old trench	039/040	S facing section of linear feature	S
83	Old trench	041/042	Pre-ex of pit feature	E
84	Old trench	041/042	NW facing section of pit	NW
85	Old trench	041/042	NW facing section of pit	NW
86	Old trench	035/036	Mid-ex [035] showing possible feature	E
87	Old trench	035/036	Mid-ex [035] showing possible feature	N
88	Old trench	041/042	Post-ex of pit	N
89	Old trench	041/046/048/050	Post-ex of [041] with [046],[048],[050] in background	N
90	Old trench	046/047	Pre-ex of pit	E
91	Old trench	046/047	E facing section of pit	E
92	Old trench	046/047	Post-ex of pit	E
93	Old trench	038	Post-ex shot of spread with slots	N
94	Old trench	038	Post-ex shot of spread with slots	S
95	Old trench	048/049	Pre-ex of pit	E
96	Old trench	048/049	W facing section of pit	W
97	Old trench	048/049	Post-ex of pit	E
98	Old trench	035/036	Post-ex of pit	E
99	Old trench	035/036	Post-ex of pit	E
100	Old trench	051/052	Pre-ex of pit	W
101	Old trench	051/052	W facing section of pit	W
102	-	-	Shots of driveway	-

Frame	Area	Context No.	Subject	Taken from
103	-	-	Shots of driveway	-
104	Old trench	057/058	N facing section	N
105	Old trench	060/061	Pre-ex of possible post hole	SW
106	-	058	Post-ex of pit	N
107	-	061/063	Northern area deposits	N
108	-	061/063	Northern area deposits	N
109	-	061/063	Slot through 061/063	NE
110	-	061/063	NW facing section through slot	NW
111	-	061/063	Slot through 061/063	NE
112	-	061/063	E Slot through 061/063	NE
113	-	061/063	NW facing section	NW
114	NE	097/098	Half section shot of feature	SW
115	NE	097/098	Half section shot of feature	SW
116	NE	097/098	SW facing section through feature	SW
117	NE	097/098	SW facing section through feature	SW
118	E	Rig & furrows	General shot of rig & furrows	SE
119	Old trench	050/051	Post-ex of post hole	W
120	S	101	Curvilinear feature pre-ex	SW
121	S	101	Curvilinear feature pre-ex	SW

## Digital File 002 - Folder 2

Frame	Area	Context No.	Subject	Taken from
1	-	-	ID shot	-
2	SW	-	General site shot of curvilinear feature	S
3	SW	-	General site shot of curvilinear feature	S
4	SW	-	General site shot of curvilinear feature	S
5	SW	102	Charcoal rich deposit pre-ex	W
6	SW	-	General site shot of curvilinear feature	E
7	SW	-	General site shot of curvilinear feature	E
8	SW	-	General site shot of curvilinear feature	SE
9	SW	-	General site shot of curvilinear feature	SE
10	SW	102	Charcoal rich deposit (slot)	SW
11	Old trench	044/045	Slot C through ditch [044] (S facing section)	S
12	Old trench	044/045	Slot C through ditch [044] (N facing section)	N
13	Old trench	044/045	Slot C through ditch [044] post-ex	N
14	Old trench	044/045	Slot B through ditch [044] S facing section	S
15	Old trench	044/045	Slot B through ditch [044] possible stakeholes	W
16	NW	108	Pit cut pre-ex	NW
17	NW	010	Post-ex of pit	NW
18	SW	067	Pre-ex of feature (067) curvilinear	W
19	SW	067/069/071	Pre-ex of feature (067, 069,071) curvilinear	W
20	SW	067/069/071	Pre-ex of feature (067, 069,071) curvilinear	W
21	SW	069/071	Gap between (069 & 071)	W
22	SW	069	Pre-ex (069)	W
23	SW	071	Pre-ex (071)	W
24	SW	071	Pre-ex (071)	S
25	Old trench	044	Post-ex of linear feature	S
26	Old trench	044	Post-ex of linear feature	W
27	W	016/017	Post-ex of pit feature	N
28	NW	107/108	NE facing section of pit	NE
29	S	073/074	SW facing section of pit	SW
30	S	077	Pre-ex of possible hearth	SE
31	S	075/076	S facing section	S
32	S	077/112	SE facing section	SE
33	SW	071/072	Two possible post holes at curvilinear feature	W



Frame	Area	Context No.	Subject	Taken from
34	NW	107/108	Pit 108 post-ex	NE
35	SW	071/072	W facing section of pits	W
36	SW	067/068	Slot A through linear cut	E
37	SW	067/068	Slot B through linear cut	W
38	SW	115/116	South facing section of pit	S
39	SW	069/070	General shot of ditch 070	SW
40	SW	069/070	SW facing section	SW
41	SW	077/112	Post-ex shot of hearth feature	SE
42	SW	067/068	Slot A, B & C through curvilinear cut showing truncation by field drain	W
43	SW	071/072	Post-ex features 071 and 072	W
44	SW	071/072	Post-ex features 071 and 072	N
45	SW	-	Rubble drain in SW area	E
46	Old trench	-	Linear ditch features	S
47	Old trench	044/045/110/111	Linear ditch features	S
48	Old trench	044/045/110/111	Linear ditch features	N
49	Old trench	044/045/110/111	Linear ditch features	N
50	SW	078/117	Possible pit or posthole	E
51	SW	069/070	General shots post-ex showing slots	S
52	SW	069/070	General shots post-ex showing slots	S
53	SW	078/117	NW facing section of [117]	NW
54	SW	115/116	Post-ex of posthole	S
55	SW	069/070	Overcut slot showing possible leaching into subsoil	NW
56	SW	069/070	Overcut slot showing possible leaching into subsoil	NW
57	SW	075/076	Post-ex of linear feature	W
58	SW	117	Post-ex of [117]	NW
59	NW	064	Pre-ex shot	W
60	NW	064	Pre-ex shot	W
61	SW	068	Curvilinear cut post-ex	W
62	West	119/065	Pre-ex shot of charcoal pit	NW
63	West	120/121	Pre-ex shot of possible posthole (voided)	NW
64	West	120/121	Section of possible posthole (voided)	-
65	SW	070/122	Silt deposit in linear feature [070]	NW
66	West	066	E facing section of overcut charcoal smear	E
67	NW	-	SF173-177 pre-ex	N
68	NW	-	SF173-177 during excavation	N
69	SW	070	Post-ex of curvilinear ditch	NW
70	North	064	Post-ex shot of feature	E
71	North	064	Post-ex shot of feature	SE
72	North	065/119	NW facing section of [119]	NW
73	Old trench	092	Pre-ex of feature	S
74	Old trench	092	East facing section of possible pit	E
75	Old trench	089	Pre-ex photo of possible pit	E
76	Old trench	089	Pre-ex photo of possible pit	W
77	NW	065/119	Post-ex of charcoal pit	NW
78	Old trench	092/123	Post-ex of charcoal filled pit	W
79	West	084/125	Pre-ex of pit feature [125]	W
80	West	086/126	Pre-ex of pit	W
81	West	127	Pre-ex of pit	W
82	West	087/088	Pre-ex of pits	S
83	West	089	Post-ex showing slot through spread	W
84	West	089	Post-ex showing slot through spread	W
85	West	127	W facing section of pit	W
86	West	083	Pre-ex photo of possible pit	E
87	West	084	Mid-ex of pit [125] showing section	S

Frame	Area	Context No.	Subject	Taken from
88	West	086/126/130	NNE facing section of pit	NNE
89	West	083	Mid ex shot of pit	S
90	West	083	South facing section of pit	S
91	West	079	Pre-ex of feature 079	S
92	West	087/088	Post-ex pits	NW
93	West	126/127	Post-ex of pits 127 & 126 half sectioned	SW
94	West	084/125	Post-ex of pit [125]	W
95	West	135/136	Pre-ex of pits	S
96	West	090	Pre-ex of feature	SE
97	West	079/134	E facing section of [134] (voided)	E
98	West	083	Post-ex of pit	NE
99	Old trench	091	Pre-ex of possible pit	S
100	Old trench	091	Pre-ex of possible pit	E
101	West	126	Post-ex of pit	N
102	West	-	Possible modern feature, at SF017	-
103	West	082	Pre-ex of possible pit	E
104	West	135/136	SW facing section pits	SW
105	South	137/138	Pre-ex of pit	S
106	Old trench	091/139	SE section of pit feature	SE
107	West	082	S facing section	S
108	South	137/138	NW facing section	NW
109	West	135/136	Post-ex of pits 127 & 126 half sectioned	S
110	South	137	Post-ex of pit	NW
111	East	100/099	Slot through pit	SW
112	Old trench	091/139	Post-ex of pit feature	S
113	Old trench	091/139	Post-ex of pit feature	E
114	West	140	Post-ex of feature	N
115	West	140 and others	General shot of features	N
116	East	100/099	NE facing section of pit	NE
117	East	100/099	Post-ex of pit	N
118	East	100/099	Post-ex of pit	S
119	Old trench	143/144	Pre-ex of shot through linear feature	S
120	South	004/005	Slot 3 post-ex	S
121	South	004/005	South facing section of ditch Slot 3	S
122	South	004/005	Slot 5 post-ex	S
123	South	004/005	South facing section of ditch Slot 5	S
124	South	004/005	Slot 4 post-ex	N
125	South	004/005	South facing section of ditch Slot 4	N
126	Old trench	143/144	West facing section	W
127	General	-	Working shot	NE
128	Old trench	143/144	Post-ex shot of linear feature	E
129	South	044/045	Slot D shot	SW
130	South	044/045	S facing section through Slot D	S
131	South	044/045	Plan of Slot E	W
132	South	044/045	N facing section through Slot E	N
133	North	094/147	W facing section of pit	W
134	North	094/147	Post-ex of pit	W
135	North	093	Pre-ex of charcoal feature	NE
136	East	095	Pre-ex of feature (095) and others	W
137	East	095	Pre-ex of feature (095) and others	N
138	East	095	Pre-ex of feature (095) and others	E
139	East	095	Pre-ex of feature (095) and others	S
140	North	093	NE facing section of feature	NE
141	East	148	Pre-ex of pit	W
142	East	095	Pre-ex of pit	W

Frame	Area	Context No.	Subject	Taken from
143	North	094	Plan view with small finds (pre-ex)	W
144	East	148	West facing section	W
145	East	151	Pre-ex of pit	W
146	North	093	Post-ex of feature	SW
147	North	093	Post-ex of feature	SW
148	E	095	E facing section	E
149	N	147	Post-ex of pit [147]	W
150	N	153	SW facing section of slot	SW
151	N	153	Post-ex of slot through feature	SW
152	E	151/152	W facing section of [152]	W
153	E	154/155	W facing section of [155]	W
154	North	156	Pre-ex of possible charcoal feature	S
155	E	157/158	Pre-ex of pit	S
156	S	096	W facing section	W
157	S	096	Plan of possible pit	W
158	E	095/150	Post-ex of pit	N
159	E	159	Pre-ex of possible curved pit	NW
160	E	148	Post-ex of pit	W
161	E	151	Post-ex of pit	W
162	S	096	Post-ex of feature	W
163	E	157/158	N facing section	N
164	E	161	Pre-ex of possible pit	W
165	E	162/163	Pre-ex of possible pit	E
166	E	162/163	Pre-ex of possible pit	E
167	E	161	W facing section	W
168	E	157/158	Post-ex of pit	N
169	E	161	Post-ex of feature	W
170	SW	164	Pre-ex of feature	W
171	SW	164	W facing section of slot	W
172	SW	001/009	West facing section on SW area of excavation limit	W
173	E	162/163	N facing section of slot/pit	N
174	E	162/163	N facing section of slot/pit	N
175	E	162/163	Mid-ex shot of pit	NW
176	E	162/163	Mid-ex shot of pit	SE
177	SW	165/166/167/168	S facing section of slot A through possible feature	S
178	SW	165/166	N facing section of slot A through possible feature	N
179	N	001/006	South facing section on N area of excavation limit	S
180	NW	001/003	East facing section on NW area of excavation limit	E
181	NE	001/003	West facing section on NE area of excavation limit	W
182	SE	001/003	West facing section on SE area of excavation limit	W
183	S	001/003	North facing section on S side of excavation	N
184	SW	001/peat	East facing section on SW side of excavation	E
185	SW	165/166/167	S facing section of slot B through possible feature	S
186	SW	165/166/167	N facing section of slot B through possible feature	N
187	E	163	Post-ex of pit feature	E
188	E	163	Post-ex of pit feature	W
189	E	163	Post-ex of pit feature	E
190	E	163	Post-ex of pit feature	W

### Digital File 003 - Folder 3

Frame	Area	Context No.	Subject	Taken from
1	-	-	ID shot	-
2	Old trench	035	Mid-ex shot	E
3	Old trench	035	Mid-ex shot	E
4	East	Rig & furrows	General shot of rig and furrows	SE

Frame	Area	Context No.	Subject	Taken from
5	East	Rig & furrows	General shot of rig and furrows	SE
6	SW	101	Curvilinear feature pre-ex	SW
7	SW	101	Curvilinear feature pre-ex	SW
8	SW	-	General shot of curvilinear feature	S
9	SW	-	Close up of curvilinear feature	S
10	SW	-	General shot of SW area	S
11	SW	-	General shot of curvilinear feature	E
12	SW	-	General shot of curvilinear feature	E
13	SW	-	General shot of curvilinear feature	SE
14	SW	-	General shot of curvilinear feature	SE
15	SW	069/075	Curvilinear feature 069/075	SE
16	SW	071	Pre-ex of feature	W
17	SW	071	Pre-ex of feature	W
18	SW	067/069/071	Gap between (067,069,071)	S
19	SW	067/069/071	Gap between (067,069,071)	S
20	SW	067/069/071	Gap between (067,069,071)	W
21	Old trench	044/045/110/111	Linear ditch features	S
22	Old trench	044/045/110/111	Linear ditch features	S
23	Old trench	044/045/110/111	Linear ditch features	N
24	Old trench	044/045/110/111	Linear ditch features	N
25	SW	078	Possible pit or posthole	E
26	W	-	Blair excavating pot	E
27	W	-	Blair excavating pot	S
28	W	-	Blair excavating pot	W
29	-	-	Rainbow over Barassie	S
30	-	-	Rainbow over Barassie	S
31	-	-	Rainbow over Barassie	S
32	South	044/045	Plan, Slot E	N
33	South	044/045	North facing section Slot E	N
34	N	094	Pre-ex of feature	N
35	N	145/146	Pre-ex of feature (voided)	S
36	N	094/147	West facing section of pit	W
37	N	094/147	Plan of pit	W
38	East	095	Pre-ex of 095 and others	W
39	East	095	Pre-ex of 095 and others	N
40	East	095	Pre-ex of 095 and others	E
41	East	095	Pre-ex of 095 and others	S
42	SW	-	Post-ex of curvilinear feature	E
43	SW	-	Post-ex of curvilinear feature	E
44	SW	-	Post-ex of curvilinear feature	S
45	SW	-	Post-ex of curvilinear feature (detail)	S
46	SW	-	Post-ex of curvilinear feature	W
47	SW	-	Post-ex of curvilinear feature (detail)	W
48	SW	-	Post-ex of curvilinear feature	N
49	SW	-	Post-ex of curvilinear feature	N
50	SW	-	Post-ex of curvilinear feature (detail)	N
51	SW	-	Post-ex of curvilinear feature	NE
52	W	-	Post-ex of postholes (081, 082...)	E
53	W	-	Post-ex of postholes (081, 082...)	NE
54	W	-	Post-ex of postholes (081, 082...)	N
55	W	-	Post-ex of postholes (081, 082...) detail	N
56	W	-	Post-ex of postholes (081, 082...)	NE
57	W	-	Post-ex of postholes (087,088...)	E
58	W	-	Post-ex of postholes (087,088...)	N
59	W	-	Post-ex of postholes (087,088...)	N

Frame	Area	Context No.	Subject	Taken from
60	W	-	Post-ex of postholes (087,088) detail	E
61	W	-	Post-ex of postholes (086,085) detail	E
62	East	-	Post-ex of feature (095, others)	N
63	East	-	Post-ex of feature (095, others) detail	N
64	East	-	Post-ex of feature (095, others)	E
65	East	-	Post-ex of feature (095, others) detail	E
66	East	-	Post-ex of feature (095, others)	S
67	East	-	Post-ex of feature (095, others)	SE
68	Old trench	-	Post-ex of features on SE corner	W
69	Old trench	-	Post-ex of features on SE corner	N
70	SW	-	Investigated area for AP's	S
71	SW	-	Investigated area for AP's	S
72	SW	-	Investigated area for AP's (detail)	S
73	SW	-	Investigated area for AP's	N
74	SW	-	Investigated area for AP's	N
75	SW	-	Curvilinear feature post-ex	SW
76	SW	-	Curvilinear feature post-ex detail	SW
77	SW	-	Curvilinear feature post-ex	SW
78	SW	-	Curvilinear feature post-ex	SW
79	SW	-	Curvilinear feature post-ex	N
80	SW	-	Curvilinear feature post-ex	N
81	SW	-	Curvilinear feature post-ex	W

## Black and White

### Film 001

Frame	Area	Context No.	Subject	Taken from
1	-	-	ID shoot	-
2	W	012/013	Pre-ex of possible stakehole	N
3	W	014/015	Pre-ex of possible pit	E
4	W	016/017	Pre-ex of possible pit	E
5	W	018	Pre-ex view of charcoal patch	S
6	W	019	Pre-ex of charcoal spread	W
7	W	020/021	Pre-ex of possible pit	N
8	W	021	Post-ex of charcoal spread	N
9	W	016/017	West facing section of possible pit	W
10	Old trench	-	Working shot of old trench been cleaned	N
11	Old trench	-	Working shot of old trench been cleaned	NW
12	Old trench	024/025	Pre-ex of pit feature	S
13	Old trench	024/025	Mid-ex of possible pit	E
14	Old trench	024/025	Post-ex of pit	W
15	Old trench	027/028	Pre-ex of pit (original number 137)	S
16	Old trench	029/030	Pre-ex of pit feature	S
17	N	031/032	Pre-ex of possible pit	W
18	N	031/032	NW facing section of pit	NW
19	Old trench	029/030	S facing section of pit	S
20	Old trench	027/028	E facing section of pit	E
21	N	031/032	Post-ex of pit	NW
22	Old trench	029/030	Post-ex of pit feature	S
23	Old trench	027/028	Post-ex of pit	S
24	Old trench	004/005	S facing section of slot1 through linear feature	SSE
25	Old trench	004/005	N facing section of slot1 through linear feature	N
26	Old trench	039/040	S facing section of linear feature	SW
27	Old trench	041/042	NW facing section of pit	NW
28	Old trench	041/042	Post-ex of pit	N

Frame	Area	Context No.	Subject	Taken from
29	Old trench	046/047	E facing section of pit	E
30	Old trench	046/047	Post-ex of pit	E
31	Old trench	048/049	W facing section of pit	W
32	Old trench	050/051	W facing section of pit	W
33	Old trench	057/058	N facing section	N
34	Old trench	060/061	Pre-ex of possible posthole	SW

## Film 002

Frame	Area	Context No.	Subject	Taken from
1	-	-	ID shoot	-
2	NE end	097/098	Shot of feature mid excavation	SW
3	NE end	097/098	Shot of feature mid excavation	SW
4	NE end	097/098	SW facing section through feature	SW
5	NE end	097/098	SW facing section through feature	SW
6	E	Rig & furrows	General shot of rig and furrows	SE
7	S	101	Curvilinear feature pre-ex	SW
8	S	101	Curvilinear feature pre-ex	SW
9	SW	-	General shot of SW area shows curvilinear feature	S
10	SW	-	General shot of SW area's east side	S
11	SW	102	Charcoal rich deposit pre-ex	W
12	SW	-	General shot of curvilinear feature	E
13	SW	-	General shot of curvilinear feature	E
14	SW	-	General shot of curvilinear feature	SE
15	SW	102	Charcoal rich deposit (slot)	SW
16	Old trench	044/045	Slot C through ditch [044] (S facing section)	S
17	Old trench	044/045	Slot C through ditch [044] (N facing section)	N
18	Old trench	044/045	Slot C through ditch [044] post-ex	N
19	Old trench	044/045	Slot B through ditch [044] S facing section	S
20	Old trench	044/045	Slot B through ditch [044] possible stakeholes	W
21	NW	108	Pit cut pre-ex	NW
22	NW	010	Post-ex of pit	NW
23	S	067	Pre-ex of feature (067) curvilinear	W
24	S	067/069/071	Pre-ex of feature (067, 069,071) curvilinear	W
25	S	067/069/071	Pre-ex of feature (067, 069,071) curvilinear	W
26	S	069/071	Gap between (069 & 071)	W
27	S	069	Pre-ex (069)	W
28	S	071	Pre-ex (071)	W
29	S	071	Pre-ex (071)	S
30	Old trench	044	Post-ex of linear feature	S
31	Old trench	044	Post-ex of linear feature	W

## Film 003

Frame	Area	Context No.	Subject	Taken from
1	-	-	ID shoot	-
2	W	016/017	Post-ex of pit feature	N
3	NW	107/108	NE facing section of pit	NE
4	S	073/074	SW facing section of pit	SW
5	S	077	Pre-ex of possible hearth	SE
6	S	075/076	South facing section	S
7	S	077/112	SE facing section	SE
8	NW	107/108	Pit 108 post-ex	NE
9	SW	071/072	W facing section of pits	W
10	SW	067/068	Slot A through linear cut	E
11	SW	067/068	Slot B through linear cut	W



Frame	Area	Context No.	Subject	Taken from
12	SW	077/112	Post-ex shot of hearth feature	SE
13	SW	067/068	Slot A, B & C through curvilinear cut showing truncation by field drain	W
14	SW	071/072	Post-ex features 071 and 072	W
15	SW	071/072	Post-ex features 071 and 072	N
16	SW	-	Rubble drain in SW area	E
17	Old trench	-	Linear ditch features	S
18	Old trench	044/045/110/111	Linear ditch features	S
19	Old trench	044/045/110/111	Linear ditch features	N
20	Old trench	044/045/110/111	Linear ditch features	N
21	SW	078/117	Possible pit or posthole	E
22	SW	069/070	General shots post-ex showing slots	S
23	SW	069/070	General shots post-ex showing slots	S
24	SW	078/117	NW facing section of [117]	NW
25	SW	115/116	Post-ex of posthole	S
26	SW	069/070	Overcut slot showing possible leaching into subsoil	NW
27	SW	069/070	Overcut slot showing possible leaching into subsoil	NW
28	SW	075/076	Post-ex of linear feature	W
29	SW	117	Post-ex of [117]	NW
30	NW	064	Pre-ex shot	W
31	NW	064	Pre-ex shot	W
32	NW	119/065	Pre-ex shot of charcoal pit	NW
33	NW	120/121	Pre-ex shot of possible posthole (voided)	NW
34	NW	064	W facing section of pits	W
35	SW	070/122	Silt deposit in linear feature [070]	NW
36	West	066	E facing section of overcut charcoal smear	E
37	NW		Pre-ex of small finds 173 to 177	N

#### Film 004

Frame	Area	Context No.	Subject	Taken from
1	-	-	ID shoot	-
2	SW	070	Post-ex curvilinear feature	NW
3	N	065/119	NW section of charcoal pit	NW
4	Old trench	092	Pre-ex of feature	S
5	N	064	Post-ex shot of feature	SW
6	N	064	Post-ex shot of feature	W
7	Old trench	092	E facing section of possible pit	E
8	Old trench	089	Pre-ex photo of possible pit	W
9	NW	065/119	Post-ex of charcoal pit	NW
10	Old trench	092/123	Post-ex of charcoal filled pit	W
11	West	084/125	Pre-ex of pit feature [125]	W
12	West	086/126	Pre-ex of pit	W
13	West	127	Pre-ex of pit	W
14	West	087/088	Pre-ex of pits	S
15	West	127	W facing section of pit	W
16	West	083	Pre-ex photo of possible pit	E
17	West	084	Mid-ex of pit [125] showing section	S
18	West	086/126/130	NNE facing section of pit	NNE
19	West	083	Mid ex shot of pit	S
20	West	079	Pre-ex of feature 079	S
21	West	087/088	Post-ex pits	NW
22	West	126/127	Post-ex of pits 127 & 126 half sectioned	SW
23	West	084/125	Post-ex of pit [125]	W
24	West	135/136	Pre-ex of pits	S
25	West	090	Pre-ex of feature	SE

Frame	Area	Context No.	Subject	Taken from
26	West	079/134	E facing section of [134] (voided)	E
27	West	126	Post-ex of pit	N
28	West	135/136	SW facing section of pits	SW
29	S	137/138	Pre-ex of pit	S
30	S	137/138	Pre-ex of pit	S
31	Old trench	091/139	SE section of pit feature	SE
32	W	082	S facing section	S
33	S	137/138	NW facing section	NW

#### Film 005

Frame	Area	Context No.	Subject	Taken from
1	S	137	Post-ex of pit [137]	NW
2	-	-	ID shoot	-
3	E	100/099	Slot through pit	SW
4	Old trench	091/139	Post-ex of pit feature	E
5	E	-	Cows	W
6	E	-	Cows	W
7	E	100/099	NE facing section of pit	NE
8	E	100/099	Post-ex of pit	N
9	E	100/099	Post-ex of pit	N
10	E	100/099	Post-ex of pit	S
11	Old trench	143/144	Pre-ex of shot through linear feature	S
12	S	004/005	Slot 5 through linear cut	S
13	Old trench	143/144	W facing section of linear feature	W
14	Old trench	143/144	Post-ex shot of linear feature	E
15	S	044/045	Slot D shot	SW
16	S	044/045	S facing section through Slot D	S
17	S	044/045	Plan of Slot E	W
18	S	044/045	N facing section through Slot E	N
19	N	094	Pre-ex shot of feature	N
20	N	145/146	Pre-ex of pit feature	S
21	N	094/147	W facing section of pit	W
22	N	094/147	Post-ex of pit	W
23	N	093	Pre-ex of charcoal feature	NE
24	E	095	Pre-ex of feature (095) and others	W
25	E	095	Pre-ex of feature (095) and others	N
26	E	095	Pre-ex of feature (095) and others	E
27	E	095	Pre-ex of feature (095) and others	S

#### Film 006

Frame	Area	Context No.	Subject	Taken from
1	-	-	ID shoot	-
2	N	093	SW facing section of feature	SW
3	E	095	Pre-ex of [149]	W
4	E	095	Pre-ex of [150]	W
5	E	095	Pre-ex of [150]	W
6	N	094	Plan view with small finds pre-ex	W
7	E	148	W facing section [149]	W
8	E	151	Pre-ex shot of feature	W
9	N	093	Post-ex of feature	SW
10	E	095	E facing section	E
11	N	147	Post-ex of pit [147]	W
12	N	153	SW facing section of slot	SW
13	E	151/152	W facing section of [152]	W

Frame	Area	Context No.	Subject	Taken from
14	E	154/155	W facing section of [155]	W
15	E	157/158	Pre-ex of pit	S
16	S	096	W facing section	W
17	S	096	Plan of possible pit	W
18	E	095/150	Post-ex of pit	N
19	E	159	Pre-ex of possible curved pit	NW
20	E	148	Post-ex of pit	W
21	E	151	Post-ex of pit	W
22	S	096	Post-ex of feature	W
23	E	157/158	N facing section	N
24	E	162/163	Pre-ex of possible pit	E
25	E	161	W facing section	W
26	E	157/158	Post-ex of pit	N
27	E	161	Post-ex of feature	W
28	SW	164	Pre-ex of feature	W
29	SW	164	W facing section of slot	W
30	E	162/163	N facing section of slot/pit	N
31	SW	165/166/167/168	S facing section of slot A through possible feature	S
32	SW	165/166	N facing section of slot A through possible feature	N
33	SW	165/166/167	S facing section of slot B through possible feature	S
34	SW	165/166/167	N facing section of slot B through possible feature	N
35	E	165	Post-ex of pit feature	W

## Appendix G: Discovery And Excavation Scotland Entry

LOCAL AUTHORITY:	South Ayrshire
PROJECT TITLE/SITE NAME:	Barassie, Troon Excavation
PROJECT CODE:	3330
PARISH:	Dundonald
NAME OF CONTRIBUTOR(S):	Iraia Arabaolaza
NAME OF ORGANISATION:	Guard Archaeology
TYPE(S) OF PROJECT:	Excavation
NMRS NO(S):	NS33SW 137
SITE/MONUMENT TYPE(S):	
SIGNIFICANT FINDS:	Three possible roundhouses, undated field boundaries and pits and post-medieval agricultural improvements
NGR (2 letters, 6 figures)	NS 338 325
START DATE (this season)	30 January 2012
END DATE (this season)	21 March 2012
PREVIOUS WORK (incl. DES ref.)	Archaeological evaluation (2008, pp.167)
MAIN (NARRATIVE) DESCRIPTION: (May include information from other fields)	GUARD Archaeology Limited were commissioned by Stewart Milne Homes and Lynch Homes to undertake the strip, map and sample excavation of archaeological remains first uncovered during the trial trench evaluation and sample excavation at Barassie, Troon in 2008 (Becket 2008). This work was undertaken from 30 January to 21 March 2012, and revealed some 19 discrete pits, 16 postholes, 2 stakeholes, a ditch-defined roundhouse, one post-ring roundhouse, a possible post-ring roundhouse and two linear ditches as well as many cultivation furrows and linear drains known to exist from previous evaluation of the site. Prehistoric ceramic and lithics found in some of the pits have been provisionally dated between the late-Mesolithic to Late Neolithic period.
PROPOSED FUTURE WORK:	None
SPONSOR OR FUNDING BODY:	Stewart Milne Homes & Lynch Home
CAPTION(S) FOR ILLUSTRS:	
ADDRESS OF MAIN CONTRIBUTOR:	52 Elderpark Workspace, 100 Elderpark Street, Glasgow G51 3TR
EMAIL ADDRESS:	iraia.arabaolaza@guard-archaeology.co.uk
ARCHIVE LOCATION (intended/deposited)	Archive to be deposited in NMRS.

**Appendix H: Addendum to Written Scheme of Investigation****BARASSIE, TROON**

WRITTEN SCHEME OF INVESTIGATION

PROJECT 3330

## Contents

1.0	Non-Technical Summary	1
2.0	Site Location and Description	1
3.0	Archaeological Background	1
4.0	Project Objectives	2
5.0	Methodology	2
	2008 Excavation Trench)	2
	Expansion of 2008 Trench	2
	Human Remains	3
	Monitoring	3
6.0	Reporting, Archive & Small Finds Arrangements	3
7.0	Timetable	3
8.0	Personnel	4
9.0	Health and Safety	4



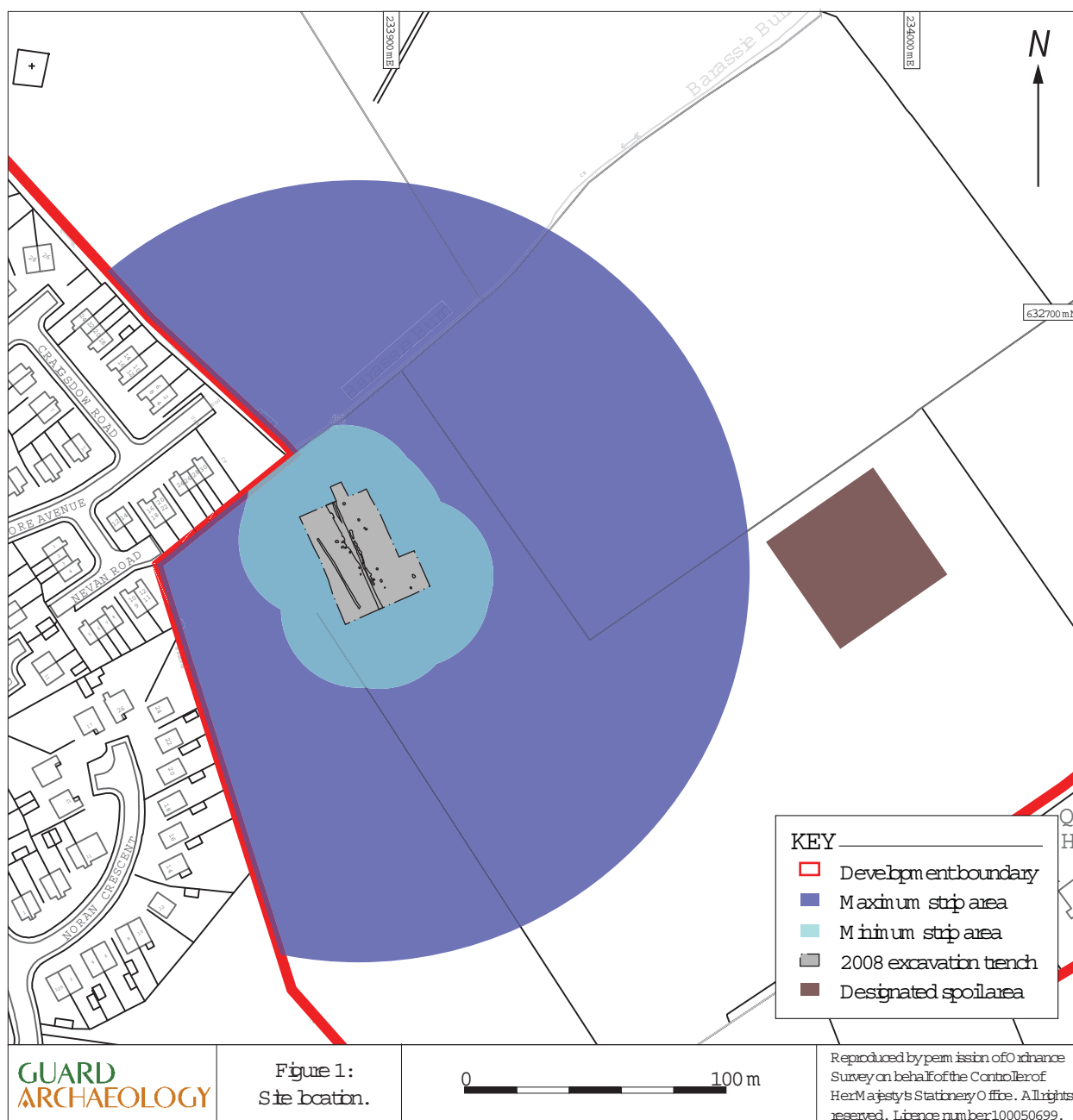
# BARASSIE, TROON

## WRITTEN SCHEME OF INVESTIGATION

### PROJECT 3330

by

John Atkinson



## Non-Technical Summary

- 1.1 This document sets out a scheme of archaeological works on land proposed for development to the north east of Troon, South Ayrshire, as part of a mitigation strategy to deal with archaeological remains within the bounds of the site. The proposed development of 680 units and associated access roads, underground services and landscaping (Planning Application reference number: **XXXXXX**) has led South Ayrshire Council's archaeological advisor (West of Scotland Archaeology Service (WoSAS)) to request that the site is the subject of the implementation of a programme of archaeological works.
- 1.2 This written scheme of investigation (WSI) follows on from a previous written scheme and addendum produced in 2008 for an earlier planning application (06/01756/OUT) for the site. This scheme establishes actions and products required to achieve stage 2 of a potentially three-stage process, required to fulfil the archaeological planning request. Stage 2 will include a programme of further excavation within the 2008 trench and its expansion in all directions. Any further features encountered during this expansion will also be excavated. Stage 3, should it be necessary, will include the analysis of any significant materials recovered during stages 1 and 2 and the preparation of a final publication report, if appropriate.

## Site Location and Description

- 2.1 The proposed development area lies to the north-east of the existing settlement of Troon. The site is identified as a greenfield housing land release site in the adopted South Ayrshire Local Plan. The application site is presently undeveloped agricultural land and extends to 42.2 hectares in size.
- 2.2 The site is bounded to the east by the A759, which runs between Barassie and Loans; to the north by Kilmarnock Road, beyond which is existing housing at Barassie; to the west by existing housing and Struthers Primary School beyond which is further housing at Meadowgreen; and to the south by a field boundary that follows Struthers Burn, and countryside, beyond which lies the village of Loans around 360 metres away.
- 2.3 The site is roughly rectangular in shape. There are two high points within the site, however the site is gently undulating agricultural land, which generally slopes down towards the west of the site. Barassie Burn flows east to west across the central part of the site. At the site's western edge, the burn turns at right angles, and follows the western boundary along the rear boundaries of the existing housing and travels in a northerly direction before passing under Kilmarnock Road. On the southern boundary of the development site lies Struthers Burn, which runs in an east-westerly direction before leaving the site and entering educational land adjacent to Struthers Primary School and Deveron Road beyond.
- 2.4 There is an existing group of farm buildings at Barassie Farm Steading, which are currently neglected and in a state of disrepair. Towards the south-eastern end of the site and outwith the site boundary, there are a few existing houses, known as Collenan Holdings and Cottages, by Loans.

## Archaeological Background

- 3.1 Following on from the trial trench evaluation of 236 trenches across the Barassie site in March and early April of 2008, a further phase of topsoil stripping was recommended (Becket 2008, 32-33). This phase of work identified two groups of archaeological features within trench 42 and trench 135 at the site.
- 3.2 Trench 42 was located in the WSW of the site around 40 m from the Barassie Burn and contained evidence for archaeological activity in the form of two shallow pits, four stakeholes and pottery and lithic finds. Trench 135 was positioned to the west of the site and contained one large pit filled with stones and charcoal.
- 3.3 Following on from these discoveries, a report (Becket 2008) was produced with recommendations for further mitigation. These mitigation measures included the removal of topsoil from around trench 42, so that the full extent of any archaeology could be assessed and dealt with prior to development and post-excavation analysis of the material encountered to date. Subsequent discussion with West

of Scotland Archaeology Service (WoSAS) indicated that the feature noted within trench 135 should also feature in this sample excavation strategy.

- 3.4 In July 2008, a phase of trench expansion and sample excavation was undertaken at trenches 42 and 135. Trench 135 was expanded to cover an area 10 m long by 10 m broad and no other features were encountered. This trench was subsequently recorded and backfilled. Trench 42 was expanded to 40 m by 30 m and revealed a further eleven pits and at least three phases of linear feature running along its length. Excavation of the pits revealed prehistoric ceramics from the Neolithic and Early Bronze Ages, together with a small assemblage of flint and coarse stone artefacts. The pits, together with those excavated during the evaluation (see Becket 2008) are interpreted as the remains of two distinct alignments running north-west to south east across the site.
- 3.5 Agreement had been reached between Stewart Milne Group and WoSAS in August 2008 to complete the excavation of the features within the trench and to expand the trench as per above. The works were never commissioned due to the recession and now form part of a new planning proposal to develop the site.

## Project Objectives

- 4.1 The project objectives are:
  - to complete the excavation of features noted in July 2008 as per WoSAS requirements to the satisfaction of the planning authority;
  - to establish the presence or absence of further archaeological features within the development site by expanding the 2008 trench;
  - excavate and record any significant archaeological remains revealed during the expansion process;
  - undertake funded post-excavation analysis and publication of the results on the archaeological works should they be warranted.

## Methodology

### 2008 Excavation Trench

- 5.1 Prior to topsoil stripping commencing the 2008 trench will be cleaned by hand to permit excavation of the previously identified features to be completed. This will include the excavation of up to 30% of the linear features and the excavation of pit features, which latterly weathered-out.

### Expansion of 2008 Trench

- 5.2 Whilst the further excavation of features is being completed, the trench will be expanded up to a maximum of 150 m radius of the original features (see figure 1) revealed during the evaluation phase (e.g. features 007, 008, 011, 012 and 016 (Becket 2008, 8)).
- 5.3 The expansion of the trench, in any direction, will be terminated 30 m from the last archaeological feature encountered in order to retain focus on the known remains across the site (see minimum strip limit on figure 1).
- 5.4 Should any archaeological remains be encountered during the expansion of the trench, they will be recorded and excavated. The level of recording will depend on the nature of the archaeology encountered, but in general terms will be based on excavation of between 50% and 100% of all significant postholes or pits and partial excavation of up to 30% of all significant linear features or ditches.
- 5.5 Archaeological recording will be by means of the standard methods employed in archaeological fieldwork. Any archaeological or other significant features will be recorded on *proforma* sheets in writing, by means of measured drawings and sketches and by both black and white print and digital photography.

- 5.6 In circumstances where substantial and significant archaeological deposits are encountered, the funding of further archaeologists and resources will be provided by the client to ensure that the remains are fully recorded to the highest professional standards.

### Human Remains

- 5.7 Though there is nothing to suggest their discovery is likely, should human remains be encountered, GUARD Archaeology will notify the local police and WoSAS immediately and thereafter follow prescribed procedures for their treatment, in accordance with legal requirements.

### Monitoring

- 5.8 WoSAS, acting on behalf of the Planning Authority will have a formal monitoring role. John Atkinson, GUARD Archaeology's Managing Director will act as project manager for all the works outlined above and will be the sole point of contact for any project-related liaison with WoSAS and the developer. The on-site project team will be happy to accommodate monitoring visits to the site during fieldwork, whether pre-arranged or otherwise. Any site visitors will also be expected to conform to the health and safety regime in place during the project.

## Reporting, Archive & Small Finds Arrangements

- 6.1 Following completion of archaeological fieldwork, GUARD Archaeology will prepare a report, outlining the main results and including lists of all features, finds, samples, photographs and drawings. This report will the excavation results from 2008 and provide recommendations for any further mitigation measures appropriate to any remains encountered. A short report detailing the results will also be submitted for publication in *Discovery and Excavation in Scotland*. In the event that Stage 3, analysis and publication is required a PERD and costing will be produced for agreement and subsequent discharging of the planning condition. Publication, where required, would normally be sought in a suitable academic journal.
- 6.2 Copies of the fieldwork report will be provided to Stewart Milne Group, to WoSAS and to the National Monuments Record for Scotland. Further copies can be distributed to other recipients if requested and specified.
- 6.3 The archaeological fieldwork report will be prepared to the standard of a Data Structure Report as defined by Historic Scotland, in their "Project Design, Implementation and Archiving" document (Historic Scotland Archaeological Procedure Paper 2, 1996). Archaeological reporting and archiving will in all respects be compliant with WoSAS standard conditions.
- 6.4 The laws relating to Treasure Trove and Bona Vacantia in Scotland apply to all finds where the original owner cannot be identified. This includes all material recovered during archaeological fieldwork. Accordingly, all assemblages recovered from archaeological fieldwork are claimed automatically by the Crown and must be reported to the Scottish Archaeological Finds Allocation Panel through the Treasure Trove Unit. GUARD Archaeology will insure this process of reporting is undertaken and temporarily store any finds until a decision has been made by the Panel regarding the museum which will be allocated the finds for permanent curation. All finds will be transferred to the appropriate museum within six months of completion of the fieldwork, if no post-excavation work is required, or at the end of the latest finishing post-excavation programme.

## Timetable

- 7.1 GUARD Archaeology aim to begin work on **XXXX** as soon as the WSI has been agreed. The programme of excavation and topsoil stripping is estimated to last for between two and five weeks depending on the extent of the archaeology. On completion of the excavation a report to data structures level will be completed within three weeks.
- 7.2 Should post-excavation analysis and reporting be merited, a Post-Excavation Research Design will be produced within one month of completion of all fieldwork at the site. Submission of final publication reports, should they be warranted, will be undertaken within a year of agreement of the PERD.

## Personnel

- 8.1 The programme of work will be directed by an experienced project officer from GUARD Archaeology. A full CV for this individual will be made available on request and prior to fieldwork beginning.

## Health and Safety

- 9.1 The project will be conducted in line with all current legislation and with the IFA approved SCAUM document "Health and Safety in Field Archaeology". Prior to fieldwork commencing a risk assessment of the project would be undertaken, giving rise to a project-specific safety plan.



**GUARD Archaeology Limited  
52 Elderpark Workspace  
100 Elderpark Street  
Glasgow  
G51 3TR**

**Tel: 0141 445 8800  
Fax: 0141 445 3222  
email: [info@guard-archaeology.co.uk](mailto:info@guard-archaeology.co.uk)**



**[www.guard-archaeology.co.uk](http://www.guard-archaeology.co.uk)**