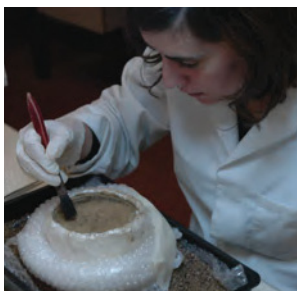


# GUARD ARCHAEOLOGY



## Bannockburn Visitor Centre Data Structure Report Project 3554

[www.guard-archaeology.co.uk](http://www.guard-archaeology.co.uk)

## **Bannockburn Visitor Centre Data Structure Report**

**On behalf of:** National Trust for Scotland

**NGR:** NS 796 906

**Project Number:** 3554

**Report by:** Iraia Arabaolaza

**Illustrations:** Fiona Jackson

**Project Manager:** J. Atkinson

**Approved by:**



**Date:**

10/09/2013

*This document has been prepared in accordance  
with GUARD Archaeology Limited standard operating procedures.*

**GUARD Archaeology Limited  
52 Elderpark Workspace  
100 Elderpark Street  
Glasgow  
G51 3TR**

**Tel: 0141 445 8800**

**Fax: 0141 445 3222**

**email: [info@guard-archaeology.co.uk](mailto:info@guard-archaeology.co.uk)**



**[www.guard-archaeology.co.uk](http://www.guard-archaeology.co.uk)**

## Contents

Executive Summary	5
Introduction	5
Site Location, Topography and Geology	5
Archaeological Background	5
Aims and Objectives	6
Methodology	6
Results	8
Discussion	11
Recommendations	12
Acknowledgements	13
Appendices	15
Appendix A: Bibliography	15
Appendix B: List of Contexts	15
Appendix C: List of Finds	18
Appendix D: List of Samples	19
Appendix E: List of Drawings	19
Appendix F: List of Photographs	20
Appendix G: Discovery and Excavation in Scotland	36
Appendix H: Project Design/WSI	37

## List of Figures

Figure 1: Site location	4
Figure 2: Plan of visitor centre features	7
Figure 3: Plan of Rotunda features	10

## List of Plates

Plate 1: Post-ex of features (005) and (006) from south-east	8
Plate 2: East facing section of pit (008)	8
Plate 3: Pit (029) with bone further revealed post cleaning	9
Plate 4: Star anchor point 1 on west side of Bore stone, from south west	9
Plate 5: Mid ex of pit (062) showing stones (063), from east	11
Plate 6: Watercolour by William Greenlees (1842) showing the Borestone, with St Ninian's and Stirling in the background	12
Plate 7: Picture postcard images of the Borestone, probably early twentieth century	12
Plate 8: Early images of the flagstaff: upper, a George Washington Wilson image of the early 1870s	12

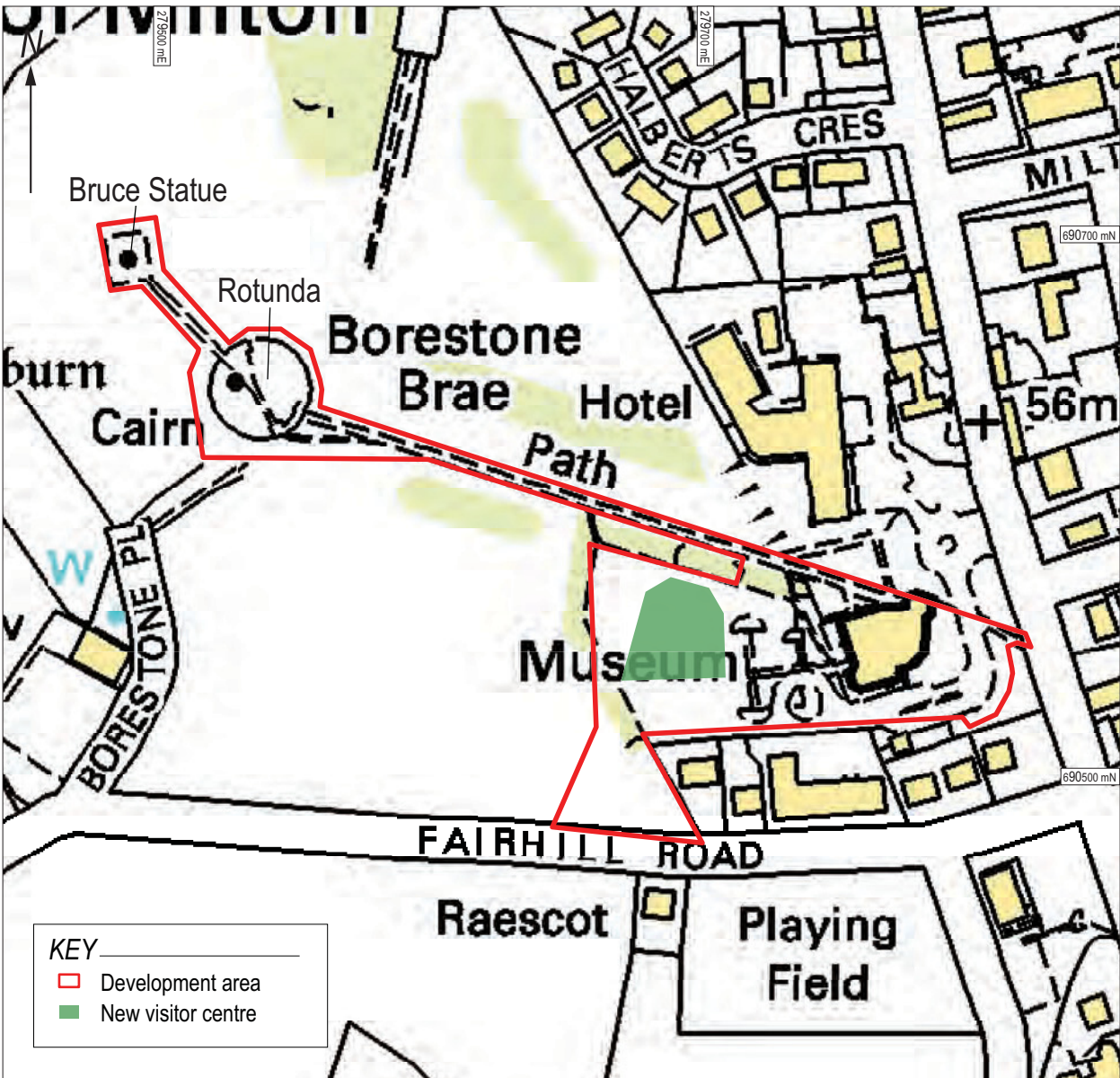
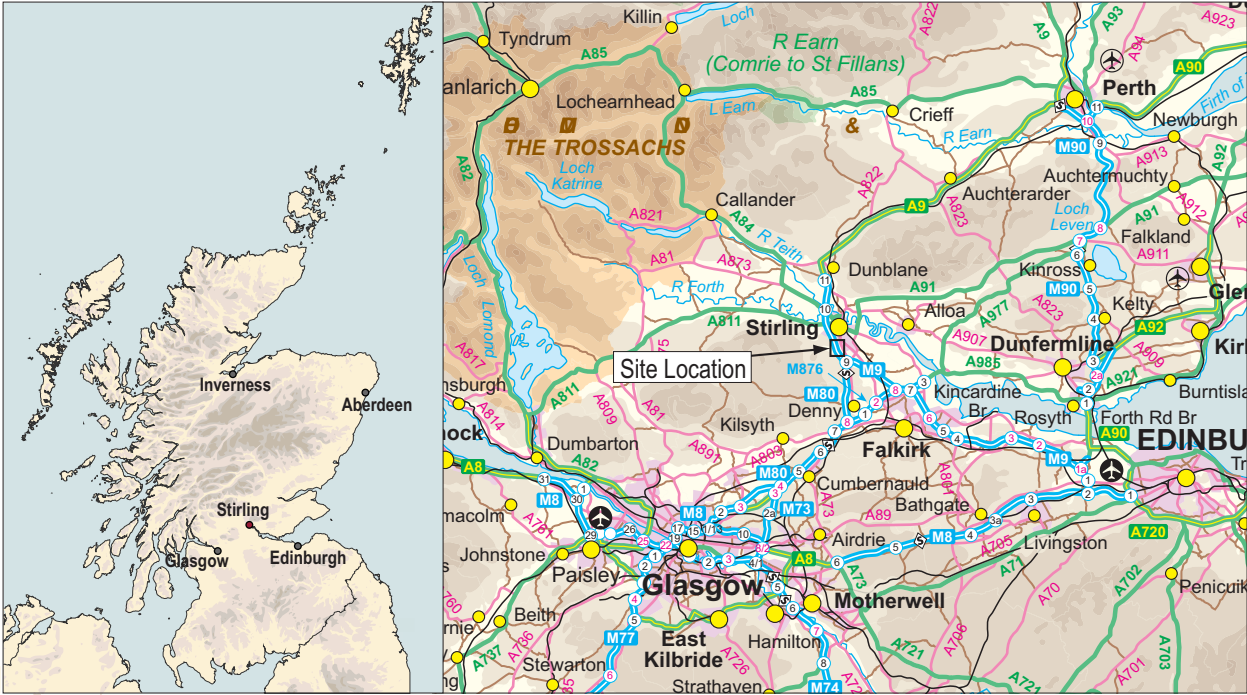


Figure 1:  
Site location.



## Executive Summary

- 1.1 GUARD Archaeology Limited was commissioned by the National Trust for Scotland to undertake an archaeological watching brief during the construction of a new visitor centre at Bannockburn. This work was undertaken between 9<sup>th</sup> July 2012 and 28<sup>th</sup> June 2013 and revealed several pits (two of which contained bone), the bore stone setting, four linear features and a possible stake hole.

## Introduction

- 2.1 This report sets out the results of an archaeological watching brief undertaken by GUARD Archaeology, on behalf of National Trust for Scotland on a site proposed for the construction of a new visitor centre at Bannockburn, Stirling. During the course of the watching brief several pits, four linear features, features related to the bore stone and a possible stake hole were discovered. GUARD Archaeology undertook this programme of work between 9<sup>th</sup> July 2012 and 28<sup>th</sup> June 2013 (OASIS Reference: guardarc1-156686).

## Site Location, Topography and Geology

- 3.1 The proposed development location is within the grounds of the Bannockburn visitor centre and to the south of Stirling (NGR NS 796 906 centred). The development area covers approximately 2.727 hectares.
- 3.2 The site is bounded by houses to the north and east, Fairhill road to the south and Bannockburn Park area to the west and currently consists of Bannockburn visitor centre building and its associated access road, car park, footpaths and park area as well as the Rotunda monument and Robert the Bruce statue. The land is fairly flat where the building and car park are located gradually stepping up towards the Rotunda monument and statue, both of which lie on a low hill (Figure 1).
- 3.3 The underlying drift geology consists of Devensian Blairdaff Moraine Formation, while the solid geology consists of Aberdeen formation unknown bedrock (Geology Digimap <http://digimap.edina.ac.uk/>).

## Archaeological Background

- 4.1 Between 23-24 June 1314 the Battle of Bannockburn, between the armies of Robert the Bruce and Edward II was fought at this battlefield site (SMR:1183.03). The victory of Robert the Bruce signified one of the most important events in the Scottish Wars of Independence. Associated with this battle a category A-listed monument (HB number 49860; NMRS NS79SE.15.2) including the rotunda, memorial cairn, flagpole and statue of King Robert I (NMRS NS79SE15.02) is situated on a plateau north-west of the Bannockburn Heritage Centre (NMRS: NS79SE.15).
- 4.2 A bore stone (SMR:783; NMRS NS79SE 15.01) situated at the top of Brock's Brae described in 1859 as having been nearly circular, 0.91 m in diameter and 0.6 m thick, with a 0.07 m wide hole in the centre. Little is known about the origin of the stone or the purpose of the hole, but the tradition that Bruce's standard was set in it at the Battle of Bannockburn does not appear in written accounts before 1723. A small trial trench was excavated in 2001 (SMR No 783.01) over the site of the original bore stone to determine if anything survived in situ. Excavation revealed the remains of a concrete foundation that appears to have been for a low wall which surrounded the stone and is shown on photographs of the site. Nothing was found of the bore stone itself, supporting the report that it had been removed in the 1960s and its pieces incorporated into the nearby cairn. However there is no physical evidence of this in the construction of the cairn.
- 4.3 A possible iron arrowhead (NMRS: NS79SE 879; SMR: 5394) with a pinched-in waist was found in topsoil during evaluation trenching work just down slope and to the south of the bore stone; 35 mm in length and weighing 4 g. Interpreted as the head of an iron arrowhead, which is missing its socketed end which may have broken-off. It is thought to be a bodkin arrowhead,

which had no barbs and was used for penetrating armour. This type of arrowhead was current at the time of the Battle of Bannockburn (Alexander 2004). A single pit was also found during this archaeological field evaluation (SMR: 5718.02) conducted during the filming of the “Two Men in a Trench” archaeology programme about the site, which also included a geophysical survey of the area (SMR: 5718.02). Another implement of unknown period was found at Halbert’s Bog (SMR: 2131) to the west of the current development site.

- 4.4 A metal detector survey (SMR: 5711) was also carried out at Bannockburn, to the south of the development area during an archaeological field evaluation on an area known as New Line Road (SMR: 5710). It revealed eighteenth century buttons, coins and musket balls possibly related to Jacobite activity (NMRS NS79SE.884) (Sneddon, 2007).
- 4.5 Finally, on the First Ordnance Survey map of 1865 a possible Roman Road is depicted east of the development site (Figure 2). None of the previous maps, including Roy’s Military Survey Map of Scotland 1752-1755 depicts this road. The Two Men in a Trench archaeological TV programme surveyed the area of the Roman road to assess its course opening a trench further south, at Plean, confirming its line (SMR: 5718.02; Pollard & Oliver 2002). Stirling Field and Archaeological Society also conducted investigations further to the north in the early 1970s, which revealed the presence of the Roman road under the entrance to the King’s Park in Stirling (Milne 1974, 65-6; Cachart 2010, 2).
- 4.6 More recent investigations include the ground penetrating radar and excavation of evaluation trenches across the area proposed for the new Bannockburn Visitor Centre and associated parking facilities (Banks, Ferguson and Arabaolaza, 2011; Ovenden, 2011; Arabaolaza, 2012). There were four possible pits, three possible stake holes and a possible furrow encountered during the excavation work conducted between 7th and 11th of May 2012 (Arabaolaza 2012). A charcoal sample from one of the pits produced a C<sup>14</sup> date in the Late Neolithic/Early Bronze Age. This highlighted the potential for not just prehistoric, but archaeology from all preceding periods to survive here despite the level of recent disturbance.
- 4.7 Further archaeological investigations were also conducted across the site between 18<sup>th</sup> and 27<sup>th</sup> July 2012 including: a geophysical survey followed by a series of hand and machine excavated evaluation trenches and metal detector survey. They revealed three features and material from the eighteenth through to the present day with the exception of two cannonballs that may be of a slightly earlier date which tell a story of the tourism at the site from the eighteenth century (Baillie, 2012).

## Aims and Objectives

- 5.1 The general aim of the watching brief was to identify any archaeological features encountered and record them fully. The specific objectives were:
  - Establish the presence or absence of any archaeological remains within the development area;
  - Determine the character, extent and significance of any archaeological deposits encountered;
  - Fully excavate and salvage any information possible from any significant features encountered.

## Methodology (Figure 1)

- 6.1 Topsoil was stripped using a mechanical excavator, fitted with a flat-bladed ditching bucket, under close archaeological supervision. The topsoil was removed in spits to the surface of the subsoil or the first significant archaeological horizon. All on-site recording, written, drawn and photographic, was to the standards normally pertaining in archaeological fieldwork.
- 6.2 Conditions for the watching brief were variable from snow to sunny conditions.

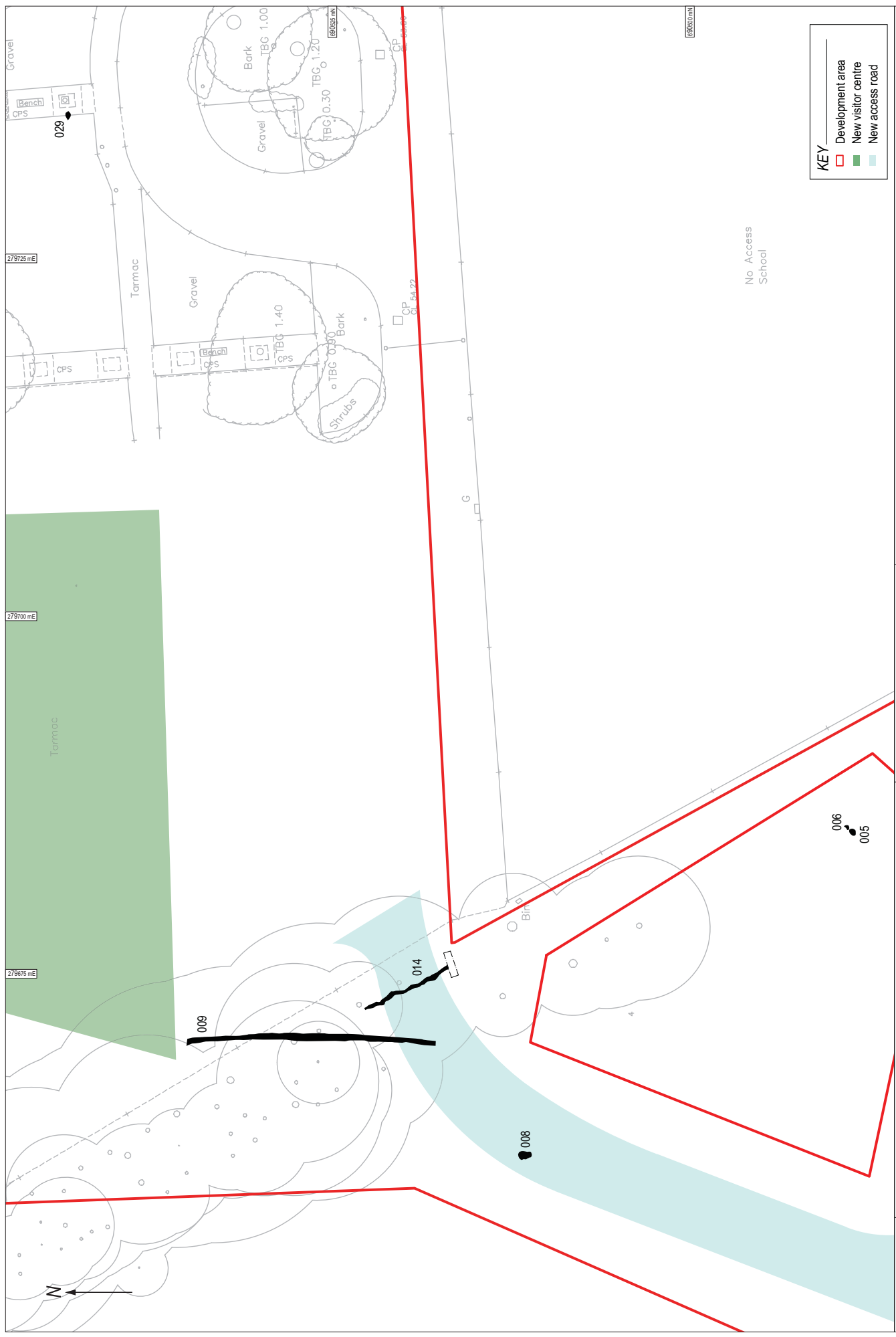


Figure 2:  
Plan of visitor centre features.

## Results

- 7.1 An area of less than 2.7 ha was stripped of topsoil to reveal mid to dark brown silty loam. Over the majority of the area topsoil deposits were 0.2 to 0.44 m thick. In areas where the old visitor centre, its car park and road access stand a tarmac surface 60 mm thick overlaying deposits of made ground between 0.5 to 0.6 m thick were recorded. During the course of the watching brief some features of archaeological significance were encountered. These included seven pits, four linear features, the bore stone setting and a possible stake hole. A full description of fills and layers is provided in Appendix A of this report.
- 7.2 Excavation at the area of the temporary site/compound revealed two similar oval-shaped pits (005 and 006) (Plate 1). The first measured 0.45 m by 0.35 m and 80 mm deep while pit 006 measured 0.4 m by 0.2 m and it was 70 mm deep. Both of them were filled by light brown sandy clay with frequent charcoal inclusions (003 and 004 respectively). No finds were discovered to aid interpretation of date or function.
- 7.3 North of these two features another sub-oval pit (008) was discovered on the access road. Measuring 0.87 m in length by 0.6 m in width and 0.2 m depth it was filled with mid grey brown silty clay (007) and it had some charcoal staining towards its edges (Plate 2). To its north and south-west of the new visitor centre's south-west corner a shallow discontinuous linear feature (009) measuring 17.4 m in length by 0.53 m in width and 30 mm deep and running north-east/south-west was recorded. Filled by mid brown silty clay (010) it was interpreted as possible natural gully.



Plate 1: Post-ex of features (005) and (006) from south-east.



Plate 2: East facing section of pit (008).

- 7.4 Further east, but also south of the new visitor centre's south-west corner, a possible linear stone feature orientated north/south was encountered (014). It measured 1.29 m in width by 0.6 m in depth and it was filled by mostly rounded /sub-rounded stones (012) overlaying mid-brown to dark/black gravely silty loam with frequent pockets of shale 0.39 m thick (013). A similar deposit of mid-brown silty loam 0.23 m deep (015) was identified underneath layer 013 which it turn covered a square ceramic drain. Although the feature was thought to be the footing of a field boundary the drain found at its base suggests that it might be a stone field drain.
- 7.5 East of the new visitor centre building a pit with animal bone was encountered (029) (Plate 3). Sub-rounded in shape it measured 0.6 m by 0.42 m by 0.13 m in depth and it was filled by mid-grey clay with occasional pebbles (028) (Figure 2).
- 7.6 Two linear features were recorded at the inside of the Rotunda (046 and 049). Feature 046 measured 0.45 m in width and 0.14 m in depth and it had NNW/SSE orientation. The second linear feature (049), was orientated north-east/south-west and measured 0.75 m length (minimum) and 0.5 m width and was 0.14 m in depth. Feature 046 was filled by mid-brown clay silt (047), while 049 was filled by mid-grey clay with frequent pebbles. Both of these were interpreted as possible furrows/planting ditches (Figure 3).
- 7.7 A number of features were identified associated with the bore stone setting inside the Rotunda (Figure 3). Different made ground deposits or possible old topsoils were observed in the area



suggesting that it had been landscaped or levelled prior to the construction of the bore stone. All these different fills overlaid pinkish boulder clay subsoil (037). This natural layer was in turn overlaid by light grey clay deposit of 0.11 m thick (061) of possible intermediate layer. Over this deposit two more layers (056 and 072) were recorded. The first one consisted of dark brown clay 0.19 m in depth (056) and concentrated at the NNE/SSW area of the bore stone setting. The second deposit (072) was mid-brown sandy clay 0.1 m deep. Both of them were thought to be possible old topsoil layers. Overlaying 056 and south of the bore stone setting a pinkish brown clay gravel deposit 0.12 m thick (071) was recorded. Interpreted as made ground it was cut by layer 064 and concrete star anchor point 1. Extending beyond the bore stone towards the flagpole another layer of made ground overlaying 072 was noted (073). Dark grey black in colour it was sandy clay and measured 60 mm in depth.

- 7.8 All these made ground deposits were truncated by the foundation cut for the bore stone setting (064). The sub-square cut measured 2.55 m north-west/south-east by 2.45 m north-east/south-west and 0.16 m deep. Its edges appeared unclear probably due to the area been disturbed by the insertion of the modern anchor point concrete platform to the north-east and by the 2011 excavation at its north-west (Bailie, 2012). It was filled by light mid-brown clay with frequent stones and gravel and it measured 0.18 m in depth (054). Fragments of ceramic dating to the nineteenth to twentieth century and glass were found within the deposit, which appeared to be disturbed at its north side. Within this deposit sub-rounded cobbles were recorded (070), possible packing stones. An interface deposit of dark grey brown silty clay and gravel 20 mm deep (060) was recorded concentrated on the central area under the concrete setting for the bore stone and covering the packing stones and fill of foundation cut. Overlaying it a concrete base for the bore stone setting was encountered (052). Measuring 1.7 m by 1.55 m and mainly 0.12 m thick, although it was thicker at its edges at 0.2 m, it presented a clear indentation of where the bore stone setting lay at its upper face. Around this concrete foundation, very compact dark grey brown silty shale clay was noted 20-30 mm thick. The bore stone consisted of four unbonded stones arranged into a square with a central hollow (058) (Plate 4). It measured 1.54 m by 1.73 m with a height between 0.22-0.28 m. They were covered by mid-brown silty topsoil/turf 0.34 m deep (034).



Plate 3: Pit (029) with bone further revealed post cleaning.



Plate 4: Star anchor point 1 on west side of Bore stone, from south west.

- 7.9 Underneath the interface layer (060) another pit (062) was encountered. It was fully covered by the concrete plinth 052 although it was ESE of the centre of the bore stone setting (058) and it cut through made ground 056 and 061. Sub-rounded in shape it measured 0.8 m by 0.82 m by 0.59 m in depth. During the excavation of this pit, a possible stone setting firmly arranged into the sides was noted (063). Formed by unbonded sub-rounded stones of varied sizes it had a depth of 0.35 m. It was found within the fill of pit 059, a mid-grey with pockets of pink/dark grey-brown clay measuring 0.59 m deep (Plate 5). Three glazed ceramic sherds (SFs 14, 19 and 20) and two glass fragments (SFs 21 and 23) of possible nineteenth to twentieth century date were found in this fill.

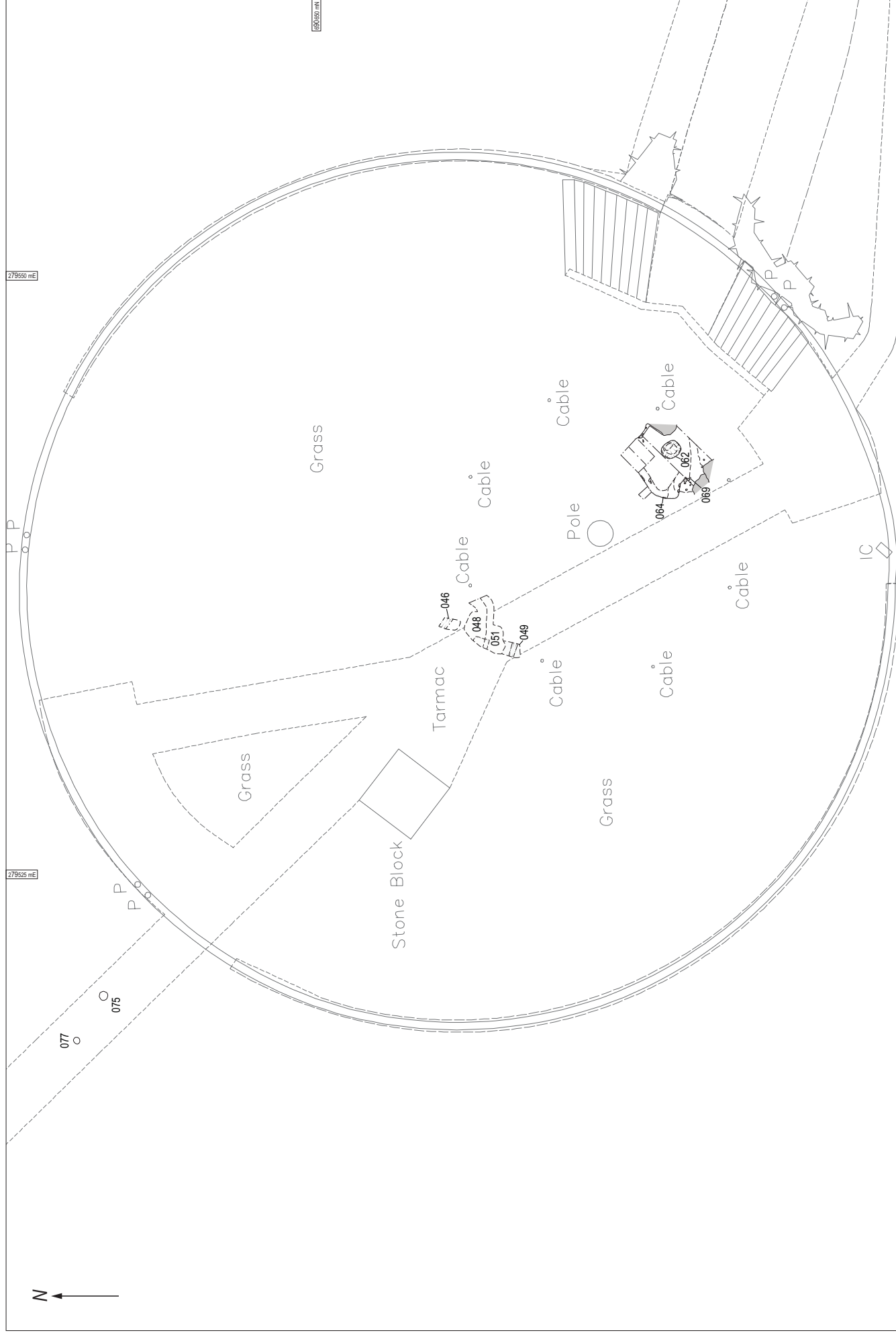


Figure 3:  
Plan of Rotunda features.



Plate 5: Mid ex of pit (062) showing stones (063), from east.

- 7.10 Finally, south-west of the cut for the bore stone setting and underneath made ground 056 a possible stake hole was identified (069). Round in shape and 'U' shaped in profile it measured 80 mm in diameter by 70 mm in depth. It was filled by mid-grey brown clayish silt with some gravel and pebbles (068).
- 7.11 Along the path that linked the Rotunda with the Robert the Bruce statue, two further pits were encountered. The first one, 075, was circular in shape and it measured 0.36 m in diameter by 0.18 m in depth. It was mostly filled by dark grey brown silty clay with frequent charcoal and moderate amount of small burnt bone fragments (076) and at its east side by mid-grey brown silty clay (079). No other finds were encountered within the fill which could help to date or identify its function; however it was truncated by the path and possibly by ploughing. The second pit (077) was sub-circular in shape and it measured 0.26 m in diameter by 60 mm in depth. It was filled by mid-grey brown silty clay with occasional sub-angular stones and charcoal flecks. No finds were recovered from this fill either (Figure 3).
- 7.12 During the watching brief a background scatter of artefacts was recovered from topsoil deposits across the area, including nineteenth to twentieth century ceramic and clay pipe fragments and unidentified iron objects.

## Discussion

- 8.1 The watching brief identified a number of features relating to the use of the site over time and a concentration of artefacts from Victorian period and into the twentieth century.
- 8.2 The stake hole south-west of the cut for the foundation was found underneath made ground 056, which was cut by the foundation cut for the bore stone setting and pit 62. This pit, found underneath an interface layer overlaid by the concrete platform of the bore stone setting is of an earlier unknown date. Its proximity to the location of the bore stone setting may suggest that it represents a previous attempt of a foundation for the bore stone. The finds found within its fill do certainly suggest a date between nineteenth or twentieth centuries. The bore stone setting found on site was most likely associated with the forged iron cage bolt down to a low plinth of large whinstone blocks erected by the local landowner in 1836 to protect the bore stone from visitors (Plate 6) (Wright, 2011). It therefore post-dates both the stake hole and pit features. Previous work conducted in the vicinity of the bore stone revealed an undated stake hole which could be associated with all these features (Bailie, 2012). However, without further analysis and AMS dating of these deposits it cannot be certain where they fit chronologically.
- 8.3 Early twentieth century photographs of the site suggest that the two linear features found on the inside of the Rotunda (046 and 049) may be connected to the hedgerow visible within the images (Plate 7). The made ground layers found around the area of the bore stone setting point to a possible phase of landscaping that resulted in the raising of the area (Plate 8). Apart from these features, remains of possible furrows and drains demonstrate an agricultural history to the use of the site. The linear stone feature, thought to be either a field drain or a footing for a boundary, is clear evidence of its agricultural past.



Plate 6: Watercolour by William Greenlees (1842) showing the Borestone, with St Ninian's and Stirling in the background © Stirling Smith Art Gallery & Museum taken from Bannockburn Conservation Plan NTS.

- 8.4 The rest of the pits found during the watching brief did not reveal any datable evidence and they will require further analysis, possibly AMS dating to determine their date. Previous work conducted in the old car park revealed a pit dated to the Late Neolithic/Early Bronze Age along with three more possible pits, three possible stake holes and a possible furrow (Arabaolaza, 2012). These previous archaeological findings highlight the potential for these pits to be of prehistoric or later date.



Plate 7: Picture postcard images of the Borestone, probably early twentieth century © National Trust for Scotland.



Plate 8: Early images of the flagstaff: upper, a George Washington Wilson image of the early 1870s; © University of Aberdeen Special Collections.

## Recommendations

- 9.1 The watching brief work has proved that several archaeologically sensitive deposits or features exist within the development area. However since all the ground work has been concluded, it is recommended that no further archaeological field work is required. Nonetheless post excavation work is recommended to assist determining the date and function on some of the features and analyse the finds found in the course of the watching brief.
- 9.2 GUARD Archaeology would stress that these recommendations are intended for guidance only. While the recommended mitigation strategy was developed following consultation with Derek Alexander of National Trust of Scotland, final decisions on the nature and extent of any future archaeological work rest with the planning authority.

## Acknowledgements

- 10.1 GUARD Archaeology would like to thank Derek Alexander of National Trust of Scotland and Mansell for their assistance. Likewise we are grateful to all the field archaeologists that were involved in the watching brief. Plant and drivers were supplied by Grant Civil Engineering. Technical support was from Aileen Maule and John Kiely. The illustrations were produced by Fiona Jackson. The report was desk top published by Gillian McSwan. The project was managed for GUARD Archaeology Limited by John Atkinson.

**Bannockburn Visitor Centre  
Data Structure Report**

**Section 2: Appendices**



**[www.guard-archaeology.co.uk](http://www.guard-archaeology.co.uk)**

## Appendices

### Appendix A: Bibliography

Alexander, D 2004 Bannockburn (St Ninians parish), medieval arrowhead, *Discovery Excav Scot*, 129.

Arabaolaza, I 2012 GUARD 3520: Bannockburn Visitor Centre, Data Structure Report, GUARD Archaeology Ltd., Glasgow (unpublished)

Bailie, W 2012 GUARD 3541: Monument Hill, Bannockburn, Archaeological Project Design, GUARD Archaeology Ltd., Glasgow. (Appended)

Banks, I, Ferguson, N and Arabaolaza, I 2011 'Bannockburn Tree Planting Evaluation' DRAFT report by the Centre for Battlefield Archaeology for the National Trust for Scotland.

Cachart, R 2010 'King's Park, Stirling (Stirling parish), excavation', *Discovery Excav Scot, New*, vol.11 Cathedral Communications Limited, Wiltshire, England.

Milne, D 1974 'Roman Road', *Discovery Excav Scot*, 65-6.

Ovenden, S 2011 'Bannockburn Ground Penetrating Radar Survey preliminary report', Rose Geophysical Consultants.

Pollard, T and Oliver, N 2002 *Two Men in a Trench: Battlefield Archaeology – The Key to Unlocking the Past*, Michael Joseph.

Sneddon, D 2007 Bannockburn Cemeteries metal detector survey and archaeological evaluation, GUARD report 2417, Glasgow.

Wright, A. P. K. 2011 Bannockburn 'Flying the Flag' Project, The Monuments at the Borestone:

Conservation Plan, NTS.

Sources consulted:

<http://canmore.rcahms.gov.uk>

<http://digimap.edina.ac.uk/>

Cartographic sources consulted:

John Thomson's Atlas of Scotland, Stirlingshire, 1832.

Ordnance Survey 1865. Stirling Sheet XVII.11 (St. Ninians) 25" to the mile.

### Appendix B: List of Contexts

Context No.	Area	Description	Interpretation
001	Temporary site	Dark brown silty loam with frequent roots 0.4-0.44 m thick	Topsoil
002	Temporary site	Light orangey white sandy clay	Subsoil
003	Temporary site	Loose light brown sandy clay with frequent charcoal	Fill of possible pit [005]
004	Temporary site	Loose light brown sandy clay with frequent charcoal and moderate pebbles	Fill of possible pit [006]/modern?
005	Temporary site	Oval shaped cut	Cut filled by (003)
006	Temporary site	Oval shaped cut	Cut filled by (004)
007	Access road	Firm mid grey brown silty clay	Fill of pit [008]
008	Access road	Sub-oval shaped cut	Cut filled by (007)

Context No.	Area	Description	Interpretation
009	Service trench and manhole	Linear cut	Cut of filled by (010)
010	Service trench and manhole	Firm mid brown silty clay	Fill of gully [009]
011	New access road	Firm dark grey silty clay	Dumped material 19th-20th century
012	SW of centre road	Dry stone footing	Foot of stone field boundary/drain
013	SW of centre road	Mid brown to dark/black gravelly silty loam with frequent pockets of shale	Matrix of dry stone drain (012)
014	SW of centre road	Linear cut	Cut for field boundary/dry stone drain (012)
015	SW of centre road	Mid brown silty loam	Lower fill of cut [014]
016		Void	Void
017	Drain A	Asphalt	Road surface
018	Drain A	Mixed deposit comprising black/grey silty clay	Levelling layer for road
019	Drain A	Hard orange/brown clay with occasional cobbles	Subsoil
020	Old Visitor centre/New car park	Mix brown/black silty ash	Debris from demolition
021	Old Visitor centre/New car park	Pink/grey/brown boulder clay	Subsoil
022	Old Visitor centre/New car park	Very compact mid drak grey silt clay	Intermediate/ possible old topsoil layer
023	Old Visitor centre/New car park	Linear cut	Cut of a likely modern drain
024	Old Visitor centre/New car park	Very compact mid grey clay	Fill of a likely modern drain [023]
025	Old Visitor centre/New car park	Loose to moderatelly compacted mid brown rubble/gravel	Modern levelling material
026	Old Visitor centre/New car park	Very compact light grey pink clay	Fill of [027]
027	Old Visitor centre/New car park	Rounded sub-rounded cut	Cut of a likely modern feature
028	Old Visitor centre/New car park	Moderately - very compact mid grey clay	Fill of pit [029]
029	Old Visitor centre/New car park	Sub-rounded cut	Cut of a pit containing animal bone
030	New Visitor centre to Rotunda	Loose mid brown silty loam	Topsoil
031	New Visitor centre to Rotunda	Moderately compacted light pinkish brown clay with occasional cobbles	Subsoil
032	New Visitor centre to Rotunda	Moderately compacted red blaes?	Build up ground
033	New Visitor centre to Rotunda	Moderately compacted mid to dark brown silty loam	Old topsoil
034	Rotunda	Moderately compacted mid brown silty deposit	Topsoil/turf
035	Rotunda	Asphalt	Pathway surface
036	Rotunda	Loose grey gravel	Levelling layer
037	Rotunda	Very compact pinkish clay	Possible subsoil
038	New Car park	Asphalt	Ground surface
039	New Car park	Yellow brown gravel/stony	Made up ground
040	New Car park	Firm pink/grey/brown clay	Subsoil
041	New Car park	Loose dark brown silty sand	Topsoil
042	New Car park	Type I gravel	Levelling layer
043	Grass at E. of old Visitor centre	Moderately compact mid brown	Topsoil/ disturbed
044	Grass at E. of old Visitor centre	Firm mixed red blaes and blackish gravel	Made up ground



Context No.	Area	Description	Interpretation
045	Rotunda	Very compact lighter mid brown silt clay	Intermediate layer
046	Rotunda	Linear cut	Cut of possible furrow
047	Rotunda	Moderately compact mid brown clay silt	Fill of linear feature [046]
048	Rotunda	Moderately compact mid brown clay silt	Intermediate layer
049	Rotunda	Linear cut	Cut of possible furrow
050	Rotunda	Very compact mid grey clay	Fill of linear feature [049]
051	Rotunda	Very compact mid grey clay	Made up ground
052	Rotunda	Concrete not faced, does not seem smoothed	Concrete bore stone setting foundation
053	Rotunda	Very compact dark grey brown silty shale clay	Support material for concrete foundation
054	Rotunda	Moderate to very compact light mid brown clay	Fill of foundation cut [064]
055	Rotunda	Moderate to very compact mid brown silty clay	Area of mottling between 054 and surrounding deposit, possibly affected by made ground
056	Rotunda	Very compact dark brown clay, organic looking	Possible made ground/old ground topsoil?
057	Rotunda	Moderate to very compact mostly red blaes	Made up ground
058	Rotunda	Not bonded stones, originally set into concrete foundation	Stones from bore stone setting
059	Rotunda	Firm mid grey mottling with pink/dark grey -brown pockets clay	Fill of pit [062]
060	Rotunda	Medium to firm dark grey/brown gravel and silty clay	Interface deposit
061	Rotunda	Very compact light grey clay	Possible intermediate layer
062	Rotunda	Sub-rounded cut	Cut of pit
063	Rotunda	Loosely compacted stones	Possible stone setting within pit [062]
064	Rotunda	Sub-angular, rounded square cut	Cut of foundation pit for concrete bore stone setting
065	Rotunda	Moist firm mid brown with orange and grey mottling topsoil and clay	Landscaping/infill layer overlying old tarmac road
066	Rotunda	Asphalt/Tarmac	Relict road surface
067	Rotunda	Dry firm mid grey brown sand	Stone bottoming for road (066)
068	Rotunda	Moderate compaction mid grey brown clayish silt	Possible fill of stakehole [069]
069	Rotunda	Round cut	Possible stakehole
070	Rotunda	Very compact mixed stones	Packing stones within the foundation cut [064]
071	Rotunda	Very compact pinkish brown clay-gravel	Likely made ground
072	Rotunda	Moderately compact mid brown sandy clay	Possible old topsoil
073	Rotunda	Very compact dark grey-black sand clay	Likely made ground deposit
074	Old Access/landscaped area	Medium compaction yellow/brown mottled silt with slight clay component	Subsoil
075	Rotunda	Circular cut	Possible pit for cremation
076	Rotunda	Moist firm dark grey/brown silty clay	Fill of pit [075]
077	Rotunda	Sub-circular cut	Truncated pit
078	Rotunda	Moist firm mid grey brown silty clay	Fill of pit [077]
079	Rotunda	Moist firm mid grey/brown silty clay	Fill of pit [075]
080	Visitor centre NE corner	Very firm mid grey silty clay	Transitional layer
081	Immediately west of new Visitor centre	Tarmac	Surface of old car park
082	Immediately west of new Visitor centre	Yellowish grey layer of rubble	Build up ground
083	Immediately west of new Visitor centre	Red/black blaes	Construction foundation layer
084	Immediately west of new Visitor centre	Dark grey silty clay	Intermediate layer

Context No.	Area	Description	Interpretation
085	Immediately west of new Visitor centre	Orangey pink boulder clay	Subsoil
086	Immediately west of new Visitor centre	Very rooty loam	Topsoil
087	Immediately NE of new Visitor centre	Loose pale yellow sand	Fill of modern pit [087]
088	Immediately NE of new Visitor centre	Rectangular cut	Cut of modern pit like feature
089	Immediately NE of new Visitor centre	Moderate greyish brown silty clay	Intermediate layer
090	North of east side of new Visitor centre	Loose mixed light brown silty loam	Made up ground
091	North of east side of new Visitor centre	Tarmac	Surface of old car park
092	North of east side of new Visitor centre	Hard compacted big angular stones/small boulders	Made up ground
093	North of east side of new Visitor centre	Red blaes	Made up ground
094	North of east side of new Visitor centre	Dark grey silty clay	Made up ground
095	North of east side of new Visitor centre	Light grey silty clay	Made up ground
096	North of east side of new Visitor centre	Light brown silty clay	Subsoil
097	New pathway, E of Rotunda	Mid brown silty loam	Topsoil
098	New pathway, E of Rotunda	Light brown silty clay	Made up ground
099	New pathway, E of Rotunda	Dark grey silty clay	Made up ground
100	New pathway, E of Rotunda	Light yellowy brown sandy silt	Subsoil/Made up ground
101	West of compound	Mid brown silty loam	Topsoil

### Appendix C: List of Finds

Find No.	Area	Context No.	No. of Pieces	Material	Description
1	SW of centre-road	015	2	Ceramic	White glazed pottery
2	SW of centre-road	015	1	Glass	Light blue sherd
3	SW of centre-road	013	Many	Ceramic	Sherds including redware/china etc.
4	SW of centre-road	013	1	Metal	Iron fragment
5	SW of centre-road	013	1	Glass	Bottle neck sherd
6	Old Visitor centre/new car park	022	1	Ceramic	Clay pipe stem fragment
7	Old Visitor centre/new car park	024	3	Metal	Iron/steel? Nails
8	Old Visitor centre/new car park	028	Many	Bone	Fragments some joints etc.
9	Rotunda	034	1	Ceramic	Clay pipe stem fragment
10	Rotunda	034	1	Metal	Possible plough/machine piece?
11	Rotunda	037	1	CBM	Blacradam' brick
12	Rotunda	060	1	CBM	Ceramic tile fragment
13	Rotunda	060	1	CBM	Tile/pipe fragment
14	Rotunda	059	1	Ceramic	Small white glazed pottery fragment
15	Rotunda	063	1	Lithic	Triangular grey-blue stone worked
16	Rotunda	063	1	Lithic	Sub-circular grey-blue stone
17	Rotunda	063	1	Lithic	Dome shaped, worked? Grey-blue stone
18	Rotunda	063	1	Lithic	Sub rectangular grooved/hollowed grey blue stone

Find No.	Area	Context No.	No. of Pieces	Material	Description
19	Rotunda	059	1	Ceramic	19-20th century glazed sherd
20	Rotunda	059	1	Ceramic	19-20th century glazed cup handle
21	Rotunda	059	3	Glass	Bottle sherds dark green/black
22	Rotunda	063	1	Lithic	Large sub rounded grey blue stone
23	Rotunda	059	1	Glass	Green sherd
24	Rotunda	063	1	Stone	Sub angular worked? Grey-blue stone
25	Rotunda	034	1	Metal	1962' one penny, copper alloy
26	West of compound	101	1	Bone	Animal bone fragment with possible cut marks

### Appendix D: List of Samples

Sample No.	Area	Context No.	Size	Reason for Sampling				Application/Comments
				Pot	Bone	Lithics	Botanics	
1	Temporary site	003	1L				x	CV on fill of possible pit
2	Temporary site	004	1L				x	CV on fill of possible pit
3	New access road	007	2L	x	x	x	x	CV on fill of possible pit
4	SW visitor centre-road curve	013	1L	x	x	x	x	Fil of [014] stone field boundary upper matrix
5	SW visitor centre-road curve	015	1L	x	x	x	x	Fil of [014] stone field boundary lower matrix
6	Old Visitor centre/new car park	026	1L					Grey clay deposit of large (possibly modern feature) cut [027]
7	Old Visitor centre/new car park	028	2L		x			Fill of bone filled pit
8	Rotunda	059	2L	x	x	x	x	Fill of pit below concrete bore stone setting- possible older setting
9	Rotunda	056	1L	x	x	x	x	Possible old turf/ground surface/topsoil around concrete bore stone setting
10	Rotunda	068	1S					Fill of possible stakehole [069]
11	Rotunda	060	1L					Fill underneath concrete block
12	Rotunda	054	1L					Fill of foundation cut for concrete block
13	Rotunda	061	1L					Possible old intermediate below (056)-around bore stone setting
14	Rotunda	076	2L		x			Fill of possible cremation
15	Rotunda	078	1L				x	CV on fill of possible pit

### Appendix E: List of Drawings

Drawing No.	Area	Sheet No.	Subject	Scale
1	Temporary site	1	Post-ex of (003)[005] and (004)[006]	1:20
2	New access road	2	East facing section of pit [008]	1:10
3	New access road	2	Plan of pit [008]	1:20
4	New access road	2	Location plan of features in new access road trench	1:100
5	Service trench	2	Plan of cut [009] in service trench SW corner of new visitor centre	1:100
6	Service trench	2	N facing section gully [009]	1:10
7	SW of centre	3	Plan of stone wall feature	1:20
8	SW of centre	3	N facing section of stone boundary	1:10
9	Rotunda	4	Pre-ex plan (voided feature, modern)	1:20
10	Rotunda	4	North facing section (voided feature, modern)	1:10
11	Rotunda	4	East facing section (voided feature, modern)	1:10
12	New carpark old Visitor centre	5	Mid ex of pit with bone	1:10
13	New carpark old Visitor centre	5	Post-ex of pit [029]	1:20

Drawing No.	Area	Sheet No.	Subject	Scale
14	Rotunda	5	Plan of star anchor point 3 post clean	1:10
16	Rotunda	1	Plan of concrete bore stone setting foundation before removal	1:20
17	Rotunda	6	Plan of bore stone setting after removal of concrete (052)	1:20
18	Rotunda	7	Overlay of DR#17 with additional detail of possible pit (059)	1:20
19	Rotunda	8	Mid ex of pit showing stones in situ-overlay DR# 18	1:20
20	Rotunda	8	NE facing section of pit [062]	1:10
21	Rotunda	11	Mid ex of pit showing stones in situ-overlay DR# 19	1:20
22	Rotunda	11	SW-NE profile of [062]	1:10
23	Rotunda	11	Post ex plan of pit [062]	1:20
24	Rotunda	9	Plan of relict road (066)	1:50
25	Rotunda	9	Section of deposits and road (066)	1:50
26	Rotunda	10	Plan of foundation cut feature mid ex showing potential feature (065)	1:20
27	Rotunda	10	SE facing section of foundation cut feature [064]	1:10
28	Rotunda	10	Profile through stakehole- SE facing	1:10
29	Rotunda	12	Post-ex of W half of cut [064]- foundation pit	1:20
30	Rotunda	1	Post-ex of trench- overlay of DR# 29	1:20
31	Rotunda	13	N facing section of pit cut [075]	1:10
32	Rotunda	13	S facing section of pit cut [077]	1:10
33	Rotunda	13	Plan of pits [075] and [077] in footpath trench from Rotunda to Bruce statue	1:50

## Appendix F: List of Photographs

### Digital: File 1

Frame	Area	Context No.	Subject	Taken from
1	Temporary site	-	ID shot	-
2	Temporary site	-	General shot of temporary site pre-ex	N
3	Temporary site	-	General shot of temporary site pre-ex	NE
4	Temporary site	-	General shot of temporary site pre-ex	N
5	Temporary site	003,004	Charcoal feature pre-ex	SE
6	Temporary site	003,004	Charcoal feature pre-ex	S
7	Temporary site	003,004	Charcoal feature pre-ex	S
8	Temporary site	003,004	Charcoal feature pre-ex	NE
9	Temporary site	003,005	SW facing section	SW
10	Temporary site	003,005	SW facing section	SW
11	Temporary site	004,006	NE facing section	NE
12	Temporary site	004,006	NE facing section	NE
13	Temporary site	005,006	Post-ex of features [005] and [006]	SE
14	Temporary site	005,006	Post-ex of features [005] and [006]	SE
15	Temporary site	-	Post-ex of stripped area	SE
16	Temporary site	-	Post-ex of stripped area	E
17	Temporary site	-	Post-ex of stripped area	E
18	Adjacent to main road	-	Vegetation initially removed	S
19	Adjacent to main road	-	General stripping of area	NE
20	Adjacent to main road	-	General stripping of area	SW
21	Adjacent to main road	-	Showing existing evaluation trench	SE
22	Adjacent to main road	-	Showing existing evaluation trench	E
23	Adjacent to main road	-	Rubble fill road	S
24	Adjacent to main road	-	Rubble fill road	S
25	Adjacent to main road	-	Compacted road surface (modern)	S
26	Adjacent to main road	-	Compacted road surface (modern)	SW
27	Adjacent to main road	-	Manhole/drain in situ	S
28	Adjacent to main road	-	Manhole/drain in evaluation trench	N

Frame	Area	Context No.	Subject	Taken from
29	Adjacent to main road	-	General shots of stripping	N
30	Adjacent to main road	-	General shots of stripping	N
31	Adjacent to main road	-	General shots of stripping	N
32	Adjacent to main road	-	General shots of stripping	W
33	Adjacent to main road	-	General shots of stripping	W
34	Adjacent to main road	-	General shots of stripping	W
35	Adjacent to main road	-	General shots	S
36	Adjacent to main road	-	General shots with old photograph	S
37	Adjacent to main road	-	General shot without old photograph	S
38	Compound area	-	General shots of compound area completed	N
39	Compound area	-	General shots of compound area completed	N
40	Compound area	-	General shots of compound area completed	S
41	Adjacent to road	-	General shots of stripping	S
42	Adjacent to road	-	General shots of stripping	S
43	Adjacent to road	-	General shots of stripping	S
44	-	-	Working shot north foundation	S
45	-	-	Depth to subsoil north foundation	E
46	-	-	CCTV camera pit	N
47	-	-	Western foundation trench - working shot	E
48	-	-	Western foundation trench - working shot	SE
49	-	-	Western foundation trench - working shot	SE
50	-	-	Digging western foundation	S
51	-	-	Digging western foundation	S
52	-	-	Working shot NW corner	W
53	-	-	Working shot NW corner	-
54	-	-	Working shot NW corner	-
55	-	-	Stone masonry	-
56	Building foundations	-	General shots of excavations	-
57	Building foundations	-	General shots of excavations	E
58	Building foundations	-	General shots of excavations	E
59	Building foundations	-	General shots of excavations	E
60	Building foundations	-	General shots of excavations	S
61	Building foundations	-	General shots of excavations	SE
62	Building foundations	-	General shots of excavations	SE
63	Building foundations	-	General shots of excavations	E
64	Building foundations	-	General shots of excavations	W
65	Building foundations	-	General shots of excavations	N
66	Building foundations	-	General shots of excavations	N
67	Building foundations	-	General shots of excavations	N
68	Building foundations	-	General shots of excavations	N
69	Building foundations	-	General shots of excavations	N
70	Building foundations	-	General shots of excavations	W
71	Building foundations	-	General shots of excavations	W
72	Building foundations	-	General shots of excavations	W
73	Building foundations	-	General shots of excavations	-
74	Building foundations	-	General shots of excavations	-
75	-	-	Eastern foundation depth	E
76	-	-	Excavated eastern foundation	S
77	-	-	Excavated eastern foundation	S
78	SW	-	SW corner- reduced ground	W
79	SW	-	SW corner- reduced ground	SW
80	-	-	Working shot	W
81	-	-	General working shot	W
82	-	-	General working shot	N

Frame	Area	Context No.	Subject	Taken from
83	Courtyard	-	Working shot	S
84	Courtyard	-	Working shot	-
85	Courtyard	-	S facing section of courtyard manhole	S
86	Courtyard	-	Working shot- W facing section	W
87	Service trench and manhole	-	Partial strip of service trench from SW corner of new centre	N
88	Service trench and manhole	-	Partial strip of service trench from SW corner of new centre showing stony sub-base	N
89	New access road	008	Pit cut pre-ex	E
90	New access road	008	Pit cut pre-ex	E
91	Service trench and manhole	009	Linear feature	N
92	New access road	008	E facing section pit 008	E
93	New access road	008	E facing section pit 008	E
94	New access road	011	General view of deposit 011	E
95	New access road	011	General view of deposit 011	E
96	N of building	-	Working shot	E
97	N of building	-	Working shot	E
98	N of building	-	Working shot	N
99	N of building	-	Working shot	W
100	N of building	-	Working shot	S
101	N of building	-	Working shot	N
102	N of building	-	Working shot	W
103	N of building	-	Working shot	S
104	W of new centre	-	General of stripping showing SWW-NEE ceramic drain	W
105	W of new centre	-	General of area	SW
106	W of new centre	-	E section of stripped area	E
107	W of new centre	-	W area of stripping	S
108	W of new centre	-	Working shot	NW
109	W of new centre	-	W area from NE	NE
110	W of new centre	-	Detail showing ceramic drain	E
111	W of new centre	-	E section of area- oblique	NE
112	W of new centre	-	W area after stripping	S
113	S of new centre	-	Continuation of access road- pre stripping	SE
114	S of new centre	-	Working shot	NE
115	S of new centre	012,013,014,015	View of linear stone feature	N
116	S of new centre	012,013,014,015	View of linear stone feature	S
117	S of new centre	012,013,014,015	S facing section of feature	S
118	S of new centre	012,013,014,015	S facing section of feature	S
119	S of new centre	012,013,014,015	N facing section of feature	N
120	S of new centre	012,013,014,015	N facing section of feature	N
121	S of new centre	012,013,014,015	Detail in plan at S end	E
122	S of new centre	012,013,014,015	Detail in plan at N end	E
123	S of new centre	012,013,014,015	Section showing field drain	-
124	S of new centre	012,013,014,015	Oblique view of feature	NE
125	S of new centre	012,013,014,015	Slot pre-ex	N
126	S of new centre	012,013,014,015	Slot pre-ex	N
127	S of new centre	012,013,014,015	Slot mid- ex showing [014]	E
128	S of new centre	012,013,014,015	Slot mid- ex showing [014]	E
129	S of new centre	012,013,014,015	N facing section of feature	N
130	S of new centre	012,013,014,015	N facing section of feature	N
131	S of new centre	012,013,014,015	Slot post-ex	E
132	S of new centre	012,013,014,015	Slot post-ex	W
133	S of new centre	012,013,014,015	Detail of ceramic drain in situ	W
134	S of new centre	012	Stones removed from field boundary	-

Frame	Area	Context No.	Subject	Taken from
135	S of new centre	012,013	General of feature and pipe	SW
136	S of new centre	012,013	Showing proximity of iron pipe	W
137	S of new centre	012,013,014,015	Stripping of field boundary	S
138	S of new centre	012,014,015	Stripping of field boundary	SW
139	S of new centre	012,014,015	Section	N
140	S of new centre	012,014,015	Ceramic drain	N
141	S of new centre	012,014,015	Ceramic drain detail	N
142	S of new centre	012,013,014,015	N facing section of area	N
143	S of new centre	012,013,014,015	Drain in feature section	N
144	S of new centre	012,013,014,015	Drain in feature section detail	N
145	S of new centre	012,013,014,015	Drain in feature section	N
146	S of new centre- road	-	Working shot	SW
147	S of new centre- road	-	Working shot	SW
148	S of new centre- road	-	Area stripped	SE
149	S end of road	-	Working shot- pre stripping	NE
150	S end of road	-	W facing section of area	W
151	S end of road	-	Hedgerow section pre digging	E
152	S end of road	-	Working shot	NW
153	-	-	Working shot	W
154	-	-	Working shot	W
155	-	-	Working shot	S
156	-	-	Working shot	N
157	-	-	Working shot	-
158	-	-	Working shot	-
159	-	-	Working shot	-
160	-	-	Working shot	-
161	-	-	Working shot	-
162	-	-	Post ex of strip	NW
163	Rotunda	-	Red blaes layer	S
164	Rotunda	-	Black layer	S
165	Rotunda	-	Working shot	-
166	Rotunda	-	Working shot	-
167	Rotunda	-	Working shot	-
168	Rotunda	-	Pre-ex of feature (concrete slab- modern)	S
169	Rotunda	-	Pre-ex of feature	S
170	Rotunda	-	Mid-ex of feature	S
171	Rotunda	-	Mid-ex of feature	E
172	Rotunda	-	Mid-ex of feature	E
173	-	-	Working shot	-
174	-	-	Working shot	-
175	-	-	Working shot	-
176	-	-	Working shot	-
177	-	-	Working shot	E
178	-	-	Working shot	E
179	Rotunda	-	Concrete slab	E
180	Rotunda	-	E facing section	E
181	Rotunda	-	Working shot	N
182	S end	-	Working shot	E
183	S end	-	Working shot	N
184	S end	-	Working shot	E

## File 2

Frame	Area	Context No.	Subject	Taken from
1	-	-	ID shot	-
2	-	-	ID shot	-
3	Drain A	-	Pre-ex view of drain location	SE
4	Drain A	-	Pre-ex view of drain location	SE
5	Drain A	-	Pre-ex view of drain location	S
6	-	-	Location of former visitor centre	SW
7	-	-	Location of former visitor centre	SSW
8	-	-	Location of former visitor centre	SSE
9	Drain A	-	Pre-ex on line of drain	SE
10	Drain A	019	Post-ex of drain cut	SE
11	Drain A	017-019	SW facing section of drain cut	SW
12	Drain A	019	Post ex of next section of drain cut	E
13	Drain A	019	Post ex of next section to skip	E
14	Drain A	017	Pre ex of area to be excavated	NE
15	Drain A	019	Post ex of north spur, drain A	S
16	Drain A	019	Post ex from terminus to North spur	W
17	Drain A	019	Post ex from N spur to east	W
18	Drain B	019	Post ex: westernmost section	W
19	Access road	-	After widening of site access	NW
20	Access road	-	Above in location context	NW
21	Drain B	-	In location context	W
22	New car park	CBR 1	W facing section of CBR/test pit 1	SW
23	New car park	CBR 1	Post ex of CBR/test pit 1	S
24	New car park	CBR 2	NE facing section of CBR pit 2- N end	NE
25	New car park	CBR 2	Post ex of CBR pit 2	NW
26	New car park	CBR 2	SW facing section of CBR pit 2- S end	SW
27	New car park	CBR 4	N facing section of CBR/test pit 4	N
28	New car park	CBR 3	W facing section of CBR/test pit 3	W
29	New car park	-	Post-ex	-
30	New car park	-	General view before rubble removal-snow	S
31	New car park	-	Working shot of stripping in snow	E
32	New car park	-	Concrete wall foundation before removal	E
33	New car park	-	E section of trench- W facing	W
34	New car park	-	Modern drainage showing slot	W
35	-	-	Modern drainage showing slot	W
36	-	-	Modern drainage showing planting hole/gravel	SE
37	-	-	Modern drainage showing gravel	E
38	Old Visitor centre/new car park	-	Visitor centre foundations before removal	SE
39	Old Visitor centre/new car park	-	Working shot- removal of foundations	E
40	Old Visitor centre/new car park	-	Working shot- removal of foundations	-
41	Old Visitor centre/new car park	022	Intermediate deposit	E
42	Old Visitor centre/new car park	-	Working shot	-
43	Old Visitor centre/new car park	022	Ceramic drain below 022	E
44	Old Visitor centre/new car park	-	Working shot	-
45	Old Visitor centre/new car park	022	N facing sectoin showing 022	N
46	Old Visitor centre/new car park	-	N facing sectoin showing 022 and drain	N



Frame	Area	Context No.	Subject	Taken from
47	Old Visitor centre/new car park	-	Working shot	-
48	Old Visitor centre/new car park	-	Square pit pre ex (in snow)	S
49	Old Visitor centre/new car park	-	Working shot	-
50	Old Visitor centre/new car park	-	Working shot	-
51	Old Visitor centre/new car park	-	Showing section through modern pit	E
52	Old Visitor centre/new car park	023/024	Stone/rubble drain showing slot	N
53	Old Visitor centre/new car park	023/024	Stone/rubble drain showing slot	N
54	Old Visitor centre/new car park	-	Section through pit	-
55	Old Visitor centre/new car park	-	Section through pit	-
56	Old Visitor centre/new car park	-	Slot through drain?	-
57	Old Visitor centre/new car park	-	Section	-
58	Old Visitor centre/new car park	-	Slot through drain?	-
59	Old Visitor centre/new car park	-	Two manholes- working shot	NE
60	Old Visitor centre/new car park	-	Section of slot into light grey clay	E
61	Old Visitor centre/new car park	-	View of slot into light grey clay	E
62	Old Visitor centre/new car park	-	General view of light clay and adjacent drain	NE
63	Old Visitor centre/new car park	-	Two manholes	E
64	Old Visitor centre/new car park	-	Section and possible drainage channel	NE
65	Old Visitor centre/new car park	-	General of stripping showing former planting	NE
66	Old Visitor centre/new car park	028	Pit with bone after cleaning	N
67	Old Visitor centre/new car park	028	Pit with bone after cleaning	N
68	Old Visitor centre/new car park	028	Pit with bone after cleaning (detail)	N
69	Old Visitor centre/new car park	028	Pit with bone further revealed post cleaning	N
70	Old Visitor centre/new car park	028	Pit with bone further revealed post cleaning (detail)	N
71	Old Visitor centre/new car park	-	General of stripped area	NW
72	Old Visitor centre/new car park	-	General of stripped area	N
73	Visitor centre to Rotunda	030,032,033	Area dug and backfilled 5/2/13	W
74	Visitor centre to Rotunda	030,032,033	Area to be dug approaching Rotunda	E
75	Old Visitor centre/new car park	-	Snow on site first thing	NE
76	Old Visitor centre/new car park	-	Section	-
77	Old Visitor centre/new car park	028/029	Mid ex of pit bone in situ	N

Frame	Area	Context No.	Subject	Taken from
78	Old Visitor centre/new car park	028/029	Mid ex of pit bone in situ	N
79	Old Visitor centre/new car park	028/029	Detail of mid ex	N
80	Old Visitor centre/new car park	028/029	Pit after further bone removal	N
81	Old Visitor centre/new car park	028/029	Post ex of pit	N
82	Old Visitor centre/new car park	028/029	Post ex of pit	N
83	Old Visitor centre/new car park		General of stripped W extent	NE
84	Old Visitor centre/new car park	028/029	Post ex of pit	N
85	Old Visitor centre/new car park	-	General of snow on site	NW
86	Old Visitor centre/new car park	-	General of snow on site	E
87	Old Visitor centre/new car park	-	General of snow on site	S
88	Old Visitor centre/new car park	-	Stripped area to SW	SE
89	Old Visitor centre/new car park	-	Working shot	N
90	Rotunda	034-037	Concrete foundation pit- post ex	SW
91	Visitor centre to Rotunda	030-033	Working shot digging pipe trench- 032 visible	SE
92	Visitor centre to Rotunda	030-033	Working shot digging pipe trench- 032 visible	SE
93	Visitor centre to Rotunda	030-033	N facing section	N
94	Visitor centre to Rotunda	030-033	General of trench	SE
95	Visitor centre to Rotunda	030-033	General of trench	SW
96	New car park	-	General view car park area pre ex	S
97	New car park	-	General view during removal of tarmac	E
98	New car park	-	General view machining topsoil at north end of new car park	-
99	New car park	040/041	Topsoil depth at N end of car park	-
100	New car park	038/039	Tarmac and stoney gravel N end car park	-
101	New car park	042/039	Stoney gravel and type I being removed	-
102	New car park	-	General view during new car park works	SW
103	New car park	-	General view during new car park works	NE
104	New car park	-	Working shot	-
105	New car park	039	Detail deposit 039 possibly forming earlier surface below tarmac or make-up for tarmac	E
106	New car park	039	Formation level at S end of new car park	N
107	New car park	-	Pipe trench S side of new car park excavated through previously monitored work	N
108	New car park	022/038/040	Deposit 022 in pipe trench	N
109	New car park	-	General view pipe trench and manhole in south bay of car park	W
110	New car park	-	General view stripping S side of S bay of car park	SW

### File 3

Frame	Area	Context No.	Subject	Taken from
1	-	-	ID shot	-
2	-	-	General shot of tree pit excavated	E
3	-	-	View of section of pit showing modern make up	S
4	-	-	General location shot of above pit	S

Frame	Area	Context No.	Subject	Taken from
5	-	-	General location shot of above pit	SE
6	-	-	General location shot of above pit	S
7	Rotunda	-	Rotunda interior before stripping	S
8	Rotunda	-	Beginning to dig drainage trench (abandoned)	SE
9	Rotunda	-	SE facing section of above	SE
10	Rotunda	-	Working shot	SE
11	Rotunda	-	Memorial monument - interior rotunda after turf removed	E
12	Rotunda	-	NE interior- lowered to red blaes	SE
13	Rotunda	-	Rotunda wall showing foundation cut	SW
14	Rotunda	-	Original star- shaped flag mast anchor 1	NW
15	Rotunda	-	Original star- shaped flag mast anchor 1 detail	NW
16	Rotunda	-	Original anchor point on concrete base 3	N
17	Rotunda	-	Original anchor point on concrete base 3 detail	N
18	Rotunda	-	Detail of disturbed original anchor point 2	N
19	Rotunda	-	General of disturbed original anchor point 2	NE
20	Rotunda	-	General of W side topsoil stripping	E
21	Rotunda	-	Detail of original anchor 3 showing overlaying concrete	NE
22	Rotunda	-	General showing cairn monument/concrete foundations	SW
23	Rotunda	-	Working shot - beginning lowering at S side	NE
24	Rotunda	-	Modern post - wooden post still in situ	N
25	Rotunda	-	Modern post - wooden post still in situ	N
26	Rotunda	-	Stripping on to built up ground containing turf	N
27	Rotunda	-	SW facing section below cairn, concrete foundation	SW
28	Rotunda	-	W area after stripping onto 037	E
29	Rotunda	-	SW area after stripping on to made ground	NE
30	Rotunda	-	Bore stone setting after first stripping	SW
32	Rotunda	-	Old anchor point (8) to east side of Bore stone setting	NE
32	Rotunda	-	Old anchor point (8) to east side of Bore stone setting	NE
33	Rotunda	-	Old anchor point (8) to east side of Bore stone setting	NW
34	Rotunda	-	Old anchor point (8) to east side of Bore stone setting	
35	Rotunda	-	Star anchor point 1 on west side of Bore hole	NW
36	Rotunda	-	Star anchor point 1 on west side of Bore hole	SW
37	Rotunda	-	Stripping in area of possible hut cut	SE
38	Rotunda	-	Working shot- showing line of removed path in relation to concrete anchor	E
39	Rotunda	-	Curved drainage trench- partially filled	S
40	Rotunda	-	Possible features - linear/deposit	N
41	Rotunda	-	Possible features/deposits	SW
42	Rotunda	-	Linear disappearing under baulk	SW
43	Rotunda	-	Possible linear feature	S
44	Rotunda	-	Possible linear feature	SE
45	Rotunda	-	Working shot - drainage trench on to subsoil	E
46	Rotunda	-	SW facing section above linear feature	SW
47	Rotunda	-	Drainage trench on to blaes - W end	E
48	Rotunda	-	General showing linear drain	NE
49	Rotunda	-	Working shot - stripping on to 037 at W	E
50	Rotunda	-	General showing drainage trench	NE
51	Rotunda	-	Removal of Bore stone setting stones	E
52	Rotunda	-	Removal of Bore stone setting stones	SE
53	Rotunda	-	Removal of Bore stone setting stones	NE
54	Rotunda	-	Removal of Bore stone setting stones	NE
55	Rotunda	-	Removal of Bore stone setting stones	NE
56	Rotunda	-	Removal of Bore stone setting stones	NE
57	Rotunda	-	Removal of Bore stone setting stones	N

Frame	Area	Context No.	Subject	Taken from
58	Rotunda	-	Removal of Bore stone setting stones	NE
59	Rotunda	-	Removal of Bore stone setting stones	-
60	Rotunda	-	Removal of Bore stone setting stones	-
61	Rotunda	-	Removal of Bore stone setting stones	-
62	Rotunda	-	Removal of Bore stone setting stones	-
63	Rotunda	049/050	Post-ex slot through linear feature	W
64	Rotunda	049/050	SW facing section	SW
65	Rotunda	048	Slot through deposits	W
66	Rotunda	046/047	Post ex slot through likely linear feature	SW
67	Rotunda	034/045/047/037	SW facing section above linear feature	SW
68	Rotunda	034/045	SW facing section below anchor 5	SW
69	Rotunda	046-050	Features/deposits cleaned back	SW
70	Rotunda	046-050	Features/deposits cleaned back	NW
71	Rotunda	052-057	Concrete foundation before removal	SE
72	Rotunda	052-057	Concrete foundation before removal	NW
73	Rotunda	052-057	Concrete foundation before removal	NE
74	Rotunda	-	Brick set into pit- pre ex	S
75	Rotunda	-	Brick set into pit- after half section	SE
76	Rotunda	-	Pit after removal of brick	SE
77	Rotunda	-	General of gully on to made ground/ 037	E
78	Rotunda	-	General of gully on to blaes	NE
79	Rotunda	-	Working shot- digging gully	SW
80	Rotunda	-	General of digging/backfilled gullies	NE
81	Rotunda	-	General of stones- on pallets/covered	NE
82	Rotunda	-	General of S area before gravelled	NW
83	Rotunda	-	General of SW area before gravelled	NE
84	Rotunda	-	Concrete foundation after trowel clean	NE
85	Rotunda	-	Concrete foundation after trowel clean	NW
86	Rotunda	-	Concrete foundation after trowel clean	SE
87	Rotunda	-	Concrete foundation after trowel clean	SW
88	Rotunda	-	Piece of removed concrete showing where CBM was stuck	-
89	Rotunda	-	Mid ex of concrete 052 showing CBM	N
90	Rotunda	-	Mid ex of concrete 052 showing CBM	NE
91	Rotunda	-	Mid ex of concrete 052 showing CBM	N
92	Rotunda	-	Mid ex of concrete 052 showing CBM- working shot with Dougie	N
93	Rotunda	SF12	CBM in situ beneath 052	W
94	Rotunda	053-057	After removal of concrete 052	NE
95	Rotunda	053-057	After removal of concrete 052	N
96	Rotunda	053-057	After removal of concrete 052	S
97	Rotunda	037/057/054	E facing section at S side of feature	E
98	Rotunda	-	Waterlogged Bore stone setting	SE
99	Rotunda	-	Below concrete 052- pre ex	E
100	Rotunda	-	Below concrete 052- pre ex	S
101	Rotunda	-	Continuing external soak away	SE
102	Rotunda	-	Topsoil onto subsoil- section of soak away	
103	Rotunda	-	Interior gully- onto blaes	E
104	Rotunda	-	Interior gully- onto blaes	SE
105	Rotunda	-	Interior gully- onto blaes	E
106	Rotunda	-	Stone pit under Bore stone setting pre ex	E
107	Rotunda	-	Stone pit under Bore stone setting pre ex	SE
108	Rotunda	-	Stone pit too waterlogged to continue	NE
109	Rotunda	-	Stone pit too waterlogged to continue	N
110	Rotunda	-	Stone pit too waterlogged to continue	NE

Frame	Area	Context No.	Subject	Taken from
111	Rotunda	-	Mid ex of pit showing 062	NE
112	Rotunda	-	Mid ex of pit showing 062	NE
113	Rotunda	-	Mid ex of pit showing 062- showing waterlogging	E
114	Rotunda	-	General showing pit location/waterlogging	SE
115	Rotunda	-	Showing waterlogging of feature	E
116	Rotunda	-	Area of drainage channel to lead	SW
117	Rotunda	-	Area of drainage channel to lead	S
118	Rotunda	-	Digging gully to drain site	E
119	Rotunda	-	Digging gully to drain site	E
120	Rotunda	-	Digging gully to drain site	E
121	Rotunda	-	General of flooded site	SE
122	Rotunda	062/063/059	Mid ex of pit showing stones 063	E
123	Rotunda	062/063/059	General of pit mid ex	NE
124	Rotunda	062/063/059	General of pit mid ex	NNE
125	Rotunda	062/063/059	Mid ex of pit- detail	NNE
126	Rotunda	062/063/059	Mid ex of pit	NE
127	Rotunda	062/063/059	Mid ex of pit further stones	NNE
128	Rotunda	062/063/059	Mid ex of pit further stones	NW
129	Rotunda	062/063/059	Mid ex of pit further stones	SW
130	Rotunda	062/063/059	Mid ex of pit further stones	NNE
131	Rotunda	062/063/059	Showing SF19 in situ	N
132	Rotunda	062/063/059	Showing SF19 and 20 in situ	NNE
133	Rotunda	062/063/059	Mid ex of pit before removal of last stones	NNE
134	Rotunda	062/063/059	Mid ex of pit before removal of last stones	NNE
135	Rotunda	062/063/059	Mid ex- half section complete	NNE
136	Rotunda	062/063/059	Mid ex- half section complete	SSW
137	Rotunda	062/063/059	General of pit- half section complete	NE
138	Rotunda	062/063/059	General of pit- half section complete	NNE
139	Rotunda	062/063/059	NNE facing section	NNE
140	Rotunda	062/063/059	NNE facing section	NNE
141	Rotunda	062/063/059	NNE facing section	NNE
142	Rotunda	062/063/059	Mid ex showing further stones	NNE
143	Rotunda	062/063/059	Mid ex showing further stones	NE
144	Rotunda	062/063/059	Mid ex showing further stones	W
145	Rotunda	062/063/059	Mid ex showing further stones	SSW
146	Rotunda	062/063/059	Mid ex showing further stones	S
147	Rotunda	062/063/059	Mid ex showing further stones	NNE
148	Rotunda	062/063/059	Mid ex showing further stones	NE
149	Rotunda	062/063/059	Mid ex showing further stones	SSW
150	Rotunda	062/063/059	Mid ex showing further stones (with shade)	SSW
151	Rotunda	062/063/059	Before removal of final stones	SSW
152	Rotunda	062/063/059	Before removal of final stones	SSW
153	Rotunda	062/063/059	Before removal of final stones	E
154	Rotunda	062	Post ex of pit	NNE
155	Rotunda	062	Post ex of pit	NE
156	Rotunda	062	Post ex of pit	SSW
157	Rotunda	062	Post ex of pit	SSW
158	Rotunda	062	Post ex of pit	W
159	Rotunda	062	Post ex of pit (with shade)	W
160	Rotunda	062	Post ex of pit	W
161	Rotunda	054/056/061/064	Before half section across feature	S
162	Rotunda	054/056/061/064	Before half section across feature	NNE
163	Rotunda	054/056/061/064	Before half section across feature	NE
164	Rotunda	054/056/061/064	Before half section across feature	SW

Frame	Area	Context No.	Subject	Taken from
165	Rotunda	054/056/061/064	Showing detail of [064]/ 054 at E side- truncated	SE
166	Rotunda	054/056/061/064	Detail of stones on NE side	NWW
167	Rotunda	054/056/061/064	Detail of stones on NE side	NNE
168	Rotunda	054/056/061/064	Detail of stones on NE side	E
169	Rotunda	054/056/061/064	Detail of stones on NE side	NE
170	Rotunda	054/056/061/064	Half section removedd on to (061)	SE
171	Rotunda	054/056/061/064	Half section removedd on to (061)	SSW
172	Rotunda	054/056/061/064	Detail of likely rodent holes in (061)	SSW
173	Rotunda	-	After removal of (061) showing subsoil	SW
174	Rotunda	-	After removal of (061) showing subsoil	SW
175	Rotunda	-	After removal of (061) showing subsoil	WNW
176	Rotunda	-	After removal of (061) showing subsoil	-
177	Rotunda	060/064/056/061/054	ESE facing section across bore stone setting after concrete removal- NNE extent	ESE
178	Rotunda	060/064/056/061/054	ESE facing section across bore stone setting after concrete removal- mid extent	ESE
179	Rotunda	060/064/056/061/054	ESE facing section across bore stone setting after concrete removal- SSW extent	ESE
180	Rotunda	060/064/056/061/054	ESE facing section across bore stone setting after concrete removal- SSW extent	ESE
181	Rotunda	060/064/056/061/054	ESE facing section across bore stone setting after concrete removal- NNE extent	ESE
182	Rotunda	056/061	Section below anchor 8- W facing	W
183	Rotunda	061/056/071	Section below anchor 1- NNE facing	NNE
184	Rotunda	060/064/056/061/071	SSW extent of feature section	ESE
185	Rotunda	-	General of drainage gully dug in subsoil	N
186	Rotunda	-	General of drainage gully dug in subsoil	SE
187	Rotunda	068/069	Post-ex of possible stakehole	WSW
188	Rotunda	037/064/054	Water gathered on possible linear feature	E
189	Rotunda	070/054/064	Further cobbles in fill of foundation cut	NNE
190	Rotunda	070/054/064	Further cobbles in fill of foundation cut	NE
191	Rotunda	070/054/064	Further cobbles in fill of foundation cut	NE
192	Rotunda	070/054/064	Further cobbles in fill of foundation cut	SE
193	Rotunda	064	Post ex of foundation cut	-
194	Rotunda	-	General of hand digging around water pipe	NNE
195	Rotunda	064	Post ex of foundation cut	-
196	Rotunda	-	Area stripped- showing edge of pipe ditch/light deposit	NNE
197	Rotunda	-	Showing irregular light deposit in section	SE
198	Rotunda	064	Post ex of foundation cut [064]	NNE
199	Rotunda	064	Post ex of foundation cut [064]	NE
200	Rotunda	064	Post ex of foundation cut [064]	SSW
201	Rotunda	064	Post ex of foundation cut [064]	E
202	Rotunda	064/037	Post ex of foundation feature	SW
203	Rotunda	064/037	Post ex of foundation feature	SSW
204	Rotunda	064/037	Post ex of foundation feature	NNE
205	Rotunda	-	Pre ex of possible linear feature	E
206	Rotunda	072/073/061	ESE facing section of [064] showing surroundign deposits	ESE
207	Rotunda	072/073/061	ESE facing section of [064] showing surroundign deposits	ESE
208	Rotunda	071/056	NNE section below anchor 1 showing made ground	NNE
209	Rotunda	071/056	NNE section below anchor 1 showing made ground	NNE
210	Rotunda	072/073/061	SSW section of slot beyong [064]	SSW
211	Rotunda	072/073/061	SSW section of slot beyong [064]	SSW
212	Rotunda	-	Post ex of slot through voided linear natural feature	ESE
213	Rotunda	064/054/070/056/061	Foundation cut below anchor 8	SSW
214	Rotunda	064/054/070/056/061	Foundation cut below anchor 8	SSW

File 4

Frame	Area	Context No.	Subject	Taken from
1	Rotunda	-	ID shot	-
2	Rotunda	-	E facing section in trench for drain outside anchor points	E
3	Rotunda	-	N facing section in trench for drain outside anchor points	N
4	Rotunda	-	Star anchor point 2 section down to subsoil 037	NE
5	Rotunda	-	Star anchor point 2 section down to subsoil 037	NW
6	Rotunda	-	Star anchor point 2 overhead showing new anchor in star	SW
7	Rotunda	-	Star anchor point 3 E facing section to subsoil 037	E
8	Rotunda	-	Star anchor point 3 S facing section to subsoil 037	S
9	Rotunda	-	Star anchor point 3 overhead detail of star and anchor loop and crack	W
10	Rotunda	-	Star anchor point 4 SE facing section to subsoil 037	SE
11	Rotunda	-	Star anchor point 4 SW facing section to subsoil 037	SW
12	Rotunda	-	Star anchor point 4 overhead detail of star and anchor loop and crack	NW
13	Rotunda	-	Detail of anchor chain links in star point 4	SW
14	Rotunda	-	Bore hole plinth after removing 4 surrounding stone blocks	E
15	Rotunda	-	Bore hole plinth after removing 4 surrounding stone blocks	S
16	Rotunda	-	Bore hole plinth after removing 4 surrounding stone blocks	W
17	Rotunda	-	Bore hole plinth after removing 4 surrounding stone blocks	N
18	Rotunda	-	Stake into 037 to east of flag pole	W
19	Rotunda	-	Stake into 037 to east of flag pole	N
20	Rotunda	-	Removal of last larger concrete pieces of bore stone surround	SW
21	Rotunda	-	Removal of last larger concrete pieces of bore stone surround	SW
22	Rotunda	-	Upper layer of drain to south of Rotunda- removal	E
23	Rotunda	-	Section (S facing) in drain channel south of Rotunda	S
24	Rotunda	-	General shot showing location of new soak-away S of Rotunda	S
25	Rotunda	-	General shot of soak-away digging shot	W
26	Rotunda	-	S facing section of soak-away including ceramic field drain	S
27	Rotunda	-	General shot of east extension of soak-away	S
28	Rotunda	-	S and E facing sections of soak-away at SE corner	SE
29	Rotunda	-	General shot- limit of excavation on 18/04/13	SE
30	Rotunda	-	General shot- back fill and pipe at SE corner of soak-away	SE
31	Rotunda	-	General view of pipe trench	S
32	Rotunda	-	General view of pipe trench showing disturbed ground 6m south of Rotunda	S
33	Rotunda	066	Tarmac forming buried road	N
34	Rotunda	066	Tarmac forming buried road	N
35	Rotunda	066	Tarmac forming buried road	N
36	Rotunda	066	General view tarmac/old road and water main inside Rotunda	N
37	Rotunda	066	General view tarmac/old road and water main inside Rotunda	N
38	Rotunda	065/066	East facing section through old road	E
39	Rotunda	065/066	General view internal pipe trench S side of Rotunda	E

File 5

Frame	Area	Context No.	Subject	Taken from
1	-	-	ID shot	-
2	SE of site	-	Area of wall foundation in location context	N
3	SE of site	-	Pre ex of wall foundation slot	NNW
4	SE of site	030/042/074	West facing section of trench	SW
5	SE of site	074	Post ex view of trench	N
6	Roundabout at hotel	-	Pre ex view of roundabout	E
7	Roundabout at hotel	-	Roundabout in location context	SE
8	Roundabout at hotel	-	Removing brick and plints concrete	E

Frame	Area	Context No.	Subject	Taken from
9	Roundabout at hotel	-	Pre ex of former planting	W
10	Roundabout at hotel	074	Post ex of roundabout	N
11	Roundabout at hotel	074	Post ex of roundabout	NE
12	Roundabout at hotel	074	Post ex of roundabout	NW
13	Roundabout at hotel	-	Mid ex view of traffic island	E
14	Roundabout at hotel	-	Post ex view of traffic island	E
15	Rotunda	-	Pre ex view of drain cut	NE
16	Rotunda	-	Drain cut in location context	NW
17	Rotunda	-	Post ex: East drain section	SW
18	Rotunda	-	SE facing section of drain cut	S
19	Rotunda	-	Post ex: central section of drain cut	E
20	Rotunda	-	Gully drain trench at S entrance to Rotunda	S
21	Rotunda	065	AREa of made ground reduced to formation level for sets to S of Rotunda	NW
22	Rotunda	036	Pipe trench SE end Rotunda	S
23	Rotunda	036	General view showing make up below tarmac track to Rotunda	W
24	Rotunda	036	General view showing make up below tarmac footpath to Rotunda	E
25	Rotunda	036	General view footpath to statue pre ex	SE
26	Rotunda	066	Road visible to N of Rotunda	N
27	Rotunda	036	General view forming footpath Rotunda to statue	N

## File 6

Frame	Area	Context No.	Subject	Taken from
1	Rotunda	-	ID shot	-
2	Rotunda	034/036	General view reforming access footpath to E of Rotunda	W
3	Rotunda	034/036/037	Forming new footpath from Rotunda to Bruce stature	SW
4	Rotunda	-	Made ground W end access path SE side of Rotunda	W
5	Rotunda	037	Footpath formation level Rotunda to Bruce statue	S
6	Rotunda	065	Made ground 065 in access path trench SE side of Rotunda	S
7	Rotunda	-	Footpath Rotunda- Bruce statue scaled with type 1	N
8	Rotunda	037/065	Footpath trench to SE Rotunda	E
9	Rotunda	075/076	Pit cut pre ex	S
10	Rotunda	075/076	Pit cut pre ex	S
11	Rotunda	077/078	Pit cut pre ex	S
12	Rotunda	077/078	Pit cut pre ex	S
13	Rotunda	075/077	Pit cuts pre ex	S
14	Rotunda	075	Pit N facing section	N
15	Rotunda	075	Pit N facing section	N
16	Rotunda	075	General location shot	N
17	Rotunda	077	Pit cut S facing section	S
18	Car park	039/040/042	General view pipe trench below walkway S of car park	E
19	Car park	032/033/039/040/042	General view showing sequence of deposits in pipe trench below walkway S of car park	E
20	-	001/025	General view service trench	N
21	-	032/040	Deposits in S facing section central part of walkway pipe trench	S
22	-	-	Deposits in N facing section central part of walkway pipe trench deposits associated with attenuation tank trench	N
23	-	001/002	Deposits N facing section W-E half of pipe trench	W
24	-	-	Post ex of pipe trench	S
25	-	039/032/033	Deposits in S facing section W-E half of pipe trench	S
26	-	-	Section showing deposits in pipe trench	-



File 7

Frame	Area	Context No.	Subject	Taken from
1	-	-	ID shot	-
2	-	040/033/025	Made ground deposit 025 towards site of old visitor centre in W -E section of pipe trench under road	S
3	Car park (south R.)	-	E-W section of pipe trench	E
4	Car park (south R.)	-	W-E section of pipe trench	W
5	Car park (south R.)	-	General view pipe trench and new visitor centre	ESE
6	Car park (south R.)	-	General view lifting tar and make up E end pipe trench	W
7	-	-	Linking trench across kerb	-
8	-	-	Linking trench across kerb	-
9	-	-	Completed pipe trench to road	-
10	-	-	Section with cable	-
11	-	-	Pipe trench to pavement	-
12	-	-	Pipe trench across car park	-
13	-	-	Pipe trench looking to road	-
14	-	-	Pipe trench cable	-
15	-	-	Pipe trench	-
16	-	-	Section by concrete foundation	-
17	-	-	2m by 2m 'box' by pavement	-
18	Car park	-	Working: area where trench being hand dug	N
19	Car park	-	Start of hand dug trench north end	E
20	Car park	-	Working shot: down to level of tapes, N end	W
21	Car park	021/032	Working: W facing side of trench	W
22	Car park	021/032	Northerly terminus of trench- site of fire hydrant	SW
23	Car park	021/032	Northerly terminus of trench- site of fire hydrant	SW
24	Car park	-	Initial tentative machining of S end of trench	N
25	Car park	021/032/033	W facing section of trench- South end	W
26	Car park	021/032/033	Working: completed southern section of trench	N
27	Car park	021/032/033	Completed southern end of trench	N
28	Car park	021/032	Cautiously detouring round bulk of concrete slab	N
29	Car park	021/032	After removal of concrete slab	N

File 8

Frame	Area	Context No.	Subject	Taken from
1	-	-	ID shot	
2	-	-	General at internal rotunda	N
3	-	-	General at internal rotunda	N
4	-	-	Covered Bruce statue	E
5	-	-	General of site	SE
6	-	-	General of site	SE
7	-	-	Borestone position- cement mixer	N
8	-	-	Borestone position- cement mixer	E
9	-	-	Borestone position- cement mixer	E
10	-	Statue	Robert the Bruce close ups	-
11	-	Statue	Robert the Bruce close ups	-
12	-	Statue	Robert the Bruce close ups	-
13	-	Statue	Robert the Bruce close ups	-
14	-	Statue	Robert the Bruce close ups	-
15	-	Statue	Robert the Bruce close ups	-
16	-	Statue	Robert the Bruce close ups	-
17	-	Statue	Robert the Bruce close ups	-
18	-	Statue	Robert the Bruce close ups	-

Frame	Area	Context No.	Subject	Taken from
19	-	Statue	Robert the Bruce close ups	-
20	-	Statue	Robert the Bruce close ups	-
21	Rotunda	-	Gully- northern perimeter (inner) rotunda	S
22	Rotunda	-	Gully- inner perimeter of rotunda- down to red blaes level	S
23	Rotunda	-	Gully- inner perimeter of rotunda- down to red blaes level	S
24	Rotunda	-	Grading of area SW of rotunda	S
25	Rotunda	-	Grading of area SW of rotunda	S
26	Rotunda	-	Gully northern perimeter (inner) rotunda- pipe in	S
27	Rotunda	-	Gully northern perimeter (inner) rotunda- gravel going over pipe	S
28	Rotunda	-	Proposed drainage to north of visitor building	W
29	Rotunda	-	Proposed drainage to north of visitor building	E
30	Rotunda	-	Gully- inner north perimeter of rotunda- cement laid	S
31	Rotunda	-	SE corner of rotunda- exterior drainage	W
32	Rotunda	-	SE corner of rotunda- exterior drainage	W
33	Rotunda	-	SE corner of rotunda- exterior drainage	W
34	Rotunda	-	SE corner of rotunda- exterior drainage	W
35	Rotunda	-	SE corner of rotunda- exterior drainage	NE
36	Rotunda	-	SE corner of rotunda- exterior drainage	W
37	Rotunda	-	SE corner of rotunda- exterior drainage	W

File 9

Frame	Area	Context No.	Subject	Taken from
1	-	-	ID shot	
2	Rotunda	-	E exterior rotunda drainage gully	N
3	Rotunda	-	E exterior rotunda drainage gully	S
4	Rotunda	-	E exterior rotunda drainage gully- concrete in	SE
5	Rotunda	-	E exterior rotunda drainage gully- concrete in	E
6	Rotunda	-	N perimeter kerbing line	W
7	Rotunda	-	N perimeter kerbing line	W
8	Rotunda	-	N perimeter kerbing line	E
9	Visitor centre	-	Wall foundation- NE corner of centre	N
10	Visitor centre	-	Wall foundation- visitor centre behind	N
11	Visitor centre	-	Wall foundation where it meets path to East	N
12	Visitor centre	-	Wall foundation- NE of visitor centre dug into already exposed subsoil	W
13	Visitor centre	-	Wall foundation- NE of visitor centre dug into already exposed subsoil	W
14	Visitor centre	-	Wall foundation- western half cutting into tarmac (not dug here before)	W
15	Visitor centre	-	Wall foundation- eastern half cutting into tarmac- black deposits exposed	W
16	Visitor centre	-	Wall foundation eastern half cut through tarmac, subsoil getting exposed	W
17	Visitor centre	-	Wall foundation eastern half cut through tarmac, subsoil getting exposed	W
18	Visitor centre	-	Wall foundation eastern half cut through tarmac, subsoil getting exposed	W
19	Visitor centre	-	Wall foundation eastern half cut through tarmac, subsoil getting exposed	W
20	Visitor centre	-	Wall foundation eastern half cut through tarmac, subsoil getting exposed	W
21	Visitor centre	-	Wall foundation eastern half cut through tarmac, subsoil getting exposed	W
22	Visitor centre	-	Wall foundation- cut through tarmac, subsoil exposed	NW
23	Visitor centre	-	View to rotunda from spoil to N of visitor centre	S
24	Visitor centre	-	View to visitor centre from spoil	N
25	Visitor centre	-	View to visitor centre/compound from spoil	NE

Frame	Area	Context No.	Subject	Taken from
26	Rotunda	-	N perimeter kerb line	NE
27	Visitor centre	-	General of area north of visitor centre	W

File 10

Frame	Area	Context No.	Subject	Taken from
1	-	-	ID shot	-
2	Immediately west of visitor centre	081-085	Stratigraphy	E
3	Immediately west of visitor centre	081-085	First area to be levelled, pre ex	S
4	NE corner outside visitor centre		Second area to be levelled, pre ex	N
5	West of visitor centre	081-085	Working: about to start stripping	SW
6	West of visitor centre	081-085	Working: stripping	S
7	West of visitor centre	081-085	Working: exposing field drains cut into subsoil	SE
8	West of visitor centre	085	Field drain	S
9	West of visitor centre	085/086	Stratigraphy of grassy strip between old car park and path	S
10	West of visitor centre	081-085	Location of old evaluation trench	W
11	West of visitor centre	081-086	Working: completed stripping up to edge of grass strip	S
12	West of visitor centre	086	After removal of aggregate on grassy strip	S
13	West of visitor centre	086/085	Continuing stripping- field drain visible	S
14	West of visitor centre	086/085	Working: field drains	SE
15	West of visitor centre	086	Last bit of first area stripped	S
16	West of visitor centre	086/085	Widening the excavation in first area	E
17	West of visitor centre	086/085	Working: continued stripping, showing drain and bench footing	E
18	West of visitor centre	081-086	First area after stripping and covering	S
19	NE of new visitor centre	086	Working: second area about to be stripped	S
20	NE of new visitor centre	086	Encountering unexpected services	S
21	NE of new visitor centre	086/085	Starting to expose subsoil	S
22	NE of new visitor centre	086/085	Rubble field drain crossing stripped area	SW
23	NE of new visitor centre	085/087	Possible feature	SE
24	NE of new visitor centre	085/087	SE facing section through modern pit feature	SE
25	NE of new visitor centre	086/085	Final bit of stripping in second area	S
26	NE of new visitor centre	086/085	Overall area stripped 7/06/13	S
27	NE of new visitor centre	086/085/089	Stratigraphy of area	E
28	Rotunda	-	Working shot	N
29	Rotunda	-	Working shot	N
30	Rotunda	-	Working shot	N
31	Rotunda	-	Working shot	S
32	Rotunda	-	Working shot	N
33	Walkway to Rotunda	-	Trench post ex	NW
34	Walkway to Rotunda	-	Trench post ex	NW
35	Walkway to Rotunda	-	Trench post ex	NW
36	Walkway to Rotunda	-	Trench post ex	NW
37	Walkway to Rotunda	-	Trench post ex	NW
38	Walkway to Rotunda	-	Section through trench	-
39	Walkway to Rotunda	-	Section through trench	-
40	Walkway to Rotunda	-	Working shot	NW
41	E of new visitor centre	-	S facing section of trench	S
42	E of new visitor centre	-	Trench post ex	S
43	E of new visitor centre	-	E facing section of trench	E
44	E of new visitor centre	-	Trench post ex	S
45	New pathway next to Rotunda	-	Gradient showing SW section	SW

Frame	Area	Context No.	Subject	Taken from
46	New pathway next to Rotunda	-	Gradient post ex	NE
47	New pathway next to Rotunda	-	Gradient post ex	N
48	E of new visitor centre	-	Post ex of trench	S
49	W of compound	-	Area where animal bone was found	N
50	W of compound	-	Area where animal bone was found	W

### Black and White

Frame	Area	Context No.	Subject	Taken from
1	Temporary site	(003),(004)	Charcoal feature pre-ex	SE
2	Temporary site	(003),(004)	Charcoal feature pre-ex	S
3	Temporary site	-	ID shot	-
4	Temporary site	(003),(005)	SW facing section	SW
5	Temporary site	(004),(006)	NE facing section	NE
6	Temporary site	-	Features post-ex	SE
7	SW of centre road	(012),(013)	Linear stone feature	NE
8	SW of centre road	(012),(013)	Linear stone feature	N
9	SW of centre road	(012),(013)	N facing section - pre ex	N

### Appendix G: Discovery and Excavation in Scotland

LOCAL AUTHORITY:	Stirling
PROJECT TITLE/SITE NAME:	Bannockburn Visitor centre
PROJECT CODE:	3554
PARISH:	St Ninians
NAME OF CONTRIBUTOR(S):	Iraia Arabaolaza
NAME OF ORGANISATION:	Guard Archaeology Ltd
TYPE(S) OF PROJECT:	Watching brief
NMRS NO(S):	NS79SE15.02
SITE/MONUMENT TYPE(S):	A-listed monument including the rotunda, memorial cairn, flagpole and statue of King Robert I
SIGNIFICANT FINDS:	Several pits; two of them with bone, the bore stone setting, four linear features and a possible stake hole
NGR (2 letters, 6 figures)	NS796906
START DATE (this season)	9th July 2012
END DATE (this season)	28th June 2013
PREVIOUS WORK (incl. DES ref.)	Submitted to DES 2011: GUARD 3357;DES 2012:GUARD 3438, 3520,3541
MAIN (NARRATIVE) DESCRIPTION: (May include information from other fields)	GUARD Archaeology Limited was commissioned by the National Trust for Scotland to undertake an archaeological watching brief during the construction of a new visitor centre at Bannockburn. This work was undertaken between 9th July 2012 and 28th June 2013 revealed several pits; two of them with bone, the bore stone setting, four linear features and a possible stake hole.
PROPOSED FUTURE WORK:	None
SPONSOR OR FUNDING BODY:	National Trust for Scotland
CAPTION(S) FOR ILLUSTRS:	--
ADDRESS OF MAIN CONTRIBUTOR:	52 Elderpark Workspace, 100 Elderpark Street, Glasgow, G51 3TR
EMAIL ADDRESS:	Iraia.arabaolaza@guard-archaeology.co.uk
ARCHIVE LOCATION (intended/deposited)	Archive to be deposited in NMRS

**Appendix H: Project Design/WSI**

**GUARD 3554: Bannockburn Visitor centre  
Watching Brief Method Statement**

**1.0 Introduction**

- 1.1 This document sets out GUARD Archaeology's watching brief methodology and is provided as a method statement for the watching brief of all ground-works associated with the construction of the new Bannockburn Visitor Centre (Figure 1).
- 1.2 On completion of all investigations, a report to data structure level and an accompanying post-excavation research design (PERD) and costing, if required, will be submitted for agreement with the National Trust for Scotland. The PERD will also outline arrangements for final publication of the archaeological results.

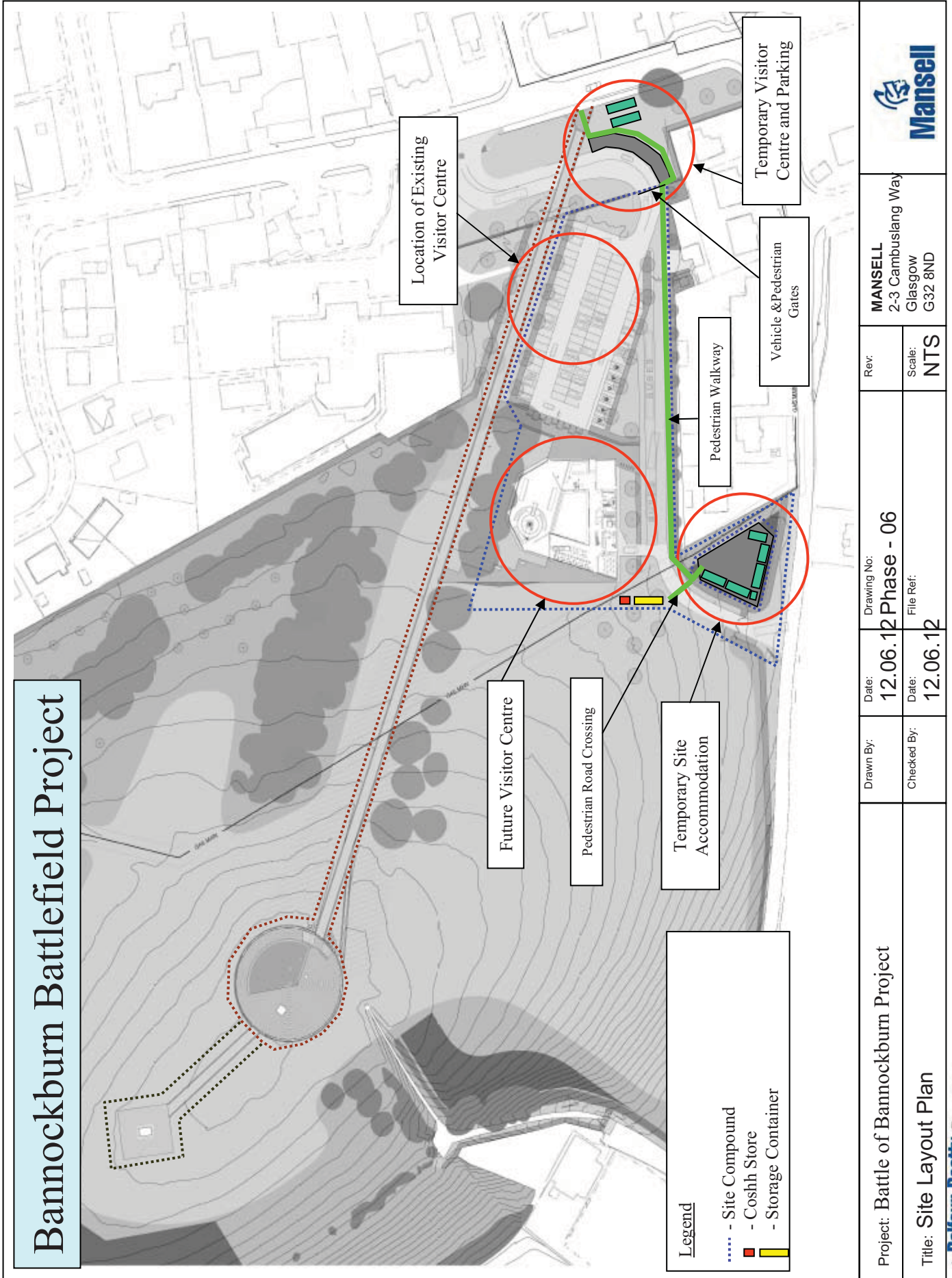
**2.0 Aims and Objectives**

- 2.1 The aims and objectives of archaeological trenching are as follows:
- establish the presence or absence of any archaeological remains, and their character, date and extent if surviving.
  - determine the character, extent and significance of any archaeological deposits encountered at the site.
  - excavate and record any significant features and recover any significant artefacts and ecofacts for subsequent analysis.

**3.0 Methodology**

- 3.1 The strategy to be employed during the watching brief will consist of the following:
- One GUARD archaeologist will be present during all ground-works associated with the construction of the new Bannockburn Visitor Centre.
  - The initial watching brief will involve monitoring the removal of tarmac and topsoil for a compound area in the vicinity of the current visitor centre. This watching brief will continue throughout the construction process for approximately 12 months.
  - With the exception of the removing of tarmac layers, all machine excavation will be conducted using a smooth-edged bucket under the constant supervision of the on-site archaeologist.
  - Public access to the watching brief areas will be restricted to reduce the likelihood of accidents.
  - The topsoil will be removed in spits to the first archaeological horizon or, where none is found, to the natural subsoil. Any archaeological features encountered will be cleaned by hand to determine the date of the deposits, their character and extent. Such features will be recorded by written description on *pro forma* recording sheets, by photograph and by measured drawing.
  - All archaeological features encountered will be dealt with by the on-site archaeologists. Should negative-cut features be encountered they will be 50% sample excavated in order to determine their significance, date and function. In the event that they are deemed to be important discoveries, they will be fully excavated. Recording will include pro forma sheets, drawings and photographs.
  - All archaeological finds will be dealt with by the on-site archaeological team. The general practice will be to bulk recover all artefacts by context which date from the later phases of activity (e.g. modern waste materials). Should finds be encountered from the earlier occupation phases of the site they will be three-dimensionally recorded prior to up-lifting.
  - All excavated feature fills and horizons may be sampled for palaeo-environmental evidence. This will also include micromorphological sampling in order to address key issues on soil development at the site.

- All watching brief locations will be surveyed using a sub-centimetre or sub-metre GPS or total station EDM. This information will inform any further work that may be required.
- 3.2 On completion of the watching brief of all ground-works associated with the construction of the new Visitor Centre, a report suitable for submission to the Planning Authority will be produced. This report will be accompanied by the post-excavation research design and costing in order to bring the results forward for analysis and publication should this be required.
- 4.0 **Products**
- 4.1 The products of a programme of work will be:
- a data structure report, after completion of all fieldwork suitable for submission to the Planning Authority, the NMRS and the local Sites and Monuments Record;
  - a brief summary of results of the fieldwork will be submitted to *Discovery and Excavation in Scotland* and included within the OASIS online database;
  - Post-excavation research design (if applicable);
  - Preparation and disposal of the site archive and finds.
- 5.0 **Copyright**
- 5.1 Copyrights of the reports and all other information, including electronic information will rest with the client but the consultant will have the right to use the report and the survey results free of charge in relation to non-commercial activities or to promote its work.
- 6.0 **Archive Arrangements**
- 6.1 Once all fieldwork is completed, all materials from the programme of work will be prepared to the appropriate archive standard. GUARD Archaeology will undertake to deposit the resultant archive to the National Monuments Record for Scotland (NMRS) on completion of the report for publication.
- 6.2 All finds will be reported to the Treasure Trove Advisory Panel, and GUARD Archaeology will undertake to ensure their safe deposition within the designated museum at the appropriate time.
- 7.0 **Timetable**
- 7.1 Works will commence on site on Wednesday 4th July 2012 and will be continue until the completion of all ground-works associated with the construction of the new Bannockburn Visitor Centre. A draft data structure report will be submitted within two weeks of the completion date of the work.
- 8.0 **Staffing**
- 8.1 The watching brief will be conducted by GUARD Archaeology Limited experienced project staff.
- 9.0 **Health and Safety and Insurance**
- 9.1 All archaeological working practices will be subject to a risk assessment prior to commencement of the work where likely health and safety issues associated with the site will be highlighted.
- 9.2 GUARD Archaeology adheres to all standard Health and Safety regulations governing fieldwork projects. We also possess appropriate insurance cover, proof of which may be supplied upon request.



**Bannockburn Battlefield Project**

- Legend**
- Site Compound
  - Coshh Store
  - Storage Container

Project: Battle of Bannockburn Project		Rev:	<b>Mansell</b>	
Drawn By:	Date: 12.06.12	Drawing No:	2-3 Cambuslang Way	
Checked By:	Date: 12.06.12	File Ref:	Glasgow	
		Scale:	G32 8ND	
		NTS		

**GUARD Archaeology Limited  
52 Elderpark Workspace  
100 Elderpark Street  
Glasgow  
G51 3TR**

**Tel: 0141 445 8800**

**Fax: 0141 445 3222**

**email: [info@guard-archaeology.co.uk](mailto:info@guard-archaeology.co.uk)**



**[www.guard-archaeology.co.uk](http://www.guard-archaeology.co.uk)**