

# GUARD ARCHAEOLOGY



## Gleneagles Station Data Structure Report Project 3733

[www.guard-archaeology.co.uk](http://www.guard-archaeology.co.uk)

## **Gleneagles Station**

### **Data Structure Report**

**On behalf of:** Perth and Kinross Council

**NGR:** NN 927 101 (centred)

**Project Number:** 3733

**Report by:** Maureen C. Kilpatrick

**Illustrations:** Fiona Jackson

**Project Manager:** Bob Will

**Approved by:**



**Date:**

19/09/2013

*This document has been prepared in accordance  
with GUARD Archaeology Limited standard operating procedures.*

**GUARD Archaeology Limited**  
**52 Elderpark Workspace**  
**100 Elderpark Street**  
**Glasgow**  
**G51 3TR**

**Tel: 0141 445 8800**

**Fax: 0141 445 3222**

**email: [info@guard-archaeology.co.uk](mailto:info@guard-archaeology.co.uk)**



**[www.guard-archaeology.co.uk](http://www.guard-archaeology.co.uk)**

## Contents

Executive Summary	5
Introduction	5
Site Location, Topography and Geology	5
Archaeological Background	5
Aims and Objectives	6
Methodology	6
Results	7
Discussion	8
Recommendations	8
Acknowledgements	8
Appendices	10
Appendix A: Bibliography	10
Appendix B: Trench Details	10
Appendix C: List of Contexts	13
Appendix D: List of Samples	13
Appendix E: List of Drawings	13
Appendix F: List of Photographs	13
Appendix G: Discovery And Excavation Scotland Entry	16
Appendix H: Method Statement	17

## List of Figures

Figure 1: Site location	4
Figure 2: Trench layout	6

## List of Plates

Plate 1: View of field pre-excavation	5
Plate 2: West facing section of Trench 006	7
Plate 3: Post-excavation of Trench 018	7
Plate 4: Pre-excavation of charcoal spread 005 Trench 002	7

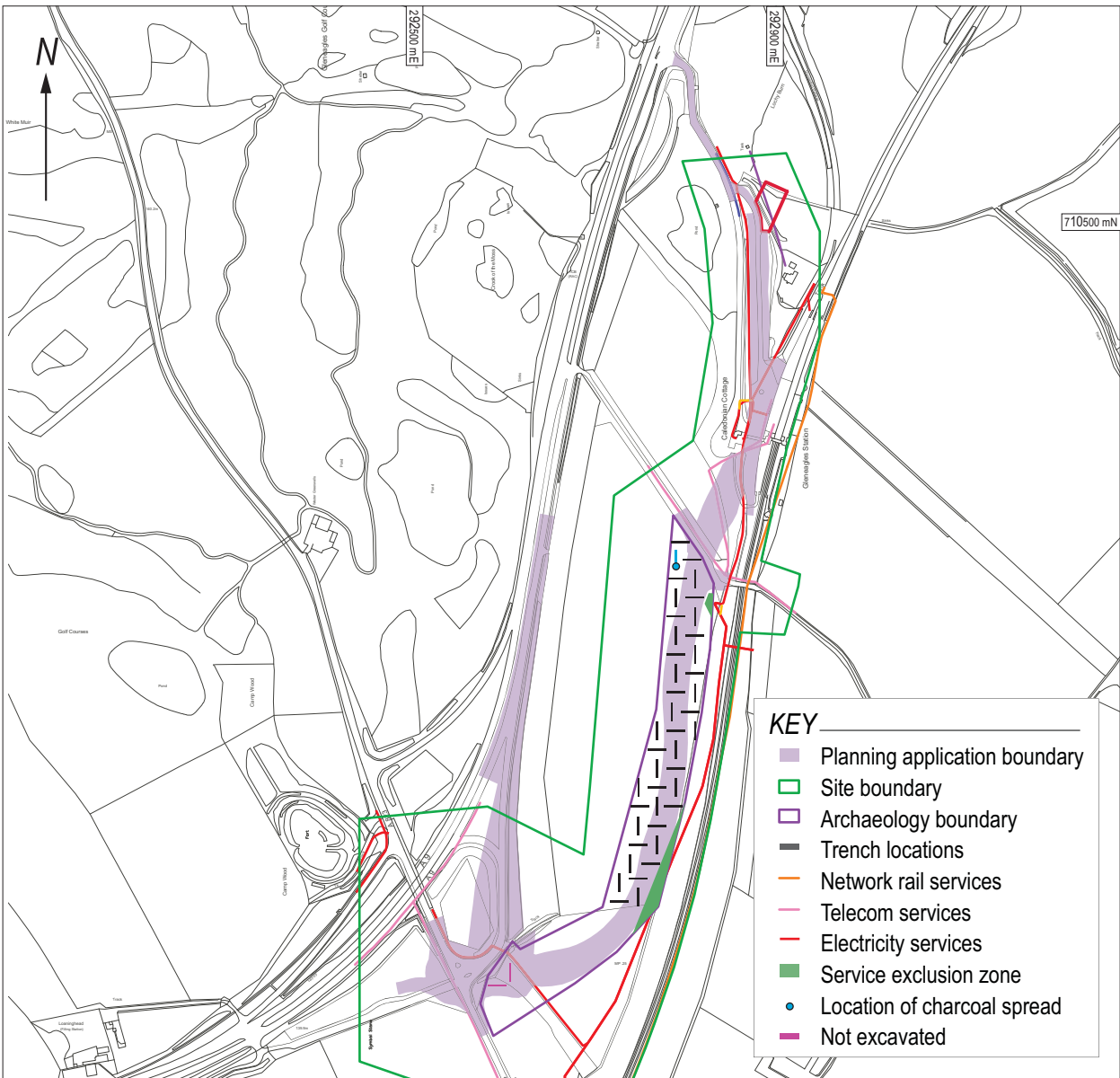
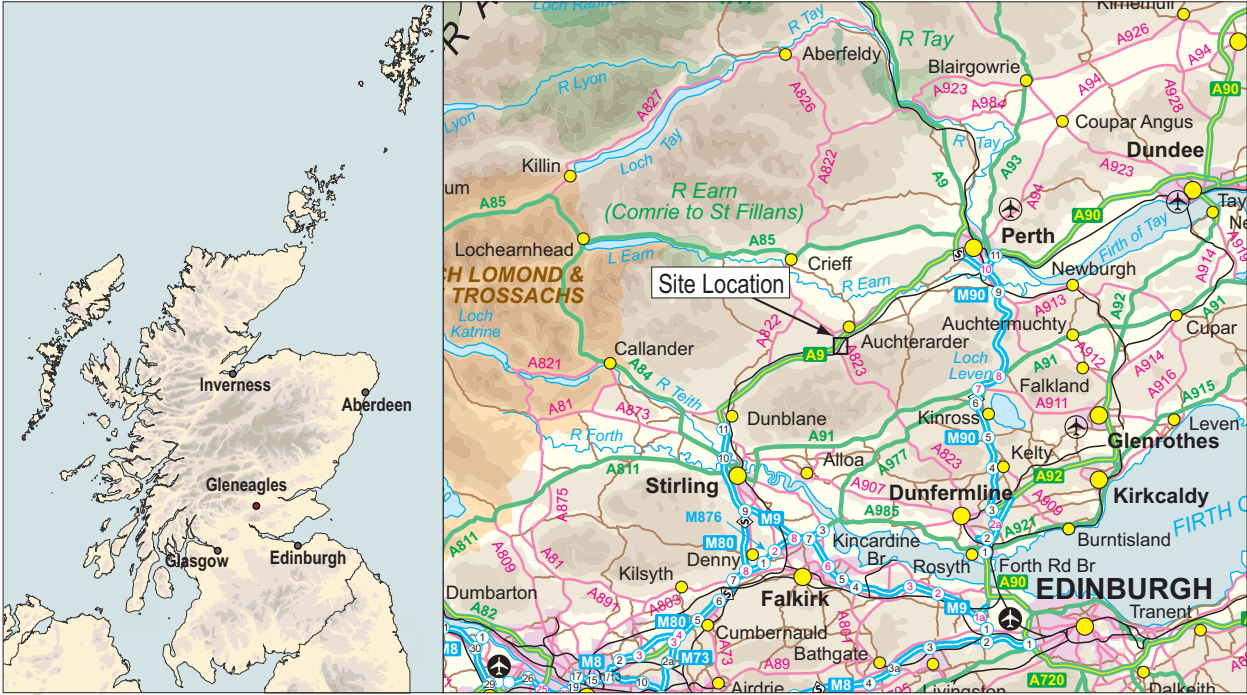


Figure 1:  
Proposed trench  
location.

0 200 m

Basemap provided by client. Reproduced by permission of Ordnance Survey on behalf of the Controller of Her Majesty's Stationery Office. All rights reserved. Licence number 100016971.

## Executive Summary

- 1.1 An archaeological evaluation was carried out by GUARD Archaeology Limited, working with CH2M Hill Halcrow on behalf of Perth and Kinross Council, on an area proposed for the construction of a new access road to the south of Gleneagles Railway Station. The trial trench evaluation sampled 6% of the total area proposed for development (3.4 ha). Only one significant archaeological feature was encountered during the evaluation. The work was undertaken between 26th August 2013 and 28th August 2013.

## Introduction

- 2.1 This report sets out the results of an archaeological evaluation undertaken by GUARD Archaeology Ltd working with CH2M Hill Halcrow on behalf of Perth and Kinross Council on a site proposed for the construction of a new access road to the immediate south of Gleneagles Railway Station (Plate 1). The work was carried out to satisfy planning condition 12/01679/FLL no.4 as stipulated by Perth and Kinross Council. This report complies with the methodology and scope of work detailed in a Method Statement prepared by GUARD Archaeology (Appendix H) and a Written Scheme of Investigation (WSI) produced by CH2M Hill Halcrow following consultation with the Perth and Kinross Heritage Trust. During the course of the evaluation a total of 1685 square metres of trenching was undertaken; spread over 42 individual trenches arranged in an interrupted grid pattern across the site.



*Plate 1: View of field pre-excavation.*

## Site Location, Topography and Geology

- 3.1 The proposed development location lies to the west of Gleneagles town and to the immediate south of Gleneagles Railway Station (NGR NN 927 101 centred). The development area covers approximately 3.4 hectares.
- 3.2 The site is bounded by a private access road to the north, the A9 road to the west, Stirling to Perth Railway Line to the east and the A823 road to the south, and currently consists of a fairly flat rectangular shaped field presently under grass (Figure 1). To the extreme south of the site is a wooded area, with a steeply sloping ridge that includes an area of recently felled trees adjacent to the A 823.
- 3.3 The underlying drift geology consists of Quaternary period glaciofluvial ice contact deposits of gravel, sand and silt, while the solid geology consists of Devonian Period Sherriffmuir Sandstone member (British Geological Survey 1:50,000 <http://mapapps.bgs.ac.uk/geologyofbritain/home.html>).

## Archaeological Background

- 4.1 A review of desk-based sources undertaken in advance of the trenching (Halcrow 2013) revealed an area with a rich cultural heritage. A total of eight known scheduled ancient monuments are located within 2 kilometres of Gleneagles Railway Station. These include the inscribed

Pictish symbol stone of Loaninghead (NMRS No. NN90NW 3) located 270m to the east and the enclosure sites of Millhill and Peterhead (Perth and Kinross No. MPK1287) to the SW and NNE respectively. The later prehistoric Loaninghead Fort (Perth and Kinross No. MPK1270) is located 350m NE while the medieval tower and earthworks of Gleneagles Castle (Perth and Kinross No. MPK1272) are located to the south. Further non-designated sites include the discovery of long cists and a possible square barrow at Peterhead (Perth and Kinross Nos. MPK18243 and 17440) and a cist at Barns Farm to the south of the site (NMRS No. NN90NW 16) although none of the above sites are located within the development boundary.

## Aims and Objectives

5.1 The aims and objectives of the archaeological work were to:

- establish the presence or absence of archaeological resources within the area of development under targeted archaeological evaluation conditions
- determine the character, extent and significance of any archaeological deposits encountered;
- excavate and record any significant archaeological remains should they be encountered;
- undertake funded post-excavation analysis and publication of the results on the archaeological works should they be warranted.

## Methodology



Figure 2:  
Trench layout.

- 6.1 Topsoil was stripped using a mechanical excavator, fitted with a flat-bladed ditching bucket, under close archaeological supervision. The topsoil was removed in linear trenches to the surface of the subsoil or the first significant archaeological horizon. The trenches were approximately 20 metres long by two metres wide. Trenches were located to provide a 6% sample (1680 square metres) of the accessible part of development area and were arranged in an interrupted grid pattern (Figure 2). The southern portion of the development corridor consists of a conifer plantation and was excluded from the evaluation.
- 6.2 All on-site recording, written, drawn and photographic, was to the standards normally pertaining in archaeological fieldwork and to the terms set out in the CH2M Hill Halcrow WSI. Trenches were surveyed and located within the National Grid using a sub-centimetre DGPS. Weather conditions for the evaluation were good with dry, sunny weather.

## Results



Plate 2: West facing section of Trench 006.



Plate 3: Post-excavation of Trench 018.

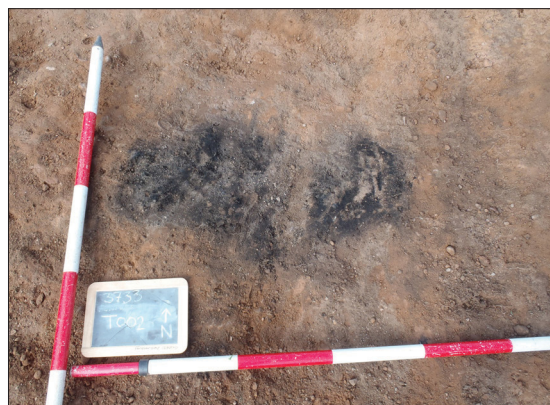


Plate 4: Pre-excavation of charcoal spread 005 Trench 002.

- 7.1 During the course of the evaluation only one feature of potential archaeological significance was encountered. 42 trenches were excavated, totalling 1685 square metres, the results of which are set out in Appendix B. For the majority of the area trenches revealed a reddish-brown sand silt topsoil 001 (0.28 to 0.45 m deep) with inclusions of sub-rounded pebbles and fine grass roots, which lay over a natural subsoil which varied from an orange-brown sand and gravel 002 to a reddish-brown gravel sand 004 (Plates 2 and 3). Within the central area of the site and overlying the subsoil was found an intermediate deposit between 0.13 m and 0.31 m thick consisting of mid-brown sand silt 003 with occasional sub-rounded pebble inclusions.

- 7.2 Following discussions with the Perth and Kinross Heritage Trust the two proposed trenches located to the south of the present field and adjacent to the A823 and round-about were not excavated due to the highly disturbed nature of the ground where woodland had recently been felled and cleared.

#### Possible Archaeological feature in Trench Two

- 7.3 The southern end of trench two contained the only archaeological feature encountered during the field evaluation. The feature consisted of a small oval shaped spread of charcoal which measured 0.78 x 0.35 m and on excavation was very shallow only 0.03m deep. No obvious cut was identified and it was interpreted as a small spread of charcoal within a fine grained brown-black silt 005 (Plate 4). No finds were encountered within the fill and its date remains unknown. As the feature was located next to the trench edge the trench was widened by 2.5m by 2m at this point to reveal the full extent of the charcoal spread. No other archaeological features or deposits were identified within the extension.

## Discussion

- 8.1 Despite the rich archaeological presence within the surrounding area the archaeological evaluation only identified one feature of archaeological interest, a small undated charcoal rich spread in Trench 2 at the north end of the site. The lack of surviving archaeological material may be the result of deep ploughing relating to the recent agricultural use of the field suggested by the relatively deep topsoil deposit and regular plough scars in the subsoil deposits.

## Recommendations

- 9.1 The evaluation work has proved that no archaeologically sensitive deposits or features exist within the development area. In consequence, it is recommended that no further archaeological work is required.
- 9.2 GUARD Archaeology Ltd would stress that these recommendations are intended for guidance only and the final decisions on the nature and extent of any further archaeological work rest with the planning authority.
- 9.3 A summary of the project results will be submitted to *Discovery and Excavation in Scotland*. A copy of this is included in Appendix G. The archive for the project, including a copy of the report, will be submitted to the National Monuments Records for Scotland within six months.
- 9.4 The online OASIS form at <http://ads.ahds.ac.uk/project/oasis/> (OASIS Reference: guardarc1-158741) will be completed within 3 months. Once the Data Structure Report has become a public document by submission to or incorporation into the SMR, PKHT will validate the OASIS form thus placing the information into the public domain on the OASIS website.

## Acknowledgements

- 10.1 GUARD Archaeology Ltd would like to thank CH2m/Halcrow and Perth and Kinross Council for their assistance. Plant and driver was supplied by GJ Plant Ltd. Technical support was from Aileen Maule and John Kiely. A survey of trench locations was conducted by Fiona Jackson. The illustrations were produced by Fiona Jackson. The report was desk top published by Gillian McSwan. The project was managed for GUARD Archaeology Ltd by Bob Will.



**Gleneagles Station  
Data Structure Report**

**Section 2: Appendices**



**[www.guard-archaeology.co.uk](http://www.guard-archaeology.co.uk)**

## Appendices

### Appendix A: Bibliography

British Geological Survey, Geology of Britain viewer, <http://mapapps.bgs.ac.uk/geologyofbritain/home/html> (accessed 27th August 2013).

CH2M Hill Halcrow, Gleneagles Station Archaeological Written Scheme of Investigation (Version 1.2) 2013 CH2M Hill Halcrow Group Limited, London.

Perth and Kinross Heritage Sites and Monuments Record <http://www.pkht.org.uk/mapsearch.html> (accessed 29th August 2013).

National Monuments Record for Scotland, [www.rcahms.gov.uk](http://www.rcahms.gov.uk) (accessed 29<sup>th</sup> August 2013).

### Appendix B: Trench Details

Tr No	Length (m)	Width (m)	Depth (m)	Topsoil/Overburden	Subsoil	Details
1	20	2	0.32-0.60m	Reddish/brown sand silt topsoil with sub-rounded pebble inclusions and fine plant roots (depth 0.31m). Below was found an intermediate deposit of a beige/brown sand silt with occasional sub-rounded pebble inclusions (depth 0.10-0.31m)	Orange/brown gravel sand with sub-rounded cobble inclusions	No archaeological features or finds located.
2	22.5	2	0.50m	Reddish/brown sand silt topsoil with sub-rounded pebble inclusions and fine plant roots (depth 0.45m).	Orange/brown gravel sand with sub-rounded cobble inclusions	One small shallow spread of charcoal found in southern end of trench
3	20	2	0.50m	Reddish/brown sand silt topsoil with sub-rounded pebble inclusions and fine plant roots (depth 0.42m).	Orange/brown gravel sand with sub-rounded cobble inclusions	No archaeological features or finds located.
4	20	2	0.46m	Reddish/brown sand silt topsoil with sub-rounded pebble inclusions and fine plant roots (depth 0.40m).	Orange/brown gravel sand with sub-rounded cobble inclusions	No archaeological features or finds located.
5	20	2	0.40m	Reddish/brown sand silt topsoil with sub-rounded pebble inclusions and fine plant roots (depth 0.35m).	Orange/brown gravel sand with sub-rounded cobble inclusions	No archaeological features or finds located.
6	20	2	0.33m	Reddish/brown sand silt topsoil with sub-rounded pebble inclusions and fine plant roots (depth 0.28m).	Orange/brown gravel sand with sub-rounded cobble inclusions	No archaeological features or finds located.
7	20	2	0.41m	Reddish/brown sand silt topsoil with sub-rounded pebble inclusions and fine plant roots (depth 0.36m).	Orange/brown gravel sand with sub-rounded cobble inclusions	No archaeological features or finds located.
8	20	2	0.36m	Reddish/brown sand silt topsoil with sub-rounded pebble inclusions and fine plant roots (depth 0.32m).	Orange/brown gravel sand with sub-rounded cobble inclusions	No archaeological features or finds located.
9	20	2	0.50m	Reddish/brown sand silt topsoil with sub-rounded pebble inclusions and fine plant roots (depth 0.43m).	Orange/brown gravel sand with sub-rounded cobble inclusions	No archaeological features or finds located.
10	20	2	0.50m	Reddish/brown sand silt topsoil with sub-rounded pebble inclusions and fine plant roots (depth 0.31m). Below was found an intermediate deposit of a beige/brown sand silt with occasional sub-rounded pebble inclusions (depth 0.13m)	Orange/brown gravel sand with sub-rounded cobble inclusions	No archaeological features or finds located.
11	20	2	0.40m	Reddish/brown sand silt topsoil with sub-rounded pebble inclusions and fine plant roots (depth 0.40m).	Orange/brown gravel sand with sub-rounded cobble inclusions	No archaeological features or finds located.
12	20	2	0.42m	Reddish/brown sand silt topsoil with sub-rounded pebble inclusions and fine plant roots (depth 0.35m).	Orange/brown gravel sand with sub-rounded cobble inclusions interspersed with a reddish/brown coarse grained sand	No archaeological features or finds located.

Tr No	Length (m)	Width (m)	Depth (m)	Topsoil/Overburden	Subsoil	Details
13	20	2	0.46m	Reddish/brown sand silt topsoil with sub-rounded pebble inclusions and fine plant roots (depth 0.39m).	Orange/brown gravel sand with sub-rounded cobble inclusions	No archaeological features or finds located.
14	20	2	0.50-0.56m	Reddish/brown sand silt topsoil with sub-rounded pebble inclusions and fine plant roots (depth 0.34m). Below was found an intermediate deposit of a beige/brown sand silt with occasional sub-rounded pebble inclusions (depth 0.20m)	Reddish/brown coarse grained sand with occasional gravel inclusions	No archaeological features or finds located.
15	20	2	0.48-0.60m	Reddish/brown sand silt topsoil with sub-rounded pebble inclusions and fine plant roots (depth 0.38m). Below was found an intermediate deposit of a beige/brown sand silt with occasional sub-rounded pebble inclusions (depth 0.26m)	Orange/brown gravel sand with sub-rounded cobble inclusions	No archaeological features or finds located.
16	20	2	0.30-50m	Reddish/brown sand silt topsoil with sub-rounded pebble inclusions and fine plant roots (depth 0.21-32m). Below was found an intermediate deposit of a beige/brown sand silt with occasional sub-rounded pebble inclusions (depth 0.22m)	Orange/brown gravel sand with sub-rounded cobble inclusions	No archaeological features or finds located.
17	20	2	0.50m	Reddish/brown sand silt topsoil with sub-rounded pebble inclusions and fine plant roots (depth 0.40m).	Reddish/brown coarse grained sand with occasional gravel inclusions	No archaeological features or finds located.
18	20	2	0.48m	Reddish/brown sand silt topsoil with sub-rounded pebble inclusions and fine plant roots (depth 0.35-0.41m).	Reddish/brown coarse grained sand with occasional gravel inclusions	No archaeological features or finds located.
19	20	2	0.45m	Reddish/brown sand silt topsoil with sub-rounded pebble inclusions and fine plant roots (depth 0.40m).	Orange/brown gravel sand with sub-rounded cobble inclusions	No archaeological features or finds located.
20	20	2	0.54-0.60m	Reddish/brown sand silt topsoil with sub-rounded pebble inclusions and fine plant roots (depth 0.30m). Below was found an intermediate deposit of a beige/brown sand silt with occasional sub-rounded pebble inclusions (depth 0.25m)	Orange/brown gravel sand with sub-rounded cobble inclusions	No archaeological features or finds located.
21	20	2	0.50m	Reddish/brown sand silt topsoil with sub-rounded pebble inclusions and fine plant roots (depth 0.40m).	Orange/brown gravel sand with sub-rounded cobble inclusions	No archaeological features or finds located.
22	20	2	0.48m	Reddish/brown sand silt topsoil with sub-rounded pebble inclusions and fine plant roots (depth 0.41m).	Orange/brown gravel sand with sub-rounded cobble inclusions	No archaeological features or finds located.
23	20	2	0.45m	Reddish/brown sand silt topsoil with sub-rounded pebble inclusions and fine plant roots (depth 0.40m).	Orange/brown gravel sand with sub-rounded cobble inclusions	No archaeological features or finds located.
24	20	2	0.48-0.50m	Reddish/brown sand silt topsoil with sub-rounded pebble inclusions and fine plant roots (depth 0.38m).	Orange/brown gravel sand with sub-rounded cobble inclusions	No archaeological features or finds located.
25	20	2	0.42-0.58m	Reddish/brown sand silt topsoil with sub-rounded pebble inclusions and fine plant roots (depth 0.35m). Below was found an intermediate deposit of a beige/brown sand silt with occasional sub-rounded pebble inclusions (depth 0.20m)	Orange/brown gravel sand with sub-rounded cobble inclusions	No archaeological features or finds located.
26	20	2	0.40-0.60m	Reddish/brown sand silt topsoil with sub-rounded pebble inclusions and fine plant roots (depth 0.37m). Below was found an intermediate deposit of a beige/brown sand silt with occasional sub-rounded pebble inclusions (depth 0.15m)	Orange/brown gravel sand with sub-rounded cobble inclusions	No archaeological features or finds located.

Tr No	Length (m)	Width (m)	Depth (m)	Topsoil/Overburden	Subsoil	Details
27	20	2	0.50m	Reddish/brown sand silt topsoil with sub-rounded pebble inclusions and fine plant roots (depth 0.41m). Below was found an intermediate deposit of a beige/brown sand silt with occasional sub-rounded pebble inclusions (depth 0.10m)	Orange/brown gravel sand with sub-rounded cobble inclusions at southern end and a reddish/brown coarse grained sand at the northern end	No archaeological features or finds located.
28	20	2	0.38-0.40m	Reddish/brown sand silt topsoil with sub-rounded pebble inclusions and fine plant roots (depth 0.31m).	Orange/brown gravel sand with sub-rounded cobble inclusions	No archaeological features or finds located.
29	20	2	0.48m	Reddish/brown sand silt topsoil with sub-rounded pebble inclusions and fine plant roots (depth 0.41m).	Reddish/brown coarse grained sand with occasional gravel inclusions	No archaeological features or finds located.
30	20	2	0.40m	Reddish/brown sand silt topsoil with sub-rounded pebble inclusions and fine plant roots (depth 0.33m).	Reddish/brown coarse grained sand with occasional gravel inclusions	No archaeological features or finds located.
31	20	2	0.43m	Reddish/brown sand silt topsoil with sub-rounded pebble inclusions and fine plant roots (depth 0.40m).	Orange/brown gravel sand with sub-rounded cobble inclusions	No archaeological features or finds located.
32	20	2	0.42m	Reddish/brown sand silt topsoil with sub-rounded pebble inclusions and fine plant roots (depth 0.37m).	Reddish/brown coarse grained sand with occasional gravel inclusions	No archaeological features or finds located.
33	20	2	0.46m	Reddish/brown sand silt topsoil with sub-rounded pebble inclusions and fine plant roots (depth 0.40m).	Orange/brown gravel sand with sub-rounded cobble inclusions	No archaeological features or finds located.
34	20	2	0.39m	Reddish/brown sand silt topsoil with sub-rounded pebble inclusions and fine plant roots (depth 0.31m).	Orange/brown gravel sand with sub-rounded cobble inclusions	No archaeological features or finds located.
35	20	2	0.32m	Reddish/brown sand silt topsoil with sub-rounded pebble inclusions and fine plant roots (depth 0.28m).	Orange/brown gravel sand with sub-rounded cobble inclusions	No archaeological features or finds located.
36	20	2	0.40m	Reddish/brown sand silt topsoil with sub-rounded pebble inclusions and fine plant roots (depth 0.31m).	Orange/brown gravel sand with sub-rounded cobble inclusions	No archaeological features or finds located.
37	20	2	0.35-0.50m	Reddish/brown sand silt topsoil with sub-rounded pebble inclusions and fine plant roots (depth 0.34m). Below was found an intermediate deposit of a beige/brown sand silt with occasional sub-rounded pebble inclusions (depth 0.19m)	Orange/brown gravel sand with sub-rounded cobble inclusions	No archaeological features or finds located.
38	20	2	0.42m	Reddish/brown sand silt topsoil with sub-rounded pebble inclusions and fine plant roots (depth 0.31m).	Orange/brown gravel sand with sub-rounded cobble inclusions	No archaeological features or finds located.
39	20	2	0.59m	Reddish/brown sand silt topsoil with sub-rounded pebble inclusions and fine plant roots (depth 0.31m). Below was found an intermediate deposit of a beige/brown sand silt with occasional sub-rounded pebble inclusions (depth 0.21m)	Orange/brown gravel sand with sub-rounded cobble inclusions	No archaeological features or finds located.
40	20	2	0.33-0.40m	Reddish/brown sand silt topsoil with sub-rounded pebble inclusions and fine plant roots (depth 0.31m).	Orange/brown gravel sand with sub-rounded cobble inclusions	No archaeological features or finds located.
41	20	2	0.42m	Reddish/brown sand silt topsoil with sub-rounded pebble inclusions and fine plant roots (depth 0.30-0.36m).	Orange/brown gravel sand with sub-rounded cobble inclusions	No archaeological features or finds located.
42	20	2	0.47-0.50m	Reddish/brown sand silt topsoil with sub-rounded pebble inclusions and fine plant roots (depth 0.42m).	Orange/brown gravel sand with sub-rounded cobble inclusions	No archaeological features or finds located.

### Appendix C: List of Contexts

Context No.	Description	Interpretation
001	Reddish/brown sand silt with inclusions of sub-rounded pebbles and fine plant roots. Moderate compaction. Depth 0.31-0.42m	Topsoil deposit
002	Orange/brown sand silt with gravel. Inclusions include sub-rounded pebbles and cobbles	Subsoil deposit
003	Reddish/brown sand silt with occasional sub-rounded pebble inclusions. Depth 0.13-0.31m	Natural intermediate deposit
004	Reddish/brown sand silt with gravel	Subsoil deposit
005	Oval shaped brown/black fine silt spread measuring 0.78m in length, 0.35m in width with a depth of 0.03m. Contains inclusions of charcoal.	Small charcoal spread

### Appendix D: List of Samples

Sample No.	Area	Context No.	Size	Reason for Sampling				Application/Comments
				Pot	Bone	Lithics	Botanics	
001	Trench 002	005	3L				x	Charcoal rich. For flotation

### Appendix E: List of Drawings

Drawing No.	Area	Sheet No.	Subject	Scale
1	Trench 002	-	South facing section of charcoal spread	1:10
2	Trench 002	-	Post-excavation plan of charcoal spread	1:10

### Appendix F: List of Photographs

Frame	Area	Context No.	Subject	Taken From
1	42	001, 002	W facing section	W
2	42	002	Post-excavation	S
3	40	001, 002	N facing section	N
4	40	002	Post-excavation	W
5	41	001, 002	N facing section	N
6	-	-	Voided shot	-
7	41	002	Post-excavation	N
8	38	001, 002	W facing section	W
9	38	002	Post-excavation	N
10	37	001-003	N facing section	N
11	37	002	Post-excavation	W
12	-	-	Pre-excavation of field	S
13	-	-	Pre-excavation of field	SE
14	-	-	Working shot	E
15	-	-	Working shot	NE
16	33	001, 002	S facing section	S
17	33	002	Post-excavation	W
18	36	001, 002	W facing section	W
19	36	002	Post-excavation	S
20	35	001, 002	S facing section	S
21	35	002	Post-excavation	W
22	34	001, 002	W facing section	W
23	34	002	Post-excavation	S
24	33	001, 002	S facing section	S
25	33	002	Post-excavation	W
26	30	001, 004	S facing section	S
27	30	004	Post-excavation	W
28	-	-	Pre-excavation of field	S

Frame	Area	Context No.	Subject	Taken From
29	31	001, 002	W facing section	W
30	31	002	Post-excavation	N
31	32	001, 004	W facing section	W
32	32	004	Post-excavation	W
33	27	001-004	W facing section	W
34	27	003-004	Post-excavation	N
35	28	001, 002	N facing section	N
36	28	002	Post-excavation	E
37	29	001, 004	W facing section	W
38	29	004	Post-excavation	S
39	25	001-003	W facing section	W
40	25	002	Post-excavation	S
41	26	001-003	N facing section	N
42	26	002	Post-excavation	E
43	24	001, 002	S facing section	S
44	24	002	Post-excavation	W
45	23	001, 002	W facing section	W
46	23	002	Post-excavation	N
47	22	001, 002	W facing section	W
48	22	002	Post-excavation	N
49	21	001, 004	N facing section	N
50	21	004	Post-excavation	E
51	20	001, 003, 004	W facing section	W
52	20	004	Post-excavation	S
53	18	001, 004	W facing section	W
54	18	004	Post-excavation	S
55	19	001, 004	S facing section	S
56	19	004	Post-excavation	E
57	17	001, 002	S facing section	S
58	17	002	Post-excavation	E
59	14	001-003	W facing section	W
60	14	002	Post-excavation	S
61	16	001-003	W facing section	W
62	16	002	Post-excavation	S
63	22	002	Pre-excavation of possible feature (natural)	W
64	15	001, 003, 004	S facing section	S
65	15	004	Post-excavation	E
66	13	001, 002	N facing section	N
67	13	002	Post-excavation	E
68	10	001-003	W facing section	W
69	10	002	Post-excavation	S
70	12	001-002, 004	W facing section	W
71	12	002, 004	Post-excavation	S
72	11	001, 002	S facing section	S
73	11	002	Post-excavation	E
74	9	001, 002	N facing section	N
75	22	002	Post-excavation of possible feature (natural)	S
76	9	002	Post-excavation	E
77	8	001, 002	W facing section	W
78	10	002	Pre-excavation of possible feature (natural)	E
79	8	002	Post-excavation	S
80	7	001, 002	W facing section	W
81	7	002	Post-excavation	E
82	6	001, 002	W facing section	W
83	6	002	Post-excavation	S

Frame	Area	Context No.	Subject	Taken From
84	10	002	Post-excavation of possible feature (natural)	S
85	5	001, 002	S facing section	S
86	5	002	Post-excavation	W
87	4	001, 002	W facing section	W
88	16	002	Pre-excavation of possible feature (natural)	W
89	16	002	Pre-excavation of possible feature (natural)	W
90	4	002	Post-excavation	S
91	2	001-002	W facing section	W
92	2	002	Post-excavation	S
93	2	002, 005	Pre-excavation of charcoal spread	W
94	3	001, 002	S facing section	S
95	3	002	Post-excavation	E
96	1	001-003	S facing section	S
97	1	002	Post-excavation	E
98	2	002, 005	Pre-excavation of charcoal spread	S
99	16	002	Post-excavation of possible feature (natural)	W
100	-	-	Viod	-
101	-	-	Viod	-
102	39	002	Post-excavation	E
103	-	-	Excavated trenches	N
104	-	-	Excavated trenches	N
105	2	002, 005	S facing section of charcoal spread	S
106	2	002	Post-excavation of charcoal spread	S
107	-	-	Possible access route to trenches south of main field	N
108	-	-	Possible access route to trenches south of main field	W
109	-	-	Possible access route to trenches south of main field	W
110	-	-	Possible access route to trenches south of main field	N
111	-	-	Possible access route to trenches south of main field	W
112	-	-	Proposed site of trenches to south fo main field	NE
113	-	-	Machine backfilling trenches	SW
114	-	-	Machine backfilling trenches	SW
115	-	-	Machine backfilling trenches	SW
116	-	-	Backfilled trenches	N
117	-	-	Backfilled trenches	NW
118	-	-	Excavated trenches	SW
119	-	-	Excavated trenches	SW
120	-	-	Backfilled trenches	N
121	-	-	Backfilled trenches	SW
122	-	-	Backfilled trenches	SW

## Appendix G: Discovery And Excavation Scotland Entry

LOCAL AUTHORITY:	Perth and Kinross
PROJECT TITLE/SITE NAME:	Gleneagles Station
PROJECT CODE:	3733
PARISH:	Blackford
NAME OF CONTRIBUTOR(S):	Maureen C. Kilpatrick
NAME OF ORGANISATION:	GUARD Archaeology Limited
TYPE(S) OF PROJECT:	Archaeological Evaluation
NMRS NO(S):	--
SITE/MONUMENT TYPE(S):	--
SIGNIFICANT FINDS:	None
NGR (2 letters, 6 figures)	NN 927 101 (centred)
START DATE (this season)	26th August 2013
END DATE (this season)	28th August 2013
PREVIOUS WORK (incl. DES ref.)	--
MAIN (NARRATIVE) DESCRIPTION: (May include information from other fields)	Due to the close proximity of known archaeological sites that include a Pictish stone and Iron Age settlement an archaeological evaluation was carried out by GUARD Archaeology Limited on an area proposed for the construction of a new access road to the south of Gleneagles Railway Station. The trial trench evaluation consisted of 42 trenches each 20 m long and 2 m wide equivalent to 6% of the total area proposed for development (3.4 ha). Only one significant archaeological feature was encountered during the evaluation. The feature was an undated oval shaped charcoal rich spread 0.78m by 0.35m. No artefacts were recovered from the feature or from any of the trenches.
PROPOSED FUTURE WORK:	--
SPONSOR OR FUNDING BODY:	CH2M Hill Halcrow and Perth and Kinross Council
CAPTION(S) FOR ILLUSTRS:	--
ADDRESS OF MAIN CONTRIBUTOR:	GUARD Archaeology Limited, 52 Elderpark Workspace, 100 Elderpark Street, Glasgow, G51 3TR
EMAIL ADDRESS:	bob.will@guard-archaeology.co.uk
ARCHIVE LOCATION (intended/deposited)	NMRS



Appendix H: Method Statement

# GLENEAGLES RAILWAY STATION

ARCHAEOLOGICAL EVALUATION

METHOD STATEMENT

PROJECT 3733

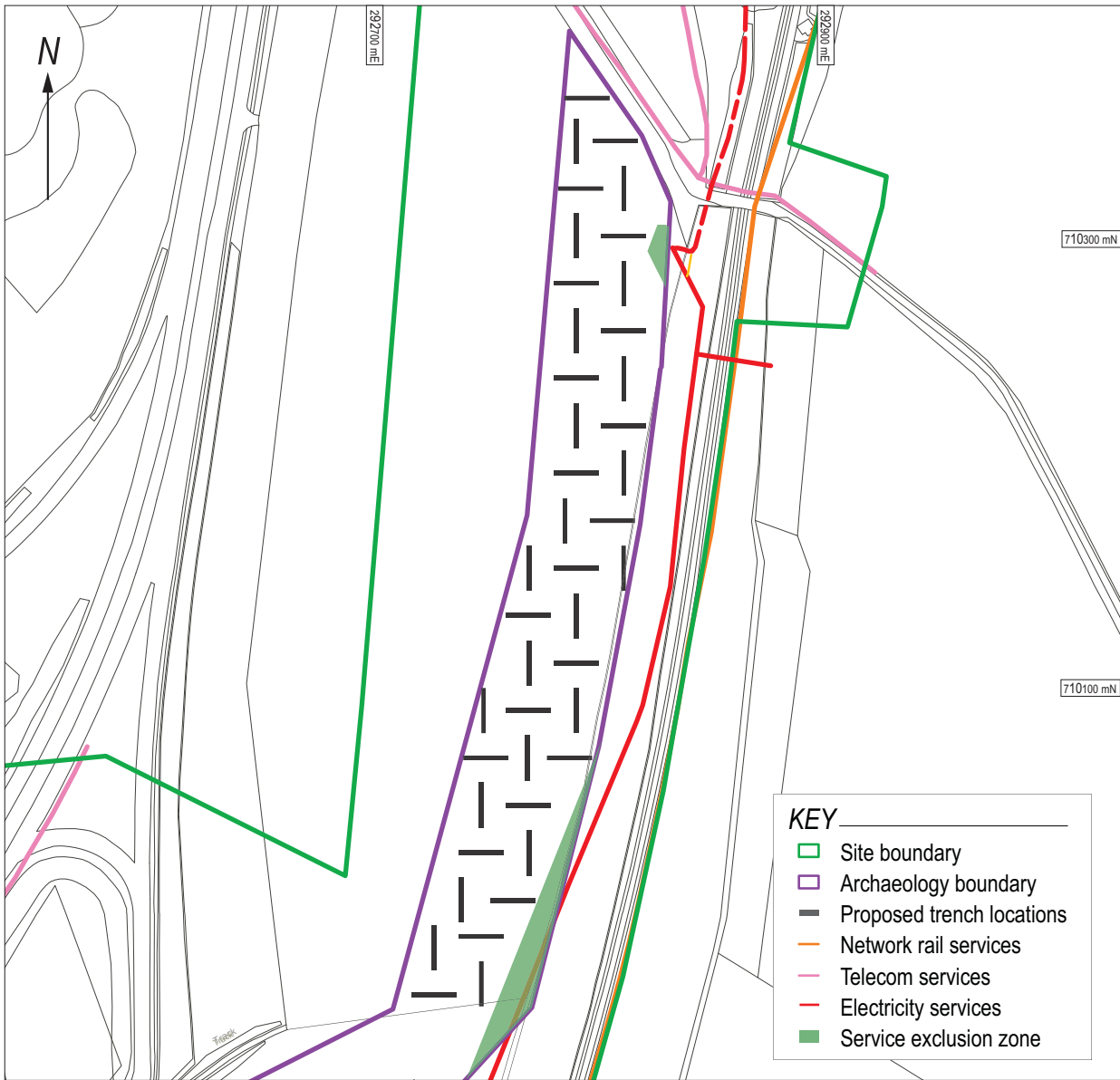
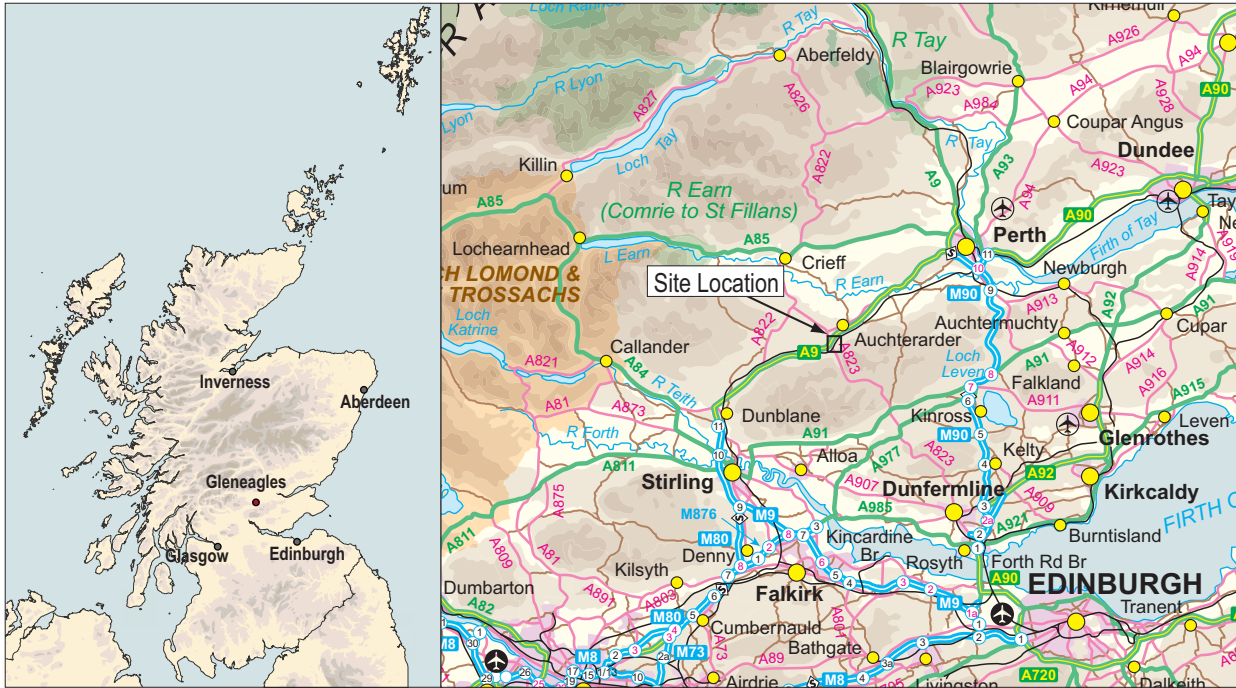


Figure 1:  
Proposed trench  
location.

## Executive Summary

- 1.1 This document sets out a Method Statement for an archaeological evaluation at Gleneagles Railway Station. This method statement has been prepared on behalf of Perth and Kinross Council, in consultation with the Perth and Kinross Heritage Trust (PKHT), who advise Perth and Kinross Council on archaeological matters. The method statement covers an archaeological evaluation that will take place in advance of the construction of a proposed new access road to the railway station. The evaluation will aim to establish if archaeological remains survive within the proposed construction area.

## Introduction

- 2.1 This method statement sets out the scope of work for the proposed archaeological evaluation for the proposed new access road to Gleneagles Railway Station. The aim of the evaluation is to establish the presence, extent and nature of any significant archaeological remains within the proposed construction area. Should significant remains be identified and these cannot be preserved *in situ* by modifying or moving the proposed development then further mitigation may be required to preserve the archaeological remains by record through excavation. The method statement is based on the agreed methodology detailed in a Written Scheme of Investigation prepared by Halcrow Group Ltd and complies with the planning conditions (reference 12/01679/FLL).
- 2.2 In addition this method statement outlines the programme of archaeological works that may be needed to mitigate the effects of the proposed development. It details the methodology to be employed in implementing the Stage 1 archaeological evaluation. The mitigation methodology to be employed if *preservation in situ* is not possible during Stage 2 excavation and Stage 3 post excavation analysis and publication, will be specified in *addenda* to this document. These *addenda*, if required, will be submitted to the PKHT acting on behalf of Perth and Kinross Council, prior to the commencement of any further archaeological work. All phases of work will be funded by the developer as required by the Planning Authority.

## Site Location

- 3.1 The development area is located at NGR: NN 927 101 (centred) to the south of Gleneagles Railway Station in fields. The eastern boundary to the construction corridor is the railway line and there is a private road to the north and the main A9 road to the west with a forestry plantation to the south next to the existing access roundabout for the A9.

## Archaeological Background

- 4.1 Although there are no recorded sites or monuments within the development boundary a number of Scheduled Ancient Monuments are recorded within the immediate vicinity (some with 270m of the station). These include prehistoric standing stones and settlement and an Iron Age forts. There is also standing stone with Pictish symbols and a medieval tower house. In addition recent improvements at the nearby Loaninghead junction on the A9 uncovered several important archaeological remains. All these monuments suggest a long period of settlement within the area and indicate that there is the potential to uncover further archaeological remains during the development.

## Aims, Objectives and Scope

- 5.1 The main aim of the archaeological evaluation is to ensure that important archaeological remains are identified and not destroyed by the proposed development. Therefore the aims and objectives of the archaeological evaluation are as follows:
- To provide detailed information on the presence or absence of extent, character, date, depth of burial and degree of survival of archaeological finds

- To report on all archaeological finds and features recorded, and;
- To provide sufficient information so that a mitigation strategy can be produced

## Evaluation Methodology

6.1 The strategy to be employed during the evaluation will consist of the following:

- The proposed development area will be subject to a 6% evaluation (of the undisturbed part of the total development area 2.8065 ha, therefore 6% is equivalent to approximately 1,684 m<sup>2</sup>).
- The evaluation will consist of 42 machine excavated trenches 20m long and 2 m wide. The trenches will be located to provide comprehensive coverage along the route of the proposed new road line (see location plan). The trenches have been located to avoid all known services and no excavation will take place within 10m of services. In addition a CAT scanner will be used to scan the location of each trench prior to excavation.
- Prior to excavation photographs of the site will be taken from a variety of angles to make a record of the site prior to the works commencing.
- The machine excavated trenches will be supervised by an experienced and qualified archaeologist. The machine (360 degree tracked excavator) will be fitted with a toothless ditching bucket. Overburden will be removed in spits to the first archaeological horizon or, where none is found, to the natural subsoil. Topsoil will be separated from subsoil.
- Should trench depths exceed a safe depth then the trenches will be stepped to facilitate a deeper excavation. However, it is not anticipated that deep excavations will be required (see project specific risk assessment).
- All potential archaeological features will be cleaned and planned and recorded using *proforma* recording sheets, scale drawings and photographs. Should trenches be void of archaeological features selected profiles will be drawn and photographed (at the end of each trench) to demonstrate the stratigraphic sequence across the site.
- As a Registered Organisation with the Institute for Archaeologists (IfA), GUARD Archaeology Ltd adheres to IfA guidelines and standards prescribed for archaeological fieldwork. Therefore all aspects of fieldwork (excavation, recording etc) will be undertaken in accordance with current best practice and the IfA's Standards and Guidance for Archaeological Watching Briefs. (IfA 2008a) and Excavation (IfA 2008b).
- Any significant archaeological features encountered will be assessed by the on-site archaeologist(s). Should negative-cut features be encountered these will be investigated in order to determine their significance, date and function (a 50% sample is proposed). Recording will include pro forma sheets, drawings and photographs.
- All excavated feature fills and horizons will be sampled for palaeo-environmental evidence. This may also include micromorphological sampling in order to address key issues on soil development.
- In the event that significant features, special finds or complex groups of features are encountered the client and PKHT, on behalf of the Planning Authority, will be alerted.
- In the event of human burials being discovered, the archaeologist will procure and comply with all statutory consents and licences. Where any part of a human burial is disturbed, the whole burial must be archaeologically excavated. Specialist advice and support must be provided as appropriate.
- Trenches will be backfilled following sign off by PKHT. Backfilling will comprise careful compaction of the fill material so that the land can return to use as pasture.

## Report Preparation and Contents

- 7.1 A report detailing the results of the archaeological fieldwork will be submitted to the client and PKHT within two weeks of completion of fieldwork. The report will take the form of a Data Structure Report and will contain an analysis of the results of the archaeological evaluation. The report will include a full descriptive text that will characterise the date and extent of any archaeological deposits. It will also include plans at an appropriate scale showing the area subjected to ground-breaking works, evaluation trenches, archaeological features and archiving lists of all finds, samples, field drawings and photographs.
- 7.2 If appropriate, the report will also include an addendum to this WSI for further archaeological fieldwork, post-excavation analysis and publication, should this be required.
- 7.3 The report will include the following:
- executive summary;
  - a site location plan to at least 1:10,000 scale with at least an 8 figure central grid reference;
  - OASIS reference number; unique site code;
  - Planning application number;
  - contractor's details including date work carried out;
  - nature and extent of the proposed development, including developer/client details;
  - description of the site history, location and geology;
  - a site plan to a suitable scale and tied into the national grid so that features can be correctly orientated;
  - discussion of the results of field work;
  - context & feature descriptions;
  - features, number and class of artefacts, spot dating & scientific dating of significant finds presented in tabular format;
  - plans and section drawings of the features drawn at a suitable scale;
  - initial assessment of relevant finds/samples if appropriate;
  - recommendations regarding the need for, and scope of, any further archaeological work such as excavation (Stage 2) and Post-excavation finds analysis, conservation & publication (Stage 3);
  - bibliography.
- 7.4 An appropriate number of hard copies and digital pdf copies of the report will be prepared for the client, for distribution to the relevant bodies.
- 7.5 The report will be presented in an ordered state and bound within a protective cover/sleeve. The report will be page numbered and supplemented with section numbering for ease of reference.

## Copyright

- 8.1 Copyright for any report resulting from the archaeological work undertaken as part of the project will be deemed the intellectual property of GUARD Archaeology Ltd.

## Publication

- 9.1 A summary of the project results will be submitted to *Discovery and Excavation in Scotland*. In the event of minor archaeological remains being encountered during the archaeological fieldwork, it is proposed that a comprehensive report submitted to *Discovery and Excavation in Scotland*, will form the final publication of the site. A copy of this will be included in the Data Structure Report.

- 9.2 If the results from the project are more significant they will be published in an appropriate period or other journal.
- 9.3 The scope and extent of an appropriate post-excavation programme (including any publication proposals) will be set out in a detailed post-excavation research design (PERD) and approved by PKHT. The production of a PERD will be undertaken within three months of acceptance of the DSR by PKHT and any subsequent publication will be completed within 12 months of acceptance of the PERD.

## Archive

- 10.1 The archive for the project, including a copy of the report, will be submitted to the National Monuments Records for Scotland within three months of completion of all relevant work.
- 10.2 The online OASIS form at <http://ads.ahds.ac.uk/project/oasis/> will be completed within 3 months of completion of the work. Once the Data Structure Report has become a public document by submission to or incorporation into the SMR, PKHT will validate the OASIS form thus placing the information into the public domain on the OASIS website.

## Finds Disposal

- 11.1 The arrangement for the final disposal of any finds made in connection with the archaeological work, will be deposited in keeping with Scottish legal requirements as set out in the Treasure Trove Code of Practice published by the Scottish Government in December 2008. The laws relating to Treasure Trove and *Bona Vacantia* in Scotland apply to all finds where the original owner cannot be identified. This includes all material recovered during archaeological fieldwork. Accordingly, all assemblages recovered from archaeological fieldwork are claimed automatically by the Crown and must be reported to the Scottish Archaeological Finds Allocation Panel through its secretariat, the Treasure Trove Unit. In the event of the discovery of small finds, a filled-out copy of the form "Declaration of an Archaeological Assemblage from Fieldwork" and two copies of the pertinent Data Structure Report will be submitted to the Panel at the conclusion of the fieldwork. The Panel will then be responsible for recommending to the Queen's and Lord Treasurer's Remembrancer which museum should be allocated the finds. All artefacts will be temporarily stored by GUARD until a decision has been made by the panel.

## Personnel and Liaison

- 12.1 The GUARD team will comprise the following qualified and experienced GUARD archaeologists:
- Project Manager: Mr Bob Will
  - Project Director (on-site Archaeologist): Project officer to be confirmed
  - Additional archaeologist will be drawn from our pool of experienced field archaeologists
  - Finds and Environmental Support and Conservation: Ms Aileen Maule
  - Illustrator: Ms Gillian McSwan
  - Quality Assurance: Dr John Atkinson
- 12.2 The GUARD Senior Project Manager, Mr Bob Will, will be the point of contact for the archaeological works. A full CV for individuals concerned can be made available on request.

## Monitoring

- 13.1 The proposed start date for the archaeological fieldwork is Wednesday 21 August 2013. PKHT will be given notice prior to the commencement of fieldwork. PKHT and the client will be informed of the site mobile phone number prior to the start date so that monitoring visits can be arranged.

## Health & Safety and Insurance

- 14.1 GUARD Archaeology Ltd adheres to the guidelines and standards prescribed for archaeological fieldwork set down in the Institute for Archaeologists approved Health and Safety in Field Archaeology document, prepared under the aegis of the Standing Conference of Archaeological Unit Managers (SCAUM). It is standard GUARD policy, prior to any fieldwork project commencing, to conduct a risk assessment and to prepare a project safety plan, the prescriptions of which will be strictly followed for the duration of all archaeological fieldwork. Copies of the resultant project safety plan and of GUARD's Fieldwork Safety Policy Statement may be viewed upon request.
- 14.2 GUARD Archaeology Ltd also possesses all necessary insurance cover, proofs of which may be supplied upon request.

## Bibliography

Halcrow (CH2m Hill) 2013 Archaeological Written Scheme of Investigation: Gleneagles Station for Perth and Kinross Council

**GUARD Archaeology Limited**  
**52 Elderpark Workspace**  
**100 Elderpark Street**  
**Glasgow**  
**G51 3TR**

**Tel: 0141 445 8800**

**Fax: 0141 445 3222**

**email: [info@guard-archaeology.co.uk](mailto:info@guard-archaeology.co.uk)**



**[www.guard-archaeology.co.uk](http://www.guard-archaeology.co.uk)**